



**MARGARET HAYWARD PLAYGROUND ARTIST SELECTION PANEL
MEETING 1 SUMMARY**

MEETING DATE

December 11, 2017

SELECTION PANELISTS:

Megan Brian, Assistant Director, Education & Public Practice, San Francisco Museum of Modern Art
Melorra Green, Co-Director, African American Art & Culture Complex

*Eoanna Harrison, Design Architect, San Francisco Department of Public Works

*Lizzy Hirsch, Landscape Architect, San Francisco Department of Public Works

Mary Jung, Arts Commissioner

Jennifer Sotelo, Park Section Acting Supervisor, San Francisco Recreation and Park Department

*sharing a vote

PROCESS

Round One:

Arts Commission staff presented the qualifications of 13 artists selected from the 2017/2018 Prequalified Artist for the Margaret Hayward Playground public art opportunity. "Yes/No" majority votes based on the criteria of Artistic Excellence and Appropriate to Project Goals yielded 6 artists to move to Round Two.

Round Two:

The Artist Selection Panel discussed the qualifications of the semi-finalists and scored each artist on the following criteria (1= low score):

- Artistic Excellence (1-10)
- Appropriate to Project Goals (1-10)

Round Two voting yielded one finalist and one alternate to recommend to the Arts Commission.

RESULTS

The following artists received the highest scores:

Finalists:

John Bankston	110
Leo Bersamina	75
Emory Douglas	112
Elise Ferguson	94
t.w.five	108
Lena Wolff	81

ARTS COMMISSION APPROVAL

Motion: Motion to approve the selected artists Emory Douglas and Caleb Duarte for the Margaret Hayward Playground Public Art Project as recommended by the Artist Selection Panel.

Motion: Motion to authorize the Director of Cultural Affairs to enter into contract with artists Emory Douglas and Caleb Duarte for an amount not to exceed \$33,200 for design, fabrication, transportation and installation consultation of an artwork at Margaret Hayward Playground.

SAN FRANCISCO RECREATION + PARK DEPARTMENT MARGARET HAYWARD PLAYGROUND

CIVIC DESIGN REVIEW
Monday, November 27, 2017



Supervisor
London Breed
District 5

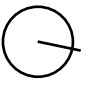
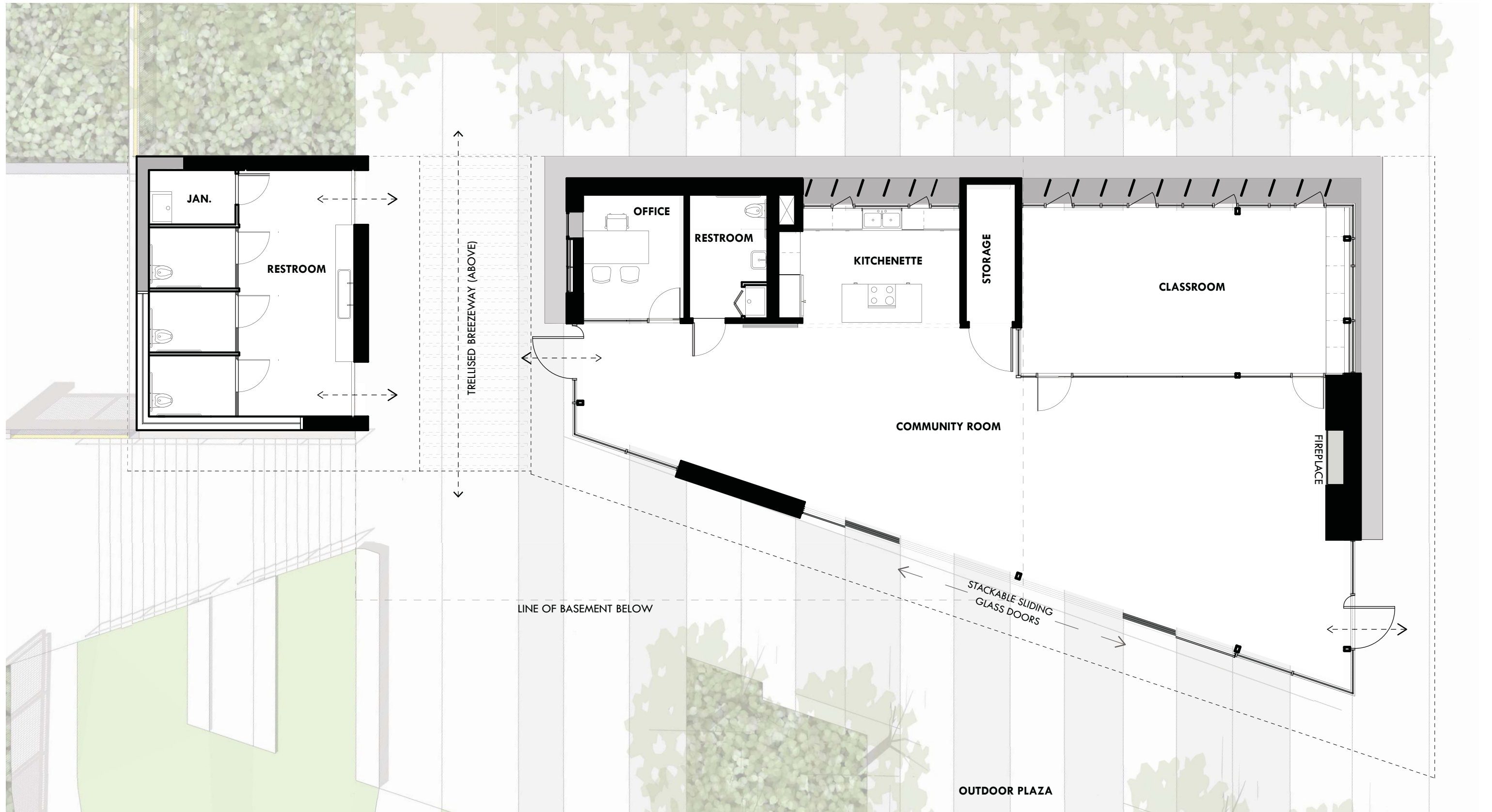
Project Managers
Marien Coss
Recreation and Park Department

Design Team
Lizzy Hirsch, Landscape Architect
Paul De Freitas, Architect
Gabriel Meil, Design Associate
Lauren McClure, Design Associate
Eoanna Harrison, Design Associate
Mayton Xu, Intern
San Francisco Public Works

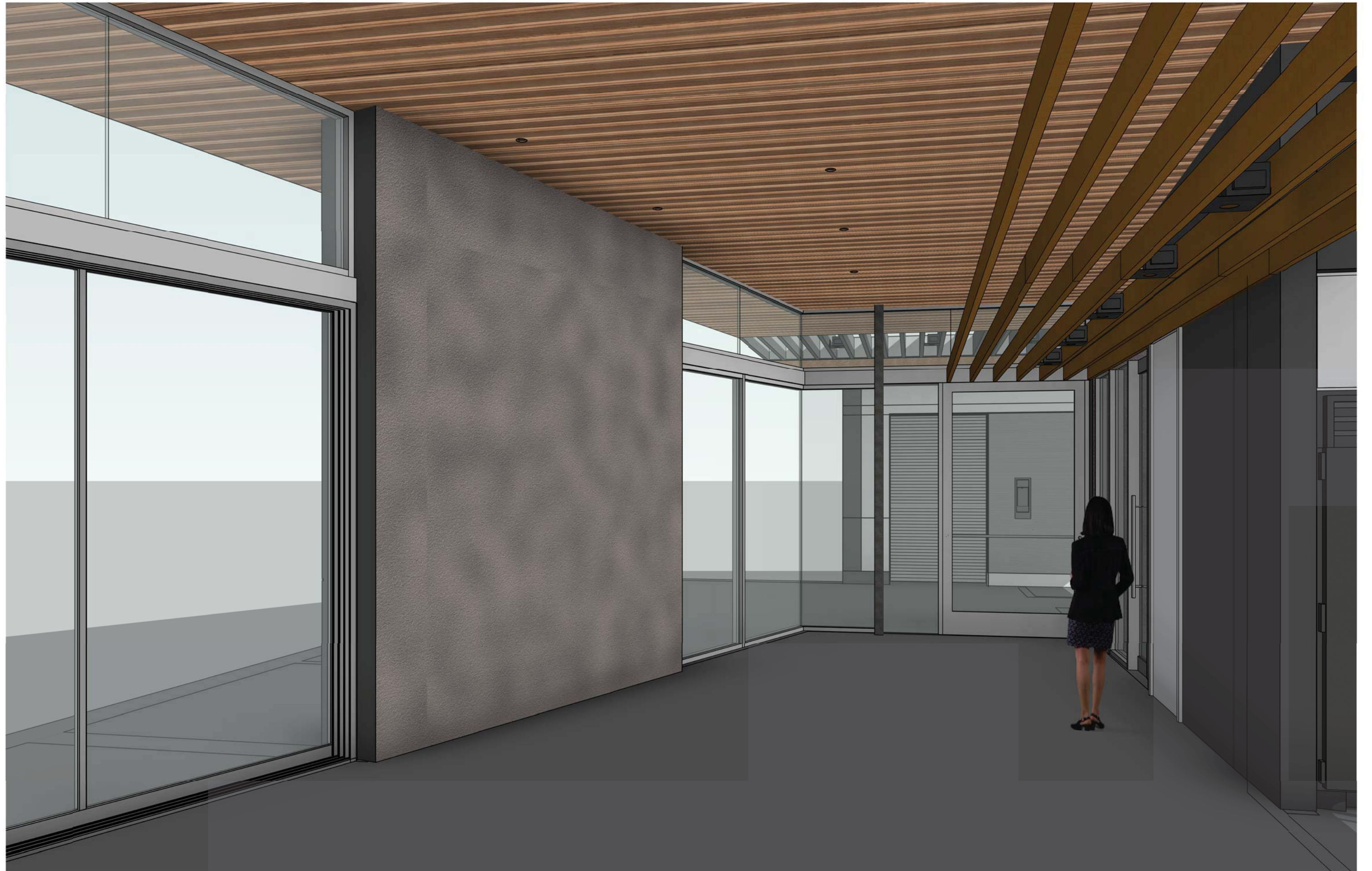


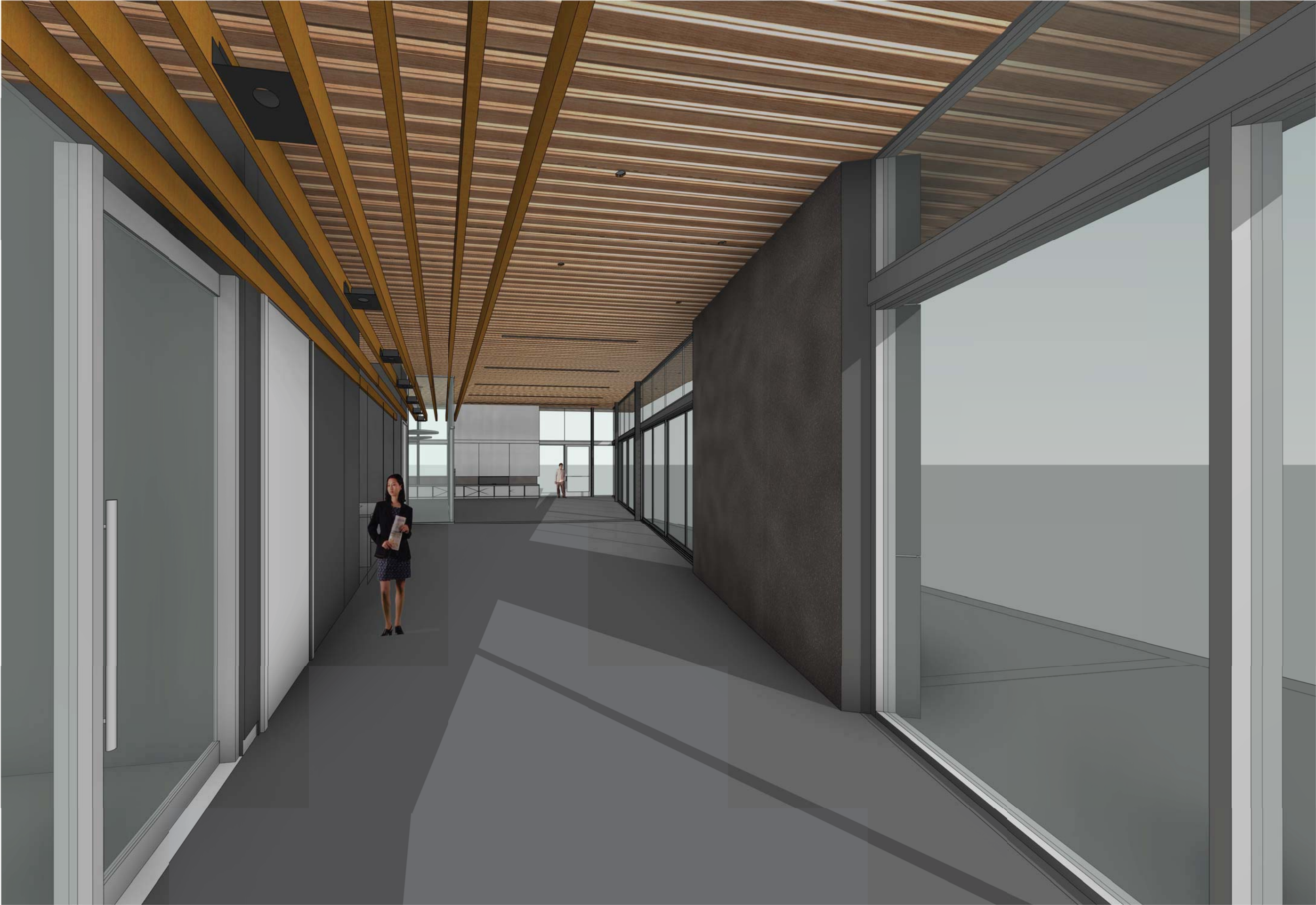


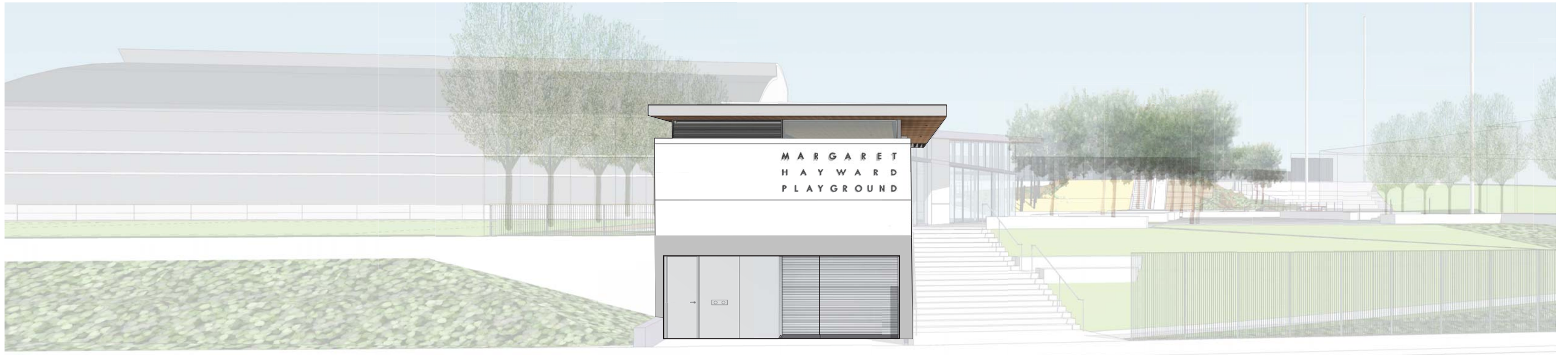












SOUTH ELEVATION (FROM GOLDEN GATE AVENUE)



NORTH ELEVATION (FROM PLAYGROUND)



WE SHALL SURVIVE, WITHOUT A DOUBT



August 21, 1971

Archive poster from *The Black Panther*, Untitled, offset lithograph, 22 7/8 x 15 inches
Collection of Alden Mary Kimbrough, Los Angeles, CA , © Emory Douglas



April 2011

Untitled, Acrylic murals (as part of the "All Power to the People" solo exhibition), dimensions variable

Courtesy of Galeria Zé dos Bois (ZDB), Bairro Alto, Lisbon



August 2009

Untitled, Acrylic mural (Emory Douglas and Rigo 23), dimensions variable

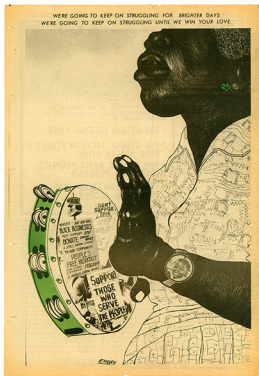
Part of the 2009 "Emory Douglas: Black Panther" exhibition at New Museum, New York

Courtesy of New Museum, New York



This image shows the political campaigns of Bobby Seale for Mayor of Oakland and Elaine Brown for Councilwomen

April 7, 1973
 Archive poster from *The Black Panther*, Untitled, offset lithograph, 22 7/8 x 15 inches
 Courtesy of the Center for the Study of Political Graphics



October 4, 1971
 Archive poster from *The Black Panther*, Untitled, offset lithograph, 22 7/8 x 15 inches
 Courtesy of the Center for the Study of Political Graphics



June 19, 1971
 Archive poster from *The Black Panther*, Untitled, offset lithograph, 22 7/8 x 15 inches
 Collection of Alden Mary Kimbrough, Los Angeles, CA