

Staff Report

Date: October 11, 2016

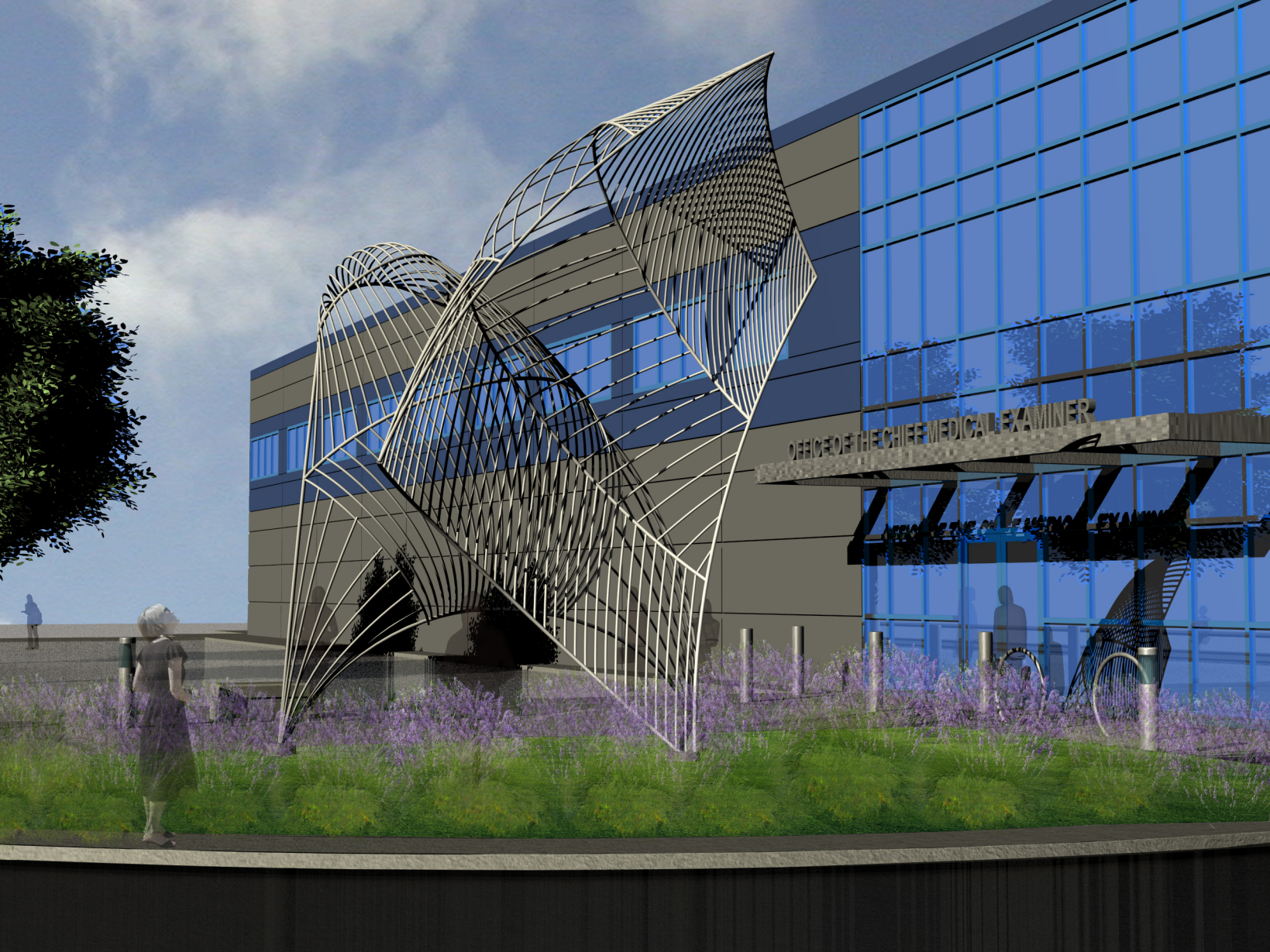
To: Visual Arts Commissioners

From: Mary Chou, Project Manager

Re: Office of the Chief Medical Examiner – Exterior Sculpture by Richard Deutsch

The following are images of the final design of the sculpture *Alma* by Richard Deutsch after completion of engineering drawings. The most significant changes include the use of 1" stainless steel tubes instead of 1" wide flat bars, and a slight change in the patterning of the stainless steel tubes with more horizontally-oriented tubes. The overall dimensions of the sculpture are the same as presented at conceptual design - 22' high by 13' 6" wide by 13' deep - and the work still has an uplifting and dynamic presence. The sculpture will be 316L stainless steel with a glass bead blasted finish and lit with two LED up-lights that cast an amber color at night.

Motion: Motion to approve Design Development and Construction Document deliverables for the exterior sculpture titled *Alma* by Richard Deutsch for the new Office of the Chief Medical Examiner.



OFFICE OF THE CHIEF MEDICAL EXAMINER

OFFICE OF THE CHIEF MEDICAL EXAMINER

