

OVERALL DESIGN

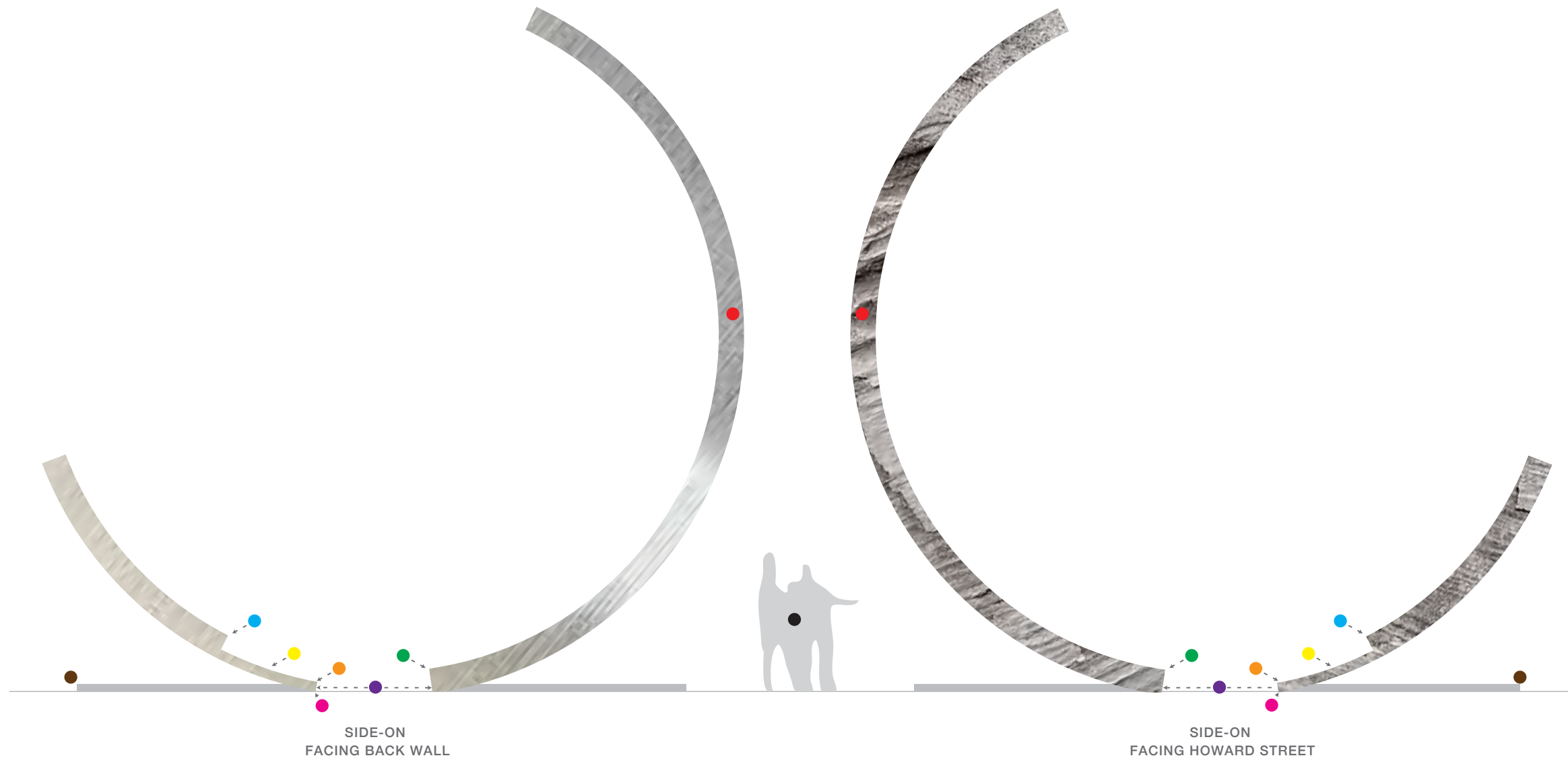
Sculpture Material: 3/8" 316 L Stainless Steel Plate and Castings
ADA Slab Material: SOM Concrete [Same Concrete for Plaza]

Dimensions: 351 in (29.25 ft) [h] x 79 in (6.6 ft) [w] x 13 in [d]
372 in (31 ft) OD diameter or length

Design Shown in Forced Perspective Side-on View



OVERALL DESIGN CALLOUTS / BOTH SIDE-ON VIEWS



Back Wall Side: Sanded-Finish 3/8" 316 L Stainless Steel Plate [Light Reflective but non-mirror finish] ●
 Howard St. Side: Cut/Melt 3/8" 316 L Stainless Steel Castings [Smooth to touch up to 96" from ground]

"Major Arc" ends with smooth to touch but irregular edge [inhibits skateboarding/biking] ●

60" distance between Major and Minor Arcs ●
 ADA measurement for wheelchair turn

"Minor Arc" ends with smooth plate edge ●

"Minor Arc" meets plaza grade at a point edge ●
 This point is supported internally through mount and hidden contact area with concrete

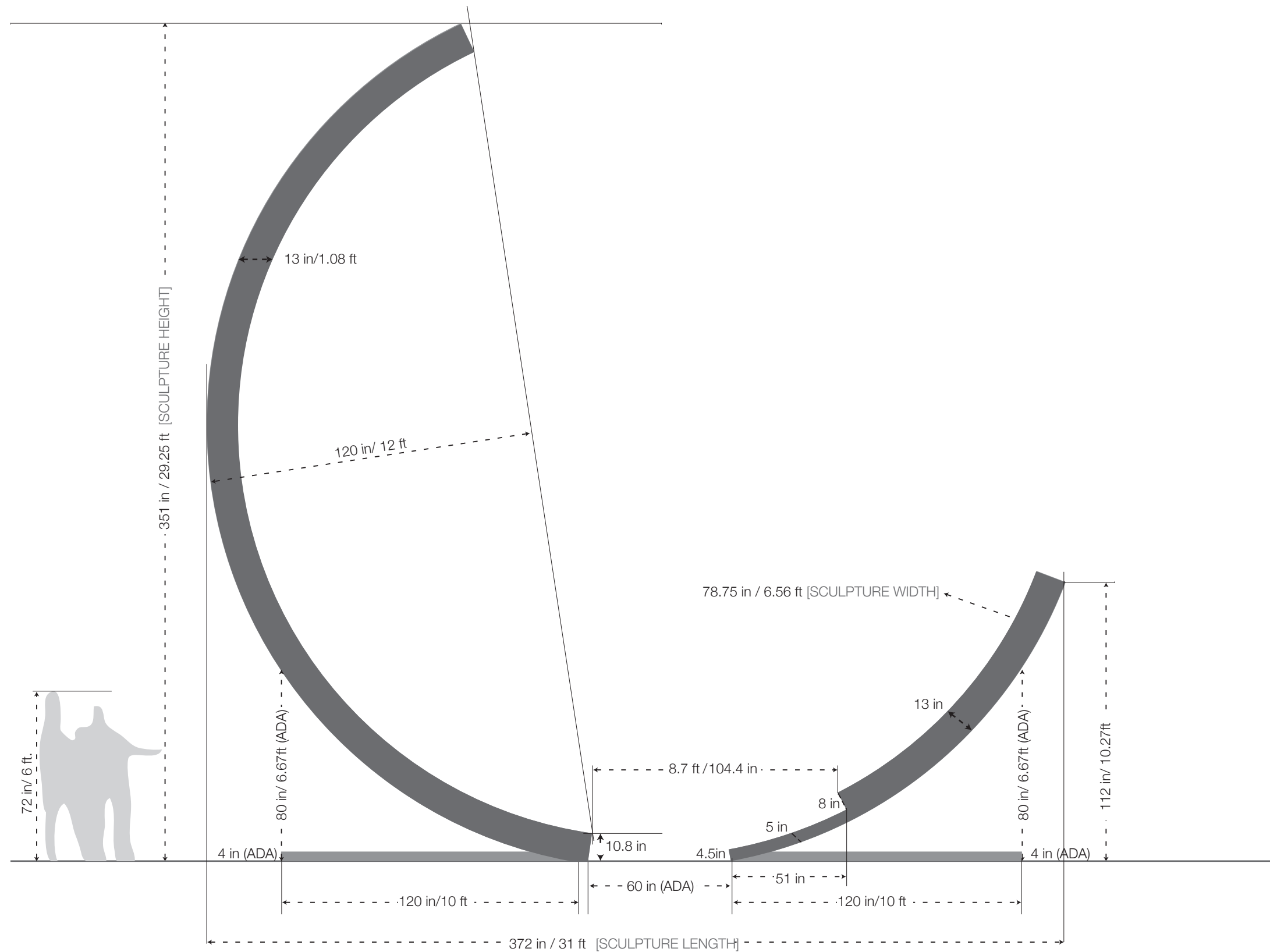
This section of the Minor Arc is lightly textured ●
 its texture is less than 1/2" in undulations to keep within ADA compliance

"Minor Arc" cut-section creates a conceptual gap ●
 as part of cut section of visible light within overall spectrum
 Its 8.7 ft gap between arcs also inhibits skate-jumping between arcs

ADA compliance concrete slabs introduced at 80" height ●
 encounter with both Arcs. Slabs 4" in height

6 ft and 5.5 ft human figures for scale ●

OVERALL DESIGN MEASUREMENTS





23° VIEW [AT BACK WALL]

BACK VIEW
STRAIGHT-ON

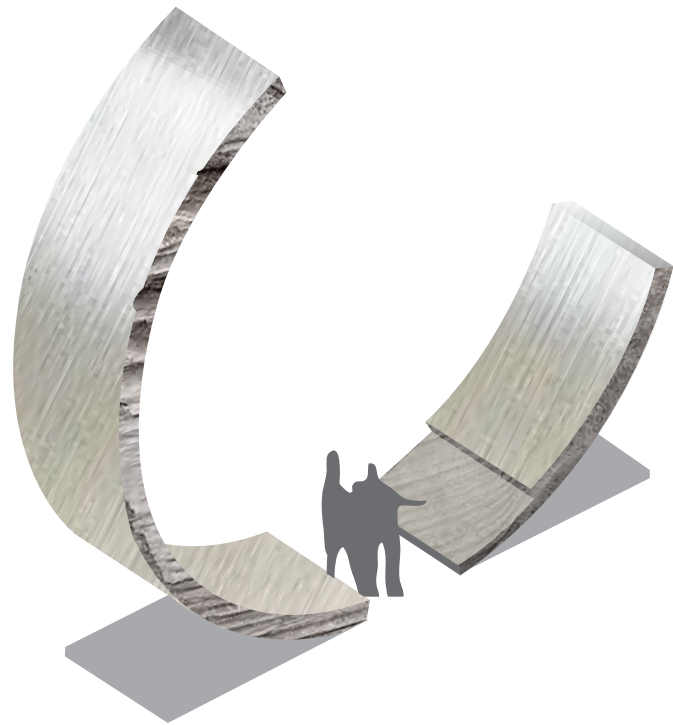
23° VIEW [AT HOWARD STREET]



45° VIEW [AT HOWARD STREET]

79° VIEW [AT MINOR ARC]

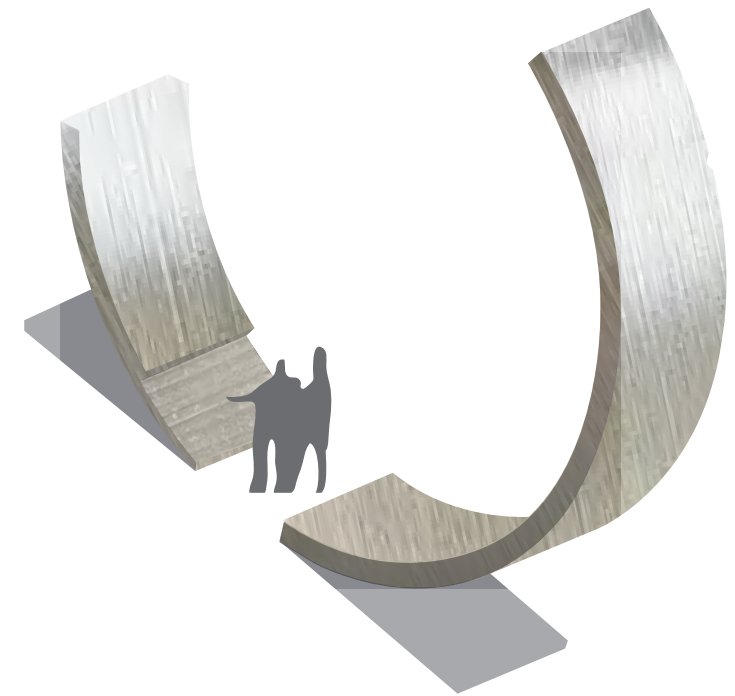
45° VIEW [AT BACK WALL]



FROM PEDESTRIAN BRIDGE
CROSSING HOWARD STREET

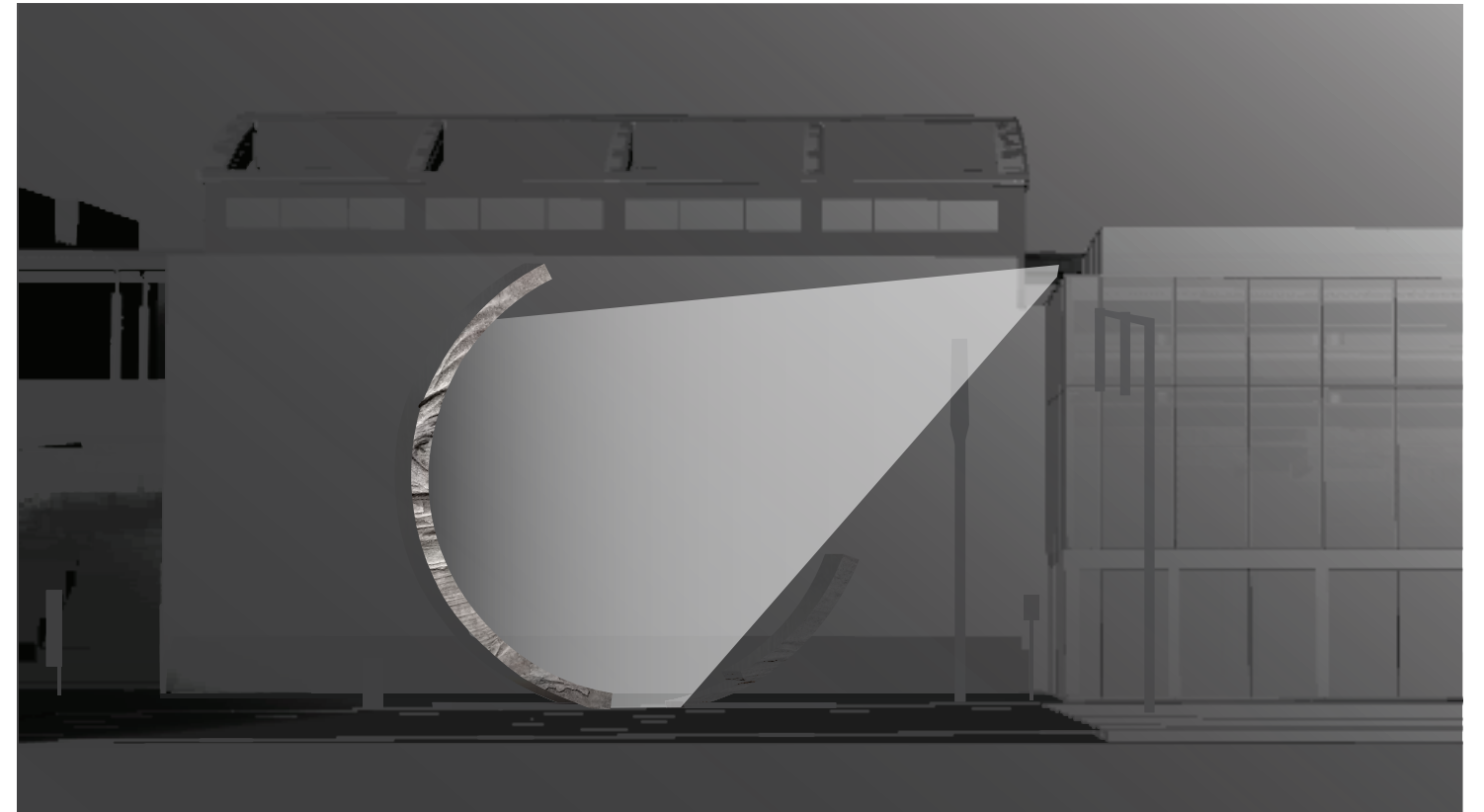
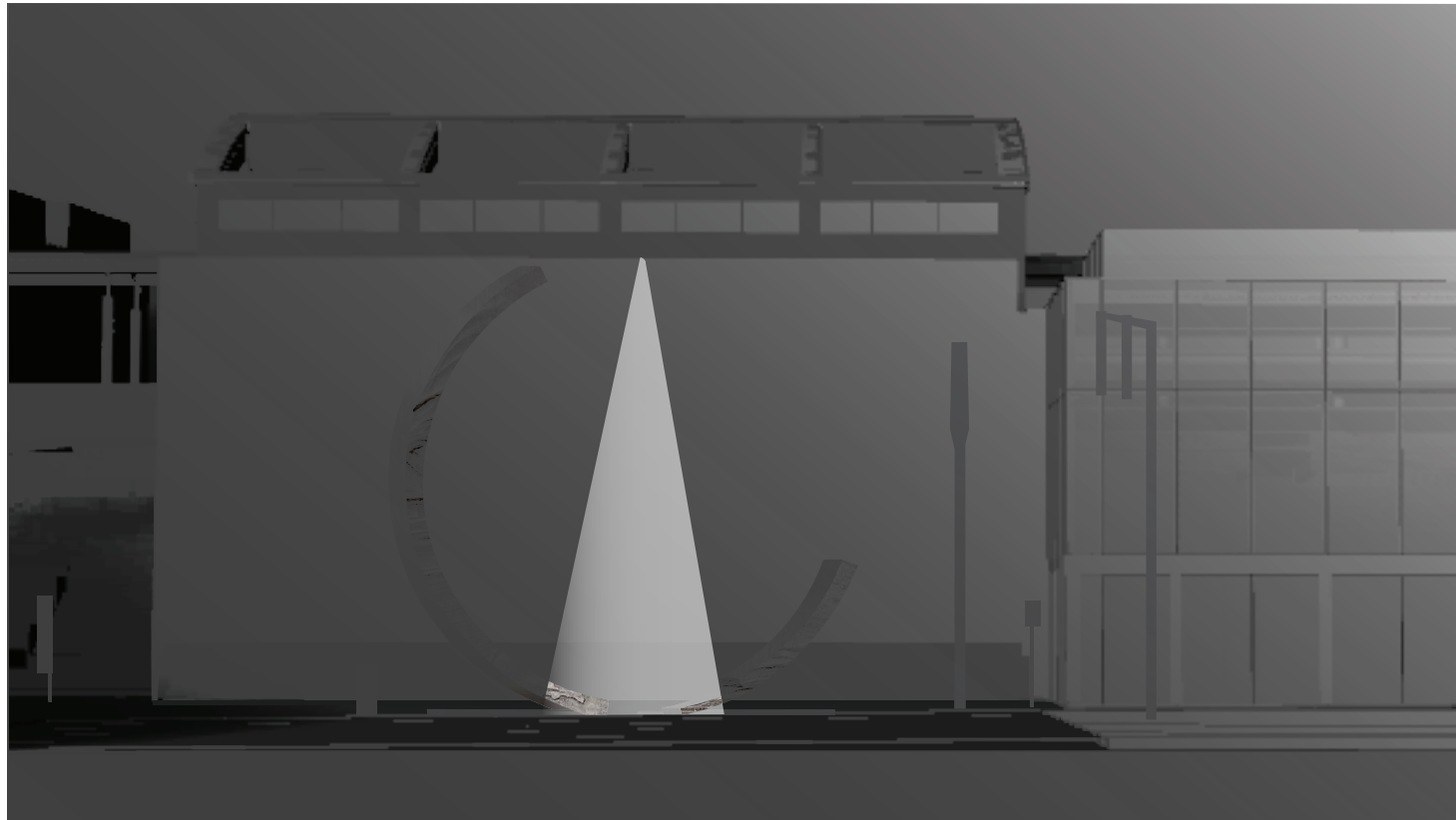


FROM MOSCONE NORTH ROOF TERRACE



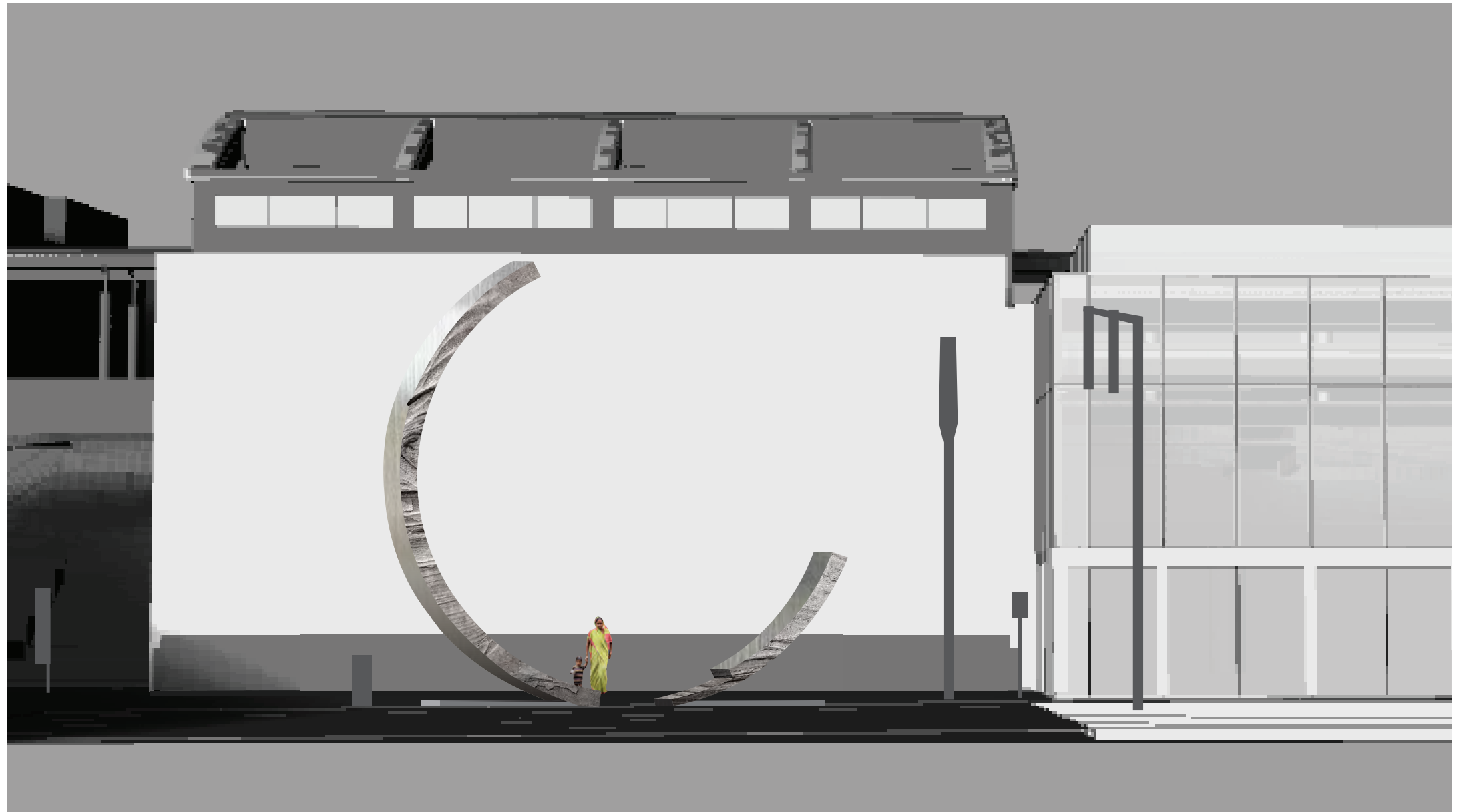
ENTERING PEDESTRIAN BRIDGE
FROM NORTH SIDE OF HOWARD

LIGHTING



LIGHTING PROGRAM: to be presented in Construction Drawing Phase
Program to conceptually highlight the "visible light" section at night as well as catch the Curve of Major Arc

LOCATION VIEW 1 [ACROSS HOWARD]



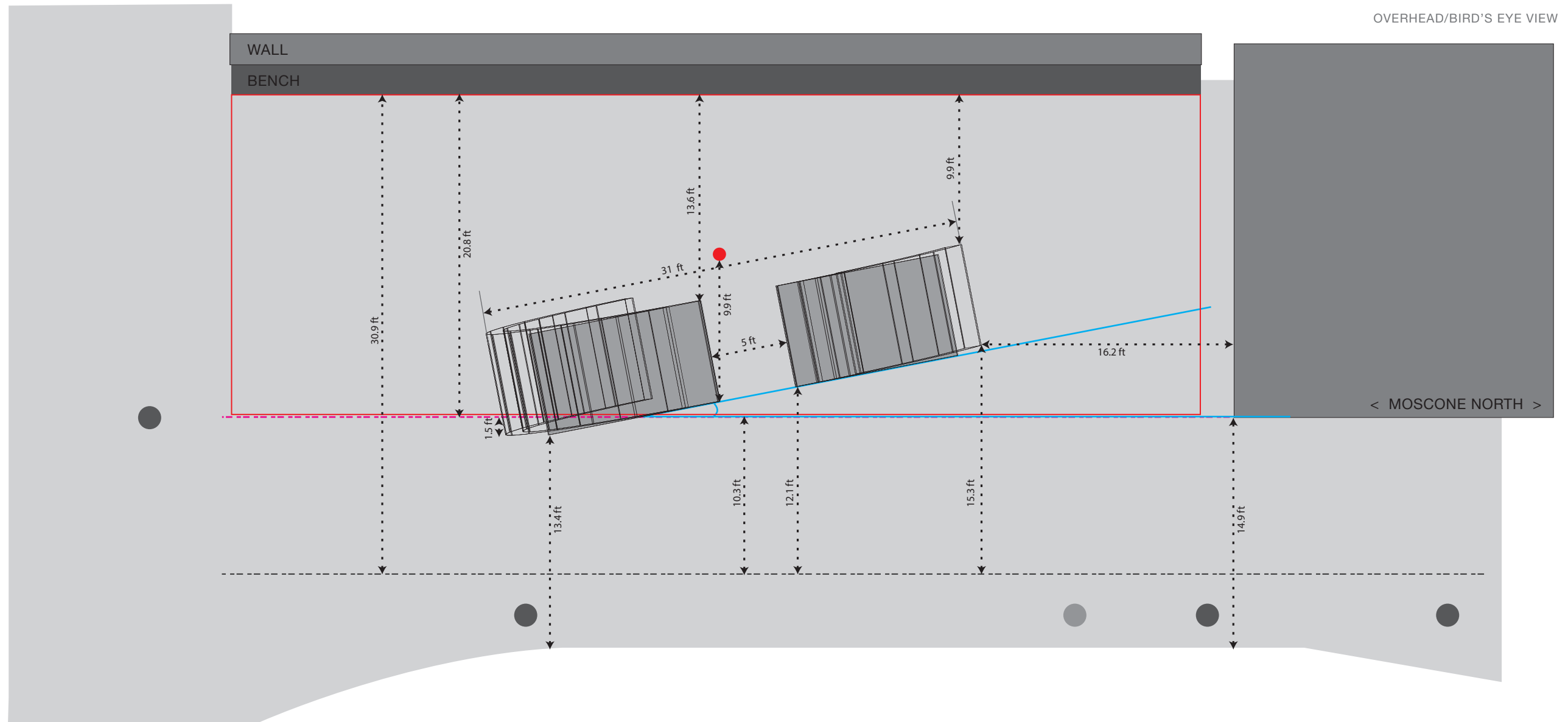
OVERALL DESIGN

Sculpture Angle: Set at 11° angle to Moscone North Building Face
Location on Plaza: Front base edge of Major Arc is placed forward of center of Plaza by 9.9 ft

Dimensions of Sculpture: 351 in (29.25 ft) [h] x 79 in (6.6 ft) [w] x 13 in [d]
372 in (31 ft) OD diameter or length

Set at 11° angle--across the street the Sculpture interplays as line
As visitor approaches across street or towards Sculpture from sidewalk the depth and thickness
have a more intense experiential dynamic

OVERHEAD/BIRD'S EYE VIEW



OVERALL DESIGN

Sculpture Angle: Set at 11° angle to Moscone North Building Face

Location on Plaza: Front base edge of Major Arc is placed forward of center of Plaza by 9.9 ft

Dimensions of Sculpture: 351 in (29.25 ft) [h] x 79 in (6.6 ft) [w] x 13 in [d]
 372 in (31 ft) OD diameter or length

Set at 11° angle--across the street the Sculpture interplays as line
 As visitor approaches across street or towards Sculpture from sidewalk the depth and thickness
 have a more intense experiential dynamic

----- LOCATION ANGLE

Sculpture is set at approximate angle of 11 degrees from face plane of Moscone.
 The exact degree [+/_ few degrees from 11] will be set during creation of construction/engineering drawings

----- BUILDING FACE PLANE

Major Arc of Sculpture "breaks" the place of the building by approx 1.5 ft.
 This section of the Major Arc will be visible on approach of Moscone walking the north side of Howard

----- PLAZA / PLAZA CENTER

Red line shows the plaza and Red dot shows the center of this

●●● SIGNAGE / LIGHTS / KNOWN OBJECTS

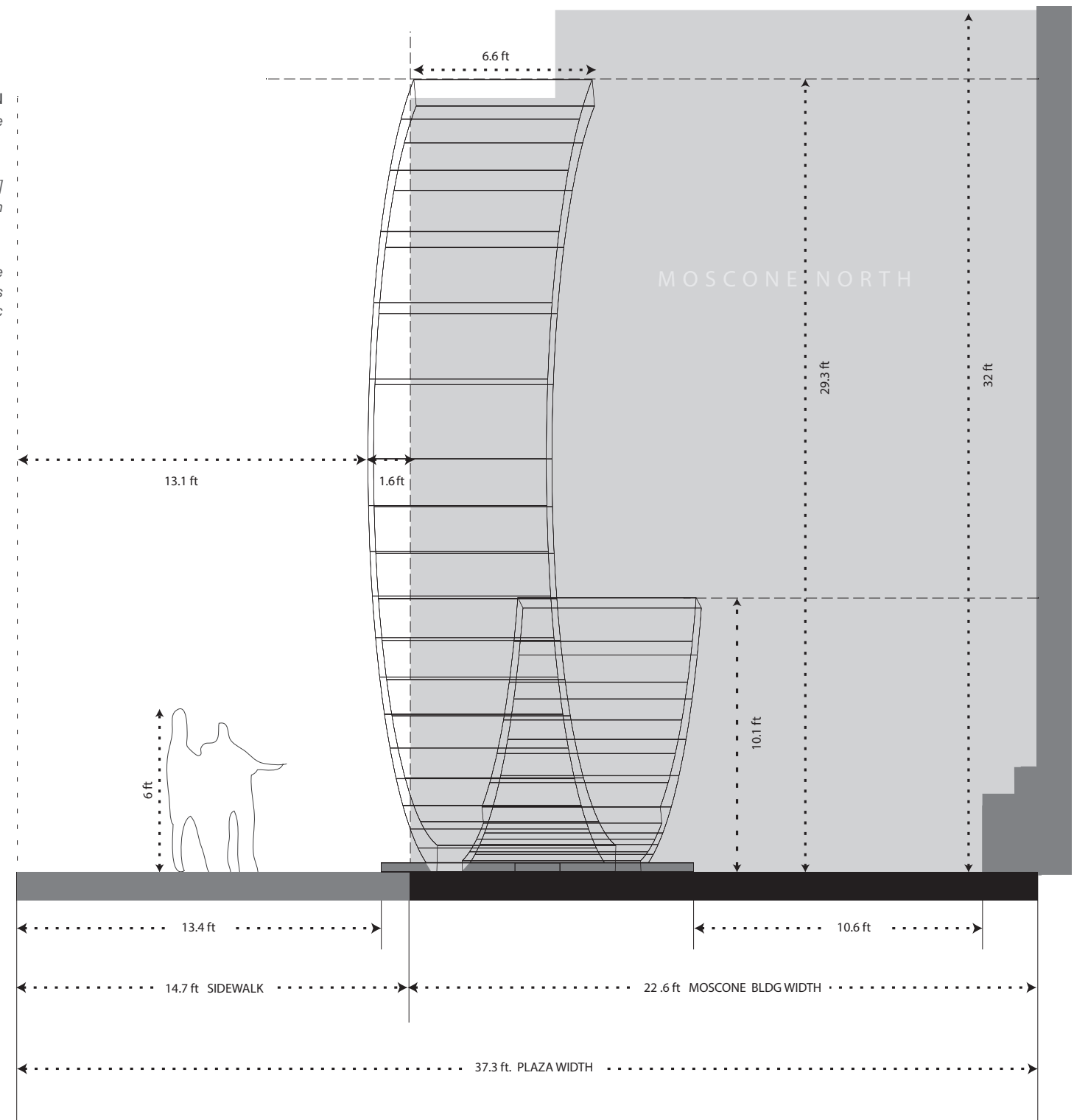
Dark Grey Dots signify known SOM signage and City Traffic Signal
 Light Grey Dot is a current streetlight in question if will remain during reconstruction

LOCATION VIEW 3 [SIDE-ON PLAZA]

OVERALL DESIGN
 Sculpture Angle: Set at 11° angle to Moscone North Building Face
 Location on Plaza: Front base edge of Major Arc is placed forward of center of Plaza by 9.9 ft

Dimensions of Sculpture: 351 in (29.25 ft) [h] x 79 in (6.6 ft) [w] x 13 in [d]
 372 in (31 ft) OD diameter or length

Set at 11° angle--across the street the Sculpture interplays as line
 As visitor approaches across street or towards Sculpture from sidewalk the depth and thickness
 have a more intense experiential dynamic



LOCATION VIEWS 4 [ACROSS HOWARD, WALKWAY, AND PEDESTRIAN BRIDGE]

ANGLE DESIGN

Sculpture Angle: Set at 11° angle from Moscone North Building Face
Location on Plaza: Front base edge of Major Arc is placed forward of center of Plaza by 9.9 ft

Dimensions of Sculpture: 351 in (29.25 ft) [h] x 79 in (6.6 ft) [w] x 13 in [d]
372 in (31 ft) OD diameter or length

Set at 11° angle--across the street the Sculpture interplays as line
As visitor approaches across street or towards Sculpture from sidewalk the depth and thickness have a more intense experiential dynamic

