



**ROSSI POOL PUBLIC ART SELECTION PANEL
PANEL TWO
SUMMARY**

MEETING DATE

November 30, 2016

VOTING SELECTION PANELISTS

Michael Arcega, Arts Professional
JD Beltran, Arts Commissioner
Rafael Gutierrez, San Francisco Public Works
Aimee Le Duc, Arts Professional
Kirk Robarge, Community Representative

PROCESS

The following artists presented an overview of their practice and proposals for the Rossi Pool Public Art Project:

Kelly Ording
Lordy Rodriguez
Owen Smith

The panelists were asked to discuss and evaluate each of the proposals on the following criteria:

- Aesthetic quality
- Appropriateness of the proposed artwork for the site and project goals
- Demonstrated feasibility of the preliminary proposal and the proposal budget
- Demonstrated maintainability and durability of the artwork's design, materials, fabrication and installation methods

The panelist then ranked the artists 1, 2, or 3 (1 = highest rank) accordingly.

RESULTS OF VOTING TALLY

Kelly Ording	11
Lordy Rodriguez	8
Owen Smith	5

ARTS COMMISSION APPROVAL

Motion: Motion to approve the artist Owen Smith and proposal for the Rossi Pool Public Art Project as recommended by the Artist Selection Panel.

Motion: Motion to authorize the Director of Cultural Affairs to enter into contract with artist Owen Smith for an amount not to exceed \$58,250 for design, fabrication, transportation and installation of an artwork for the Rossi Pool Public Art Project.

OWEN SMITH

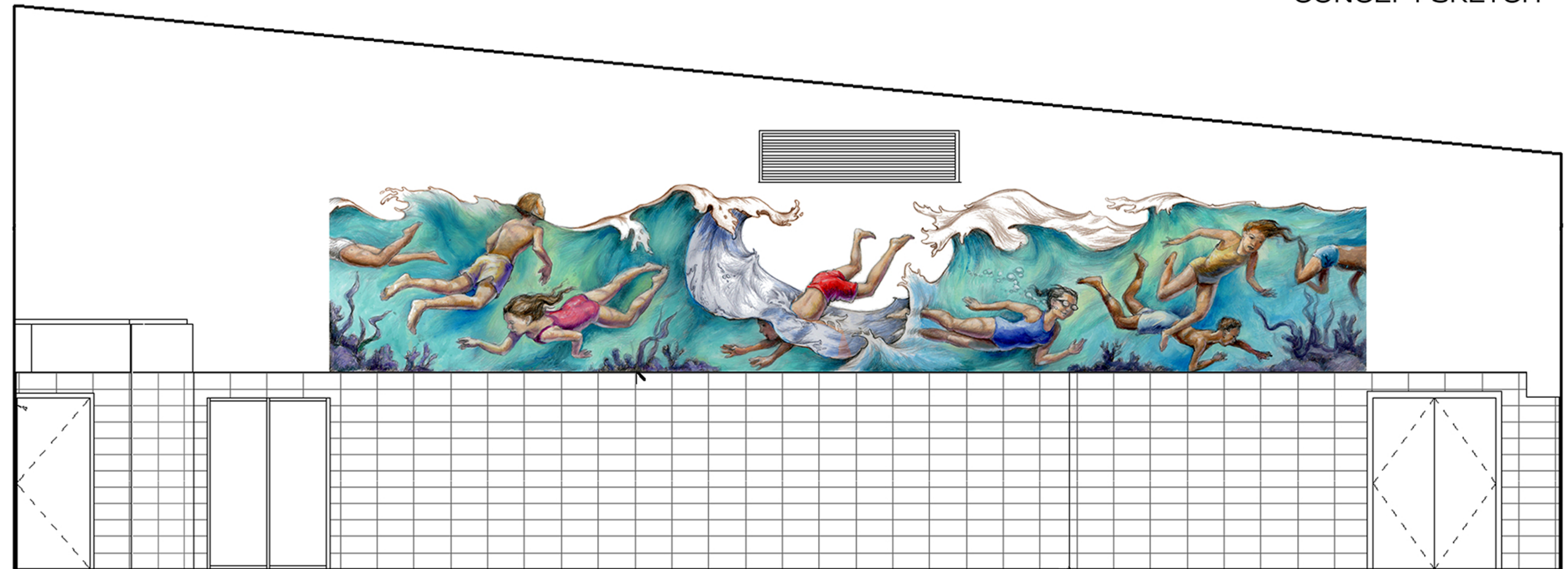
ART PROPOSAL FOR THE ROSSI POOL PUBLIC ART PROJECT



CONCEPT SKETCH

IMAGERY:

SWIMMING HAS MANY BENEFITS, BOTH PHYSICAL AND MENTAL. WATER HAS THE ABILITY TO BUOY UP OUR BODIES AS WELL AS OUR SPIRITS, NO MATTER WHAT OUR AGE. THE MURAL FOCUSES ON THE YOUTHFUL JOY OF CHILDREN FROLICKING IN A FANTASY OF UNDERWATER LIFE. THE MURAL DEPICTS AN ETHNICALLY DIVERSE REPRESENTATION OF GIRLS AND BOYS. THE MURAL IS MEANT TO BE EVOCATIVE OF HAPPY MEMORIES OF YOUTH, OPTIMISM, FREEDOM AND THE SENSUAL PLEASURE OF GLIDING THROUGH THE WATER



EXAMPLES OF OTHER FINISHED PAINTINGS



MATERIALS:

THE MURAL IS COMPOSED OF (14) 4' X 6' DYE INFUSED ALUMINUM PANELS, TILED TO HAVE AN OVERALL DIMENSION OF ROUGHLY 8' HIGH BY 42' WIDE. THE TOP EDGE OF THE MURAL WILL BE CNC CUT TO FOLLOW THE CONTOURS OF THE WAVES. ADDITIONALLY, THERE COULD BE CNC CUT DETAILS THAT WOULD FLOAT ABOVE THE SURFACE OF THE MURAL TO CREATE A SHALLOW DIMENSIONAL EFFECT. EACH PANEL IS REINFORCED WITH A 3/4" BOARD TO ELIMINATE BOWING. THE RIGID BACK HAS STEEL REINFORCED HOLES FOR EASY MOUNTING ON THE WALL. THERE ARE RUBBER BUMPERS ON ALL FOUR CORNERS TO STABILIZE THE ART ON THE WALL. EACH PANEL IS FRAMELESS TO CREATE A CLEAN CONTINUOUS PRESENTATION.

