

137' - 9"



26' - 3" +/-

137' - 9"

EXISTING MURAL

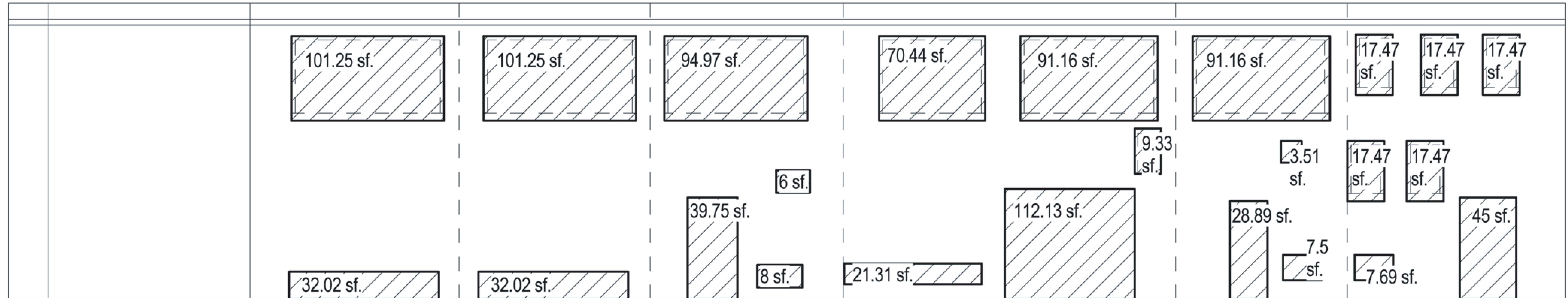
ARTIST PANEL #1

ARTIST PANEL #2

ARTIST PANEL #3

ARTIST PANEL #4 & 5

ARTIST PANEL #6



26' - 3" +/-

21' - 4 3/8"

18' - 6"

16' - 11"

17' - 1"

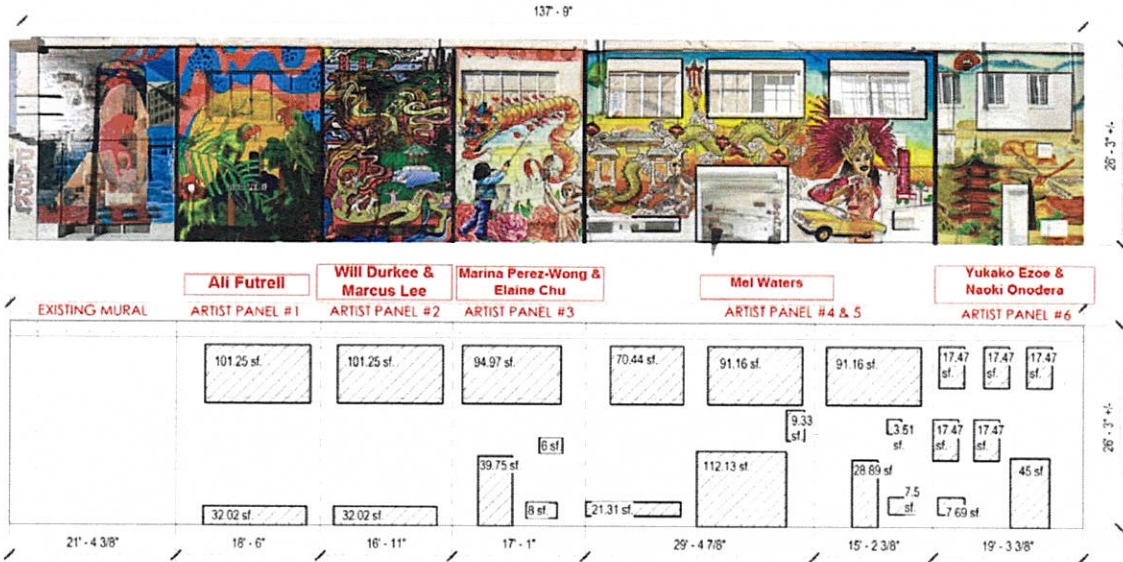
29' - 4 7/8"

15' - 2 3/8"

19' - 3 3/8"

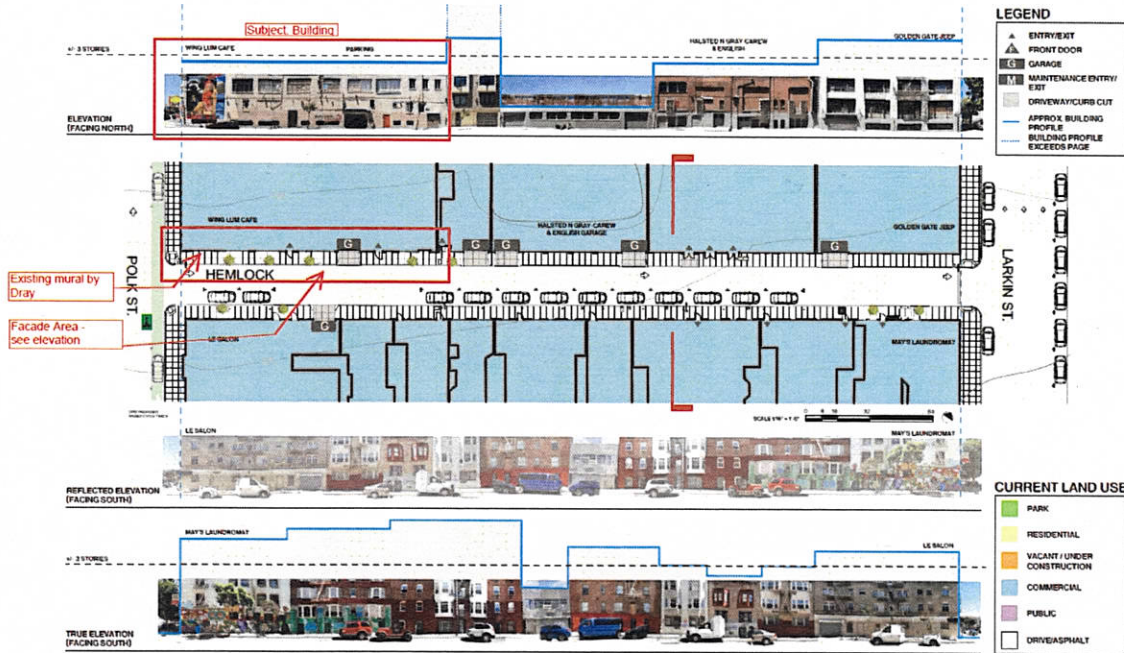
# Exhibit B

## Scale Master Drawing



# Exhibit A

## Site Plan



### HEMLOCK EAST (POLK TO LARKIN)

Lower Polk Alleys October 7th, 2015





NO  
PARKING  
ANY  
TIME

NO  
PARKING  
PARK  
\$3.00

USSMANN  
Car Wash



TELEGRAPH HILL





AMERICAN  
PIRIT

HIP-NORADSYK

-NO-  
Overlaid  
Vans, Trucks  
or SUVs

OPEN UNTIL 2:00AM!

**PARK**

←

**\$3.00**

EACH 30 MINUTES

MAXIMUM \$15.00

STREET PARKING

PLEASE USE HANDRAIL

ENTRANCE

