



TITLE: San Francisco International Airport, AirTrain Extension and Improvement Project

Date: January 31, 2017

PROJECT BACKGROUND: The AirTrain Extension and Improvement project extends the guideway for the Blue Line approximately 1,900 linear feet from its current terminus near the existing rental car facility, crossing over North McDonnell Road and San Bruno Avenue and terminating in Lot DD south of the existing parking garage and planned second parking garage (LTP2). The Project includes two new stations including the end of the line station (LTP Station) located at Lot DD, and an in-line station (Hotel Station) serving a future hotel.

DESIGN GOALS: The overarching design goals are the principles of REACH (Revenue Enhancement and Customer Hospitality), as well as a focus on sustainability.

ART PROJECT GOALS: San Francisco International Airport's public art program, provided by the San Francisco Arts Commission, offers a permanent collection of paintings, sculptures and site-specific artworks that reflect the Bay Area's vibrant and diverse culture. The collection comprises close to 100 pieces in a diversity of styles and media by artists of local, national and international acclaim. Our goal for the extension of the AirTrain is to commission dynamic contemporary art that offers the traveler a powerful and continuous experience with art within the context of the airport environment. This will include the selection of artists to site-specific artworks and architecturally integrated pieces.

ARTWORK OPPORTUNITIES:

1. An integrated glass artwork at both the hotel and LTP garage stations and associated connector bridges (approx. 15'x10'x40'). The SFAC will work with the design team to define the exact locations.

2. Two 2D opportunities exist within the lobby of the hotel station. On the end wall (10'x16') and on parallel fascia walls. These opportunities will depend upon the design of the building, which is still in flux.

3. Relocation of the collections' existing sculpture 'Yin & Yang' by Robert Arneson to the LTP garage station. The viability of these opportunities will depend upon the design of the building, which is still in flux.

BUDGET:

Admin	Amount	Other funding source
Total budget	\$1,450,000.00	
Admin	\$290,000.00	
Conservation	\$145,000.00	
Other project costs	\$15,000.00	
Install of Ying & Yang (LTP garage station)	\$0.00	\$30,000.00
Hotel bridge (glass artwork)	\$0.00	\$300,000.00
Integrated glass artwork	\$600,000.00	
2D opportunities in hotel station lobby	\$300,000.00	
Contingency	\$100,000.00	
TOTAL	\$1,450,000.00	

SCHEDULE:

Selection Panel 1st meeting	March 2016
Selection Panel 2 nd meeting	May 2017
Approval of selected artists by VAC	June 2017
Approval of selected artists by Full Commission	July 2017
Artists under contract	October 2017

FURTHER INFORMATION

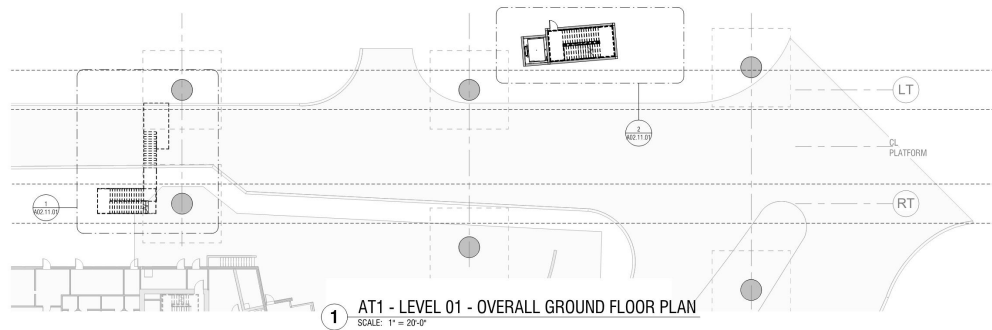
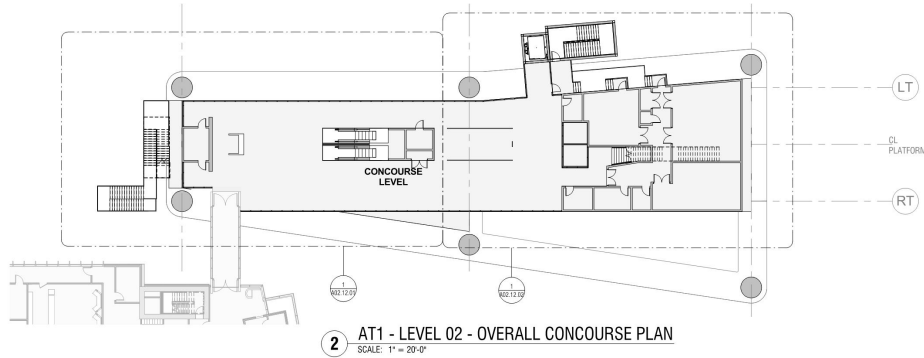
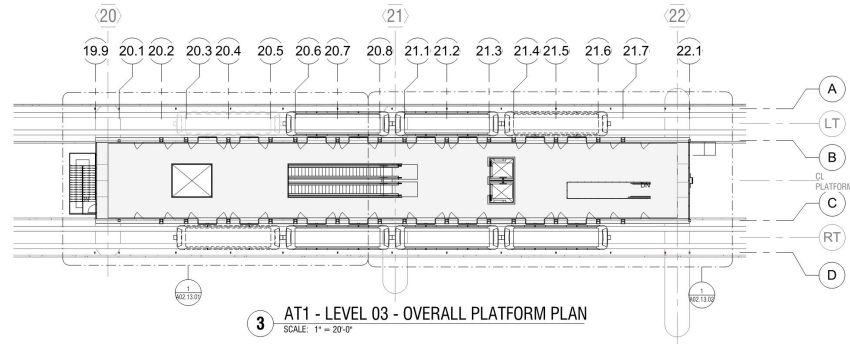
Contact Justine Topfer, Public Art Project Manager at (415)252-2228 or by email at Justine.topfer@sfgov.org.

SFO

San Francisco
International
Airport

Hotel Station



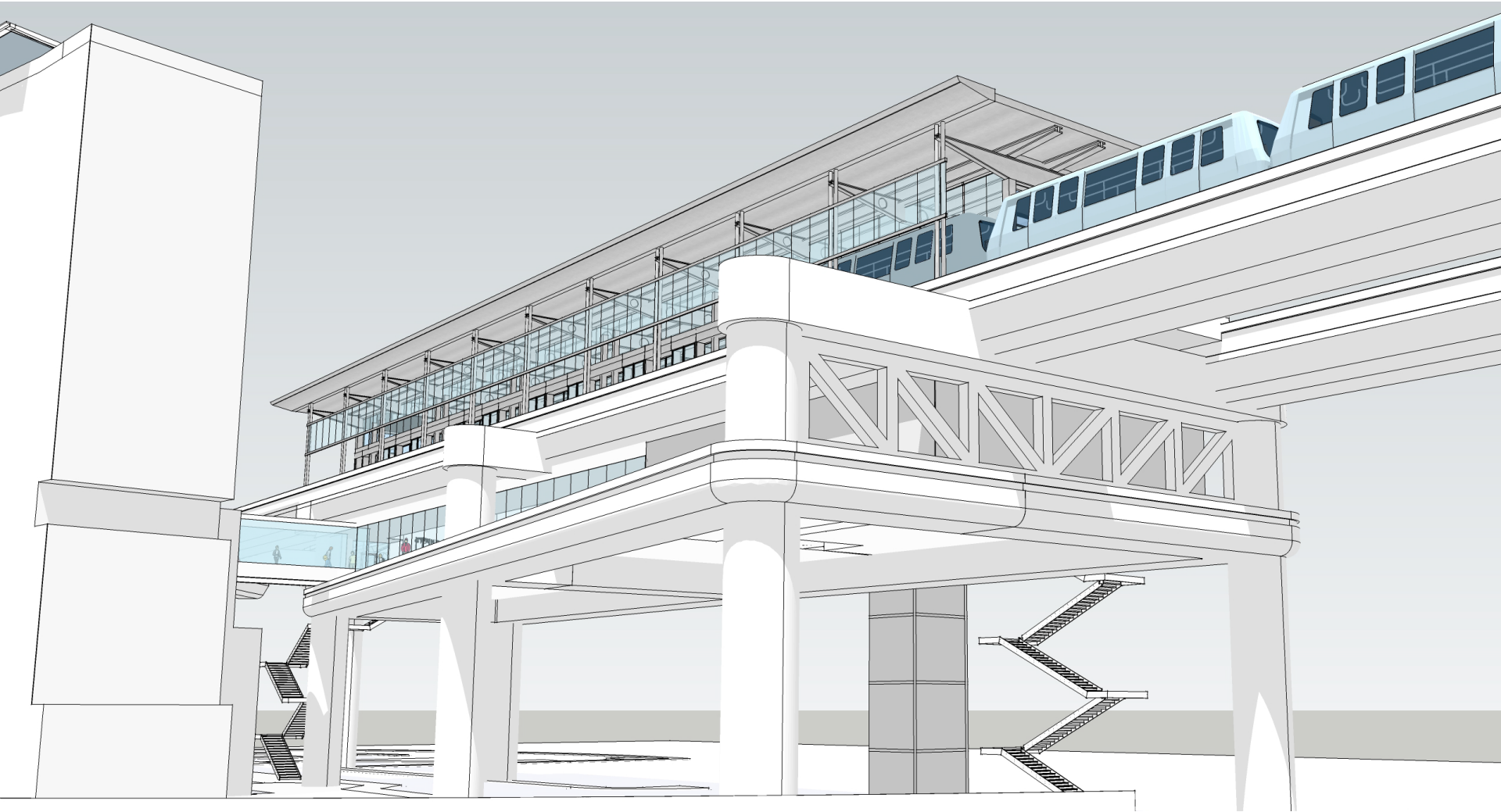


CONTRACT NO.	10504.66
PROJECT TITLE	SFO AIRTRAIN EXTENSION AND IMPROVEMENTS PROGRAM
SHEET TITLE	AT1 - HOTEL STATION OVERALL PLANS
DATE	
NO.	
DATE	
REVISIONS	
BY	

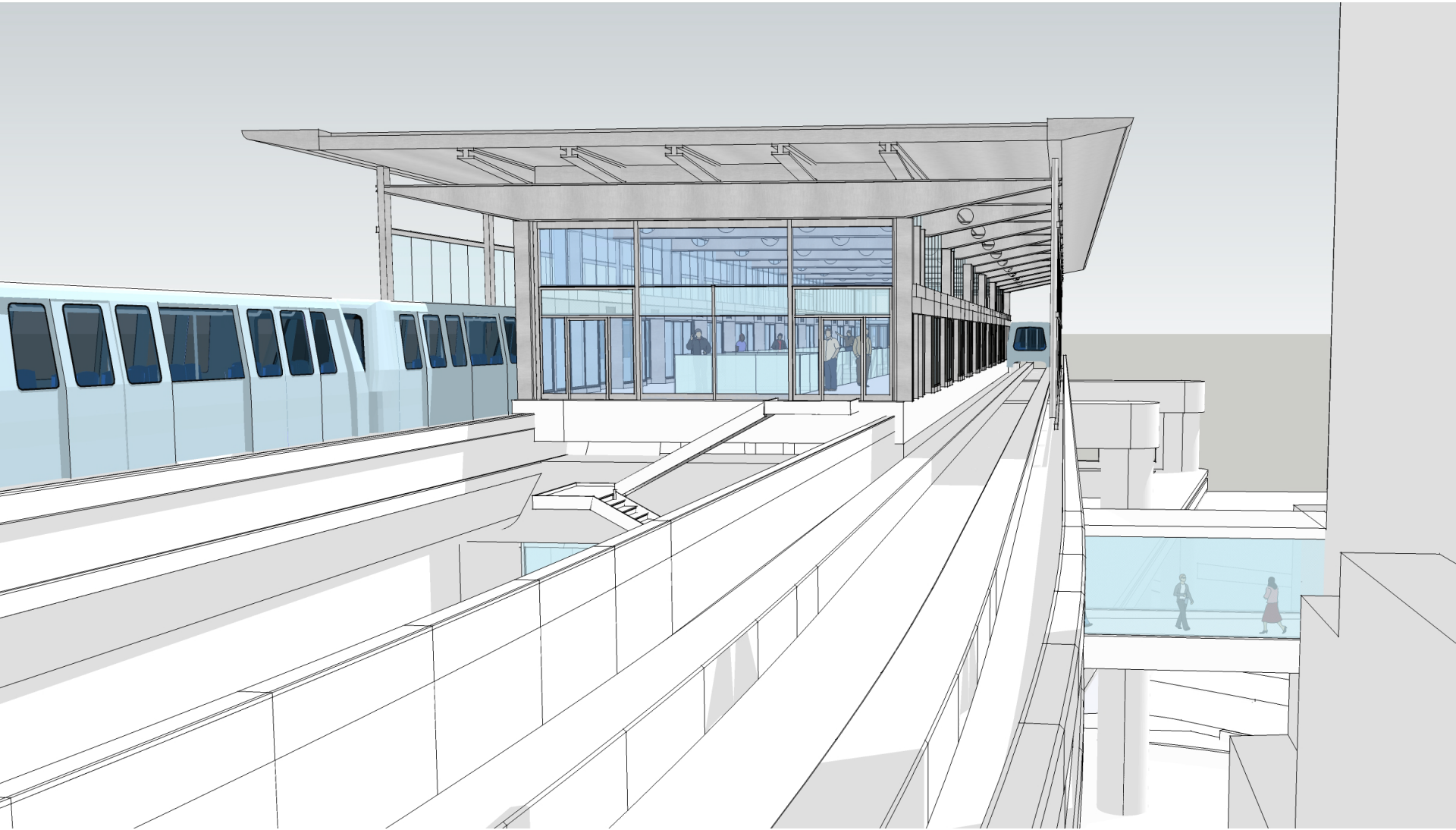
APPROVED:	
CHIEF DEVELOPMENT OFFICER	
APPROVED:	
PRINCIPAL ARCHITECTS ENGINEER	
APPROVED:	
DESIGNED BY:	
R. CHONG	
DRAWN BY:	
M. LAMM	
SCALE:	
AS NOTED	
SHEET NUMBER:	
A02.10.00	

DATE:	APRIL 26, 2017
SIZE:	
REVISION:	
AND-B	

Hotel Station – Floor Plans



Hotel Station – Roof Study 2



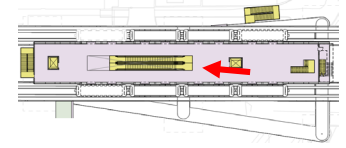
Hotel Station – Roof Study 2



Hotel Station – Roof Study 2



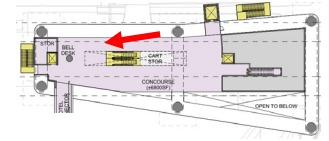
San Francisco
International
Airport



Hotel Station – Platform Elevator Landing



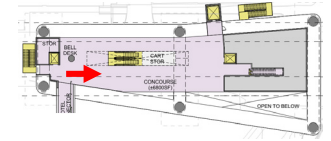
San Francisco
International
Airport



Hotel Station – Concourse



San Francisco
International
Airport



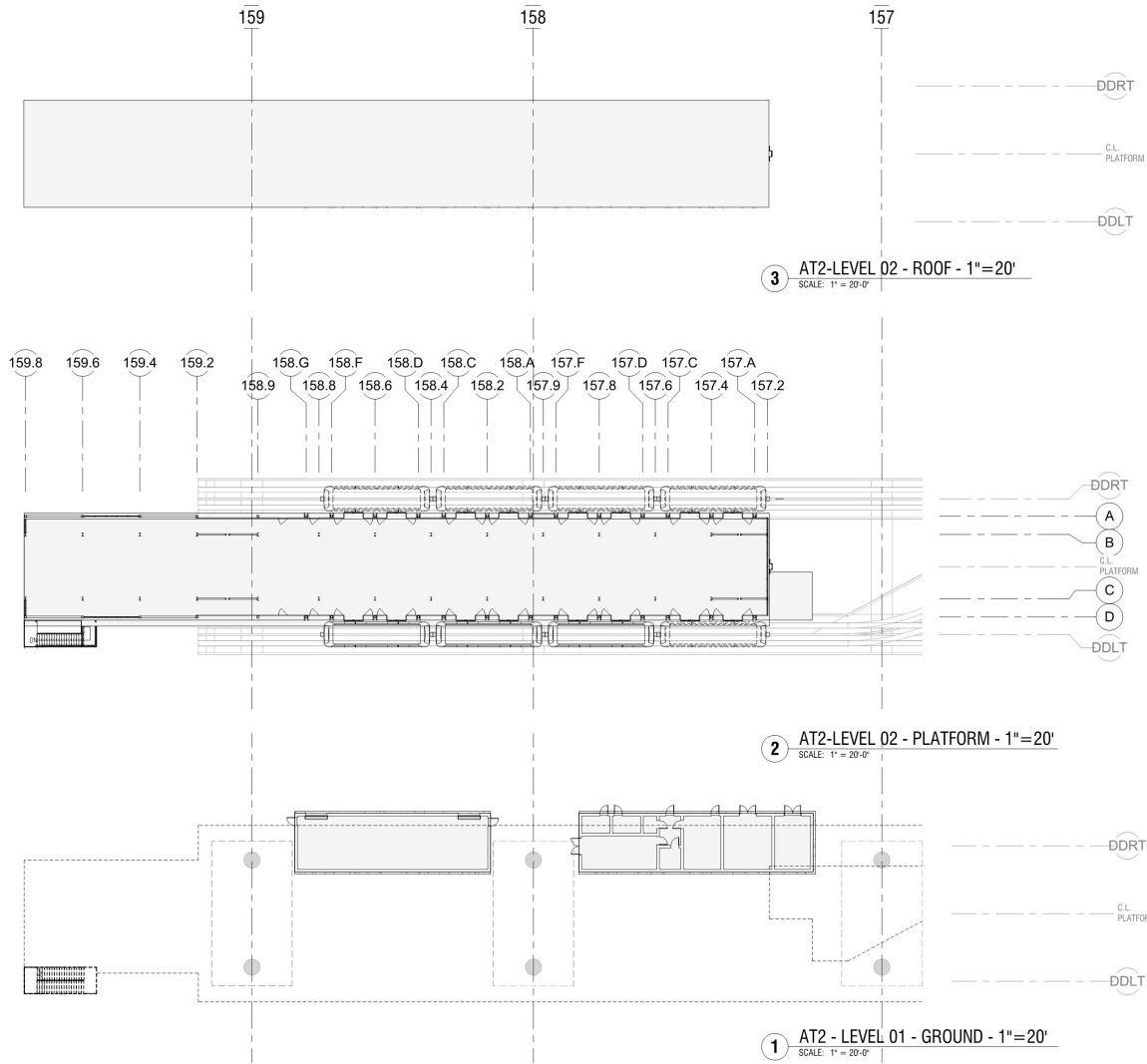
Hotel Station – Concourse

SFO

San Francisco
International
Airport

Long Term Parking Station





NOTE:
REVISIONS TO THE PROJECT BOUNDARY AND SCOPE OF WORK, AND TO THE CONFIGURATION OF THE PEDESTRIAN BRIDGE CONNECTION BETWEEN LTP#2 AND THE AIRTRAIN STATION ARE UNDER WAY AT THE TIME OF SCHEMATIC DESIGN SUBMITTAL. REFER TO THE SCHEMATIC DESIGN REPORT.

San Francisco International Airport

SKANSKA
1300 Harrison St., #1950
Oakland, CA 94612
skanska.com

WSP
425 Market St., 17th Fl.
San Francisco, CA 94105
wspgroup.com/us
gswork.com/us

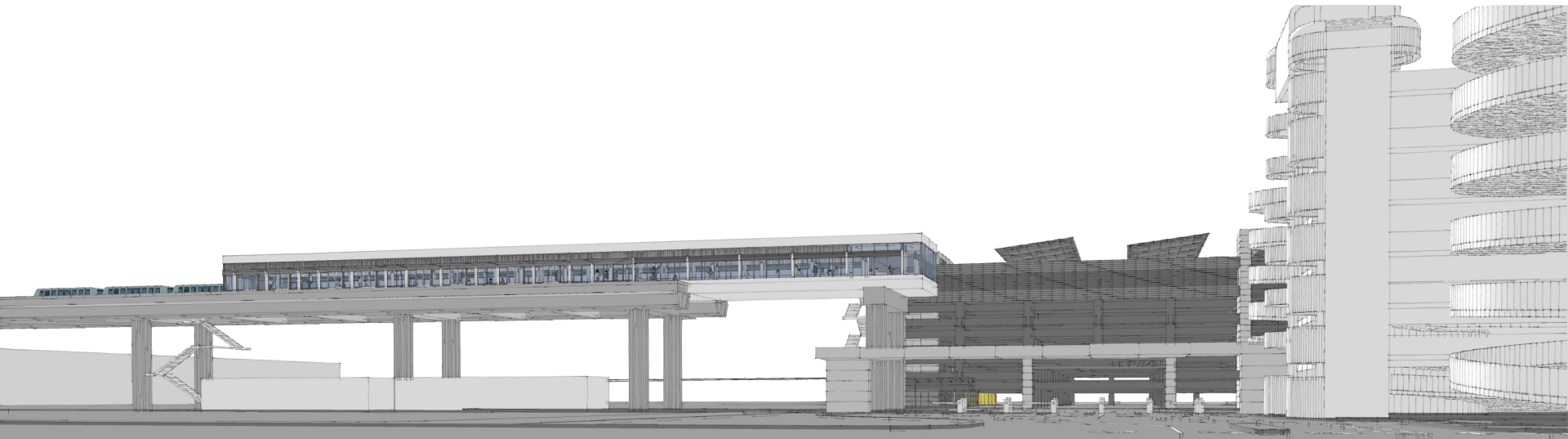
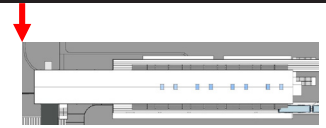
Robinson & Company
281 Triunfo Street
San Francisco, CA 94103
(415) 956-9000

REVISIONS NO. DATE DESCRIPTION	
CONTRACT NO. 10504.66	PROJECT TITLE SFO AIRTRAIN EXTENSION AND IMPROVEMENTS PROGRAM
SEAL	SUBJECT TITLE AT2 - LTP STATION OVERALL PLANS
APPROVED: CHIEF DEVELOPMENT OFFICER APPROVED: PRINCIPAL ARCHITECT/ENGINEER APPROVED:	
DESIGNED BY: R. CHANG	CHECKED BY: J. ANGLIM
DRAWN BY: M. CANE	DATE: JANUARY 26, 2017
SCALE: AS NOTED	S/D REVISION AS NOTED
SHEET NUMBER: A02.20.00	
SCHEMATIC DESIGN	

LTP Station – Floor Plans



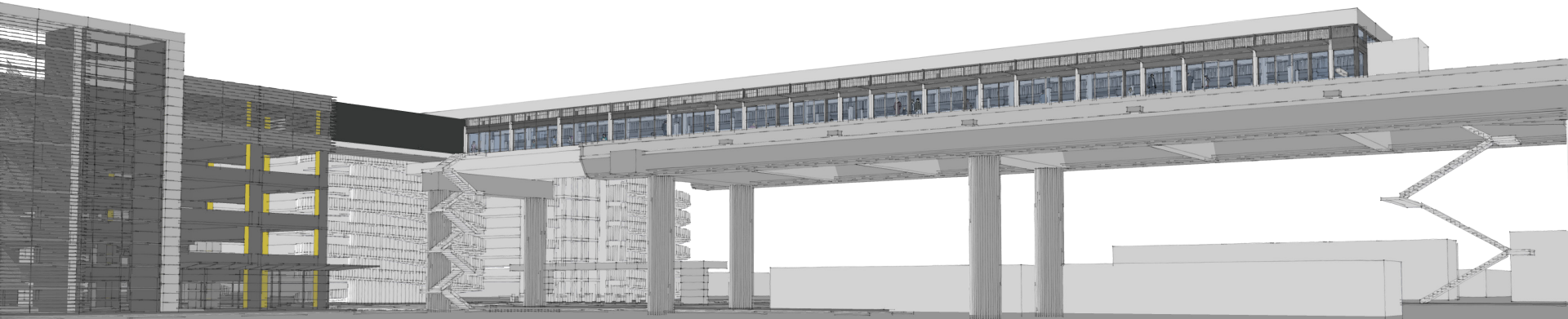
San Francisco
International
Airport



LTP Station – From street level



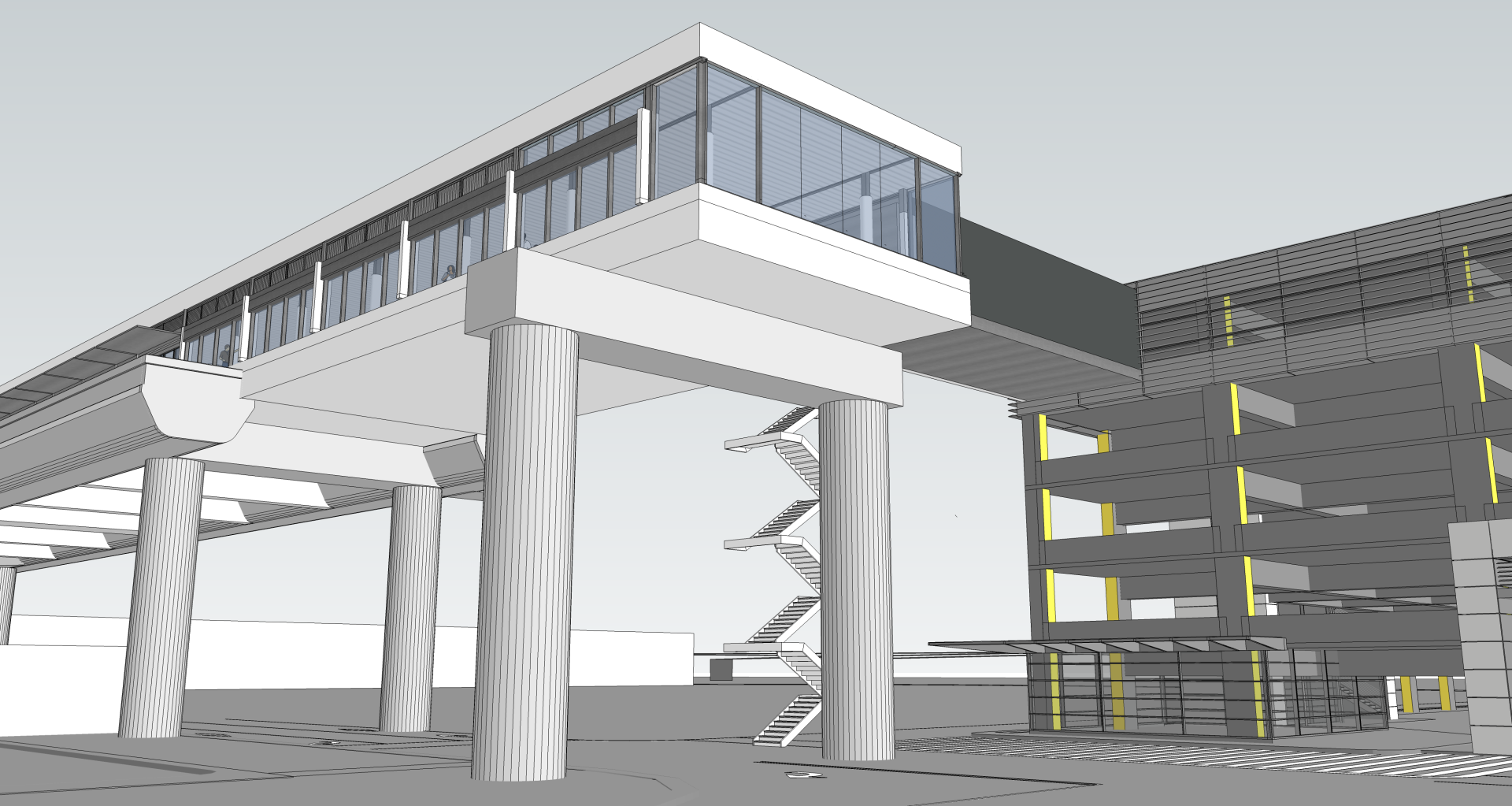
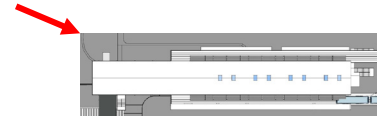
San Francisco
International
Airport



LTP Station – From street level



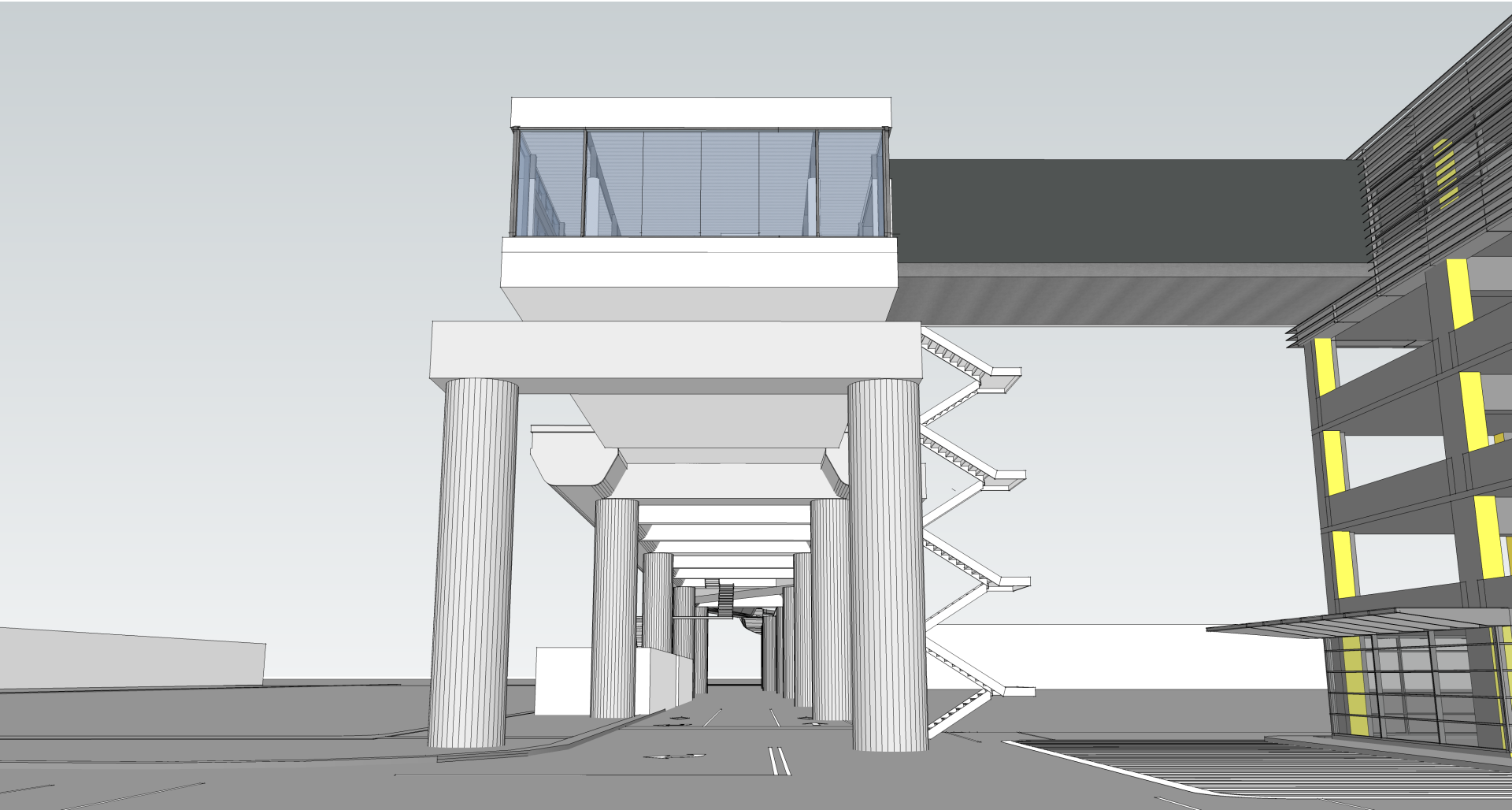
San Francisco
International
Airport



LTP Station – From street level



San Francisco
International
Airport



LTP Station – From street level

SFO

San Francisco
International
Airport



LTP Station