



SF-PUC Headworks Artwork Concept

The Bayview

Norie Sato

2-13-2017

NOT FOR PUBLIC DISTRIBUTION



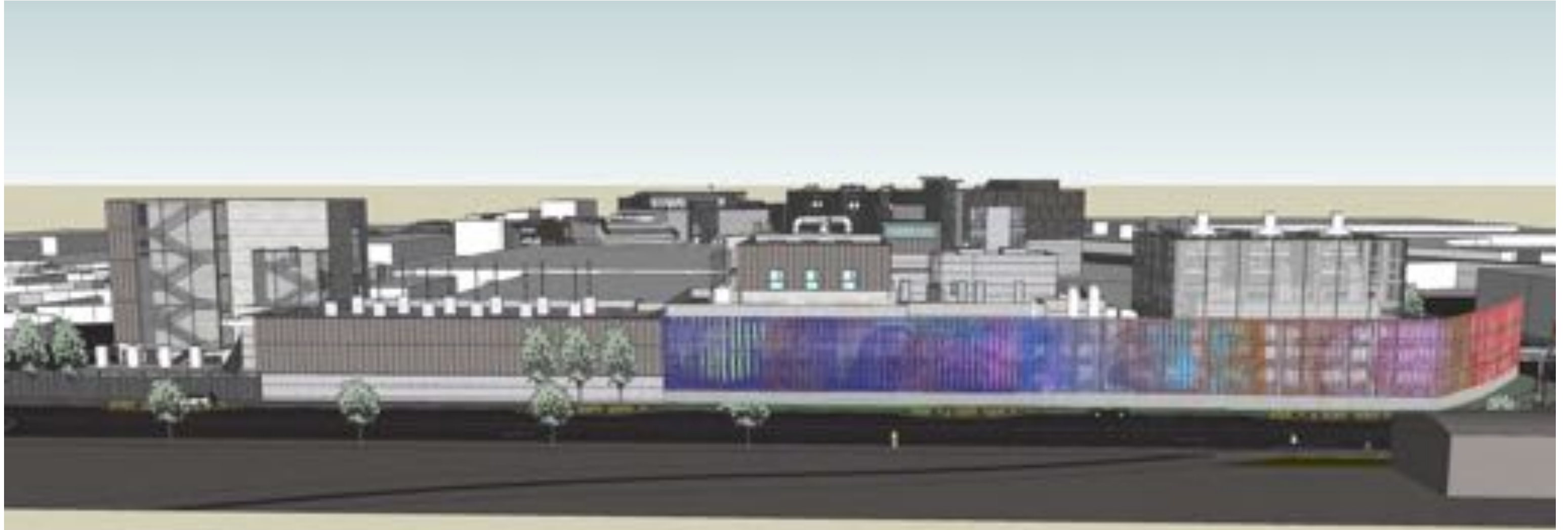
Community + Function
Human + Machine
Solid + Transparency
Pedestrian + Vehicle
Safety + Durability
Durable + Fine Touch
Unity + Diversity

Abstraction + Realism

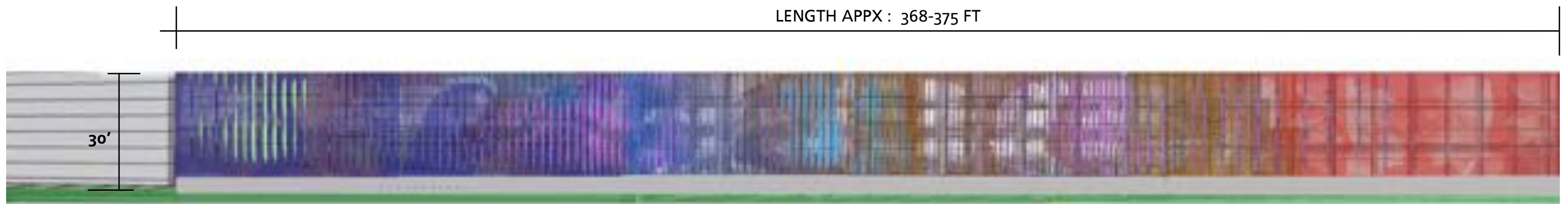
Layer

Color

Pattern



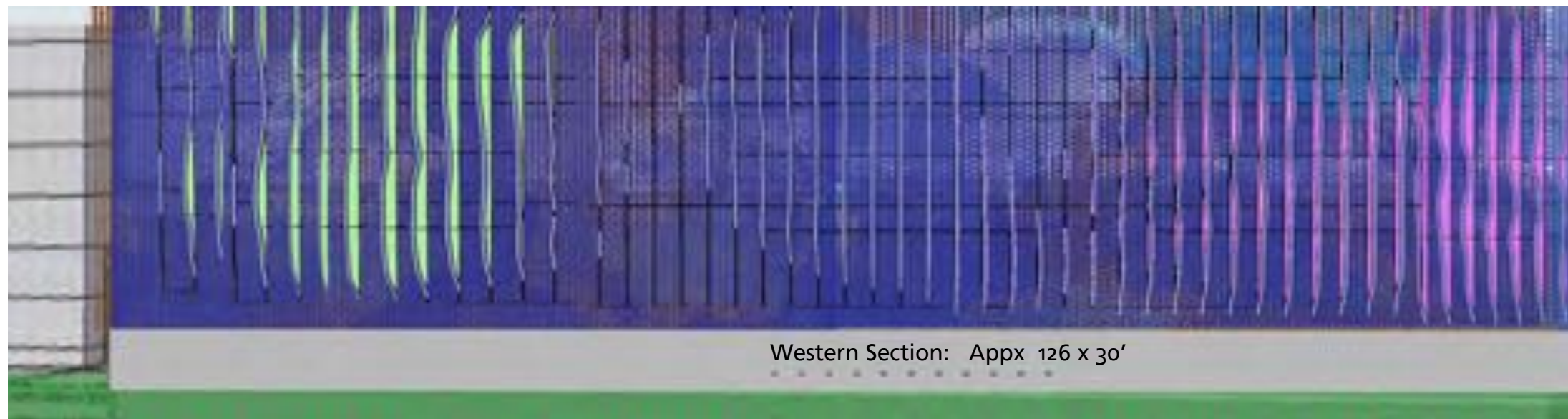
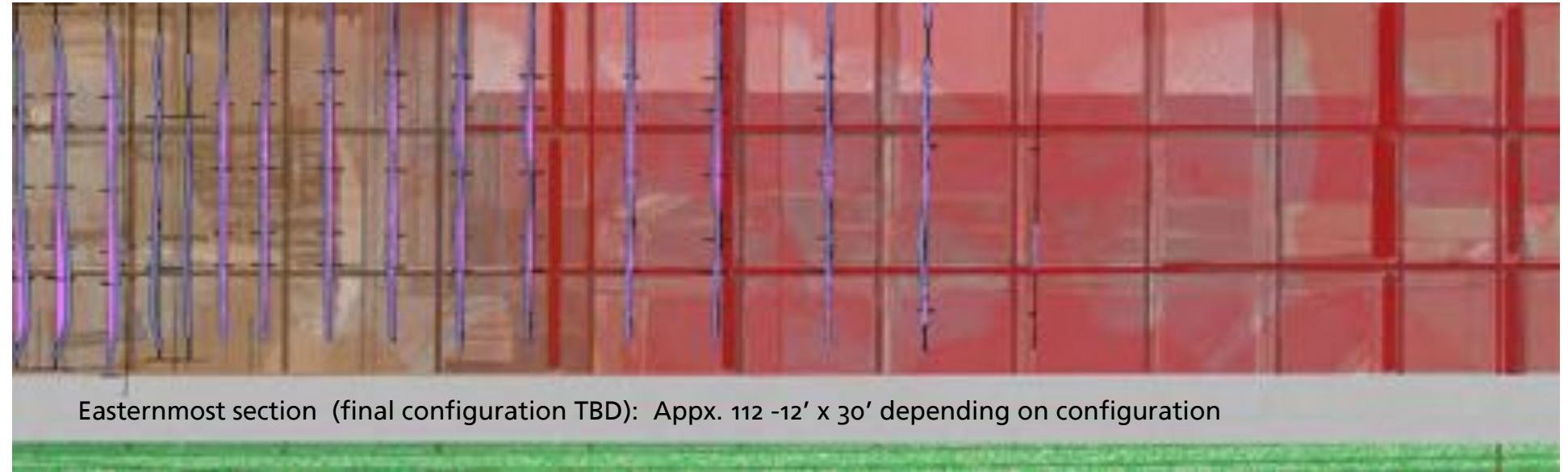
Artwork superimposed on site rendering



WALL ELEVATION FLATTENED

Larger view of the wall (3 basic sections)

NOTE: Profiles are for conceptual purposes only and do not indicate specific persons nor final images

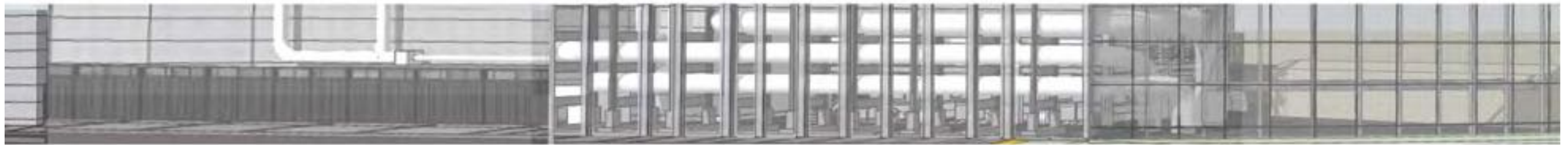


LAYERS :

1.: Base Structure allows a much view in as possible

2.: Under layer "Veil" is colored perforated metal with profile images which move from more robust (possibly layered at ends) to less intense in the center to more robust as it moves down Evans. Note: profiles shown are just samples only not final images.

3.: Over layer: Sculptural Fins derived from profiles are different colors in each direction and profiles move in and out of legibility. Starts sparse at east end, becomes more intense in center around the pipe structure and then becomes less intense toward the west



Base

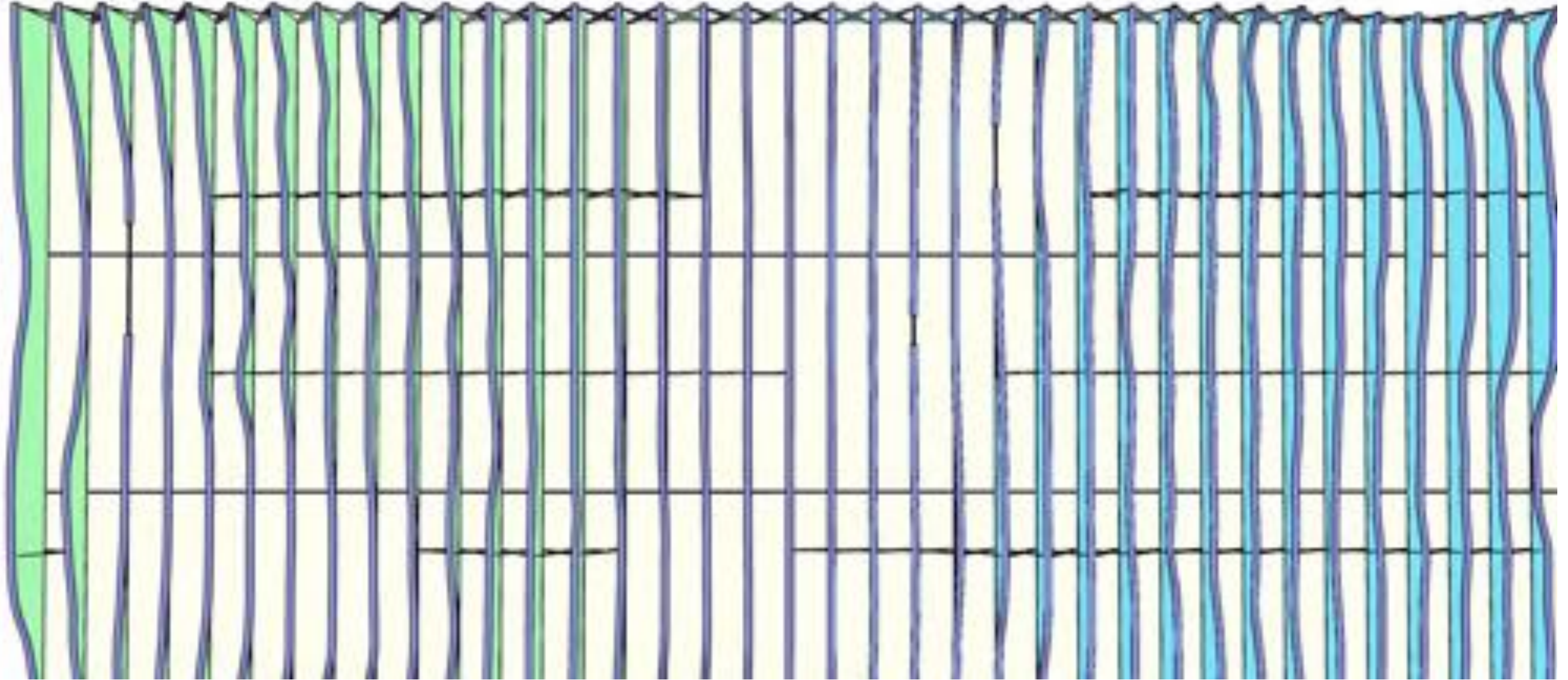
Veil Perforated Image layer



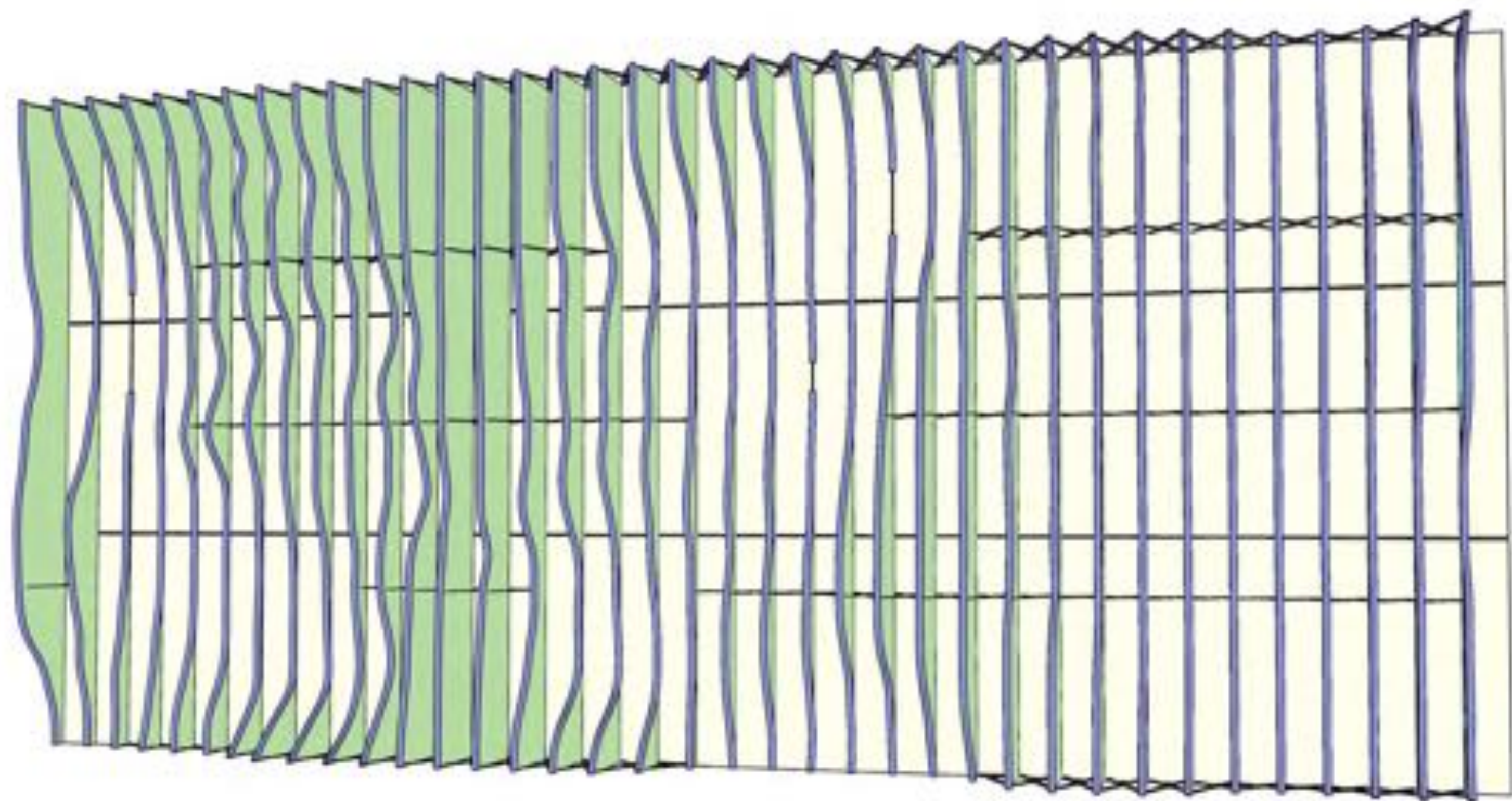
3-Dimensional Fins layer

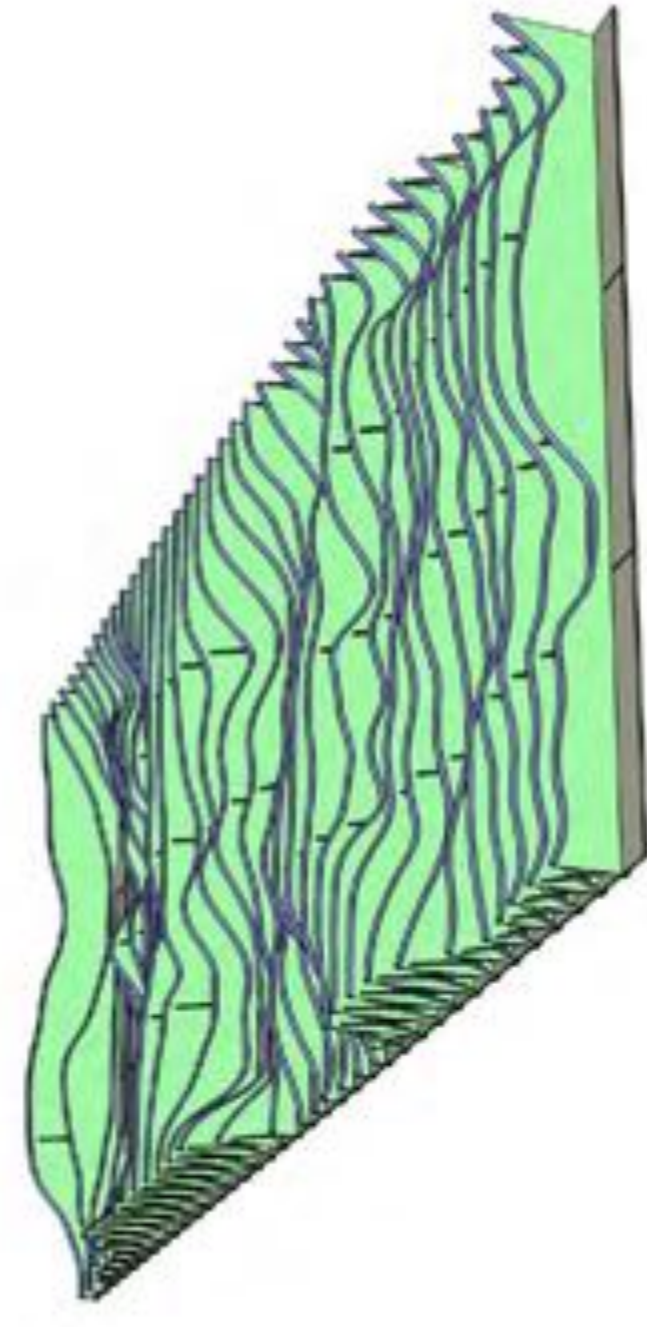
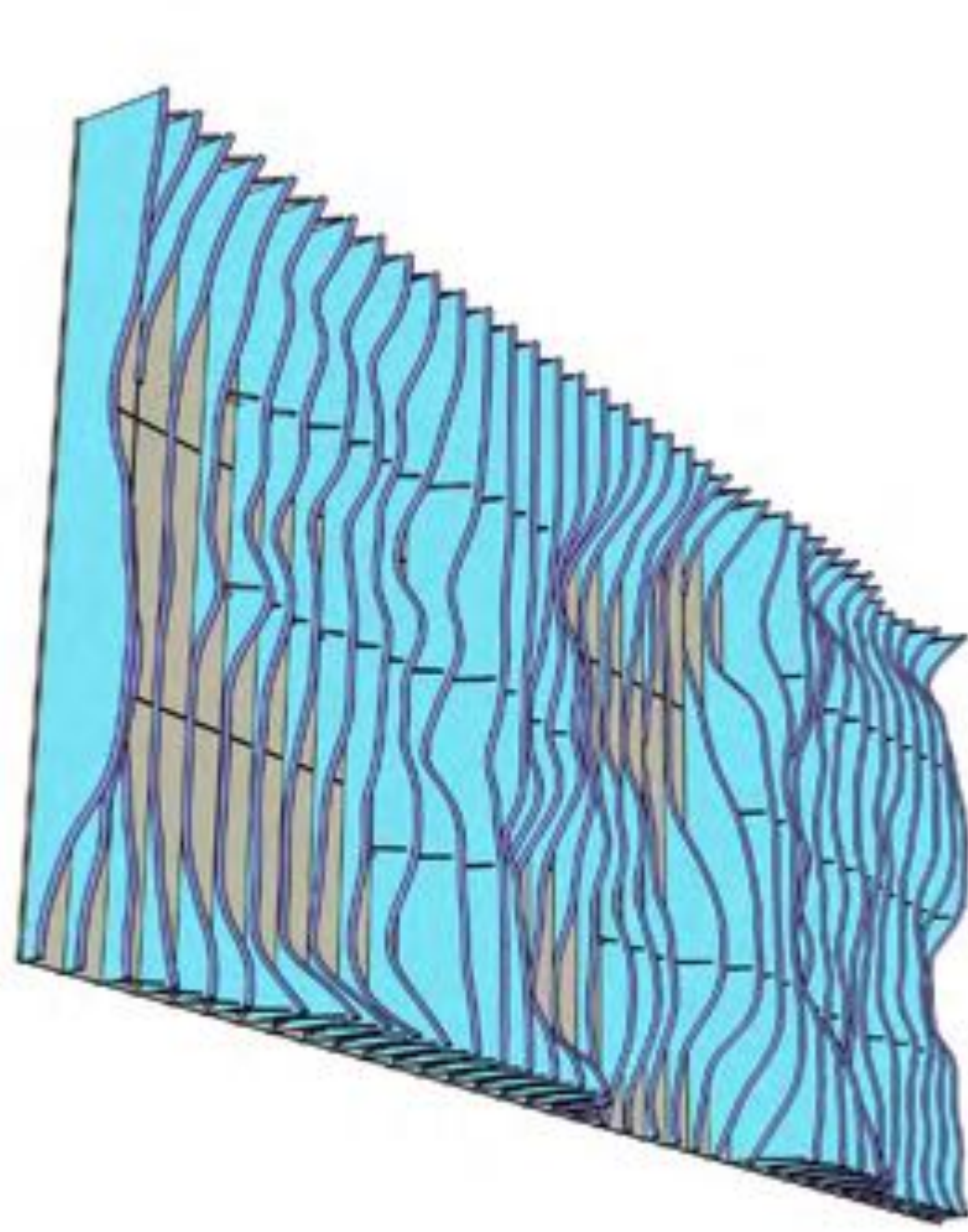
SAMPLE SCULPTURAL FIN WALLS FROM VARIOUS DIRECTIONS
the sculptural configurations are based on the "profile" images

NOTE: CONCEPTUAL ONLY



Is a different color on each side of the fin and changes as one moves along Evans Avenue

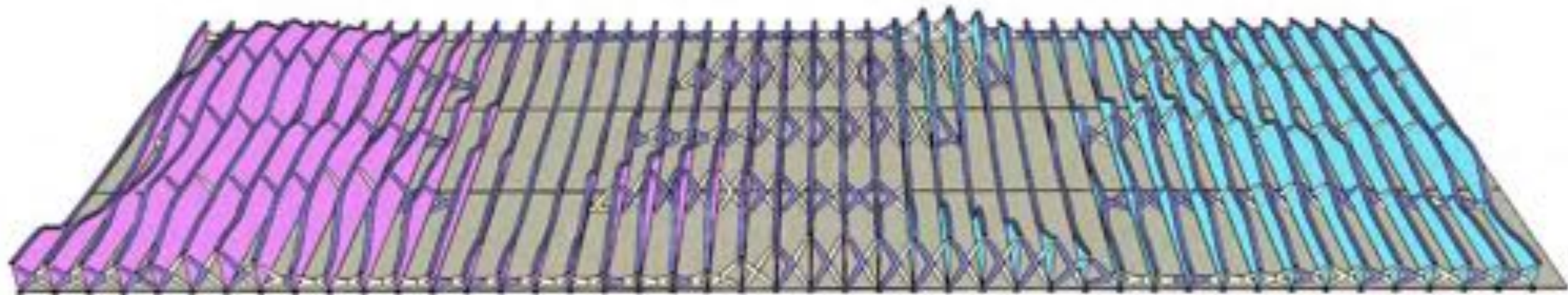




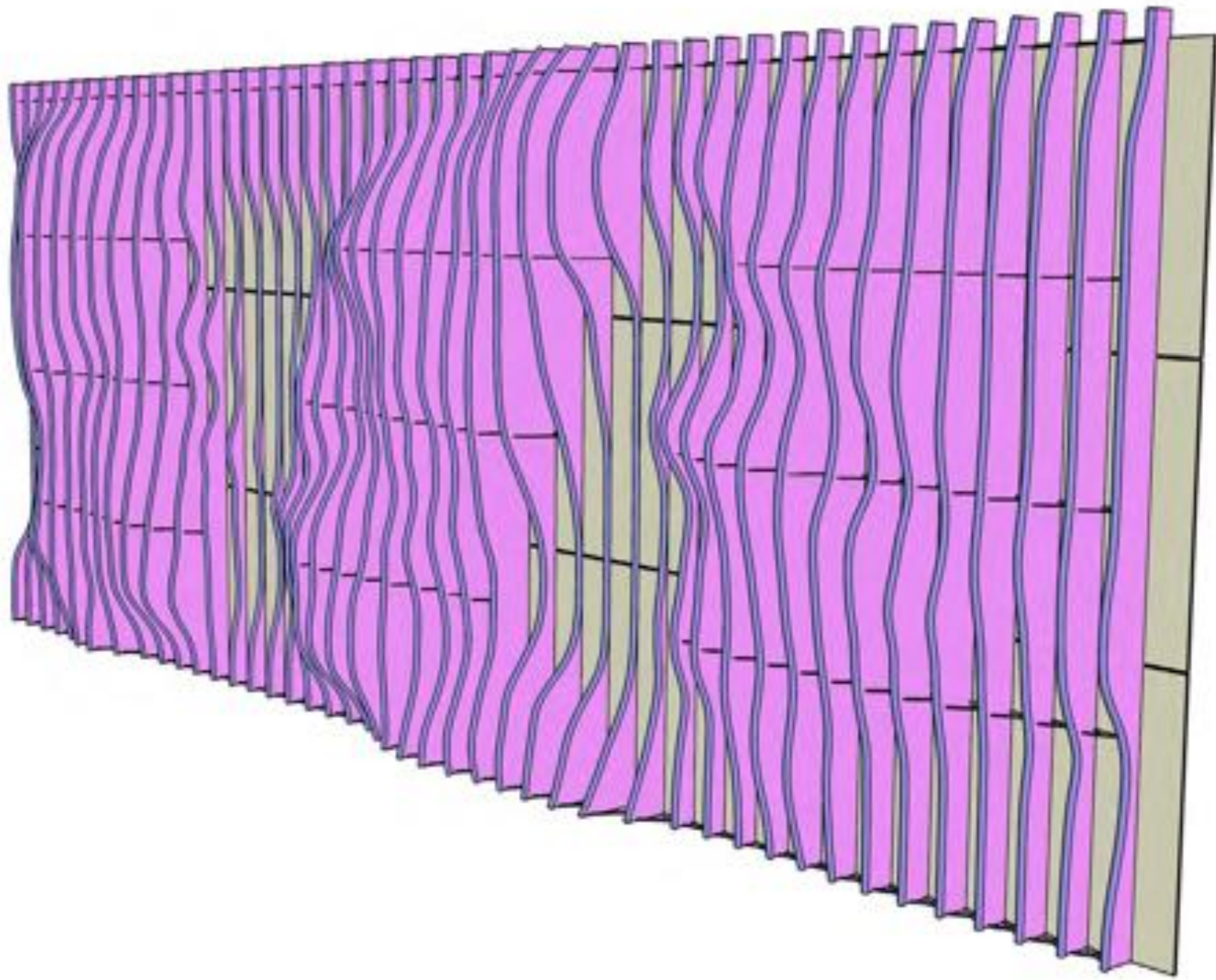
View from "below" from 2 different directions along Evans Avenue

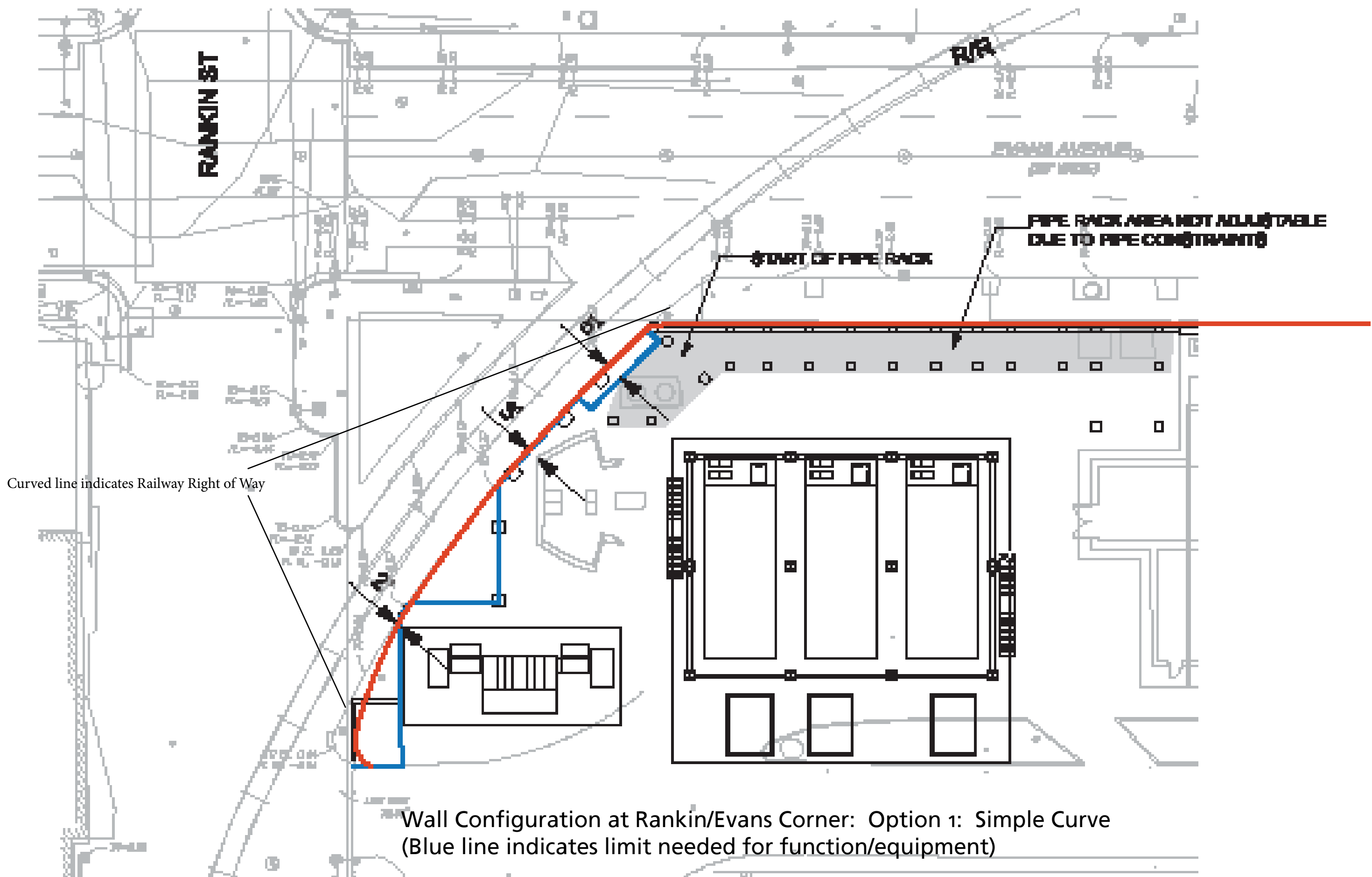


Another sample of the sculptural fin wall "straight on"



View showing some of the support structure for the fins from below





RANKIN ST

EVANS ALLEY

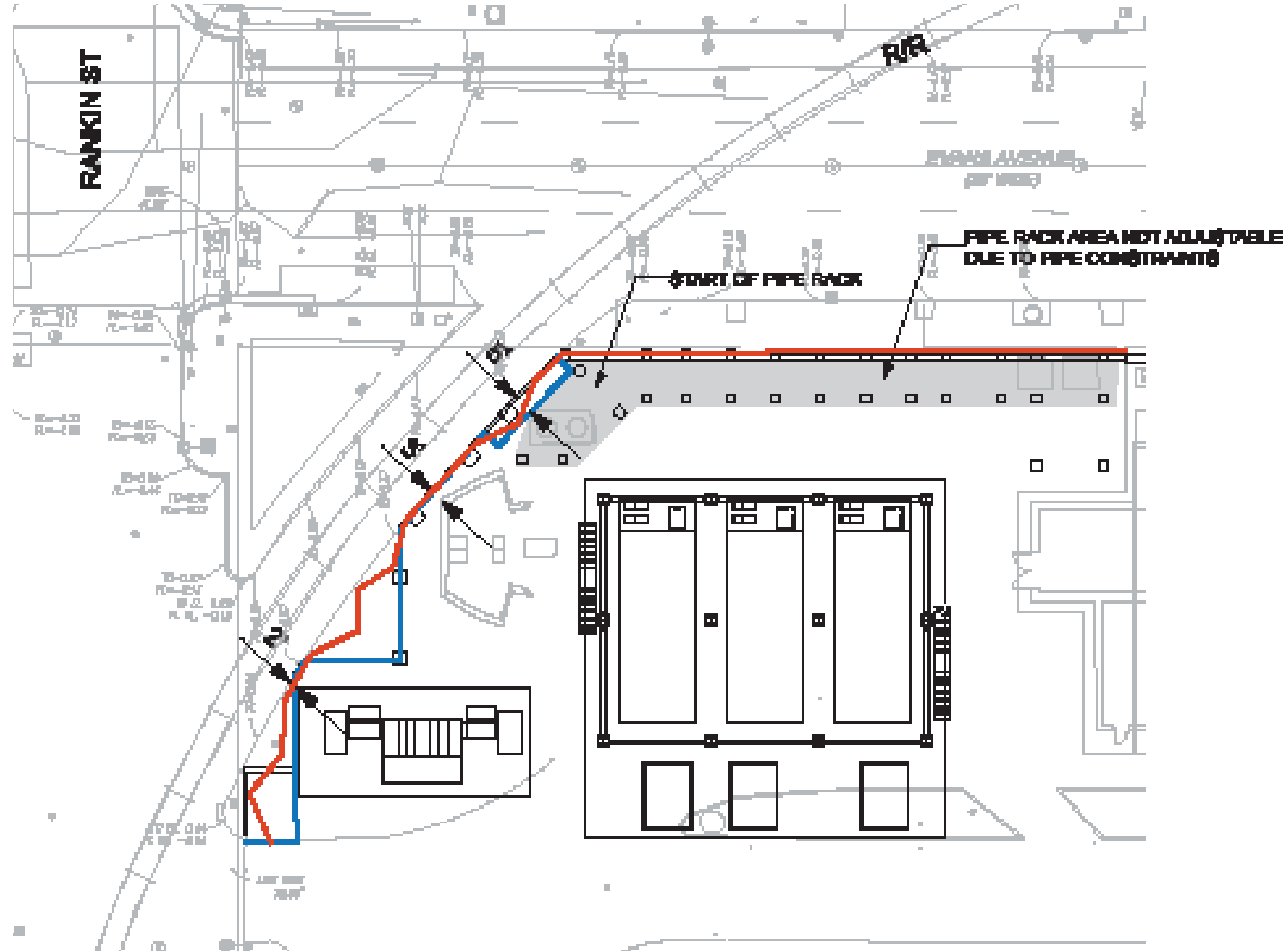
EVANS ALLEY
OFF 1000'

**PIPE RACK AREA NOT ADJUSTABLE
DUE TO PIPE CONSTRAINTS**

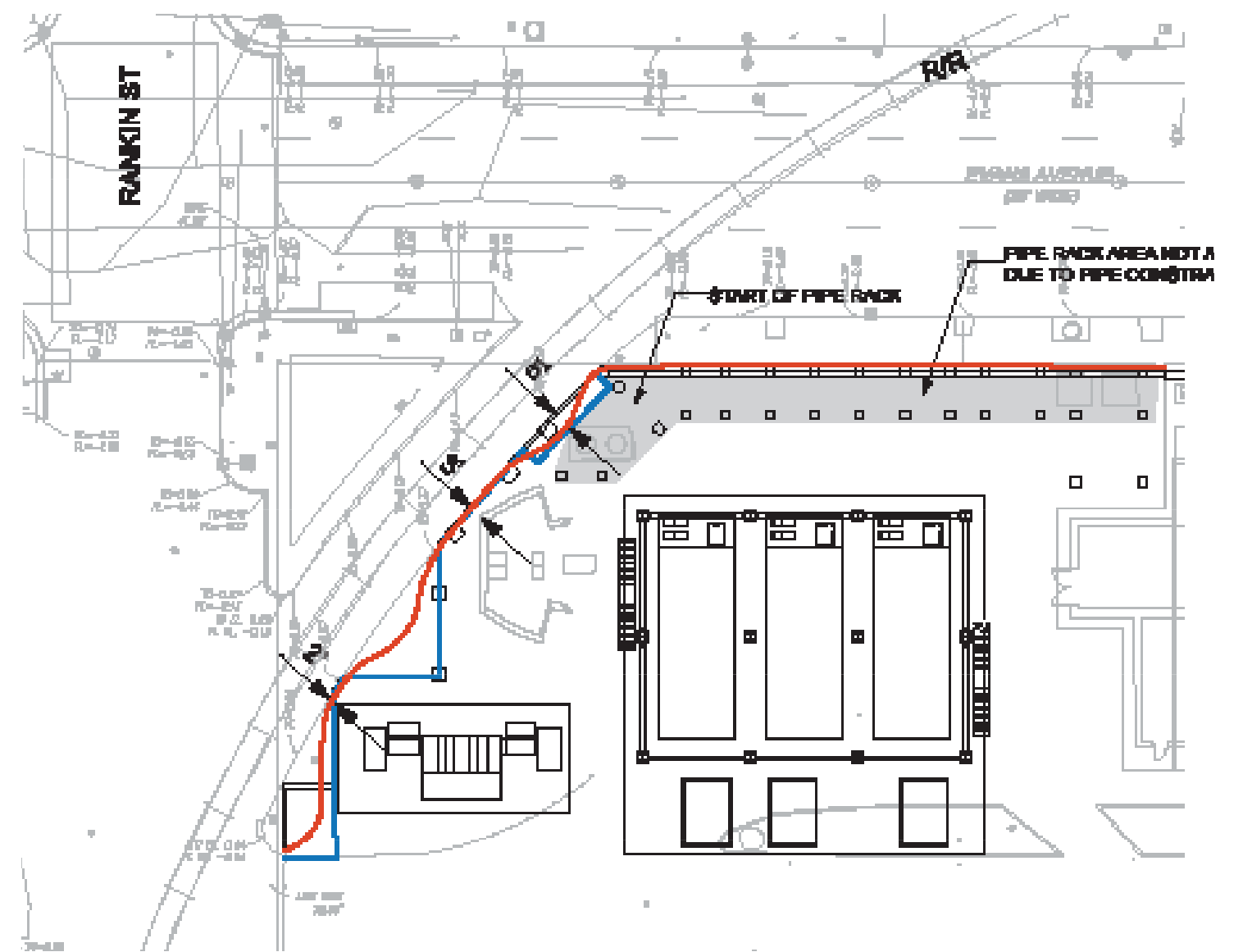
START OF PIPE RACK

Curved line indicates Railway Right of Way

Wall Configuration at Rankin/Evans Corner: Option 1: Simple Curve
(Blue line indicates limit needed for function/equipment)



FOLDED: REFERS TO A FOLDING SCREEN



WAVY: REFERS TO WATER/FLOW

Alternative configurations for wall section at Rankin to Evans corner

(Blue line indicates limits for function and equipment, plus note curve of railway right of way)







