

Staff Report

Date: March 15, 2017
To: Visual Arts Commissioners
From: Mary Chou, Project Manager
Re: SFO Hotel – Theme and Locations

At the February 2017 Visual Arts Committee meeting, Commissioners approved the project outline for the SFO Hotel. There are two updates to the project outline approved at the last meeting: (1) curatorial approach, and (2) location of suspended artwork on the fourth floor lobby.

(1) Curatorial approach

The curatorial approach for the selection of artwork will follow the principles guiding the design of the hotel, focusing on three specific attributes of the San Francisco Bay Area:

- Bay Area's natural landscape and landmarks
- Dramatic topography
- Unique neighborhood culture

These themes have been reviewed by the project team and are consistent with the approach used by the consultants for the two-dimensional artworks in the hotel rooms.

Motion: Motion to approve curatorial framework for selection of artworks for SFO Airport Hotel.

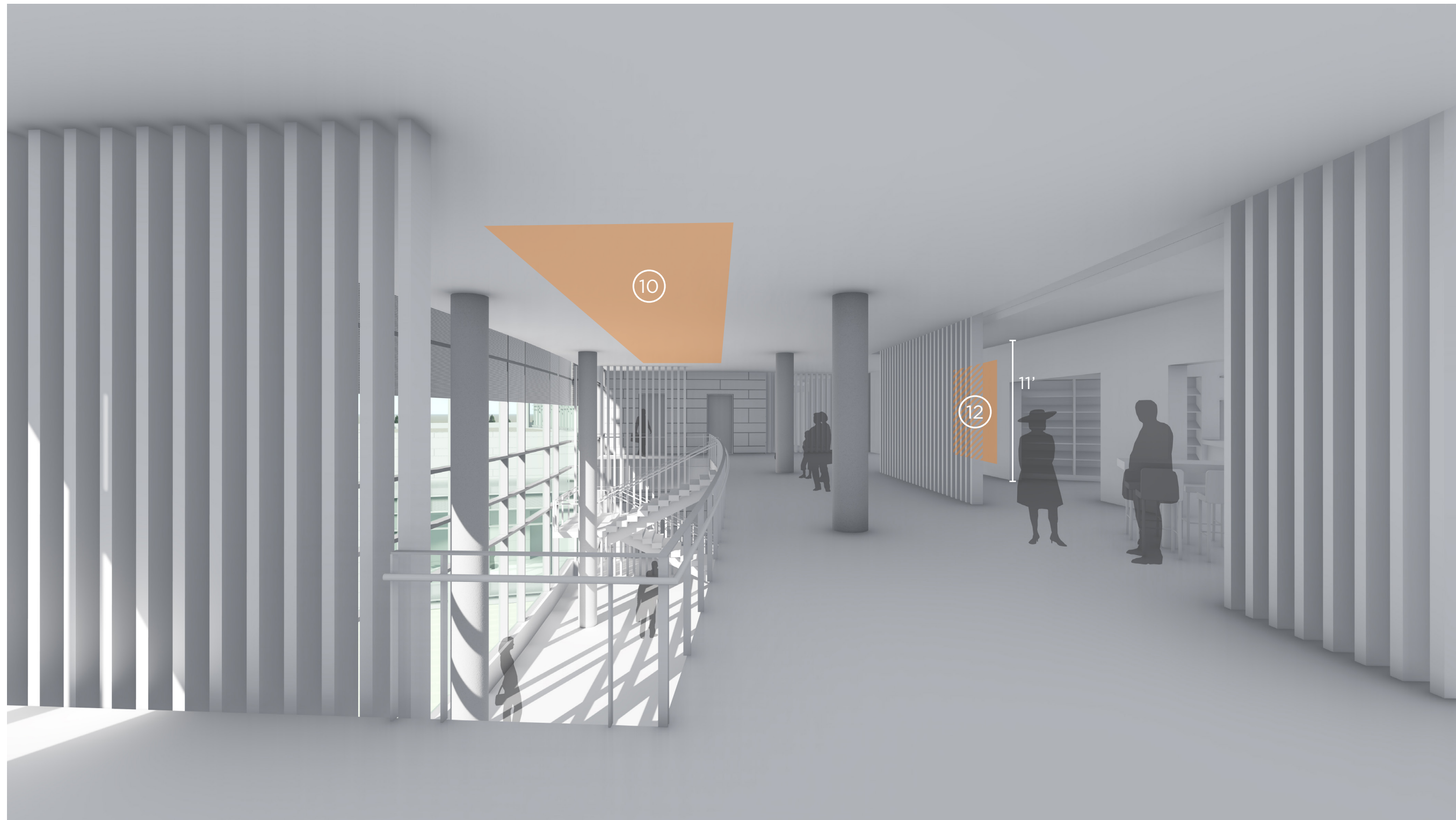
(2) Location of suspended artwork

The outline listed two possible locations for a suspended artwork in the fourth floor lobby – one in front of the check-in desks and one above the restaurant. At the last meeting, there was a preference for the location in front of the check-in desks. Upon further review of the two sites with the architects, SFAC staff prefer the location above the restaurant. This location offers more visibility in the hotel and more flexibility for the artists as there are no specific lighting requirements for the building at that location.

Level 4



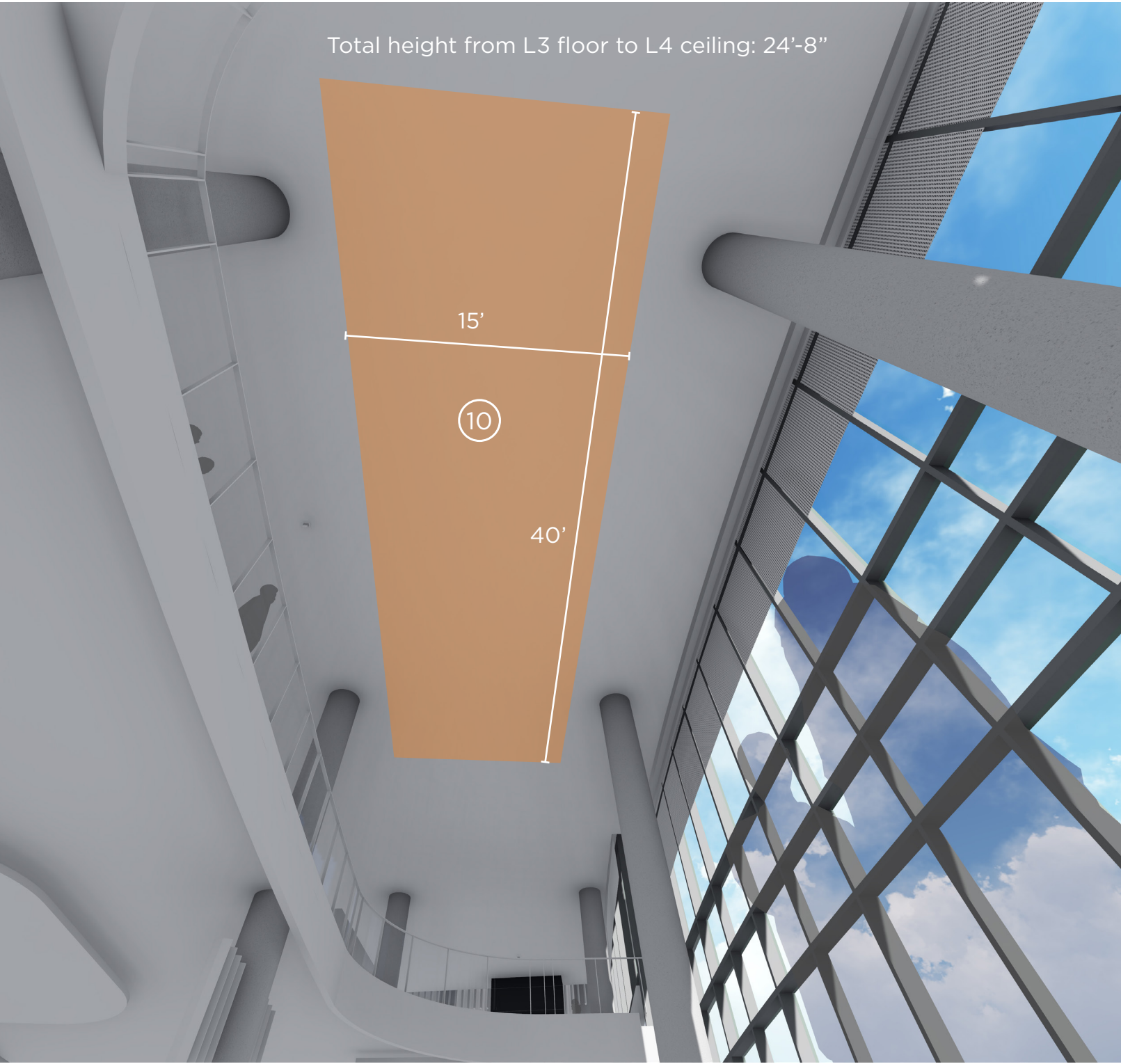
Level 4 lobby, views to restaurant and bar



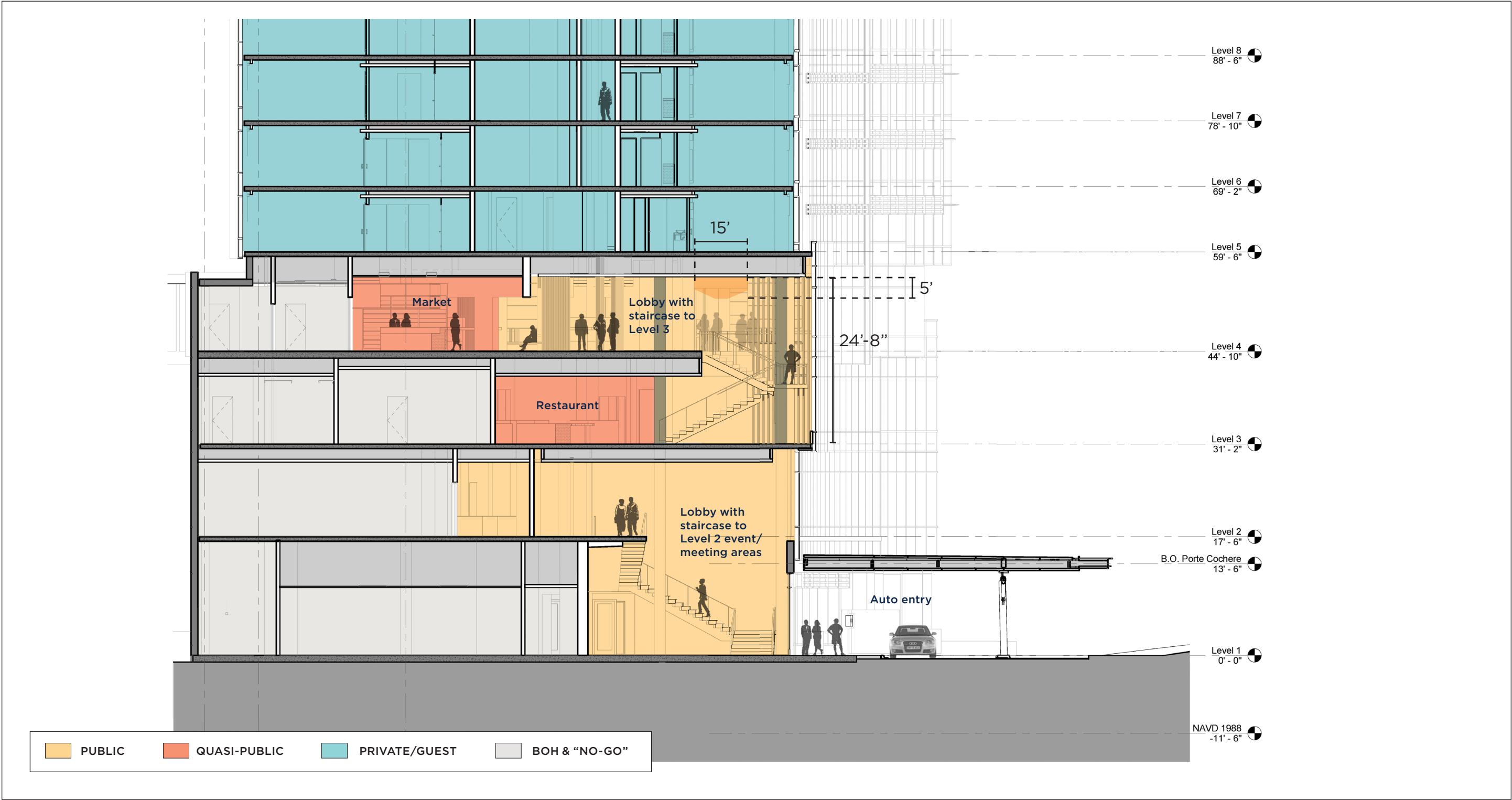
Level 3-4 (double-height) restaurant ceiling



Level 3-4 (double-height) restaurant ceiling



Section at ground-level entry



Restaurant furniture plan

