



SFO LONG TERM PARKING GARAGE 2 PUBLIC ART PROJECT OUTLINE

BACKGROUND

San Francisco International Airport is building a new long term parking garage adjacent to the current long term parking garage. It will be connected to both Long Term Parking Garage 1 and the new light rail station via pedestrian bridges at the 4th floor level.

ART OPPORTUNITIES

The primary art opportunity is the 3400 sq. ft. glass façade of the building that faces the elevator lobbies. Addressing this surface will be viewable by both people inside the structure using the elevators, and drivers approaching the garage. An additional related opportunity is the glass in the connector bridge between the Air Train station and the garage.

PROJECT GOAL

The artwork will provide a forthright identity for the LTPG. The artwork will share aesthetic continuity with the art glass project for the LTPG connector bridge and station.

PROJECT BUDGET

The total art enrichment allocation is \$2,294,069. The high-level budget breakdown is as follows:

- | | |
|-----------------------------|----------------|
| • Admin Fee | \$688,220.70 |
| • Selection Costs | \$22,000.00 |
| • Artist Contract Amount | \$1,000,000.00 |
| • Installation Allocation | \$279,559.00 |
| • Signage and Documentation | \$6,000.00 |
| • Contingency | \$68,882.00 |
| • Conservation | \$229,406.90 |

ARTIST RECRUITMENT APPROACH AND ELIGIBILITY

Arts Commission staff will select a short list of artists from the 2017/2018 Prequalified Artist Pool and the SFO T1 Redevelopment Prequalified Artist Pool.

ARTIST SELECTION PROCESS

The short list of qualified artists will be presented to the SFO Integrated Glass Artwork Artist Selection Panel consisting of two design professionals, one Arts Commissioner, two members of the SFO project team(s) and two arts professionals. The panel will identify three finalists who will be invited to develop conceptual site-specific proposals. These finalists will be paid an honorarium of \$5,000, exclusive of travel expenses, for development of a proposal.

The SFO Integrated Glass Artwork Artist Selection Panel will reconvene to consider the finalists' proposals in an interview format and will select one artist and an alternate for the project for recommendation to the Arts Commission.

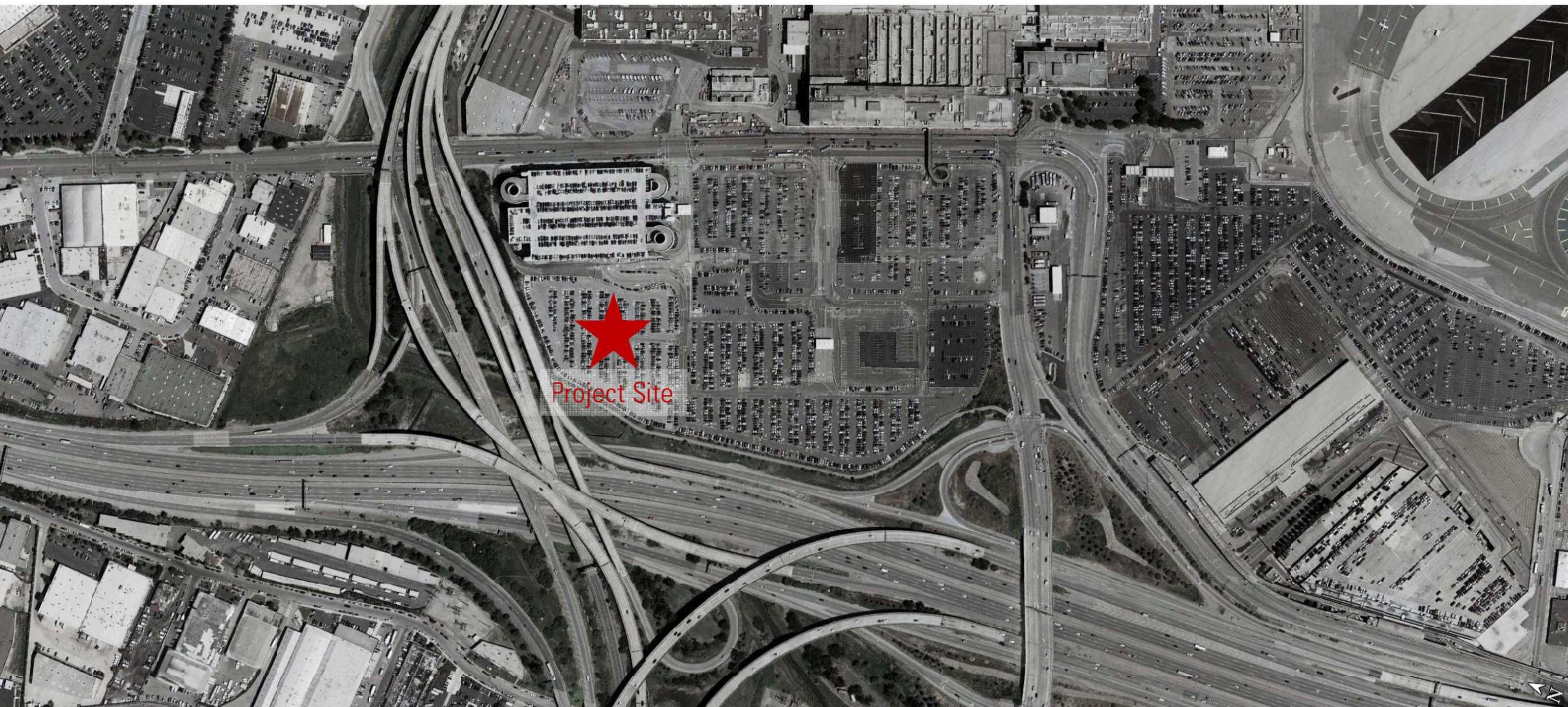
This selection panel will be combined with the SFO AirTrain Extension Project and the SFO IT REACH opportunity.

SCHEDULE:

Selection Panel 1st meeting	April 2016
Selection Panel 2 nd meeting	June 2017
Approval of selected artists by VAC	July 2017
Approval of selected artists by Full Commission	August 2017
Artists under contract	November 2017

FURTHER INFORMATION

Contact Justine Topfer, Public Art Project Manager at (415)252-2228 or by email at Justine.topfer@sfgov.org.



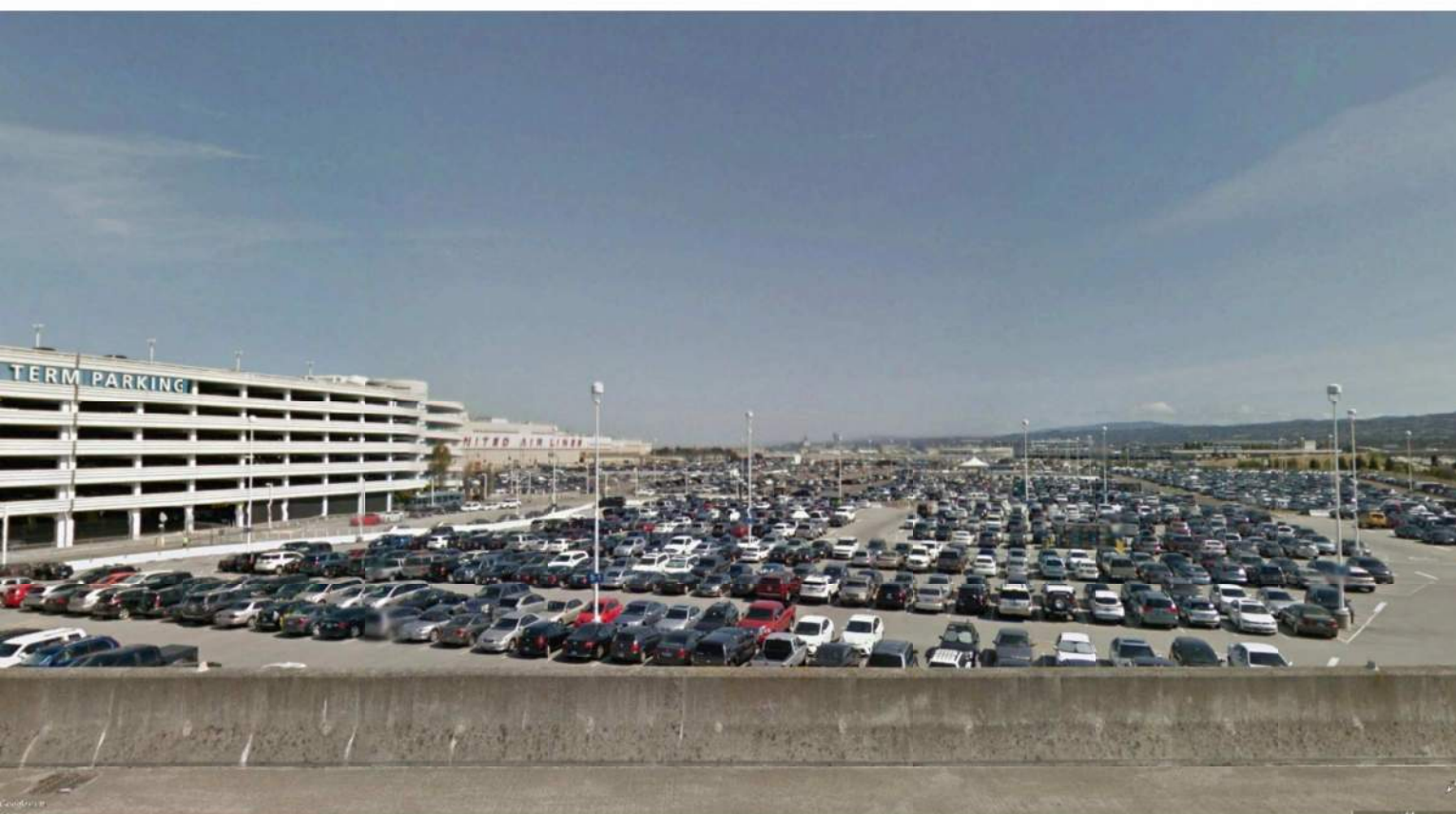
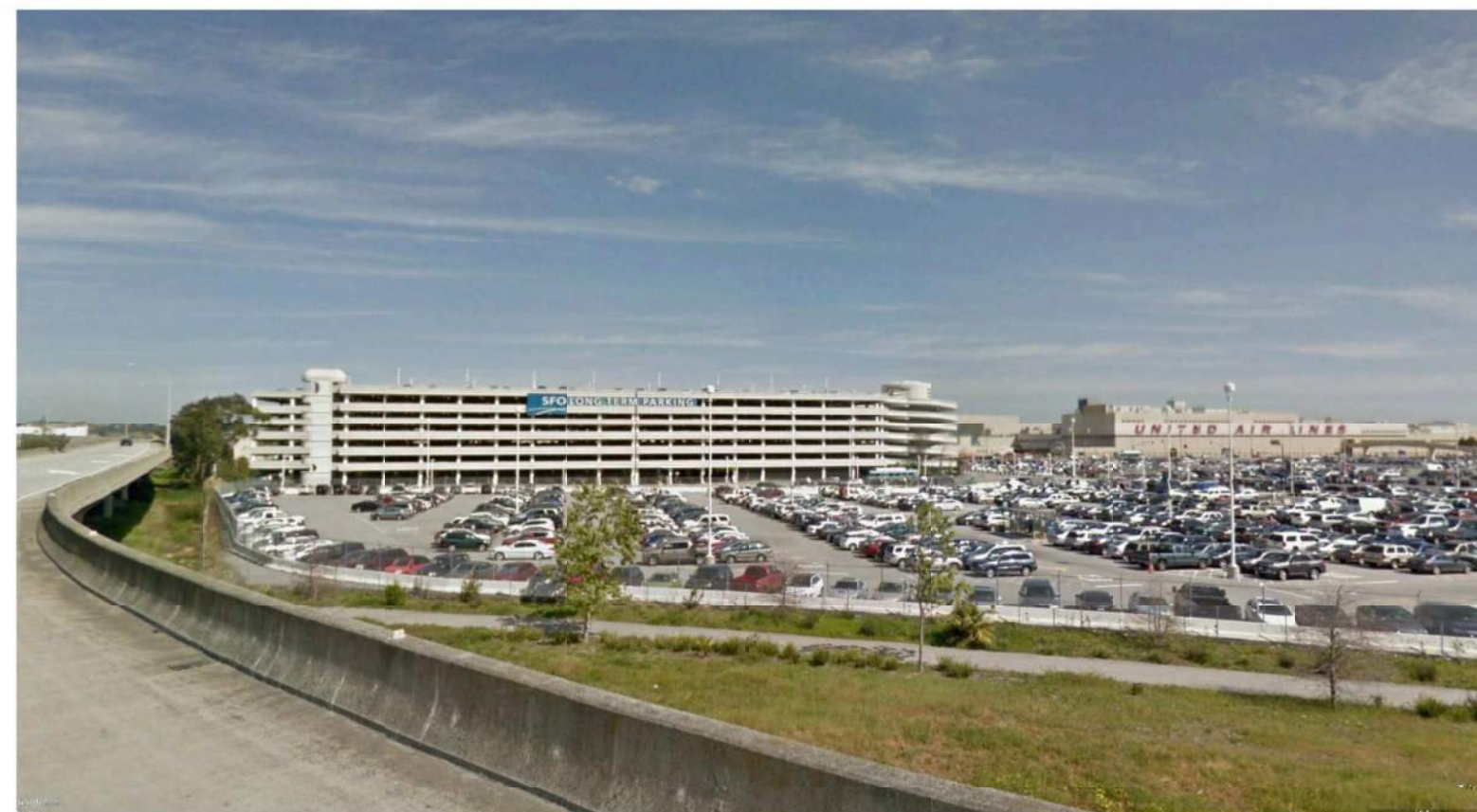
SFO LONG TERM PARKING GARAGE 2
CIVIC DESIGN REVIEW PRESENTATION

DECEMBER 12, 2016



NIBBI-KH/FMG

Site Photographs



Existing and Proposed



From San Francisco



From San Mateo



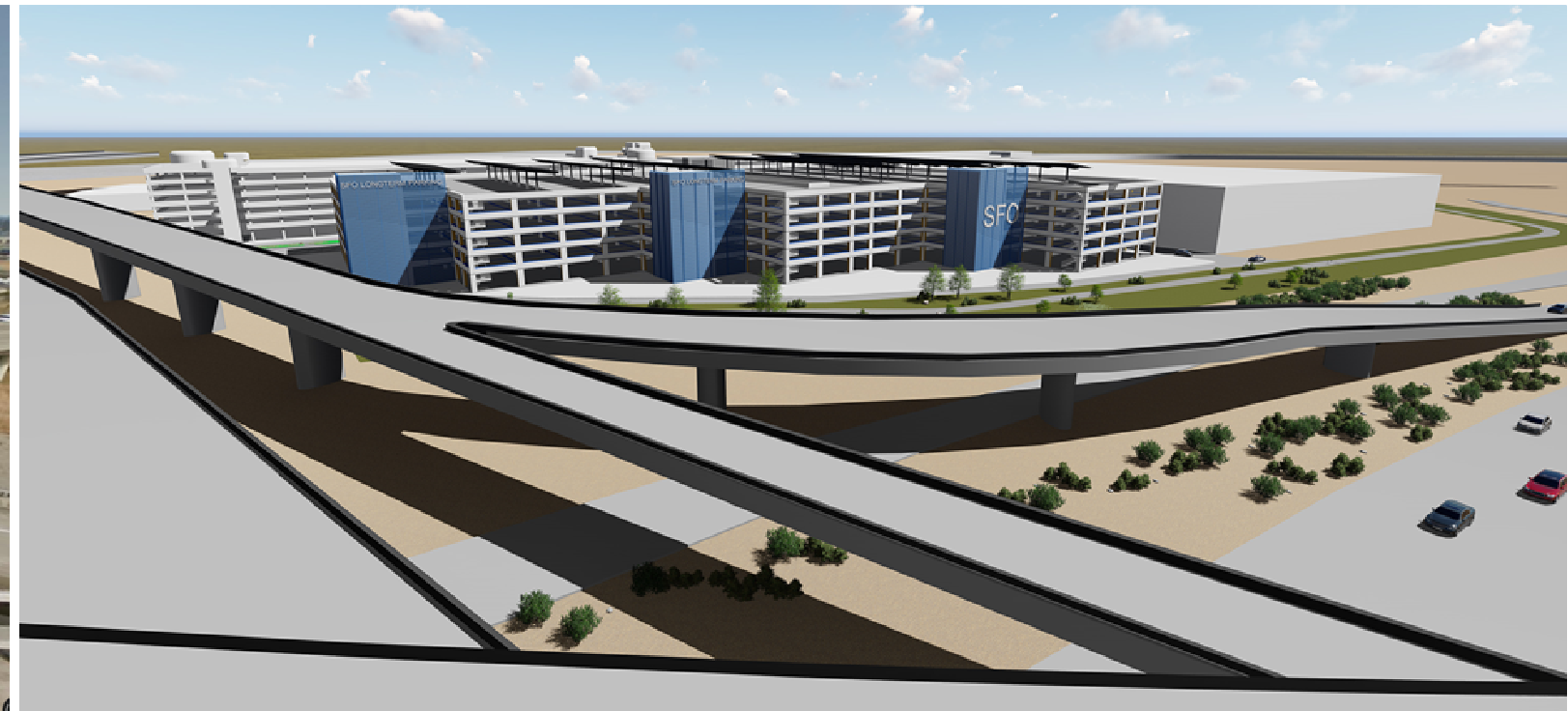
Existing and Proposed



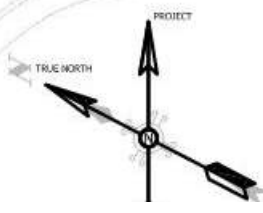
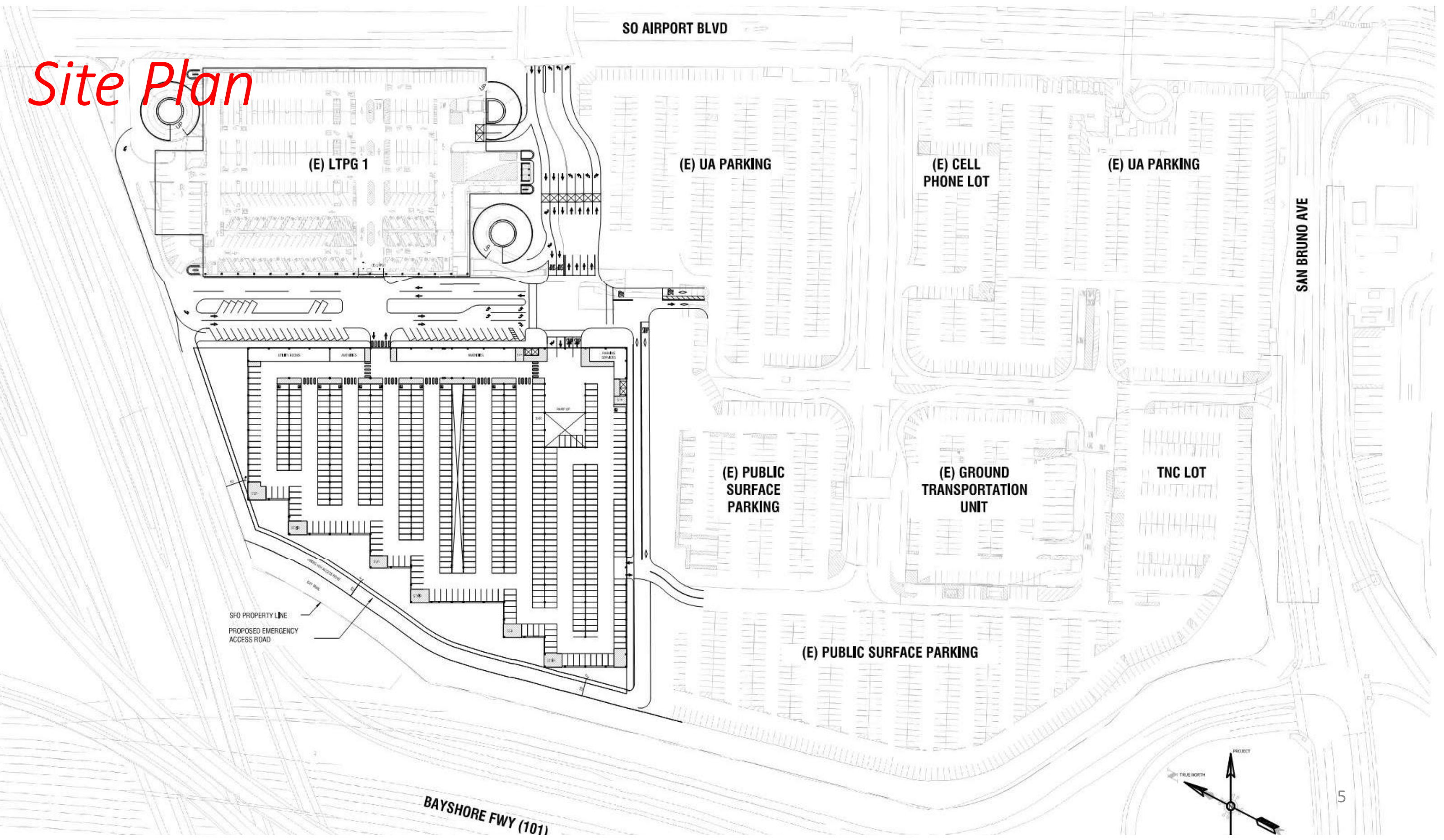
From under the overpass



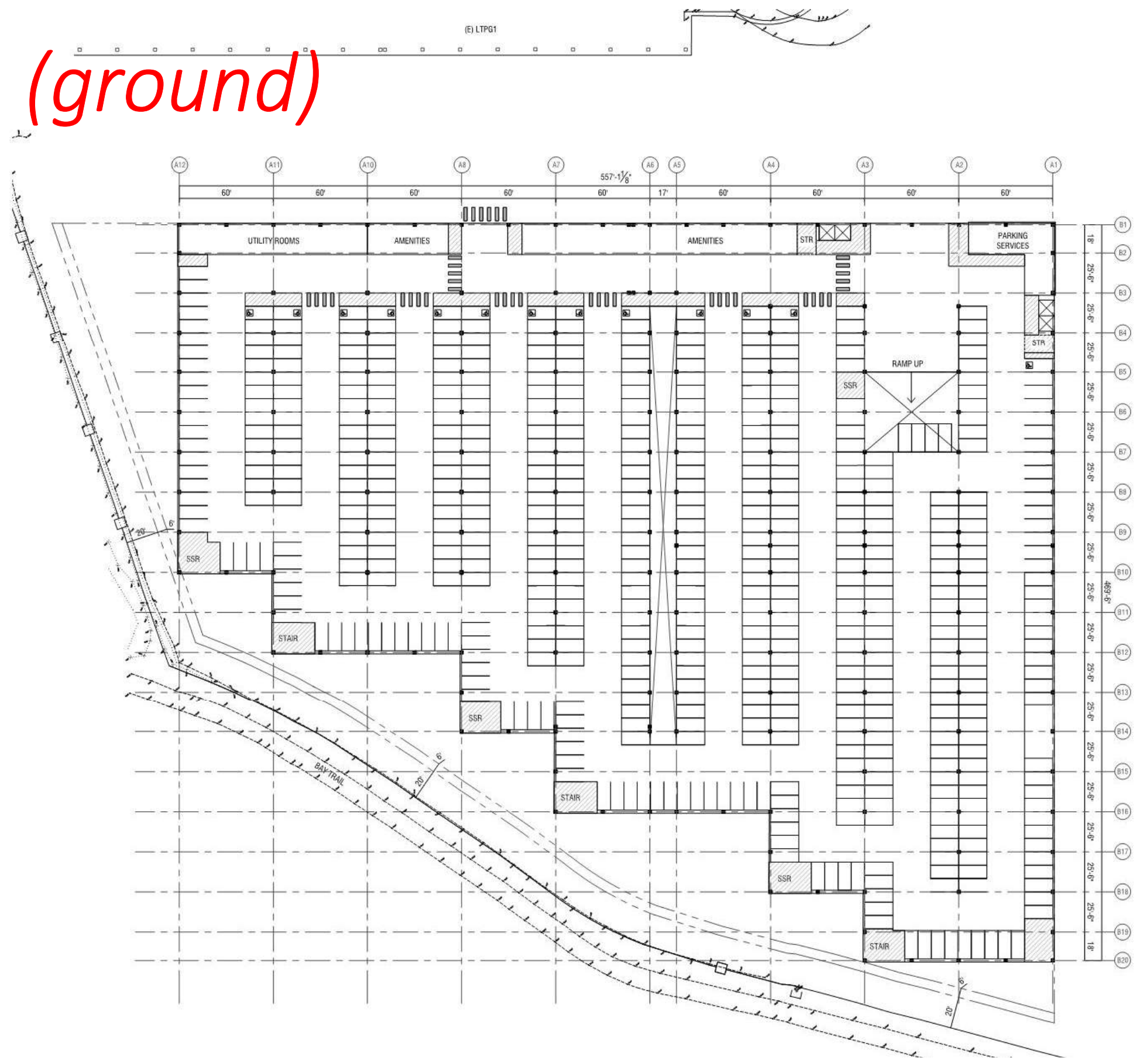
From top of the overpass



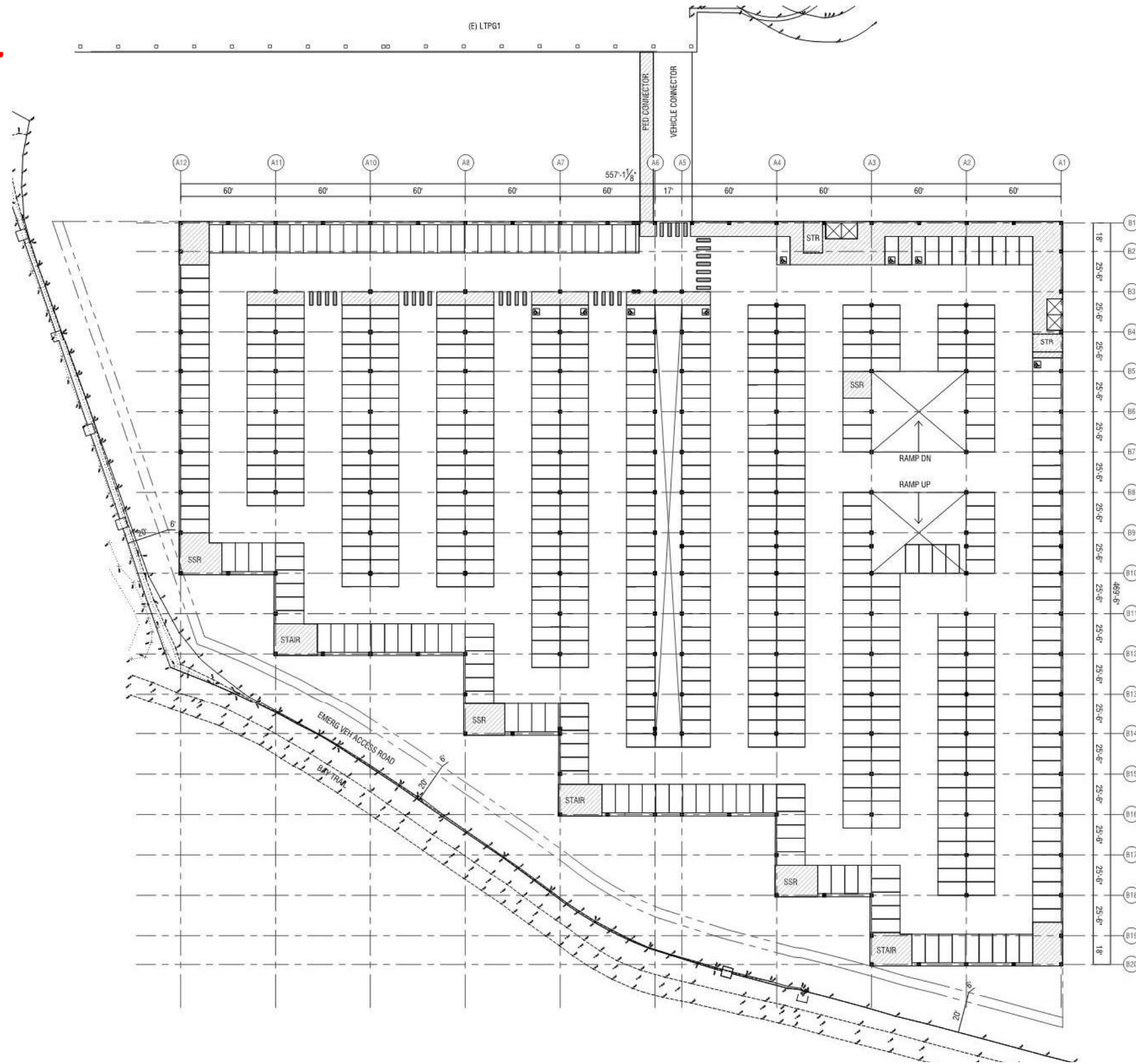
Site Plan



Level 1 (ground)



Level 5



Project Overview



West Side – Bird's Eye View



West Side – Off-ramp View



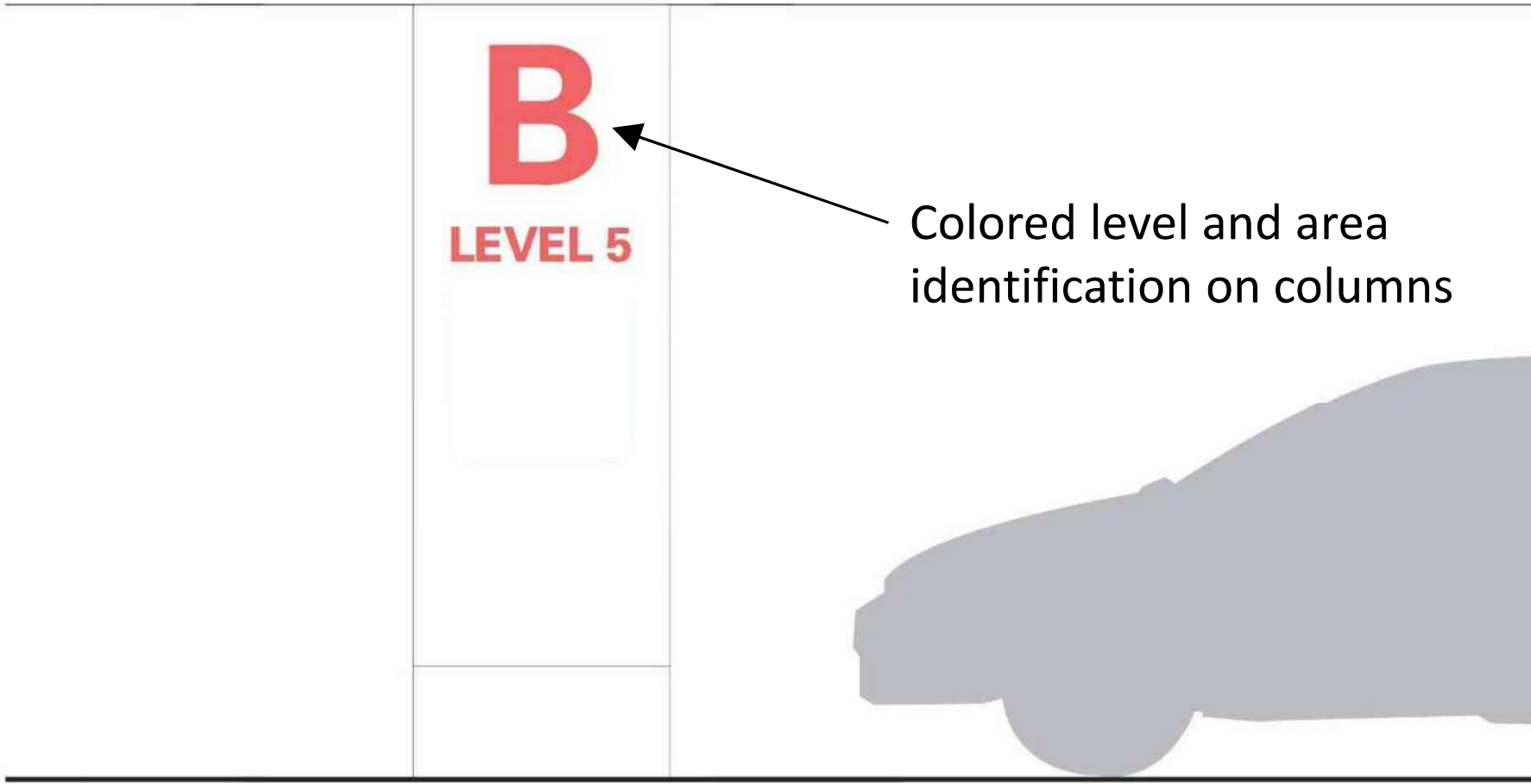
Southeast Corner View



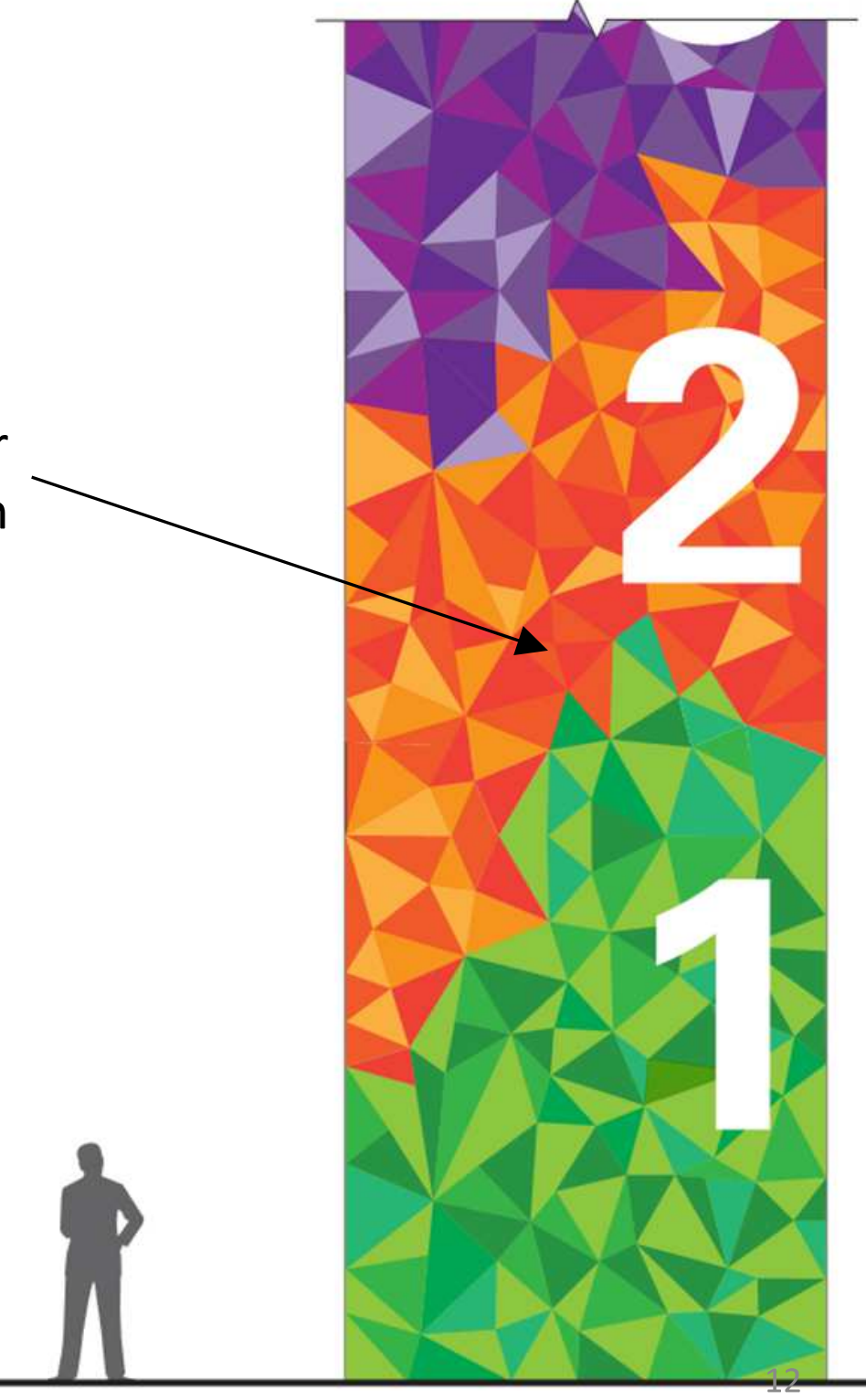
Interior Floor Identification



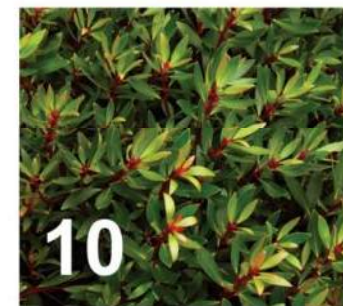
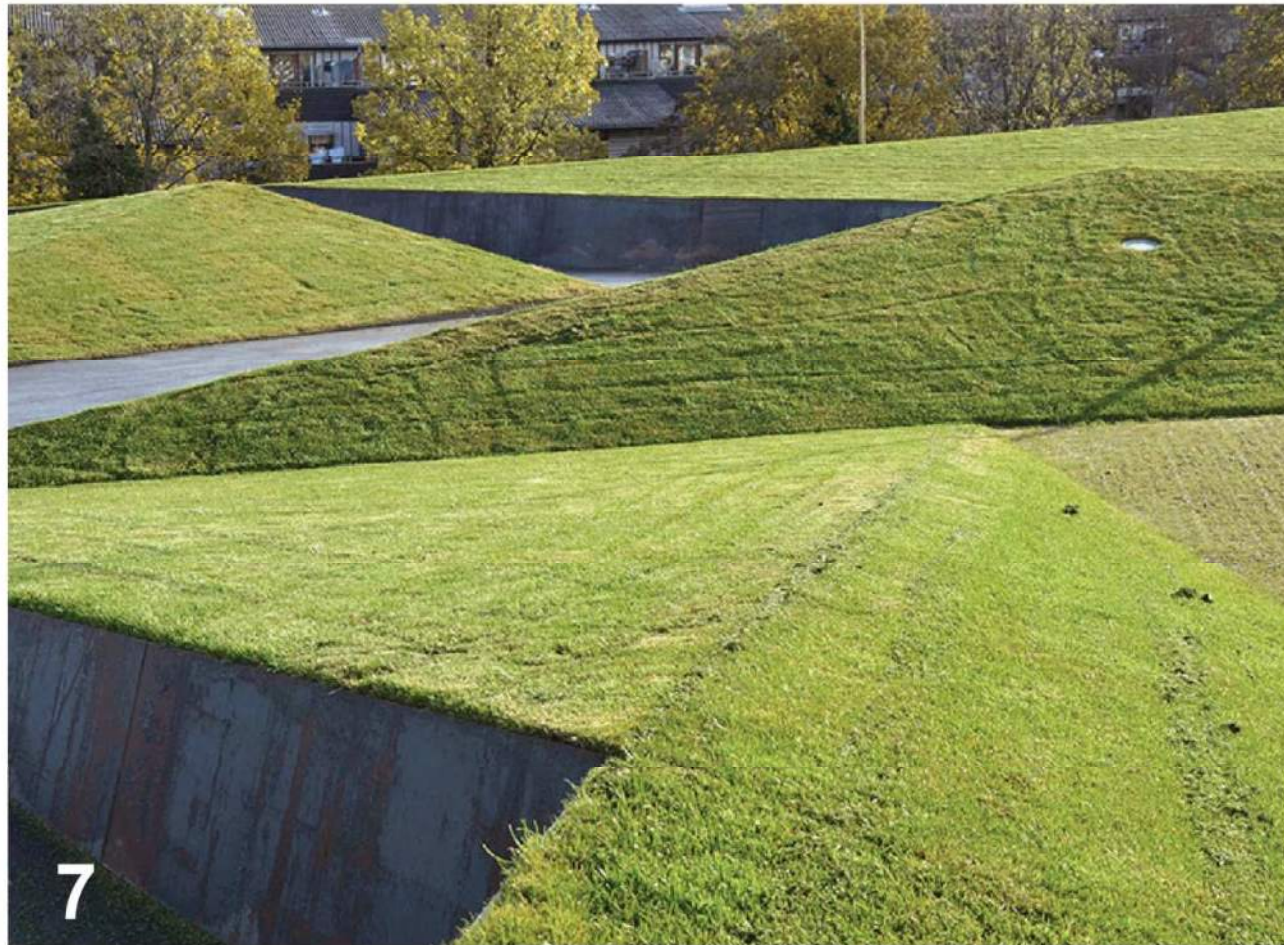
Graphic accent using level color scheme at vertical circulation



Colored level and area identification on columns



Planting



1. LANDSCAPE STONE BERMS + LARGE SHRUBS
 2. GROUNDCOVER: AGAVE ATTENUATA
 3. GROUNDCOVER: ACACIA COGNATA 'LIMELIGHT'

4. SHRUB: LEUCADENDRON SALIGNUM
 5. LANDSCAPE: CEANOTHUS 'RAY HARTMAN'
 6. LANDSCAPE HARDENING: STONE MULCH, BLACK SLATE
 7. LANDSCAPE BERMS

8. SHRUB: LEPTOSPERMUM CORDIFOLIUM
 9. SHRUB: LEUCADENDRON 'POM POM'
 10. SHRUB: DRYMIS LANCEOLATA

Planting



1. XERISCAPE: BLUE AGAVE GROUPING

2. GROUNDCOVER: AGAVE BLUE GLOW

3. GROUNDCOVER: SENECIO M. 'BLUE CHALK'

4. BLUE MISSION BUTTERFLY

5. LANDSCAPE: GRASSES + FLOWERING
PLANT FOR OCCASIONAL BLUE BUTTERFLY

6. LANDSCAPE HARDENING: STONE MULCH,
BLACK SLATE

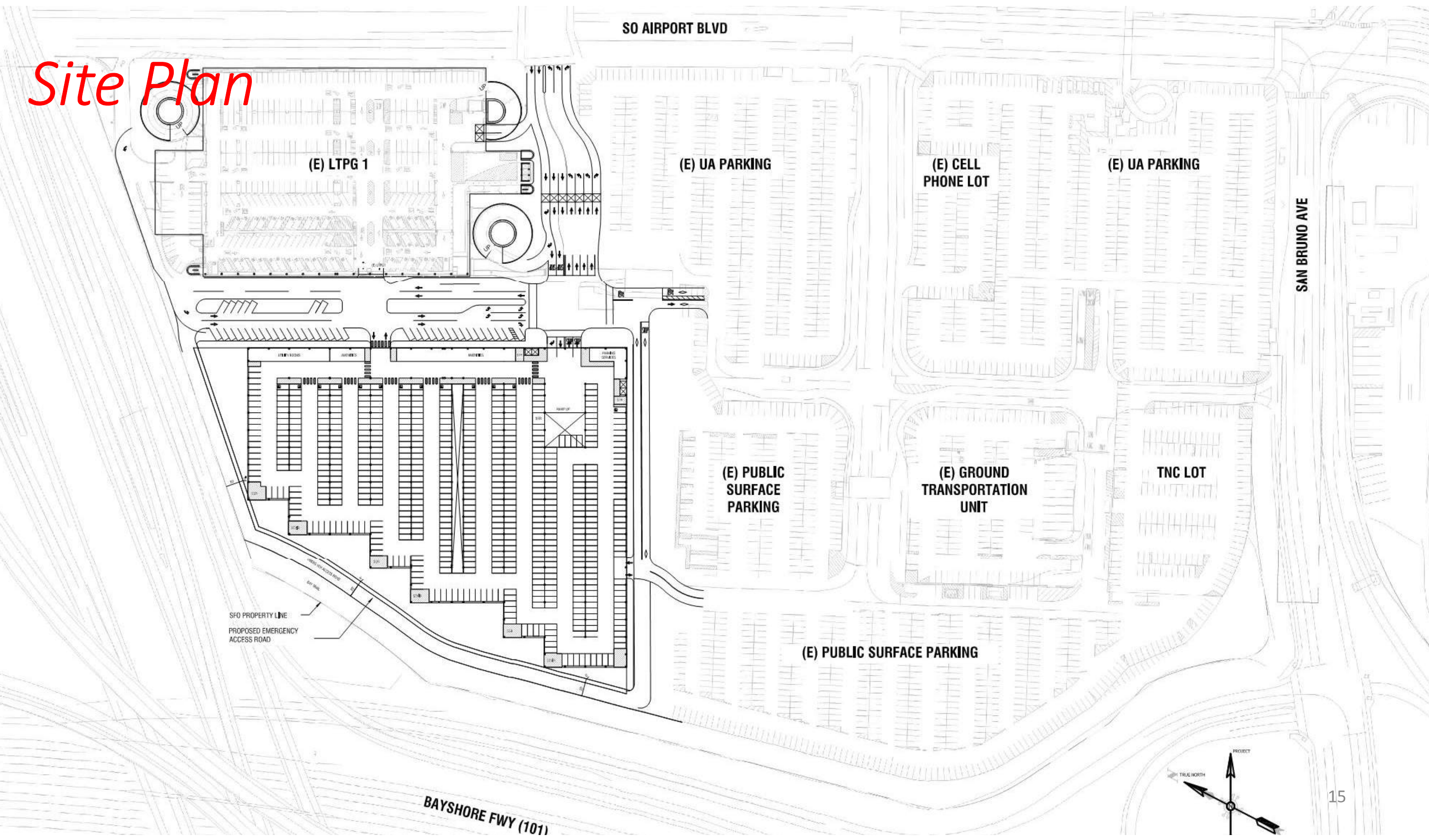
7. LANDSCAPE BERMS WITH STONE

8. BAY CHECKERSPOT BUTTERFLY

9. SUCCULENT: DYCKIA ARIZONA

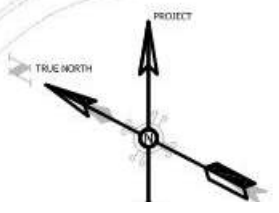
10. GRASS: CAREX OR OTHER ORANGE
LEAF OR FLOWER PLANT

Site Plan

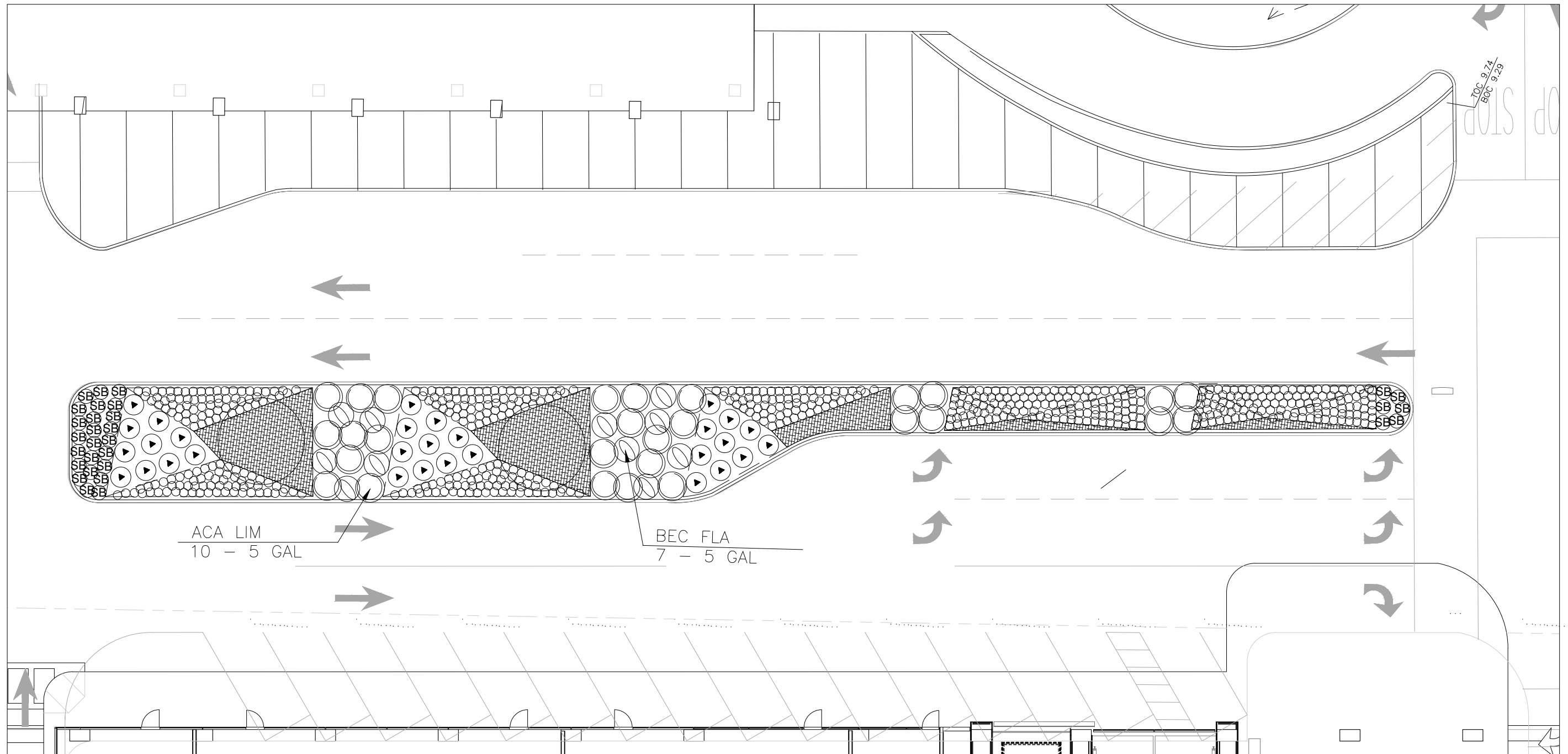


SFO PROPERTY LINE
PROPOSED EMERGENCY
ACCESS ROAD

BAYSHORE FWY (101)



Boulevard Landscape



Thank You!



1 NIBBI-KH/FMG