



**SOUTHEAST HEALTH CENTER ARTIST SELECTION
MEETING 2 SUMMARY**

MEETING DATE

November 16, 2018

VOTING SELECTION PANELISTS

*Joe Chin, Project Manager, Department of Public Works

Erica Deeman, Artist

Jacqueline Francis, Chair of Visual and Critical Studies, CCA

Karen Goodson Pierce, Community Representative, Department of Public Health

Oscar James, Southeast Health Center Advisory Community

Barbara Sklar, Arts Commissioner

*Lisa Zayas-Chien, Project Manager, Department of Public Works

Konstantin Zlatev, Architectural Designer, Department of Public Works

*non-voting panelist

PROCESS

The following artists presented an overview of their practice and proposals for the Southeast Health Center Artist Selection Panel:

Main Lobby

Kirk Crippens

Frederick Hayes

Ramekon O'Arwisters

Glass Partition

Bob Armstrong

Ron Saunders

The panelists were asked to discuss and evaluate each of the proposals on the following criteria:

- Aesthetic quality
- Appropriateness of the proposed artwork for the site and project goals
- Demonstrated feasibility of the preliminary proposal and the proposal budget
- Demonstrated maintainability and durability of the artwork's design, materials, fabrication and installation methods

The panelist then ranked the artists 1, 2, or 3 (1 = highest rank) accordingly.

MAIN LOBBY RESULTS

Kirk Crippens 16

Frederick Hayes 12

Ramekon O'Arwisters 8

GLASS PARTITION RESULTS

Bob Armstrong 11

Ronald M Saunders 7

ARTS COMMISSION APPROVAL

Motion: Motion to approve the selected artist, Ramekon O'Arwisters, for the Southeast Health Center Expansion (SEHC), Entry Lobby Wall, a project for the Department of Public Health, as recommended by the SEHC artist selection panel.

Motion: Motion to authorize the Director of Cultural Affairs to enter into contracts with the selected artist, Ramekon O'Arwisters, for an amount not to exceed \$112,350 for design, engineering, fabrication, transportation and installation consultation of artwork for the entry wall of the Southeast Health Center Expansion project

Motion: Motion to approve the selected artist, Ronald M Saunders, for the Southeast Health Center Expansion (SEHC), 2nd Story Glass Partitions, a project for the Department of Public Health, as recommended by the SEHC artist selection panel.

Motion: Motion to authorize the Director of Cultural Affairs to enter into contracts with the selected artist, Ronald M Saunders, for an amount not to exceed \$80,000 for design, engineering, fabrication, transportation and installation consultation of artwork for the 2nd Story Glass Partitions of the Southeast Health Center Expansion project.

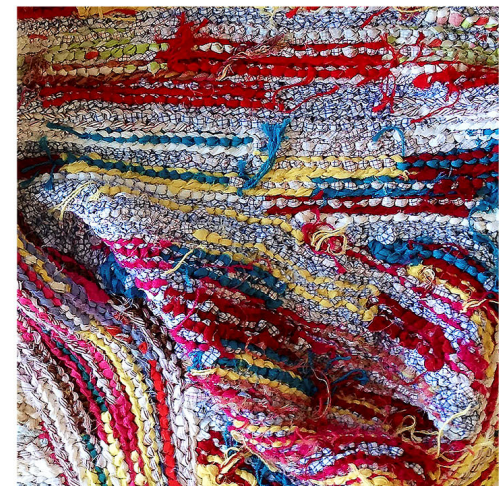
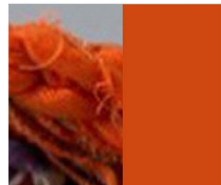
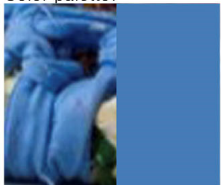
Ramekon O'Arwisters: Art Proposal for the Southeast Health Center Expansion Project



Above: Large sculpture with figure for scale
Below: Detail of texture

Woven Calmness consists a 23 feet by 9 feet crocheted fabric tapestry, specifically designed for the main lobby area at the Southeast Health Center Expansion. I incorporate different hand-weaving techniques—braiding, quilting, sewing, and crocheting strips of fabric—to create a three-dimensional woven tapestry. I have specifically designed large, one-of-a-kind, re-purposed Berkeley redwood crochet hooks to weave the tapestries. **Woven Calmness** is based on the premier African-American tradition of using improvisation and contrasting colors as the primary structure for creativity and design. Each tapestry represents the role of folk-art weaving and fabric traditions within the African-American community and their imbued powers to heal, support, and unite in times of adversity. Each tapestry will be attached on a wooden panel, mounted on the wall with metal cleats, protected by plexiglass and inset into the wall.

Color palette:

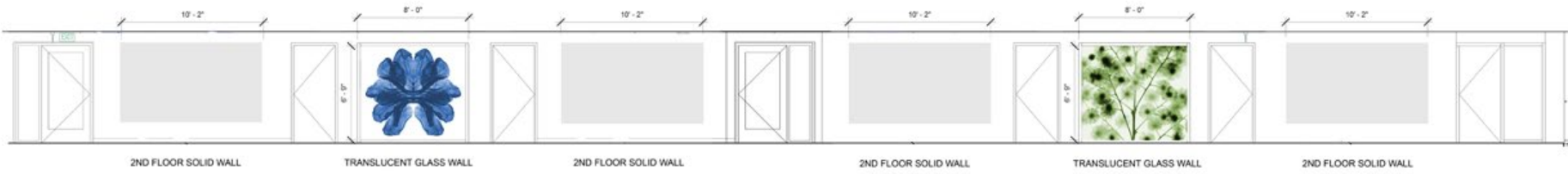
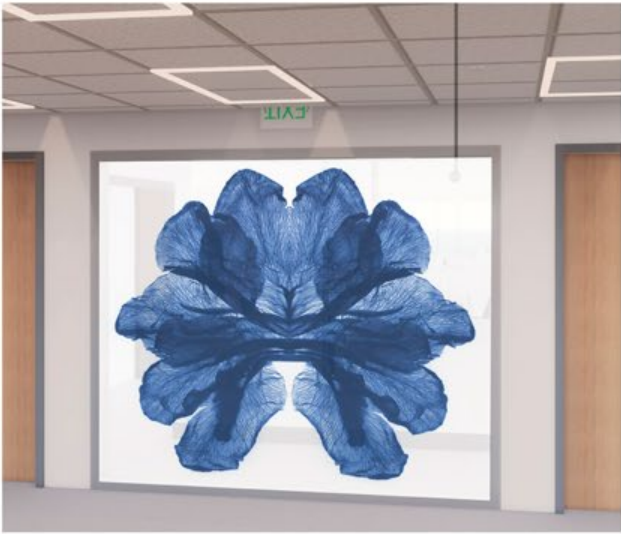






Art Proposal for The Southeast Health Center Expansion

Ron M. Saunders



MEDICINAL PLANTS



ECHINACEA DODONEA ACACIA SALVIA GLADIOLA PINCUSHION

The photogram images of medicinal plants created for this proposal seek to provide a comfortable, welcoming and inspirational environment for visitors and staff in the Southeast Health Clinic expansion building. At first, the viewers will delight in the beauty of the images themselves. As their curiosity is engaged by the uniqueness of the photogram image, they may come closer to read the short description provided. This will remind them that nature is healing in its beautiful and pragmatic qualities. As examples, the green African Acacia shown on one of the panels is traditionally used for bleeding, bronchitis and upper respiratory infections, and Gladiola which is native to Africa, is used for a variety of ailments such as, constipation, colds, hemorrhoids and epilepsy.

The Bayview is one of the best places to grow plants due to it's sunny and temperate climate. For many years the African American community of Bayview Hunters Point did not have adequate access for healthcare for low income residents of the area. The Southeast Health Center opened in 1979 to provide affordable healthcare to people of all ages in the Bayview area. This artwork will create space for dialogue about the community's past and present history.

The photographic images are created employing the photogram process. Photograms are photographs made without the use of a camera. This 19th century photographic process has an immediacy, and rawness and truth that are more primal than images created with a camera.

I place plant material on the surface of silver-based photographic paper, and then the paper is exposed to light emitted from an enlarger to create a shadowy silhouette image. The unique images are scanned and colored using Photoshop to create digital cyanotypes.

The photograms will be reproduced on film interlayer material and sandwiched between plates of glass or direct print to glass. The artwork will allow light to penetrate into the staff area behind the glass. The amount of light transmitted into the staff area can be adjusted by screening the opacity of the film.

I enjoy a multifaceted role in this project as artist, lead designer and creator of all art images, as well as project coordinator between subcontractors. The subcontractor I will be working with are: Light Source Imaging, San Francisco, CA and Pulp Studio in Los Angeles, CA. The timeline for this project will correspond with the construction schedule of the Southeast Health Center Expansion.





