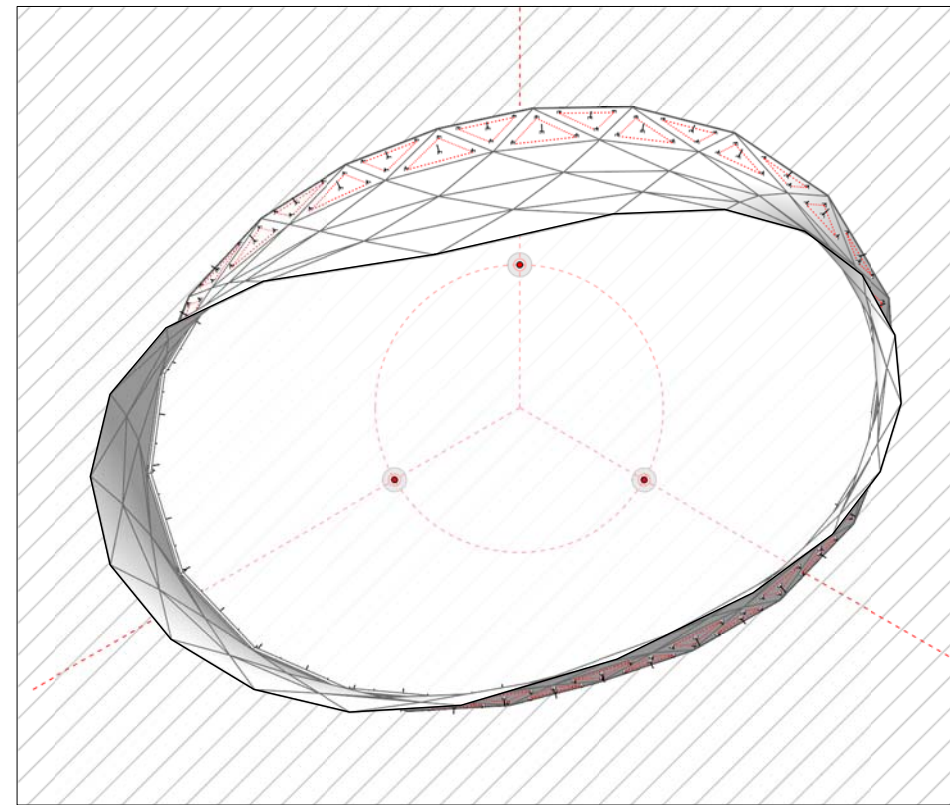
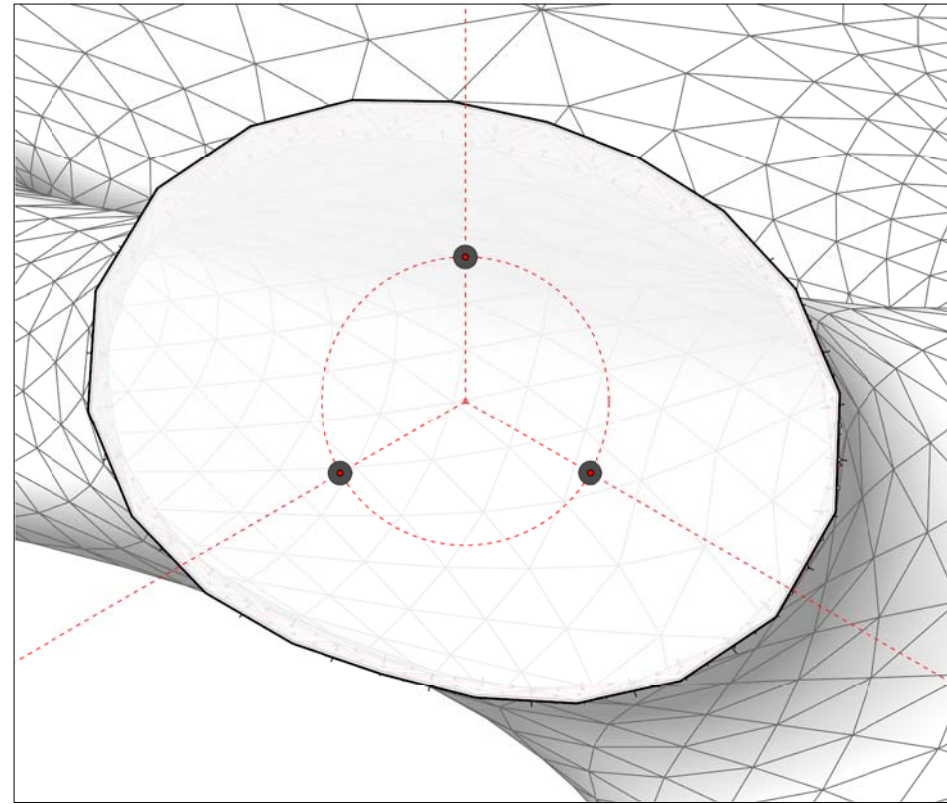
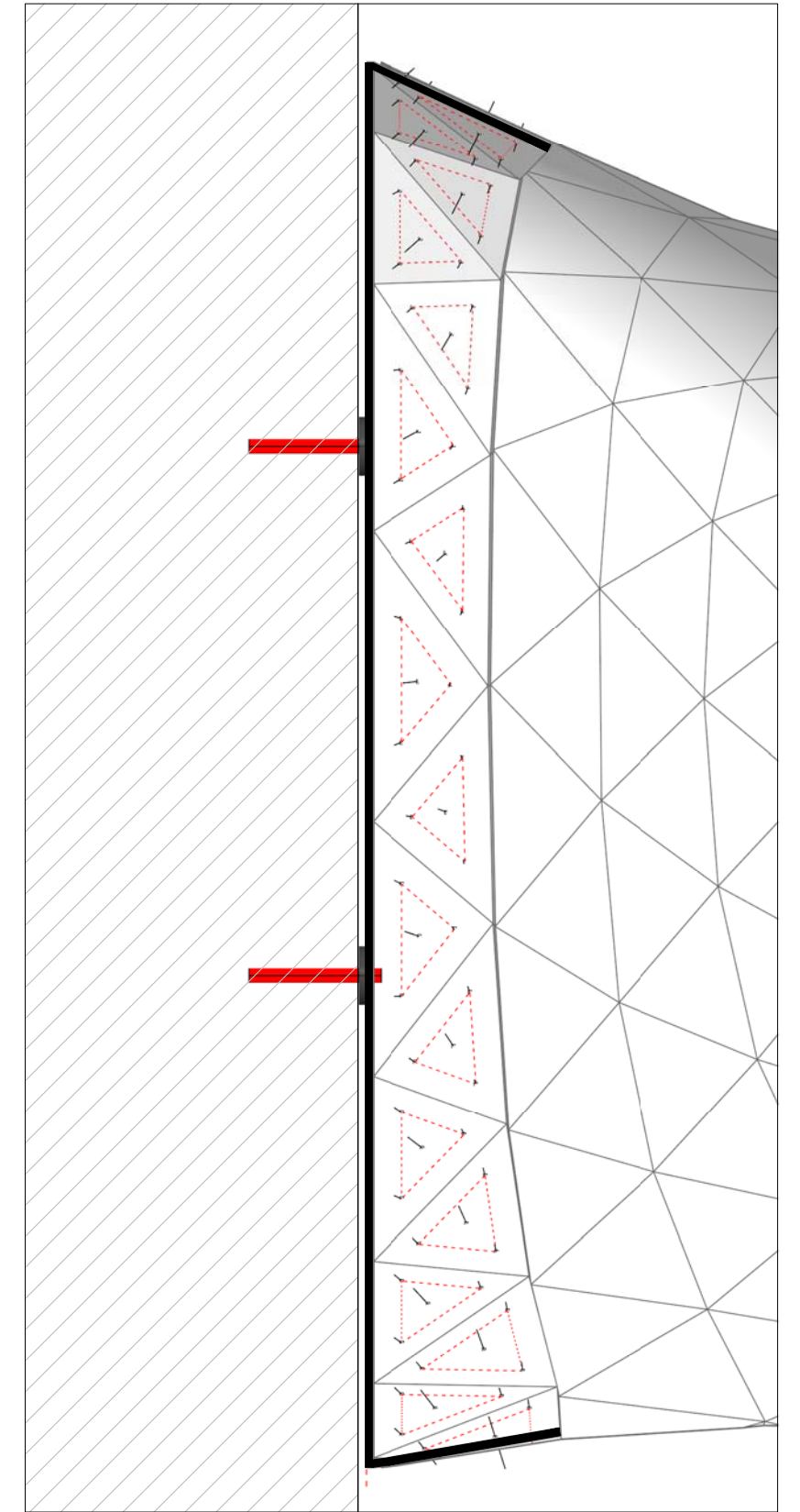


A-101.1 - ANCHOR DETAIL / ISOMETRIC PROJECTION



A-101.2 - 101.3 - ANCHOR DETAIL / ELEVATIONS



A-101.4 - ANCHOR DETAIL / SECTION

4" = 1'0"

ISSUE DATE: 25 JULY 2018

1.5" = 1' 0"

DOCUMENT:

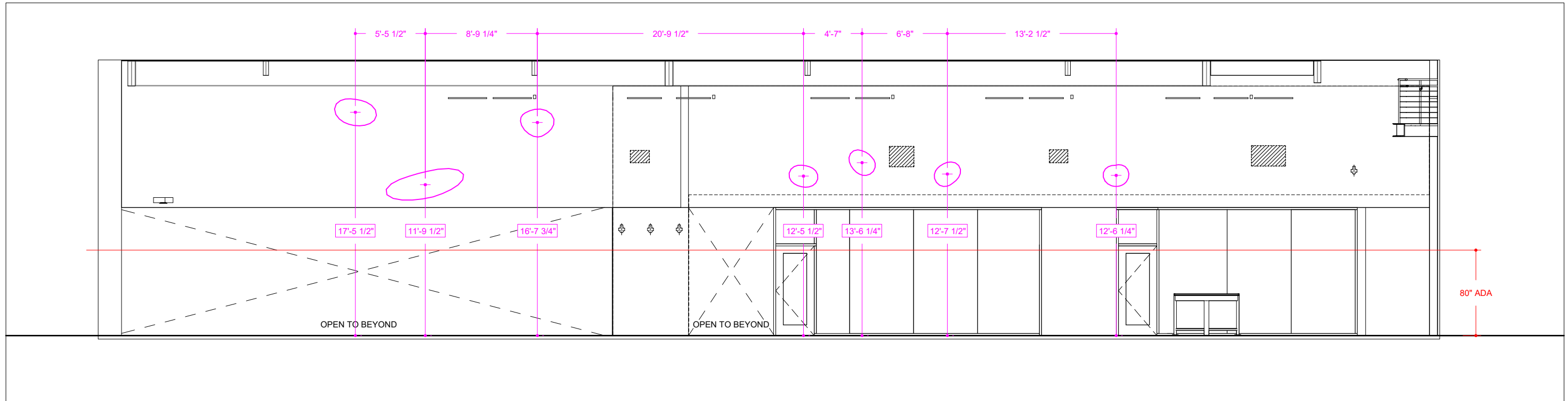
A-101

**SFO - CONSOLIDATED
ADMINISTRATION CAMPUS LOBBY**
San Francisco, California

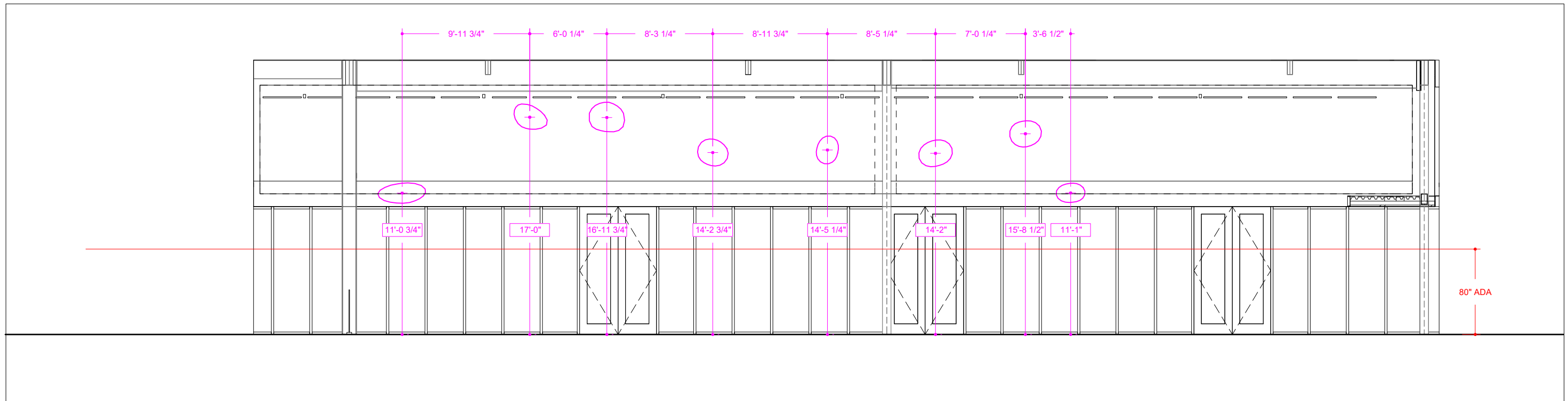
THEVERYMANY, LLC
MARC FORNES ©2018
www.theverymany.com
New York

TYPICAL WALL ANCHOR DETAIL

Additional Notes: DRAWING DETAILS ANCHOR DESIGN WITH PROFILE CUT
1/8" GALV. STEEL ANCHOR PLATE WELDED TO INTERFACING RING.



A-100.1 - LOBBY NORTH ELEVATION



A-100.2 - LOBBY SOUTH ELEVATION

ISSUE DATE: 25 JULY 2018

1/8" = 1' 0"

DOCUMENT:

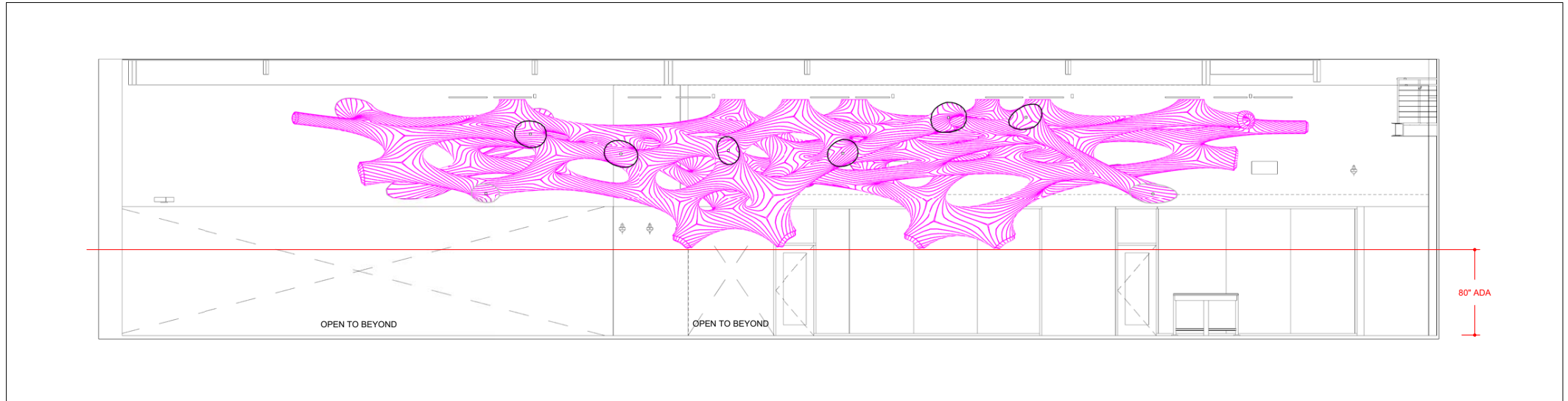
A-100

**SFO - CONSOLIDATED
ADMINISTRATION CAMPUS LOBBY**
San Francisco, California

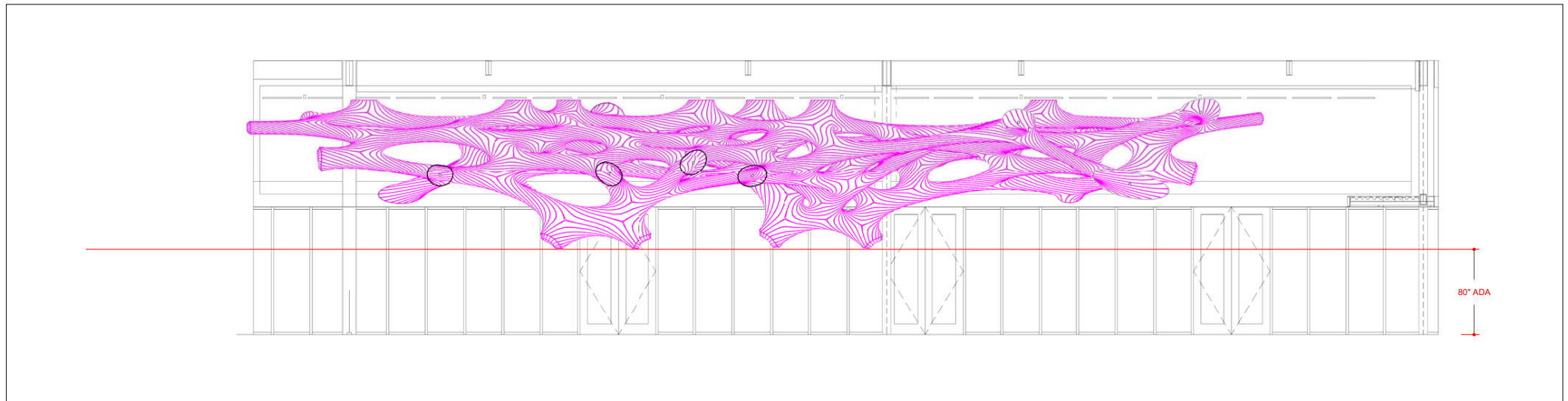
THEVERYMANY, LLC
MARC FORNES ©2018
www.theverymany.com
New York

INTERNAL ELEVATIONS - ANCHOR LOCATIONS

Additional Notes:



A-200.1 - LOBBY SOUTH ELEVATION



A-200.2 - LOBBY SOUTH ELEVATION

ISSUE DATE: 01 JUNE 2018

1/8" = 1' 0"

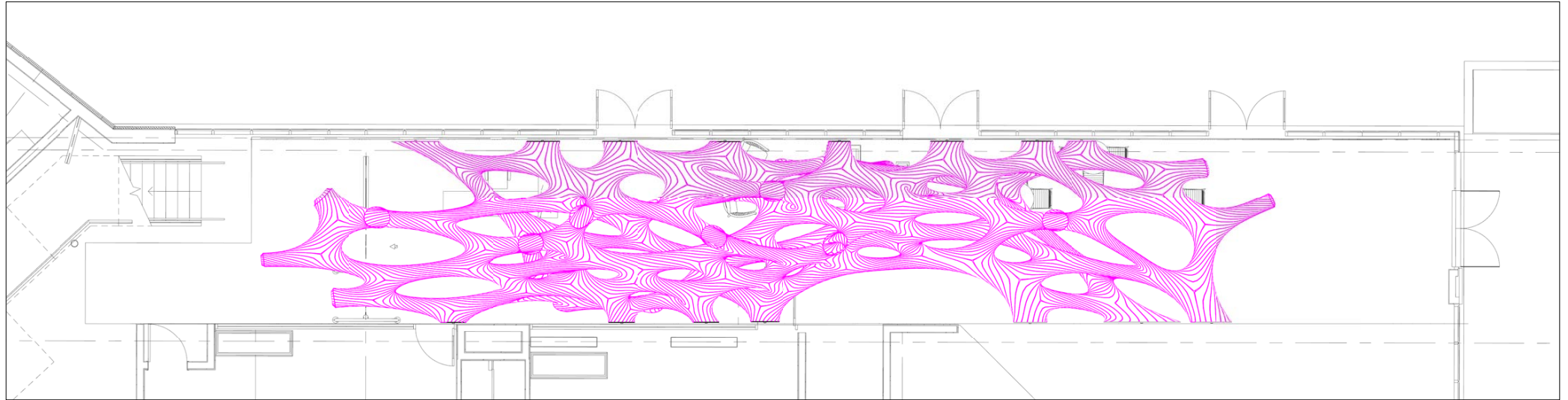
DOCUMENT:

A-200
**SFO - CONSOLIDATED
ADMINISTRATION CAMPUS LOBBY**
San Francisco, California

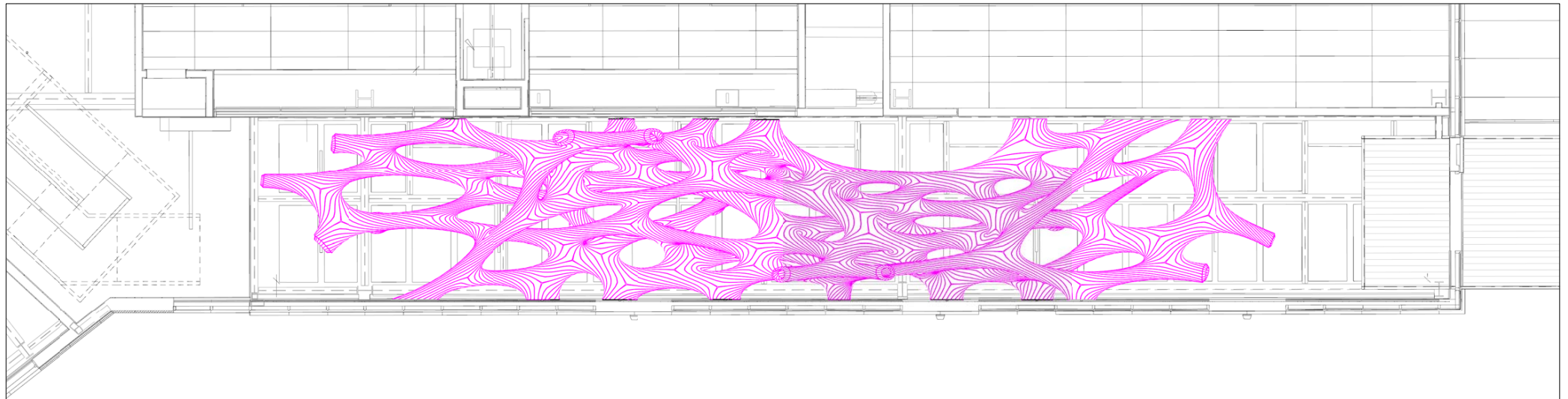
THEVERYMANY, LLC
MARC FORNES ©2018
www.theverymany.com
New York

INTERNAL ELEVATIONS

Additional Notes:



A-100.1 - LOBBY TOP VIEW



A-100.2 - LOBBY RCP

ISSUE DATE: 01 JUNE 2018

1/8" = 1' 0"

DOCUMENT:

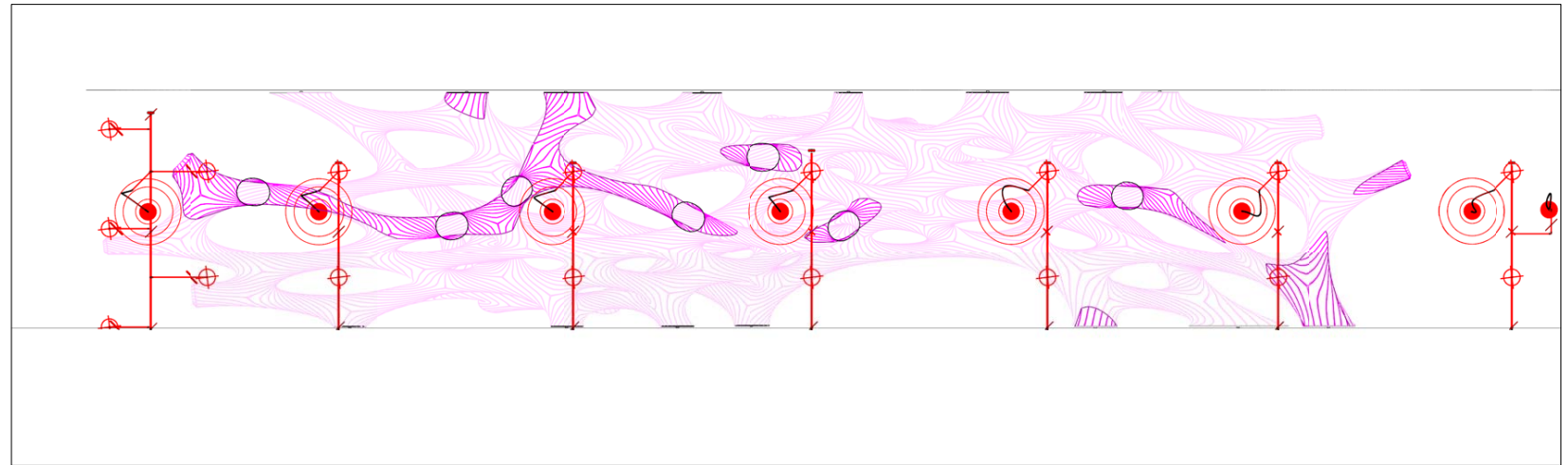
A-100

**SFO - CONSOLIDATED
ADMINISTRATION CAMPUS LOBBY**
San Francisco, California

THEVERYMANY, LLC
MARC FORNES ©2018
www.theverymany.com
New York

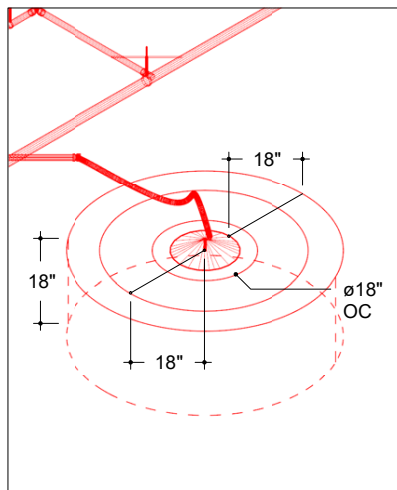
TOP VIEW / RCP

Additional Notes:

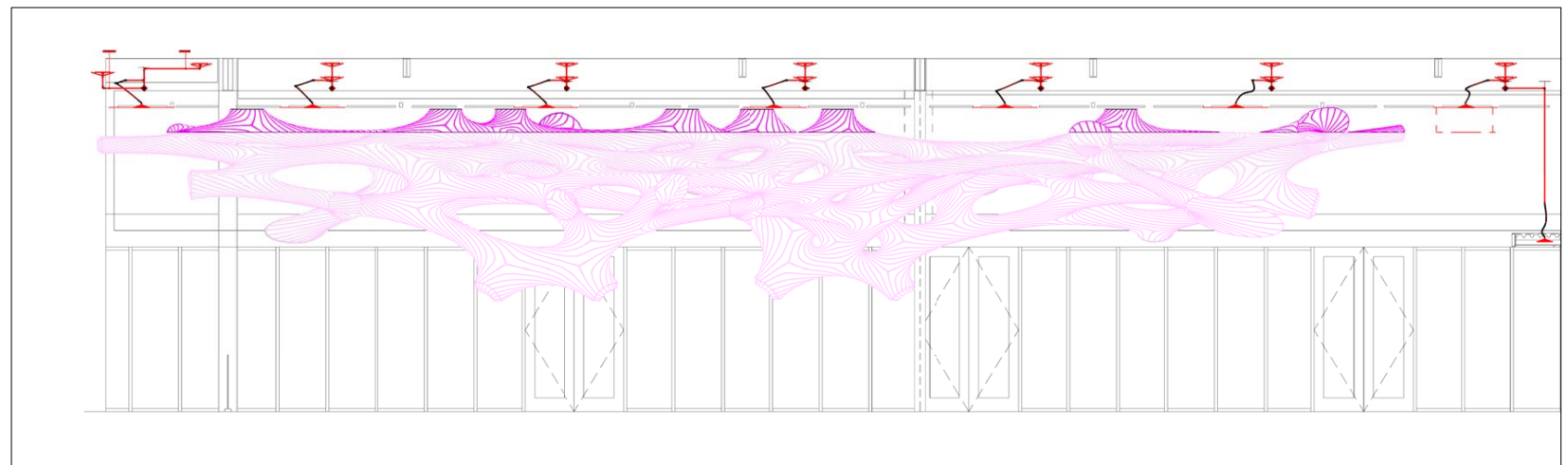


S-100.1 - LOBBY TOP VIEW

NOTES: Sprinkler head locations as per Glue model (09 NOV 2017)
As built locations to be confirmed in field.



S-100.3 - SPRINKLER CONDITIONS



S-100.2 - LOBBY SOUTH ELEVATION

SUE DATE: 01 JUNE 2018

1/8" = 1' 0"

DOCUMENT:

S-100
**SFO - CONSOLIDATED
ADMINISTRATION CAMPUS LOBBY**
San Francisco, California

THEVERYMANY, LLC
MARC FORNES ©2018
www.theverymany.com
New York

PLAN - SPRINKLER COORDINATION

Additional Notes: S-100.1 shows geometry in relation to multiple sprinkler coordination conditions (detailed in S-100.3)
Change in color indicates geometry 18" clear below sprinkler head (shown in S-100.2)