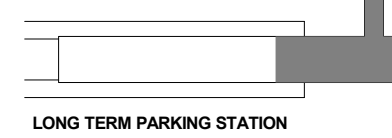
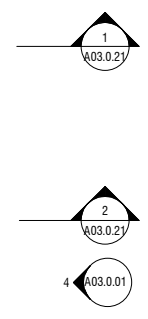


- GENERAL NOTES**
- NOMINAL T/ PLATFORM FIN FLR IS 58'-6". ACTUAL ELEVATION SHALL BE SET BY OTHERS BASED ON FIELD VERIFICATION OF GUIDEWAY RUNNING SURFACE.
  - REFER TO DOOR SCHEDULE AND TYPES ON A10.0.02
  - REFER TO PARTITION TYPE DETAIL SHEET A10.0.06
  - FLOOR AND ROOF ASSYS ARE 1-HR RATED REQUIRING UL LISTED ASSYS AT PENETRATIONS AND JOINTS.

KEYNOTES	
Key Value	Keynote Text

021	LTPG2, BY OTHERS
034	BARRIER WALL ASSY, BY OTHERS
201	PREFINISHED EXT ALUM COMPOSITE METAL PANEL (MP-1)
205	CURTAIN WALL GLAZING ASSY, TYP TOGGLE GLAZED (CW-1)
207	CURTAIN WALL GLAZING ASSY (CW-2A)
222	2" DIA STAINLESS STEEL CANE RAIL BARRIER AT OVERHEAD HAZARD, 27" AFF TYP
225	MAINT ACCESS DOOR INTEGRATED IN CURTAIN WALL GLAZING ASSY
247	FLOOR DRAIN, SPD
261	CONCRETE TOPPING SLAB, BROOM FINISH (CONC-1)
262	METAL CATWALK 1 1/2" DEEP GRATING BOLTED TO STEEL BRACKET ASSEMBLY
263	STEEL DIAGONAL BRACING, SSD
264	GYPSUM BOARD @ PORTAL, PAINTED
268	AESS MEMBER W/SCHEDULED INTUMESCENT PAINT AND P-3 FINISH COAT
270	STANDPIPE CABINET, STAINLESS STEEL #4 FINISH
274	PRE-FINISHED ALUMINUM COLUMN COVER
276	2" DIA FLOOR MTD SST GUARD - 12" AFF, TYP
277	DOORS ON MAGNETIC HOLD OPEN
283	AED LOCATION, STCD
346	AESS MEMBER, P-5 FINISH
365	FLIGHT INFO DISPLAY SYSTEMS (FIDS) DASHBOARD, 3-PANEL ARRAY



**SFO**

**San Francisco International Airport**

**SKANSKA** 1999 Harrison St., #1950  
Oakland, CA 94612  
skanska.com

**wsp** 425 Market St.  
17th Fl  
San Francisco, CA 94105  
wsp.com

**Robin Chiang & Company**  
381 Tehama Street  
San Francisco, CA 94103  
(415) 995-9870

NO.	DATE	REVISION DESCRIPTION	BY

CONTRACT NO. **10504.66**

PROJECT TITLE **SFO AIRTRAIN EXTENSION AND IMPROVEMENTS PROGRAM**

SHEET TITLE **LOT DD STATION**

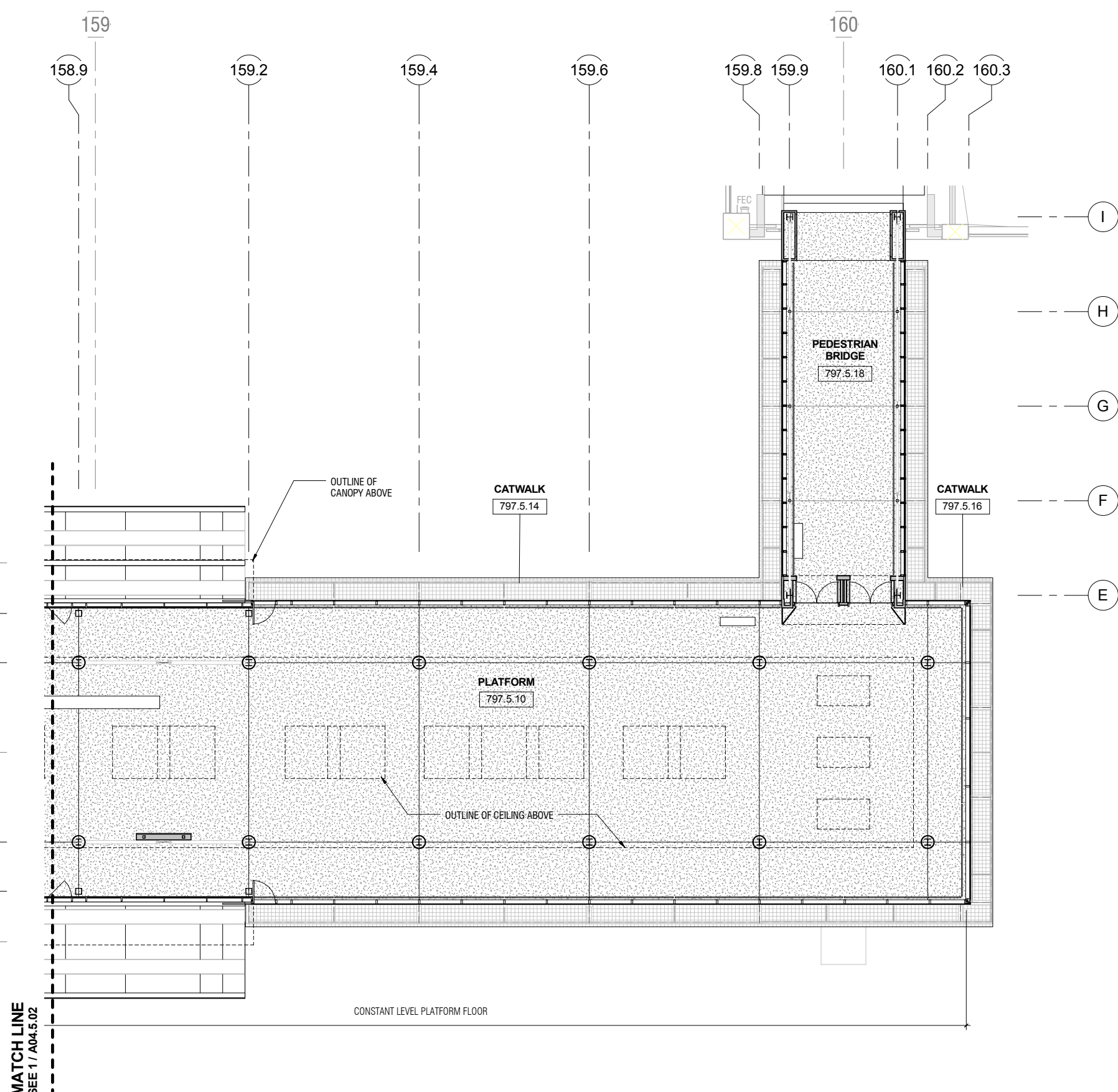
**SECTOR PLAN - PLATFORM LEVEL SHEET 3 OF 3**

SEAL

0 1/2" 1" 2" 3"

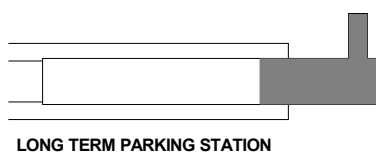
APPROVED:	
APPROVED:	
APPROVED:	
DESIGNED BY: R. CHIANG	CHECKED BY: J. ANGLIM
DRAWN BY: M. REEVES	DATE: JUNE 15, 2018
SCALE: AS NOTED	SIZE: REVISION: SHEET NUMBER: 0
797-A02.5.03	

**1 LEVEL 05 - PLATFORM PLAN - SECTOR 3**  
A00.0.03 A02.5.03 SCALE: 1/8" = 1'-0"



- GENERAL NOTES**
- REFER TO FINISH SCHEDULE SHEET A10.0.01 FOR FINISH LEGEND.
  - FRP PANELS OF A LIGHT COLOR SHALL EXTEND ABOVE ON WALLS ADJACENT & BEHIND MOP SINK, EXTENDING FROM TOP OF COVE BASE TO 8'-0" A.F.F. MIN.
  - ALIGN FLOOR JOINTS TO STRUCTURAL GRID AS INDICATED.

- FLOOR FINISH MATERIALS**
- CONC-1
  - CONC-3
  - GRA-1



**SFO**

San Francisco International Airport

**SKANSKA** 1999 Harrison St., #1950  
Oakland, CA 94612  
skanska.com

**wsp** 425 Market St.  
17th Fl.  
San Francisco, CA 94105  
wsp.com

**Robin Chiang & Company**  
381 Tehama Street  
San Francisco, CA 94103  
(415) 995-9870

NO.	DATE	REVISION DESCRIPTION	BY

CONTRACT NO. **10504.66**

PROJECT TITLE **SFO AIRTRAIN EXTENSION AND IMPROVEMENTS PROGRAM**

SHEET TITLE **LOT DD STATION**

**FINISH FLOOR PLAN**

**PLATFORM LEVEL- SHEET 3 OF 3**

SEAL

0 1/2" 1" 2" 3"

APPROVED:	DESIGNED BY:	CHECKED BY:
APPROVED:	R. CHIANG	J. ANGLIM
APPROVED:	DRAWN BY:	DATE:
	M. REEVES	JUNE 15, 2018
	SCALE:	SIZE REVISION
	AS NOTED	ANSI-D 0
	SHEET NUMBER	
	797-A04.5.03	

**1 LEVEL 02 - PLATFORM FINISH PLAN - SECTOR 3**  
A00.0.03 A04.5.03 SCALE: 1/8" = 1'-0"

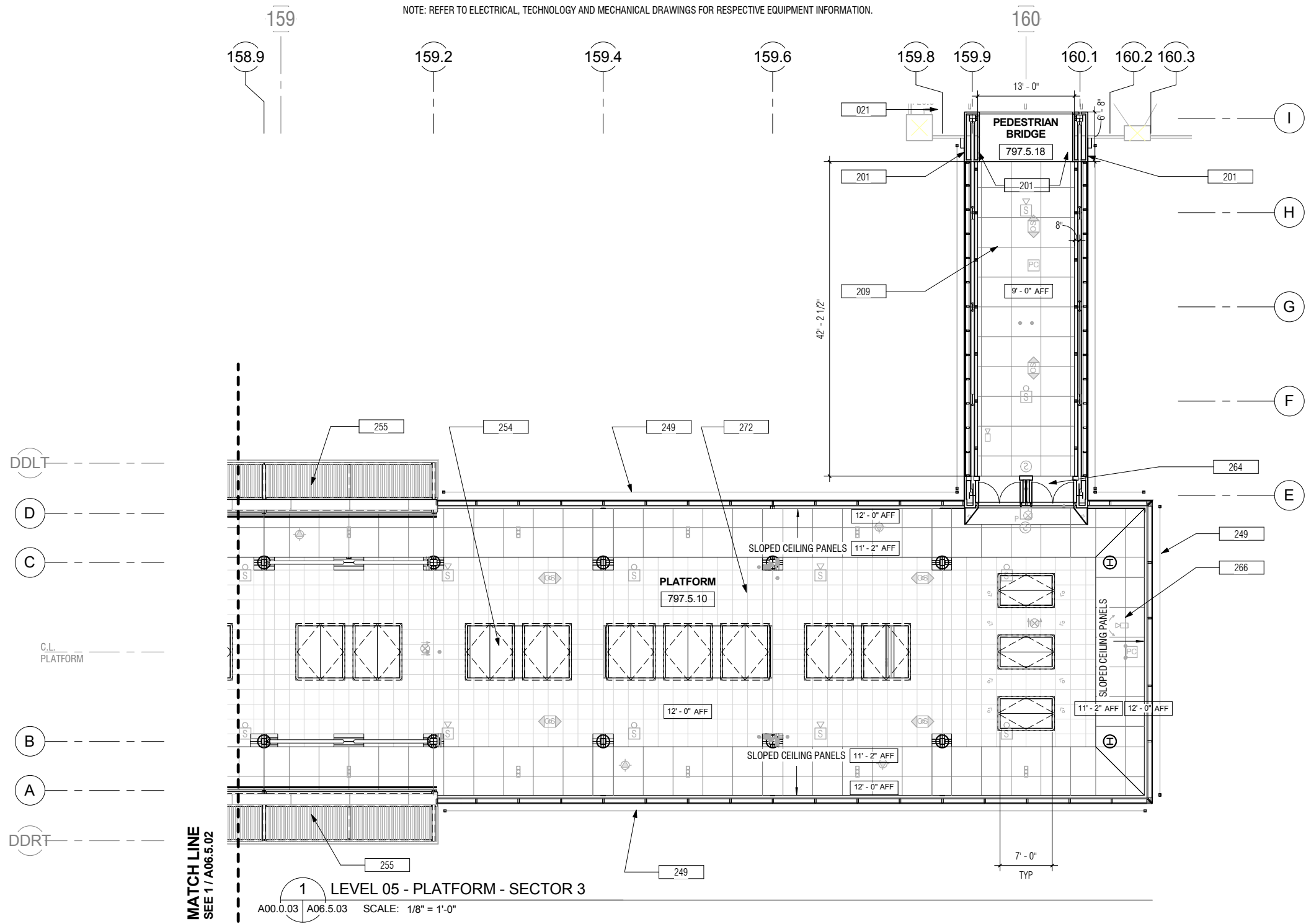
CEILING SYMBOLS LEGEND			
	CEILING ELEVATION ABOVE FINISH FLOOR		CEILING RECESSED DOWNLIGHT
	SLOPED CEILING		PUBLIC ADDRESS SYSTEM
	EMERGENCY EXIT LIGHT @ EXIT DOOR		LED LINEAR LIGHT FIXTURE RECESSED
	CEILING MOUNTED EMERGENCY EXIT SIGN W/ DIRECTION		LED LINEAR LIGHT FIXTURE SURFACE MOUNTED
	OCCUPANCY SENSOR		FAN GRILLED
	SPECIAL PURPOSE CONNECTION		PASSENGER COUNT SYSTEM
	SECURITY CAMERA		RECESSED LIGHT AT COVE
	CEILING RECESSED ADJUSTABLE LIGHT		TRAIN INFORMATION DISPLAY
	CEILING RECESSED SPOT LIGHT		ALUMINUM PERFORATED CEILING PANEL 2'X2'
	ROOF MOUNTED SMOKE DOORS		ALUMINUM PERFORATED CEILING PANEL 4'X4'

NOTE: REFER TO ELECTRICAL, TECHNOLOGY AND MECHANICAL DRAWINGS FOR RESPECTIVE EQUIPMENT INFORMATION.

**GENERAL NOTES**

- NOMINAL T/ PLATFORM FIN FLR IS 58'-6". ACTUAL ELEVATION SHALL BE SET BY OTHERS BASED ON FIELD VERIFICATION OF GUIDEWAY RUNNING SURFACE.
- REFER TO RESPECTIVE DISCIPLINE SHEETS FOR LIGHTING, EQUIPMENT AND DEVICES, TYP.
- SEE SHEET A00.0.03 FOR FIREPROOFING SCHEDULE

KEYNOTES	
Key Value	Keynote Text
021	LTPG2, BY OTHERS
201	PREFINISHED EXT ALUM COMPOSITE METAL PANEL (MP-1)
209	PREFINISHED ALUM SUSPENDED CLG 4'X4' (CP-1)
249	12 MM OVERHEAD CABLE FALL RESTRAINT SYSTEM
254	UL 793 LISTED SMOKE VENT WITH FIRE ALARM SYSTEM ELECTRICAL INTEGRATION
255	METAL ROOF ASSEMBLY OVER CANOPY STEEL FRAMING @ LOT DD (P-3) SILVER
264	GYP SUM BOARD @ PORTAL, PAINTED
266	SLOPED CEILING PREFINISHED PERFORATED ALUM CEILING PANELS
272	PREFINISHED PERFORATED ALUM CEILING PANELS (CP-1)



MATCH LINE  
SEE 1 / A06.5.02

1 LEVEL 05 - PLATFORM - SECTOR 3  
A00.0.03 A06.5.03 SCALE: 1/8" = 1'-0"

LONG TERM PARKING STATION

WEST  
TRUE NORTH

CONTRACT NO. 10504.66

PROJECT TITLE SFO AIRTRAIN EXTENSION AND IMPROVEMENTS PROGRAM

LOT DD STATION

SHEET TITLE REFLECTED CEILING PLAN PLATFORM LEVEL - SHEET 3 OF 3

SEAL

0 1/2" 1" 2" 3"

APPROVED:	
APPROVED:	
APPROVED:	
DESIGNED BY: R. CHIANG	CHECKED BY: J. ANGLIM
DRAWN BY: M. REEVES	DATE: JUNE 15, 2018
SCALE: AS NOTED	SIZE REVISION ANSI-D 0
SHEET NUMBER	797-A06.5.03

**SFO**

San Francisco International Airport

**SKANSKA** 1999 Harrison St., #1950 Oakland, CA 94612 skanska.com

**wsp** 425 Market St. 17th Fl. San Francisco, CA 94105 wsp.com

**Robin Chiang & Company** 381 Tehama Street San Francisco, CA 94103 (415) 995-9870



