


ACCESSIBILITY
COMPLIANCE LETTER

PERSPECTIVE
(FOR INFORMATION ONLY-NOT FOR CONSTRUCTION)

City and County of San Francisco



Edwin M. Lee, Mayor
Mohammed Nuru, Director

San Francisco Department of Public Works


Office of the Deputy Director and City Architect, Edgar Lopez

Building Design & Construction

30 Van Ness Avenue

San Francisco, CA 94102

(415) 557-4700 | www.sfdpw.org



Julia Laue, Principal Architect & Manager

DISABILITY ACCESS COMPLIANCE FOR CITY FUNDED PROJECTS

Applicant: Fill in project name and address and then scan this and DBI DA-2 forms into plans.

Project: Fish Passage Facilities within the Alameda Creek Watershed

Address: Alameda Creek Watershed

Leave Area Below Blank – for DPW BDC Disability Access Coordinator (DAC) Staff Use

PLAN REVIEW STAGE: DPW-Building Design and Construction DAC has approved:

☐ Technical Infeasibility / Unreasonable Hardship Request

Date:

☐ Playground ADA Inventory Form

Date:

☐ Pre-application review / site permit

Date:

☒ Final Construction Plans for Permit Applications

Date:

INSPECTION STAGE: The following inspections are required, if selected:

Call DPW BDC Disability Access Coordinator to schedule-- 415-557-4676

☐ Technical Infeasibility / Unreasonable Hardship Request

☐ Rough Framing, after plumbing and electrical rough is complete, prior to close-up

☐ Mock-up inspection of

☐ Signage, including proofs and color samples prior to fabrication

☒ Door closer pressure and timing

☐ Power door operator testing per BHMA A156.19

☐ Play Area equipment, surfacing and Path of Travel

☐ Off-site curb ramps, blue zone parking spaces and passenger loading zones


☐ Inspection at 95% to 99% complete, but prior to T.C. O.

☐ Final sign-off of Project, signing of DBI Job Card

APPROVED


OCT 14 2014

MAYOR'S OFFICE
ON DISABILITY



10/14/2014

John Paul Scott, AIA, CAsp, ADA / DPW BDC Disability Access Coordinator Date



J:\178044\Calaveras Fish Passage\Fish Passage Facility\DAC Review\DPW BDC DAC sign off form 78044 Sep 25 2014.docx

San Francisco Department of Public Works

Making San Francisco a beautiful, livable, vibrant, and sustainable city.



CONTRACT NO. WD-2729

CITY AND COUNTY OF SAN FRANCISCO

PUBLIC UTILITIES COMMISSION

INFRASTRUCTURE DIVISION

ENGINEERING MANAGEMENT BUREAU

FISH PASSAGE FACILITIES WITHIN THE ALAMEDA CREEK WATERSHED

ACDD DISABILITY ACCESS FORM PERSPECTIVE

CHECKED / APPROVED

DRAWN

SECTION MANAGER

DESIGNED

MAINTENANCE ENGINEERING MANAGER

SCALE AS SHOWN

DATE 4/2015

APPROVED

APPROVED

MANAGER, ENGINEERING MANAGEMENT BUREAU

MANAGER, WATER SUPPLY AND TREATMENT DIVISION

PLAN NO. 1AR02

DRAWING/FILE NO. E-XXXX

REVISION NO. 0

CITY AND COUNTY OF SAN FRANCISCO

DEPARTMENT OF PUBLIC WORKS

BUILDING DESIGN & CONSTRUCTION

PROJECT ENGINEER M. GARELLO

DRAWN K. FORD

PROJECT MANAGER S. JAIN/J. STEAD

DESIGNED K. FORD

APPROVAL J. LAURE

CHECKED P. WONG

NO.

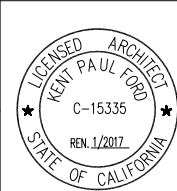
DATE

DESCRIPTION

BY

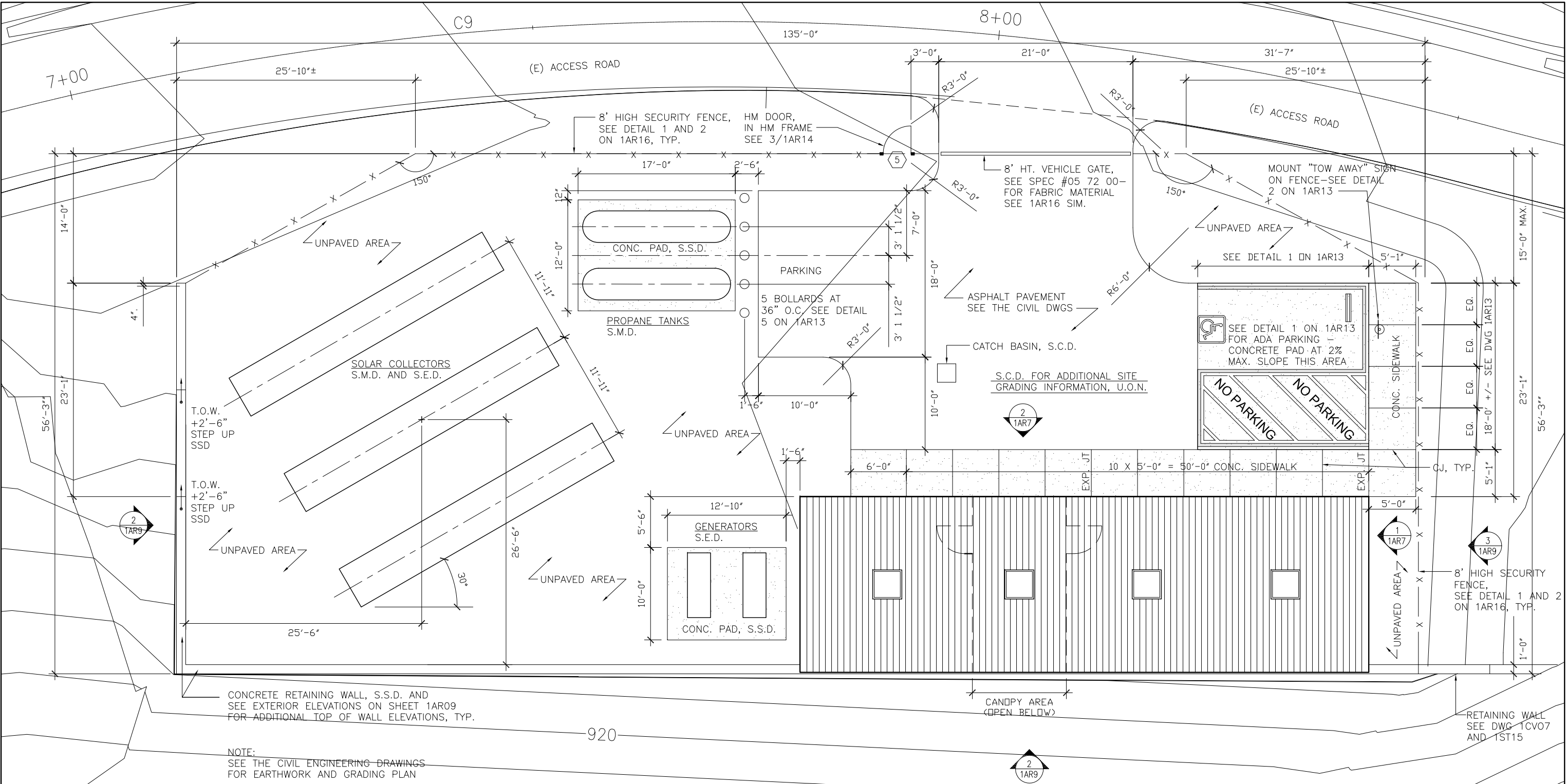
APPROVED

REVISIONS



FOR THE SOLE USE OF THE
DOCUMENT RECIPIENT – DO NOT CITE,
COPY, OR CIRCULATE WITHOUT THE
EXPRESS PERMISSION OF THE SFPUC.

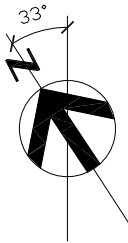
ELEVATION
DATUM
NAD83
NAV88



NOTE:
SEE THE CIVIL ENGINEERING DRAWINGS
FOR EARTHWORK AND GRADING PLAN

SITE PLAN

SCALE: 3/16" = 1'-0"



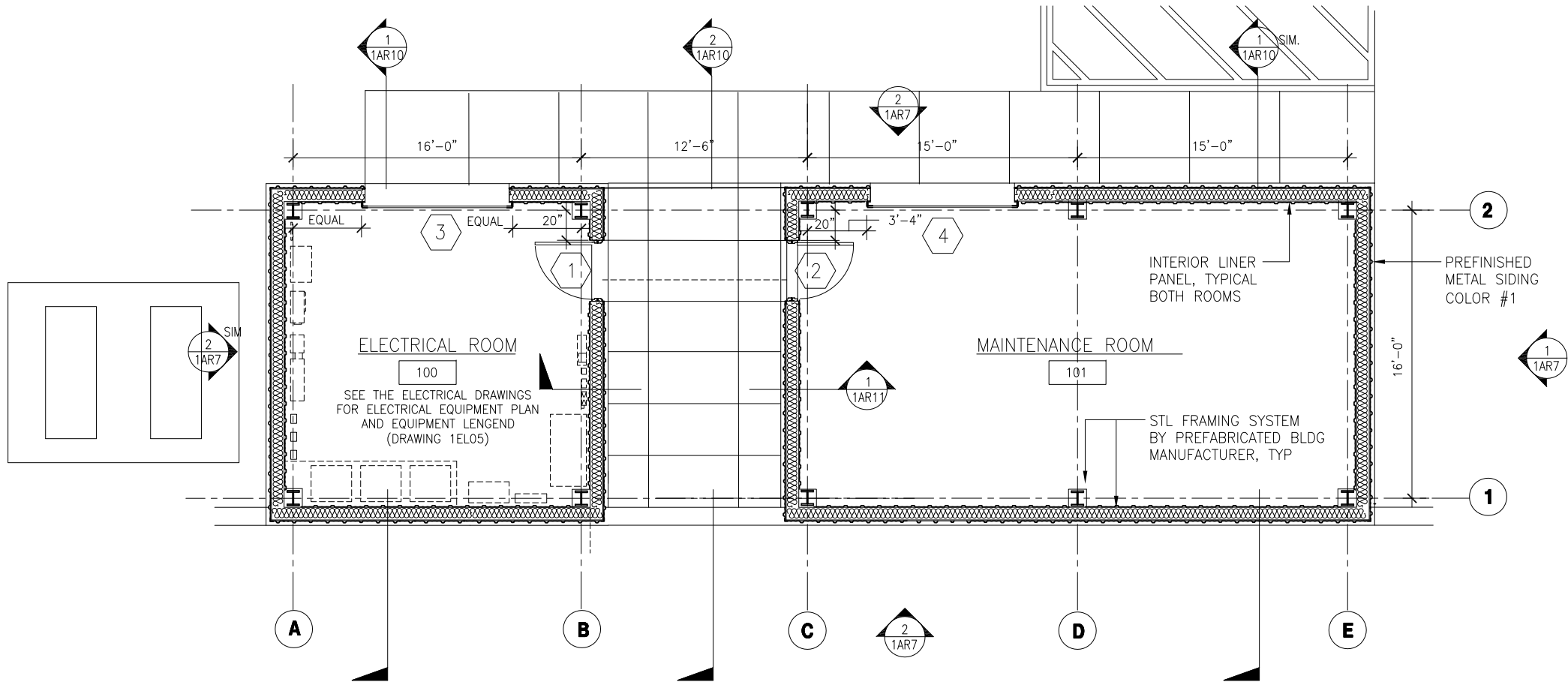
FOR THE SOLE USE OF THE
DOCUMENT RECIPIENT - DO NOT CITE,
COPY, OR CIRCULATE WITHOUT THE
EXPRESS PERMISSION OF THE SFPUC.

ELEVATION
DATUM
NAD83
NAV88

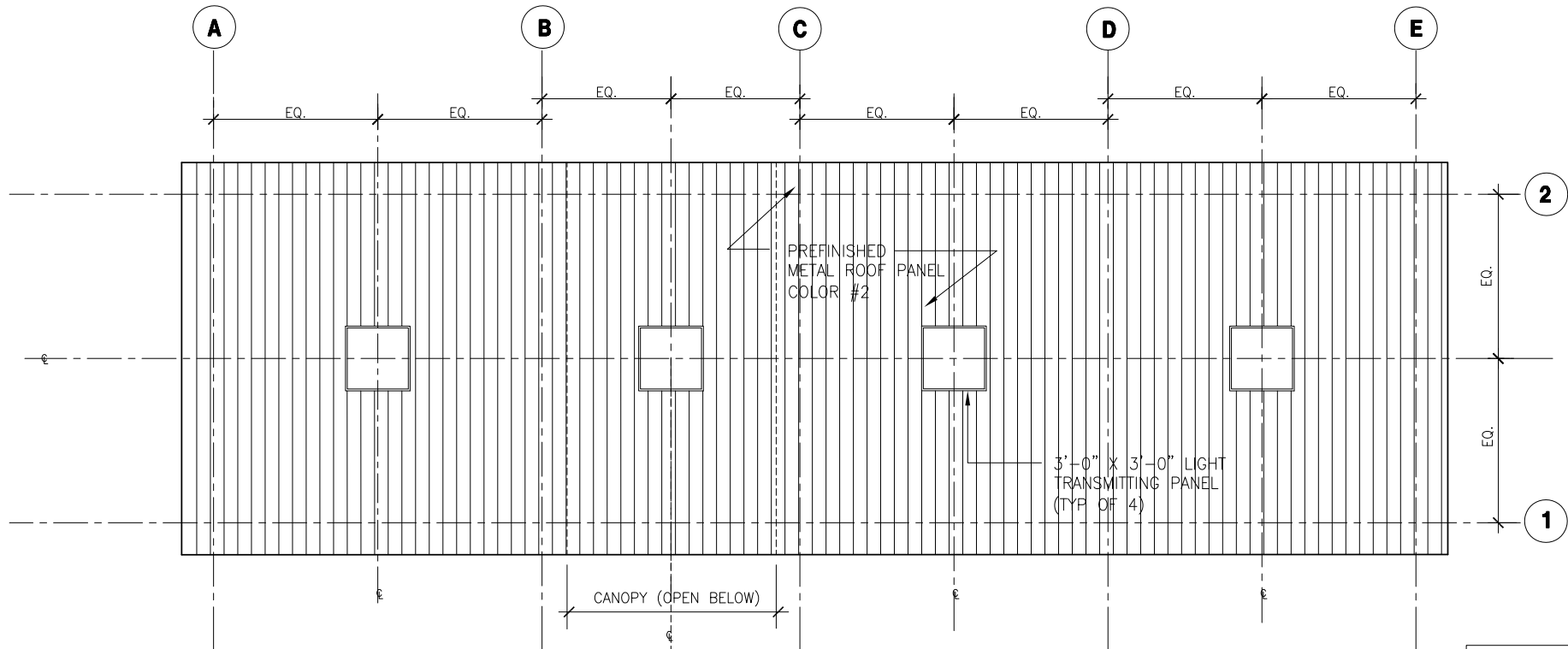


| | | | |
|--|---------------------|-------------|----|
| CITY AND COUNTY OF SAN FRANCISCO DEPARTMENT OF PUBLIC WORKS BUILDING DESIGN & CONSTRUCTION | | | |
| PROJECT ENGINEER M. GARELLO | DRAWN K. FORD | | |
| PROJECT MANAGER S. JAIN/J. STEAD | DESIGNED K. FORD | | |
| APPROVAL J. LAURE | CHECKED P. WONG | | |
| | | | |
| | | | |
| NO. | DATE | DESCRIPTION | BY |
| REVISIONS | | | |

| | | |
|--|--|-------------------|
| CONTRACT NO. WD-2729 CITY AND COUNTY OF SAN FRANCISCO PUBLIC UTILITIES COMMISSION INFRASTRUCTURE DIVISION ENGINEERING MANAGEMENT BUREAU FISH PASSAGE FACILITIES WITHIN THE ALAMEDA CREEK WATERSHED ACDD BUILDING SITE PLAN | | |
| CHECKED / APPROVED | DRAWN | |
| SECTION MANAGER | DESIGNED | |
| MAINTENANCE ENGINEERING MANAGER | SCALE AS SHOWN | DATE 4/2015 |
| APPROVED | APPROVED | |
| MANAGER, ENGINEERING MANAGEMENT BUREAU | MANAGER, WATER SUPPLY AND TREATMENT DIVISION | |
| PLAN NO. 1AR05 | DRAWING/FILE NO. E-XXXX | REVISION NO. 0 |



1 FLOOR PLAN
SCALE 1/4"=1'-0"



2 ROOF PLAN
SCALE 1/4"=1'-0"

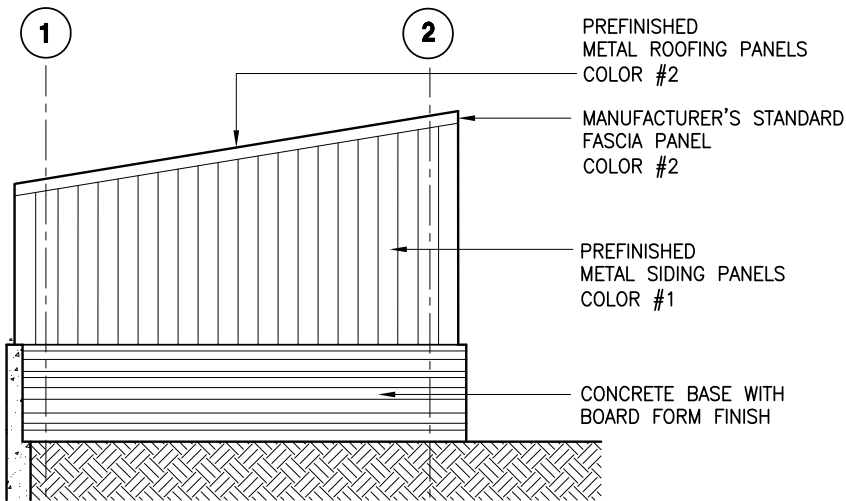
FOR THE SOLE USE OF THE
DOCUMENT RECIPIENT - DO NOT CITE,
COPY, OR CIRCULATE WITHOUT THE
EXPRESS PERMISSION OF THE SFPUC.

ELEVATION
DATUM
NAD83
NAVDS88



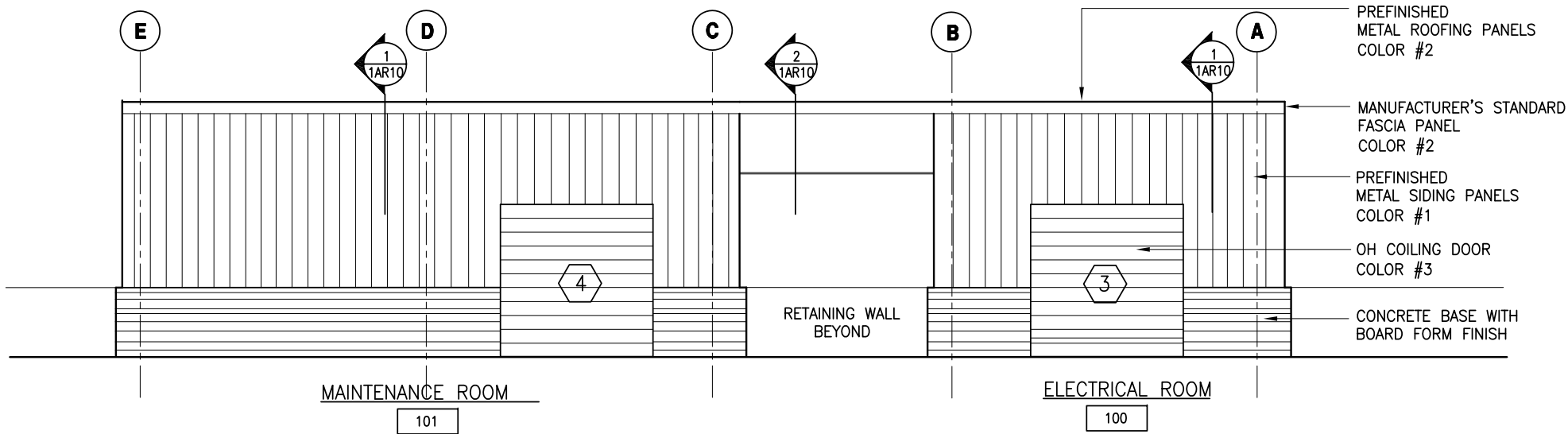
| CITY AND COUNTY OF SAN FRANCISCO DEPARTMENT OF PUBLIC WORKS BUILDING DESIGN & CONSTRUCTION | | | |
|--|---------------------|-------------|-----------|
| PROJECT ENGINEER M. GARELLO | DRAWN K. FORD | | |
| PROJECT MANAGER S. JAIN/J. STEAD | DESIGNED K. FORD | | |
| APPROVAL J. LAURE | CHECKED P. WONG | | |
| | | | |
| | | | |
| NO. | DATE | DESCRIPTION | BY APPR'D |
| REVISIONS | | | |

| | | |
|---|--|-------------------|
| CONTRACT NO. WD-2729 | | |
| CITY AND COUNTY OF SAN FRANCISCO PUBLIC UTILITIES COMMISSION INFRASTRUCTURE DIVISION ENGINEERING MANAGEMENT BUREAU | | |
| FISH PASSAGE FACILITIES WITHIN THE ALAMEDA CREEK WATERSHED | | |
| ACDD FLOOR AND ROOF PLANS | | |
| CHECKED / APPROVED | DRAWN | |
| SECTION MANAGER | DESIGNED | |
| MAINTENANCE ENGINEERING MANAGER | SCALE AS SHOWN | DATE 4/2015 |
| APPROVED | APPROVED | |
| MANAGER, ENGINEERING MANAGEMENT BUREAU | MANAGER, WATER SUPPLY AND TREATMENT DIVISION | |
| PLAN NO. 1AR06 | DRAWING/FILE NO. E-XXXX | REVISION NO. 0 |



1 EAST ELEVATION (WEST SIMILAR)
SCALE: 1/4"=1'-0"

NOTES:
FOR PIPE PENETRATIONS THROUGH
METAL SIDING SEE DETAIL 2 ON
SHEET 1AR11
ALL EXTERIOR SURFACES OF
CONCRETE TO RECEIVE BOARD
FORM FINISH



2 NORTH ELEVATION
SCALE: 1/4"=1'-0"

CONTRACT NO. WD-2729

CITY AND COUNTY OF SAN FRANCISCO
PUBLIC UTILITIES COMMISSION
INFRASTRUCTURE DIVISION
ENGINEERING MANAGEMENT BUREAU

FISH PASSAGE FACILITIES WITHIN THE ALAMEDA
CREEK WATERSHED

ACDD EXTERIOR ELEVATIONS

CITY AND COUNTY OF SAN FRANCISCO
DEPARTMENT OF PUBLIC WORKS
BUILDING DESIGN & CONSTRUCTION

| | | | |
|------------------|------------------|----------|---------|
| PROJECT ENGINEER | M. GARELLO | DRAWN | K. FORD |
| PROJECT MANAGER | S. JAIN/J. STEAD | DESIGNED | K. FORD |
| APPROVAL | J. LAURE | CHECKED | P. WONG |

| | | | | |
|-----------|------|-------------|----|--------|
| NO. | DATE | DESCRIPTION | BY | APPR'D |
| REVISIONS | | | | |

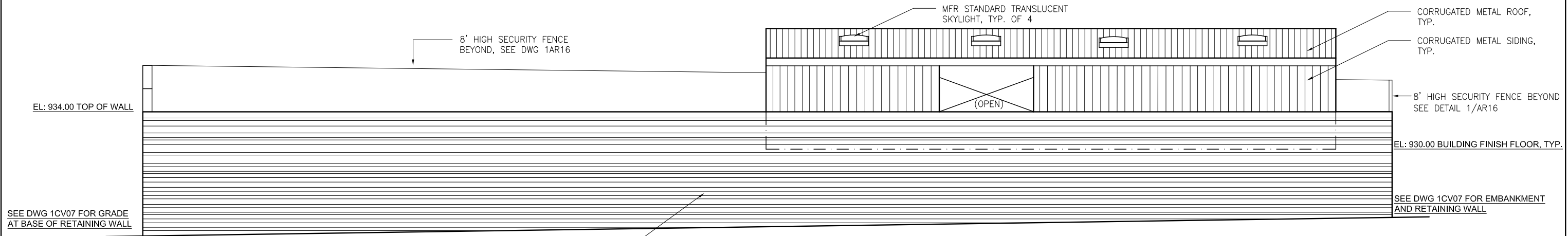
| | | |
|---------------------------------|----------------|-------------|
| CHECKED / APPROVED | DRAWN | |
| SECTION MANAGER | DESIGNED | |
| MAINTENANCE ENGINEERING MANAGER | SCALE AS SHOWN | DATE 4/2015 |

| | | |
|--|--|----------------|
| MANAGER, ENGINEERING MANAGEMENT BUREAU | MANAGER, WATER SUPPLY AND TREATMENT DIVISION | |
| PLAN NO. 1AR07 | DRAWING/FILE NO. E-XXXX | REVISION NO. 0 |

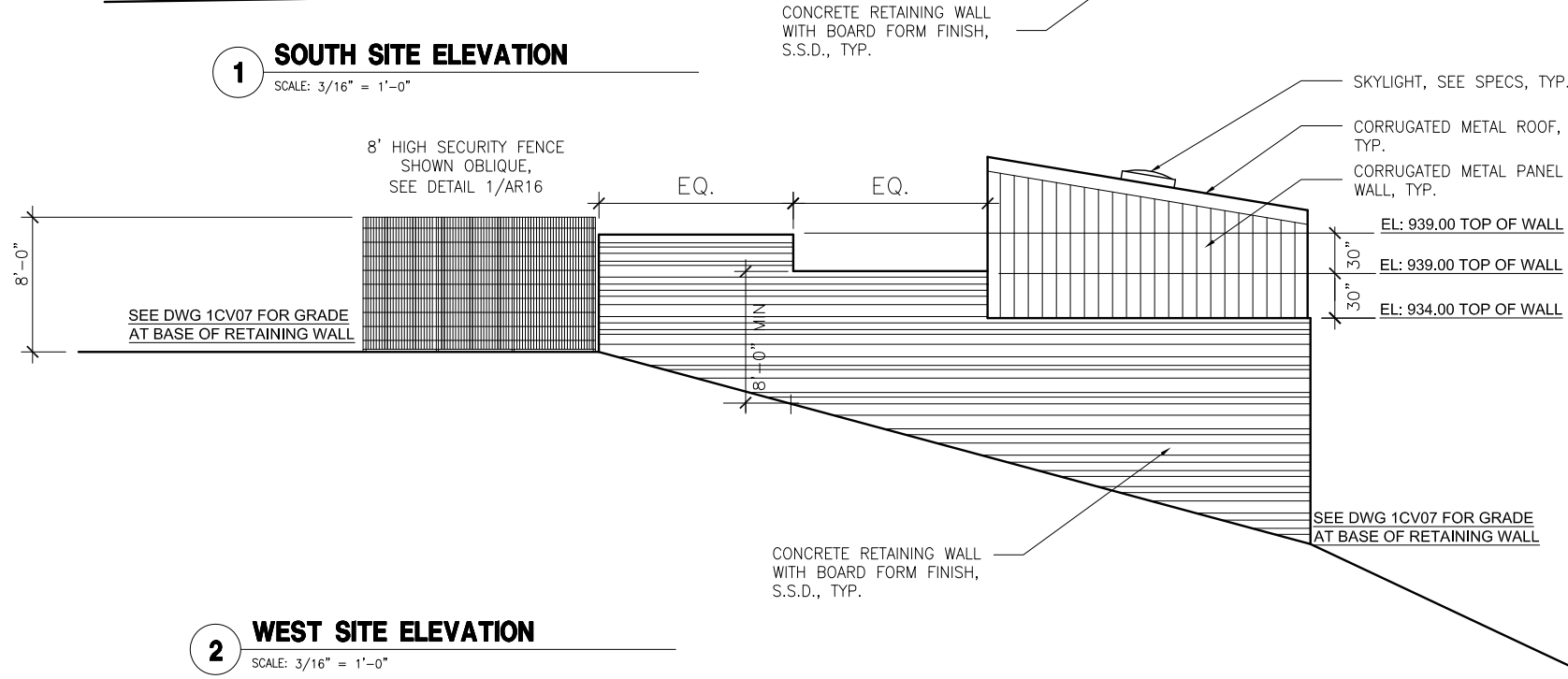
FOR THE SOLE USE OF THE
DOCUMENT RECIPIENT - DO NOT CITE,
COPY, OR CIRCULATE WITHOUT THE
EXPRESS PERMISSION OF THE SFPUC.

ELEVATION
DATUM
NAD83
NAV88

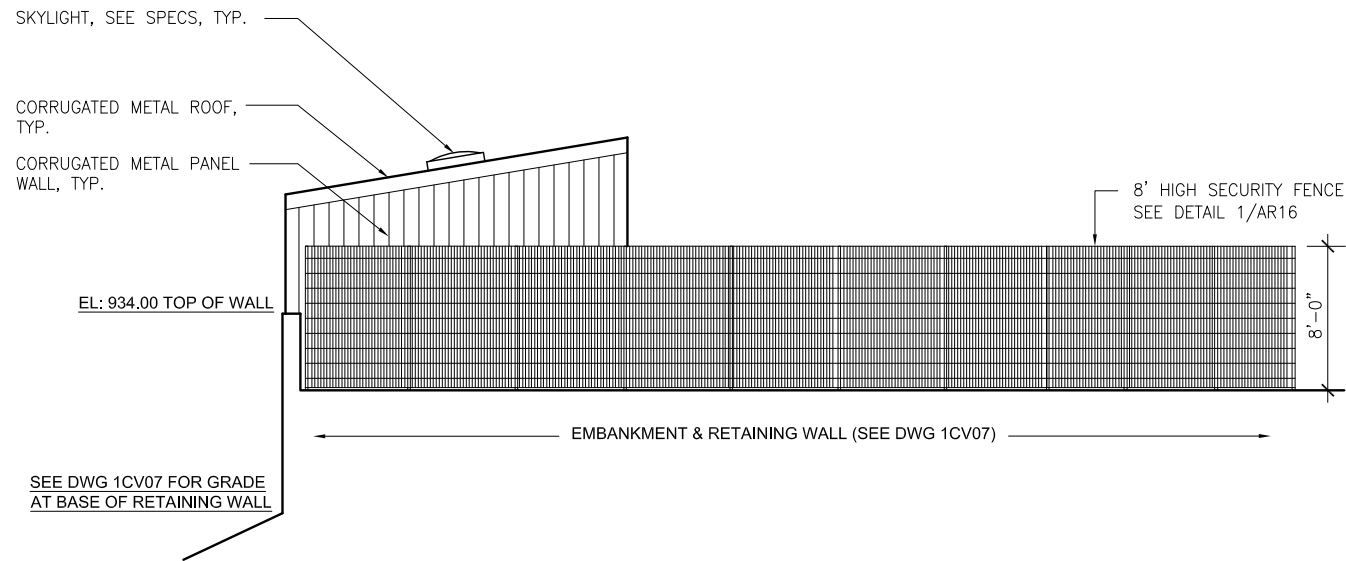




1 SOUTH SITE ELEVATION
SCALE: 3/16" = 1'-0"



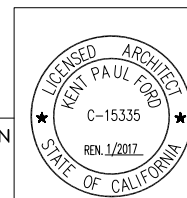
2 WEST SITE ELEVATION
SCALE: 3/16" = 1'-0"



3 EAST SITE ELEVATION
SCALE: 3/16" = 1'-0"

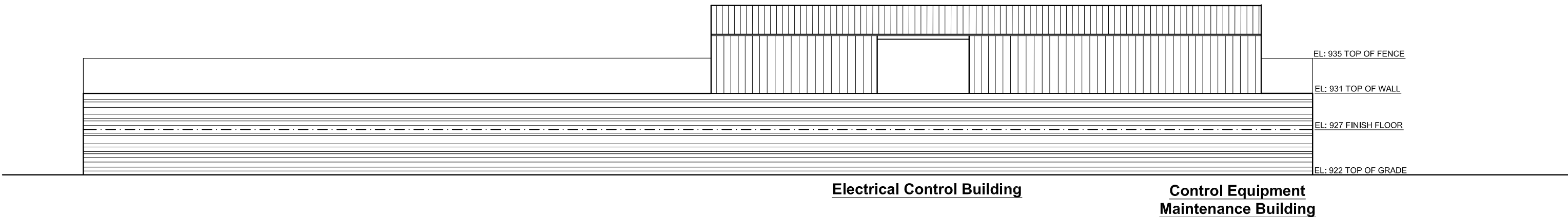
FOR THE SOLE USE OF THE
DOCUMENT RECIPIENT - DO NOT CITE,
COPY, OR CIRCULATE WITHOUT THE
EXPRESS PERMISSION OF THE SFPUC.

ELEVATION
DATUM
NAD83
NAVD88

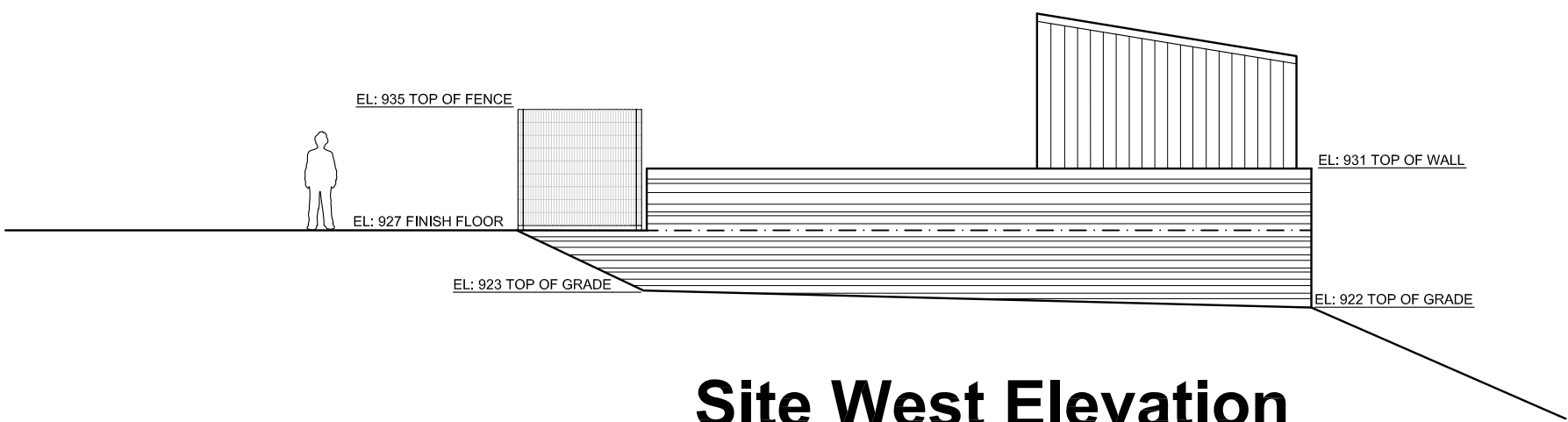


| | | | |
|--|----------------------------|-------------|-----------|
| CITY AND COUNTY OF SAN FRANCISCO DEPARTMENT OF PUBLIC WORKS BUILDING DESIGN & CONSTRUCTION | | | |
| PROJECT ENGINEER M. GARELLO | DRAWN K. FORD | | |
| PROJECT MANAGER S. JAIN/J. STEAD | DESIGNED K. FORD | | |
| APPROVAL J. LAURE | CHECKED P. WONG | | |
| | | | |
| | | | |
| NO. | DATE | DESCRIPTION | BY APPR'D |
| REVISIONS | | | |

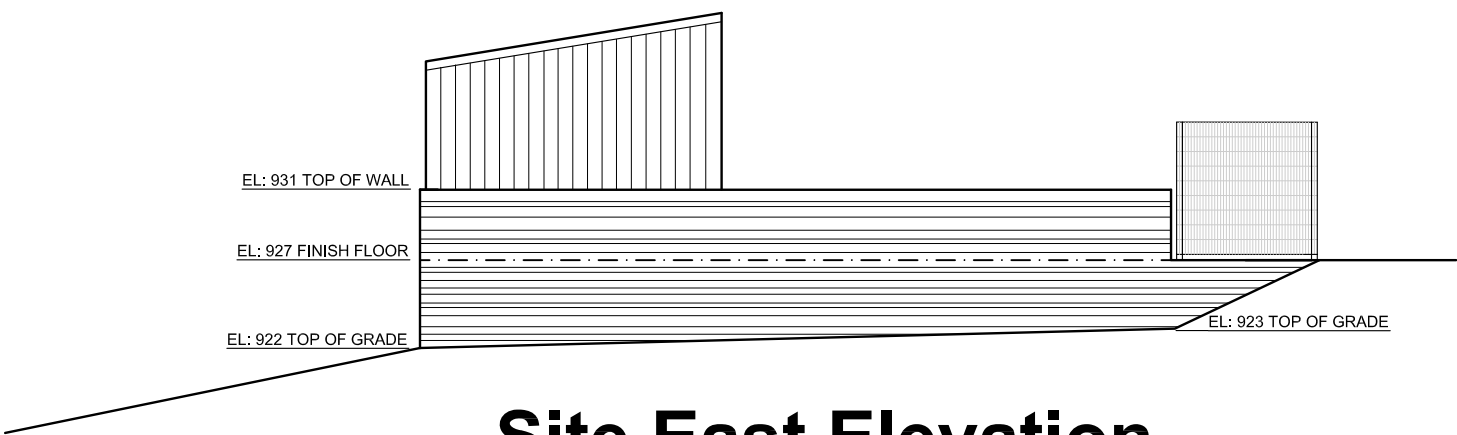
| | | |
|---|--|-------------------|
| CONTRACT NO. WD-2729 CITY AND COUNTY OF SAN FRANCISCO PUBLIC UTILITIES COMMISSION INFRASTRUCTURE DIVISION ENGINEERING MANAGEMENT BUREAU FISH PASSAGE FACILITIES WITHIN THE ALAMEDA CREEK WATERSHED | | |
| ACDD SITE EXTERIOR ELEVATIONS | | |
| CHECKED / APPROVED | DRAWN | |
| SECTION MANAGER | DESIGNED | |
| MAINTENANCE ENGINEERING MANAGER | SCALE AS SHOWN | DATE 4/2015 |
| APPROVED | APPROVED | |
| MANAGER, ENGINEERING MANAGEMENT BUREAU | MANAGER, WATER SUPPLY AND TREATMENT DIVISION | |
| PLAN NO. 1AR09 | DRAWING/FILE NO. E-XXXX | REVISION NO. 0 |



Site South Elevation



Site West Elevation



Site East Elevation

Site Exterior Elevations