

SAN FRANCISCO BOTANICAL GARDEN NURSERY & MAINTENANCE FACILITY





SAN FRANCISCO BOTANICAL GARDEN

PROJECT LOCATION

SF Civic Design Review Design Development Submittal 11/06/20



EXISTING NURSERY AREA

GOAL 1. EFFICIENT, FUNCTIONAL & SAFE

Design a nursery that works and improves the efficiency of nursery work and workflow. Organize a logical arrangement of activity spaces – indoor and out – to best support the workflow and to create a safe, accessible and code compliant work environment specifically designed to support the long-term goals and mission of the San Francisco Botanical Gardens.

GOAL 2. CONSOLIDATED

Increase the growing space within the nursery and consolidate outlying nursery growing spaces into a defined nursery area, thus improving the overall experience and areas of the public garden.

GOAL 3. CLEAR

Clearly delineate public spaces from staff (and nursery volunteer) only spaces. Around the perimeter of the nursery, create and demarcate a clear physical boundary between the public and staff/volunteer realms in a manner that is mindful of and enhances the visitor experience. Within nursery, organize workspaces for efficient workflow with designated areas for product delivery and plant quarantine.

GOAL 4. SUSTAINABLE & DURABLE

Be sustainable and sustainably conscious in every project decision, from siting buildings and outdoor spaces; building construction types and materials; use of resources from building materials to utilities.

GOAL 5. ON TIME / ON BUDGET

Project well planned, designed and managed, with ongoing construction cost monitoring and an efficient and effective process.



EXISTING BUILDINGS EXTERIOR

SF Civic Design Review Design Development Submittal 11/06/20



EXISTING BUILDINGS INTERIOR
SF Civic Design Review Design Development Submittal 11/06/20



EXISTING NURSERY GROWING AREA EAST
SF Civic Design Review Design Development Submittal 11/06/20



EXISTING NURSERY GROWING AREA WEST
SF Civic Design Review Design Development Submittal 11/06/20



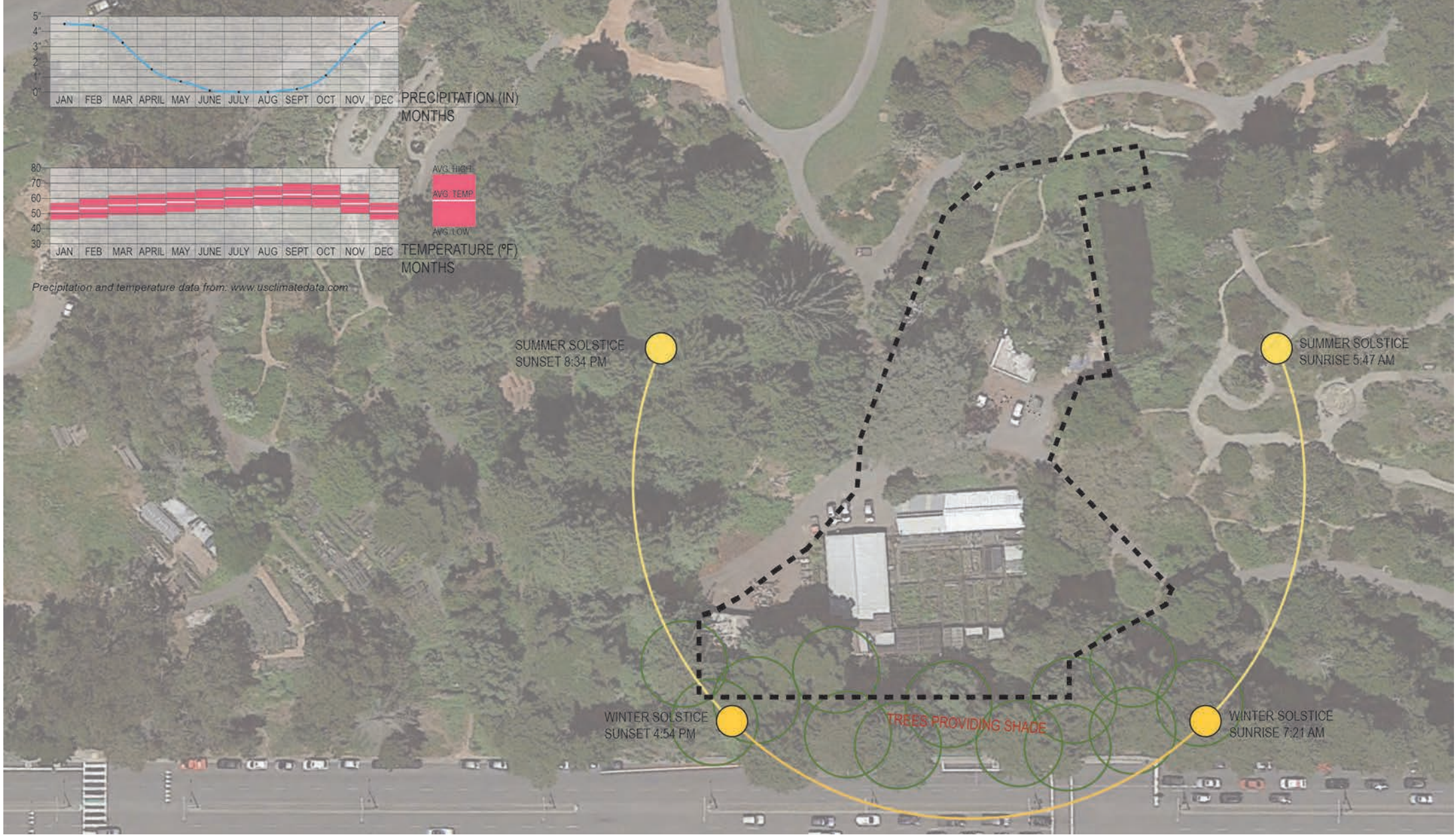
SIEGEL & STRAIN Architects

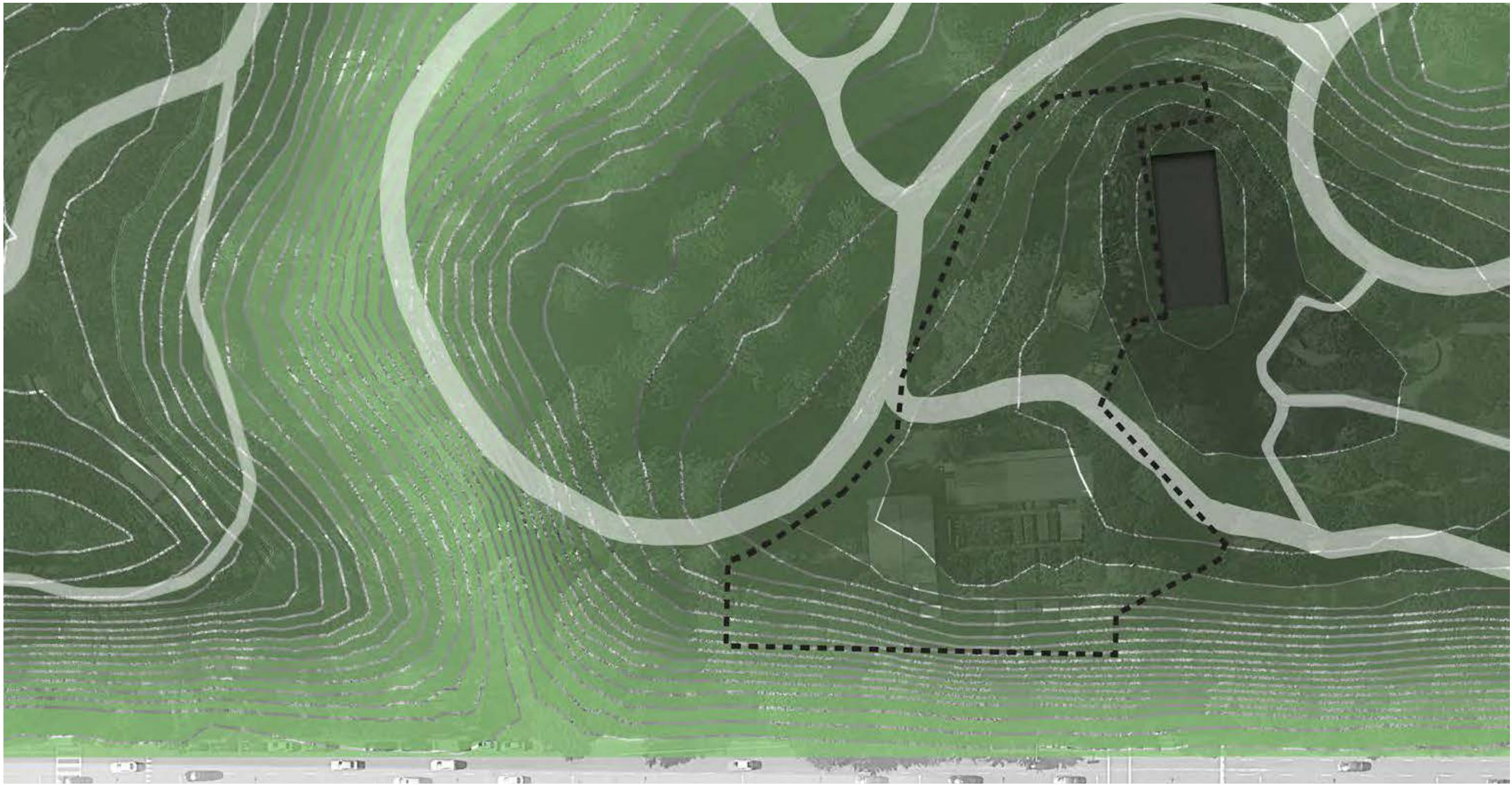
BAY TREE DESIGN INC.

DESIGN DRIVERS – VISITOR EXPERIENCE OF EXISTING CONDITIONS

SF Civic Design Review Design Development Submittal 11/06/20





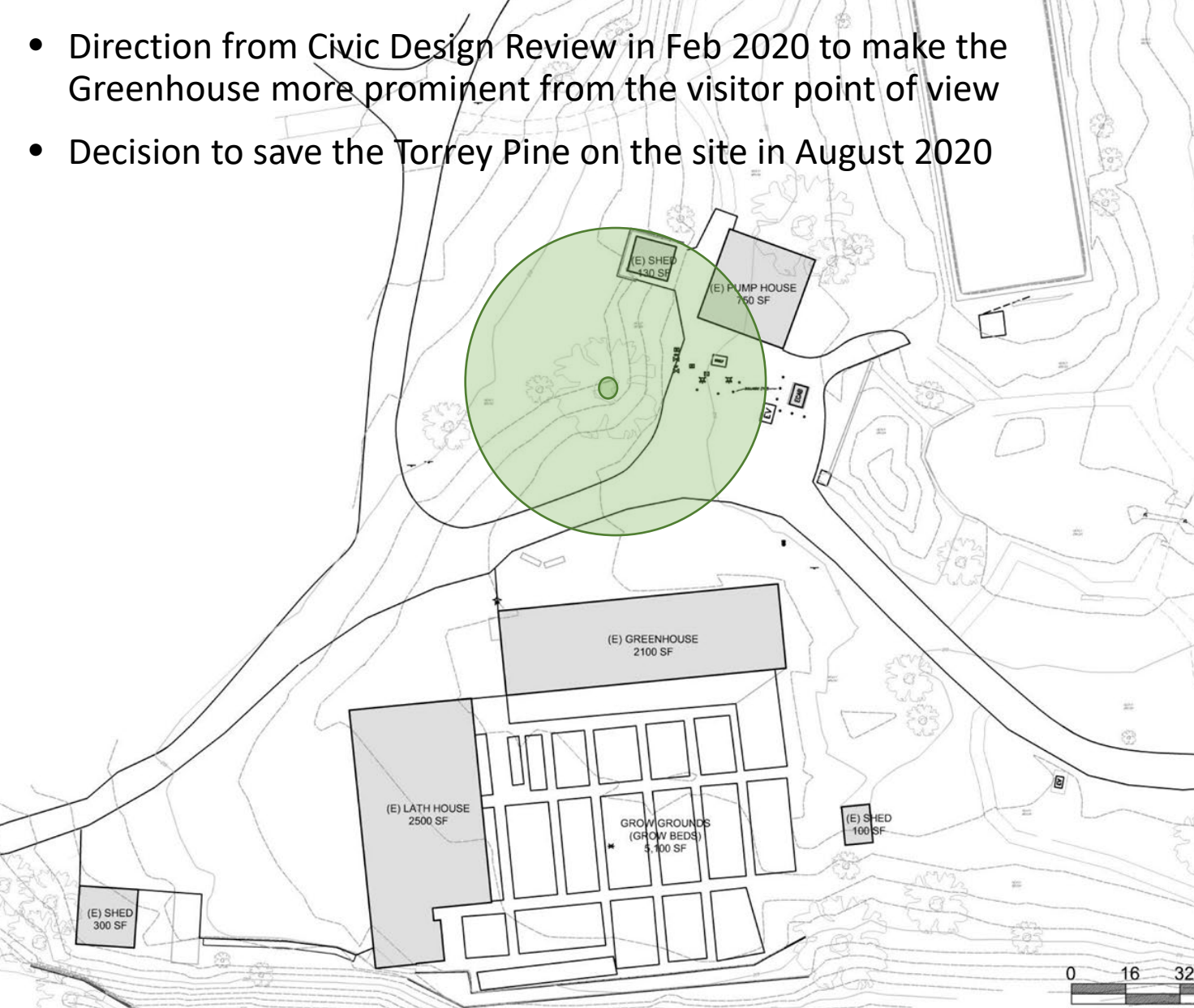


DESIGN DRIVERS – TOPOGRAPHY

SF Civic Design Review Design Development Submittal 11/06/20

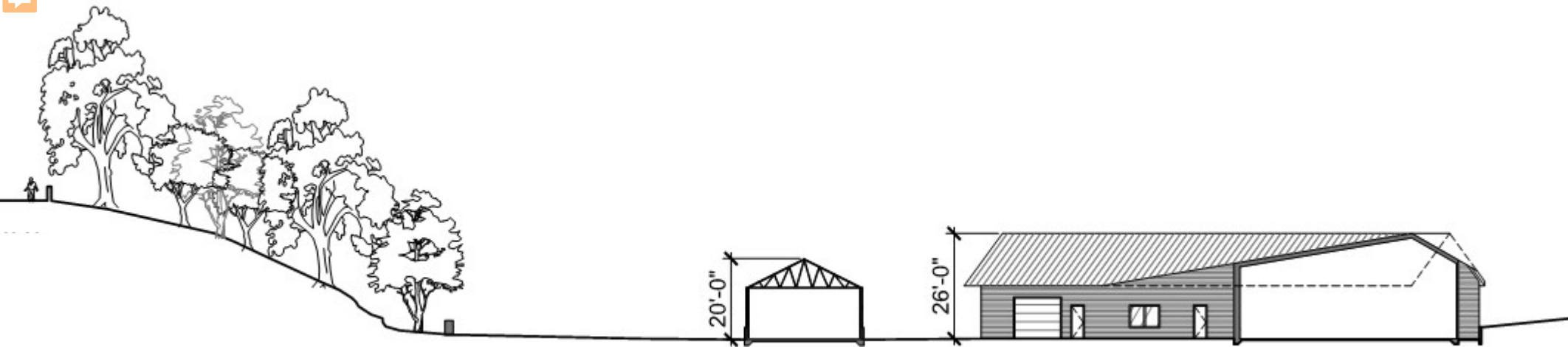


- Direction from Civic Design Review in Feb 2020 to make the Greenhouse more prominent from the visitor point of view
- Decision to save the Torrey Pine on the site in August 2020







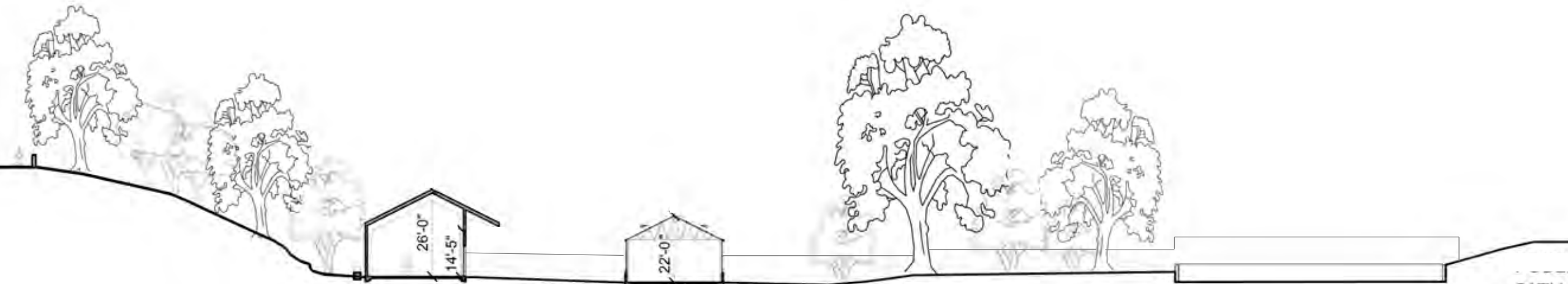


PREVIOUS – FEB 2020

GROW GROUNDS

GREENHOUSE

HEADHOUSE



REVISED – NOV 2020

HEADHOUSE

GREENHOUSE

TORREY PINE

GROW GROUNDS

PATH

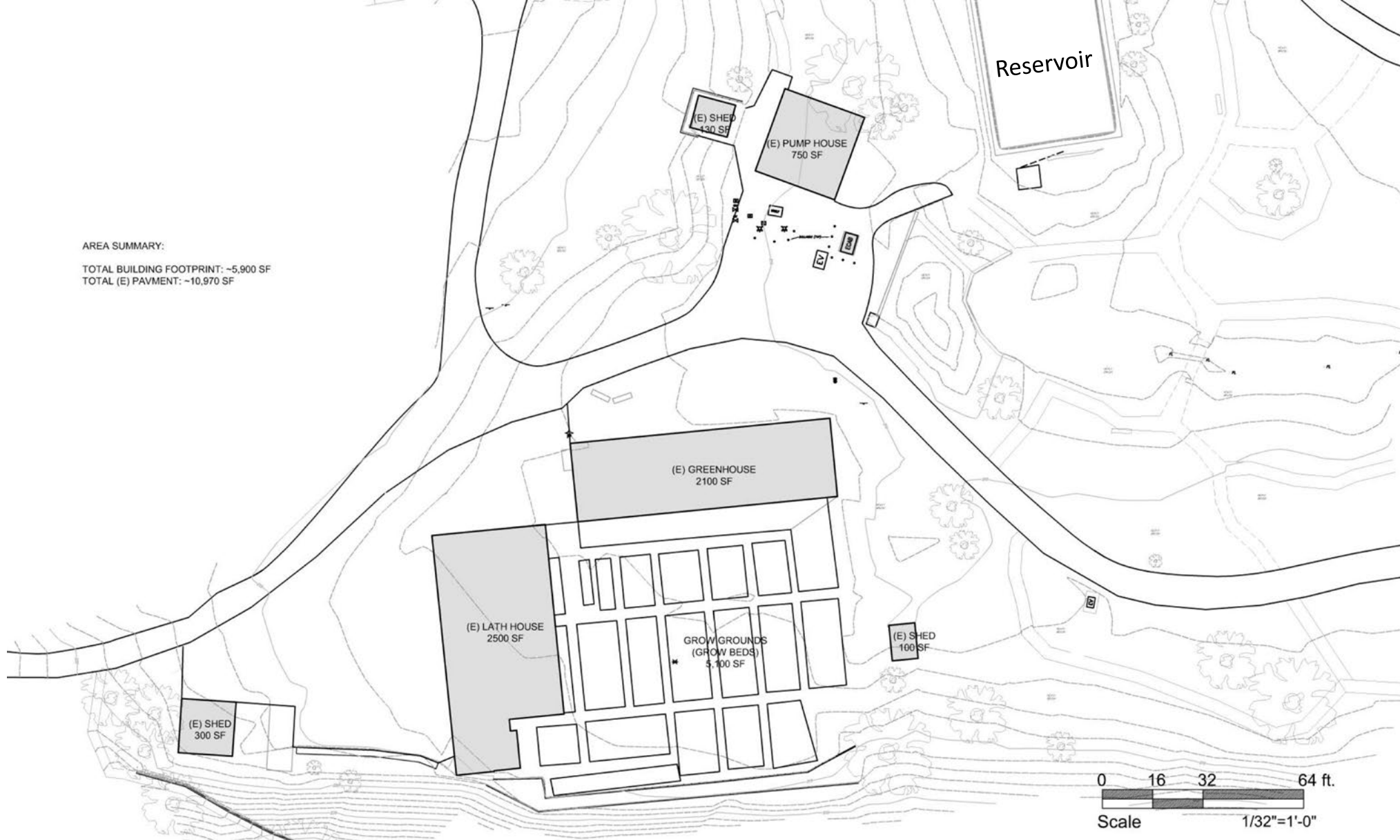
SIEGEL & STRAIN Architects

BAY TREE DESIGN INC.

SITE SECTIONS

SF Civic Design Review Design Development Submittal 11/06/20







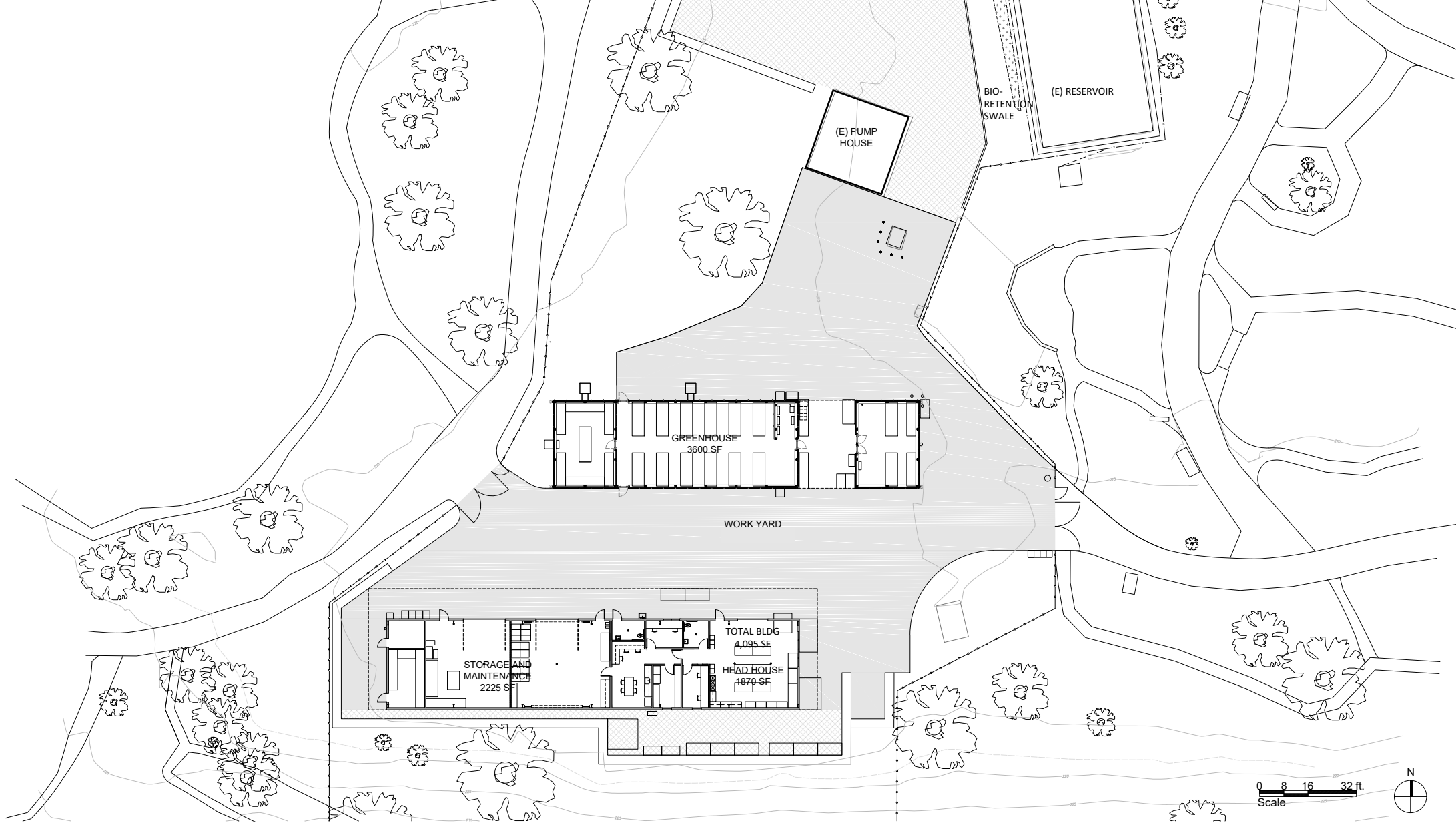
SIEGEL & STRAIN Architects

BAY TREE DESIGN INC.

EXISTING SITE PLAN COMPARED TO PROPOSED

SF Civic Design Review Design Development Submittal 11/06/20





PROPOSED SITE PLAN

SF Civic Design Review Design Development Submittal 11/06/20



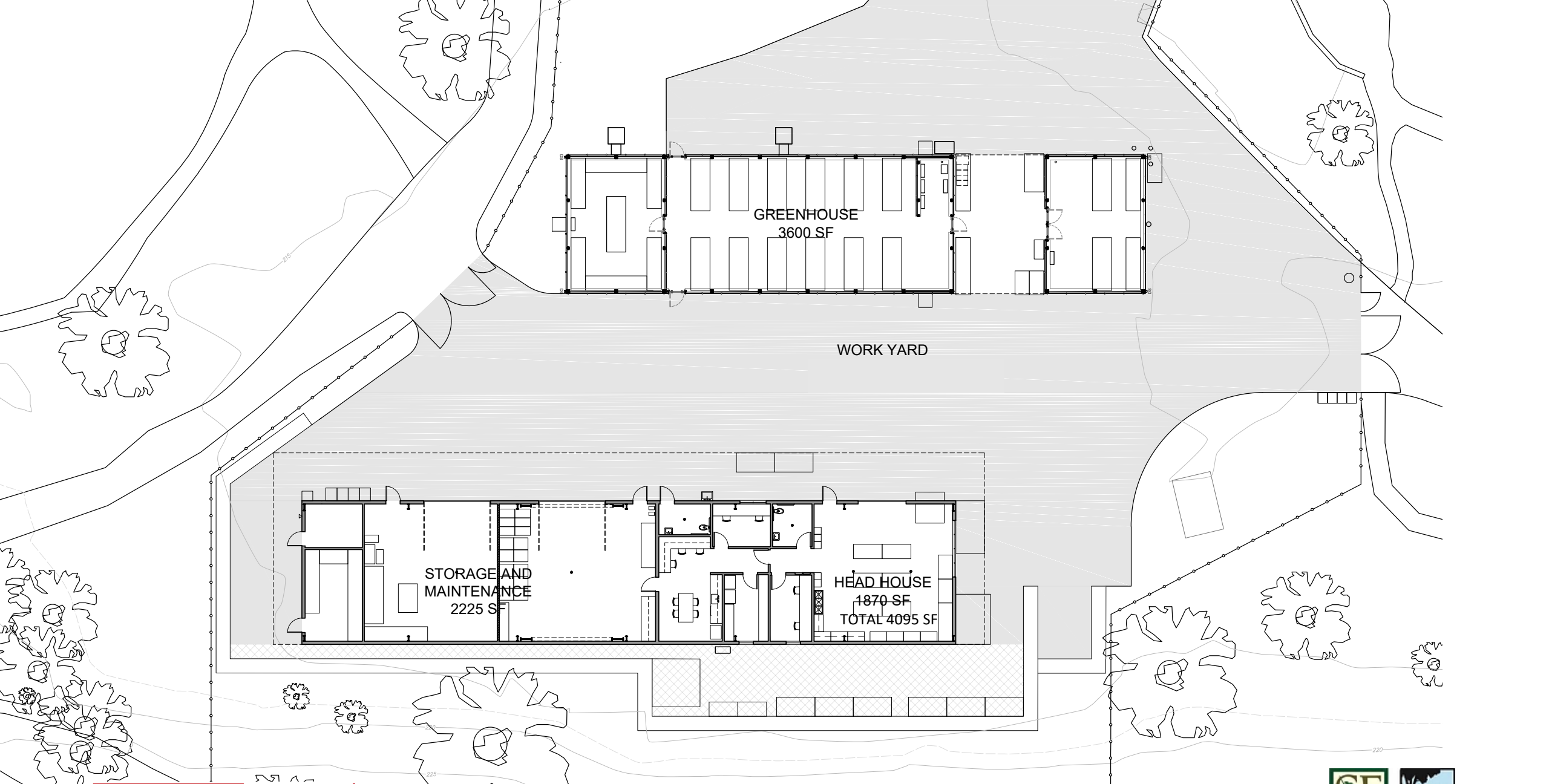
SIEGEL & STRAIN Architects

BAY TREE DESIGN INC.

AERIAL VIEW FROM EAST

SF Civic Design Review Design Development Submittal 11/06/20





GREENHOUSE
3600 SF

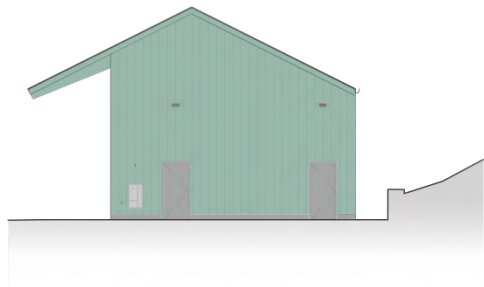
WORK YARD

STORAGE AND
MAINTENANCE
2225 SF

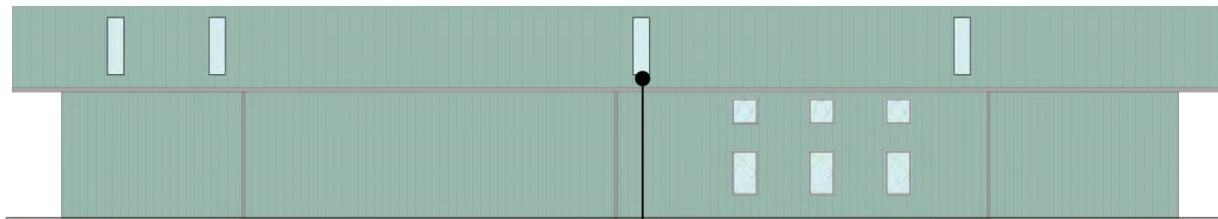
HEAD HOUSE
1870 SF
TOTAL 4095 SF

WORK YARD & FLOOR PLANS





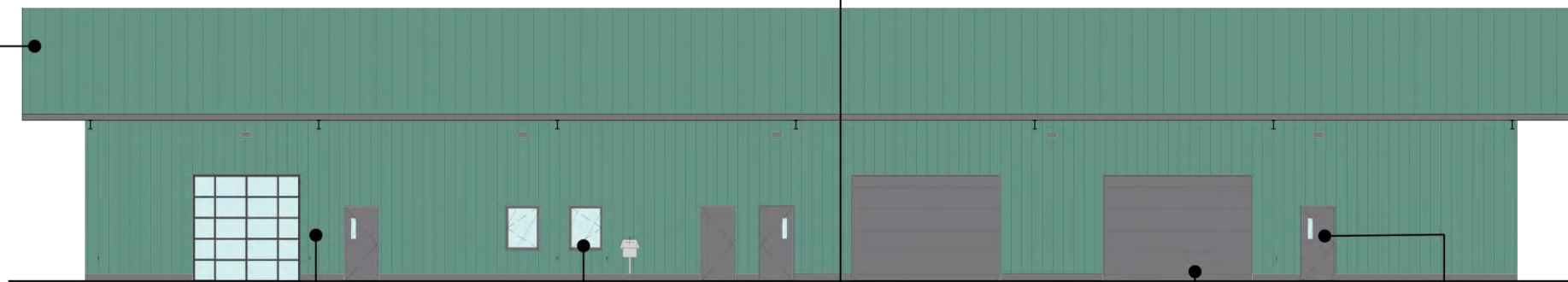
HEADHOUSE WEST ELEVATION



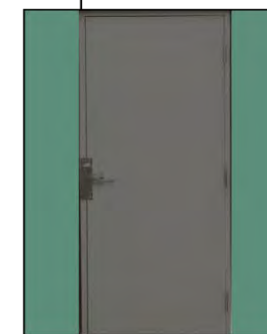
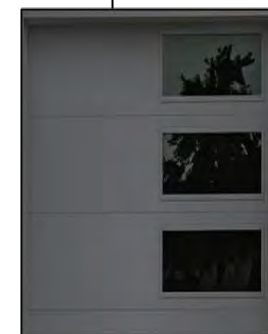
HEADHOUSE SOUTH ELEVATION



HEADHOUSE EAST ELEVATION



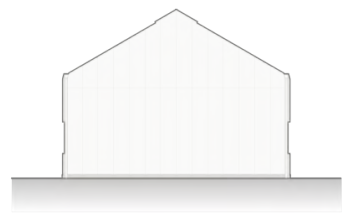
HEADHOUSE NORTH ELEVATION



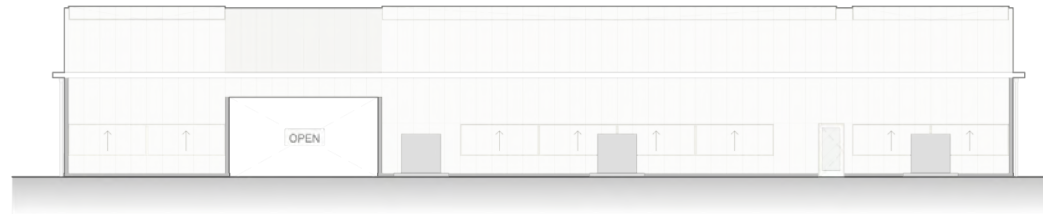


PRE-ENGINEERED METAL BUILDING
SF Civic Design Review Design Development Submittal 11/06/20

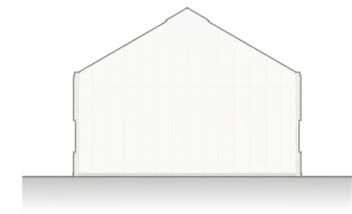




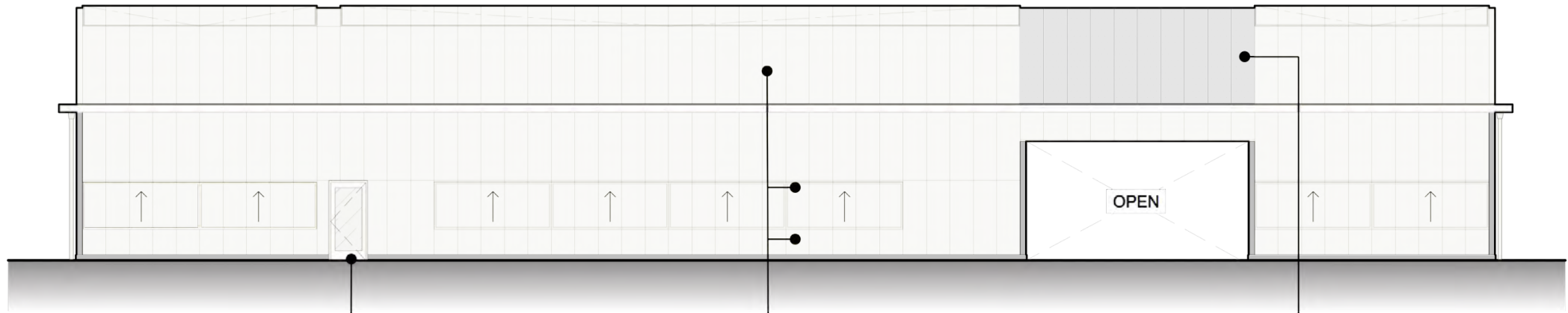
GREENHOUSE WEST ELEVATION



GREENHOUSE NORTH ELEVATION



GREENHOUSE EAST ELEVATION



GREENHOUSE SOUTH ELEVATION

0 4 8 16 ft.
Scale



SWINGING DOORS: METAL FULL-LITE,
INSULATED TEMPERED GLAZING,
VAN WINGARDEN, COLOR: WHITE



WALL PANELS, ROOF, VENTS:
THERMOPLASTIC, SELECTOGAL RFX,
POLYGLAZ, COLOR: CLEAR



WALL PANELS, ROOF: THERMOPLASTIC,
POLYGLAZ, COLOR: ICE



GREENHOUSE



Comarostaphylis diversifolia,
Summer Holly



Carex spissa,
San Diego Sedge



Carex praegracilis,
California Field Sedge



Juncus patens,
California Gray Rush



Quercus chrysolepis,
Canyon Live Oak



Salvia spathacea,
Hummingbird Sage



Diplacus aurantiacus,
Sticky Monkey-Flower



Lyonothamnus floribundus,
Catalina Ironwood

SIEGEL & STRAIN Architects

BAY TREE DESIGN INC.

VIEW FROM EAST AND PLANT PALETTE

SF Civic Design Review Design Development Submittal 11/06/20





Ceanothus thyrsiflorus
Blue Blossom Ceanothus



Heuchera maxima,
Island Allium Root



Frangula californica
California Coffeeberry



Fascicularia bicolor,
Sun Bromeliad



Polystichum munitum,
Western Swordfern



Woodwardia fimbriata,
Giant Chain fern



Morella californica,
California Wax Myrtle



Acer circinatum,
Vine Maple

SIEGEL & STRAIN Architects

BAY TREE DESIGN INC.

VIEW FROM WEST AND PLANT PALETTE

SF Civic Design Review Design Development Submittal 11/06/20





METAL WORK TABLES



REDWOOD PICNIC TABLES



LAMP POSTS



MSE RETAINING WALLS



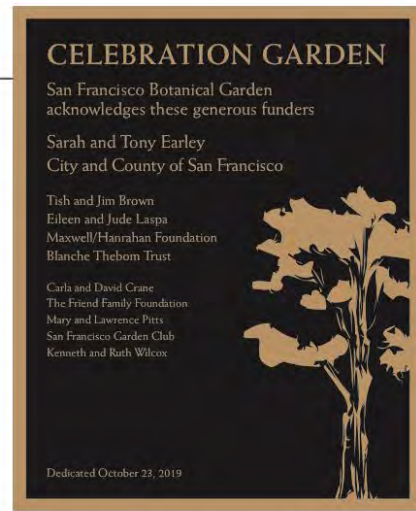
ASPHALT PAVING



ARBOR MULCH



METAL FENCES & GATES



CELEBRATION GARDEN PLAQUE



SIEGEL & STRAIN Architects

BAY TREE DESIGN INC.

VIEW FROM EAST

SF Civic Design Review Design Development Submittal 11/06/20





VIEW FROM WEST

SF Civic Design Review Design Development Submittal 11/06/20



AERIAL VIEW FROM EAST
SF Civic Design Review Design Development Submittal 11/06/20



THANK YOU