

Background

This project includes a temporary installation in Golden Gate Park for the 150th Anniversary Celebration to enhance the performance experience at the Spreckels Temple of Music on the western side of the Music Concourse. The installation includes replacing the existing wooden stage risers and adding a temporary stage extension to the front of the stage. This installation will also break down barriers to perform in the Music Concourse by providing typical performance accoutrements: speakers and lighting. Since there is not an existing sound system or lighting in place, most performers bring their own.

This installation will better support a wide range of day and evening live performances, from music and dance to theater and spoken word.

“HOPE WILL NEVER BE SILENT” INSTALLATION

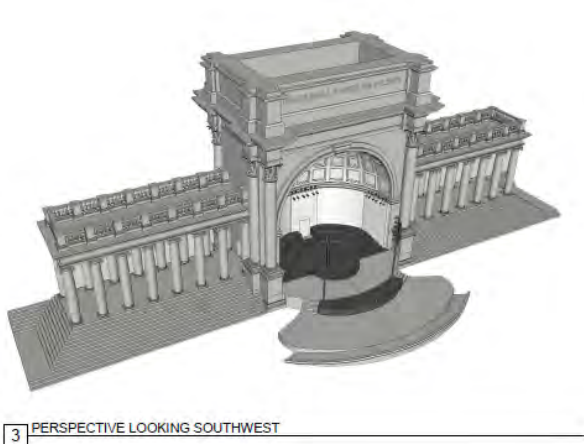
The temporary installation will also include the addition of Harvey Milk’s words HOPE WILL NEVER BE SILENT along the top center of the structure. The design of the typographic statement is inspired by the still-visible historic environmental graphics in the Music Concourse. A variety of typographic styles are literally carved in stone nearby, as there was much excitement for new type designs to welcome the arrival of the twentieth century. To be modern in 1900, when the Temple was built, was to eliminate the serifs from letterforms, and thus be “sans serif.” The typeface in which HOPE WILL NEVER BE SILENT is set is Caslon’s Egyptian, the first known commercially produced sans serif typeface. The geometry of its letterforms reflects the architectural elements of the Temple - the perfectly round O echoes the dome while the heavy verticals parallel the succession of columns. The weight of the letters allows the words to command the space yet retain an elegance that befits the Temple.

These 21 letters will be affixed using a grout-mounting technique that is easily patched upon removal. This approach, as well as the stage installation techniques outlined above, allow the temporary stage and uplifting quote from San Francisco’s human rights leader to be secured without requiring any significant modification to the existing structure. The installation method of the letters was developed based on advice from both preservation staff from the Planning Department and ARG. The installation will include a skilled mason, provided by ARG.

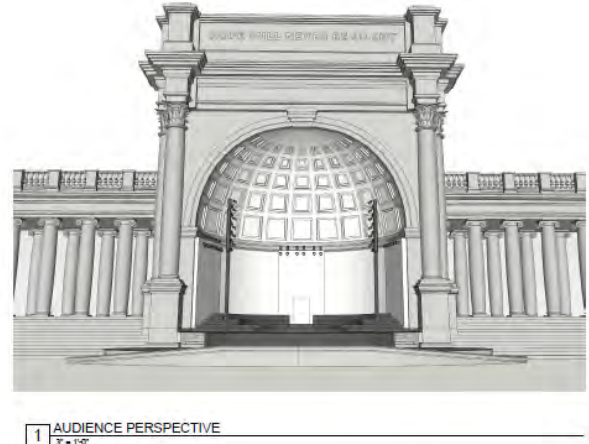




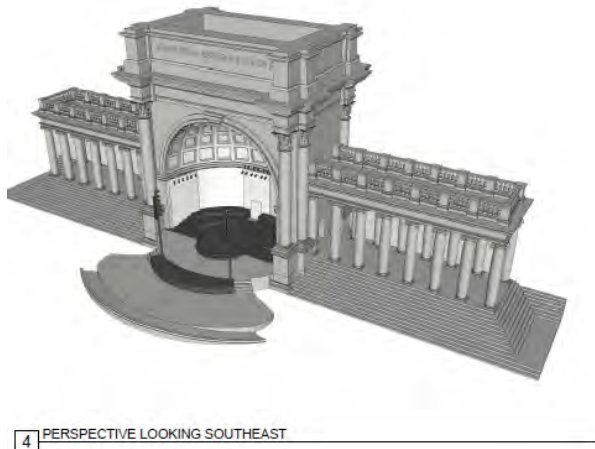
Figure 9: Rendering of bandshell installation



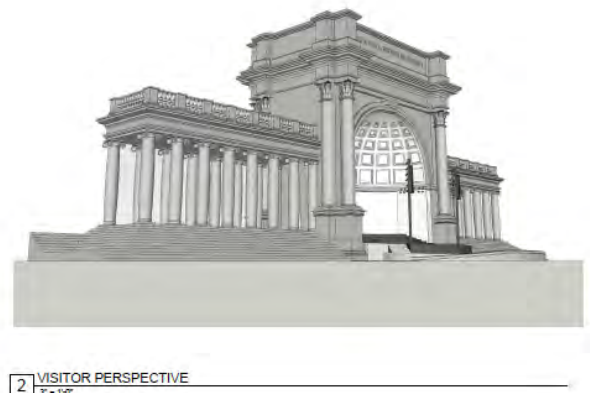
3 PERSPECTIVE LOOKING SOUTHWEST



1 AUDIENCE PERSPECTIVE
2'-10"



4 PERSPECTIVE LOOKING SOUTHEAST



2 VISITOR PERSPECTIVE
2'-10"

Figure 10: Renderings of bandshell installation perspectives