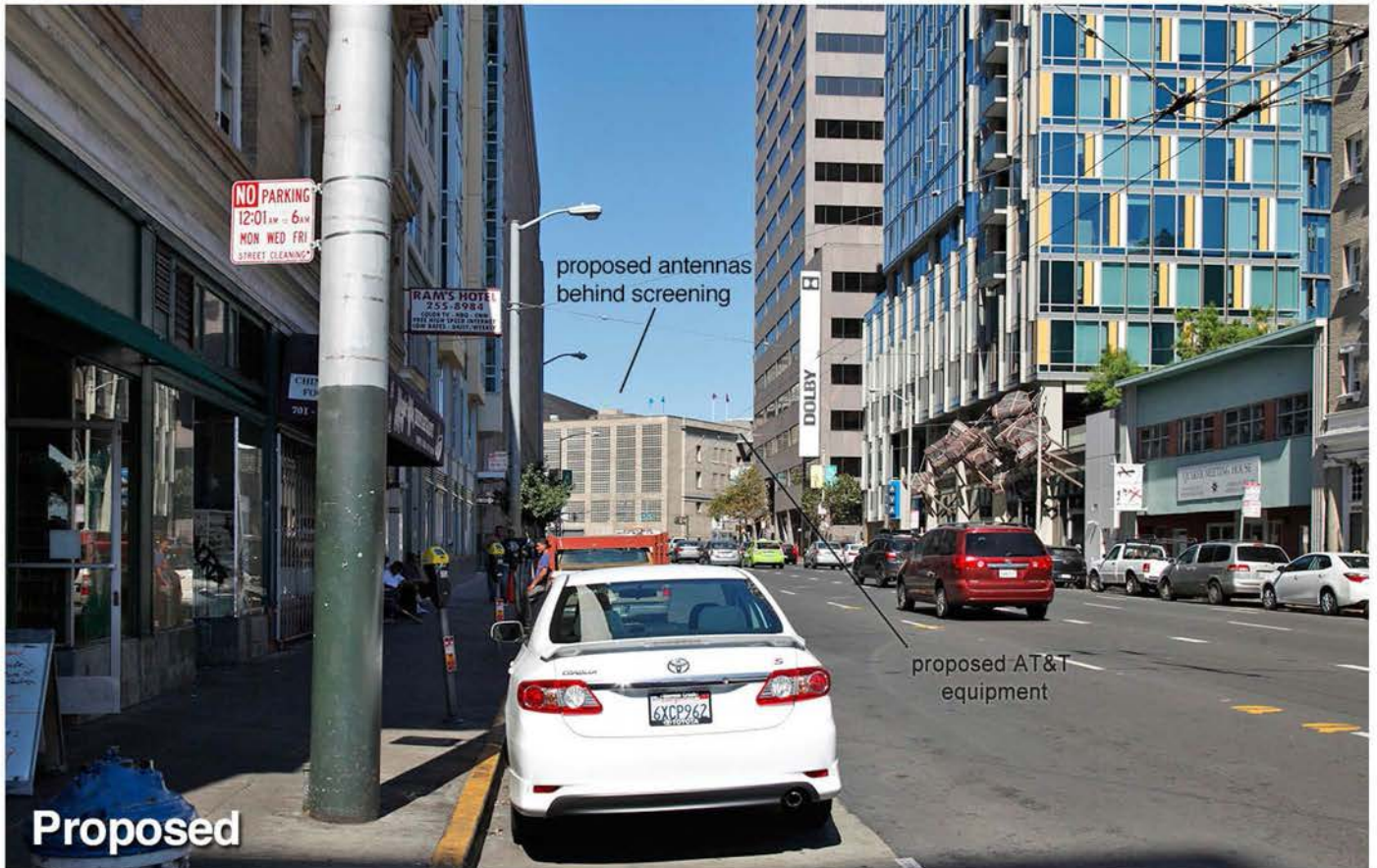


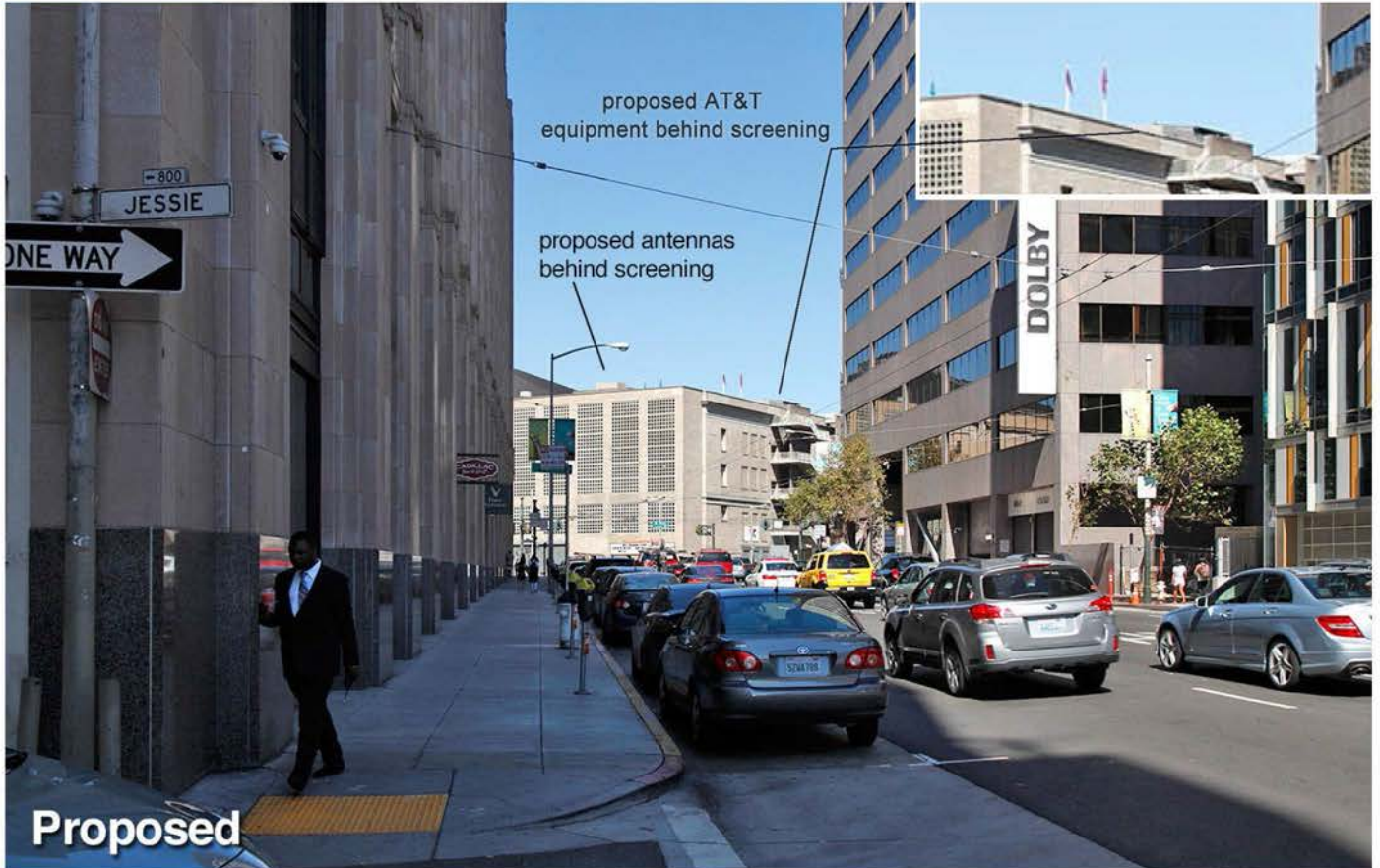
Existing



Proposed



Existing



Proposed

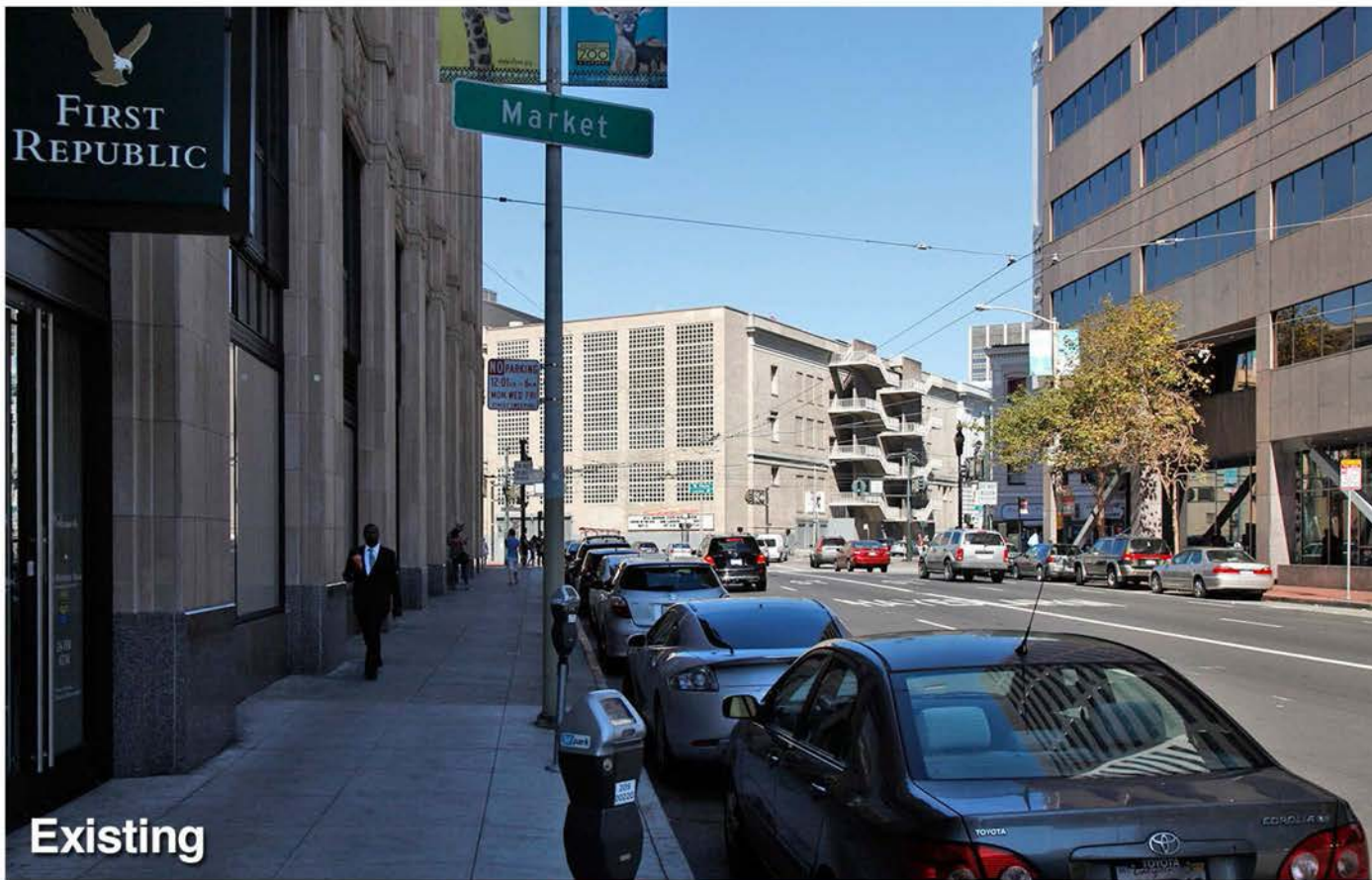


SF Grove Street
 99 Grove Street
 San Francisco, CA 94102

Verizon Site# 320462
 AT&T Site # CCU2159

Looking Northwest from 9th Street

View #2
 Shore 2 Shore Wireless Inc. 10/01/2015



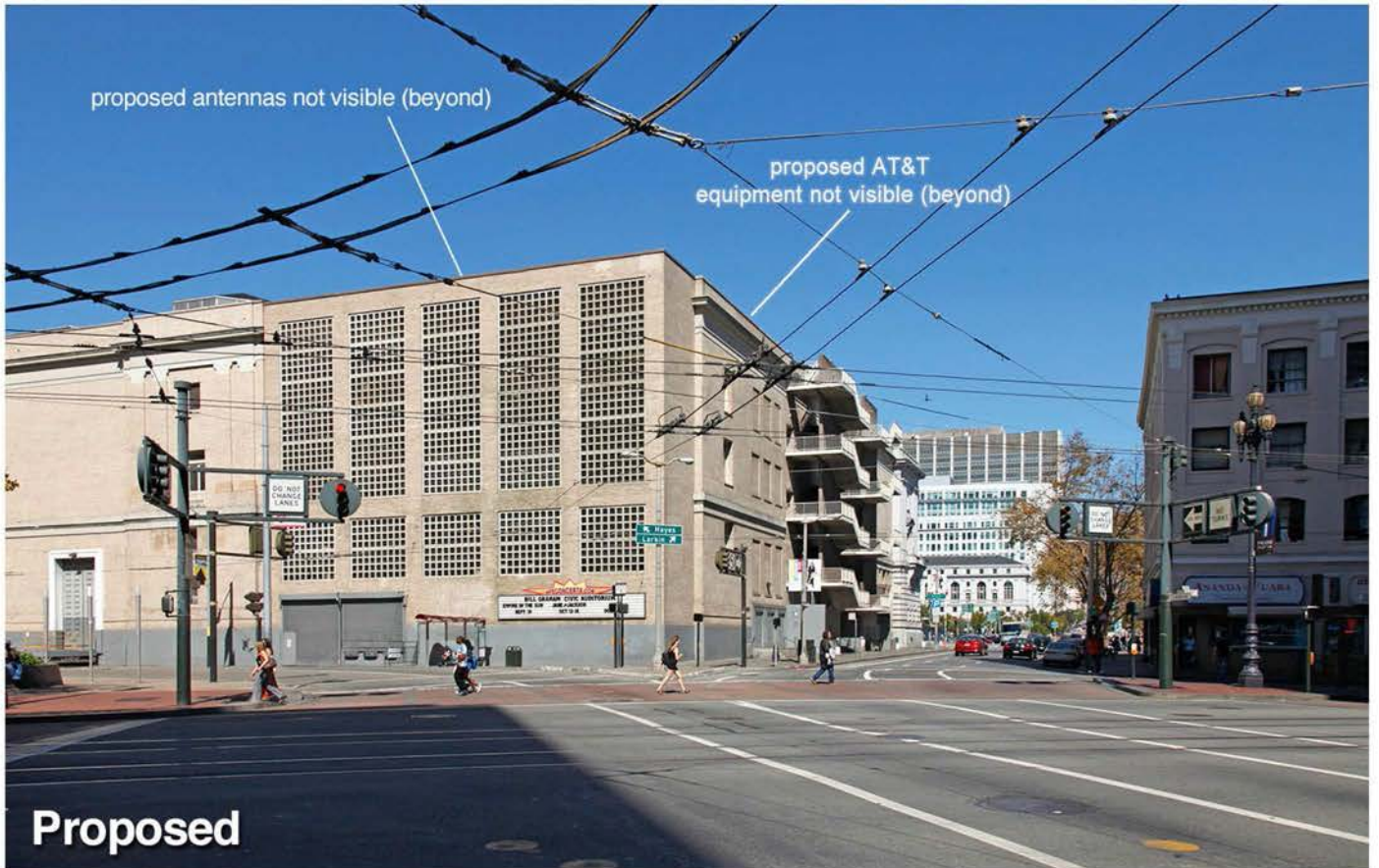
Existing



Proposed



Existing



Proposed



SF Grove Street
99 Grove Street
San Francisco, CA 94102

Verizon Site# 320462
AT&T Site # CCU2159

Looking Northwest from 9th Street

View #4
Shore 2 Shore Wireless Inc. 10/01/2015



Existing



Proposed

proposed antennas
proposed AT&T equipment



SF Grove Street
99 Grove Street
San Francisco, CA 94102

Verizon Site# 320462
AT&T Site # CCU2159

Looking Northwest from 9th Street

View #5
Shore 2 Shore Wireless Inc. 10/01/2015



Existing



Proposed

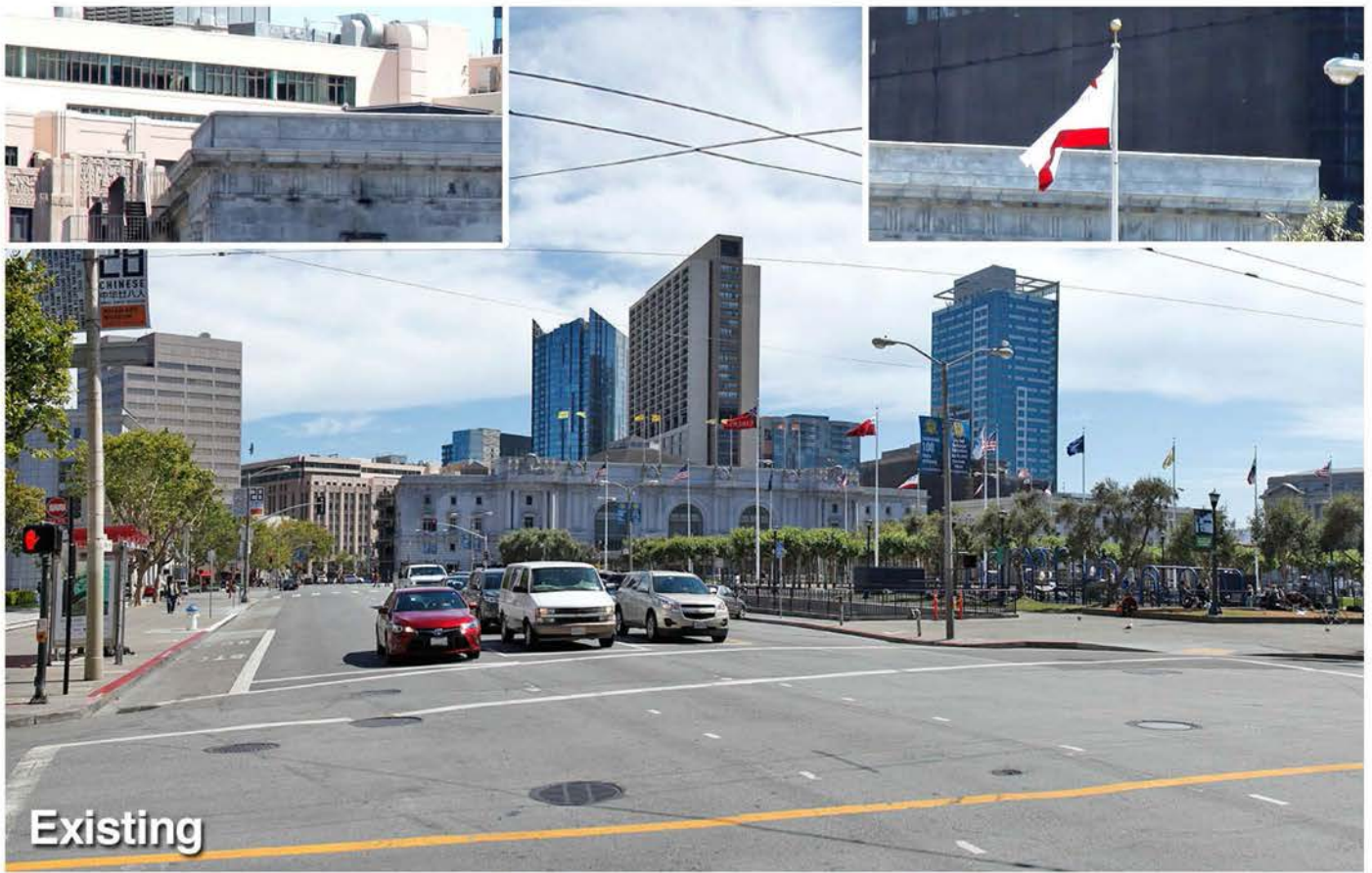


SF Grove Street
 99 Grove Street
 San Francisco, CA 94102

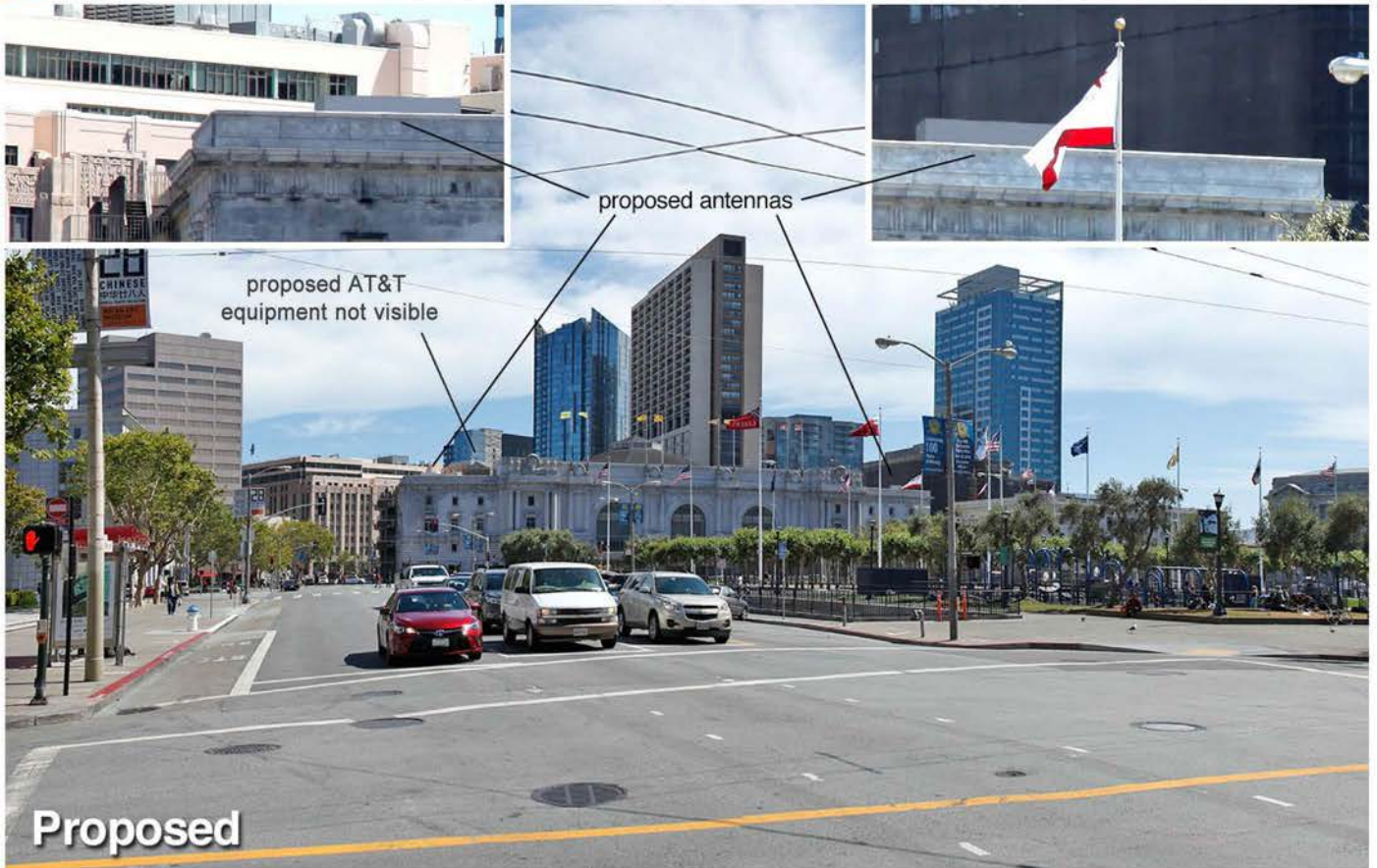
Verizon Site# 320462
 AT&T Site # CCU2159

Looking East from Van Ness Avenue

View #6
 Shore 2 Shore Wireless Inc. 10/01/2015



Existing



Proposed



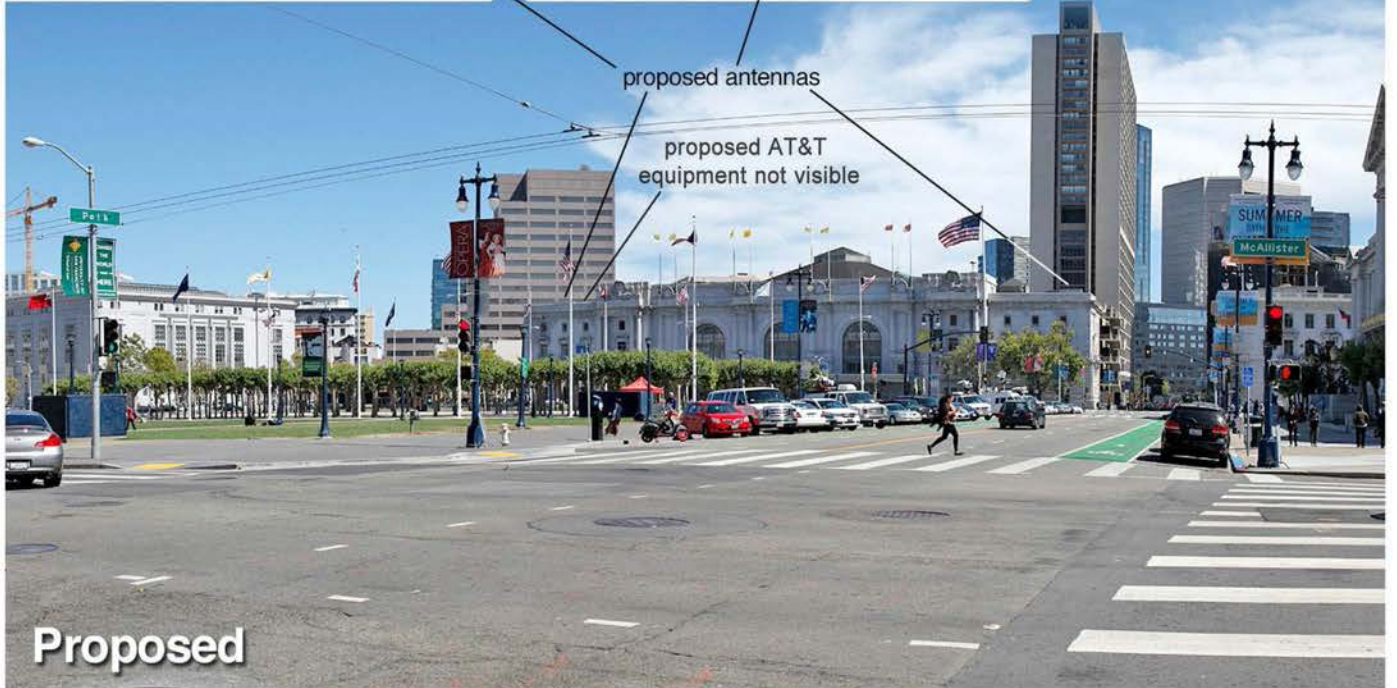
SF Grove Street
 99 Grove Street
 San Francisco, CA 94102

Verizon Site# 320462 Looking South from McAllister & Larkin Street
 AT&T Site # CCU2159

View #7
 Shore 2 Shore Wireless Inc. 10/01/2015



Existing



Proposed



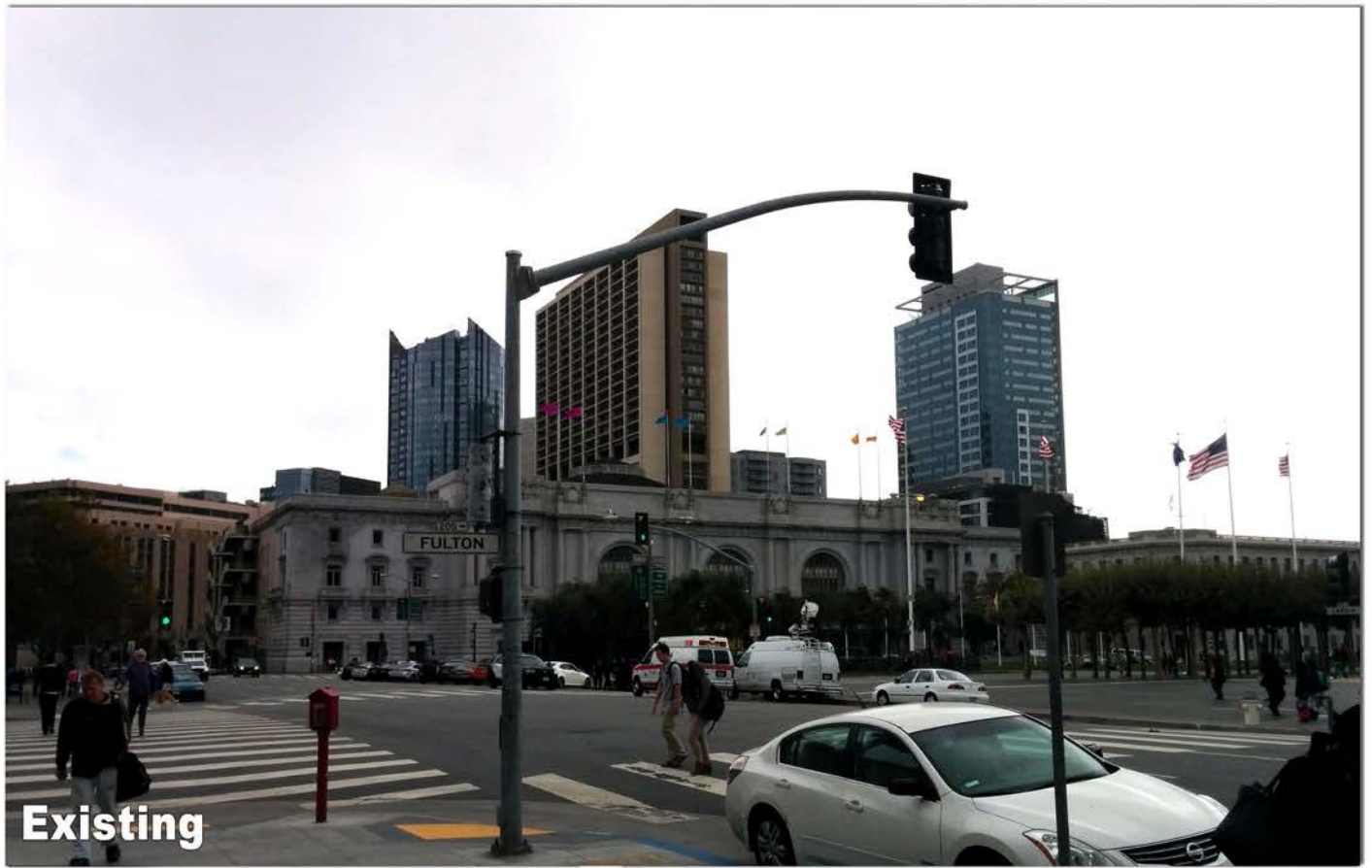
SF Grove Street
99 Grove Street
San Francisco, CA 94102

Verizon Site# 320462
AT&T Site # CCU2159

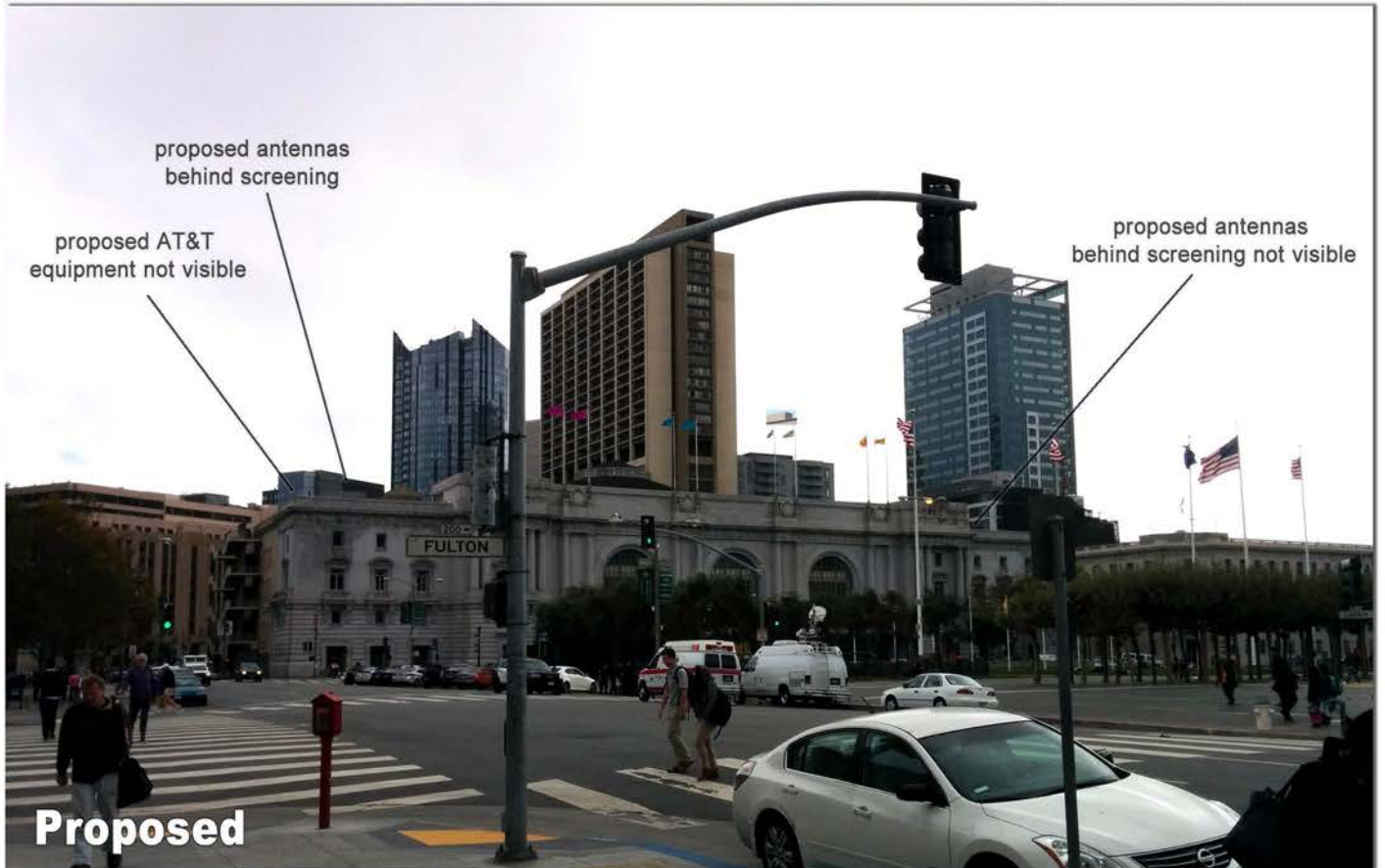
Looking South from McAllister & Polk Street

View #8

Shore 2 Shore Wireless Inc. 10/01/2015



Existing



Proposed

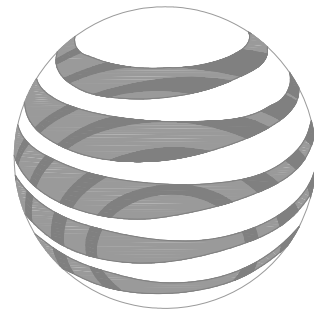


SF Grove Street
99 Grove Street
San Francisco, CA 94102

Verizon Site# 320462
AT&T Site # CCU2159

Looking West from Larken St @ Fulton St

View #9
Shore 2 Shore Wireless Inc. 10/01/2015



at&t

BILL GRAHAM CIVIC AUDITORIUM
99 GROVE ST
SAN FRANCISCO, CA 94102
CCU2159

BILL GRAHAM CIVIC AUDITORIUM

CCU2159
 99 GROVE ST
 SAN FRANCISCO, CA 94102

ISSUE STATUS

Δ	DATE	DESCRIPTION	BY
	10/17/15	ZD 90%	C.C.
	10/29/15	ZD 95%	C.C.
	11/05/15	ZD 100%	C.C.
	-	-	-
	-	-	-
	-	-	-

DRAWN BY: C. CODY
 CHECKED BY: L. HOUGHTBY
 APPROVED BY: -
 DATE: 11/05/15

Streamline Engineering and Design, Inc.
 8445 Sierra College Blvd, Suite E Granite Bay, CA 95746
 Contact: Larry Houghtby Phone: 916-275-4180
 E-Mail: larry@streamlineeng.com Fax: 916-660-1941
THESE PLANS AND SPECIFICATIONS ARE INSTRUMENTS OF SERVICE AND SHALL REMAIN THE PROPERTY OF STREAMLINE ENGINEERING AND DESIGN, INC. WHETHER THE PROJECTS FOR WHICH THEY ARE MADE ARE EXECUTED OR NOT. THESE INSTRUMENTS OF SERVICE SHALL NOT BE REPRODUCED, COPIED, REPRODUCED, OR TRANSMITTED IN ANY FORM OR BY ANY MEANS, ELECTRONIC OR MECHANICAL, INCLUDING PHOTOCOPYING, RECORDING, OR BY ANY INFORMATION STORAGE AND RETRIEVAL SYSTEM, WITHOUT THE WRITTEN CONSENT OF THE ENGINEER. COPYRIGHT © 2008, STREAMLINE ENGINEERING AND DESIGN, INC. ALL RIGHTS RESERVED.

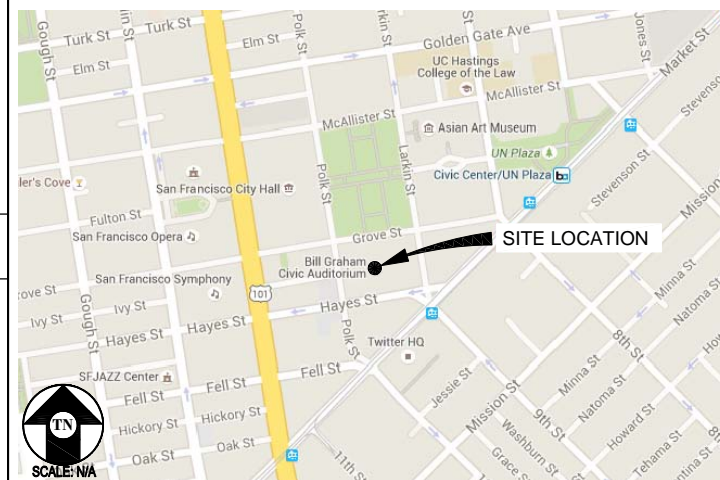
PROJECT DESCRIPTION

- A (P) AT&T UNMANNED TELECOMMUNICATION FACILITY CONSISTING OF INSTALLING:
- (14) (P) ANTENNAS
 - (23) (P) & (37) (F) RRU UNITS (60 TOTAL)
 - (7) (P) & (7) (F) A2 MODULES (14 TOTAL)
 - (P) AT&T 12'-0"X10'-0" (120 SQ FT) STEEL EQUIPMENT PLATFORM/LEASE AREA LOCATED ON ROOF
 - (2) (P) GPS ANTENNAS
 - (4) (P) INNERDUCTS W/ (P) FIBER & DC CABLES
 - (4) (P) STEALTH BOX ENCLOSURES

PROJECT INFORMATION

SITE NAME:	BILL GRAHAM CIVIC AUDITORIUM	SITE #:	CCU2159
COUNTY:	SAN FRANCISCO	JURISDICTION:	CITY & COUNTY OF SAN FRANCISCO
BLOCK/LOT:	0812-001	POWER:	PG&E
SITE ADDRESS:	99 GROVE ST SAN FRANCISCO, CA 94102	TELEPHONE:	AT&T
CURRENT ZONING:	P-PUBLIC		
CONSTRUCTION TYPE:	V-B		
OCCUPANCY TYPE:	U, (UNMANNED COMMUNICATIONS FACILITY)		
HEIGHT/BULK:	80-X		
PROPERTY OWNER:	CITY OF SAN FRANCISCO 25 VAN NESS AVE SAN FRANCISCO, CA 94102		
APPLICANT:	AT&T 5001 EXECUTIVE PKWY, 4W550H SAN RAMON, CA 94583		
LEASING CONTACT:	SHORE 2 SHORE WIRELESS INC ATTN: CHRIS HATCH (916) 259-2590		
ZONING CONTACT:	SHORE 2 SHORE WIRELESS INC ATTN: CHRIS HATCH (916) 259-2590		
CONSTRUCTION CONTACT:	ATTN: MAJID MORADI (415) 696-9400		
LATITUDE:	N 37° 46' 41.26" NAD 83		
LONGITUDE:	W 122° 25' 00.46" NAD 83		
AMSL:	±61.1'		

VICINITY MAP



DRIVING DIRECTIONS

FROM: 5001 EXECUTIVE PKWY, 4W550H, SAN RAMON, CA 94583
 TO: 99 GROVE ST, SAN FRANCISCO, CA 94102

1. START OUT GOING SOUTHEAST ON CAMINO RAMON TOWARD BISHOP DR. 0.4 MI
2. TAKE THE 2ND RIGHT ONTO BOLLINGER CANYON RD. 0.4 MI
3. MERGE ONTO I-680 N TOWARD SACRAMENTO. 10.9 MI
4. MERGE ONTO CA-24 W VIA EXIT 46A TOWARD OAKLAND / LAFAYETTE. 13.4 MI
5. TAKE EXIT 2B TOWARD I-580 / SAN FRANCISCO / HAYWARD. 0.3 MI
6. MERGE ONTO I-580 W. 1.2 MI
7. MERGE ONTO I-80 W VIA EXIT 19A ON THE LEFT (PORTIONS TOLL). 7.9 MI
8. TAKE EXIT 1C TOWARD CIVIC CENTER / 9TH ST. 0.2 MI
9. MERGE ONTO HARRISON ST. 0.1 MI
10. TAKE THE 2ND RIGHT ONTO 9TH ST. 0.5 MI
11. TURN SLIGHT RIGHT ONTO LARKIN ST. 0.08 MI
12. TURN LEFT ONTO GROVE ST. 0.09 MI

END AT: 99 GROVE ST, SAN FRANCISCO, CA 94102
 ESTIMATED TIME: 38 MINUTES ESTIMATED DISTANCE: 35.48 MILES

CODE COMPLIANCE

ALL WORK & MATERIALS SHALL BE PERFORMED & INSTALLED IN ACCORDANCE WITH THE CURRENT EDITIONS OF THE FOLLOWING CODES AS ADOPTED BY THE LOCAL GOVERNING AUTHORITIES. NOTHING IN THESE PLANS IS TO BE CONSTRUED TO PERMIT WORK NOT CONFORMING TO THESE CODES:

2013 CALIFORNIA ADMINISTRATIVE CODE, PART 1, TITLE 24 C.C.R.
 2013 CALIFORNIA BUILDING CODE (CBC), PART 2, TITLE 24 C.C.R.
 (2012 INTERNATIONAL BUILDING CODE VOLUMES 1-2 AND 2013 CALIFORNIA AMENDMENTS)

2013 CALIFORNIA ELECTRICAL CODE (CEC), PART 3, TITLE 24 C.C.R.
 (2011 NATIONAL ELECTRICAL CODE AND 2013 CALIFORNIA AMENDMENTS)

2013 CALIFORNIA MECHANICAL CODE (CMC) PART 4, TITLE 24 C.C.R.
 (2012 UNIFORM MECHANICAL CODE AND 2013 CALIFORNIA AMENDMENTS)

2013 CALIFORNIA PLUMBING CODE (CPC), PART 5, TITLE 24 C.C.R.
 (2012 UNIFORM PLUMBING CODE AND 2013 CALIFORNIA AMENDMENTS)

2013 CALIFORNIA ENERGY CODE (CEC), PART 6, TITLE 24 C.C.R.
 2013 CITY OF SAN FRANCISCO FIRE CODE
 (2012 INTERNATIONAL FIRE CODE AND 2013 CALIFORNIA AMENDMENTS)

2013 CALIFORNIA GREEN BUILDING STANDARDS CODE, PART 11, TITLE 24 C.C.R.
 2013 CALIFORNIA REFERENCED STANDARDS, PART 12, TITLE 24 C.C.R.
 ANSI/EIA-TIA-222-G

ALONG WITH ANY OTHER APPLICABLE LOCAL & STATE LAWS AND REGULATIONS

DISABLED ACCESS REQUIREMENTS

THIS FACILITY IS UNMANNED & NOT FOR HUMAN HABITATION. DISABLED ACCESS & REQUIREMENTS ARE NOT REQUIRED IN ACCORDANCE WITH CALIFORNIA STATE BUILDING CODE, TITLE 24 PART 2, SECTION 11B-203.4

SHEET INDEX

SHEET	DESCRIPTION	REV
T-1	TITLE SHEET	-
A-1	SITE PLAN	-
A-2	EQUIPMENT PLAN & DETAILS	-
A-3	ANTENNA PLANS	-
A-4	ANTENNA PLANS	-
A-5	ELEVATIONS	-
A-6	ELEVATIONS	-
A-7	DETAILS	-

APPROVAL

RF
LEASING
ZONING
CONSTRUCTION
AT&T

**PRELIMINARY:
NOT FOR
CONSTRUCTION**

KEVIN R. SORENSEN
S4469

at&t



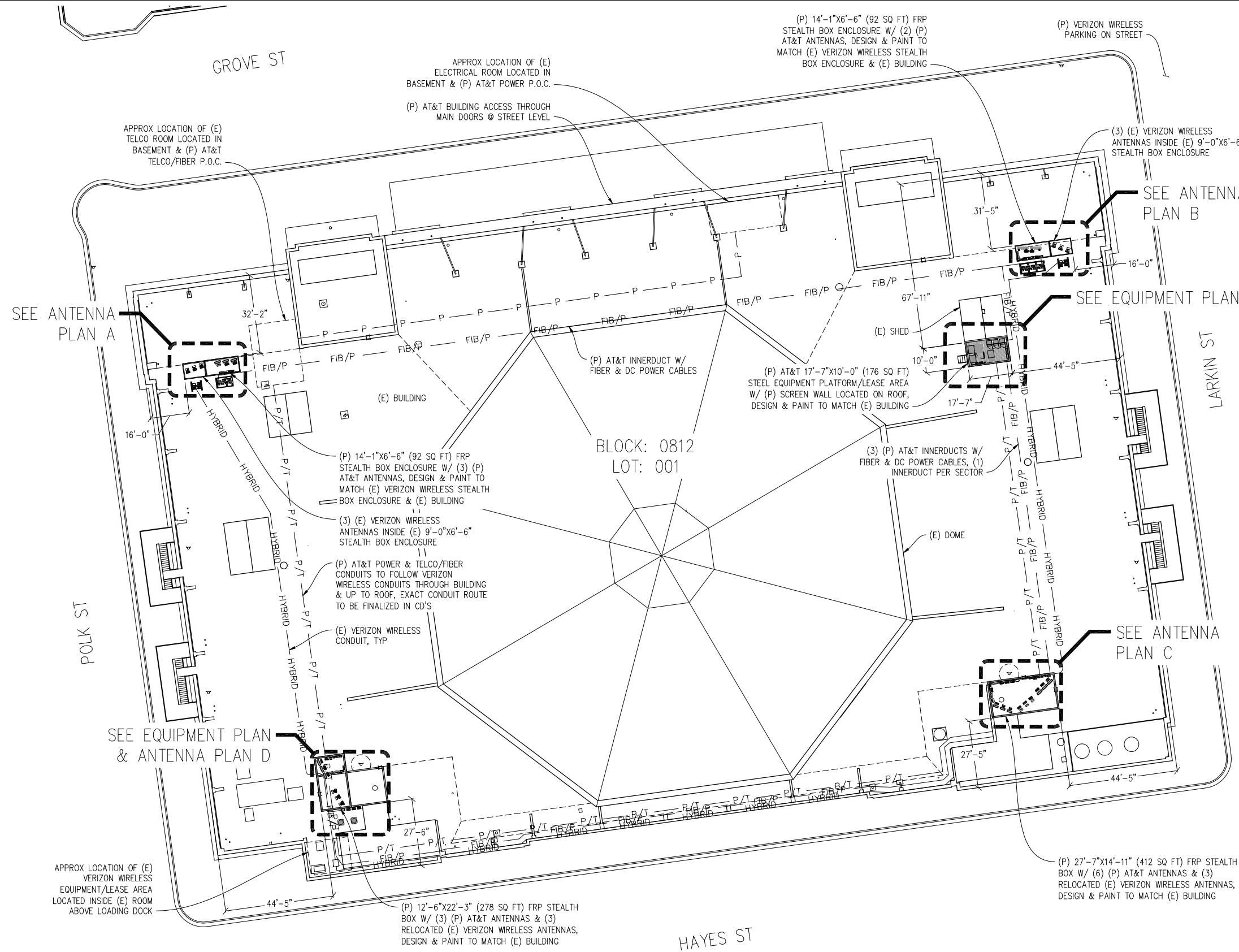
5001 EXECUTIVE PKWY, 4W550H
SAN RAMON, CA 94583

SHEET TITLE:

TITLE

SHEET NUMBER:

T-1



**BILL GRAHAM
CIVIC
AUDITORIUM**

CCU2159
99 GROVE ST
SAN FRANCISCO, CA 94102

ISSUE STATUS

Δ	DATE	DESCRIPTION	BY
	10/17/15	ZD 90%	C.C.
	10/29/15	ZD 95%	C.C.
	11/05/15	ZD 100%	C.C.
	-	-	-
	-	-	-

DRAWN BY: C. CODY
CHECKED BY: L. HOUGHTBY
APPROVED BY: -
DATE: 11/05/15

Streamline Engineering
and Design, Inc.

8445 Sierra College Blvd, Suite E Granite Bay, CA 95746
Contact: Larry Houghtby Phone: 916-275-4180
E-Mail: larry@streamlineeng.com Fax: 916-660-1941

THESE PLANS AND SPECIFICATIONS ARE INSTRUMENTS OF SERVICE AND SHALL REMAIN THE PROPERTY OF STREAMLINE ENGINEERING AND DESIGN, INC. WHETHER THE PRODUCTS FOR WHICH THESE PLANS ARE PREPARED ARE EXECUTED OR NOT. THESE PLANS AND SPECIFICATIONS ARE NOT TO BE REPRODUCED, COPIED, OR TRANSMITTED IN ANY FORM OR BY ANY MEANS, WITHOUT THE WRITTEN CONSENT OF THE ENGINEER. COPYRIGHT © 2008 BY STREAMLINE ENGINEERING AND DESIGN, INC. ALL RIGHTS RESERVED.

PRELIMINARY:
NOT FOR
CONSTRUCTION

KEVIN R. SORENSEN
S4469

at&t

5001 EXECUTIVE PKWY., 4W550H
SAN RAMON, CA 94583

SHEET TITLE:
SITE PLAN

SHEET NUMBER:
A-1

SITE PLAN
1"=20'-0"



NOTE: (P) AT&T POWER & TELCO/FIBER ROUTES WILL BE FINALIZED IN CD

**BILL GRAHAM
CIVIC
AUDITORIUM**

CCU2159
99 GROVE ST
SAN FRANCISCO, CA 94102

ISSUE STATUS

Δ	DATE	DESCRIPTION	BY
	10/17/15	ZD 90%	C.C.
	10/29/15	ZD 95%	C.C.
	11/05/15	ZD 100%	C.C.
	-	-	-
	-	-	-

DRAWN BY: C. CODY

CHECKED BY: L. HOUGHTBY

APPROVED BY: -

DATE: 11/05/15

Streamline Engineering
and Design, Inc.

8445 Sierra College Blvd, Suite E Granite Bay, CA 95746
Contact: Larry Houghtby Phone: 916-275-4180
E-Mail: larry@streamlineeng.com Fax: 916-660-1941

THESE PLANS AND SPECIFICATIONS AS INSTRUMENTS OF SERVICE ARE AND SHALL REMAIN THE PROPERTY OF STREAMLINE ENGINEERING AND DESIGN, INC. WHETHER THE PROJECT FOR WHICH THEY ARE USED ARE EXECUTED OR NOT. THESE PLANS AND SPECIFICATIONS ARE NOT TO BE REPRODUCED, COPIED, REPRODUCED, OR TRANSMITTED IN ANY FORM OR BY ANY MEANS, WITHOUT THE WRITTEN CONSENT OF THE ENGINEER. COPYRIGHT © 2008 BY STREAMLINE ENGINEERING AND DESIGN, INC. ALL RIGHTS RESERVED.

PRELIMINARY:
NOT FOR
CONSTRUCTION

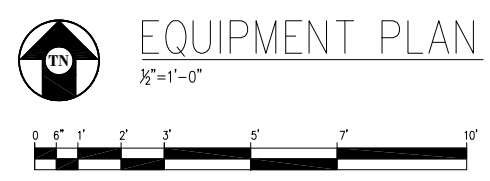
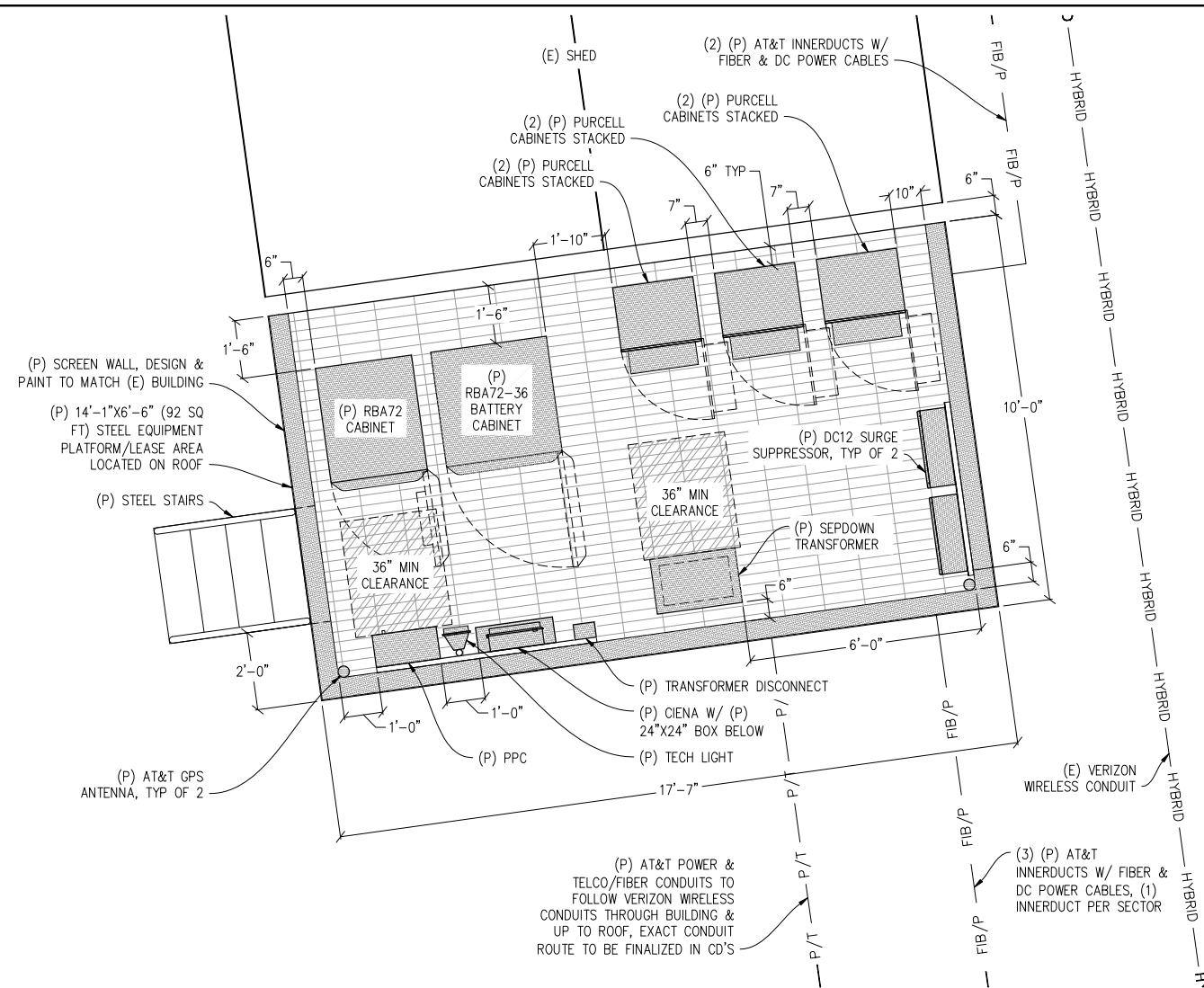
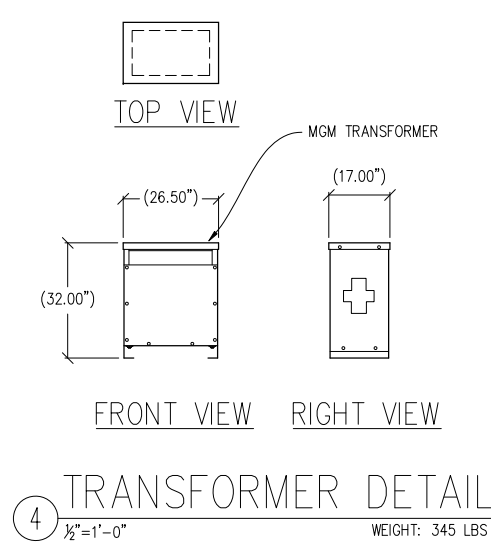
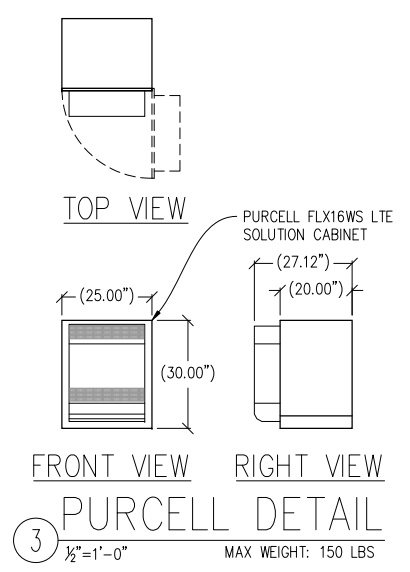
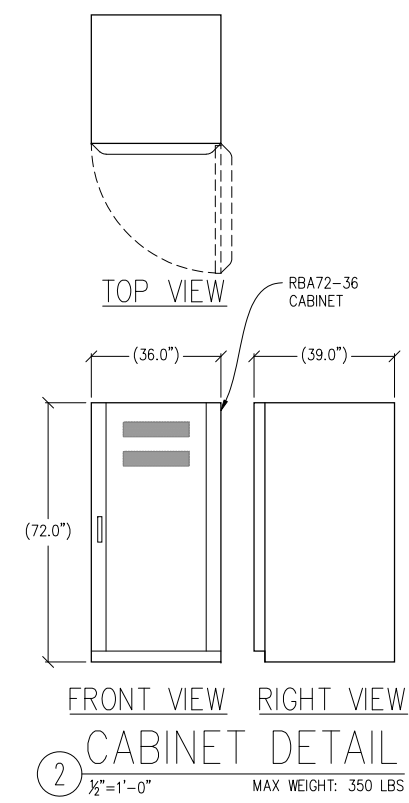
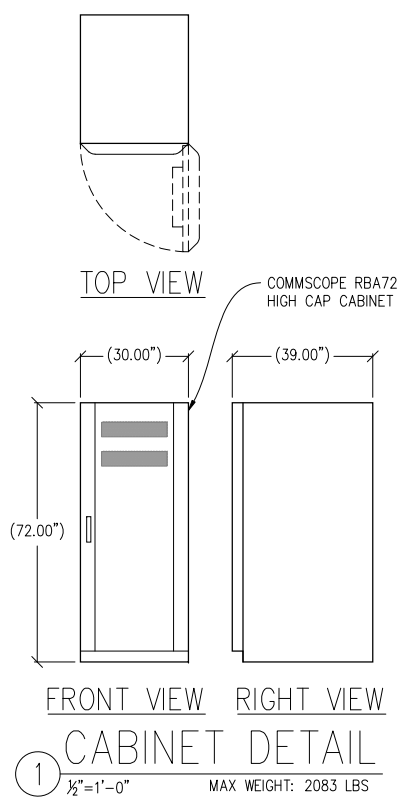
KEVIN R. SORENSEN
S4469

at&t

5001 EXECUTIVE PKWY., 4W550H
SAN RAMON, CA 94583

SHEET TITLE:
EQUIPMENT PLAN
& DETAILS

SHEET NUMBER:
A-2



**BILL GRAHAM
CIVIC
AUDITORIUM**

CCU2159
99 GROVE ST
SAN FRANCISCO, CA 94102

ISSUE STATUS

Δ	DATE	DESCRIPTION	BY
	10/17/15	ZD 90%	C.C.
	10/29/15	ZD 95%	C.C.
	11/05/15	ZD 100%	C.C.
	-	-	-
	-	-	-

DRAWN BY: C. CODY
CHECKED BY: L. HOUGHTBY
APPROVED BY: -
DATE: 11/05/15

Streamline Engineering
and Design, Inc.

8445 Sierra College Blvd, Suite E Granite Bay, CA 95746
Contact: Larry Houghtby Phone: 916-275-4180
E-Mail: larry@streamlineeng.com Fax: 916-660-1941

THESE PLANS AND SPECIFICATIONS ARE INSTRUMENTS OF SERVICE AND SHALL REMAIN THE PROPERTY OF STREAMLINE ENGINEERING AND DESIGN, INC. WHETHER THE PRODUCTS FOR WHICH THEY ARE MADE ARE FACULTY OR NOT. THESE PLANS AND SPECIFICATIONS ARE NOT TO BE REPRODUCED, COPIED, OR TRANSMITTED IN ANY FORM OR BY ANY MEANS, WITHOUT THE WRITTEN CONSENT OF THE ENGINEER. COPYRIGHT © 2008 BY STREAMLINE ENGINEERING AND DESIGN, INC. ALL RIGHTS RESERVED.

PRELIMINARY:
NOT FOR
CONSTRUCTION

KEVIN R. SORENSEN
S4469



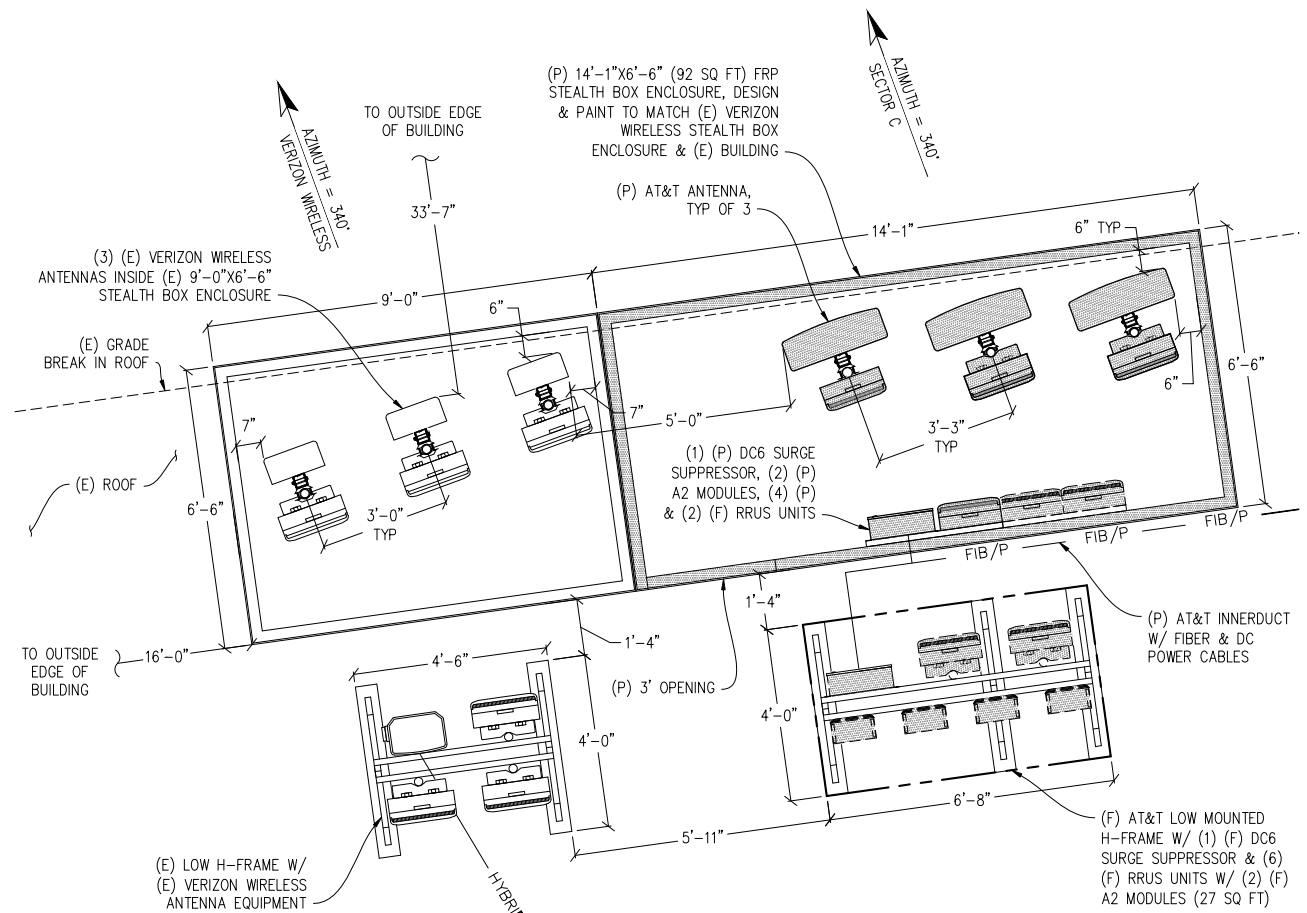
5001 EXECUTIVE PKWY., 4W550H
SAN RAMON, CA 94583

SHEET TITLE:

ANTENNA PLANS

SHEET NUMBER:

A-3



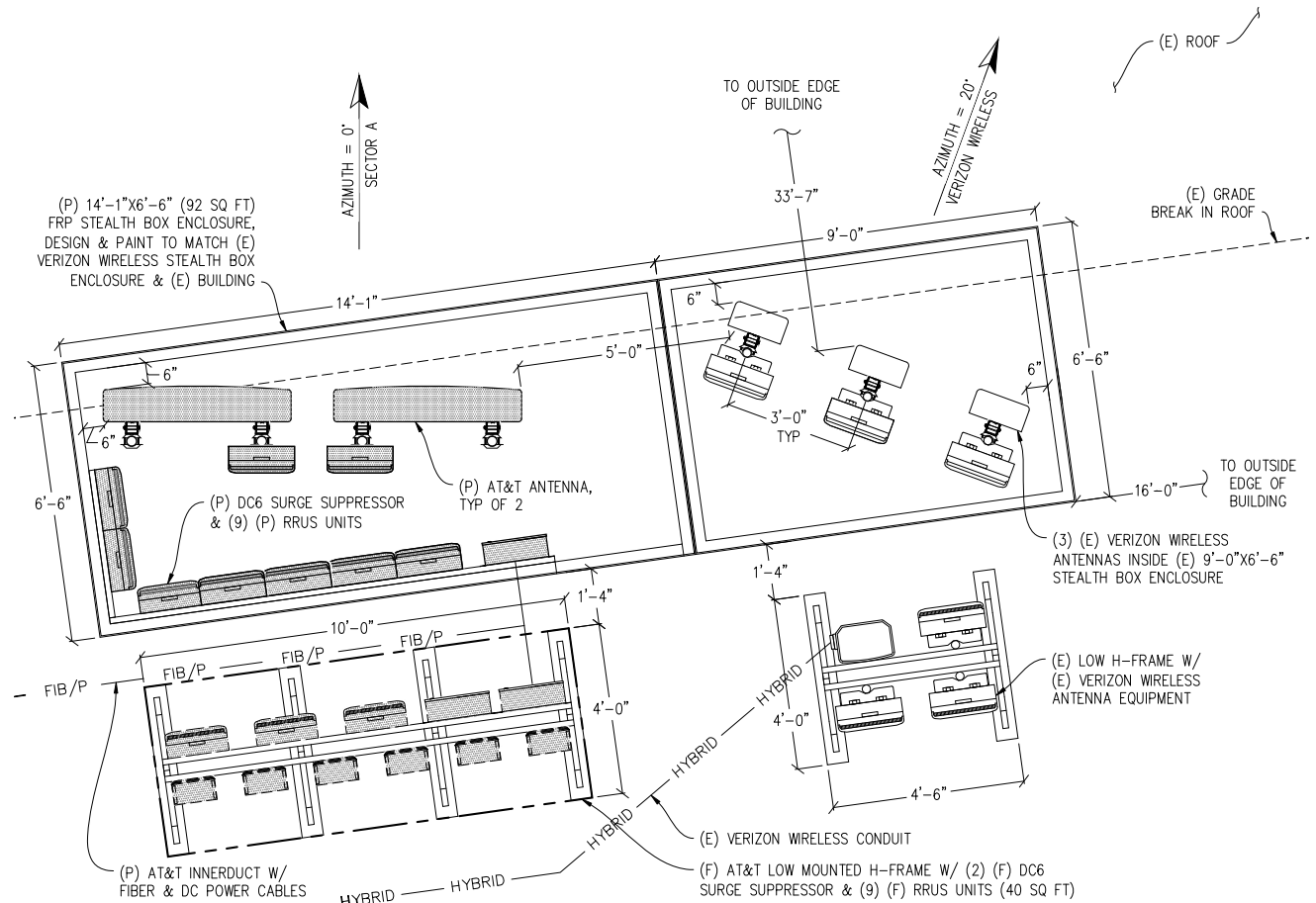
ANTENNA PLAN A

1/2"=1'-0"

- NOTE:
1. NO CHANGE TO (E) VERIZON WIRELESS FRP SCREEN OR ANTENNAS.
2. RRU UNITS ARE TO BE STAGGERED WHEN 8" SEPARATION IS NOT POSSIBLE.

ANTENNA EQUIPMENT:

- (4) (P) RRU UNITS
- (8) (F) RRU UNITS
- (2) (P) A2 MODULES
- (2) (F) A2 MODULES



ANTENNA PLAN B

1/2"=1'-0"

- NOTE:
1. NO CHANGE TO (E) VERIZON WIRELESS FRP SCREEN OR ANTENNAS.
2. RRU UNITS ARE TO BE STAGGERED WHEN 8" SEPARATION IS NOT POSSIBLE.

ANTENNA EQUIPMENT:

- (9) (P) RRU UNITS
- (9) (F) RRU UNITS

BILL GRAHAM CIVIC AUDITORIUM

CCU2159
99 GROVE ST
SAN FRANCISCO, CA 94102

ISSUE STATUS

Δ	DATE	DESCRIPTION	BY
	10/17/15	ZD 90%	C.C.
	10/29/15	ZD 95%	C.C.
	11/05/15	ZD 100%	C.C.
	-	-	-
	-	-	-

DRAWN BY: C. CODY
CHECKED BY: L. HOUGHTBY
APPROVED BY: -
DATE: 11/05/15

Streamline Engineering
and Design, Inc.

8445 Sierra College Blvd, Suite E Granite Bay, CA 95746
Contact: Larry Houghtby Phone: 916-275-4180
E-Mail: larry@streamline.com Fax: 916-660-1941

THESE PLANS AND SPECIFICATIONS, AS INSTRUMENTS OF SERVICE, ARE AND SHALL REMAIN THE PROPERTY OF STREAMLINE ENGINEERING AND DESIGN, INC. WHETHER THE PROJECTS FOR WHICH THEY ARE MADE ARE EXECUTED OR NOT. THESE PLANS AND SPECIFICATIONS ARE TO BE USED ONLY FOR THE PROJECTS AND SITES SPECIFICALLY IDENTIFIED IN THE WRITTEN CONSENT OF THE ENGINEER. COPYRIGHT © 2008 BY STREAMLINE ENGINEERING AND DESIGN, INC. ALL RIGHTS RESERVED.

PRELIMINARY:
NOT FOR
CONSTRUCTION

KEVIN R. SORENSEN
S4469

at&t



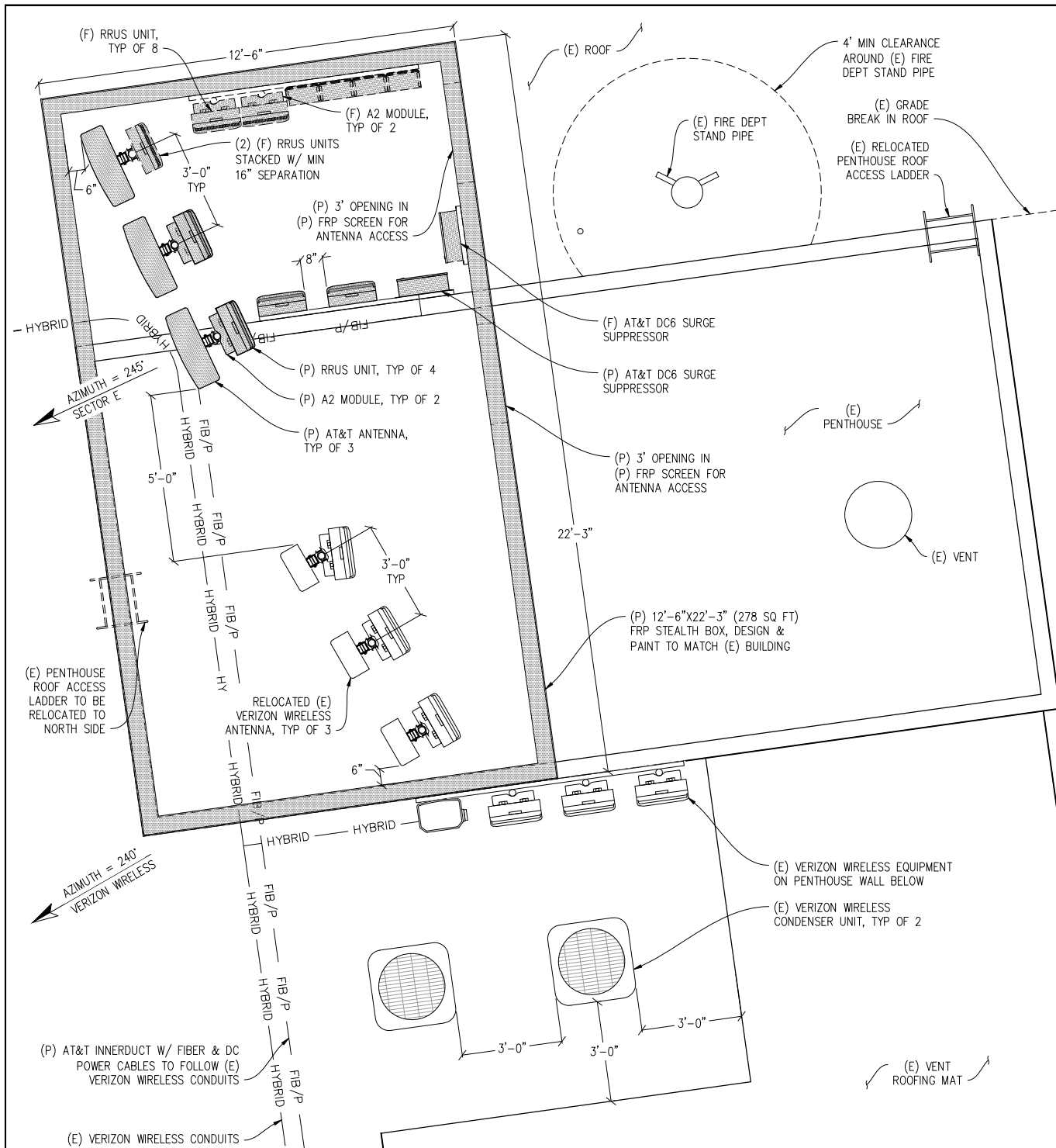
5001 EXECUTIVE PKWY., 4W550H
SAN RAMON, CA 94583

SHEET TITLE:

ANTENNA PLANS

SHEET NUMBER:

A-4



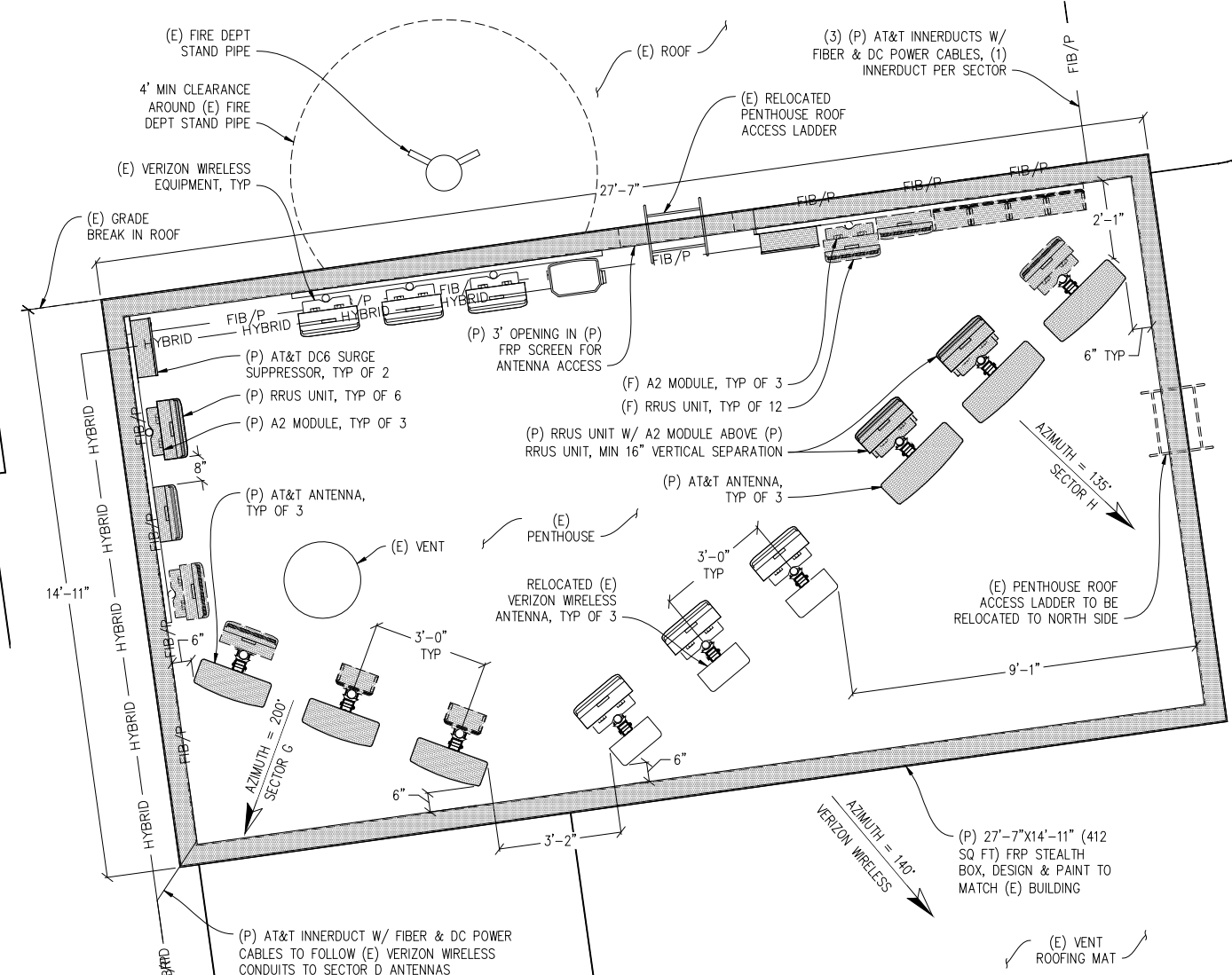
ANTENNA PLAN D

1/2" = 1'-0"

NOTE: RRUS UNITS ARE TO BE STAGGERED WHEN 8" SEPARATION IS NOT POSSIBLE.

ANTENNA EQUIPMENT:

- (4) (P) RRUS UNITS
- (8) (F) RRUS UNITS
- (2) (P) A2 MODULES
- (2) (F) A2 MODULES



ANTENNA PLAN C

1/2" = 1'-0"

NOTE: RRUS UNITS ARE TO BE STAGGERED WHEN 8" SEPARATION IS NOT POSSIBLE.

ANTENNA EQUIPMENT:

- (6) (P) RRUS UNITS
- (12) (F) RRUS UNITS
- (3) (P) A2 MODULES
- (3) (F) A2 MODULES

**BILL GRAHAM
CIVIC
AUDITORIUM**

CCU2159
99 GROVE ST
SAN FRANCISCO, CA 94102

ISSUE STATUS

Δ	DATE	DESCRIPTION	BY
	10/17/15	ZD 90%	C.C.
	10/29/15	ZD 95%	C.C.
	11/05/15	ZD 100%	C.C.
	-	-	-
	-	-	-

DRAWN BY: C. CODY

CHECKED BY: L. HOUGHTBY

APPROVED BY: -

DATE: 11/05/15

Streamline Engineering
and Design, Inc.

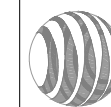
8445 Sierra College Blvd, Suite E Granite Bay, CA 95746
Contact: Larry Houghtby Phone: 916-275-4180
E-Mail: larry@streamline.com Fax: 916-660-1941

THIS PLAN AND SPECIFICATIONS, AS INSTRUMENTS OF SERVICE, ARE AND SHALL REMAIN THE PROPERTY OF STREAMLINE ENGINEERING AND DESIGN, INC. WHETHER THE PRODUCTS FOR WHICH THEY ARE MADE ARE EXECUTED OR NOT. THESE INSTRUMENTS OF SERVICE SHALL BE RETURNED TO STREAMLINE ENGINEERING AND DESIGN, INC. UPON COMPLETION OF THE PROJECT. COPYRIGHT © 2008, STREAMLINE ENGINEERING AND DESIGN, INC. ALL RIGHTS RESERVED.

**PRELIMINARY:
NOT FOR
CONSTRUCTION**

KEVIN R. SORENSEN
S4469

at&t



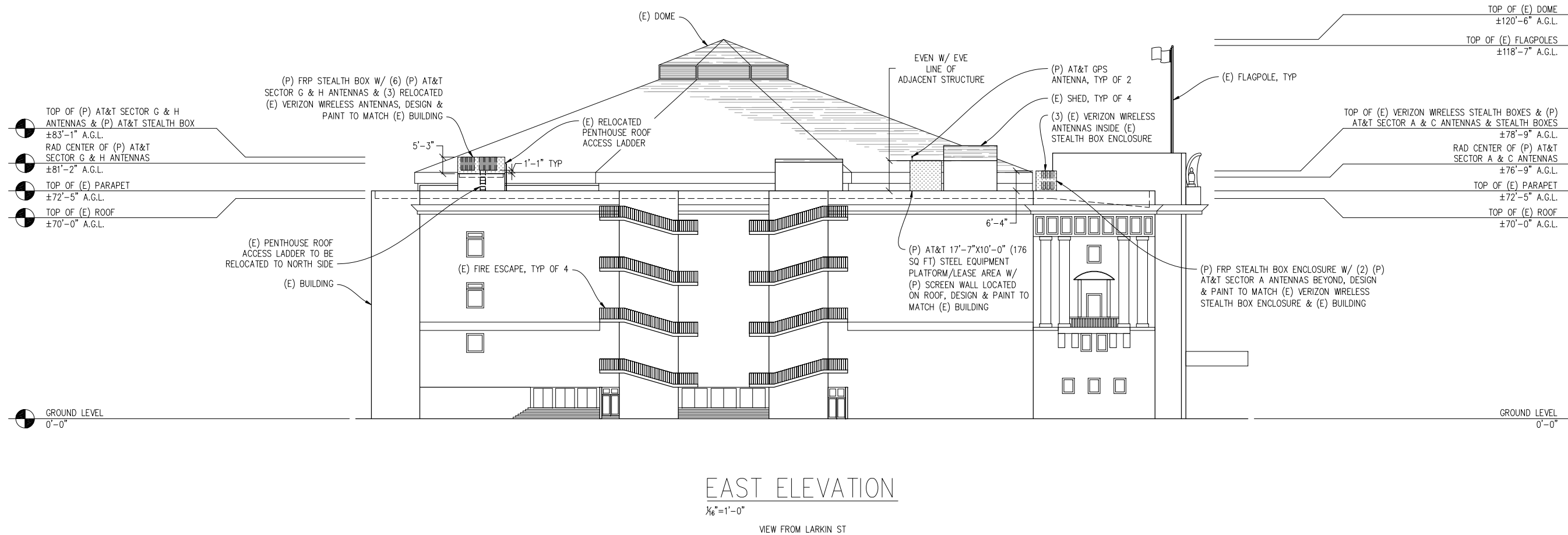
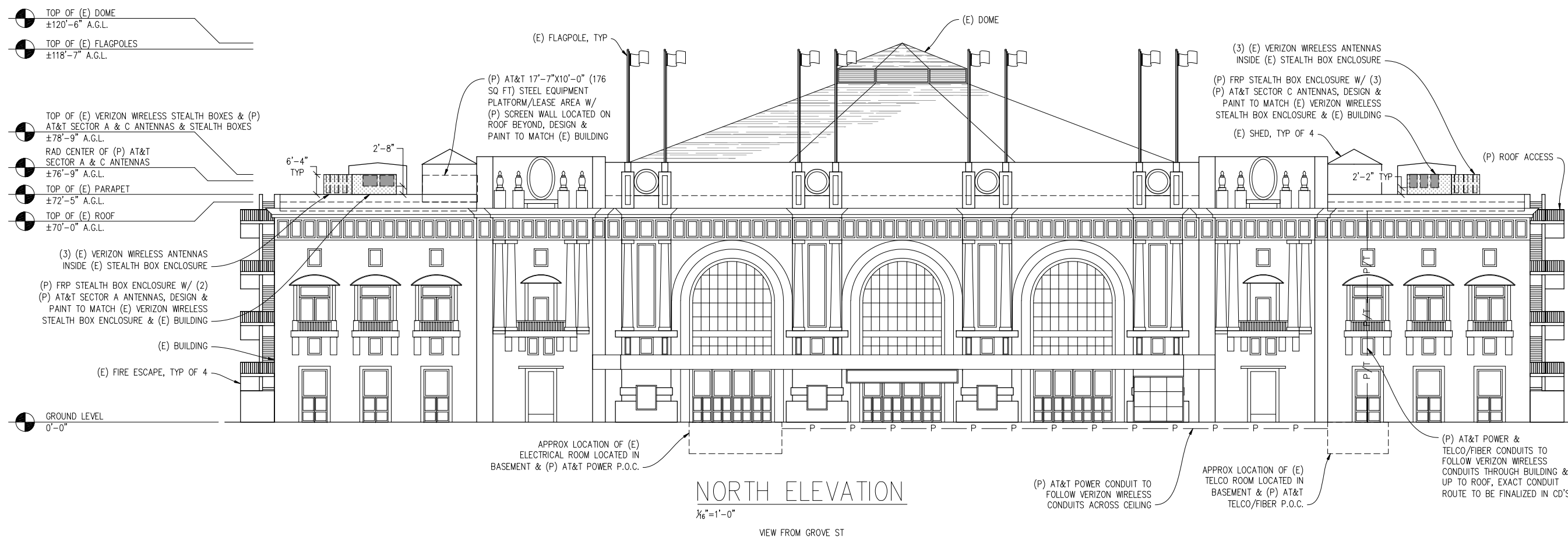
5001 EXECUTIVE PKWY., 4W550H
SAN RAMON, CA 94583

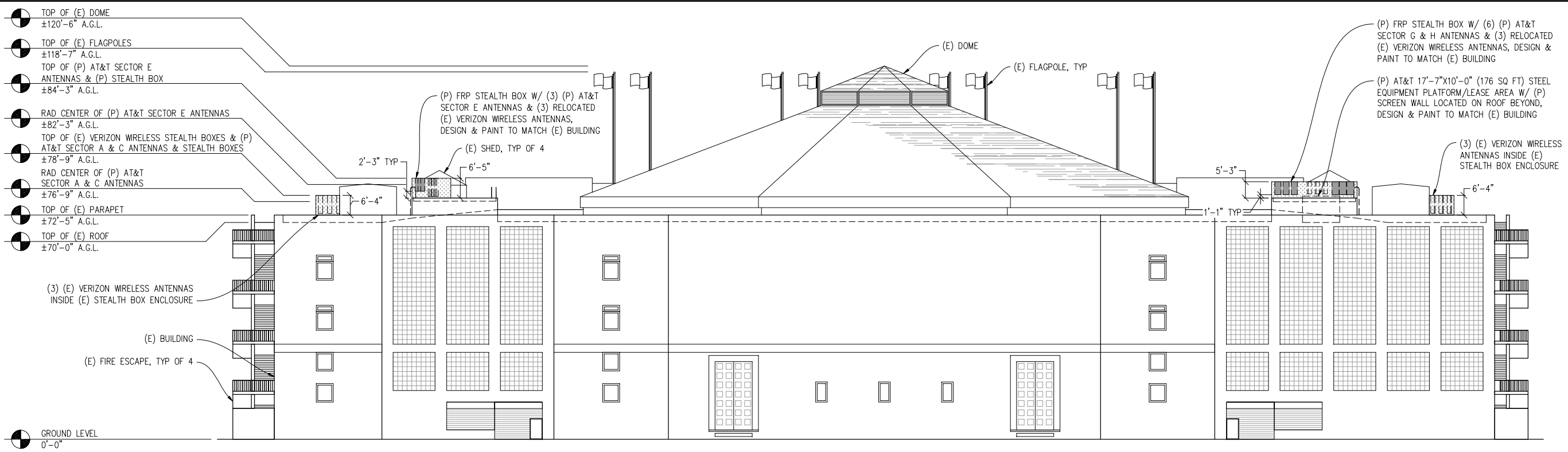
SHEET TITLE:

ELEVATIONS

SHEET NUMBER:

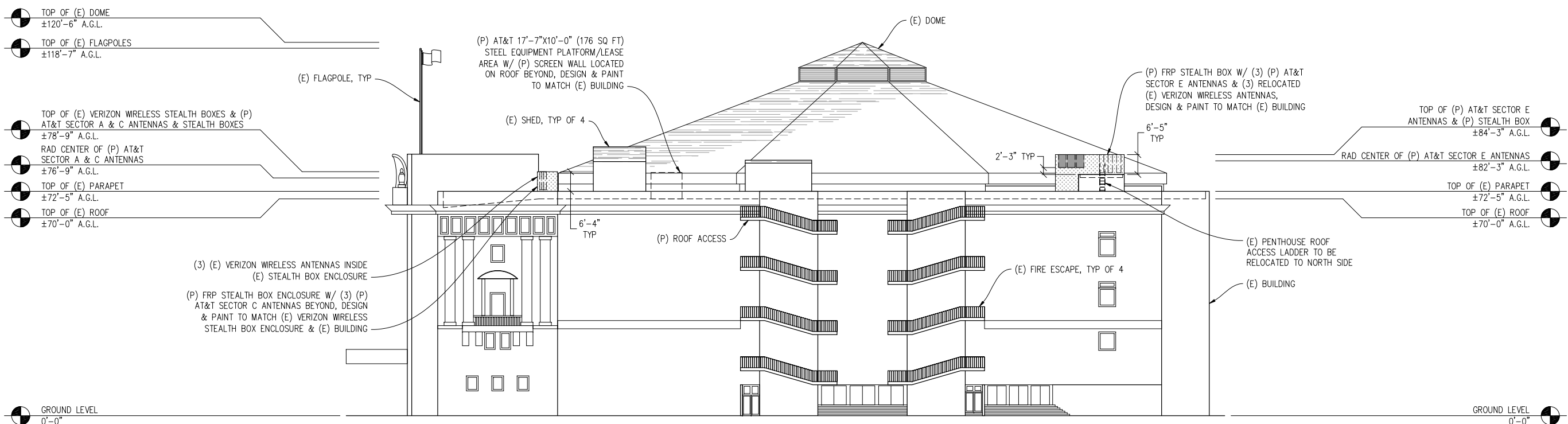
A-5





SOUTH ELEVATION

1/16"=1'-0"
VIEW FROM HAYES ST



WEST ELEVATION

1/16"=1'-0"
VIEW FROM POLK ST

**BILL GRAHAM
CIVIC
AUDITORIUM**

CCU2159
99 GROVE ST
SAN FRANCISCO, CA 94102

ISSUE STATUS

Δ	DATE	DESCRIPTION	BY
	10/17/15	ZD 90%	C.C.
	10/29/15	ZD 95%	C.C.
	11/05/15	ZD 100%	C.C.
	-	-	-
	-	-	-

DRAWN BY: C. CODY
CHECKED BY: L. HOUGHTBY
APPROVED BY: -
DATE: 11/05/15

Streamline Engineering
and Design, Inc.

8445 Sierra College Blvd, Suite E Granite Bay, CA 95746
Contact: Larry Houghtby Phone: 916-275-4180
E-Mail: larry@streamlineeng.com Fax: 916-660-1941

THESE PLANS AND SPECIFICATIONS, AS INSTRUMENTS OF SERVICE, ARE AND SHALL REMAIN THE PROPERTY OF STREAMLINE ENGINEERING AND DESIGN, INC. WHETHER THE PRODUCTS FOR WHICH THEY ARE MADE ARE EXECUTED OR NOT. THESE PLANS AND SPECIFICATIONS ARE NOT TO BE REPRODUCED, COPIED, REPRODUCED, OR TRANSMITTED IN ANY FORM OR BY ANY MEANS, WITHOUT THE WRITTEN CONSENT OF THE ENGINEER. COPYRIGHT © 2008, STREAMLINE ENGINEERING AND DESIGN, INC. ALL RIGHTS RESERVED.

PRELIMINARY:
NOT FOR
CONSTRUCTION

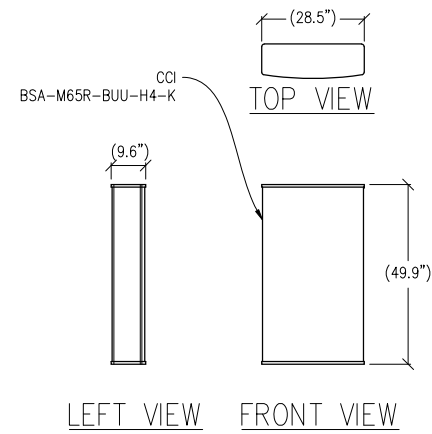
KEVIN R. SORENSEN
S4469

at&t

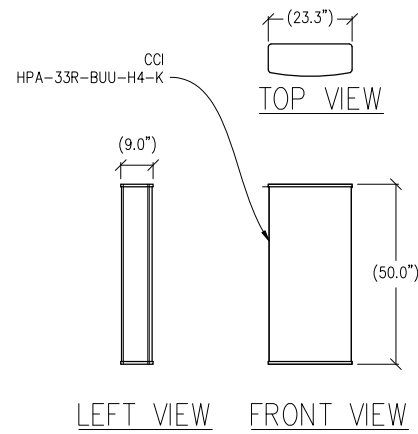
5001 EXECUTIVE PKWY., 4W550H
SAN RAMON, CA 94583

SHEET TITLE:
ELEVATIONS

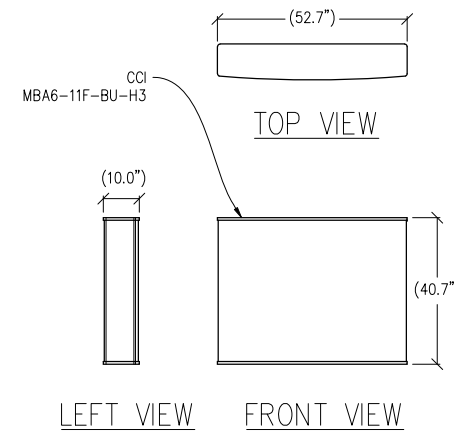
SHEET NUMBER:
A-6



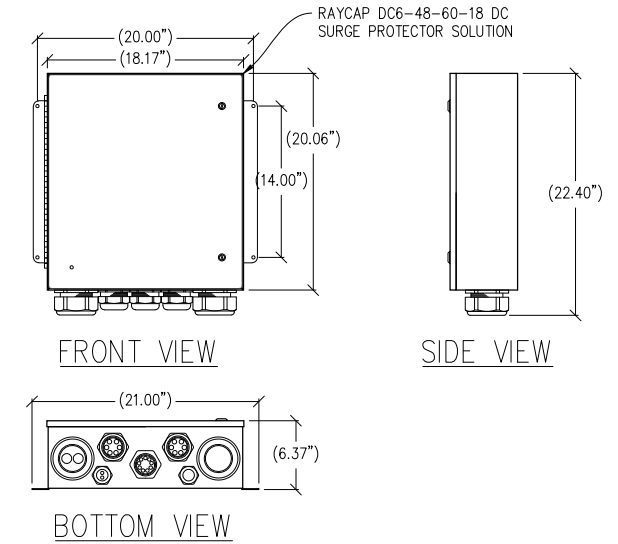
1 ANTENNA DETAIL
 $\frac{1}{2}''=1'-0''$ MAX WEIGHT: 75.0 LBS



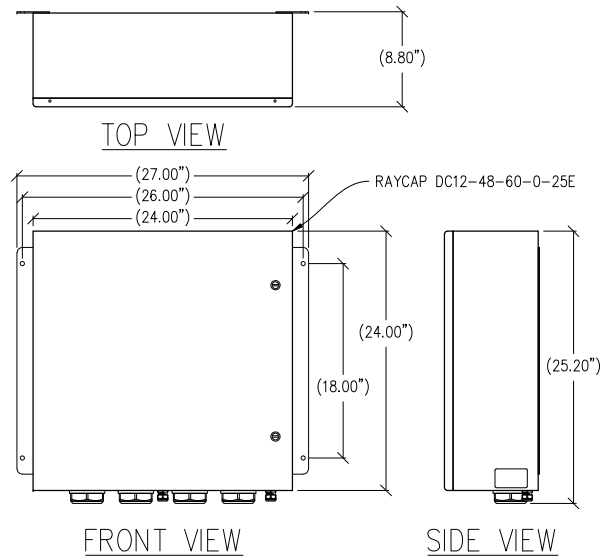
2 ANTENNA DETAIL
 $\frac{1}{2}''=1'-0''$ MAX WEIGHT: 50.0 LBS



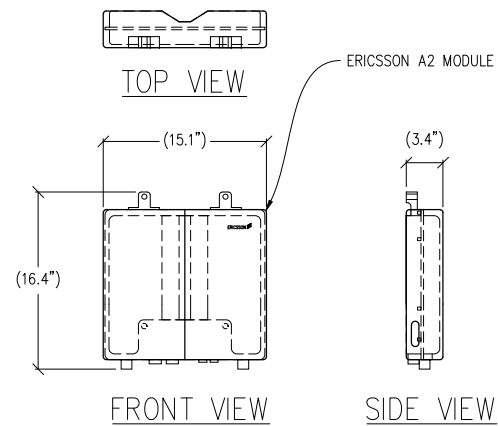
3 ANTENNA DETAIL
 $\frac{1}{2}''=1'-0''$ MAX WEIGHT: 115.0 LBS



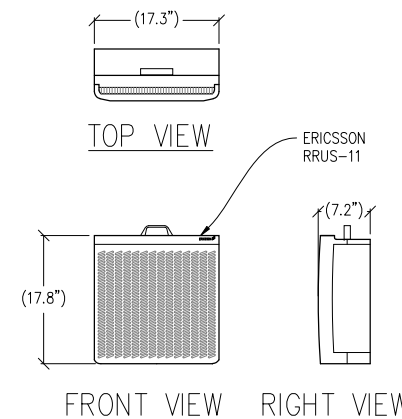
4 SURGE SUPPRESSION DETAIL
 $1\frac{1}{2}''=1'-0''$ MAX WEIGHT: 43.5 LBS



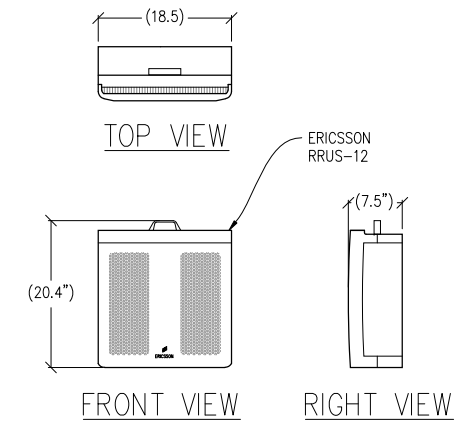
5 SURGE SUPPRESSION DETAIL
 $1\frac{1}{2}''=1'-0''$ MAX WEIGHT: 56.3 LBS



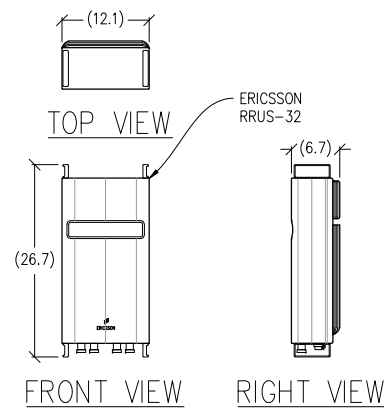
6 A2 MODULE DETAIL
 $1\frac{1}{2}''=1'-0''$ MAX WEIGHT: 22 LBS



7 RRUS-11 DETAIL
 $1''=1'-0''$ MAX WEIGHT: 50 LBS



8 RRUS-12 DETAIL
 $1''=1'-0''$ MAX WEIGHT: 50 LBS



9 RRUS-32 DETAIL
 $1''=1'-0''$ MAX WEIGHT: 60 LBS

BILL GRAHAM CIVIC AUDITORIUM

CCU2159
 99 GROVE ST
 SAN FRANCISCO, CA 94102

ISSUE STATUS

Δ	DATE	DESCRIPTION	BY
	10/17/15	ZD 90%	C.C.
	10/29/15	ZD 95%	C.C.
	11/05/15	ZD 100%	C.C.
	-	-	-
	-	-	-

DRAWN BY: C. CODY
 CHECKED BY: L. HOUGHTBY
 APPROVED BY: -
 DATE: 11/05/15

Streamline Engineering and Design, Inc.
 8445 Sierra College Blvd, Suite E Granite Bay, CA 95746
 Contact: Larry Houghtby Phone: 916-275-4180
 E-Mail: larry@streamline.com Fax: 916-660-1941
THESE PLANS AND SPECIFICATIONS ARE INSTRUMENTS OF SERVICE AND SHALL REMAIN THE PROPERTY OF STREAMLINE ENGINEERING AND DESIGN, INC. WHETHER THE PROJECTS FOR WHICH THEY ARE MADE ARE EXECUTED OR NOT. THESE PLANS AND SPECIFICATIONS ARE NOT TO BE REPRODUCED, COPIED, OR TRANSMITTED IN ANY FORM OR BY ANY MEANS, WITHOUT THE WRITTEN CONSENT OF THE ENGINEER. COPYRIGHT © 2008 BY STREAMLINE ENGINEERING AND DESIGN, INC. ALL RIGHTS RESERVED.

PRELIMINARY:
 NOT FOR
 CONSTRUCTION

KEVIN R. SORENSEN
 S4469



5001 EXECUTIVE PKWY, 4W550H
 SAN RAMON, CA 94583

SHEET TITLE:

DETAILS

SHEET NUMBER:

A-7