



artist WALTER HOOD

January 2020

BOW

PROPOSAL FOR FIRE STATION #35

PUBLIC ART PROJECT



The viewing platform is inspired by its setting adjacent to the historic Fire Station #35 and the San Francisco Bay and Bridge.

BOW...the curved shape associated with the front of a boat is multi-dimensional in its interpretation. It is an homage to the fireboats and their role in the cultural history of the City of San Francisco and Bay, including their significant contributions during and after the Loma Prieta Earthquake. It is a sculpture that can be experienced from all around and from within; a commemorative work that features the boathouse history and narrative from citizens who experienced the earthquake. Similar to how the crew of Fire Station #35 moves deliberately on the water using navigational charts without the reference of built objects, **BOW** is a sculpture to showcase and commemorate these unseen cultural histories.

BOW serves as both a visually striking element along the Embarcadero and the Bay, as well as an overlook and a resting place. At the edge of the pier deck, **BOW** sticks out...overlooking the old and new fireboats, the bay and bridge. The sculpture appears also to be pulled out onto the sidewalk. The stern incorporates a sculpture information panel, which echoes the form of the bow and locates the sculpture along the embarcadero. People are invited to walk to the overlook with a simple accessible ramp from where they can enjoy the spectacular bay views and the daily operations of the fireboats of Fire Station #35. At the center of the overlook a series of glass panels are collaged with historic images and quotations to illuminate the cultural importance of Fire Station #35

NARRATIVE





MONTGOMERY

SANSOME

BATTERY

FRONT

DAVIS

DRUMH

SECOND

MARKET

MISSION

FIRST

FREMONT

BEALE

MAIN

HOWARD

SPEAR

FOLSON

STEWART

MISSION

THE EMBARCADERO

41

31

40

3

22

12

43

41

16

21

29

37

2

34

15

44

39

25

17

19

1

23

6

8

30

11

20

47

46

5

45

14

24

32

26

16

23

72

4

53

38

13

7

11

10

9

8

7

6

5

4

3

2

1

28

RINCON POINT



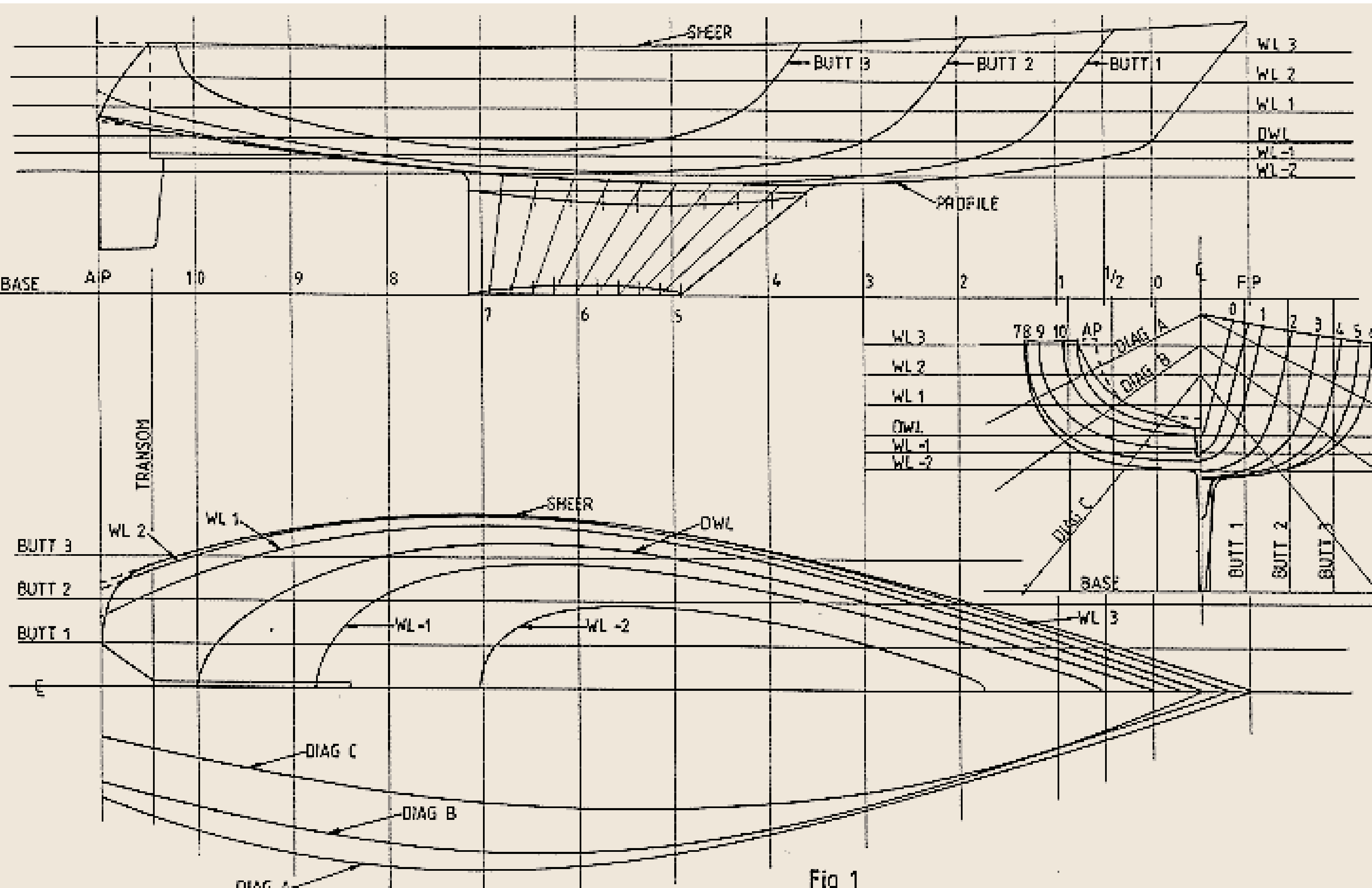
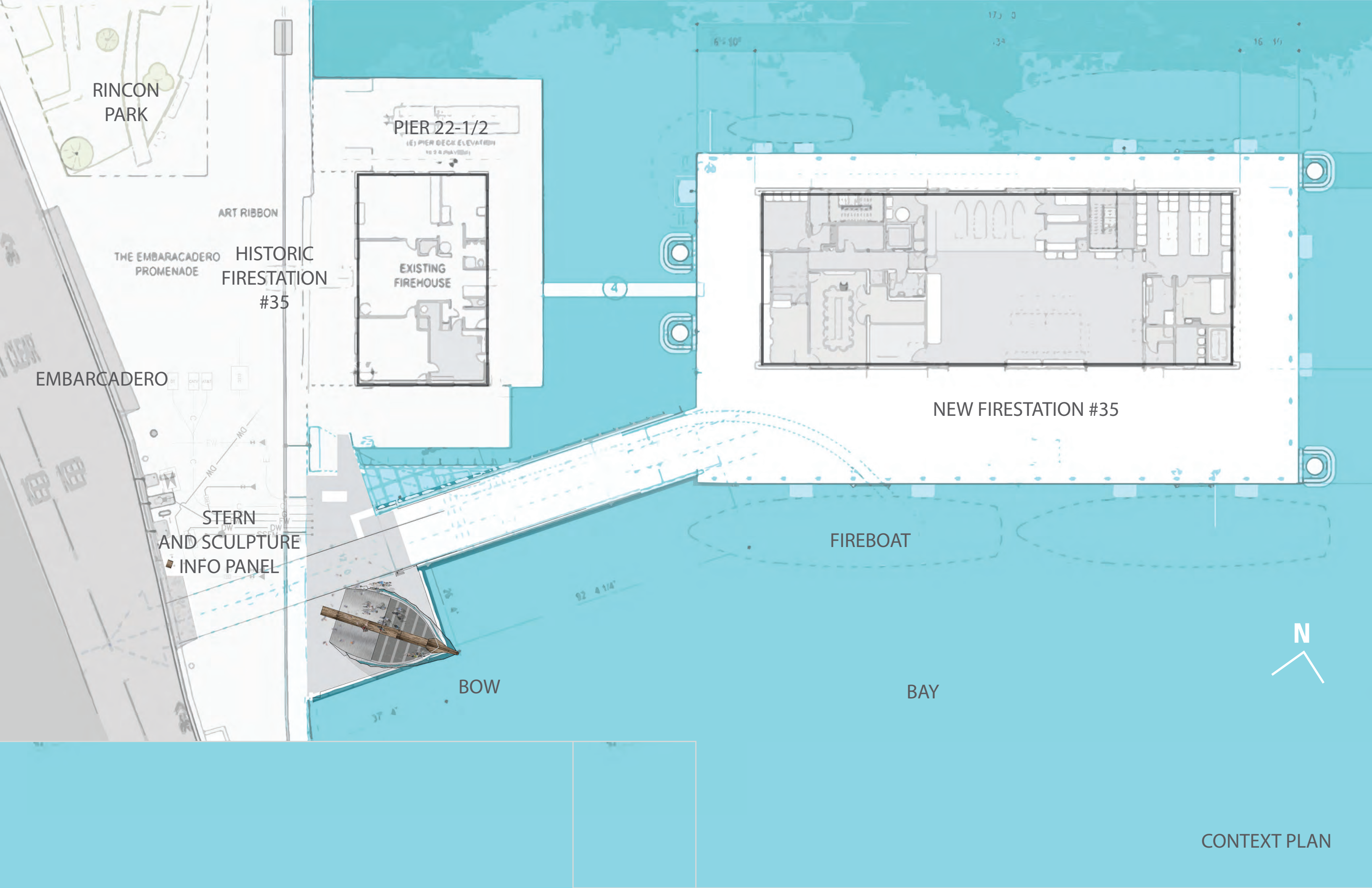


Fig 1



PLANS, SECTIONS, ELEVATIONS



RINCON
PARK

ART RIBBON

THE EMBARCADERO
PROMENADE

HISTORIC
FIRESTATION
#35

PIER 22-1/2

(E) PIER DECK ELEVATION
15'-2" (4.63M)

EXISTING
FIREHOUSE

4

NEW FIRESTATION #35

EMBARCADERO

STERN
AND SCULPTURE
INFO PANEL

FIREBOAT

BOW

BAY

N

CONTEXT PLAN

STERN
AND SCULPTURE
INFORMATION PANEL

12" min from
curb cut

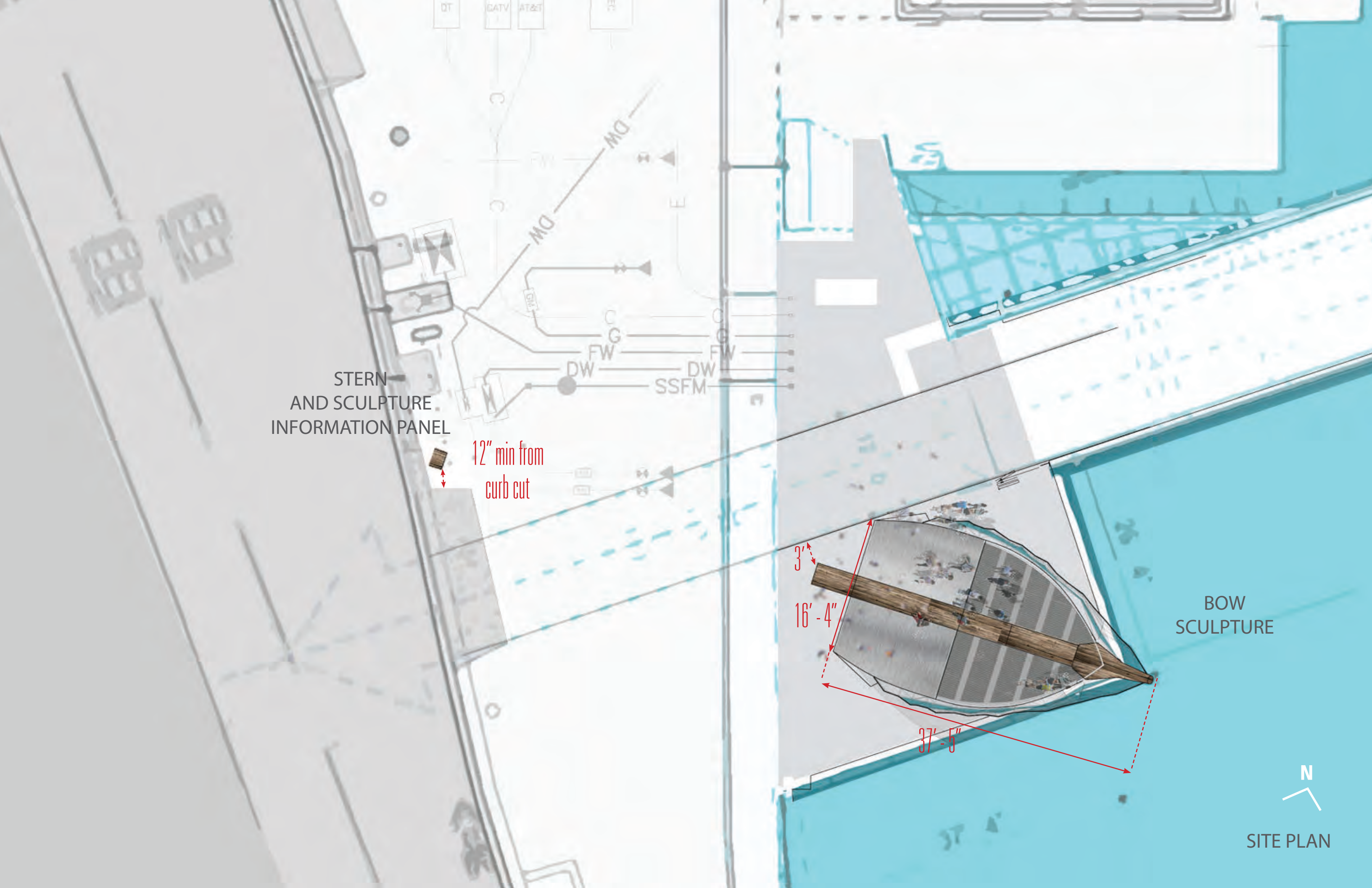
3'
16'-4"

37'-5"

BOW
SCULPTURE



SITE PLAN



wood
centerpiece

metal ramp

glass panels wood bow

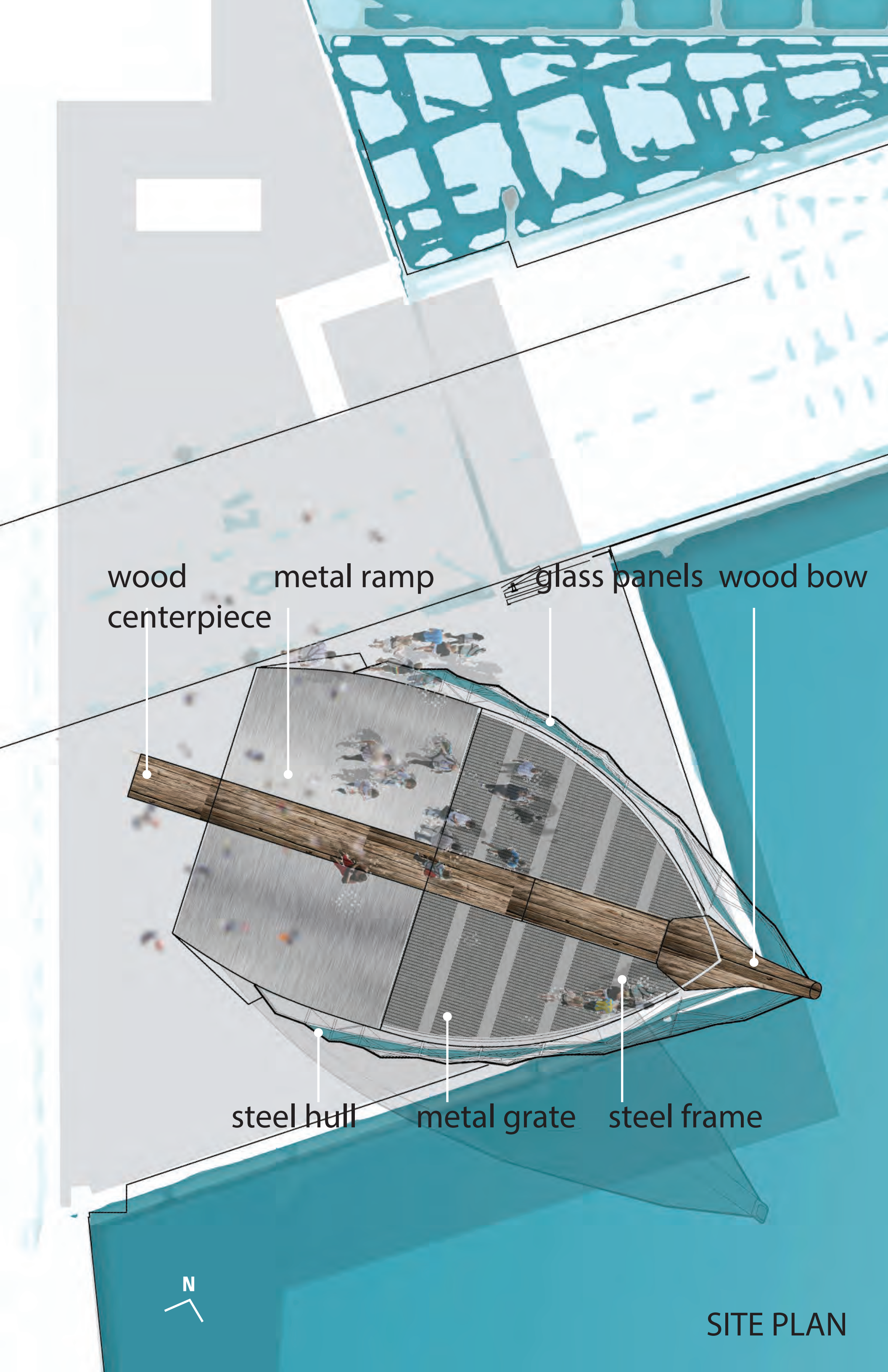
steel hull

metal grate

steel frame



SITE PLAN

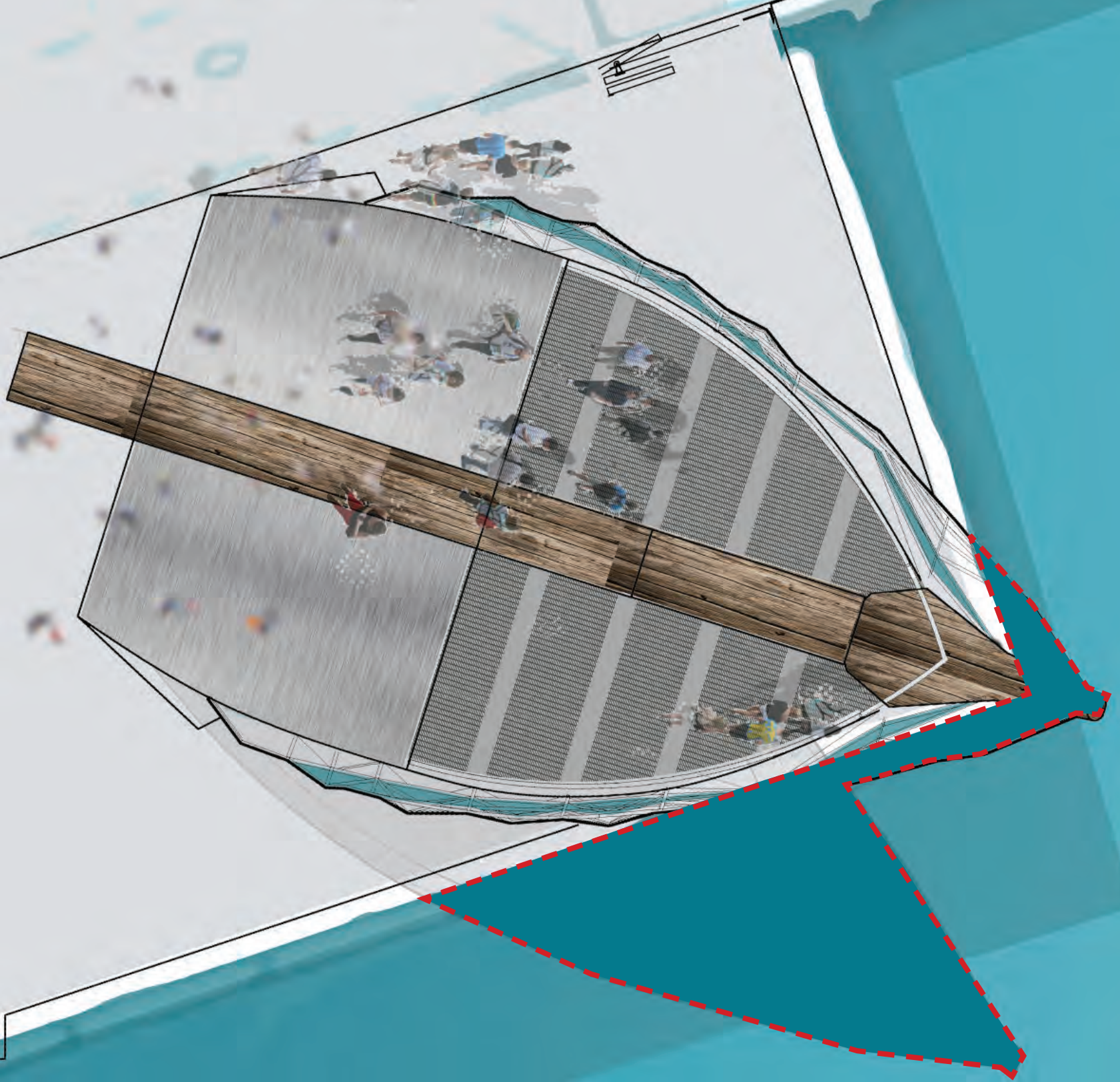


BAY FILL AND SHADOW

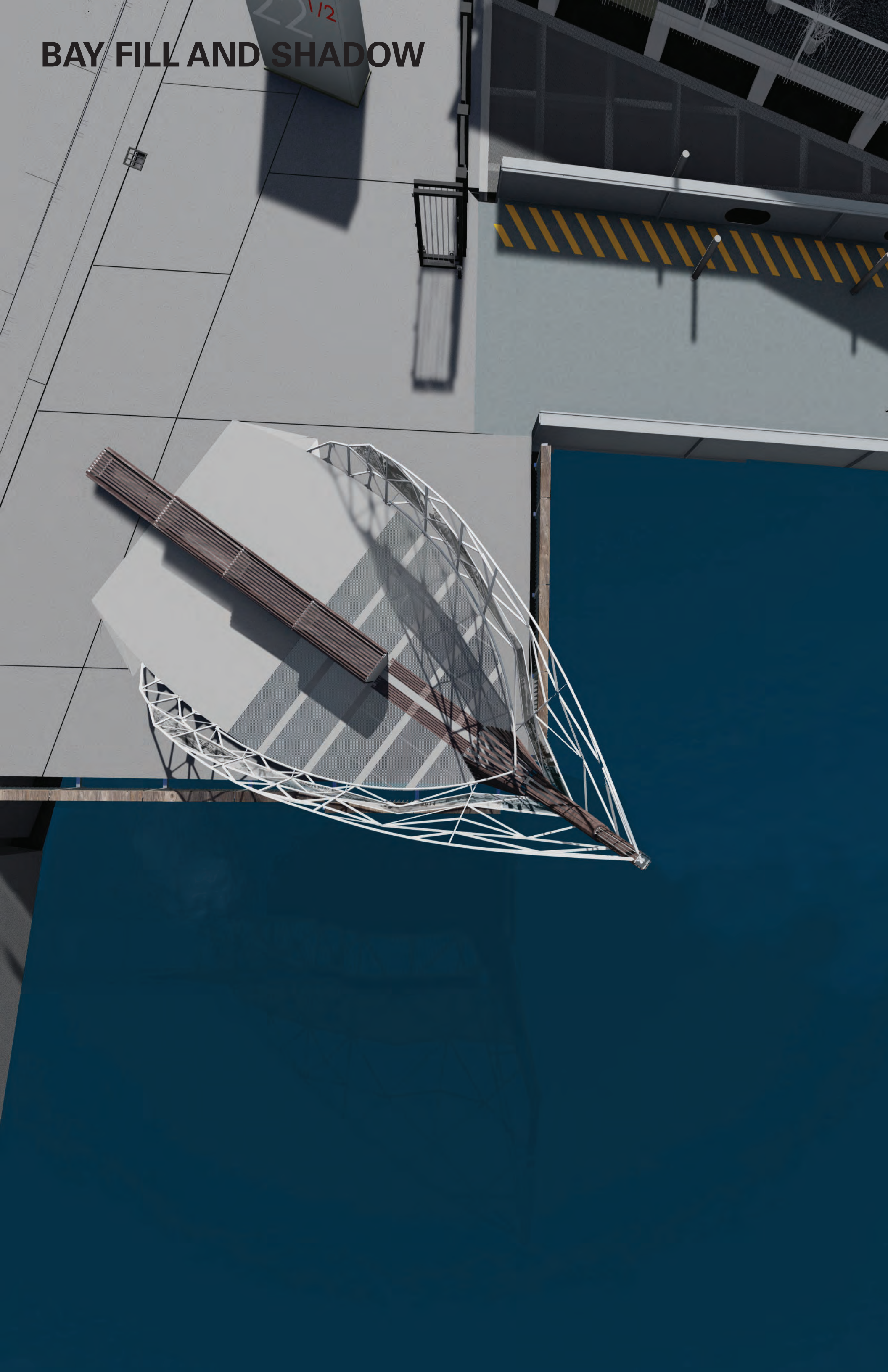
FILL AREA

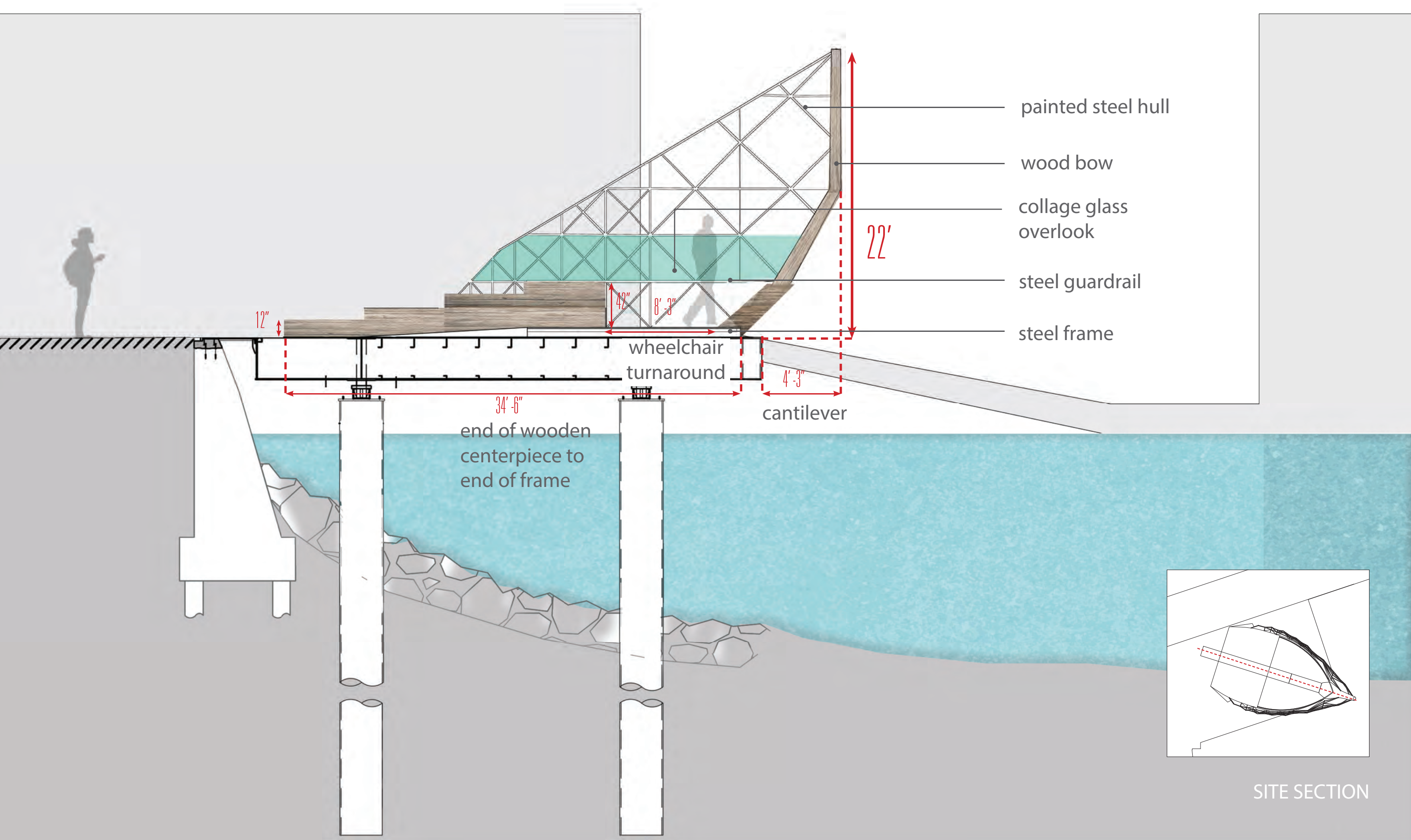


BAY SHADOW AND FILL	
ESTIMATED	117 SF
WITH CONTINGENCY	175 SF



BAY FILL AND SHADOW





painted steel hull

wood bow

collage glass overlook

steel guardrail

steel frame

22'

wheelchair turnaround

cantilever

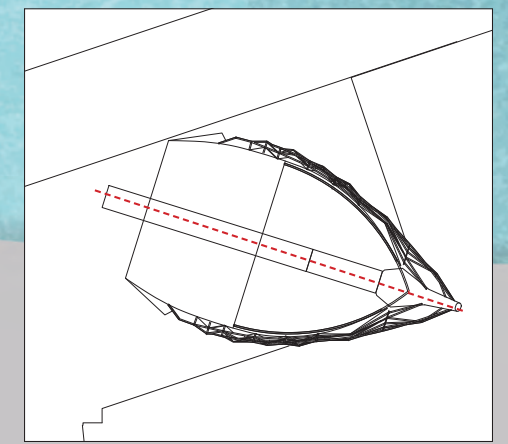
34'-6"
end of wooden centerpiece to end of frame

12"

42"

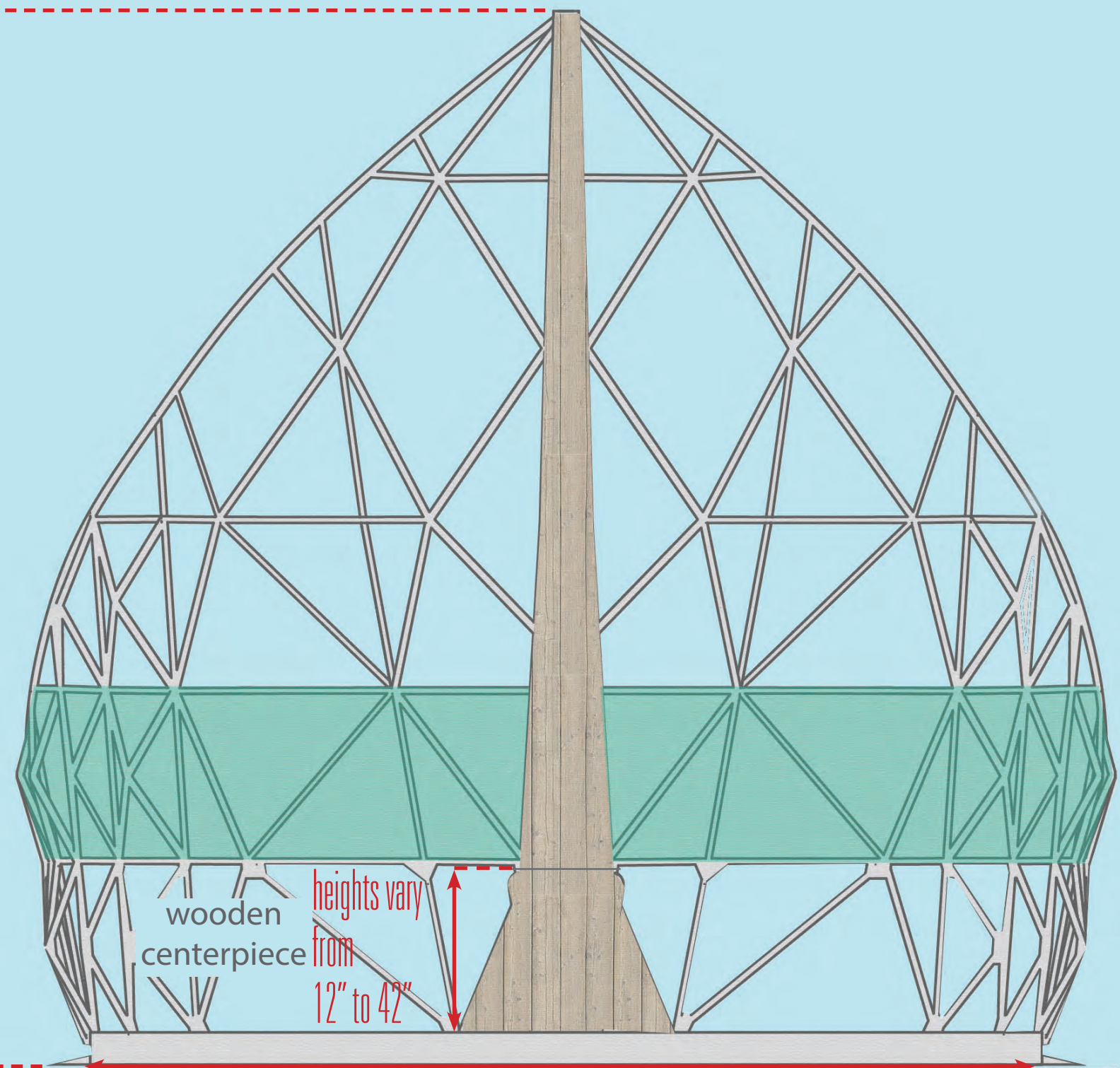
8'-3"

4'-3"



SITE SECTION

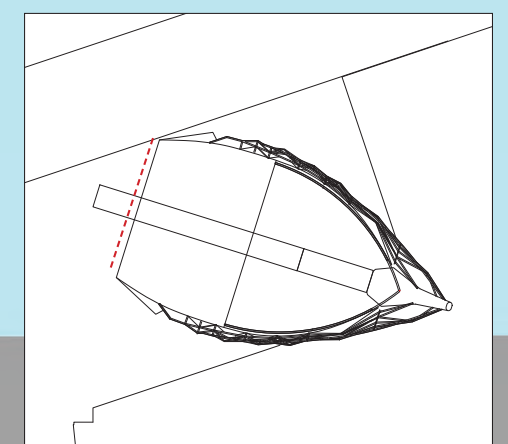
22'



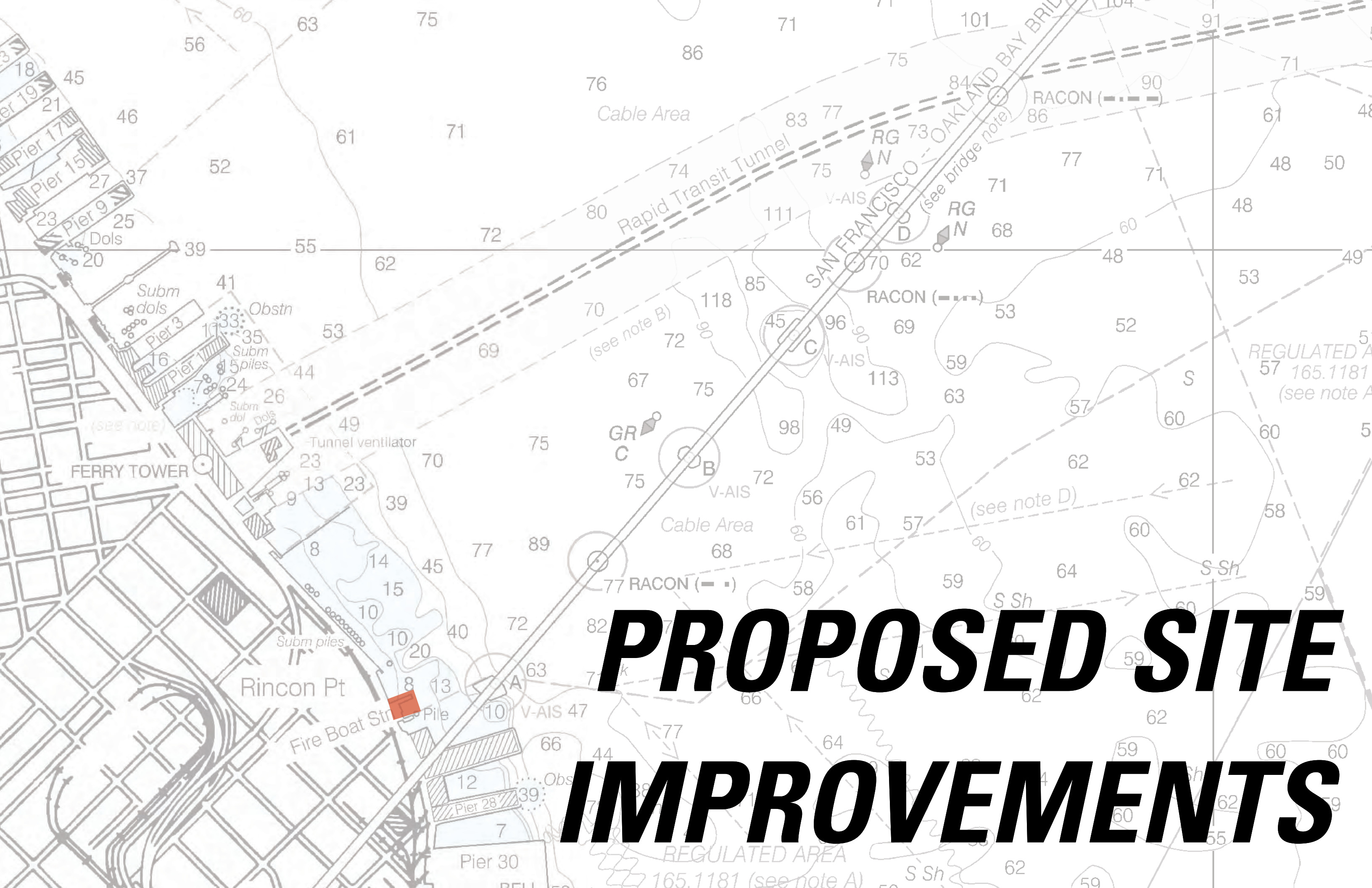
wooden
centerpiece

heights vary
from
12" to 42"

16'-4"
width of
metal ramp

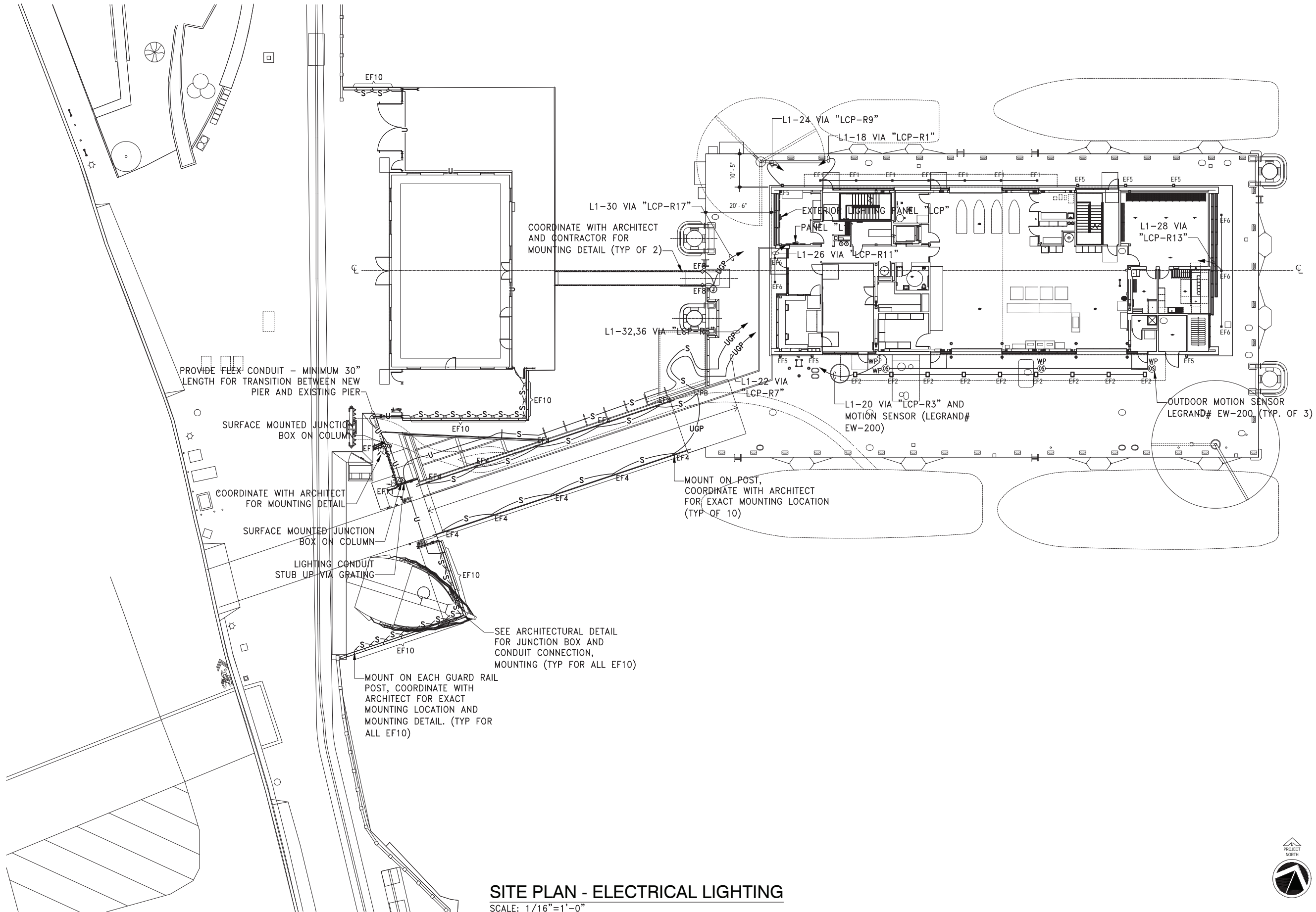


SITE ELEVATION



PROPOSED SITE
IMPROVEMENTS

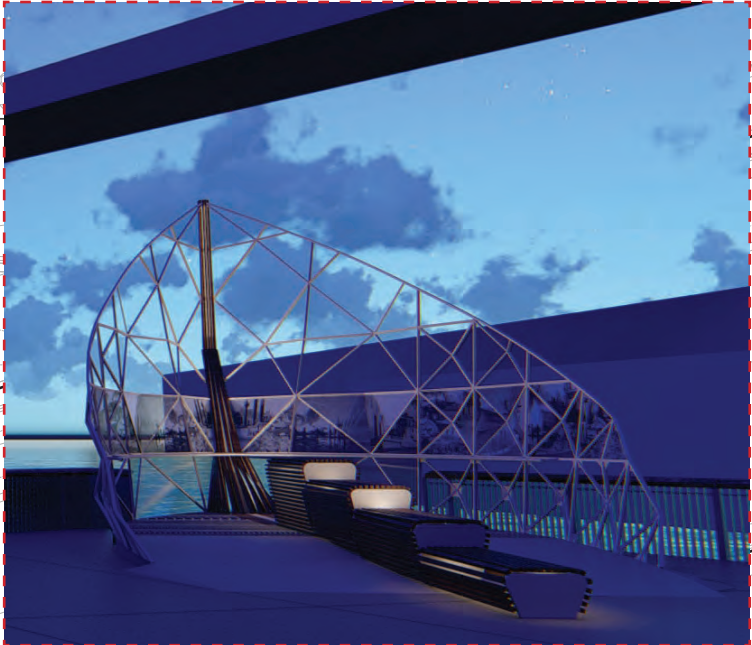
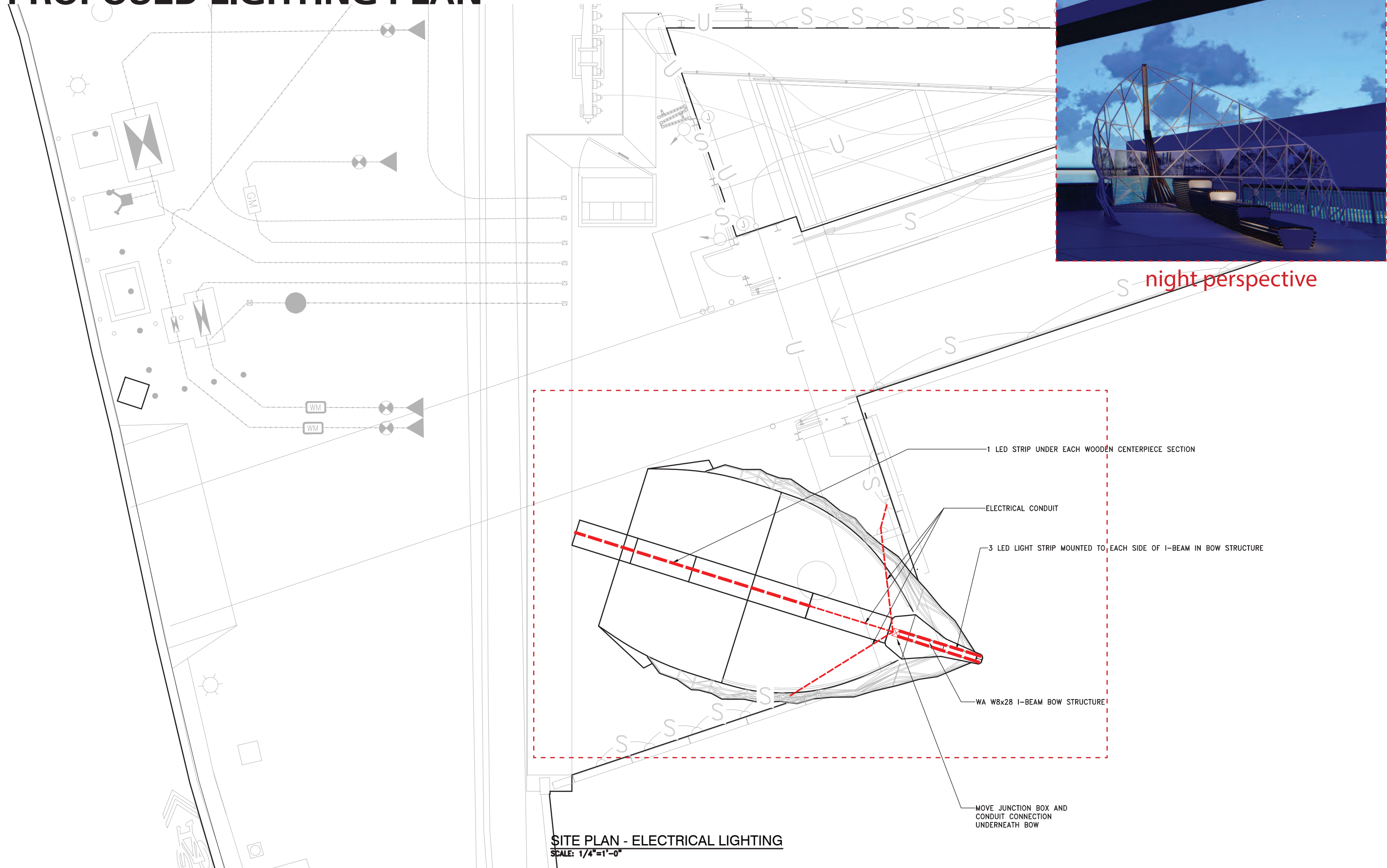
EXISTING LIGHTING PLAN



SITE PLAN - ELECTRICAL LIGHTING
 SCALE: 1/16"=1'-0"



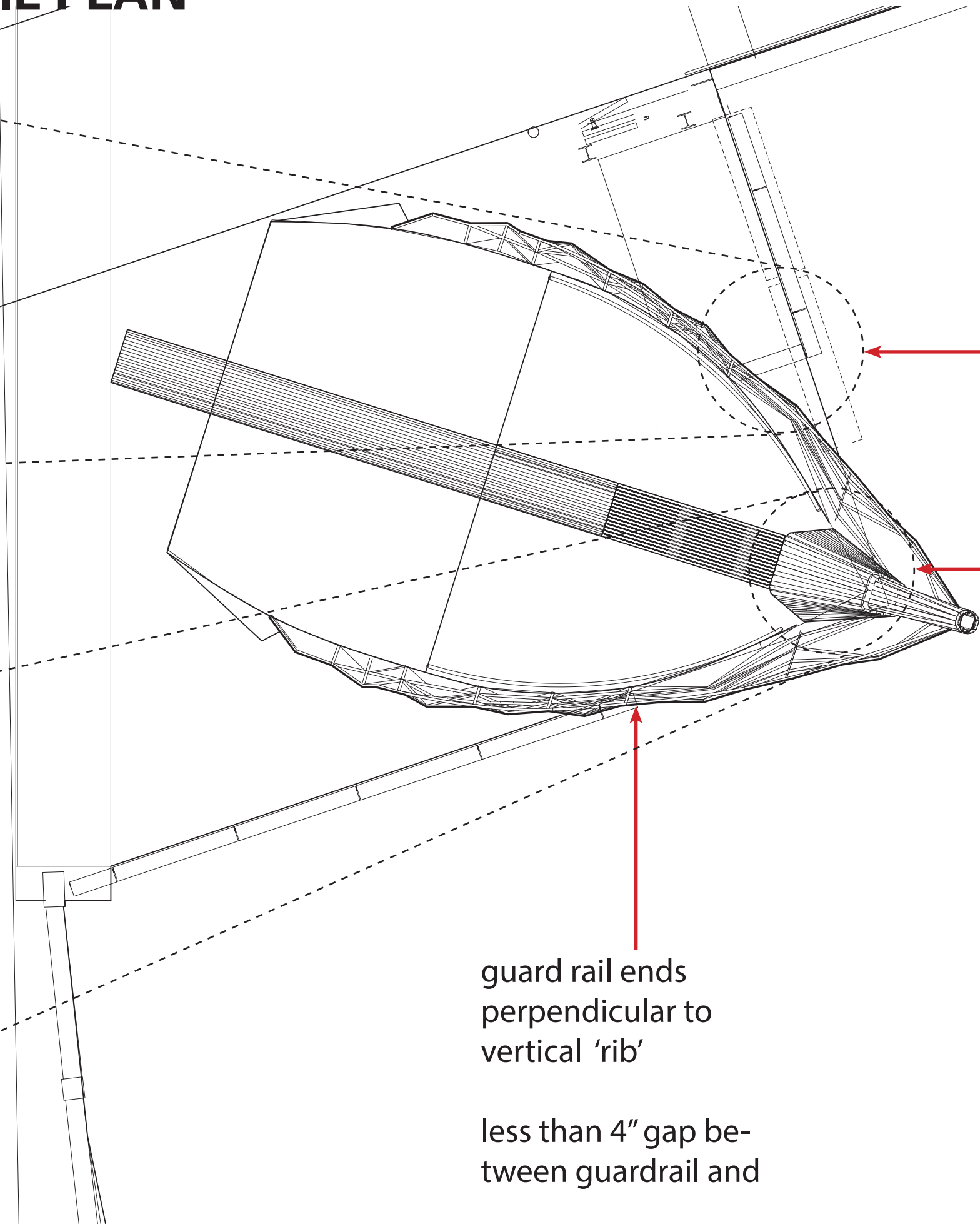
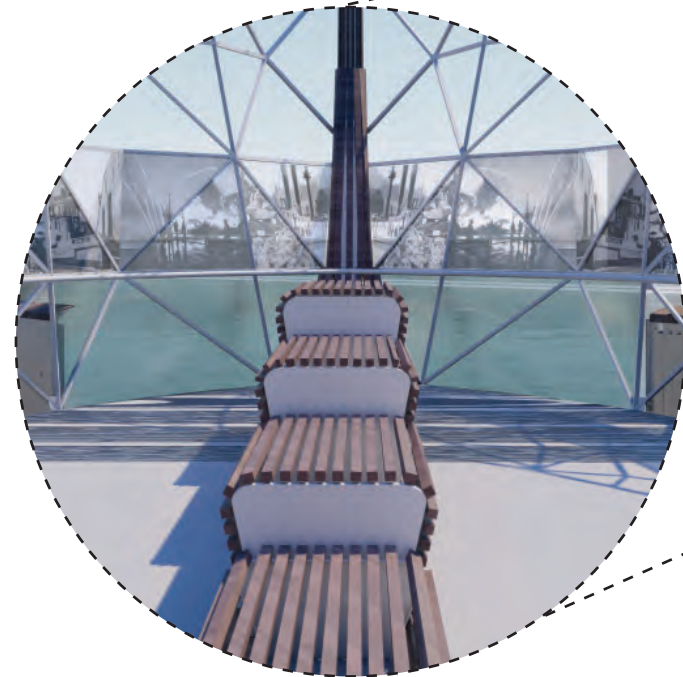
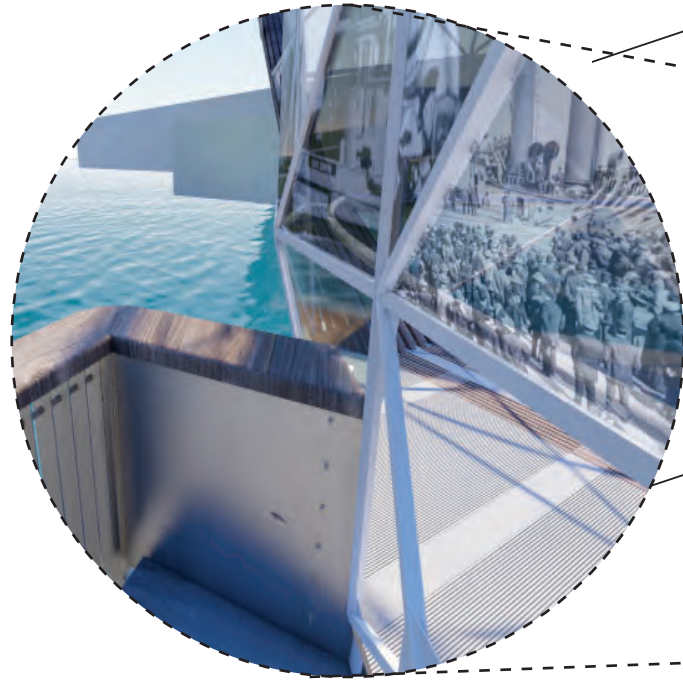
PROPOSED LIGHTING PLAN



night perspective

SITE PLAN - ELECTRICAL LIGHTING
SCALE: 1/4"=1'-0"

PROPOSED GUARD RAIL PLAN



guard rail turns to meet sculpture's steel hull at vertical 'rib'

metal plate bolted to guard rail support and stitch welded to the bow 'rib'

glass panel infill in tessellated steel hull between vertical 'ribs' up to 42"

guard rail ends perpendicular to vertical 'rib'

less than 4" gap between guardrail and



PERSPECTIVES



22'

VIEW FROM HARRISON STREET



Firefox

The Embarcadero

Harrison

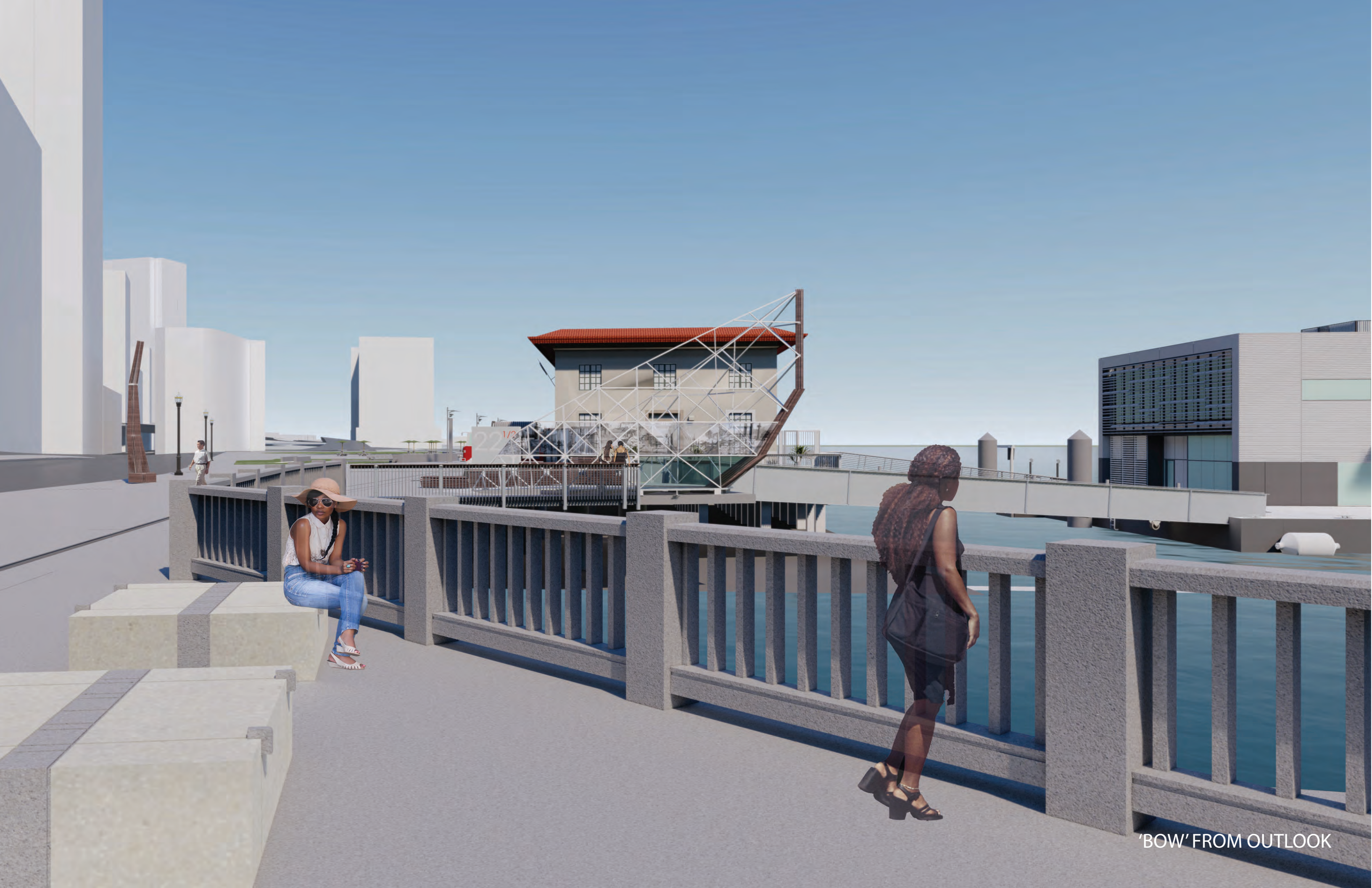
VIEW FROM BAY



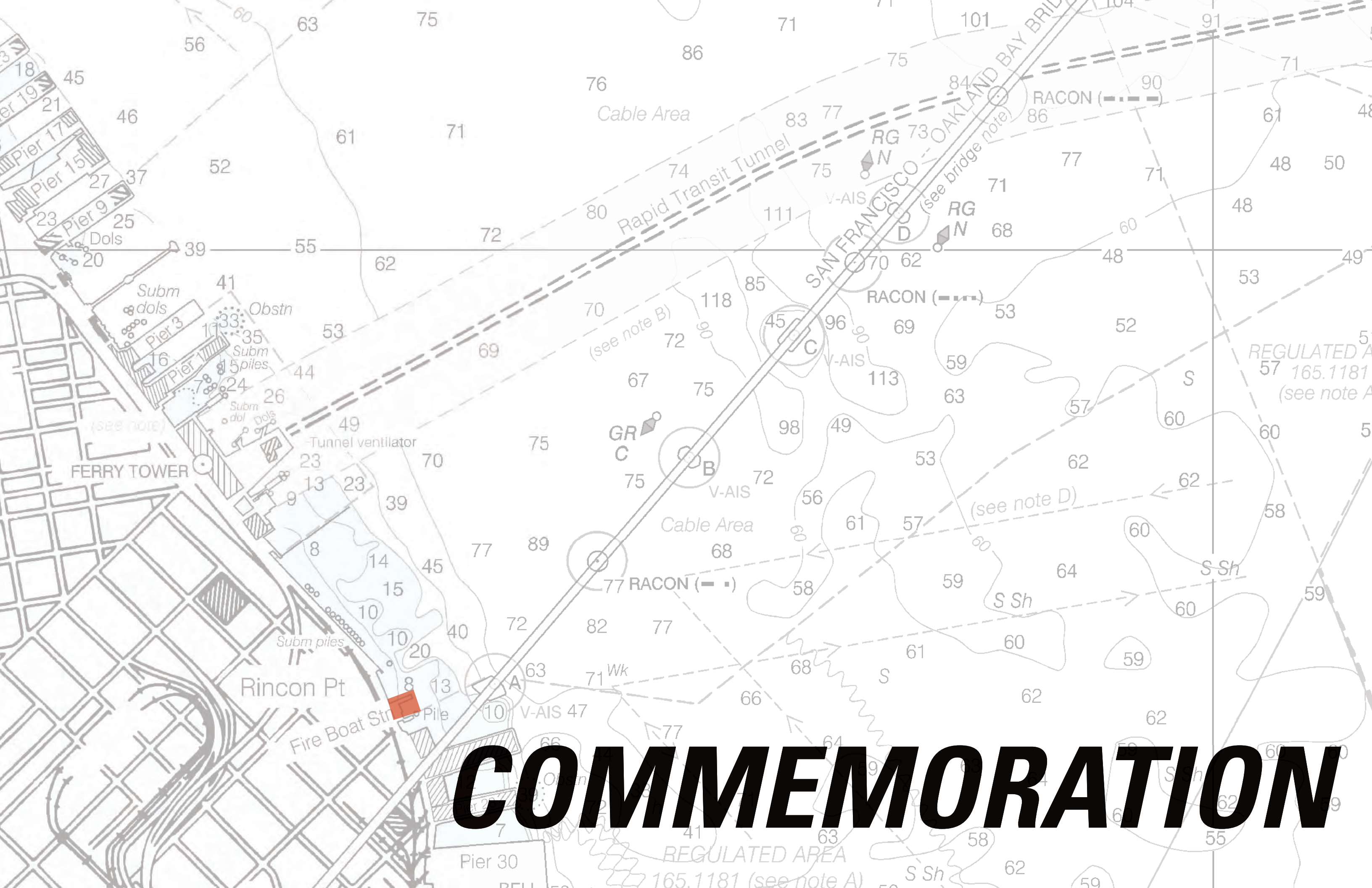
'BOW' WITH ITS DRAMATIC BACKDROP



ENTERING 'BOW'



'BOW' FROM OUTLOOK



COMMEMORATION



VIEW OF COMMEMORATIVE PANELS AT OVERLOOK

Quotes collected from LOMA PRIETA EARTHQUAKE STORIES

e.g.

"...When the quake started I remember thinking how amazing that this earthquake is strong enough to move my entire house. From the front door I was shocked to look down the street and see the asphalt as it appeared to be moving in waves..." —Joe Speaks June 25, 2018

Historical images about Firestation history & Earthquakes

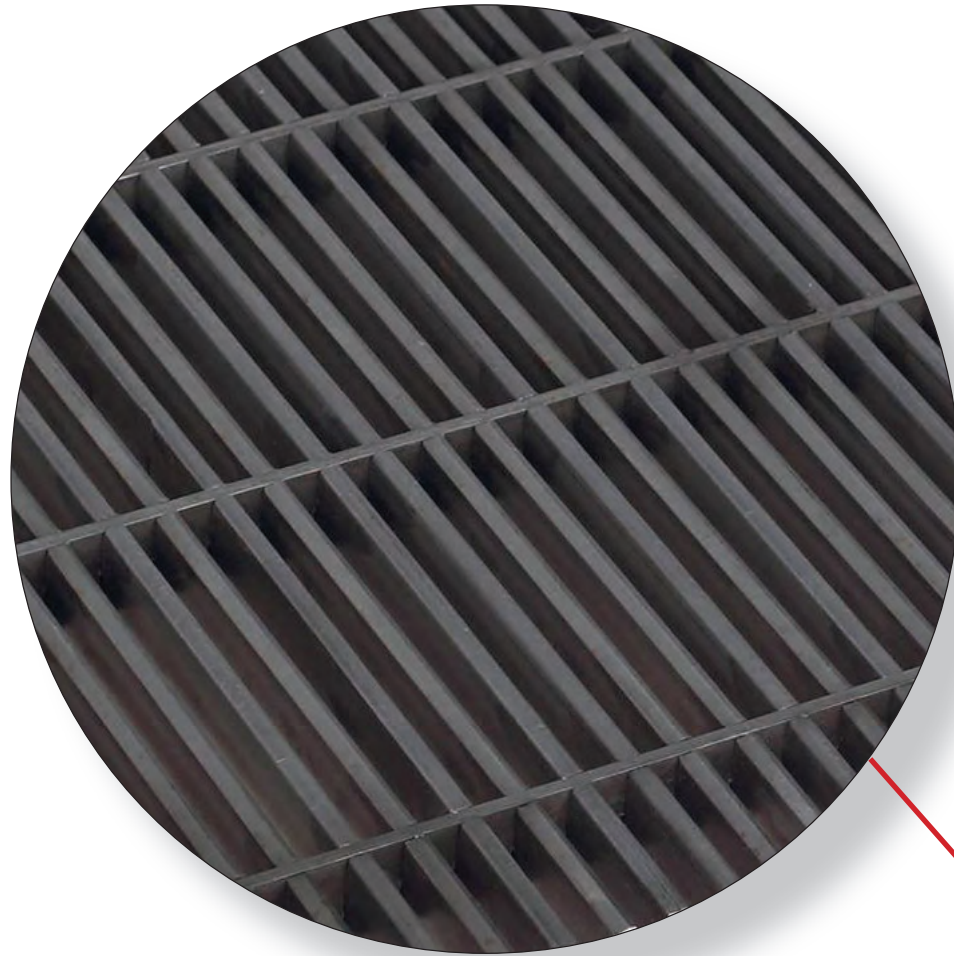




MATERIALS

METAL GRATE

McNICHOLS® bar grating
close mesh, ada compliant
carbon steel, hot-dipped galvanized



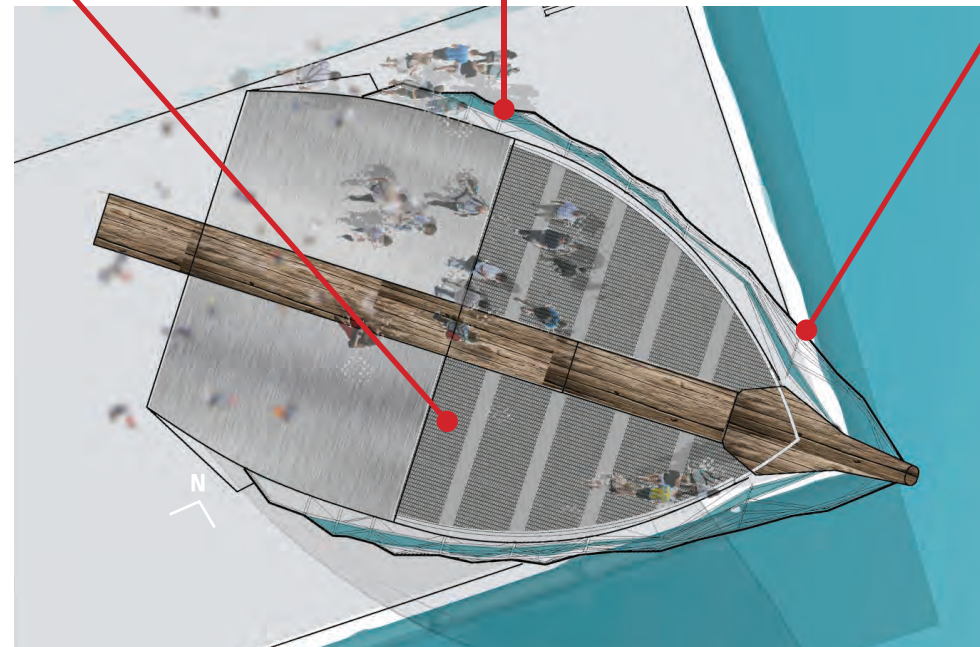
GLASS PANELS

9/16 (TM) tempered laminated with SGP interlayer
images and quotations printed direct to glass



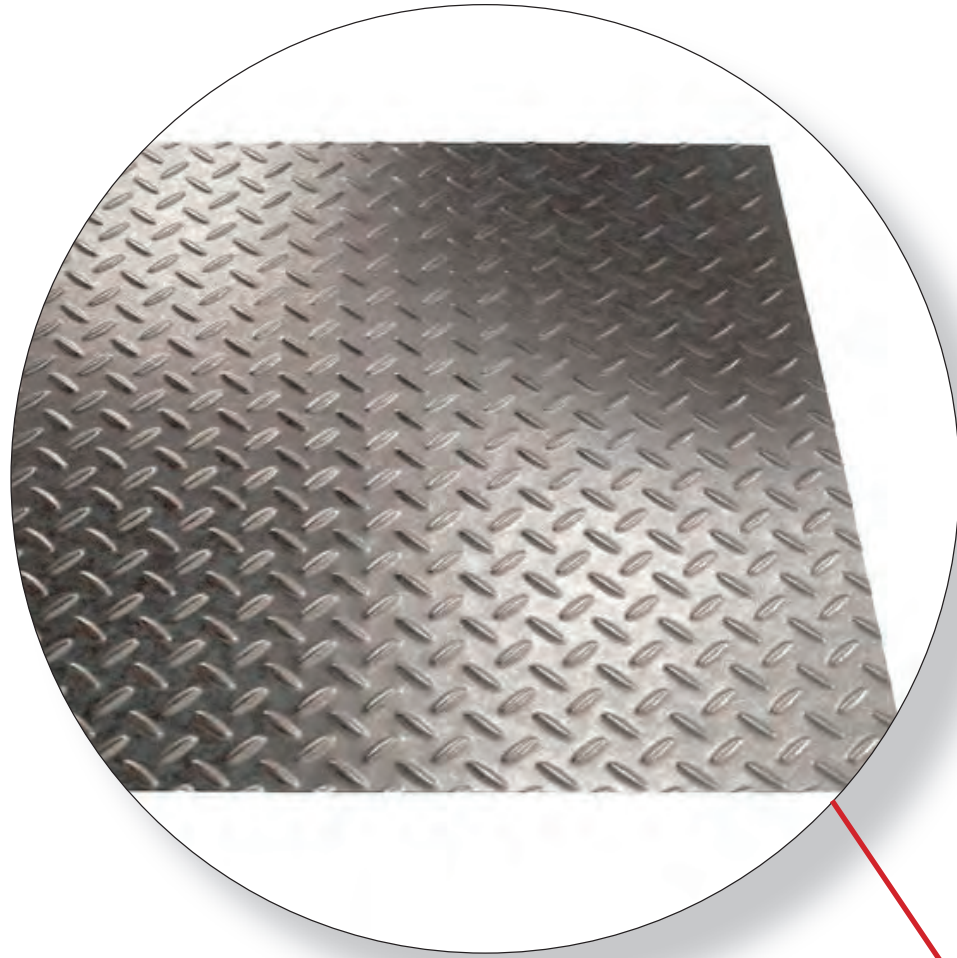
STEEL HULL

primed and painted steel tube
Tnemec epoxy based primer and Tnemec
industrial urethane top coat



METAL RAMP

hot-dipped galvanized steel diamond plate



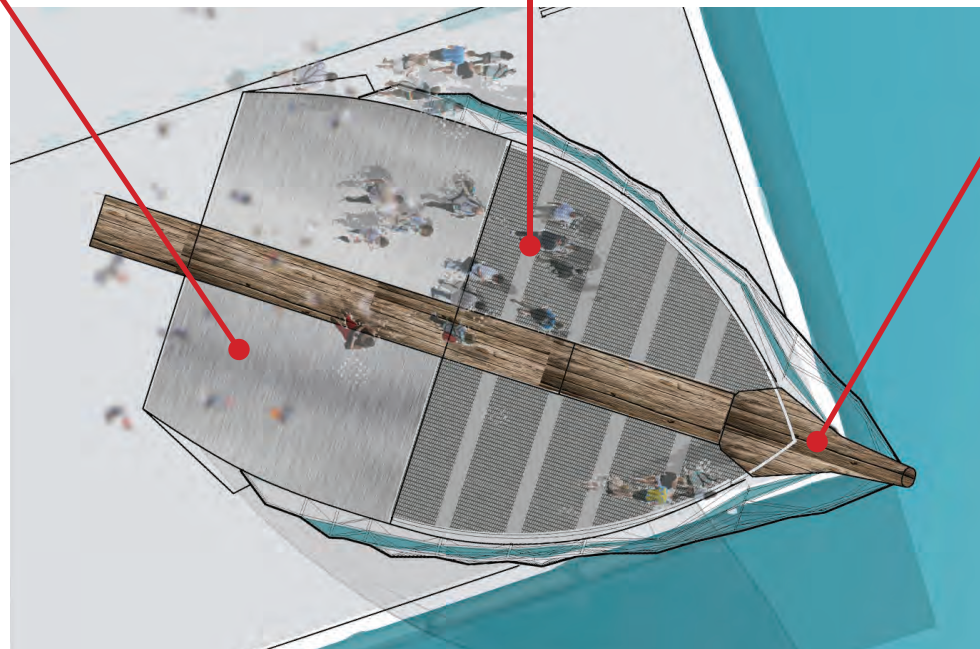
METAL FRAME

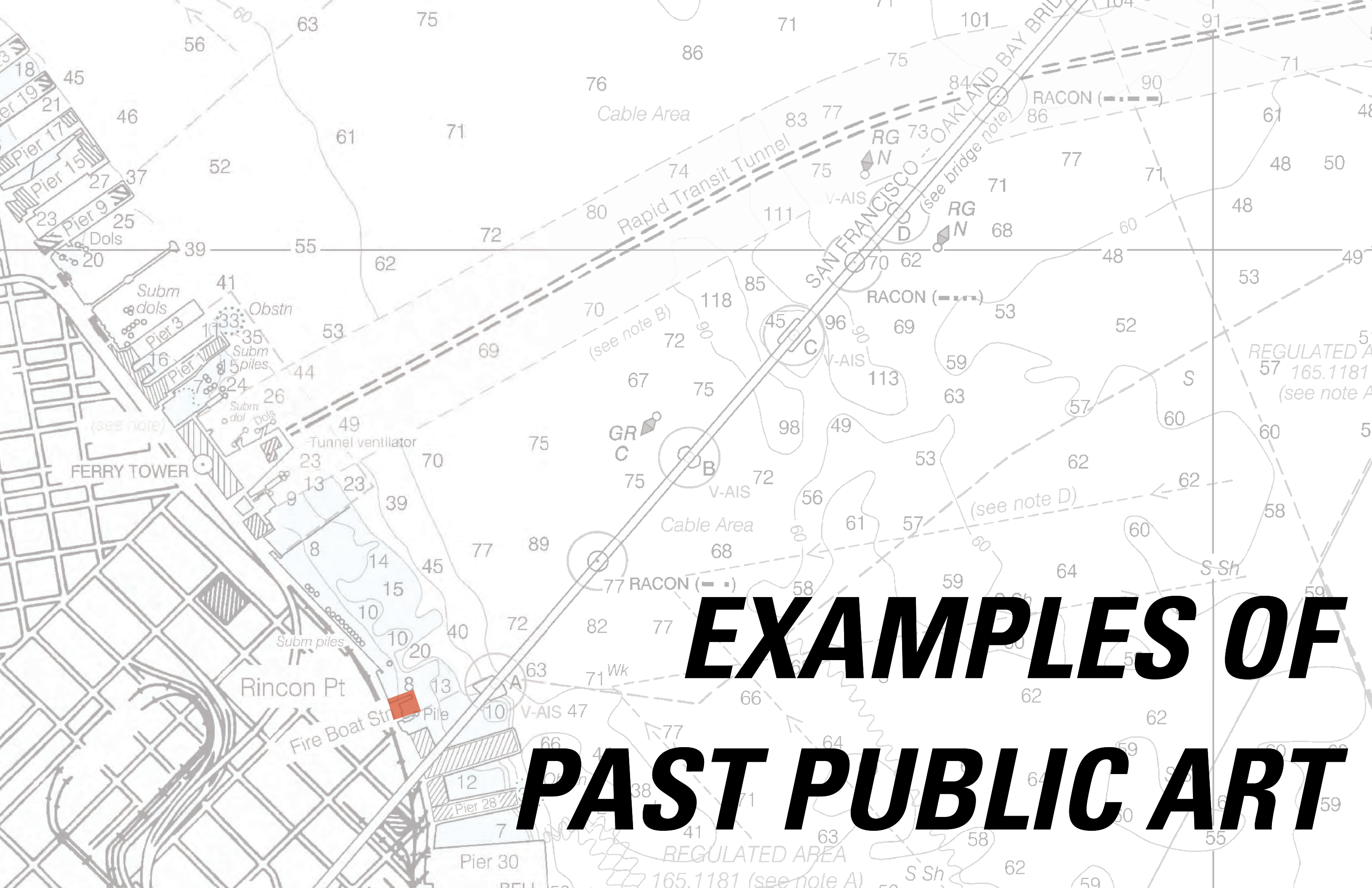
hot-dipped galvanized steel I-beam



WOOD CENTERPIECE AND BOW

marine teak lumber





***EXAMPLES OF
PAST PUBLIC ART***



