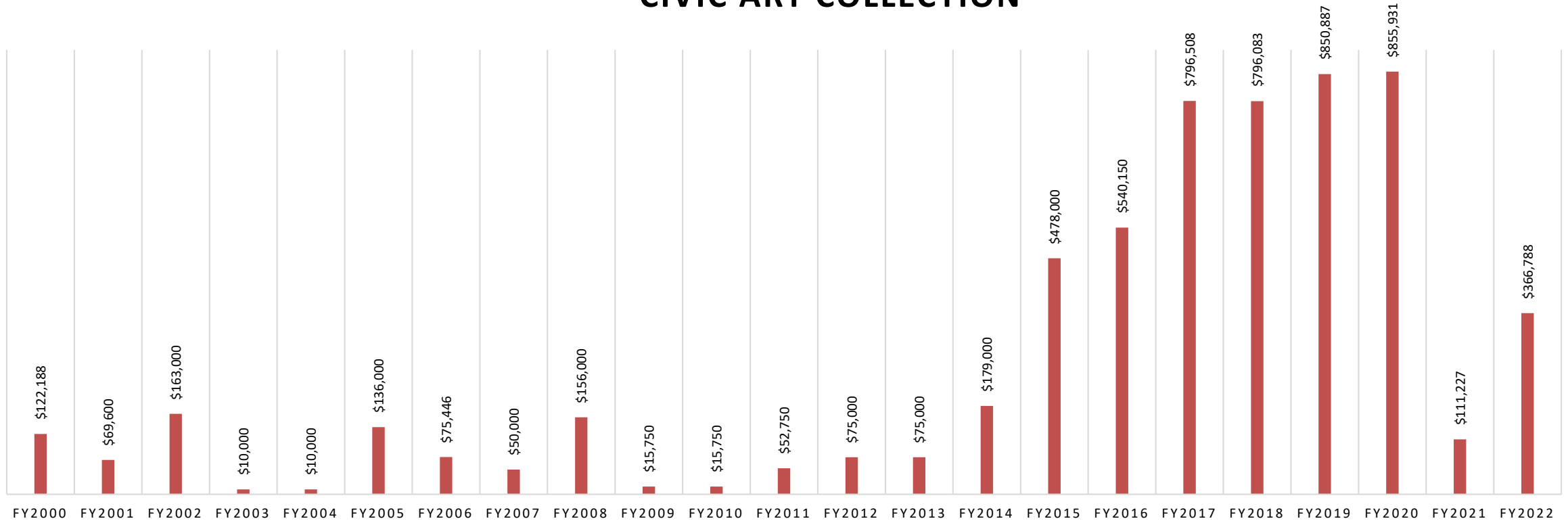


Civic Art Collection Annual Report Fiscal Year 2021



*Bayshore Boulevard,
2020 by Emily Fromm.
49 South Van Ness
Permit Center Offices*

CAPITAL BUDGET ALLOCATIONS CIVIC ART COLLECTION



Collections Total Need: Calculated over a 10-year period (as reported to the Controller and based on calculations using our Cost Modeling System) our total need is approximately \$1.4 Million annually.

Average CPC Project Funding: Detailed in the chart above. Our need historically exceeds our allocation. As of February 2020, staff anticipated total CPC funding at \$936,227 for FY21. As a result of the city's budget deficit due to the pandemic, actual total CPC funding was \$111,227 for FY21. This was a difference of \$825,000 – an 88% decrease.

Summary of Civic Art Collection Care Expenditures

| | |
|--------------------|---------------------|
| FY21 CAPITAL FUNDS | \$471,894.55 |
| FY21 OTHER FUNDS | \$267,242.84 |
| | \$739,137.39 |

| | |
|--------------------|-----------------------|
| FY20 CAPITAL FUNDS | \$1,211,203.19 |
| FY20 OTHER FUNDS | \$221,311.85 |
| | \$1,432,515.04 |

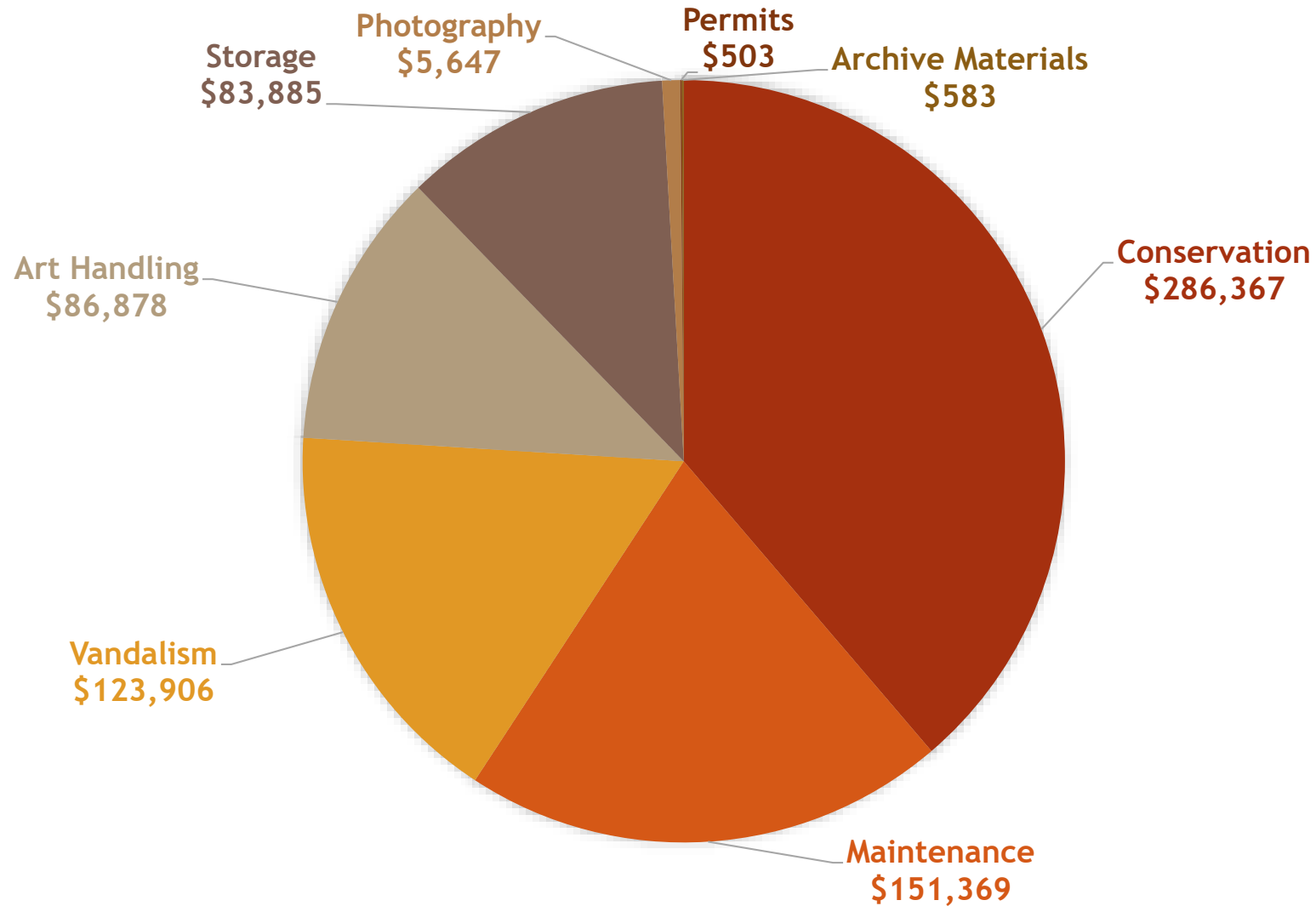
| | |
|--------------------|-----------------------|
| FY19 CAPITAL FUNDS | \$744,618.49 |
| FY19 OTHER FUNDS | \$628,231.84 |
| | \$1,372,850.33 |

Capital Funds = CAC's annual allocation from Capital Planning. These funds should be spent within the fiscal year they are allocated, but can carry over for larger projects.

Other Funds = Various other sources of funding for collections care projects. This can include the up to 10% Art Enrichment set-aside for conservation, project funds to relocate existing works on construction sites, work orders from other departments, add-backs, donations, and grants.

Expense Detail FY21

All Accounts = \$739,137



Monument Removals



Monument Removals



Monument Removals



- Collections related civil unrest costs total \$125,711 for FY21. (abated \$90,105 to grants and admin funds)
- Storage costs for the monuments that were brought down total \$20,510 for FY21.
- Ongoing annual storage costs for these monuments is \$15,000.

Monuments & Memorials Advisory Committee

- Public call for participation - worked with our partners at Recreation & Parks, Human Rights Commission, and the Mayor's Office to build the committee.
- Public call for consultant to assist with facilitating the committee, public outreach, and final reports.
- Continue to research and prepare reports on the monuments in the Civic Art Collection, gathers background information on national trends, and monitor other city's response to monuments in public space.

The screenshot shows the San Francisco Arts Commission (SFAC) website. The header includes the SFAC logo and navigation links: OUR ROLE & IMPACT, FIND OPPORTUNITIES, EXPERIENCE ART, GET INVOLVED, and a search icon. The left sidebar contains a menu of resources, with 'SF MONUMENTS AND MEMORIALS ADVISORY COMMITTEE AND FAQ' highlighted. The main content area features the title 'Monuments and Memorials in the Civic Art Collection', an update date of 'UPDATED 8/25/2021', and a paragraph announcing the committee members. Below this is a list of members, including co-chairs and other committee members. At the bottom, a note mentions a consultant team from Forecast.

sfac OUR ROLE & IMPACT FIND OPPORTUNITIES EXPERIENCE ART GET INVOLVED

COVID-RELATED ARTS AND CULTURE RESOURCES
SF MONUMENTS AND MEMORIALS ADVISORY COMMITTEE AND FAQ
AFFORDABILITY PROGRAMS
ARTS EDUCATION DIRECTORY
BECOMING A CITY SUPPLIER
WHERE ART LIVES CURRICULUM
ART IN STOREFRONTS TOOLKIT
ARTS FUNDING RESOURCES
REPORTS & DOCUMENTS

Monuments and Memorials in the Civic Art Collection

UPDATED 8/25/2021

The San Francisco Arts Commission, the Human Rights Commission, and San Francisco Recreation and Park Department are pleased to announce the members of the Monuments and Memorials Advisory Committee (MMAC).

MONUMENTS AND MEMORIALS ADVISORY COMMITTEE MEMBERS

- Ralph Remington, Director of Cultural Affairs (Co-Chair)
- Sheryl Davis, Executive Director, Human Rights Commission (Co-Chair)
- Phil Ginsburg, General Manager, Recreation & Parks Department (Co-Chair)
- Denise Bradley-Tyson
- Claudine Cheng
- Chuck Collins
- Morning Star Call
- Prof. Lisbeth Heas
- Roberto Hernandez
- Lian Ledia
- April McGill
- Ata'ateletaeoo McNeely (aka Afetasi)
- Lydia So
- Sharaya Souza
- Rev. Arnold Townsend

The MMAC will be working closely with a consultant team from Forecast to support the work of the Committee. Forecast will facilitate the MMAC, convene community meetings and deliver the findings, recommendations and guidelines the committee decides upon.

Disaster Service Work (DSW)

Civic Art Collection's staff completed 520 hours (13 weeks) of service in FY21.

- ▶ Tara Peterson, Registrar: Deployed 6 weeks, Full Time at the Joint Information Center as a Community Branch Field Specialist. Based out of Moscone South, Tara distributed and posted public health collateral throughout the city.
- ▶ Jenn Doyle Crane, Project Manager: Deployed 10 week, at 50% Time for the Entertainment Commission. Working remotely, Jenn set up the air table database, creating SOP's and data points for tracking, documenting and approving Just Add Music (JAM) permits for Shared Spaces and other outdoor locations.
- ▶ Allison Cummings, Senior Registrar: Deployed 2 weeks, Full Time with the Department of Public Health. Based at a Covid Hotel in SOMA, Allison worked the evening shift attending to non-critical Covid positive homeless patients and others needing to quarantine early in the pandemic.

Coit Tower Water Damage

Plumbing failure on the 5th floor at Coit Tower caused a significant water leak the weekend of September 26, 2020.

Staff documented the immediate after affects of the flood, and commissioned a condition report and environmental monitoring.

Staff advised on mural protection for hazardous materials abatement projects resulting from the leak.

Testing that will inform conservation approach is underway now and a treatment proposal including costs is pending.

The 2nd floor remains closed to the public.

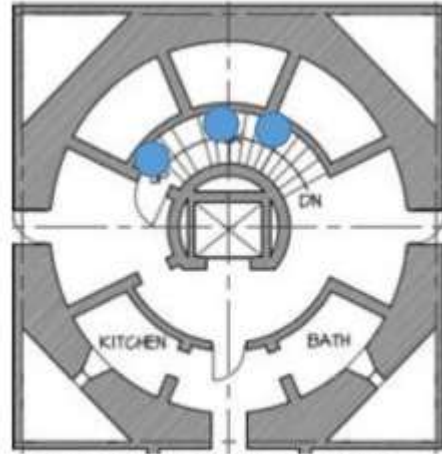


Figure 18: Blue dots shows efflorescence and other damages observed on the Powell Street mural located on the stairs from the first to the second floor.



Figure 19: Detail of growing efflorescence at the bottom of the Powell Street mural's stucco frame. Notice wall still looks wet.

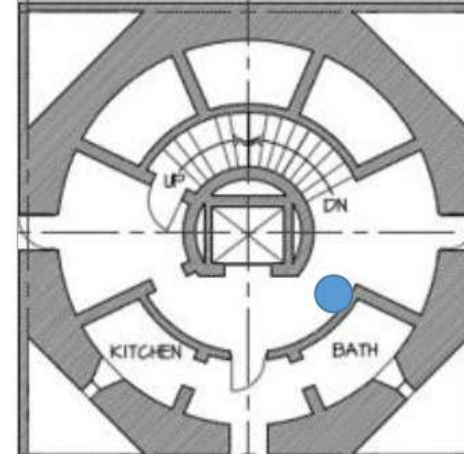


Figure 10: Blue dot shows efflorescence observed at the bottom of the stairs on the Outdoor Life mural.



Figure 11: Detail of efflorescence on the Outdoor Life mural.



Figure 20: Detail of glossy film observed on some areas of the mural.



Figure 21: Detail of glossy film and white drips on a different area of the Powell Street mural.



Figure 12: Detail of efflorescence on the Outdoor Life mural. Notice pattern followed by water coming from ceiling.



Figure 13: Detail of efflorescence on the Outdoor Life mural. Light accretions were emerging on the wall.

Vandalism Abatement

(Not Related to Civil Unrest)



- ▶ Haring at Moscone South - googly eyes 3 times! (funny not funny...)
- ▶ Philosopher's Way at McLaren Park
- ▶ Ship Shape Shifting Time at Islais Creek
- ▶ Sanaz Mazinani sculptures at 49 South Van Ness
- ▶ Other Usual Suspects: ALB Monument, McKinley Monument, Domestic Seating, Broadway Seating (Auspicious Clouds)

Conservation Assessments

- ▶ *Spider Pelt*, 1985 by Dustin Shuler located at the top of Moscone Parking Garage.
 - ▶ Piece was assessed for structural stability and treatment proposal from suspended scaffolding (20' swing stage). Small repairs were undertaken and full treatment proposal completed.
- ▶ *Red Gothic*, 1986 by Aristides Demetrios located at Muriel Leff Mini Park in the Richmond District.
 - ▶ Park is being re-designed, working with RPD on conservation and relocation of the artwork.
- ▶ *A World View*, 1989 by Martha Heavenston located at the Gene Friend Rec Center in SOMA (Deaccession).
- ▶ *GENESIS I*, 2018 by Christine Corday located at Moscone Convention Center.
 - ▶ Analysis of possible coatings to address corrosion and continued vandalism.

SPIDER PELT - DUSTIN SHULER

CONSERVATION TREATMENT

EXISTING CONDITIONS

During the assessment, it was apparent that the coatings are severely deteriorated and past their service life. Peeling, flaking, bubbled, blistered, and faded coatings were observed. The hardware was also inspected, and a total of 16 eye bolts were able to be turned freely by hand. These points of attachment were then inspected by a structural engineer who concluded the hardware was in operable condition and does not pose risk of failure, nor require any immediate replacement or maintenance. See Appendix A for the structural engineer's report.

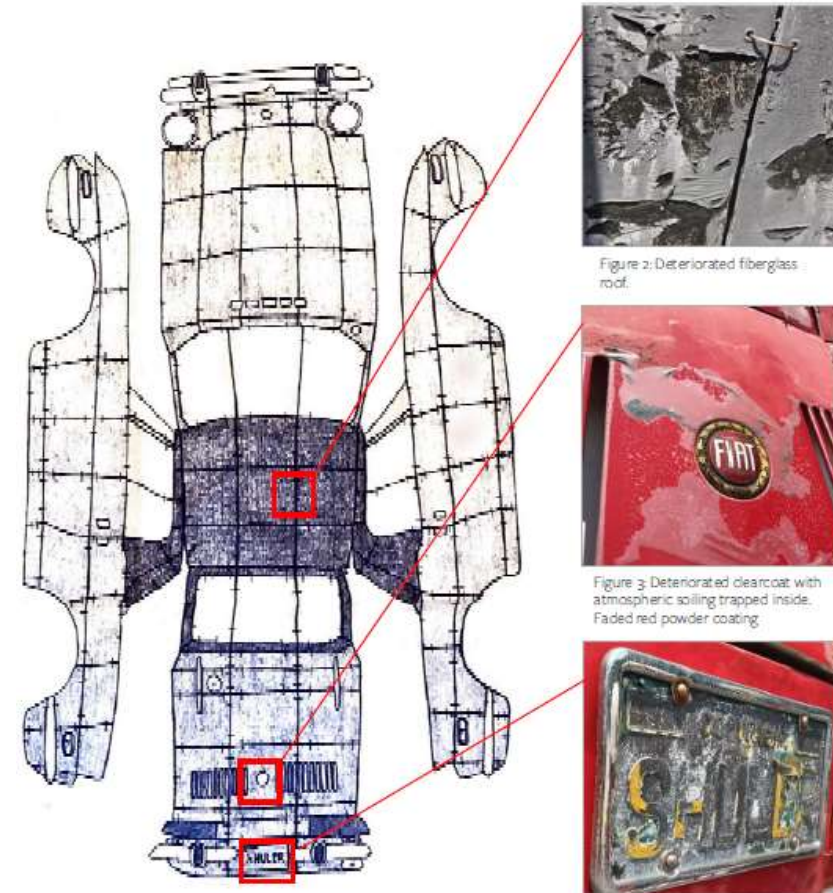


Figure 2: Deteriorated fiberglass roof.



Figure 3: Deteriorated clearcoat with atmospheric soiling trapped inside. Faded red powder coating.



Figure 4: License plate with deteriorated paint.

Figure 1: Sketch created by artist Dustin Shuler showing how the autobody is constructed flat.

Conservation Projects

- ▶ *Skygate*, 1985 by Roger Barr located at Pier 35-39, Embarcadero.
- ▶ *Origami Fountains*, 1999 by Ruth Asawa located in Japan Town.
- ▶ *Language of the Birds*, by Brian Goggin and Dorka Keehn located at Broadway and Columbus in North Beach.
- ▶ *La Rose des Vents*, 2015 by Jean-Michel Othoniel located at the Conservatory of Flowers in GGP.
 - ▶ Conservation and installation completed, the artwork was accessioned into the Civic Art Collection

TREATMENT REPORT: "Skygate" by Roger Barr



Overall View from Bay, Before (Left) and After (Right)

ORIGAMI FOUNTAINS - RUTH ASAWA

BEFORE & AFTER



Figure 13: Overall view of the fountain nearest to Post Street before treatment.



Figure 15: Overall view of the fountain nearest to Sutter Street before treatment.



Figure 16: Overall view of the fountain after treatment.



Figure 14: Overall view of the fountain after treatment.

Conservation & Relocation

- ▶ *Earth, Air, Sea*, 1986 by Mary Fuller previously located at the corner of Sloat and Great Highway.
 - ▶ Sculptures were carefully removed to storage for conservation and eventual reinstallation at a modified location as a part of the PUC Westside Pump Station rebuild.
- ▶ Three large works on paper, 1997 by Emmanuel Montoya previously located at Mission Branch Library.
 - ▶ Works were removed to storage for reframing and eventual reinstallation at the Mission Branch Library.



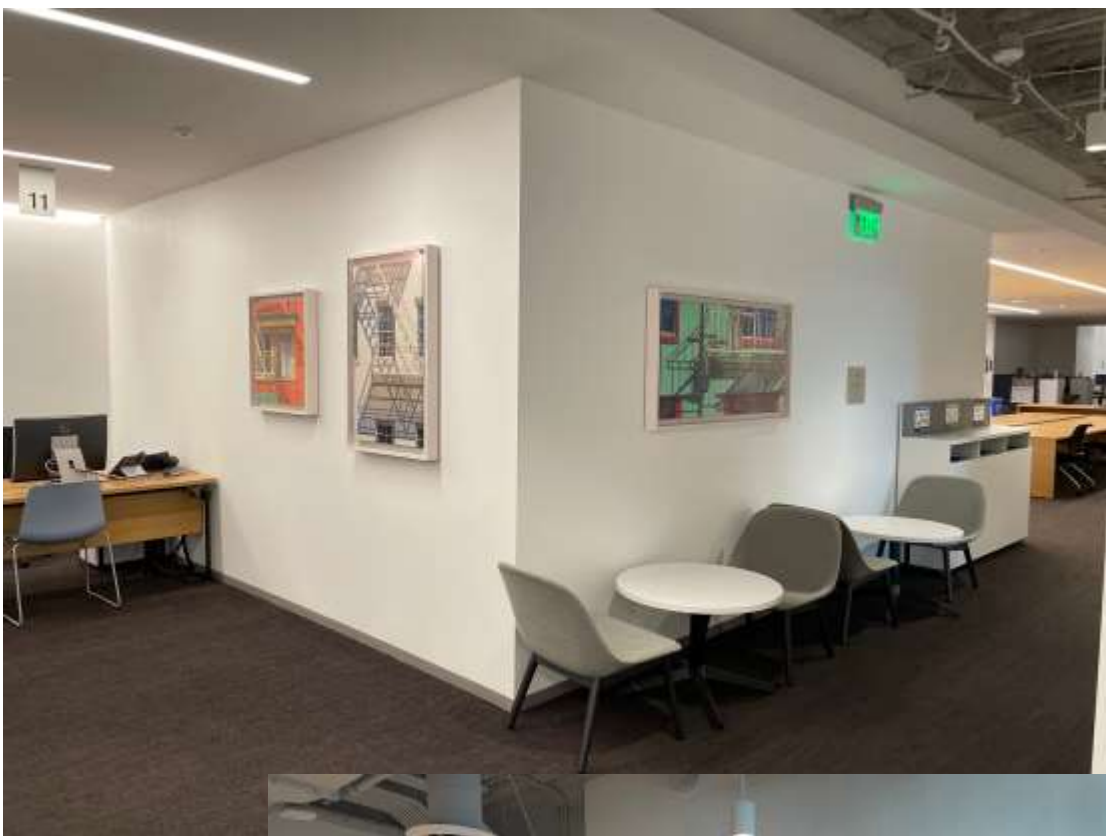
Art Enrichment Projects

Collection's staff involved in all AE projects, from proposal to installation.

- ▶ Central Subway projects
- ▶ Ongoing projects at SFO
- ▶ 49 South Van Ness projects
 - ▶ assisted in 2-D acquisitions, framing and installation coordination
- ▶ Collections Project Manager oversaw the implementation of the mural by Julie Chang at Willie Woo Woo Wong Rec Center.



49 South Van Ness
2-D Project - 32 new
artworks.



Collection Management & Administration FY21

ACCESSIONS

5 Individual artworks completed and accepted into the Civic Art Collection.

148 Archive records created and managed in EmbARK for these works, ephemera, and new projects.

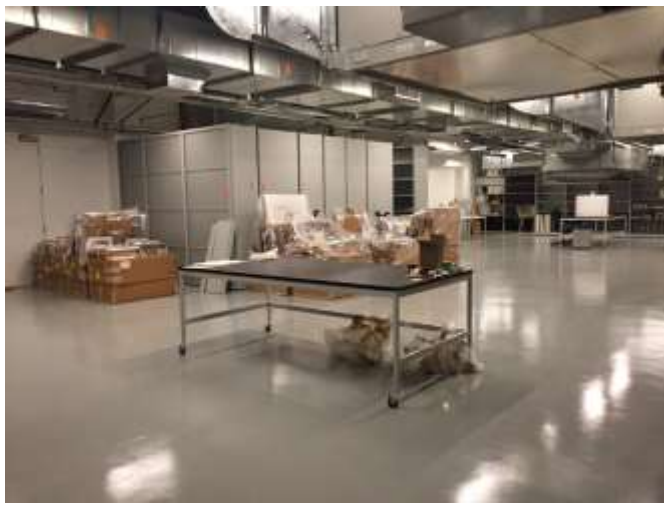
DEACCESSIONS

2 Artworks were formally deaccessioned - Martha Heavenston & Joe Mangrum (the Mangrum is being re-fabricated)

MOVEMENT

Staff administered multiple loan and relocation projects, documenting and relocating 209 artworks from both the portable and sited collections.

Staff relocated approximately 600 artworks into our on-site storage space at 49 South Van Ness. Work continues on unpacking and preparing these works for storage.



Portable
Collection in
Storage at
401 Van Ness

FY22 Looking Forward...

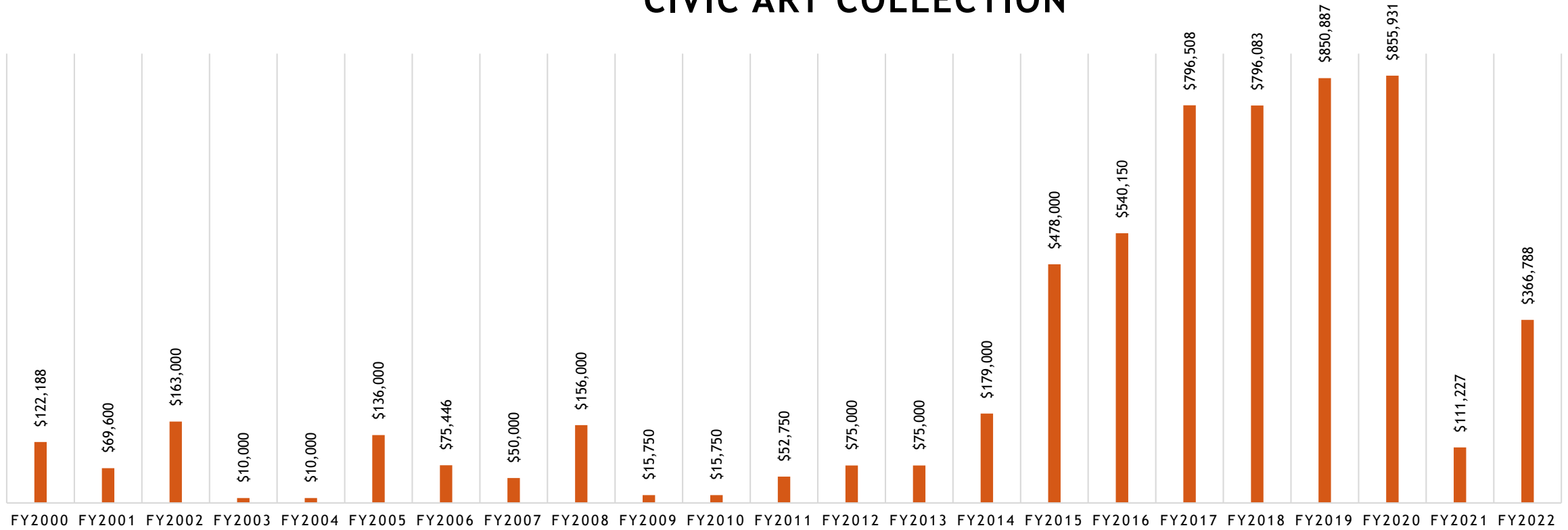
Continue active conservation and maintenance projects, utilizing a triage approach that takes into account funding levels.

Undertake monument & memorials evaluation process, and administer the MMAC.

Continue the inventory and collection move of thousands of objects into our onsite storage facility.

Continue to advocate for collections care funding, and support efforts to re-establish pre-pandemic thresholds.

CAPITAL BUDGET ALLOCATIONS CIVIC ART COLLECTION



NY Times
Article
About the
Collection

Wall to Wall
Inventory
Complete

Cost
Projection
Model

- Anticipated total CPC funding at \$936,227 for FY21. Actual total CPC funding was \$111,227 for FY21. This was a difference of \$825,000 – an 88% decrease.
- Anticipated total CPC funding at a similar level (in the absence of the pandemic crisis) for FY22. Actual total CPC funding is \$366,788 for FY22. A difference of approximately \$569,439.
- Anticipated total CPC funding at \$747,628 for FY23. Had trends continued, this is a difference of approximately \$188,599.

TOTAL ESTIMATED IMPACT: **-\$1,583,038** as a result of pandemic related shortfalls