

SAN FRANCISCO INTERNATIONAL AIRPORT COURTYARD 3 CONNECTOR

SAN FRANCISCO CIVIC DESIGN REVIEW | PHASE 3

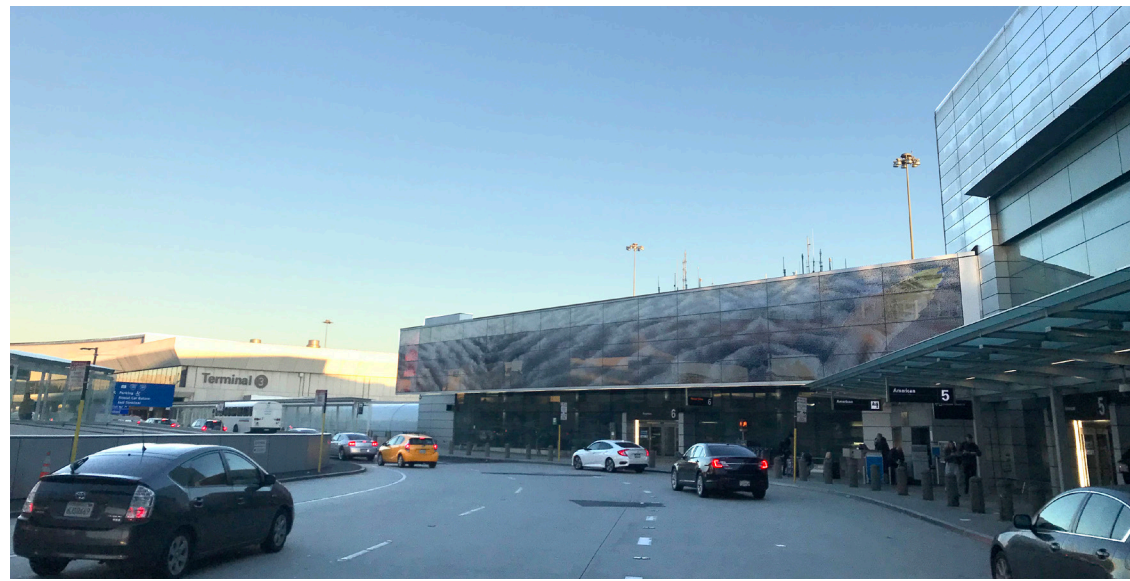
JUNE 01, 2020



MAY 22, 2020 INFORMAL

SITE & CONTEXT

AIRSIDE AERIAL



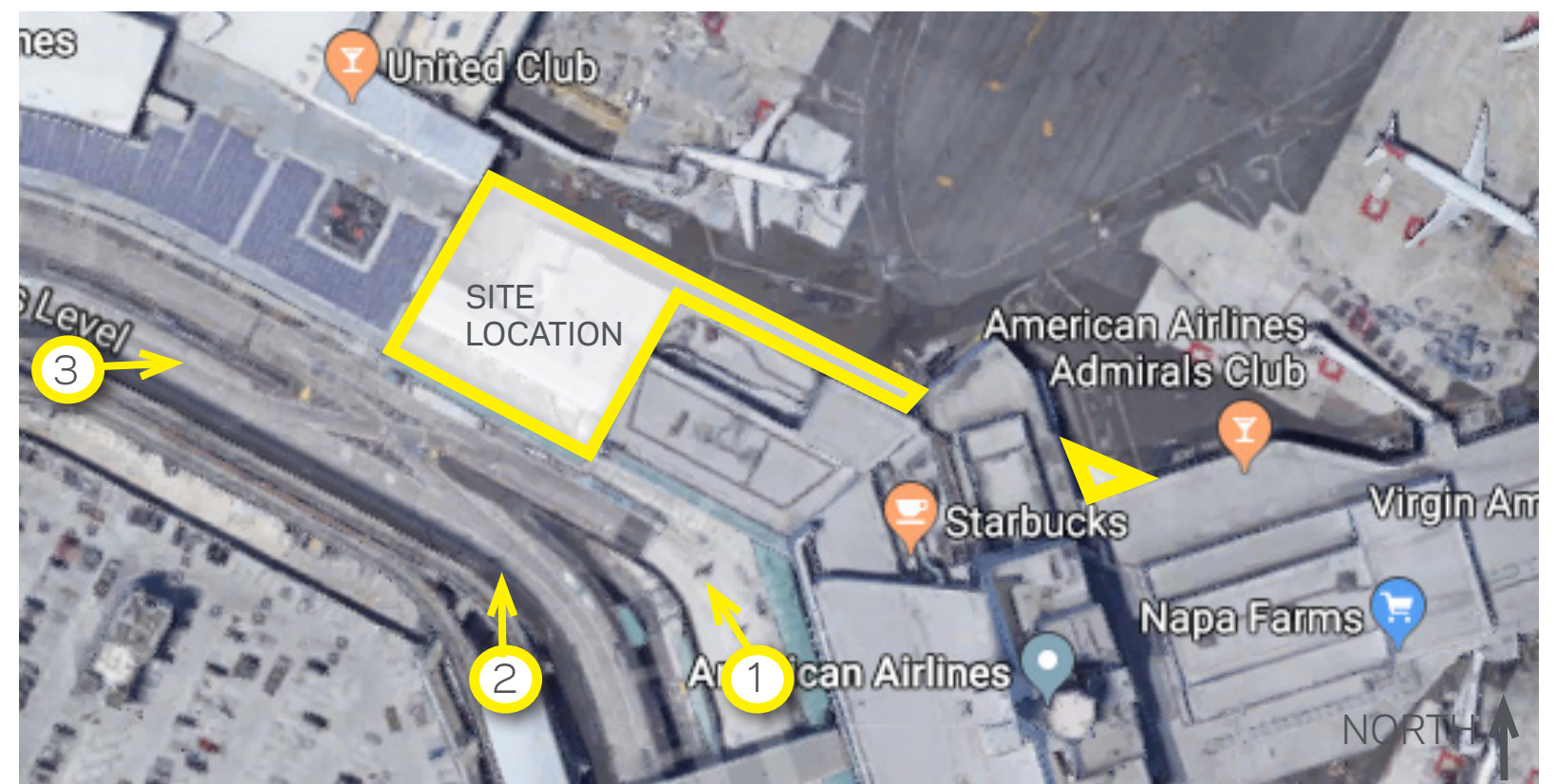
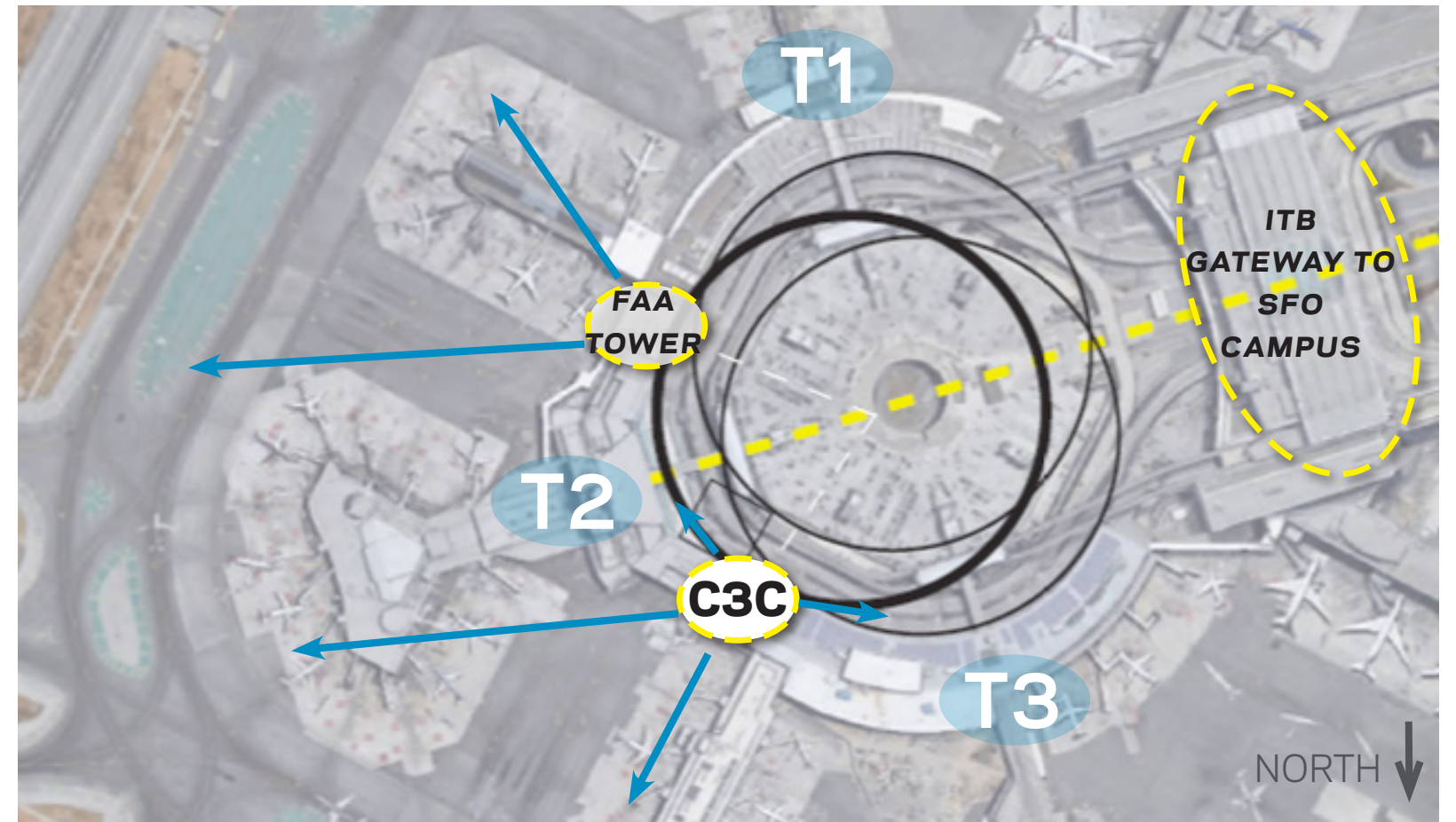
1. DEPARTURES LEVEL APPROACH



2. VIEW FROM PARKING GARAGE / AIR TRAIN PLATFORM



3. VIEW FROM INSIDE AIRTRAIN





“Motion to approve Phase #2 of the SFO Courtyard 3 Connector (C3C) Project contingent upon **the consideration of the proportionality and rhythm of the vision glass and the light glass.**”

Civic Design Review Committee - December 16, 2019 - Minutes



LANDSIDE AT EVENING







DYNAMIC GLAZING TINT STATES

APPROXIMATE DURATIONS PER YEAR



TINT STATE 1 - CLEAR
EQUIVALENT OF 292 DAYS PER YEAR (MOST OF THE TIME EACH DAY)



TINT STATE 2
EQUIVALENT OF 26 DAYS PER YEAR


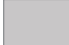





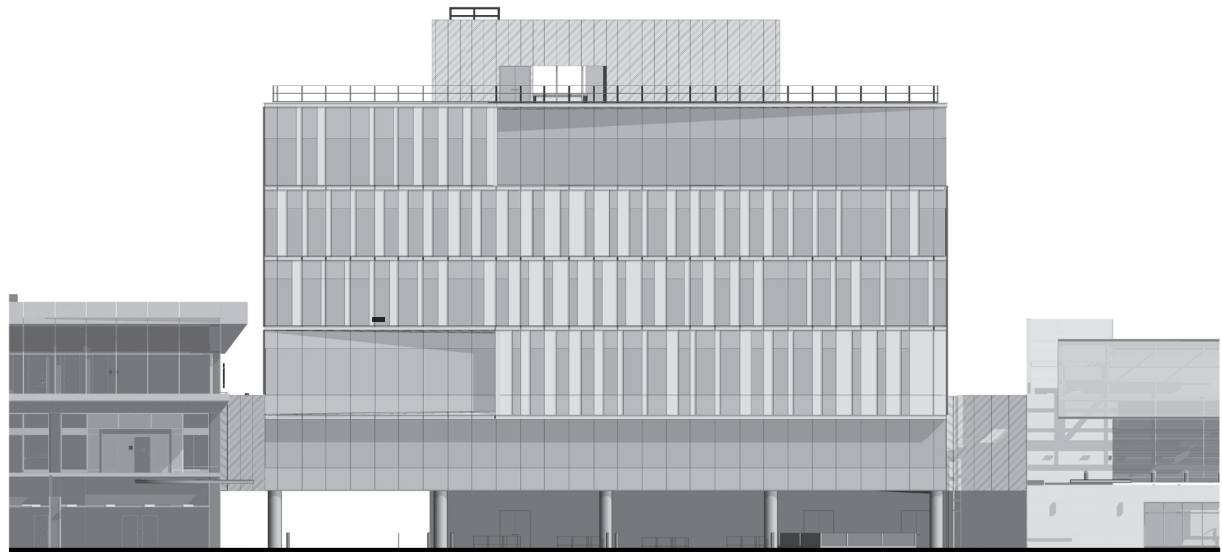
TINT STATE 3
EQUIVALENT OF 29 DAYS PER YEAR



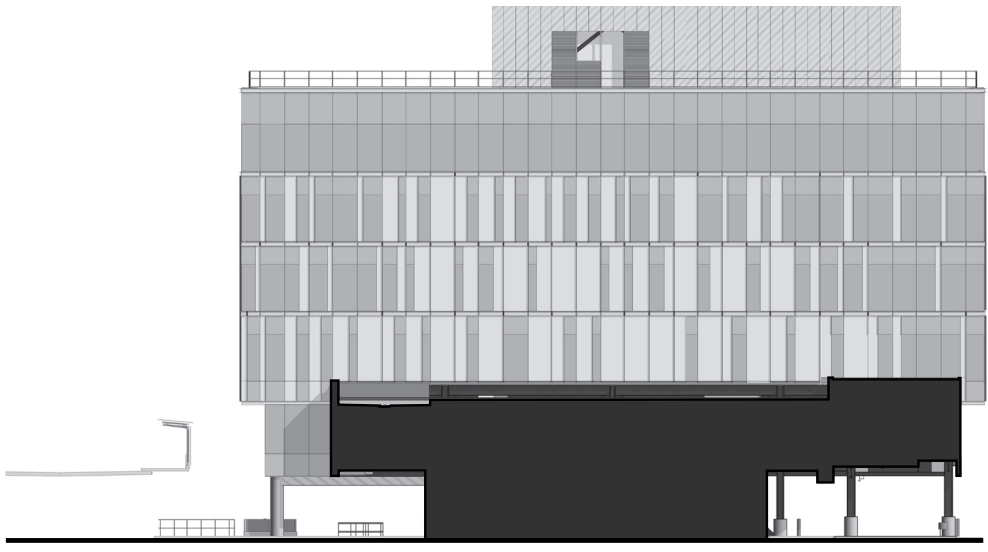
TINT STATE 4 - DARKEST
EQUIVALENT OF 18 DAYS PER YEAR (LEAST OF THE TIME EACH DAY)

BUILDING ELEVATIONS

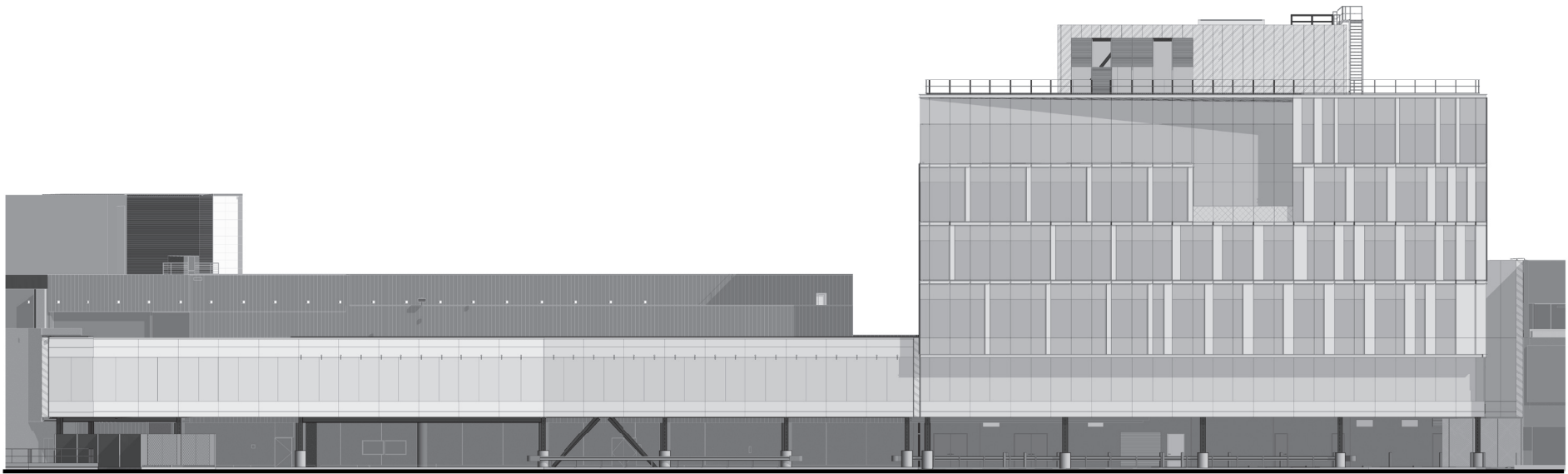
-  DYNAMIC GLAZING (VISION)
-  DYNAMIC GLAZING (SPANDREL)
-  GLASS SPANDREL (ACID ETCH ON SURFACE 3)
-  LIGHT GRAY METAL PANEL
-  VISION GLASS (AIRSIDE ONLY)



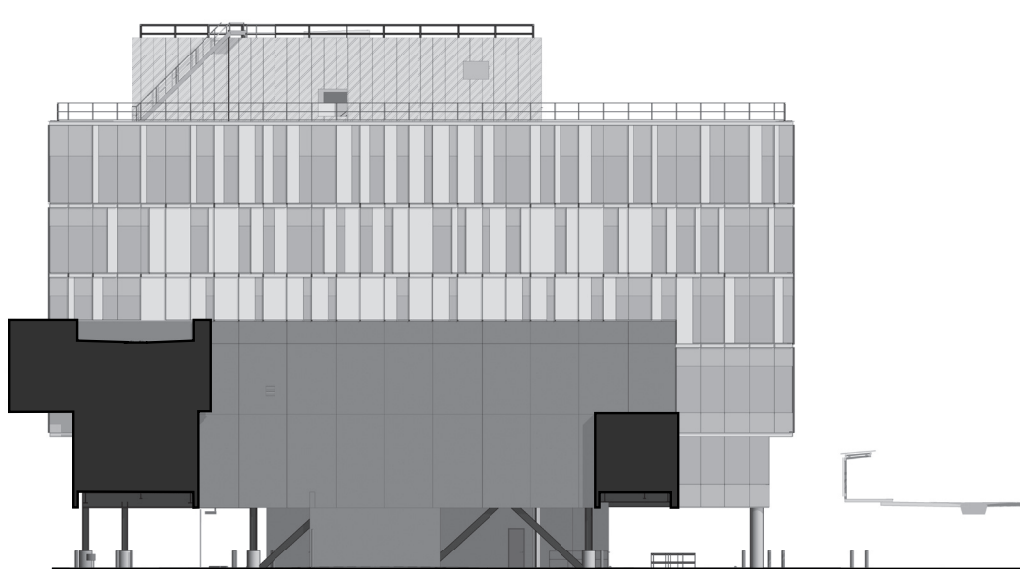
SOUTH (LANDSIDE)



EAST (TERMINAL 2)



NORTH (AIRSIDE)



WEST (TERMINAL 3)



THANK YOU!