



# Castro Mission Health Center Seismic Upgrade

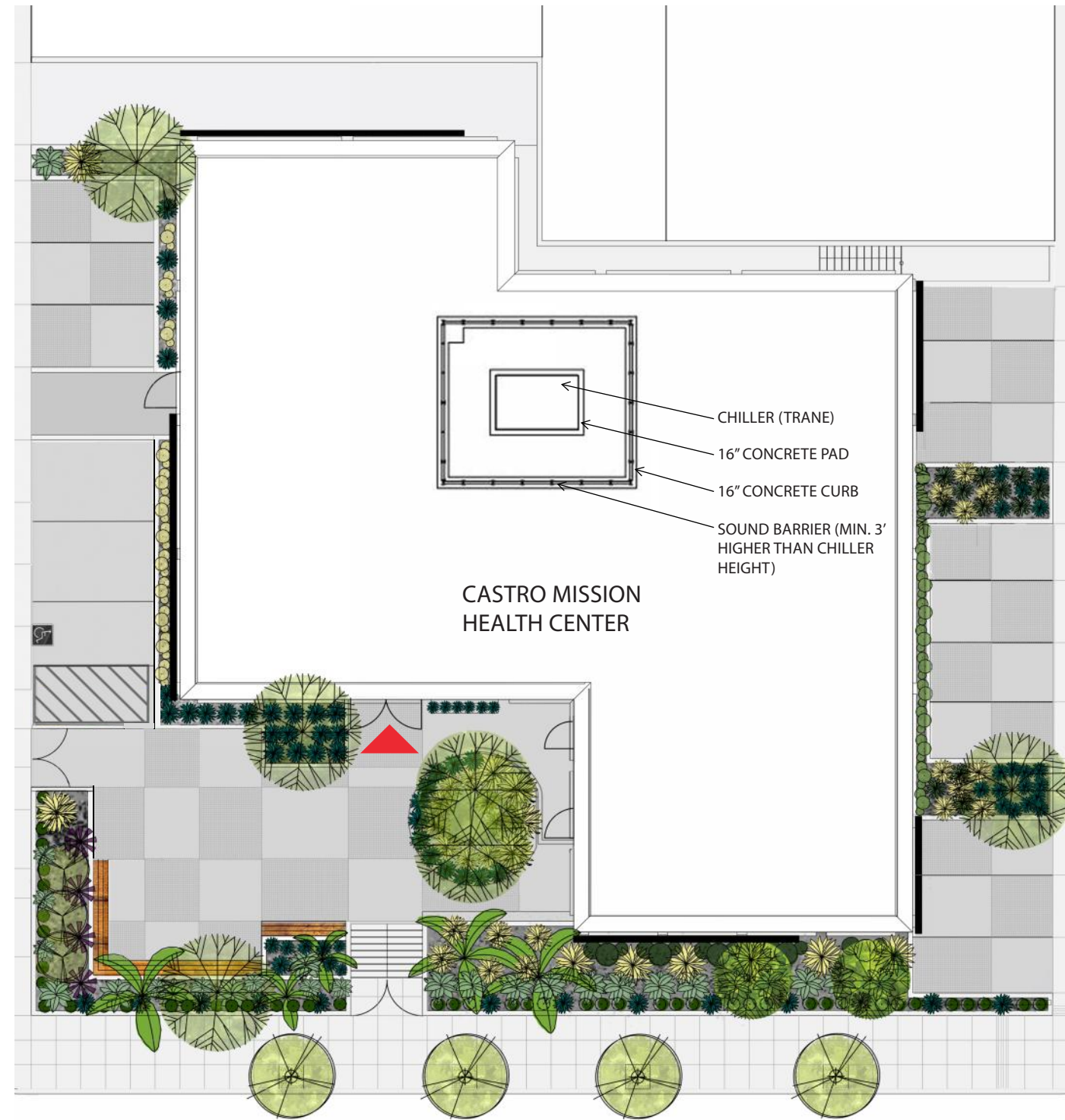
Civic Design Review - Phase 3 Update


December 16th, 2019

# Summary of Revisions

---

1. Addition of an acoustic screen enclosure around the new roof top chiller.




 CAMERA3  
 VIEW FROM 17TH STREET AND POND


 CAMERA2  
 VIEW OF MAIN ENTRY FROM 17TH STREET



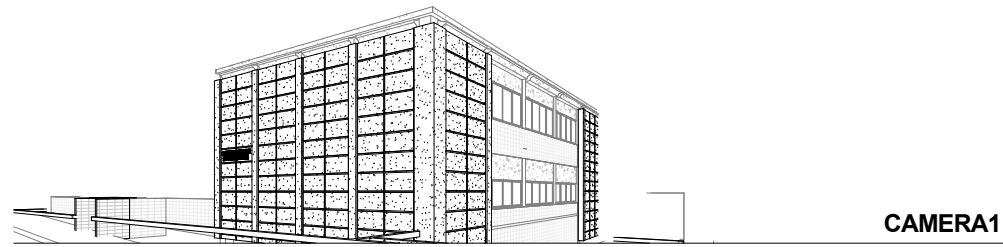
Phase 3 Update -Proposed Roof Plan



VIEW OF MAIN ENTRY FROM 17TH STREET/ CAMERA2



VIEW FROM 17TH STREET AND POND/ CAMERA3



CAMERA1



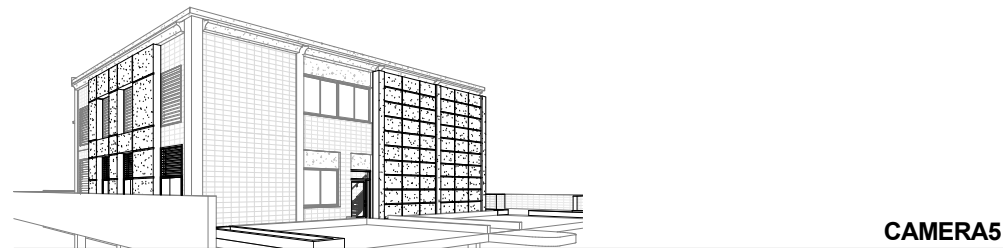
CAMERA2



CAMERA3



CAMERA4

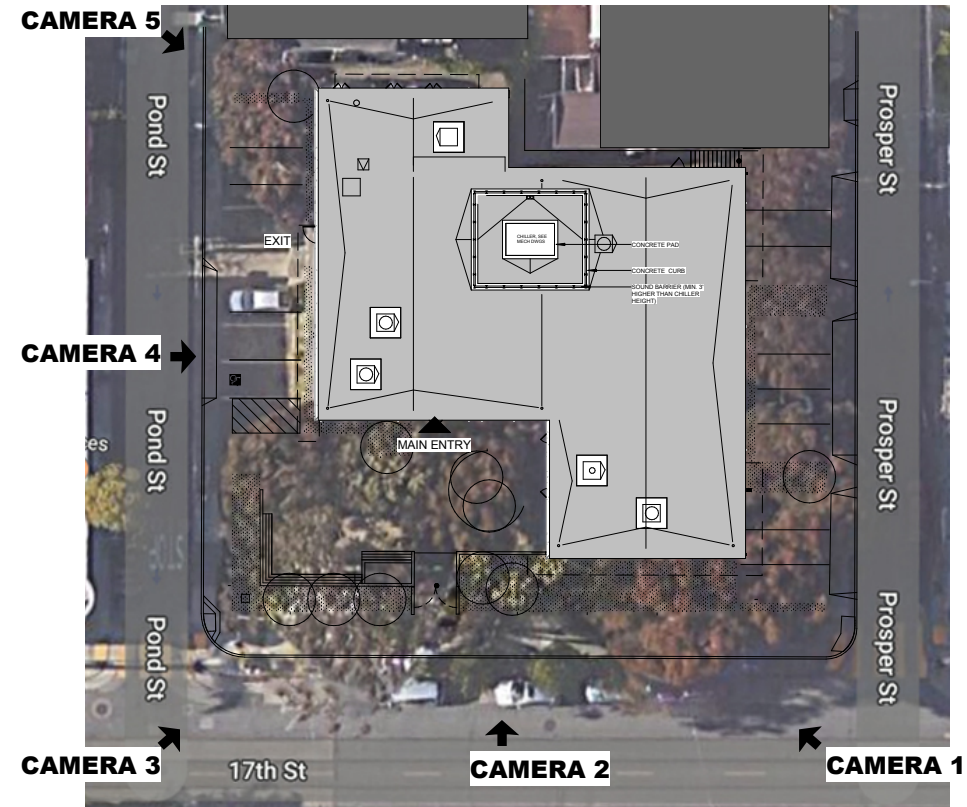


CAMERA5



CAMERA6

NOTE:  
1. THE DIMENSIONS OF THE CHILLER'S LOCATION ARE FROM THE EXTERIOR EDGE OF CONCRETE DECORATED BEAMS ON THE ROOF. (BASED ON MEP DRAWINGS)



84" HIGH CHILLER( ROTATED ORIENTATION)  
120" SCREEN DUE TO THE PROXIMATITY TO THE ADJACENT HOUSES.  
CHILLER TO SIT ON A 16" CONCRETE PAD.  
SCREEN TO SIT ON A 16" CURB.

ASSUMED SCREEN HEIGHT= 136" (APPROX 11' ABOVE ROOF)

IEWS TO CHECK THE CHILLER LOCATION WITHOUT TREES

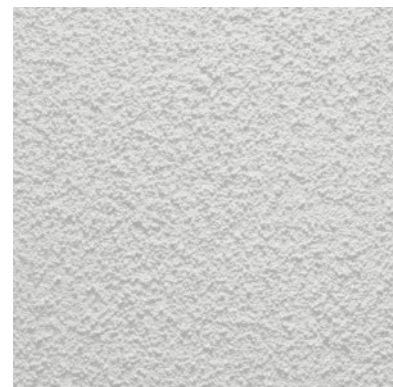


Silver Gray 16

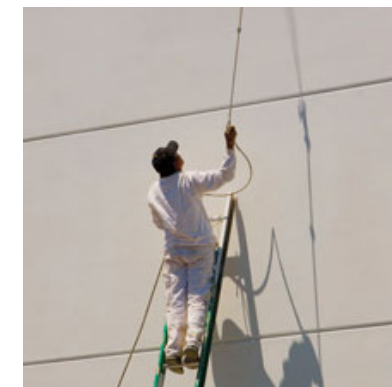


The chiller acoustic screens (Sound Barriers)  
The color code: Gray, RAL 7040  
match with lighter cement plaster.

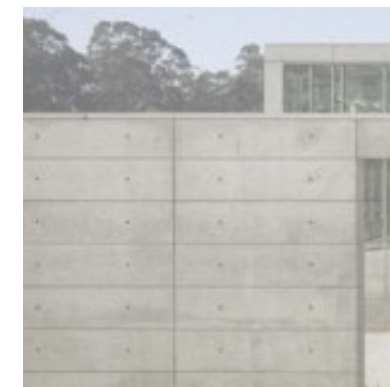
Pewter 3016L



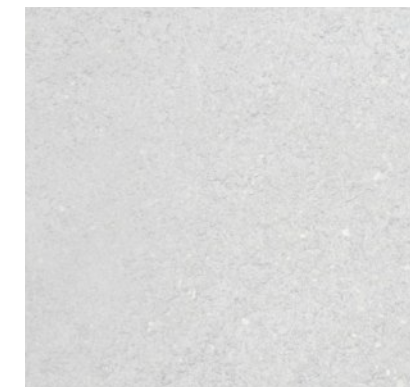
Integral Color Cement Plaster



Elastomeric Paint Colors to Match  
Integral Color Cement Plaster



New CIP Concrete



Existing Concrete, cleaned

Phase 3 Update- 17th Street Elevation



## Phase 3 Update - Prosper Street Elevation





## Phase 3 Update - Pond Street Elevation