



SAN FRANCISCO
PUBLIC
WORKS



CASTRO STATION ACCESSIBILITY IMPROVEMENTS

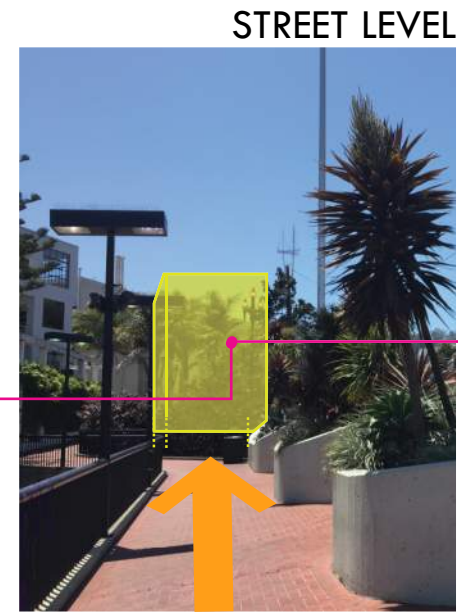
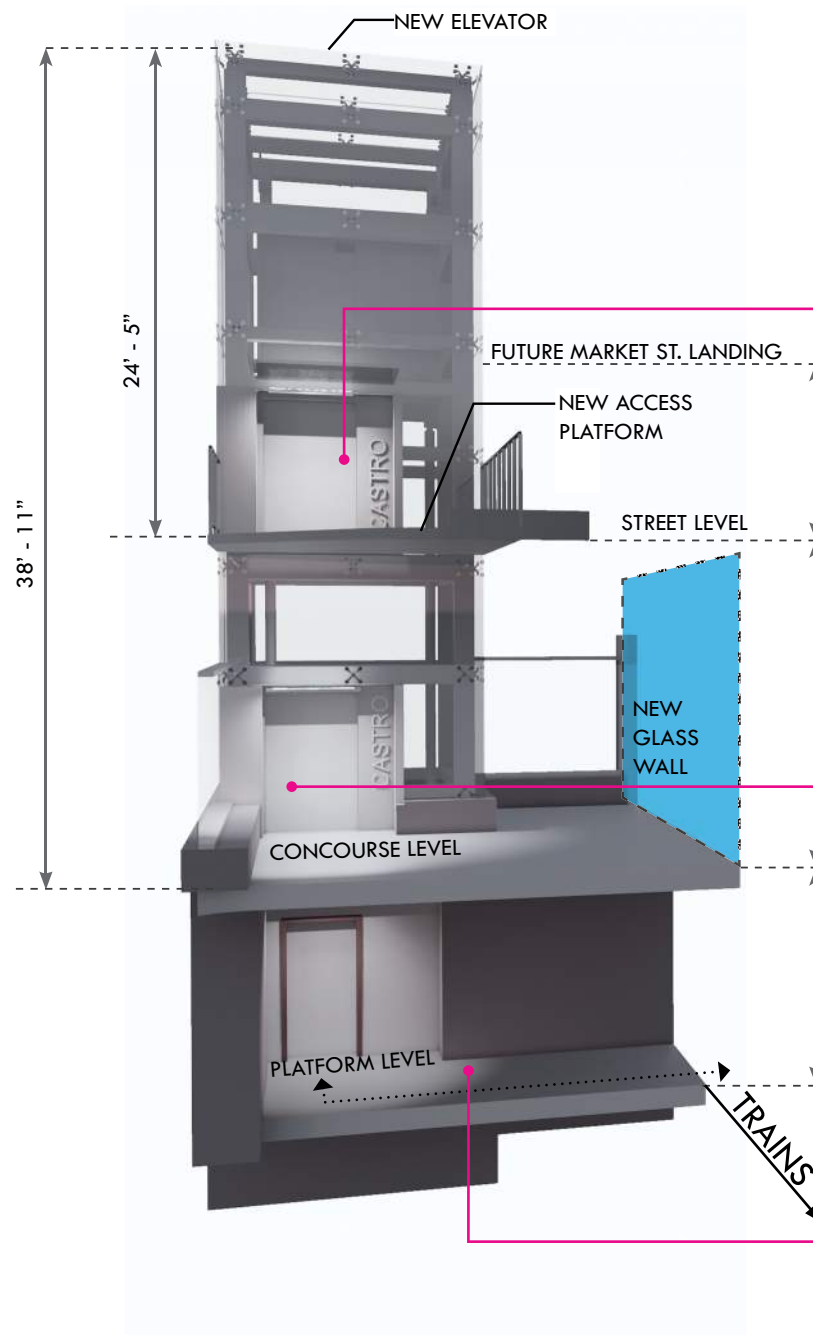
CIVIC DESIGN REVIEW DECEMBER 2020

CONTENTS

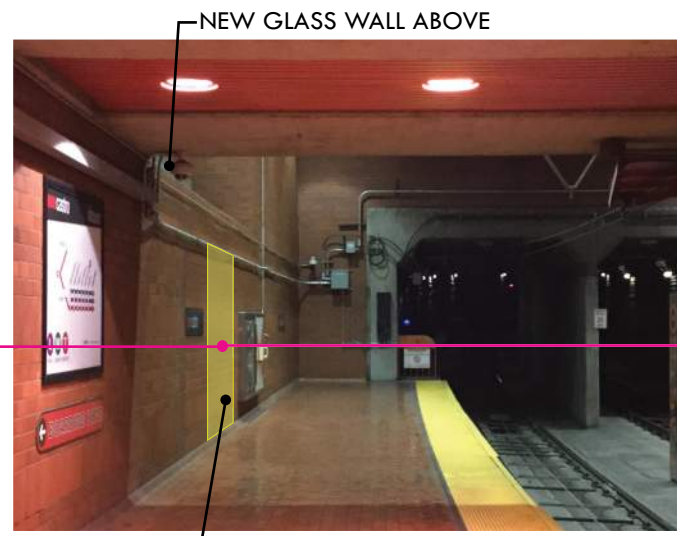
1. PROJECT OVERVIEW
2. SCOPE OF WORK
3. PLANS
4. RENDERINGS
5. SITE DESIGN

PROJECT OVERVIEW

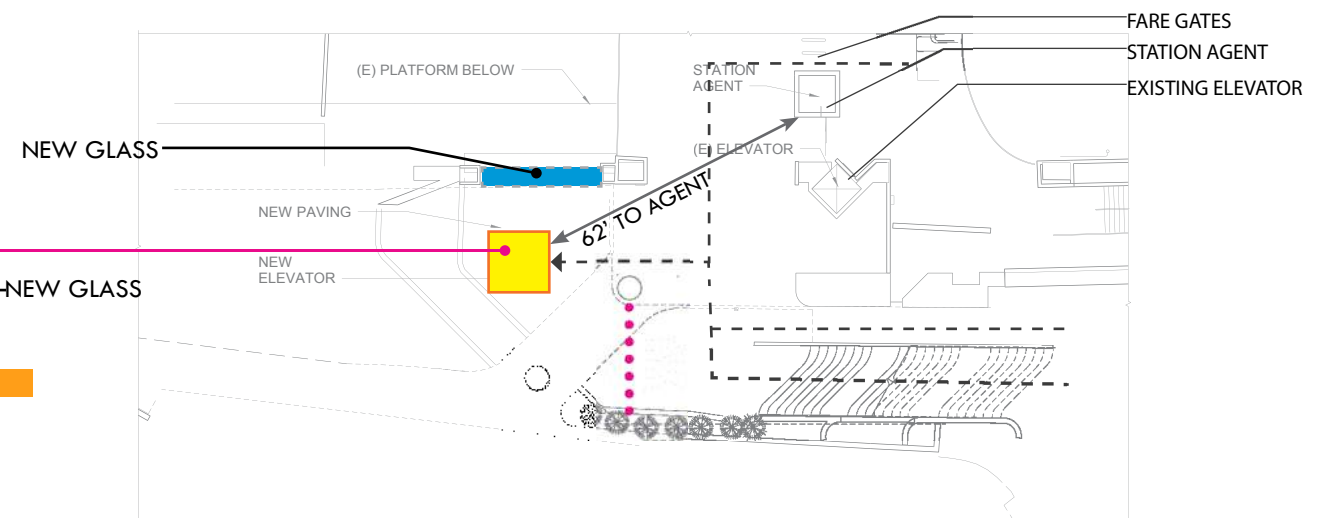
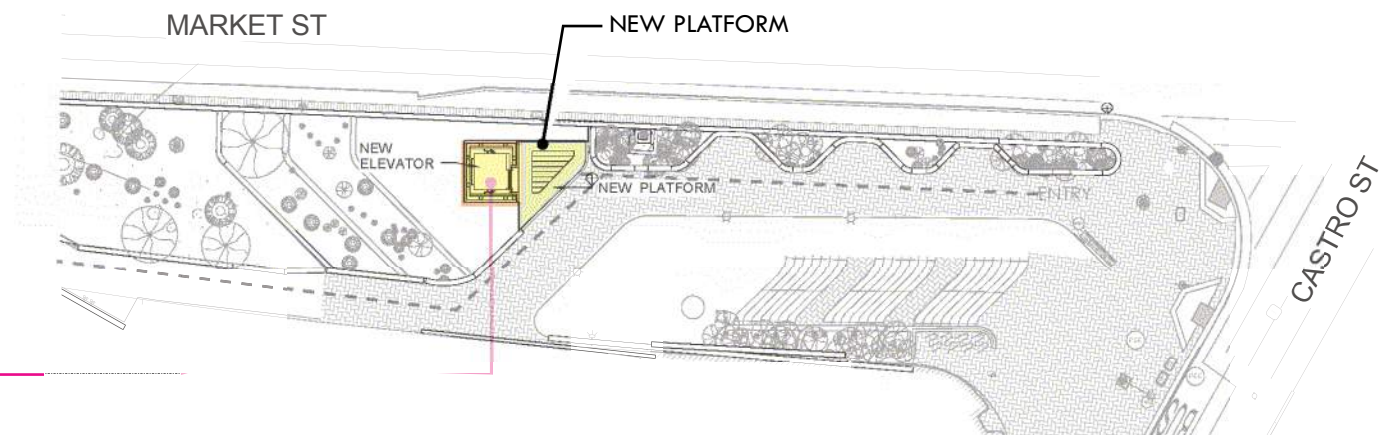
APPROVED CDR PHASE 3 MARCH 2020



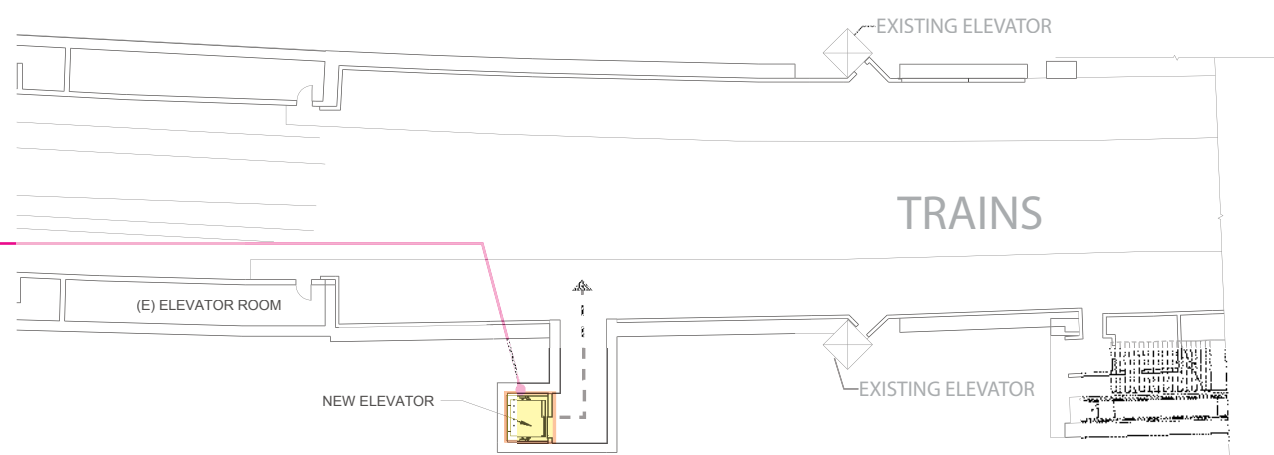
CONCOURSE LEVEL



PLATFORM LEVEL



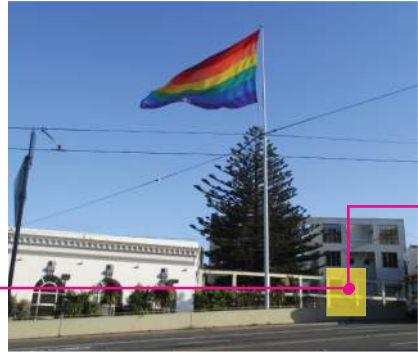
Concourse level plan - Not to scale



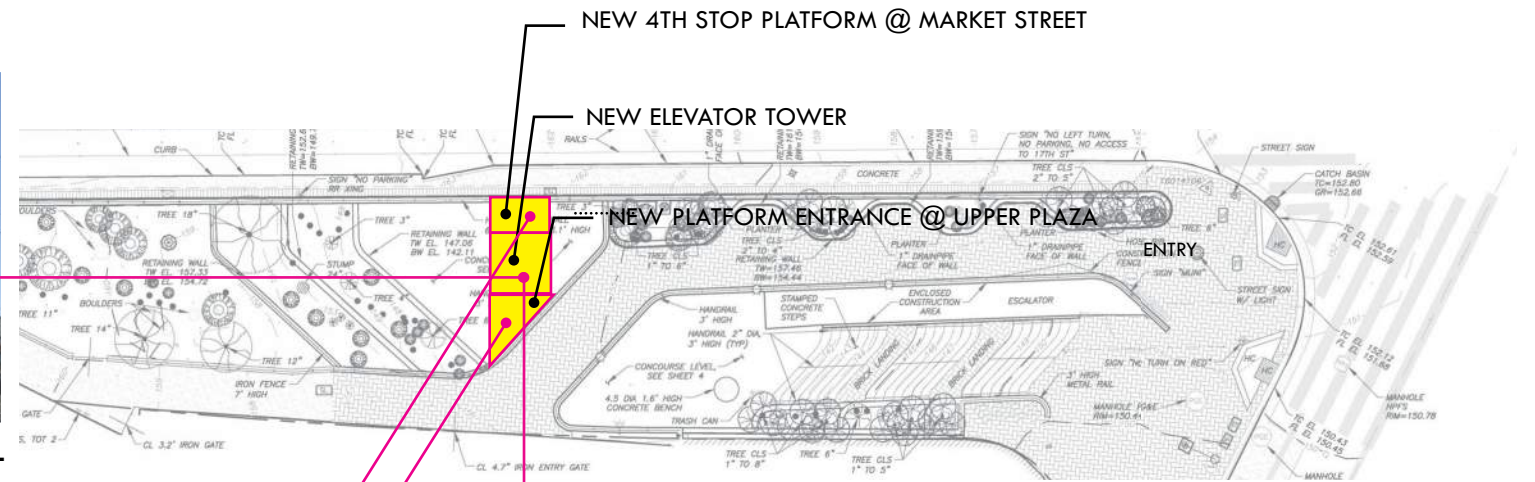
Platform level plan - Not to scale

PROJECT OVERVIEW

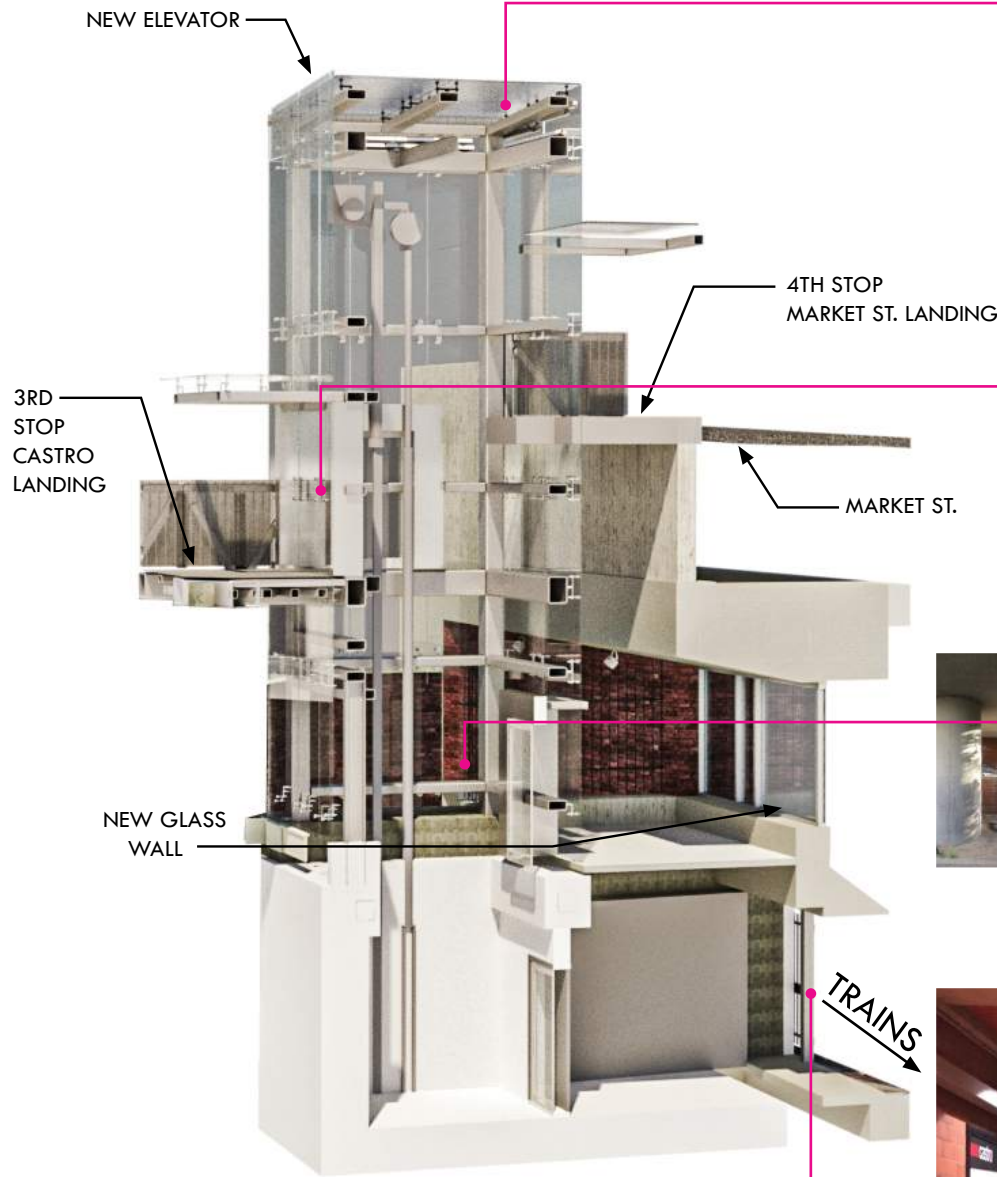
PROJECT REVISION:
ADD A 4TH STOP @ MARKET STREET



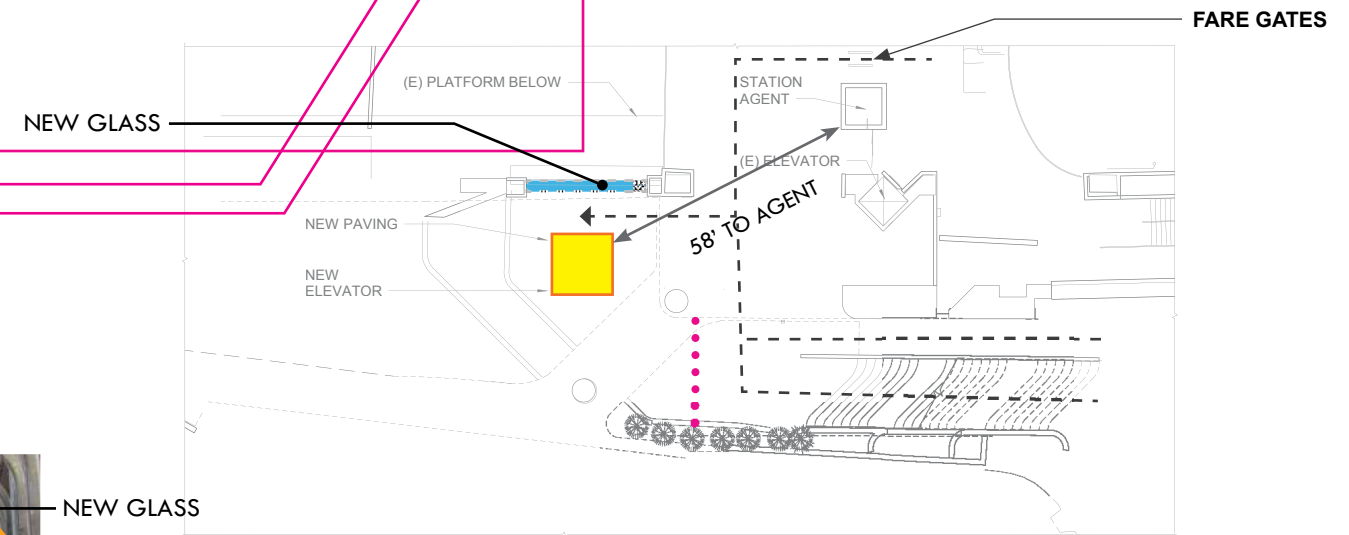
MARKET STREET LEVEL



Street level plan - Not to scale



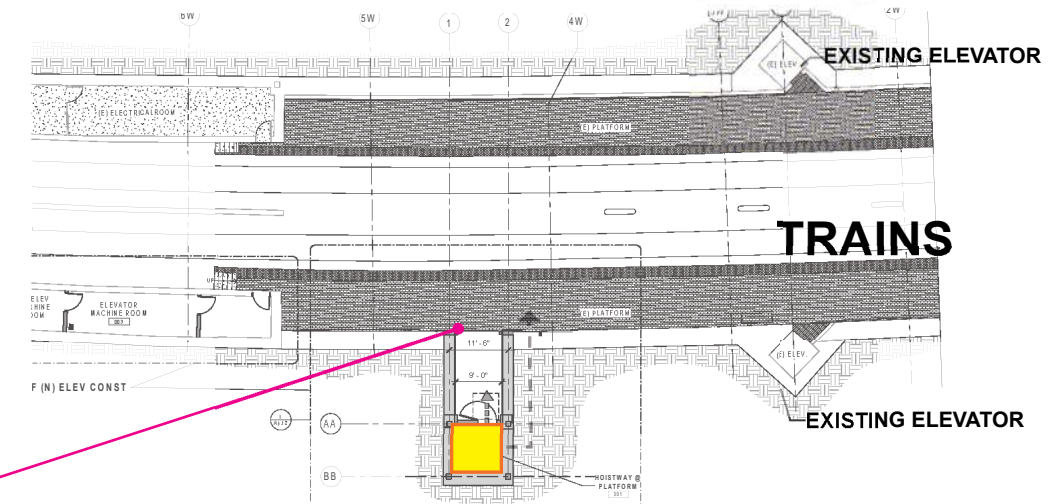
UPPER PLAZA LEVEL



Concourse level plan - Not to scale



CONCOURSE LEVEL



Platform level plan - Not to scale



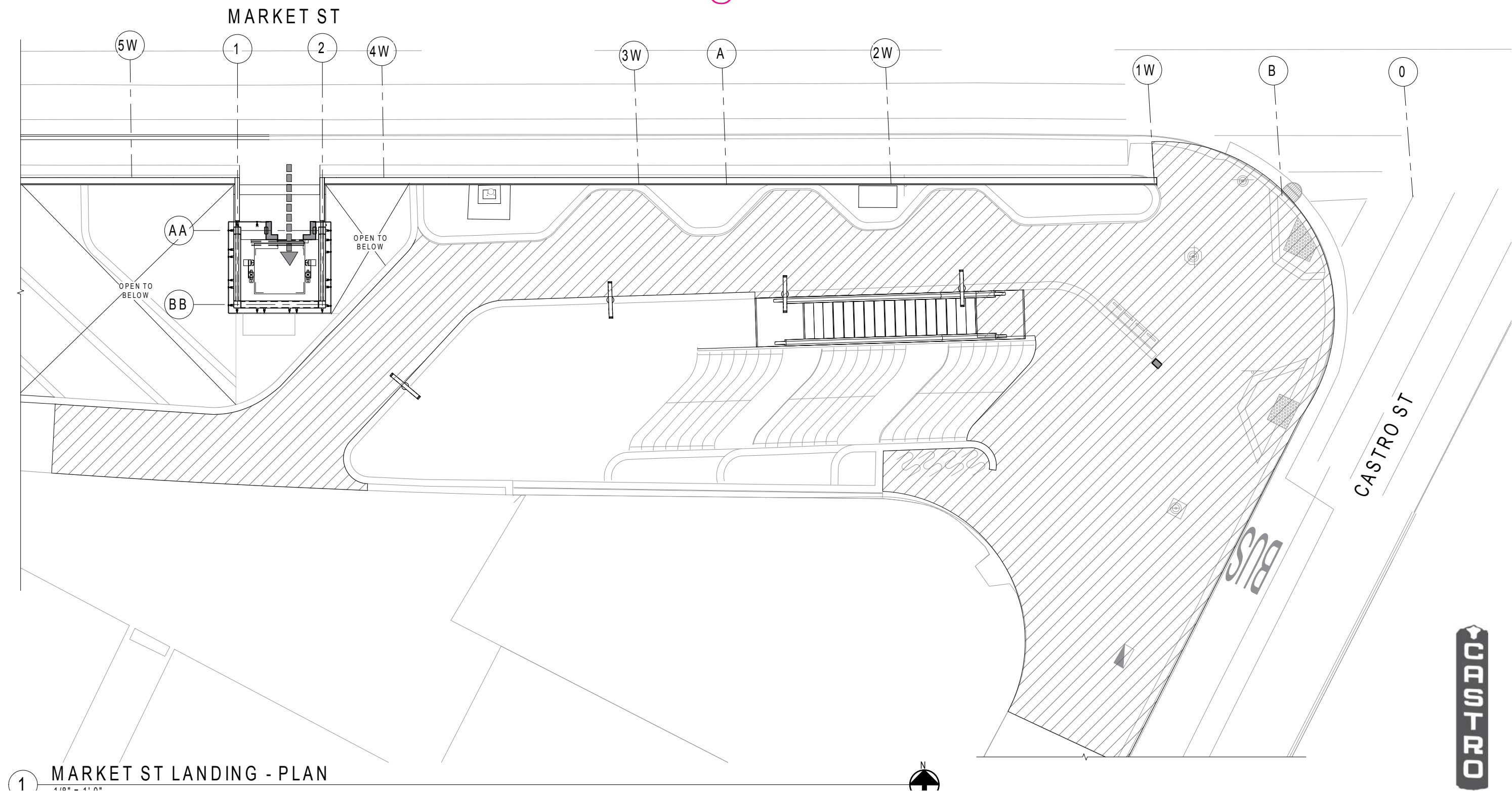
PLATFORM LEVEL

SCOPE OF WORK



MARKET STREET PLAN

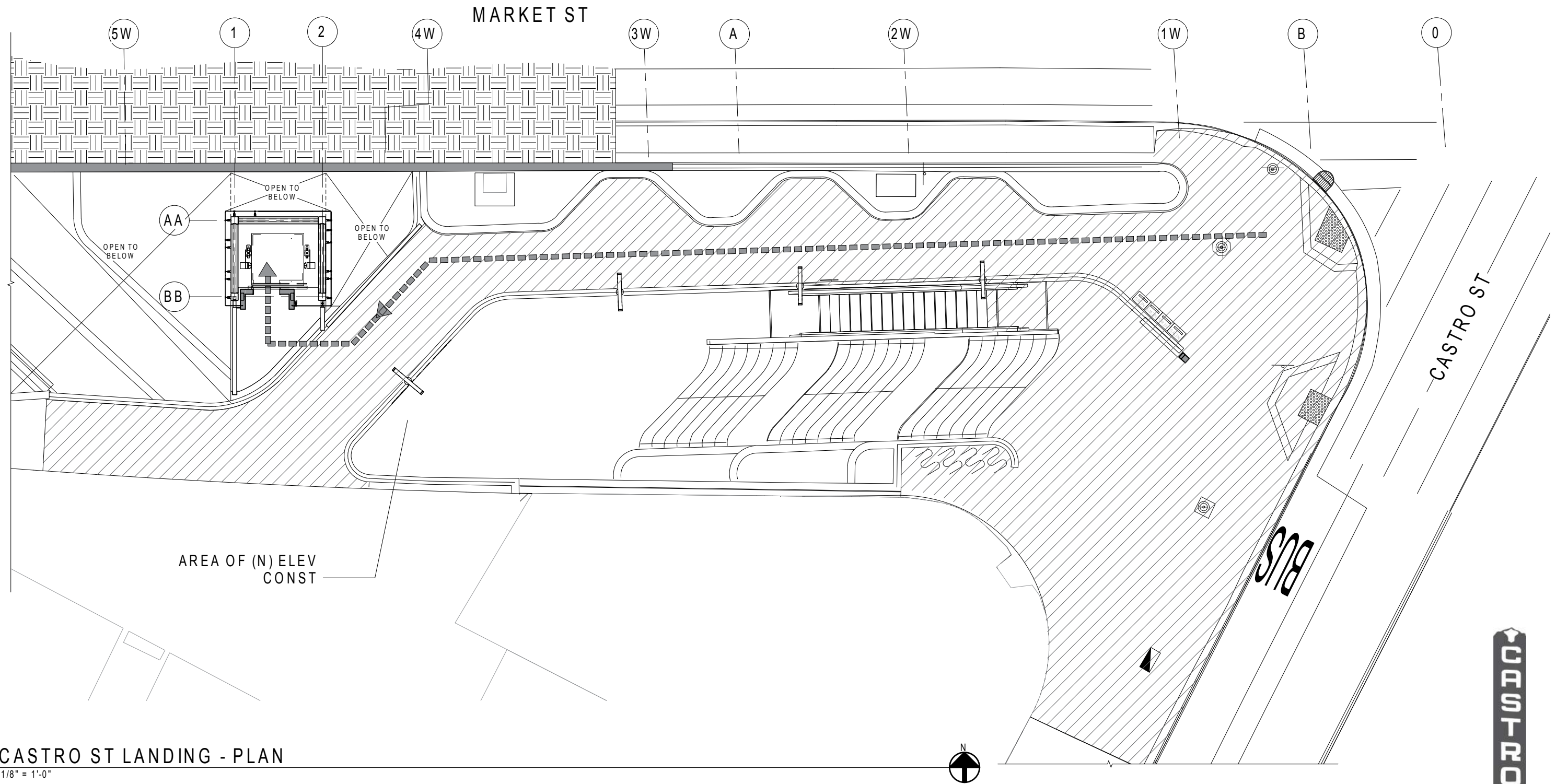
REVISIONS MADE BASED ON THE ADDITION OF A 4TH STOP AT MARKET STREET LEVEL
ELEVATOR WITH ENTRY POINTS ON NORTH-SOUTH AXIS. PATH OF TRAVEL @ MARKET ST LANDING



1 MARKET ST LANDING - PLAN
4'-0" = 1" 0"

CASTRO STREET PLAN

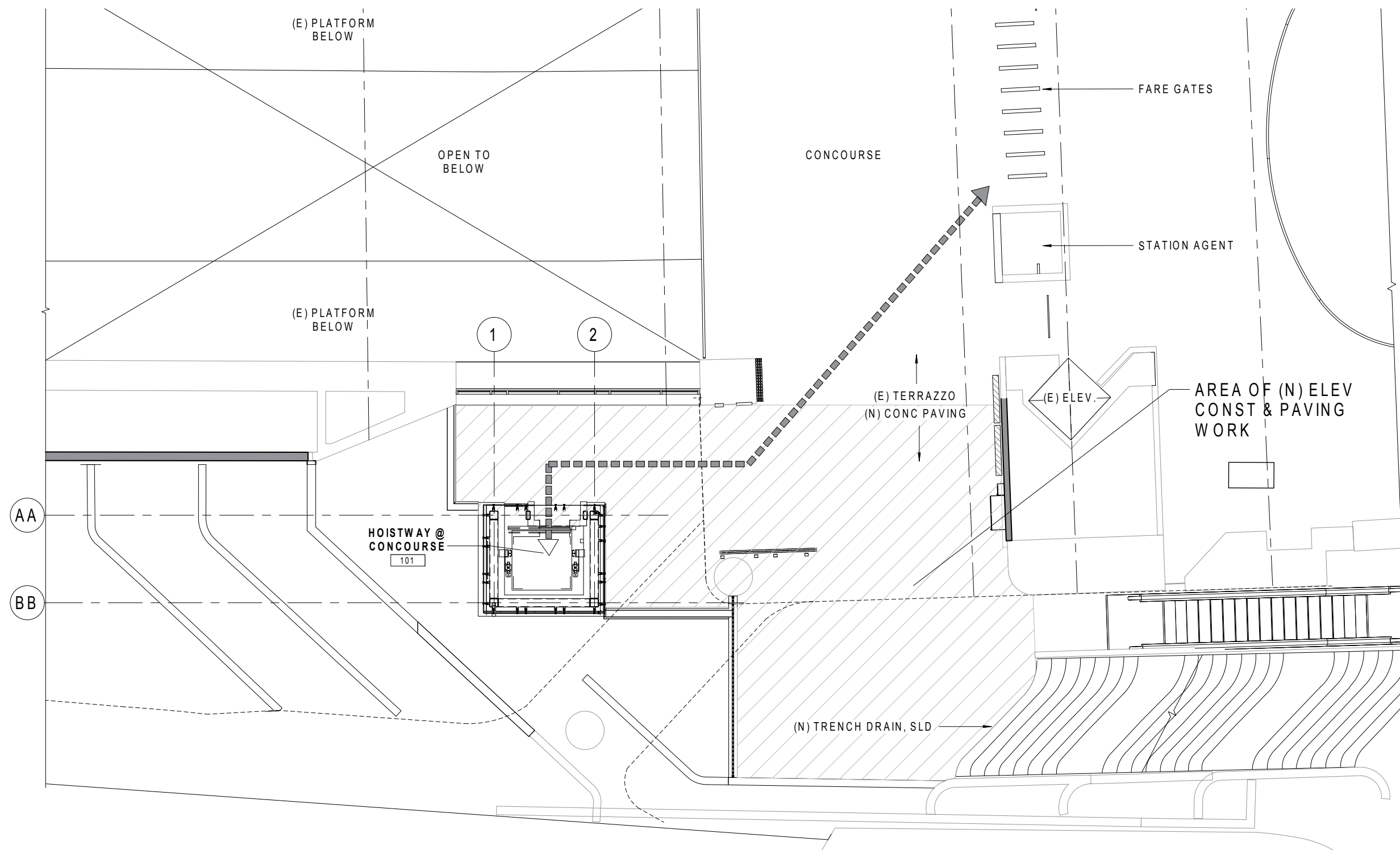
REVISIONS MADE BASED ON THE ADDITION OF A 4TH STOP AT MARKET STREET LEVEL
ELEVATOR WITH ENTRY POINTS ON NORTH-SOUTH AXIS. PATH OF TRAVEL @ PLAZA & CASTRO ST LANDING



1 CASTRO ST LANDING - PLAN
1/8" = 1'-0"

CONCOURSE PLAN

REVISIONS MADE BASED ON THE ADDITION OF A 4TH STOP AT MARKET STREET LEVEL



1 CONCOURSE LANDING PLAN
1/8" = 1'-0"

CASTRO STREET ENTRY

PROJECT REVISION - NEW CASTRO STREET LANDING



UPPER PLAZA FROM EAST (COLLINGWOOD STREET)

APPROVED CDR PHASE 3 MARCH 2020



PROJECT REVISION - NEW CASTRO STREET LANDING



ELEVATOR ENTRANCE FROM UPPER PLAZA



with existing tube railing

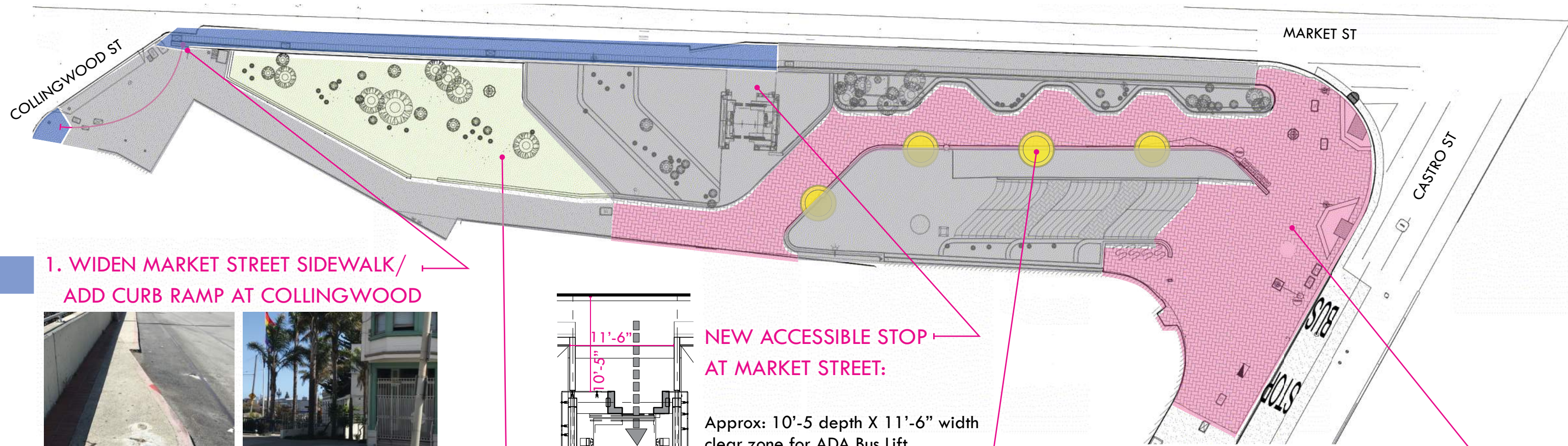
PROJECT REVISION - NEW CASTRO STREET LANDING



with new guardrail

PROJECT REVISION - NEW MARKET ST LANDING

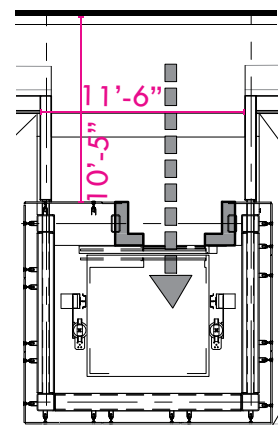




**1. WIDEN MARKET STREET SIDEWALK/
ADD CURB RAMP AT COLLINGWOOD**



Widen Market Street Sidewalk to match adjacent width and accommodate MUNI ADA lift deployment at elevator. Add new curb ramp at Market and Collingwood.



**NEW ACCESSIBLE STOP
AT MARKET STREET:**

Approx: 10'-5 depth X 11'-6" width
clear zone for ADA Bus Lift
(8' X 8' required by SFMTA)

2. REPLANT STREET LEVEL PLANTING AREA



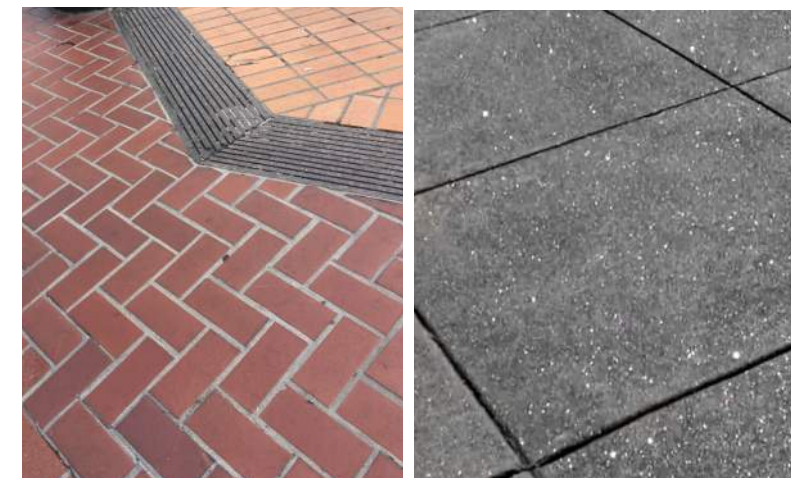
Plant with drought tolerant and low maintenance species. Swaying plants soften the station's structure, while strategically placed agaves provide bold focal points and improve security.

3. REPLACE PLAZA LIGHT FIXTURES



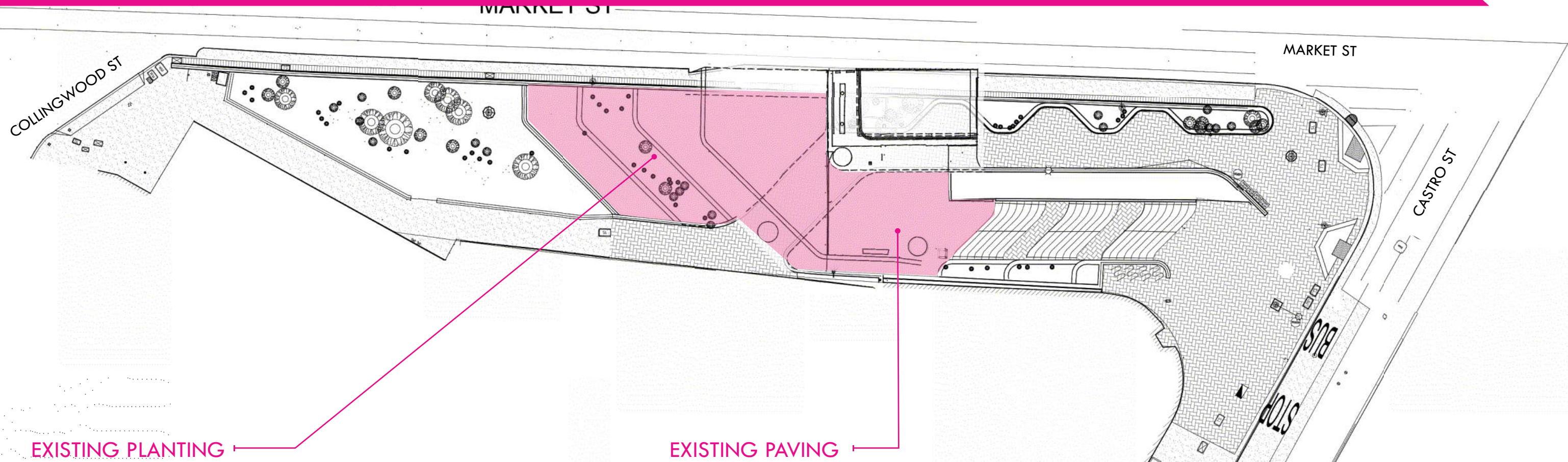
Replace existing pole top light fixtures with "Torres" fixtures by Landscape Forms.

4. REGRADE AND REPLACE PLAZA PAVING



Replace existing brick with sparkle grain integral color concrete to match Castro Streetscape paving

SITE DESIGN | EXISTING CONCOURSE LEVEL CONDITIONS



EXISTING PLANTING

EXISTING PAVING



2. REPLANT TERRACES AND CONCOURSE

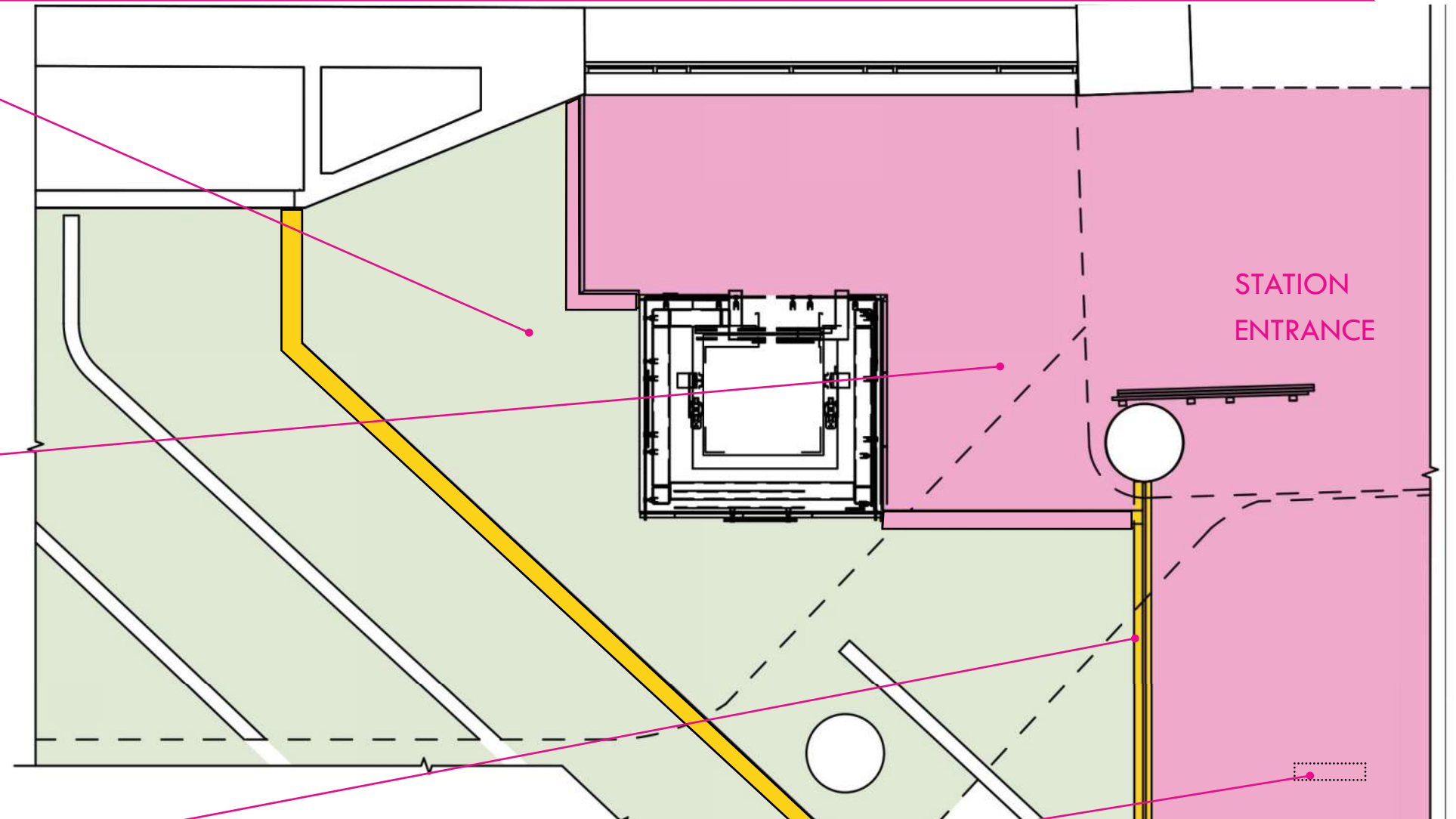


Plant with drought tolerant and low maintenance species that tolerate a range of sun and shade. Swaying plants soften the station's structure, while strategically placed agaves provide bold focal points and improve security.

3. PROVIDE NEW PAVING



Replace existing paving at station entrance to correct drainage issues. Provide new paving at elevator "garden room." Paving to be a non-slip terrazzo style aggregate concrete paving in a warm tone to coordinate with interior station floor material



4. REPLACE FENCING AND INTERPRETIVE SIGNAGE



Porcelain example: Unity Plaza Stairs

Replace and realign existing fencing to improve station security. Coordinate new fence detailing and material with existing station gate for a unified appearance.

Re-fabricate existing interpretive signage in durable photo-enamel porcelain. Mount at same height and location on new fence with custom metal frame for a more integrated appearance.

5. REPLACE BENCH



Replace existing damaged commemorative bench with a new metal bench.

SOFT & SWAYING



SCULPTURAL SUCCULENTS



ACCENTS: FORM & COLOR



PROPOSED PLANT LIST

SOFT & SWAYING

- a. Pine Muhly Grass / *Muhlenbergia dubia*
- b. Crinkled Hairgrass / *Deschampsia flexuosa*
- c. Lomandra 'Platinum Beauty' / *Lomandra longifolia* 'Platinum Beauty'
- d. Liriope / *Liriope muscari*

SCULPTURAL SUCCULENTS

- e. *Agave gentryi*
- f. *Agave* 'Blue Glow'
- g. *Agave ovatifolia*
- h. *Agave stricta*

ACCENTS: VERTICAL FORM & COLOR

- i. Blue Mediterranean Fan Palm / *Chamaerops humilis* 'Cerifera'
- j. *Aechmea blanchetiana* 'Orangeade'
- k. Bush Lily / *Clivia miniata*