

Civic Design Review Phase 2

Chinatown Plaza

April 20, 2015



Chinatown Plaza Comment responses

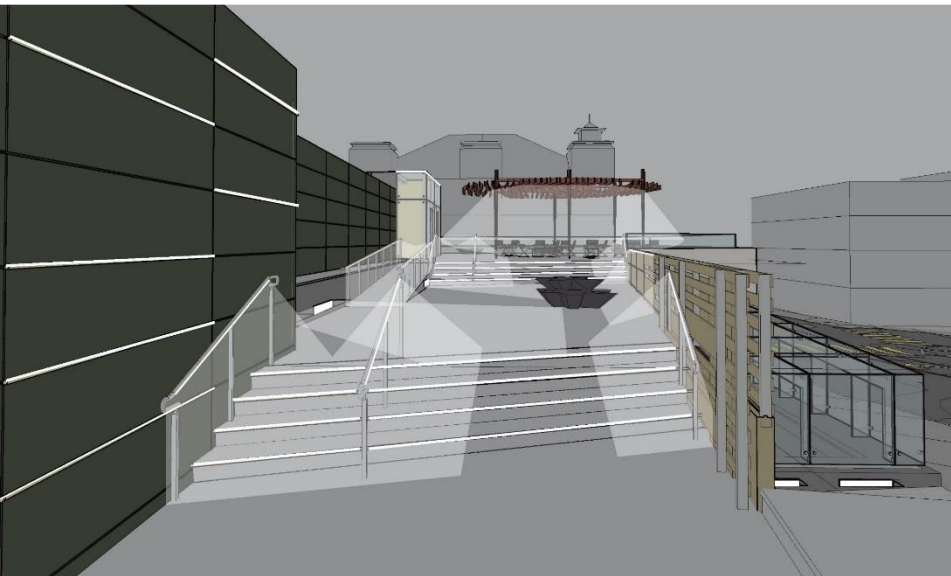
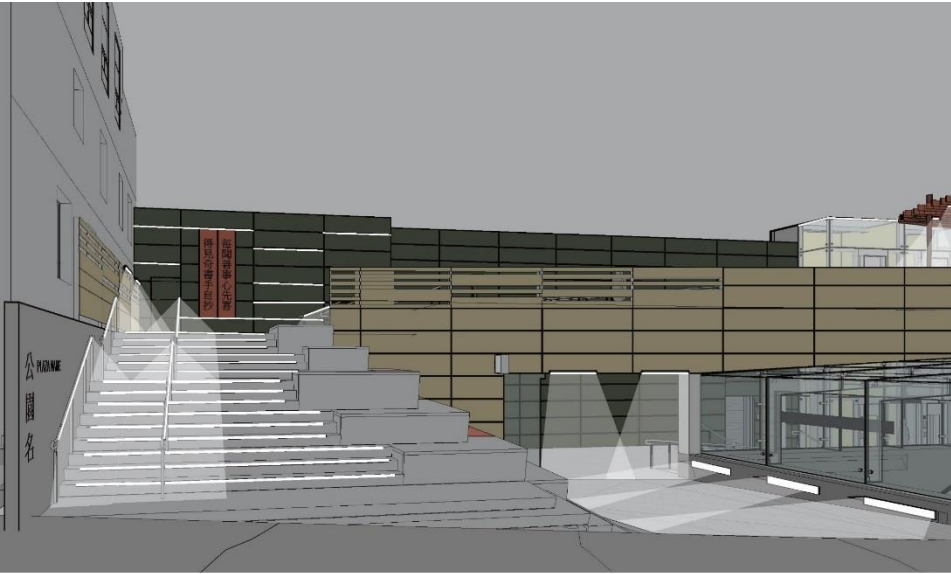
Phase 2 of Chinatown Plaza was presented on March 16, 2015, with the following comments received *(response in italics below each)*

1. Remove concessions signage from exterior façade
Signage moved to interior, mounted on soffit directly above service counters; please see p.3
2. Stair lighting to be uniform and even for safety
Riser lighting will be on every step to ensure uniform lighting, please see p.6
3. Investigate more contemporary lighting design overall
Lighting design in ceiling matches previously approved station design, currently under construction. Please see p. 4 for lighting specific to Chinatown Plaza.
4. Explore alternative south wall designs
Multiple design options were studied; we worked with the Presbyterian Church to finalize – please see p.5
5. Shift couplets artwork north, away from blind door
Couplets were shifted north. Detail shown of how panels will be mounted and lighted. Please see p. 6-7
6. Ensure blind door is appropriately detailed
Please see concealed door detailing on p.8
7. Use integrally colored material rather than stained for mid plaza parapet/fence
We are currently working with SFAC and artist to select material from available integrally colored FibreC GFRC panels, please see p.7
8. Use a matte or semigloss finish on the trellis
We propose gloss finish for maintenance and cost reasons. Matte finish is not available for exterior color applications.
9. Test movable furniture for accessibility for seniors and those who use canes and walkers
Furniture was tested and commented on by elderly community members.
10. Resolve number and location of star-shaped benches to facilitate conversational groups
Three additional star benches were added to the plan. Please see plans on p.4 and images of p.6
11. Show renderings of gate in open and closed positions
Please see p. 7 for gate in open and closed positions.

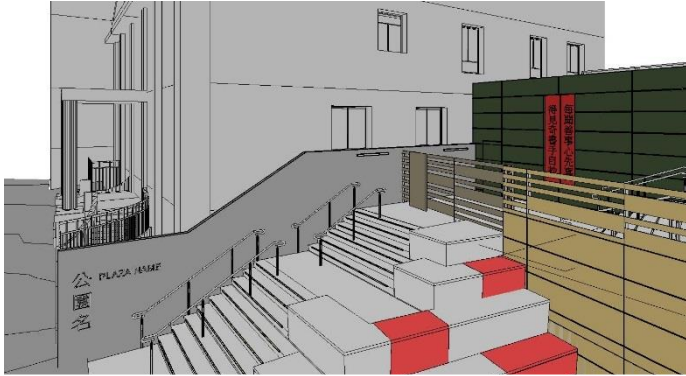
Chinatown Plaza secondary entrance/concessions signage



Chinatown Plaza lighting concepts



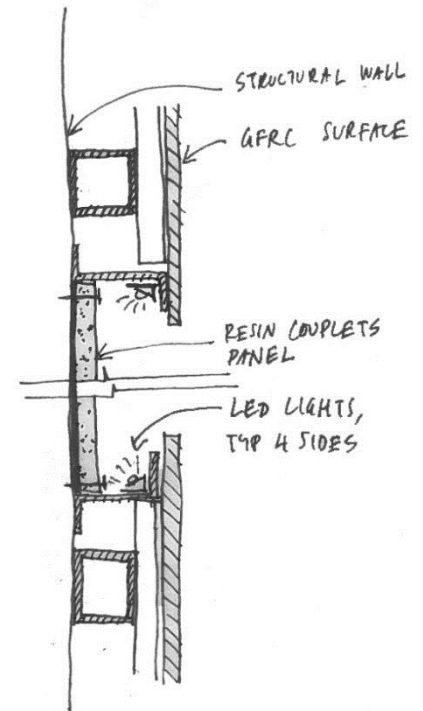
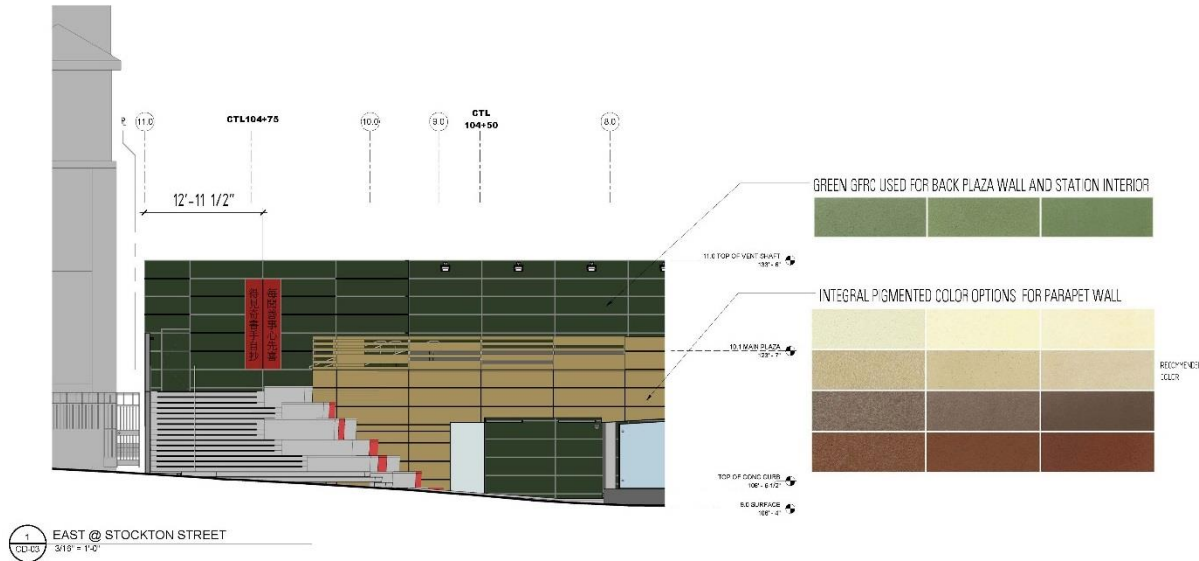
Chinatown Plaza south wall



Chinatown Plaza Stockton towards NW



Chinatown Plaza fence material, couplets

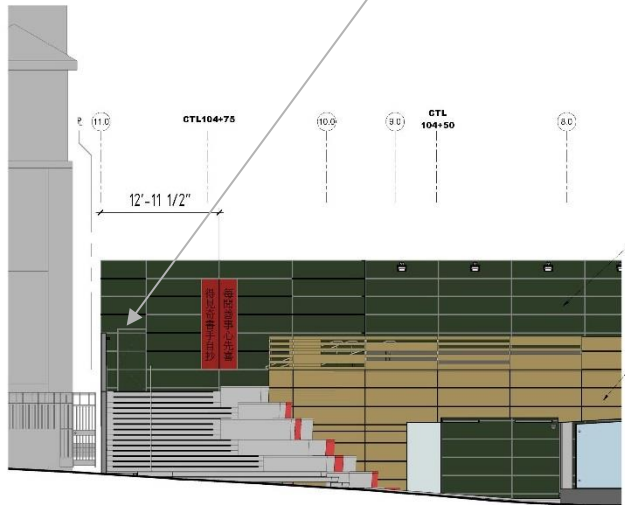


Plan detail: Recessed couplets

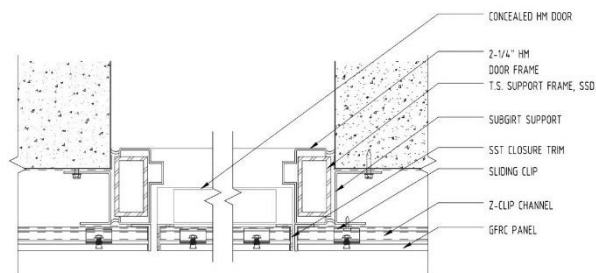


Chinatown Plaza concealed door details

concealed door

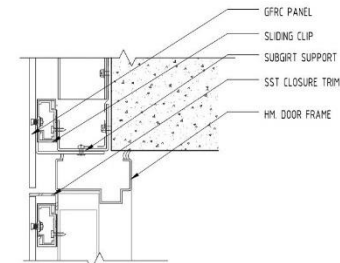


1 EAST @ STOCKTON STREET
3/18" = 1'-0"



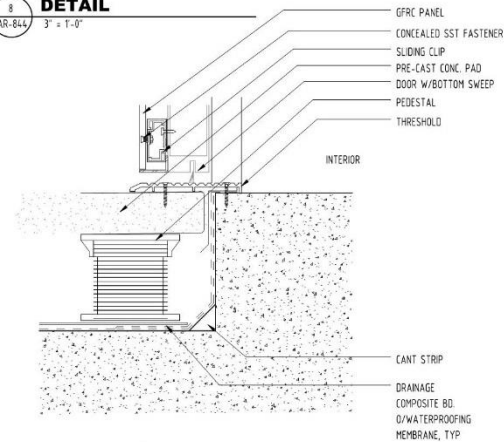
CONCEALED DOOR JAMB

9
AR-844
3" = 1'-0"



CONCEALED DOOR HEAD

8
AR-844
3" = 1'-0"



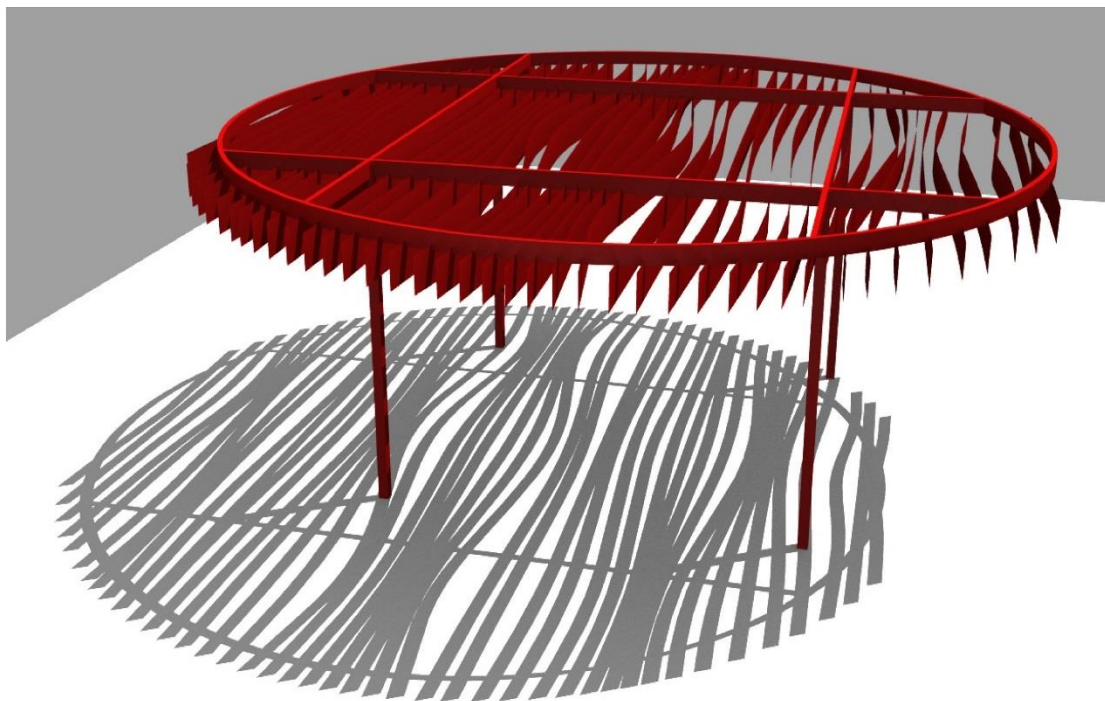
CONCEALED DOOR THRESHOLD

7
AR-844
3" = 1'-0"

Chinatown Plaza plaza trellis

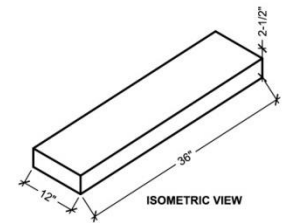
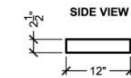
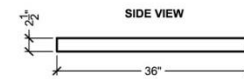
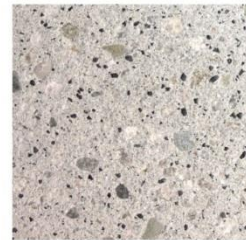
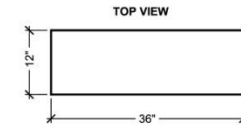
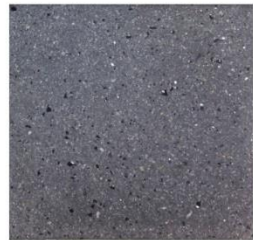


DESIGN INTENT_PRECEDENT PHOTO

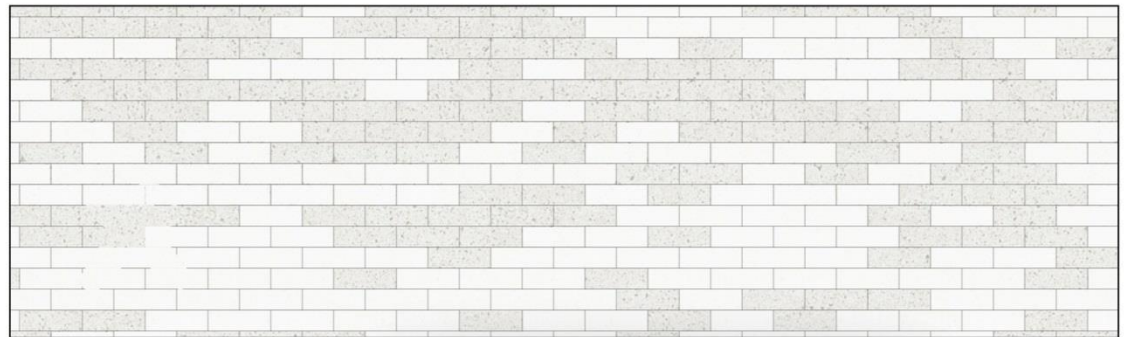


DESIGN INTENT AND COLOR_STUDY MODEL ONLY

Chinatown Plaza landscape elements



PAVERS



PAVING PATTERN



PHYLLOSTACHYS AUREA 'KOI' WITH BLACK RIVERSTONE

Chinatown Plaza landscape elements



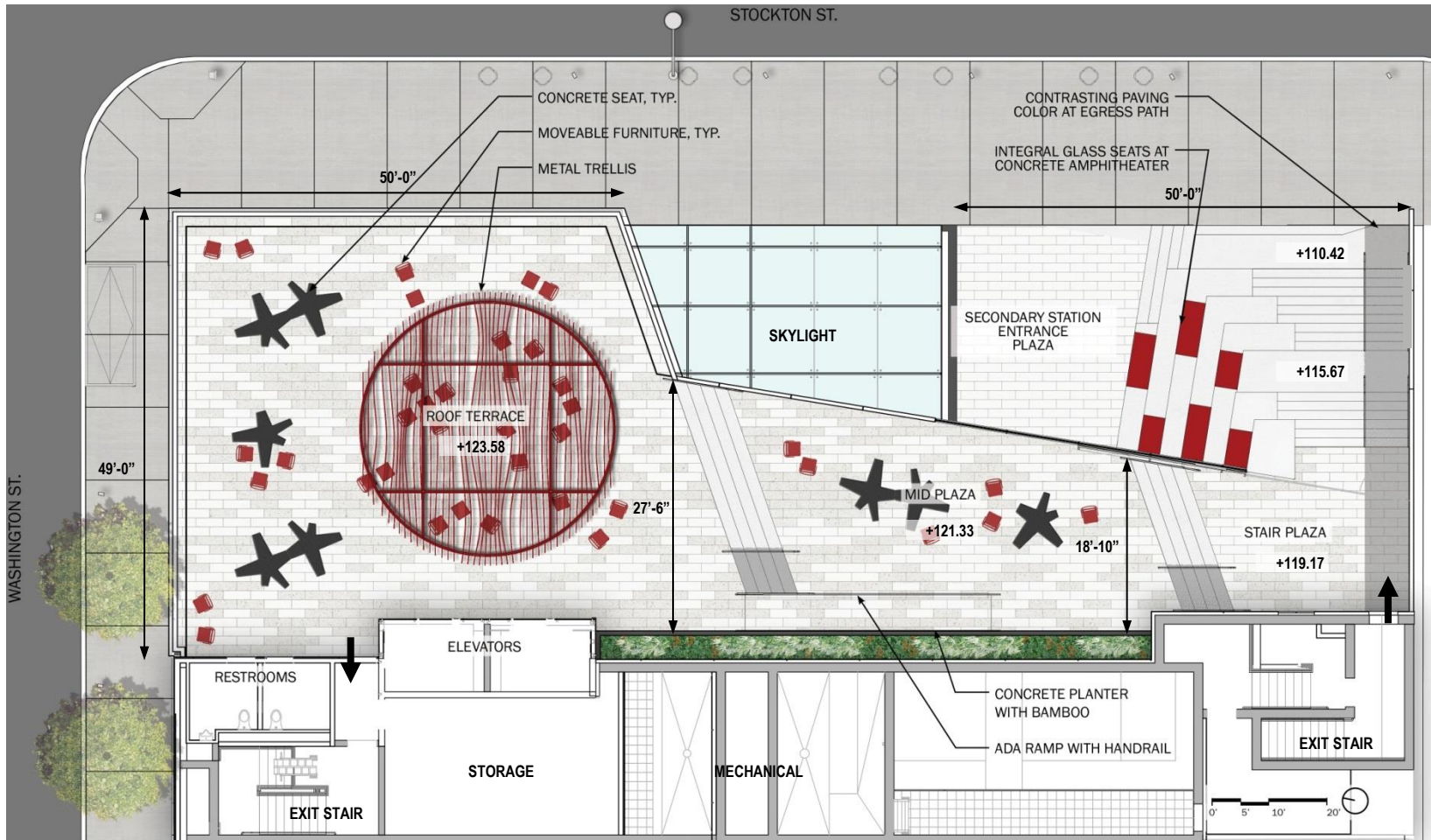
CONCRETE STAR BENCH



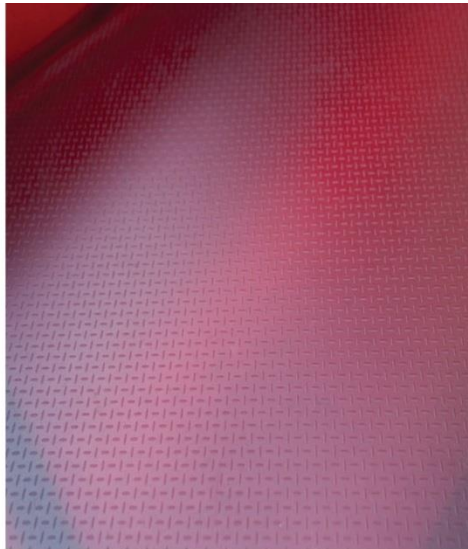
METAL CHAIR WITH ARMS & OTTOMAN



Chinatown Plaza upper level plan



Chinatown Plaza landscape elements



INTERNALLY LIT GLASS SEAT

