



**SAN FRANCISCO**  
**ARTS COMMISSION**  

---

**CENTRAL SUBWAY**  
**PUBLIC ART PROGRAM**

**Final Artist Selection Panel Recommendation**  
**CLARE ROJAS**  
**CHINATOWN STATION CROSSCUT CAVERN WALL**

## Chinatown Station location + context



## Chinatown Station location + context

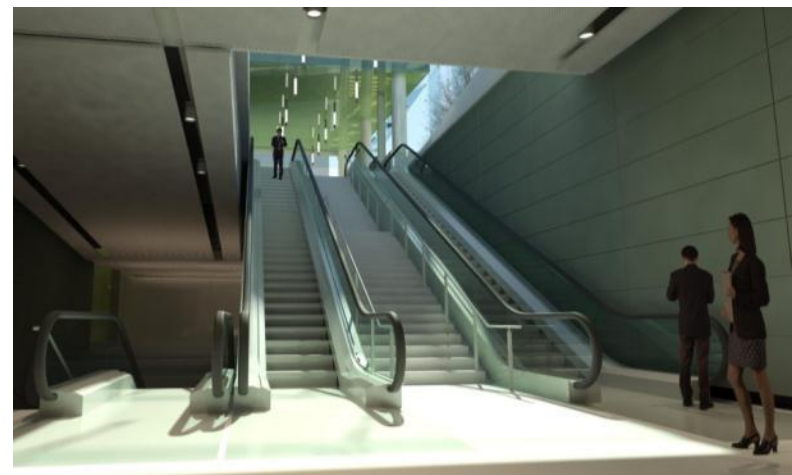


## Chinatown Station

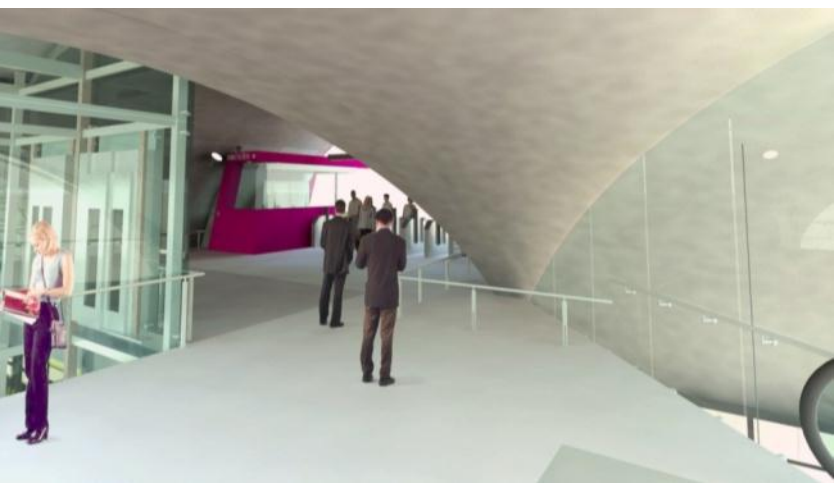
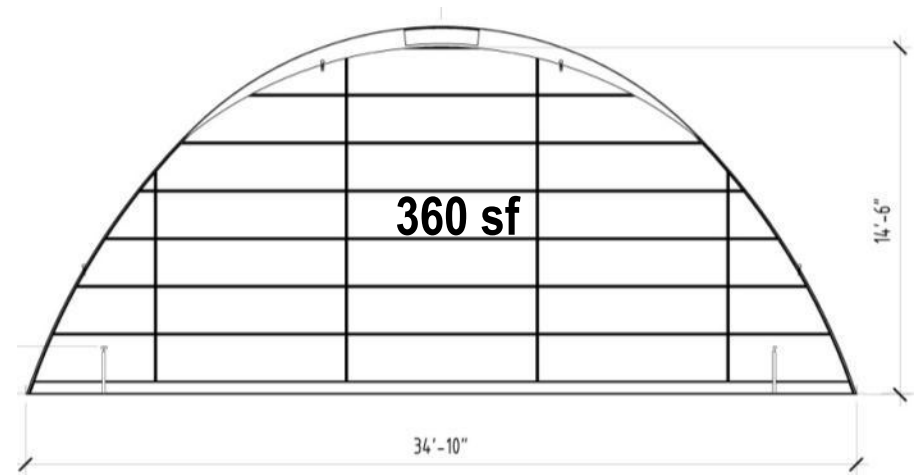
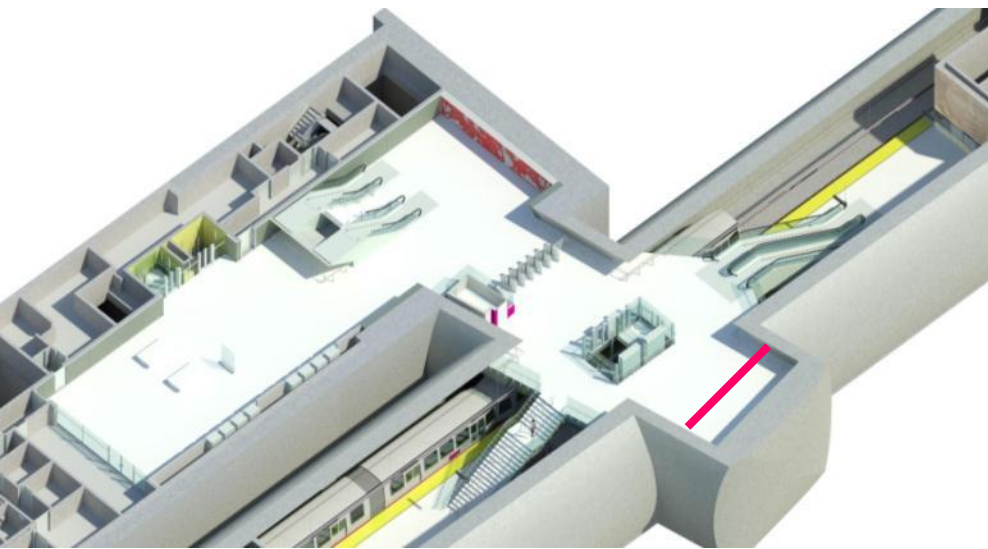




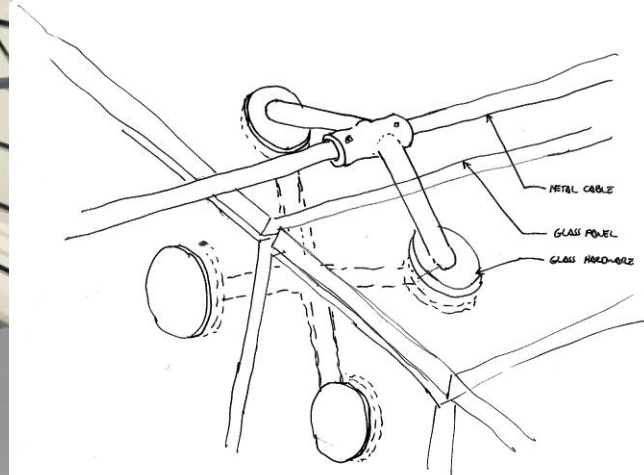
## Chinatown Station mezzanine landing + concourse ticketing hall



## Chinatown Station concourse level paid area



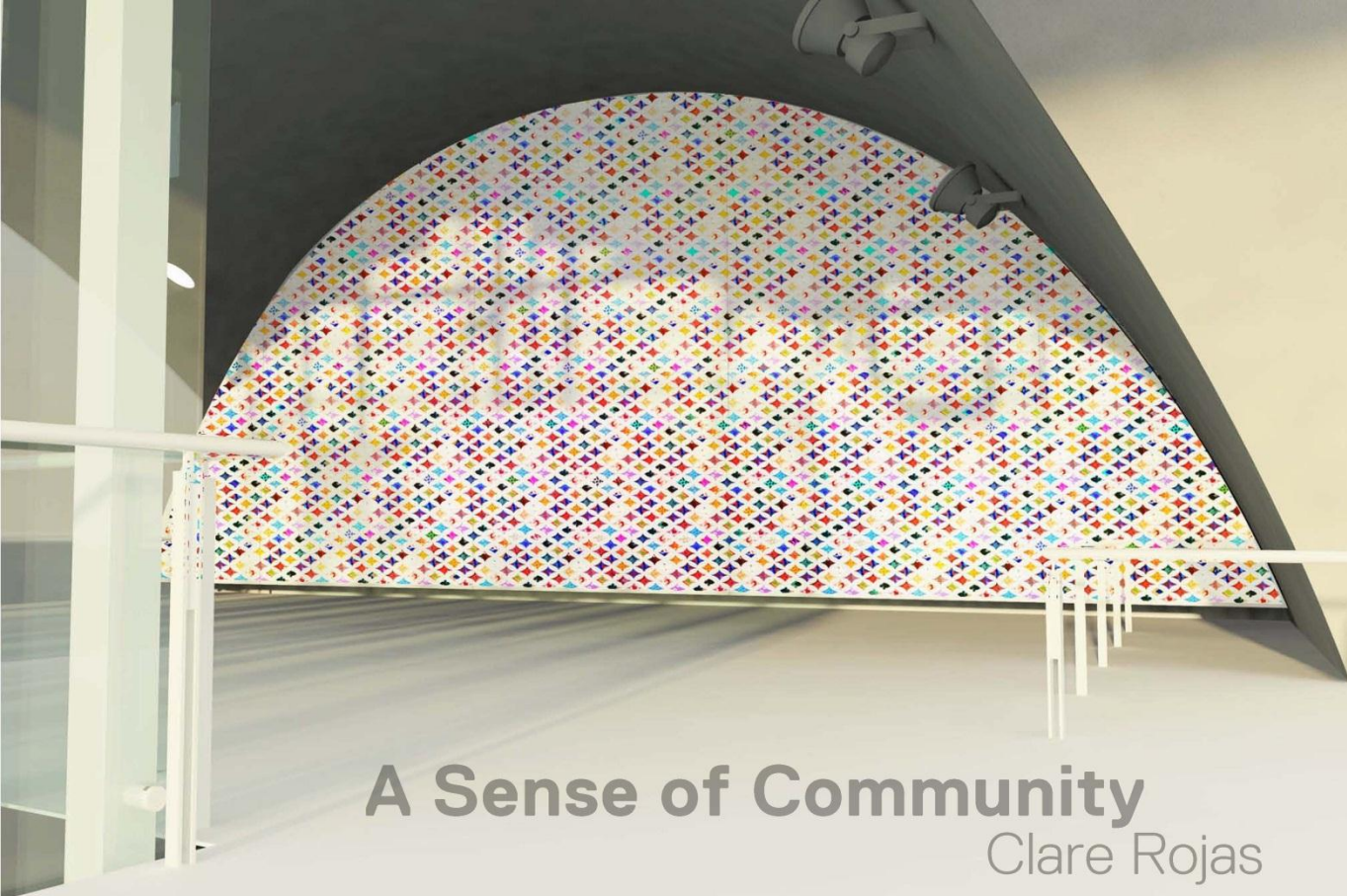
## Chinatown Station platform cavern





## Chinatown Station platform cavern





# A Sense of Community

Clare Rojas

Artist Clare Rojas proposes gathering samples of Chinese textiles to create a traditional quilt pattern that is inspired from stained glass windows. The design we know as Cathedral quilting has been in Asia for centuries, but was first recorded in the United States at the Chicago World's Fair of 1933. The completed designs will be digitally reproduced and transferred to a permanent material such as glass or ceramic tile panels for installation on the crosscut cavern wall. Each individual and distinct colorful fabric swatch will appear to be framed within a small circle closely connected to other circles resulting in an overall collection of images representing the Chinatown community held together by a common history and culture.



A traditional cathedral quilt pattern



**We They, We They**  
Installation by Clare Rojas at the San Francisco Museum of Craft and Folk Art



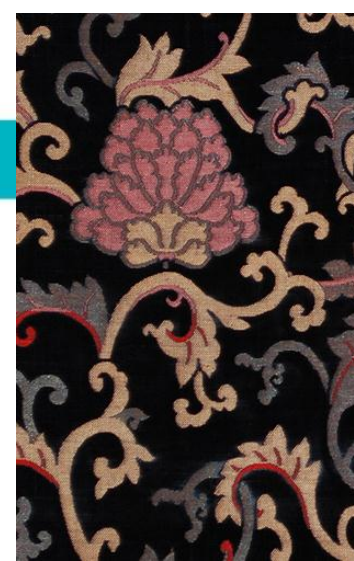
**Chinatown Culture and Textiles**  
Sample patchwork patterns and imagery

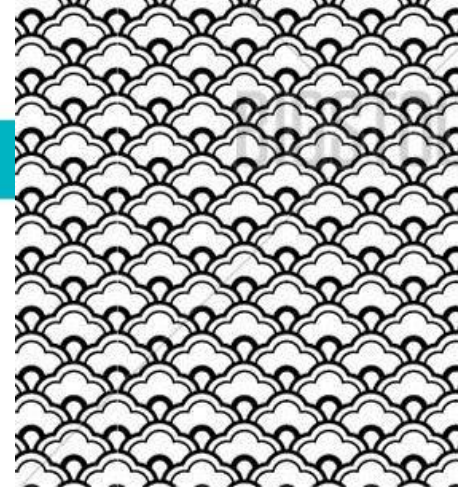




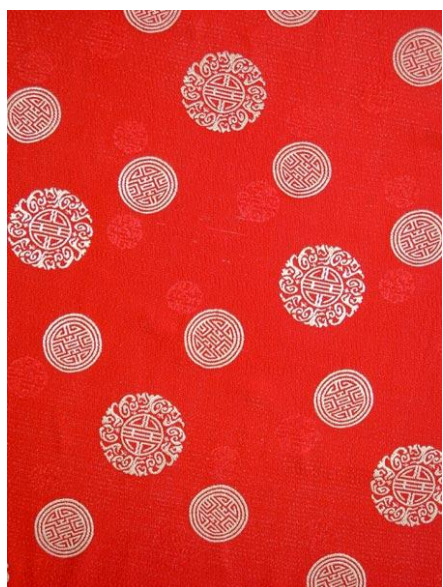








www.bigstock.com · 256





**CENTRAL SUBWAY  
CROSSCUT CAVERN WALL ARTWORK AT CHINATOWN STATION**

**PANELSUMMARY: ARTIST SELECTION PANEL – MEETING 2**

**MEETING DATE AND TIME**

Wednesday April 3, 2013, 9:00 a.m. – 1:00 p.m.

**PANELISTS**

Lucinda Barnes, Chief Curator and Director of Programs and Collections, Berkeley Art Museum, Arts Professional  
Abby Chen, Curator and Deputy Director, Chinese Culture Center, Arts Professional  
Gregory Chew, Arts Commissioner  
John Funghi, Central Subway Program Director  
Cathie Lam, Chinatown Community Development Center, Community Representative  
Mona Tamari, Project Architect  
Karen Tsujimoto, Curator, Contemporary Jewish Museum, Arts Professional  
Luis Zurinaga, Transportation Authority Representative

**PROCESS**

Artwork proposals were presented by:

Hughen/Starkweather

Hung Liu

Clare Rojas

Jovi Schnell

Presentations were followed by discussion and voting.

**VOTING CRITERIA**

The panelists used the following criteria and point system to evaluate each of the artwork proposals:

- Aesthetic quality of art or design (up to 10 points)
- Appropriateness for site, including safety and scale (up to 10 points)
- Positive impact on mass-transit customers (up to 5 points)

**RESULTS OF VOTING TALLY**

Clare Rojas	159
Hung Liu	142
Jovi Schnell	108
Hughen/Starkweather	105

The panel selected Clare Rojas' proposal with the highest number of points for recommendation to the Arts Commission with Hung Liu's proposal as the alternate.

**ARTS COMMISSION APPROVAL**

The following two motions will be on the April 17, 2013 Visual Arts Committee agenda for approval:

**Motion:** Motion to approve the proposal by Clare Rojas for a permanent artwork for the Central Subway Chinatown Station Crosscut Cavern Wall as recommended by the Central Subway: Chinatown Station Crosscut Cavern Wall Public Art Selection Panel.

**Motion:** Motion to authorize the Director of Cultural Affairs to enter into an agreement with artist Clare Rojas for an amount not to exceed \$325,000, for design, fabrication, and transport of the artwork for permanent installation on the crosscut cavern wall of the Central Subway Chinatown Station.