



**SAN FRANCISCO GENERAL HOSPITAL (SFGH)  
EMERGENCY ROOM ENTRANCE WALL  
PANEL ONE SUMMARY**

**MEETING DATE AND TIME:**

Tuesday, July 16, 2013, 1 - 5 p.m.

**PANELISTS:**

\*Chris Barton, Chief of Emergency Medicine, SFGH  
Timothy Burgard, Curator-in-Charge of American Art, Fine Arts Museums of San Francisco  
\*Sue Carlisle, Associate Dean, University of California, San Francisco  
\*Tristan Cook, SFGH Rebuild Public Relations Director, SFGH  
\*Sue Currin, Chief Executive Officer, SFGH  
Paolo Diaz, Principal, Fong & Chan Architects  
Dorka Keehn, Arts Commissioner  
Constance Lewallen, Adjunct Curator, Berkeley Art Museum and Pacific Film Archive

(\*Panelists representing SFGH shared a total of two votes.)

**PROCESS:**

**ROUND ONE**

Panel reviewed the qualifications of 15 artists selected by Arts Commission staff from the 2013/14 Prequalified Artist Pool and the General Hospital Emergency Room Entrance Wall Public Art Project Request for Qualifications. Round one voting yielded 6 semifinalists.

**ROUND TWO**

Panel discussed the semifinalists' qualifications and used the following criteria and point system to evaluate each of their portfolios (1 = low score, 10 = high score):

- Artistic excellence, innovation and originality as evidenced by documentation of past work and other supporting material (1-10 points)
- The artist's work is judged to be appropriate to the goals of the project (1-10 points)

**VOTING RESULTS:**

Binh Danh	91
Jetro Martinez	84
Lisa Levine	75
Kerry Vander Meer	64

The Panel selected Binh Danh, Lisa Livine, and Jetro Martinez as the recommended finalists for the General Hospital Emergency Room Entrance Wall Public Art Project.

**ARTS COMMISSION APPROVAL:**

The following motion will be on the July 17, 2013 Visual Arts Committee agenda for approval:

**Motion:** Motion to approve Binh Danh, Lisa Livine, and Jetro Martinez as finalists with Kerry Vander Meer as an alternate for the San Francisco General Hospital, Emergency Room Entry Wall Public Art Project.



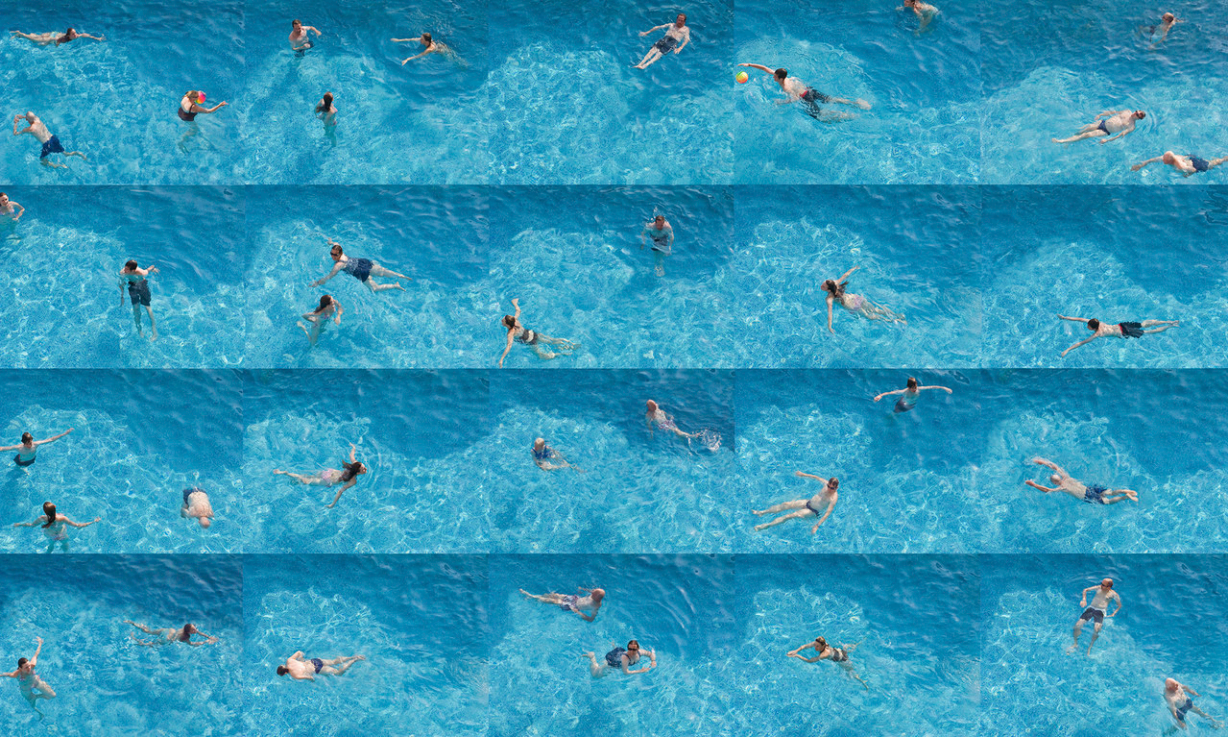






















BOOT  
CAMP



















