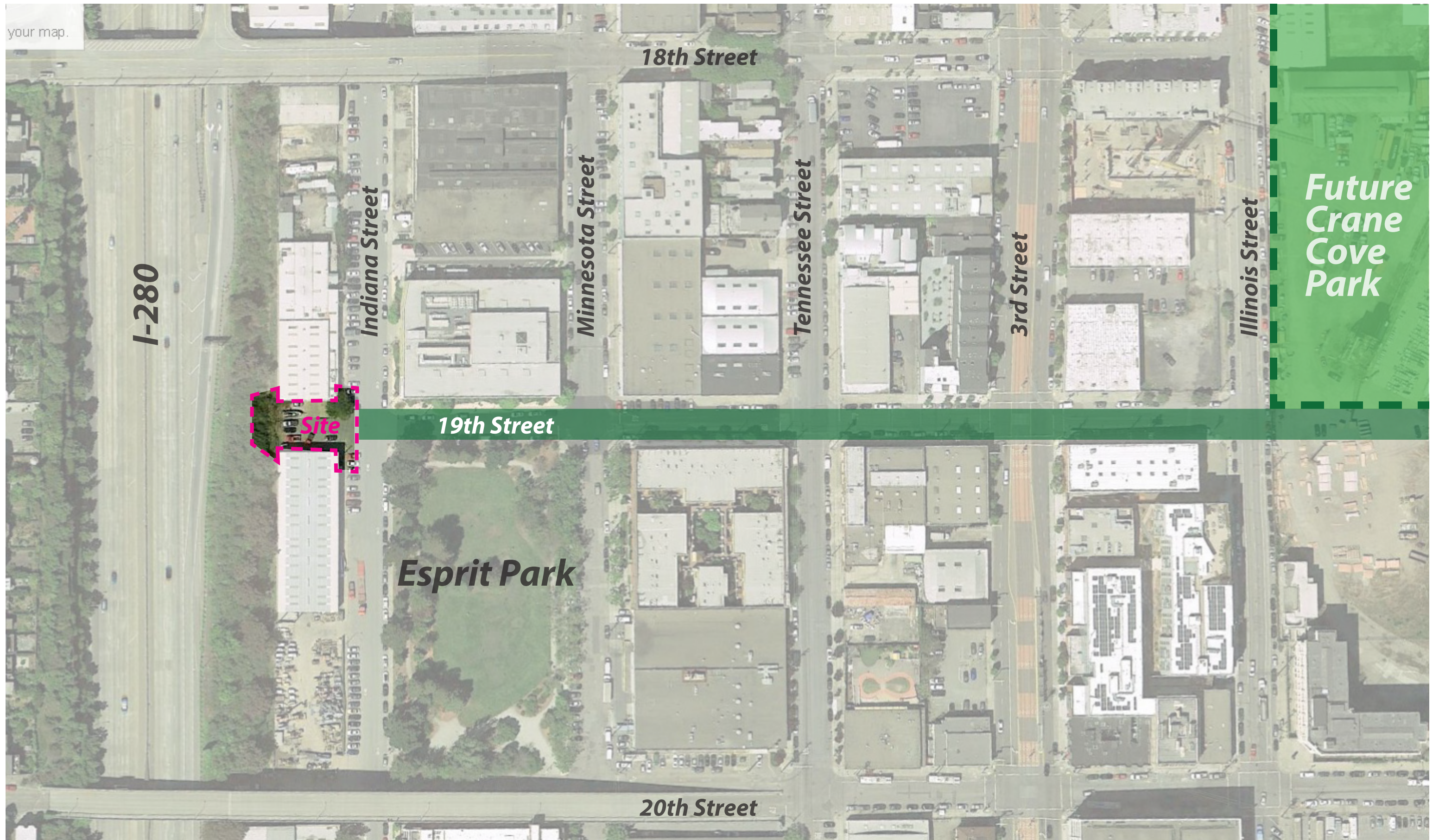


Dogpatch Arts Plaza

DESIGN DEVELOPMENT PHASE 2 - CIVIC DESIGN REVIEW 04.20.2015



Context- 19th Street Becomes “Shared Use Greenway”

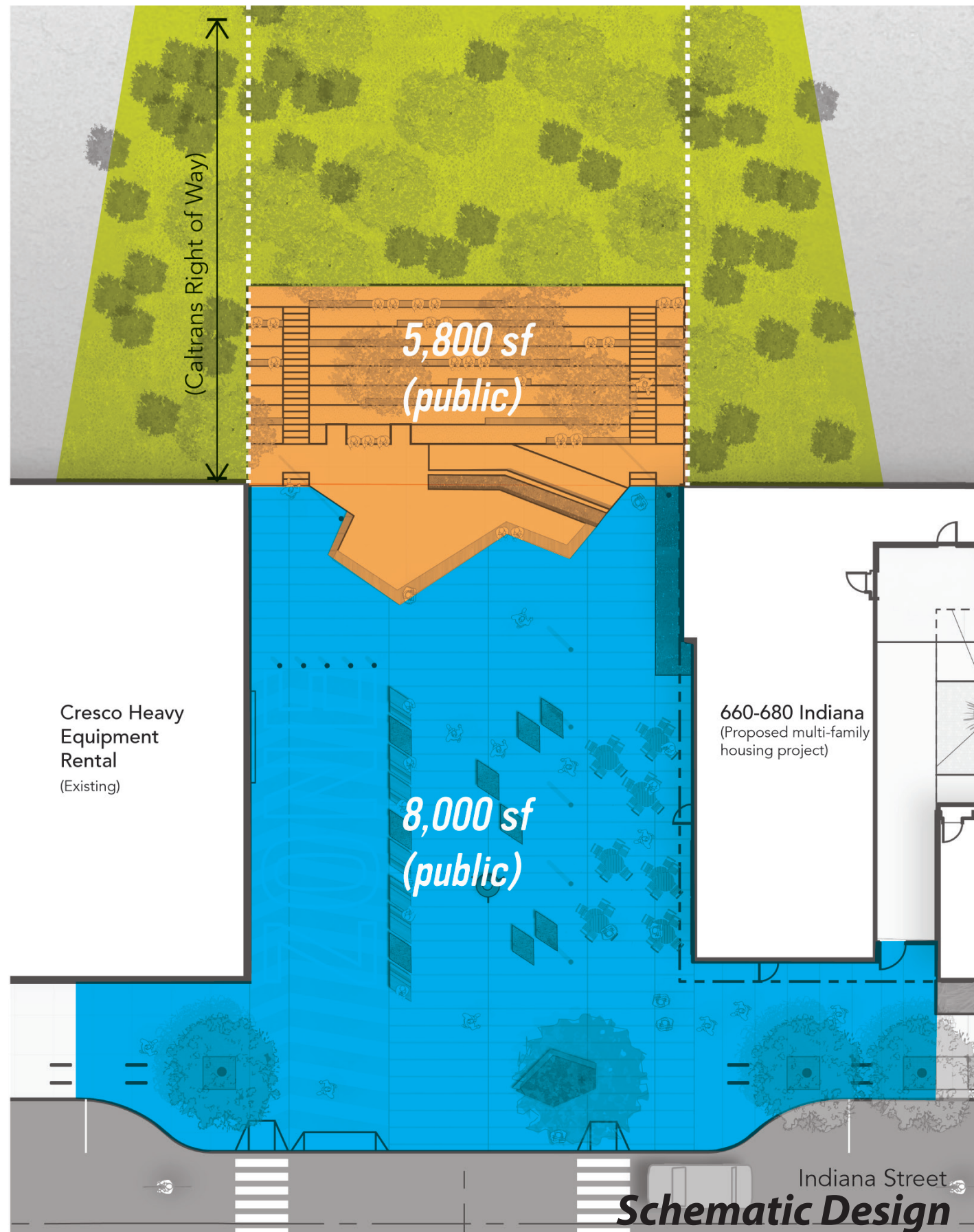


Existing Site

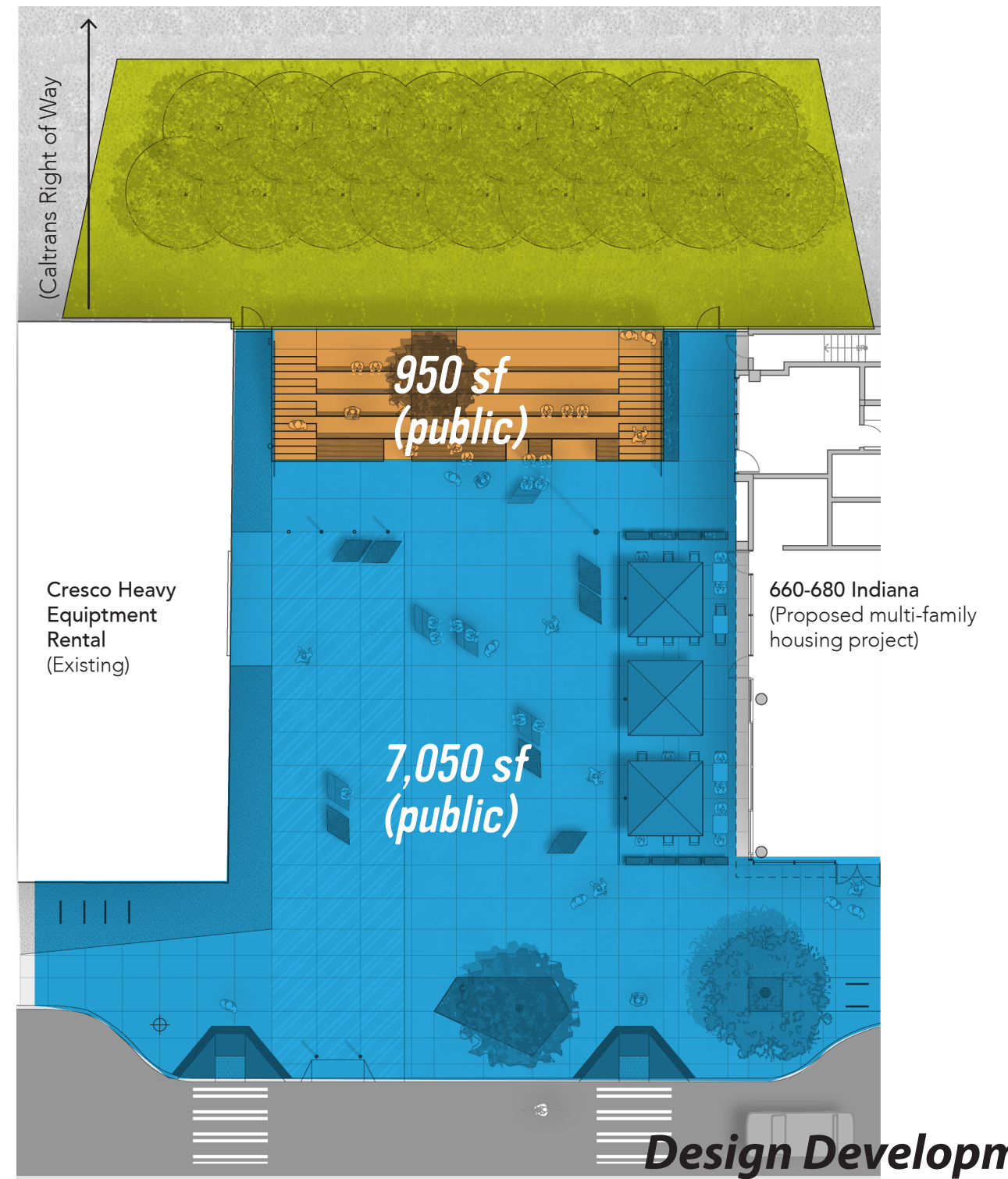


Pocket Plaza

Outdoor Gallery

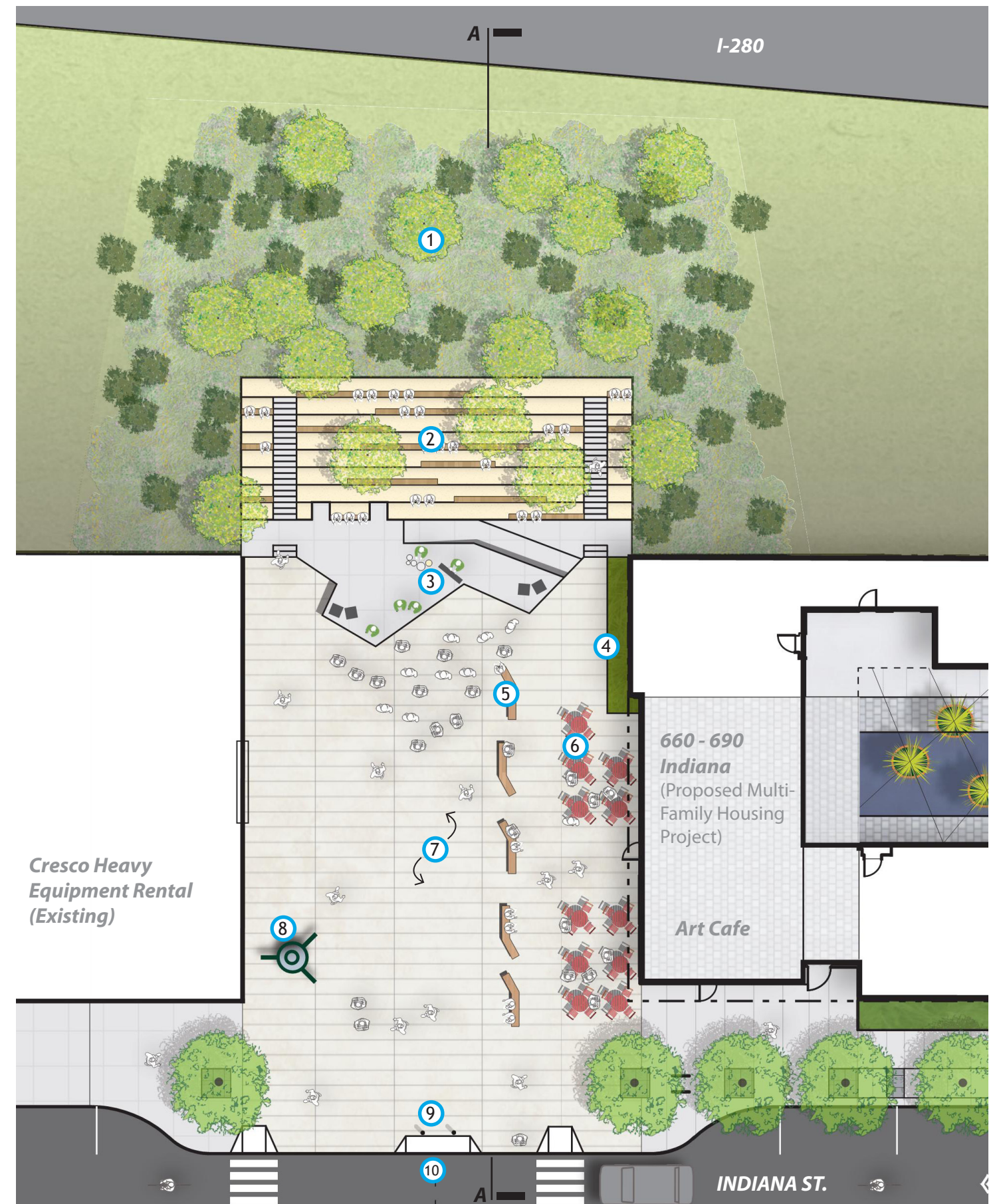


Program



KEY NOTES

- ① **Caltrans Embankment**
Landscape improvements including understory and tree planting.
- ② **Corten Steel Urban Bleachers**
Corten Wall with Concrete Bleacher and Stairs
- ③ **Event Stage**
Concrete with ADA accessible ramp
- ④ **Rain Garden Planter**
Stormwater Treatment and Buffer
- ⑤ **Custom Moveable Seating**
- ⑥ **Cafe Tables and Chairs**
- ⑦ **Plaza Floor**
High Quality Cast in Place Concrete with Ground Finish
- ⑧ **Large Scale Art Installation Site**
- ⑨ **Removeable Bollards**
- ⑩ **Curb Cut - Vehicle Access**
Limited Access for Cresco Equipment Rental and Plaza Programs

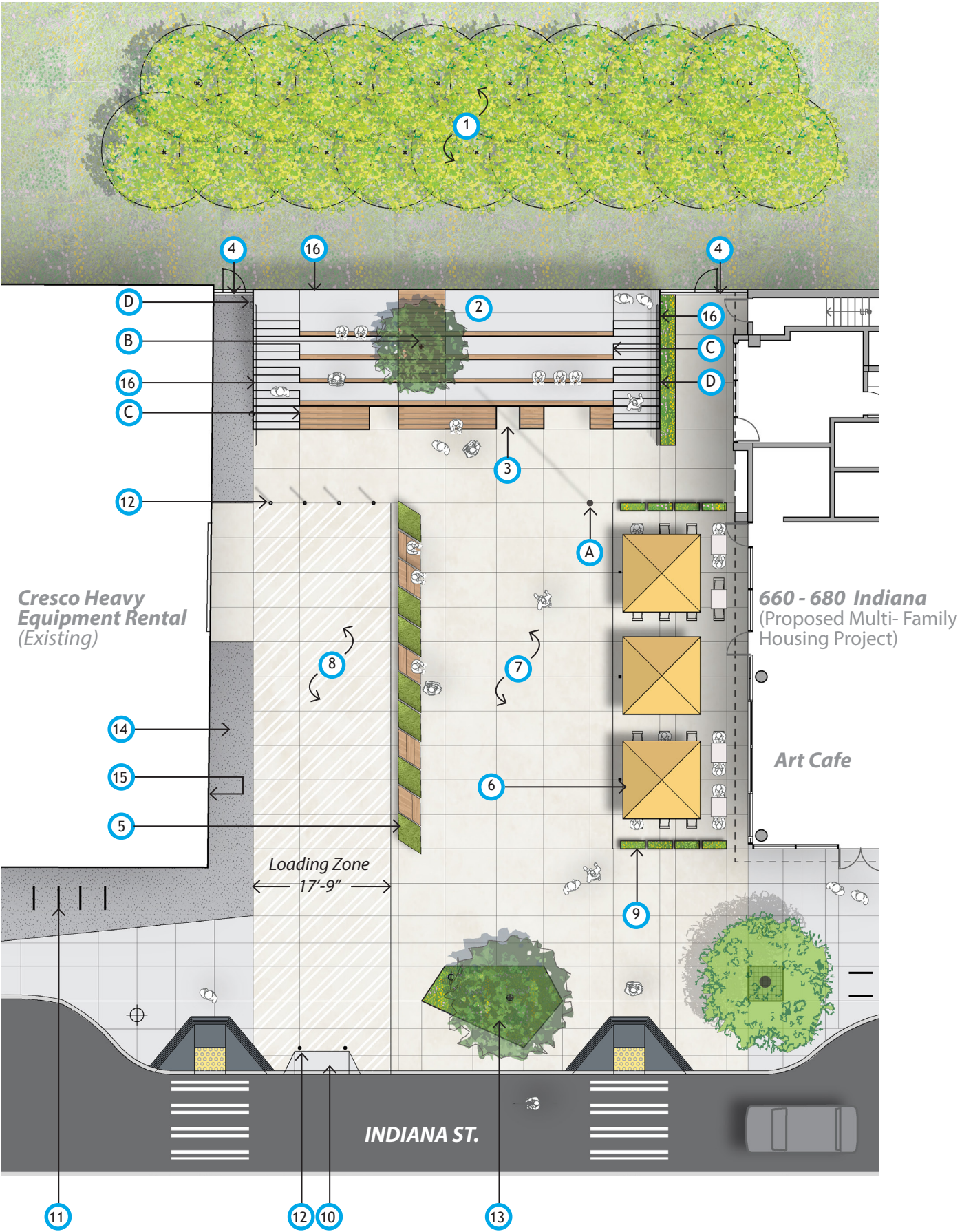


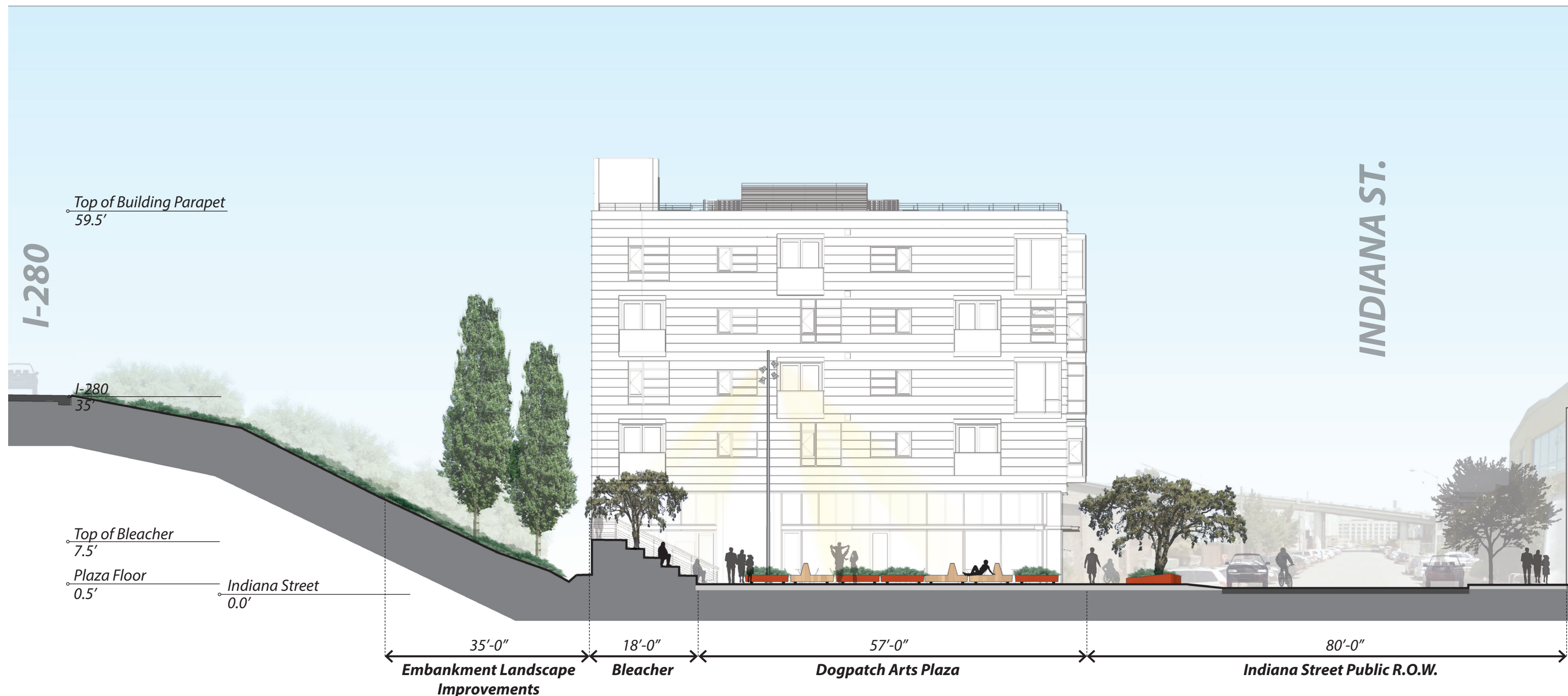
SITE LIGHTING

- A Mast Light
- B Tree Light
- C Step Light
- D Bleacher Security Light

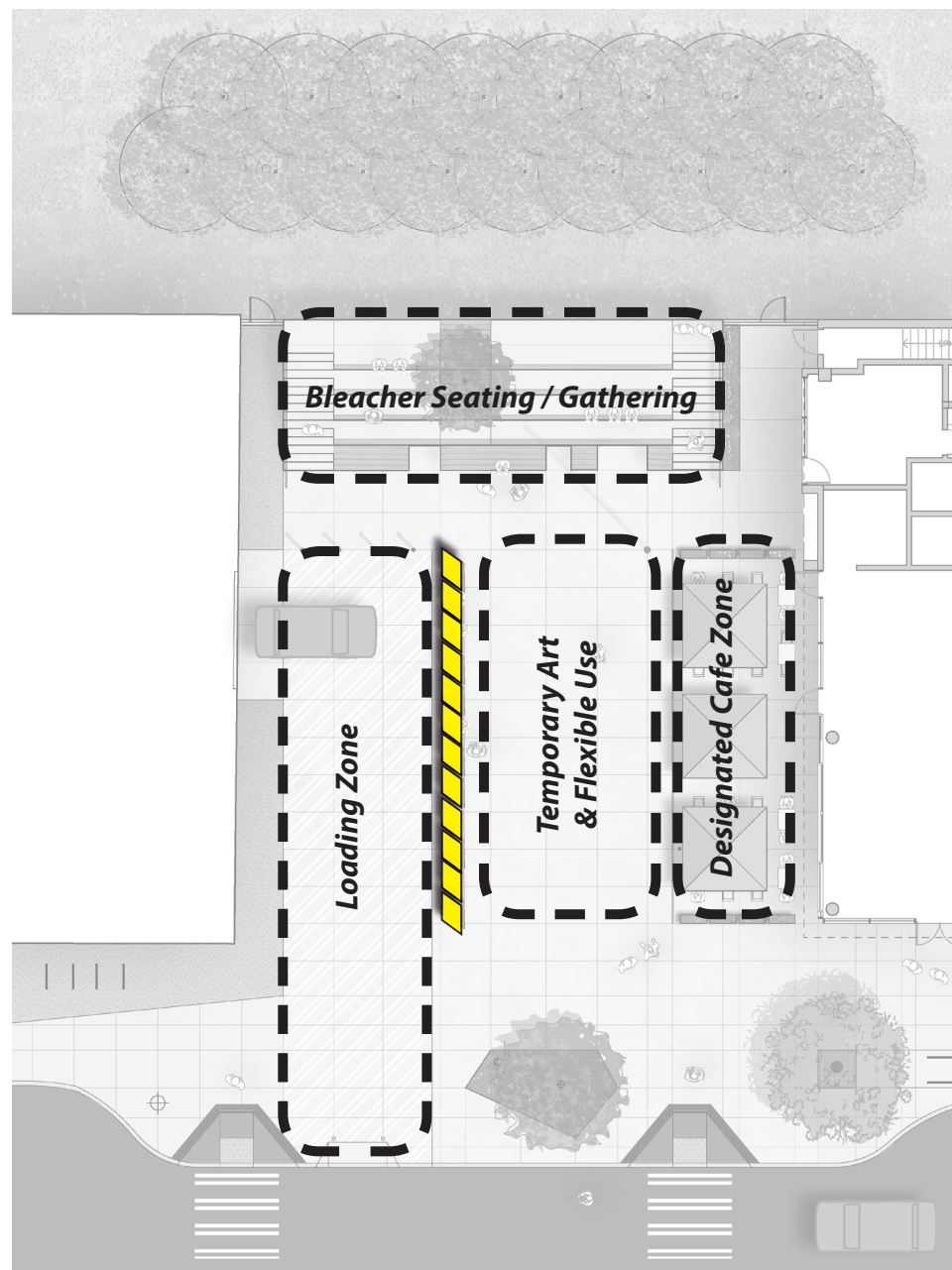
SITE ELEMENTS

- 1 Caltrans Embankment
Landscape improvements- tree planting (within Caltrans R.O.W.)
- 2 Urban Bleacher
Concrete bleacher with corten facing, wood seats and single specimen tree
- 3 ADA Accessible Seating Locations
4 Spaces Total
- 4 Security Fence and Gate
- 5 Custom Moveable Seating & Planters
- 6 Designated Area for Cafe Tables, Chairs and Shade Umbrellas
Furnishings not in project scope, to be provided by cafe owner
- 7 Plaza Floor & Designated Area for Large Scale Art Installations
High quality cast in place concrete with ground finish
- 8 Loading Zone
Painted Loading Zone
- 9 Metal Planters at Cafe
Provided by Cafe Owner
- 10 Curb Cut - Vehicle Access (10'-0" Wide)
Limited access for Cresco Equipment Rental and plaza programs.
- 11 Bike Racks
SF city standard bike racks
- 12 Removable Bollards
Plaza bollards deployed during business hours to limit pedestrian access. Removed nights/weekends and during events.
- 13 Tree Planting
Specimen tree and planting area
- 14 Gravel Apron
- 15 Gallery Wall at Cresco Building
- 16 Guardrail and Handrail
Stainless Steel Frame and Wood Toprail

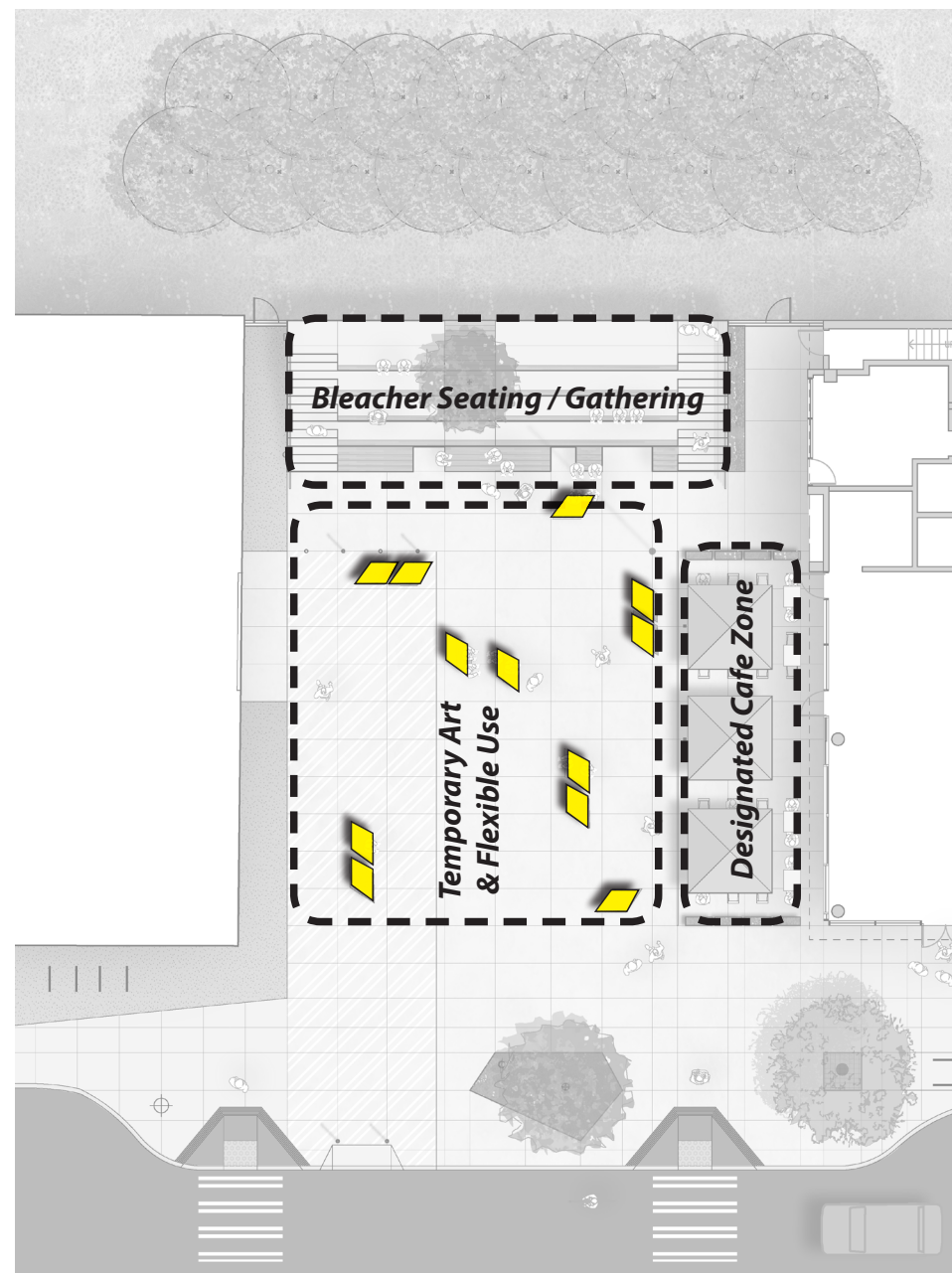




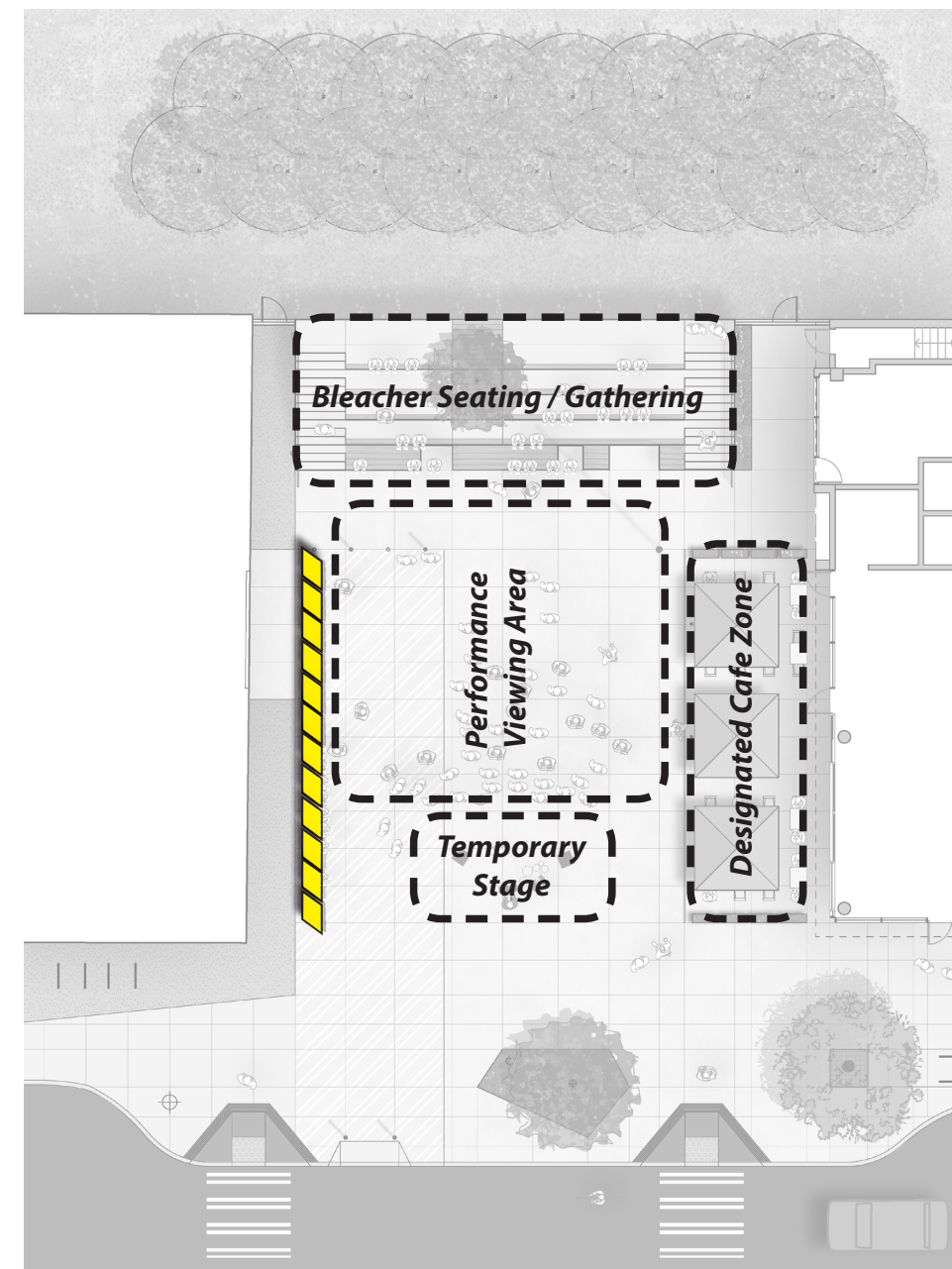
Site Section - Looking North



Weekday Arrangement
Align Mobile Planters & Benches at Edge of Loading Zone



Weekend Typical Arrangement
Moveable Seating and Planters Allow for Flexible Use



Weekend Event Arrangement
Moveable Seating and Planters Provide Performance Viewing Area

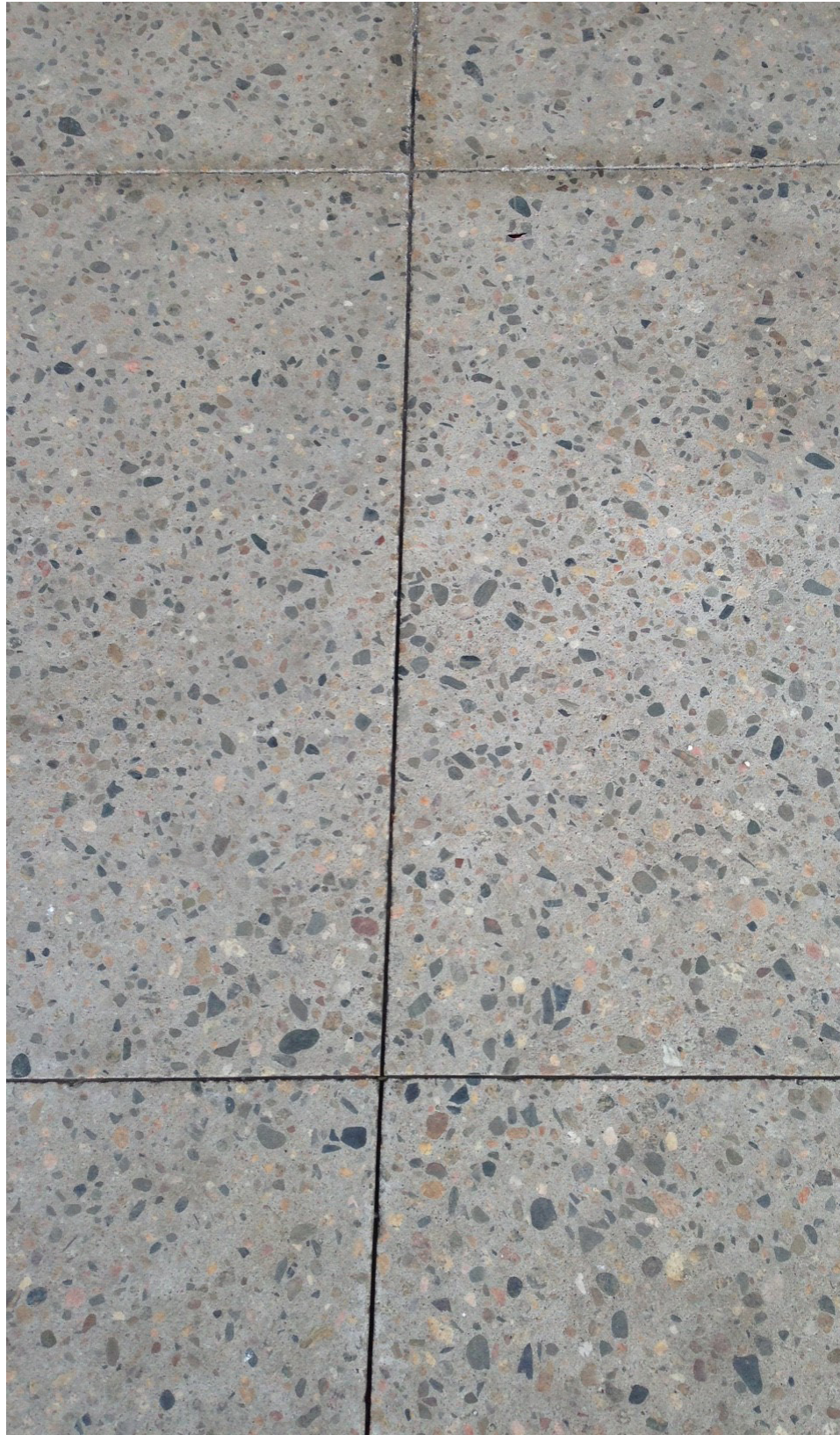








View from Art Cafe @ corner



Ground Finish Concrete - integral color & select aggregate

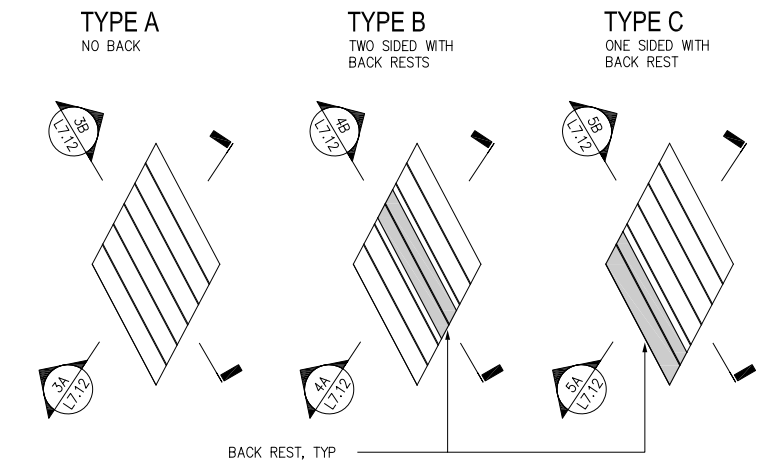
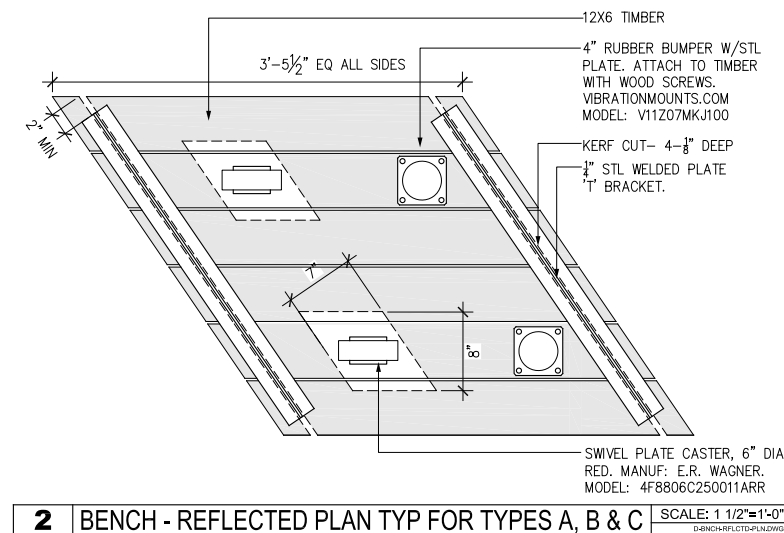
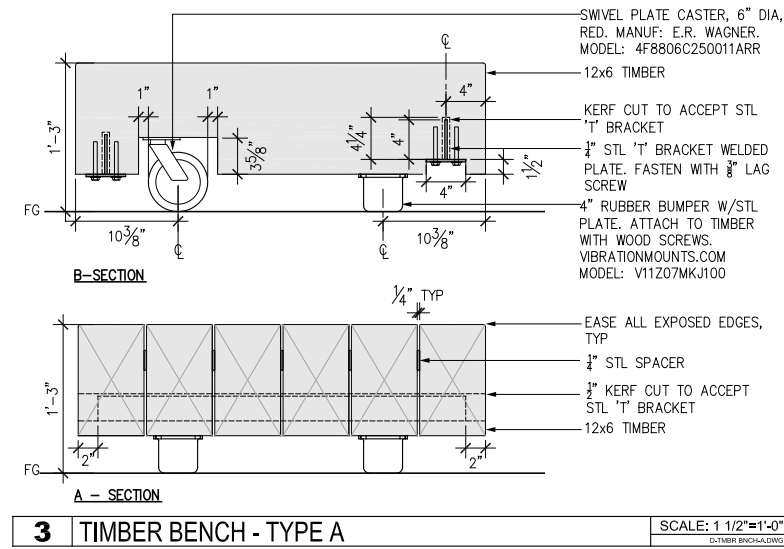
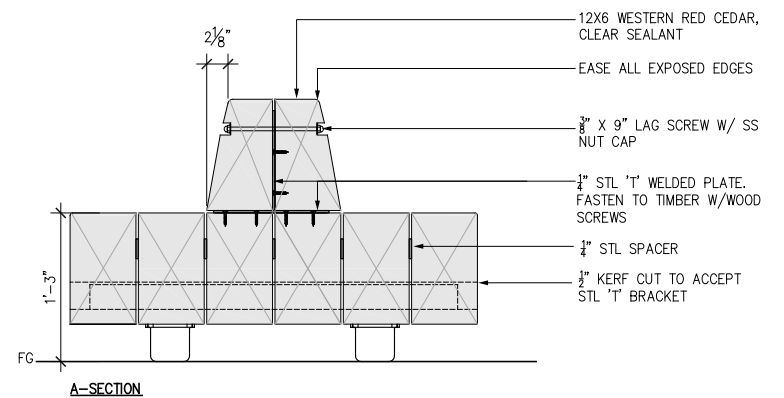
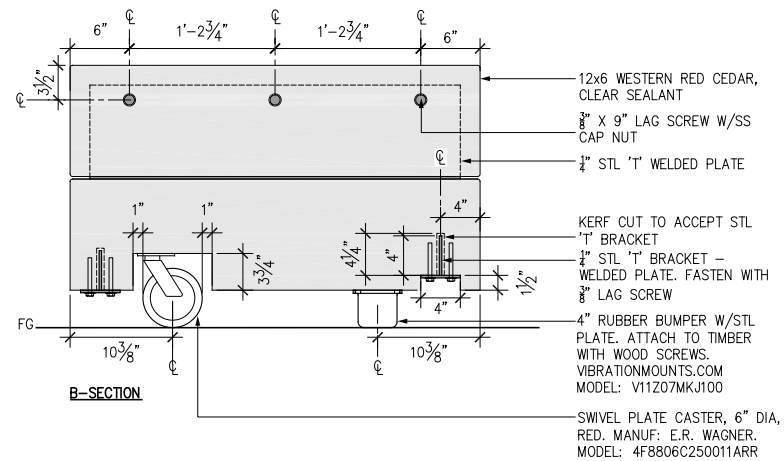
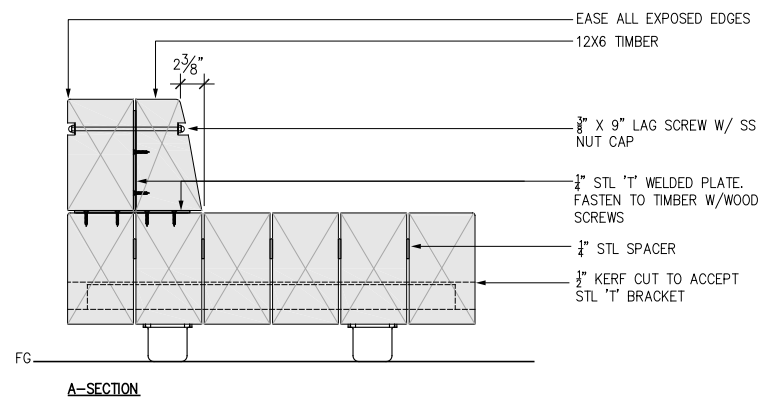
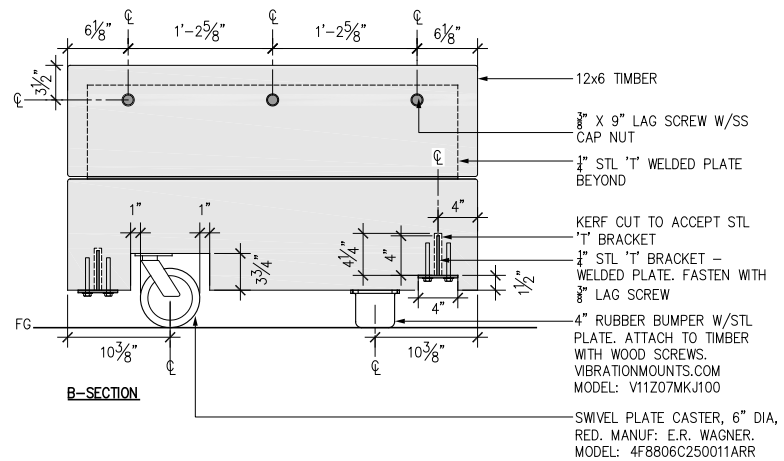
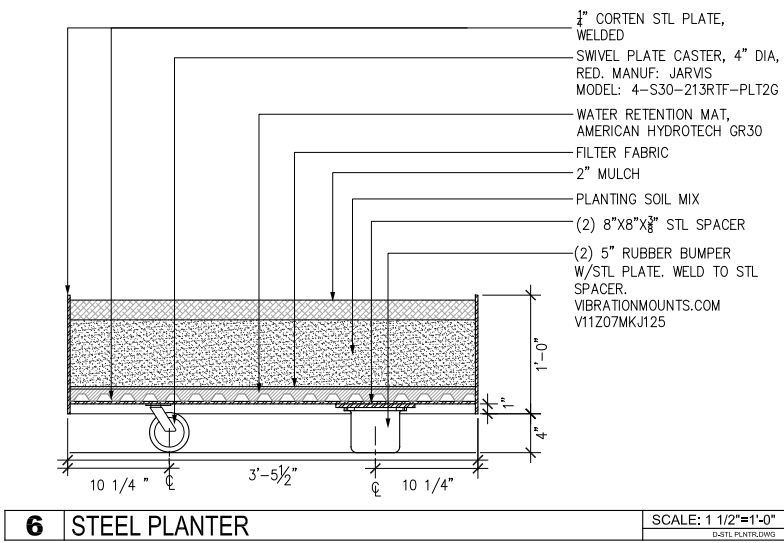


Weathered Steel



Western Red Cedar or Reclaimed Monterey Cypress

Materials

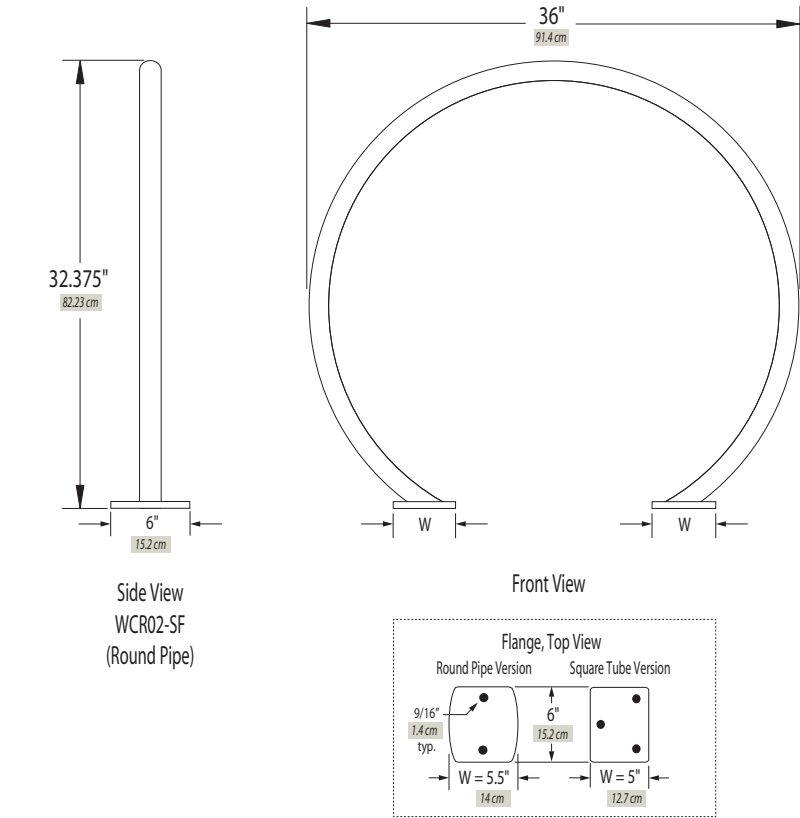






BIKEPARKING.COMTM
Tel: +1 415.333.6428 Tel: 888.764.2453 Fax: +1 415.333.2032 Email: info@bikeparking.com
Palmer Group, LLC : 1072 Folsom Street #328, San Francisco, CA 94103 USA

W




Welle™ Circular Rack, Surface Flange					
Tubing	Model	Weight	Finish Options	Hoop	Surface Mount (Same material as tubing)
Round Pipe	WCR02-SF	32 lbs 16.2 kg	-G Hot Dipped Galvanized	-G, -P, -GP 2.375" O.D. x 0.154" Wall Schedule 40 Pipe (Regular Steel)	(2) 5" x 6" x 3/8" each with (2) 9/16"
			-P Powder Coated (color)	-SS 2.375" O.D. x 0.154" Wall Schedule 40 Pipe (304 SS Alloy)	(2) 5" x 6" x 3/8" each with (2) 9/16"
			-GP Hot Dipped Galvanized with Powder Coat (color) Top-Coat		
Square Tube	WCR02-SQ-SF	38 lbs 17.1 kg	-SS Stainless #4 Brush Finish	-G, -P, -GP 2" x 2" x 0.188" Square Tube (Regular Steel)	(2) 5" x 6" x 3/8" each with (3) 9/16"
				-SS 2" x 2" x 0.188" Square Tube (304 SS Alloy)	(2) 5" x 6" x 3/8" each with (3) 9/16"

11

Welle Circular Bike Rack

Site Elements and Furniture



Retractable

Key Hole

5" 4.5" OD 35.5" 0.118" 8.7"

5/6 7/8 10

Lockable In Raised Position

Key Required To Lower No Key Required To Raise

5/6 R-8421

Lockable In Raised & Lowered Position

Key Required To Lower Key Required To Raise

7/8 R-8422

Retractable Handle

Grade

Concrete

Drain Hole

Drain Rock

12" Min

54.6" Min

42.6"

6.3"

14" MIN

& Accessories	
Material	
unt;	Steel
	Plastic
cluded per	Steel
	Steel, With Powder Coated Surface 8 lbs
	Steel, With Powder Coated Surface 5 lbs
	Steel, With Powder Coated Surface 30 lbs

RELiance FOUNDRY

CO. LTD.

Unit 207, 6450 - 148 Street, Surrey, BC, Canada V3S-7G7
1-888-735-5680 - info@reliance-foundry.com
www.reliance-foundry.com | www.bollards.ca | www.bike-parking.ca


Retractable Bollard Series, Model R-84XX


SCALE	NTS	DRAWING NUMBER	SIZE	REV.
DESIGN		R-8410/10-RA / 12/12-RA / 21/21-RA	A	A
DATE	01/10/2013			

CO. LTD.

12

Reliance Foundry Retractable Bollard





AMETCO MANUFACTURING CORPORATION
4326 HAMANN PARKWAY P.O. BOX 1210
WILLOUGHBY, OHIO 44096
800-321-7042 TOLL FREE
PHONE: (440) 951-4300
FAX: (440) 951-2542
www.ametco.com

Side View

Front View

POST

CAPPED FENCE POST

SYNTHETIC RETAINER

SAFETY SCREW

STRAP FASTENER

NOTES:

1. INSTALLATION TO BE COMPLETED IN ACCORDANCE WITH MANUFACTURER'S SPECIFICATIONS.

2. DO NOT SCALE DRAWINGS.

AMOPANEL PANELS

2" x 8" MESH, BASIC SECURITY

048-062

PROTECTED BY COPYRIGHT - 05/24/06

www.CADdetails.ca

4

Ametco Amopanel Welded Wire Security Fence and Gate

SPECIFICATION SHEET

lumenbeam™
LARGE
WHITE & STATIC COLORS

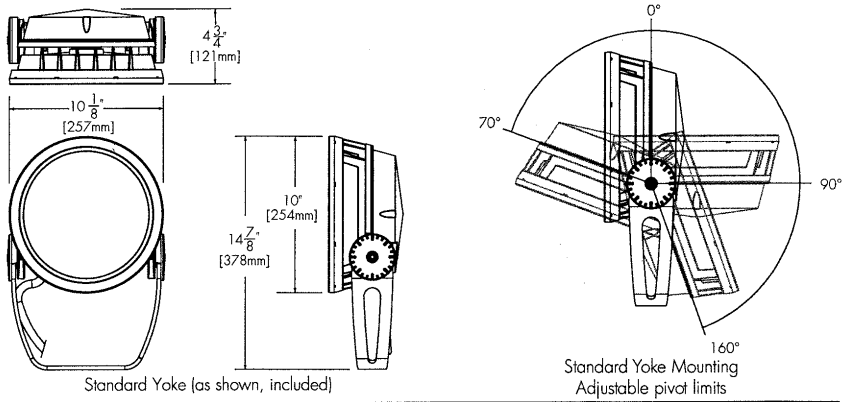
Client: _____
Project name: _____
Order #: _____
Type: _____ Qty: _____

A9

FEATURES AND BENEFITS

- Physical :
- Low copper content high pressure die-cast aluminum housing
 - Heavy aluminum formed yoke (standard yoke included)
 - Stainless steel hardware
 - Silicone sealing devices
 - Clear tempered glass
 - Dual chamber design for heat management and ease of maintenance
 - Electro-statically applied polyester powder coat finish
 - 5.44 kg / 12 lbs
 - EPA: Front = 0.94 sq. ft. / 0.087 sq. m. Side = 0.56 sq. ft./ 0.052 sq. m.
 - IP66
 - Corrosion-resistant option for marine environments
- Performance :
- Minimum 1 fc (10.7 lux) @ 329 feet (100.3m) distance (4000K, 6° optic)
 - 2,654 delivered lumens and 108,096 candelas at nadir (4000K, 6° optic)
 - 6°, 10°, 20°, 40° or 60° optics available
 - CRI value: 80+
 - lumen maintenance 120,000 hrs [L70 @ 25°C]
 - lumen measurements comply with LM - 79 - 08 standard
 - Operating temperatures: -25° C to 50° C [-13F to 122F]

- Electrical :
- Line voltage luminaire for 120 to 277V
 - Power and data in 1 cable, 3ft/1 m cord (#16-5)
 - 50 watts
 - Dimming options: 0-10 volt, DMX, DALI, lumentalk, or Lutron® EcoSystem® enabled



5 year warranty

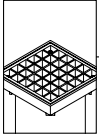
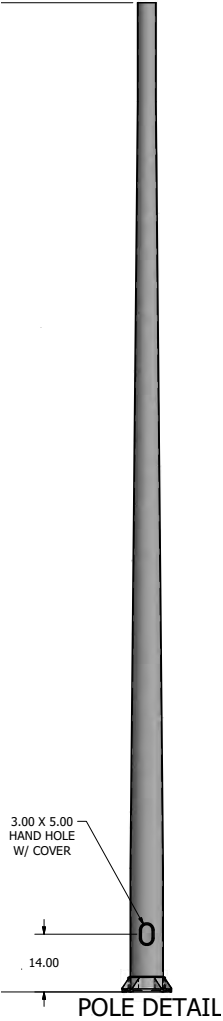
Standard Yoke (as shown, included)

Standard Yoke Mounting
Adjustable pivot limits

1/9 Lumenpulse, 1751 Richardson, Suite 1505, Montreal (Quebec) Canada H3K 1G6 1.877.937.3003 F. 514.937.3003 F. 514.937.6289
info@lumenpulse.com www.lumenpulse.com
Copyright © 2013 Lumenpulse

2013.11.05 Lumenpulse reserves the right to make changes to this product at any time without prior notice
EM - R29 and such modification shall be effective immediately.

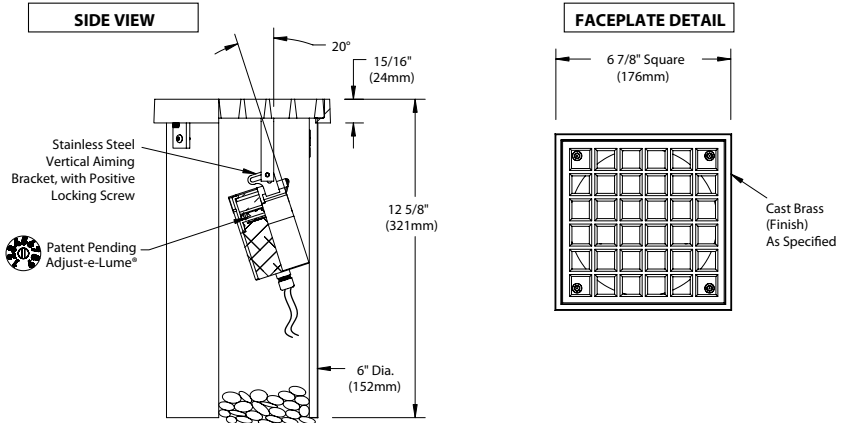
lumenpulse
Sustainable architectural LED lighting systems



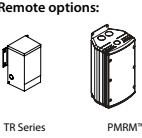
the power of
dimming
BKSSL
SOLID STATE LIGHTING
with adjust-e-Lume®
TECHNOLOGY

SQUARE ADJUSTABLE WELL STAR™

PROJECT: _____
TYPE: _____



Accessories (Configure separately)



All dimensions indicated on this submittal are nominal.
Contact Technical Sales if you require more stringent specifications.

SPECIFICATIONS

GreenSource Initiative™
Metal and packaging components are made from recycled materials. Manufactured using renewable solar energy, produced onsite. Returnable to manufacturer at end of life to ensure cradle-to-cradle handling. Packaging contains no chlorofluorocarbons (CFC's). Use of this product may qualify for GreenSource efficacy and recycling rebate(s). Consult: www.bklighting.com/greensource for program requirements.

Materials
Furnished in Brass (Type 360).

Well Cover
Installation collar is cast construction with removable grate. Flow through design. [4] Tamper resistant, stainless steel cap screws.

Body
Fully machined from solid billet. Unibody design provides enclosed, water-proof wireway and integral heat sink for maximum component life. High temperature, silicone 'O' Ring provides water-tight seal. Provided with hard-coat (Type III) black anodize finish for maximum corrosion resistance. Weather-tight cable connector with 5'0," 12Ga, 2 wire low voltage cable.

Cap
Fully machined. Accommodates [1] lens or louver media. Flush lens.

Lens
Shock resistant, tempered, glass lens is factory adhered to cap and provides hermetically sealed optical compartment. Specify soft focus (#12) or rectilinear (#13) lens.

BKSSL®
Integrated solid state system with 'e' technology is scalable for field upgrade. Modular design with electrical quick disconnects permit field maintenance. High power, forward throw source complies with ANSI C78.377 binning requirements. Exceeds ENERGY STAR® lumen maintenance requirements. LM-80 certified components.

Integral, constant current driver. 12VAC/VDC input. 50/60Hz. Proprietary input control scheme achieves power factor correction and eliminates inrush current. Output, over-voltage, open-circuit, and short circuit protected. Inrush current limited to <1A (non-dimming). Conforms to Safety Std. C22.2 No. 250.13-12.

Line dimmable. For use with low voltage dimmer with dedicated neutral conductor. Minimum 25 watt load required for dimming.

Adjust-e-Lume® (Pat. Pending)
Integral electronics allows dynamic lumen response at the individual fixture. Indexed (100% to 25% nom.) lumen output. Maintains output at desired level or may be changed as conditions require. Specify factory preset output intensity.

Optics
Interchangeable OPTIKIT™ modules permit field changes to optical distribution. Color-coded for easy reference: Narrow Spot (NSP) = Red. Spot (SP) = Green. Medium Flood (MFL) = Yellow. Wide Flood (WFL) = Blue.

Installation
6-5/8" dia., heavy wall composite housing for direct burial into soil or concrete. Flow through design for drainage (drain material by others). Stainless steel vertical aiming bracket with positive locking screw permits up to 20° vertical adjustment from nadir.

For direct burial in soil or concrete. Consult Drainage Installation Guide for In-Grade Fixtures (DIG-IT) for compliance with proper soil preparation and drainage requirements prior to installation.

Transformer
For use with 12VAC BKSSL remote transformer.

Wiring
Teflon® coated, 18AWG, 600V, 250° C rated and certified to UL 1659 standard.

Hardware
Tamper-resistant, stainless steel hardware. Well cover screws are additionally black oxide treated for additional corrosion resistance.

Finish
Brass components are available in Class 'A' TGIC polyester powder coat or handcrafted metal finish.

Warranty
5 year limited warranty.

Certification and Listing
ITL tested to IESNA LM-79. Lighting Facts Registration per USDOE (www.lightingfacts.com). ETL Listed to ANSI/UL Standard 1838 and UL Subject 8750 and Certified to CAN/CSA Standard C22.2 No. 9. RoHs compliant. Suitable for use in wet locations. Suitable for ground-mounted recessed. IP66 Rated. Made in USA.



*Teflon is a registered trademark of DuPont Corporation.
*Energy Star is a registered trademark of the United States Environmental Protection Agency.

B-K LIGHTING

40429 Brickyard Drive • Madera, CA 93636 • USA
559.438.5800 • FAX 559.438.5900
www.bklighting.com • info@bklighting.com

SUBMITTAL DATE
1-8-14

DRAWING NUMBER
SUB000969

A

Mast Light (typ of 1)

B

Bleacher Tree Uplight Light (typ of 2)

Recessed wall luminaire

Housing: Constructed of die cast and extruded aluminum with integral wiring compartment. Mounting tabs provided.

Enclosure: One piece die cast aluminum faceplate, 1/8" thick. Clear tempered glass with translucent white ceramic coating. Faceplate is secured by two (2) socket head, stainless steel, captive screws threaded into stainless steel inserts in the housing casting. Continuous high temperature O-ring gasket for weather tight operation.

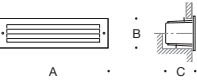
Electrical: 3.4W LED luminaire, 4.5 total system watts, -25°C start temperature. Integral 120V through 277V electronic LED driver, 0 -10V dimming. The LED and driver are mounted on a removable plate for easy replacement. Standard LED color temperature is 3000K (available in 4000K; add suffix K4). Through Wiring: Maximum four (4) No. 12 AWG conductors (plus ground) suitable for 75°C. Provided with 1/2" NPT threaded conduit entries.

Note: Due to the dynamic nature of LED technology, LED luminaire data on this sheet is subject to change at the discretion of BEGA-US. For the most current technical data, please refer to www.bega-us.com.

Finish: These luminaires are available in four standard BEGA colors Black (BLK); White (WHT); Bronze (BRZ); Silver (SLV). To specify, add appropriate suffix to catalog number. Custom colors supplied on special order.

UL listed, suitable for wet locations and for installation within 3 feet of ground. Type non-IC. Protection class: IP64.

Luminaire Lumens: 4
Tested in accordance with LM-79-08



Lamps		A	B	C
2195LED	ADA	3.4 W LED	6	2 1/2 4 1/4

BEGA-US 1000 BEGA Way, Carpinteria, CA 93013 (805) 684-0533 FAX (805) 566-9474 www.bega-us.com
©copyright BEGA-US 2012 Updated 10/12

Type:
BEGA Product:
Project:
Voltage:
Color:
Options:
Modified:



Recessed wall luminaires · shielded

Housing: Die-cast aluminum with integral wiring compartment. Die castings are marine grade, copper free (≤ 0.3% copper content) A360.0 aluminum alloy.

Enclosure: One piece die-cast aluminum faceplate. 1/8" thick, tempered glass; clear with white translucent ceramic coating. Faceplate is secured by four (4) socket head, stainless steel, captive screws threaded into stainless steel inserts in the housing casting. Continuous high temperature O-ring gasket for weather tight operation.

Electrical: 10.5W LED luminaire, 12.8 total system watts, -30°C start temperature. Integral 120V through 277V electronic LED driver, 0-10V dimming. LED module(s) are available from factory for easy replacement. Standard LED color temperature is 3000K with an 85 CRI. Available in 4000K (85 CRI); add suffix K4 to order.

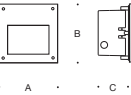
Note: LEDs supplied with luminaire. Due to the dynamic nature of LED technology, LED luminaire data on this sheet is subject to change at the discretion of BEGA-US. For the most current technical data, please refer to www.bega-us.com.

Finish: All BEGA standard finishes are polyester powder coat with minimum 3 mil thickness. Available in four standard BEGA colors: Black (BLK); White (WHT); Bronze (BRZ); Silver (SLV). To specify, add appropriate suffix to catalog number. Custom colors supplied on special order.

CSA certified to U.S. and Canadian standards, suitable for wet locations. Protection class IP65

Weight: 3.5 lbs.

Luminaire Lumens: 160
Tested in accordance with LM-79-08



Recessed Luminaires · shielded light					
Lamp		A	B	C	CPC
2372 LED	ADA	10.5W LED	7 1/2	7 1/2	4 C522

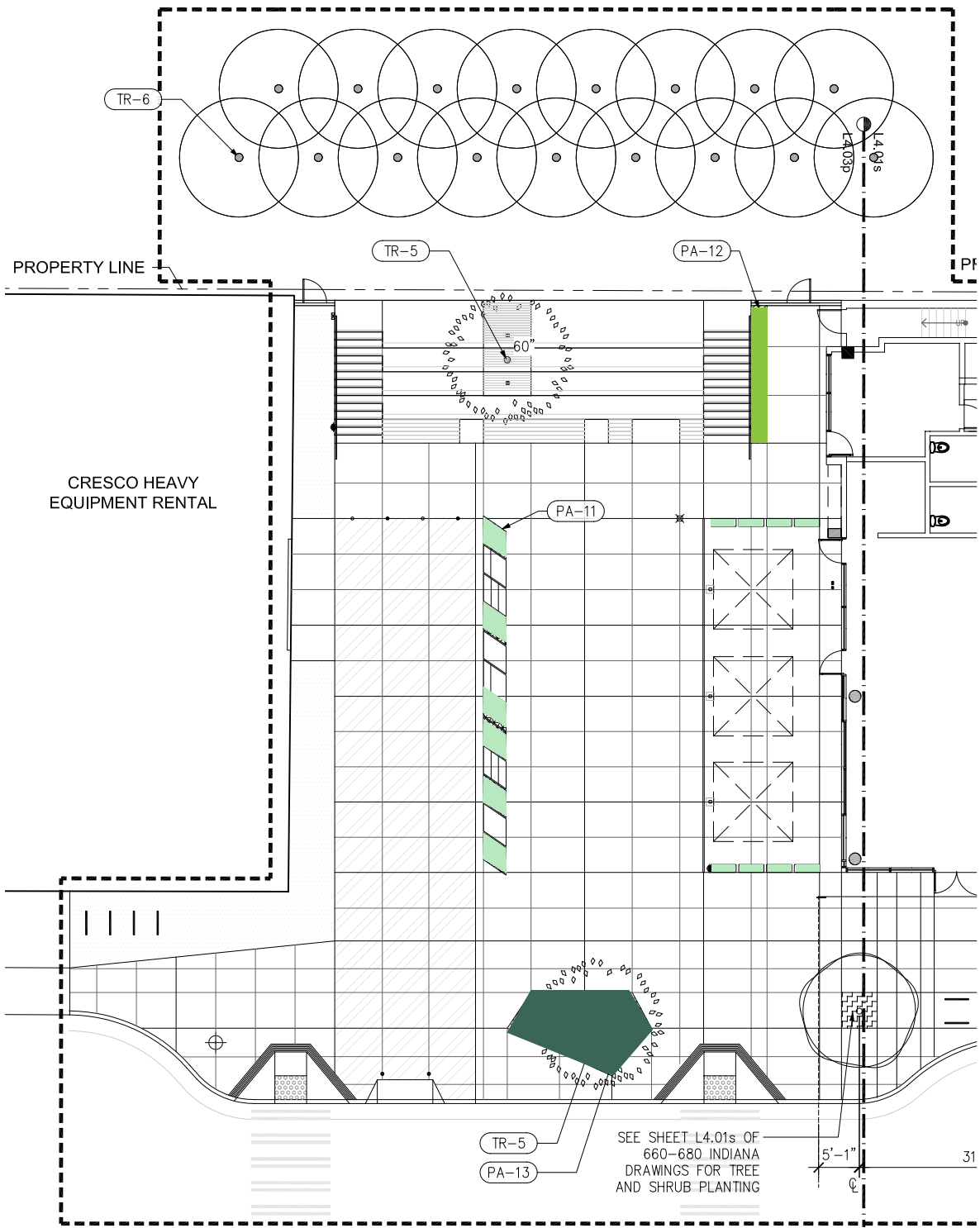
BEGA-US 1000 BEGA Way, Carpinteria, CA 93013 (805) 684-0533 FAX (805) 566-9474 www.bega-us.com
©copyright BEGA-US 2014 Updated 05/14

Type:
BEGA Product:
Project:
Voltage:
Color:
Options:
Modified:



C Bleacher Step Light (typ of 10)

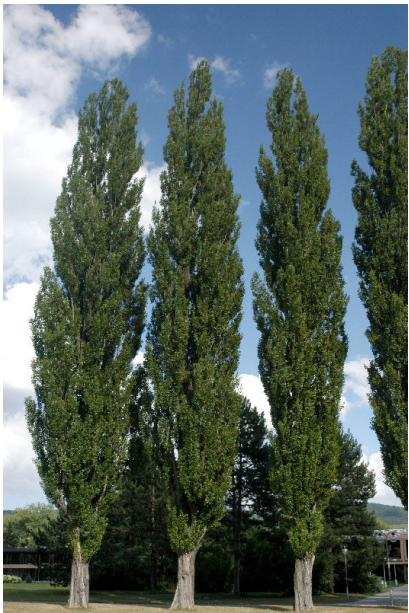
D Bleacher Security Light (typ of 2)



PLANTING SCHEDULE					
SYMBOL	TAG	LATIN NAME	COMMON NAME	SIZE	SPACING
TREES					
	TR-5	QUERCUS AGRIFOLIA	COAST LIVE OAK	60"-84" BOX	PER PLAN
	TR-6	POPULUS NIGRA	LOMBARDY POPLAR	24" BOX	PER PLAN
SHRUBS / GROUNDCOVERS / VINES					
	PA-11	MOBILE PLANTERS			
		AEONIU "KIWI"	KIWI AEONIUM	1 GAL	PER PLAN
		ECHEVERIA "AFTERGLOW"	AFTERGLOW ECHEVERIA	1 GAL	PER PLAN
		ECHEVERIA IMBRICATA	HENS AND CHICKS	4" POT	PER PLAN
		SEDUM RUPESTRE "LEMON CORAL"	LEMON CORAL STONECROP	4" POT	PER PLAN
		ALOE "BLUE ELF"	BLUE ELF ALOE	1 GAL	PER PLAN
		ALOE POLYPHYLLA	SPIRAL ALOE	1 GAL	PER PLAN
	PA-12	NORTH SIDE OF BLEACHER			
		LONICERA HILDEBRANDIANA	GIANT BURMESE HONEYSUCKLE	5 GAL	PER PLAN
		KNIPHOFIA "SHINING SEPTRE"	ORANGE HOT POKER	1 GAL	12" O.C.
	PA-13	STREET SIDE PLANTER			
		BOUTELOUA GRACILIS "BLONDE AMBITION"	BLONDE AMBITION BLUE GRAMA GRASS	5 GAL	18" O.C.
		IRIS DOUGLASIANA	DOUGLAS IRIS	5 GAL	18" O.C.



Quercus agrifolia
Coast Live Oak



Populus nigra
Lombardy Poplar

PA-11- Mobile Planters



Aeonium 'Kiwi'
Kiwi Aeonium



Echeveria 'afterglow'
Afterglow Echeveria



Echeveria imbricata
Hens and Chicks



Sedum rupestre 'lemon coral'
Lemon Coral Stonecrop



Aloe 'Blue Elf'
Blue Elf Aloe



Aloe polyphylla
Spiral Aloe

PA-12- Planting at North Side of Bleacher



Lonicera hildebrandiana
Giant Burmese Honeysuckle



Kniphofia 'Shining Septre'
Orange Hot Poker

PA-13- Street Side Planter



Boutelou gracilis 'Blonde Ambition'
Blonde Ambition Blue Grama Grass



Iris douglasiana
Douglas Iris

Q & A