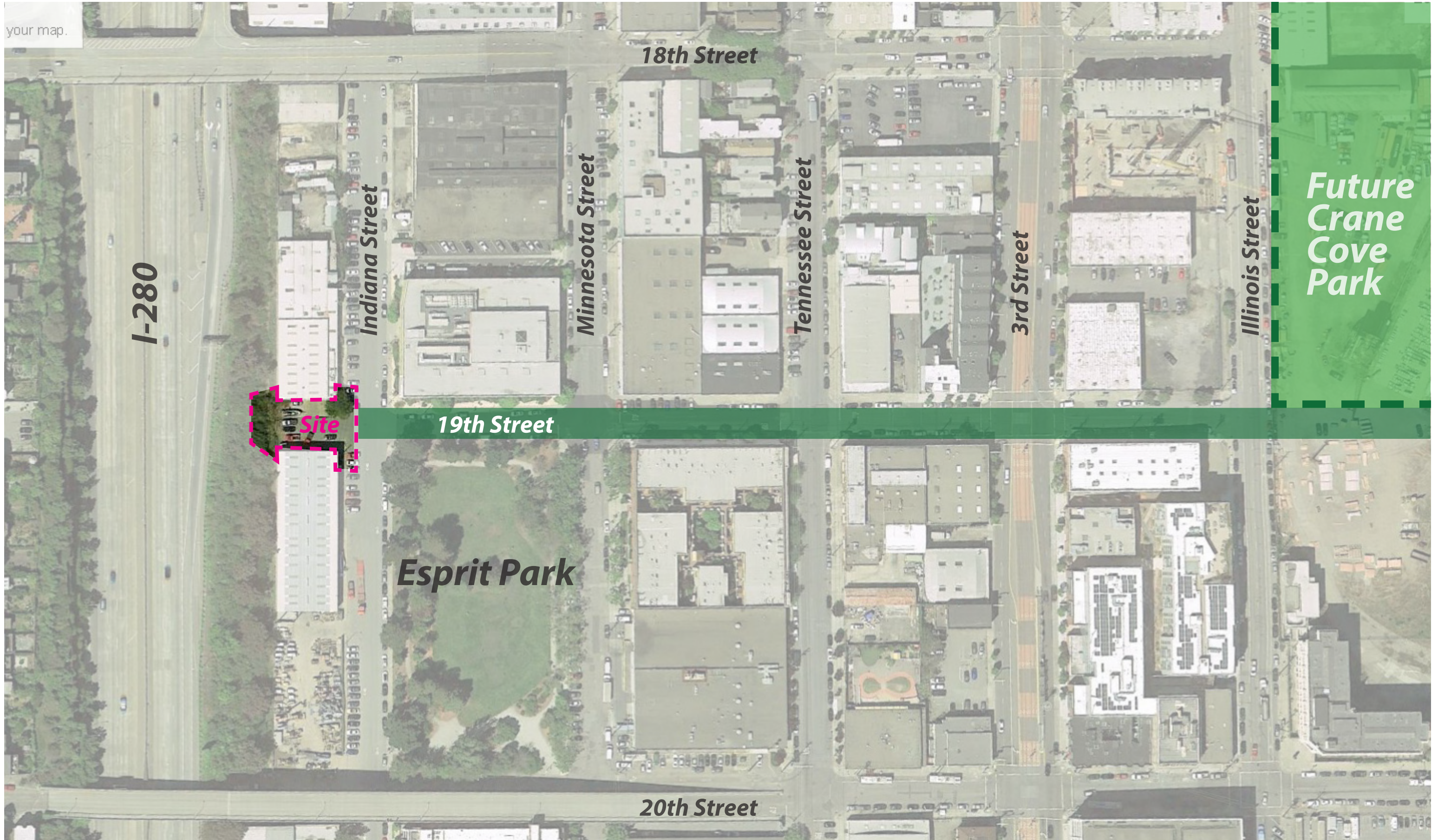


# ***Dogpatch Arts Plaza***

**CONSTRUCTION DOCUMENTS PHASE 3- CIVIC DESIGN REVIEW 07.20.2015**



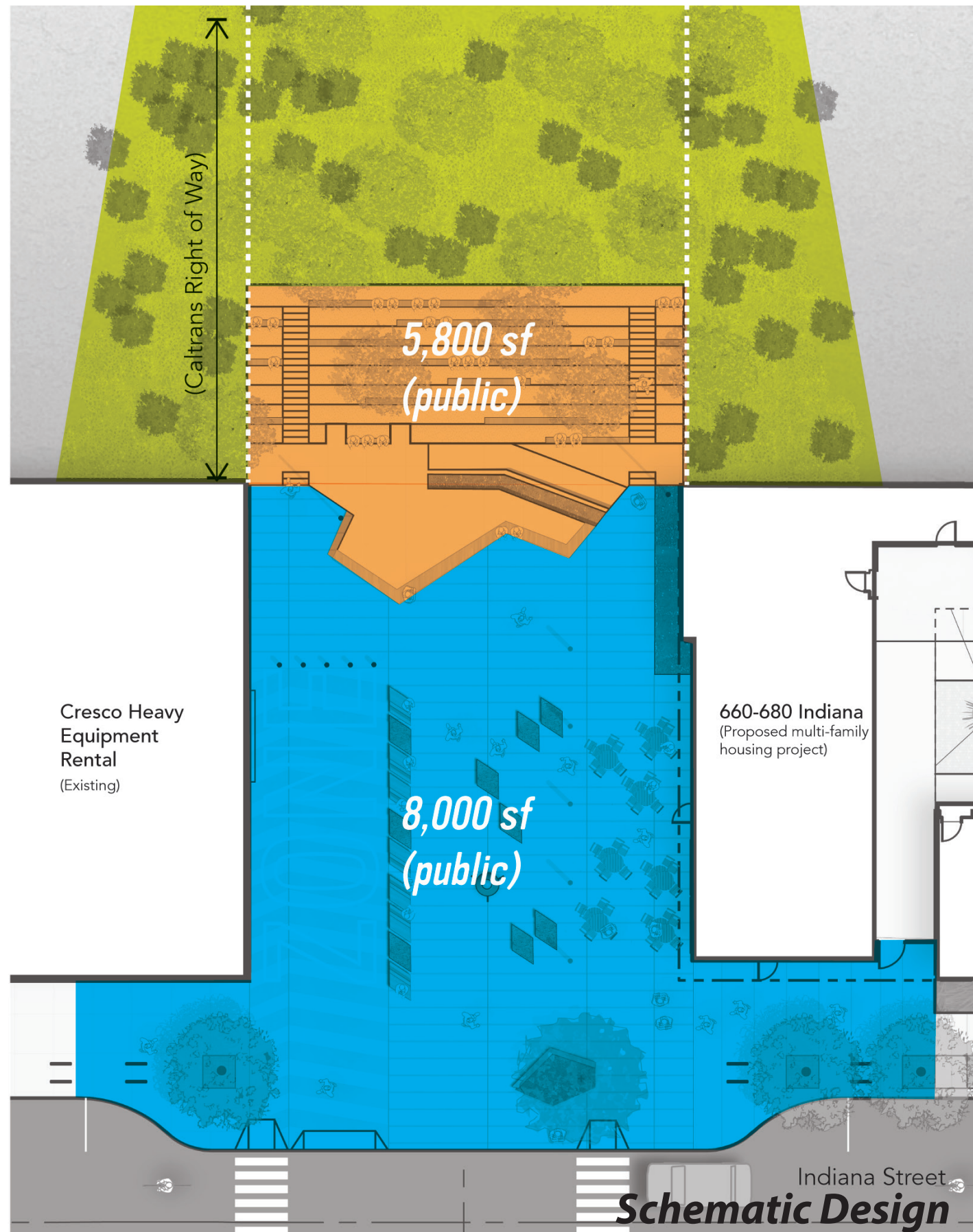
**Context-** 19th Street Becomes "Shared Use Greenway"



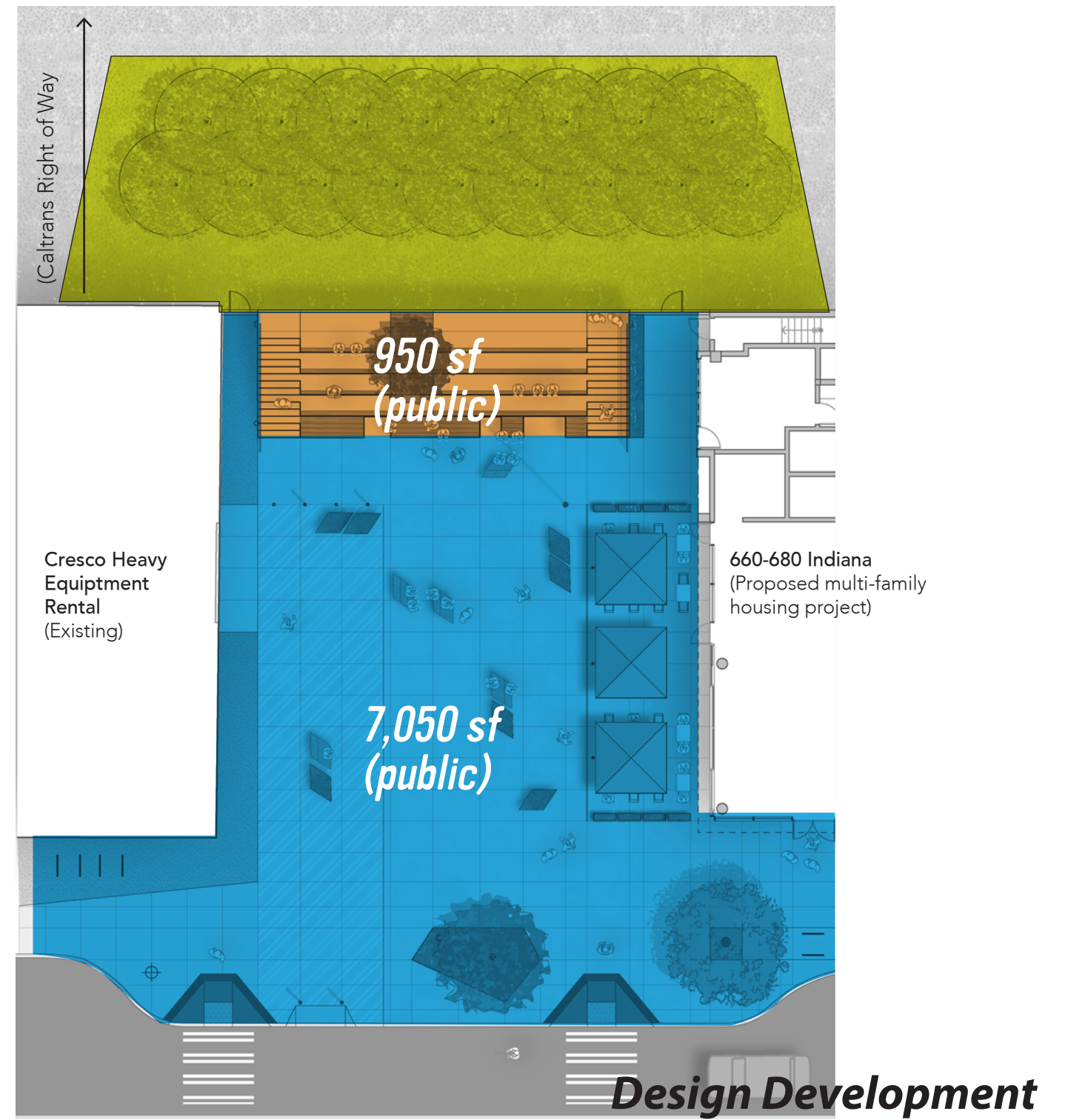


*Pocket Plaza*

*Outdoor Gallery*



**Program**

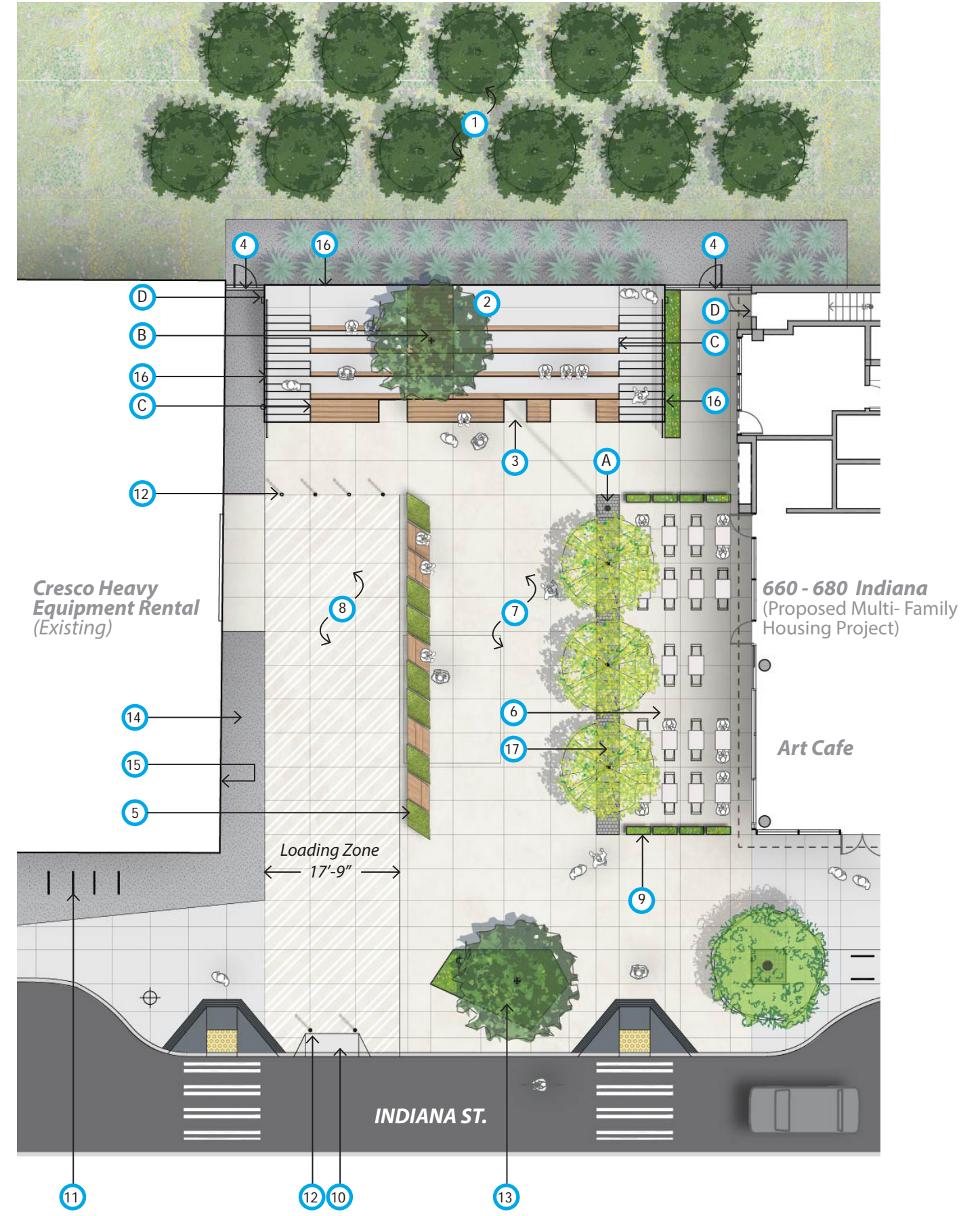


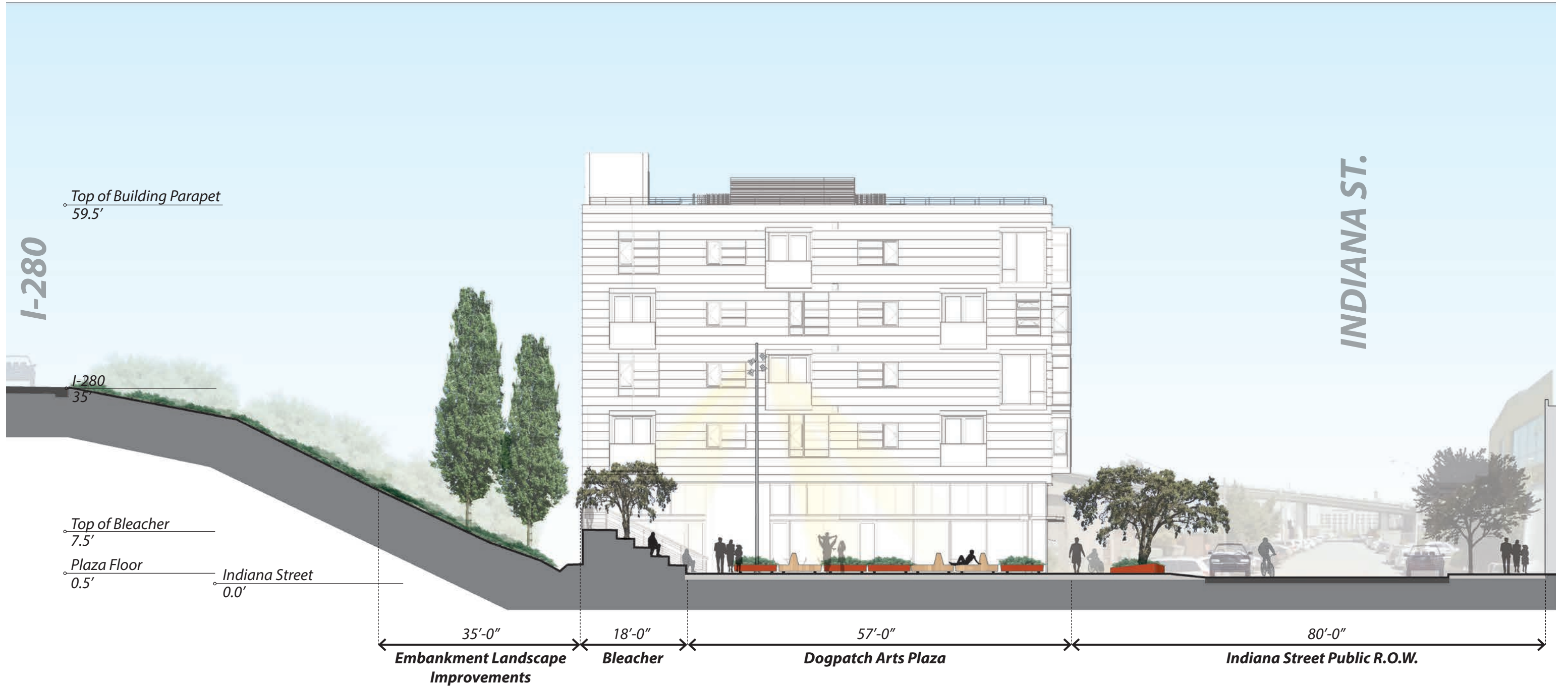
**SITE LIGHTING**

- (A) Mast Light
- (B) Tree Light
- (C) Step Light
- (D) Bleacher Security Light

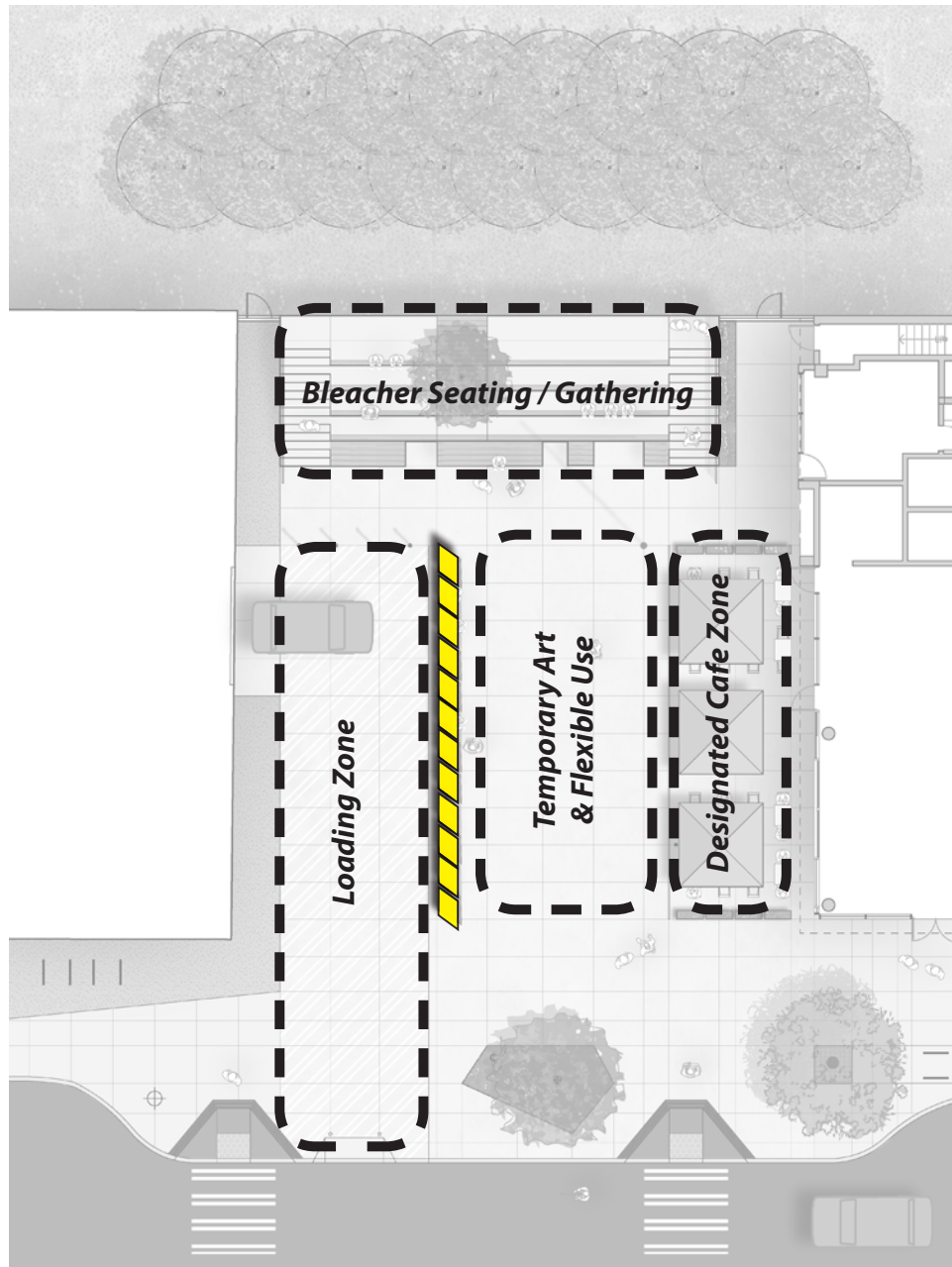
**SITE ELEMENTS**

- (1) **Caltrans Embankment**  
Landscape improvements- tree planting (within Caltrans R.O.W.)
- (2) **Urban Bleacher**  
Concrete bleacher with corten facing, wood seats and single specimen tree
- (3) **ADA Accessible Seating Locations**  
4 Spaces total
- (4) **Security Fence and Gate**
- (5) **Custom Moveable Seating & Planters**
- (6) **Designated Area for Cafe Tables and Chairs**  
Furnishings not in project scope, to be provided by cafe owner
- (7) **Plaza Floor & Designated Area for Large Scale Art Installations**  
High quality cast in place concrete with ground finish
- (8) **Loading Zone**  
Painted loading zone
- (9) **Metal Planters at Cafe**  
Provided by cafe owner
- (10) **Curb Cut - Vehicle Access (10'-0" Wide)**  
Limited access for Cresco Equipment Rental and plaza programs.
- (11) **Bike Racks**  
SF city standard bike racks
- (12) **Removable Bollards**  
Plaza bollards deployed during business hours to limit pedestrian access. Removed nights/weekends and during events.
- (13) **Tree Planting**  
Specimen tree and planting area
- (14) **Gravel Apron**
- (15) **Gallery Wall at Cresco Building**
- (16) **Guardrail and Handrail**  
Wire mesh infill and wood top rail
- (17) **Permeable Paving/Tree Drainage Zone**

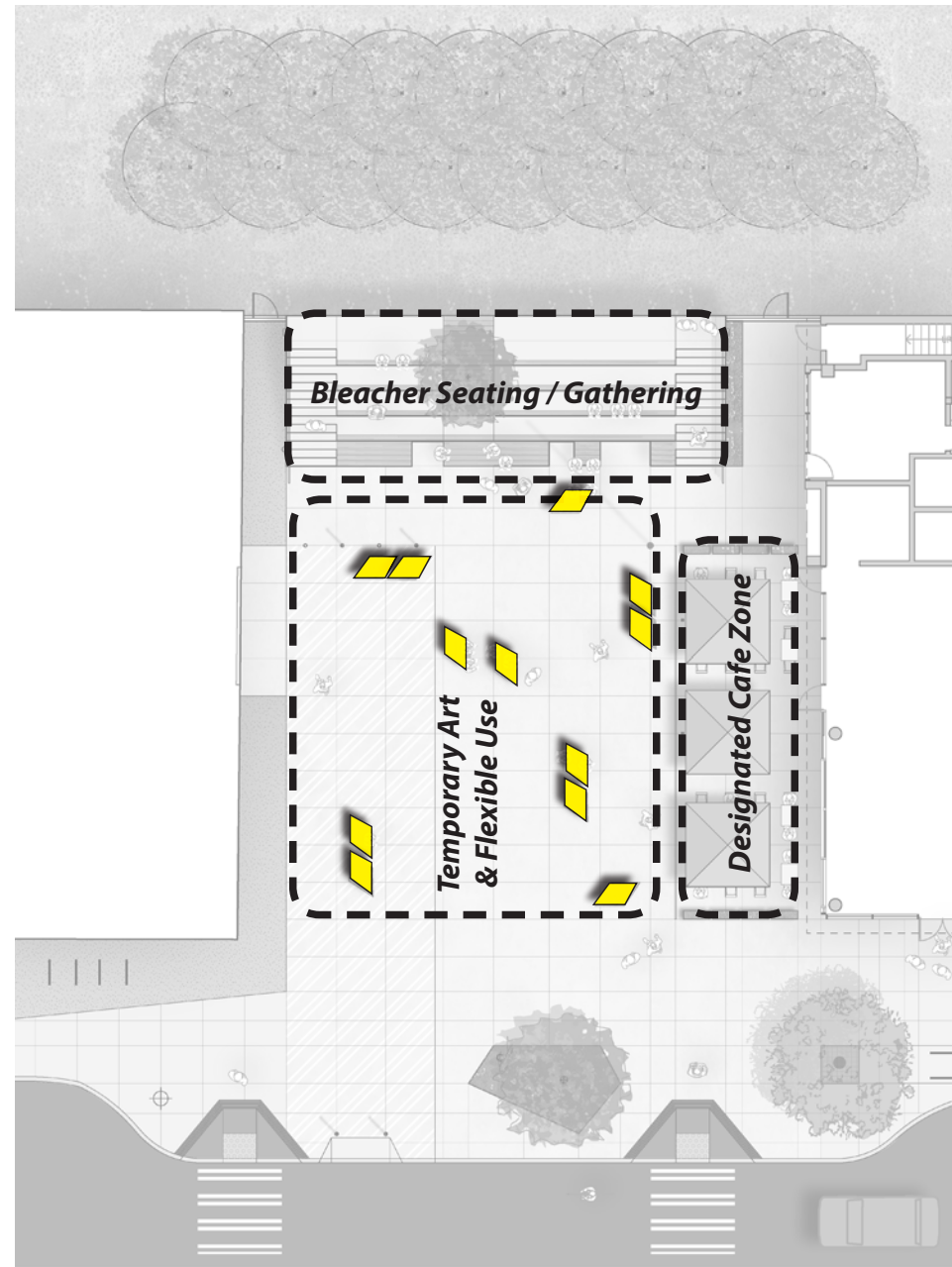




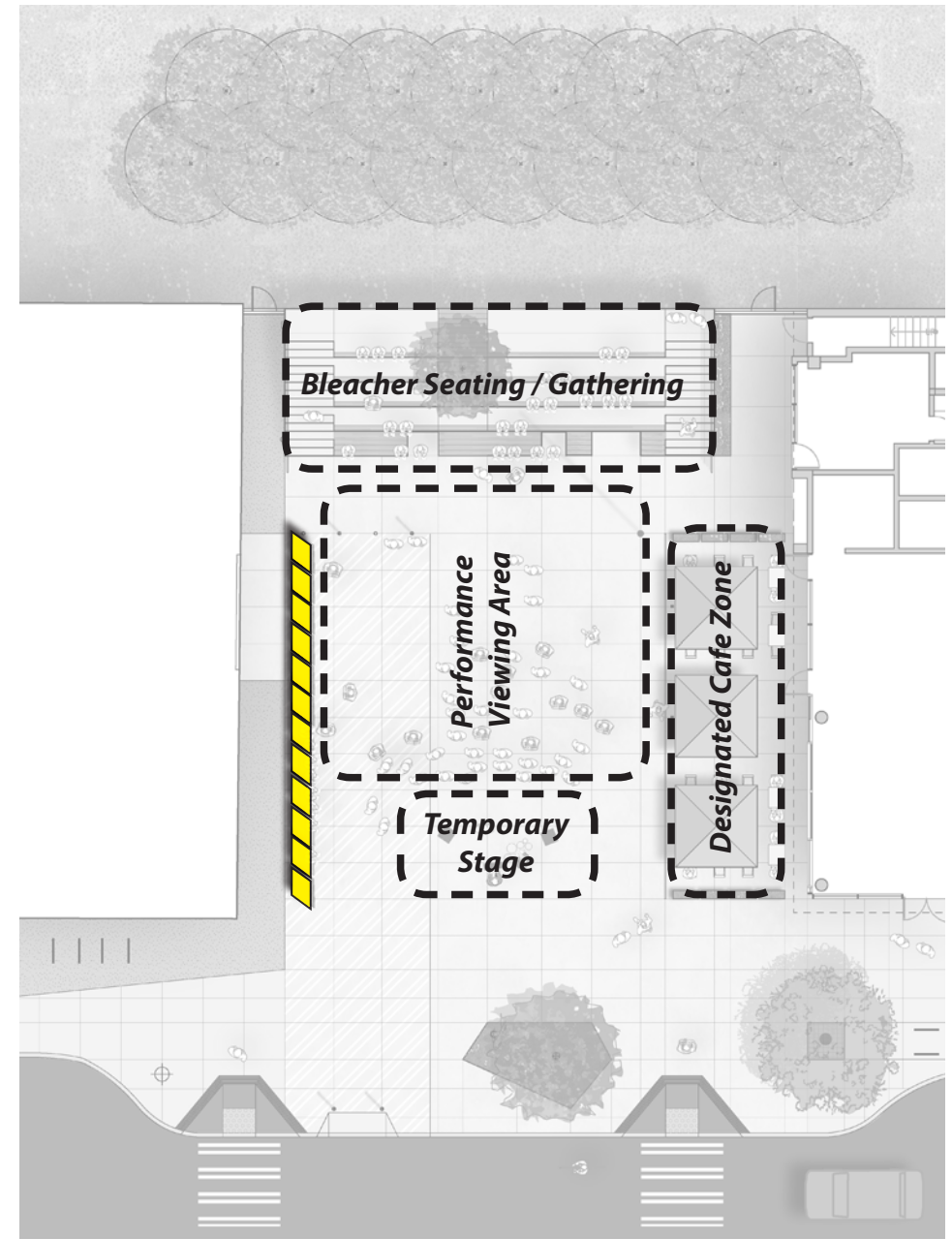
**Site Section - Looking North**



**Weekday Arrangement**  
Align Mobile Planters & Benches at Edge of Loading Zone



**Weekend Typical Arrangement**  
Moveable Seating and Planters Allow for Flexible Use



**Weekend Event Arrangement**  
Moveable Seating and Planters Provide Performance Viewing Area







**View @ Corner of 19th toward Art Cafe**

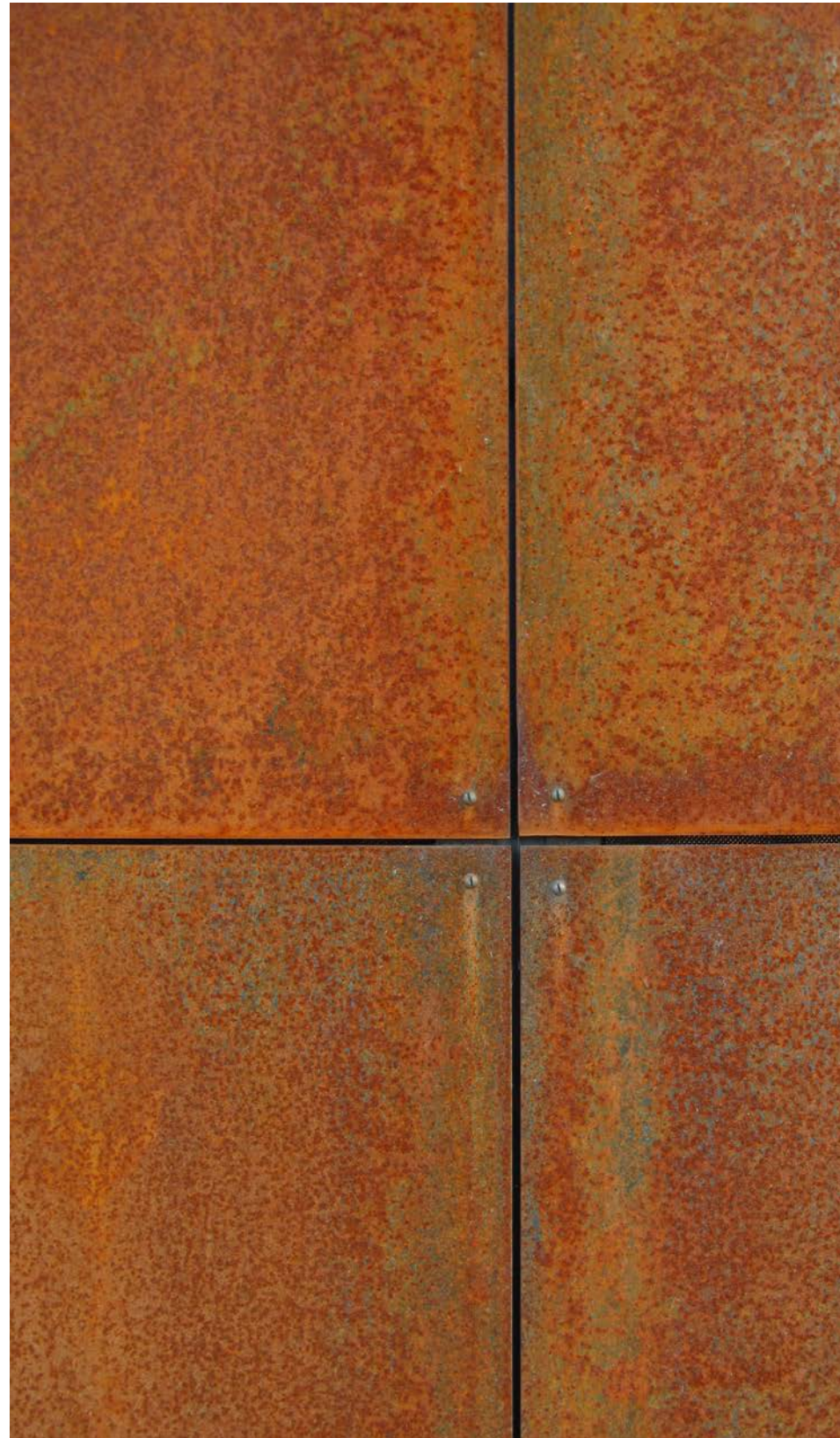




**View from Art Cafe @ corner**



*Ground Finish Concrete - with select aggregate*



*Weathered Steel*



*Western Red Cedar*

## ***Materials***



Permeable Paver at walks connecting cafe zone with plaza.



Ground concrete finish for plaza.

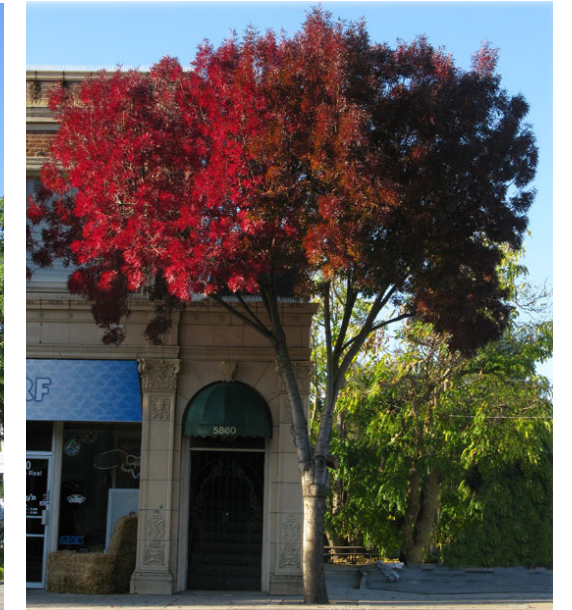


Crushed Rock along south edge of plaza (at Cresco) and below cafe trees.

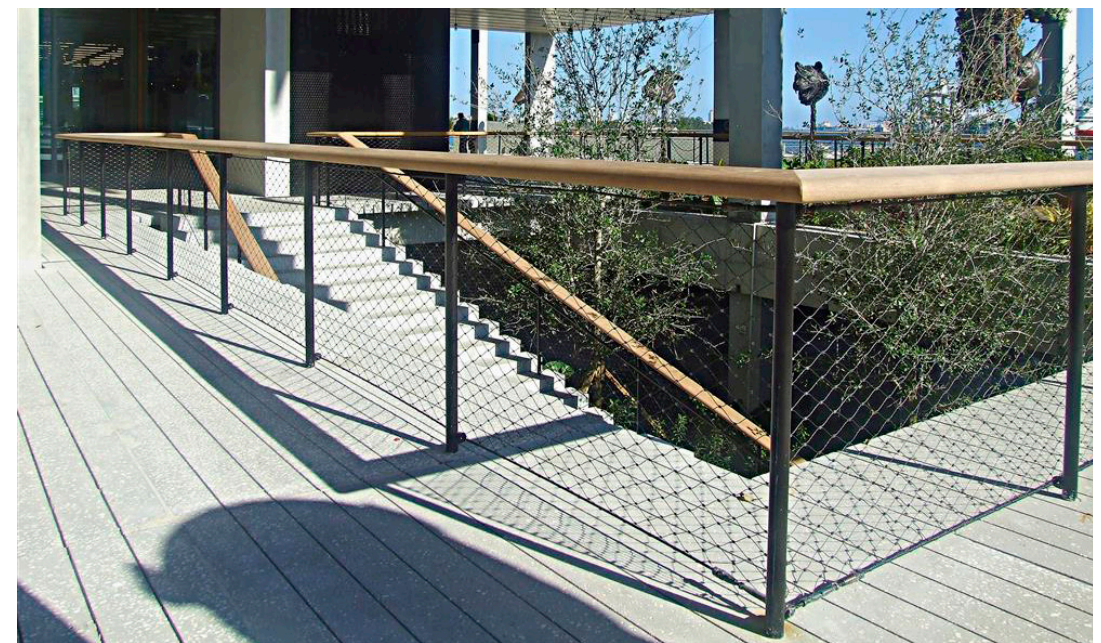


Western Red Cedar

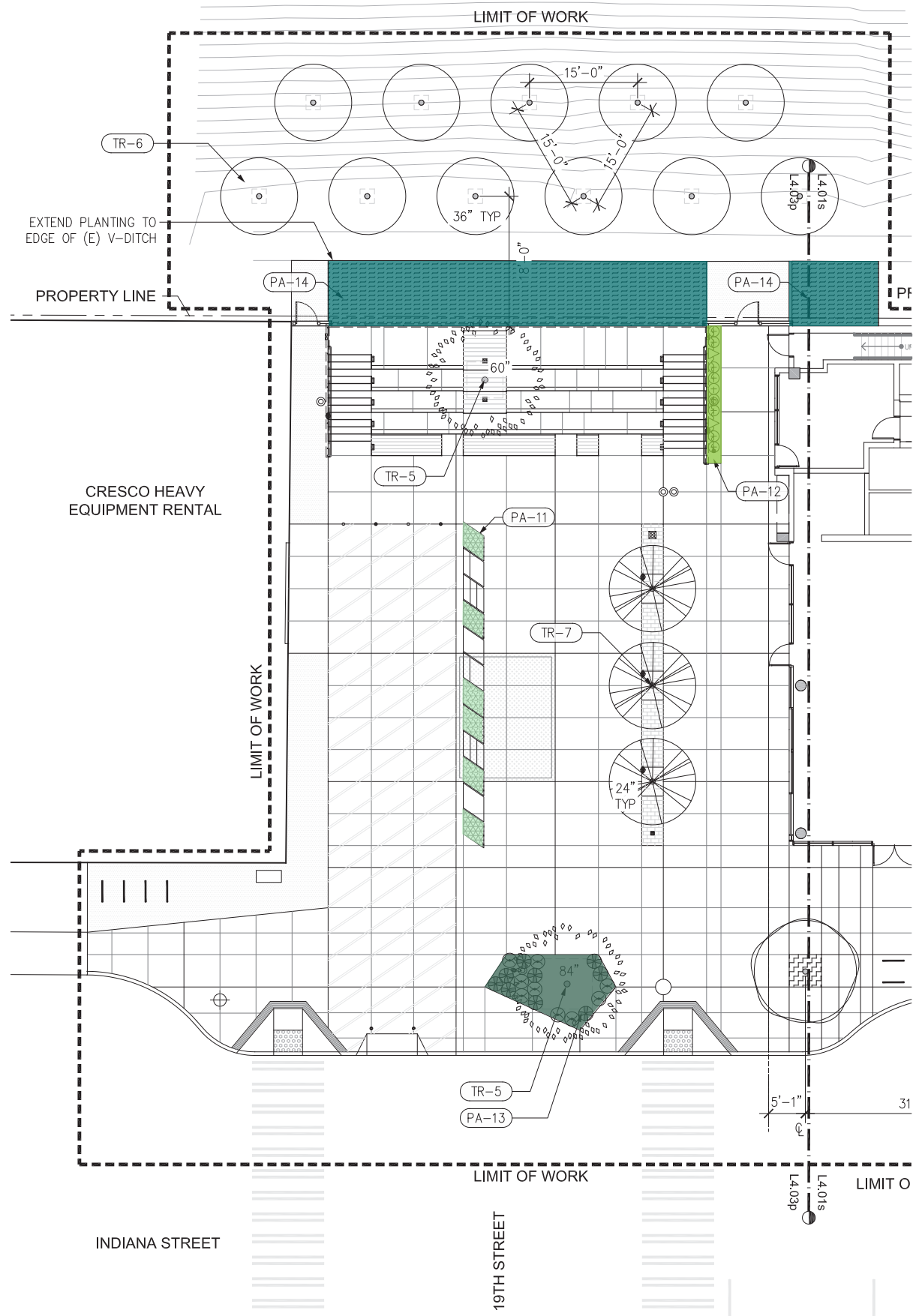
Weathered Steel



Cafe canopy tree: *Fraxinus angustifolia* 'Raywood' (Raywood Ash) is deciduous with great fall color. They grow to 35' tall in maturity and have an upright form and open canopy that will shade the south facade of the building in summer and provide a dappled canopy over the cafe zone.



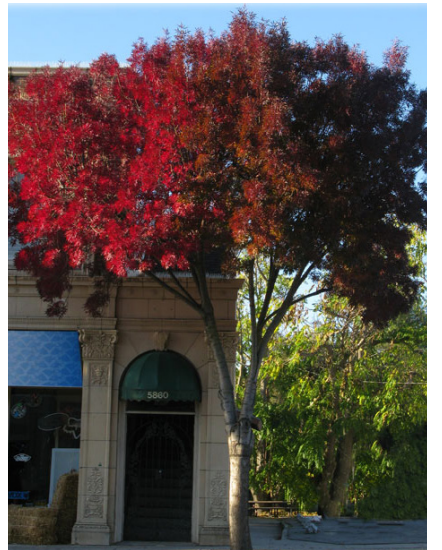
Bleacher guardrail-- wire mesh system, black powder coat and western red cedar top rail.



PLANTING SCHEDULE		
SYMBOL	TAG	LATIN NAME
TREES		
	TR-5	QUERCUS AGRIFOLIA
	TR-6	CUPRESSUS MACROCARPA
	TR-7	FRAXINUS ANGUSTIFOLIA 'RAYWOOD'
SHRUBS / GROUNDCOVERS / VINES		
	PA-11	MOBILE PLANTERS
		AEONIUM 'KIWI'
		EACHEVERIA 'AFTERGLOW'
		EACHEVERIA IMBRICATA
		SEDUM RUPESTRE 'LEMON CORAL'
		ALOE 'BLUE ELF'
		ALOE POLYPHYLLA
	PA-12	NORTH SIDE OF BLEACHER
		LONICERA HILDEBRANDIANA
		KNIPHOFIA 'SHINING SEPTRE'
	PA-13	STREET SIDE PLANTER
		BOUTELOUA GRACILIS 'BLONDE AMBITION'
		IRIS DOUGLASIANA
	PA-14	CALTRANS UNDERSTORY PLANTING
		AGAVE AMERICANA



*Cupressus macrocarpa*, Monterey Cypress



*Fraxinus angustifolia*, Raywood Ash



*Quercus agrifolia*, Coast Live Oak

# Planting Plan

PA-11- Mobile Planters



*Aeonium 'Kiwi'*  
Kiwi Aeonium



*Echeveria 'afterglow'*  
Afterglow Echeveria



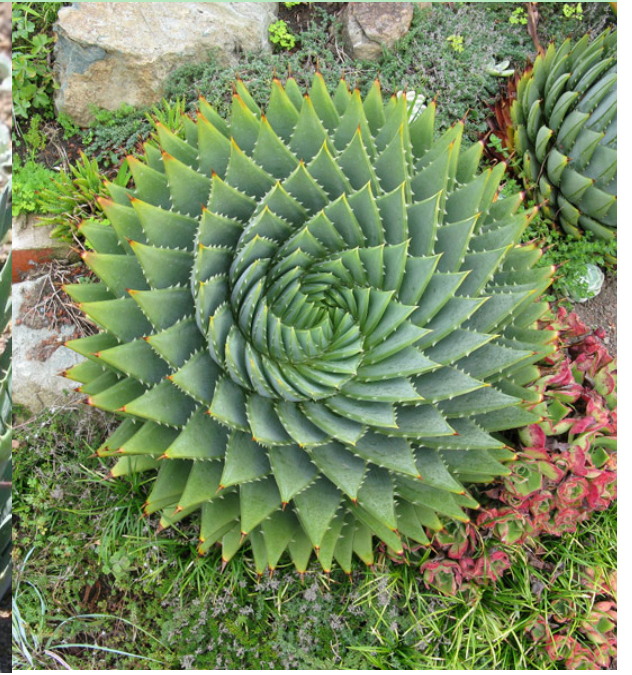
*Echeveria imbricata*  
Hens and Chicks



*Sedum rupestre 'lemon coral'*  
Lemon Coral Stonecrop



*Aloe 'Blue Elf'*  
Blue Elf Aloe



*Aloe polyphylla*  
Spiral Aloe

PA-12- Planting at North Side of Bleacher



*Lonicera hildebrandiana*  
Giant Burmese Honeysuckle

*Kniphofia 'Shining Septre'*  
Orange Hot Poker

PA-13- Street Side Planter



*Boutelou gracilis 'Blonde Ambition'*  
Blonde Ambition Blue Grama Grass

*Iris douglasiana*  
Douglas Iris

PA-14- Caltrans Planting



*Agave americana*  
American Aloe - Century Plant

# Q & A