

---

# FRANCISCO PARK - CHROME HEART

- Brief narrative description of the project\_\_\_\_\_page 2
- About the artist\_\_\_\_\_page 3
- Artist Resume\_\_\_\_\_page 3
- Location of Heart at Francisco Park\_\_\_\_\_page 6
- Rendering of Heart\_\_\_\_\_page 7
- Footing Detail\_\_\_\_\_page 8
- SF Rec and Park Letter\_\_\_\_\_page 9

---

## FRANCISCO PARK - CHROME HEART - NARRATIVE

The chrome heart sculpture is titled #heartinsf, it was created in 2015 by Laura Lineback as part of the Hearts in San Francisco program sponsored by the San Francisco General Hospital Foundation. The large, reflective, chrome mirror, in the form of a heart allows viewers to see themselves within the heart.

Hearts in San Francisco is an annual public art installation started in 2004 by the San Francisco General Hospital Foundation for the purpose of fundraising. The choice of hearts is inspired by the Tony Bennett song "I Left My Heart in San Francisco."

After the #heartinsf sculpture's initial installation it was purchased by a Francisco Park Conservancy board member who has offered to donate the sculpture to the Francisco Park Conservancy, which hopes to display it within Francisco Park. Francisco Park is a new 4.5 acre public park in the Russian Hill neighborhood located on the site of the city's first reservoir. The chrome heart will be installed adjacent to the ADA accessible path that winds its way up the steep topography of the site allowing it to be enjoyed by all visitors. The location is about halfway up the site which creates dynamic reflections of the new park, the city context around it and the view to Alcatraz and the Bay beyond. Locating this art piece within this public park will facilitate locals and visitors to reflect on themselves and on the unique urban and historic context that Francisco Park holds within the City of San Francisco.



**Artist:** LAURA LINEBACK

**Title/Date:** #heartinsf, 2015

**Material:** chromatic on fiberglass

San Francisco General Hospital Hearts in SF Foundation, San Francisco, CA

---

FRANCISCO PARK  
CHROME HEART

December 8, 2021



---

## LAURA LINEBACK

Laura is a Los Angeles based artist who uses humor in imagery and an unlimited range of materials, to call into question cultural beliefs and what we inherently regard as truth.

Conceptually, Lineback's work is based in projects and has developed to include subjects such as feminism, death, the body, humor, instinct and an overall criticism of social mores

## EDUCATION

**2021** MFA, Syracuse University, Syracuse, NY

**2016** Single Subject Teaching Credential in Art, California State University East Bay, Hayward, CA

**2011** BA with Distinction, Painting, San Francisco State University, San Francisco, CA

## TEACHING EXPERIENCE

**2021-Present** Art Mentor, TREE Academy, Los Angeles, CA

**2018-2021** Adjunct Instructor, Syracuse University, Syracuse, NY

**2018-2020** Instructional Assistant, Syracuse University, Syracuse, NY

**2016-2018** Art Teacher, Westmont High School, Campbell, CA

## EXHIBITIONS

**2021** *Carrying the Thick Present*, SU Art Museum, Syracuse, NY

**2020** *Fermented Stimuli*, The Bendix Building, Los Angeles, CA (Postponed COVID19)

**2020** *Just be a Lady*, Gallery 343, San Pedro, CA (Postponed COVID19)

**2019** *Activities*, Smith Hall, Syracuse, NY

**2019** *Similar Convergence*, Cornell University, Ithaca, NY

**2019** *The Artist Experience*, The Michael Sickler Gallery, Syracuse, NY

**2019** *ADAPT*, Mercantile Studios, Syracuse, NY

---

FRANCISCO PARK  
CHROME HEART

December 8, 2021

- 
- 2019** *Reality Check*, Dowling Art Center, Syracuse, NY
- 2019** *Off the Record*, Random Access, Syracuse, NY
- 2018** *An Anthology of Irreverence*, Smith Hall, Syracuse, NY
- 2018** *Poet Laura It*, The Michael Sickler Gallery, Syracuse, NY
- 2017** *Breasts. An Art Exhibit of Form and Function*, The Public Works, San Francisco, Ca
- 2015** *Profiled, Solo Show*, Pacific Coast Brewing Company, Oakland, Ca
- 2014** *Park Gym Mistletoe Artshow*, The Park Gym, San Francisco, Ca
- 2013** *Artists Fighting for Survival*, The Park Gym, San Francisco, Ca
- 2013** *Revamp a Chair for Charity*, Leftovers, San Francisco, Ca
- 2011** *Potluck Art Series*, Goforaloop Gallery, San Francisco, Ca
- 2011** *Special Student Showcase Art Collaborative Event*, 111 Minna Gallery, San Francisco, Ca
- 2011** *New Generations Student Showcase: Where to? The call of the times*, de Young Fine Arts Museum, San Francisco, Ca
- 2011** *Please Show ID*, Martin Wong Gallery, San Francisco, Ca
- 2010** *21st Annual Stillwell Exhibition*, San Francisco State University Fine Arts Gallery, San Francisco, Ca
- 2010** *Into The Woods*, Martin Wong Gallery, San Francisco, Ca
- 2009** *20th Annual Stillwell Exhibition*, San Francisco State University Fine Arts Gallery, San Francisco, Ca
- 2009** *Reassemblance*, Martin Wong Gallery, San Francisco, Ca
- 2009** *Art Party*, The Murray Compound, Fremont, Ca
- 2008** *ARTSHOW*, The Murray Compound, Fremont, Ca

---

FRANCISCO PARK  
CHROME HEART

December 8, 2021

---

## **PUBLIC ART COMMISSIONS**

**2016** *Love Wins*, acrylic on fiberglass heart, Tabletop Sculpture, San Francisco General Hospital Hearts in SF Foundation, San Francisco, CA

**2015** *#heartsinsf*, chromatic on fiberglass heart, Large Sculpture, San Francisco General Hospital Hearts in SF Foundation, San Francisco, CA

## **CURATION**

**2020** *Tending a Secret* with Soft Core LA, River Gallery, Los Angeles, CA (Postponed COVID19)

**2019** *All at Once* with Ann Moody, Random Access, Syracuse, NY

## **RESIDENCIES**

**2020** LA Turner Semester, Los Angeles, CA

**2017** JSS in Civita, Civita Castellana, Italy

## **PUBLICATIONS & PRESENTATIONS**

- Perception Magazine, Art featured on the back cover, Dec 2018
- "13 Artists Share tips on loosening up your art" Tara Leaver's Blog, June 2018
- "Big 'Breasts' Art Show Set to Reveal Itself" SF Weekly Article, Mar 2017
- "Heart art includes gay artist, LGBT themes" interviewed for The Bay Area Reporter, Feb 2016
- "Valentine Date: A sweet 'heart' walking tour of San Francisco's heart sculptures", article in the Mercury News, Feb 2015
- "Art With Heart Returns to San Francisco" article for 7x7 Magazine, Dec 2014
- Hearts in San Francisco Press Release, San Francisco General Hospital Foundation, Dec 2014
- Chicago vs. San Francisco, Artist Portfolio Magazine, Apr 2014
- Interviewed for Stephanie Ann May's Blog, Mar 2011

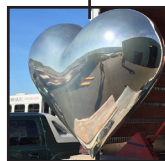
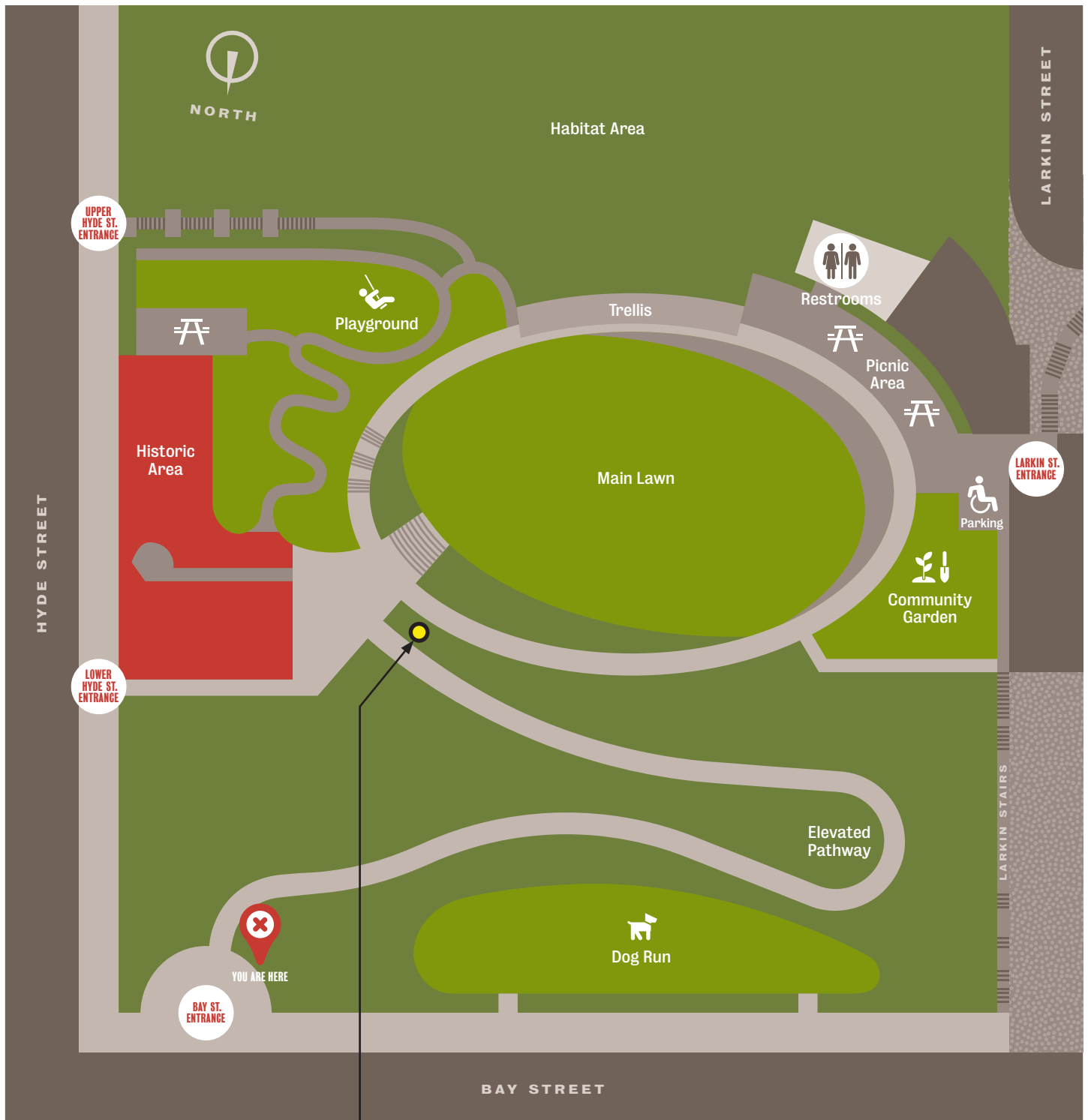
From artist's website (<https://www.lauralineback.com/>)

---

FRANCISCO PARK  
CHROME HEART

December 8, 2021

# FRANCISCO PARK - HEART LOCATION



CHROME HEART. LOCATED IN A PLANTED AREA IN LINE WITH THE HISTORIC RESERVOIR WALL MARKER BETWEEN ADA ACCESSIBLE PATHWAYS.

FRANCISCO PARK  
CHROME HEART

December 8, 2021





FRANCISCO PARK - RENDERING - VIEW LOOKING EAST

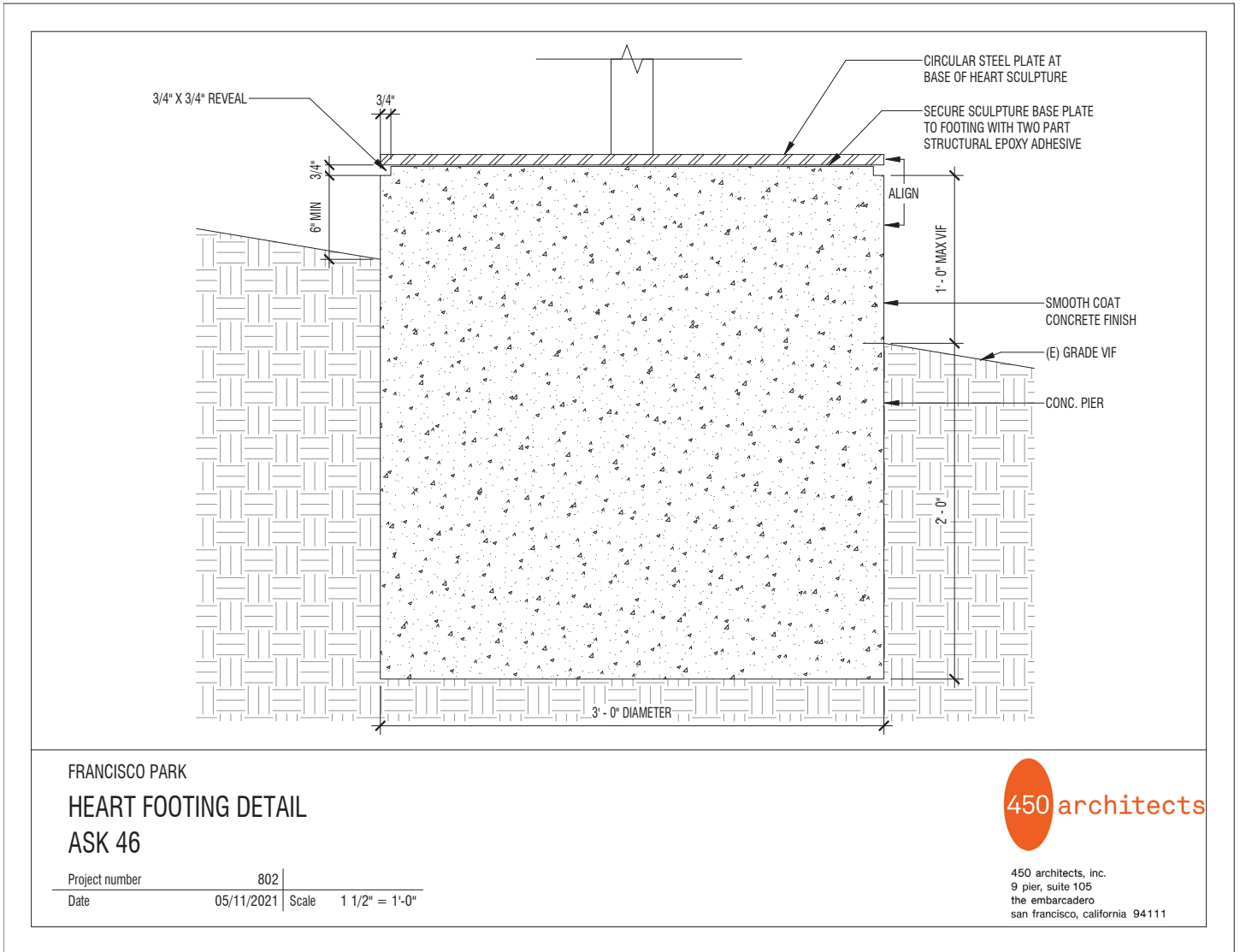


FRANCISCO PARK  
CHROME HEART

December 8, 2021



# FRANCISCO PARK - FOOTING DETAIL



FRANCISCO PARK  
CHROME HEART

December 8, 2021







London N. Breed, Mayor  
Philip A. Ginsburg, General Manager

December 8, 2021

Ms. Suzie Ferras  
Chair, Visual Arts Committee  
San Francisco Arts Commission  
40 South Van Ness Avenue, Suite 325  
San Francisco, CA 94102

Dear Ms. Ferras,

On behalf of the Recreation and Park Department, I write in support of the installation of the 2015 Laura Lineback Heart sculpture in Francisco Park. We believe that the sculpture will add an additional point of interest in this brand new park that will open to the public in 2022.

Further, hearts have played a key role in the extraordinary work of the Francisco Park Conservancy, which has raised more than \$27 million in private funds to design and build the park and support park maintenance. FPC has used the theme: "Leave Your Heart – Francisco Park" to inspire support for the project.

The 4.5-acre park on a hillside in the Russian Hill neighborhood will be San Francisco's the largest new public park in decades and is expected to draw visitors from near and far to enjoy the peace of a new urban greenspace and the wonder of the park's sweeping views.

The FPC will maintain the sculpture for the period of its installation and comply with the other terms of the permit issued by the Department.

We look forward to the opening of this wonderful new park and providing the public the opportunity to view the Heart.

Sincerely,

DocuSigned by:

*Lisa Bransten*

1448F3AEB9E648C...  
LISA BRANSTEN

Director of Partnerships