

Golden Gate Park 9th and Lincoln Gateway Improvements

Concept Design - February 2020



SF Recreation and Parks Strategic Plan:

Strategy 1—Inspire Public Space:

Keep today's parks safe, clean, and fun; promote our parks' historic and cultural heritage; and build the great parks of tomorrow

Objective 1.2: Strengthen the quality of existing Parks & Facilities

Objective 1.3: Steward and promote good park behavior

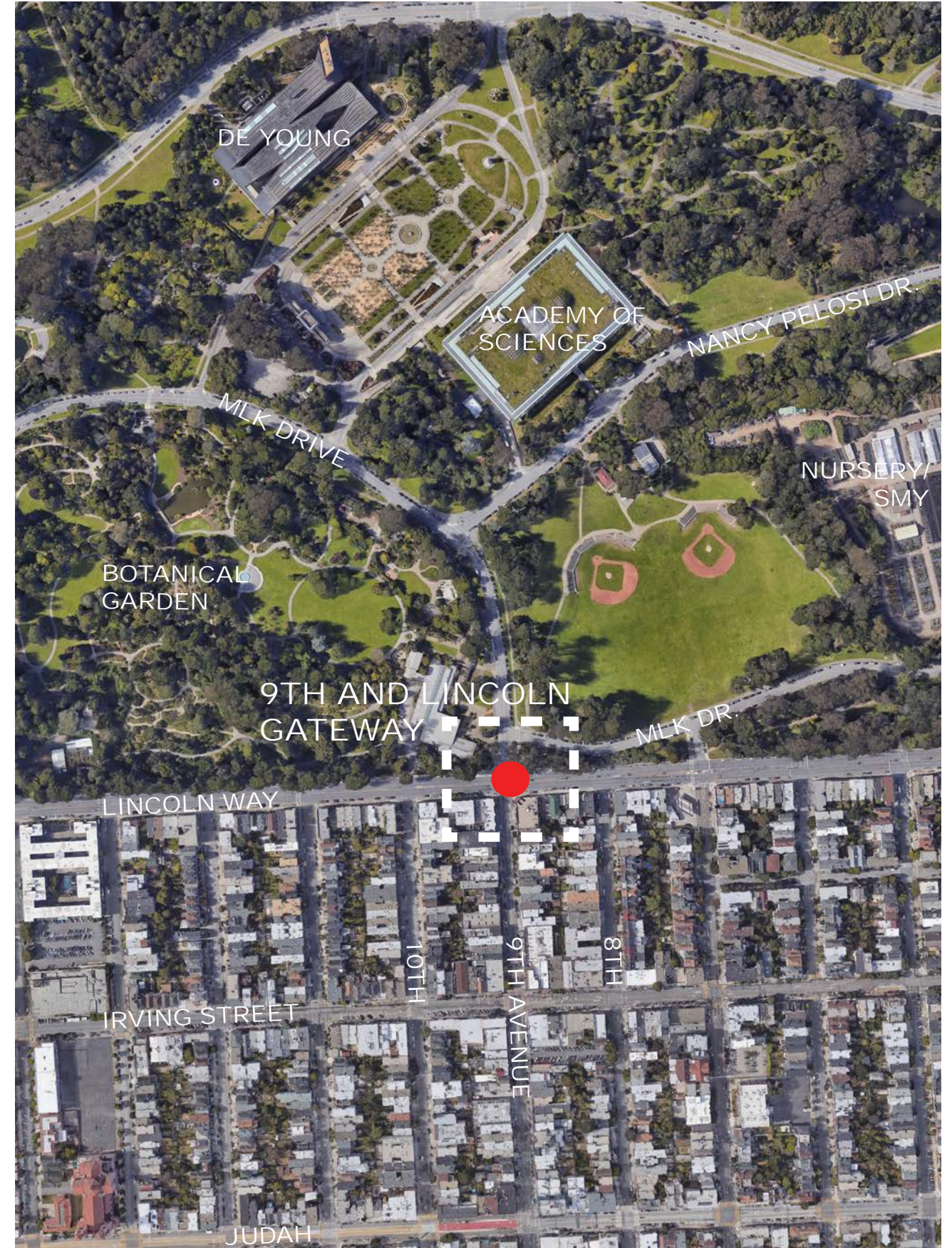
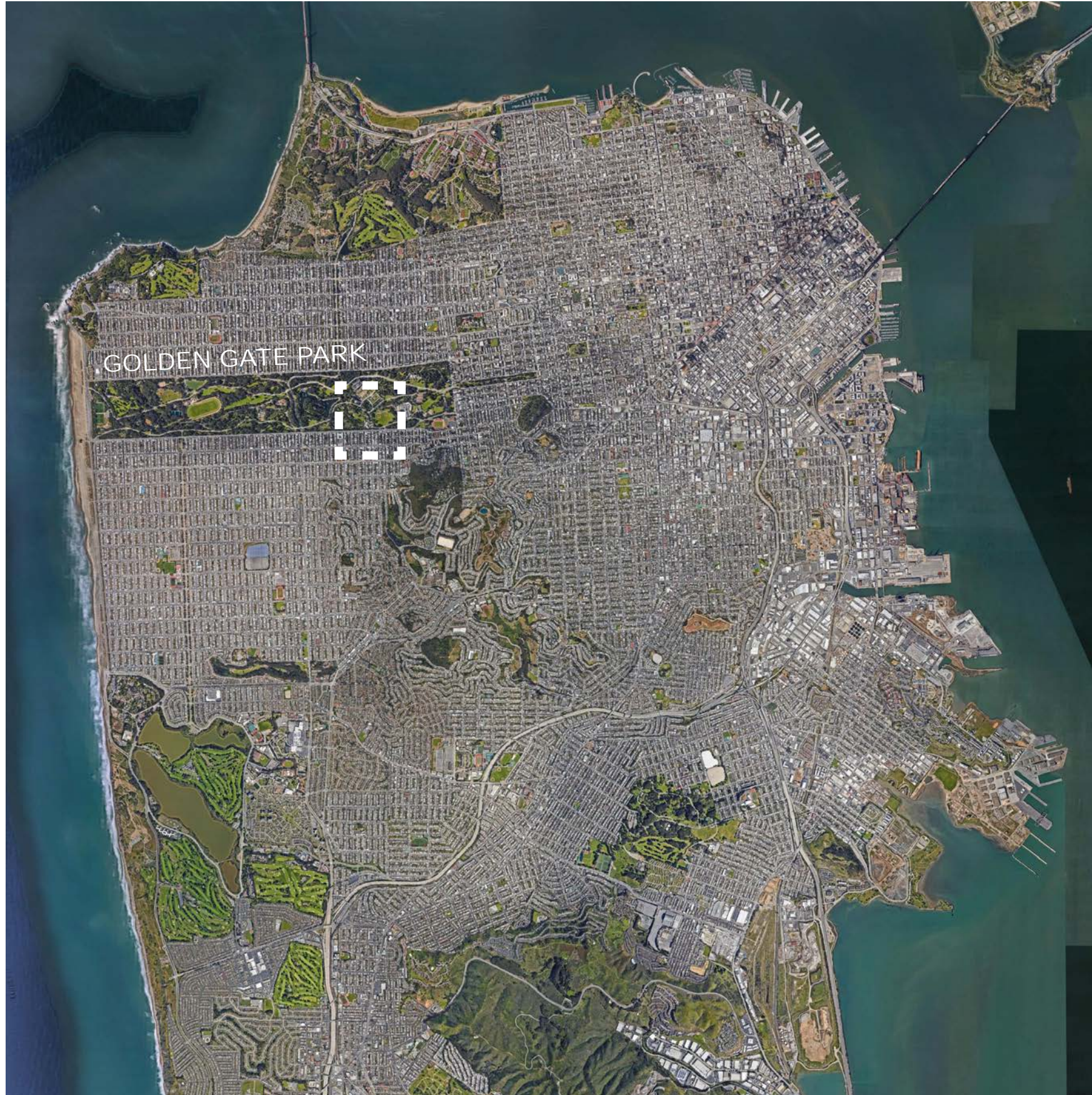
Objective 1.4: Preserve and celebrate historic and cultural resources

Strategy 4—Inspire Stewardship:

Protect and enhance San Francisco's precious natural resources through conservation, education, and sustainable land/facility management practices

Objective 4.3: Increase eco-literacy of park users and park maintenance staff

Context

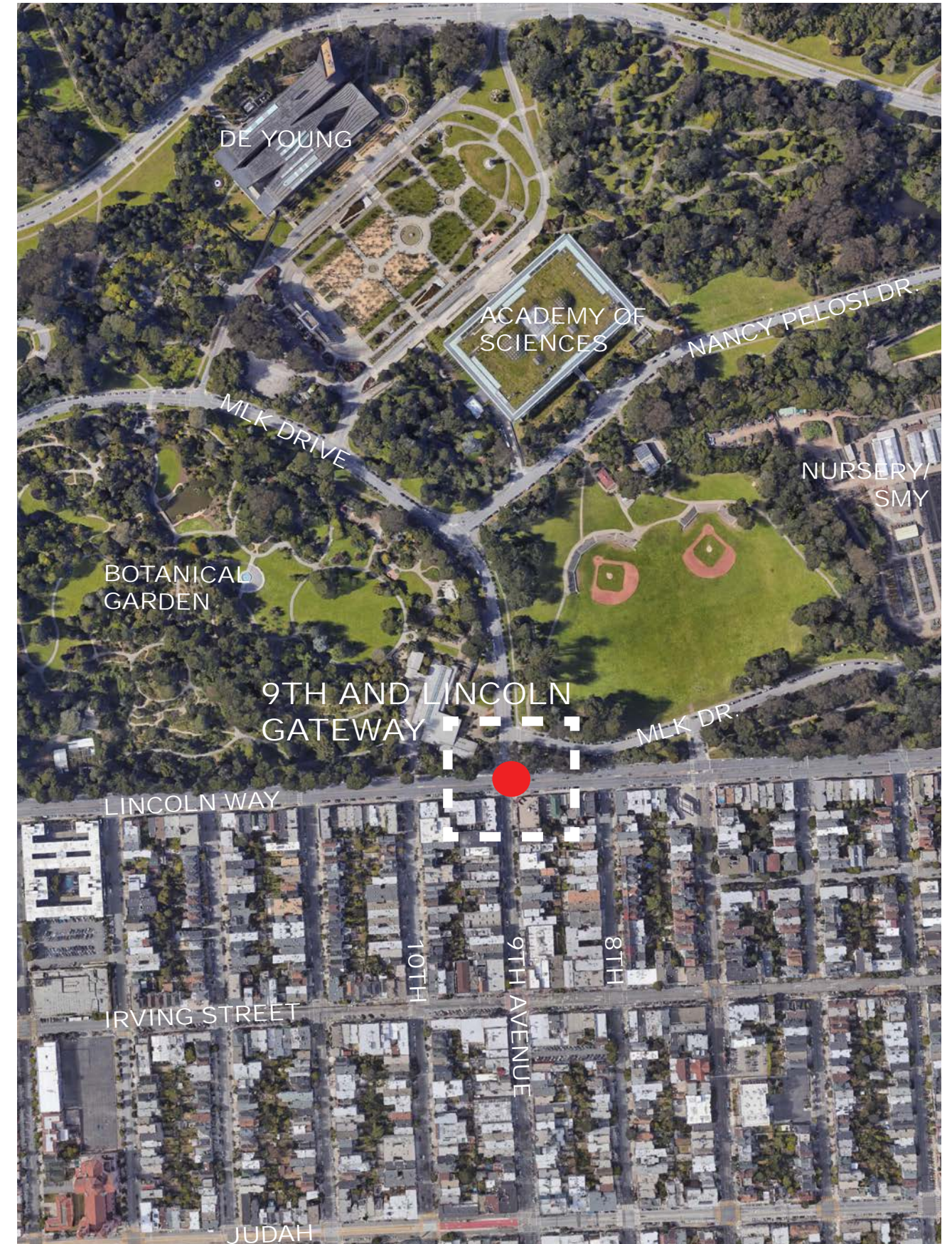


Golden Gate Park 9th and Lincoln Gateway Improvements

February 2020

Project Goals

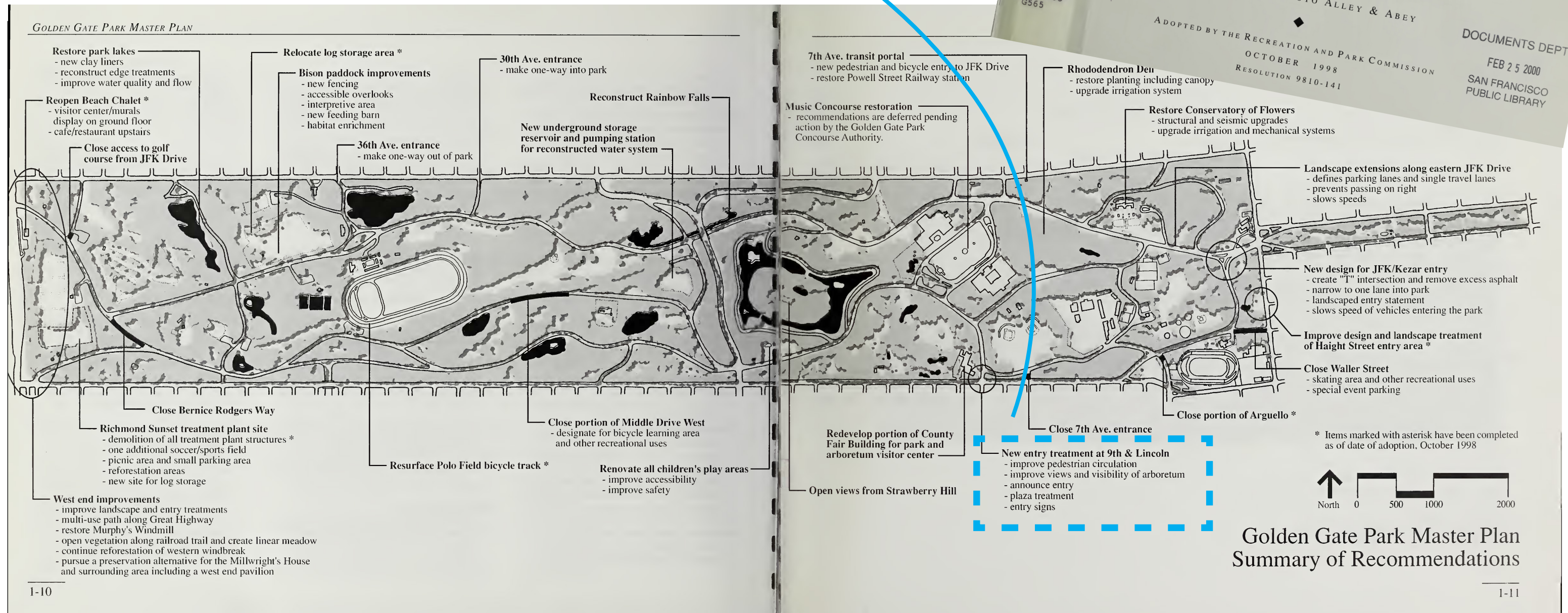
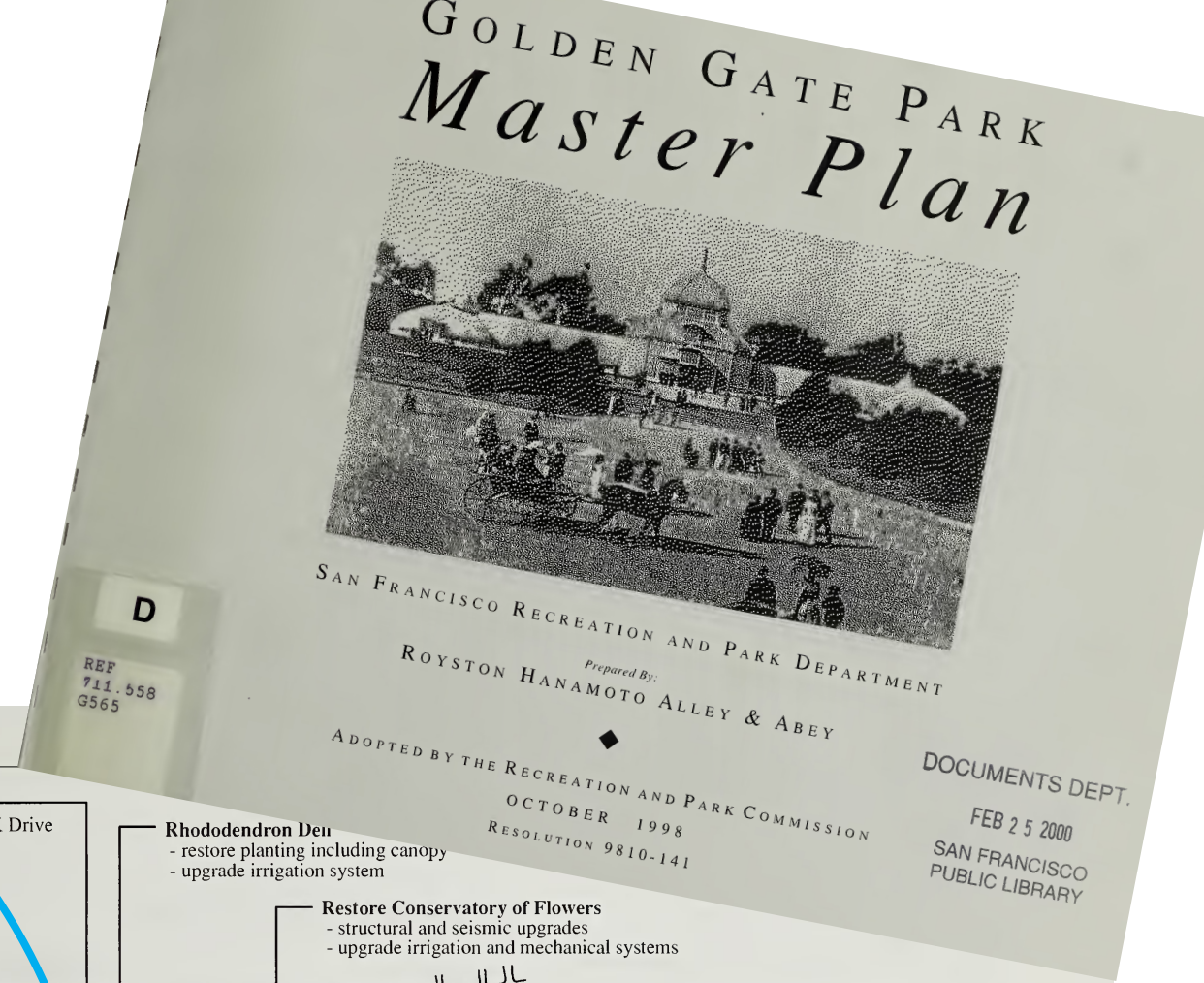
- Meet the Golden Gate Park Master Plan recommendations
- Increase pedestrian safety and provide an iconic welcome into the park
- Help orient visitors to the park with entry signs and improved wayfinding
- Strengthen the connection to the Inner Sunset neighborhood
- Reflect durable and sustainable design that will last for many years
- Gain the support of community and merchant groups



Golden Gate Park Master Plan, 1998:

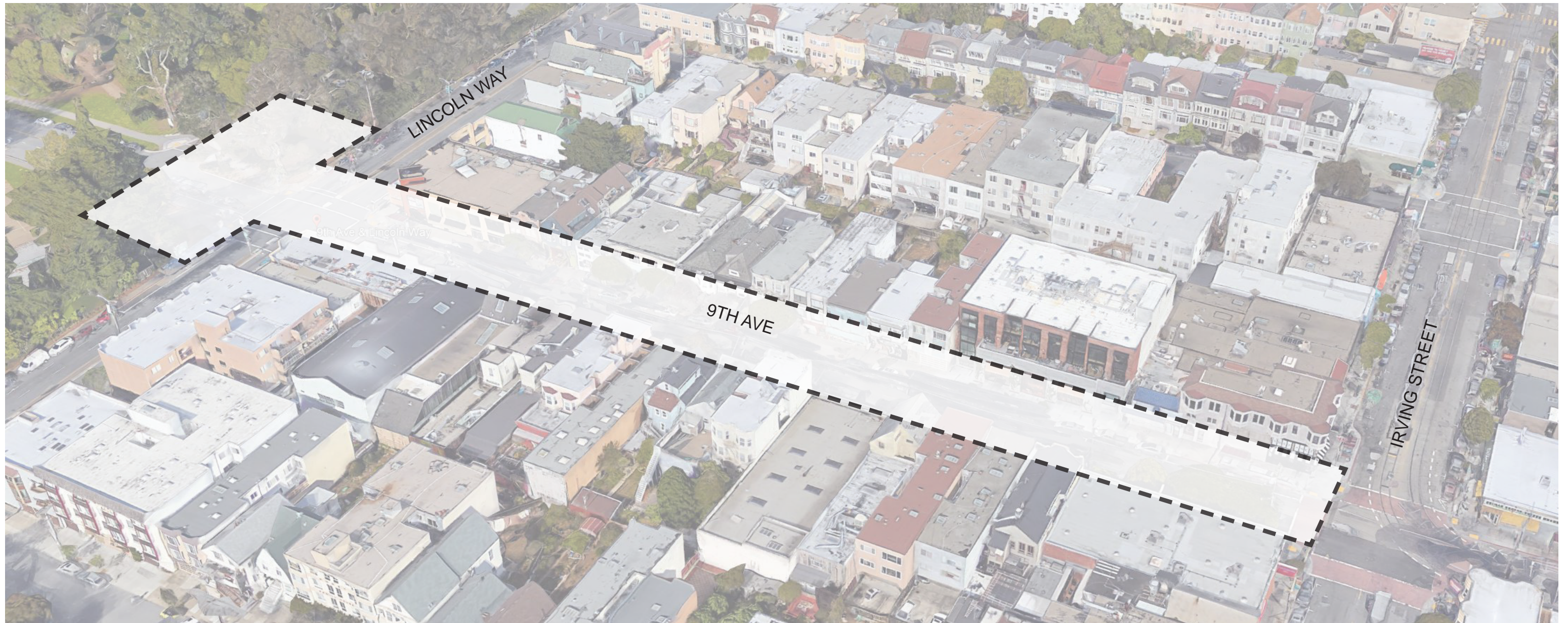
“ New entry treatment at 9th & Lincoln ”

- Improve pedestrian circulation
- improve views and visibility of arboretum
- announce entry
- plaza treatment
- entry signs



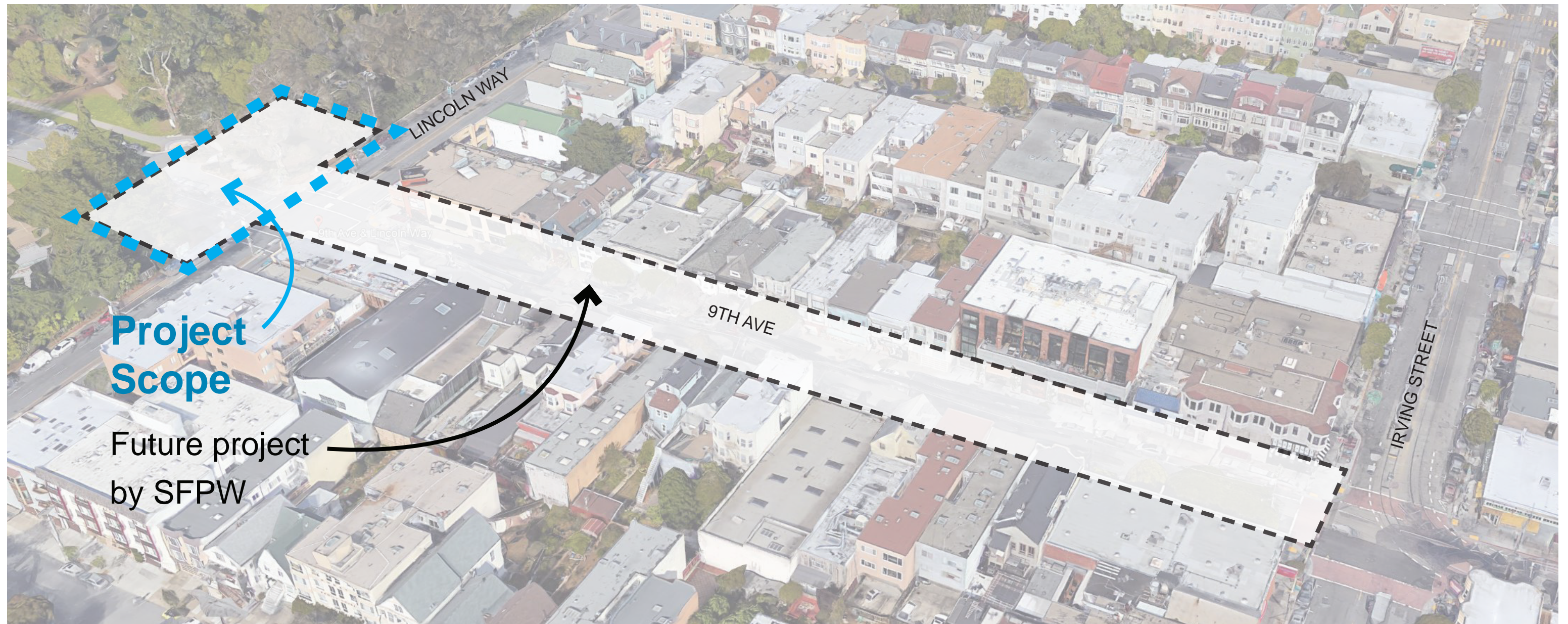
Project History

- Early 2000s: Concepts developed by SFPW
- 2016-2018: SFPW & SFRPD joint project development
 - 06/06/2018: Community Meeting #1
 - 11/14/2018: Community Meeting #2 - Preferred Concept



Project History

- Early 2000s: Concepts developed by SFPW
- 2016-2018: SFPW & SFRPD joint project development
 - 06/06/2018: Community Meeting #1
 - 11/14/2018: Community Meeting #2 - Preferred Concept
- **Today:** SFRPD to push forward Gateway scope



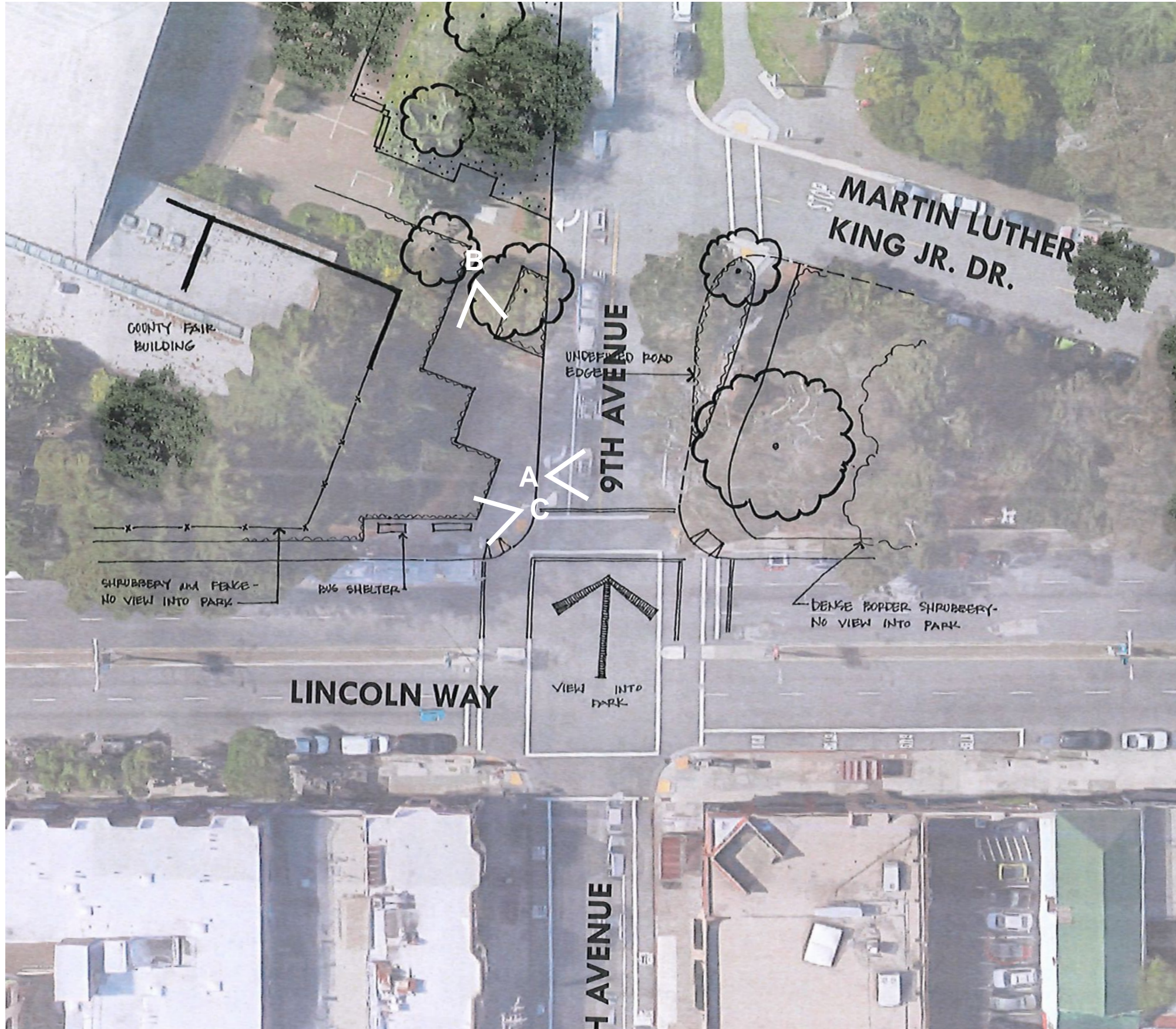
Existing Conditions



Golden Gate Park 9th and Lincoln Gateway Improvements

February 2020

Existing Conditions



A. LOOKING EAST



B. WEST SIDE LOOKING SOUTH



C. WEST SIDE TRANSIT AMENITIES



Concept Plan



LEGEND

- 1 CONCRETE PAVING W/ EXPOSED AGGREGATE FINISH
- 2 NEW PLANTING
- 3 LOW MOUND WITH PLANTING
- 4 ENGRAVED BOULDER W/ "GOLDEN GATE PARK"
- 5 STONE MASONRY WALL
- 6 STONE MASONRY PLANTER WALL
- 7 GRANITE STEPS
- 8 10' WIDE CONCRETE PATH
- 9 RELOCATED BUS SHELTER
- 10 POTENTIAL SIDEWALK WIDENING
- 11 EXISTING PEDESTRIAN LIGHT
- 12 STANDARD WAYFINDING MAP
- 13 SPECIMEN TREE
- 14 PEDESTRIAN LIGHT TO MATCH EXISTING
- 15 CONTINENTAL CROSSWALK

Materials Palette



ENGRAVED BOULDER



BOULDER CHEEK WALL DETAIL



CONCRETE PAVING



GRANITE STEPS W/ BOULDERS



STONE MASONRY PLANTER WALL



STANDARD WAYFINDING MAP



PEDESTRIAN LIGHTS

PLANTING: NATIVE GARDEN AND CLIMATE ADAPTIVE



GREVILLEA 'HONEY GEM'



LEUCADENDRON 'SAFARI SUNSET'



LOROPETALUM SP.



MAGNOLIA SOULANGIANA



PRUNUS YOSHINO



CYATHEA BROWNII



IRIS DOUGLASIANA



RIBES SANGUINEUM



CEANOTHUS SP.



QUERCUS AGRIFOLIA



ARCTOSTAPHYLOS UVA-URSI



HEUCHERA ROSADA



MUHLENBERGIA RIGENS



ZAUSCHNERIA CALIFORNICA

Perspective Looking Northwest



Golden Gate Park 9th and Lincoln Gateway Improvements

February 2020

Perspective Looking Northeast



Golden Gate Park 9th and Lincoln Gateway Improvements:

- Meets the Golden Gate Park Master Plan recommendations
- Increases pedestrian safety and provides an iconic welcome into the park
- Helps orient visitors to the park with entry signs and improved wayfinding
- Strengthens the connection to the Inner Sunset neighborhood
- Reflects durable and sustainable design that will last for years
- Has the support of community and merchant groups:

Inner Sunset Park Neighbors, Inner Sunset Merchants Association

Thank You!

