



# GOLDEN GATE PARK TENNIS CENTER

Schematic Design Presentation  
July 17, 2017



*The Tennis Coalition promotes San Francisco's advantage for year-round public tennis by spearheading the renovation of the historic Golden Gate Park Tennis Center and strengthening San Francisco's tennis community.*

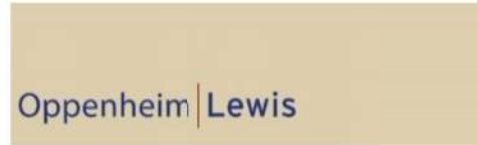
Architect:



Contractor:

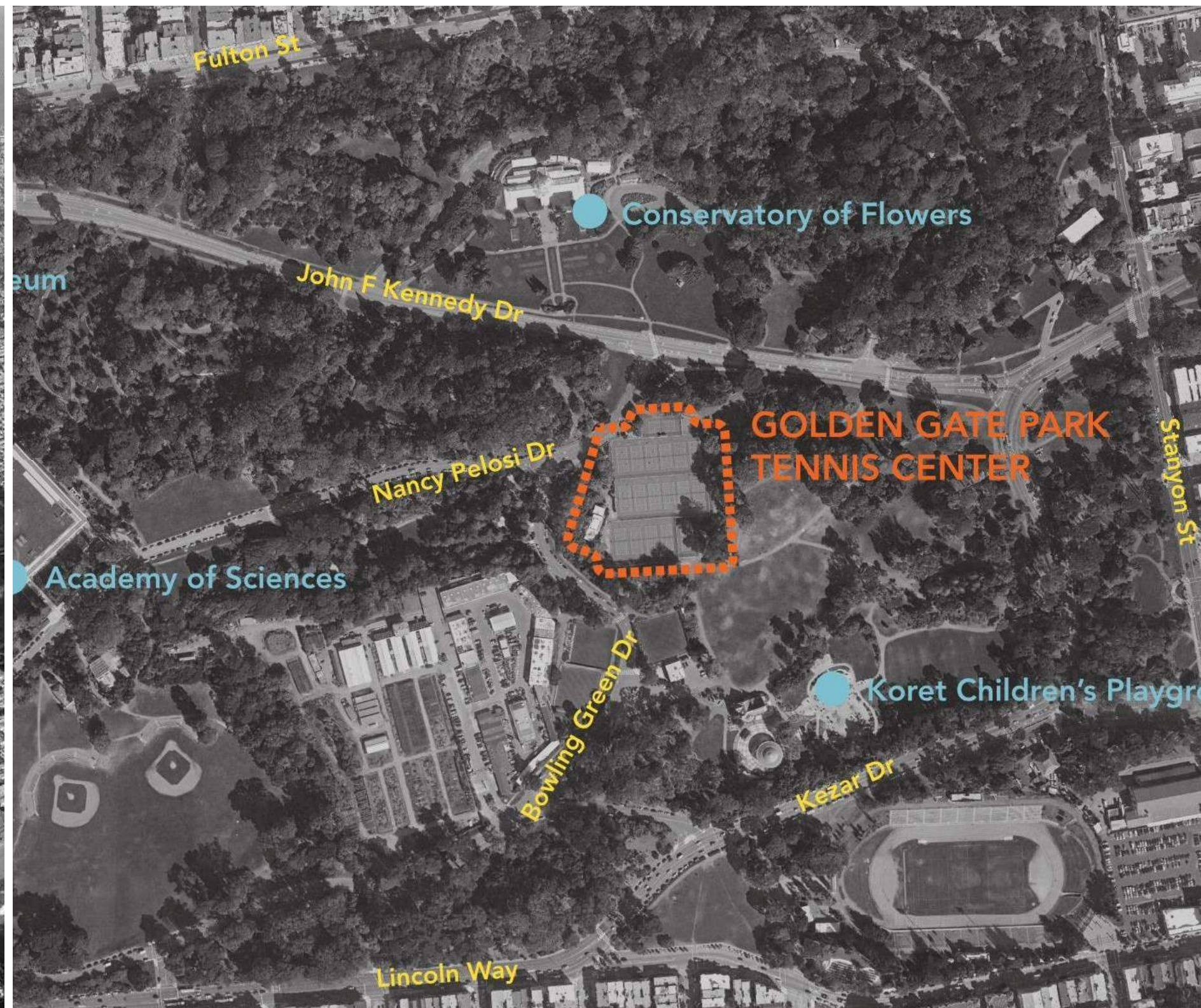
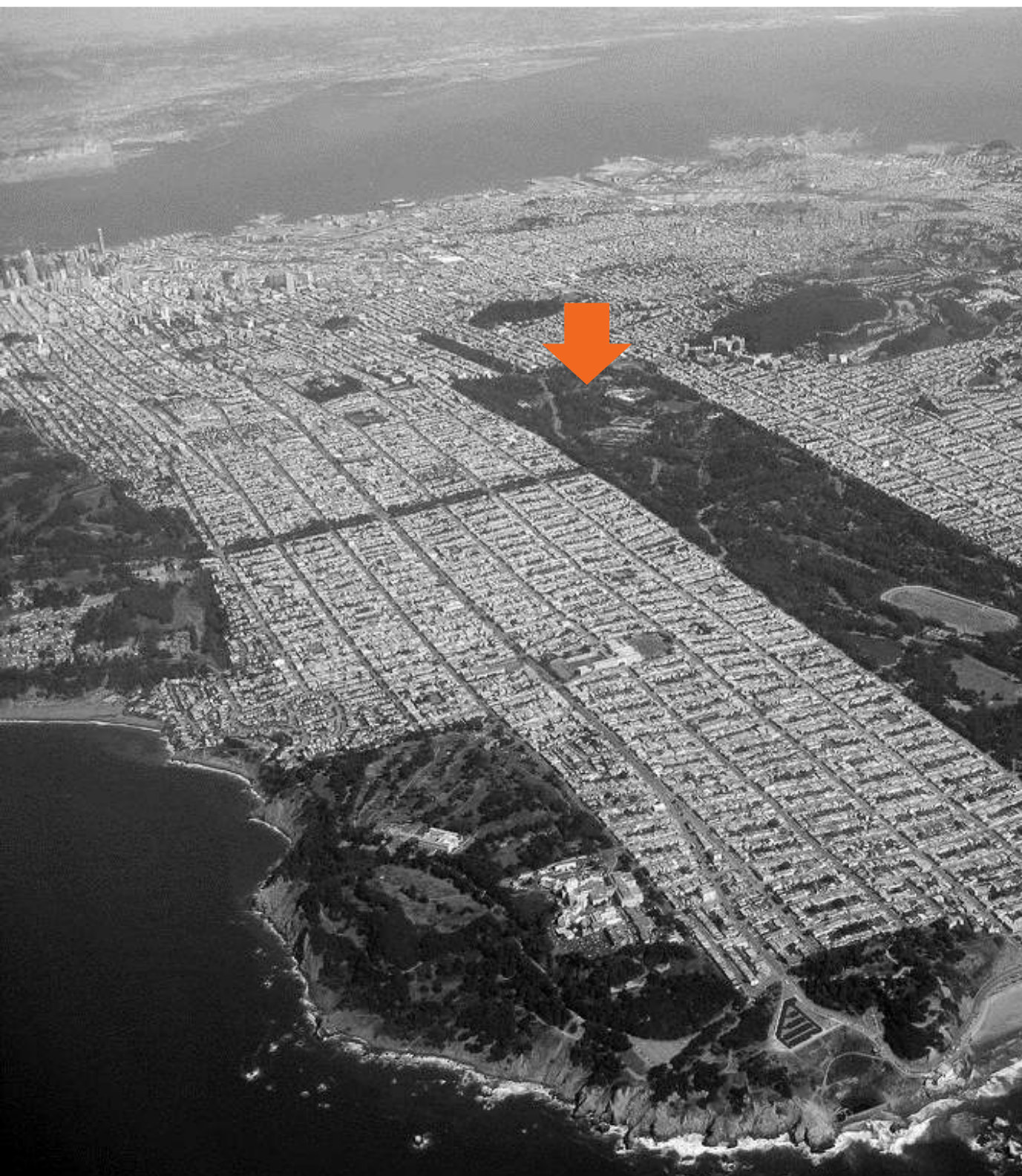


Consultants:



commissioning

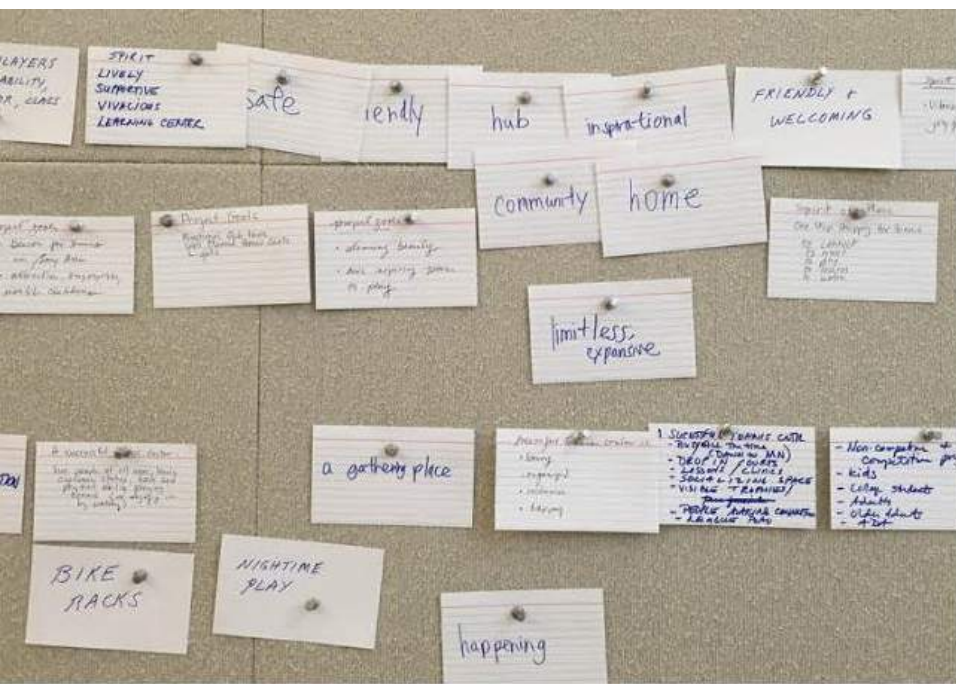
the team



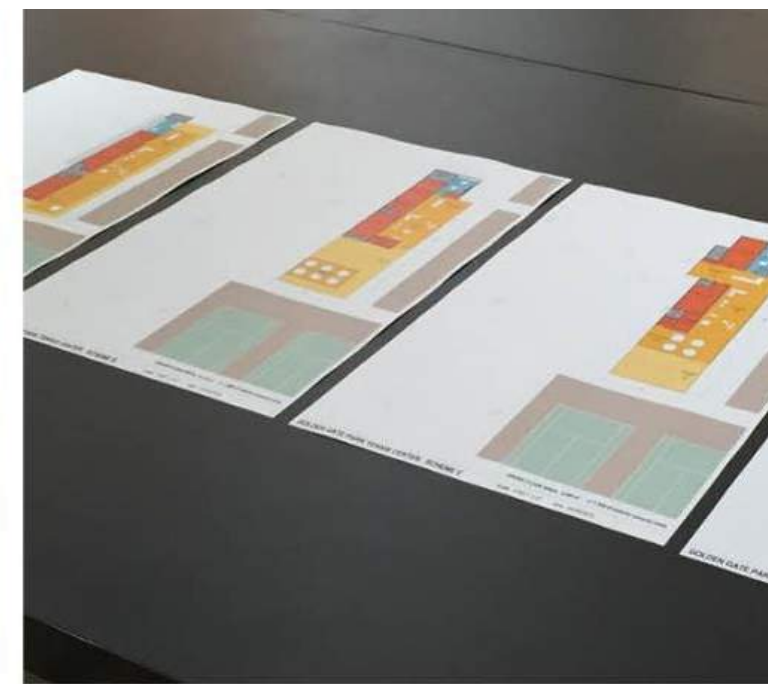
site location: the center of San Francisco

- A world class public tennis facility.
- A vibrant, inclusive hub of San Francisco tennis that's open to all ages and abilities.
- A place that builds community and supports youth development through the game of tennis.
- A flexible center that supports expanded tennis programming and a variety of events.
- A sustainable center that promotes healthy living on a healthy planet.

project goals



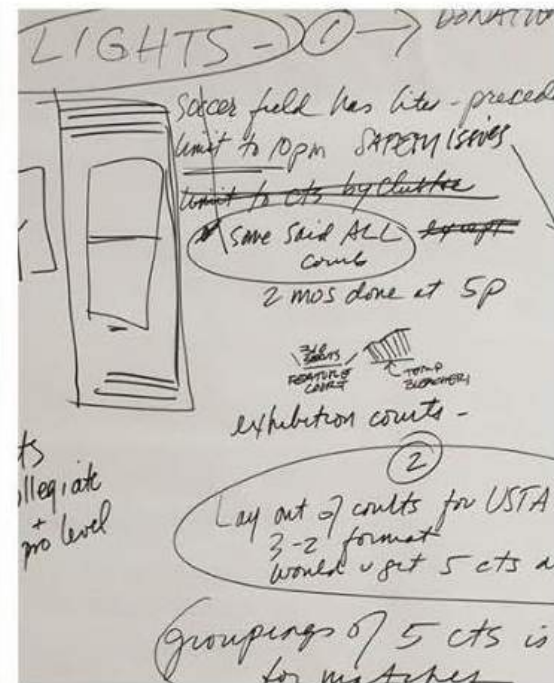
TENNIS COALITION OF SF BOARD MEETING - 02/09/16



TCSF & RPD MEETINGS



COMMUNITY MEETING #1 - 02/24/16



COMMUNITY MEETING #2 - 03/10/16



COMMUNITY MEETING #3 - 11/16/16

community engagement

“Can’t wait! We want a tennis center that’s the hub for the City!”

“Let’s build for the youth of tomorrow.”

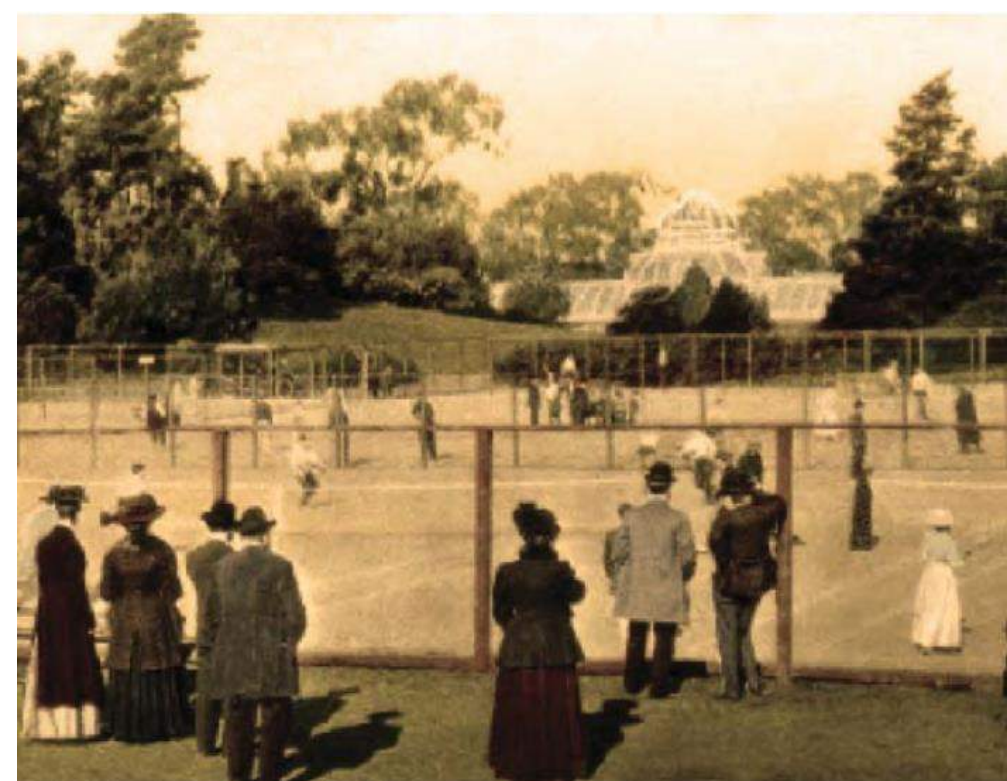
“Important the tennis center feel open, friendly, and community scale.”

“Being able to sit, snack and watch my teammates from close by without distracting them.”

“Lights will be critical – the only meaningful way to increase access to public tennis courts in SF.”

“A high quality tennis lesson program run by world class instructors for youth and adults.”

feedback



the existing facilities & a long history of tennis on the site



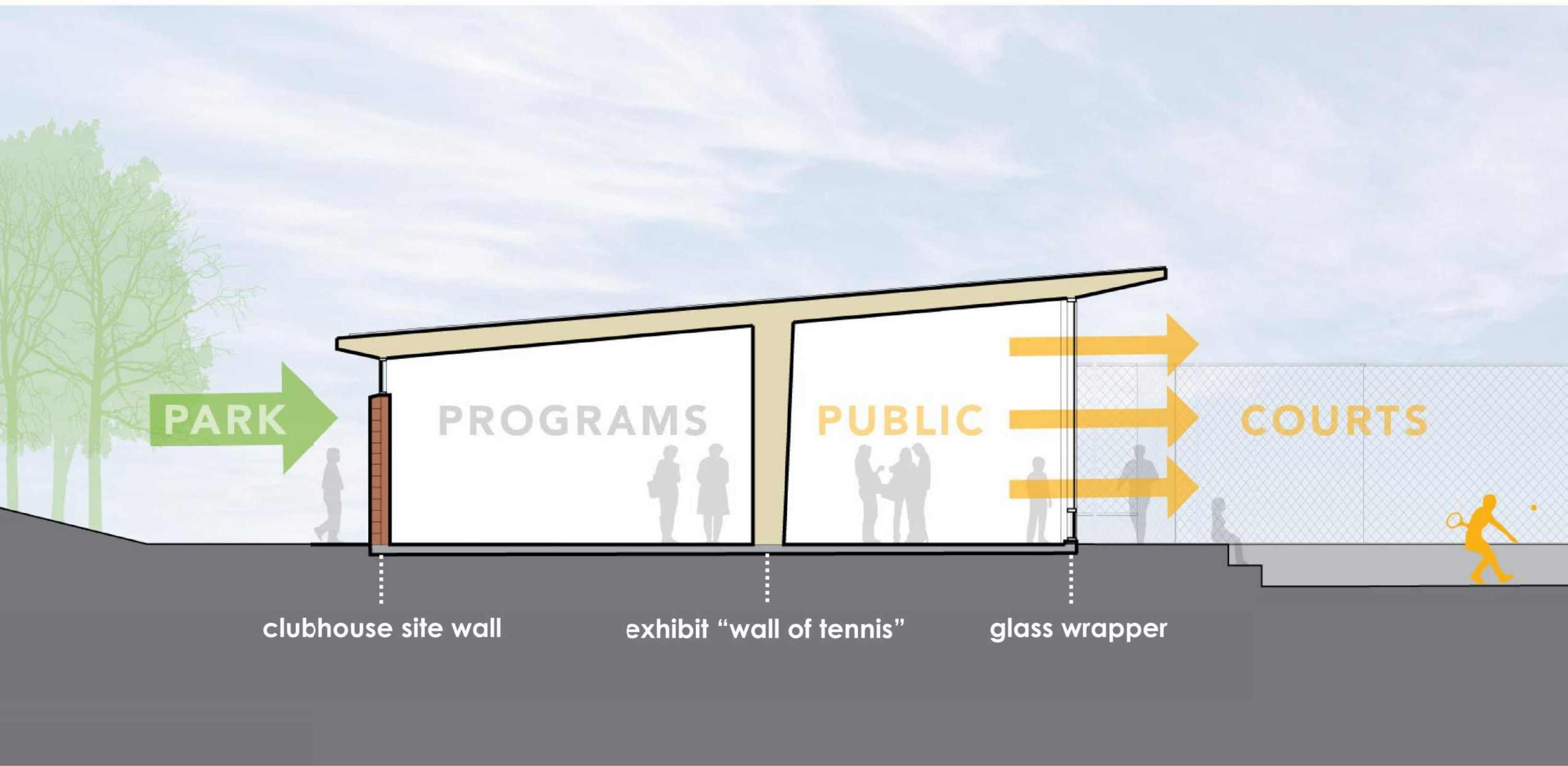
existing

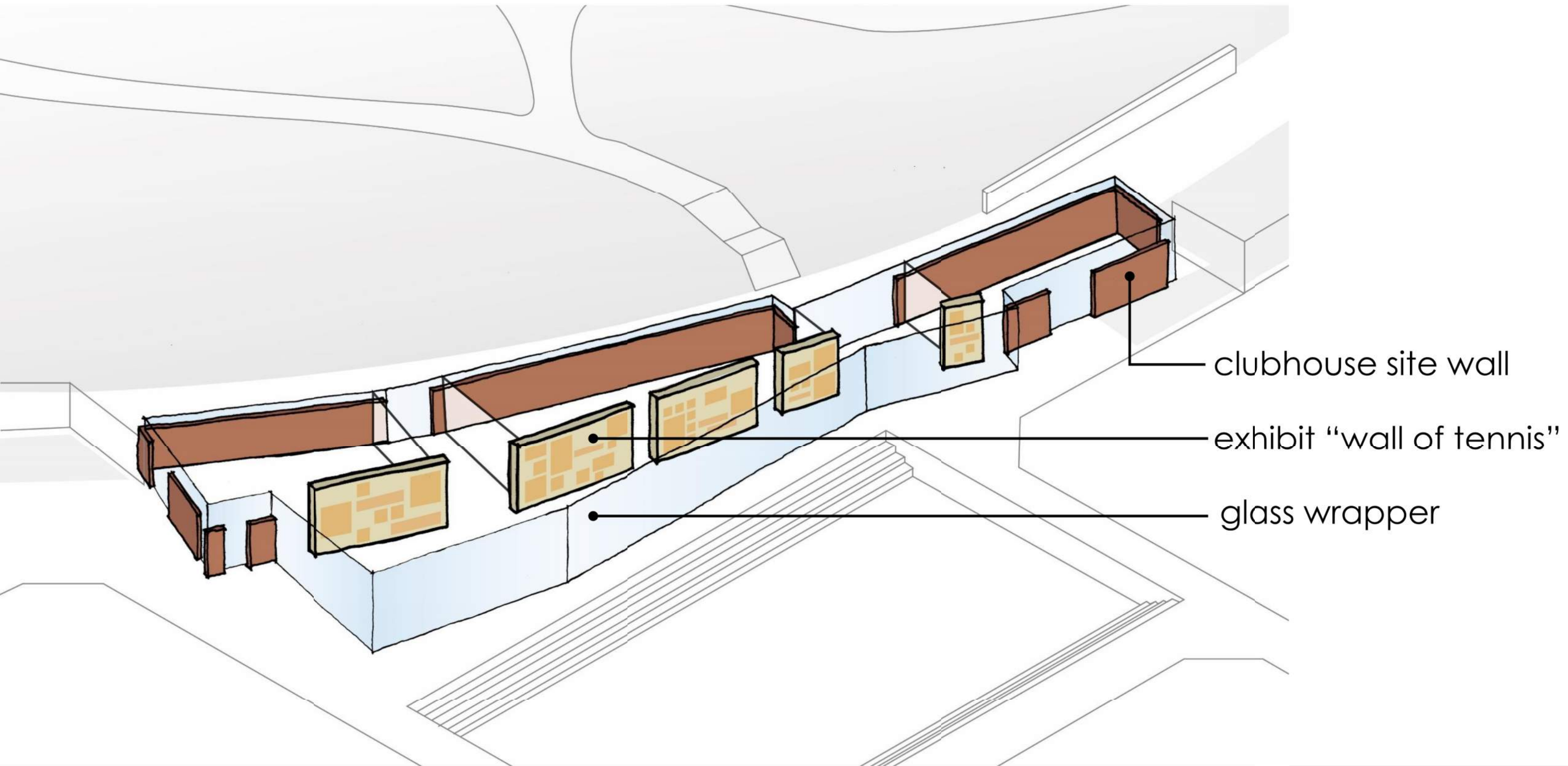


proposed

site plan







clubhouse site wall

exhibit "wall of tennis"

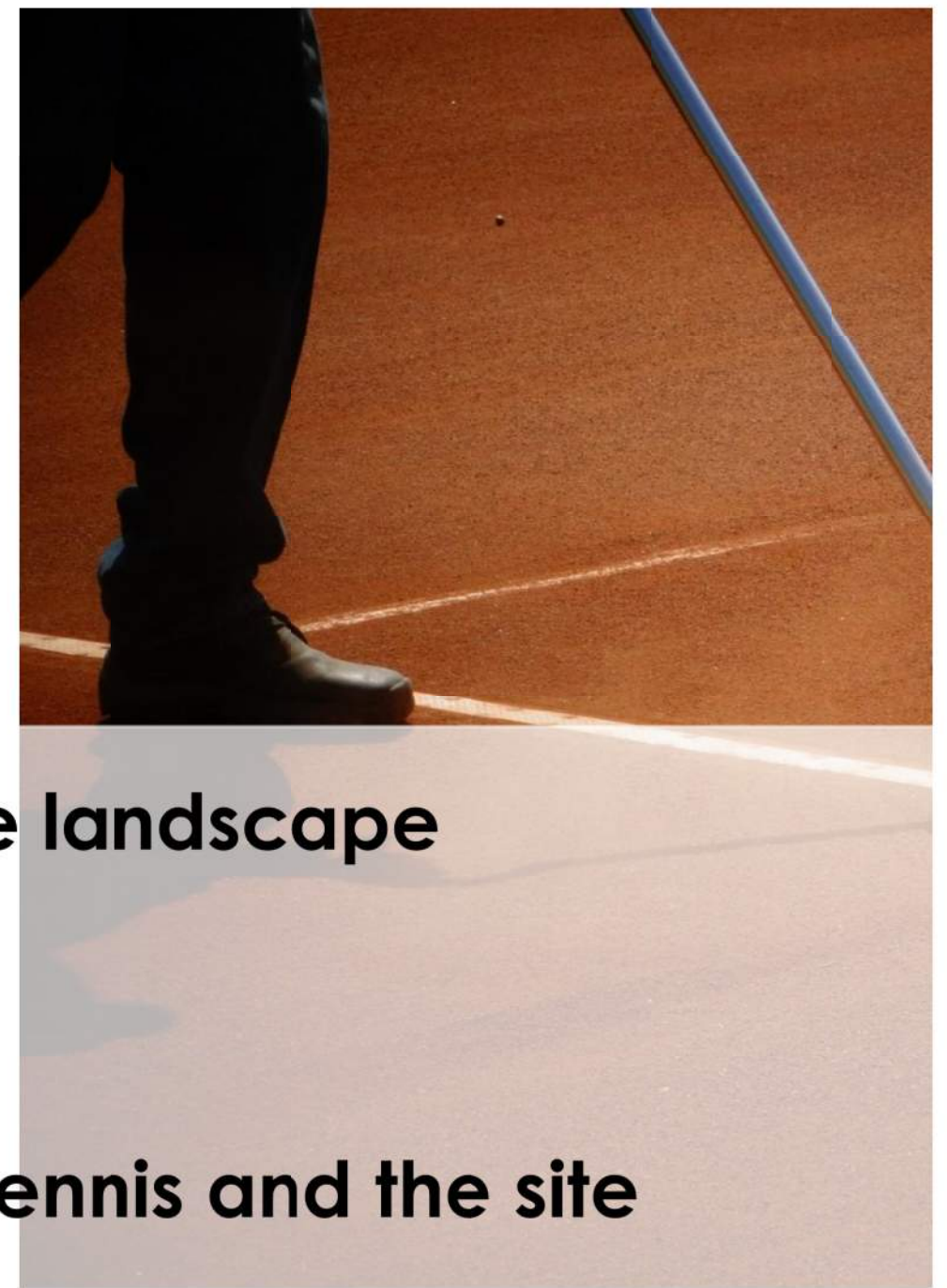
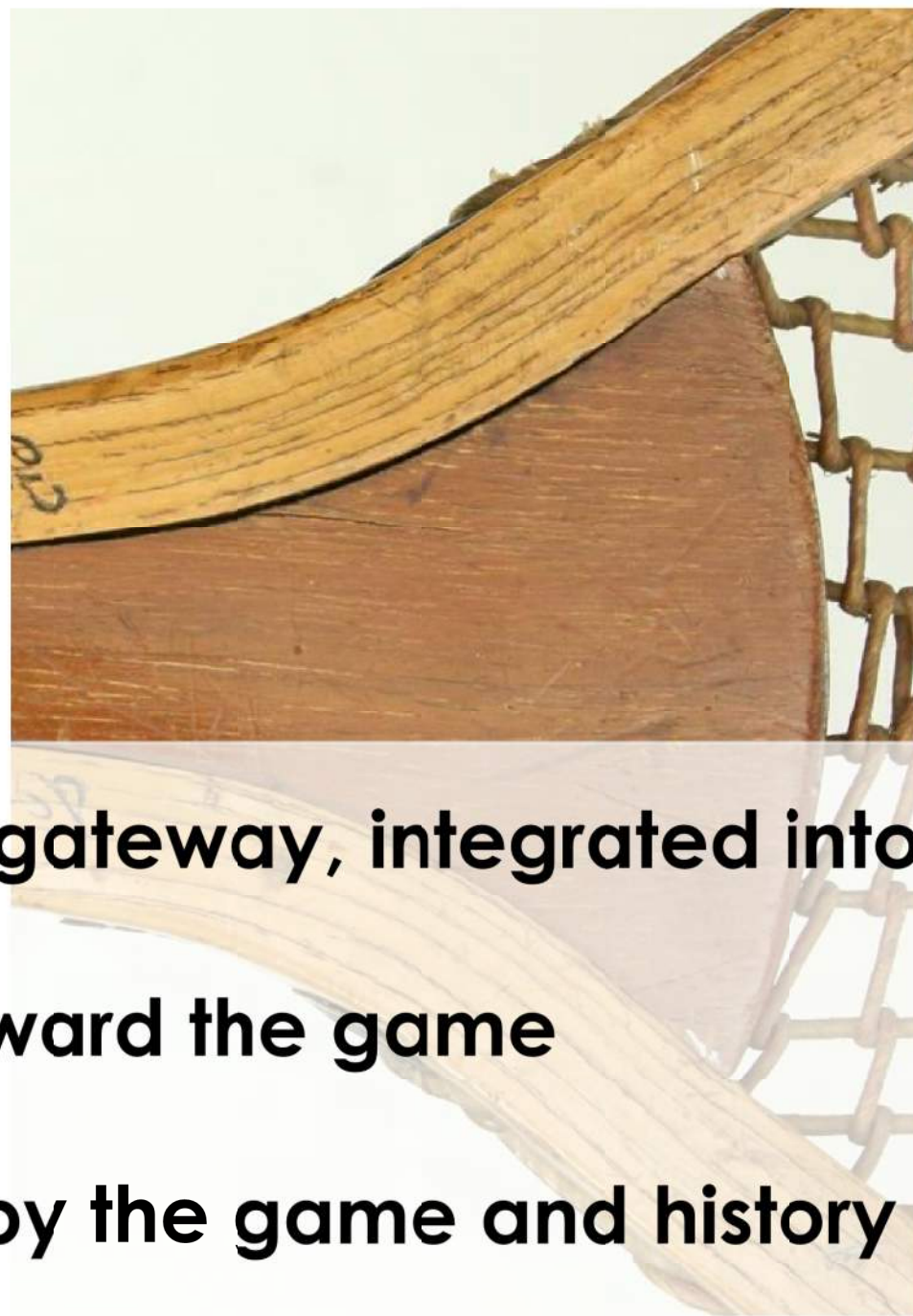
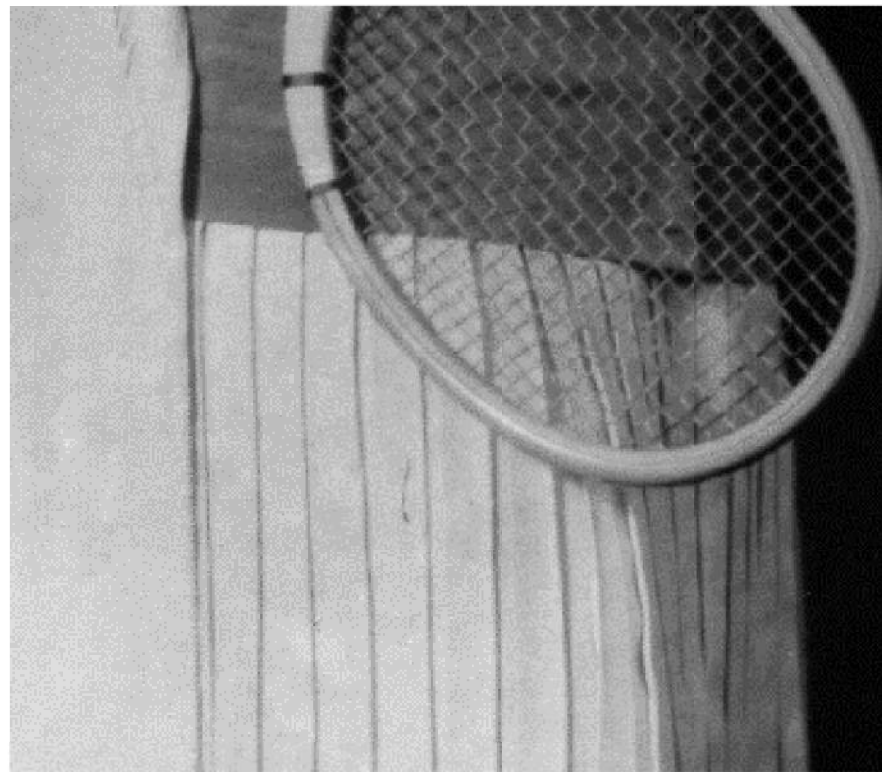
glass wrapper



7,441 Gross SF



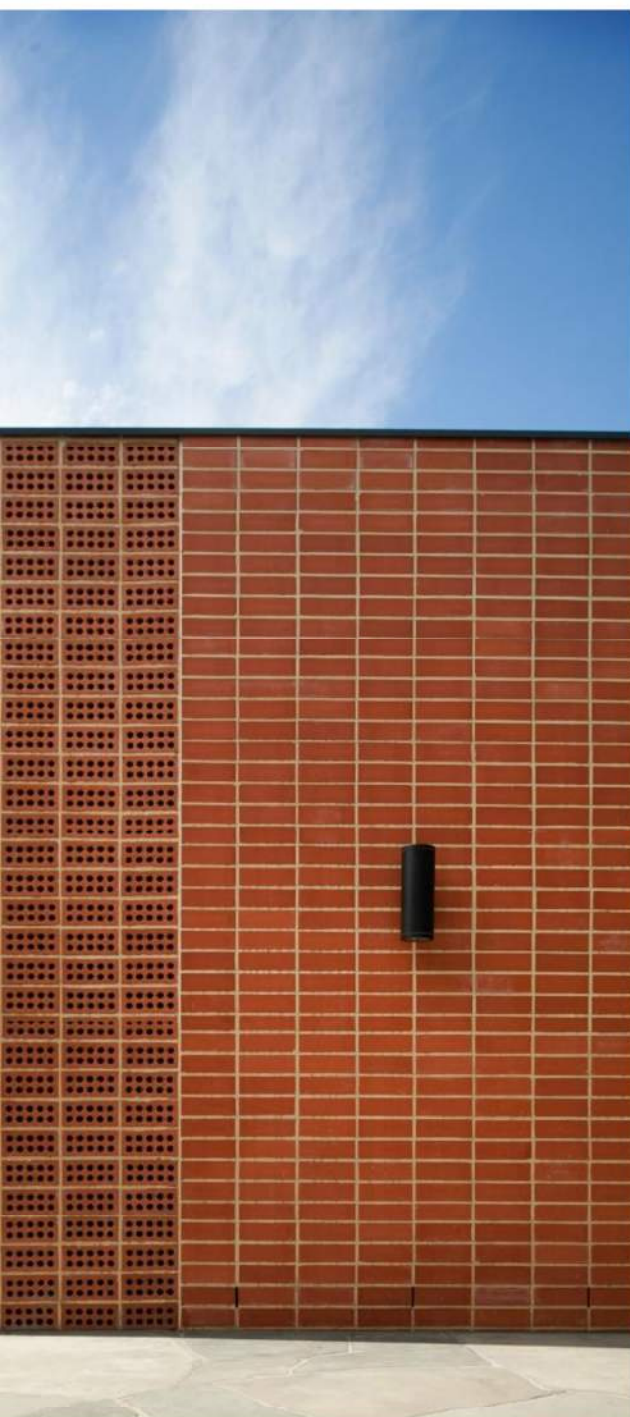
# clubhouse plan



**Low slung, simple, gateway, integrated into the landscape**

**Focus is entirely toward the game**

**Materials inspired by the game and history of tennis and the site**



Protective 'clay' wall facing the park



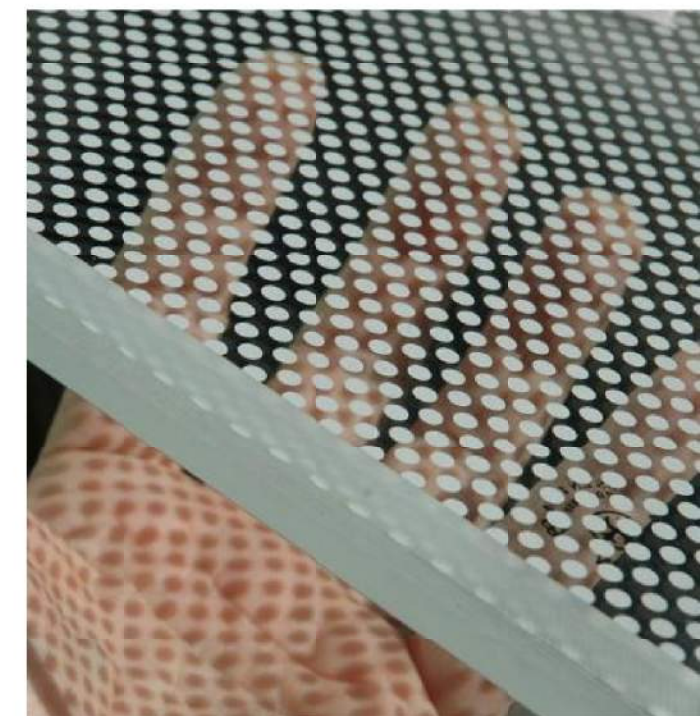
Metal roof with PVs



Exhibit 'Wall of Tennis'



Wood ceiling & operable glass wall facing the game



Glass with ceramic frit



West: facing berm

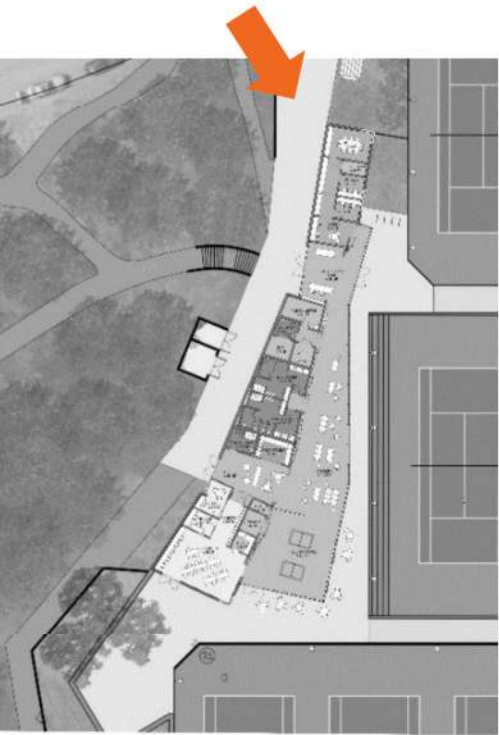


East: facing courts

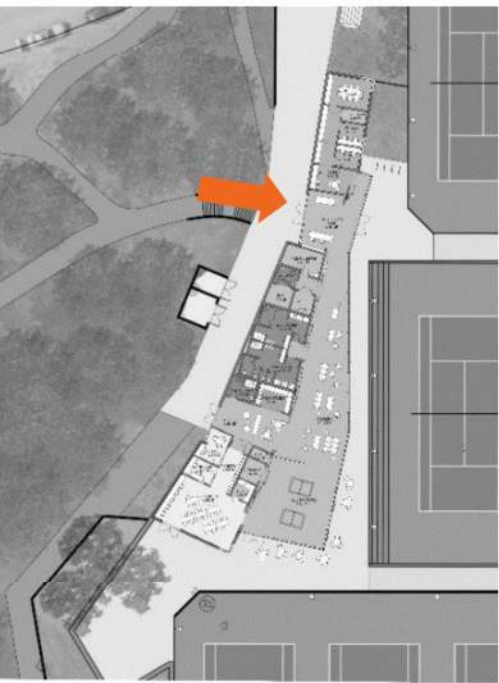


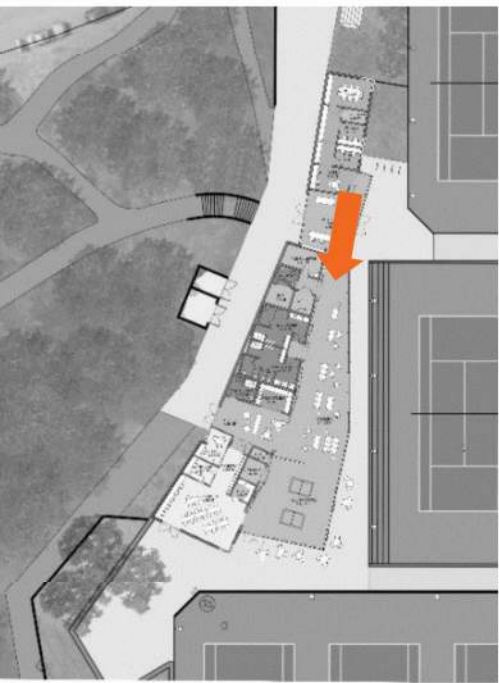
ehdd.

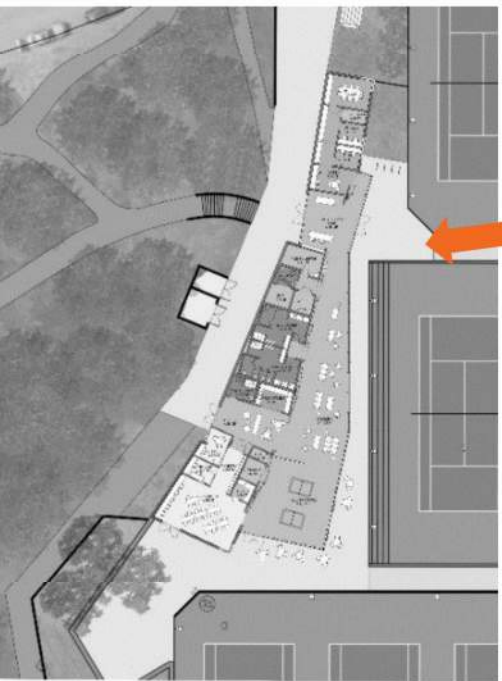
perspective view – landscape approach

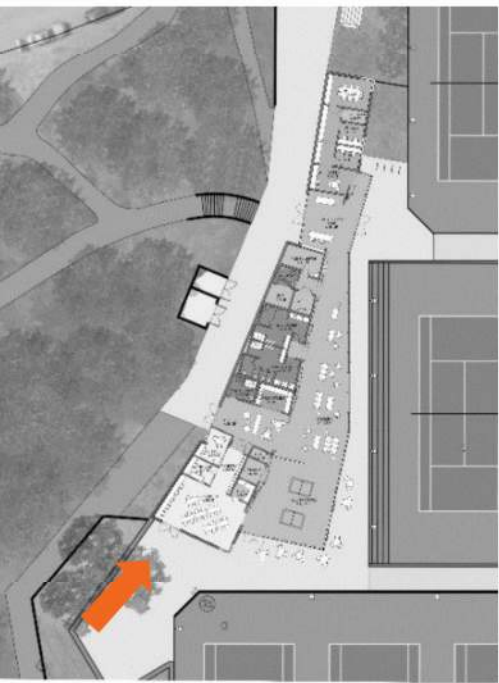






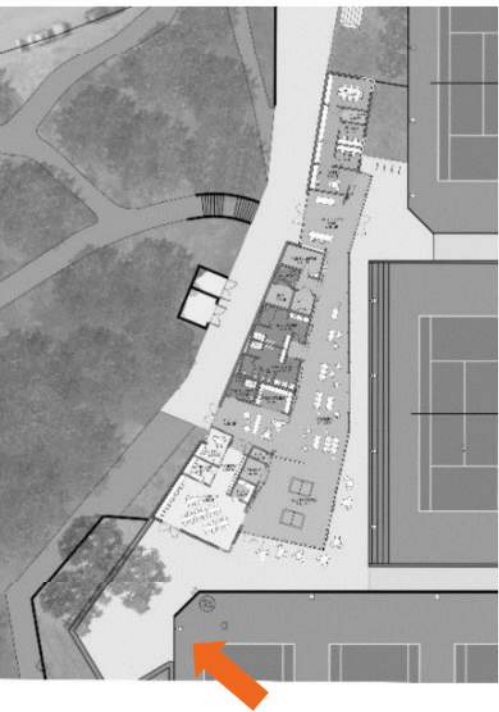






ehdd.

perspective view – South facade

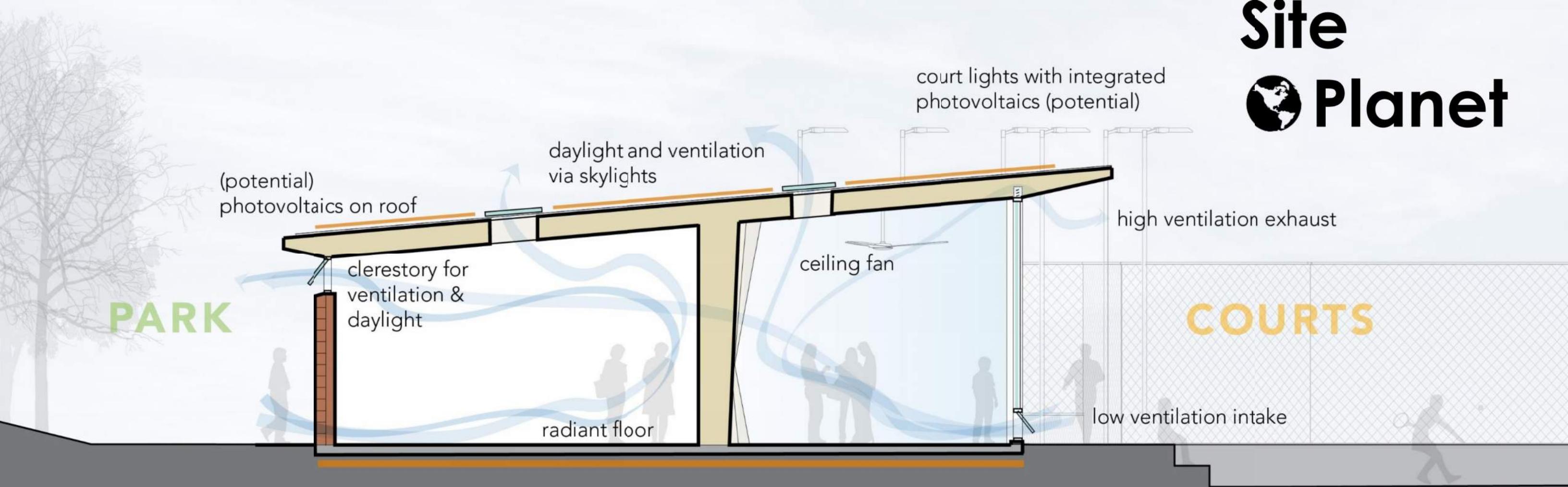


ehdd.

perspective view – landscape garden

Healthy:

● Players  
Building  
Site  
● Planet

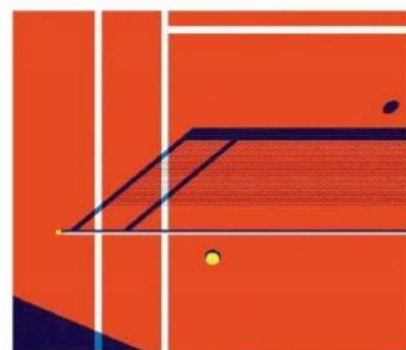




A. INTERPRETIVE ART AT HISTORIC STEPS



B. ART AT GATES



C. ART AS BACKDROP OF PLAY (AT TENNIS WALLS)