

ehdd.



GOLDEN GATE PARK TENNIS CENTER



The Tennis Coalition promotes San Francisco's advantage for year-round public tennis by spearheading the renovation of the historic Golden Gate Park Tennis Center and strengthening San Francisco's tennis community.

Architect:



Contractor:



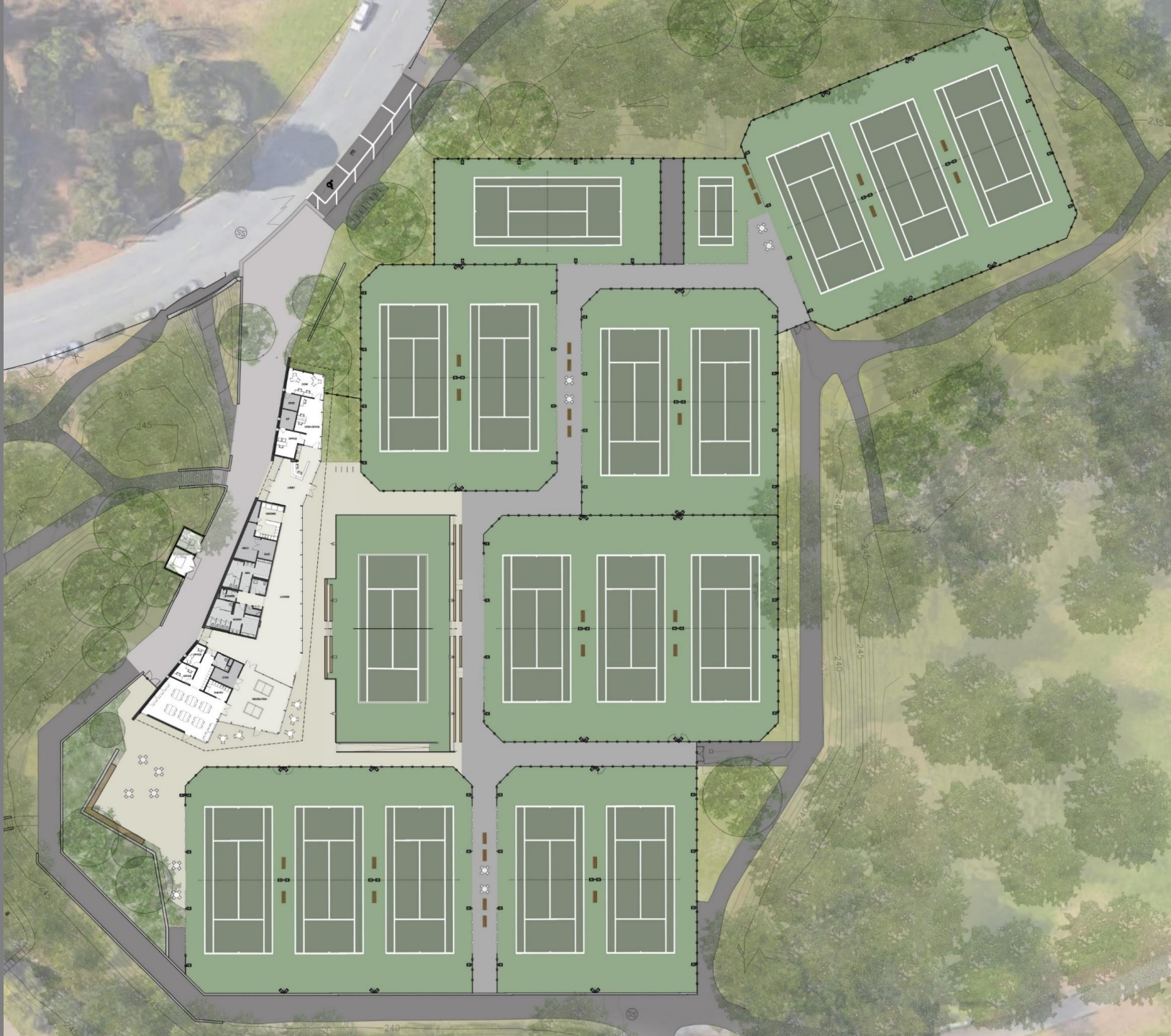
Consultants:

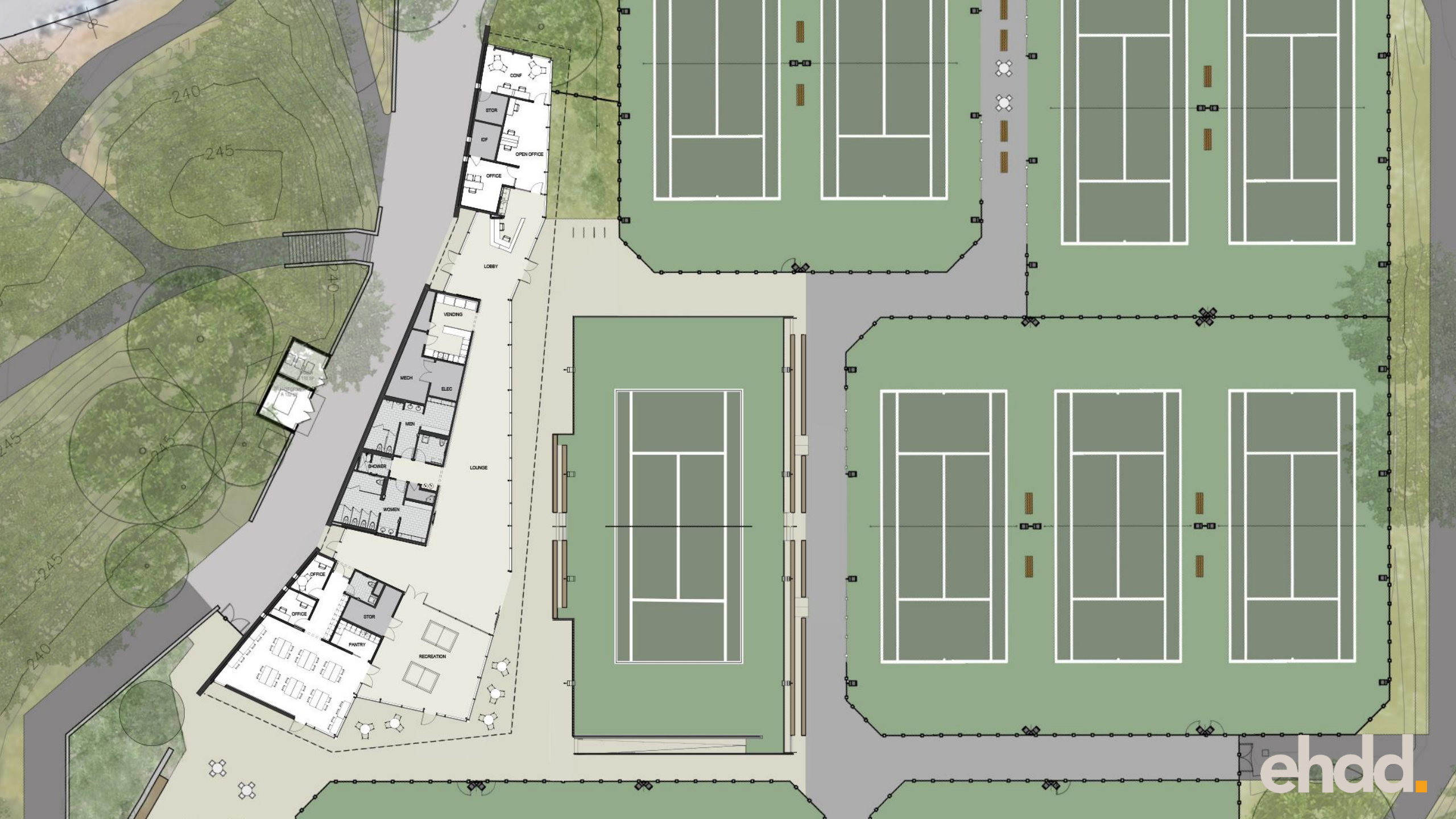


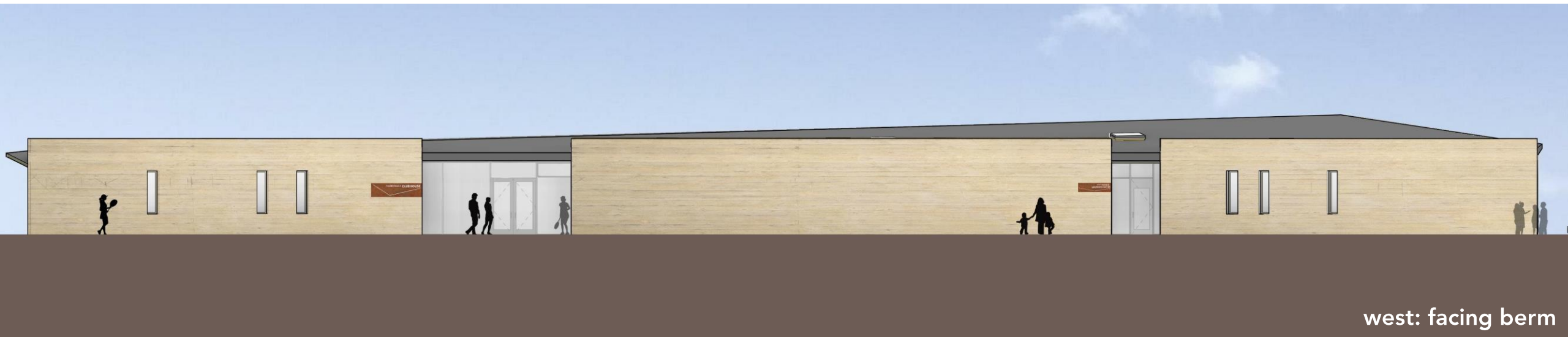
This project is being developed through a public-private partnership between the Tennis Coalition, the SF Parks Alliance and SF Rec and Park. The design team is led by EHDD Architecture. Our process is highly collaborative to leverage the expertise of our talented team of consultants. Plant Construction is on board for constructability and cost review and will be the contractor for the privately bid project scope.













CLUBHOUSE

ehdd.





SPIN

Art Proposal for the Golden Gate Park Tennis Center Public Art Project

Sanaz Mazinani

SPIN is an artwork inspired by the movement and flow in tennis. The mural is composed of imagery exhibiting athleticism juxtaposed, overlapped, and repeated to create a multi-layered visual tapestry.

Viewed from afar, an abstract symmetrical pattern of curving and weaving lines can be seen. From up close, the patterned surface reveals action shots in kaleidoscopic formations of some of the most exceptional and boundary-redefining players in the history of tennis. Each figure was chosen for their great abilities in the sport but also for their commitment to bettering the world around them.

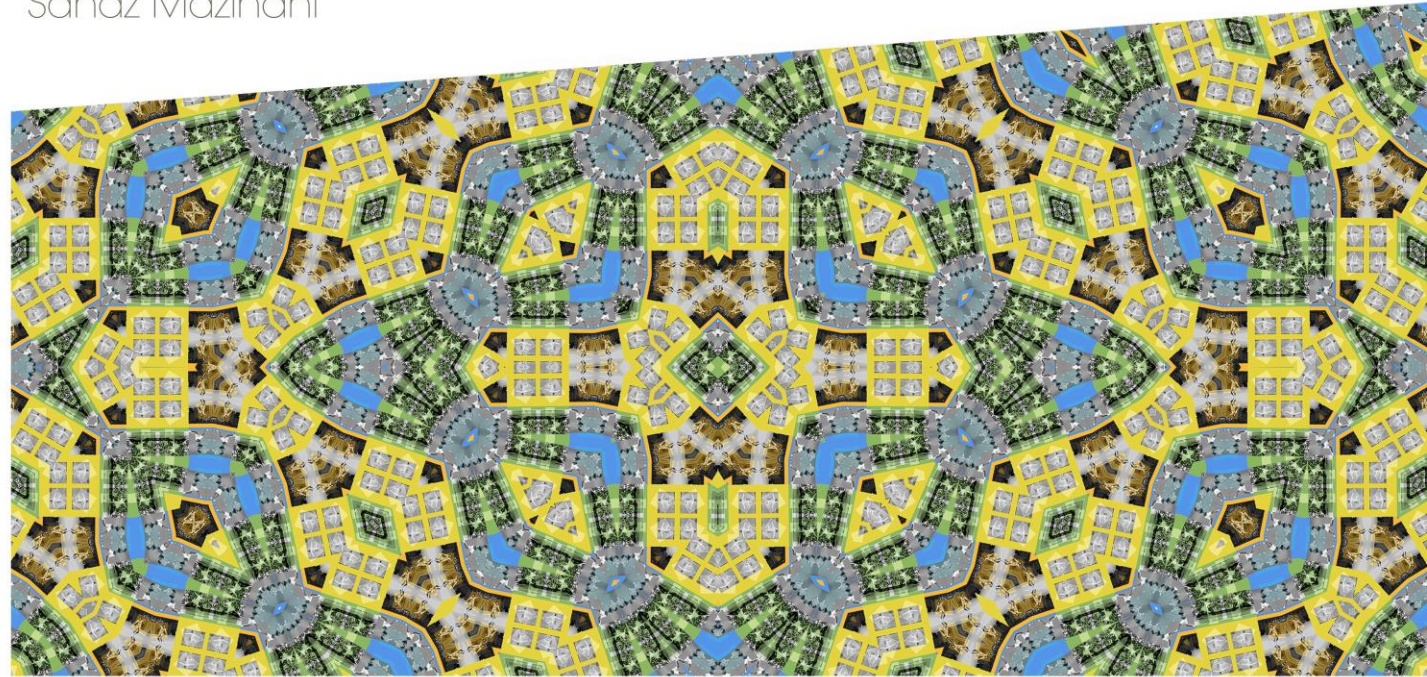
Included is Alice Marble who trained as a teenager in San Francisco and ranked No. 1 in 1939. After she retired from pro tennis, Marble worked on the advisory board of DC Comics where she was an editor on *Wonder Woman*.

Arthur Ashe was an American tennis player who won three Grand Slam titles, and also the only black man ever to win the singles title at Wimbledon. Ashe was also an active civil rights supporter, who co-founded the National Junior Tennis League in 1969 to expose underprivileged children to tennis while encouraging discipline and focus on academia.

Billie Jean King is a former World No. 1 tennis player who won a record 20 championship titles at Wimbledon. She was the founder of the Women's Tennis Association and played an integral role in pushing for gender equality.

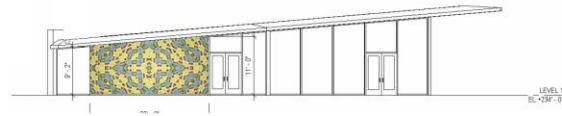
Roger Federer is a Swiss professional tennis player who has won 19 Grand Slam singles titles, the most in the history for a male tennis player. His Foundation raises funds for education programs in southern Africa.

This bold and uplifting mural will activate the garden, beautify this world-class tennis facility, while highlighting the history of tennis in support of the Learning Centre's Programs.

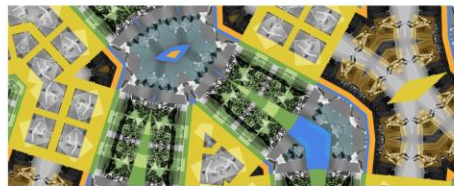


The pattern is created from four images showing Alice Marble, Arthur Ashe, Billie Jean King, and Roger Federer.

The color palette is inspired by the garden, and the new building's color themes.



The mural is 22' long and between 9 and 11' high on the south facade of the Tennis Learning Center.



View of the SPIN mural from the garden.



This photo-based mural will be printed onto ceramic tiles graded for long term outdoor use. The artist will work with Magnolia Editions located in Oakland to reproduce the mural on a series of large rectangular tiles at extremely high fidelity. The tiles will be laid very close together to minimize any break in the imagery.

Phase 2: Design Development Comments

"The design team presented the updates to the Tennis Center design, providing a model, and material and color samples. The latest updates include having the roof edge cut straight rather than following the contours of the building, maximizing the curtain wall mullion spacing, tapering the roof down versus up, and selecting the external wall by the center's garden for art enrichment. The team also provided renderings of the center, courts, and the garden.

The Committee thought the team did a terrific job in bringing their ideas from concept back into the design. They suggested that trees in the garden be moved if they obstructed the view of the art wall. They also asked that the team be conscientious of how they planned to use supergraphics on the internal wall of the center. The Committee endorsed the color palette that was recommended by the team and ask the team to review the fenestration pattern.

There was no further public comment.

Motion to approve Phase 1 of the Golden Gate Park Tennis Center Project contingent upon:

1) consideration of location of trees in relation to art; 2) refining the overhang in regards to solar shading and detail; 3) reviewing the fenestration pattern on the concrete wall; and 4) being judicious in the use of supergraphics."

Phase 2: Design Development Comment

1. Consideration of location of trees in relation to art

Response



Art wall is now unobstructed; tree and seating locations have been revised



Phase 2: Design Development Comment

2. Refining the overhang in regards to solar shading and detail

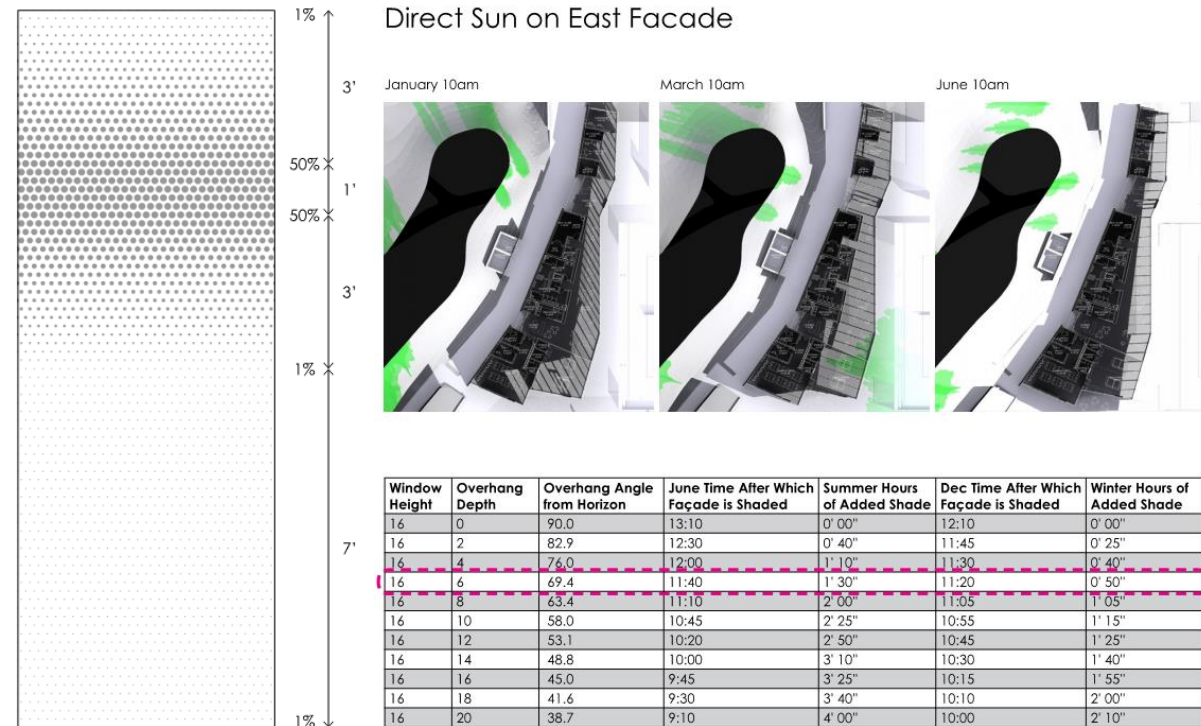


DD Design Review: Roof profile revised to act independently from plan geometry and create pockets for shelter and gathering

Response

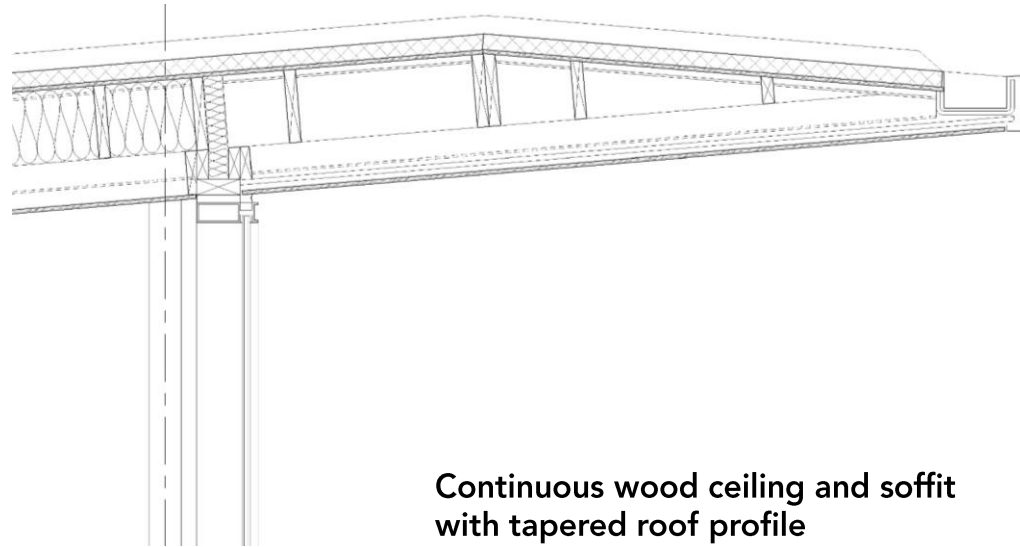


The extent of roof overhang was determined based on a series of studies that balanced the structural roof depth and solar shading requirements. The roof overhang reduces sun penetration in the late morning and helps to limit glare from the high sky; however, the overhang alone does not provide sufficient solar control. A custom graduated frit pattern on the glass minimizes glare through reduction of views to the bright part of the sky and solar shades are also provided where needed for occupant comfort.



Phase 2: Design Development Comment

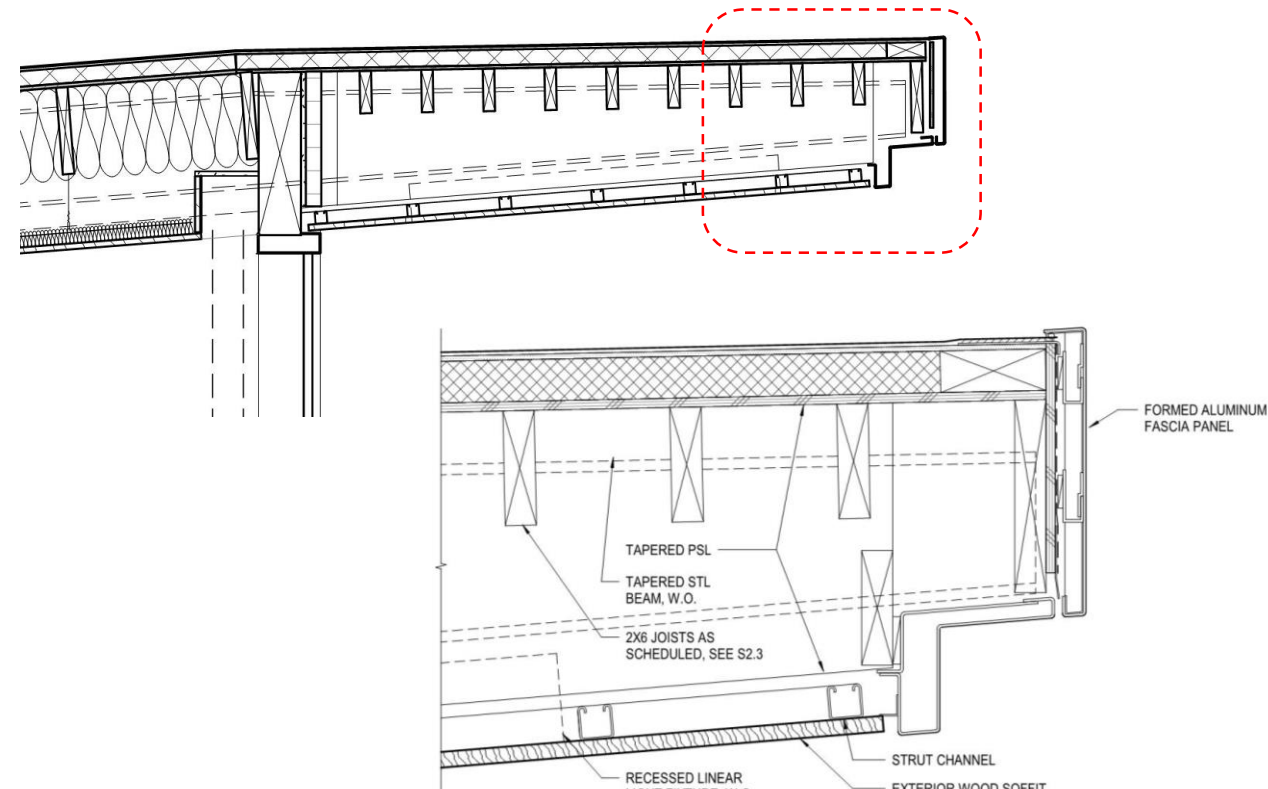
2. Refining the overhang in regards to solar shading and detail



Response



Roof assembly has been modified to reduce amount of steel and minimize extent of required gutters per client cost reduction request. The aluminum fascia profile is stepped to provide the thinnest profile possible per structural requirements. The continuous wood ceiling and soffit plane is maintained.





Phase 2: Design Development Comment

west: facing berm

3. Review fenestration pattern on the concrete wall



west: facing berm

Response

The location and size of the punched operable windows along the Western concrete wall are designed to enhance the interior design, natural ventilation, occupant experience, and exterior composition. Minimal openings are provided along the western wall for privacy and security. The large lobby openings will have an after-hours security grille.

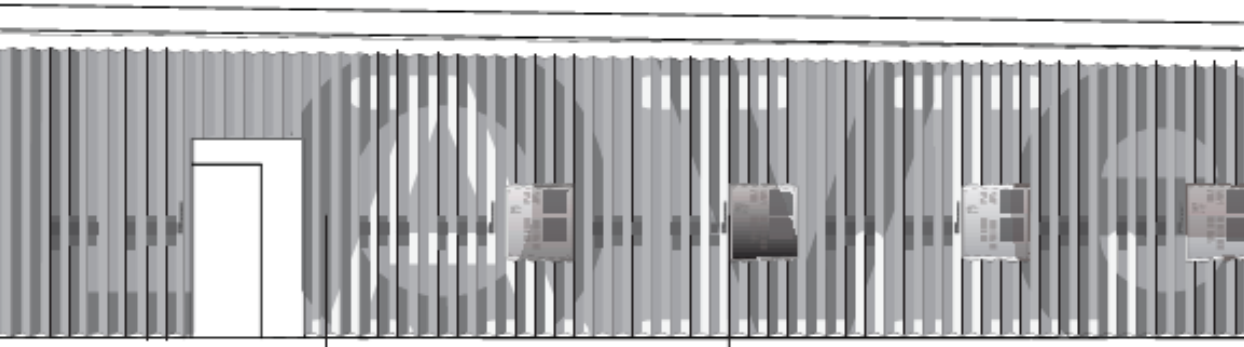
Phase 2: Design Development Comment

4. Be judicious in the use of supergraphics

Response



The interior exhibit wall, located adjacent to the Lounge, will tell the history of tennis on the site, focusing on the stories of people that have called these courts their home and the community that has been cultivated in this unique place. The overarching graphic incorporates tennis terminology on a lenticular wall—"Love" is read from one direction, "All" is read from the other. The graphics and color of the wall are still in development. The color palette will be complimentary to the exterior tile color at lobby entrances and art wall.



1.02 Wall covering

1.03 Acrylic panel with graphics and standoffs



