



HERZ RECREATION CENTER
CIVIC DESIGN REVIEW • CONCEPT DESIGN
AUGUST 17, 2020

LEDDY MAYTUM STACY ARCHITECTS

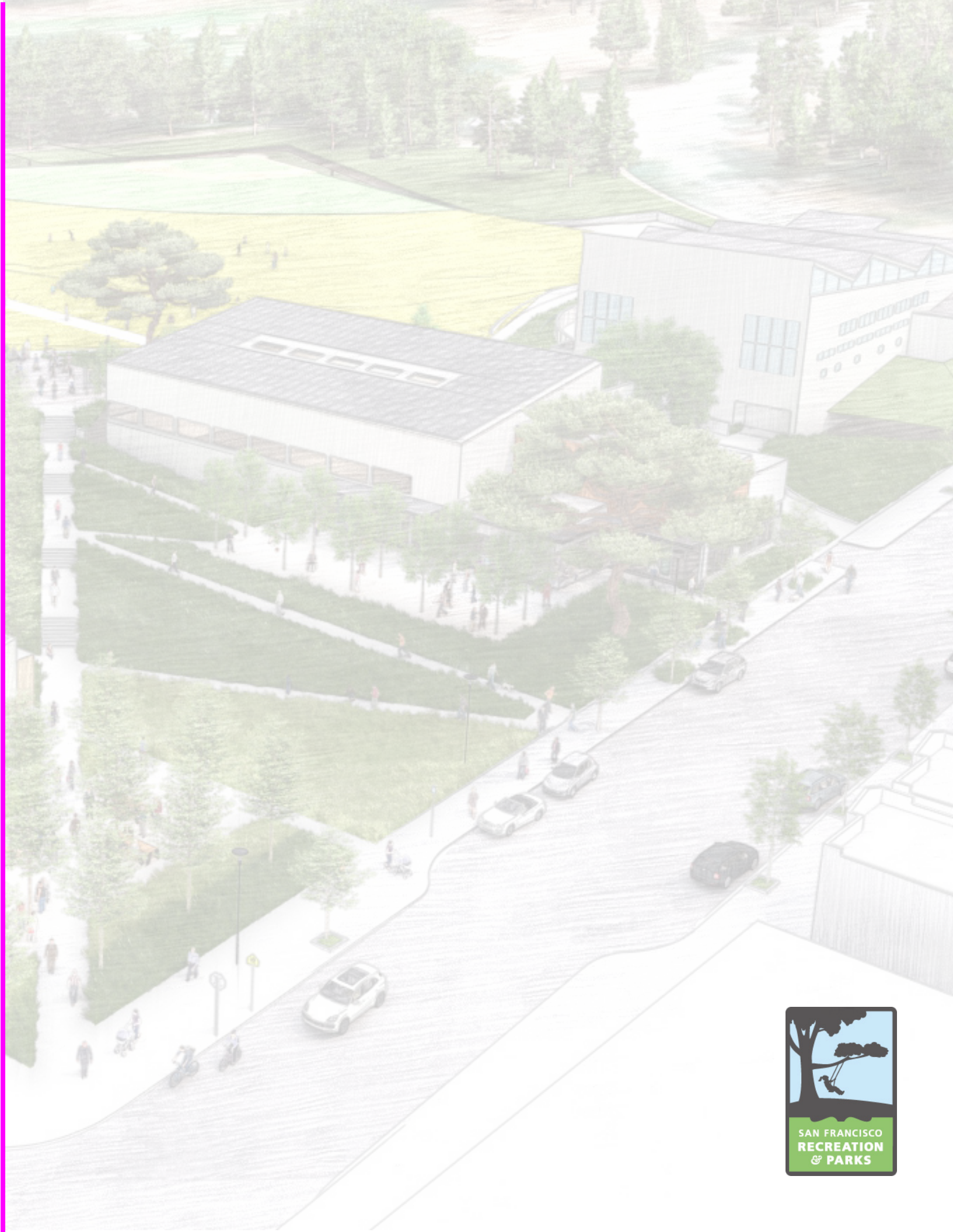


ANDREA COCHRAN
LANDSCAPE ARCHITECTUR
2325 Third Street #210
San Francisco CA 94107
415.503.0060



01

SITE CONTEXT



PROJECT LOCATION



VISION STATEMENT



EXISTING AERIAL VIEW LOOKING WEST

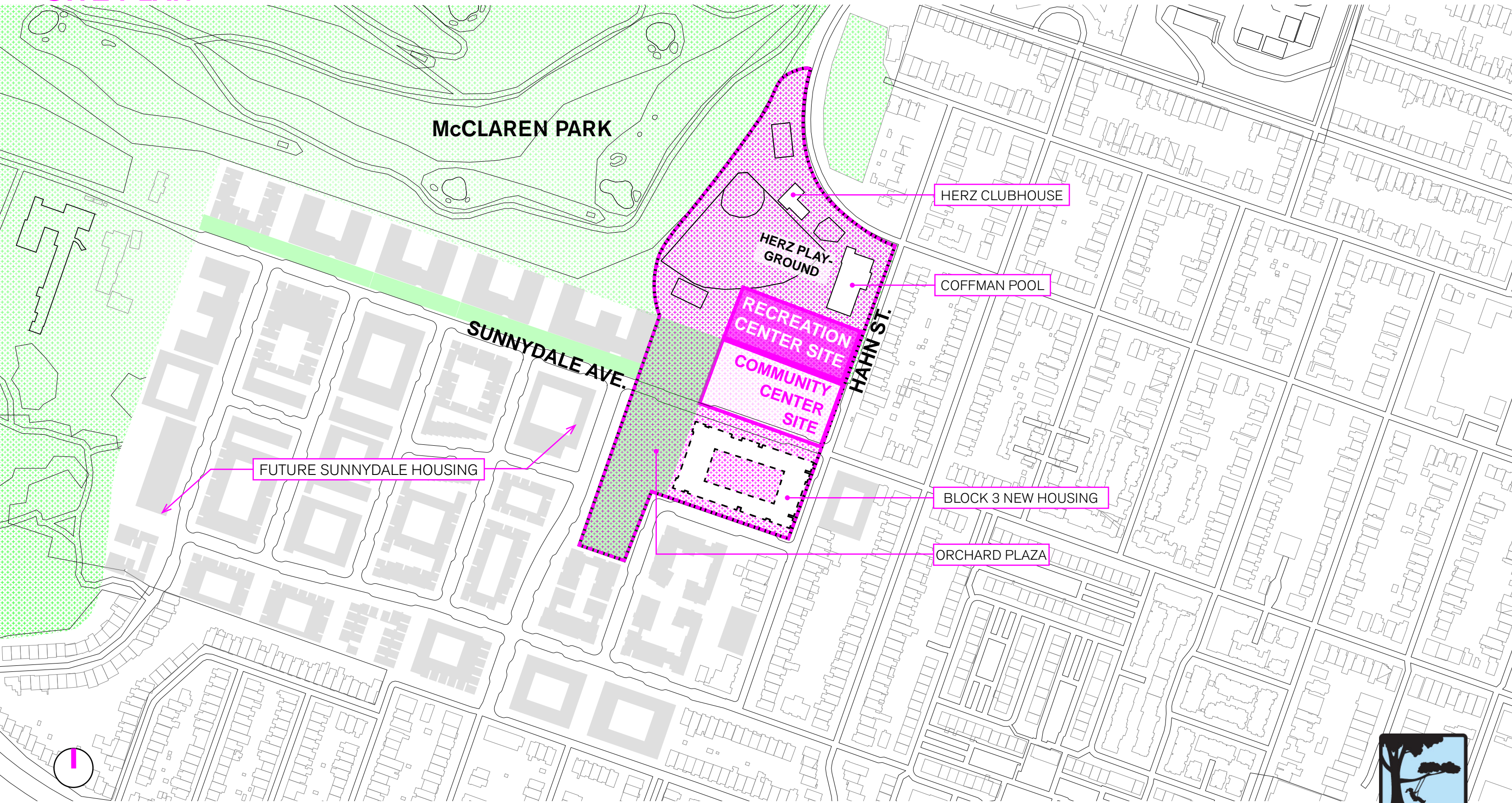


MASTER PLAN VIEW LOOKING WEST

THE COMMUNITY CENTER/HERZ PARK NEIGHBORHOOD CAMPUS AND THE NEW DEVELOPMENT AT THE HUB WILL BE:

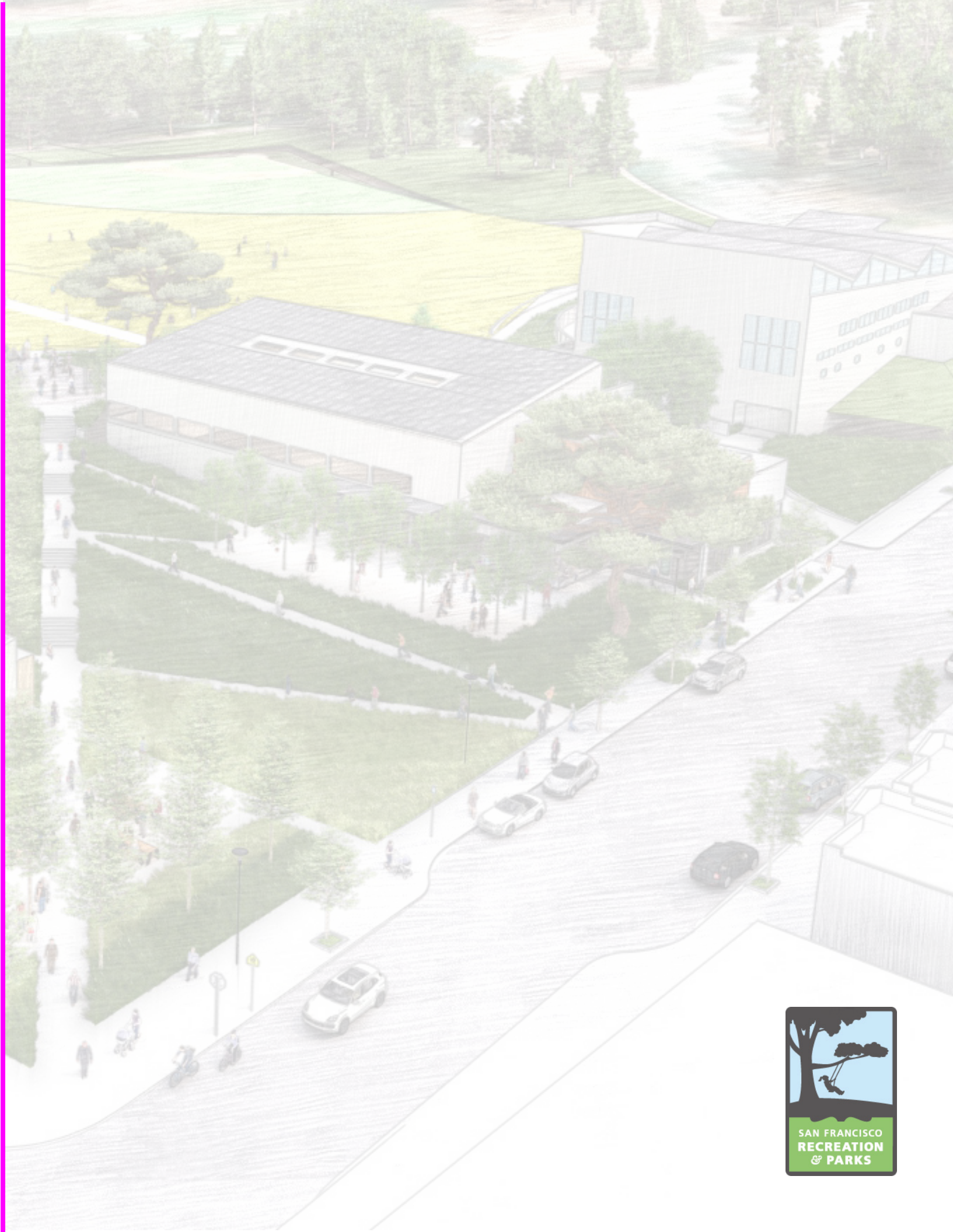
- AN **INCLUSIVE, SAFE, FRIENDLY, FAMILY- AND YOUTH- FOCUSED** PLACE FOR NEIGHBORHOOD RESIDENTS AND VISITORS.
- **ACTIVE** WITH NEIGHBORHOOD SERVICES AND RECREATIONAL FACILITIES THAT WILL FACILITATE NEIGHBOR-TO-NEIGHBOR CONNECTIONS, EMPATHY AND TRUST, AND ENABLE INDIVIDUALS TO FEEL VALUED AND EMPOWERED TO MAKE POSITIVE CHANGE.
- THE **HEART** OF THE NEIGHBORHOOD AND REFLECT THE RICHNESS OF A RACIALLY AND ETHNICALLY DIVERSE MIXED-INCOME COMMUNITY.

SITE PLAN



02

SITE PHOTOGRAPHS



SITE PHOTOS

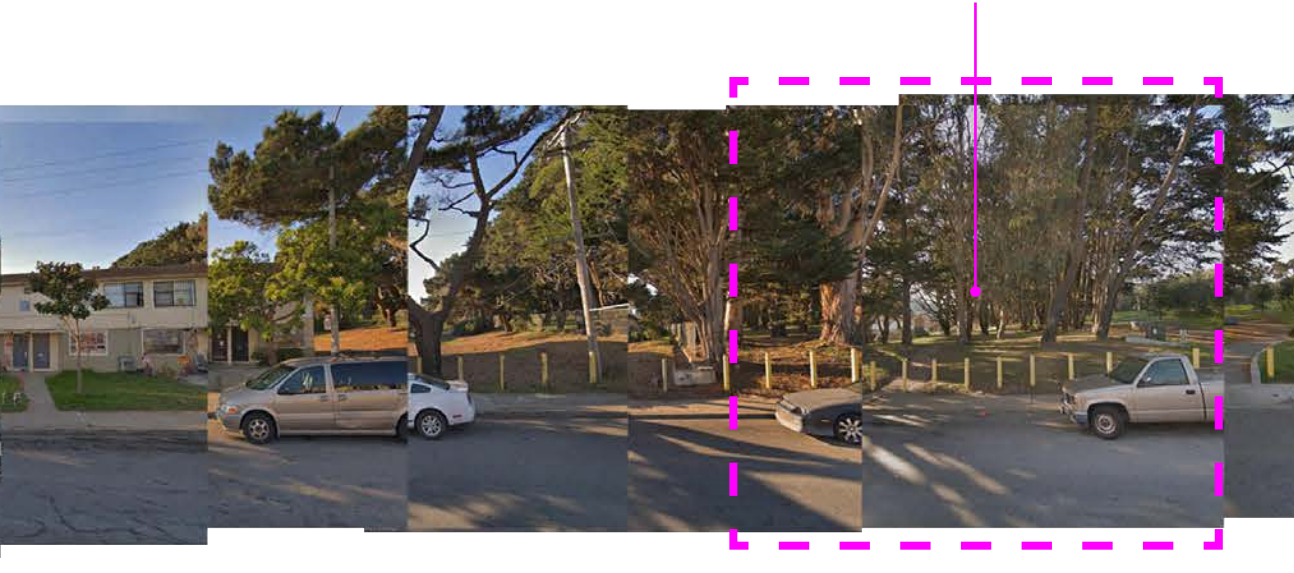
EXISTING STREET FRONTAGES

FUTURE COMMUNITY CENTER



SUNNYDALE AVE.

FUTURE HERZ RECREATION CENTER



HAHN STREET LOOKING NORTH WEST TOWARDS MCLAREN PARK

COFFMAN POOL



VISITACION AVE.



HAHN STREET LOOKING SOUTH EAST TOWARDS VISITACION VALLEY

SITE PHOTOS



EXISTING MURAL AT CORNER OF HAHN ST. + SUNNYDALE AVE.



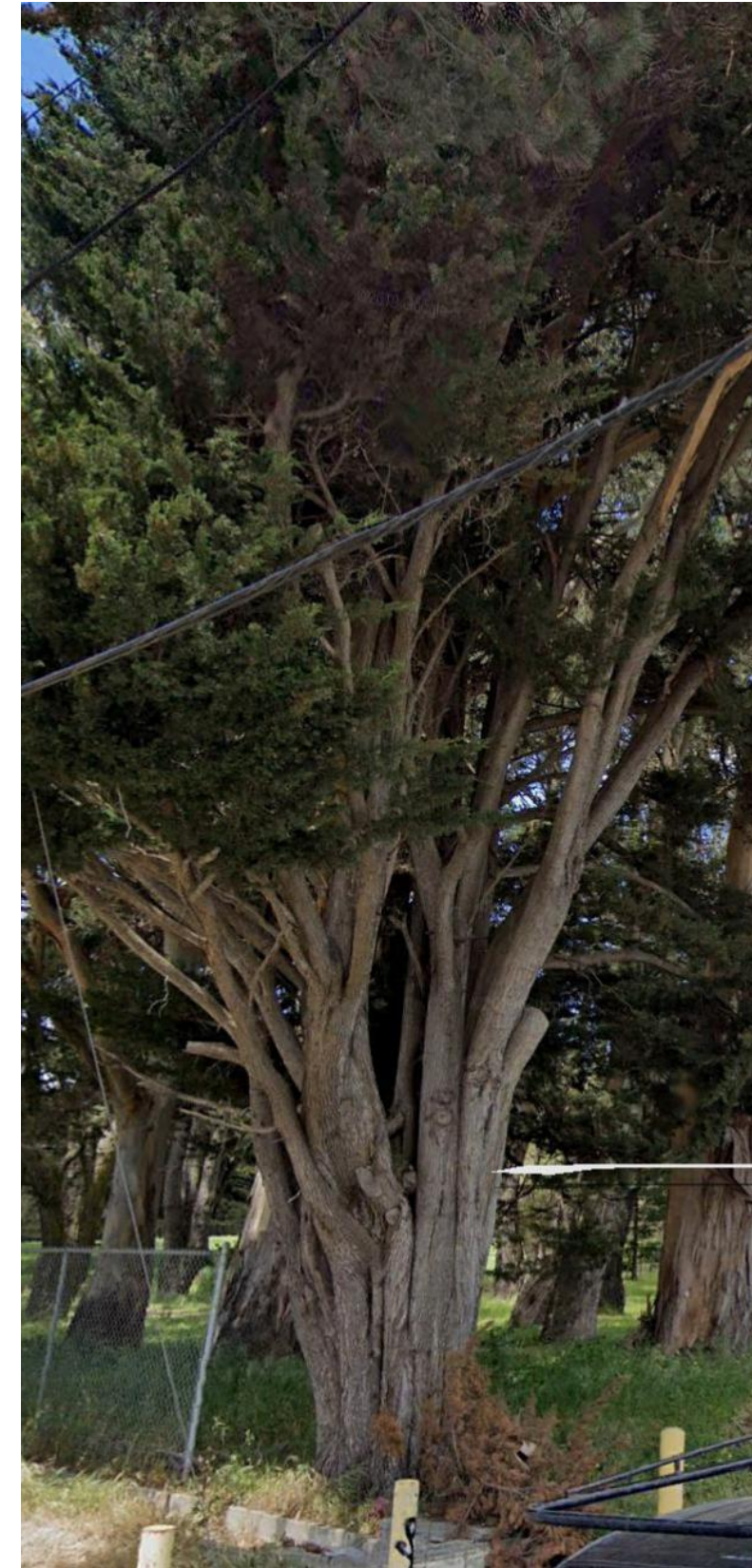
VIEW ON SITE LOOKING SOUTH TOWARD FUTURE COMMUNITY CENTER



(E) COFFMAN POOL TRANSFORMER AT SOUTH OF BUILDING SITE

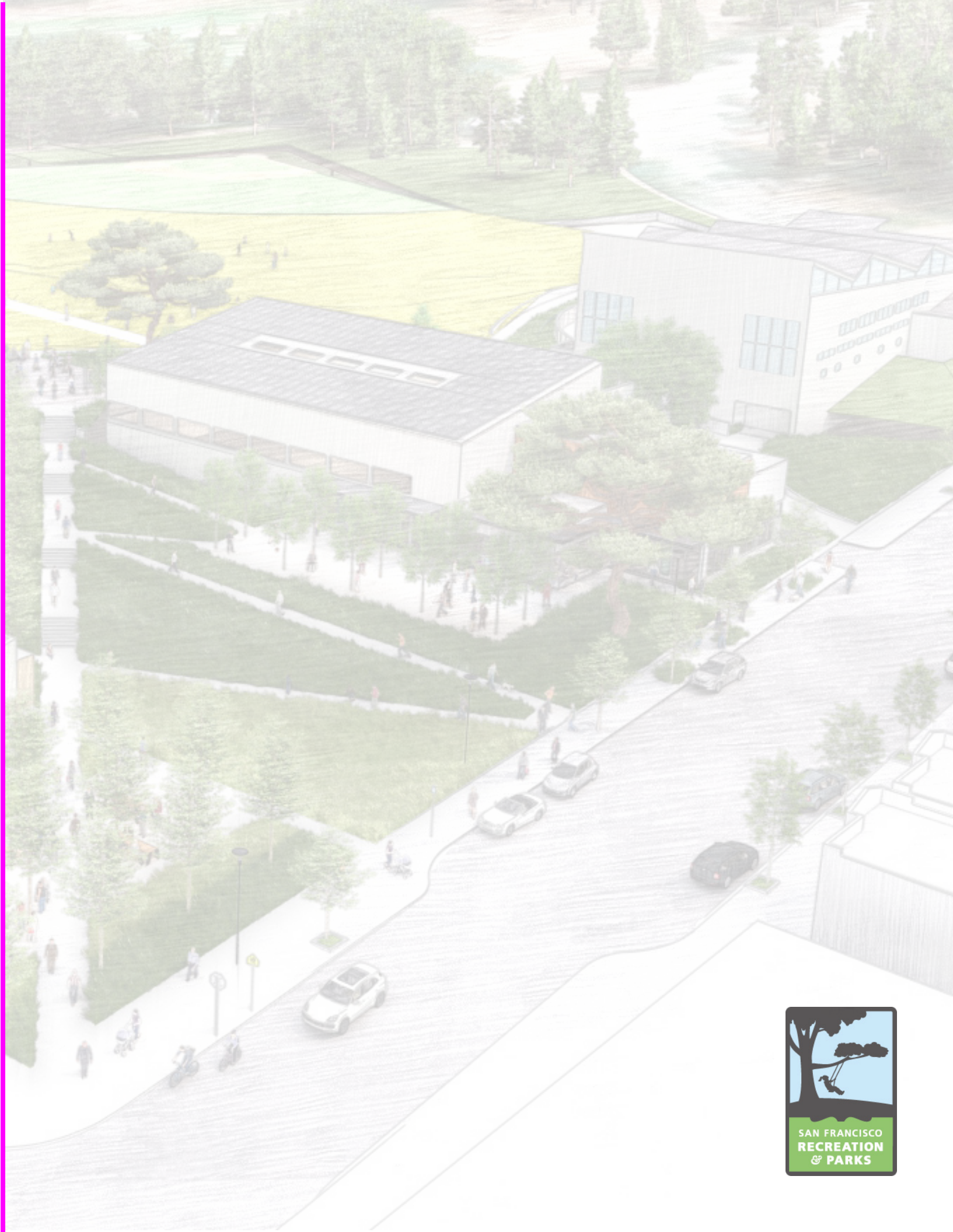


EXISTING PATH IN MIDDLE OF BUILDING SITE
LOOKING WEST



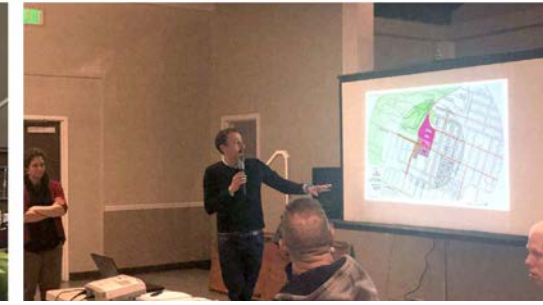
EXISTING MONTEREY CYPRESS ALONG HAHN
STREET AT S.E. CORNER OF BUILDING SITE TO BE
INTEGRATED INTO BUILDING DESIGN

03 PROCESS + PROGRAM



COMMUNITY MEETINGS TO DATE

CREATING A SHARED VISION



2018 **YOUTH LEADERSHIP TEAM**
AUGUST 2018

OPEN HOUSE
SEPTEMBER 2018

WORKSHOP #1
DECEMBER 2018

2019 **WORKSHOP #2**
FEBRUARY 2019

VIS VALLEY FOCUS GROUP
FEBRUARY 2019

FAMILY DAY
MAY 2019

2020 **HERZ COMMUNITY MEETING 1**
JUNE 2019

HERZ COMMUNITY MEETING 2
JULY 2020

FOCUS GROUPS
JULY 2020

STAKEHOLDER MEETINGS
AUGUST 2020

HERZ COMMUNITY MEETING 3
FALL 2020

COMMUNITY WORKSHOP 1

VISIONS FOR THE HUB

GROUP 1



FOR EVERYONE

GROUP 2



UNIDAD

GROUP 3



COMMUNITY + FAMILY

GROUP 4



WELLNESS

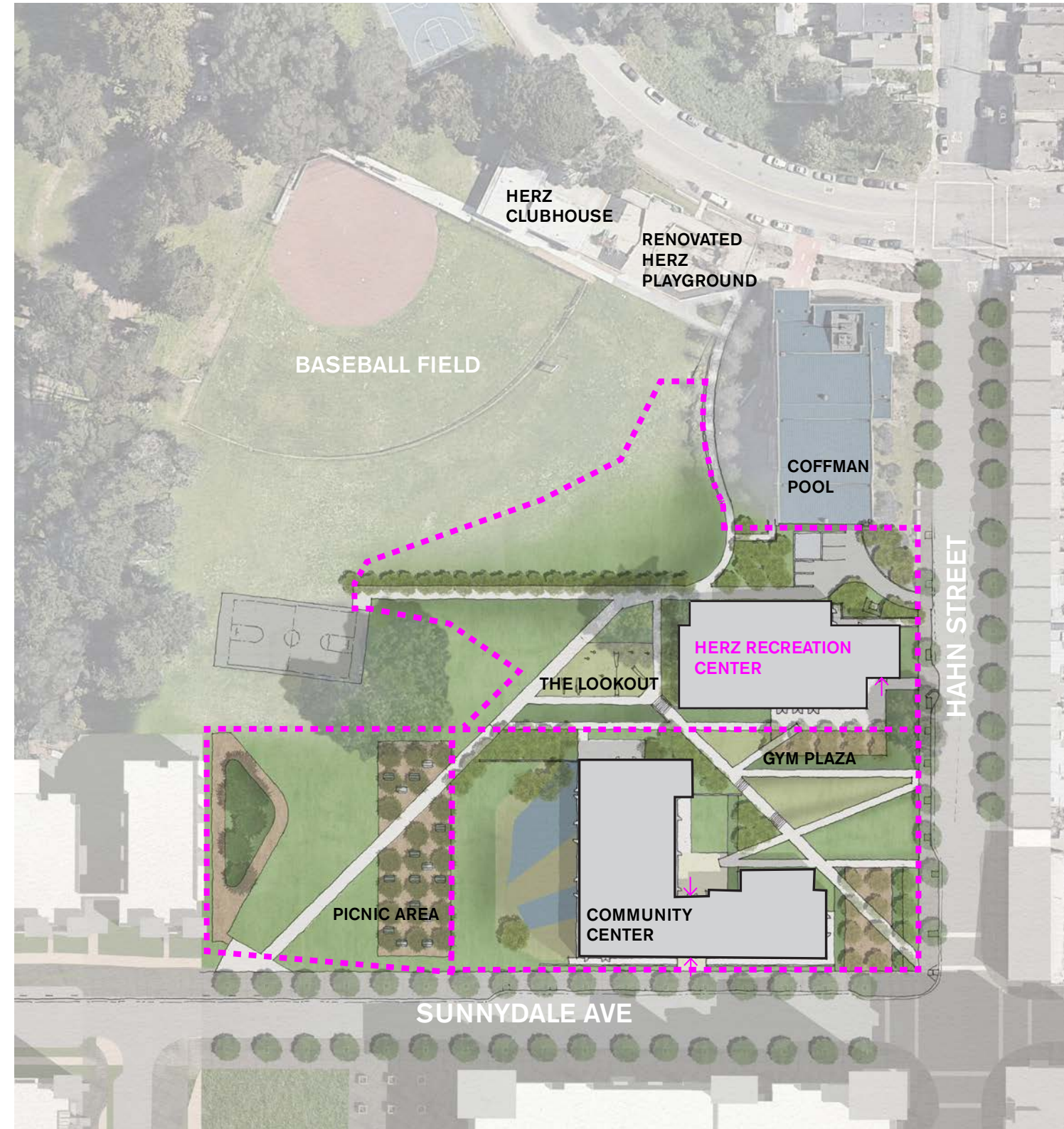
GROUP 5



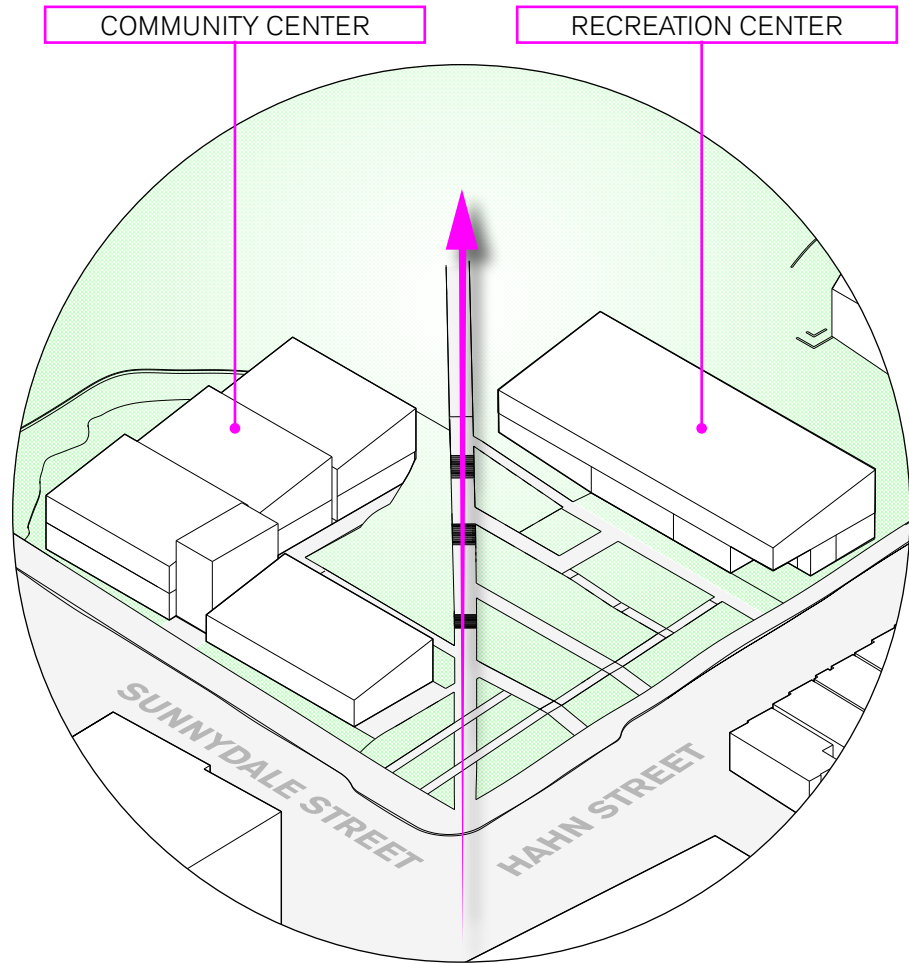
LET'S DO IT AGAIN / BUTTERFLIES

GUIDING PRINCIPLES

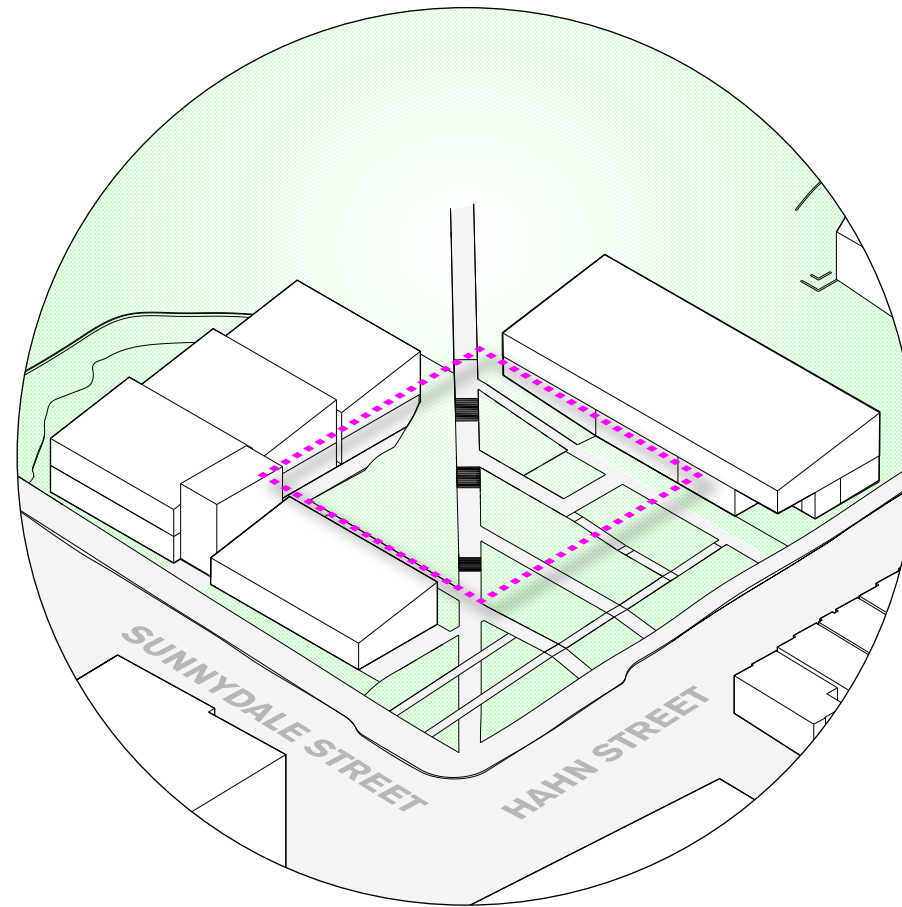
- ESTABLISH AN **ACTIVE** STREET IDENTITY AND SITE PRESENCE
- CREATE A **WELCOMING** INVITATION AND **GATEWAY** TO THE HUB CAMPUS
- OFFER **SAFE** EXTERIOR SPACES WITH **INDOOR / OUTDOOR** CONNECTIONS
- CONNECT TO **NATURE** WITH DAYLIGHT, VIEWS AND ACCESS TO THE PARK
- CREATE **SIMPLE** AND **FLEXIBLE** SOLUTIONS
- PROMOTE A HEALTHY, RESOURCE EFFICIENT AND **REGENERATIVE** COMMUNITY CENTER & GYM



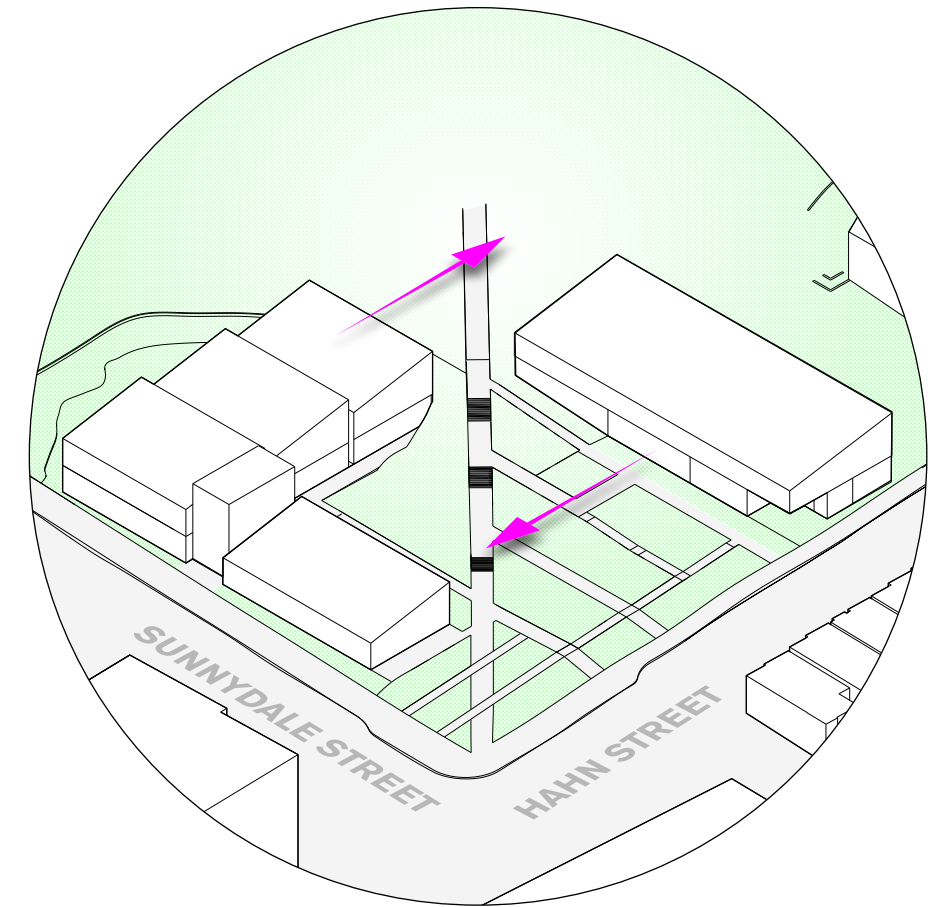
SITING PRINCIPLES



01 | CREATE **GATEWAY** INTO PARK FROM CORNER TO INVITE COMMUNITY FROM SUNNYDALE AND VISITATION VALLEY



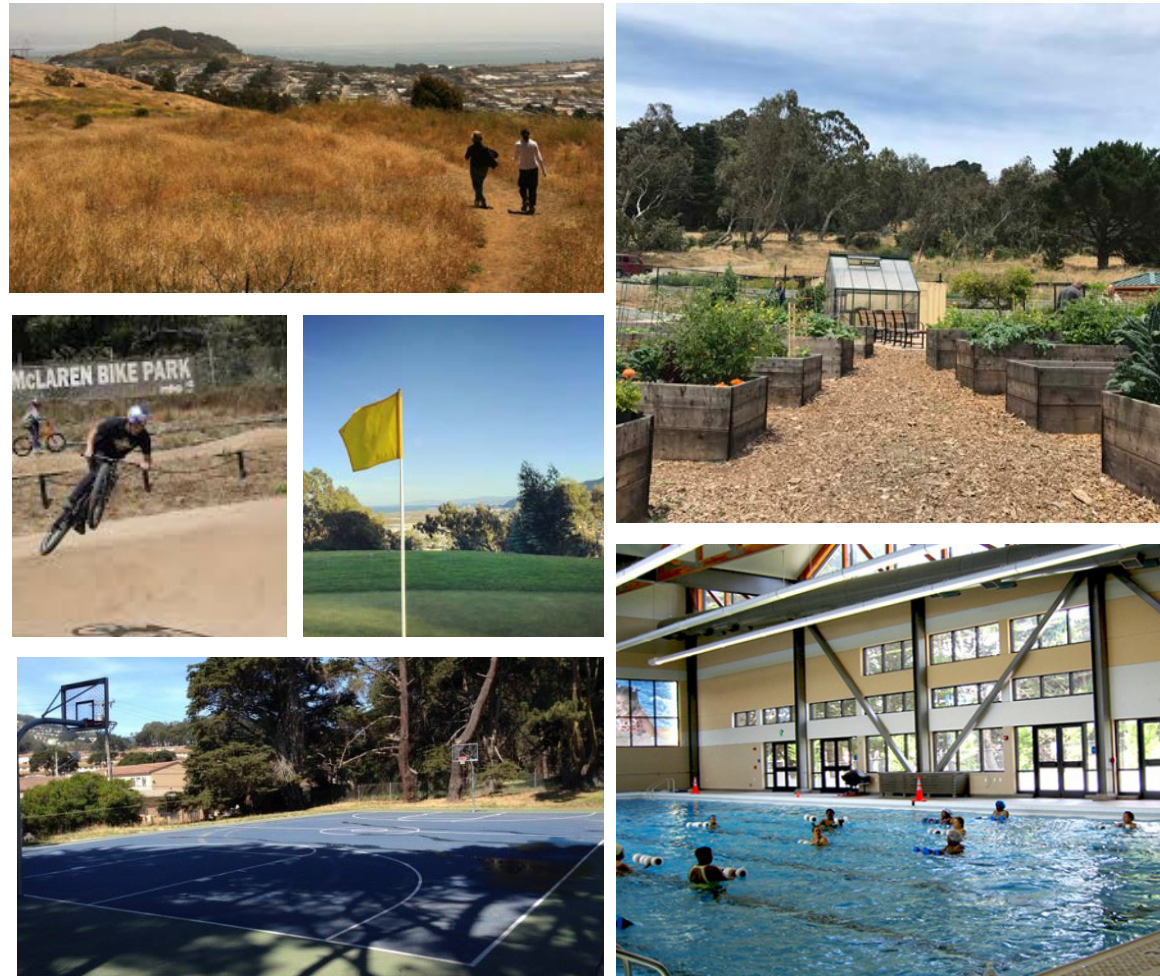
02 | CREATE AN EXTERIOR LANDSCAPE OR SPACE THAT WOULD BE FORMED BY THE BUILDINGS TO ENCOURAGE A **CAMPUS** LIKE ENVIRONMENT



03 | ACTIVATE EDGES AROUND BUILDINGS TO SUPPORT **INDOOR OUTDOOR** ACTIVITY

EXISTING CONDITIONS

A PARK WITH GREAT POTENTIAL



COMMUNITY GARDEN

VISITACION

HAHN

CLUBHOUSE

COFFMAN POOL

SUNNYDALE

EXISTING

PARK GOALS

CREATING AN INTEGRATED + VIBRANT COMMUNITY PARK



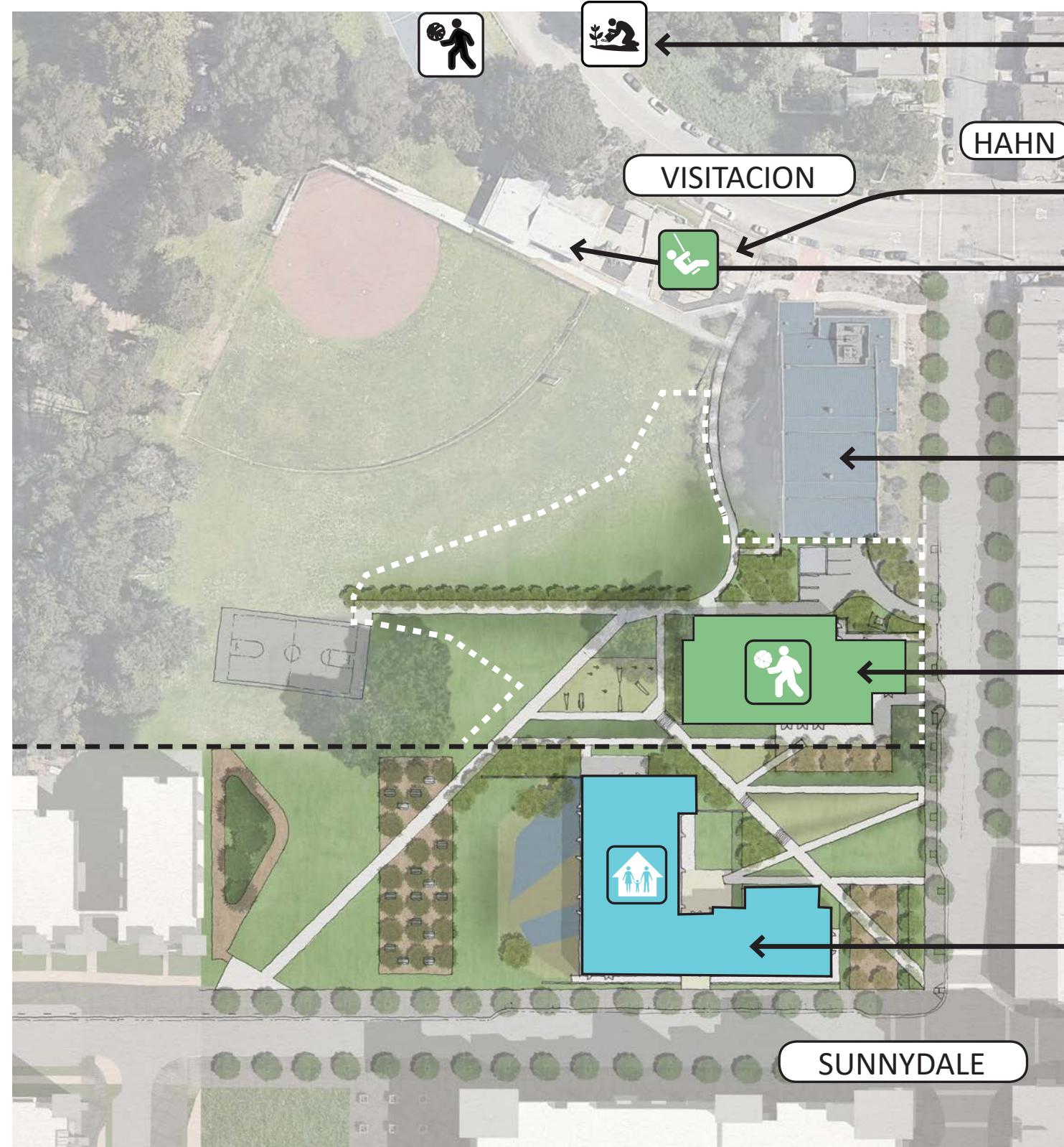
PLAYGROUND



RECREATION CENTER



COMMUNITY CENTER



COMMUNITY GARDEN

PLAYGROUND

CLUBHOUSE

COFFMAN POOL

RECREATION CENTER + GYM

COMMUNITY CENTER BUILDING

PARK GOALS

CREATING AN INTEGRATED + VIBRANT COMMUNITY PARK



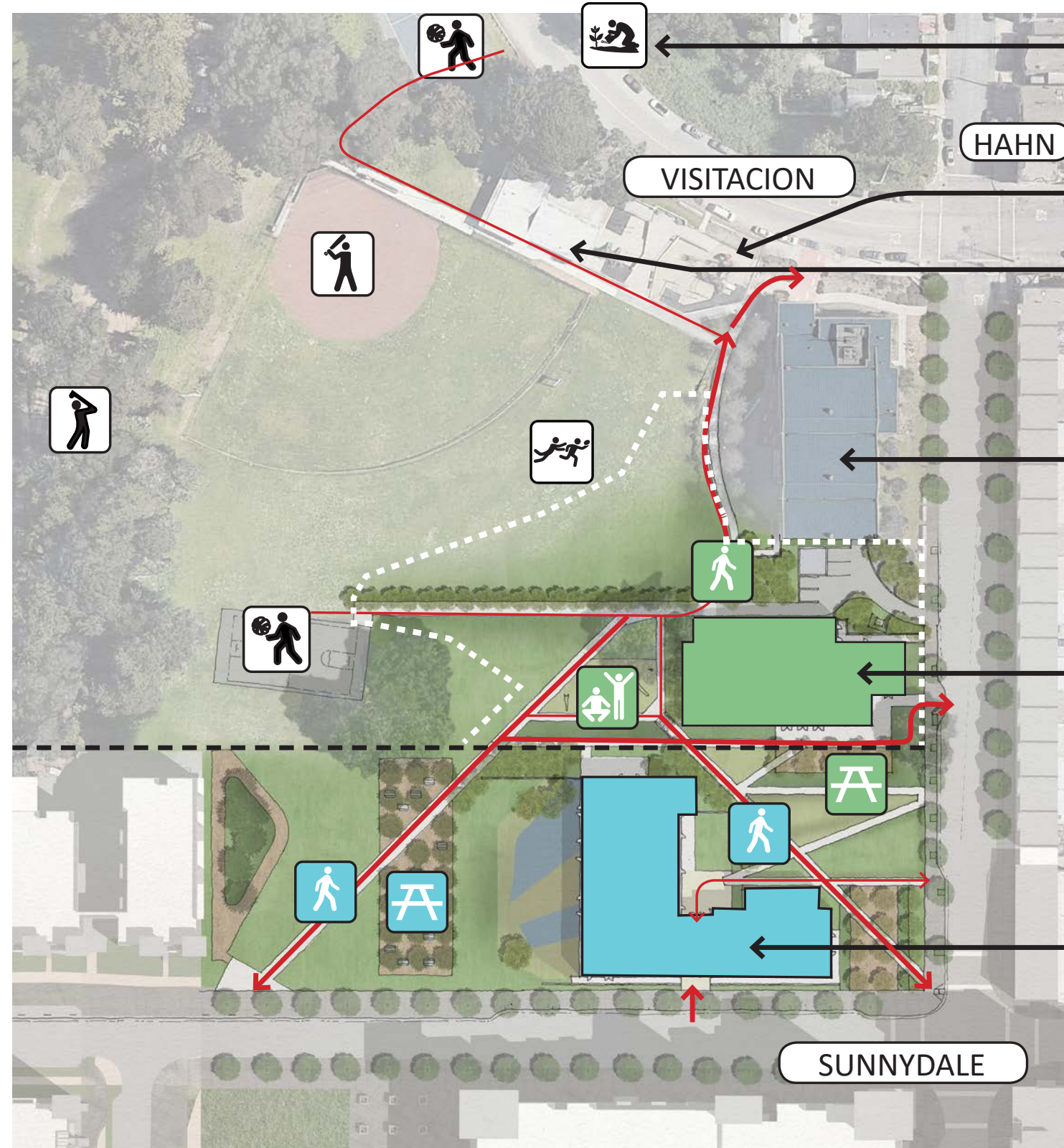
PATHWAYS + CONNECTIONS



OUTDOOR FITNESS



GATHERING SPACES



COMMUNITY GARDEN

PLAYGROUND

CLUBHOUSE

COFFMAN POOL

RECREATION CENTER + GYM

COMMUNITY CENTER BUILDING

HOW DOES IT FEEL



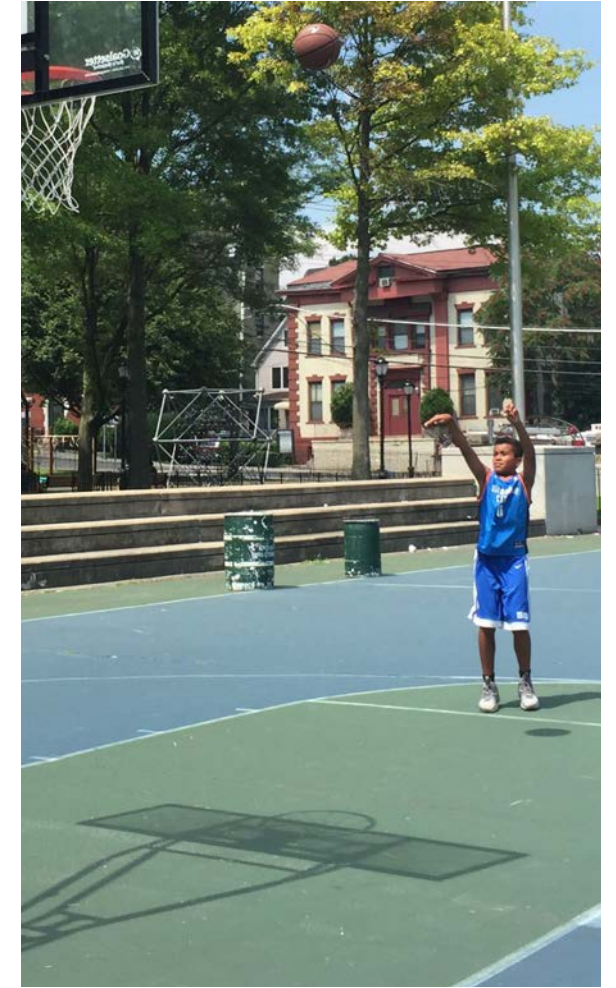
INVITING



BRIGHT + SAFE



FAMILY-FRIENDLY



ACTIVE

TODAY'S DISCUSSION

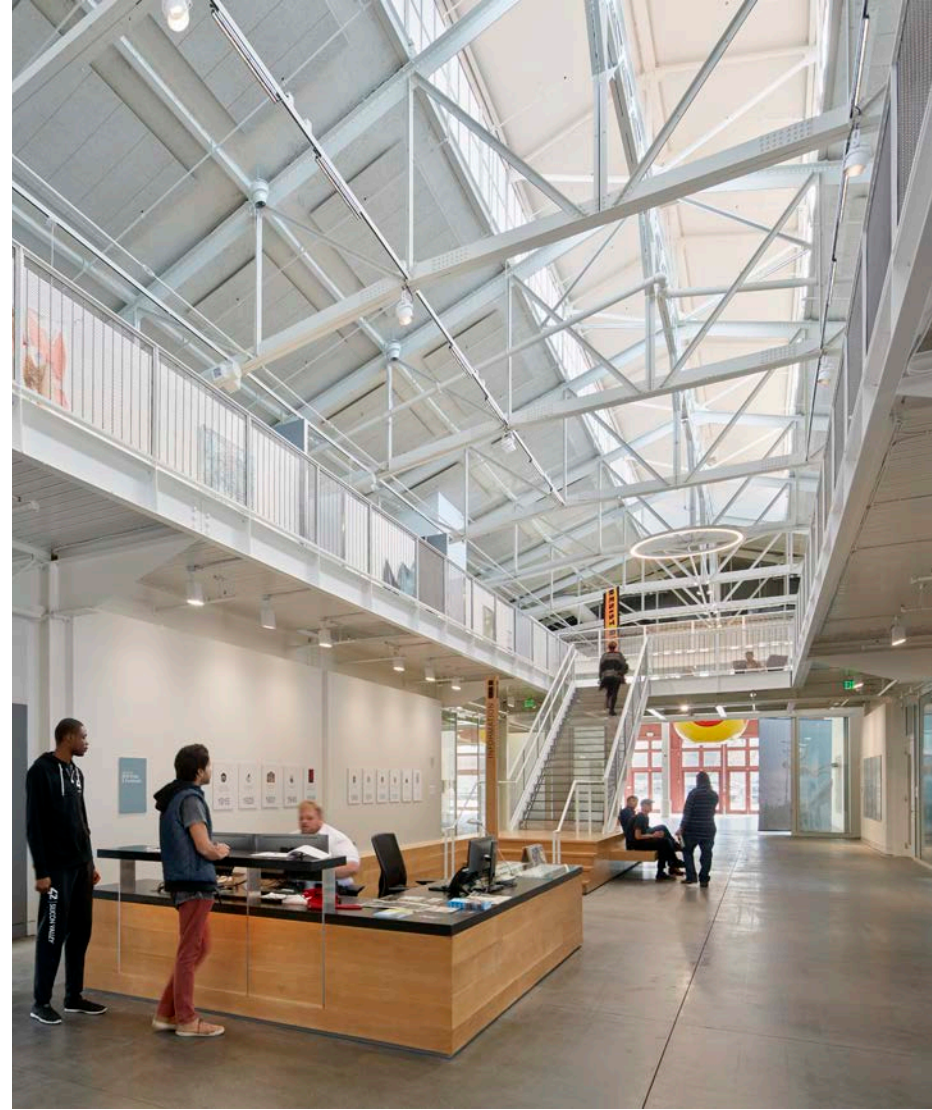
HERZ RECREATION CENTER



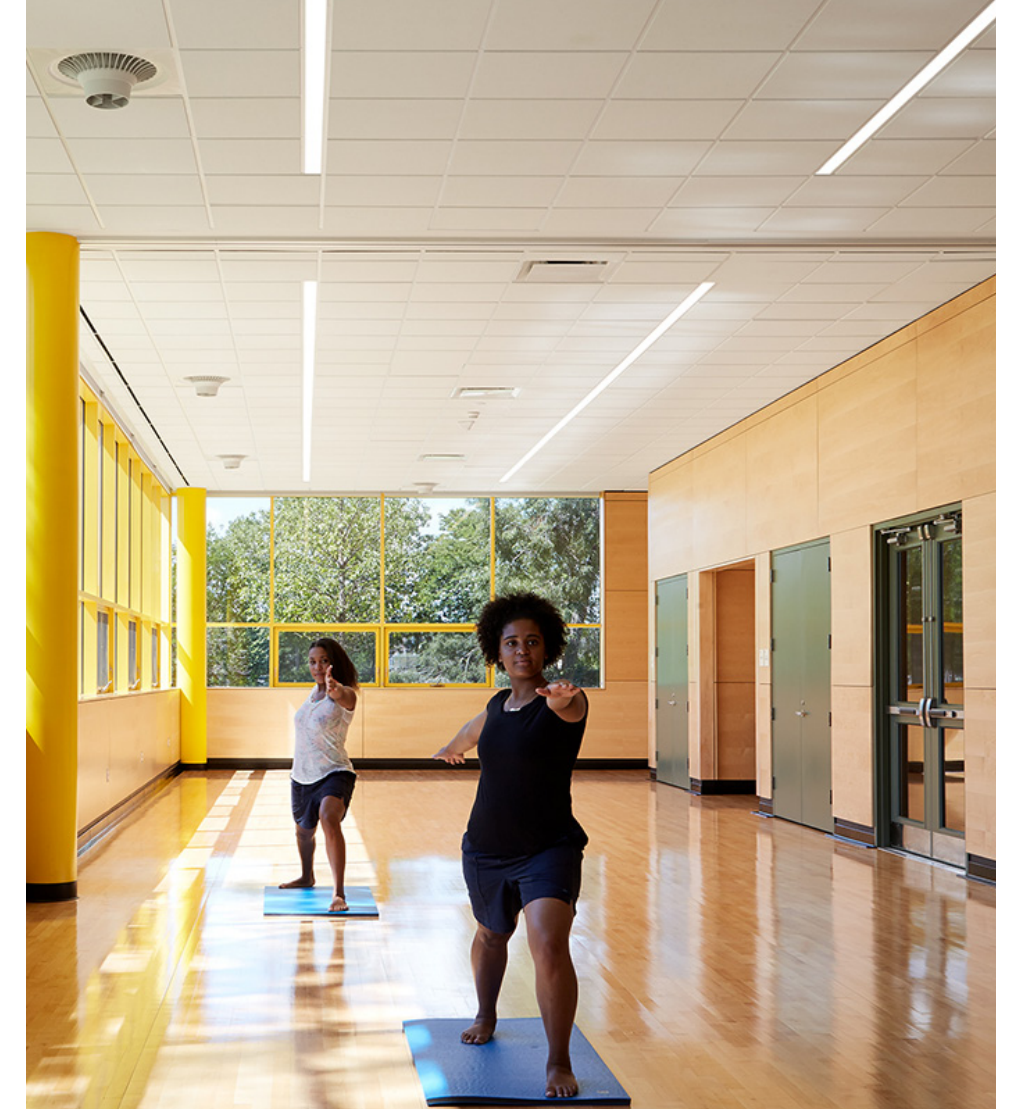
WHAT HAPPENS INSIDE



INDOOR GYM



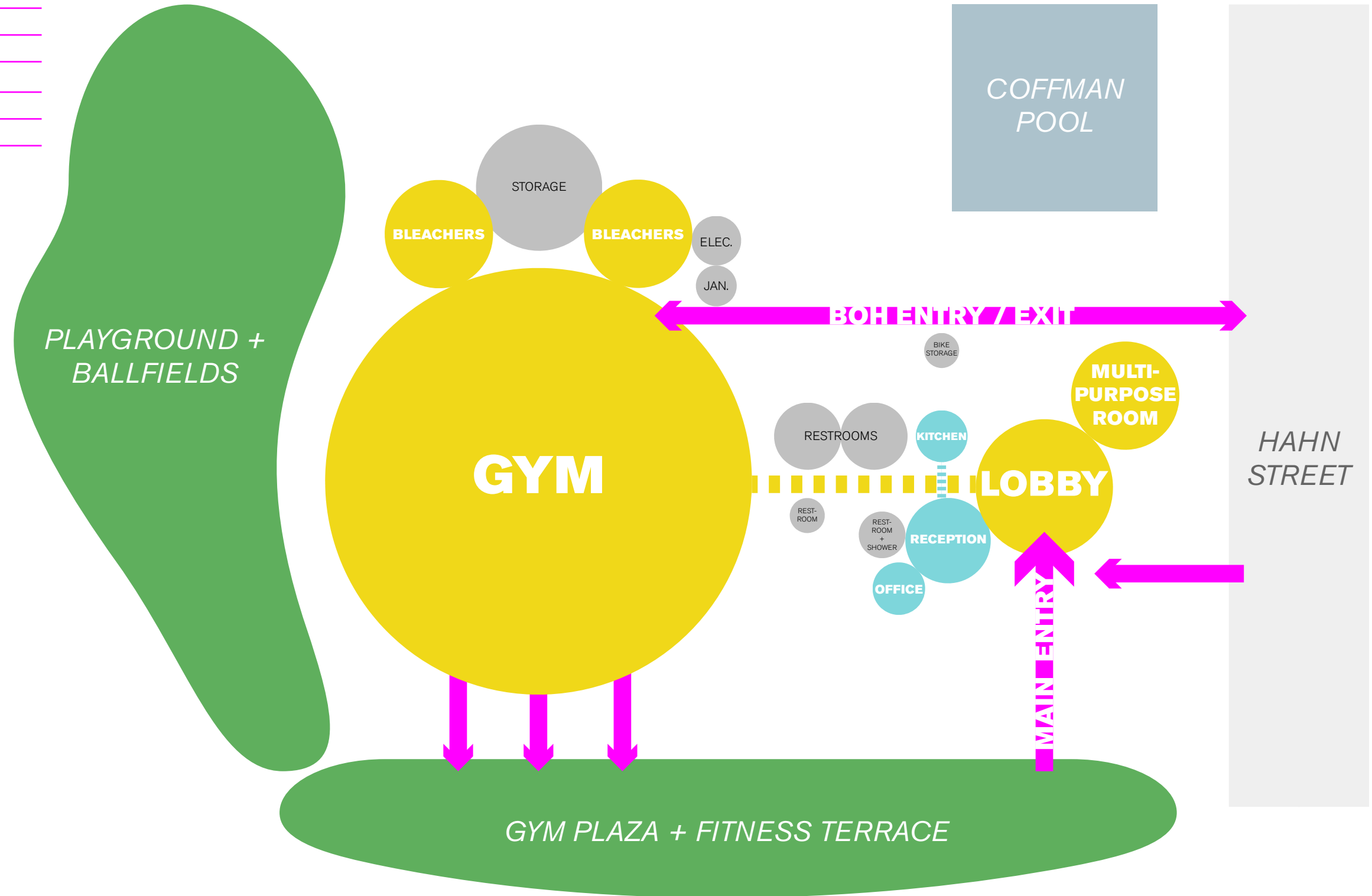
INVITING SPACIOUS LOBBY



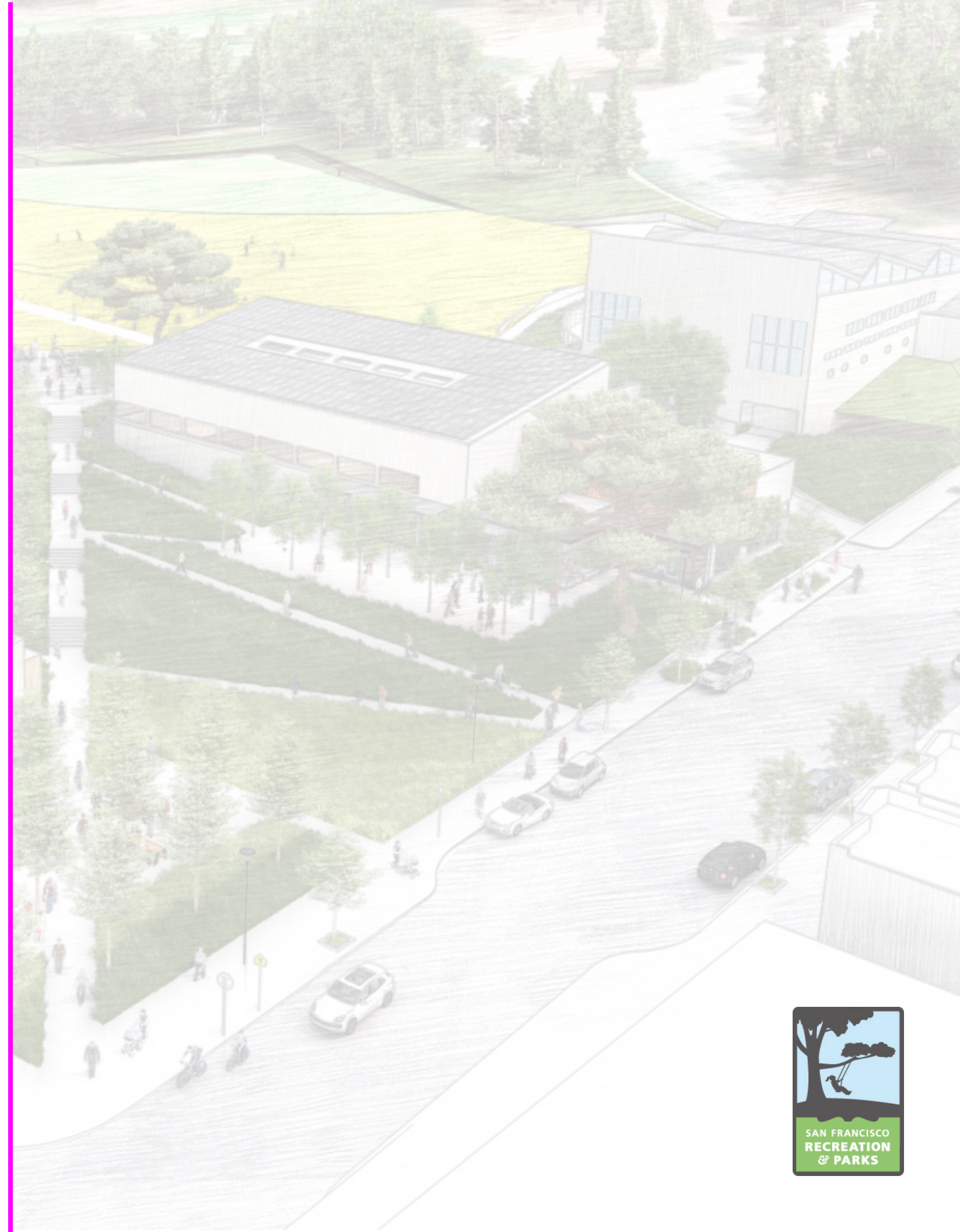
MULTIPURPOSE SPACE

PROGRAM ADJACENCIES

TOTAL GROSS SF	11,887
GYM	8,443
LOBBY	777
MULTI-PURPOSE ROOM	481
RECEPTION	302
OFFICE	114
KITCHEN	108
SUPPORT/BOH	1,295



04 PRECEDENT IMAGES



PRECEDENT

PALEGA RECREATION CENTER ■ SAN FRANCISCO, CA ■ MARK CAVAGNERO ASSOCIATES



LEDDY MAYTUM STACY ARCHITECTS



ANDREA COCHRAN
LANDSCAPE ARCHITECTURE
2325 Third Street #210
San Francisco CA 94107
415.503.0060



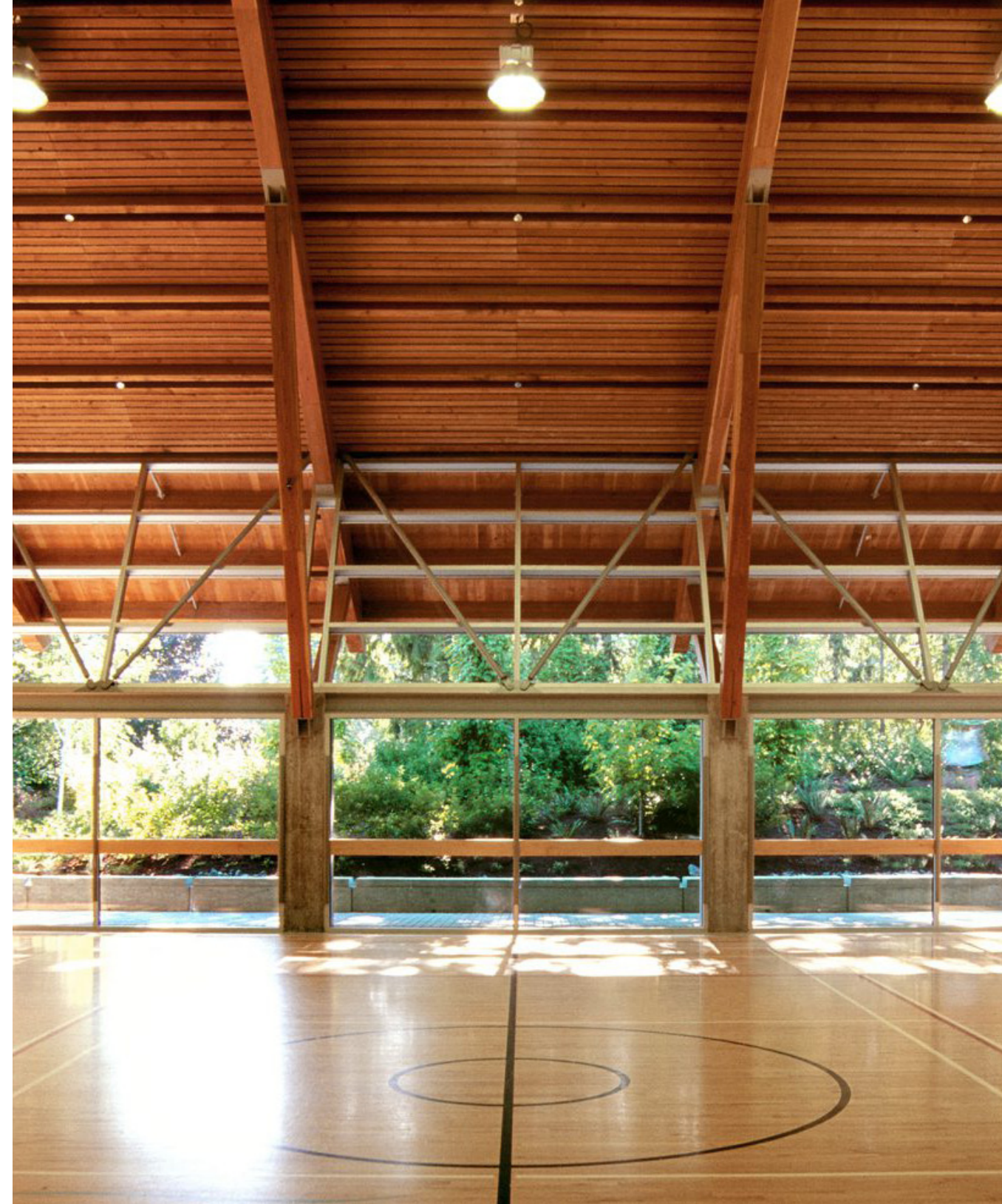
PRECEDENT

GLEN CANYON RECREATION CENTER ■ SAN FRANCISCO, CA ■ SAN FRANCISCO PUBLIC WORKS



PRECEDENT

GLENEAGLES COMMUNITY CENTER ■ WEST VANCOUVER, CANADA ■ PATKAU ARCHITECTS



LEDDY MAYTUM STACY ARCHITECTS



ANDREA COCHRAN
LANDSCAPE ARCHITECTURE
2325 Third Street #210
San Francisco CA 94107
415.503.0060



PRECEDENT

KATZ FAMILY PAVILION ■ LOS ANGELES, CA ■ LEHRER ARCHITECTS LA



LEDDY MAYTUM STACY ARCHITECTS



ANDREA COCHRAN
LANDSCAPE ARCHITECTUR
2325 Third Street #210
San Francisco CA 94107
415.503.0060



PRECEDENTS

UCSF MISSION HALL ■ SAN FRANCISCO, CA ■ ACLA



THE GOODS LINE ■ SYDNEY, AUSTRALIA ■ ASPECT STUDIOS



LEDDY MAYTUM STACY ARCHITECTS

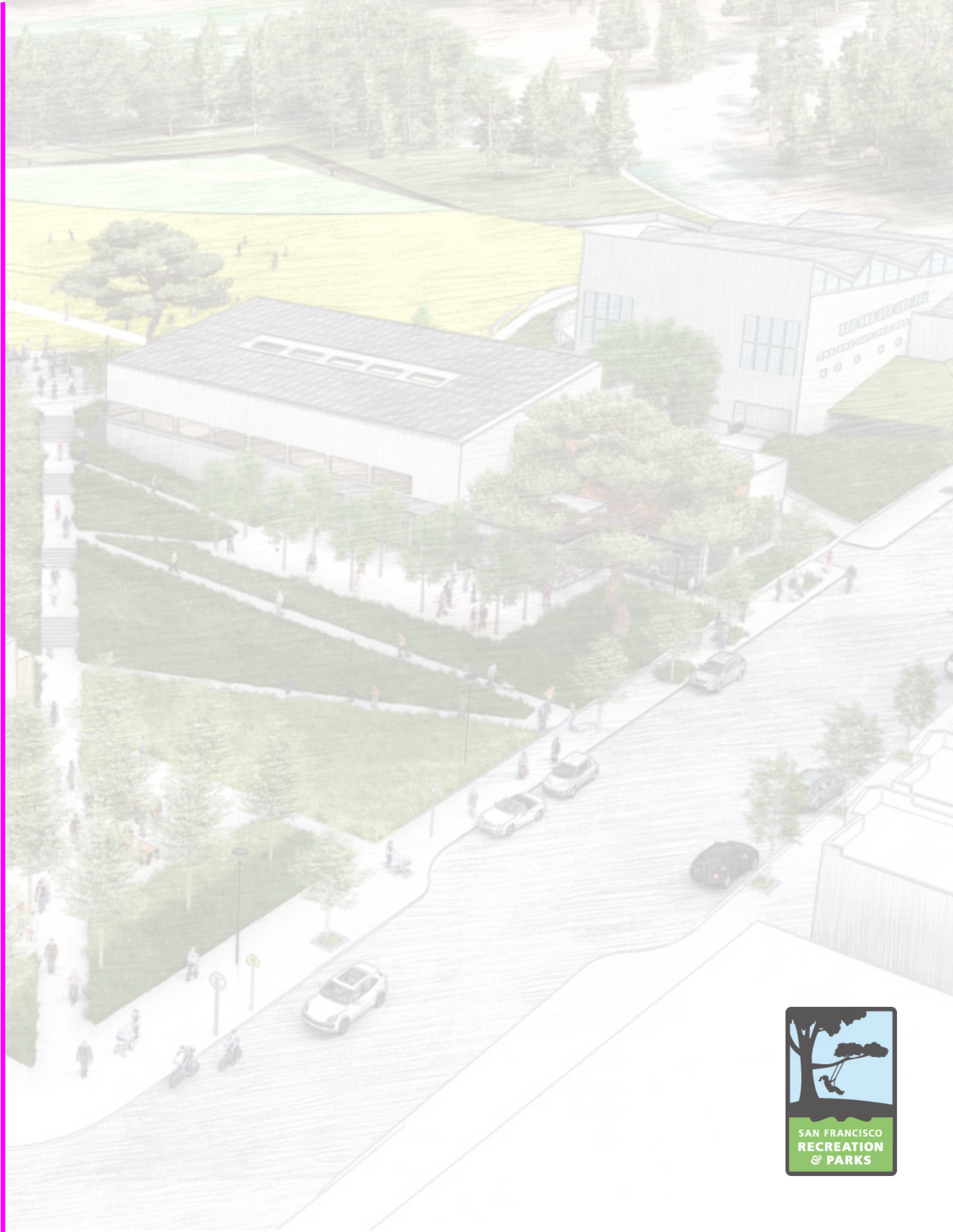


ANDREA COCHRAN
LANDSCAPE ARCHITECTURE
2325 Third Street #210
San Francisco CA 94107
415.503.0060

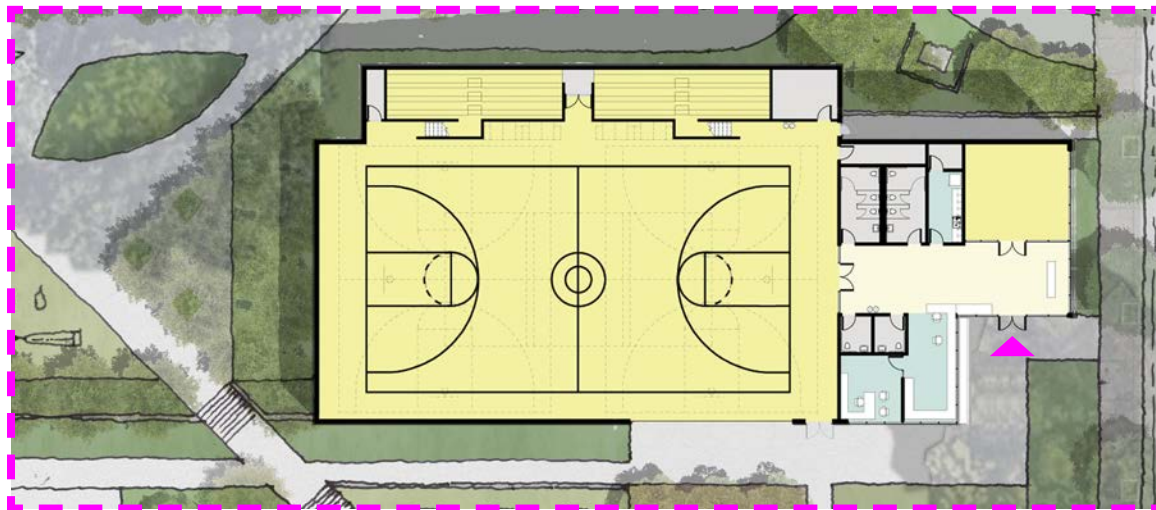
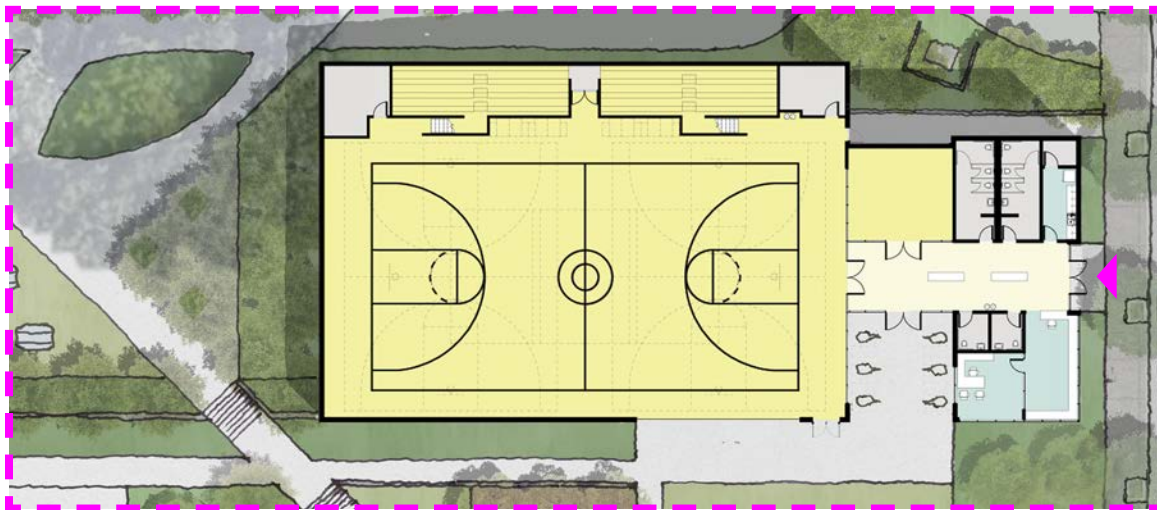
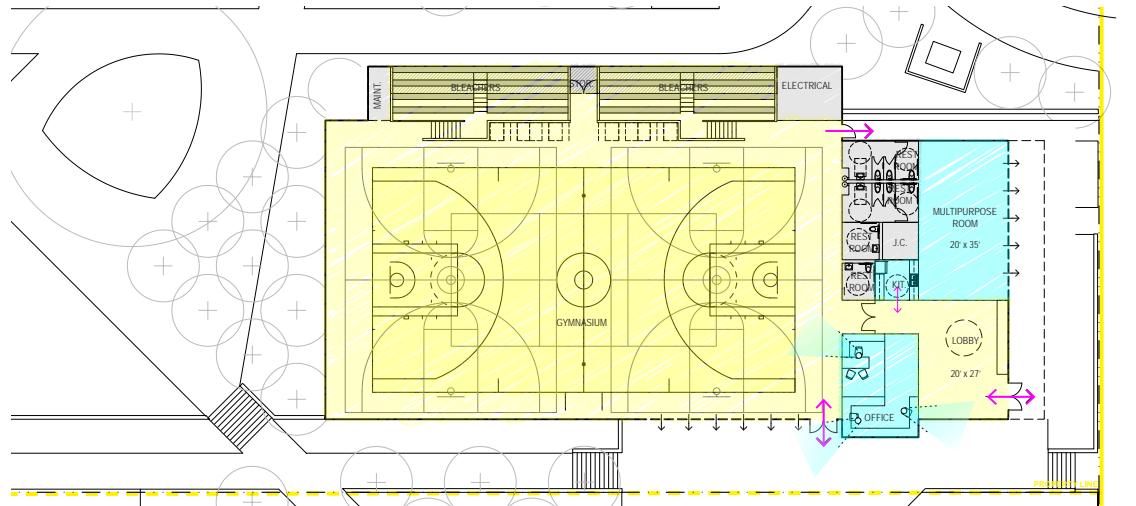
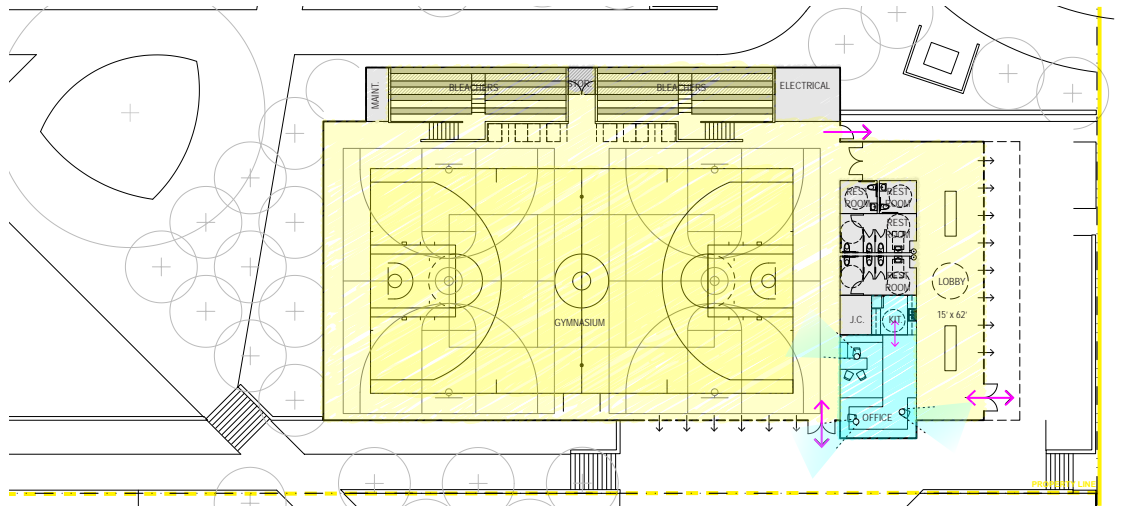
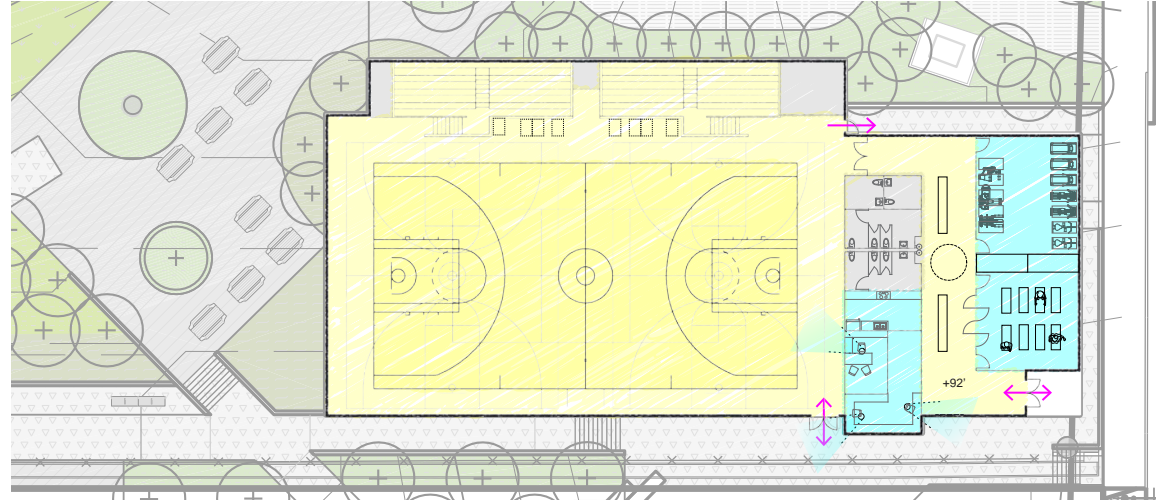
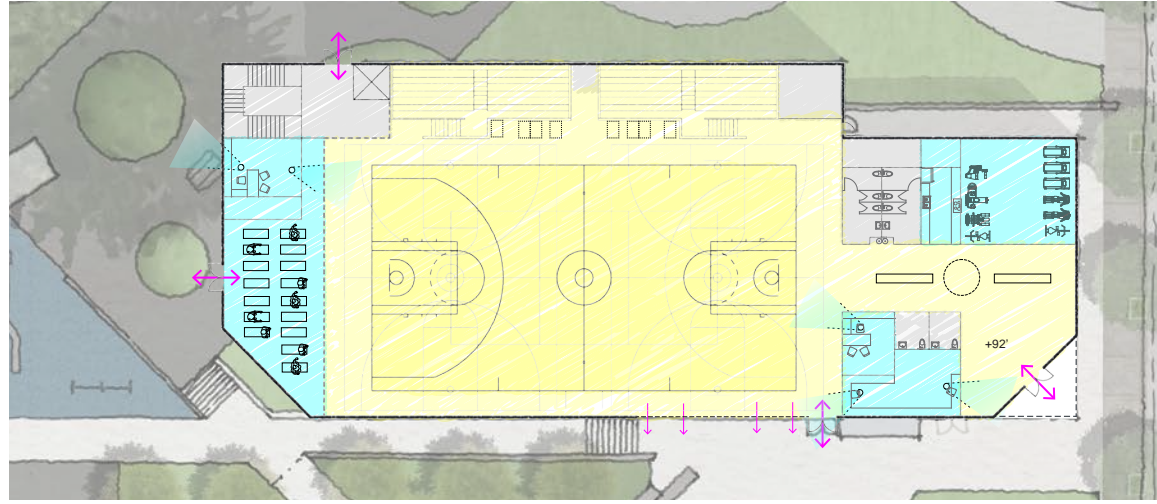


06

BUILDING DESIGN



PREVIOUS OPTIONS REVIEWED



OPTION B FITNESS TERRACE | PRESENTED TO COMMUNITY JULY 18TH 2020

OPTION A FRONT PORCH | PRESENTED TO COMMUNITY JULY 18TH 2020

WHAT WE HEARD

FROM COMMUNITY MEETING HELD JULY 18TH 2020

Security is a top priority for the community, need to feel safe and comfortable accessing these facilities.

Concerns about too much glass - can frequently get broken into and a **safety** hazard

Desire for **covered outdoor space** for activities like tai-chi

Desire for spaces that promote **inter-generational mingling**

Multi-lingual signage all around to support the diverse community

Desire for indoor recreational equipment as well as outdoor to promote **activity + exercise**



PROJECT DISCUSSION



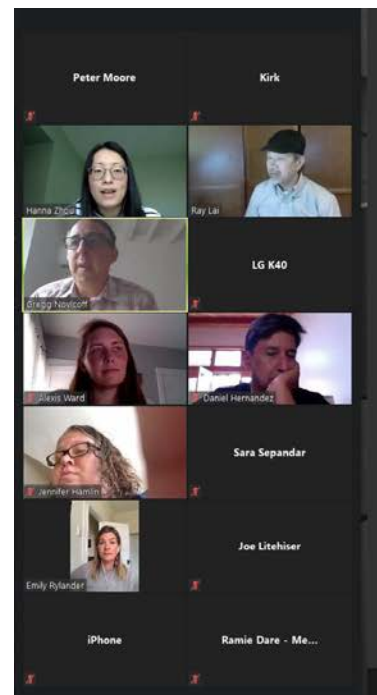
1. Front door faces south onto park
2. Flexible community gathering space
3. Upper fitness garden



1. Front door on Hahn Street
2. Fitness terrace with flex lawn
3. Upper picnic grove

LEDDY MAYTUM STACY ARCHITECTS AC LA

RELATED mercyHOUSING



PROJECT DISCUSSION

Poll Questions

1. Which Recreation Center plan do you prefer?
 - a. Front Porch
 - b. Fitness Terrace
2. What outdoor amenities do you prefer? Check the 3 that you like best.
 - a. Exercise equipment
 - b. Picnic Tables
 - c. Grove of trees
 - d. Ping pong table
 - e. Flexible Space
 - f. Lawn
 - g. Space for event tents
3. What types of outdoor fitness equipment should be included? Please check what should be included.
 - a. Weight-lifting equipment
 - b. Cardio equipment
 - c. Circuit training
 - d. Room to stretch

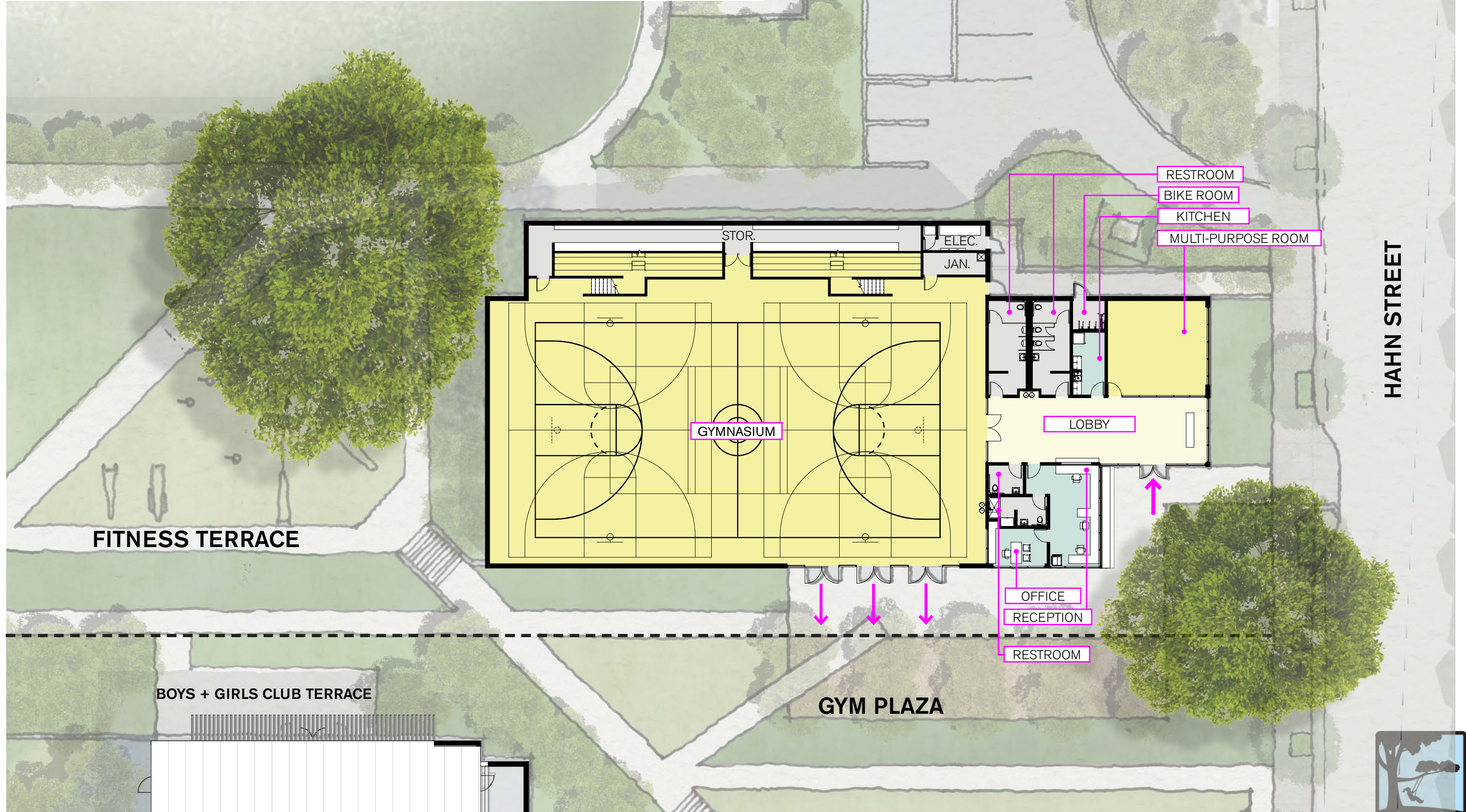


LEDDY MAYTUM STACY ARCHITECTS AC LA

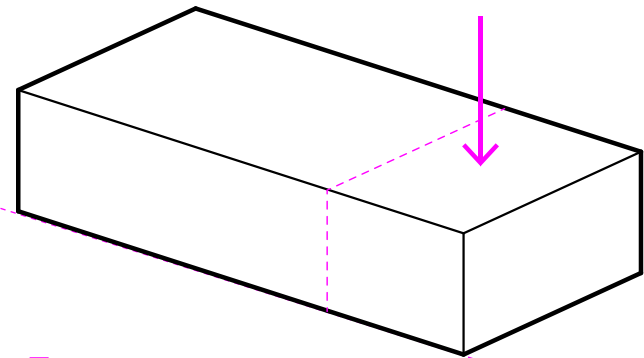
RELATED mercyHOUSING

CURRENT PLAN

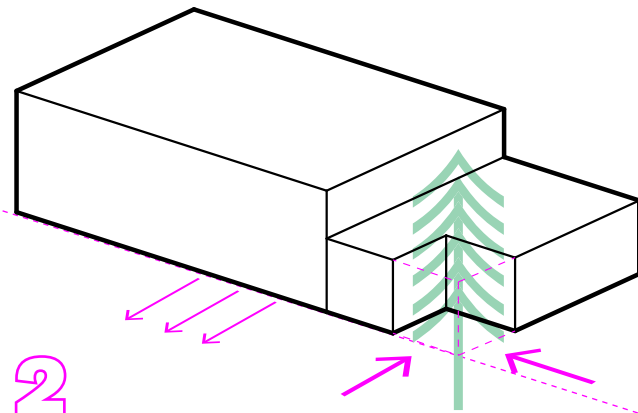
COMMUNITY PREFERRED OPTION - FRONT PORCH - 11,887 SF



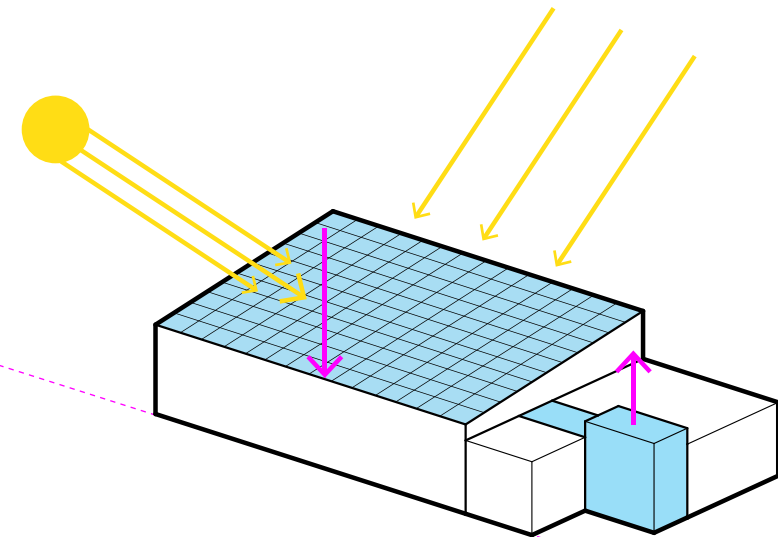
MASSING CONCEPT DIAGRAM



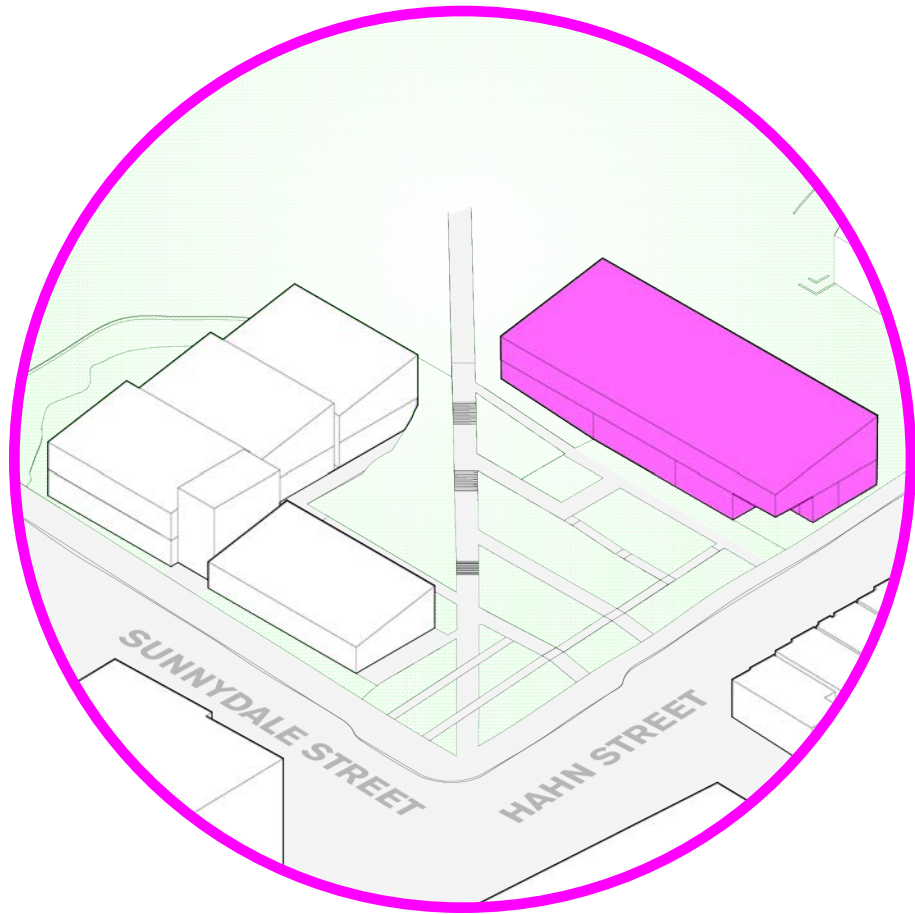
1
PROGRAM VOLUME



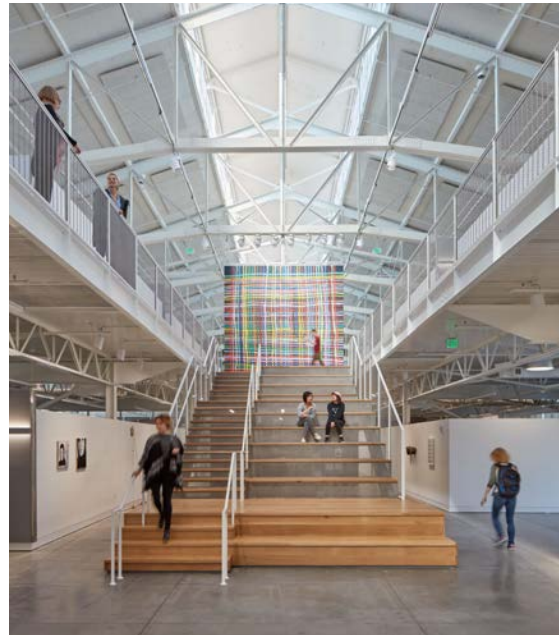
2
MASSING RESPONSE
TO SURROUNDING
NEIGHBORHOOD, COMMUNITY
PLAZA, AND EXISTING TREE



3
ENERGY GENERATION,
DAYLIGHT, + BEACON



FRAMEWORK FOR DESIGN EXCELLENCE



DESIGN FOR INTEGRATION
DESIGN FOR BEAUTY, DELIGHT, AND PERFORMANCE

The big idea behind the project. A great design concept serves the public and improves the world.

POSSIBLE CONSIDERATIONS:

- Central Design Concept
- Beauty and Delight
- Integrated Process

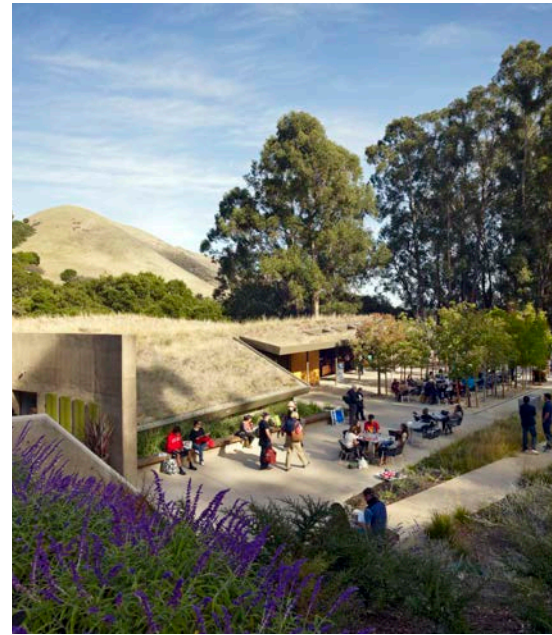


DESIGN FOR COMMUNITY
DESIGN FOR ENGAGEMENT

Architecture exists in context. Good design is inextricably tied to the wellness of communities.

POSSIBLE CONSIDERATIONS:

- Walkability / Human Scale / Alternative Transportation
- Community Engagement & Buy-In
- Social Equity



DESIGN FOR ECOLOGY

Good design protects and benefits nature ecosystems and habitat in the presence of human development.

POSSIBLE CONSIDERATIONS:

- Landscape
- Dark skies
- Bird Friendly
- Site acoustics

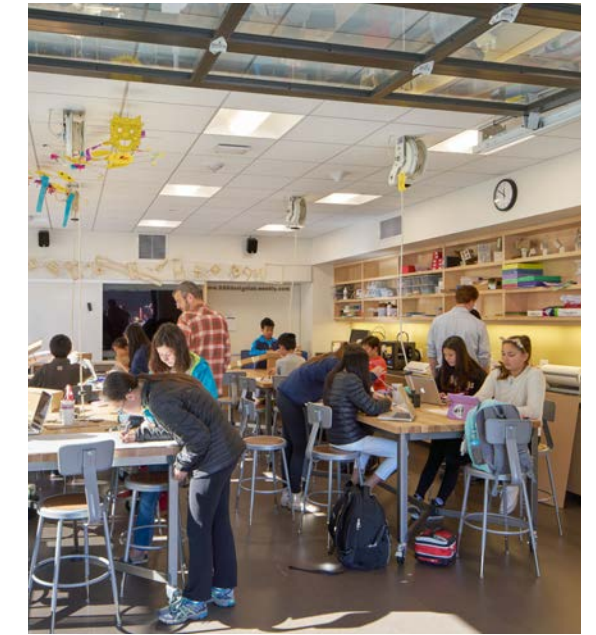


DESIGN FOR WATER

Good design conserves and improves the quality of water as a precious resource.

POSSIBLE CONSIDERATIONS:

- Indoor Water Efficiency
- Outdoor Water Use Reduction
- Process Water Reuse
- Capture/Reuse of Greywater and/or Blackwater
- Rainwater/Stormwater Use and Management
- Net Zero Water Building (NZWB)



DESIGN FOR ECONOMY

Providing abundance while living within our means is a fundamental challenge of design.

POSSIBLE CONSIDERATIONS:

- Building Size
- Material Use
- Operational Requirements
- Financing and Incentives
- Community links

FRAMEWORK FOR DESIGN EXCELLENCE



DESIGN FOR ENERGY

Good design conserves energy while improving building performance, function, comfort, and enjoyment.

POSSIBLE CONSIDERATIONS:

- Energy Benchmarking and Goal Setting
- Passive Design Features / Climate Responsive Design
- Energy Modeling
- On-Site Renewables (Solar, Wind)
- Net Zero Energy Building (NZEB) / Net Zero Carbon Building (NZCB)
- Commissioning



DESIGN FOR WELLNESS

Good design supports comfort, health, and wellness for the people who inhabit or visit buildings.

POSSIBLE CONSIDERATIONS:

- Natural and Artificial Lighting
- Thermal Comfort
- Indoor Air Quality
- Happiness
- Biophilia / Connection to Nature
- Acoustics
- Food / Movement / Exercise



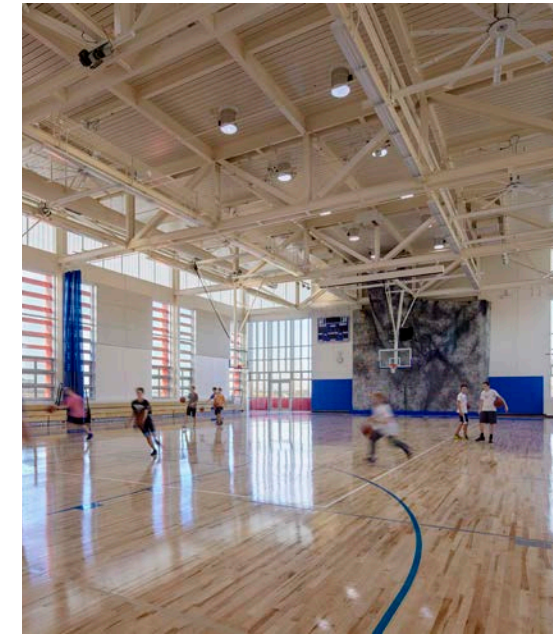
DESIGN FOR RESOURCES

DESIGN FOR EFFICIENCY

Good design requires the informed selection of materials and products to reduce environmental and health impacts while enhancing building performance and delight.

POSSIBLE CONSIDERATIONS:

- Safer Material Selection
- Material Sourcing
- Embodied Carbon



DESIGN FOR CHANGE

DESIGN FOR FLEXIBILITY AND RESILIENCE

Reuse, adaptability, and resilience are essential elements of good design, which seeks to maintain and enhance usability, functionality, and value over time.

POSSIBLE CONSIDERATIONS:

- Flexibility and Future Adaptability
- Risk Assessment
- Resilience
- Passive Survivability



DESIGN FOR DISCOVERY

DESIGN FOR FUTURE KNOWLEDGE SHARING

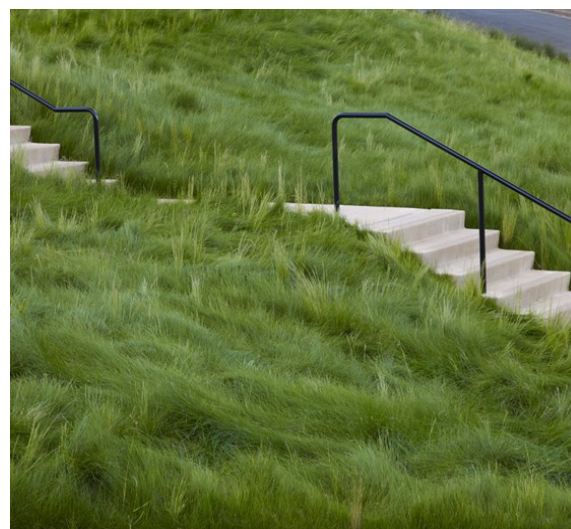
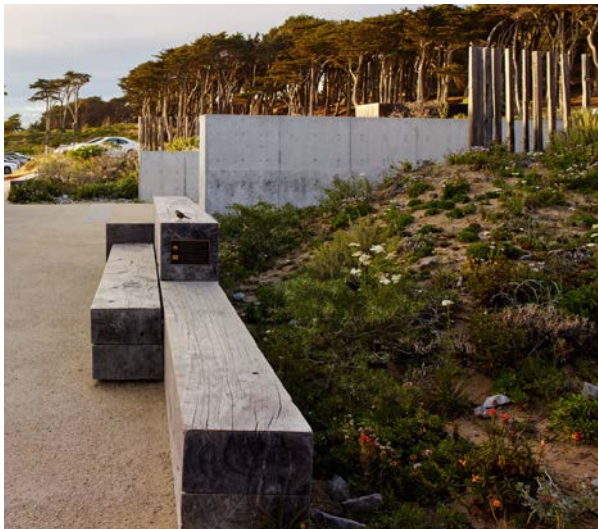
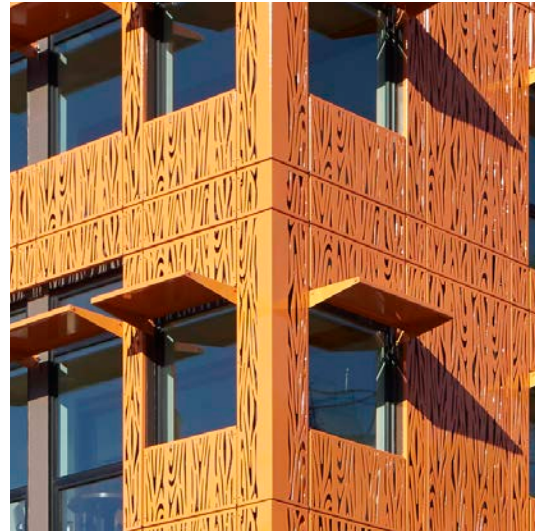
The design process doesn't end when construction is complete. Strategies and best practices evolve over time through documented performance and shared knowledge of lessons learned.

POSSIBLE CONSIDERATIONS:

- Post Occupancy Evaluation and Engagement
- Relationships / Graphic signage / Training
- Sharing and lessons learned
- Discovery that influences behavior

MATERIALS

LOOK + FEEL



LEDDY MAYTUM STACY ARCHITECTS



ANDREA COCHRAN
LANDSCAPE ARCHITECTUR
2325 Third Street #210
San Francisco CA 94107
415.503.0060



CONCEPT DESIGN PERSPECTIVE

VIEW OF HERZ RECREATION CENTER FROM HAHN STREET



CONCEPT DESIGN PERSPECTIVE

AERIAL VIEW FROM LOOK-OUT POINT TOWARDS SUNNYDALE + HAHN



LEDDY MAYTUM STACY ARCHITECTS



ANDREA COCHRAN
LANDSCAPE ARCHITECTURE
2325 Third Street #210
San Francisco CA 94107
415.503.0060



CONCEPT DESIGN PERSPECTIVE

AERIAL VIEW FROM SUNNYDALE + HAHN TOWARDS McCLAREN PARK

