

# HERZ PLAYGROUND AND RECREATION CENTER

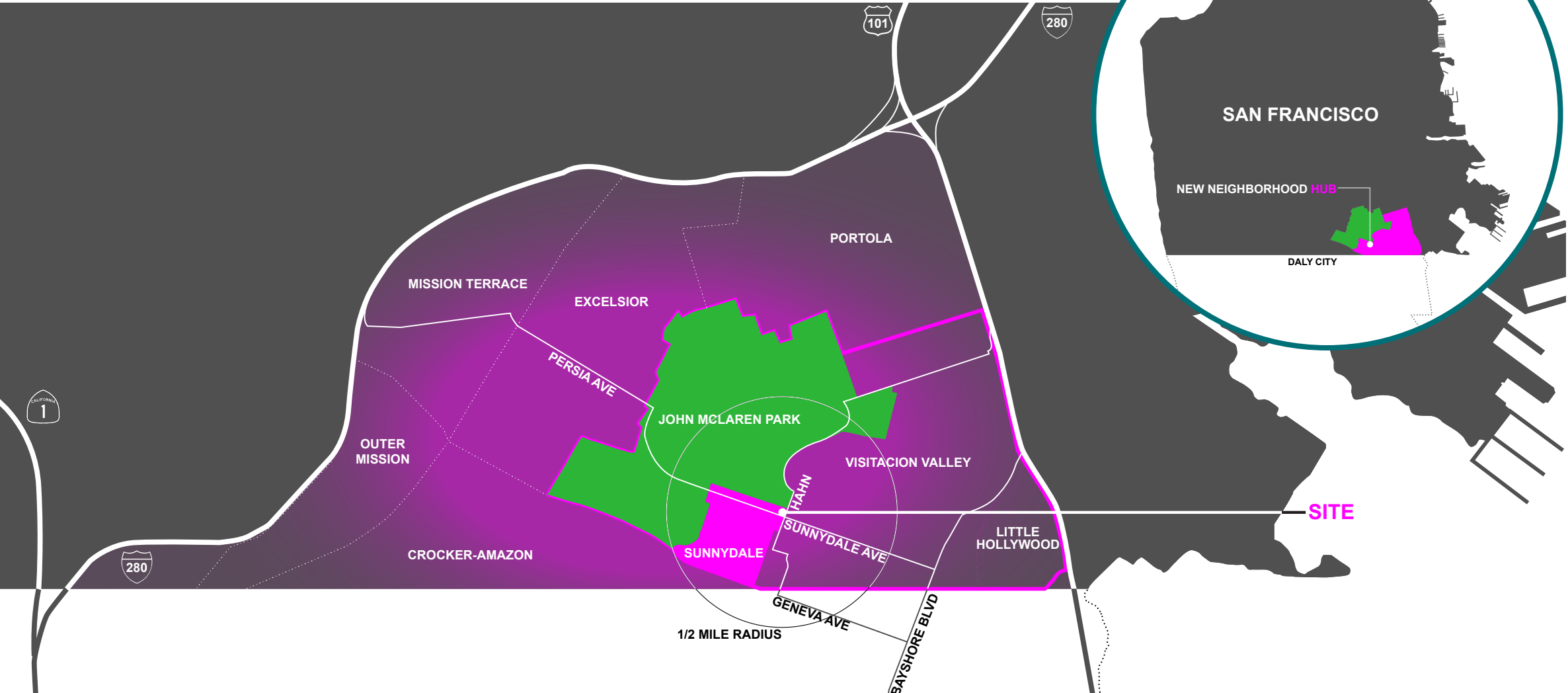
CIVIC DESIGN REVIEW | SCHEMATIC DESIGN

FEBRUARY 8, 2021 | 1:00 PM - 3:00 PM

*A partnership of San Francisco Recreation and Parks Department, Mercy Housing, and Related CA*



# PROJECT LOCATION: 160 HAHN STREET





# VISION STATEMENT



EXISTING AERIAL VIEW LOOKING WEST

## THE "RECREATION CENTER" SITE



MASTER PLAN VIEW LOOKING WEST

**An inclusive, safe, friendly, family and youth focused place for neighborhood residents and visitors.**

**Active** with neighborhood services and recreational facilities that will facilitate neighbor-to-neighbor connections, empathy and trust, and enable individuals to feel valued and empowered to make positive change.

The **heart** of the neighborhood and reflect the richness of a racially and ethnically diverse mixed-income community.



# EXISTING CONDITIONS: EXISTING STREET FRONTAGES



HAHN STREET LOOKING NORTH WEST TOWARDS MCLAREN PARK



HAHN STREET LOOKING SOUTH EAST TOWARDS VISITACION VALLEY





# EXISTING CONDITIONS: SITE PHOTOS



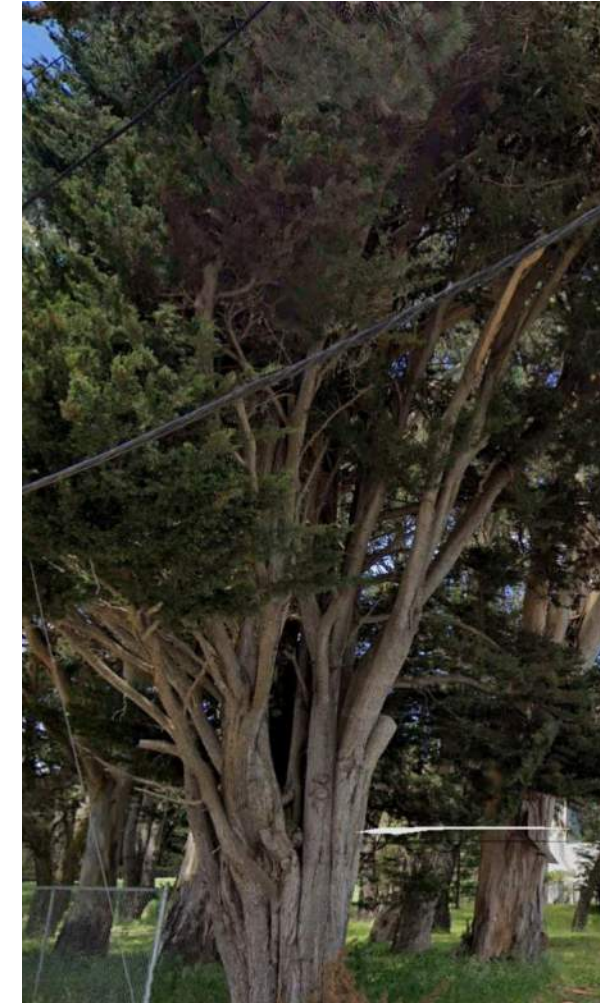
EXISTING MURAL AT CORNER OF HAHN STREET AND SUNNYDALE AVENUE



VIEW OF SITE FROM THE SOUTH SIDE OF COFFMAN POOL



EXISTING PATH WITHIN SITE BOUNDARY



EXISTING MONTEREY CYPRESS ALONG HAHN STREET; TO BE CONSERVED



# COMMUNITY ENGAGEMENT: CREATING A SHARED VISION



SECURITY IS A TOP PRIORITY

CONSIDER COVERED OUTDOOR SPACE FOR ACTIVITIES LIKE TAI-CHI

SPACES SUPPORT INTER-GENERATIONAL MINGLING

PROVIDE MULTI-LINGUAL SIGNAGE TO SUPPORT THE DIVERSE COMMUNITY

RECREATIONAL EQUIPMENT PROMOTES ACTIVITY AND EXERCISE



## KEY FEATURES

1. Front door faces south onto park
2. Flexible community space at the front door
3. Fitness garden at "The Lookout"



## KEY FEATURES

1. Front door on Hahn Street
2. Enclosed fitness terrace with flexible lawn
3. Picnic grove at "The Lookout"

2018 YOUTH LEADERSHIP TEAM  
AUGUST 2018

OPEN HOUSE  
SEPTEMBER 2018

2019 WORKSHOP #1  
DECEMBER 2018

WORKSHOP #2  
FEBRUARY 2019

VIS VALLEY FOCUS GROUP  
FEBRUARY 2019

FAMILY DAY  
MAY 2019

HERZ COMMUNITY MEETING 1  
JUNE 2019

2020

HERZ COMMUNITY MEETING 2  
JUNE 2020

STAKEHOLDER MEETINGS +  
FOCUS GROUPS  
AUGUST 2020

2021

2/3/21

RECREATION CENTER  
VIRTUAL COMMUNITY  
MEETING  
WINTER 2021





# GUIDING PRINCIPLES

ESTABLISH AN **ACTIVE** STREET IDENTITY AND **SITE PRESENCE**

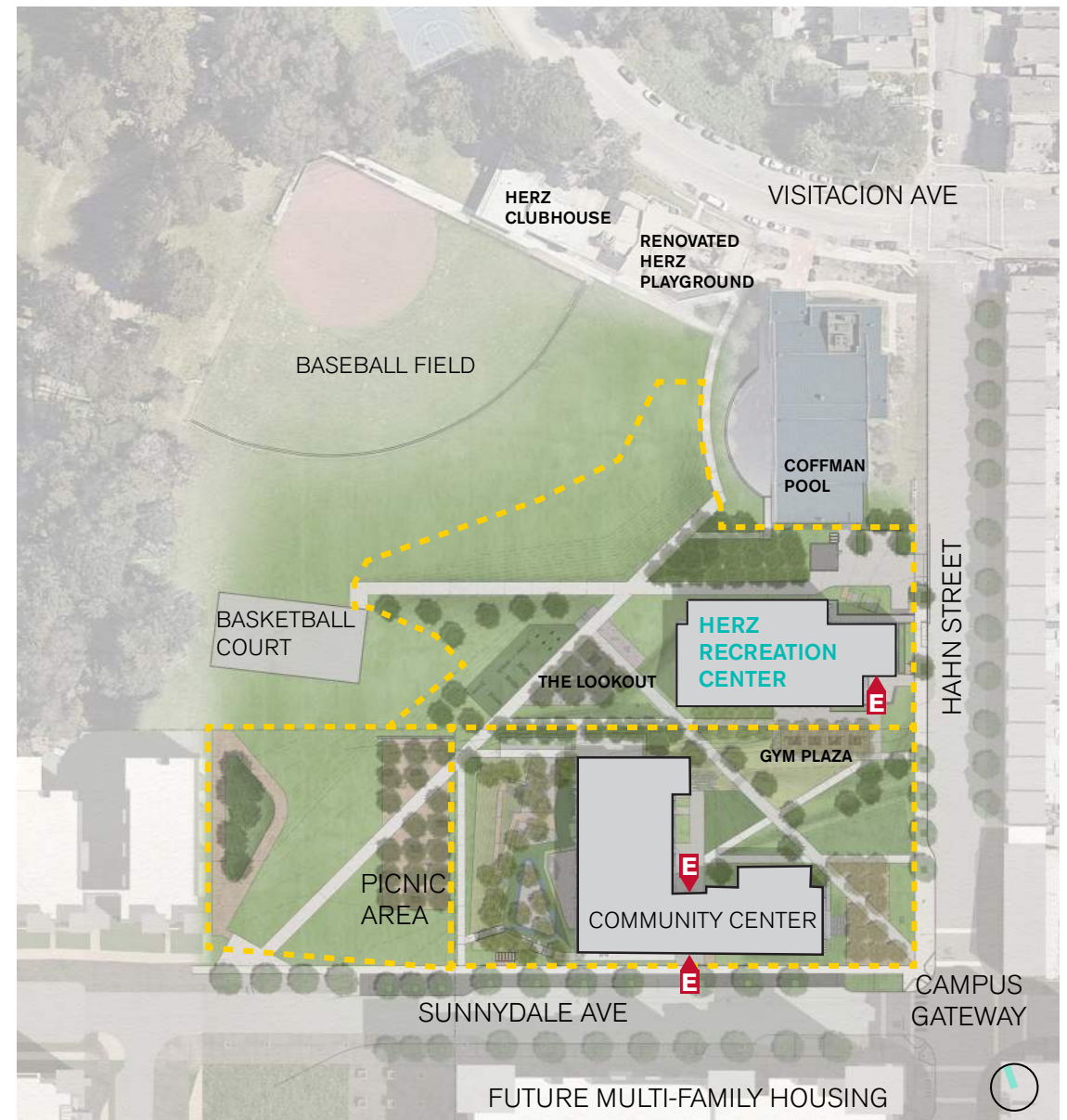
CREATE A **WELCOMING** INVITATION AND **GATEWAY** TO THE PARK

OFFER **SAFE** EXTERIOR SPACES WITH **INDOOR / OUTDOOR** CONNECTIONS

CONNECT TO **NATURE** WITH **DAYLIGHT, VIEWS AND ACCESS**

CREATE **SIMPLE** AND **FLEXIBLE** SOLUTIONS

PROMOTE A **HEALTHY, RESOURCE EFFICIENT AND REGENERATIVE** COMMUNITY CENTER & GYM



# WHAT WE HEARD: CIVIC DESIGN REVIEW MEETING

AUGUST 17, 2020

**01 ACTIVATE SPACE BETWEEN BUILDINGS TO INCLUDE PERFORMANCE AND LANDSCAPED, SLOPED SEATING.**

**02 CLARIFY THE LANDSCAPE DESIGN. DEFINE WHAT AREAS ARE USABLE LAWN, PLAY SPACE, RECREATION SPACE, AND PICNIC SPACE.**

**03 HOW DOES THE SPACE BETWEEN BUILDINGS FUNCTION?**

**04 THE PLANTING SHALL EXTEND THE WILDLIFE AND HABITAT OF MCLAREN PARK.**

**05 ENSURE THE EXTERIOR FITNESS EQUIPMENT IS FUNCTIONAL, COMFORTABLE AND AESTHETICALLY PLEASING.**

**LANDSCAPE DESIGN**

**BUILDING DESIGN**

**06 THE RECREATION CENTER ARCHITECTURE SHALL EMBRACE AND RELATE TO THE OTHER CAMPUS BUILDINGS.**

**07 THE DESIGN SHALL WELCOME VISITORS TO THE RECREATION CENTER.**

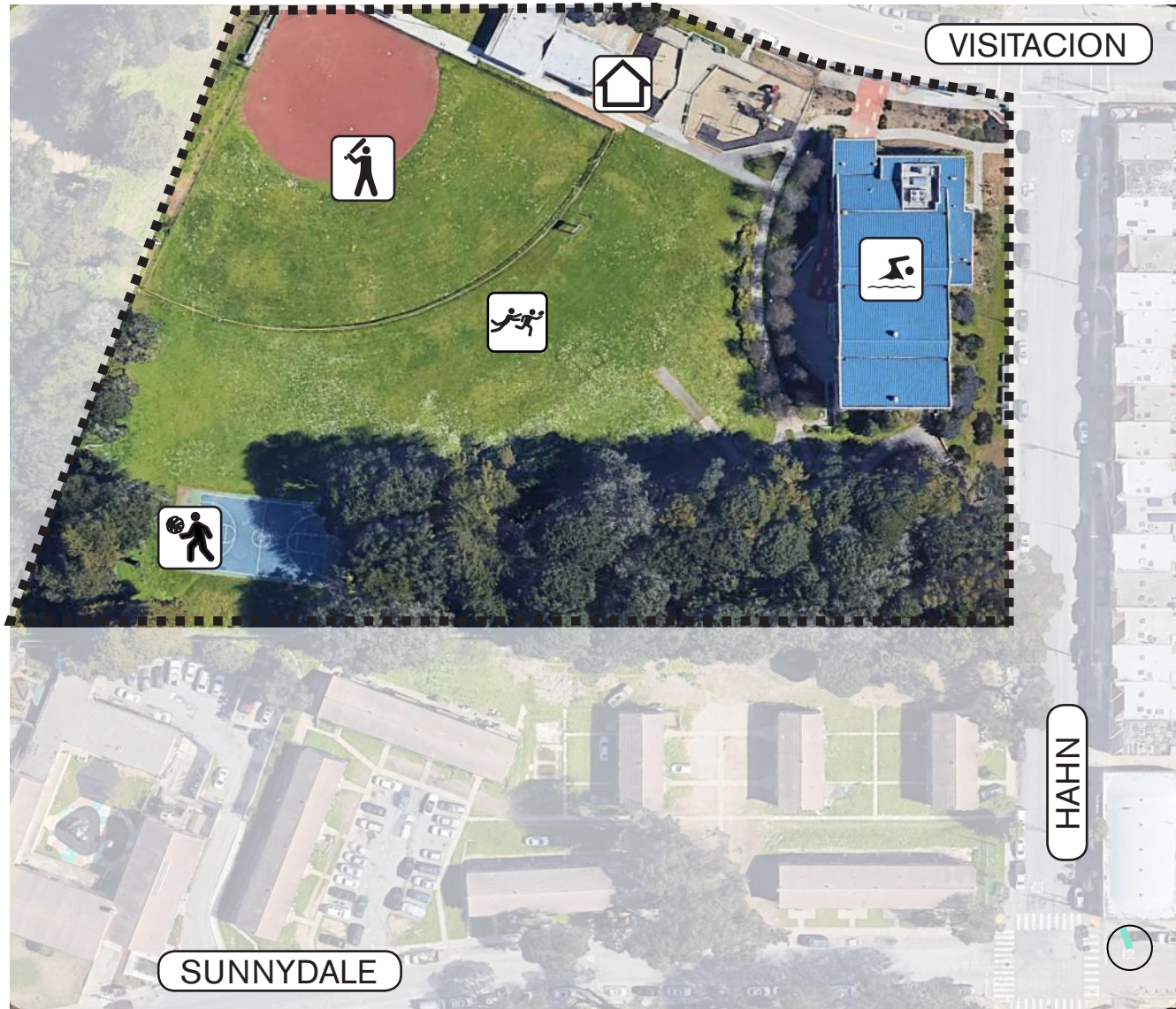
**08 EMPHASIZE THE AXIAL RELATIONSHIP BETWEEN CORNER GATEWAY AND MCLAREN PARK.**

**09 USE THE ART ENRICHMENT BUDGET TO REFLECT THE WELCOMING NATURE OF THE PROJECT.**





# EXISTING PARK AMENITIES



-  Baseball Field
-  Clubhouse
-  Swimming Pool
-  Large field
-  Basketball court



INVITING



ACTIVE



FAMILY-FRIENDLY



SAFE

## HOW WILL IT FEEL?

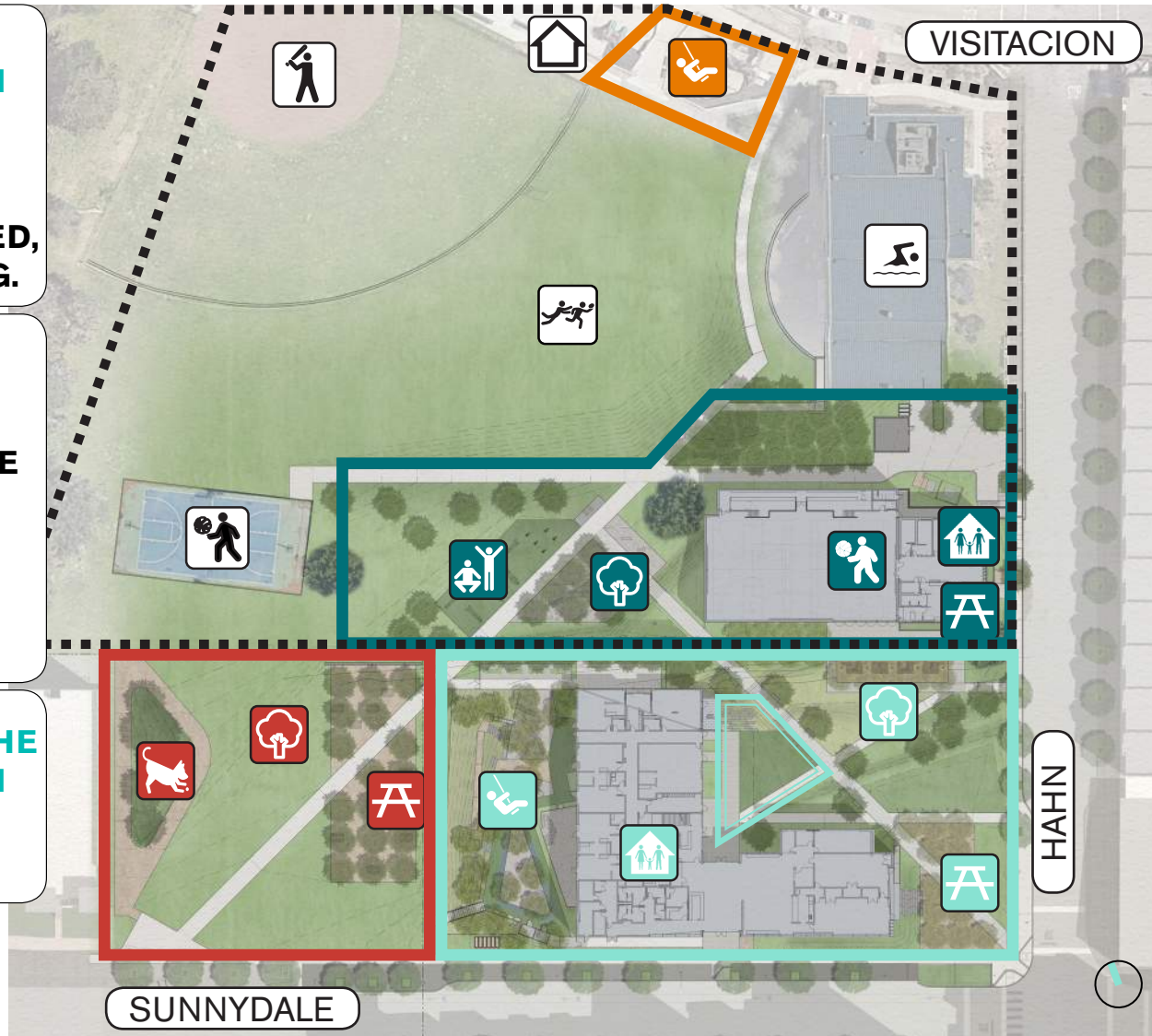















# GREATER HERZ PARK FUTURE AMENITIES

**01 ACTIVATE SPACE BETWEEN BUILDINGS TO INCLUDE PERFORMANCE AND LANDSCAPED, SLOPED SEATING.**





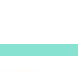

**02 CLARIFY THE LANDSCAPE DESIGN. DEFINE WHAT AREAS ARE USABLE LAWN, PLAY SPACE, RECREATION SPACE, AND PICNIC SPACE.**

**03 HOW DOES THE SPACE BETWEEN BUILDINGS FUNCTION?**



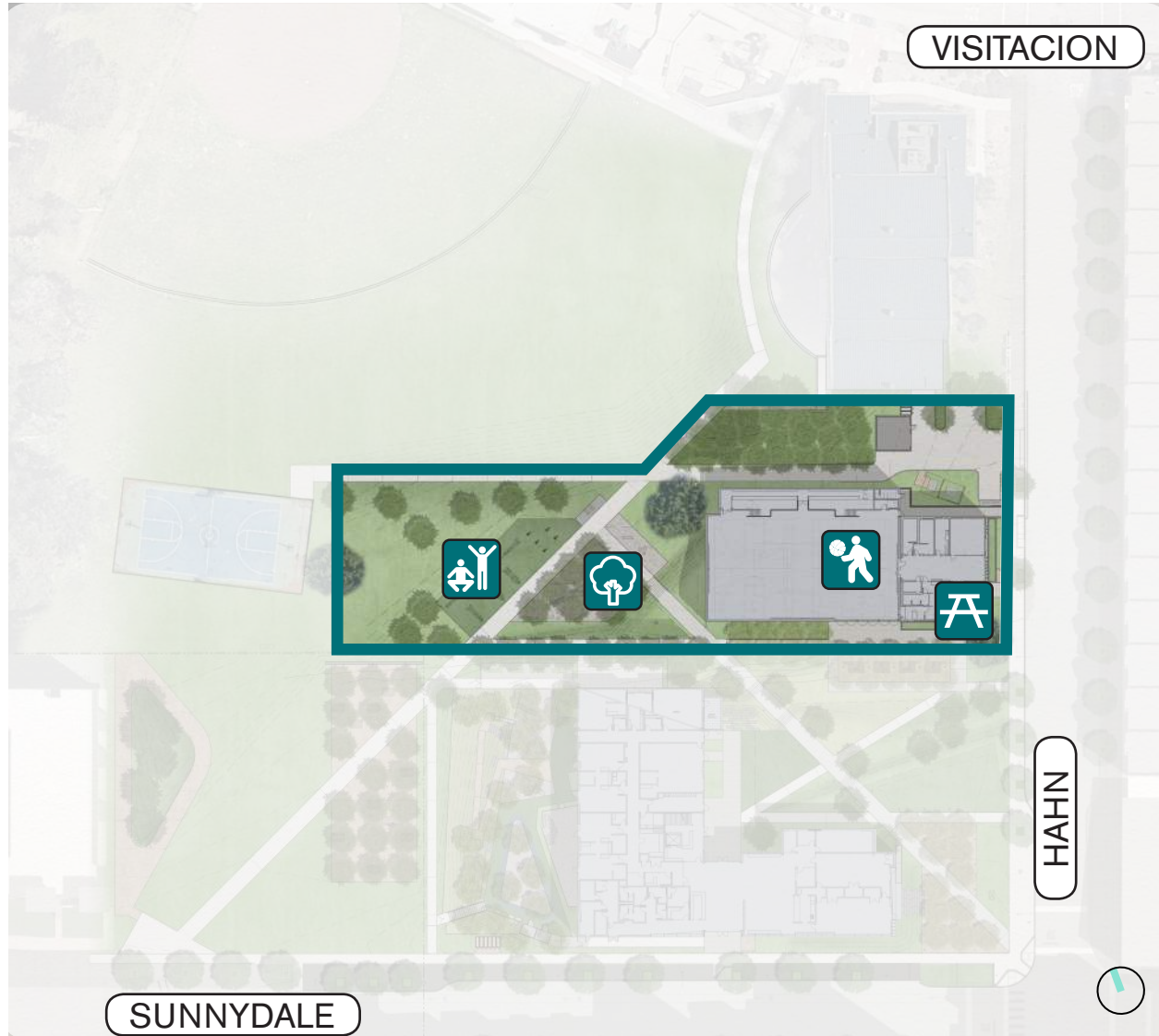
-   Baseball Field
-   Clubhouse
-   Swimming Pool
-   Large field
-   Renovated Playground
-   Recreation Center
-   Gym and Multipurpose Room
-   Outdoor fitness area
-   Nature exploration + picnic area
-   Community Center
-   Park Grove
-   Community Courtyard
-   Corner Plaza



-   Orchard Park
-   BBQ and picnic grove
-   Dog play area

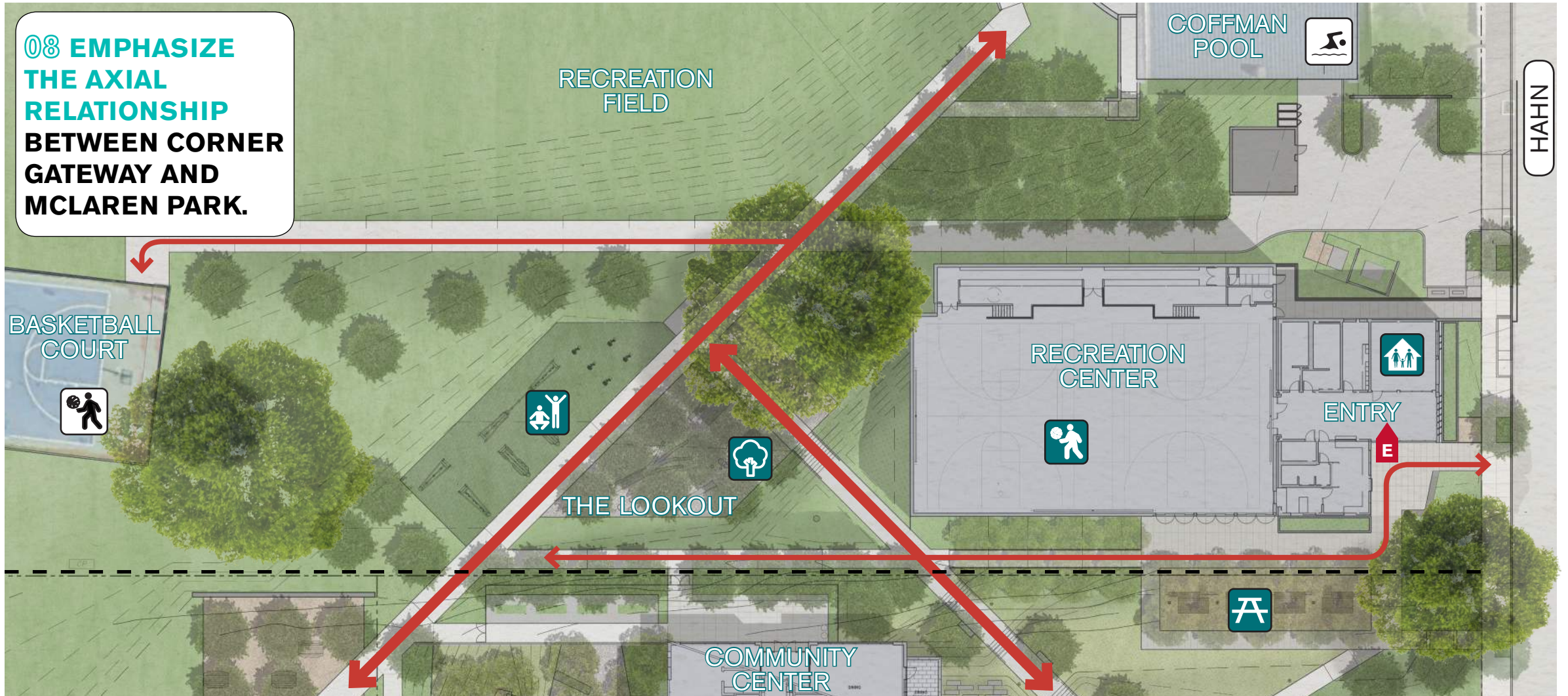


# TODAY'S DISCUSSION: RECREATION CENTER



Recreation Center  
Gym and Multipurpose Room  
Outdoor fitness area  
Nature exploration + picnic area

# SITE PLAN: AXIAL RELATIONSHIP





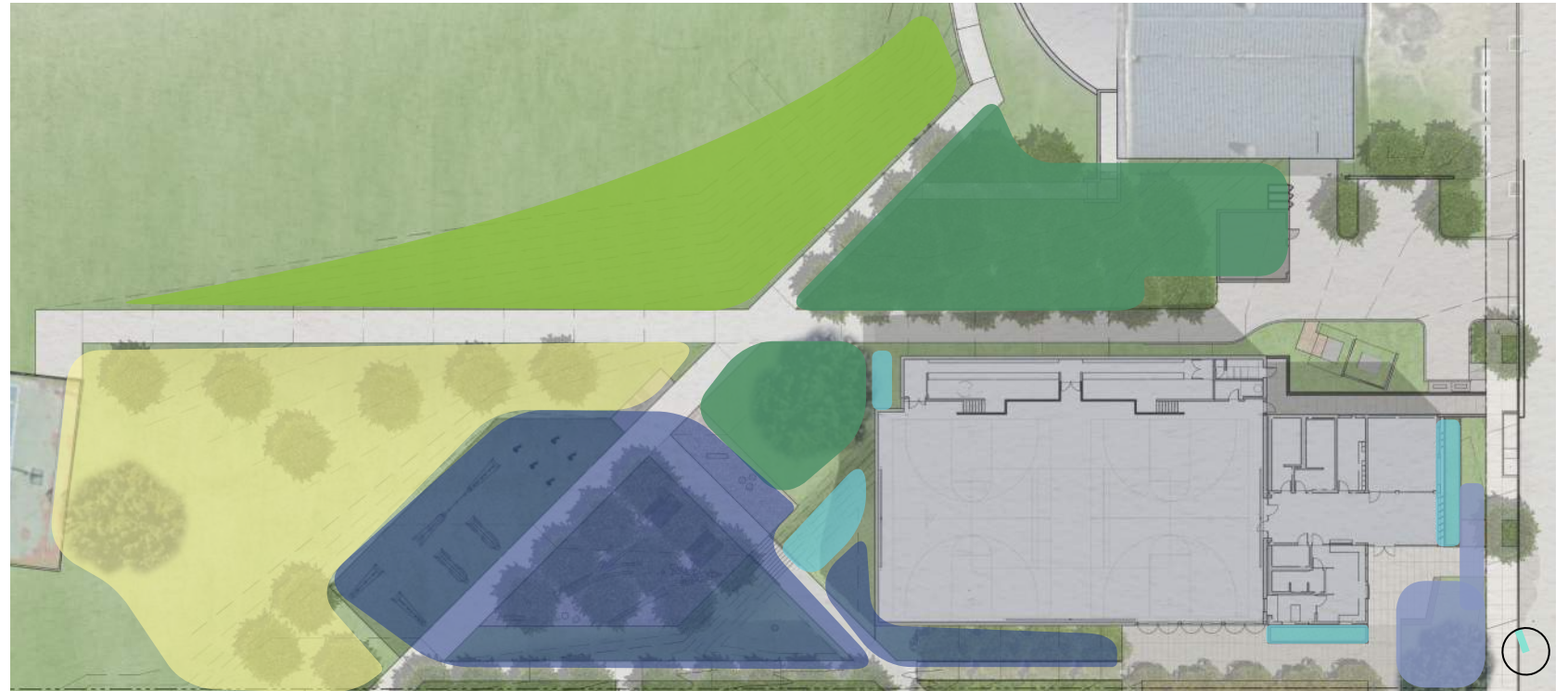
# PLANTING STRATEGY

**02 CLARIFY THE LANDSCAPE DESIGN. DEFINE WHAT AREAS ARE USABLE LAWN, PLAY SPACE, RECREATION SPACE, AND PICNIC SPACE.**

-  CIVIC EDGE
-  MEADOW GRASSLAND
-  NATIVE HILLSIDE
-  STORMWATER FILTRATION
-  ACTIVE PARK

## Goals:

- Provide usable areas for recreation
- Reduce water consumption
- Restore and connect to the wild habitat of McLaren Park
- Provide storm water filtration areas
- Coordinate planting plan with maintenance strategies





# PLANTING: GRASSES & SHRUBS

04 THE PLANTING SHALL EXTEND THE WILDLIFE AND HABITAT OF MCLAREN PARK.

## CIVIC EDGE



## MEADOW GRASSLAND



## NATIVE HILLSIDE



## STORMWATER FILTRATION



## ACTIVE PARK





# PLANTING: TREES

04 THE PLANTING SHALL EXTEND THE WILDLIFE AND HABITAT OF MCLAREN PARK.

MEADOW GRASSLAND



NATIVE HILLSIDE



STORMWATER FILTRATION



CIVIC EDGE



ELMS



EVERGREEN OAKS, OLIVES, PEPPER



BUCKEYES, REDBUDS, CYPRESS



ARBUTUS + TUPELO



# GYM PLAZA AND PICNIC TERRACE

**02 CLARIFY THE LANDSCAPE DESIGN. DEFINE WHAT AREUSABLE LAWN, PLAY SPACE, RECREATION SPACE, AND PICNIC SPACE.**

**03 HOW DOES THE SPACE BETWEEN BUILDINGS FUNCTION?**





# GYM PLAZA AND PICNIC TERRACE

02 CLARIFY THE LANDSCAPE DESIGN. DEFINE WHAT ARE USABLE LAWN, PLAY SPACE, RECREATION SPACE, AND PICNIC SPACE.

03 HOW DOES THE SPACE BETWEEN BUILDINGS FUNCTION?





# GYM PLAZA AND PICNIC TERRACE

**02 CLARIFY THE LANDSCAPE DESIGN. DEFINE WHAT ARE USABLE LAWN, PLAY SPACE, RECREATION SPACE, AND PICNIC SPACE.**

**03 HOW DOES THE SPACE BETWEEN BUILDINGS FUNCTION?**





# THE LOOKOUT





# NATURE EXPLORATION AREA



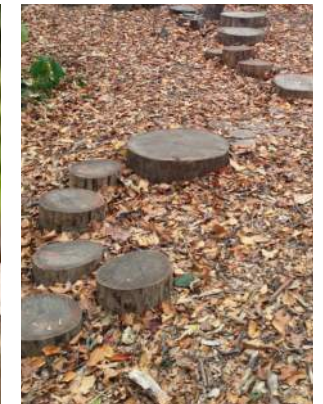
**02 CLARIFY THE LANDSCAPE DESIGN. DEFINE WHAT ARE USABLE LAWN, PLAY SPACE, RECREATION SPACE, AND PICNIC SPACE.**



# NATURE EXPLORATION AREA

## Features:

- Loose natural elements
- Beneficial risk elements
- Ecological elements
- Sensory and immersive experiences
- Site boundaries
- Welcoming signage





# FITNESS TERRACE

**05 ENSURE THE EXTERIOR FITNESS EQUIPMENT IS FUNCTIONAL, COMFORTABLE AND AESTHETICALLY PLEASING.**





# FITNESS TERRACE





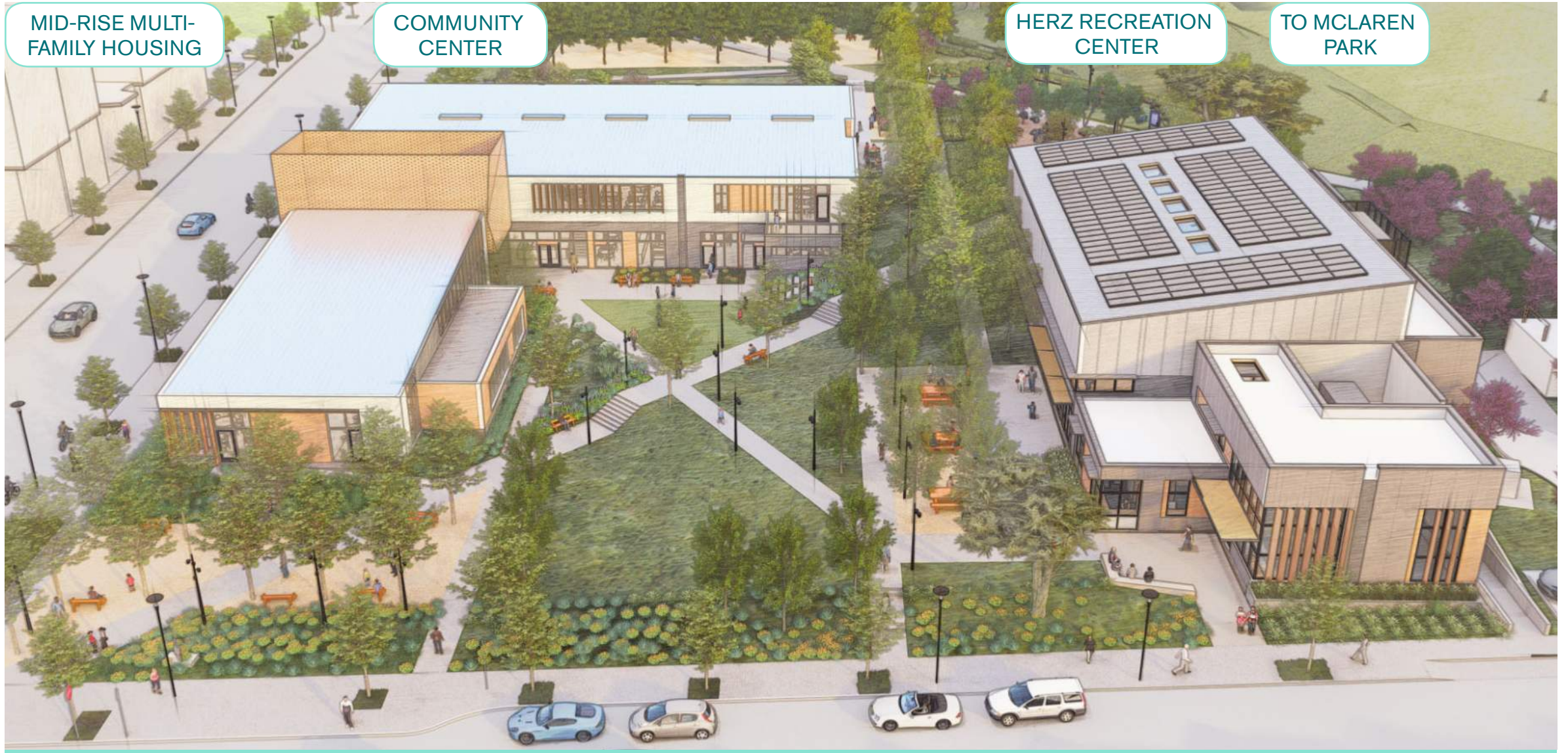
# CAMPUS AERIAL VIEW

08 EMPHASIZE THE AXIAL RELATIONSHIP BETWEEN CORNER GATEWAY AND MCLAREN PARK.





# CAMPUS AERIAL VIEW



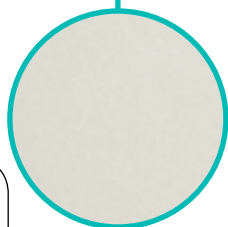
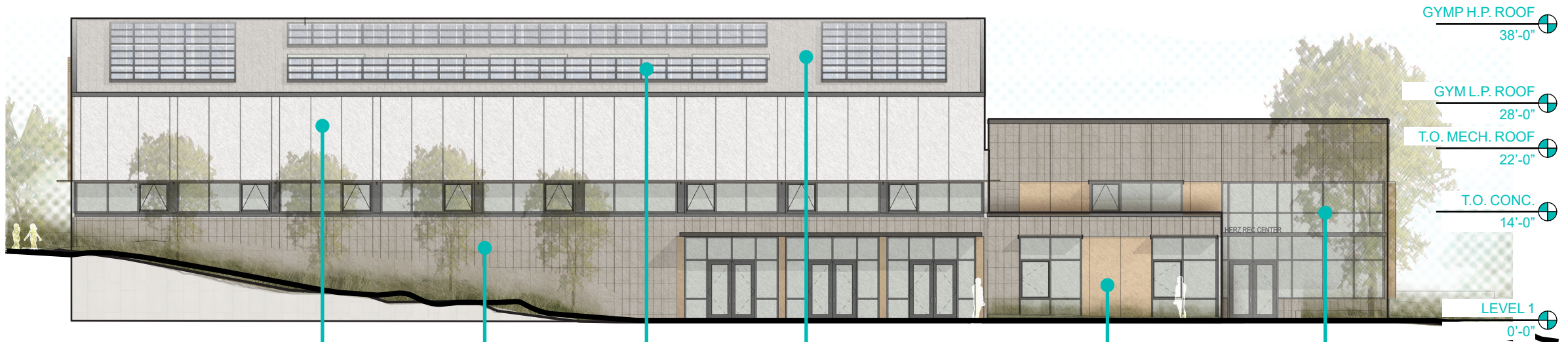


# “THE LOOKOUT” VIEW TOWARDS SUNNYDALE AVE + HAHN ST

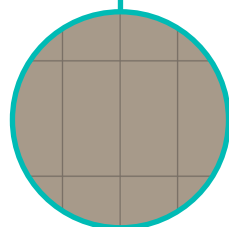




# EXTERIOR ELEVATIONS: MATERIAL PALETTE



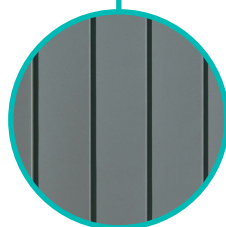
PAINTED STUCCO



TILE  
CROSSVILLE  
RETROACTIVE 2.0  
12x24  
ANTICO TAUPE



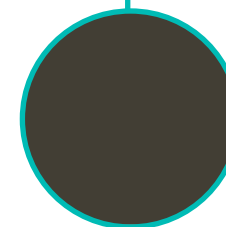
PHOTOVOLTAIC  
PANELS



STANDING  
SEAM  
METAL ROOF



COMPOSITE  
PANEL  
W/ WOOD  
VANEER  
PRODEMA  
PRODEX  
PALE



STOREFRONT  
KAWNEER  
PAINTED ALUMINUM  
KYNAR, 3-COAT  
DARK CHARCOAL

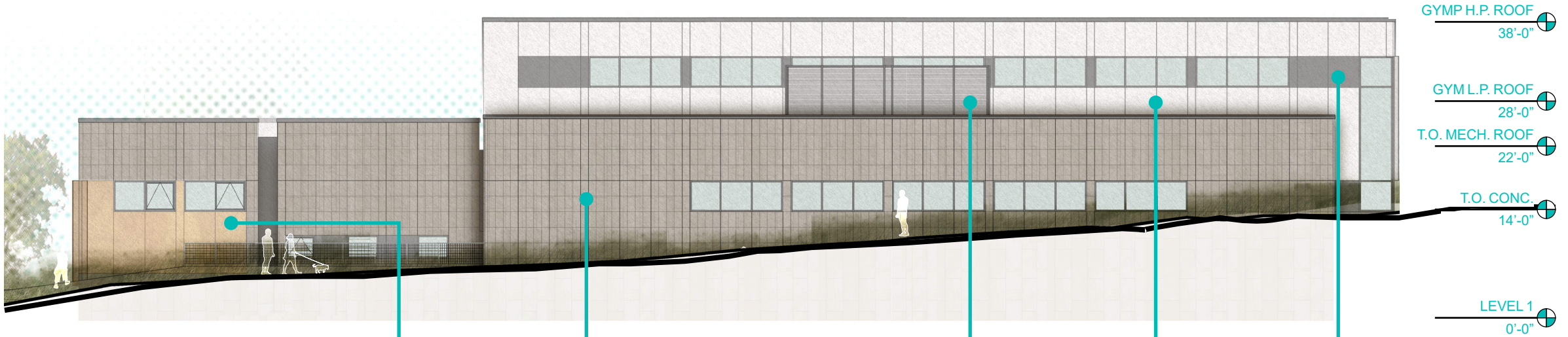
**06 THE RECREATION CENTER ARCHITECTURE SHALL EMBRACE AND RELATE TO THE OTHER CAMPUS BUILDINGS.**

**SOUTH ELEVATION**

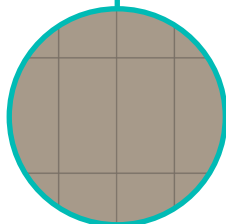




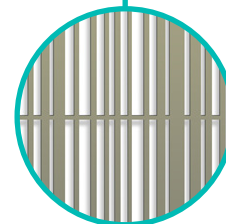
# EXTERIOR ELEVATIONS: MATERIAL PALETTE



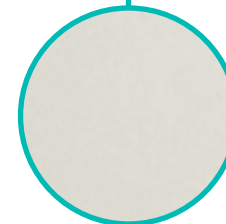
COMPOSITE  
PANEL  
W/ WOOD  
VANEER  
PRODEMA  
PRODEX  
PALE



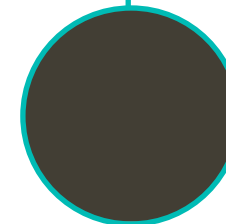
TILE  
CROSSVILLE  
RETROACTIVE 2.0  
12x24  
ANTICO TAUPE



MECHANICAL  
SCREEN  
BOK MODERN



PAINTED  
STUCCO



METAL PANEL  
PAINTED ALUMINUM  
DARK CHARCOAL

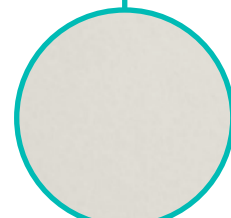
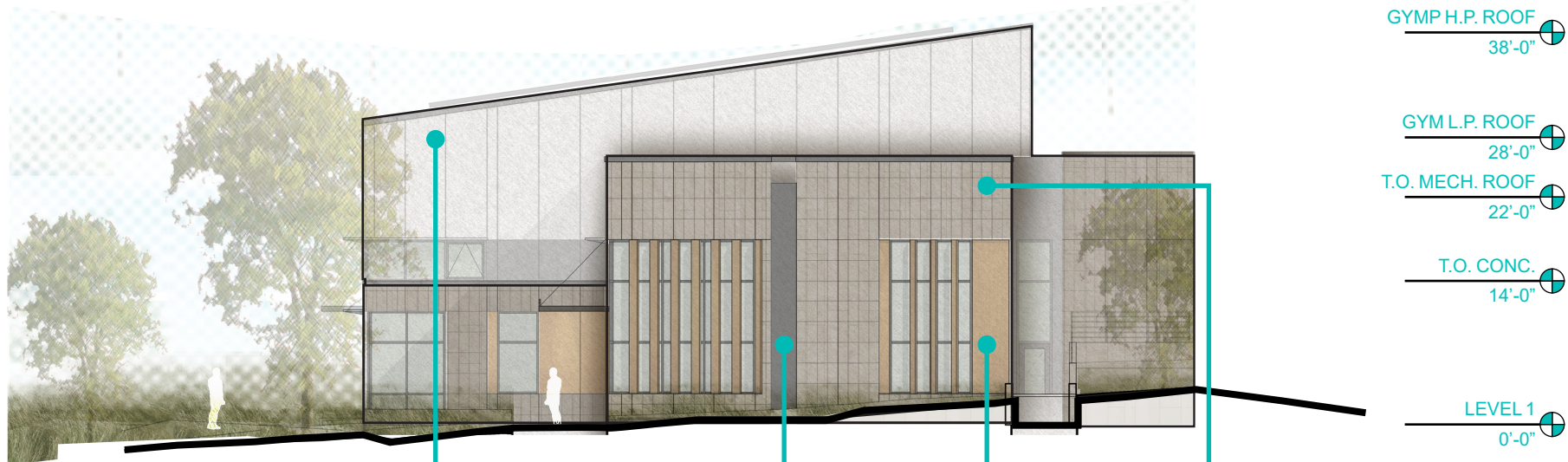
**06 THE RECREATION CENTER ARCHITECTURE SHALL EMBRACE AND RELATE TO THE OTHER CAMPUS BUILDINGS.**

**NORTH ELEVATION**

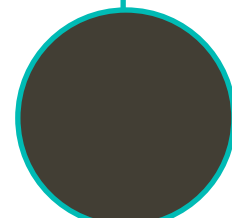




# EXTERIOR ELEVATIONS: MATERIAL PALETTE



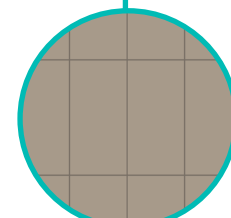
PAINTED  
STUCCO



METAL PANEL  
PAINTED ALUMINUM  
DARK CHARCOAL



COMPOSITE  
PANEL  
W/ WOOD  
VANEER  
PRODEMA  
PRODEX  
PALE



TILE  
CROSSVILLE  
RETROACTIVE 2.0  
12x24  
ANTICO TAUPE

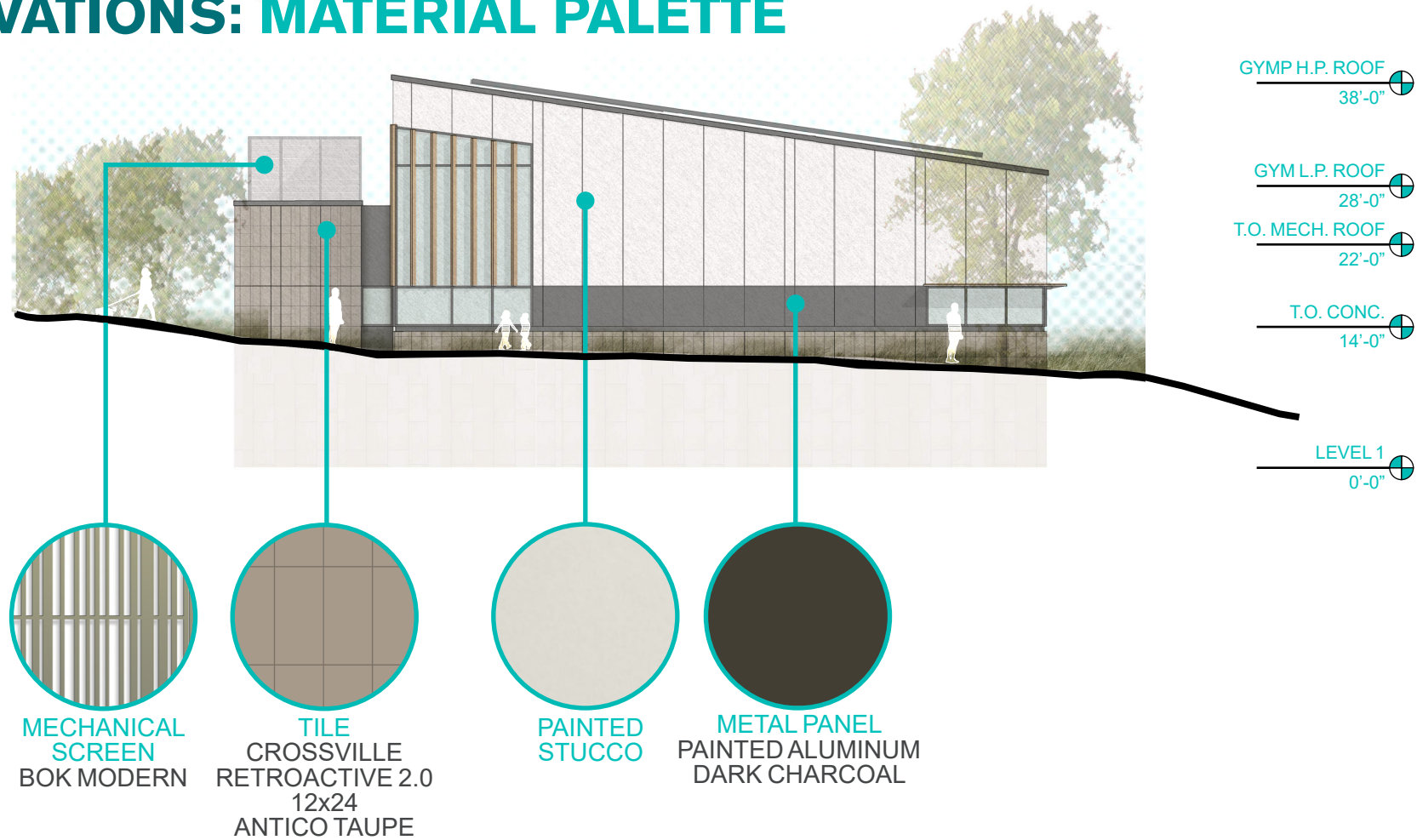
**06 THE RECREATION CENTER ARCHITECTURE SHALL EMBRACE AND RELATE TO THE OTHER CAMPUS BUILDINGS.**

## HAHN STREET | EAST ELEVATION





# EXTERIOR ELEVATIONS: MATERIAL PALETTE



**06 THE RECREATION CENTER ARCHITECTURE SHALL EMBRACE AND RELATE TO THE OTHER CAMPUS BUILDINGS.**

**WEST ELEVATION**





# WELCOMING ENTRY: VIEW FROM HAHN STREET



**07 THE DESIGN SHALL WELCOME VISITORS TO THE RECREATION CENTER.**





# WELCOMING ENTRY: GYM PLAZA AND ENTRY CANOPY



**07 THE DESIGN SHALL WELCOME VISITORS TO THE RECREATION CENTER.**



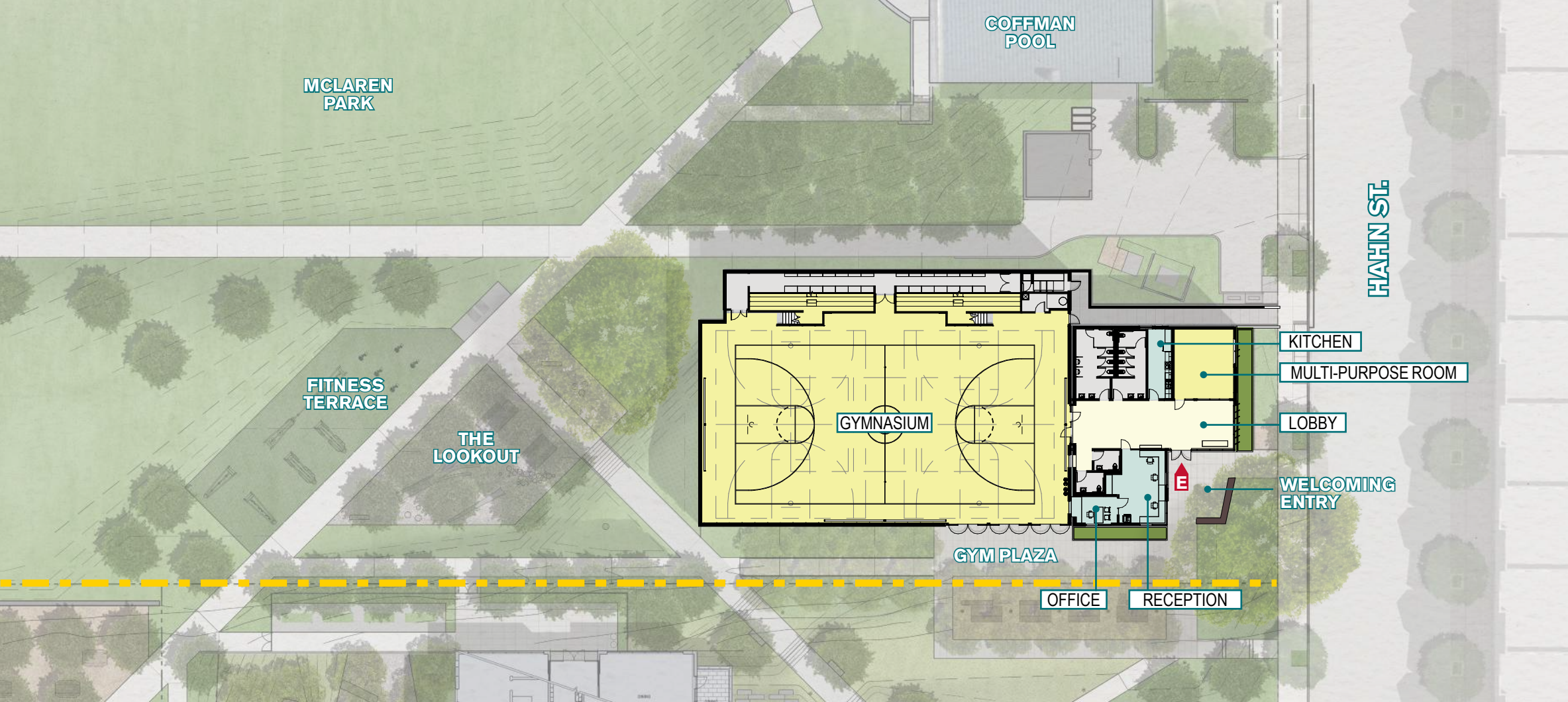
# WELCOMING ENTRY: GYM PLAZA AND ENTRY CANOPY

07 THE DESIGN SHALL WELCOME VISITORS TO THE RECREATION CENTER.





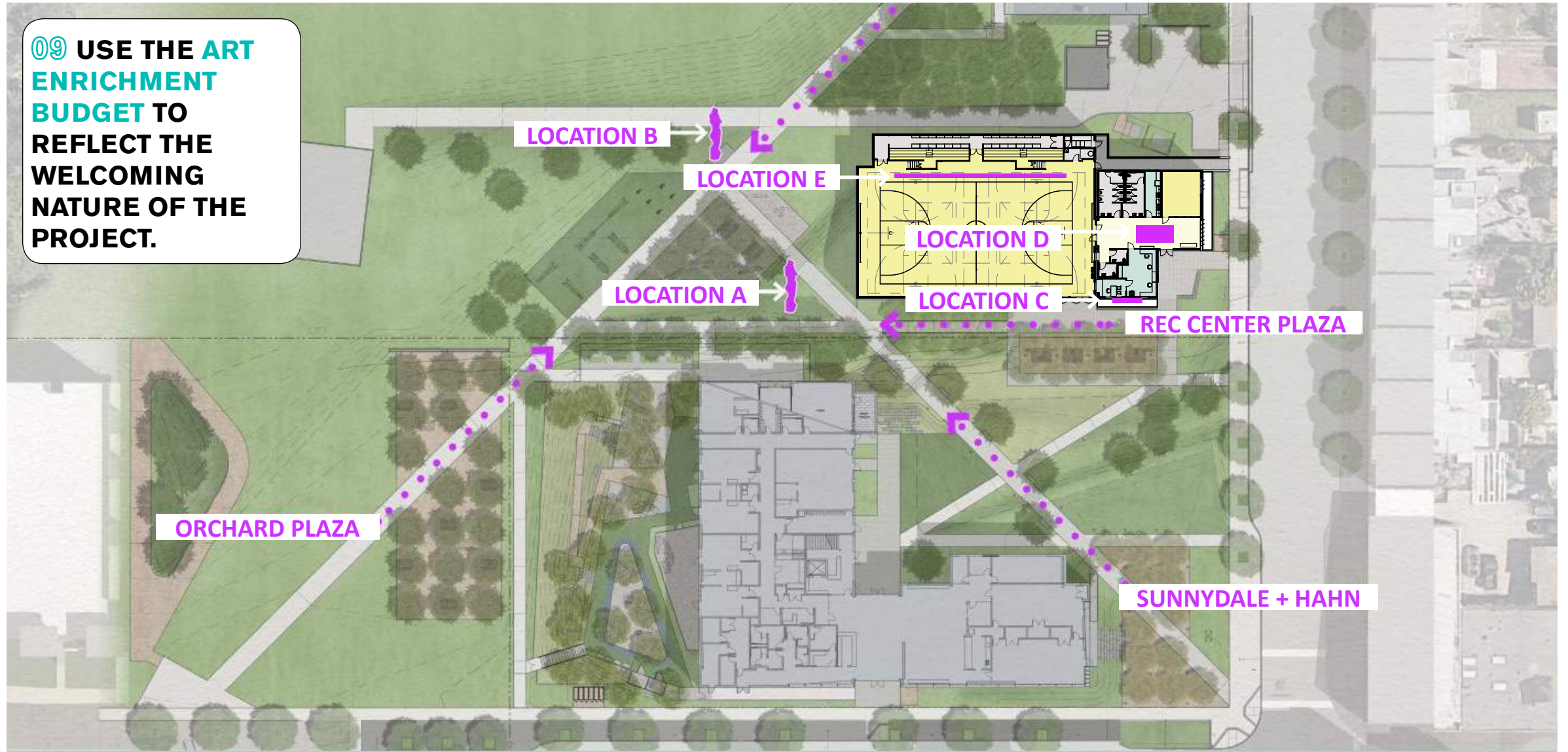
# RECREATION CENTER: FLOOR PLAN & PROGRAM





# PUBLIC ART LOCATION OPTIONS

09 USE THE ART ENRICHMENT BUDGET TO REFLECT THE WELCOMING NATURE OF THE PROJECT.







**Thank You!**



LEDDY MAYTUM STACY ARCHITECTS



Herz Playground and Recreation Center

RELATED

mercyHOUSING

02/08/21 | 36