

# Civic Design Review

---

## Herz Playground Renovation

October 19, 2020

**#herzplay #letsplaysf**



# Welcome!

2

## SF Recreation and Parks Department

- Alexis Ward  
[alexis.ward@sfgov.org](mailto:alexis.ward@sfgov.org)
- Robert Watkins
- Lisa Bransten
- Linda Barnard

## San Francisco Parks Alliance

- Susanna Fraker

## MIG

- Amy Mitchell
- Monique Bassey
- Jamillah Jordan

HERZ PLAYGROUND



# Overview

---

1



# HERZ PLAYGROUND



# Project Scope

**PROJECT AREA**  
9,900 SF





# Project Scope

## **NEW PLAY ELEMENTS AND SURFACING**

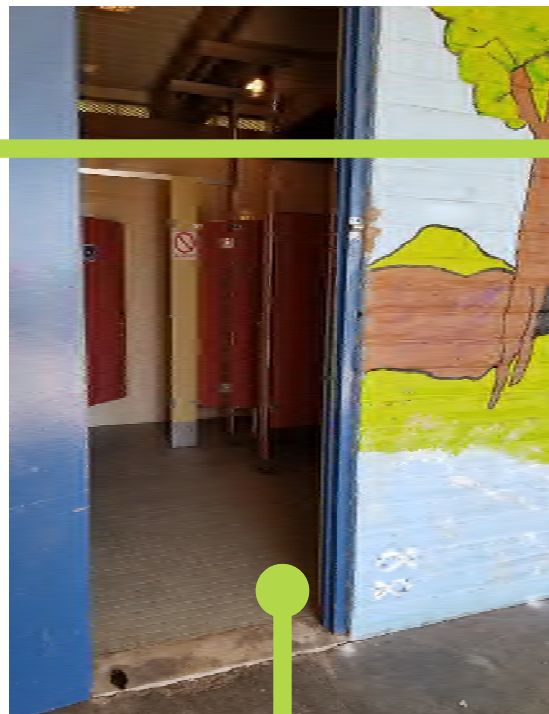
Ages 2-5 and 5-12

## **NEW FURNISHINGS**

## **DRAINAGE, FENCING, ADA IMPROVEMENTS**

## **RESTROOM UPDATE**

## **NEW TREES/PLANTING**



HERZ PLAYGROUND



# Engagement Summary

---

2



# Outreach Events

**COMMUNITY SURVEY**

**FAMILY DAY POP-UP**

**VISIONING WORKSHOP**

**FOCUS GROUPS**

Boys & Girls Club  
Youth Summer Camp  
Mercy Resident Leaders  
Neighbor-Up Night

**YOUTH TASK FORCE**



HERZ PLAYGROUND





# Outreach Events: Alternatives Workshop

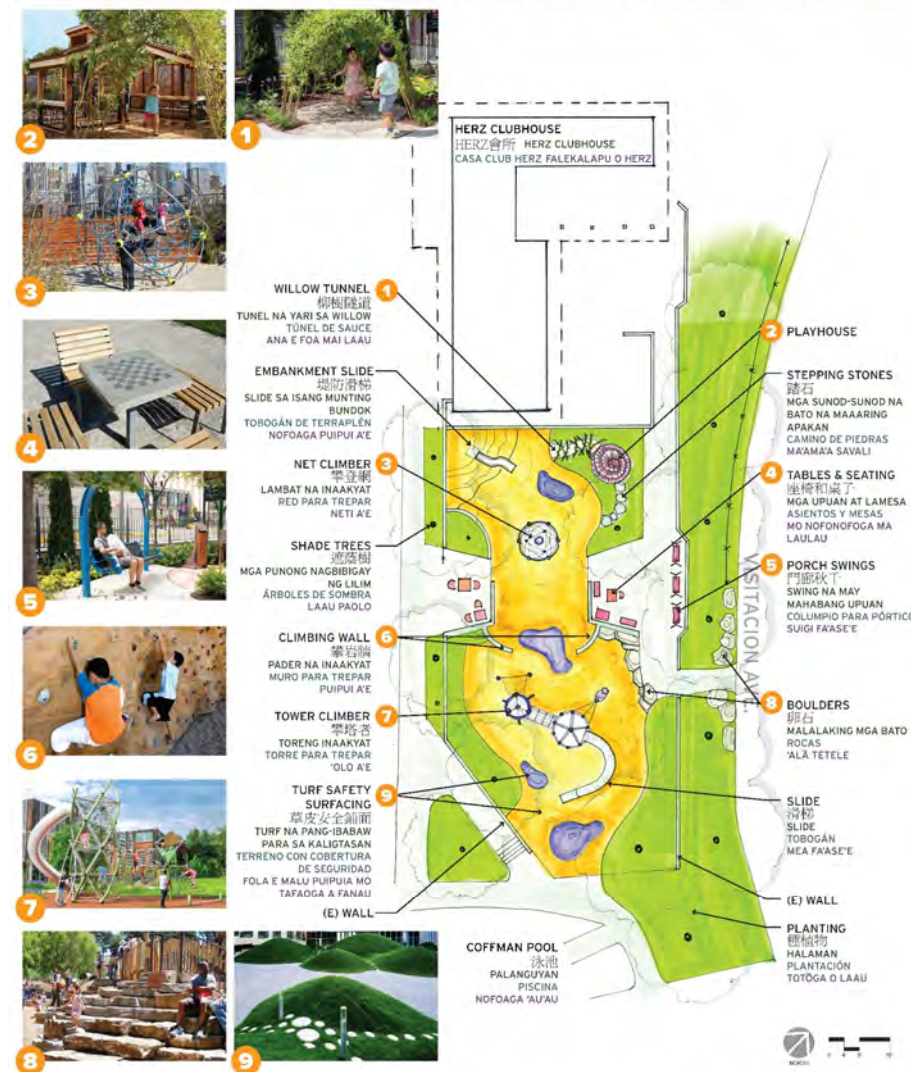
## CONCEPT A: PLAY PORCH

概念A  
遊戲門廊

CONCEPTO A  
ORCHE DE JUEGO

KONSEPTO A  
BALKONAHE PARA SA MGA BATA

KONISEPI A  
FA'ASE'ETA'ALO



## CONCEPT B: DISCOVERY VALLEY

概念B  
發現谷

CONCEPTO B  
VALLE DE  
DESCUBRIMIENTO

KONSEPTO B  
LAMBAK PARA SA PAGGALUGAD

KONISEPI B  
VANU TAUNUUGA



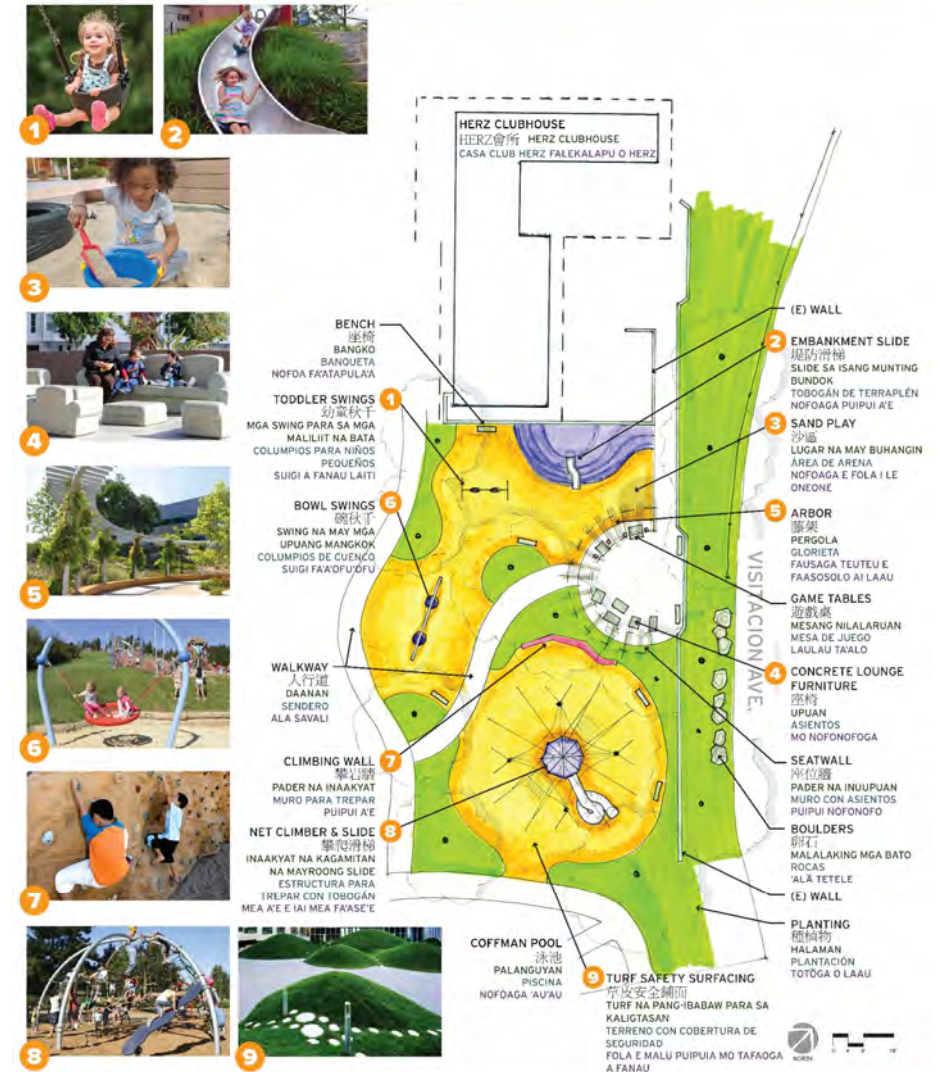
## CONCEPT C: ADVENTURE LOOP

概念C  
歷奇圈

CONCEPTO C  
WALANG HANGGANANG SIRCULO  
PARA SA PAKIKIPAGSAPALARAN

KONSEPTO C  
CIRCUITO DE AVENTURAS

KONISEPI C  
FA'ATA'ALI'OGA O TAUWIGA



HERZ PLAYGROUND





## PROJECT PROCESS:



### COMMUNITY REACH

**106** Total Participants  
**77** Adults  
**29** Children



### PROJECT PARTNERSHIP

Project partnership with Recreation and Park Department, MIG, San Francisco Parks Alliance, and the Community



### SURVEY

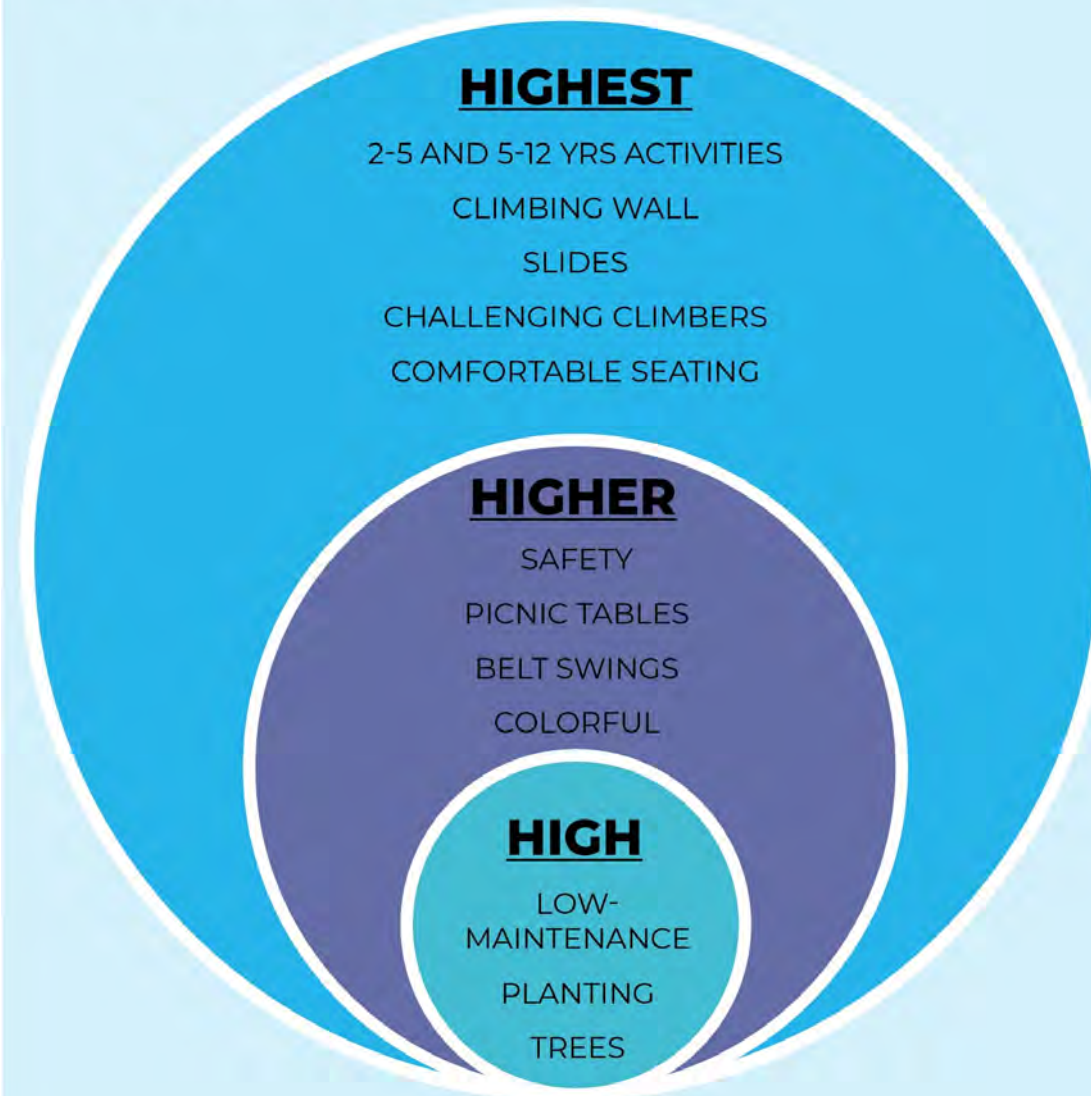
**Survey 1: 2019**  
**46** Total Participants  
**Survey 2: 2020**  
**193** Total Participants



### WORKSHOP AND FOCUS GROUPS

**2** Workshop Meetings  
**4** Focus Group Sessions

## COMMUNITY'S VOICE:



# Community Priorities

- Organic Layout
- Natural
- Modern
- Welcoming to Everyone
- Comfortable
- Safe
- Fun
- Challenging



# Play Equipment Survey



## PARTICIPANTS

- 193 respondents
- 105 “neighbors”
- 48% live near Herz



Inspired by the art of the community. Colors are drawn from the existing Herz Playground Mural on the Club House.



Inspired by the landscape of the valley. The colors are drawn from the big blue sky, the bay, native grasses, and soils of the land.



Inspired by the native California Poppy. Colors are drawn from the warm gold and orange tones of the flower and compliment the bright blue color of the club house.



HERZ PLAYGROUND





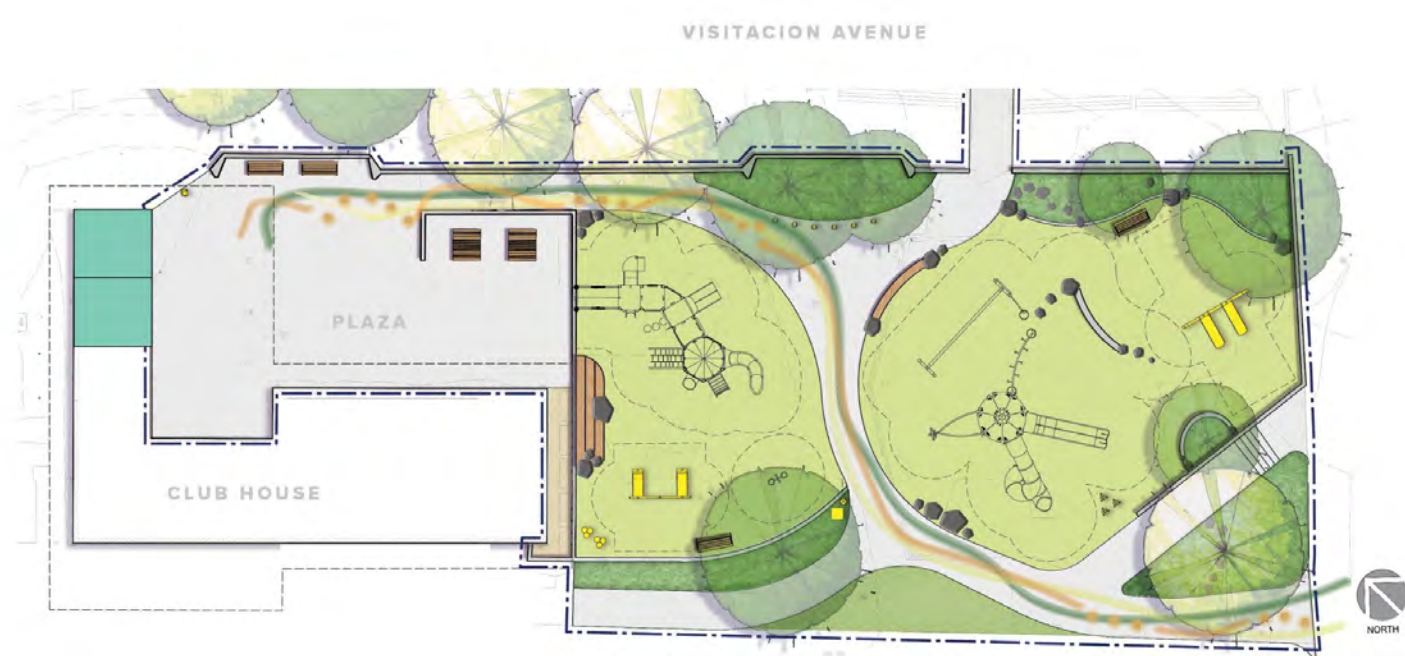
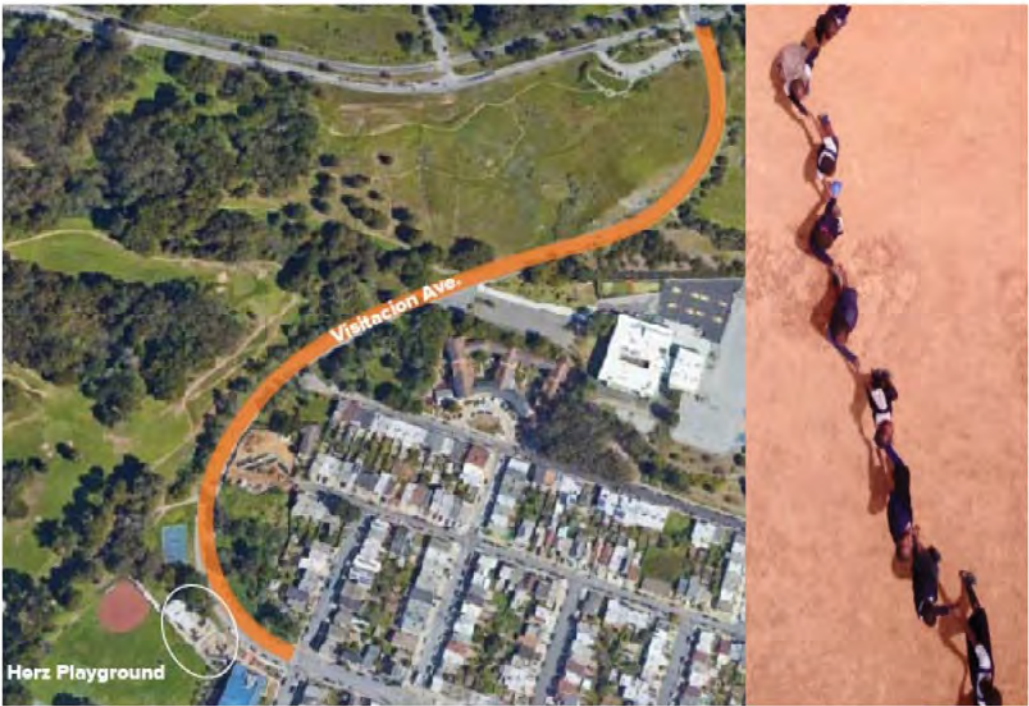
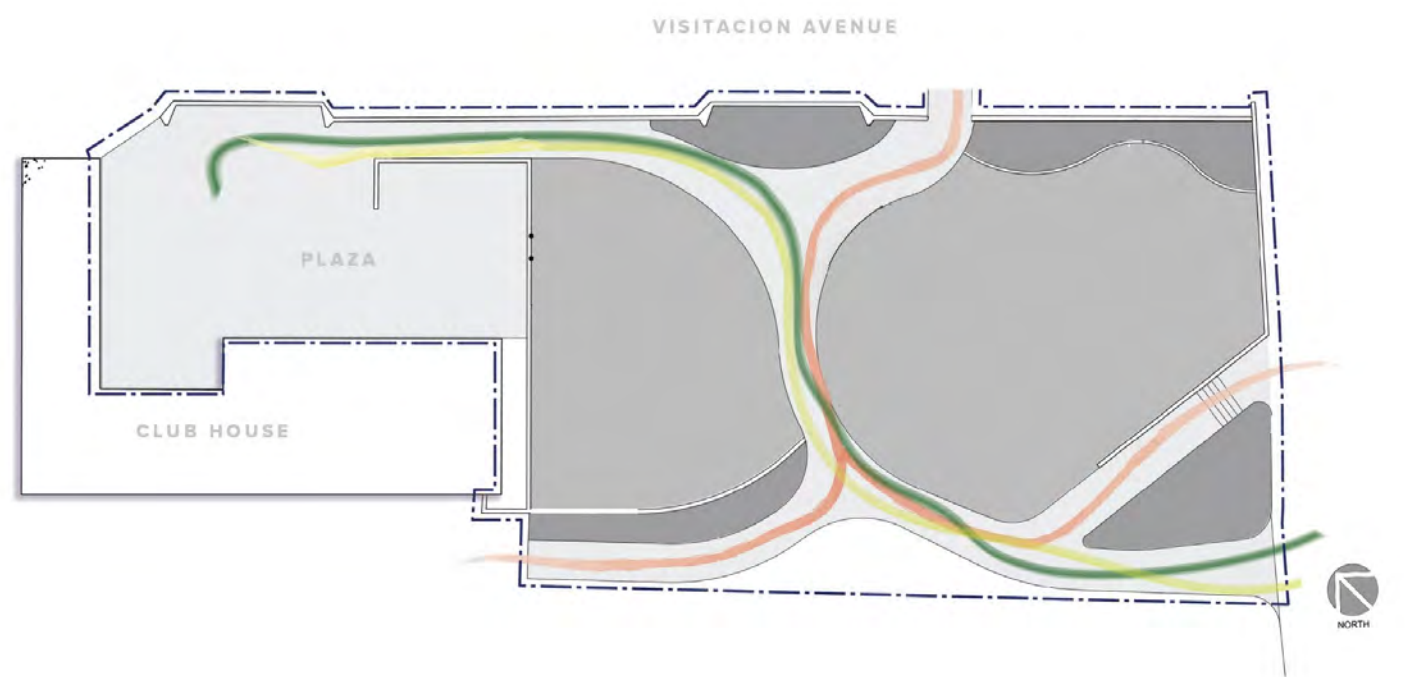
# Final Design Concept

---

3



Concept Design



HERZ PLAYGROUND



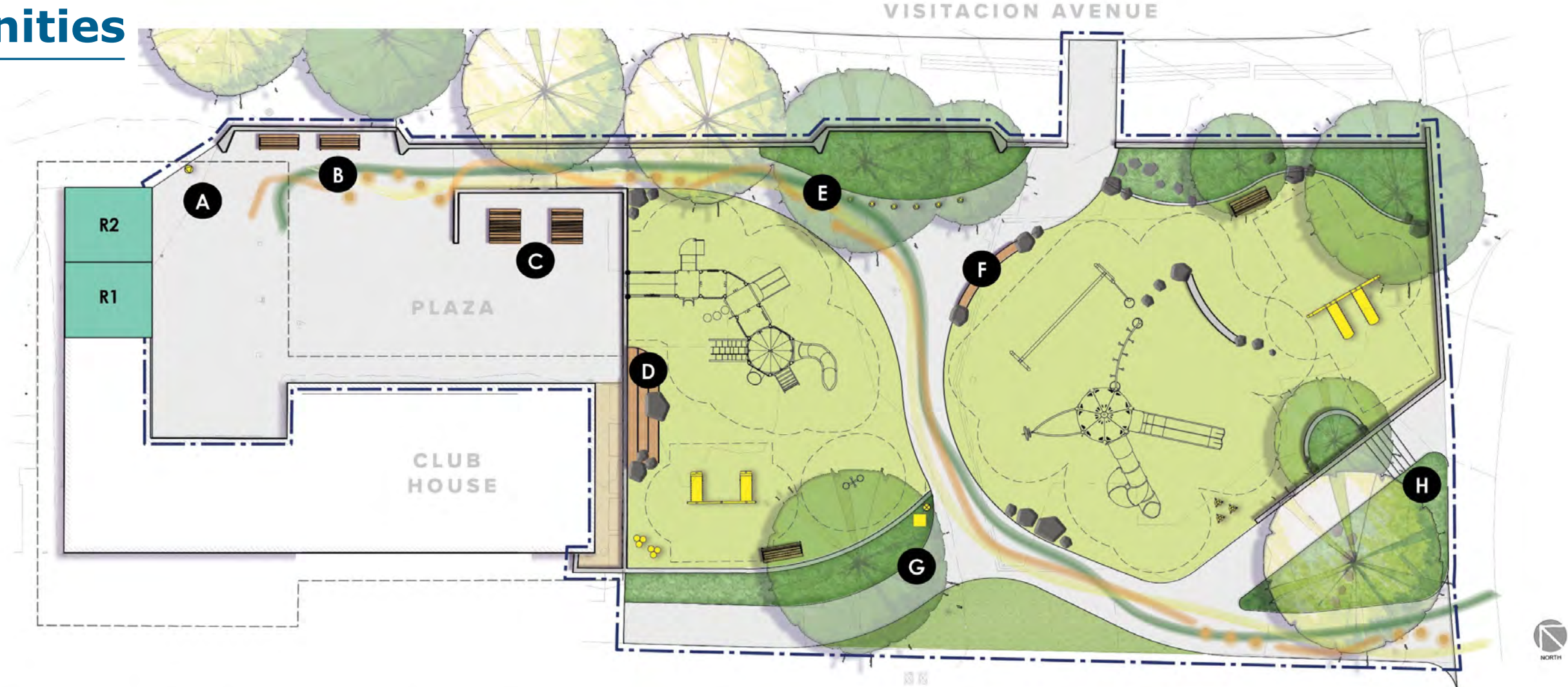
# Concept Plan



HERZ PLAYGROUND



Site Amenities



**A** DRINKING FOUNTAIN



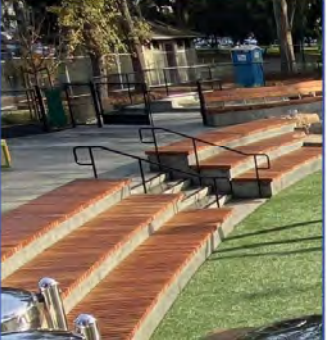
**B** BENCH



**C** PICNIC TABLE



**D** STEPP



**E** EMPEROR CHIMES



**F** WOOD-TOPPED SEATWALL



**G** LET'S PLAY SF DONATION BLOCKS



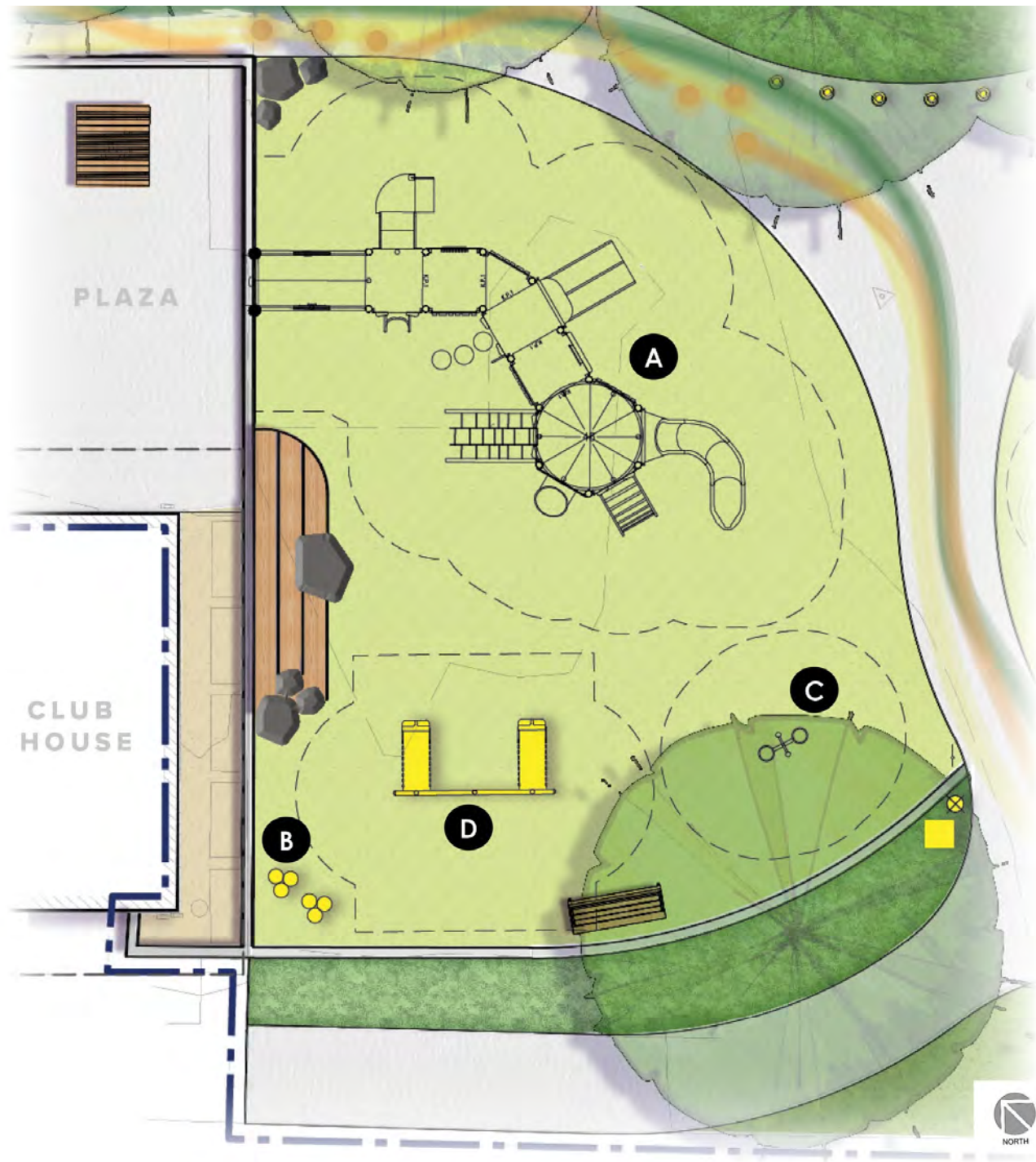
**H** NATIVE AND DROUGHT TOLERANT PLANTING



HERZ PLAYGROUND



# Play Area: 2 to 5-Yr-Olds



HERZ PLAYGROUND

**A** 2-5 YRS PLAY STRUCTURE



**B** HARMONY FLOWER CHIMES



**C** BOBBLE RIDER



**D** TOT SWINGS





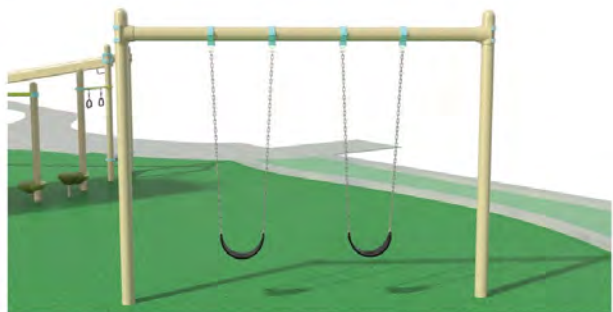
# Play Area: 5 to 12-Yr-Olds



**A** 5-12 YRS PLAY STRUCTURE



**B** BELT SWINGS



**C** ZIPLINE



**D** CLIMBING WALL WITH BOULDER STEPPERS



**E** STEEL DRUM



HERZ PLAYGROUND





## View Facing Southwest



HERZ PLAYGROUND





## View: 2-5 Play Area Facing North



HERZ PLAYGROUND





## View: 5-12 Play Area Facing South

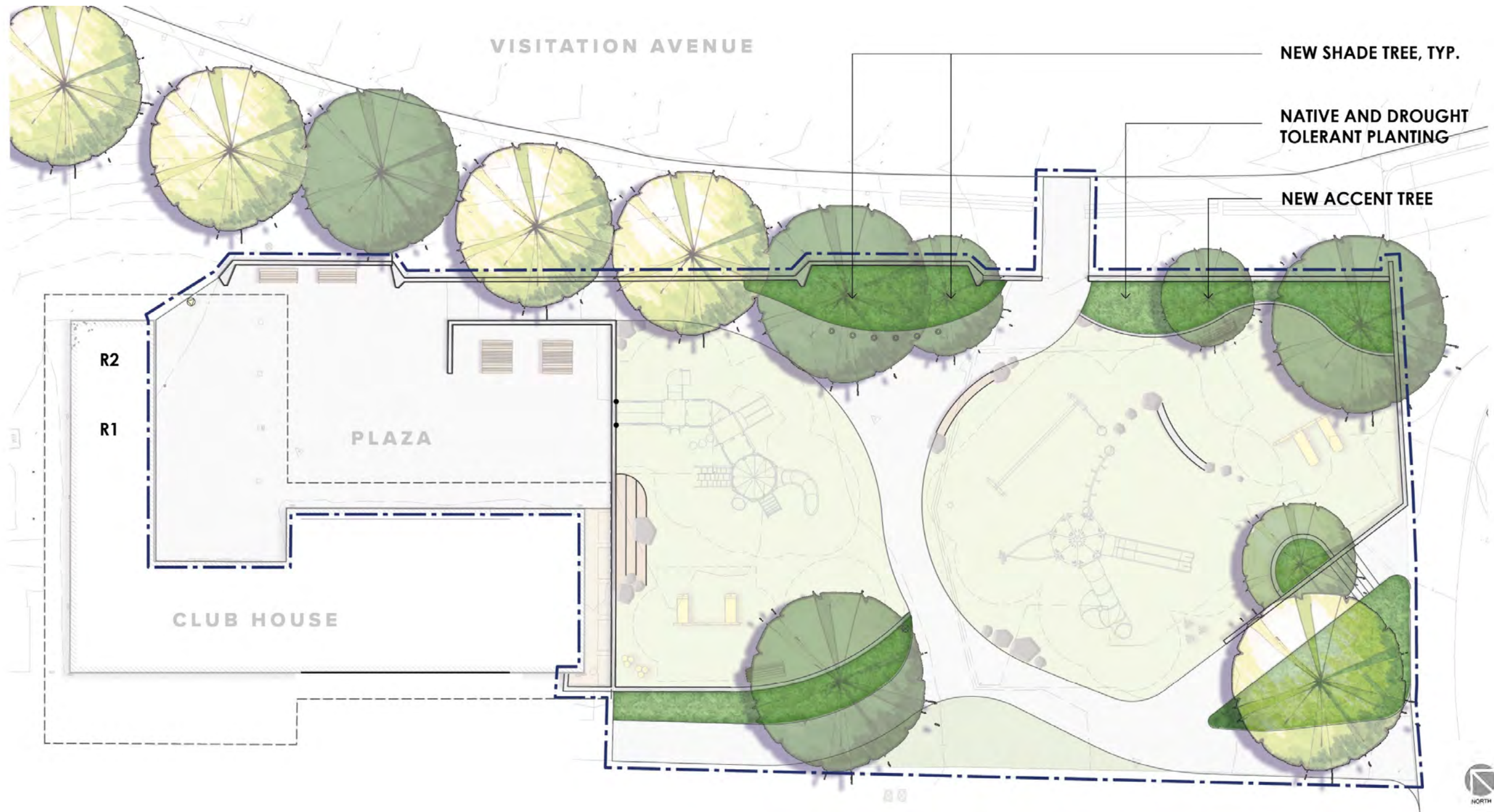


HERZ PLAYGROUND





# Planting Areas



## HERZ PLAYGROUND



# Preliminary Plant Selections

## SHADE TREES



**Primrose Tree**  
(*Lagunaria Pattersonii*)



**Forest Green Oak**  
(*Quercus f. 'Forest Green'*)



**Prospector Elm**  
(*Ulmus Wilsoniana 'Prospector'*)



**Western Redbud**  
(*Cercis occidentalis*)

## ACCENT TREE

## SHRUBS/PERENNIALS



## GRASSES

Native and Adapted Plants, selected for play value, water use, resilience and color

HERZ PLAYGROUND





# Preliminary Plant List

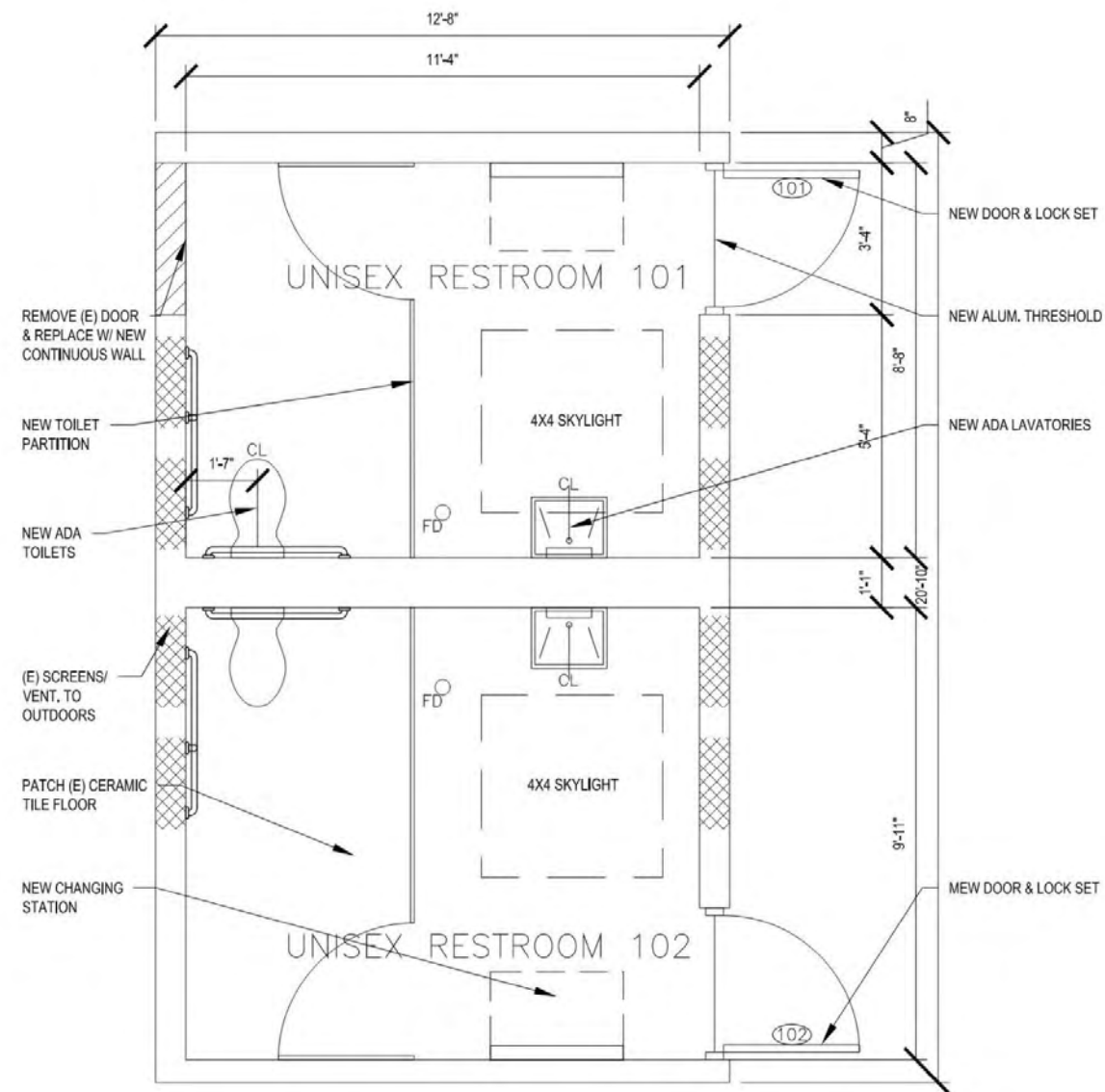
BOTANICAL NAME	COMMON NAME	SPACING	HEIGHT	PROJECT SPREAD	SUN/ SHADE	EVERGRN/ DECID.	NATIVE	WATER USE
TREES								
Cercis occidentalis	Western Redbud - Multi	10' OC	20'	12'	Full Sun/Part Shade	D	N	Very Low
Lagunaria patersonii	Primrose Tree	20' OC	40'	20'	Full Sun/ Part Shade	E		Low
Ulmus wilsoniana 'Prospector'	Prospector Elm	25' OC	40'	30'	Full Sun	D		Low
Ulmus 'Frontier'	Frontier Elm	25' OC	40'	30'	Full Sun/ Part Shade	D		Low
Quercus frianetto 'Forest Green'	Forest Green Oak	25' OC	40'	25'	Full Sun/ Part Shade	D		Low
SHRUBS								
Ribes sanguineum	Red Flowering Currant	7' OC	5-12'	8'	Full Sun/ Part Shade	D	CA Native	Low
Westringia fruticosa 'Morning Light'	Morning Light Coast Rosemary	4' OC	3-4'	4-5'	Full Sun	E		Low
Gambelia speciosa 'Firecracker'	Firecracker Bush Snapdragon	4'	3-4'	6'	Full Sun/ Part Shade	E	CA Native	Low
Leonotis leonurus	Lion's Tail	4'	4-6'	4-6'	Full Sun	E		Low
Berberis pinnata	California Holly Grape	4' OC	3-7'	5'	Sun/Shade	E	CA Native	Low
PERENNIALS								
Achelia millefolium	Yarrow	18" OC	1-3'	1-2'	Full Sun/ Part Shade	E	CA Native	Low
Eschscholzia californica	California Poppy	18" OC	1-2'	1-2'	Full Sun	Semi-D	CA Native	Very Low
Iris douglasiana	Douglas Iris	18" OC	1-2'	1-2'	Full Sun to Full Shade	E	SF Native	Low
Verbena rigida	Sandpaper Verbena	2' OC	1-2'	3'-4'	Full Sun	E		Low
Monardella macrantha	Scarlet Monardella	18" OC	1'	2'	Full Sun/ Part Shade	E	CA Native	Low
Mimulus aurantiacus	Sticky Monkey Flower	3' OC	3.5-5'	5'	Full Sun/ Part Shade	E	CA Native	Very Low
Penstemon heterophyllus	Foothill Penstemon	3' OC	3'	5'	Full Sun	E	CA Native	Low
Salvia clevelandii 'Alan Chickering'	Alen Chickering Salvia	6' OC	3-4'	8'	Full Sun/ Part Shade	E	CA Native	Low
Salvia 'Aromas'	Aromas salvia	3' OC	3-5'	3'	Full Sun/ Part Shade	E	CA Native	Low
Salvia greggii	Autumn Sage	2' OC	2-4'	2-3'	Full Sun	E		Low
GRASSES								
Deschampsia cespitosa	Tufted Hair Grass	18' OC	2-4'	1-2'	Full Sun/ Part Shade	E	CA Native	Low
Festuca californica	California Fescue	2' OC	2-3'	2'	Full Sun/ Part Shade	E	CA Native	Low
Leymus condensatus 'Canyon Prince'	Canyon Prince Giant Wild Rye	3' OC	2-3'	3'	Full Sun	E	CA Native	Low
Muhlenbergia capillaris	Pink Muhly	3' OC	2-3'	3'	Full Sun	E		Low
Muhlenbergia rigens	Deer Grass	4' OC	4-5'	4'	Full Sun	E	CA Native	Low





# Restroom Interior Renovation

## FLOOR PLAN



1 FLOOR PLAN - OPT 1  
1/2" = 1' - 0"

## EXISTING CONDITIONS



## HERZ PLAYGROUND



# Thank You!

25

## SF Recreation and Parks Department

- Alexis Ward  
[alexis.ward@sfgov.org](mailto:alexis.ward@sfgov.org)
- Robert Watkins
- Lisa Bransten
- Linda Barnard

## San Francisco Parks Alliance

- Susanna Fraker

## MIG

- Amy Mitchell
- Monique Bassey
- Jamillah Jordan

