



900 INNES & INDIA BASIN SHORELINE PARK

CIVIC DESIGN REVIEW – PHASE 2: DESIGN DEVELOPMENT

Prepared for San Francisco Recreation and Parks and The Trust for Public Land
by GGN with Jensen Architects, Sherwood Design Engineers, Rana Creek, Moffatt & Nichol, Jon Brody Structural
Engineers, Interface Engineering, Niteo Lighting, and Boudreau Associates

For Review on September 21, 2020 by the San Francisco Civic Art's Commission's Civic Design Review Board

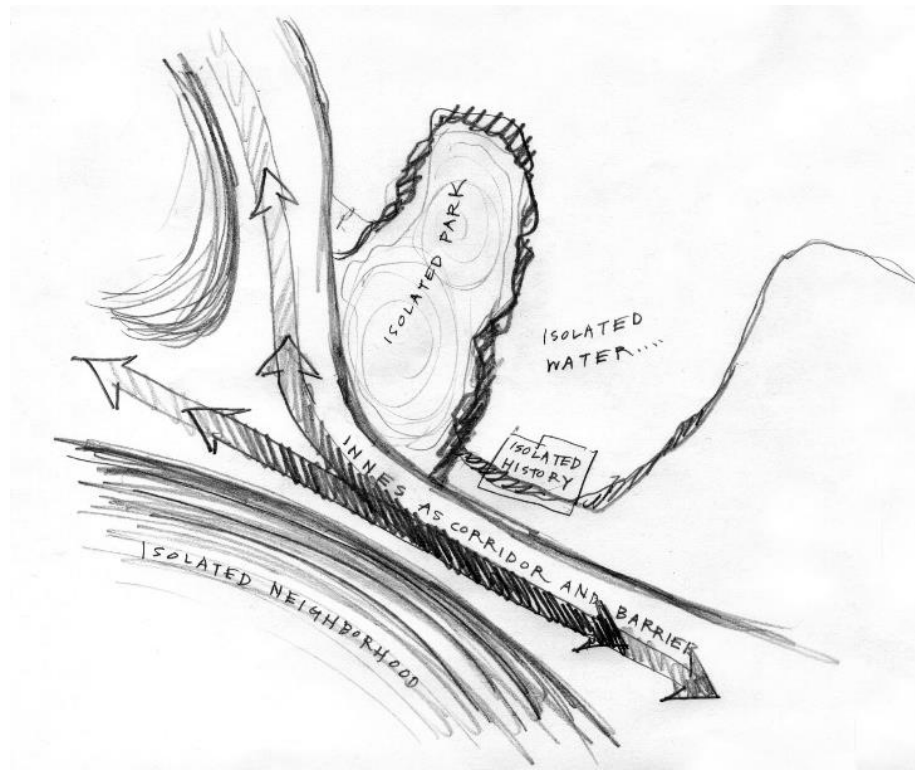


India Basin Shoreline Park



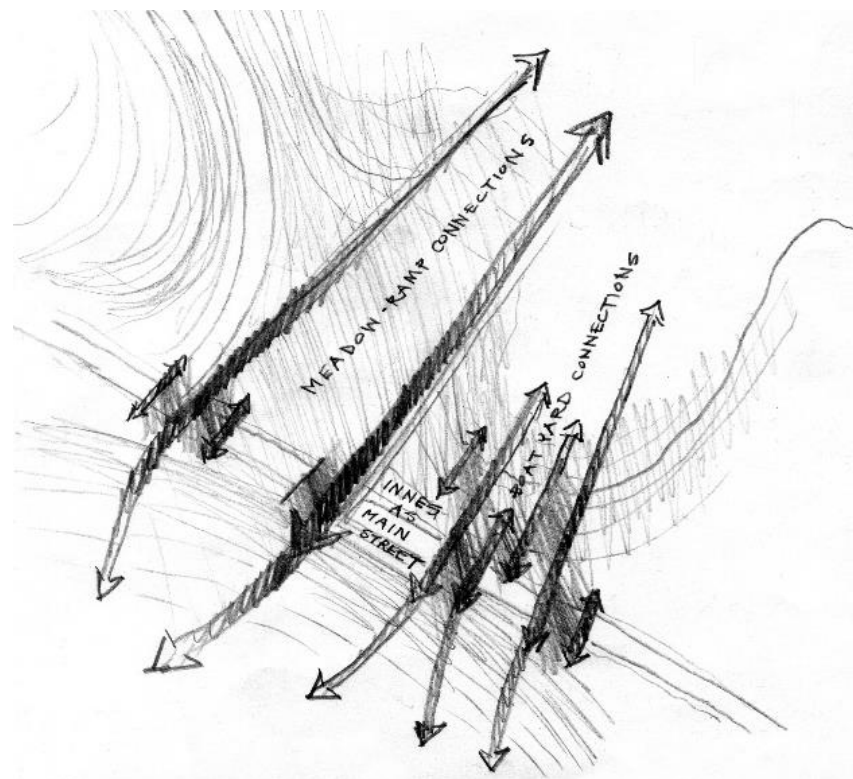
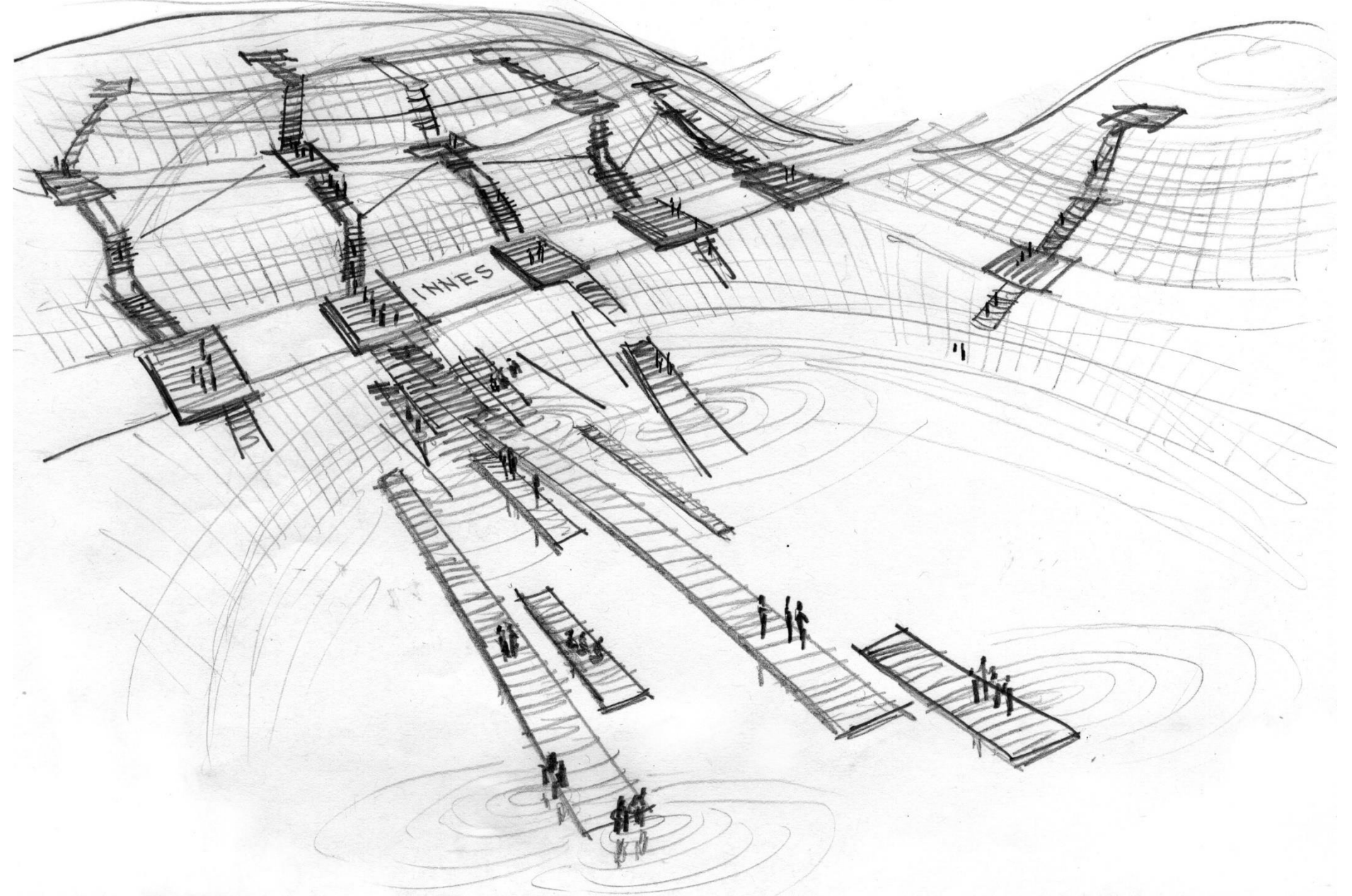
900 Innes





INTRODUCE A WALKABLE CROSS-GRAIN

- ... slowing through-traffic with texture
- ... emphasizing the human scale over the corridor



2019-2020 Public Engagement included:

- On-site activations and community events
- Feedback and validation through conversations, focus meetings, and surveys
- The formation of an Equitable Development Plan (EDP) process and Leadership Group
- 15 EDP meetings on core topics (right) and design focus areas



On-Site Engagement



On-site Engagement







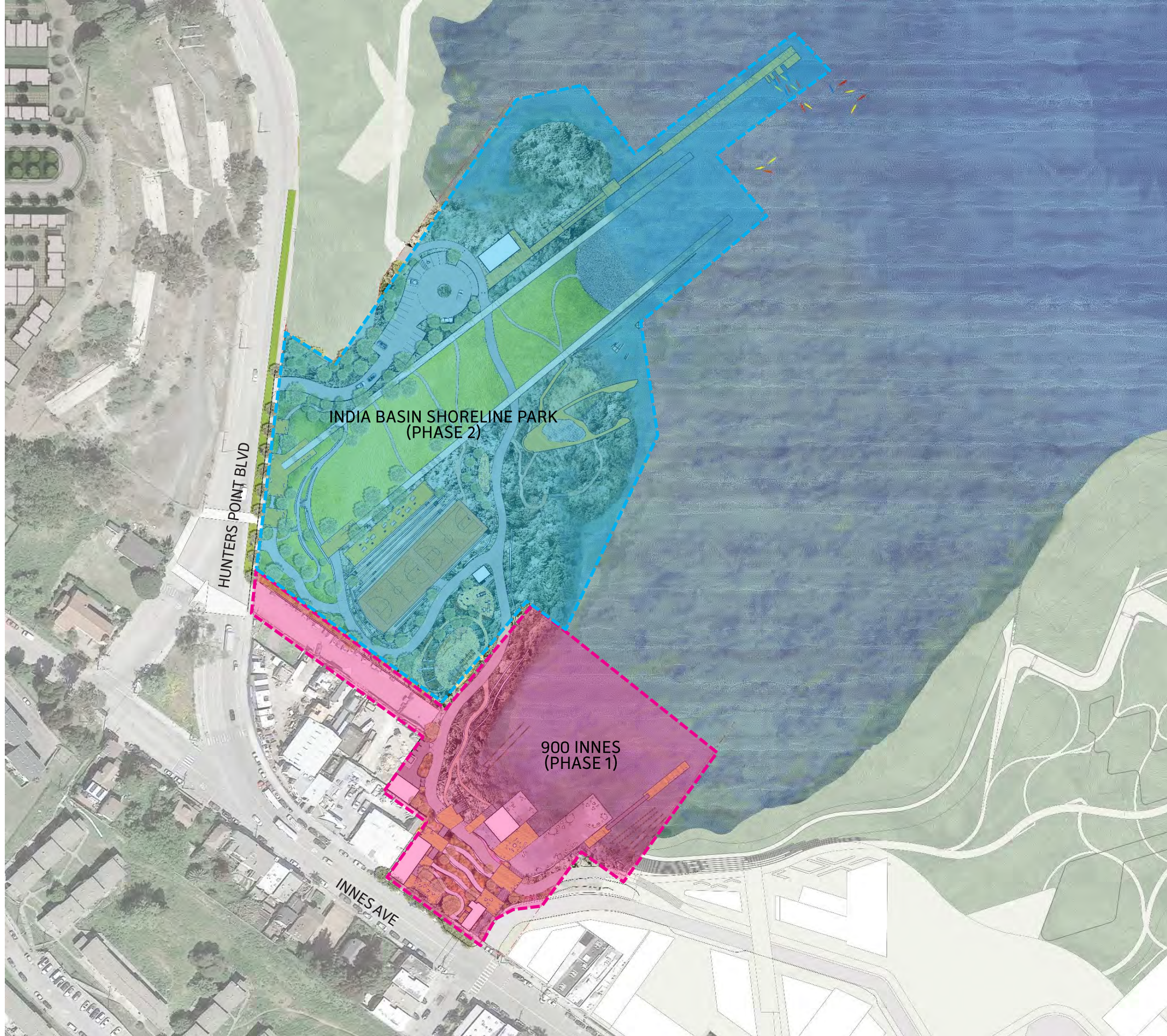


Schematic Design CDR Feedback

- ✓ Provide material choices and colors for all architecture
- ✓ Show spot elevations on sections
- ✓ Clarify location of railings

Design Evolution from Schematic Design

- Boatyard configuration refined to further open up natural shoreline experience and waterfront views
- Innes Edge right-sized, structure designed to frame views into the park
- Pier 2 chosen as SFAC art opportunity due to location and visibility
- Bay Trail further defined from Boatyard Plaza to increase pedestrian and cyclist safety
- Hunters Point entry designed to create social spaces along street
- Boathouse deck increased to provide staging ground and educational space
- Floating dock designed for outdoor classroom space as well as active and passive recreation



-  PHASE 1 - 900 INNES
Construction 2021-22
-  PHASE 2 - INDIA BASIN SHORELINE PARK
Construction 2023-24, pending funding





SHIPWRIGHT'S COTTAGE



FOOD PAVILION



SHOP BUILDING



MAINTENANCE BUILDING

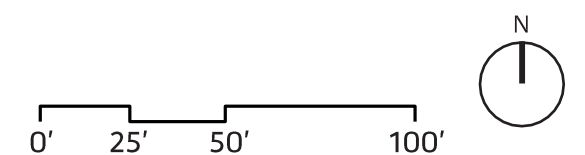


900 INNES BOATYARD

- 1 RESTORED SHIPWRIGHT'S COTTAGE WELCOME CENTER
- 2 INNES EDGE
- 3 FOOD PAVILION
- 4 INNES GARDEN + ACCESSIBLE PATHS
- 5 GRIFFITH STREET STEPS
- 6 OVERLOOK TERRACE
- 7 SMALL PIER (PIER 1)
- 8 LARGE PIER (PIER 2)
- 9 FLOATING DOCK
- 10 SHOP BUILDING
- 11 NATURAL SHORELINE + MARINERAILS
- 12 MAINTENANCE BUILDING

- PICNIC / GATHERING AREA
- RESTROOM
- CAFÉ / CONCESSION

- BAY TRAIL
- BIKE PATH (CLASS 1)



FLOATING DOCK
 960 SQ FT
 Viewing platform; passive recreation

PIER 1
 1400 SQ FT
 Flexible space; special events
 (yoga/fitness classes, dance, etc.)

SHOP BUILDING
 1178 SQ FT

FOOD PAVILION SPILLOVER
 805 SQ FT
 Flexible space; outdoor dining

FOOD PAVILION
 1715 + 1081 SQ FT

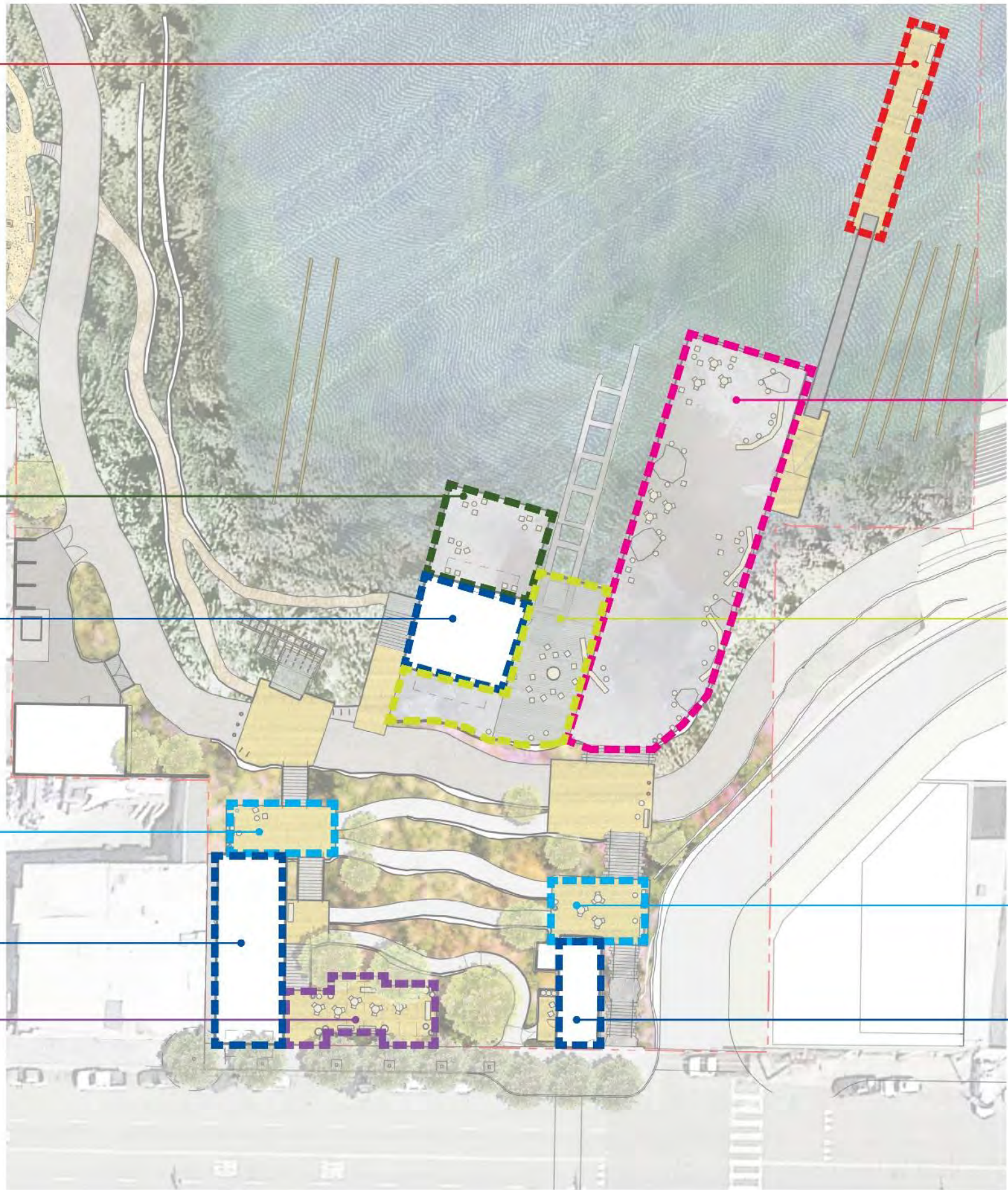
INNES EDGE
 1150 SQ FT
 Flexible space; outdoor dining

PIER 2
 6750 SQ FT
 Flexible space; special events
 (farmer's market, outdoor
 movies/concerts, themed festivals),

SHOP BUILDING SPILLOVER
 3350 SQ FT
 Flexible space; community
 storytelling

COTTAGE SPILLOVER
 882 SQ FT
 Flexible space

SHIPWRIGHTS COTTAGE
 725+ 725 SQ FT





NEIGHBORHOOD EDGE

- 6 Hunters Point Decks
- 7 Parking

SCOW SCHOONER BOATYARD

- 8 Boatyard Plaza
- 9 Maker Shop
- 10 Floating Dock
- 11 Resilient Shoreline
- 12 Maintenance Building

SAGE SLOPES

- 13 Cookout Terrace
- 14 Viewing Steps
- 15 Basketball Courts
- 16 3-5 Playground
- 17 Adventure Playground
- 18 Fitness Area
- 19 Wetland Walk
- 20 Bay City Ferry
- 21 Lookout Platform

THE MARINEWAY

- 22 Marineway Lawn
- 23 Amphitheater Grove
- 24 Gravel Beach
- 25 Boathouse
- 26 Recreational Pier + Floating Dock

 Public Restroom

 Bay Trail



BOATHOUSE



1895 SQ FT
 Boat storage
 Program offices (RPD and 3rd-party vendor)
 Public restrooms

RESTROOM



275 SQ FT
 Public multi-stall restroom

BOATHOUSE SPILLOVER + DOCK
1900 + 3560 SQ FT
Outdoor classroom; human-powered
boat launch; passive recreation

MARINEWAY LAWN
56400 SQ FT
Flexible space; special events
(outdoor movies, concerts, etc.)

HUNTERS POINT DECKS
4355 SQ FT
Flexible space; swings

COOKOUT TERRACE
4070 SQ FT
Grilling and picnic space

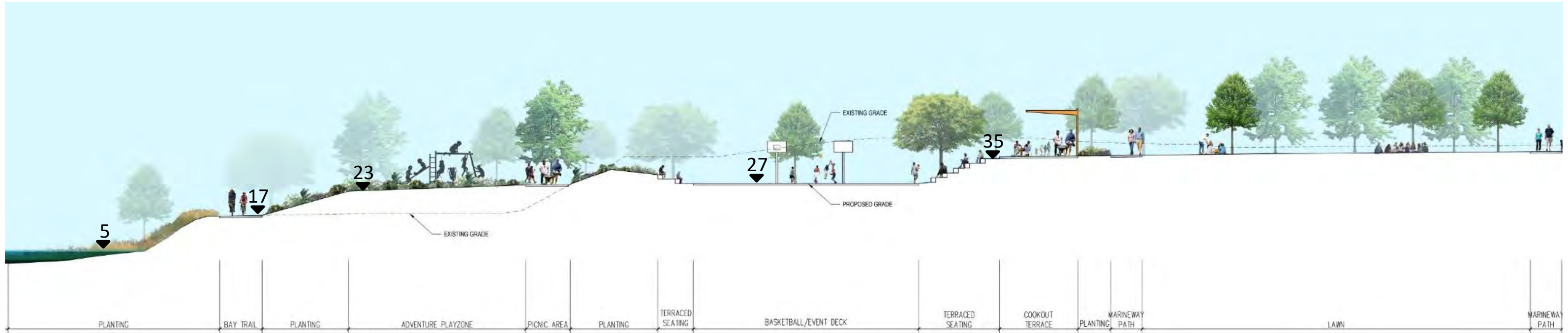
PLAY AREAS
7130 SQ FT
Adventure play



GRAVEL SHORE
9490 SQ FT
Flexible program; water access

BAY CITY FERRY
5200 SQ FT
Flexible program; net and
seating; play and interpretive
opportunities

BASKETBALL COURTS
13500 SQ FT
Basketball; special events

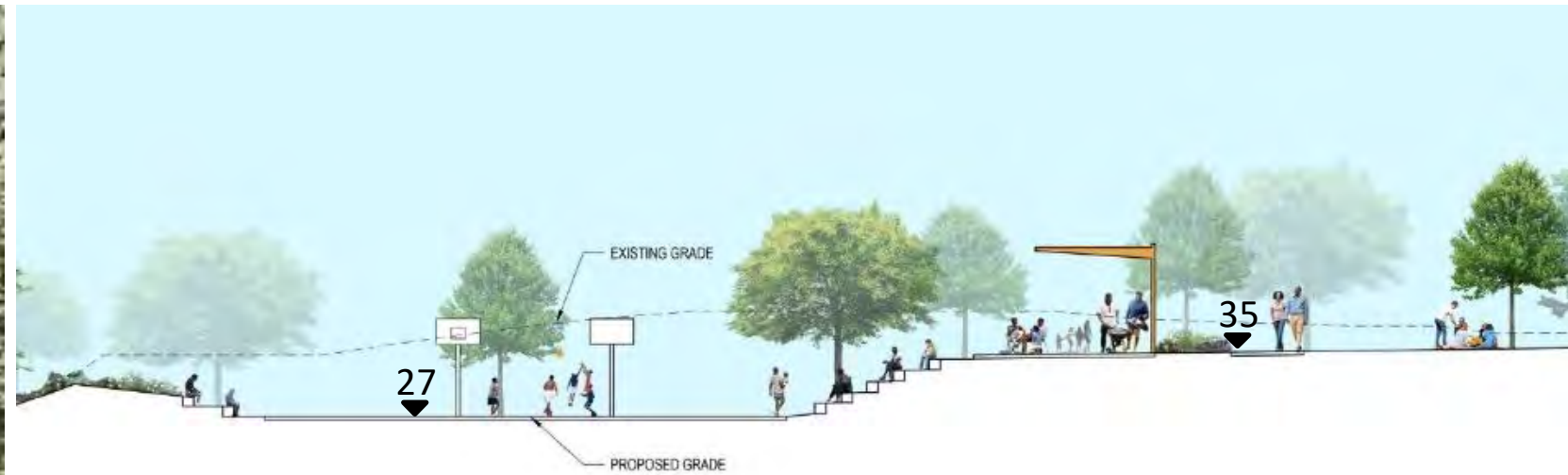


Cookout Terrace

- Central space for family and community gatherings
- Strong visual and program connections from the Marineway Lawn to the Play Areas
- Overhead, permeable structure to create a familiar, comfortable space

Basketball Courts

- Key recreational feature for neighborhood youth
- Flexible functionality for sports and occasional events
- Strong visual connections to the Cookout Terrace and Play Areas
- Potential as additional art surface



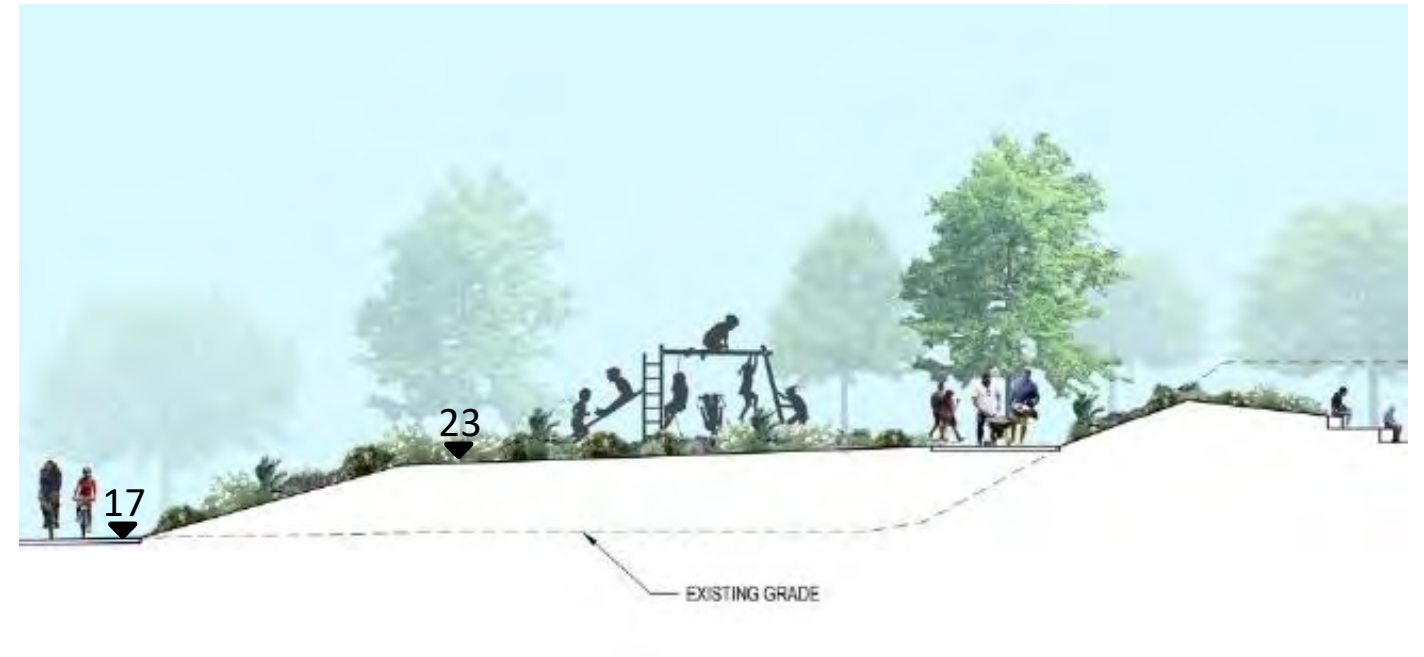
Concept Sketch



Reference image – actual design to be developed with the community

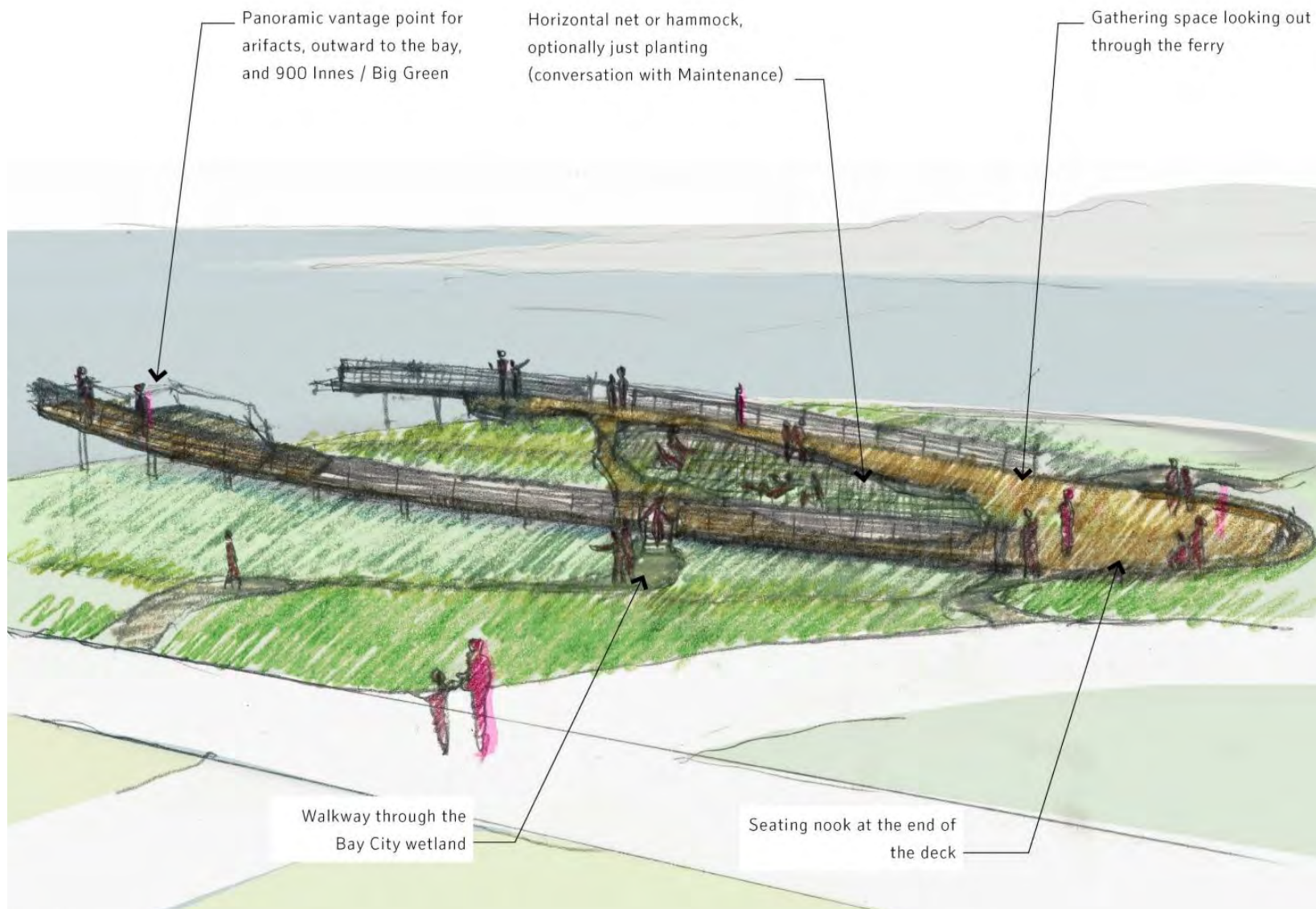
Play Areas

- Should be as large and generous as possible
- Dedicated areas for younger and older kids
- Unique play elements that fit the site and speak to its natural features and history



Bay City Ferry

- A multigenerational, unique space
- A place to learn the site's history and interact with the ferry ruins
- A place to experience the views of the water and of nature in a new way



Original Bay City Ferry



Spruce Street Harbor Park, Philadelphia



Vegetation

Wood

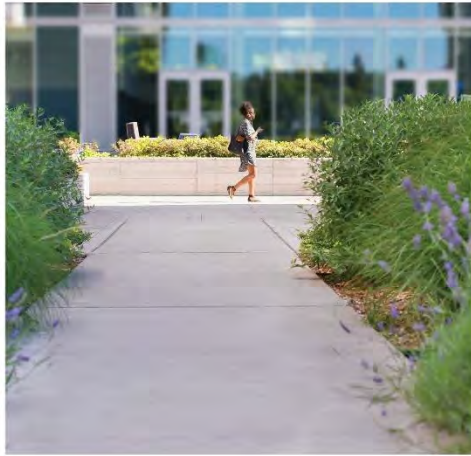
Concrete & Granite

Steel

Soft —————> Hard



Exposed Aggregate



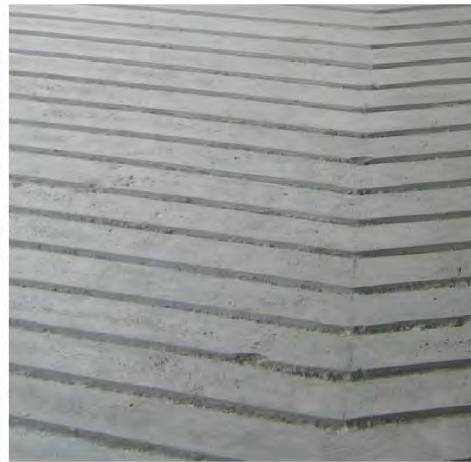
PIP



Local Stone



PIP with Art Finish (Lithocrete)*



PIP with Specialty Finish



Asphalt



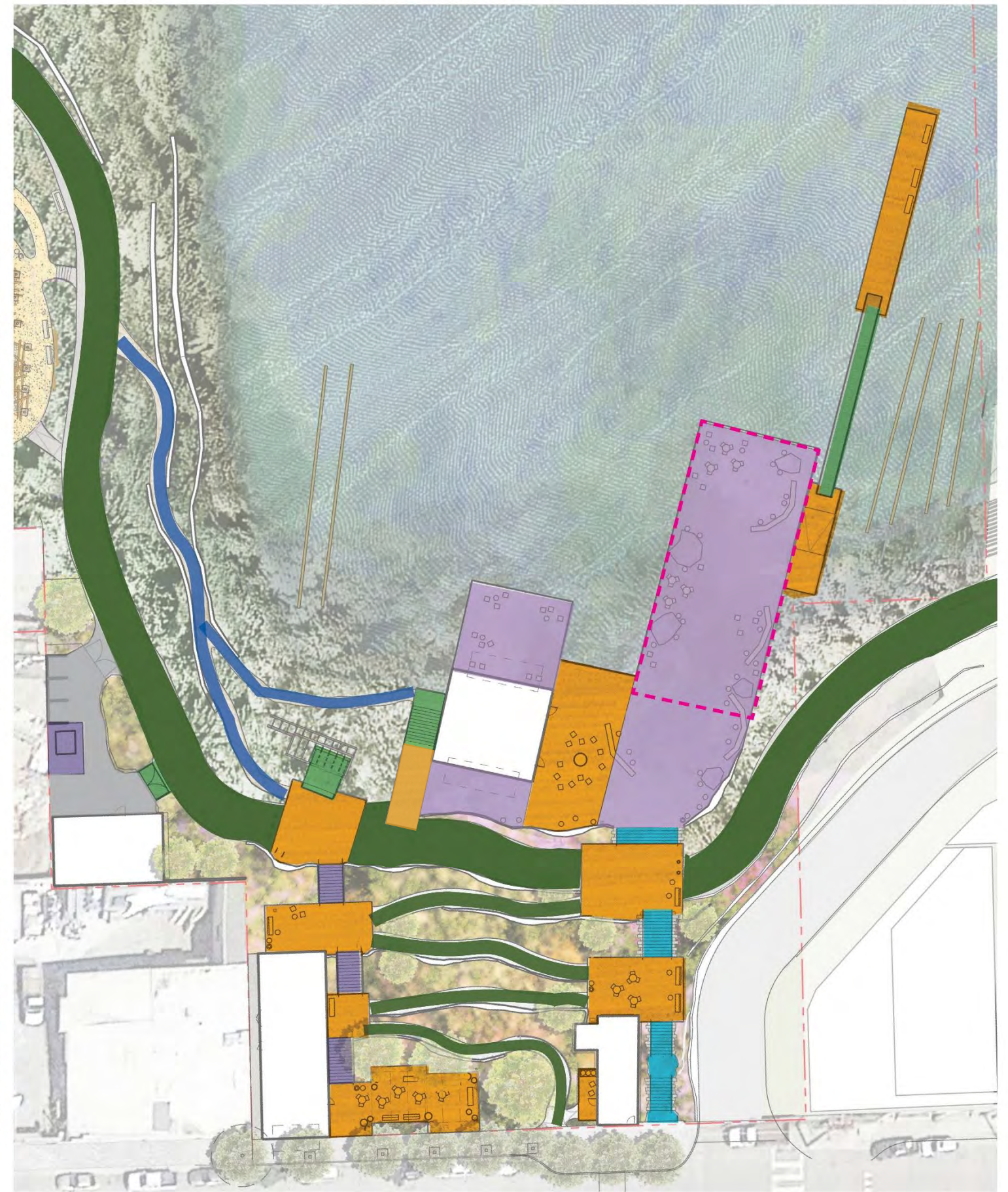
Wood Decking



Stabilized Crushed



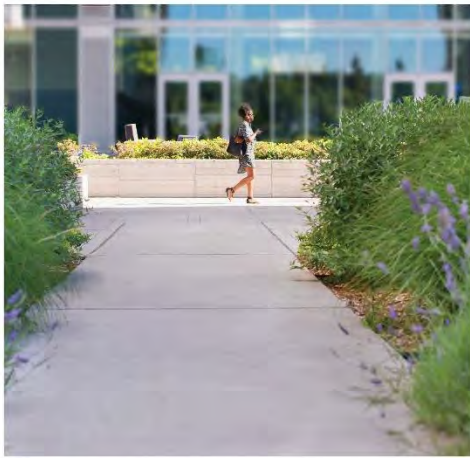
Metal Grating



*Reference Image – artist to be selected through SFAC process



Exposed Aggregate



PIP



PIP with Painted Art Finish *



PIP with Specialty Finish



Metal Grating



Wood Decking



Engineered Wood Fiber



Stabilized Crushed Stone



*Reference Image – art to be developed with the community



Bench Type 1: Simple Industrial

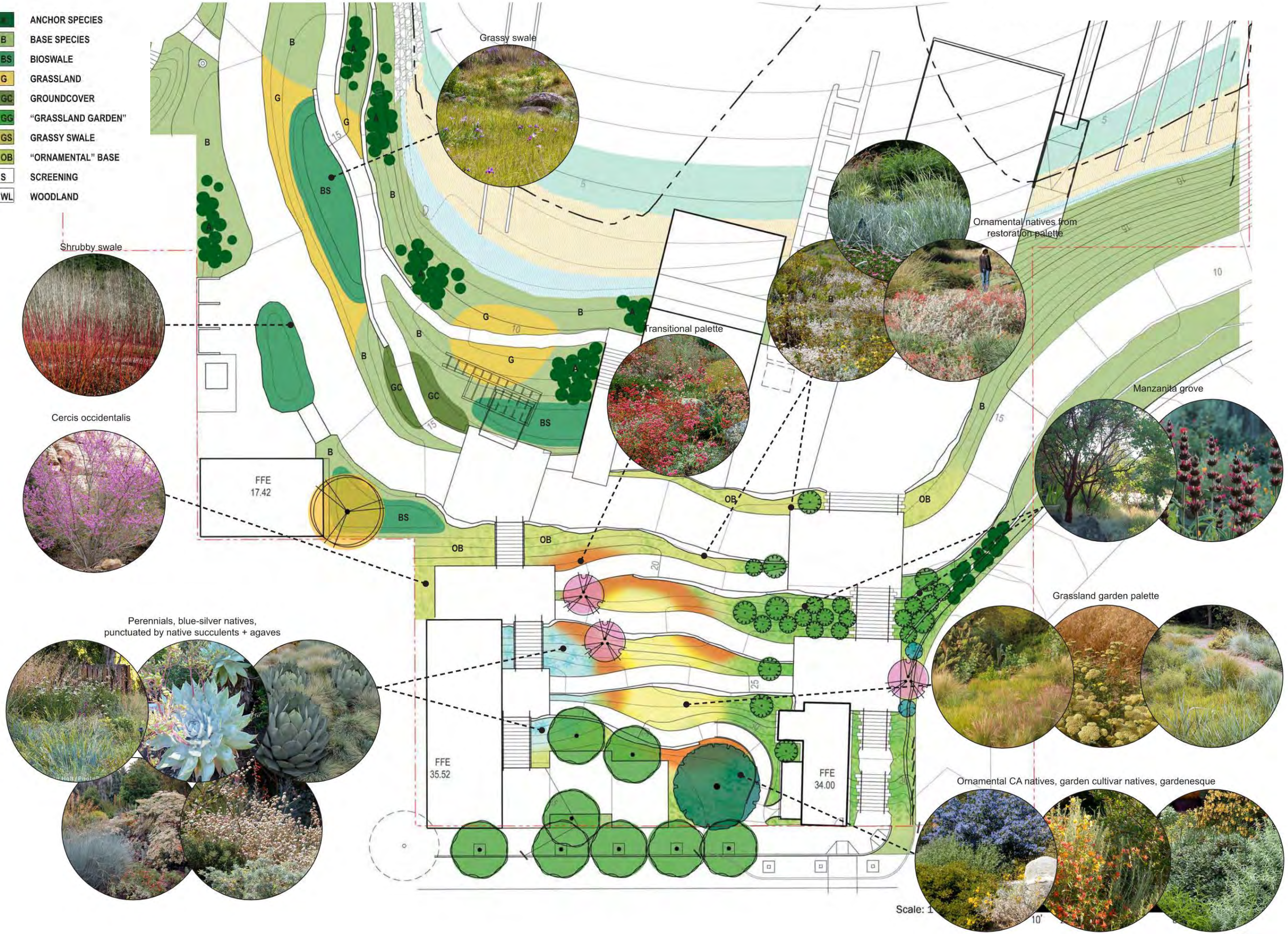


Bench Type 2: Timber Bulky



Movable Seating: Colorful and Varied

- ANCHOR SPECIES
- BASE SPECIES
- BIOSWALE
- GRASSLAND
- GROUNDCOVER
- "GRASSLAND GARDEN"
- GRASSY SWALE
- "ORNAMENTAL" BASE
- SCREENING
- WOODLAND



- ANCHOR SPECIES
- BASE SPECIES
- BIOSWALE
- GRASSLAND
- GROUNDCOVER
- "GRASSLAND GARDEN"
- GRASSY SWALE
- "ORNAMENTAL" BASE
- SCREENING
- WOODLAND



SHORELINE RESTORATION:

TRANSITION ZONE



HIGH + MID MARSH



LOW MARSH



UPLAND RESTORATION:

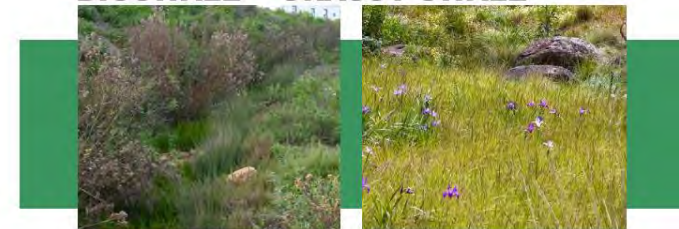
ANCHOR SPECIES



BASE SPECIES



BIOSWALE + GRASSY SWALE



GRASSLAND



GROUNDCOVER



ORNAMENTAL BASE





BOATHOUSE

RESTROOM

MAINTENANCE BUILDING

SHOP BUILDING

FOOD PAVILION

SHIPWRIGHT'S COTTAGE



SHIPWRIGHT'S COTTAGE



VIEW FROM INNES AVENUE



VIEW FROM GRIFFITH STREET



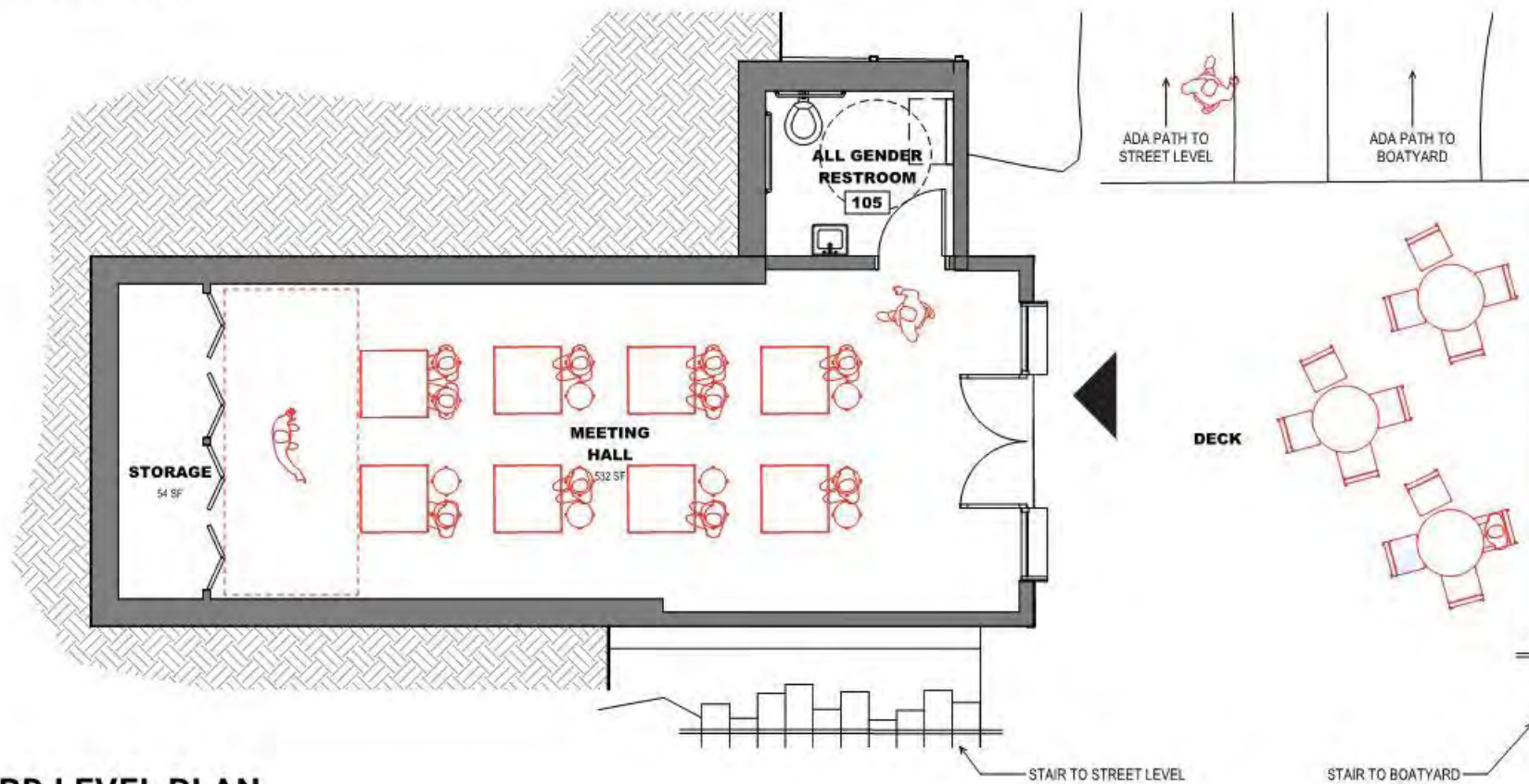


STREET LEVEL PLAN

PROGRAM



Street Level: Welcome Center / Warming Hut with Gallery / Interpretive Space



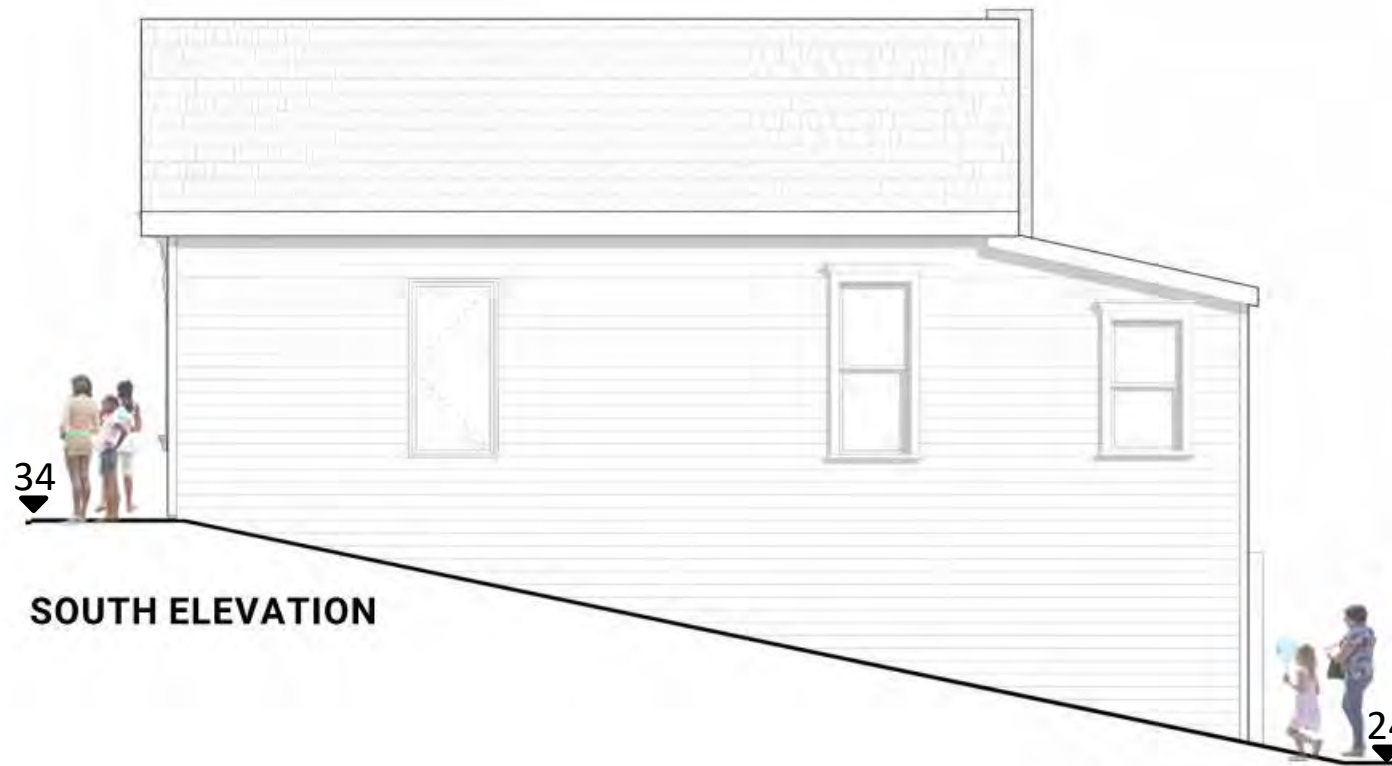
BOATYARD LEVEL PLAN



Boatyard Level: Community Technology Classroom / Small Community Gatherings



WEST ELEVATION (INNES AVE.)



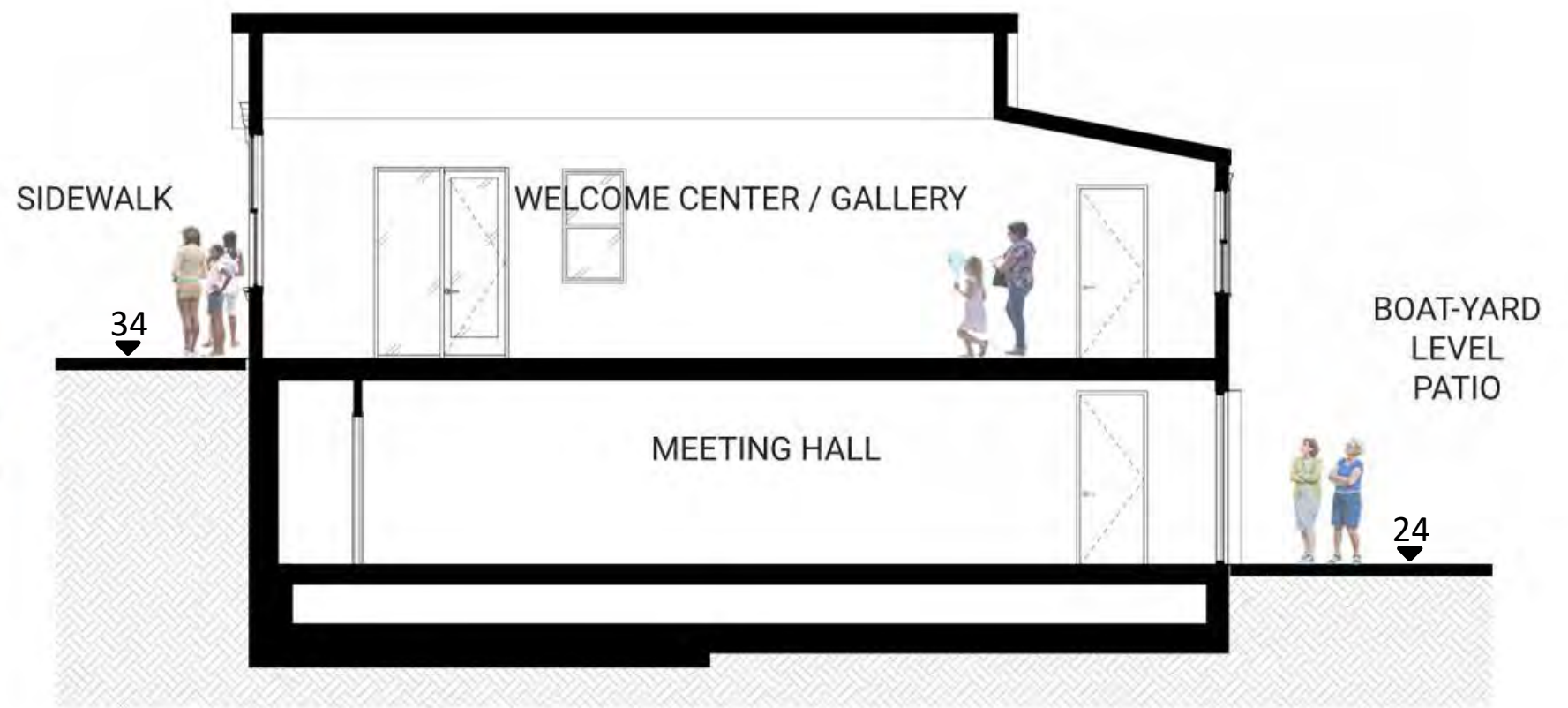
SOUTH ELEVATION



EAST ELEVATION



NORTH ELEVATION



E-W BUILDING SECTION



EXTERIOR - RESTORED FEATURES
INTERIOR - NATURAL WOOD



WALLS - RESTORED WOOD SIDING



ROOF - COMPOSITE SHINGLES



NEW OPENINGS - WOOD FRAME
WITH EXTERIOR COATING

FOOD PAVILION

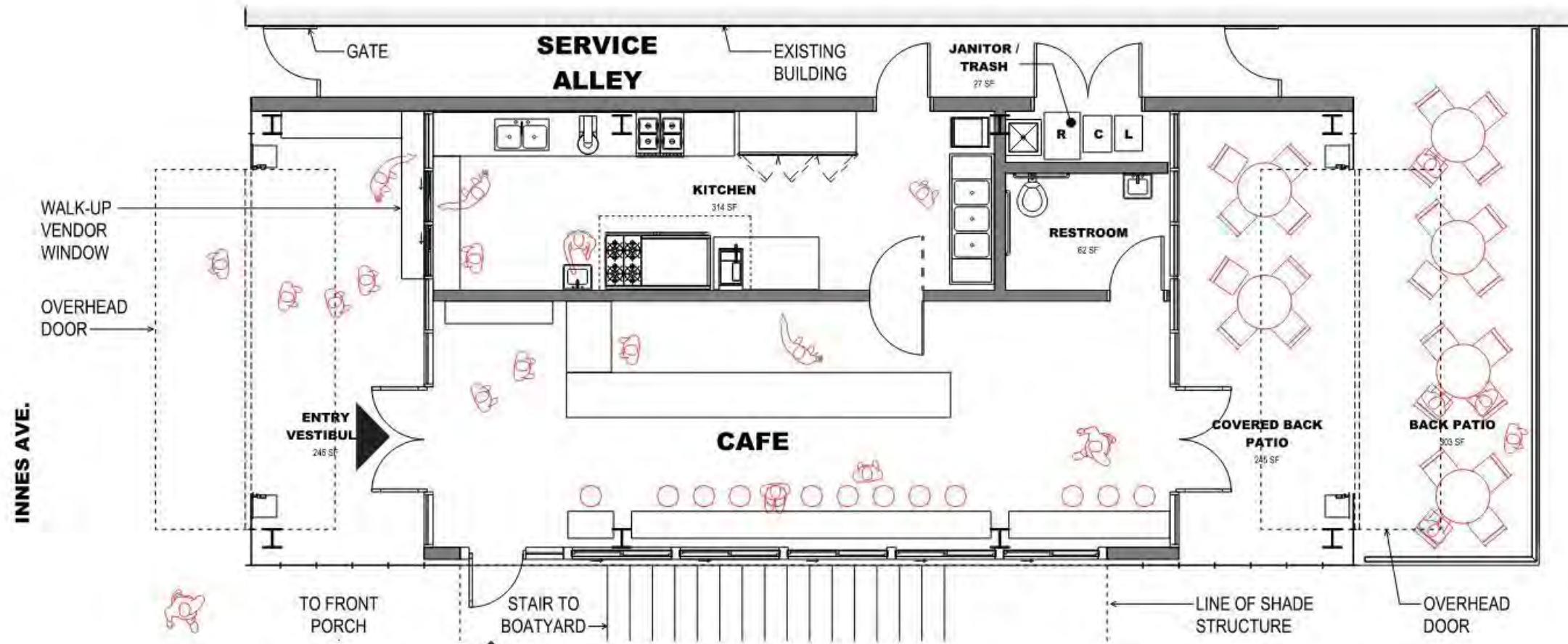


VIEW FROM INNES AVENUE

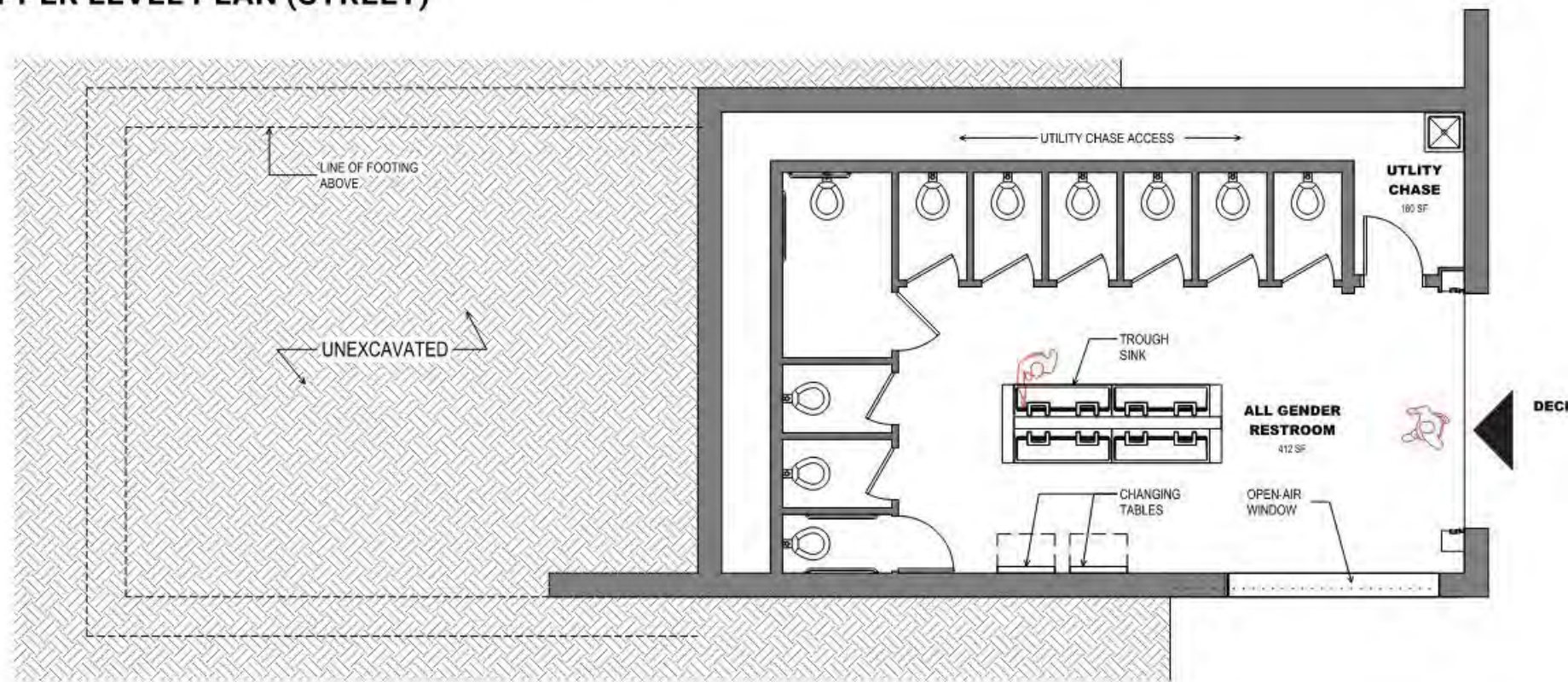


VIEW FROM BOATYARD





UPPER LEVEL PLAN (STREET)

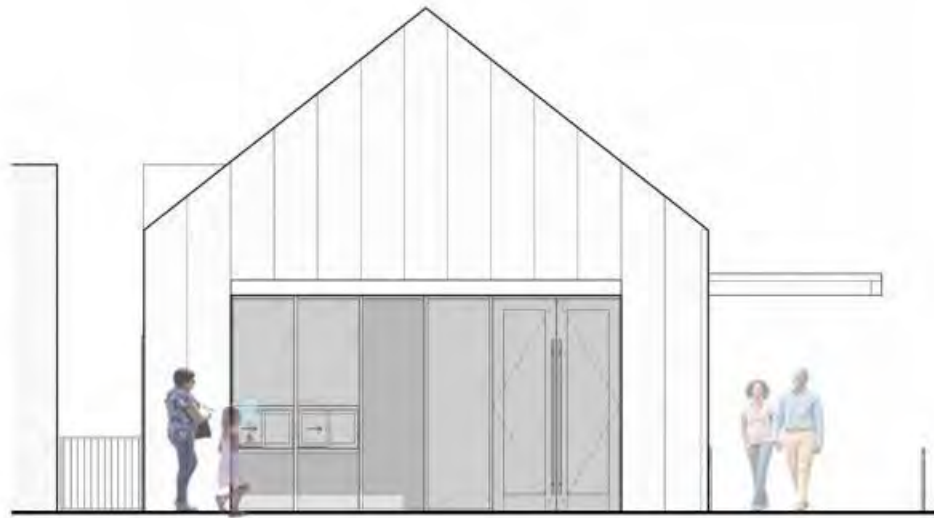


LOWER LEVEL PLAN

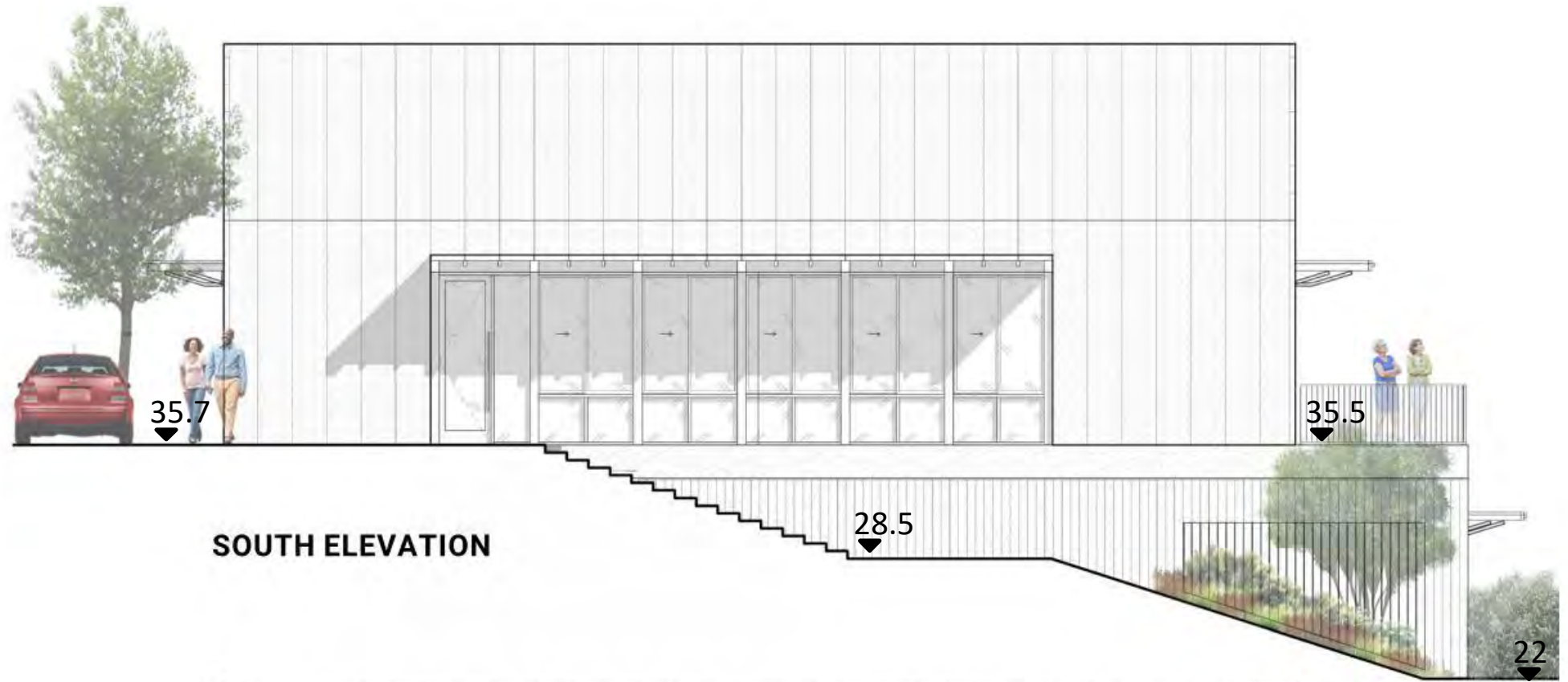
PROGRAM



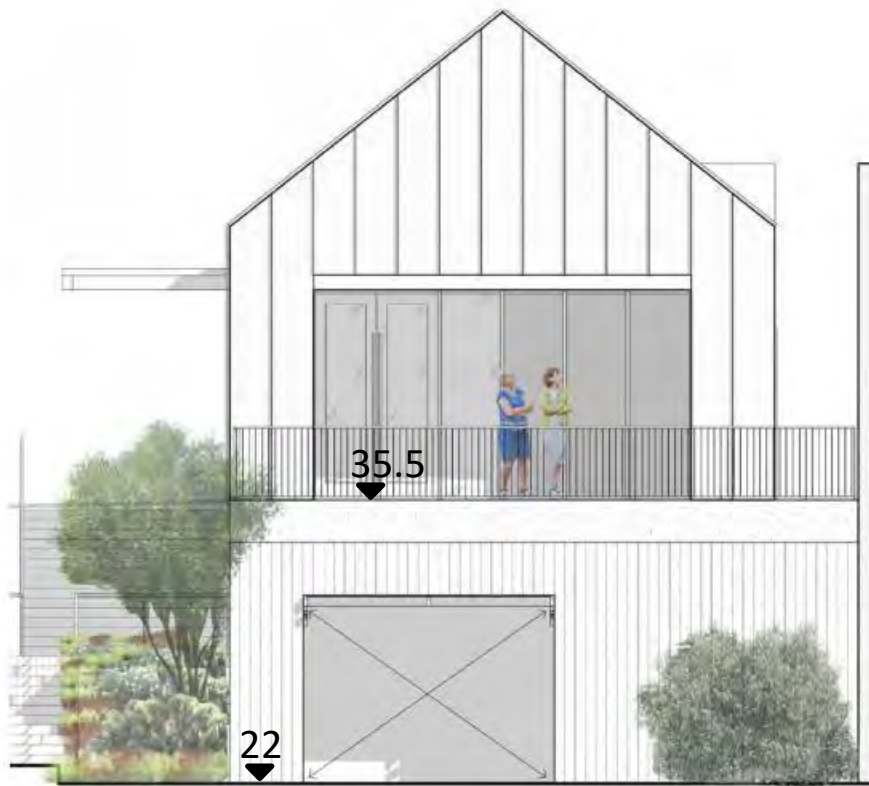
Street Level: Food Concession
Primary Vendor w/ Pop-up Vendor



WEST ELEVATION (INNES AVE.)



SOUTH ELEVATION



EAST ELEVATION



E-W BUILDING SECTION

SHOP BUILDING

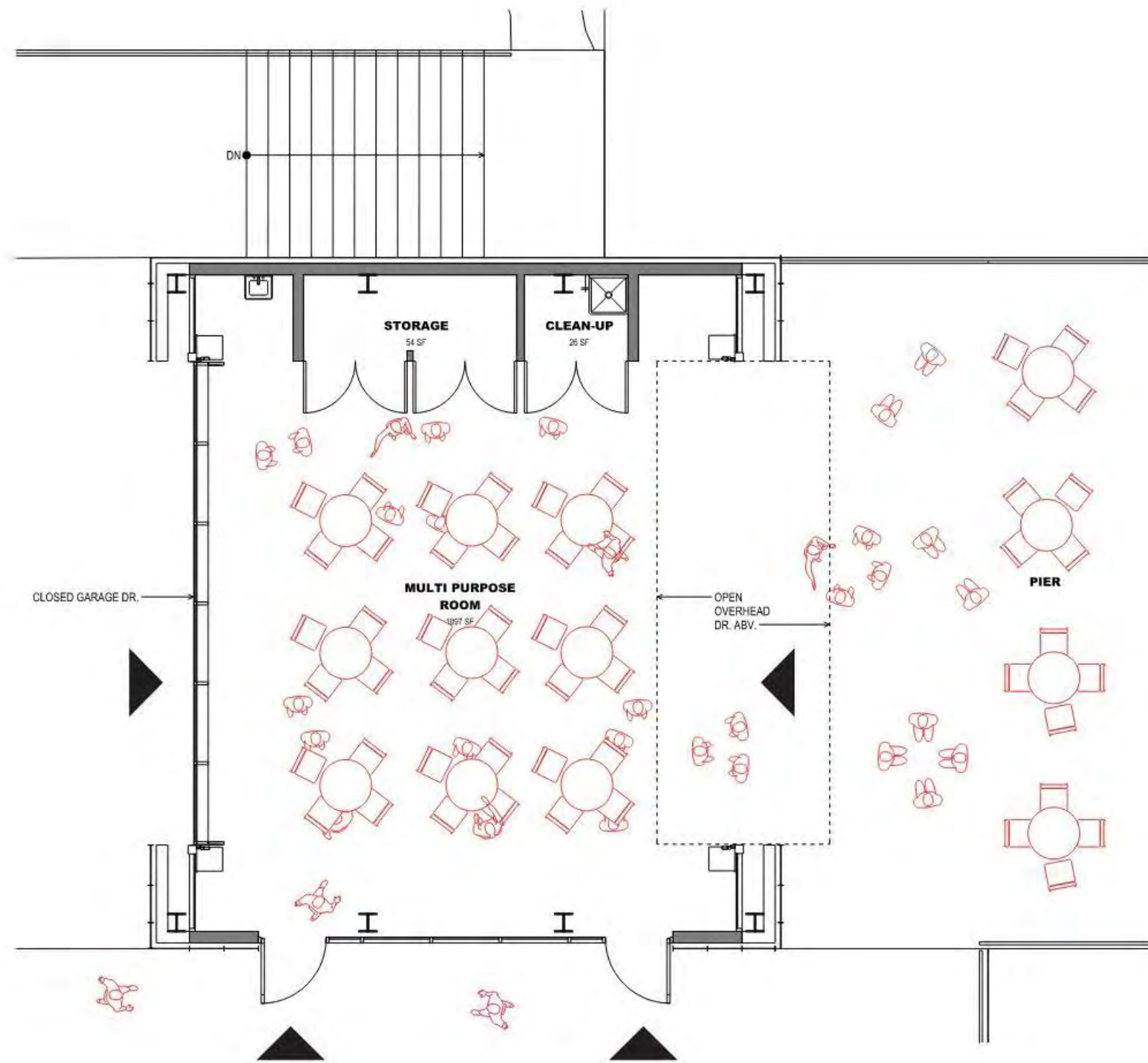


VIEW FROM BAY TRAIL



VIEW TOWARDS THE BAY



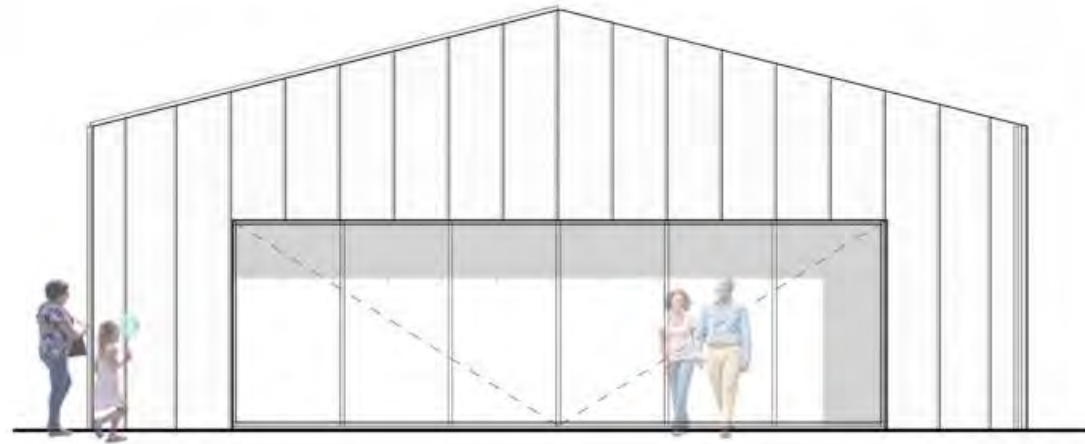


FLOOR PLAN

PROGRAM



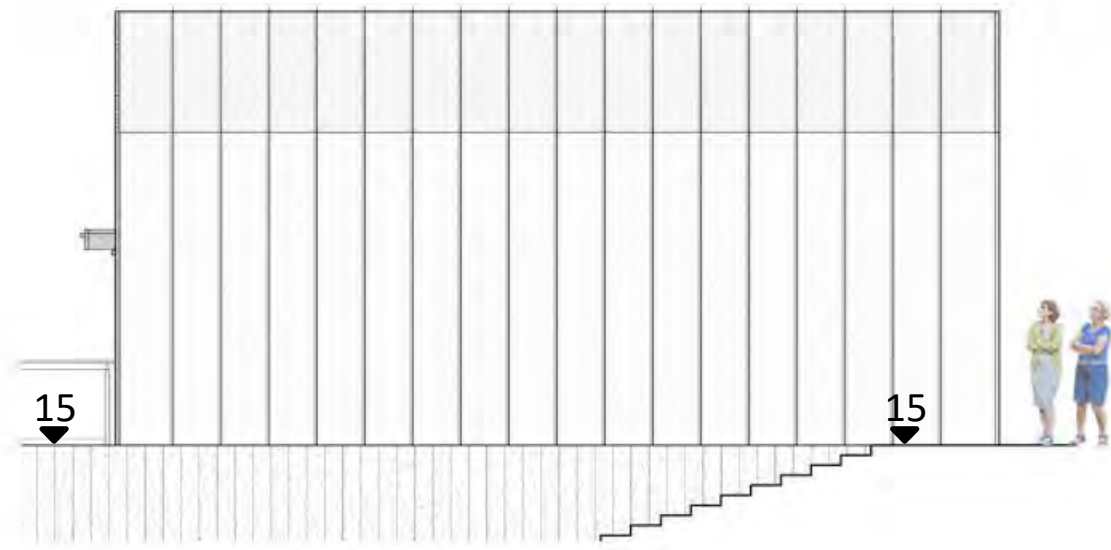
Food Community Workshop, Summer Camp, Classes, Performances



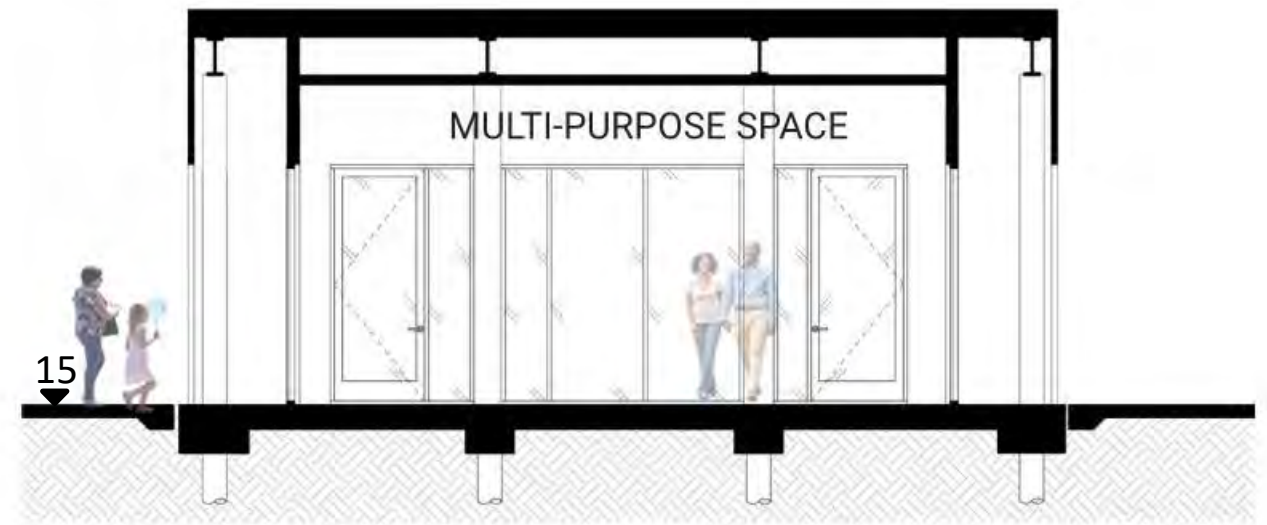
EAST AND WEST ELEVATIONS



SOUTH ELEVATION



NORTH ELEVATION

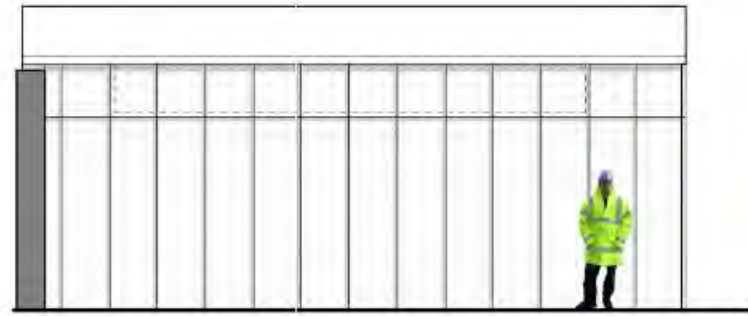


E-W BUILDING SECTION

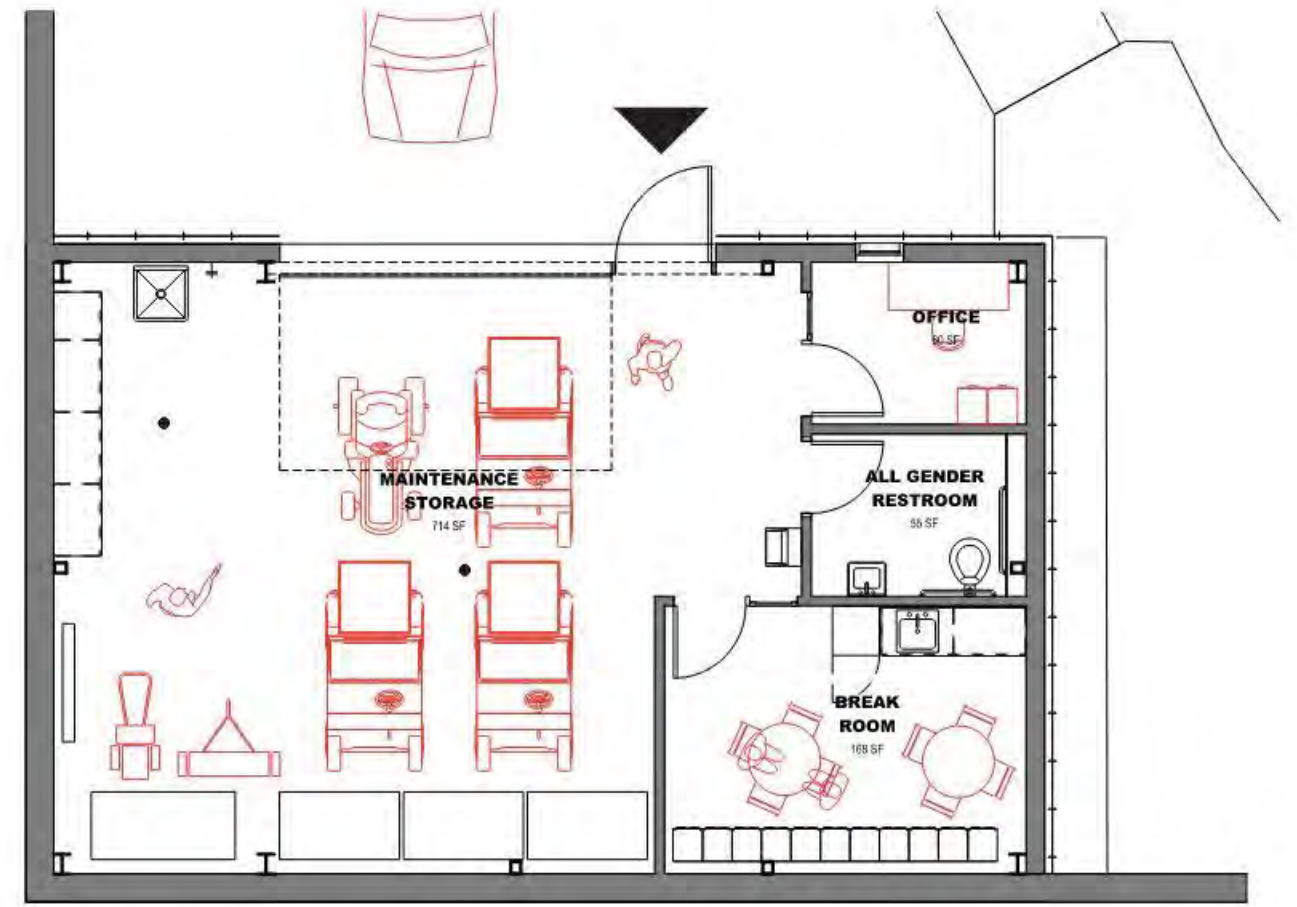
MAINTENANCE BUILDING



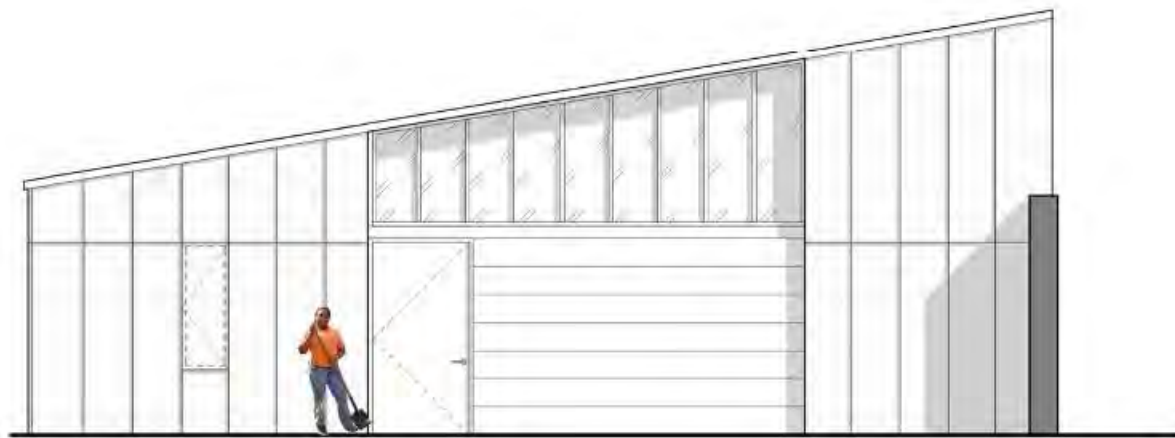
VIEW FROM BAY TRAIL



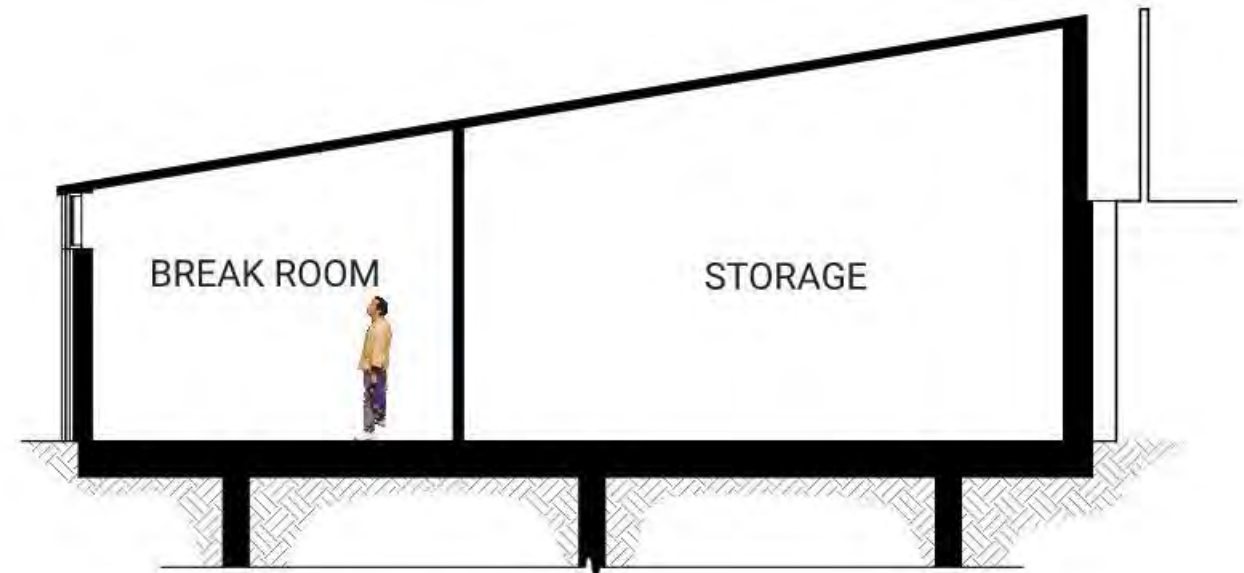
SOUTH ELEVATION



FLOOR PLAN



EAST ELEVATION

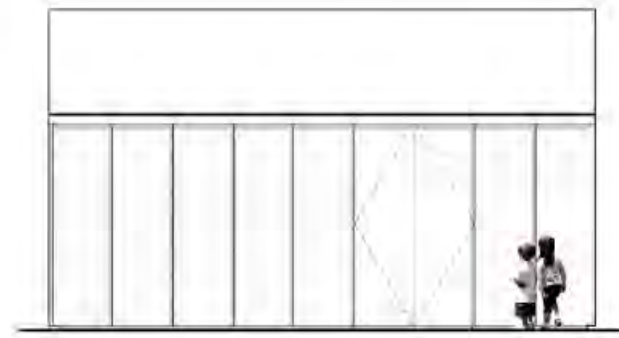


N-S BUILDING SECTION

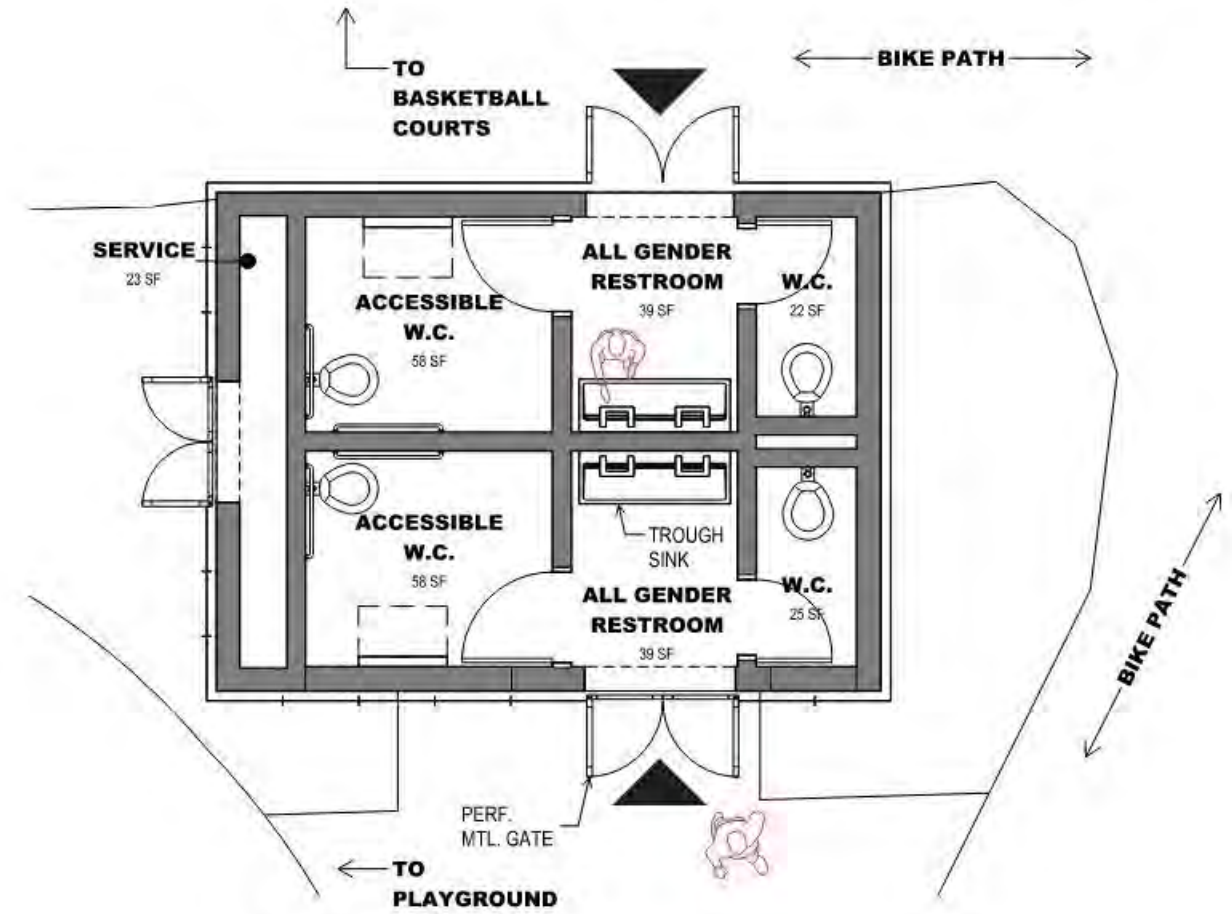
RESTROOM BUILDING



VIEW FROM PLAYGROUND



SOUTH ELEVATION



FLOOR PLAN



WEST ELEVATION



N-S BUILDING SECTION

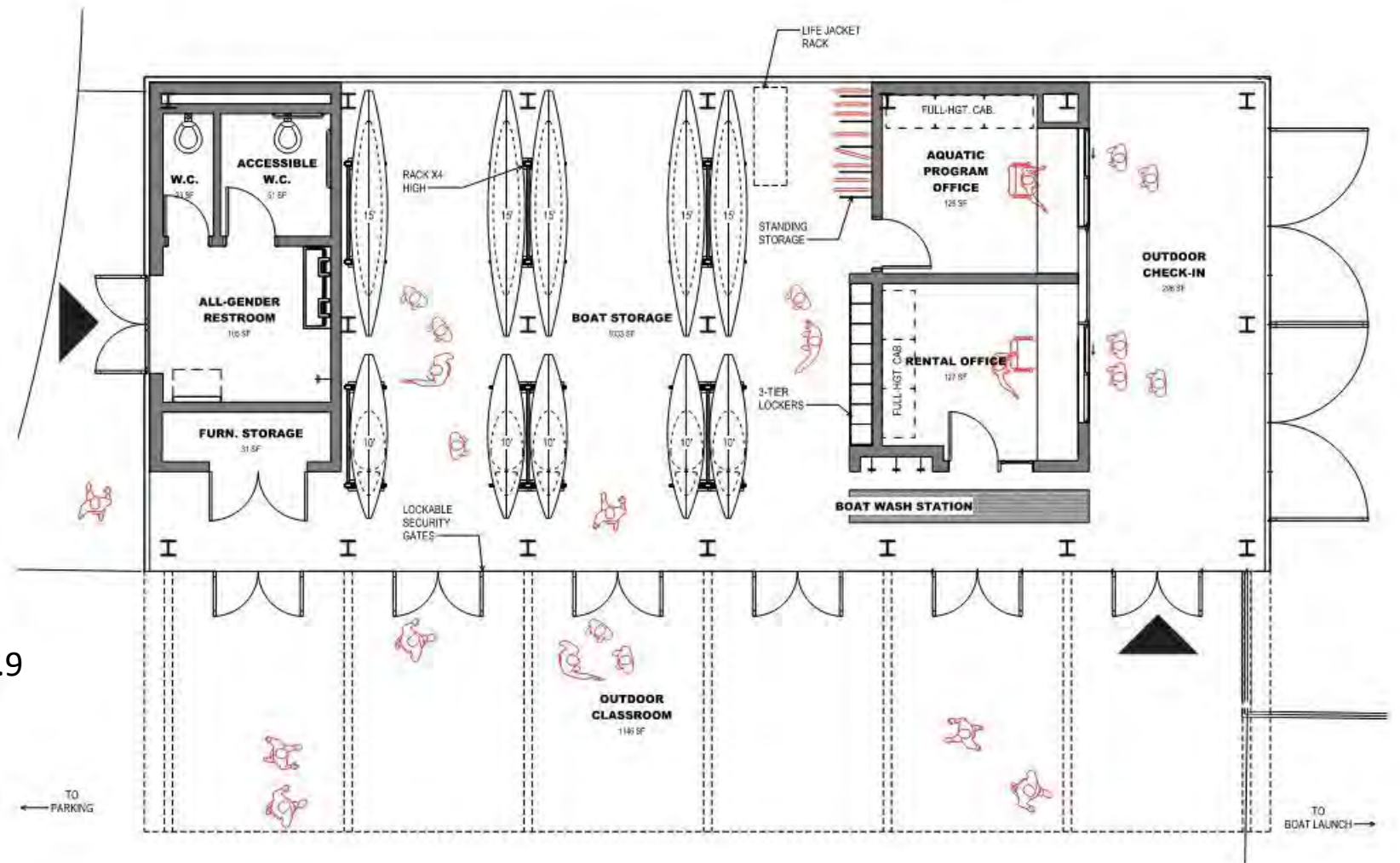
BOATHOUSE



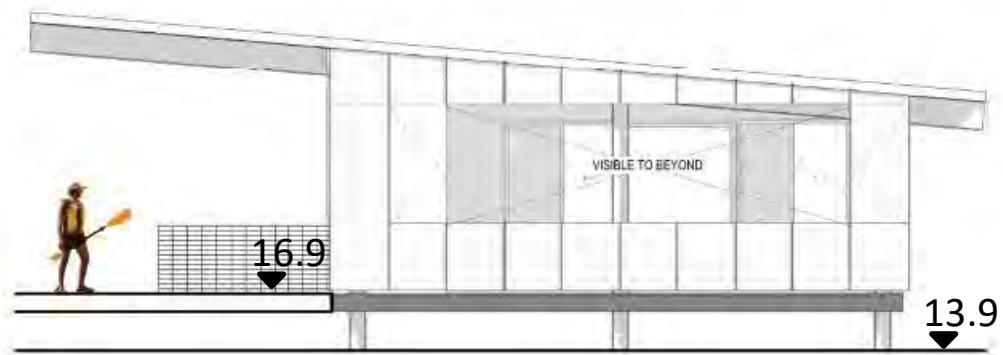
VIEW FROM DOCK



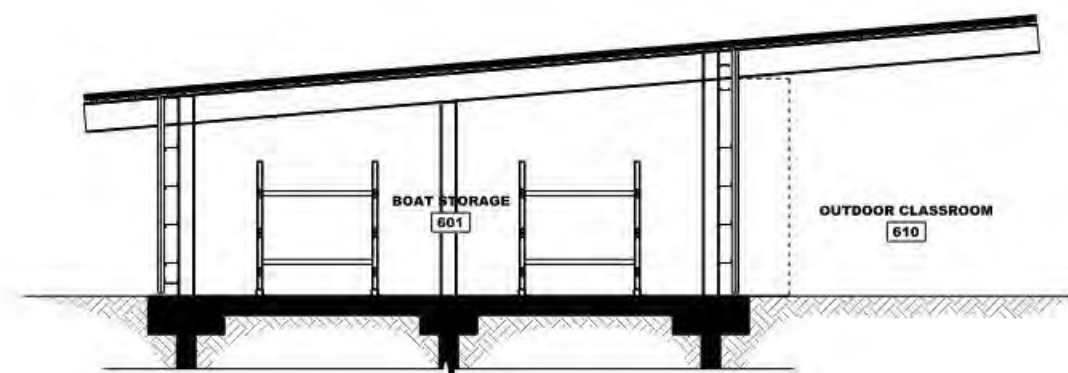
SOUTH ELEVATION



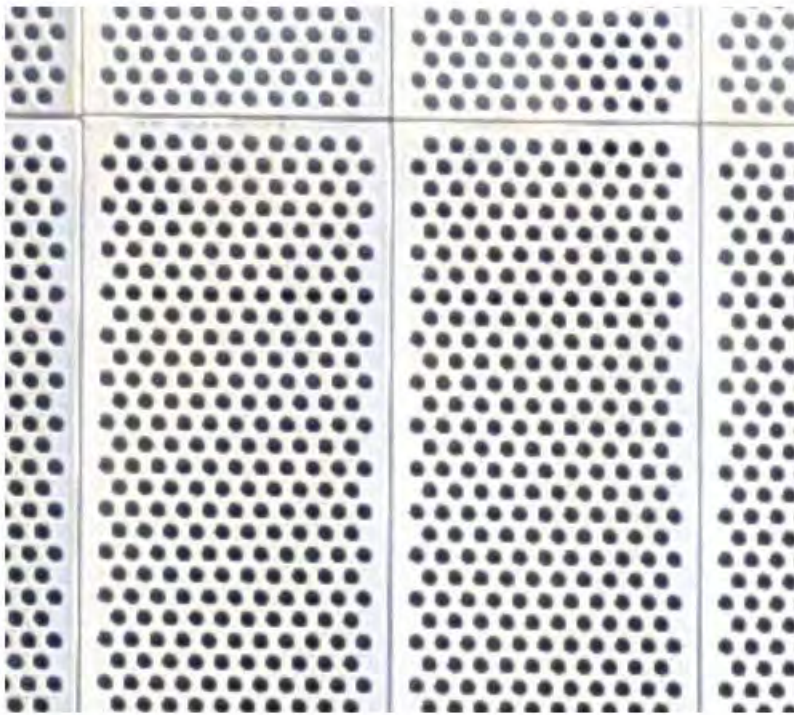
FLOOR PLAN



EAST ELEVATION



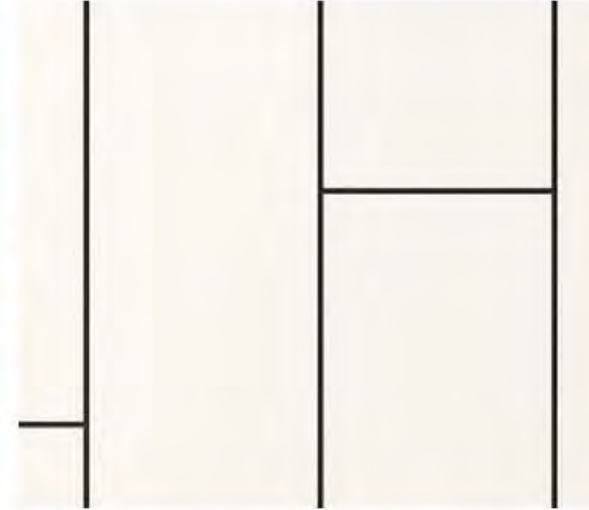
N-S BUILDING SECTION



**ROOF - INSULATED ALUM. STANDING SEAM
WALL & ROOF CLADDING - PERFORATED
METAL OVER BLACK MINERAL BOARD**



OPENINGS - ALUMINUM FRAME

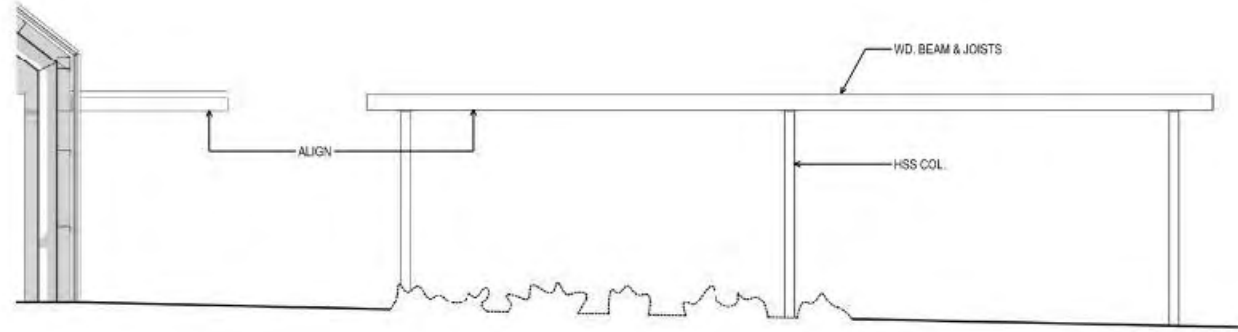


**WALLS - CEMENT BOARD &
BOARD-FORMED CONCRETE**

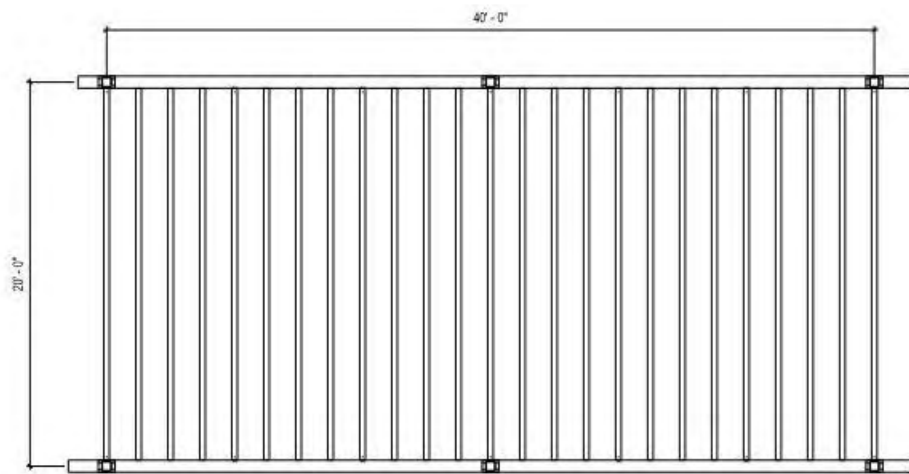


INTERIOR - NATURAL WOOD

INNES EDGE



LONGITUDINAL ELEVATION

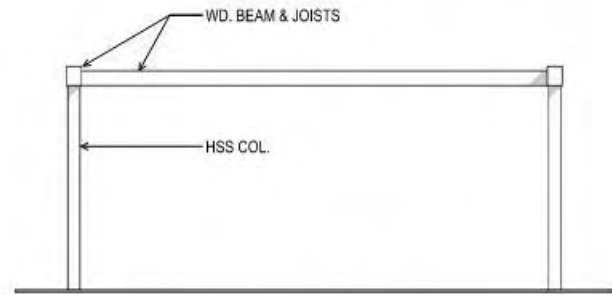


REFLECTED CEILING PLAN

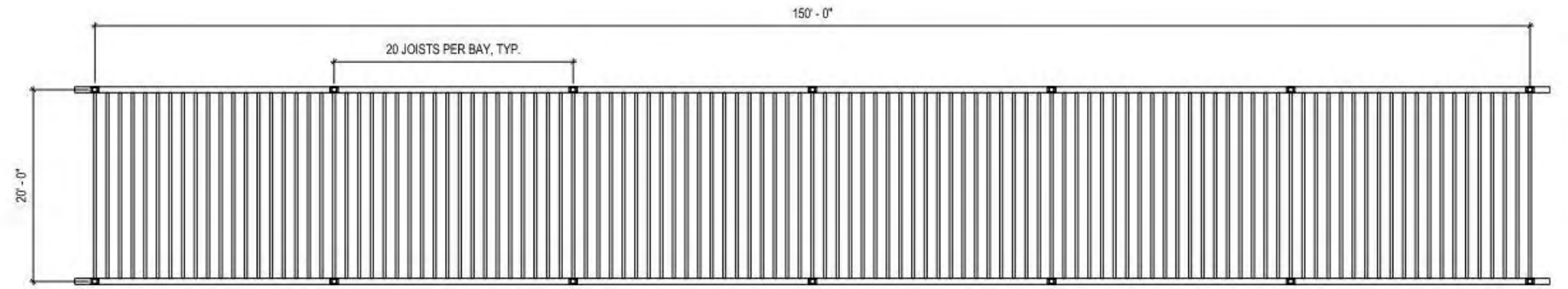


VIEW NORTHEAST TO BAY

COOKOUT TERRACE



CROSS ELEVATION



REFLECTED CEILING PLAN



VIEW EAST TO BASKETBALL COURT



Schematic Design CDR Feedback

- ✓ Provide material choices and colors for all architecture
- ✓ Show spot elevations on sections
- ✓ Clarify location of railings

Design Evolution from Schematic Design

- Boatyard configuration refined to further open up natural shoreline experience and waterfront views
- Innes Edge right-sized, structure designed to frame views into the park
- Pier 2 chosen as SFAC art opportunity due to location and visibility
- Bay Trail further defined from Boatyard Plaza to increase pedestrian and cyclist safety
- Hunters Point entry designed to create social spaces along street
- Boathouse deck increased to provide staging ground and educational space
- Floating dock designed for outdoor classroom space as well as active and passive recreation