

330 East Molino Road
Palm Springs CA 92262
760 416 3061
jim.isermann@ucr.edu
jimisermann.com



TC&FSD Art Conceptual proposal

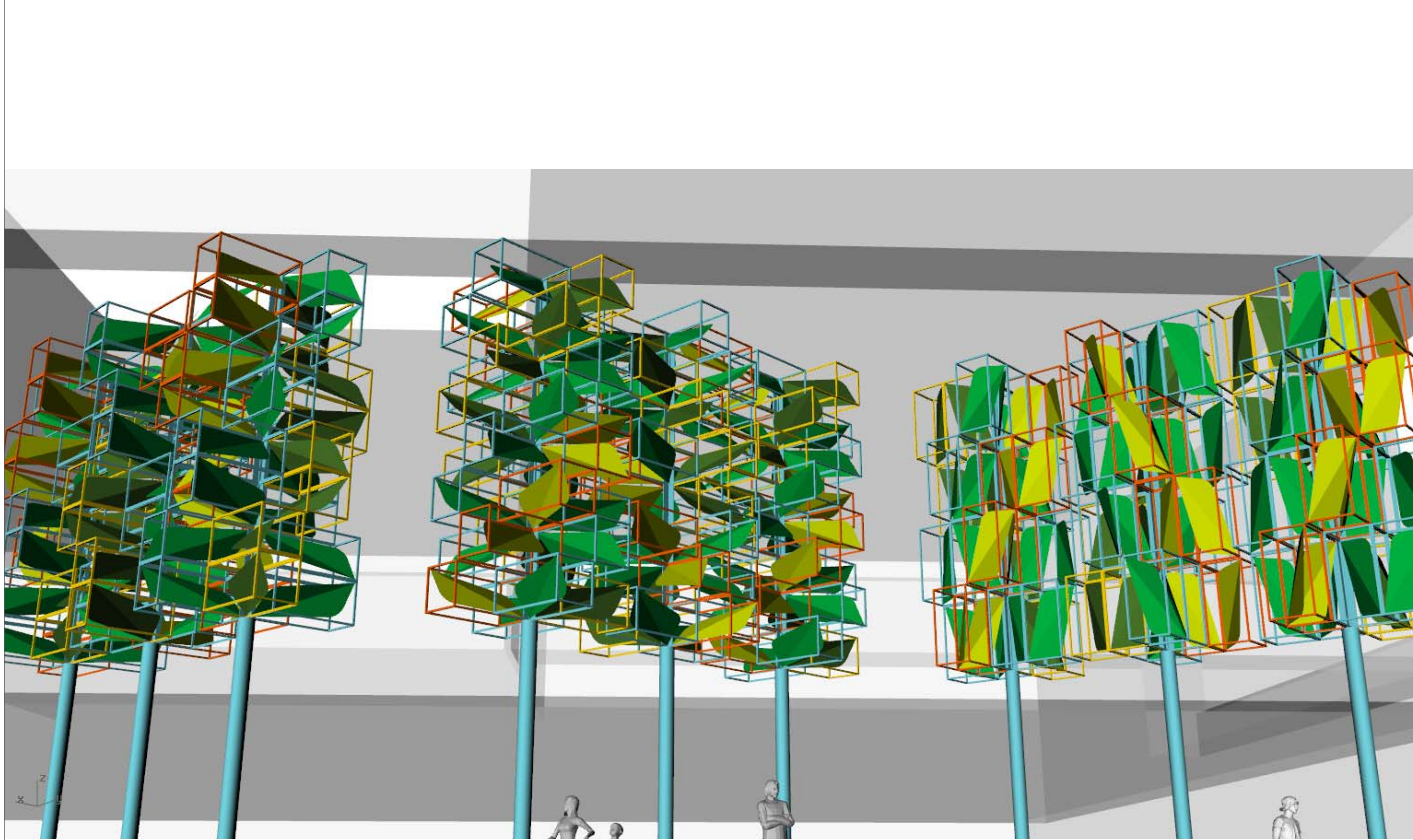
Generally my site-specific artwork responds the physical conditions and function of the architecture the work will be seen against. I have a long held interest how patterns are created and specifically the repetition of modular elements. The complex organization of modules created by the economy of the simple change of orientation and color assignment. This complexity in the long term is most appreciated by the occupants of the building or site. Over time the organization of the modules reveal themselves. What once may appear random or an overall pattern breaks down into logical systems of repetition.

In the case of TC&FSD we have a very blocky set of volumes that allow for a raised plaza on the corner of the Evans and Toland. What is most interesting to me and what is unique about the site is that the building will have little to no public access from that plaza. Folks working in the building for the most part will enter from the secure parking behind the building or a side entrance. The artwork will therefore be primarily experienced by the drive-by down Evans and secondarily experienced by the inhabitants from inside the buildings second and third floor common rooms. These conditions are what make the plaza the most logical site for the artwork. It is an incredible chance to locate an artwork and to scale it in such a way that it can be seen from a myriad of vantage points on the surrounding streets and hills and close up from those common spaces on the 2nd and 3rd floors.

My modules will be produced in two variations and I am currently focused on 3 different organizations of the modules to create a tree like volume with a strong relationship to helix structure. The space frames respond directly to the building's rectangular volumes and the organic folded leaf form contained by the box are in contrast to that primary geometry. The parallel rectangles with the compressed flattened plane vaguely suggest a sample between the glass slides used in microscopic viewing. Both the helix spiral and slide are not meant to illustrate the science conducted in the building but to more poetically resonate with their related systems and organization.

My suggestion for the plaza concrete delineation is to enlarge the 3 basic module orientations as a guide to the complex organization above. They will also add to and complicate the elevated views of the plaza. The finishes will be developed in collaboration with the relevant landscape architects as the project moves forward.

Jim Isermann
January 10, 2018



NO.	ISSUE	DATE
1	FOR REVIEW	3 January 2018
2	FOR FABRICATION	

ISERMANN SAN FRANCISCO
SAN FRANCISCO CA

[METALAB]
ARCHITECTURE + DIGITAL FABRICATION
20 N. Sampson
Houston, Texas 77003
713.426.3640
www.metalabstudio.com
info@metalabstudio.com

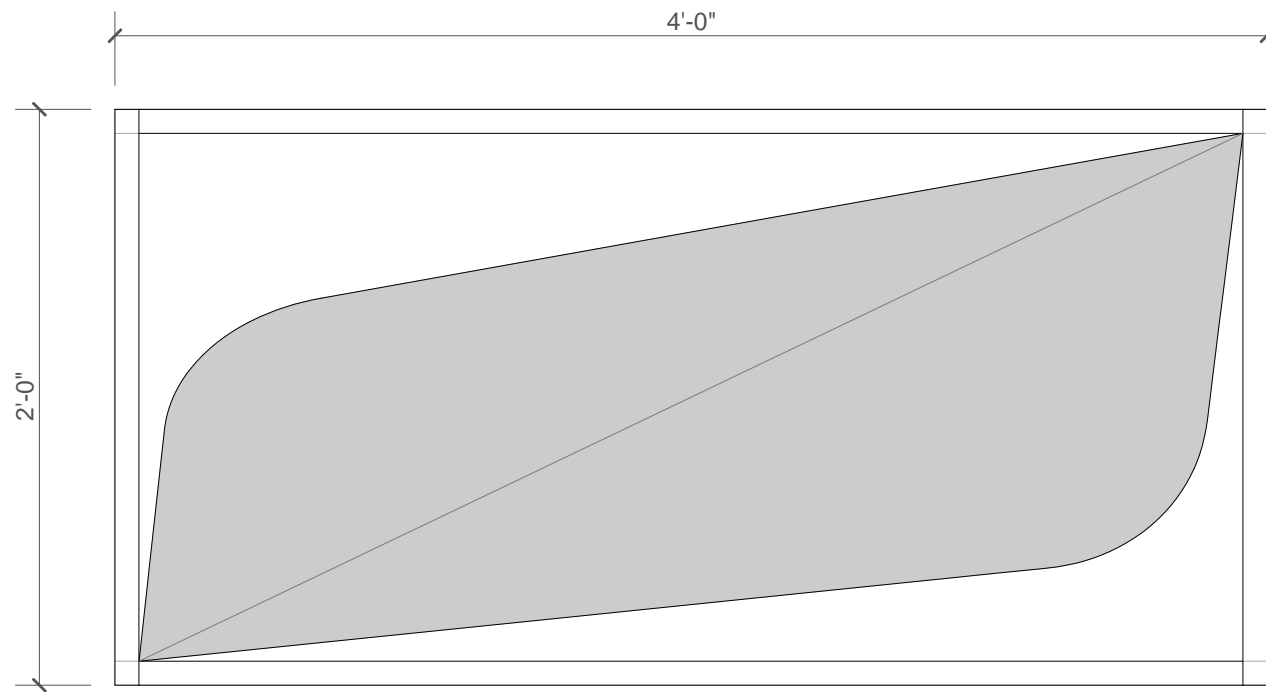
ISF

ISERMANN SAN FRANCISCO

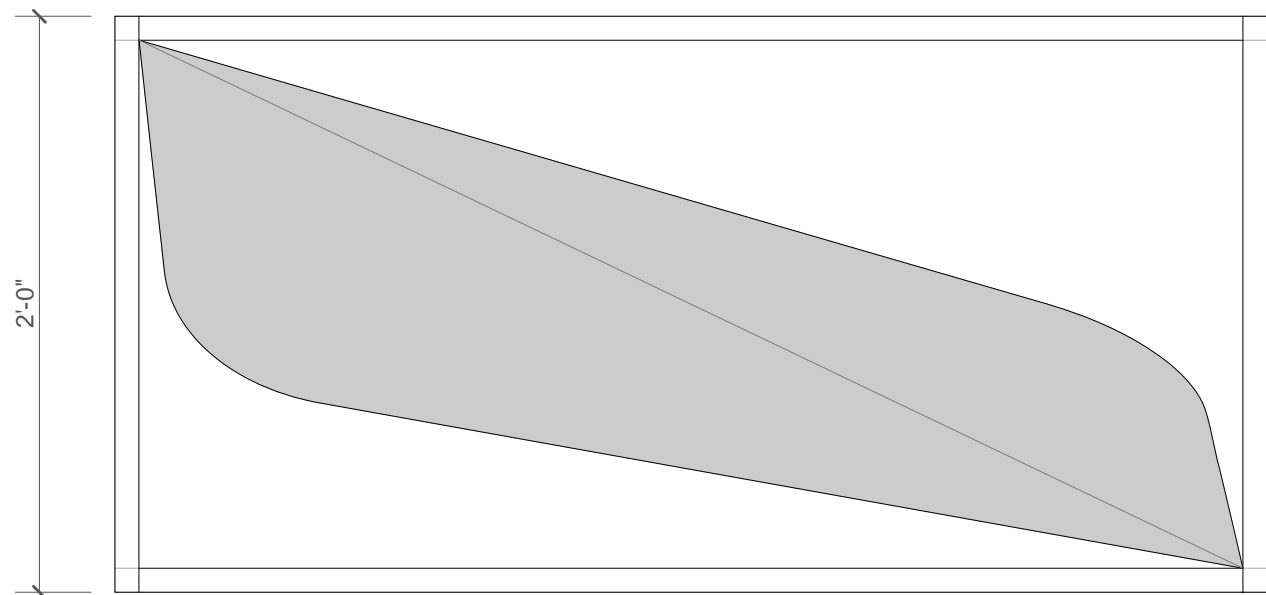
FOR REVIEW

ISF

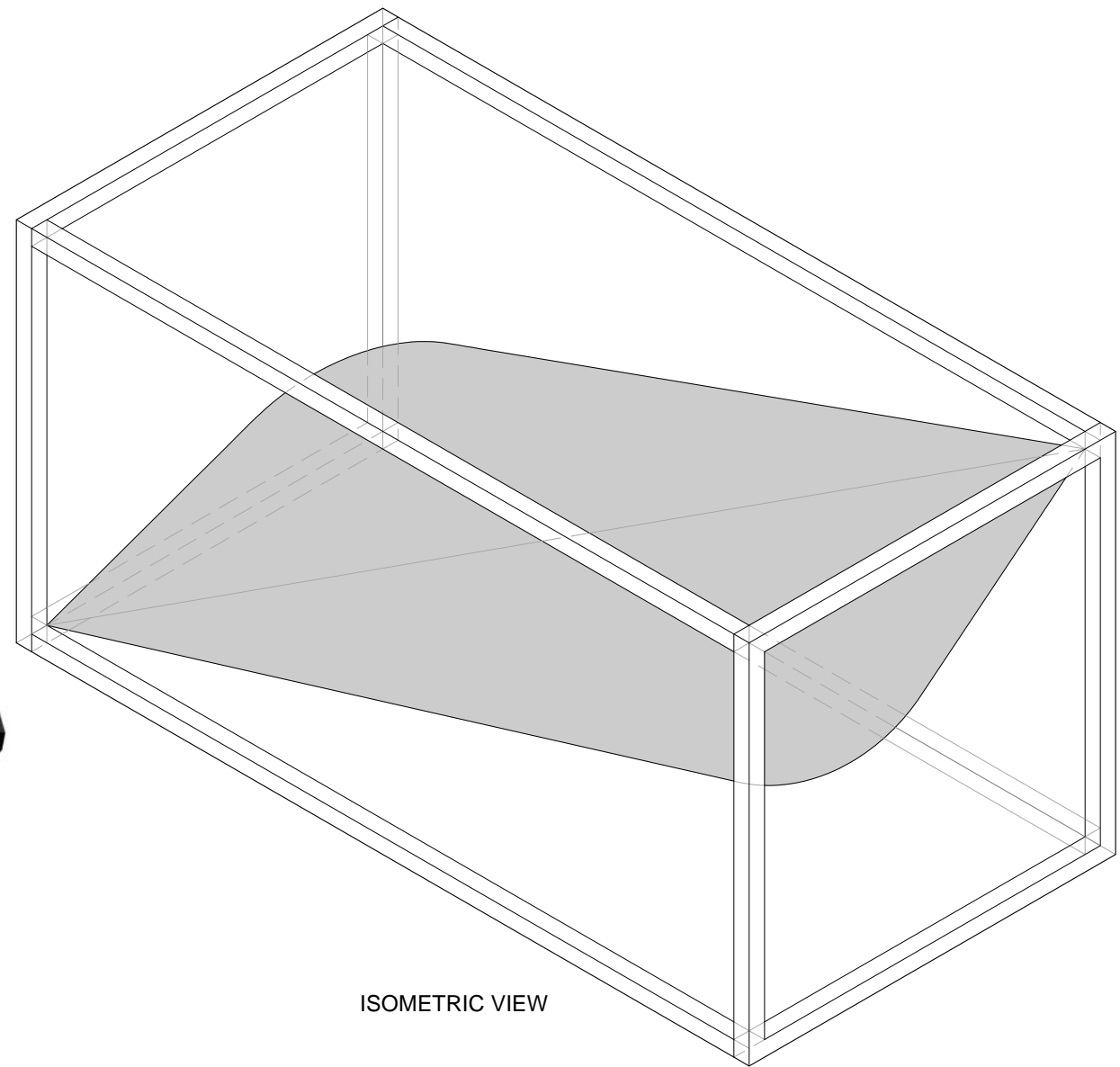
ISF



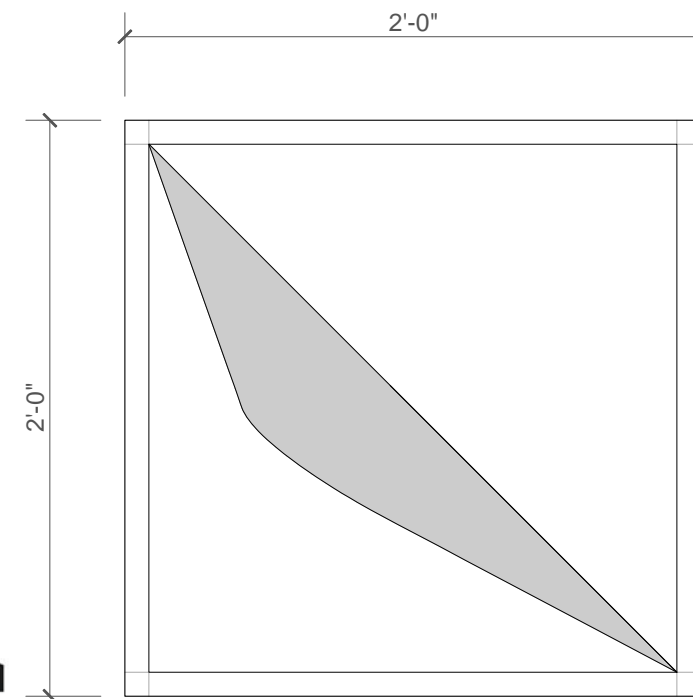
TOP VIEW



FRONT VIEW



ISOMETRIC VIEW



SIDE VIEW

1 TYPICAL MODULE

SCALE: 1 - 1/2" = 1' - 0"

NO.	ISSUE	DATE
1	FOR REVIEW	3 January 2018
2	FOR FABRICATION	

ISERMANN SAN FRANCISCO
SAN FRANCISCO CA

[METALAB]
ARCHITECTURE + DIGITAL FABRICATION
20 N Sampson
Houston, Texas 77003
713.426.3640
www.metalabstudio.com
info@metalabstudio.com

ISFO

ISERMANN SAN FRANCISCO

FOR REVIEW

ISFO



GREEN 364
YELLOW 012



GREEN 354
BLUE 310



GREEN 389
ORANGE 165

1 COLOR SELECTION
SCALE: 1" = 1' - 0"

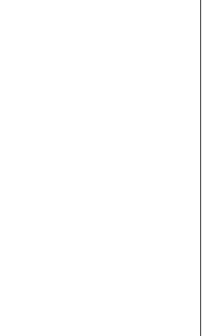
NO.	ISSUE	DATE
1	FOR REVIEW	3 January 2018
2	FOR FABRICATION	

ISERMANN SAN FRANCISCO
SAN FRANCISCO CA

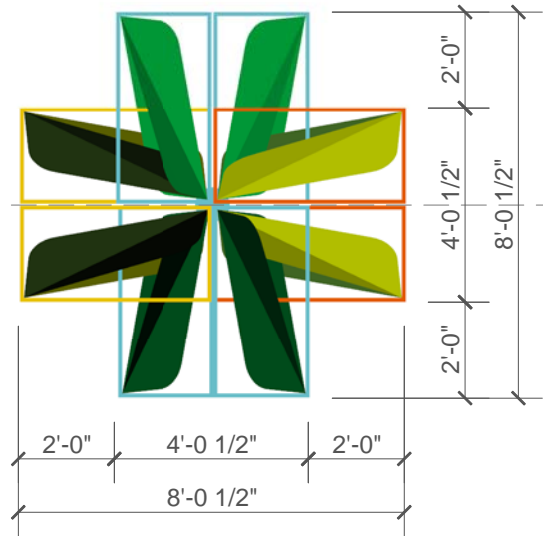
[METALAB]
ARCHITECTURE + DIGITAL FABRICATION
20 N. Sampson
Houston, Texas 77003
713.426.3640
www.metalabstudio.com
info@metalabstudio.com

ISF1

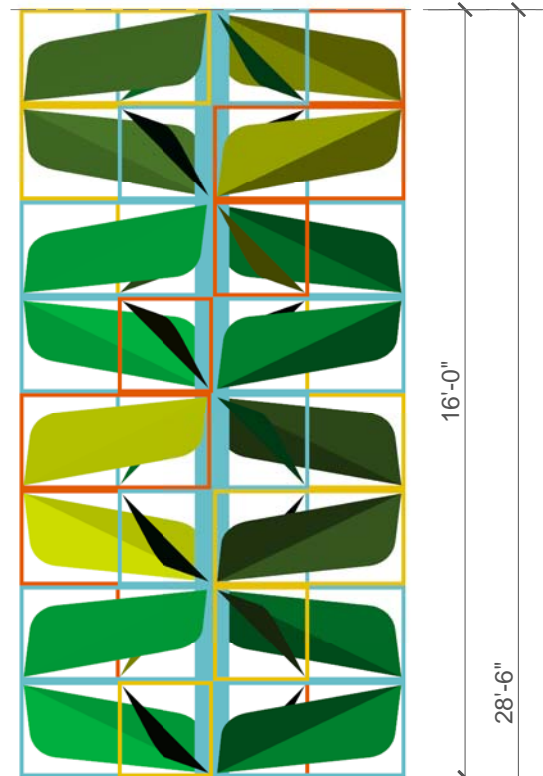
ISERMANN SAN FRANCISCO
FOR REVIEW



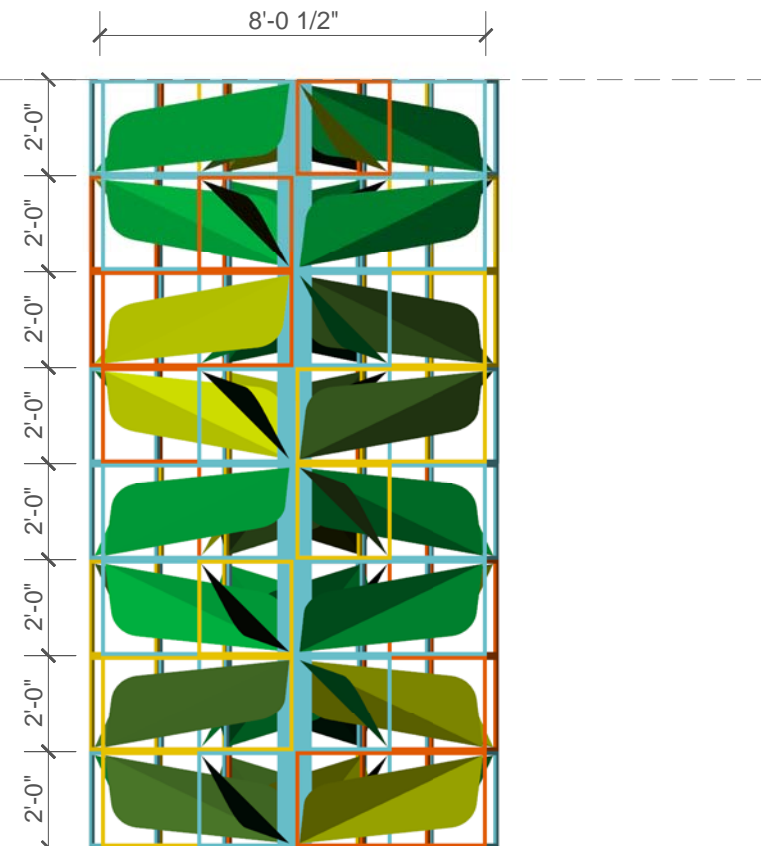
ISF1



PLAN VIEW



FRONT VIEW



SIDE VIEW



PERSPECTIVE

1 TREE TYPE A
SCALE: 1/4" = 1' - 0"

NO.	ISSUE	DATE
1	FOR REVIEW	3 January 2018
2	FOR FABRICATION	

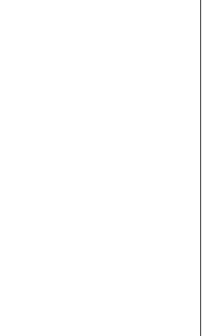
ISERMANN SAN FRANCISCO
SAN FRANCISCO CA

[METALAB]
ARCHITECTURE + DIGITAL FABRICATION
www.metalabstudio.com
20 N. Sampson Houston, Texas 77003
713.426.3640
info@metalabstudio.com

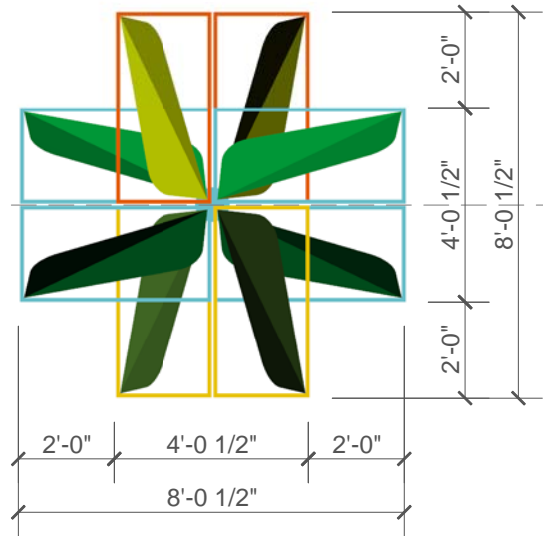
ISF2

ISERMANN SAN FRANCISCO

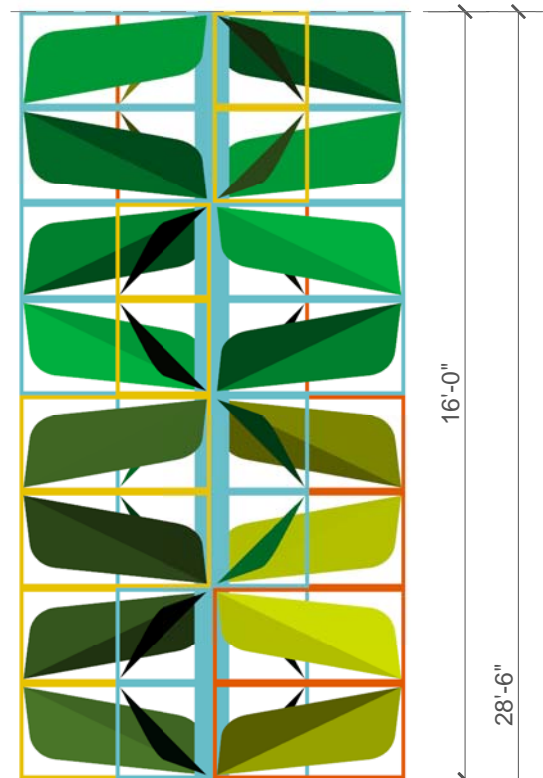
FOR REVIEW



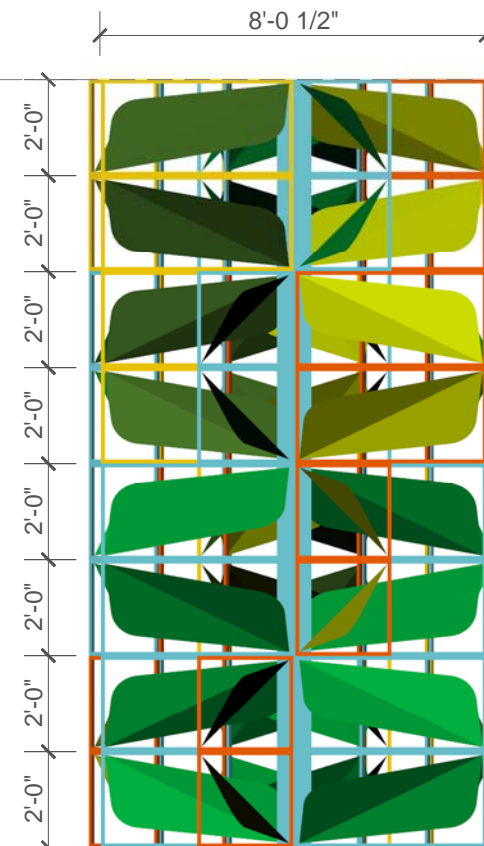
ISF2



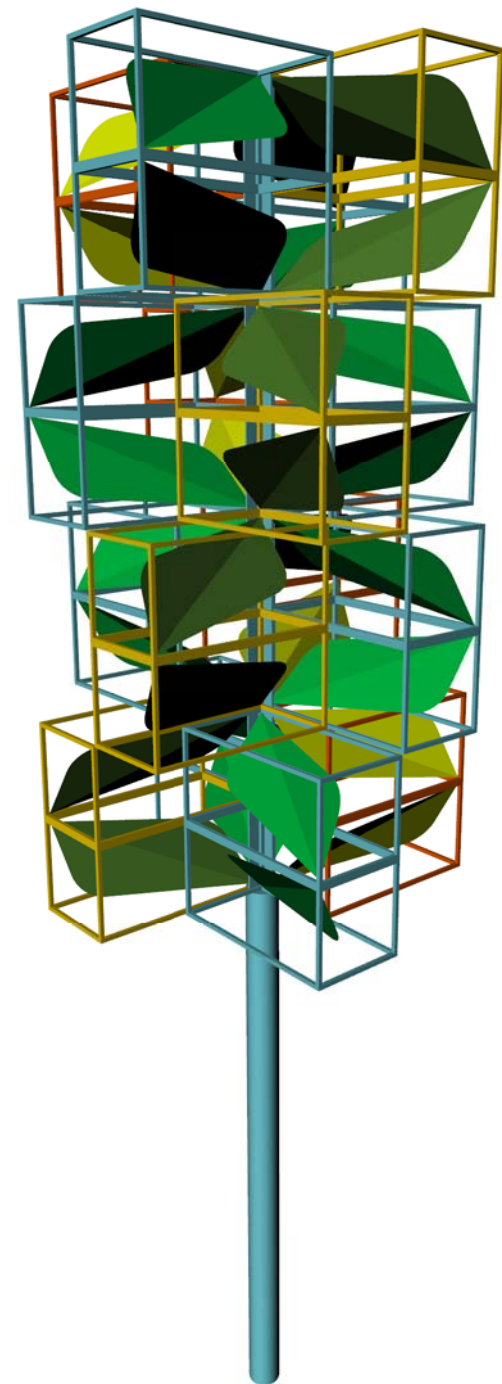
PLAN VIEW



FRONT VIEW



SIDE VIEW



PERSPECTIVE

1 TREE TYPE B
SCALE: 1/4" = 1' - 0"

NO.	ISSUE	DATE
1	FOR REVIEW	3 January 2018
2	FOR FABRICATION	

ISERMANN SAN FRANCISCO
SAN FRANCISCO CA

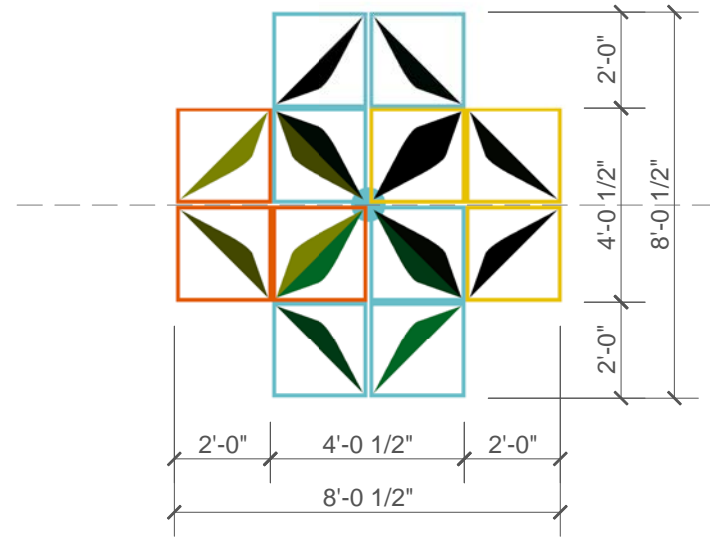
[METALAB]
ARCHITECTURE + DIGITAL FABRICATION
20 N. Sampson
Houston, Texas 77003
713.426.3640
www.metalabstudio.com
info@metalabstudio.com

ISF3

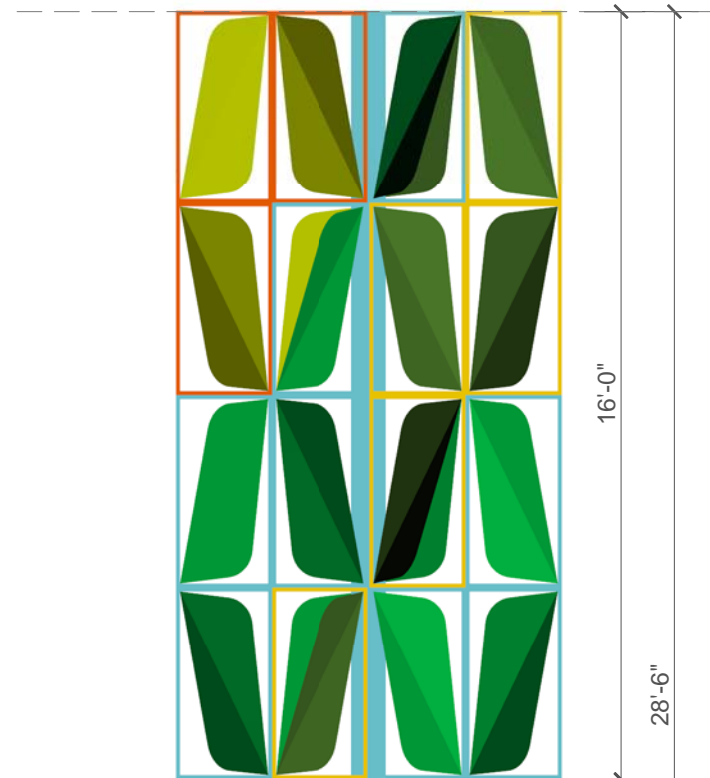
ISERMANN SAN FRANCISCO

FOR REVIEW

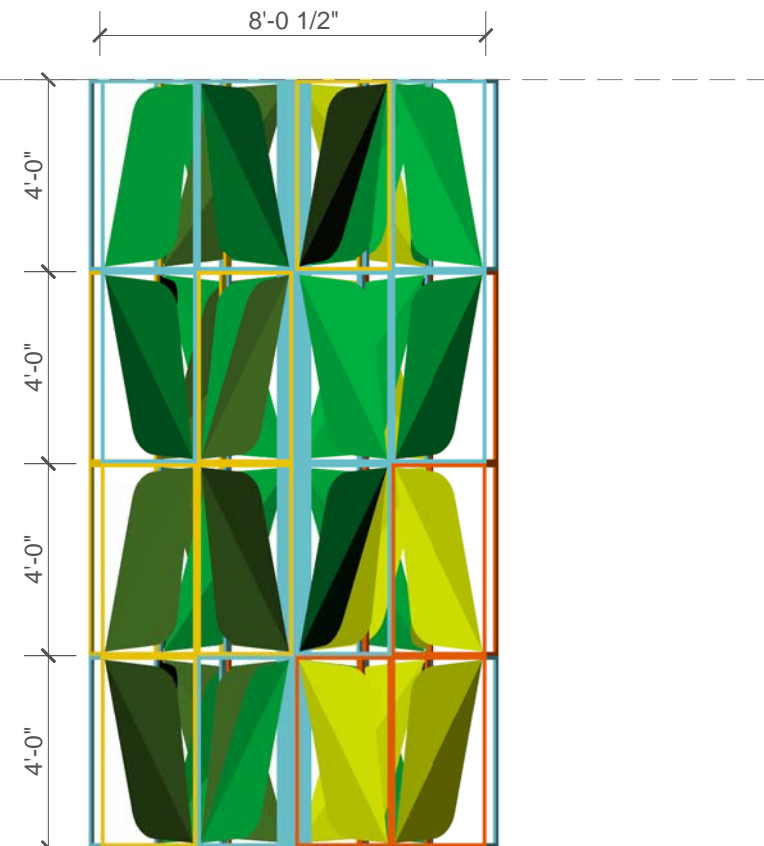
ISF3



PLAN VIEW



FRONT VIEW



SIDE VIEW



PERSPECTIVE

1 TREE TYPE C
SCALE: 1/4" = 1' - 0"

NO.	ISSUE	DATE
1	FOR REVIEW	3 January 2018
2	FOR FABRICATION	

ISERMANN SAN FRANCISCO
SAN FRANCISCO CA

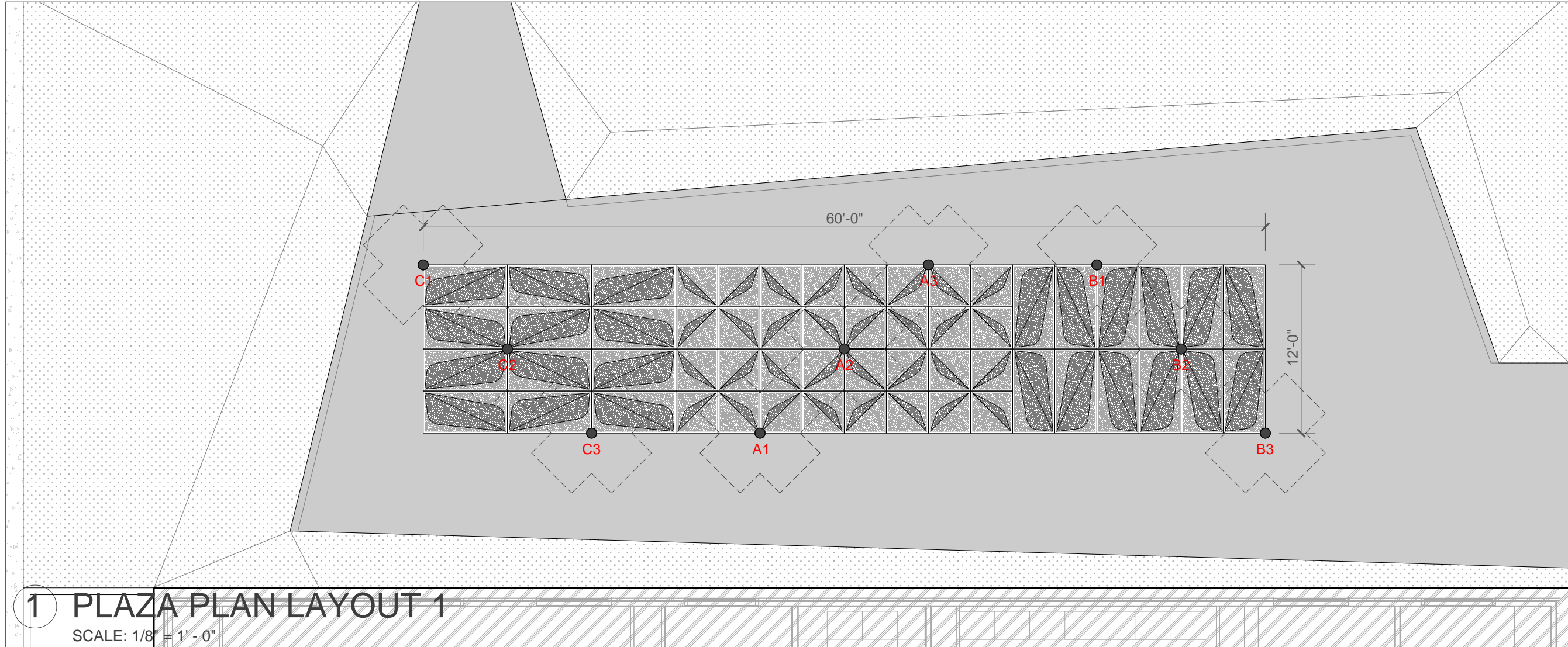
[METALAB]
ARCHITECTURE + DIGITAL FABRICATION
20 N. Sampson
Houston, Texas 77003
713.426.3640
www.metalabstudio.com
info@metalabstudio.com

ISF4

ISERMANN SAN FRANCISCO

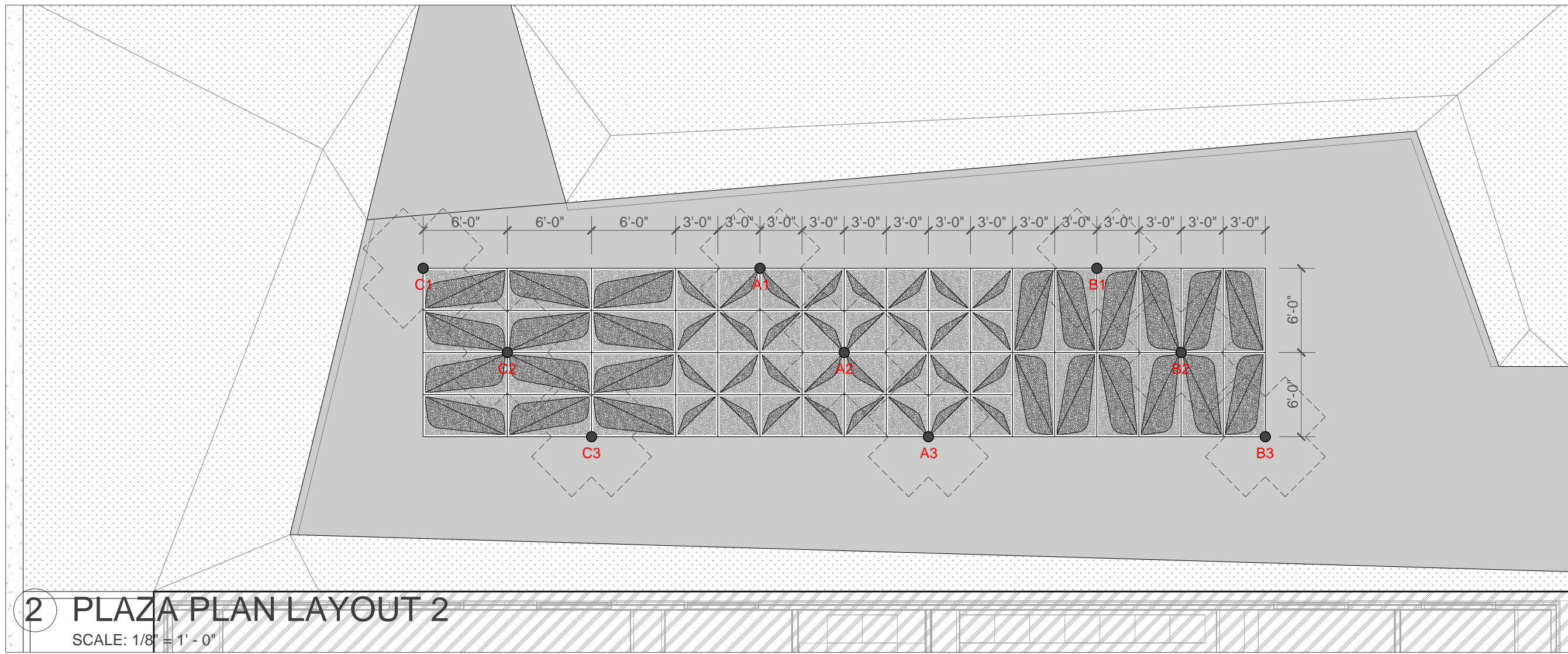
FOR REVIEW

ISF4



1 PLAZA PLAN LAYOUT 1

SCALE: 1/8" = 1' - 0"



2 PLAZA PLAN LAYOUT 2

SCALE: 1/8" = 1' - 0"

NO.	ISSUE	DATE
1	FOR REVIEW	3 January 2018
2	FOR FABRICATION	

ISERMANN SAN FRANCISCO
SAN FRANCISCO CA

[METALAB]
ARCHITECTURE + DIGITAL FABRICATION
www.metalabstudio.com
info@metalabstudio.com

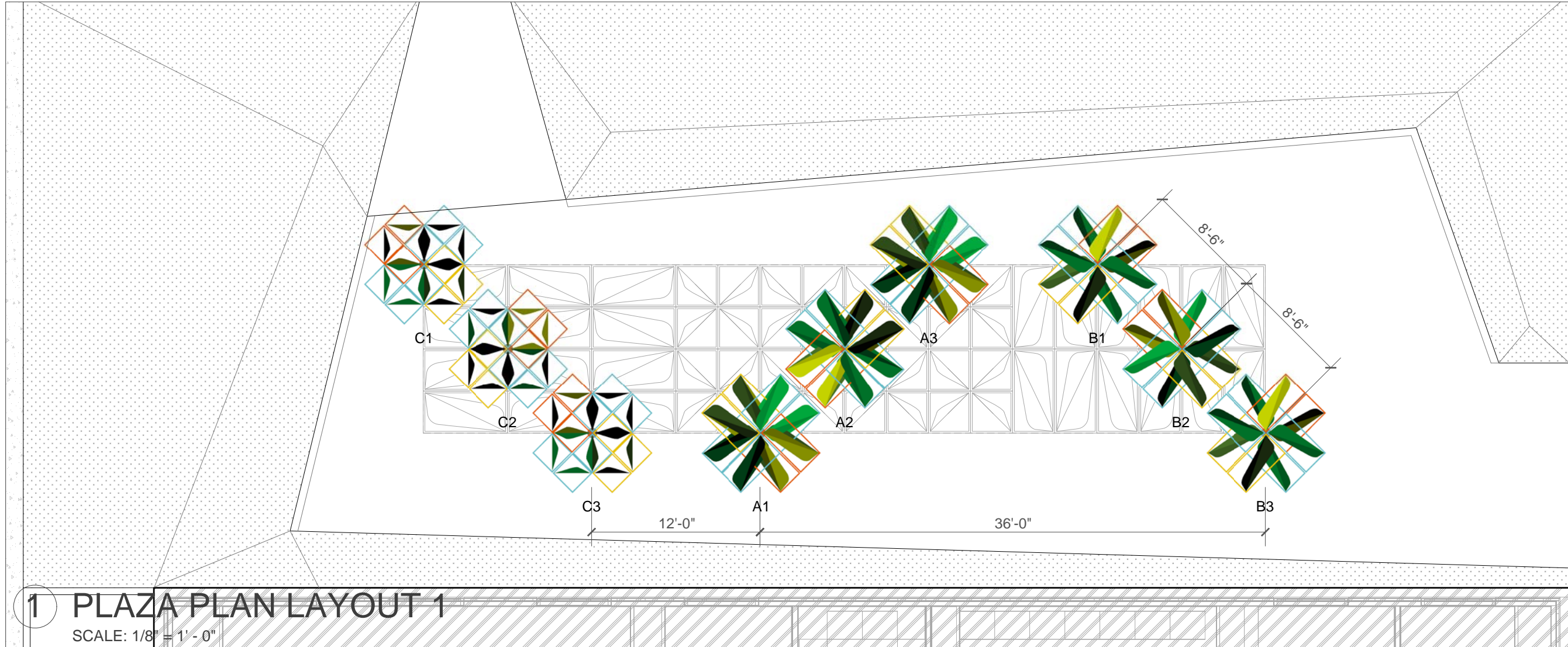
20 N. Sanson
Houston, Texas 77003
713.426.3640

ISF5

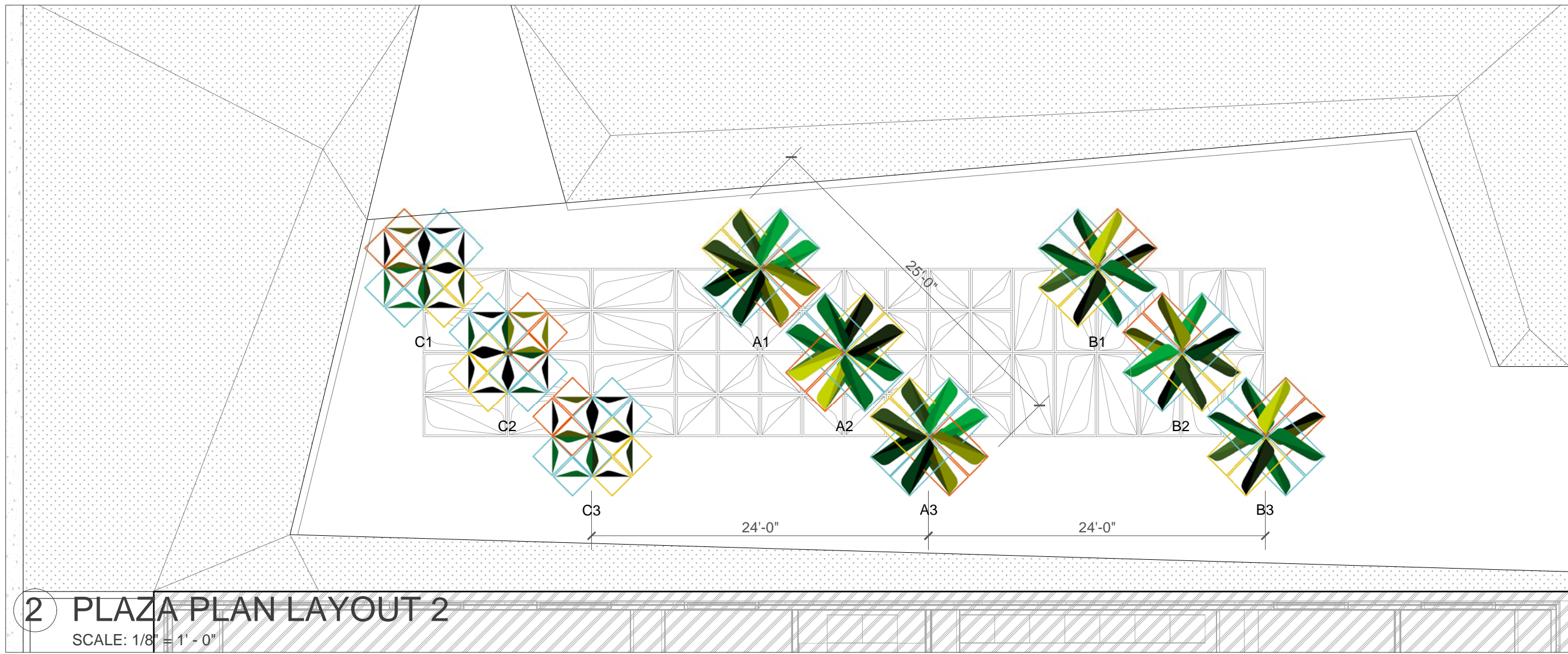
ISERMANN SAN FRANCISCO

FOR REVIEW

ISF5



1 PLAZA PLAN LAYOUT 1
SCALE: 1/8" = 1' - 0"



2 PLAZA PLAN LAYOUT 2
SCALE: 1/8" = 1' - 0"

NO.	ISSUE	DATE
1	FOR REVIEW	3 January 2018
2	FOR FABRICATION	

ISERMANN SAN FRANCISCO
SAN FRANCISCO CA

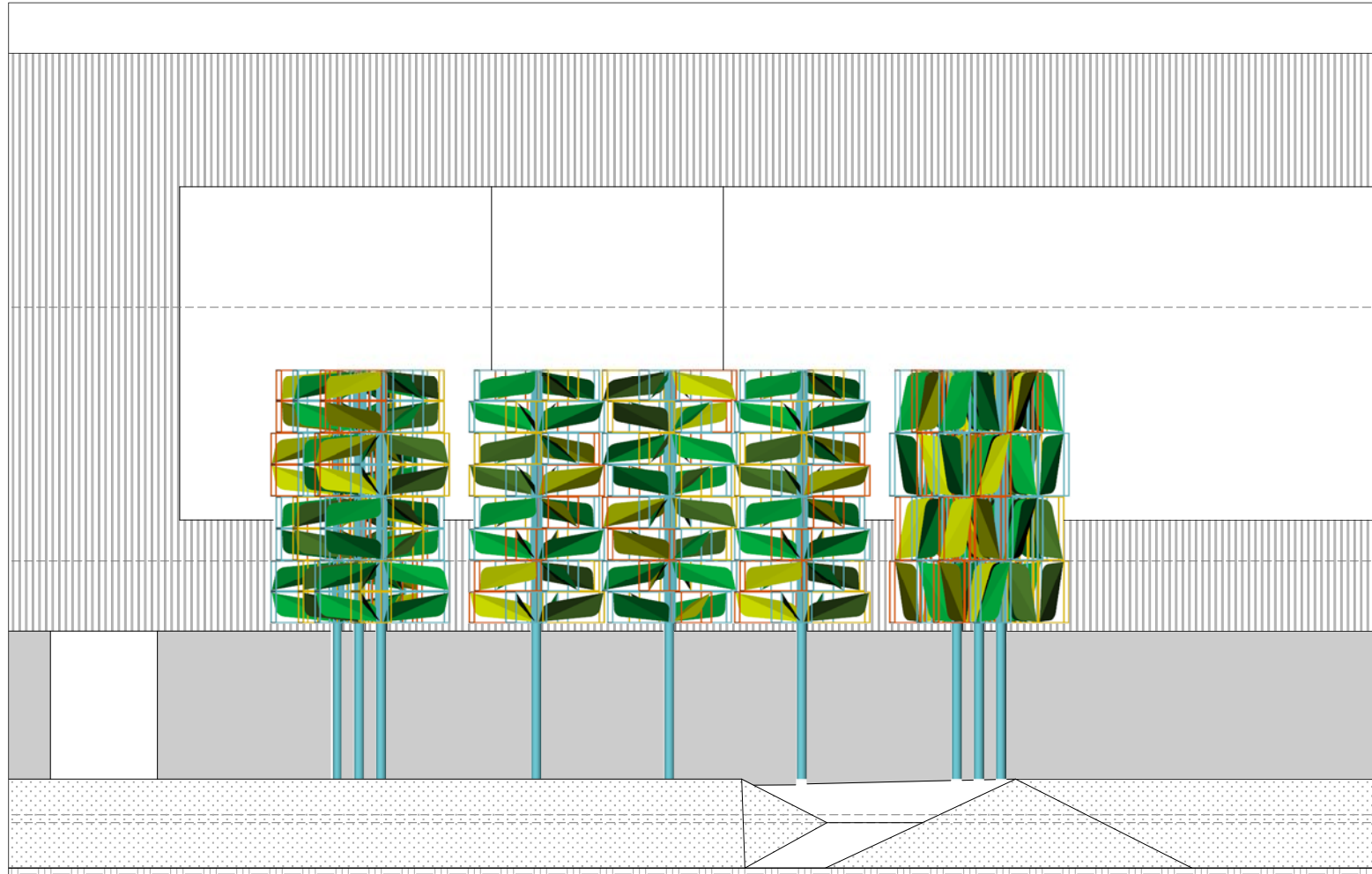
[METALAB]
ARCHITECTURE + DIGITAL FABRICATION
www.metalabstudio.com
713.426.3640
info@metalabstudio.com

ISF5.1

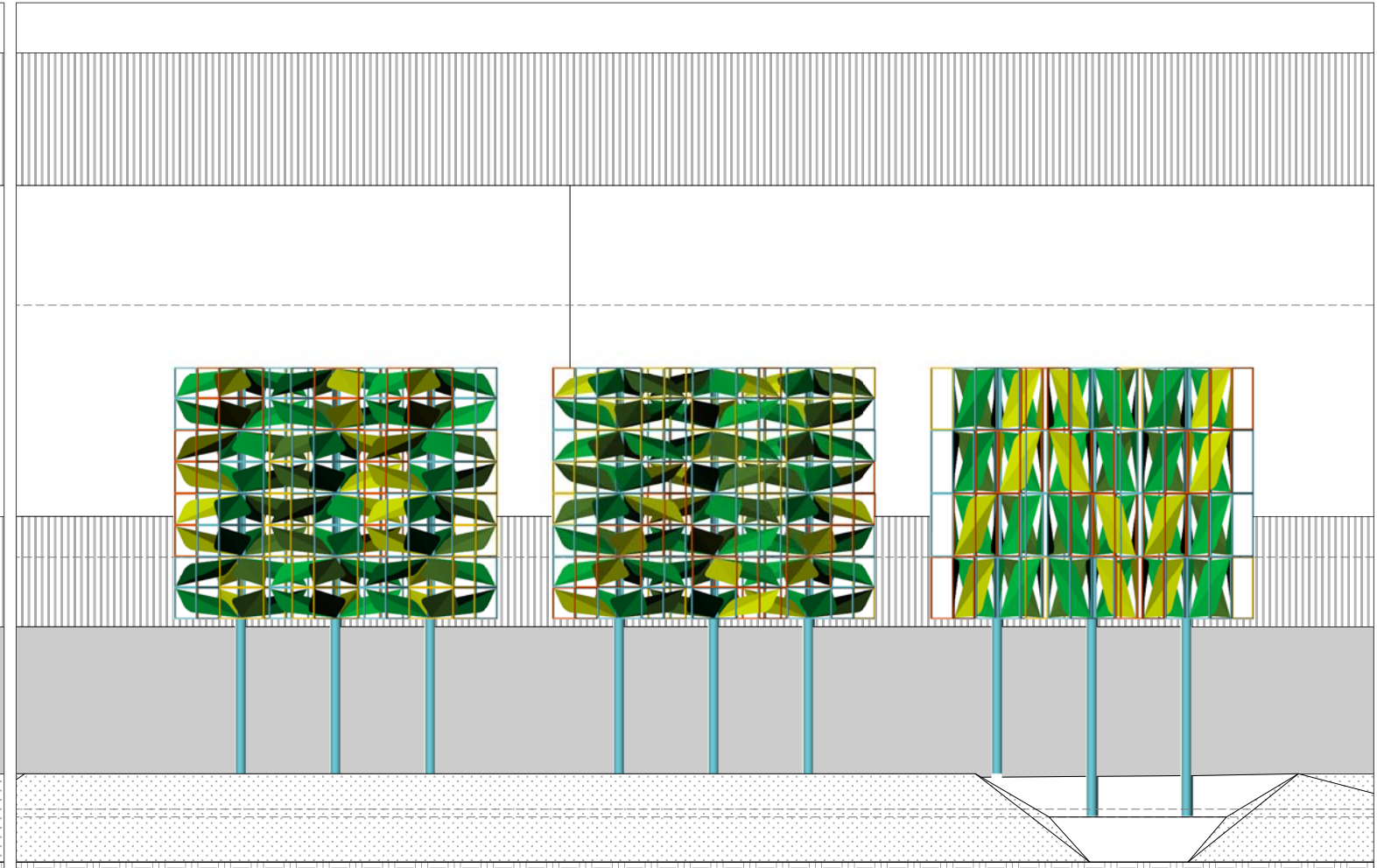
ISERMANN SAN FRANCISCO

FOR REVIEW

ISF5.1



1 NORTH ELEVATION OPTION 1
SCALE: 3/32" = 1' - 0"



2 NORTH EAST ELEVATION OPTION 1
SCALE: 3/32" = 1' - 0"



3 EAST ELEVATION OPTION 1
SCALE: 3/32" = 1' - 0"

NO.	ISSUE	DATE
1	FOR REVIEW	3 January 2018
2	FOR FABRICATION	

ISERMANN SAN FRANCISCO
SAN FRANCISCO CA

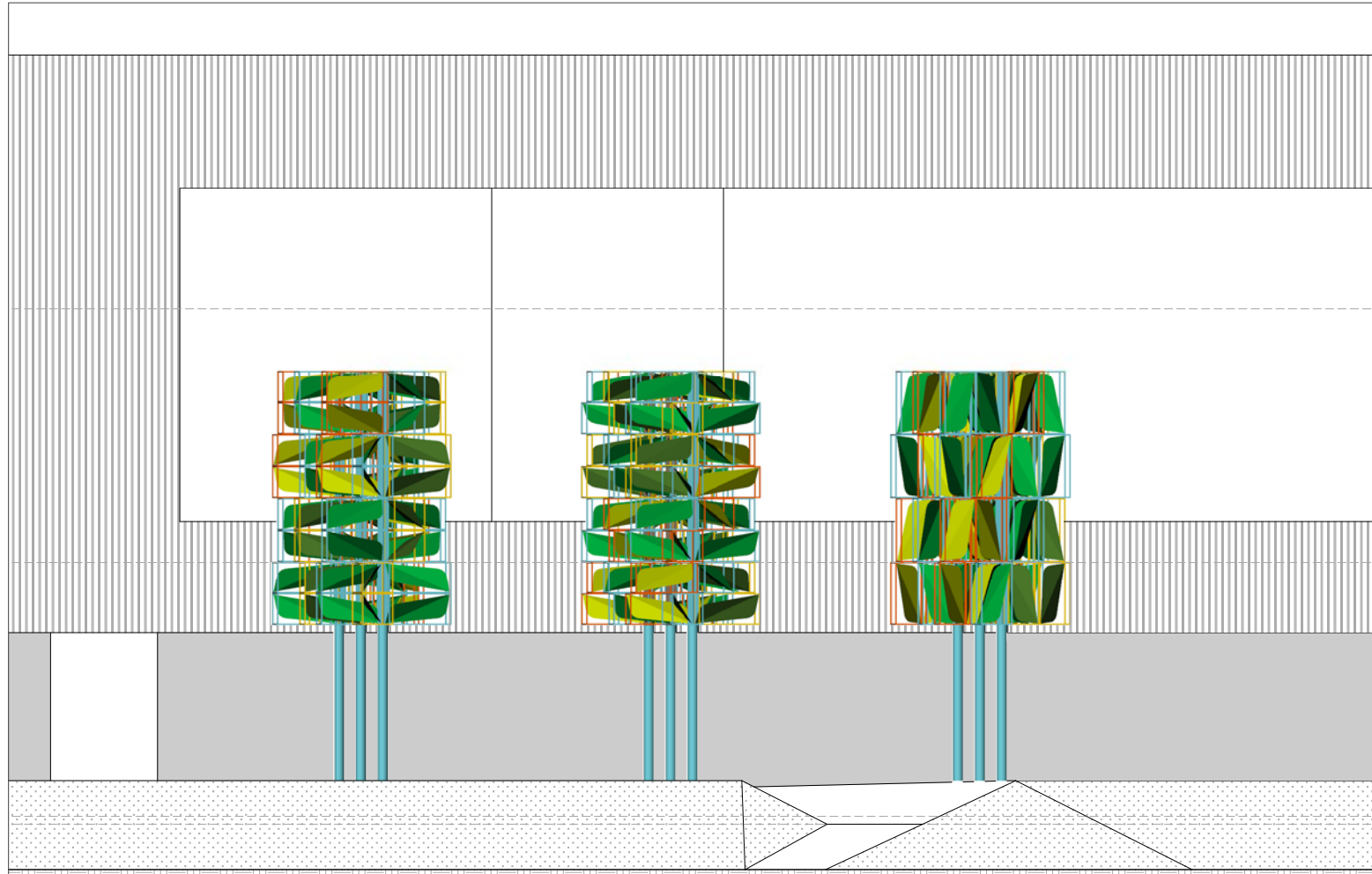
[METALAB]
ARCHITECTURE + DIGITAL FABRICATION
www.metalabstudio.com
20 N. Sampson
Houston, Texas 77003
713.426.3640
info@metalabstudio.com

ISF6

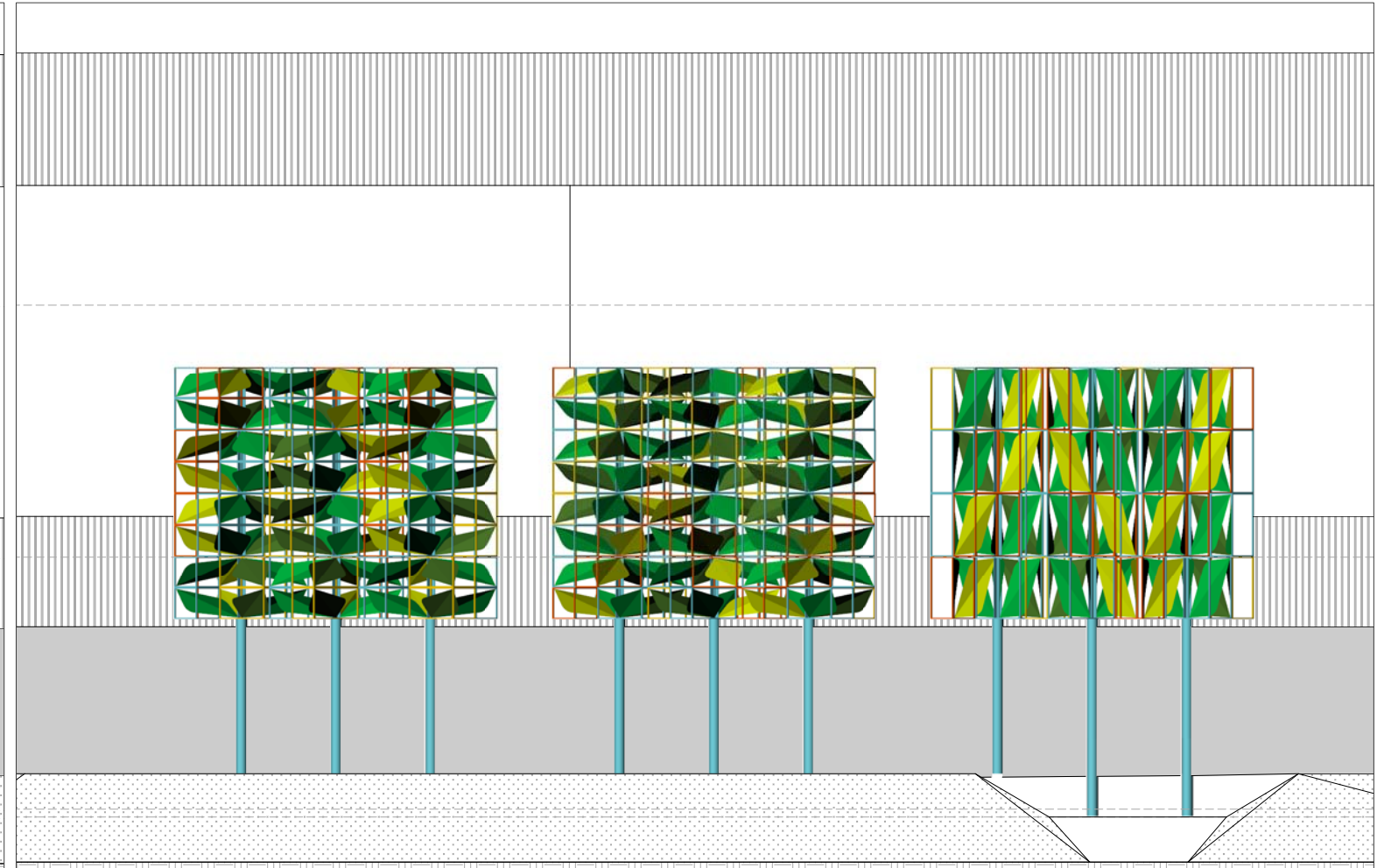
ISERMANN SAN FRANCISCO

FOR REVIEW

ISF6



1 NORTH ELEVATION OPTION 2
SCALE: 3/32" = 1' - 0"



2 NORTH EAST ELEVATION OPTION 2
SCALE: 3/32" = 1' - 0"



3 EAST ELEVATION OPTION 2
SCALE: 3/32" = 1' - 0"

NO.	ISSUE	DATE
1	FOR REVIEW	3 January 2018
2	FOR FABRICATION	

ISERMANN SAN FRANCISCO
SAN FRANCISCO CA

[METALAB]
ARCHITECTURE + DIGITAL FABRICATION
www.metalabstudio.com
20 N. Sampson
Houston, Texas 77003
713.426.3640
info@metalabstudio.com

ISF7

ISERMANN SAN FRANCISCO

FOR REVIEW

ISF7