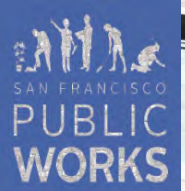


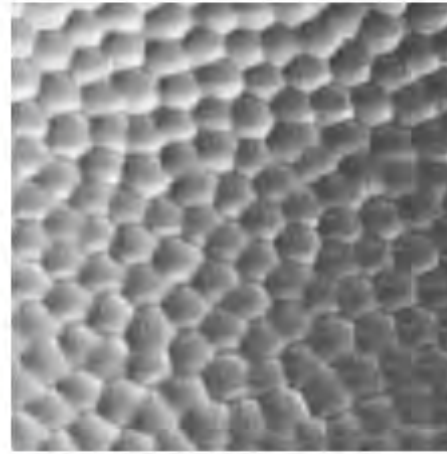
# SAN FRANCISCO'S Amenities – Civic Design Review Phase 3



**SMITHGROUP**

**JCDecaux**





Textured  
Stainless Steel



Perforated  
Stainless Steel  
(base of door)



Durable  
Concrete base

## Design Approach

### **Simplicity in its Kit of Parts**

The furnishings are designed as a kit of parts for ease in buildability and maintenance. The toilet's unique sculptural shape displays a sense of complexity, yet, the kit of parts assembly is simple having been composed of repeated and rotated panels. The exterior shell consists of a durable concrete base and formed texture stainless steel panels for the walls and door. A fiberglass roof includes a skylight for daylight illumination inside.

### **Maintainability**

State of the Art engineering to deliver ruggedized furniture for everyday useage. They are designed to keep the challenges of structures in an urban context. This includes climate, graffiti, and pedestrian activity.

### **Safety**

Illumination of the toilet using LED lighting for enhanced perception of safety and ease of use. Lighting is located around door frame and in seam between concrete base and SS panels

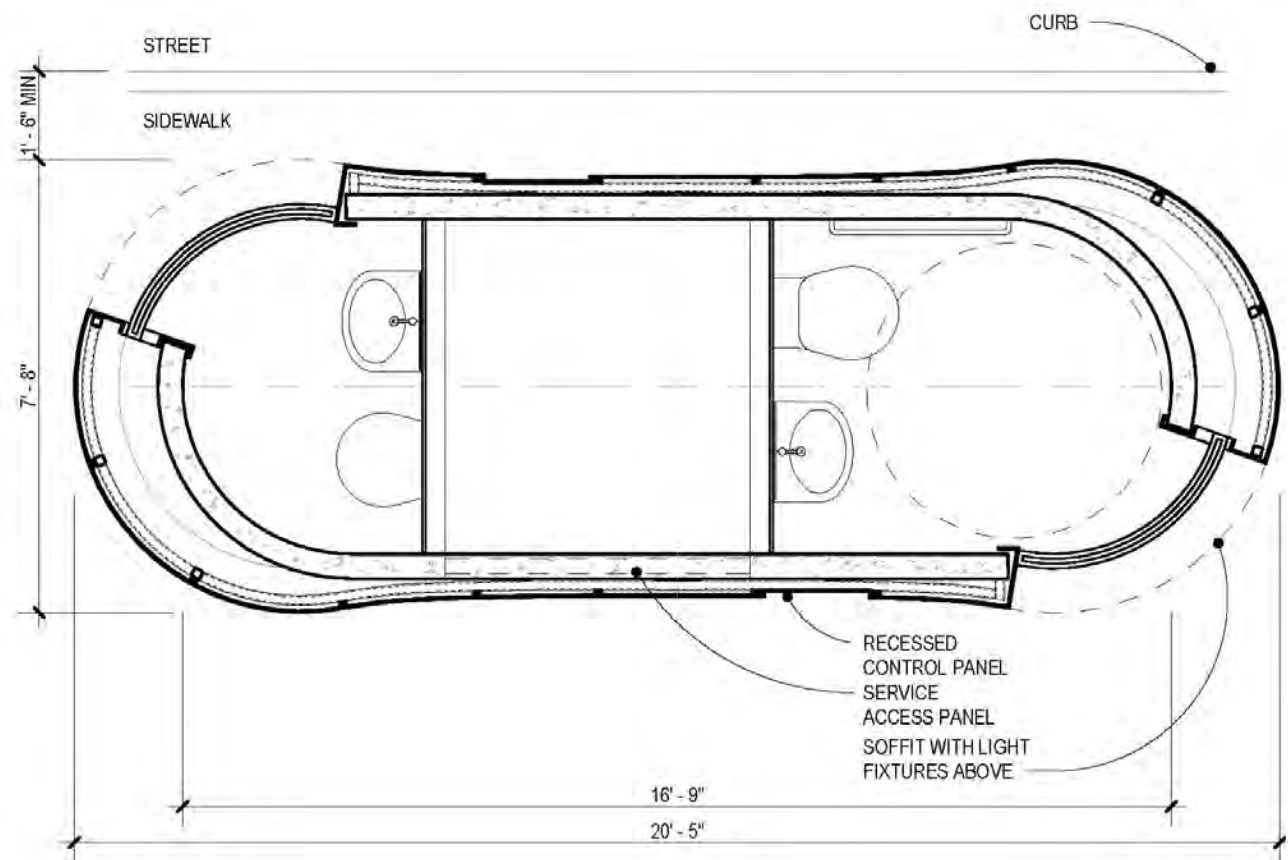




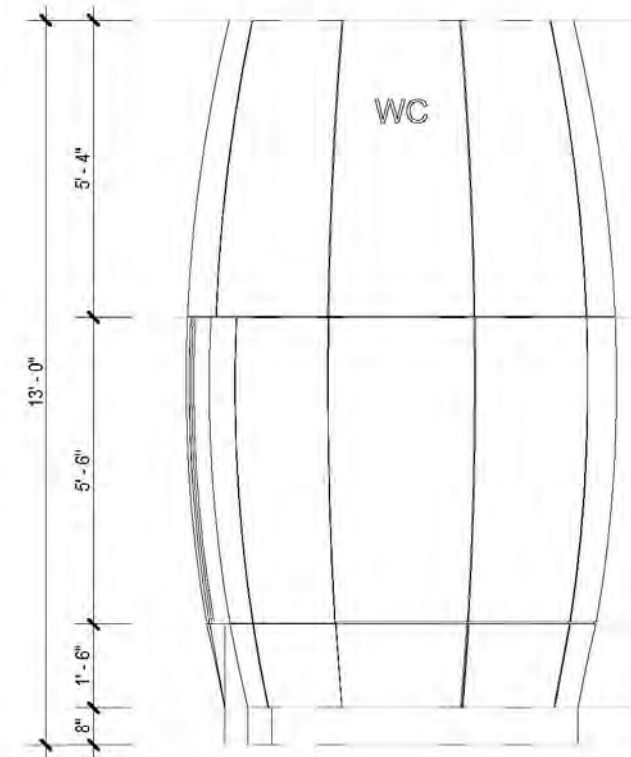
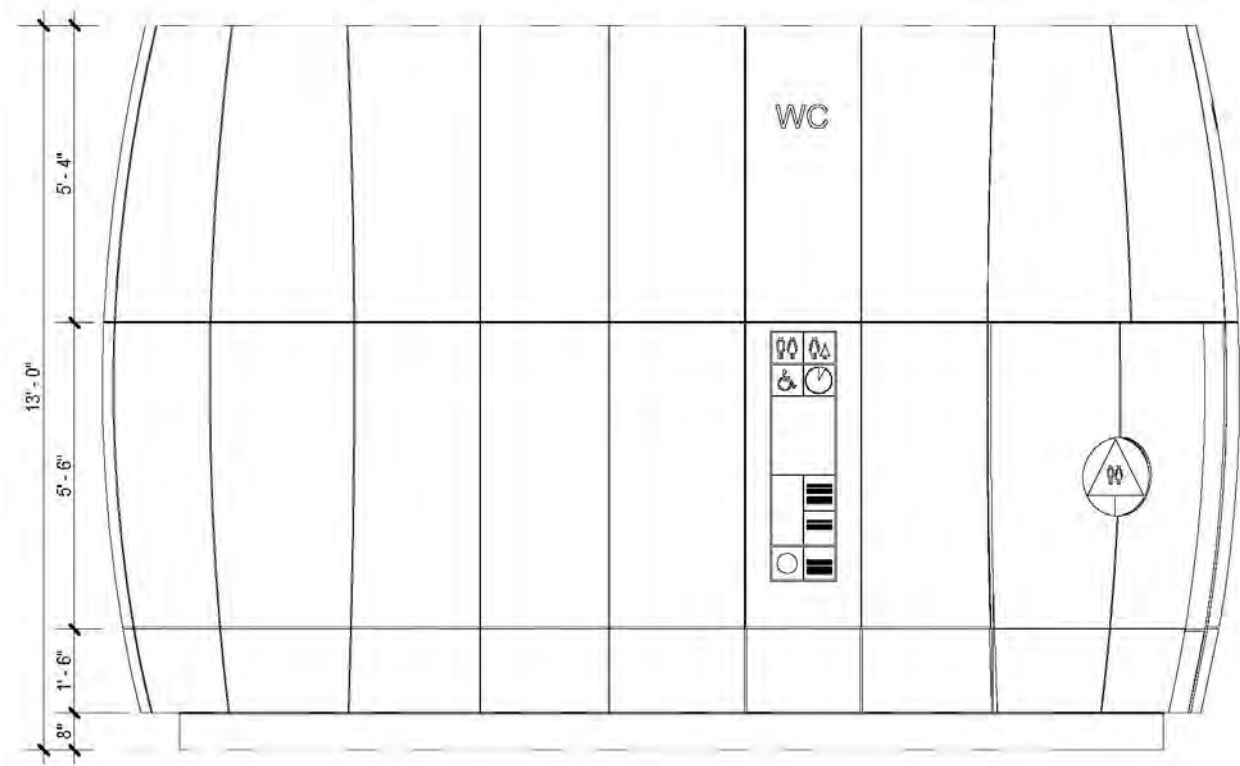
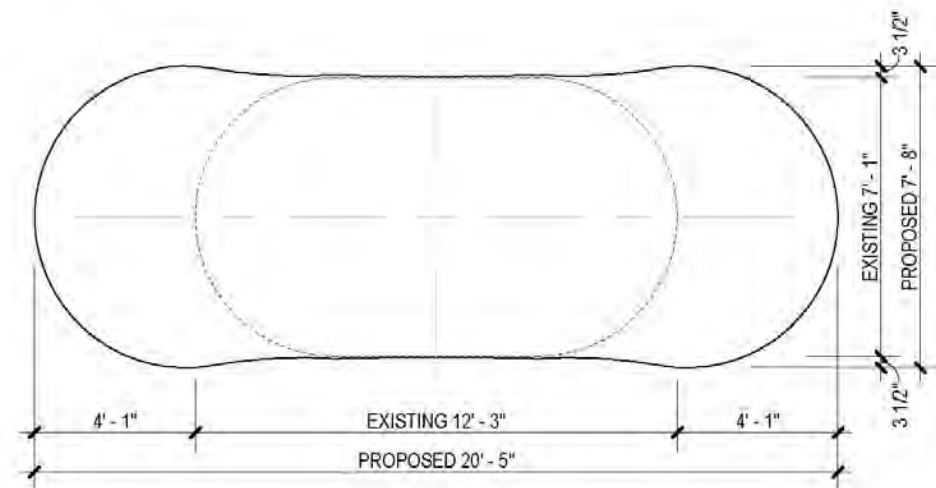
Previous design



Revised design



FOOTPRINT OVERLAY EXISTING & PROPOSED - DOUBLE TOILET





Small 3-sided panel kiosk



Market St. 3-sided panel kiosk



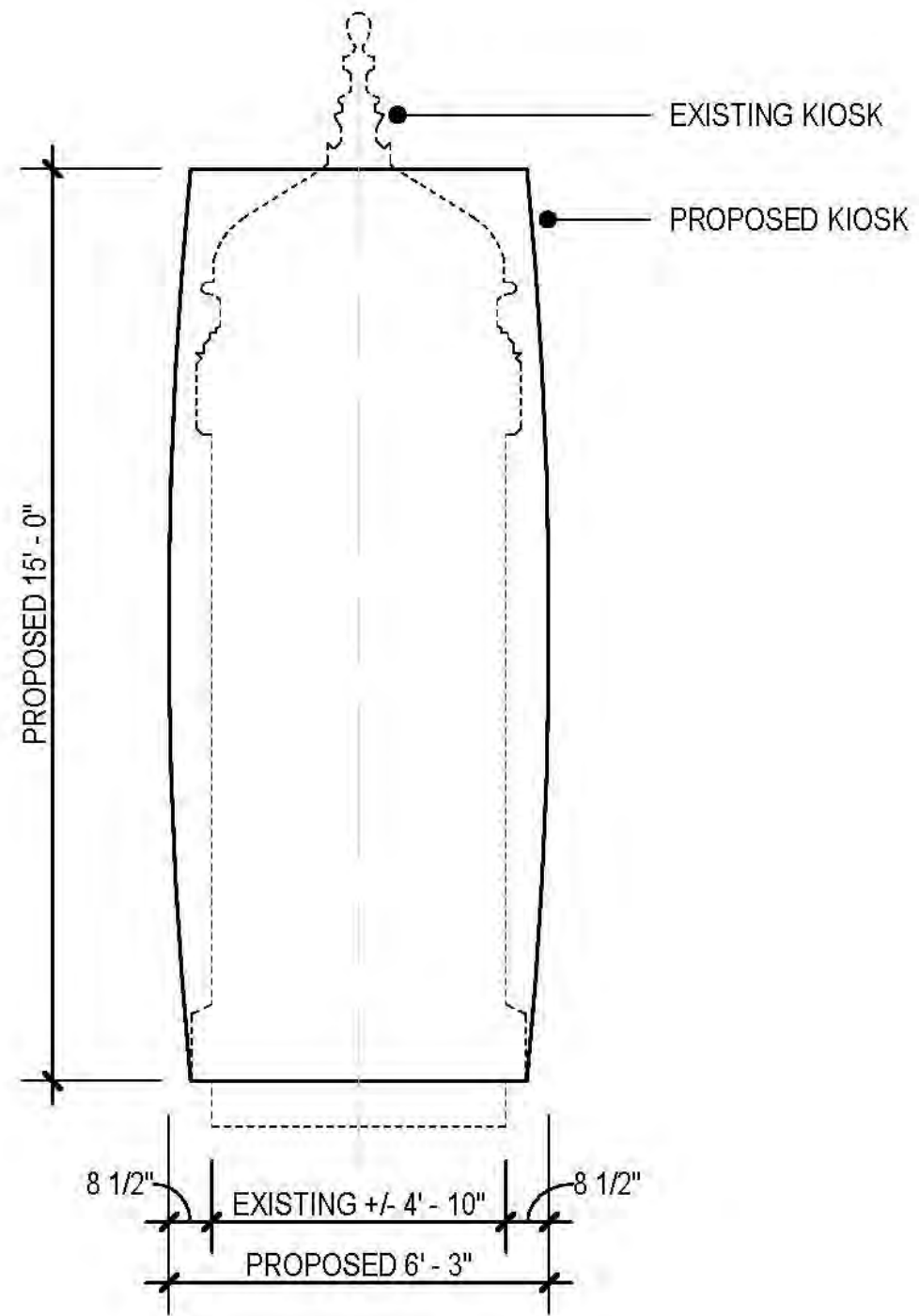
Interactive kiosk



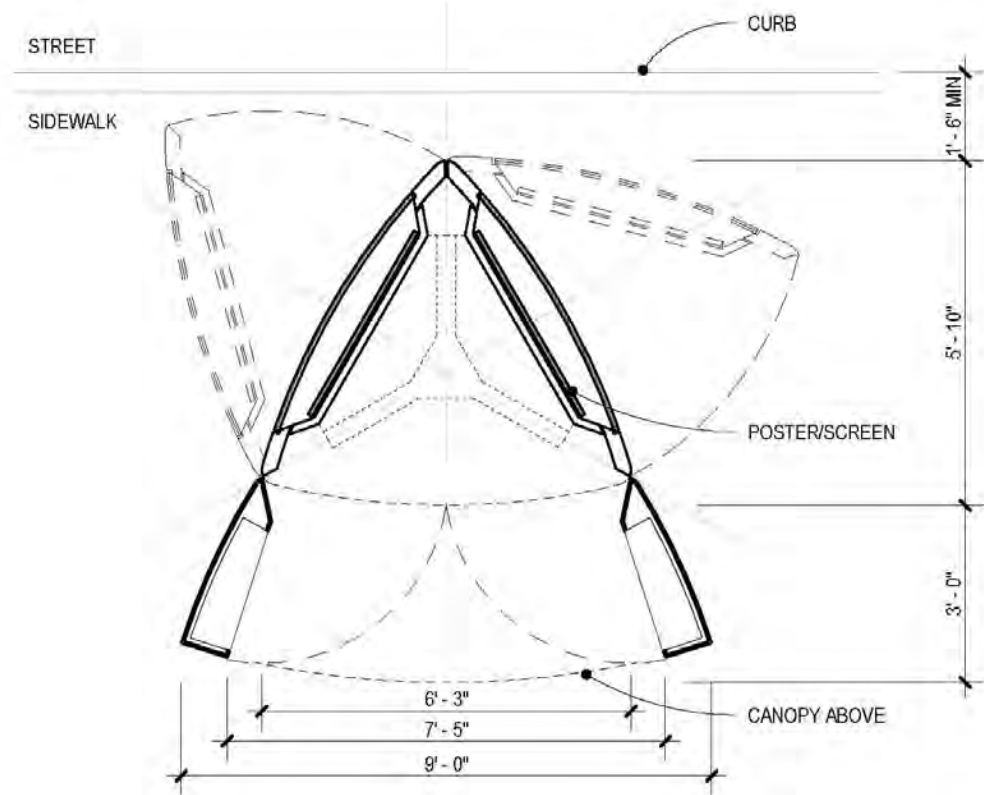
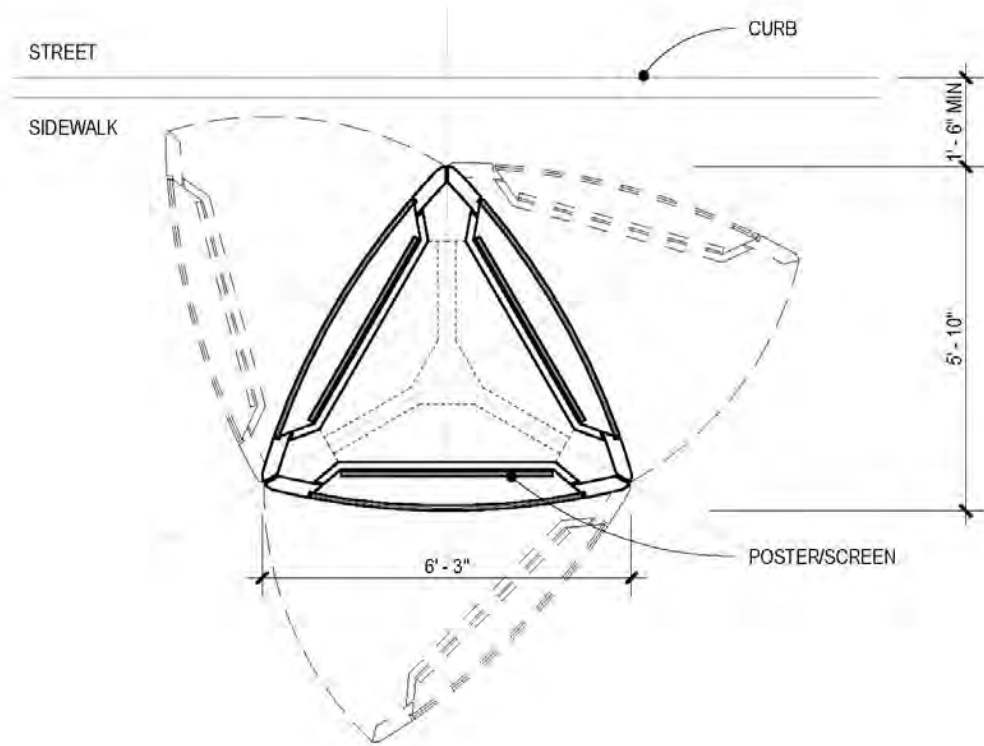
Multi-function / Retail kiosk



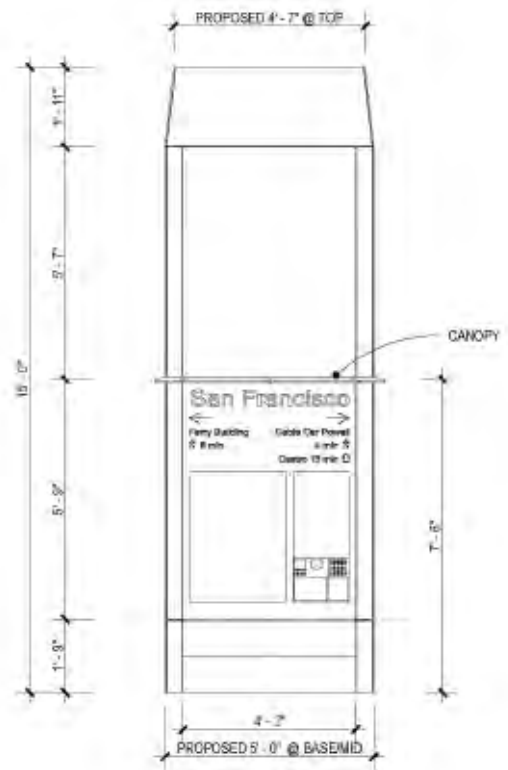
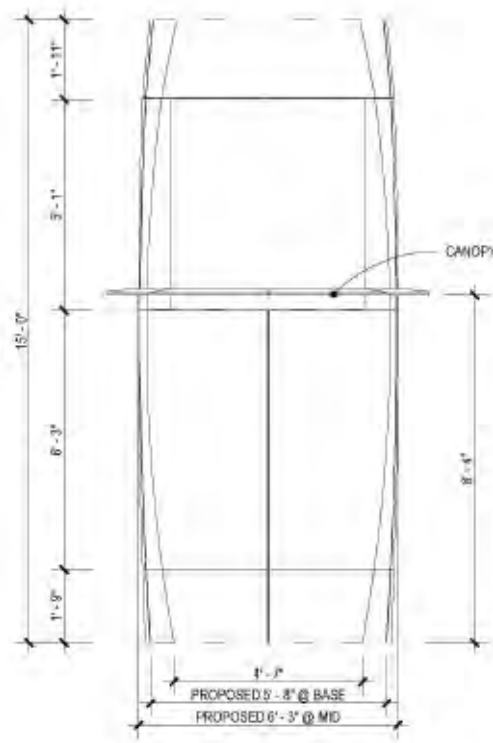
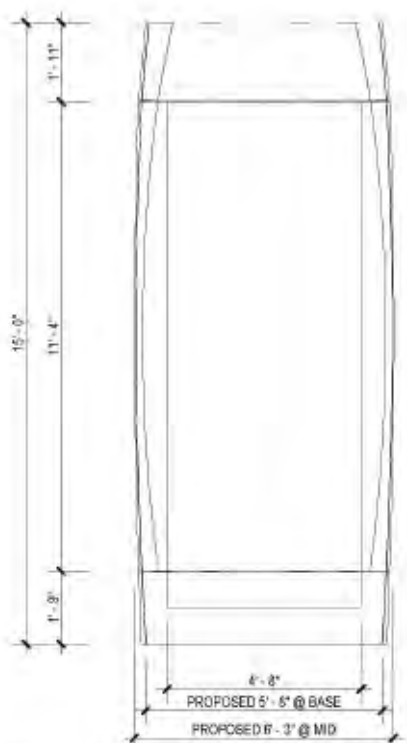
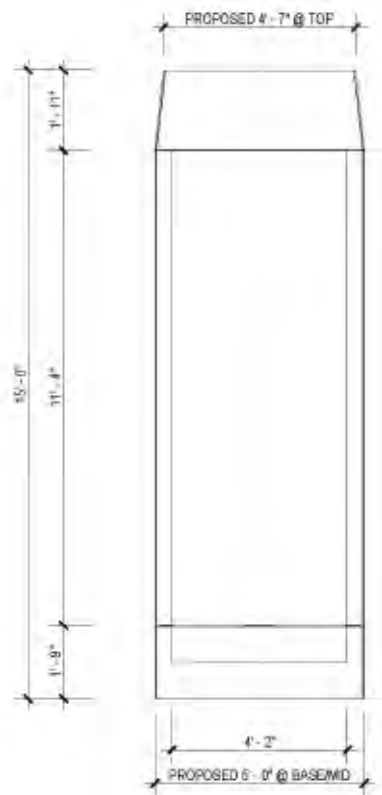
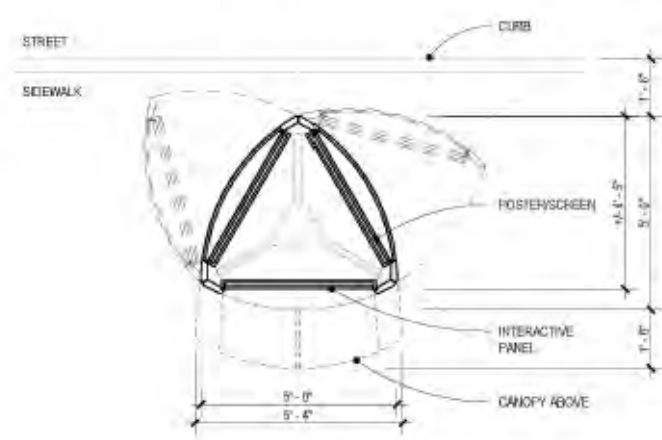
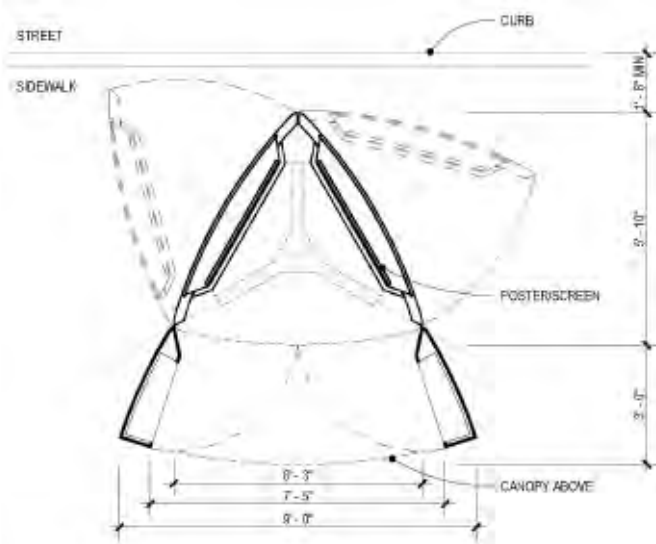
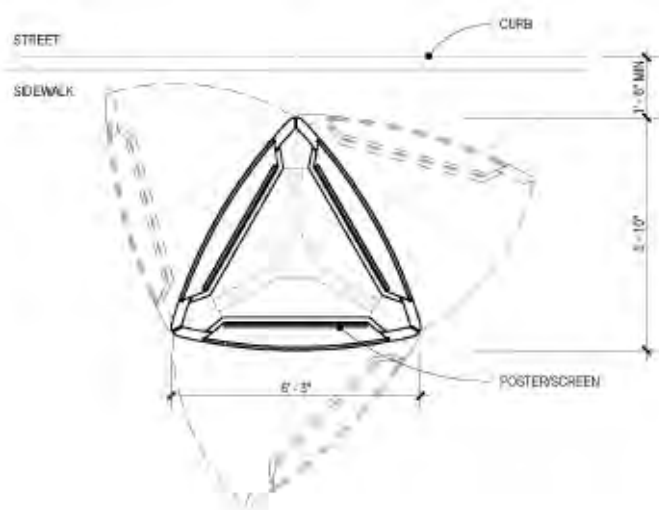
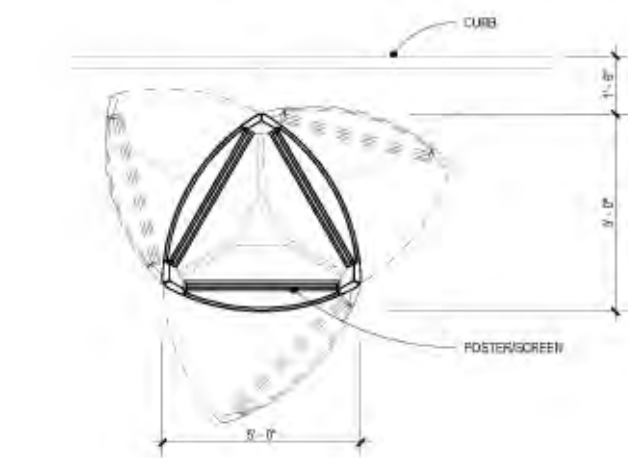
Existing Market St. kiosk



The proposed designs need to be fully developed and engineered over the next few months to confirm that all codes are met and for structural and constructability requirements







**Small**

**Market Street**

**Multi-Function / Retail Kiosk**

**Interactive / Info Kiosk**

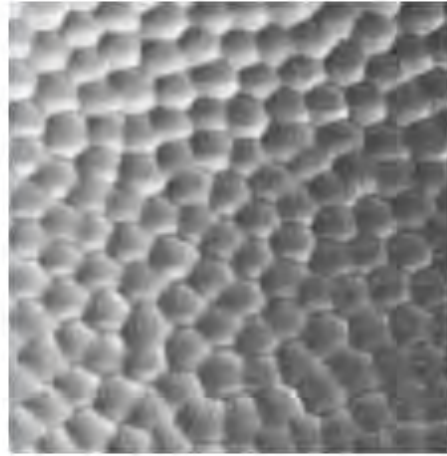
**3 Sided Panel Kiosk**

The City panel is a full length poster space for a public service announcement including the Market Street Art Commission poster program.

The service side is a vending area. The service side is divided in 2 sections. Lower section has 2 French doors that swing open underneath an awning. The upper section above the awning is a space reserved for a public service announcements poster or digital clock.

The service side has 2 sections. The lower section underneath a small awning has information/ map and an interactive digital screen. The upper section above the awning is reserved for a public service announcement poster.

The proposed designs need to be fully developed and engineered over the next few months to confirm that all codes are met and for structural and constructability requirements



Textured  
Stainless  
Steel and  
matching  
fiberglass cap



Perforated  
Stainless  
Steel (at  
ventilated  
base)



Glazing

## Design Approach

### **Simplicity in its Kit of Parts**

The furnishings are designed as a kit of parts for ease in buildability and maintenance. The kiosk's unique sculptural shape displays a sense of complexity, yet, the kit of parts assembly is simple. The exterior shell consists of glazed poster/display space and formed texture Stainless Steel panels for the walls and door. Cap is made of matching fiberglass hiding antennas behind.

### **Maintainability**

State of the Art engineering to deliver ruggedized furniture for everyday useage. They are designed to keep the challenges of structures in an urban context. This includes climate, graffiti, and pedestrian activity.



POWELL

POWELL

POWELL & MASON Sts.

KIOSK MUSEUM

SPECTACULAR VIEWS!

OF PIER 39

MUNICIPAL

SPECTACULAR VIEWS!

OF PIER 39

MUNICIPAL RAILWAY

LOUISIANA



Previous design



POWELL

POWELL

San Francisco

← Ferry Building 8 min →  
Cable Car Powell 4 min  
Castro 15 min

UNION SQUARE

Revised design

# SAN FRANCISCO'S Amenities



**SMITHGROUP**

**JCDecaux**

