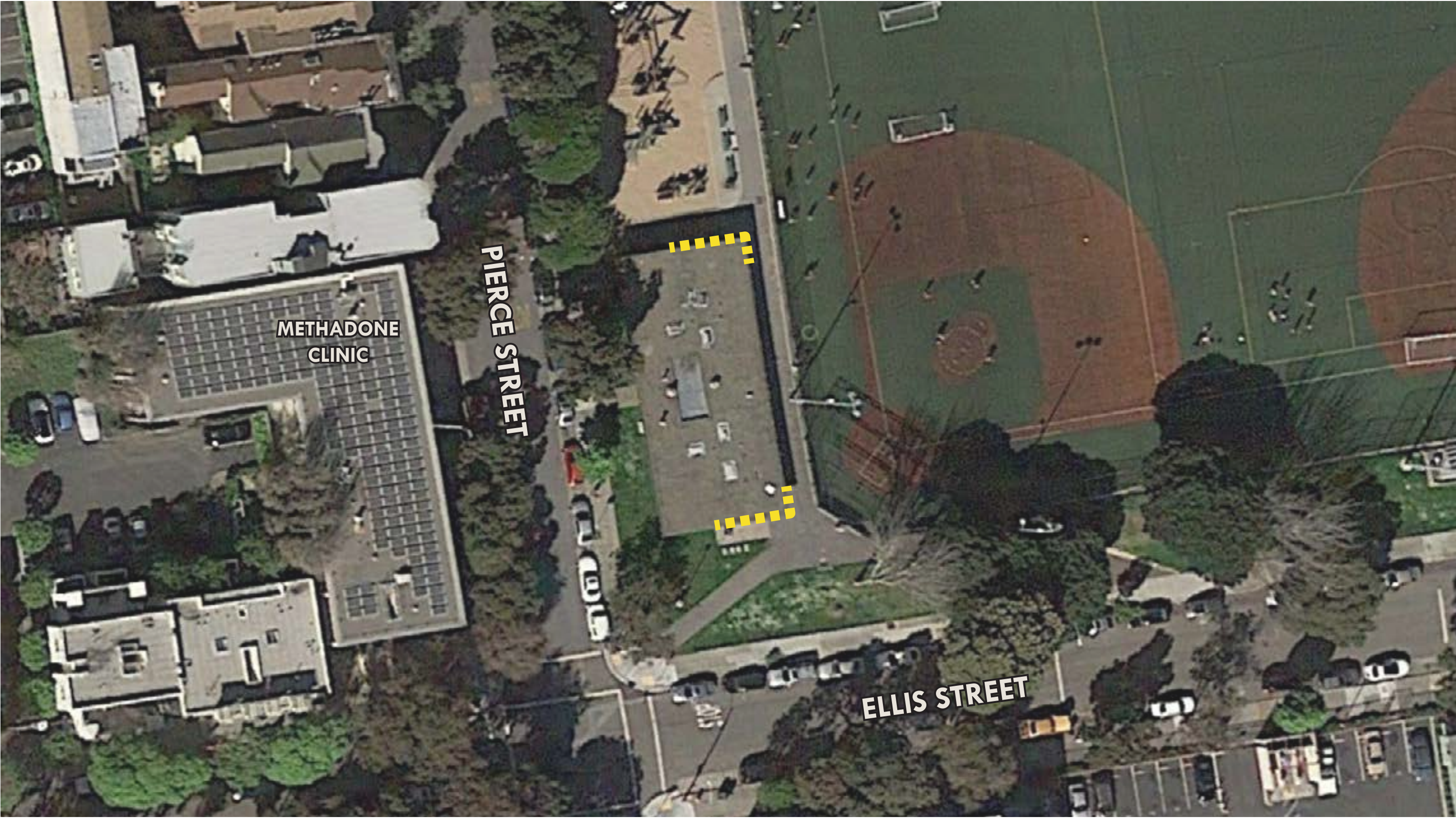


RECREATION AND PARKS | KIMBELL CLUBHOUSE GATES

CIVIC DESIGN REVIEW PHASE I/II/III
PRESENTATION PACKAGE FOR APRIL 20TH, 2015



SITE AND CONTEXT



EXISTING CONDITIONS



The community response to the clubhouse renovation has been favorable but they have requested gates for the following reasons:

- Overhang space has provided unintended shelter for vagrants
- Safety concerns due to the proximity of the methadone clinic across the street
- Additional security for community spaces within the building

OPERABLE PORTIONS



OPEN (DURING DAY)



CLOSED (AT NIGHT)



SECURED PORTION - DOES NOT MOVE



MOVABLE PORTION - SLIDES ON TRACK TO OPEN DURING THE DAY AND LOCK AT NIGHT

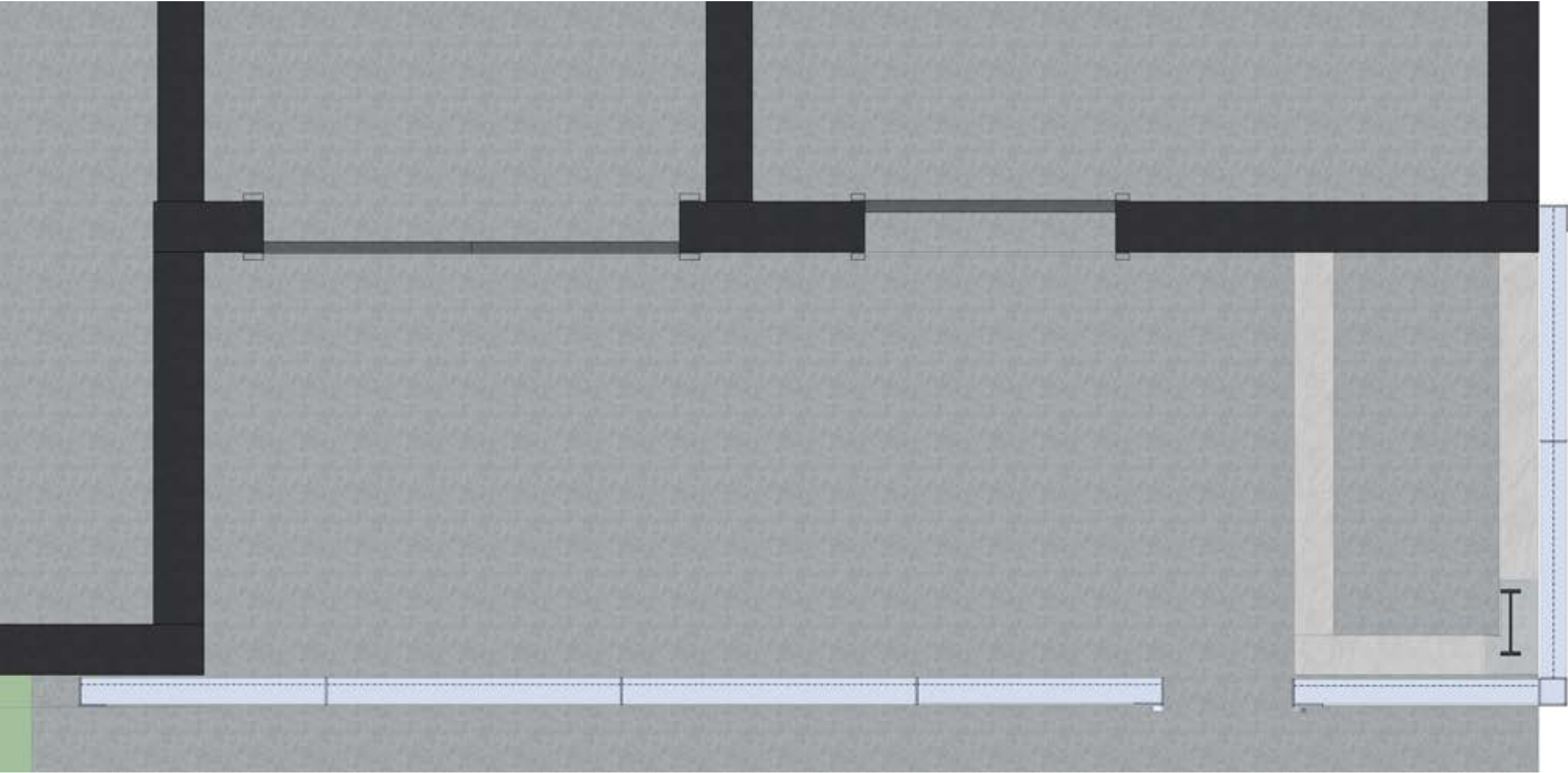
ELEVATIONS



SOUTH GATE ELEVATION OPEN



SOUTH GATE ELEVATION CLOSED



PERSPECTIVE (CLOSED)



