



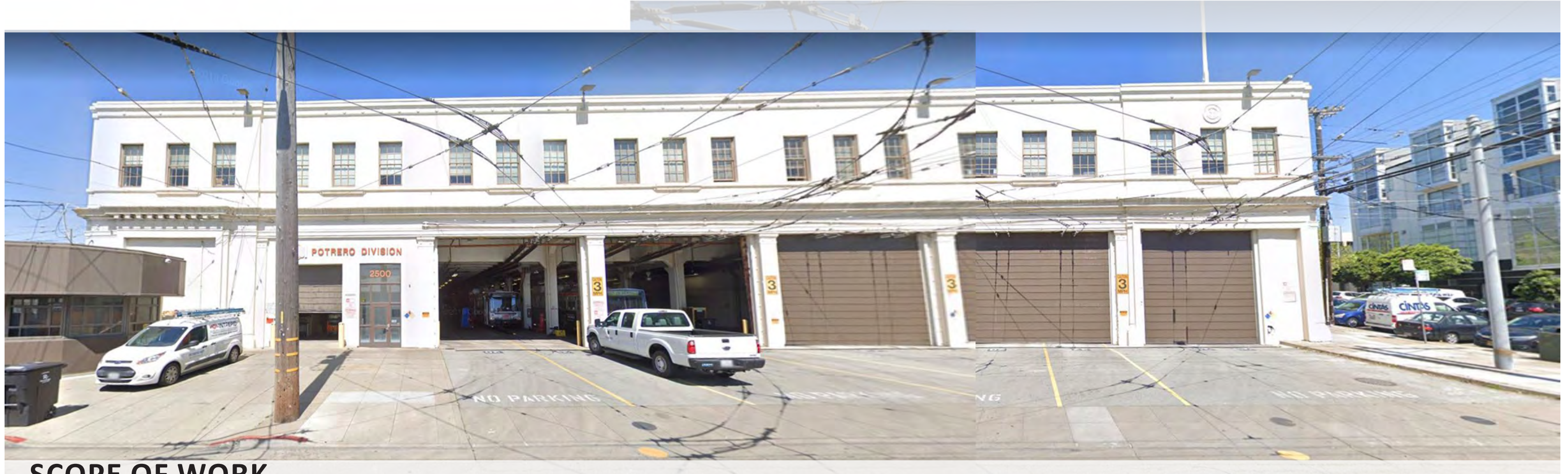
SFMTA
MUNI METRO EAST TEMPORARY BUS FACILITY
CDR | PHASE I | 06.15.2020



PROJECT BACKGROUND AND OBJECTIVE

The Muni Metro East Temporary Facility project is a result of a long term SFMTA facility remodelling/redesigning of existing facilities such as the Potrero Division.

In order for these necessary facilities to undergo re-designing to accomodate maintenance demands, MTA needs temporary spaces to take on maintenance and parking capabilities while existing facilities undergo construction.



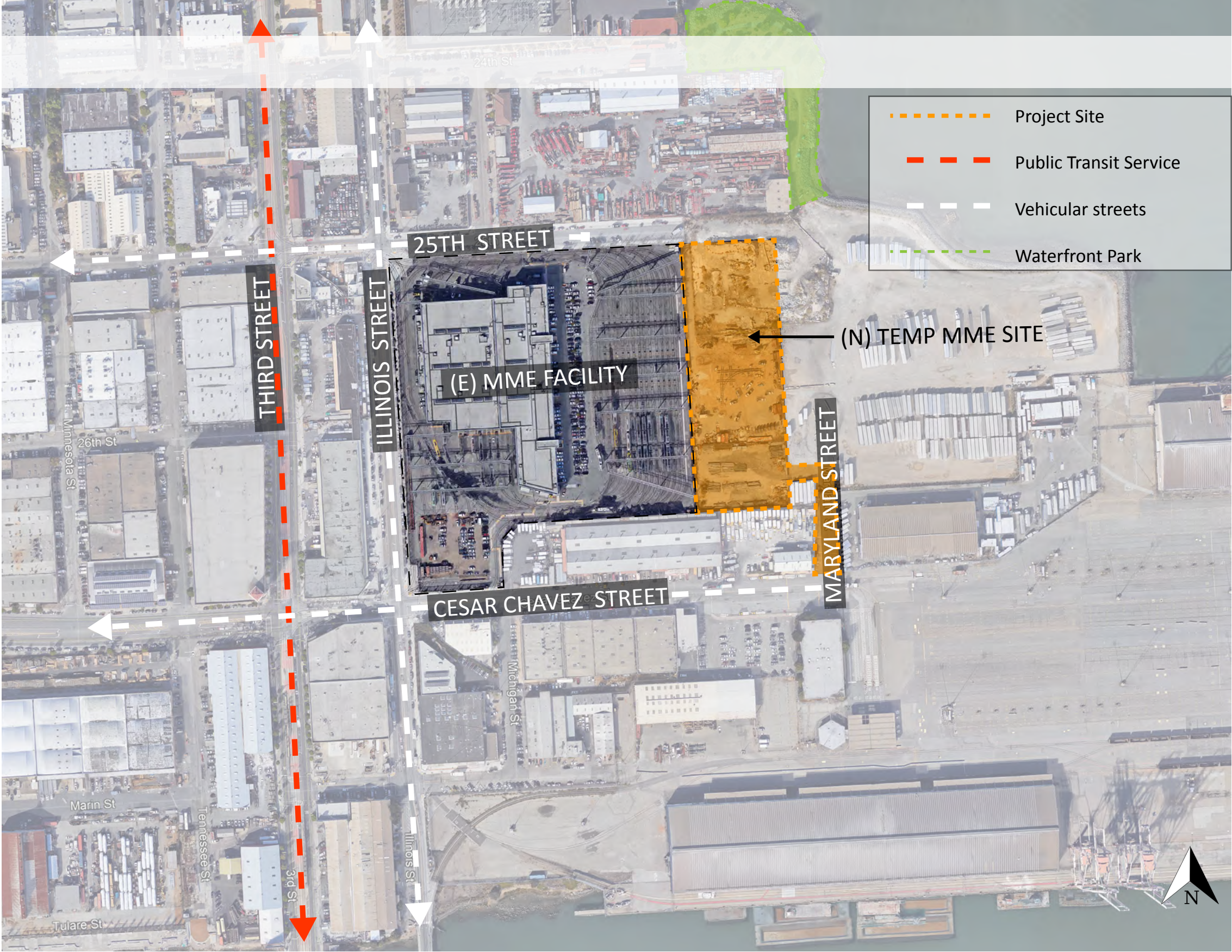
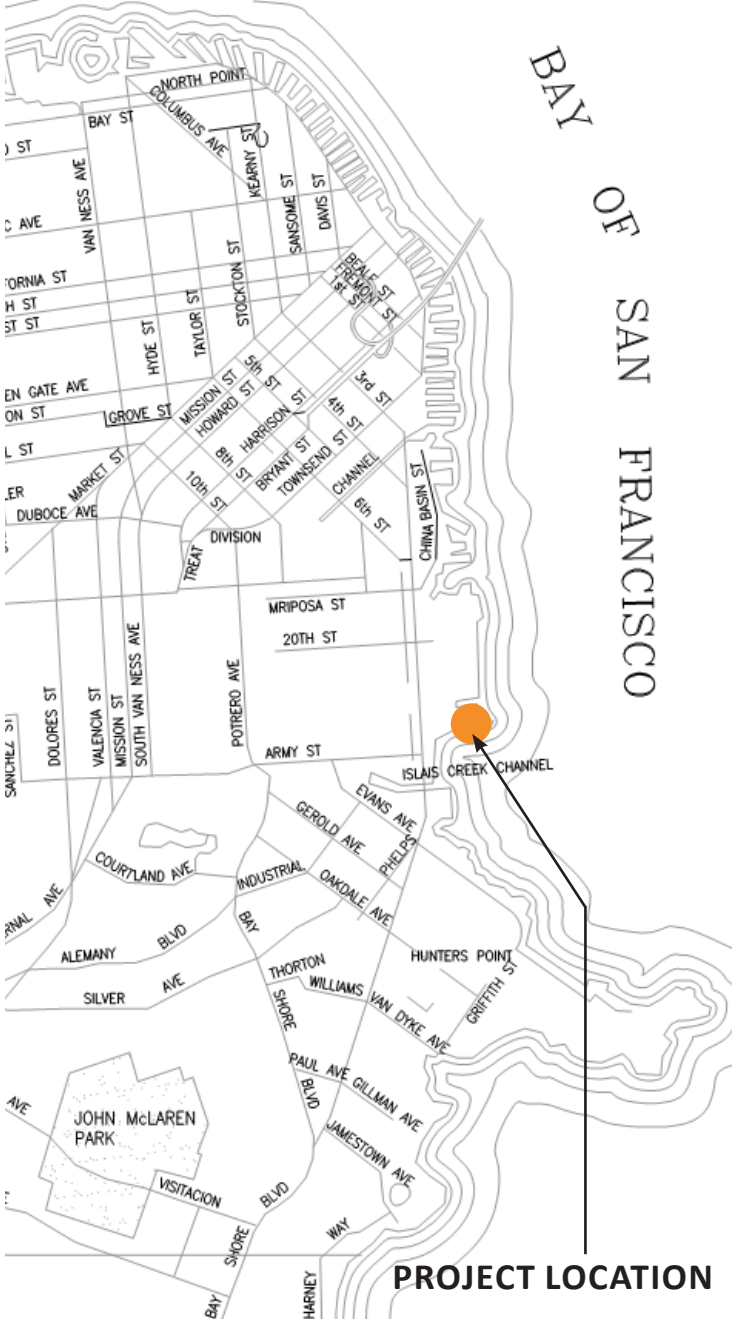
SCOPE OF WORK

- Construction of an open air parking lot with trolley charging capabilities.
- Construction of temporary bus wash , fare collection, and storage.
- Such space will need to accomodate temporary employee facilities such as restrooms, lockers, showers, breakrooms, and offices.

SITE COMPARISONS



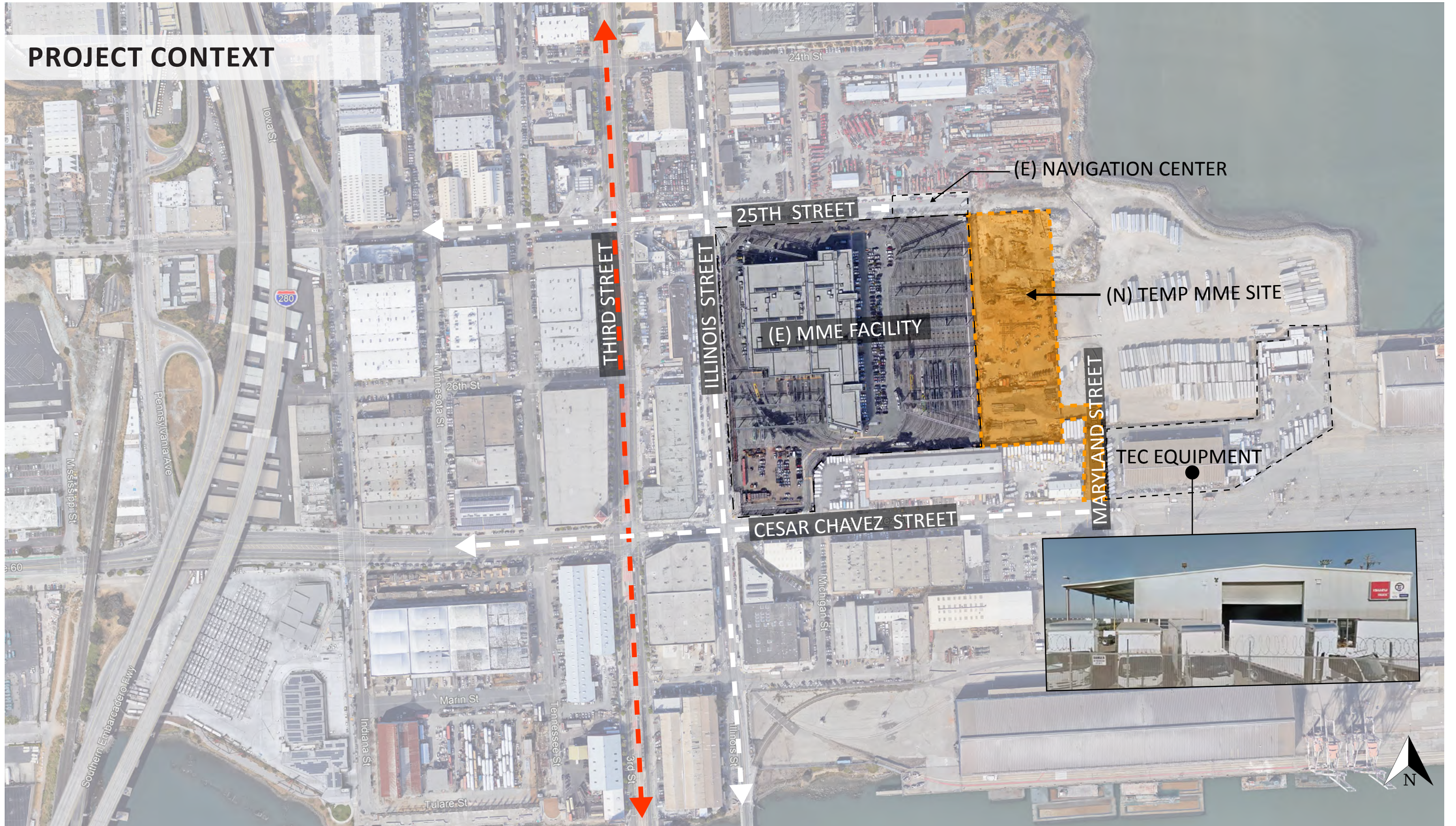
PROJECT LOCATION



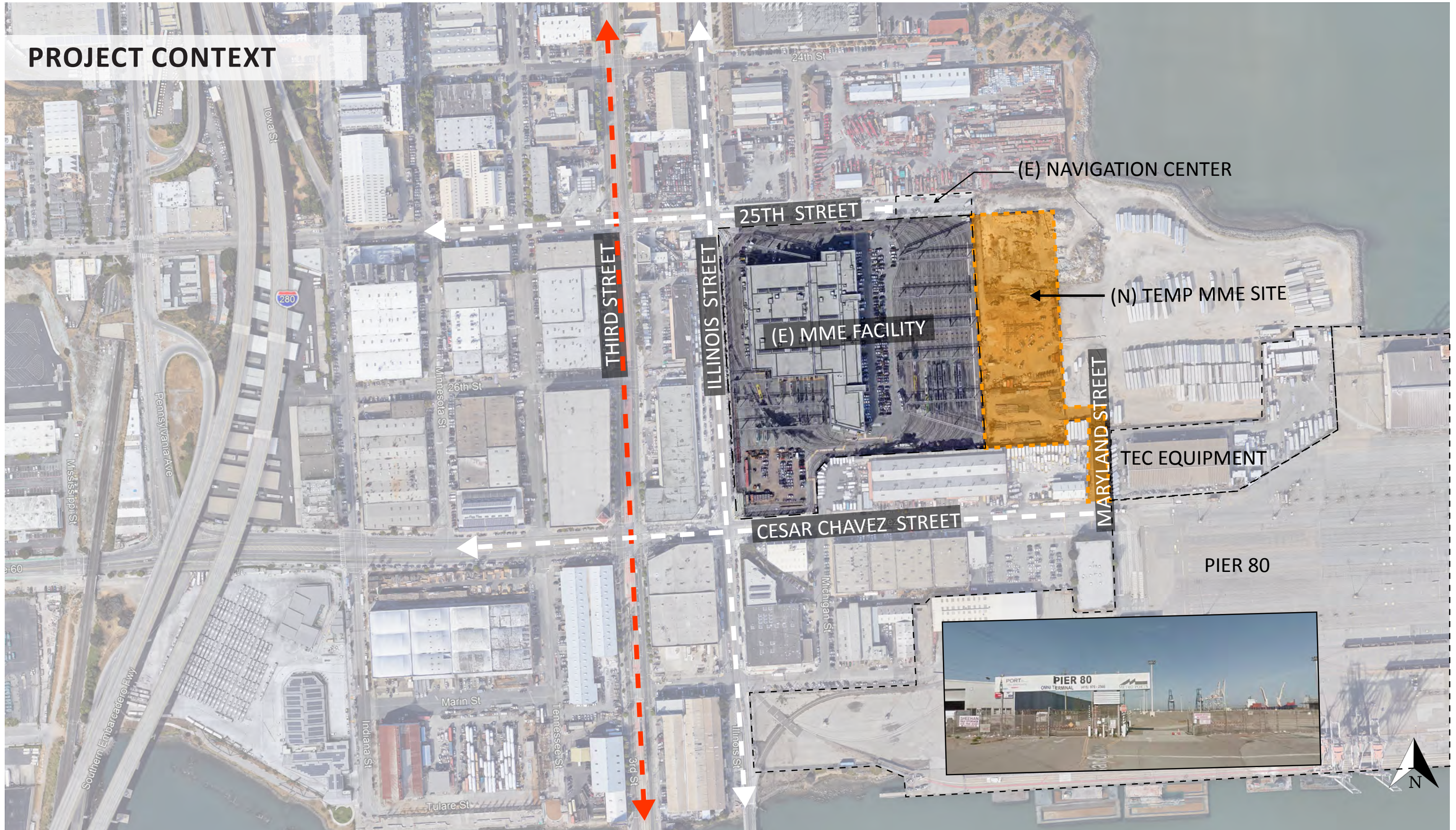
PROJECT CONTEXT



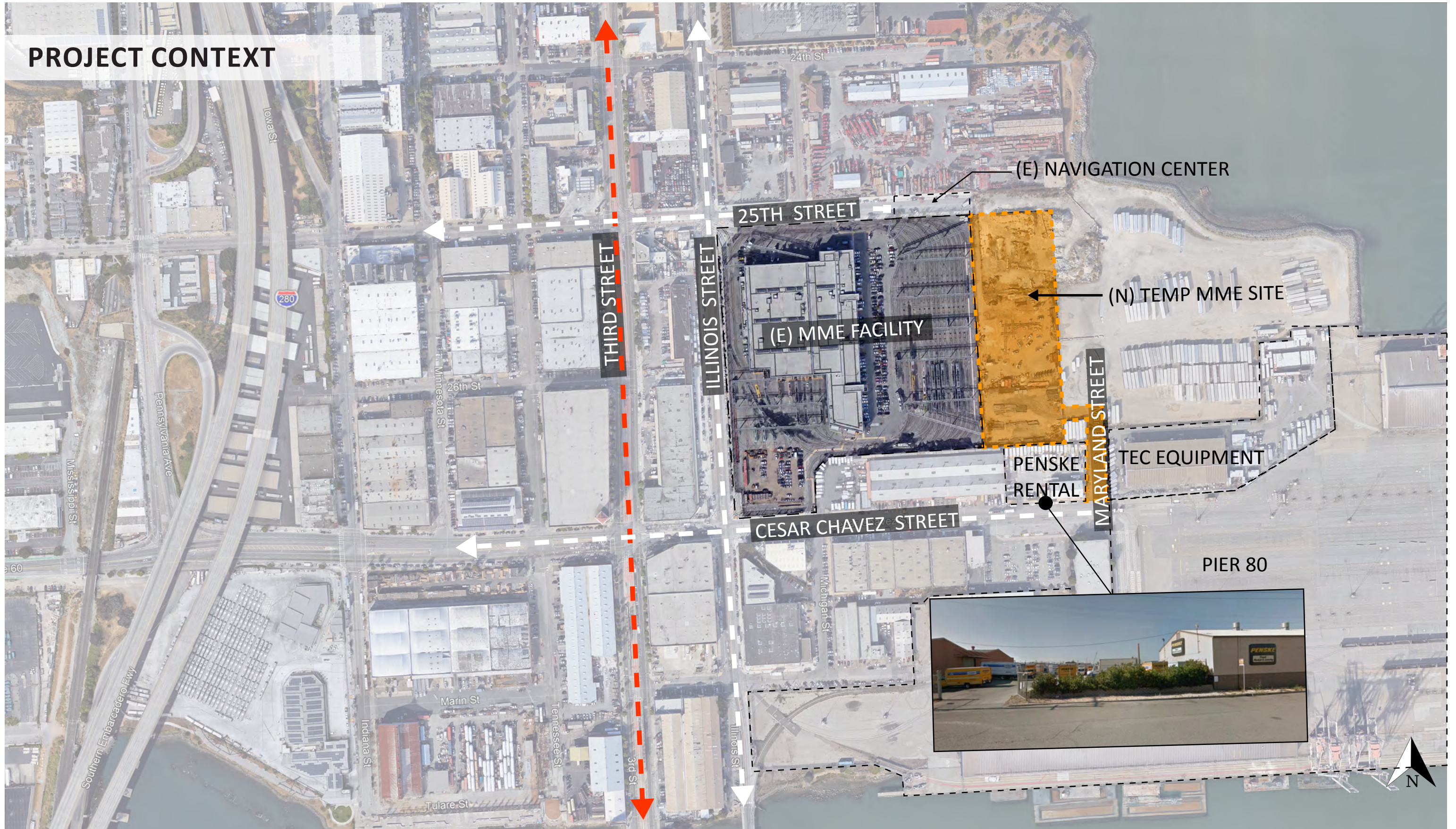
PROJECT CONTEXT



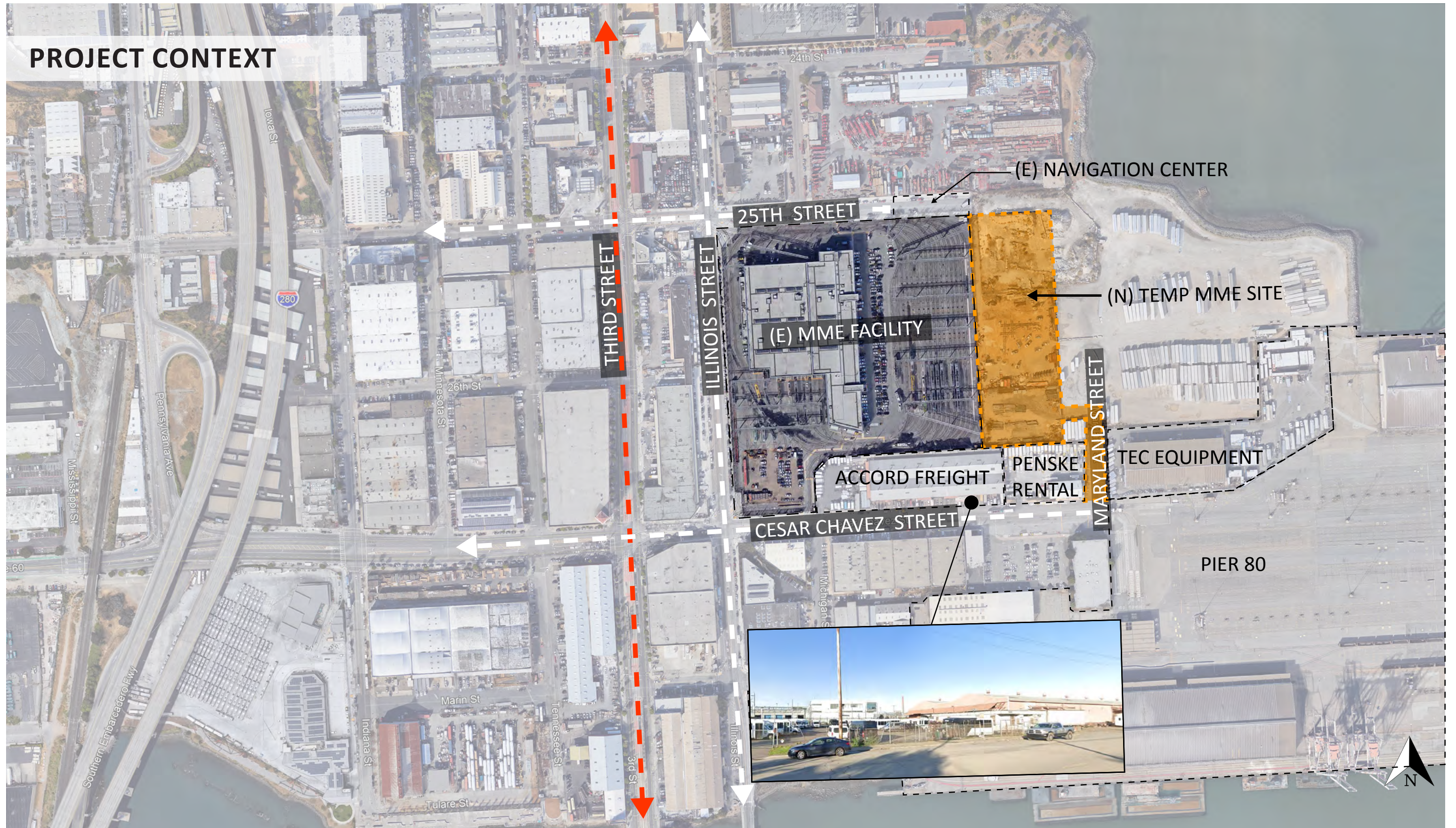
PROJECT CONTEXT



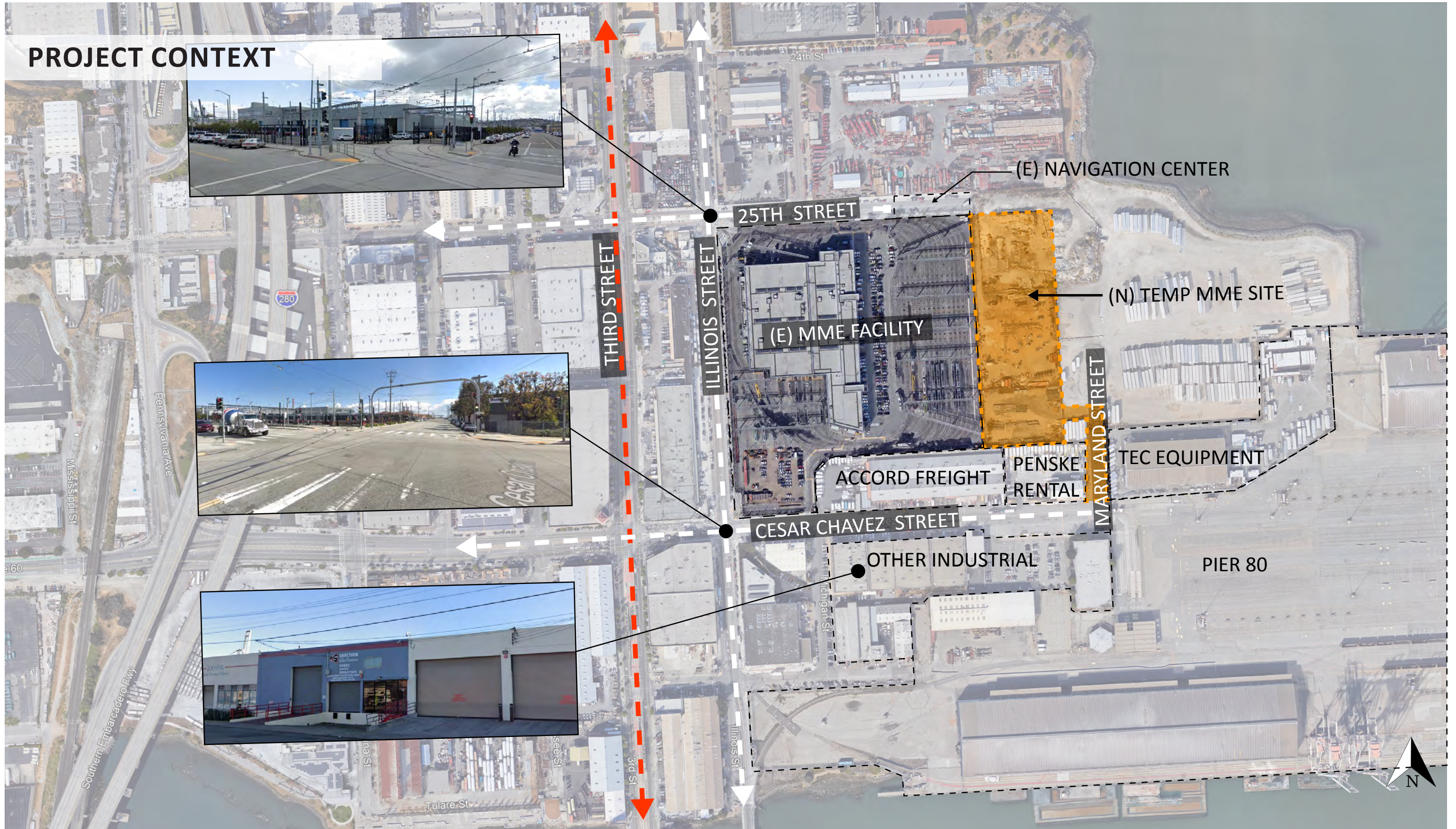
PROJECT CONTEXT



PROJECT CONTEXT



PROJECT CONTEXT



SITE STREET VIEWS



MARYLAND STREET - LOOKING NORTH **1**



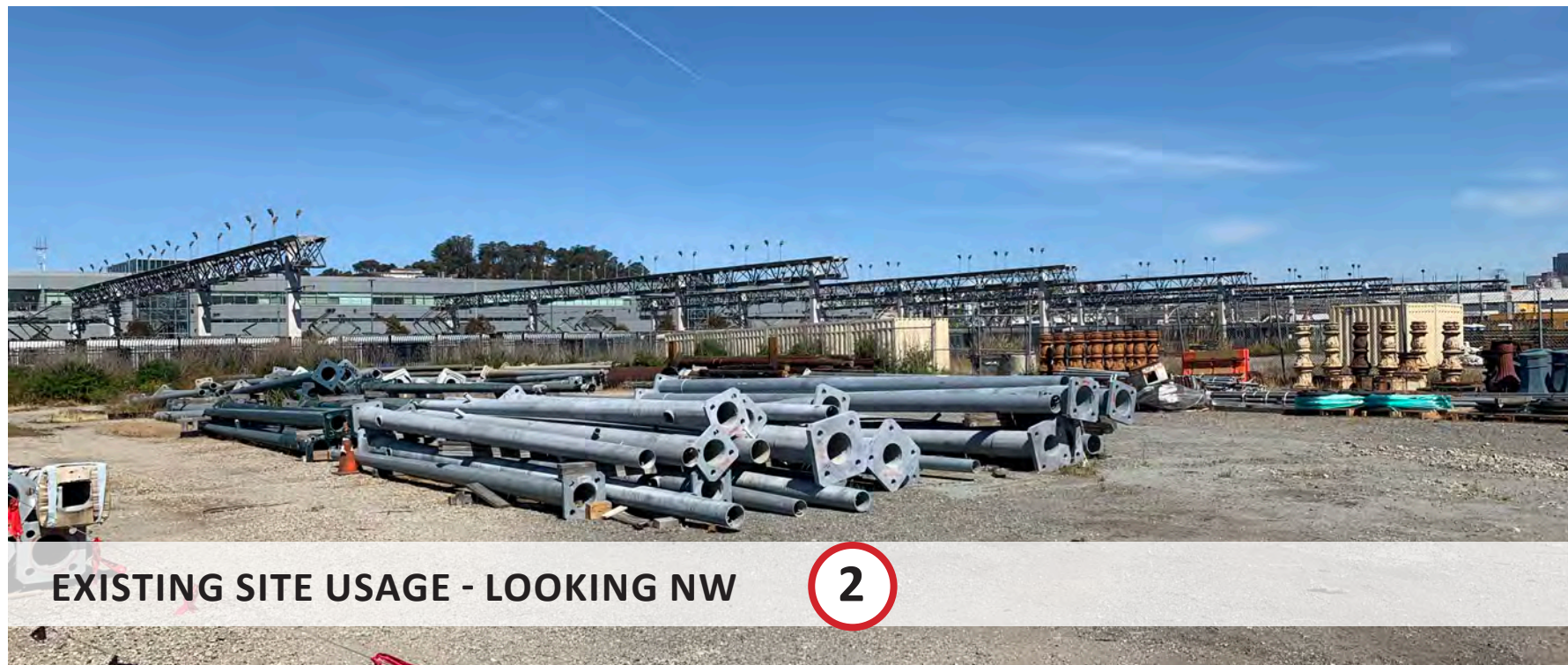
MARYLAND STREET - LOOKING SOUTH **2**



SITE STREET VIEWS



EXISTING SITE ENTRY - LOOKING WEST **1**



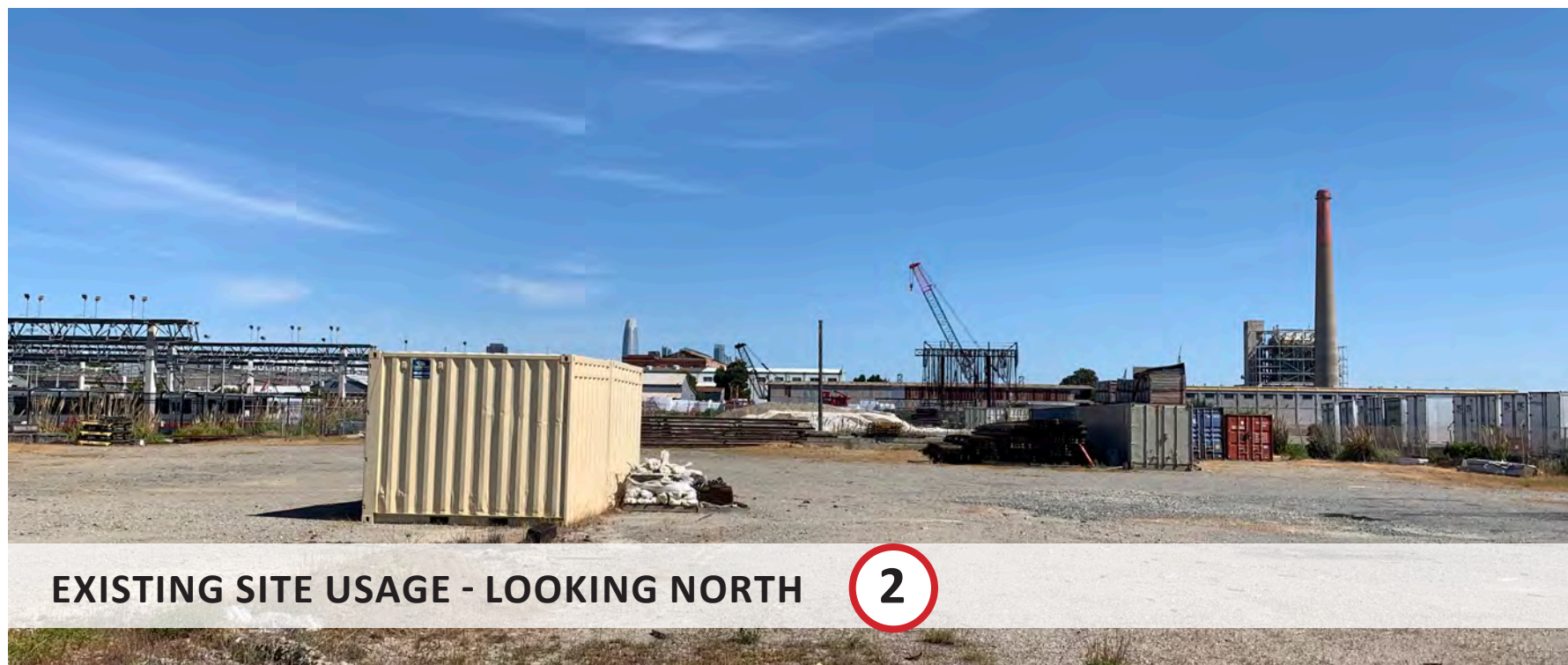
EXISTING SITE USAGE - LOOKING NW **2**



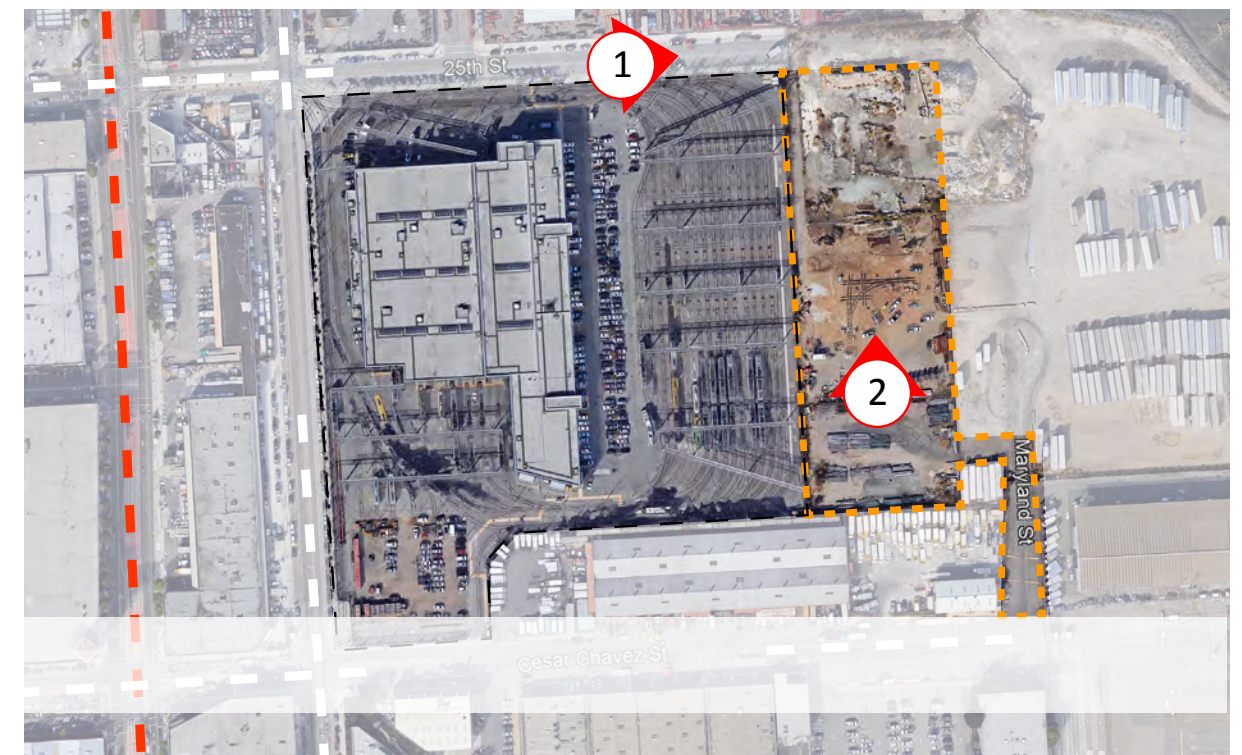
SITE STREET VIEWS



25TH STREET - DEAD END OCCUPIED BY NAVIGATION CENTER 1



EXISTING SITE USAGE - LOOKING NORTH 2



2



EXISTING SITE

EXISTING MME FACILITY

NEW PROPOSED MME TEMPORARY FACILITY

THIRD ST

ILLINOIS ST

25TH ST

CESAR CHAVEZ ST

MARYLAND ST

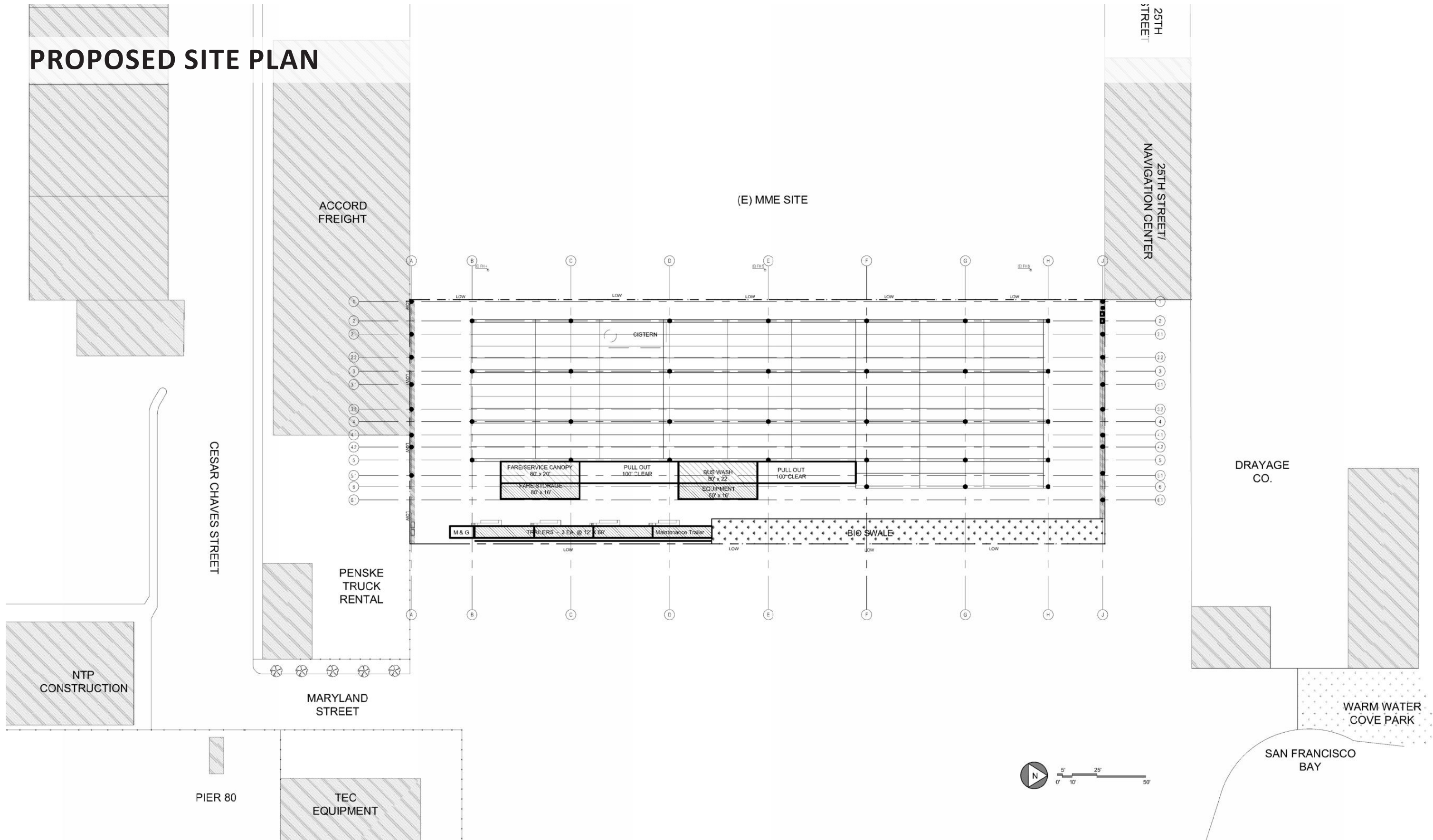
PROPOSED SITE



PROPOSED SITE



PROPOSED SITE PLAN



EXISTING FACILITY AND MATERIALS



HARDSCAPE OPTIONS / TREATMENTS

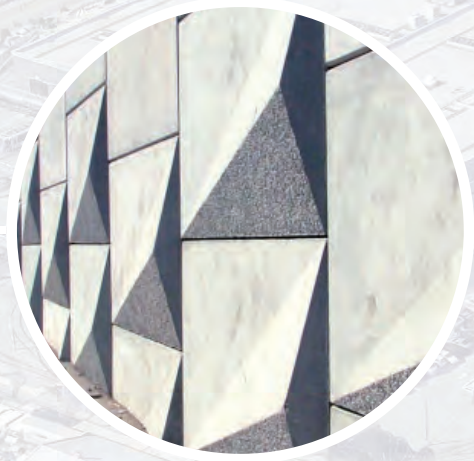
existing materials



FIREWALL



1. PATTERNED CONCRETE



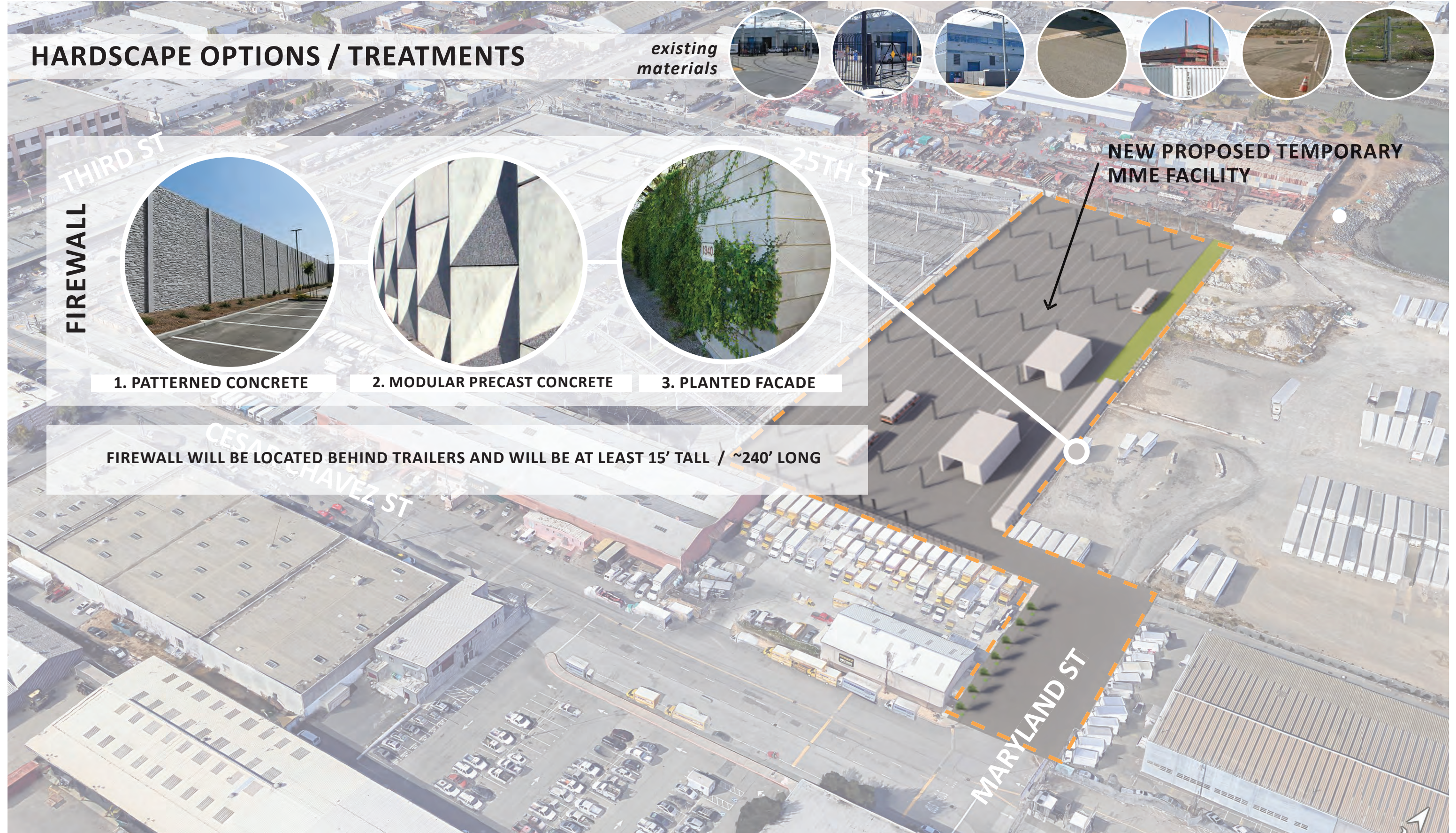
2. MODULAR PRECAST CONCRETE



3. PLANTED FACADE

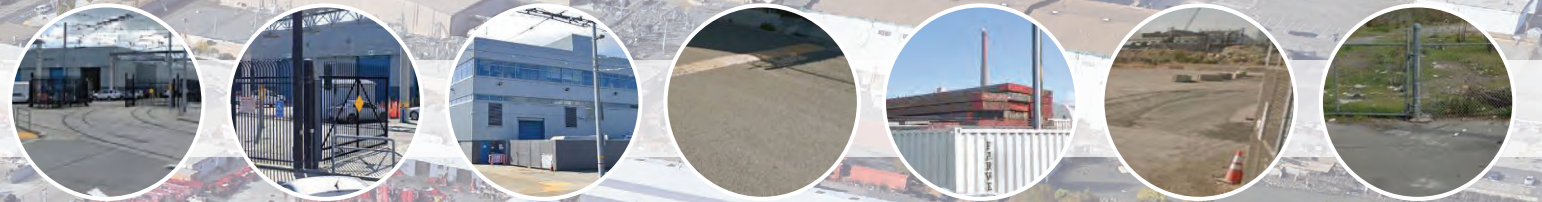
NEW PROPOSED TEMPORARY MME FACILITY

FIREWALL WILL BE LOCATED BEHIND TRAILERS AND WILL BE AT LEAST 15' TALL / ~240' LONG



HARDSCAPE OPTIONS / TREATMENTS

existing materials



THIRD ST

FIREWALL



1. PATTERNED CONCRETE



2. MODULAR PRECAST CONCRETE



3. PLANTED FACADE

25TH ST

NEW PROPOSED TEMPORARY MME FACILITY

SLIDING GATE / ENTRY PORTAL



1. LASER CUT PATTERN



2. BENT / FORMED STEEL



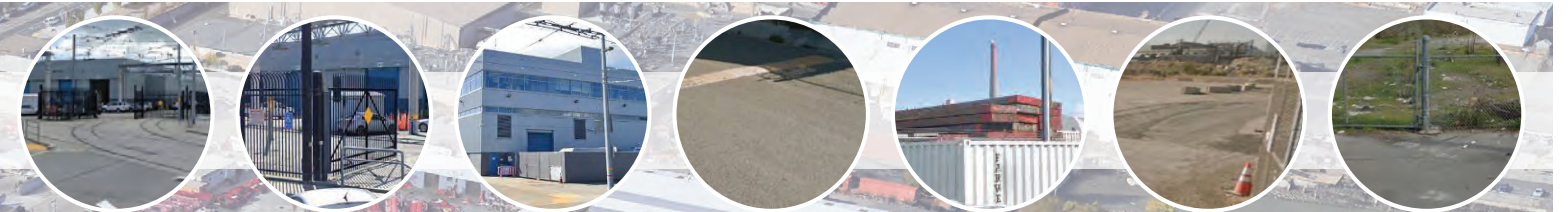
3. STEEL PICKET

CESAR CHAVEZ ST

MARYLAND ST

HARDSCAPE OPTIONS

existing materials

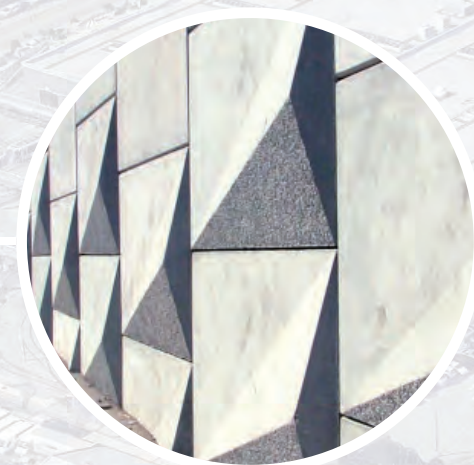


THIRD ST

FIREWALL



1. PATTERNED CONCRETE



2. MODULAR PRECAST CONCRETE



3. PLANTED FACADE

25TH ST

NEW PROPOSED TEMPORARY MME FACILITY

BIOSWALE



1. SLOPING



2. FLOW-THROUGH

CESAR CHAVEZ ST

SLIDING GATE



1. CUT STEEL



2. BENT / FORMED STEEL



3. STEEL PICKET

MARYLAND ST

PLANTING

Being situated along the bay's edge, the planting palette will consist of natives to this unique habitat. These plants are also adapted to periods of inundation and drought and will thrive in the bioswale's conditions.

BIOSWALE PLANTING



ALKALI RAGWORT
Senecio hydrophilus



CALIFORNIA GOLDENROD
Solidago californica



MARSH ROSEMARY
Westringia fruticosa



PACIFIC NINEBARK
Physocarpus capitatus



SAESIDE DAISY
Erigeron glaucus



STICKY MONKEY FLOWER
Mimulus aurantiacus



COYOTE BUSH
Baccharis pilularis



JUNEGRASS
Koeleria macrantha



DUNE SEDGE
Carex praegracilis



STREET TREE PLANTING



Street tree and accompanying planting will be determined by final street designs and will comply with local water use and conservation regulations.