

SOUTHEAST COMMUNITY CENTER ART

1550 EVANS

FINAL DESIGN REVIEW



MILDRED HOWARD

Project Lead Artist

Team:

Shelly Willis, Project Manager

Cliff Lowe, Landscape Architect - Cliff Lowe Associates

Naika Beauzil, Landscape Designer - Cliff Lowe Associates

Proposal for Southeast Community Center by Mildred Howard



Sculpture is approximately 20 feet tall

West African metal sculpture in copper, bronze and iron stands at the intersection of art, jewelry and wealth: in addition to being used as a currency for exchange, such objects could be worn as a sign of success, embodying one's power. Currency is worn in many cultures around the world, with each piece representing both a symbolic and an economic value. My proposal takes its inspiration from this powerful signifier, using forms drawn directly from traditional Ivory Coast currency to memorialize the unsung contributions of the African-American community in the Bayview / Hunter's Point neighborhood – a community that has been displaced and troubled due to gentrification and the rise of a new, digitally-oriented economy. Like the people of Bayview / Hunter's Point, these emblems of African currency are precious jewels and repositories of intangible wealth.

These forms – traditionally worn as anklets – are dramatically enlarged in bronze and oriented vertically, subtly suggesting the outline of a ship's hull. The Bayview / Hunter's Point area has always been home to immigrants; before the mass migration of African-Americans from the American South, Portuguese and Italian immigrants sailed across the oceans to make their homes there. My own family was part of the African-American migration from the American South in the days when cattle were herded down 3rd Street; they worked in shipyards and local restaurants, saving their money to buy a house in one of the only places in the country where African-Americans were allowed to buy property. This work will stand as an homage to the travels, trials, and perseverance of immigrants and poor residents of any race or ethnicity; those who worked in the factories and shipyards, who cleaned houses and swept streets in Pacific Heights to give their children a piece of the American dream. Its universal, iconic shape simultaneously calls to mind the perpetual movement of immigrants and the hard-fought wealth — both economic and intangible — needed to build their communities, standing tall as a proud and dignified reminder that we all ultimately arrived in this country from somewhere else.



Antique West African currency

Mildred Howard
November 6, 2019





SCULPTURES

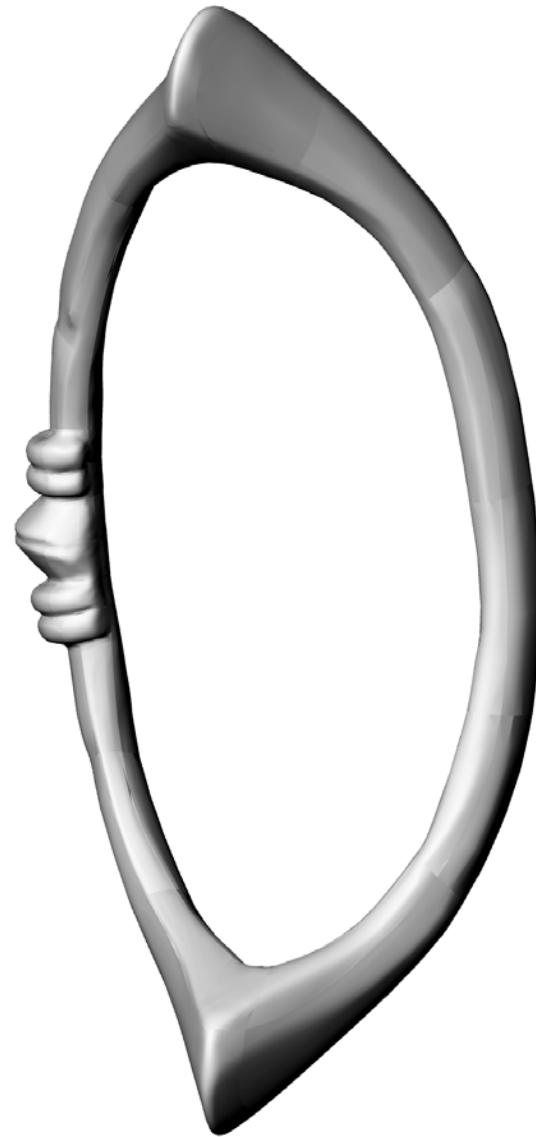
SOUTHEAST COMMUNITY CENTER ART AT 1500 EVANS
FINAL SECC SCLUPTURE & PLAZA DESIGN | 12.09.20

sfac
san francisco
arts commission

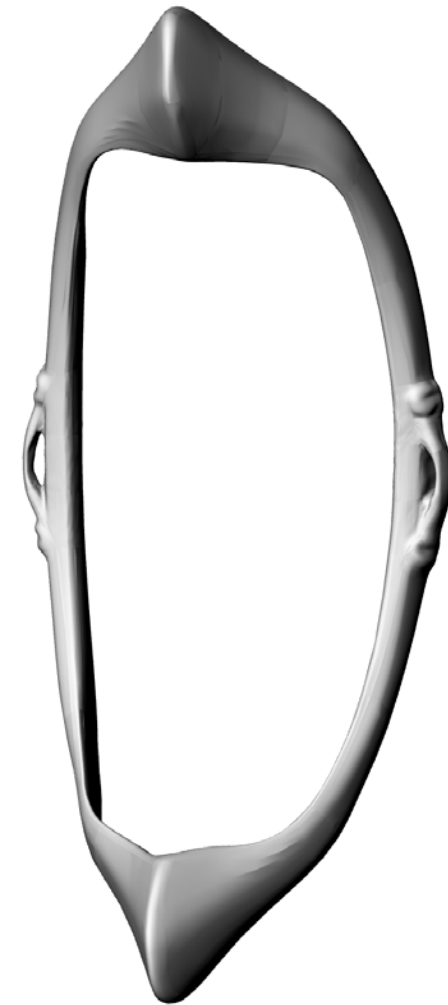
CLA
CLIFF LOWE
ASSOCIATES



18'

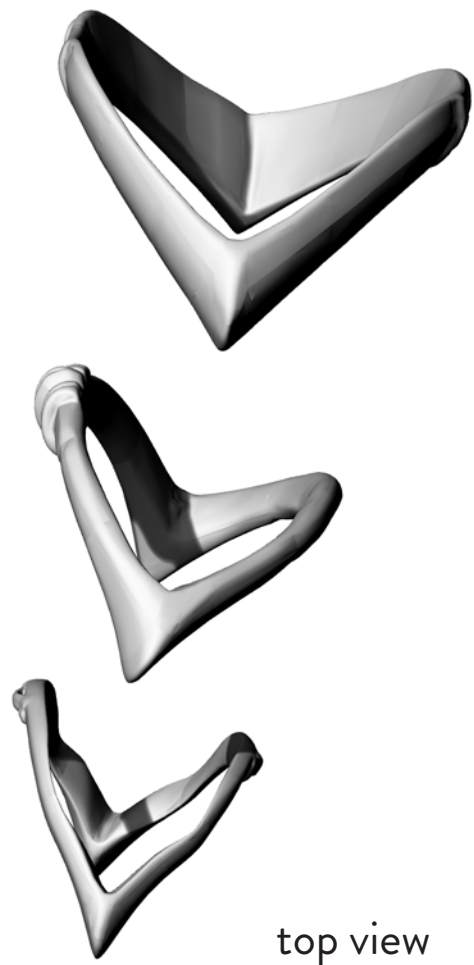


16'

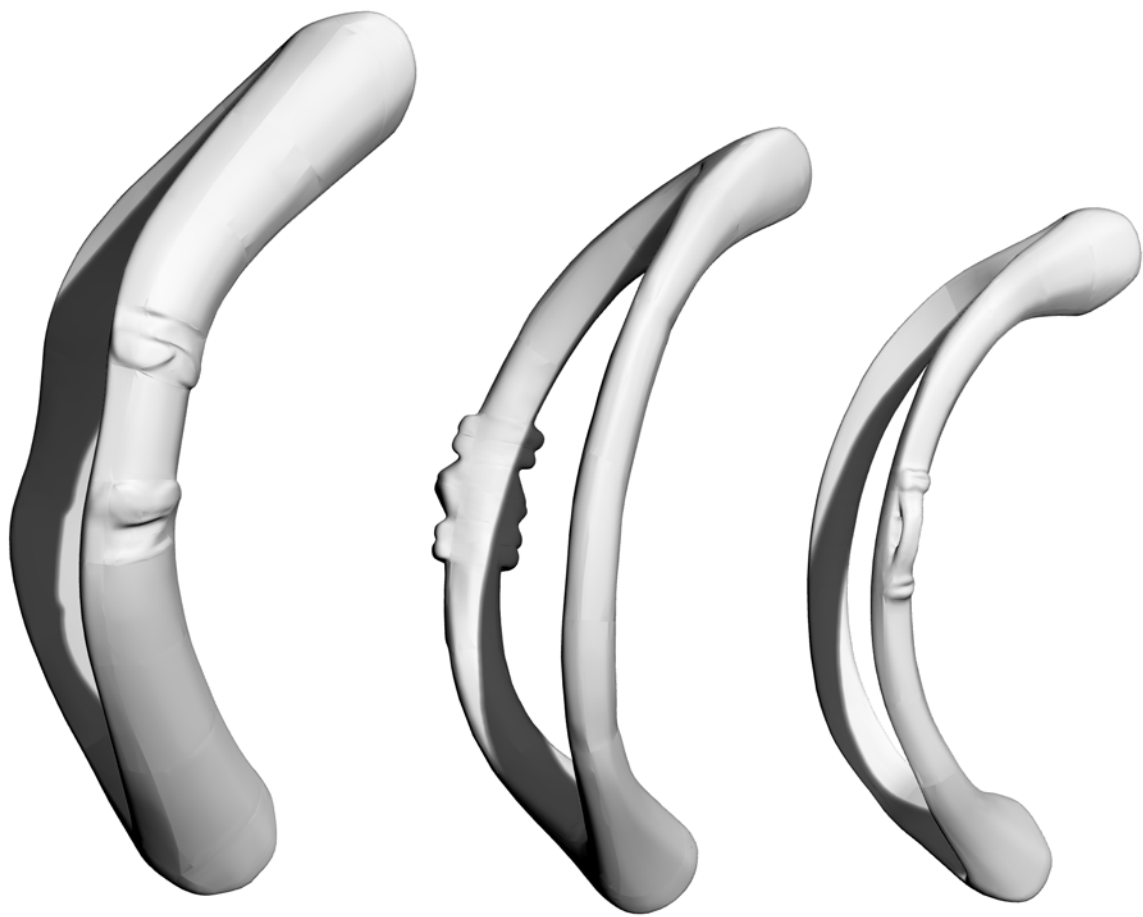


14'

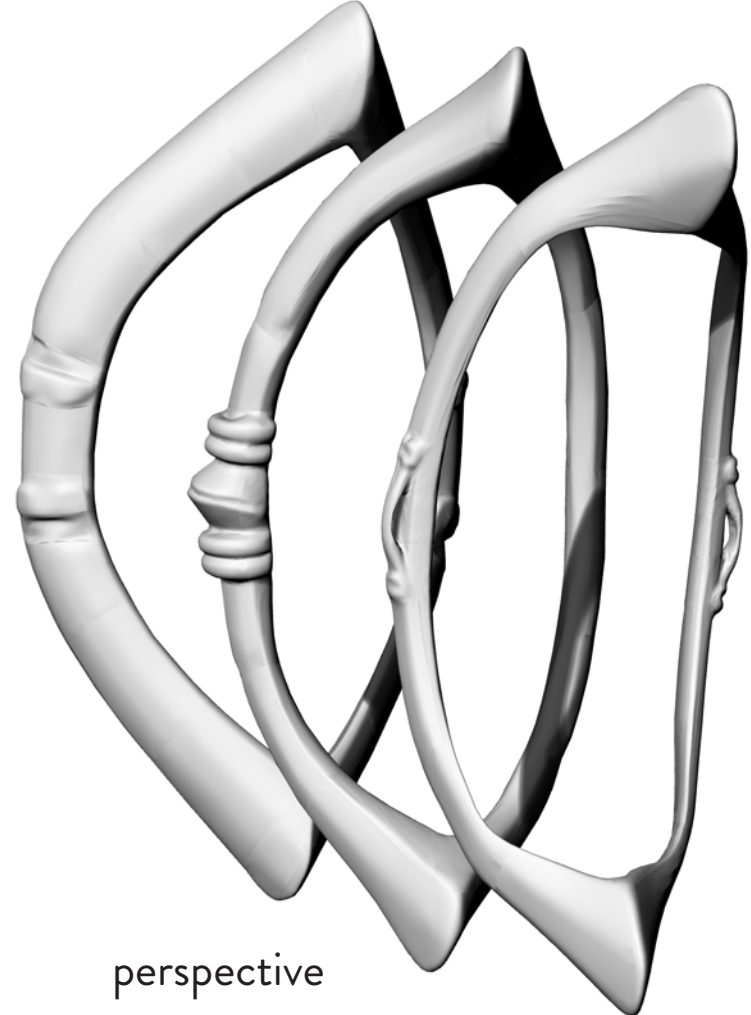
3D VIEWS OF SCULPTURES



top view



side view



perspective

3D VIEWS OF SCULPTURES



front view

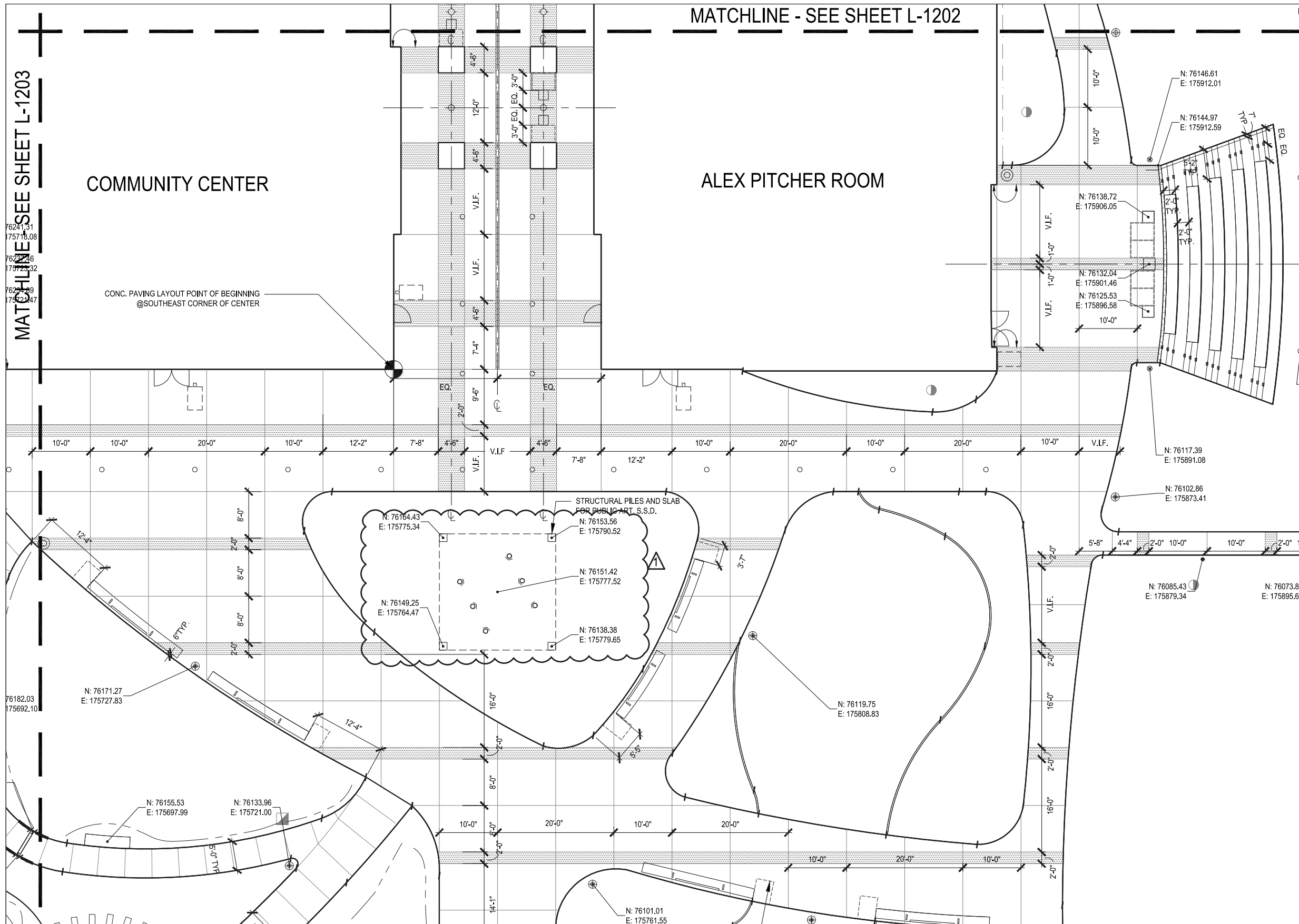


SCULPTURES

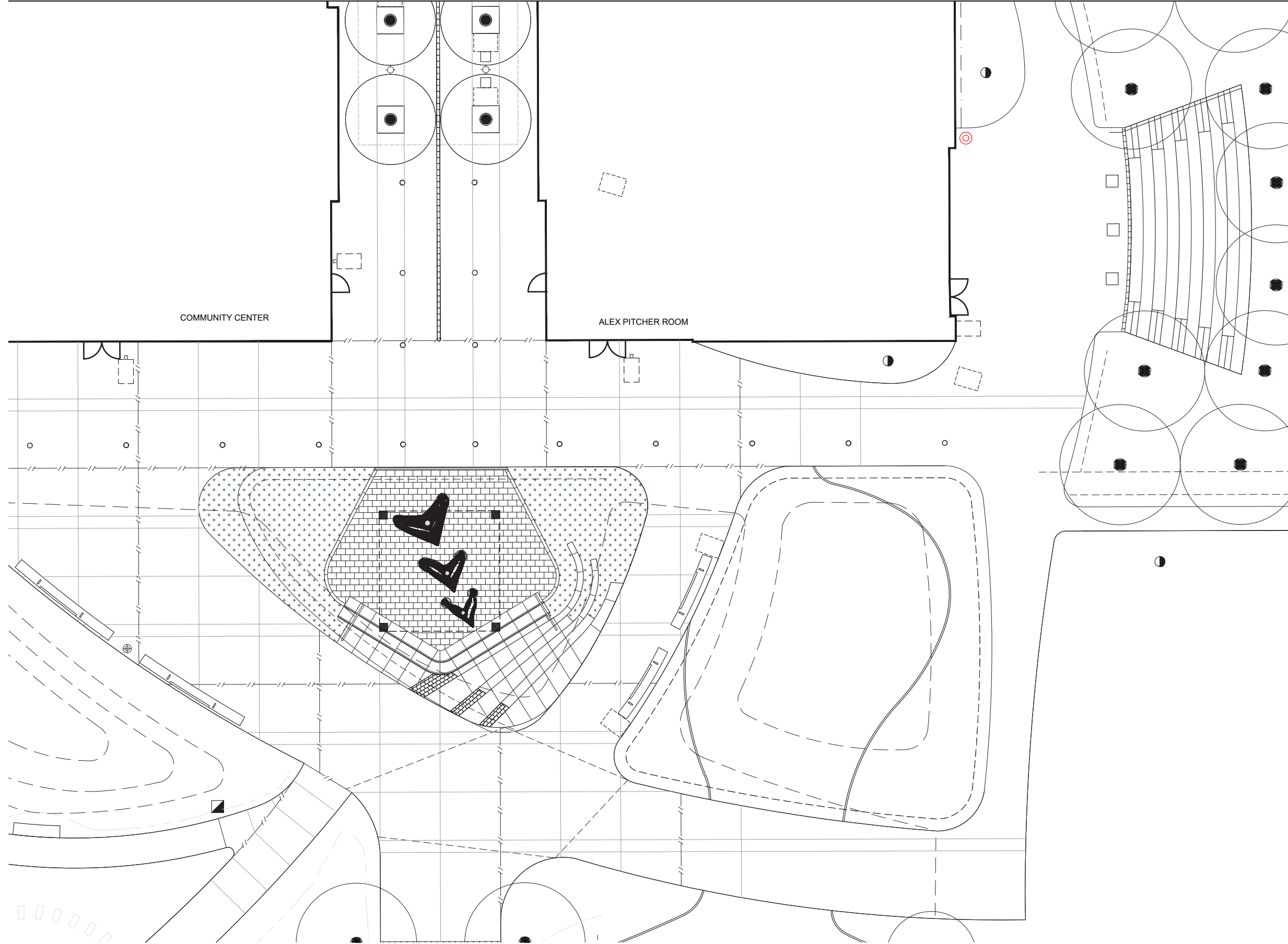
SOUTHEAST COMMUNITY CENTER ART AT 1500 EVANS
FINAL SECC SCULPTURE & PLAZA DESIGN | 12.09.20

sfac
san francisco
arts commission

CLA
CLIFF LOWE
ASSOCIATES



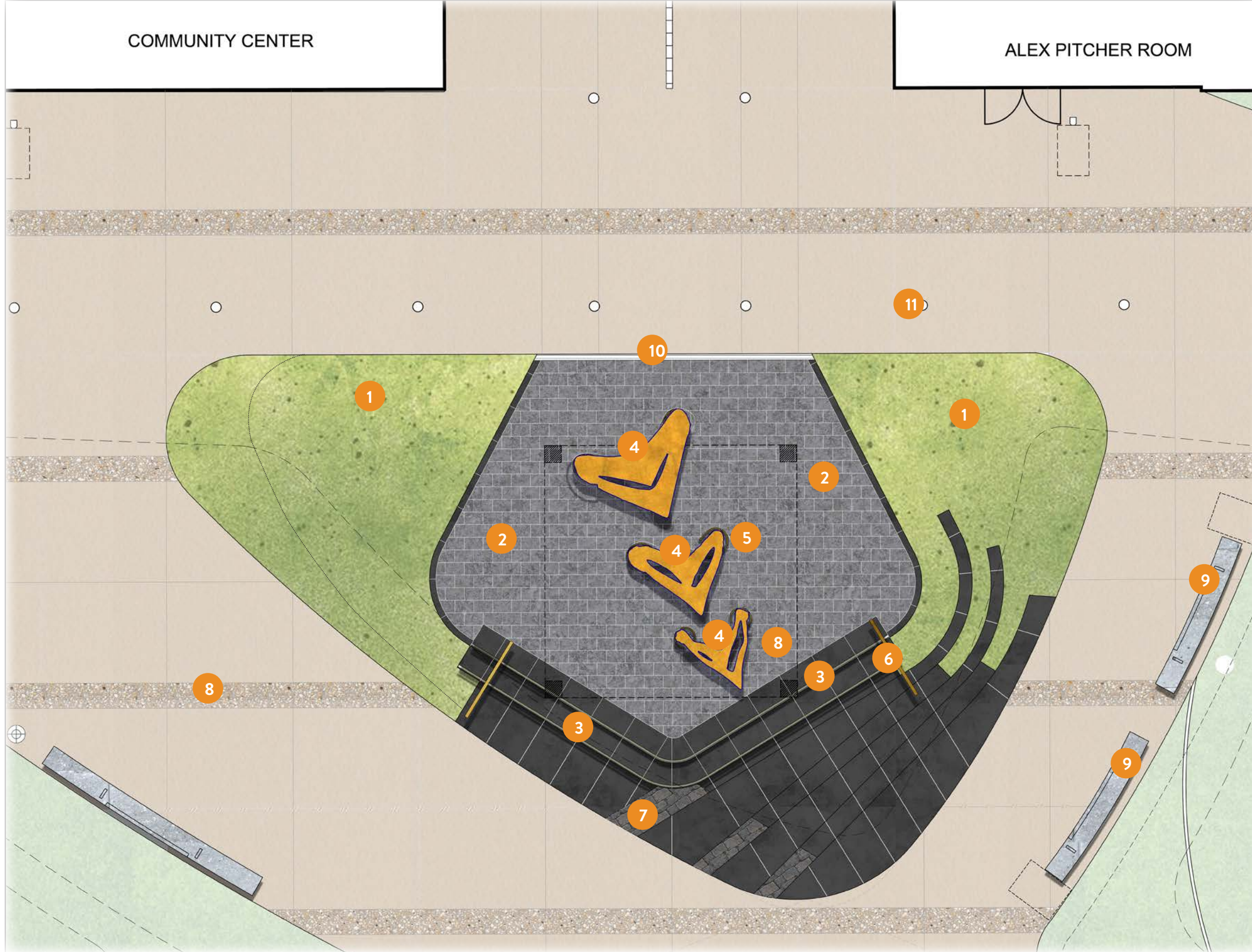
PREVIOUS OVERALL PLAN BY DPW



CURRENT OVERALL PLAN

COMMUNITY CENTER

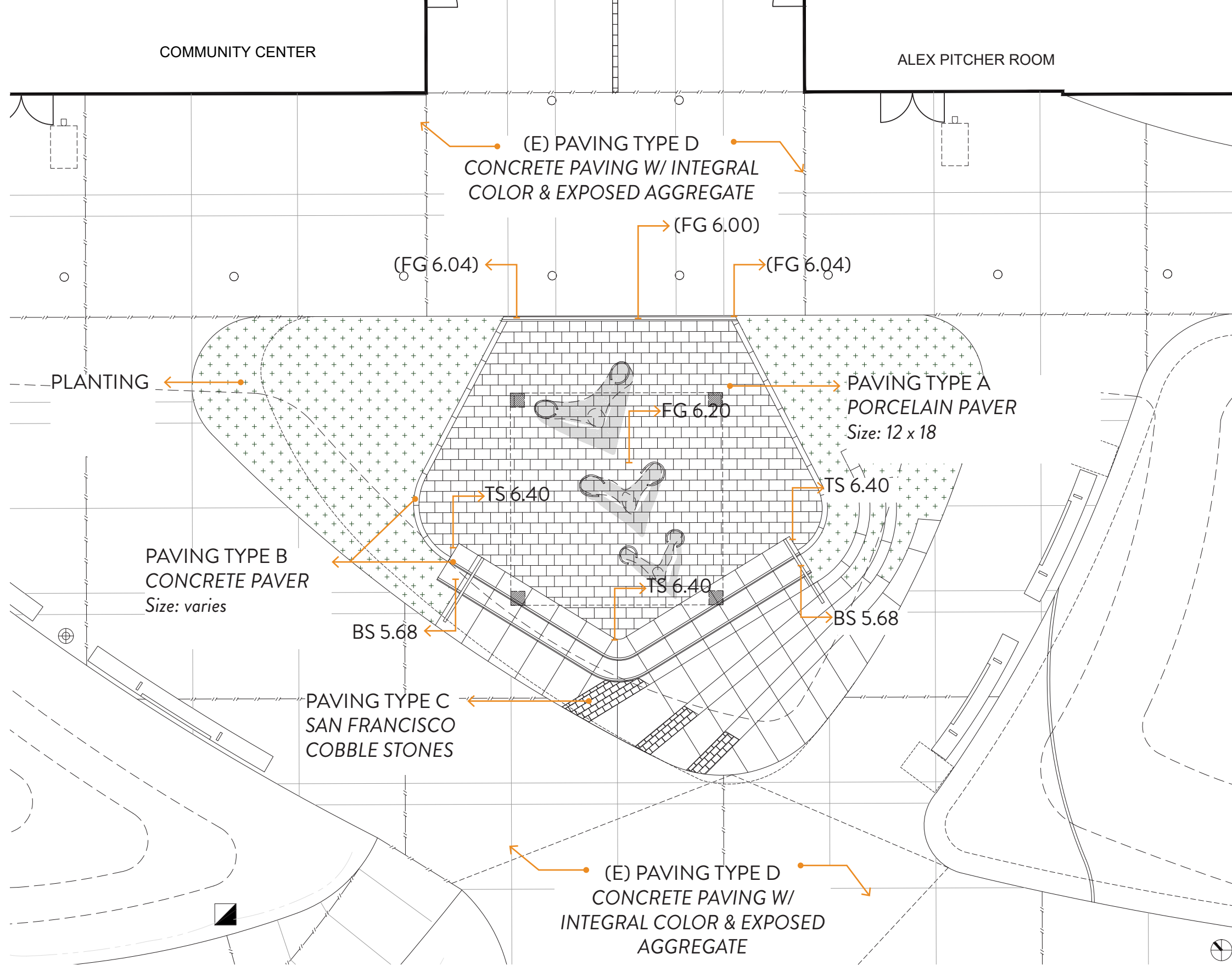
ALEX PITCHER ROOM



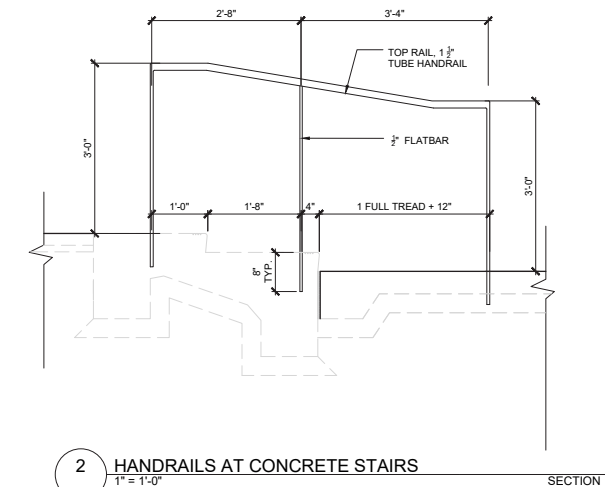
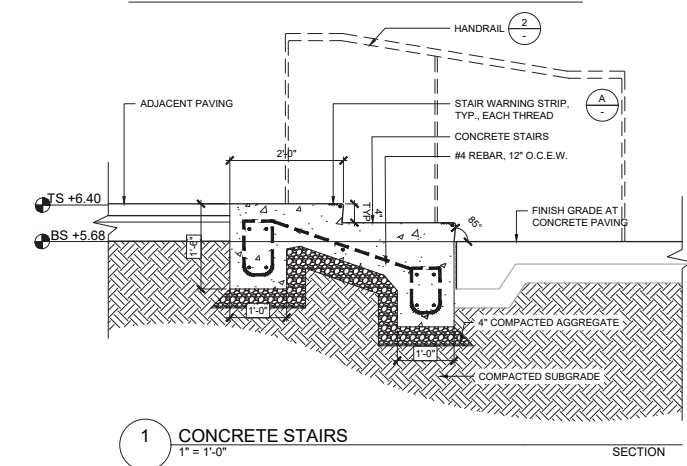
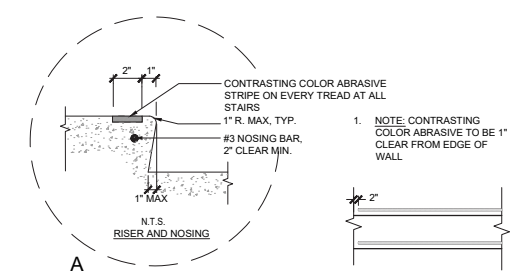
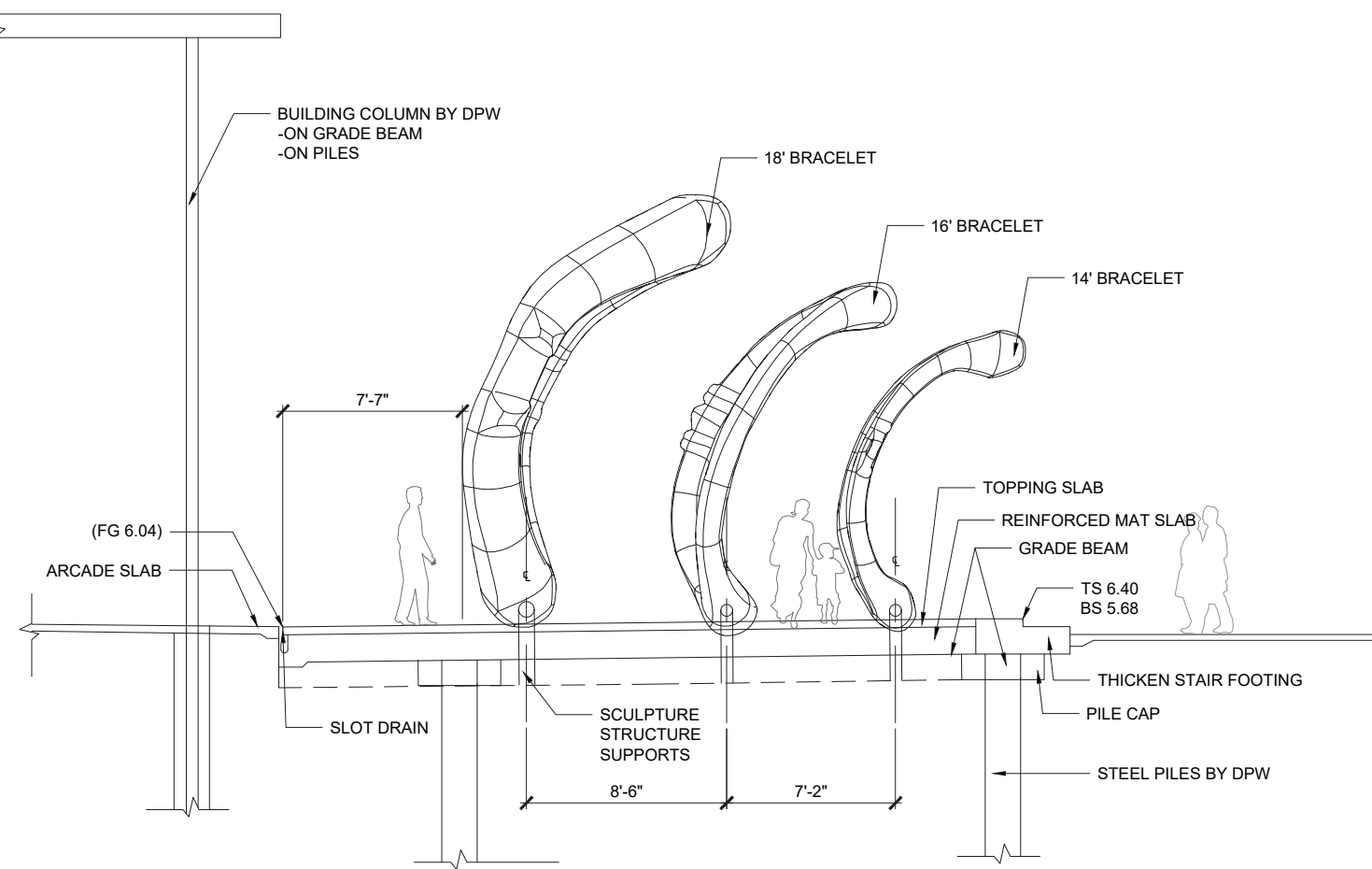
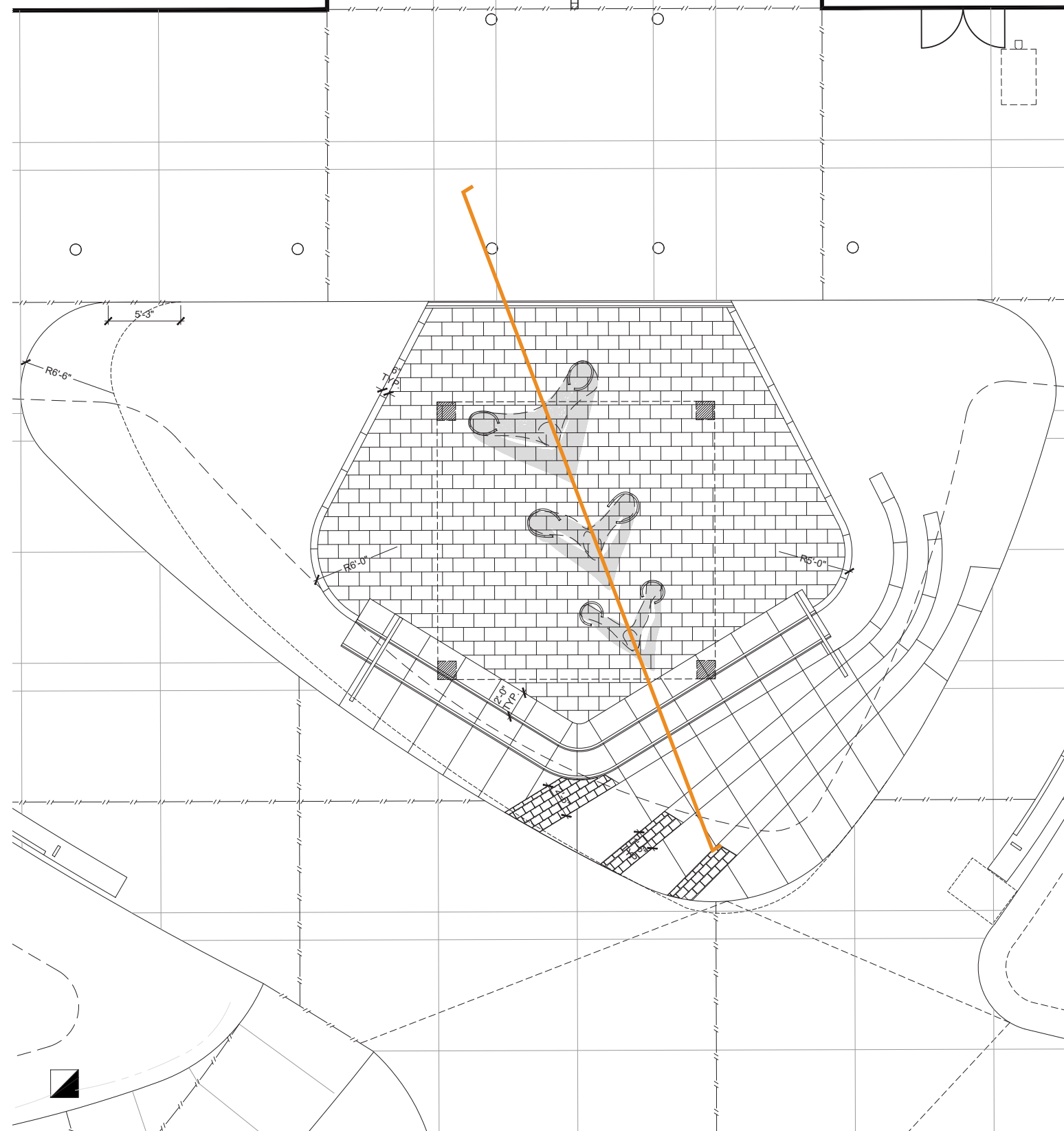
KEY

- 1 PLANTING
- 2 PLAZA
- 3 CONCRETE STEPS
- 4 SCULPTURES
- 5 CANE DETECTORS
- 6 HANDRAILS
- 7 COBBLESTONE BAND
- 8 CONCRETE BAND
- 9 EXISTING BENCH RELOCATED
- 10 PROPOSED SLOT DRAIN
- 11 BUILDING CANOPY

ILLUSTRATIVE PLAN



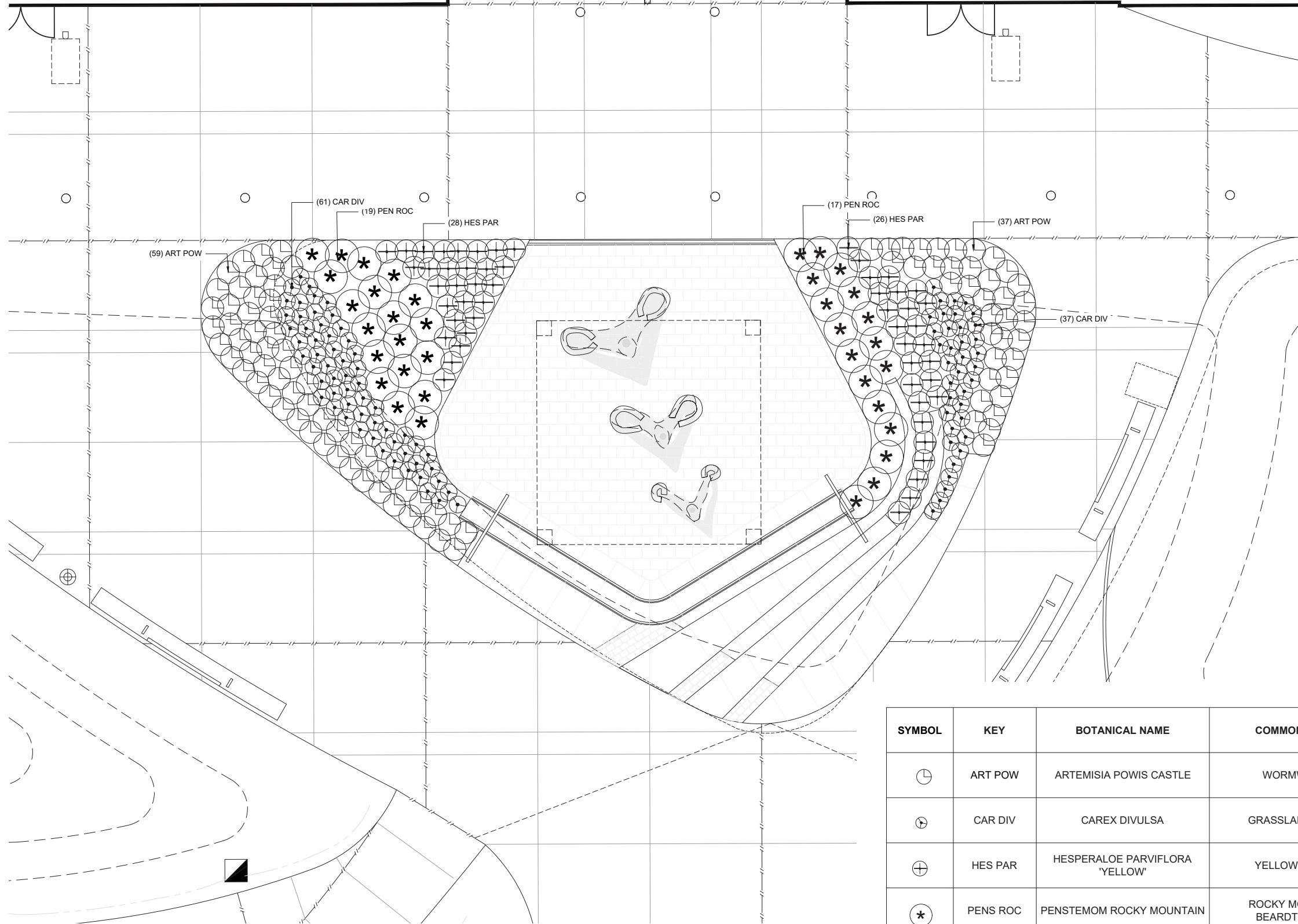
MATERIALS PLAN



SECTION & DETAILS

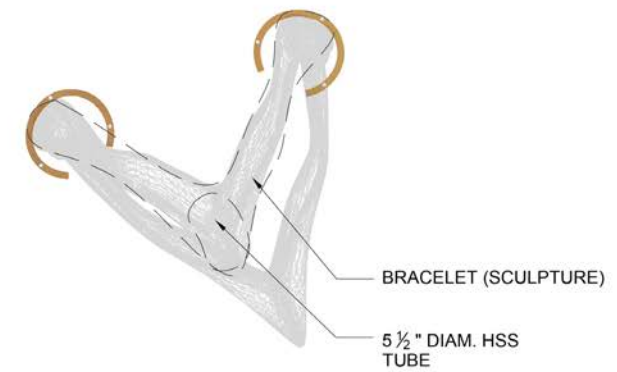
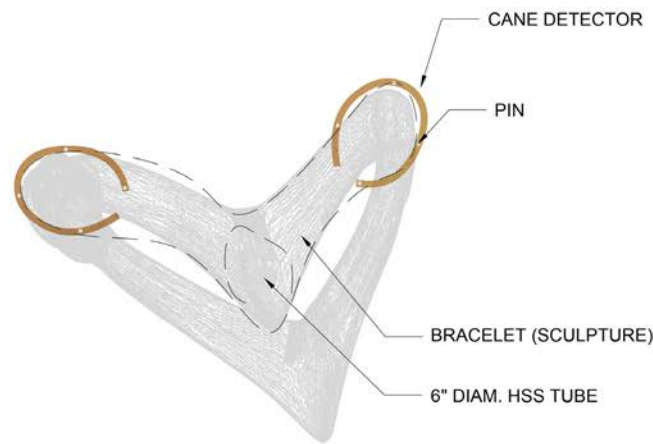
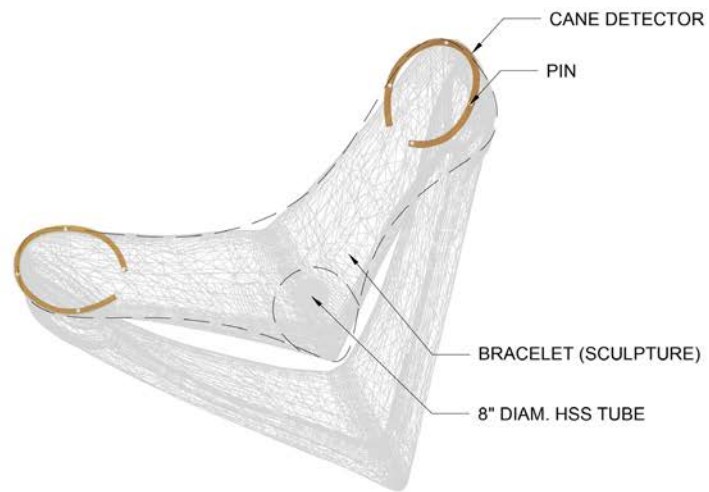
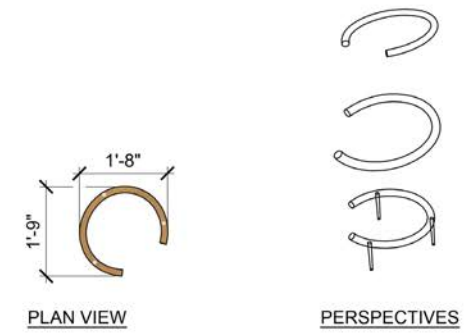
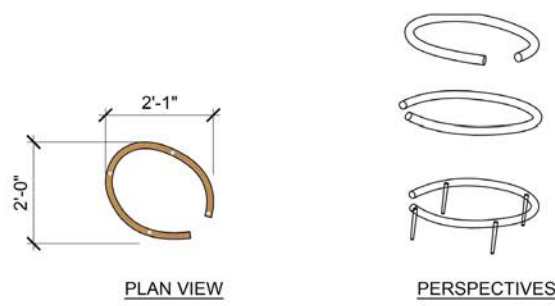
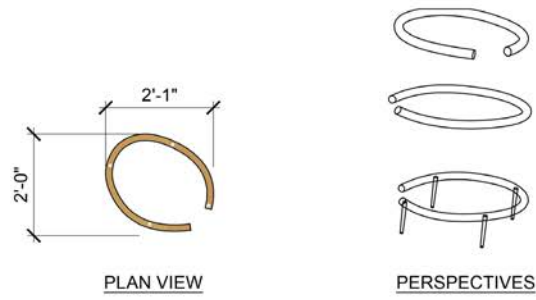
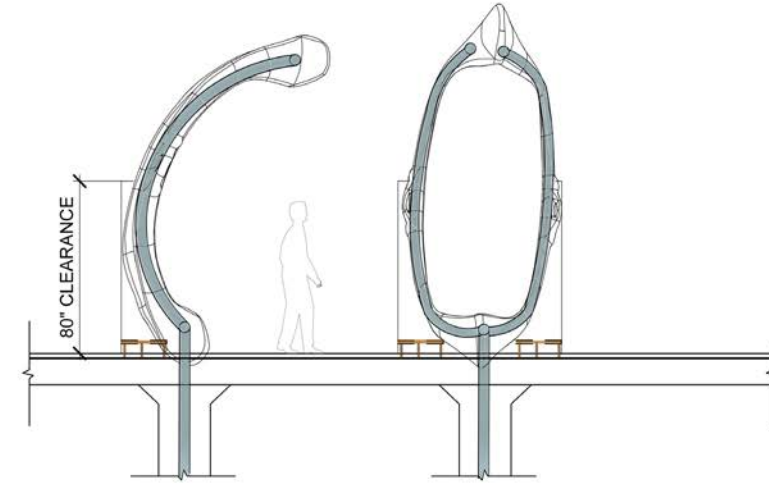
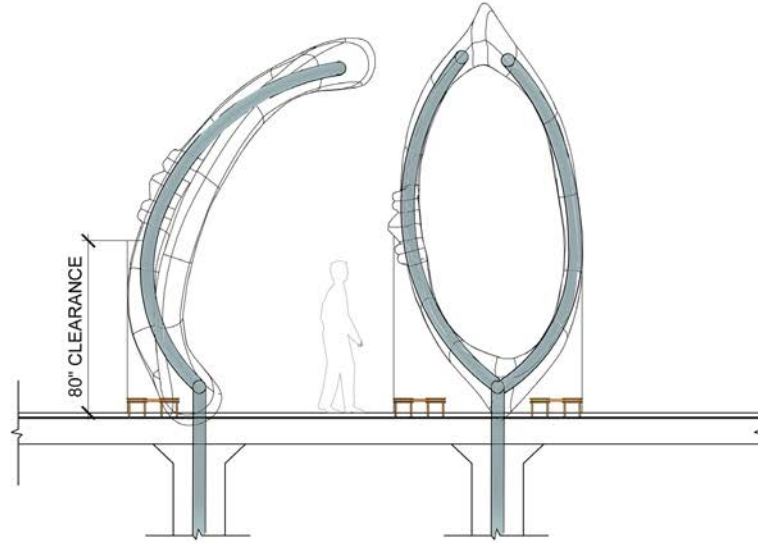
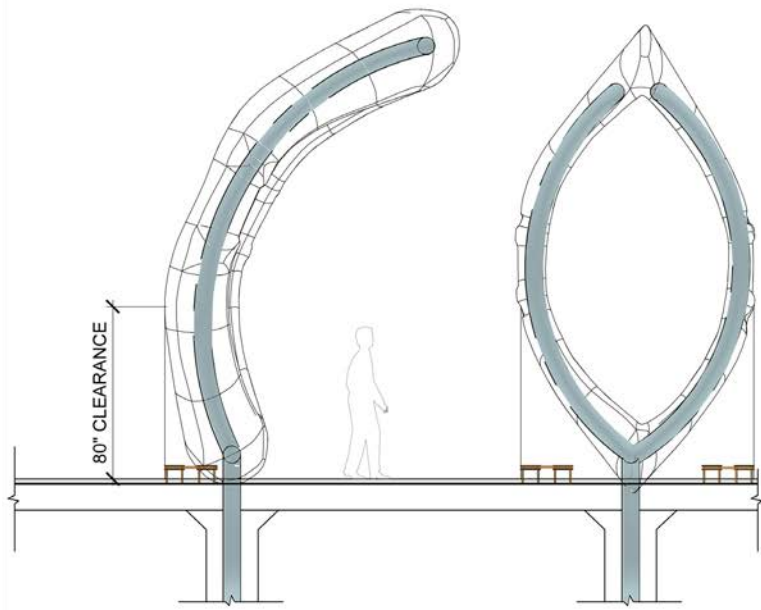
COMMUNITY CENTER

ALEX PITCHER ROOM



SYMBOL	KEY	BOTANICAL NAME	COMMON NAME	SIZE	SPACING	QUANTITY
⊕	ART POW	ARTEMISIA POWIS CASTLE	WORMWOOD	5 GAL	AS SHOWN	96
⊙	CAR DIV	CAREX DIVULSA	GRASSLAND EDGE		AS SHOWN	61
⊕	HES PAR	HESPERALOE PARVIFLORA "YELLOW"	YELLOW YUCCA		AS SHOWN	54
⊛	PENS ROC	PENSTEMOM ROCKY MOUNTAIN	ROCKY MOUNTAIN BEARDTONGUE		AS SHOWN	36

PLANTING PLAN



18' BRACELET
1/2" = 1'-0"

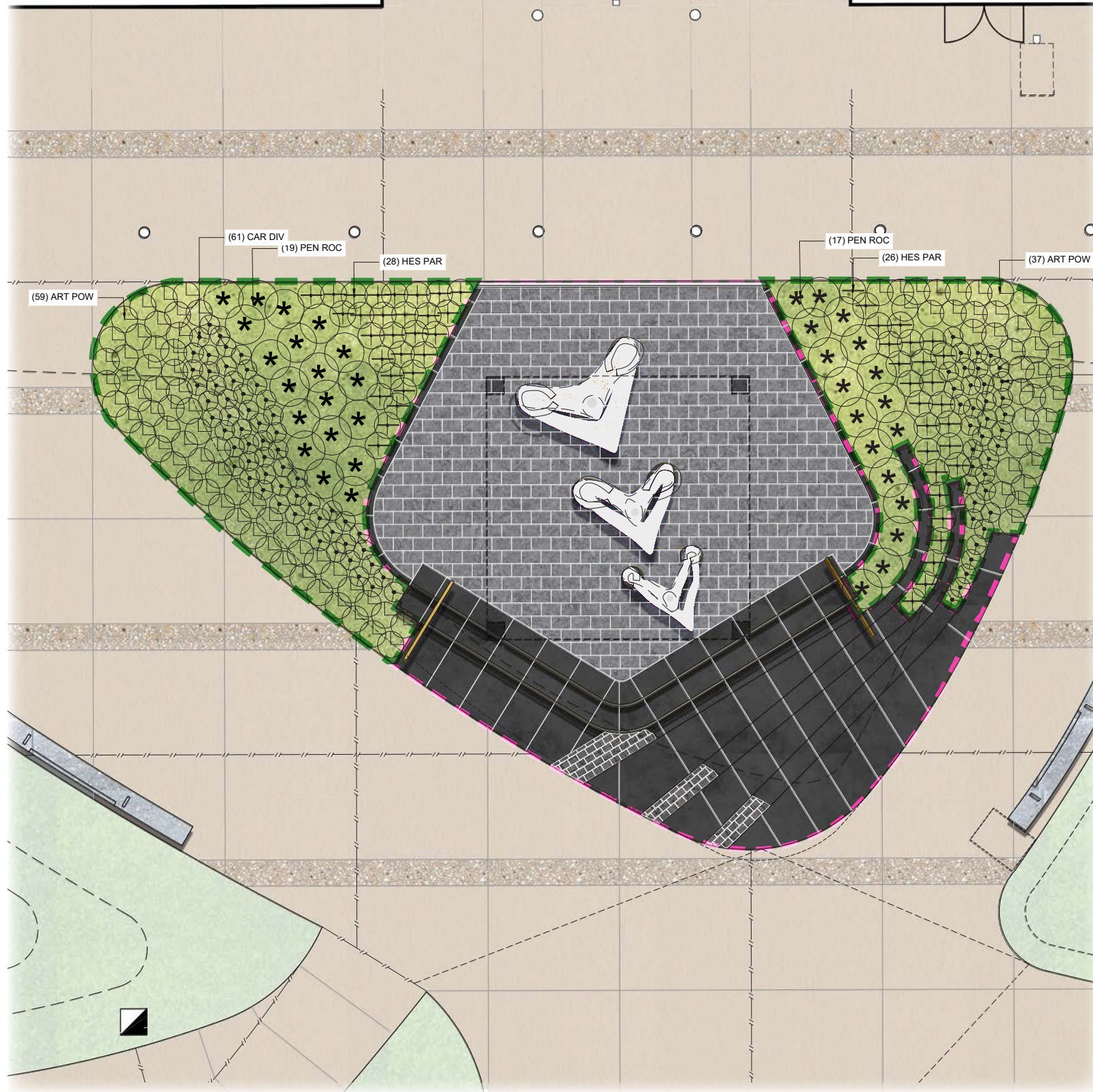
16' BRACELET
1/2" = 1'-0"

14' BRACELET
1/2" = 1'-0"

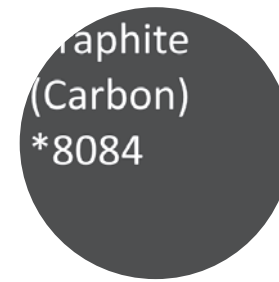
CANE DETECTORS

COMMUNITY CENTER

ALEX PITCHER



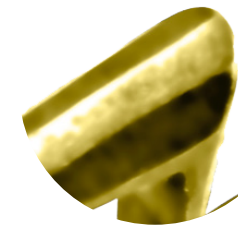
**BELGARD RIVER
PORCELAIN -
PAVER**
Hand picked finish



**DAVIS CONCRETE
COLOR**
*Medium sandblast
finish(chemical retardant)*



**SAN FRANCISCO
COBBLESTONES**



BRONZE
-handrails
-cane detectors
-sculptures



**HESPERALOE PARVIFLORA
'YELLOW'**
Key: HER PAR
Yellow yucca
H: 2-3'
W: 1.5-2'
Bloom time: Early Spring through
summer/ Evergreen



**PENSTEMOM ROCKY
MOUNTAIN**
Key: PEN ROC
Rocky Mountain beardtongue
H: 2-3'
W: 3'
Bloom time: May to August/
Evergreen



ARTEMISIA POWIS CASTLE
Key: ART POW
Wormwood
H: 2-3'
W: 1-2'
Bloom time: August to October



CAREX DIVULSA
Key: CAR DIV
Grassland sedge
H: 1-3'
W: 2'
Bloom time: green

MATERIALS PALETTE



SOUTHEAST
COMMUNITY
CENTER

VIEW FROM 3RD & EVANS



VIEW FROM THE ALLEE



VIEW NEAR THE PLAZA

