

sfac san francisco arts commission

MISSION CREEK PARK EXTENSION PUBLIC ART PROJECT PLAN

For presentation to Visual Arts Committee June 16, 2021



BACKGROUND

Located near Oracle Ballpark, Mission Creek Park is an open, green space located on the north and south side of Mission Creek within the Mission Bay South Redevelopment Area. The Office of Community Investment and Infrastructure (OCII) is responsible for the implementation of the Mission Bay South Redevelopment Plan including the use of Art Fees to create art in Public Open Spaces. In Winter 2021/2022, FOCIL-MB LLC, with its development consultant the Mission Bay Development Group (MBDG), will begin construction on an extension of Mission Creek Park South to create an additional 3.24 acres of recreational open space west of the Mission Creek Park Pavilion.

The Mission Creek Park Extension (P2 and P8) will incorporate many of the design elements already found at Mission Creek Park, including dedicated bicycling and walking paths, informal areas for sitting and gathering, and native planting. The design for P2 also calls for preserving the character and feel of an existing public park, Huffaker Park, which currently houses a community garden that will be expanded and improved as part of the P2 design. Located under the I-280 freeway, P8 will feature extensive native plantings around a dedicated bicycle and pedestrian path. Completion of construction on the park extension is anticipated for Spring 2023.

ART OPPORTUNITY

- Focal sculpture, or series of smaller sculptures, located at the entrance of Mission Creek Park where Channel Street meets Mission Bay Drive.
- Artwork may consist of durable, natural materials that are appropriate for exterior use, including metal, stone, glass, and/or wood.
- Artwork may be illuminated at night.

PROJECT GOALS

- Artwork should be inspired by and responsive to the site, including its natural and physical landscape, history, and use.
- Artwork should have a visual impact from a distance, yet be integrated into the landscape and appropriate to the scale of the site.

ART ENRICHMENT AND PROJECT BUDGET

Total Art Enrichment Amount: \$1,125,000

Artwork Budget: \$535,000, inclusive of all artist’s fees, as well as associated expenses for artwork design, fabrication, insurance, and transportation.

Site Work and Installation Allocation: \$150,000

ARTIST RECRUITMENT APPROACH AND ELIGIBILITY

Arts Commission staff will post an RFQ, which is open to professional practicing artists who reside in the United States. In addition to the RFQ applicants, artists in other Arts Commission prequalified pools may also be considered. Recruitment will focus on artists with a meaningful connection to the City and County of San Francisco, which may include if the artist currently resides, has resided in San Francisco, or has another significant connection to San Francisco. Artists will be asked to address their connection as part of the application process, and the review panel will be instructed to consider this connection as part of their scoring criteria.

ARTIST SELECTION PROCESS

After the application deadline the Arts Commission staff will screen applications to establish the pool of artists meeting the minimum eligibility requirements, which are professional practicing artists who reside in the United States. The eligible applications will be presented to an artist qualification panel consisting of one SFAC staff member, one representative of OCII, and one arts professional who will review and score the applications to identify the short list of qualified artists to be considered for the project opportunity. The scoring criteria will include the artist’s meaningful connection to San Francisco.

The list of qualified artists will be presented to the Mission Creek Park Extension Project Artist Review Panel consisting of two representatives of OCII, one representative of Mission Creek Park Extension design team, one Arts Commissioner, one community member, and two arts professionals. The panel will identify three finalists who will be invited to develop conceptual site specific proposals after attending an orientation session with the project team and key stakeholders. These finalists will be paid an honorarium of \$3,000 plus travel reimbursement for development of a proposal.

The Mission Creek Park Extension Project Artist Review Panel will reconvene to consider the finalists’ proposals in an interview format and will select one artist for recommendation to the Arts Commission.

COMMUNITY INVOLVEMENT

- SFAC staff will present an overview of the public art project to the Mission Creek Park Citizens Advisory Committee on May 13, 2021.

- A community representative will serve on the Mission Creek Park Extension Project Artist Review Panel and will participate in the Artist Orientation.
- The finalists' proposals will be on display for public comment on the SFAC website for two weeks prior to the final artist review panel meeting.
- The finalists' proposals will be presented by Arts Commission staff to the Mission Bay Citizen's Advisory Committee and OCII Commission for comment prior to the final artist review panel meeting.
- All review panels, Visual Arts Committee (VAC) and Commission meetings are open to the public, with an opportunity provided for public comment.

TIMELINE (Subject to change)

Project Plan Approval (OCII Commission)	June 1, 2021
Project Plan Approval (VAC)	June 16, 2021
RFQ Issued	June 21
RFQ Deadline	August 6
Qualification Panel	Week of August 9
First Project Artist Review Panel	Week of August 16
Artist Finalist Orientation	Week of August 23
Finalist Proposals Due	October 8
Final Project Artist Review Panel	Week of November 1
VAC Approval	November 17
Arts Commission Approval	December 6
Artist Under Contract	December 2021

FURTHER INFORMATION

Contact Jackie von Treskow, Public Art Project Manager at (415)252-2522 or by email at jackie.vontreskow@sfgov.org.

Mission Creek Park Extension

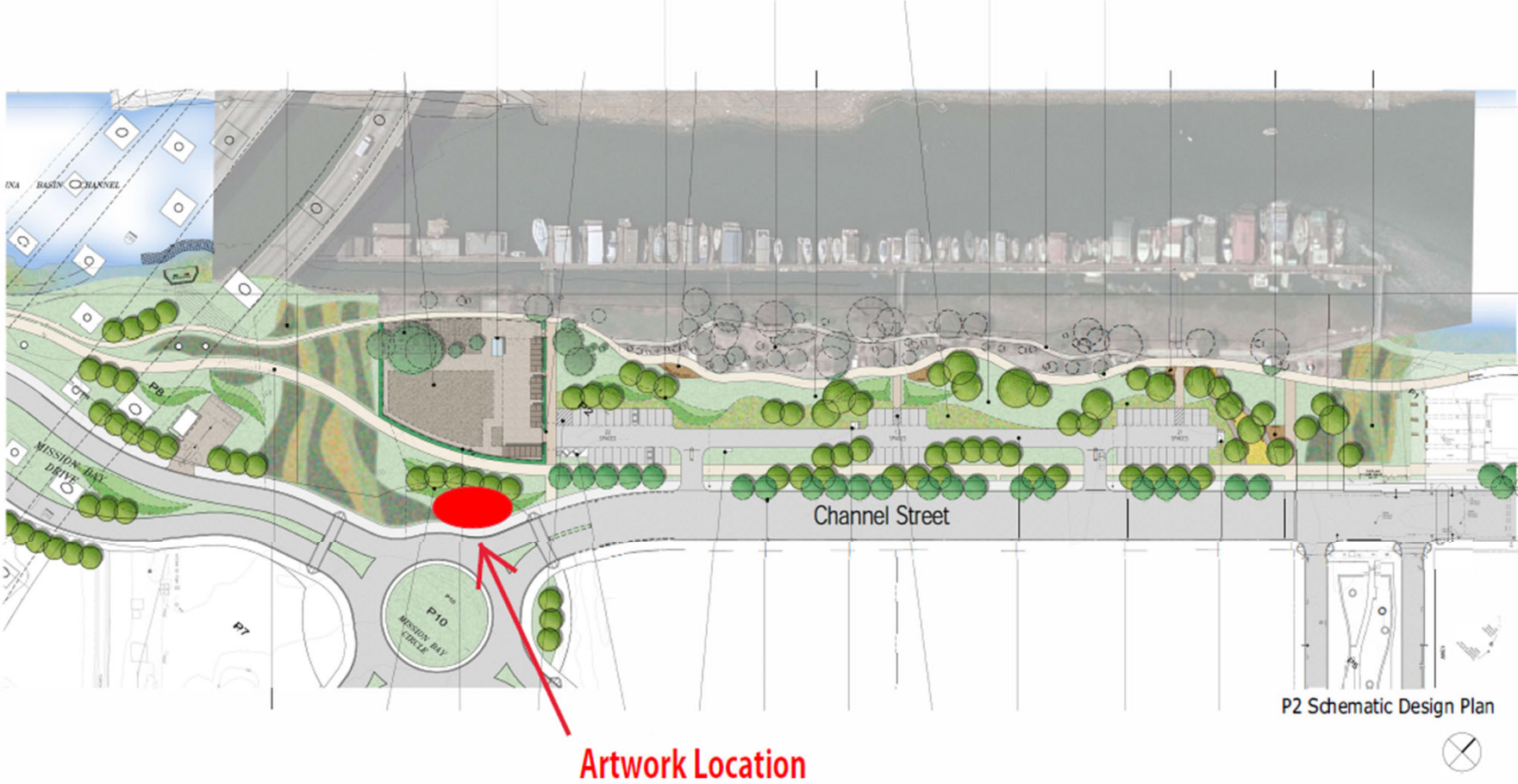


LEGEND:

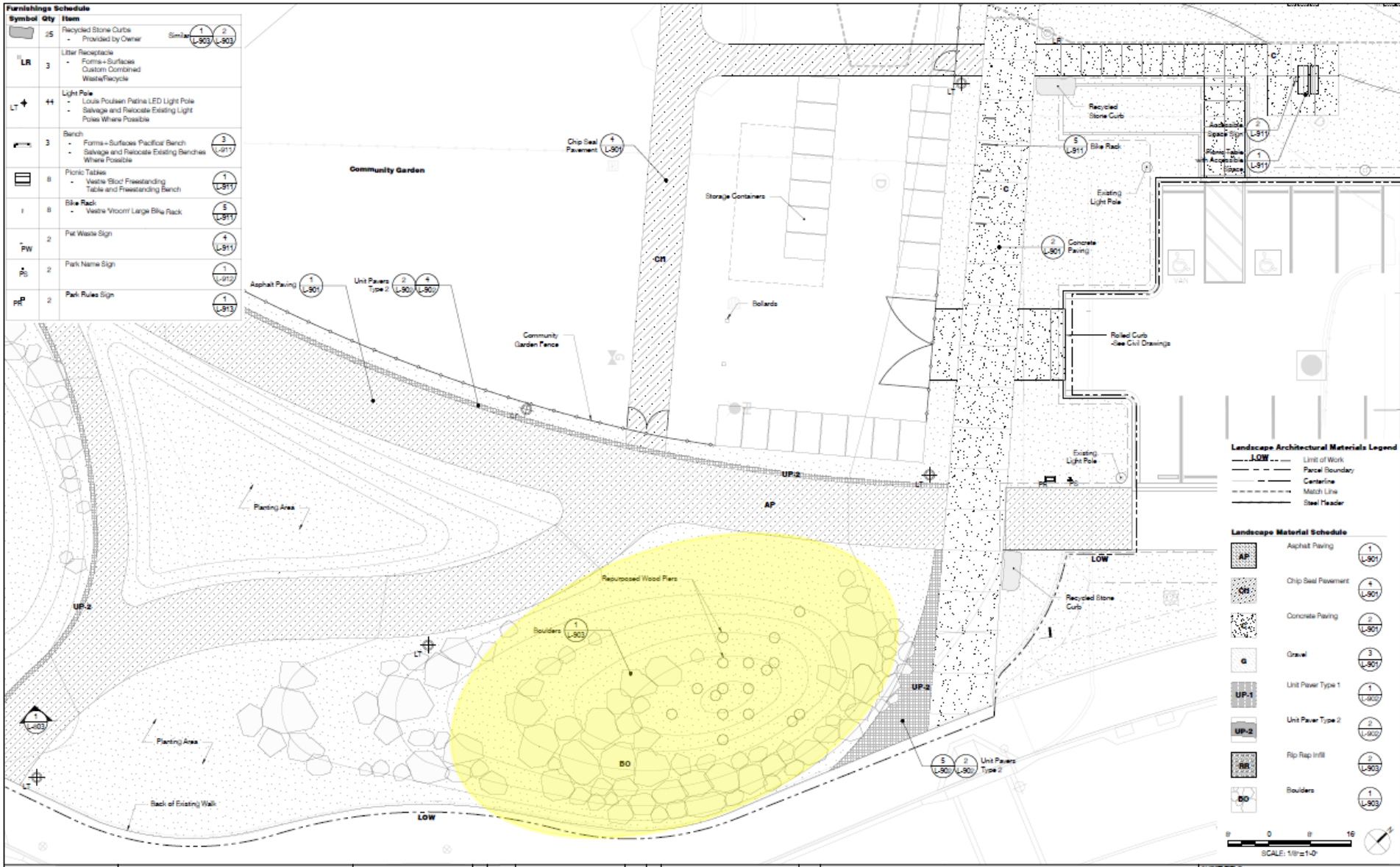
- Public Facility
- Parks
- Residential / Market Rate
- Residential / Affordable
- Hotel
- Commercial
- UCSF
- UCSF Commercial
- Artwork Location



Mission Creek Park Artwork Location



Symbol	Qty	Item	Notes
RS	25	Recycled Stone Curbs	Provided by Owner
LR	3	Liter Recreotack	Forms + Surface Custom Combined Waste/Recycle
LT	44	Light Pole	Louis Poulsen Patina LED Light Pole Salvage and Relocate Existing Light Poles Where Possible
B	3	Bench	Forms + Surface Pacific Bench Salvage and Relocate Existing Benches Where Possible
FT	8	Picnic Tables	Waste Wood Freestanding Table and Freestanding Bench
BR	8	Bike Rack	Waste Wood Large Bike Rack
FW	2	Fit Waste Sign	
PS	2	Park Name Sign	
PR	2	Park Rules Sign	



Landscape Architectural Materials Legend

---LOW---	Limit of Work
---	Parcel Boundary
---	Centerline
---	Match Line
---	Steel Header

Landscape Material Schedule

AP	Asphalt Paving	1	L-901
CH	Chip Seal Pavement	4	L-901
CP	Concrete Paving	2	L-901
G	Gravel	3	L-901
UP-1	Unit Paver Type 1	1	L-902
UP-2	Unit Paver Type 2	2	L-902
RR	Rip Rip Infill	2	L-903
BO	Boulders	1	L-903

SCALE: 1/8"=1'-0"



Mission Creek Park Extension Public Art Project

- Focal sculpture, or series of smaller sculptures, located at the entrance of Mission Creek Park where Channel Street meets Mission Bay Drive.
- Artwork may consist of durable, natural materials that are appropriate for exterior use, including metal, stone, glass, and/or wood.
- Artwork may be illuminated at night.

Project Goals

- Artwork should be inspired by and responsive to the site, including its natural and physical landscape, history, and use.
- Artwork should have a visual impact from a distance, yet be integrated into the landscape and appropriate to the scale of the site.

Budget

- **Art Enrichment Funding: \$1,123,000**
 - Administration (20%)
 - Conservation (10%)
 - Artwork (70%)
- **Total Art Implementation Budget: \$685,000**
 - **Estimated Artist Contract Budget: \$535,000**, inclusive of all artist's fees, as well as associated expenses for artwork design, engineering, fabrication, insurance, and transportation.
 - **Estimated Site Work and Installation Allocation: \$150,000**, performed under separate contract with the City, and inclusive of artwork foundation, lighting, installation, and other associated site expenses.

Artist Selection Timeline

- **Request for Qualifications:** June 21 – August 6
- **Artist Qualification Panel:** Week of August 9
- **Artist Review Panel One:** Week of August 16
- **Artist Finalist Orientation:** Week of August 23
- **Display of Finalist Proposals:** October 11 - 25
- **Artist Review Panel Two:** Week of November 1
- **Visual Arts Committee Approval:** November 17
- **Arts Commission Approval:** December 6