

1 FIRE AND LIFE SAFETY PLAN
3/32" = 1'-0"

OCCUPANCY GROUP LEGEND

- B
- S-1

LEGEND

- FE FIRE EXTINGUISHER
- EGRESS PATH OF TRAVEL



| OCCUPANCY LOAD ANALYSIS | | | | |
|----------------------------|---|-----------------------|--------|-------------------------|
| NAME | FUNCTION OF SPACE | OCCUPANCY LOAD FACTOR | AREA | OCCUPANCY LOAD OF SPACE |
| B | | | | |
| FIRST FLOOR | | | | |
| BREAK RM1 | ASSEMBLY - UNCONCENTRATED (CHAIRS AND TABLES) | 15 SF | 244 SF | 16 |
| BREAK RM2 | ASSEMBLY - UNCONCENTRATED (CHAIRS AND TABLES) | 15 SF | 230 SF | 16 |
| BREAK RM3 | ASSEMBLY - UNCONCENTRATED (CHAIRS AND TABLES) | 15 SF | 231 SF | 16 |
| COMM. | ACCESSORY SPACE TO MAIN USE | 0 SF | 99 SF | 0 |
| CONFERENCE ROOM | ASSEMBLY - UNCONCENTRATED (CHAIRS AND TABLES) | 15 SF | 287 SF | 19 |
| CORRIDOR 1 | ACCESSORY SPACE TO MAIN USE | 0 SF | 265 SF | 0 |
| ELEC. ROOM | ACCESSORY SPACE TO MAIN USE | 0 SF | 277 SF | 0 |
| EMERGENCY SUPPLIES | ACCESSORY STORAGE AREAS, MECH. EQUIP. ROOM | 300 SF | 98 SF | 1 |
| JAN | ACCESSORY SPACE TO MAIN USE | 0 SF | 41 SF | 0 |
| LANDSCAPE EQUIPMENT OFFICE | BUSINESS AREAS | 100 SF | 232 SF | 2 |
| LOCKER ROOM | LOCKER ROOMS (REMOVED FOR 2013) | 50 SF | 439 SF | 9 |
| MECHANICAL | ACCESSORY SPACE TO MAIN USE | 0 SF | 180 SF | 0 |
| MECHANICAL 2 | ACCESSORY SPACE TO MAIN USE | 0 SF | 103 SF | 0 |
| MENS RESTROOM | ACCESSORY SPACE TO MAIN USE | 0 SF | 396 SF | 0 |

| OCCUPANCY LOAD ANALYSIS | | | | |
|------------------------------|--|-----------------------|---------|-------------------------|
| NAME | FUNCTION OF SPACE | OCCUPANCY LOAD FACTOR | AREA | OCCUPANCY LOAD OF SPACE |
| OFFICE 1 | BUSINESS AREAS | 100 SF | 130 SF | 1 |
| OFFICE 2 | BUSINESS AREAS | 100 SF | 130 SF | 1 |
| OFFICE 3 | BUSINESS AREAS | 100 SF | 126 SF | 1 |
| OPEN OFFICE | BUSINESS AREAS | 100 SF | 1992 SF | 20 |
| PLUMBING OFFICE | BUSINESS AREAS | 100 SF | 250 SF | 3 |
| RECEPTION | BUSINESS AREAS | 100 SF | 315 SF | 3 |
| SOLDER AND COPY ROOM | BUSINESS AREAS | 100 SF | 133 SF | 2 |
| STORAGE | ACCESSORY STORAGE AREAS, MECH. EQUIP. ROOM | 300 SF | 104 SF | 1 |
| UNISEX RESTROOM | ACCESSORY SPACE TO MAIN USE | 0 SF | 71 SF | 0 |
| VEGETATION MANAGEMENT OFFICE | BUSINESS AREAS | 100 SF | 237 SF | 3 |
| WOMENS RESTROOM | ACCESSORY SPACE TO MAIN USE | 0 SF | 390 SF | 0 |
| | | | 6998 SF | 114 |

| S-1 | | | | |
|----------------------------|--|-----------------------|---------|-------------------------|
| NAME | FUNCTION OF SPACE | OCCUPANCY LOAD FACTOR | AREA | OCCUPANCY LOAD OF SPACE |
| FIRST FLOOR | | | | |
| LANDSCAPE EQUIPMENT SHOP | ACCESSORY STORAGE AREAS, MECH. EQUIP. ROOM | 300 SF | 553 SF | 2 |
| PLUMBING SHOP | ACCESSORY STORAGE AREAS, MECH. EQUIP. ROOM | 300 SF | 1106 SF | 4 |
| VEGETATION MANAGEMENT SHOP | ACCESSORY STORAGE AREAS, MECH. EQUIP. ROOM | 300 SF | 1106 SF | 4 |
| | | | 2765 SF | 10 |
| BUILDING TOTAL | | | 9763 SF | 124 |

FOR THE SOLE USE OF THE DOCUMENT RECIPIENT - DO NOT CITE, COPY, OR CIRCULATE WITHOUT THE EXPRESSED PERMISSION OF THE SFPUC.

ELEVATION DATUM

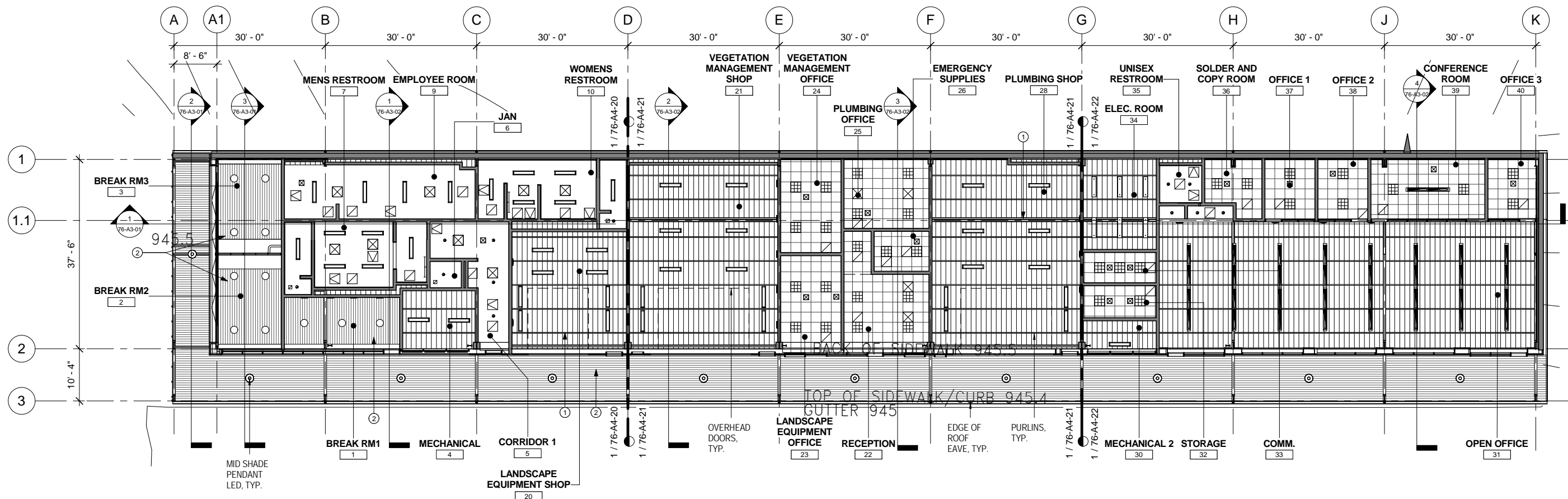


95% CD SUBMITTAL

| | | | |
|--|-------------|--|------------------------------|
| CITY AND COUNTY OF SAN FRANCISCO DEPARTMENT OF PUBLIC WORKS BUILDING DESIGN AND CONSTRUCTION Edgar Lopez - City Architect Julia Laue - Principal Architect / Division Manager Mark Dorlan - Architecture Services Manager | | | |
| SECTION MANAGER | DRAWN | Author | CHECKED / APPROVED |
| DIVISION MANAGER | DESIGNED | Designer | SECTION MANAGER |
| CITY ENGINEER | CHECKED | Checker | SCALE AS SHOWN DATE 10/08/15 |
| APPROVED | | APPROVED | |
| MANAGER, ENGINEERING MANAGEMENT BUREAU | | DIVISION MANAGER, HETCH HETCHY WATER AND POWER | |
| PLAN NO. | DESCRIPTION | BY | APPR'D |
| REVISIONS | | | |

| | |
|---|--|
| CONTRACT NO. HH-982 | |
| CITY AND COUNTY OF SAN FRANCISCO PUBLIC UTILITIES COMMISSION INFRASTRUCTURE DIVISION ENGINEERING MANAGEMENT BUREAU | |
| MOCCASIN SHOPS / OFFICE BUILDING AND MATERIALS BINS | |
| BUILDING #76 - SHOP/OFFICE BUILDING FIRE & LIFE SAFETY PLAN | |
| APPROVED | APPROVED |
| MANAGER, ENGINEERING MANAGEMENT BUREAU | DIVISION MANAGER, HETCH HETCHY WATER AND POWER |
| PLAN NO. 76-A0-05 | DRAWING/FILE NO. REVISION NO. |





1 REFLECTIVE CEILING PLAN
3/32" = 1'-0"

LEGEND

- GYP. BD. CEILING AT 9'-6" ABOVE FINISH FLOOR U.N.O
- EXPOSED CEILING, SEE BUILDING SECTIONS
- 2' x 2' SUSPENDED ACOUSTICAL CEILING TILE
- WOOD SLAT SLOPE CEILING SYSTEM, SEE BUILDING SECTION

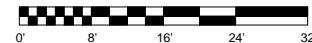
RCP LIGHTS LEGEND

- C1 - Mark Whisper 2x2 Recessed LED
- D1 - Gotham LED Downlight
- L1 - Survivor 9 Surface Mount
- P1 - Peerless Burno D/I LED Pendant
- P2a - Lighting Pendant Mount Delray Lighting Industrial LED
- S1a - Lithonia Lighting LED Strip
- S1b - Lithonia Lighting Proteon LED
- W1 - Snap-Wall
- Duomo medium shade pendant
- Return Diffuser
- Supply Diffuser
- Ceiling Access Panel

○ KEY NOTES - A1-08

- 1 PURLINS AND GIRTS ARE SPACING ARE SHOWN APPROXIMATE. COORDINATE WITH DESIGN BUILDER.
- 2 CEILING VARIES. SUSPENDED CEILING HEIGHT IS 9'-6" UNLESS OTHERWISE NOTED.

GRAPHIC SCALE: 3/32" = 1'-0"



CONTRACT NO. HH-982

CITY AND COUNTY OF SAN FRANCISCO
PUBLIC UTILITIES COMMISSION
INFRASTRUCTURE DIVISION
ENGINEERING MANAGEMENT BUREAU
MOCCASIN SHOPS / OFFICE BUILDING
AND MATERIALS BINS
BUILDING #76 - SHOP/OFFICE BUILDING
REFLECTED CEILING PLANS

95% CD SUBMITTAL

CITY AND COUNTY OF SAN FRANCISCO
DEPARTMENT OF PUBLIC WORKS
BUILDING DESIGN AND CONSTRUCTION
Edgar Lopez - City Architect
Julia Laue - Principal Architect / Division Manager
Mark Dorlan - Architecture Services Manager

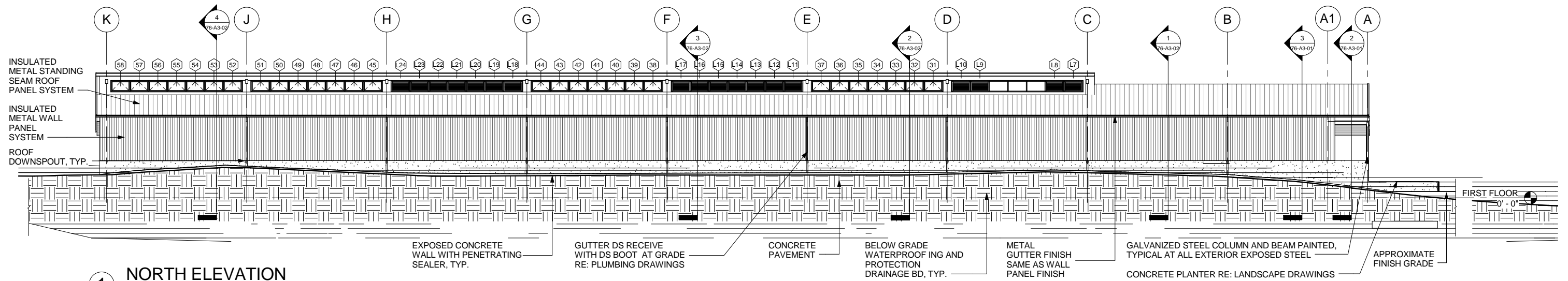
| | | | | |
|------------------|----------|-------------|----|----------|
| SECTION MANAGER | DRAWN | Author | | |
| DIVISION MANAGER | DESIGNED | Designer | | |
| CITY ENGINEER | CHECKED | Checker | | |
| NO. | DATE | DESCRIPTION | BY | APPROV'D |
| REVISIONS | | | | |



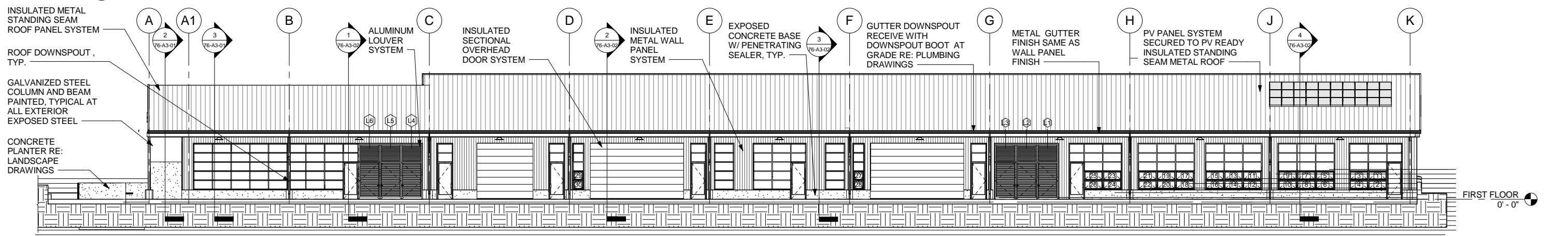
FOR THE SOLE USE OF THE DOCUMENT RECIPIENT - DO NOT CITE, COPY, OR CIRCULATE WITHOUT THE EXPRESSED PERMISSION OF THE SFPUC.

ELEVATION DATUM

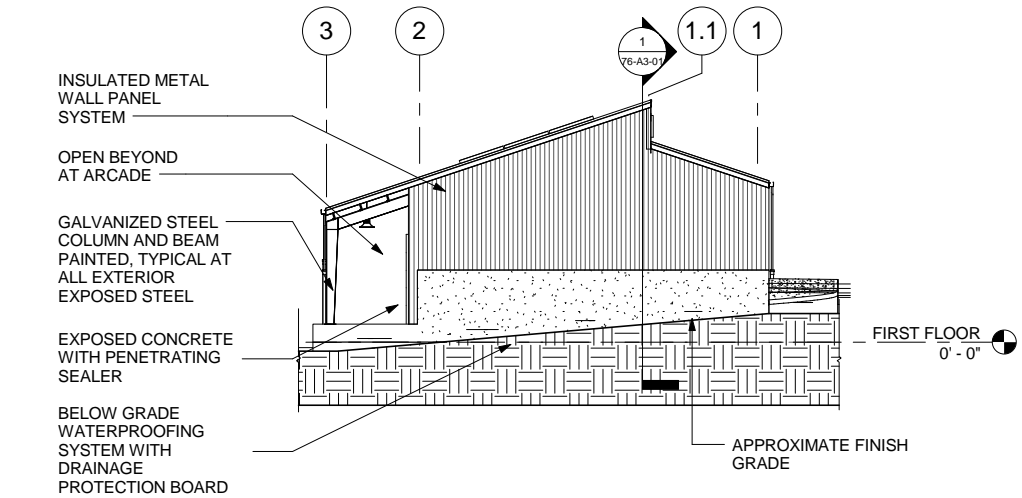
| | |
|--|--|
| CHECKED / APPROVED | DRAWN |
| SECTION MANAGER | DESIGNED |
| SCALE | DATE |
| AS SHOWN | 10/08/15 |
| APPROVED | APPROVED |
| MANAGER, ENGINEERING MANAGEMENT BUREAU | DIVISION MANAGER, HETCH HETCHY WATER AND POWER |
| PLAN NO. | DRAWING/FILE NO. |
| 76-A1-08 | |
| REVISION NO. | |



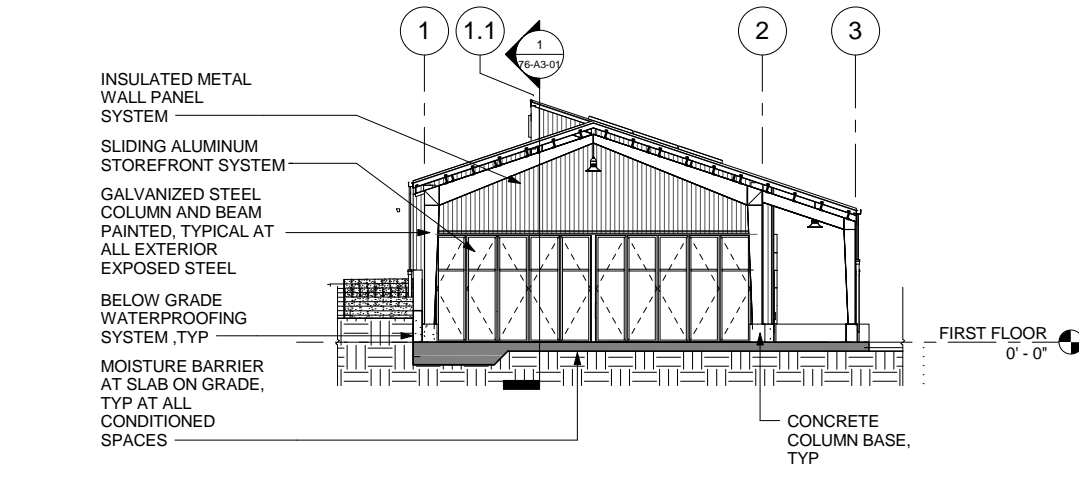
1 NORTH ELEVATION
3/32" = 1'-0"



2 SOUTH ELEVATION
3/32" = 1'-0"



3 EAST ELEVATION
3/32" = 1'-0"



4 WEST ELEVATION
3/32" = 1'-0"



CONTRACT NO. HH-982

CITY AND COUNTY OF SAN FRANCISCO
PUBLIC UTILITIES COMMISSION
INFRASTRUCTURE DIVISION
ENGINEERING MANAGEMENT BUREAU
MOCCASIN SHOPS / OFFICE BUILDING
AND MATERIALS BINS
BUILDING #76 - SHOP/OFFICE BUILDING
EXTERIOR ELEVATIONS

95% CD SUBMITTAL

CITY AND COUNTY OF SAN FRANCISCO
DEPARTMENT OF PUBLIC WORKS
BUILDING DESIGN AND CONSTRUCTION
Edgar Lopez - City Architect
Julia Laue - Principal Architect / Division Manager
Mark Dorlan - Architecture Services Manager

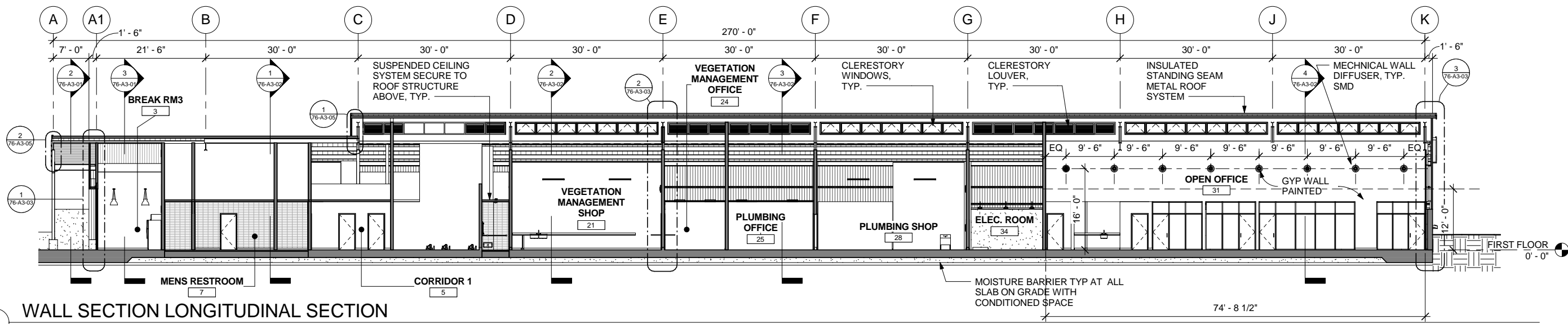
| | | |
|------------------|----------|-------------|
| SECTION MANAGER | DRAWN | Author |
| DIVISION MANAGER | DESIGNED | Designer |
| CITY ENGINEER | CHECKED | Checker |
| NO. | DATE | DESCRIPTION |
| REVISIONS | | |

| | |
|--|--|
| CHECKED / APPROVED | DRAWN |
| SECTION MANAGER | DESIGNED |
| APPROVED | APPROVED |
| MANAGER, ENGINEERING MANAGEMENT BUREAU | DIVISION MANAGER, HETCH HETCHY WATER AND POWER |
| 76-A2-01 | REVISION NO. |

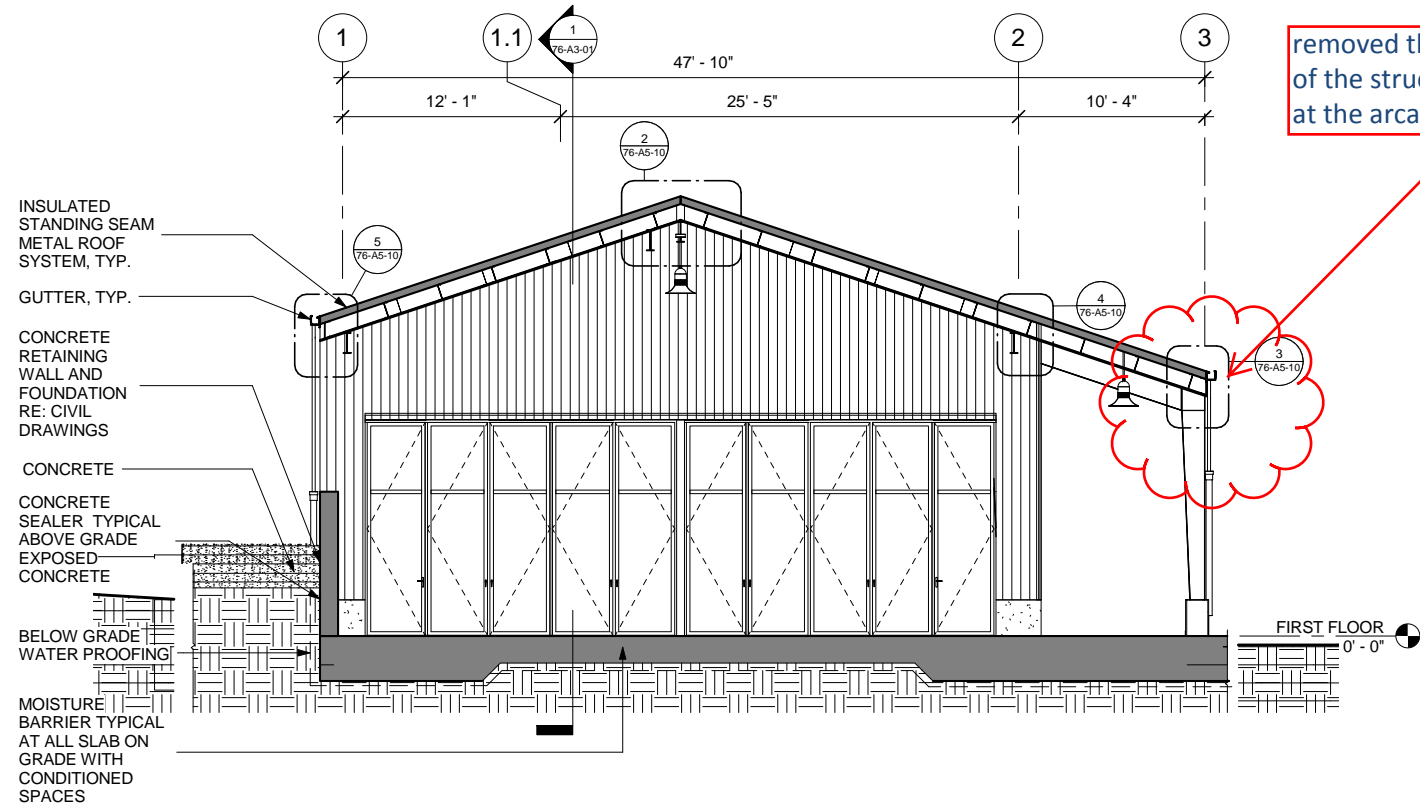


FOR THE SOLE USE OF THE DOCUMENT
RECIPIENT - DO NOT CITE, COPY, OR
CIRCULATE WITHOUT THE EXPRESSED
PERMISSION OF THE SFPUC.

ELEVATION
DATUM

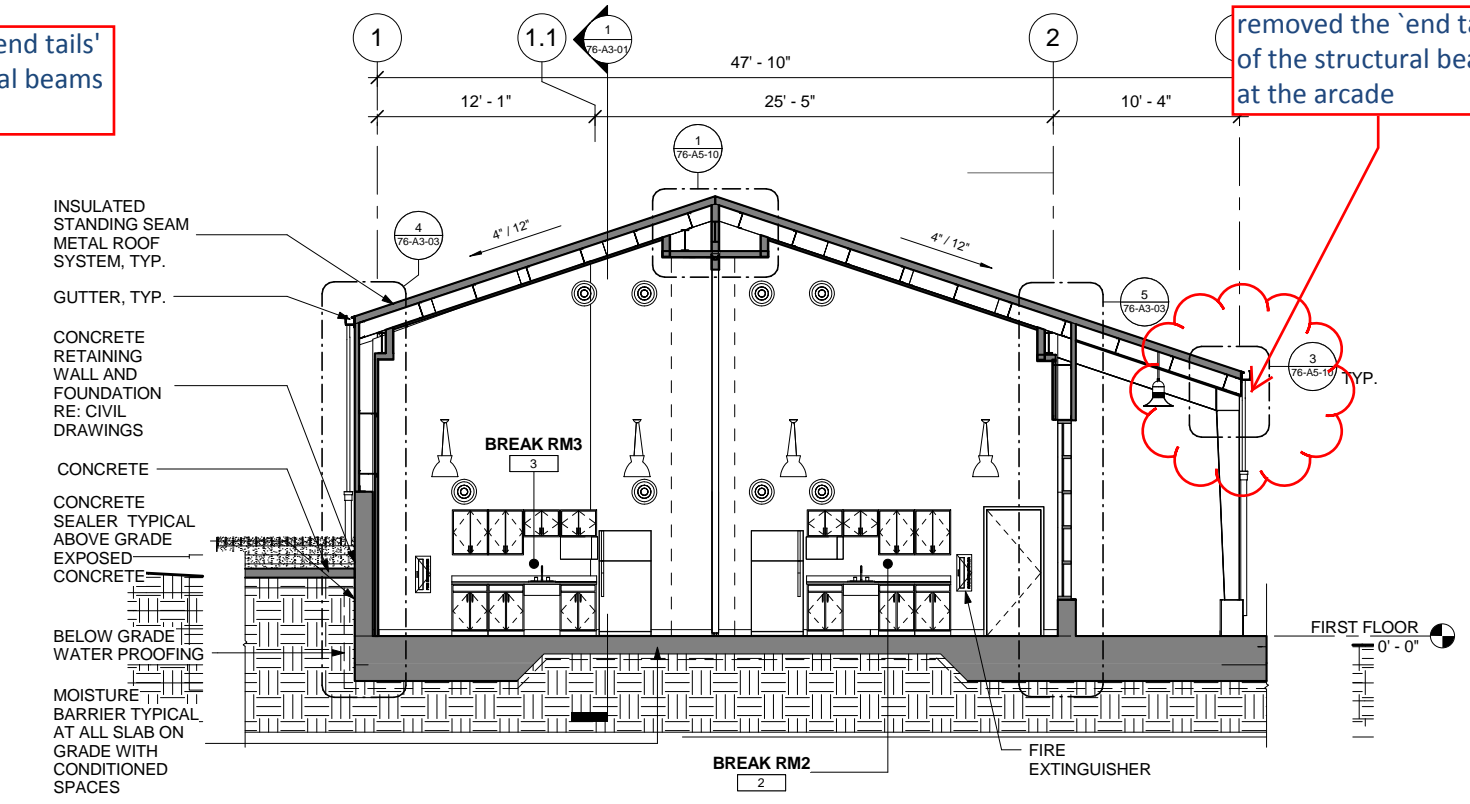


1 WALL SECTION LONGITUDINAL SECTION
3/32" = 1'-0"



2 PLAZA SECTION
3/16" = 1'-0"

removed the 'end tails' of the structural beams at the arcade



3 BREAK ROOM 2 AND BREAK ROOM 3
3/16" = 1'-0"

removed the 'end tails' of the structural beams at the arcade

FOR THE SOLE USE OF THE DOCUMENT RECIPIENT - DO NOT CITE, COPY, OR CIRCULATE WITHOUT THE EXPRESSED PERMISSION OF THE SFPUC.

ELEVATION DATUM



95% CD SUBMITTAL

CITY AND COUNTY OF SAN FRANCISCO
DEPARTMENT OF PUBLIC WORKS
BUILDING DESIGN AND CONSTRUCTION
Edgar Lopez - City Architect
Julia Laue - Principal Architect / Division Manager
Mark Dorlan - Architecture Services Manager

| | | |
|------------------|----------|-------------|
| SECTION MANAGER | DRAWN | Author |
| DIVISION MANAGER | DESIGNED | Designer |
| CITY ENGINEER | CHECKED | Checker |
| NO. | DATE | DESCRIPTION |
| REVISIONS | | |

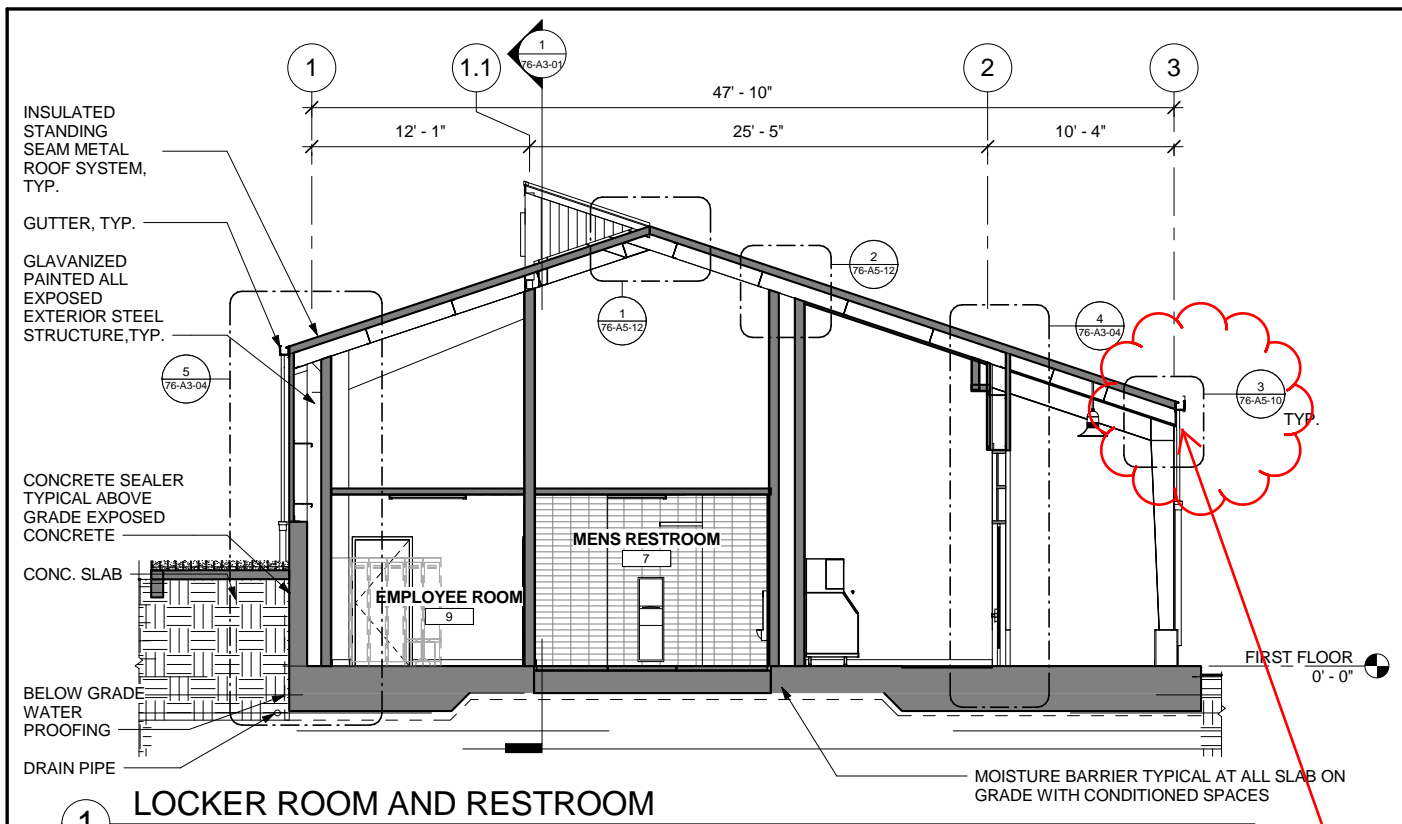
CONTRACT NO. HH-982

CITY AND COUNTY OF SAN FRANCISCO
PUBLIC UTILITIES COMMISSION
INFRASTRUCTURE DIVISION
ENGINEERING MANAGEMENT BUREAU

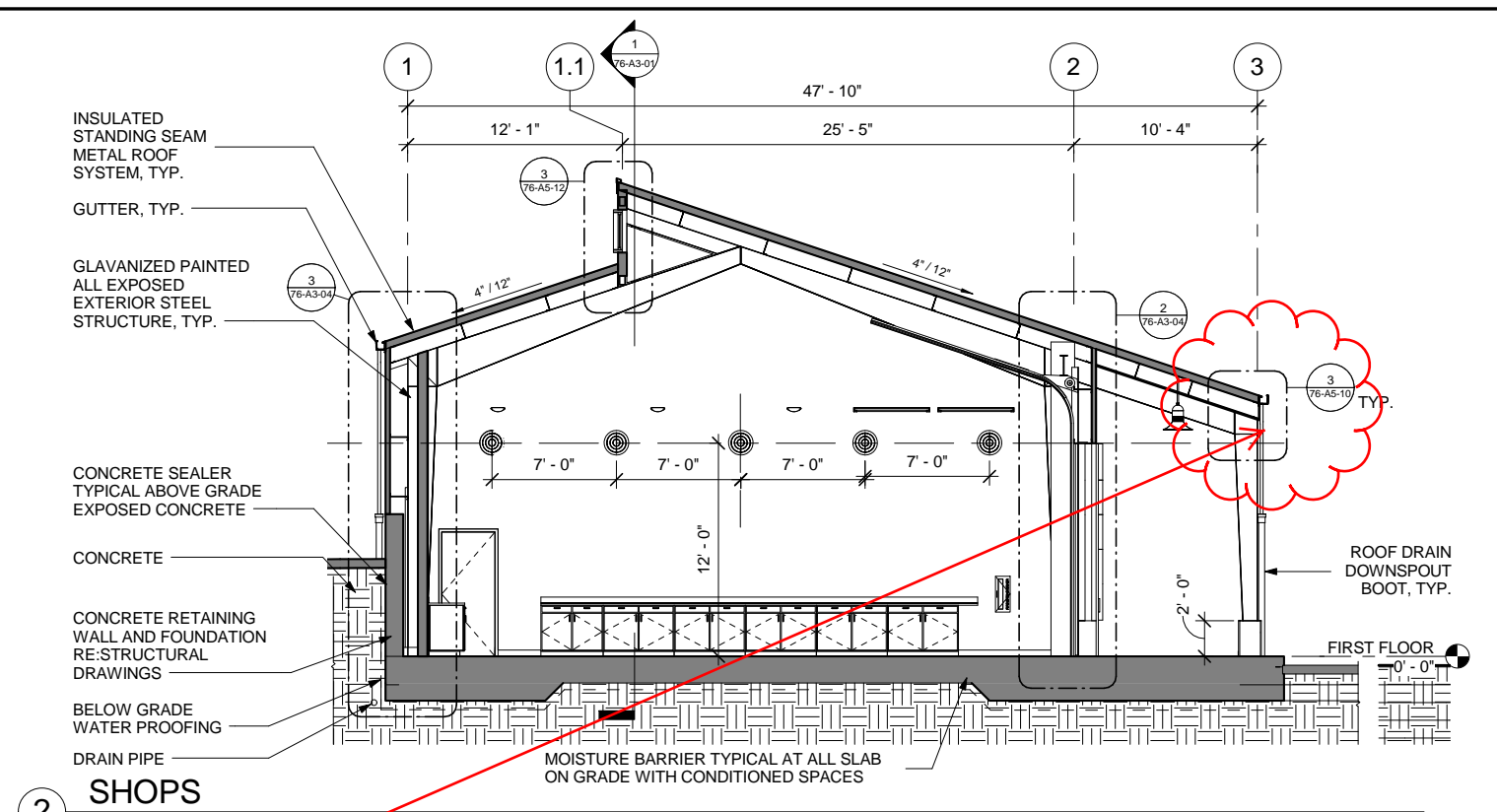
MOCCASIN SHOPS / OFFICE BUILDING
AND MATERIALS BINS

BUILDING #76 - SHOP/OFFICE BUILDING
BUILDING SECTIONS

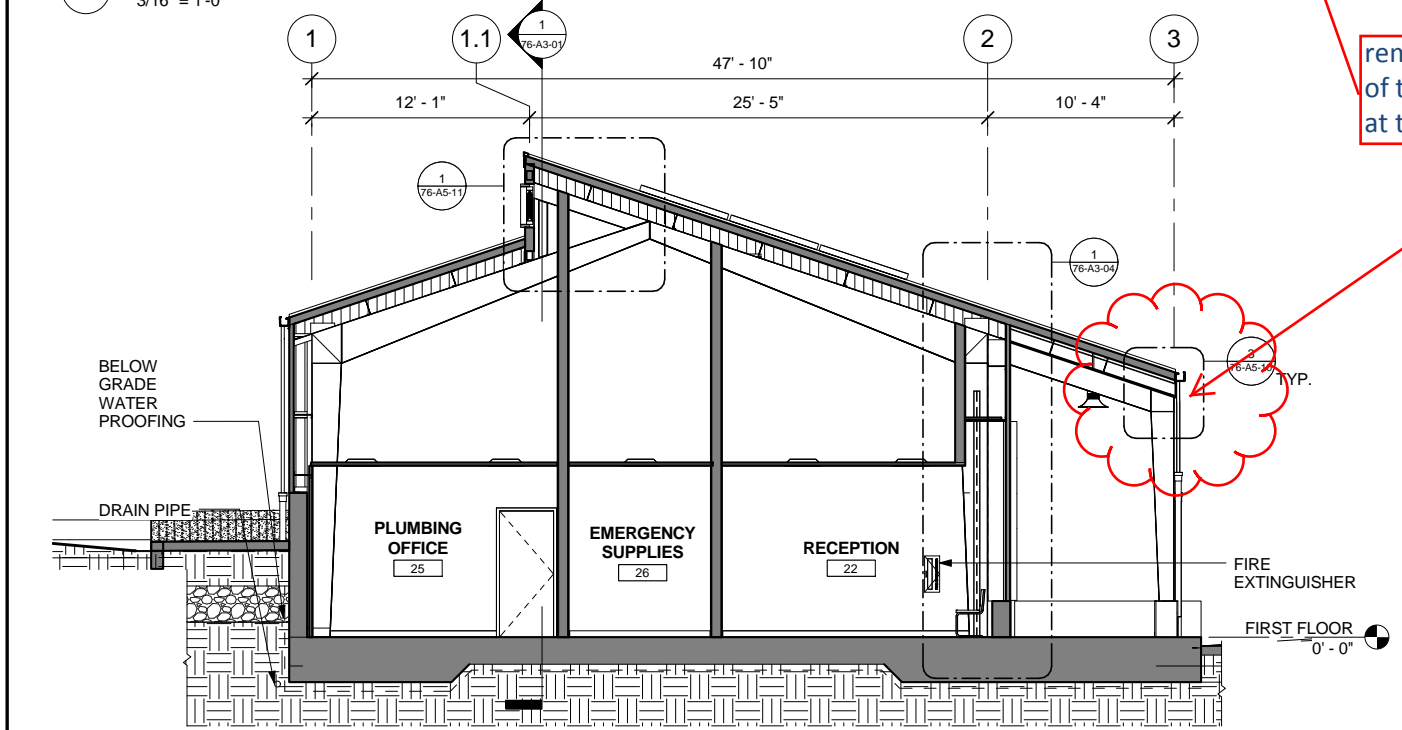
| | |
|--|--|
| CHECKED / APPROVED | DRAWN |
| SECTION MANAGER | DESIGNED |
| SCALE | DATE |
| AS SHOWN | 10/08/15 |
| APPROVED | APPROVED |
| MANAGER, ENGINEERING MANAGEMENT BUREAU | DIVISION MANAGER, HETCH HETCHY WATER AND POWER |
| 76-A3-01 | |



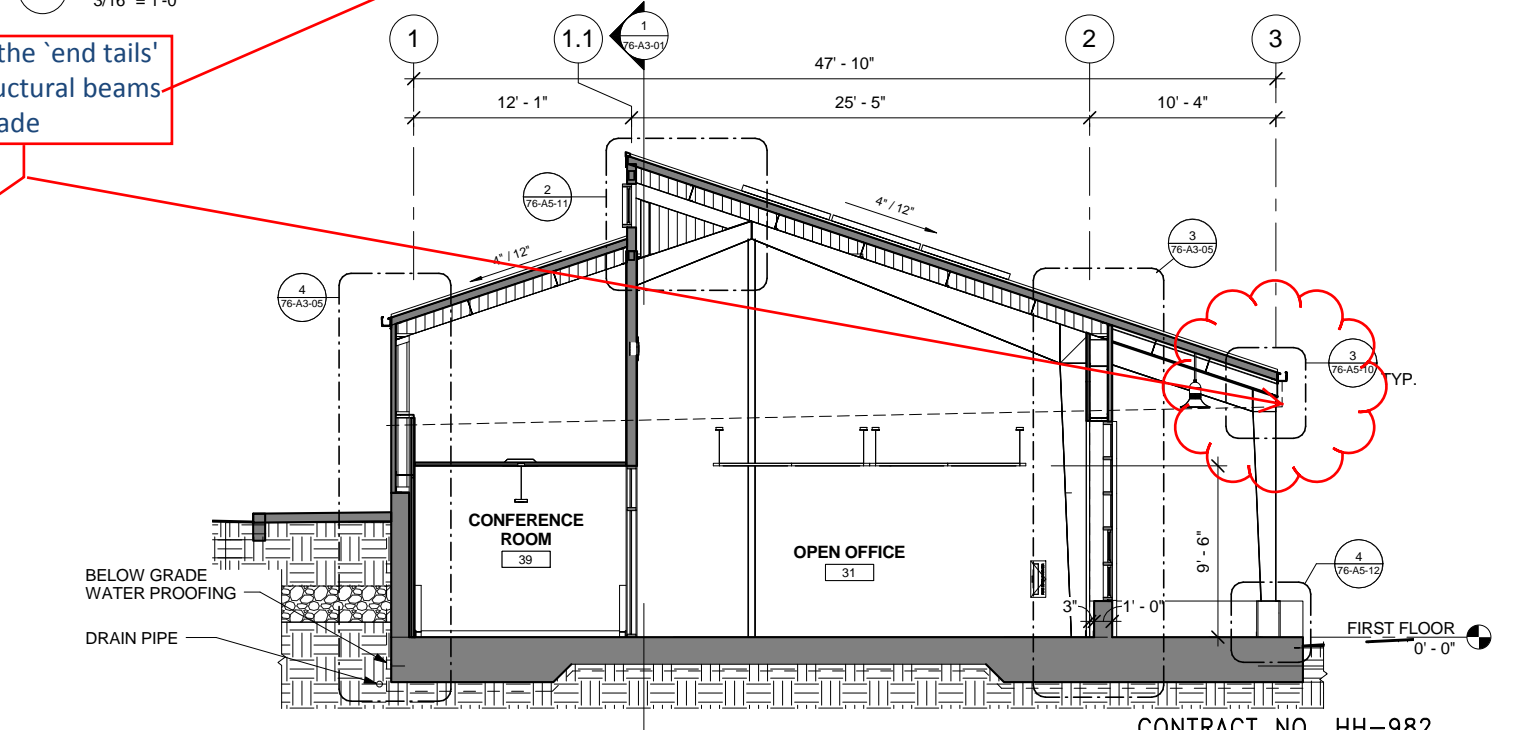
1 LOCKER ROOM AND RESTROOM
3/16" = 1'-0"



2 SHOPS
3/16" = 1'-0"



3 SHOP OFFICES
3/16" = 1'-0"



4 CONFERENCE ROOM AND OPEN OFFICE SUITE
3/16" = 1'-0"

removed the 'end tails' of the structural beams at the arcade

CONTRACT NO. HH-982

CITY AND COUNTY OF SAN FRANCISCO
PUBLIC UTILITIES COMMISSION
INFRASTRUCTURE DIVISION
ENGINEERING MANAGEMENT BUREAU
MOCCASIN SHOPS / OFFICE BUILDING
AND MATERIALS BINS
BUILDING #76 - SHOP/OFFICE BUILDING
BUILDING SECTIONS

95% CD SUBMITTAL

CITY AND COUNTY OF SAN FRANCISCO
DEPARTMENT OF PUBLIC WORKS
BUILDING DESIGN AND CONSTRUCTION
Edgar Lopez - City Architect
Julia Laue - Principal Architect / Division Manager
Mark Dorlan - Architecture Services Manager

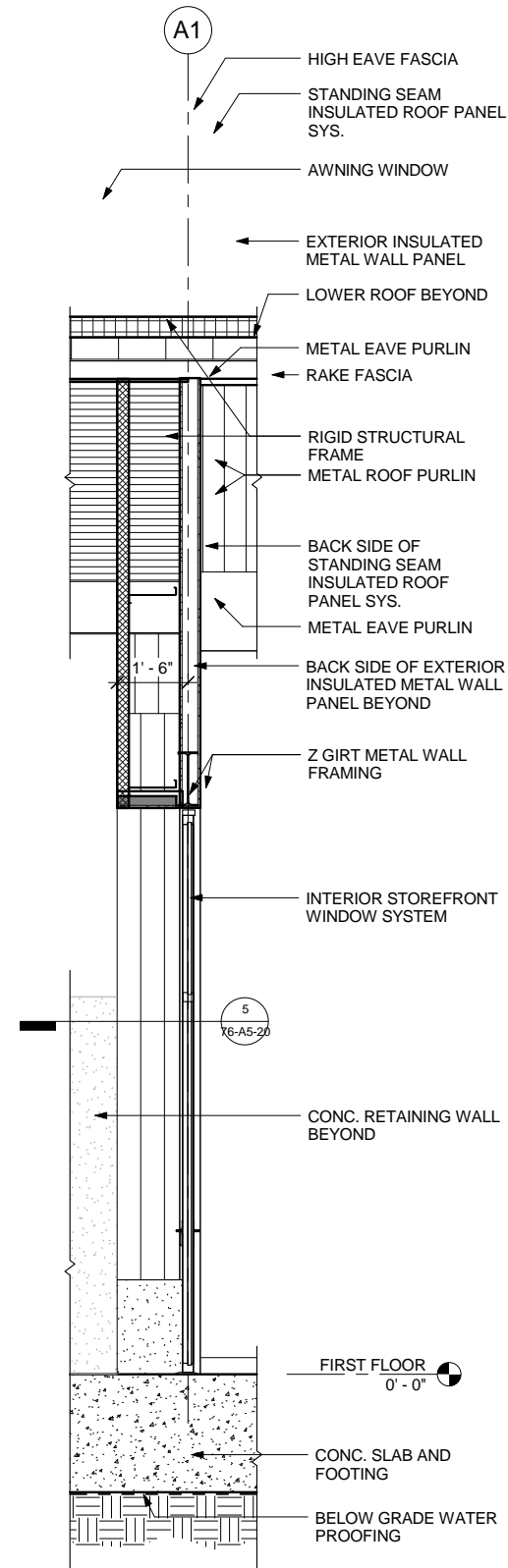


| | | | | |
|------------------|----------|-------------|--------------------|------------------------------|
| SECTION MANAGER | DRAWN | Author | CHECKED / APPROVED | DRAWN |
| DIVISION MANAGER | DESIGNED | Designer | SECTION MANAGER | DESIGNED |
| CITY ENGINEER | CHECKED | Checker | | SCALE AS SHOWN DATE 10/08/15 |
| | | | APPROVED | APPROVED |
| NO. | DATE | DESCRIPTION | BY | APPR'D |
| REVISIONS | | | | |

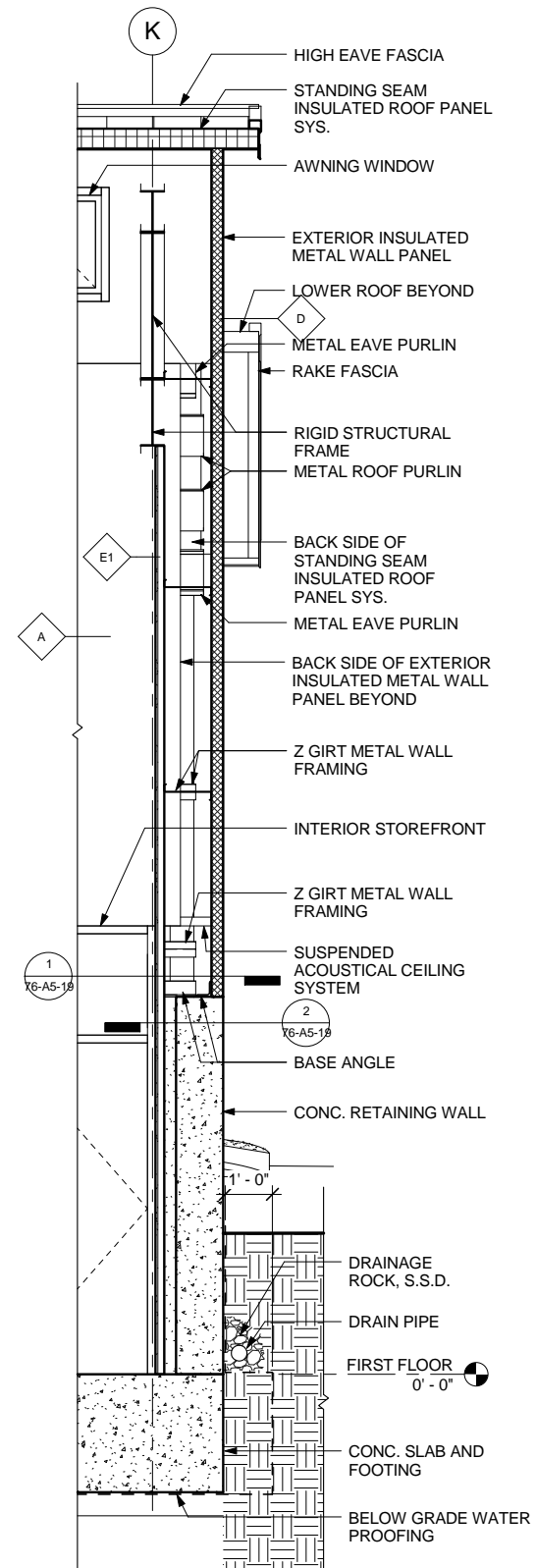
| | |
|--|--|
| MANAGER, ENGINEERING MANAGEMENT BUREAU | DIVISION MANAGER, HETCH HETCHY WATER AND POWER |
| 76-A3-02 | |

FOR THE SOLE USE OF THE DOCUMENT RECIPIENT - DO NOT CITE, COPY, OR CIRCULATE WITHOUT THE EXPRESSED PERMISSION OF THE SFPUC.

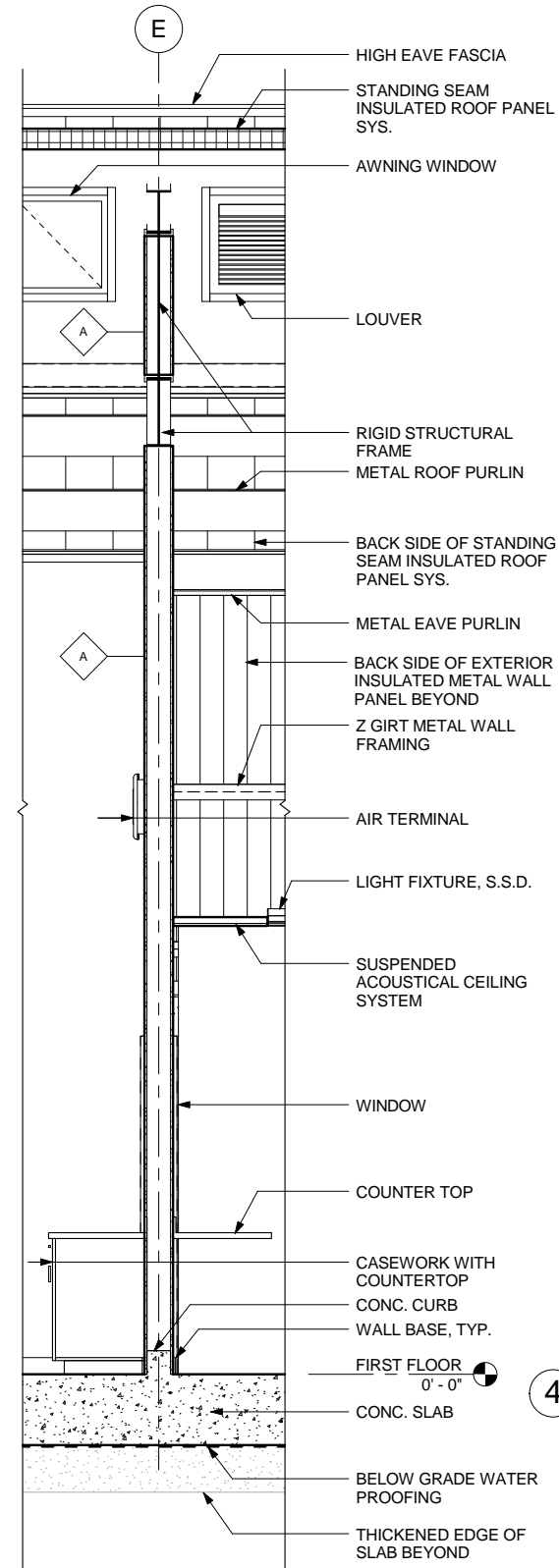
ELEVATION DATUM



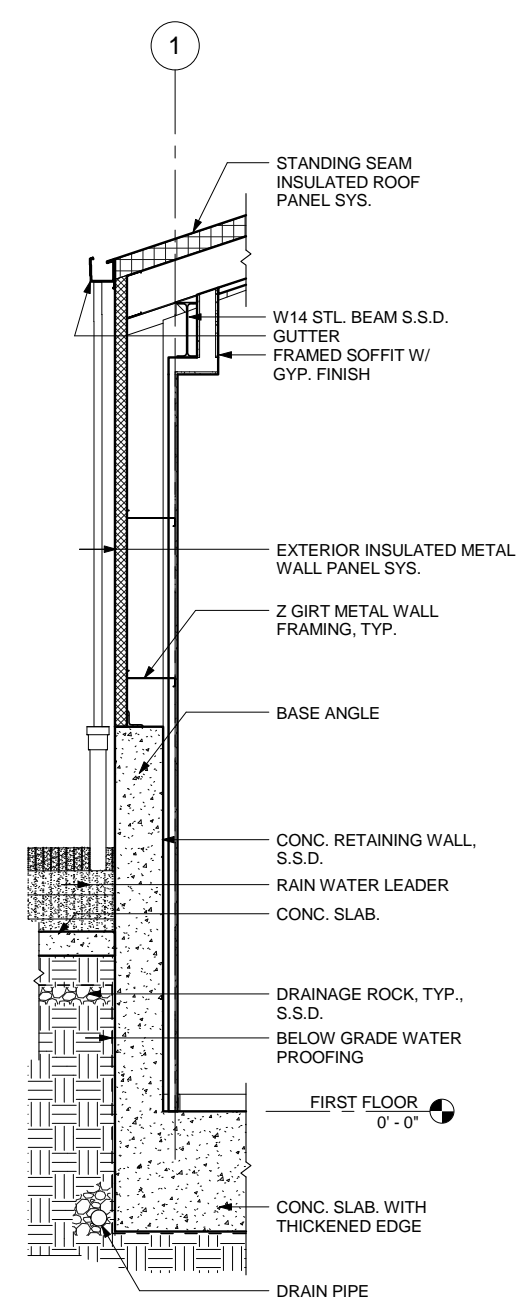
1 WALL SECTION - COL. A1
1/2" = 1'-0"



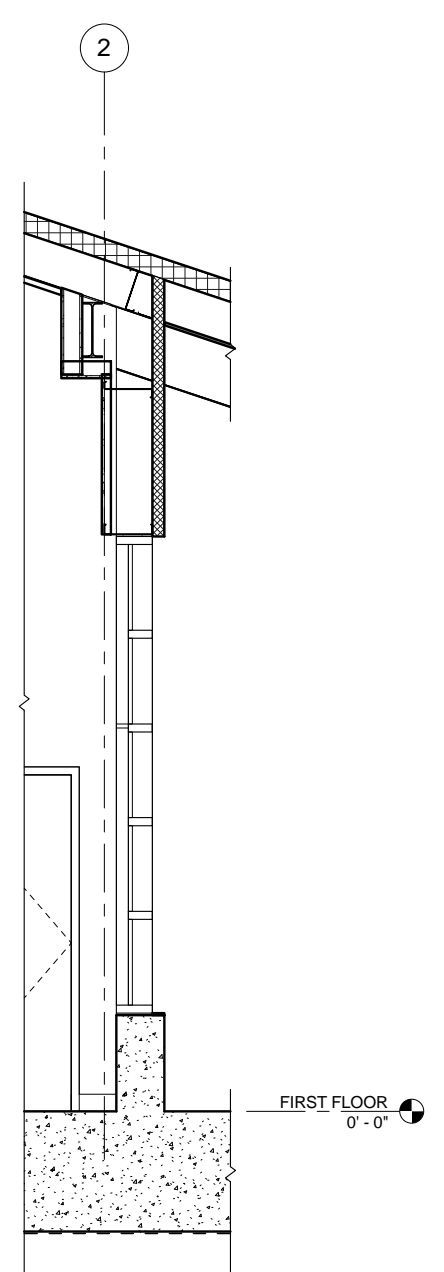
3 WALL SECTION - COL. K
1/2" = 1'-0"



2 WALL SECTION - COL. E
1/2" = 1'-0"



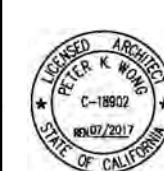
4 WALL SECTION - COL. 1 @ BREAK ROOMS 2 AND 3
1/2" = 1'-0"



5 WALL SECTION - COL. 2 @ BREAK ROOMS 2 AND 3
1/2" = 1'-0"

FOR THE SOLE USE OF THE DOCUMENT RECIPIENT - DO NOT CITE, COPY, OR CIRCULATE WITHOUT THE EXPRESSED PERMISSION OF THE SFPUC.

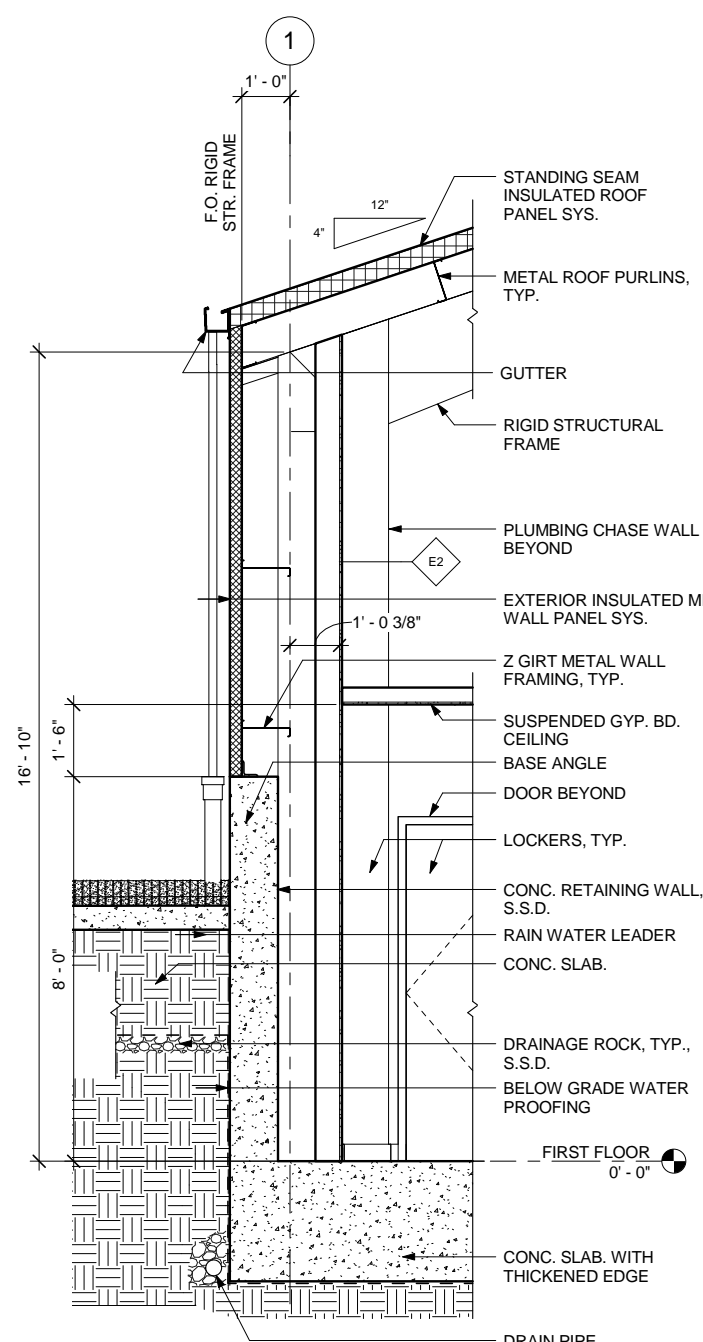
ELEVATION DATUM



95% CD SUBMITTAL

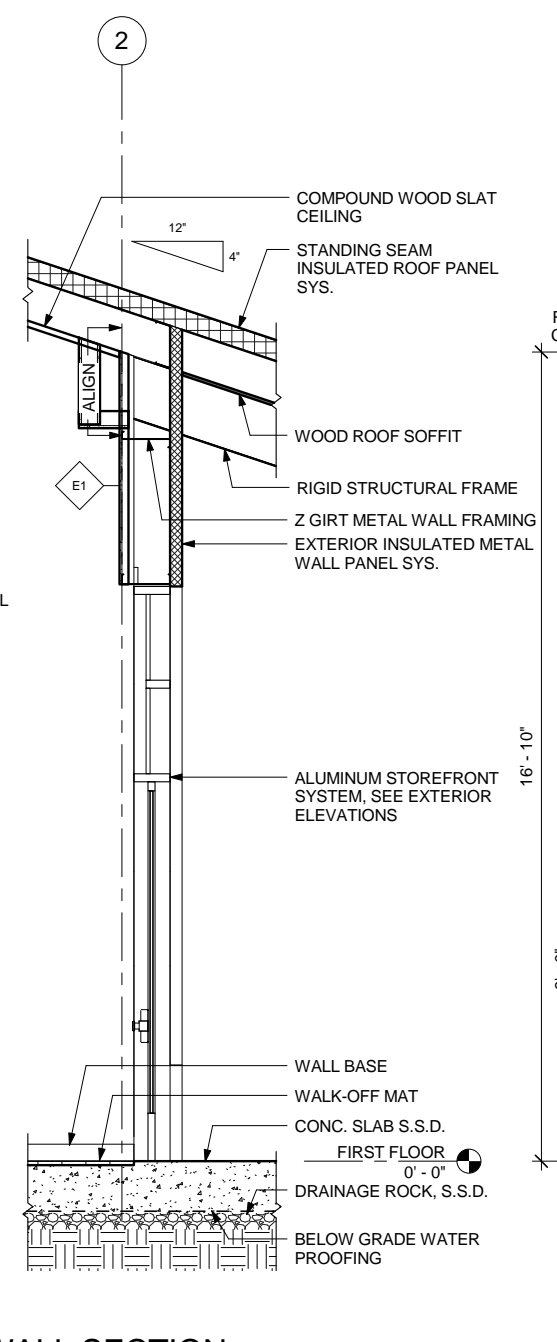
| | | | |
|--|----------|-------------|----|
| CITY AND COUNTY OF SAN FRANCISCO DEPARTMENT OF PUBLIC WORKS BUILDING DESIGN AND CONSTRUCTION | | | |
| Edgar Lopez - City Architect | | | |
| Julia Lau - Principal Architect / Division Manager | | | |
| Mark Dorlan - Architecture Services Manager | | | |
| SECTION MANAGER | DRAWN | Author | |
| DIVISION MANAGER | DESIGNED | Designer | |
| CITY ENGINEER | CHECKED | Checker | |
| NO. | DATE | DESCRIPTION | BY |
| REVISIONS | | | |

| | | | |
|---|--|--------------|--|
| CONTRACT NO. HH-982 | | | |
| CITY AND COUNTY OF SAN FRANCISCO PUBLIC UTILITIES COMMISSION INFRASTRUCTURE DIVISION ENGINEERING MANAGEMENT BUREAU | | | |
| MOCCASIN SHOPS / OFFICE BUILDING AND MATERIALS BINS | | | |
| BUILDING #76 - SHOP/OFFICE BUILDING WALL SECTIONS | | | |
| CHECKED / APPROVED | DRAWN | | |
| SECTION MANAGER | DESIGNED | | |
| | SCALE | DATE | |
| | AS SHOWN | 10/08/15 | |
| APPROVED | APPROVED | | |
| MANAGER, ENGINEERING MANAGEMENT BUREAU | DIVISION MANAGER, HETCH HETCHY WATER AND POWER | | |
| PLAN NO. | DRAWING/FILE NO. | REVISION NO. | |
| 76-A3-03 | | | |



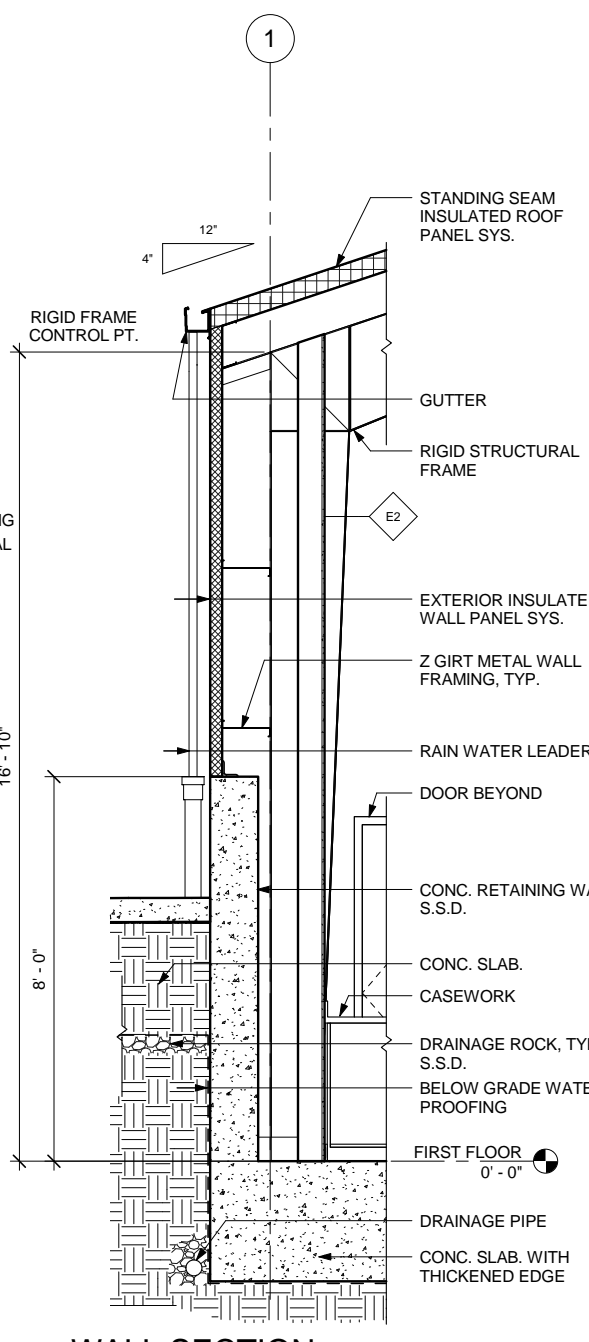
**WALL SECTION -
COL. 1 @ LOCKER
ROOM**

5
1/2" = 1'-0"



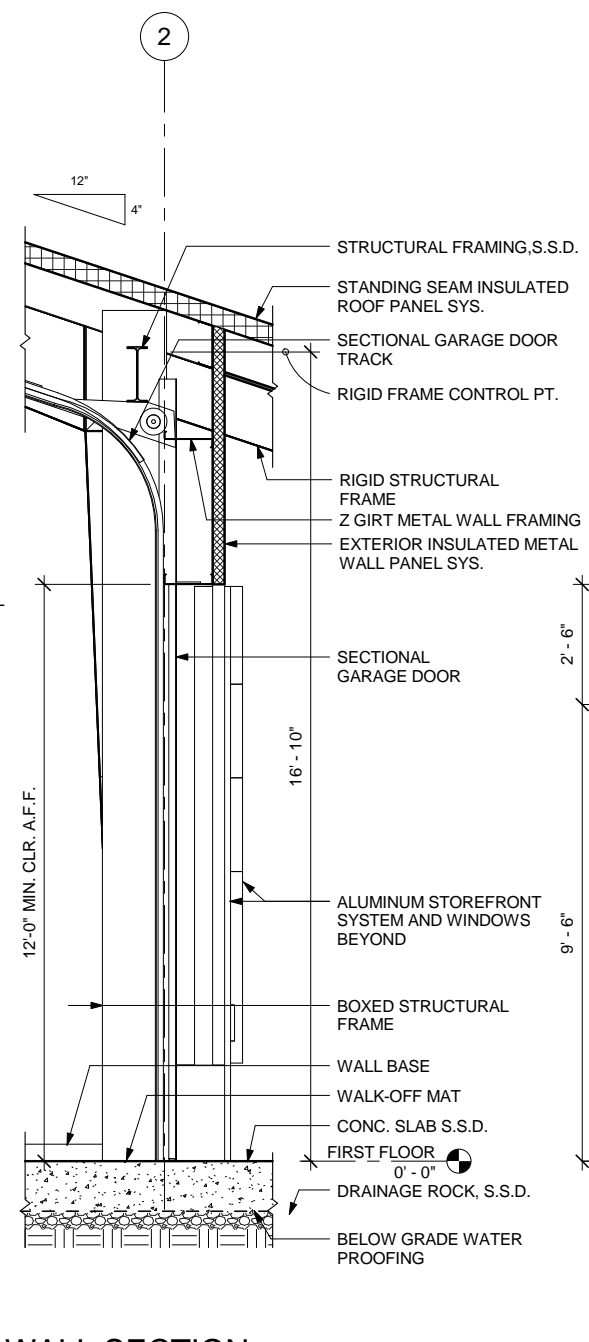
**WALL SECTION -
COL. 2 LOCKER
ROOM AND
RESTROOM**

4
1/2" = 1'-0"



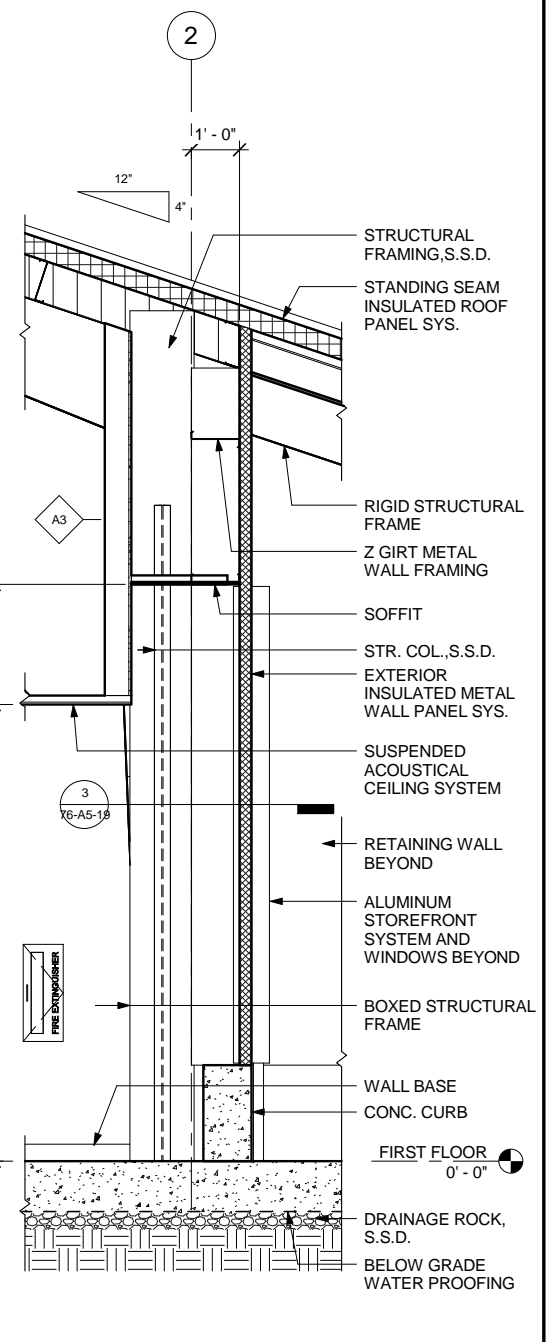
**WALL SECTION -
COL. 1 @
VEGETATION
MANAGEMENT SHOP**

3
1/2" = 1'-0"



**WALL SECTION -
COL. 2 @
VEGETATION
MANAGEMENT SHOP**

2
1/2" = 1'-0"



**WALL SECTION - COL. 2 @
RECEPTION**

1
1/2" = 1'-0"

CONTRACT NO. HH-982

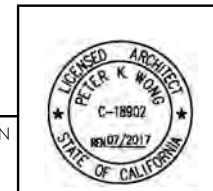
CITY AND COUNTY OF SAN FRANCISCO
PUBLIC UTILITIES COMMISSION
INFRASTRUCTURE DIVISION
ENGINEERING MANAGEMENT BUREAU

MOCCASIN SHOPS / OFFICE BUILDING
AND MATERIALS BINS

BUILDING #76 - SHOP/OFFICE BUILDING
WALL SECTIONS

95% CD SUBMITTAL

CITY AND COUNTY OF SAN FRANCISCO
DEPARTMENT OF PUBLIC WORKS
BUILDING DESIGN AND CONSTRUCTION
Edgar Lopez - City Architect
Julia Laue - Principal Architect / Division Manager
Mark Dorlan - Architecture Services Manager

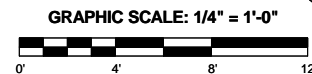
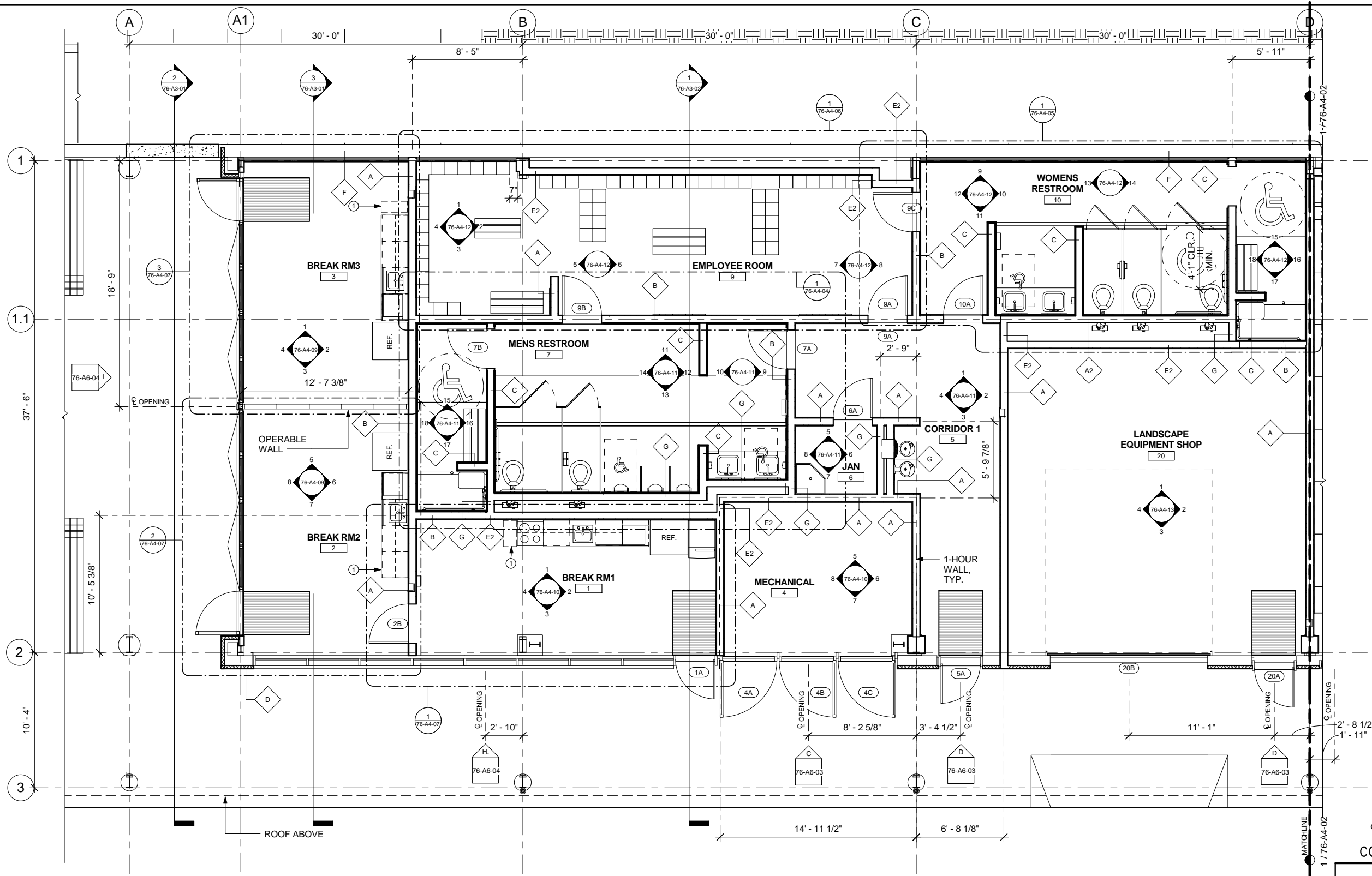


| | | |
|------------------|----------|-------------|
| SECTION MANAGER | DRAWN | Author |
| DIVISION MANAGER | DESIGNED | Designer |
| CITY ENGINEER | CHECKED | Checker |
| NO. | DATE | DESCRIPTION |
| | | BY |
| | | APPROV'D |

| | |
|--|--|
| CHECKED / APPROVED | DRAWN |
| SECTION MANAGER | DESIGNED |
| SCALE | DATE |
| AS SHOWN | 10/08/15 |
| APPROVED | APPROVED |
| MANAGER, ENGINEERING MANAGEMENT BUREAU | DIVISION MANAGER, HETCH HETCHY WATER AND POWER |
| PLAN NO. | DRAWING/FILE NO. |
| 76-A3-04 | |
| REVISIONS | REVISION NO. |

FOR THE SOLE USE OF THE DOCUMENT
RECIPIENT - DO NOT CITE, COPY, OR
CIRCULATE WITHOUT THE EXPRESSED
PERMISSION OF THE SFPUC.

ELEVATION
DATUM



CONTRACT NO. HH-982

CITY AND COUNTY OF SAN FRANCISCO
PUBLIC UTILITIES COMMISSION
 INFRASTRUCTURE DIVISION
 ENGINEERING MANAGEMENT BUREAU
MOCCASIN SHOPS / OFFICE BUILDING
 AND MATERIALS BINS
BUILDING #76 - SHOP/OFFICE BUILDING
 ENLARGED PLANS - WEST

95% CD SUBMITTAL

CITY AND COUNTY OF SAN FRANCISCO
DEPARTMENT OF PUBLIC WORKS
 BUILDING DESIGN AND CONSTRUCTION
 Edgar Lopez - City Architect
 Julia Laue - Principal Architect / Division Manager
 Mark Dorlan - Architecture Services Manager

| | | |
|------------------|----------|-------------|
| SECTION MANAGER | DRAWN | Author |
| DIVISION MANAGER | DESIGNED | Designer |
| CITY ENGINEER | CHECKED | Checker |
| NO. | DATE | DESCRIPTION |
| | | BY |
| | | APPR'D |

| | |
|--|--|
| CHECKED / APPROVED | DRAWN |
| SECTION MANAGER | DESIGNED |
| SCALE | DATE |
| AS SHOWN | 10/08/15 |
| APPROVED | APPROVED |
| MANAGER, ENGINEERING MANAGEMENT BUREAU | DIVISION MANAGER, HETCH HETCHY WATER AND POWER |
| PLAN NO. | DRAWING/FILE NO. |
| 76-A4-01 | |



FOR THE SOLE USE OF THE DOCUMENT RECIPIENT - DO NOT CITE, COPY, OR CIRCULATE WITHOUT THE EXPRESSED PERMISSION OF THE SFPUC.

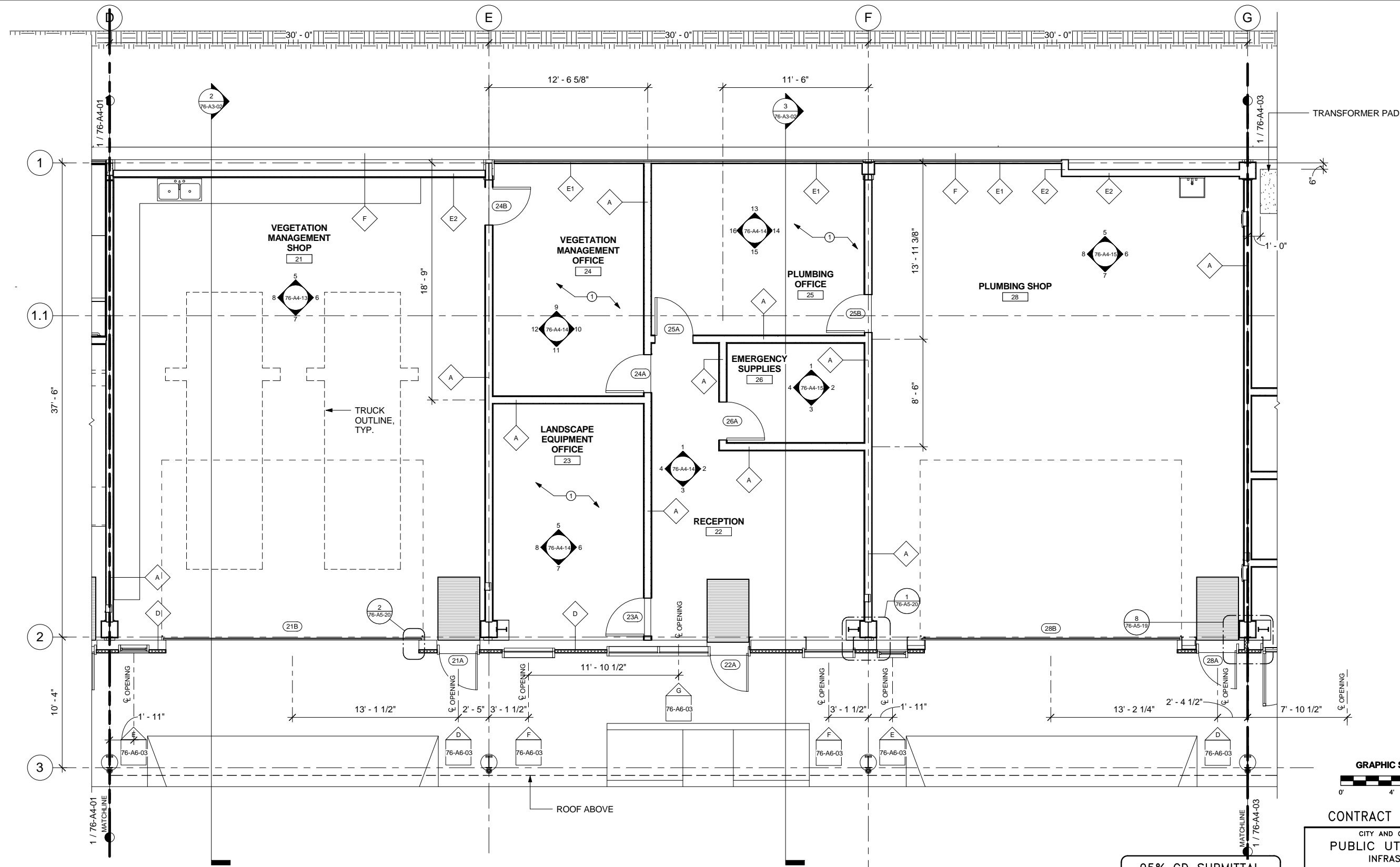
ELEVATION DATUM

1 ENLARGED FLOOR PLAN - WEST
 1/4" = 1'-0"

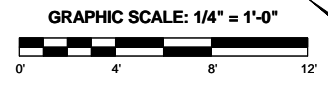
○ KEY NOTES - A4-01

- 1 PROVIDE (1) TRASH 23 GALLON CONTAINER FOR BREAK ROOM AND (1) CAN/BOTTLE RECYCLING 23 GALLON PER MRPII LEED REQUIREMENT





TRANSFORMER PAD



CONTRACT NO. HH-982

CITY AND COUNTY OF SAN FRANCISCO
PUBLIC UTILITIES COMMISSION
 INFRASTRUCTURE DIVISION
 ENGINEERING MANAGEMENT BUREAU
MOCCASIN SHOPS / OFFICE BUILDING
 AND MATERIALS BINS
BUILDING #76 - SHOP/OFFICE BUILDING
 ENLARGED PLANS - CENTER

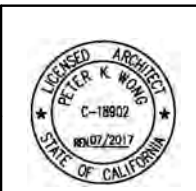
1 ENLARGED FLOOR PLAN - CENTER
 1/4" = 1'-0"

- KEY NOTES - A4-02**
- 1 PROVIDE PAPER RECYCLING 7 GALLON CONTAINER FOR EACH CUBICLE OFFICE PER MRP1 LEED REQUIREMENT



FOR THE SOLE USE OF THE DOCUMENT RECIPIENT - DO NOT CITE, COPY, OR CIRCULATE WITHOUT THE EXPRESSED PERMISSION OF THE SFPUC.

ELEVATION DATUM



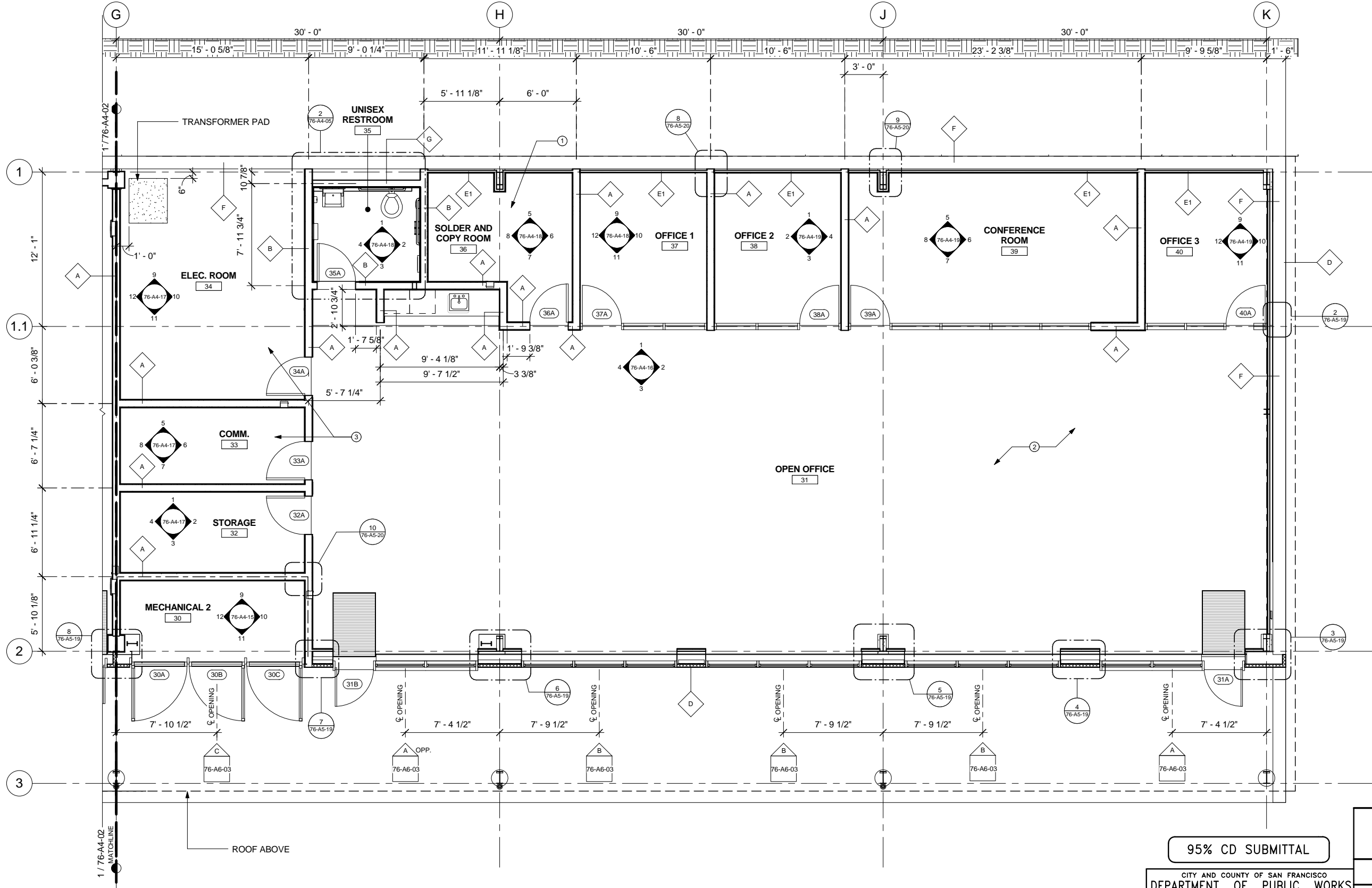
95% CD SUBMITTAL

CITY AND COUNTY OF SAN FRANCISCO
DEPARTMENT OF PUBLIC WORKS
 BUILDING DESIGN AND CONSTRUCTION
 Edgar Lopez - City Architect
 Julia Laue - Principal Architect / Division Manager
 Mark Dorlan - Architecture Services Manager

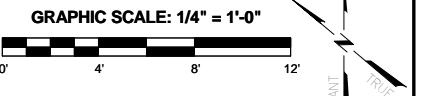
| | | |
|------------------|----------|-------------|
| SECTION MANAGER | DRAWN | Author |
| DIVISION MANAGER | DESIGNED | Designer |
| CITY ENGINEER | CHECKED | Checker |
| NO. | DATE | DESCRIPTION |
| | | BY |
| | | APPR'D |
| REVISIONS | | |

| | |
|--|--|
| CHECKED / APPROVED | DRAWN |
| SECTION MANAGER | DESIGNED |
| APPROVED | APPROVED |
| MANAGER, ENGINEERING MANAGEMENT BUREAU | DIVISION MANAGER, HETCH HETCHY WATER AND POWER |
| PLAN NO. 76-A4-02 | DRAWING/FILE NO. |
| | REVISION NO. |





- KEY NOTES - A4-03**
- 1 PROVIDE PAPER RECYCLING 23 GALLON CONTAINER PER MRP1 LEED REQUIREMENT
 - 2 PROVIDE PAPER RECYCLING 7 GALLON CONTAINER FOR EACH CUBICLE OFFICE PER MRP1 LEED REQUIREMENT
 - 3 PROVIDE FIRE TREATED PLYWOOD ON ALL WALLS REQUIRED PER ELECTRICAL/COMMUNICATION EQUIPMENT



CONTRACT NO. HH-982

CITY AND COUNTY OF SAN FRANCISCO
PUBLIC UTILITIES COMMISSION
 INFRASTRUCTURE DIVISION
 ENGINEERING MANAGEMENT BUREAU
MOCCASIN SHOPS / OFFICE BUILDING
 AND MATERIALS BINS
BUILDING #76 – SHOP/OFFICE BUILDING
 ENLARGED PLANS – EAST

95% CD SUBMITTAL

CITY AND COUNTY OF SAN FRANCISCO
DEPARTMENT OF PUBLIC WORKS
 BUILDING DESIGN AND CONSTRUCTION
 Edgar Lopez – City Architect
 Julia Laue – Principal Architect / Division Manager
 Mark Dorlan – Architecture Services Manager

| | | |
|------------------|----------|-------------|
| SECTION MANAGER | DRAWN | Author |
| DIVISION MANAGER | DESIGNED | Designer |
| CITY ENGINEER | CHECKED | Checker |
| NO. | DATE | DESCRIPTION |
| REVISIONS | | |

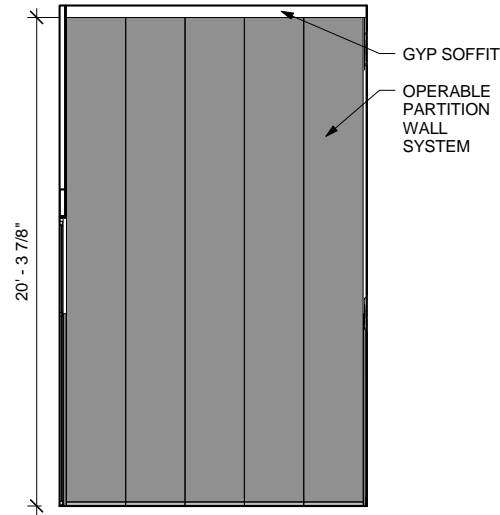
| | |
|--|--|
| CHECKED / APPROVED | DRAWN |
| SECTION MANAGER | DESIGNED |
| APPROVED | DATE |
| SCALE | AS SHOWN |
| DATE | 10/08/15 |
| MANAGER, ENGINEERING MANAGEMENT BUREAU | DIVISION MANAGER, HETCH HETCHY WATER AND POWER |
| PLAN NO. | DRAWING/FILE NO. |
| 76-A4-03 | REVISION NO. |



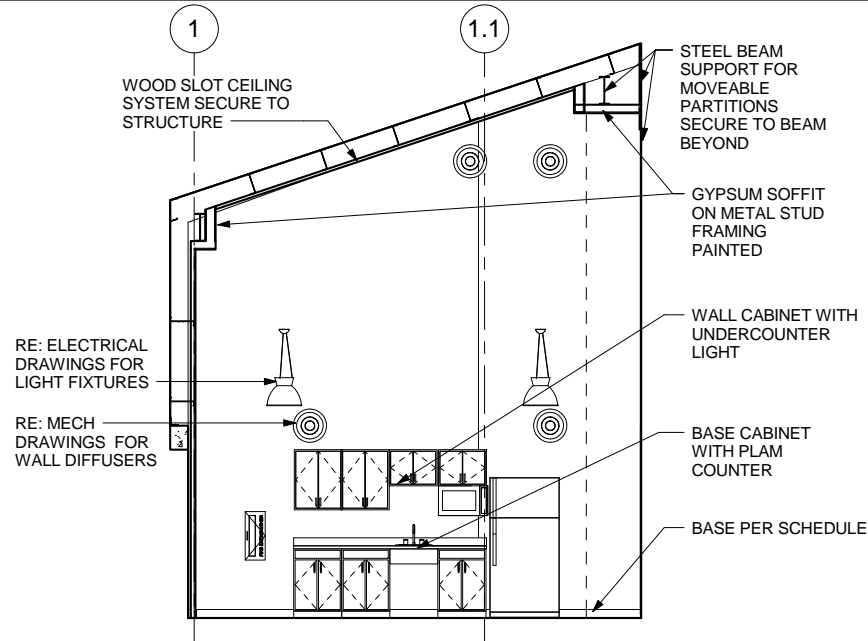
FOR THE SOLE USE OF THE DOCUMENT RECIPIENT – DO NOT CITE, COPY, OR CIRCULATE WITHOUT THE EXPRESSED PERMISSION OF THE SFPUC.

ELEVATION DATUM

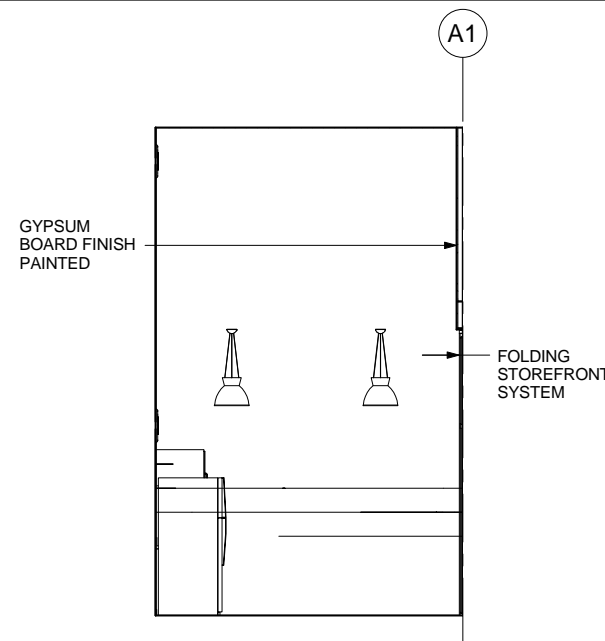
1 ENLARGED FLOOR PLAN - EAST
 1/4" = 1'-0"



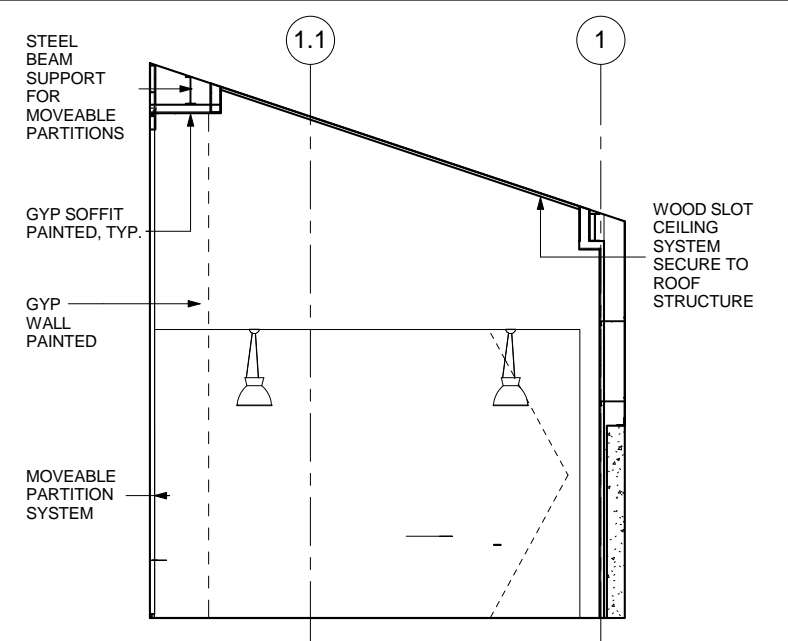
1 BREAK RM3 - NORTH
1/4" = 1'-0"



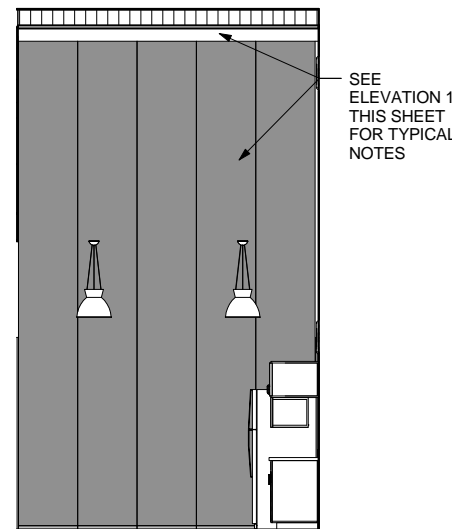
2 BREAK RM3 - EAST
1/4" = 1'-0"



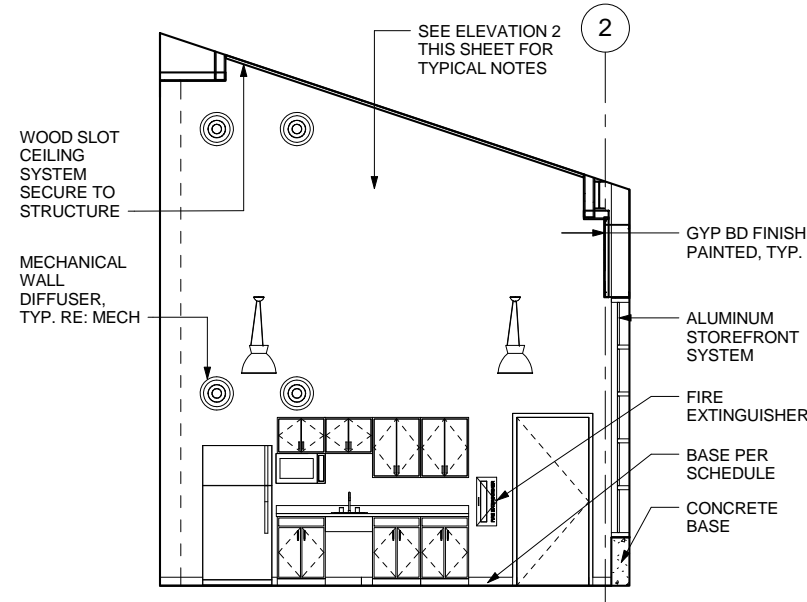
3 BREAK RM3 - SOUTH
1/4" = 1'-0"



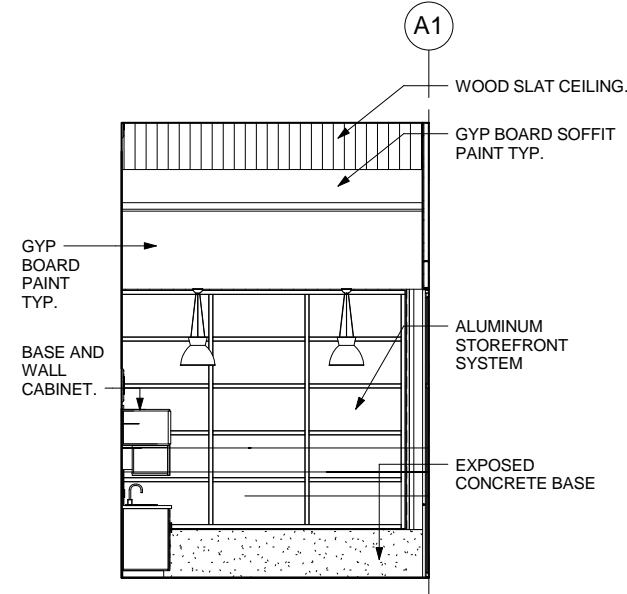
4 BREAK RM3 - WEST
1/4" = 1'-0"



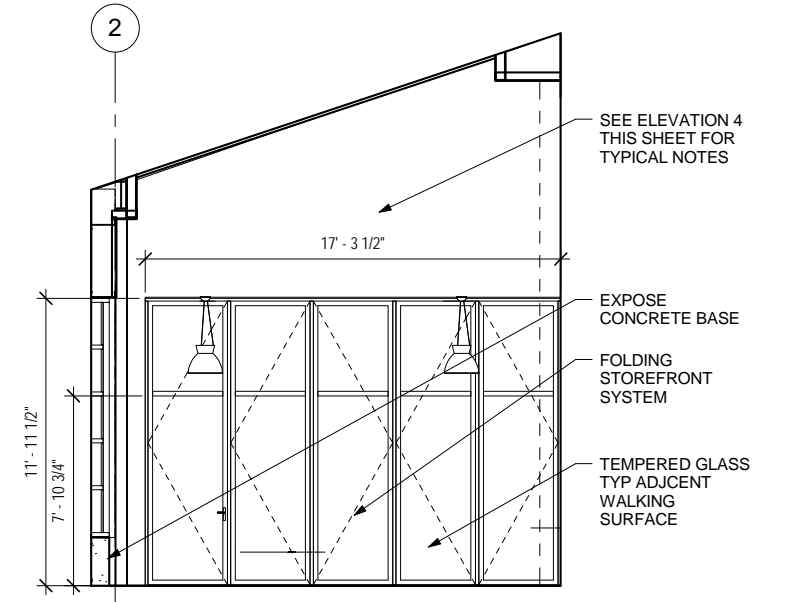
5 BREAK RM2 - NORTH
1/4" = 1'-0"



6 BREAK RM2 - EAST
1/4" = 1'-0"



7 BREAK RM2 - SOUTH
1/4" = 1'-0"



8 BREAK RM2 - WEST
1/4" = 1'-0"



CONTRACT NO. HH-982

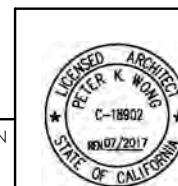
CITY AND COUNTY OF SAN FRANCISCO
PUBLIC UTILITIES COMMISSION
INFRASTRUCTURE DIVISION
ENGINEERING MANAGEMENT BUREAU

MOCCASIN SHOPS / OFFICE BUILDING
AND MATERIALS BINS

BUILDING #76 - SHOP/OFFICE BUILDING
INTERIOR ELEVATIONS

95% CD SUBMITTAL

CITY AND COUNTY OF SAN FRANCISCO
DEPARTMENT OF PUBLIC WORKS
BUILDING DESIGN AND CONSTRUCTION
Edgar Lopez - City Architect
Julia Laue - Principal Architect / Division Manager
Mark Dorlan - Architecture Services Manager

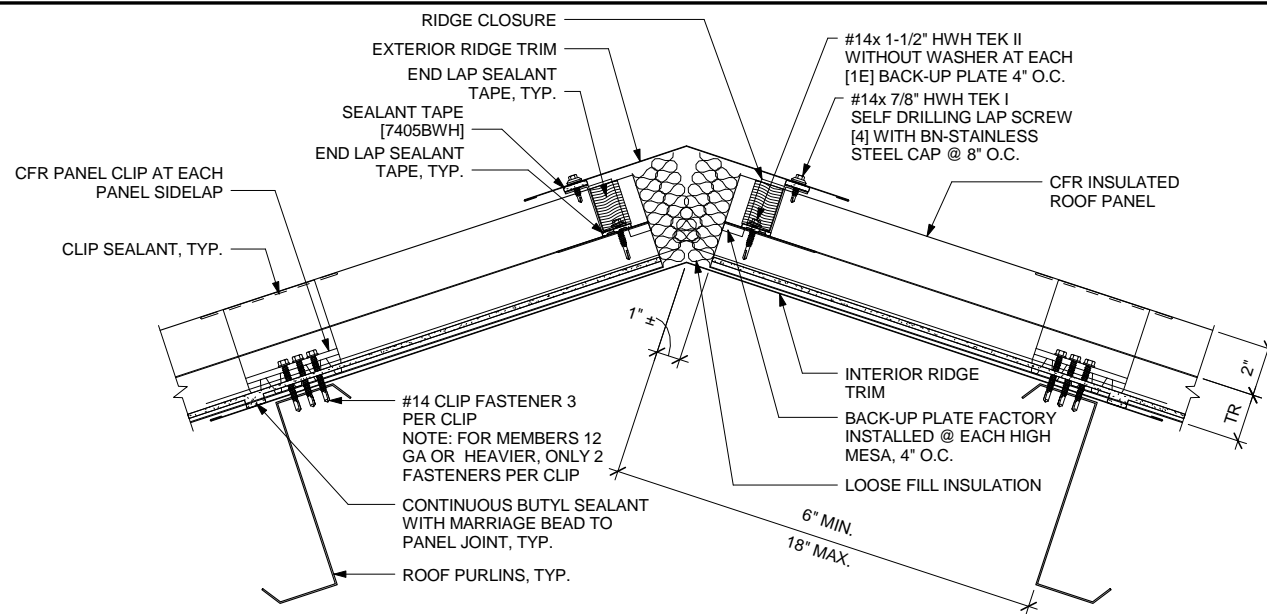


| | | | | |
|------------------|----------|-------------|--|--|
| SECTION MANAGER | DRAWN | Author | CHECKED / APPROVED | DRAWN |
| DIVISION MANAGER | DESIGNED | Designer | SECTION MANAGER | DESIGNED |
| CITY ENGINEER | CHECKED | Checker | SCALE | DATE |
| | | | AS SHOWN | 10/08/15 |
| | | | APPROVED | APPROVED |
| | | | MANAGER, ENGINEERING MANAGEMENT BUREAU | DIVISION MANAGER, HETCH HETCHY WATER AND POWER |
| NO. | DATE | DESCRIPTION | BY | APPR'D |
| REVISIONS | | | | |

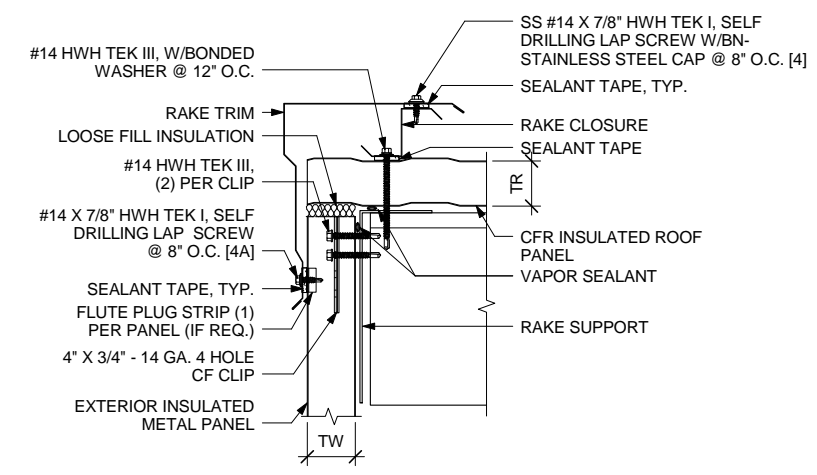
FOR THE SOLE USE OF THE DOCUMENT
RECIPIENT - DO NOT CITE, COPY, OR
CIRCULATE WITHOUT THE EXPRESSED
PERMISSION OF THE SFPUC.

ELEVATION
DATUM

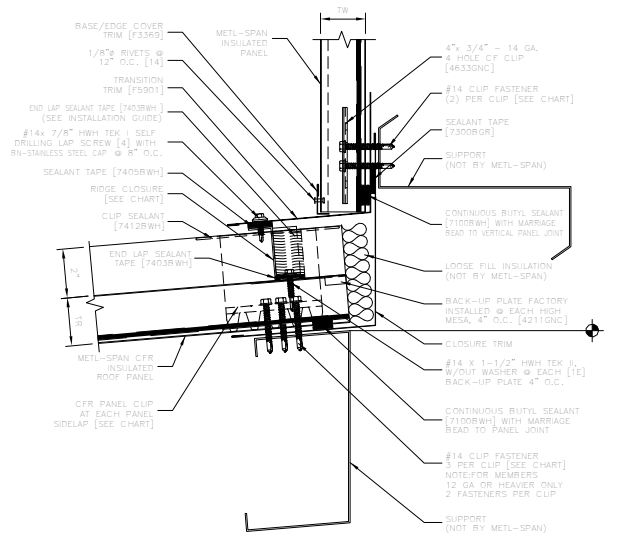
76-A4-09



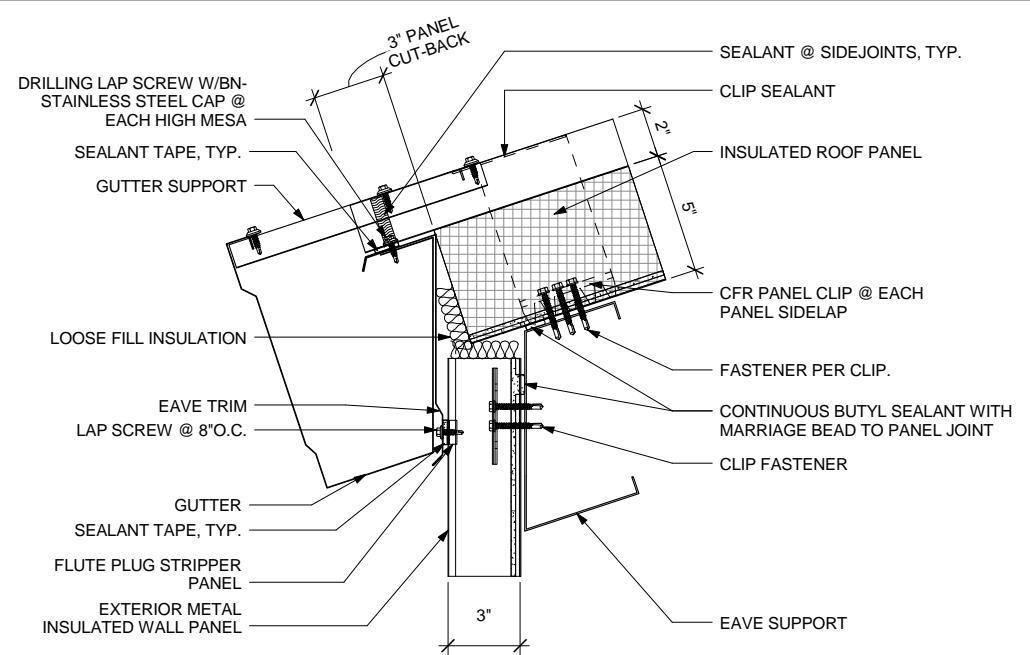
6 RIDGE DETAIL
3" = 1'-0"



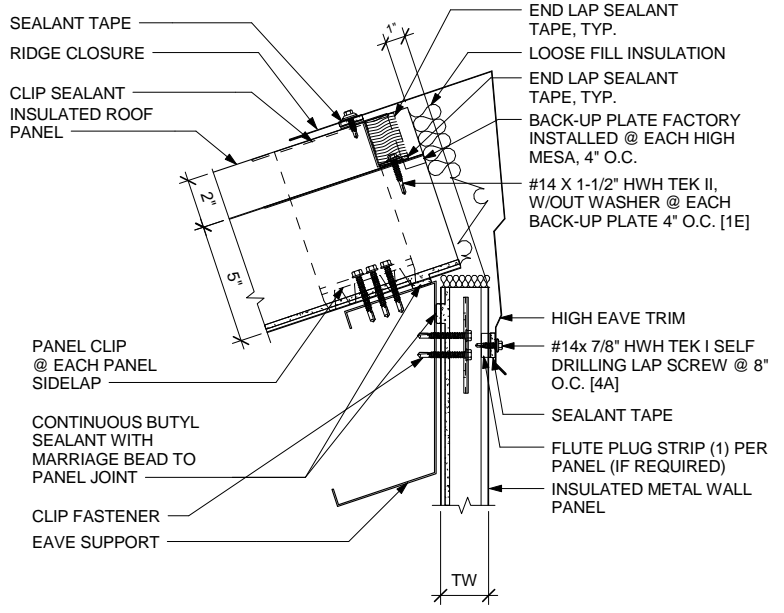
3 HIGH PROFILE RAKE
3" = 1'-0"



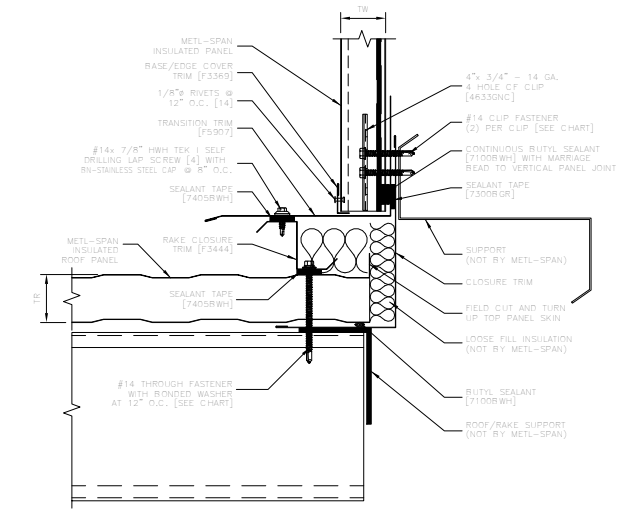
1 HIGH EAVE TRANSITION WITH HIGH WALL DETAIL
3" = 1'-0"



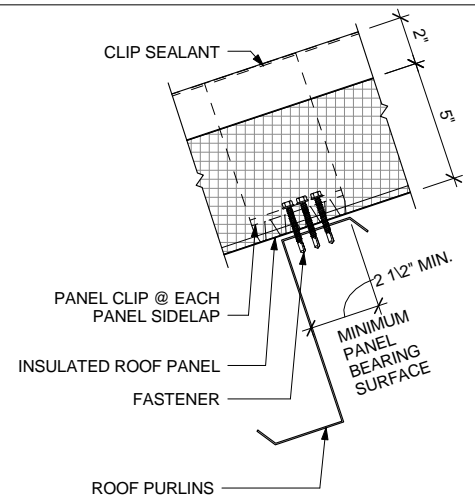
7 LOW EAVE DETAIL WITH GUTTER
3" = 1'-0"



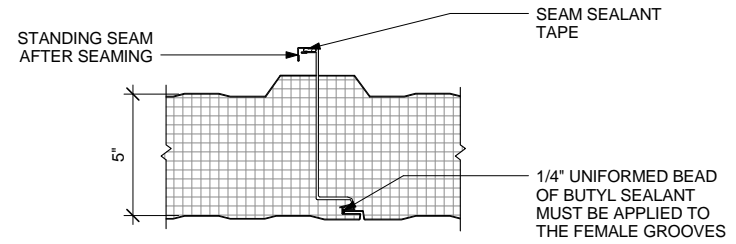
4 HIGH EAVE DETAIL
3" = 1'-0"



2 ROOF TO HIGH WALL TRANSITION DETAIL
3" = 1'-0"



8 INTERMEDIATE ROOF PANEL ATTACHMENT DETAIL
3" = 1'-0"



5 ROOF PANEL JOINT DETAIL
3" = 1'-0"

FOR THE SOLE USE OF THE DOCUMENT RECIPIENT - DO NOT CITE, COPY, OR CIRCULATE WITHOUT THE EXPRESSED PERMISSION OF THE SFPUC.

ELEVATION DATUM



95% CD SUBMITTAL

| | | | |
|--|----------|----------|------------------------------|
| CITY AND COUNTY OF SAN FRANCISCO DEPARTMENT OF PUBLIC WORKS BUILDING DESIGN AND CONSTRUCTION | | | |
| SECTION MANAGER | DRAWN | Author | CHECKED / APPROVED |
| DIVISION MANAGER | DESIGNED | Designer | SECTION MANAGER |
| CITY ENGINEER | CHECKED | Checker | SCALE AS SHOWN DATE 10/08/15 |
| NO. DATE DESCRIPTION | | BY | APPROVED |
| REVISIONS | | | |

| | | | |
|---|--|--|--|
| CONTRACT NO. HH-982 | | | |
| CITY AND COUNTY OF SAN FRANCISCO PUBLIC UTILITIES COMMISSION INFRASTRUCTURE DIVISION ENGINEERING MANAGEMENT BUREAU | | | |
| MOCCASIN SHOPS / OFFICE BUILDING AND MATERIALS BINS | | | |
| BUILDING #76 - SHOP/OFFICE BUILDING ROOF DETAILS | | | |
| MANAGER, ENGINEERING MANAGEMENT BUREAU | | DIVISION MANAGER, HETCH HETCHY WATER AND POWER | |
| 76-A5-01 | | DRAWING/FILE NO. | |