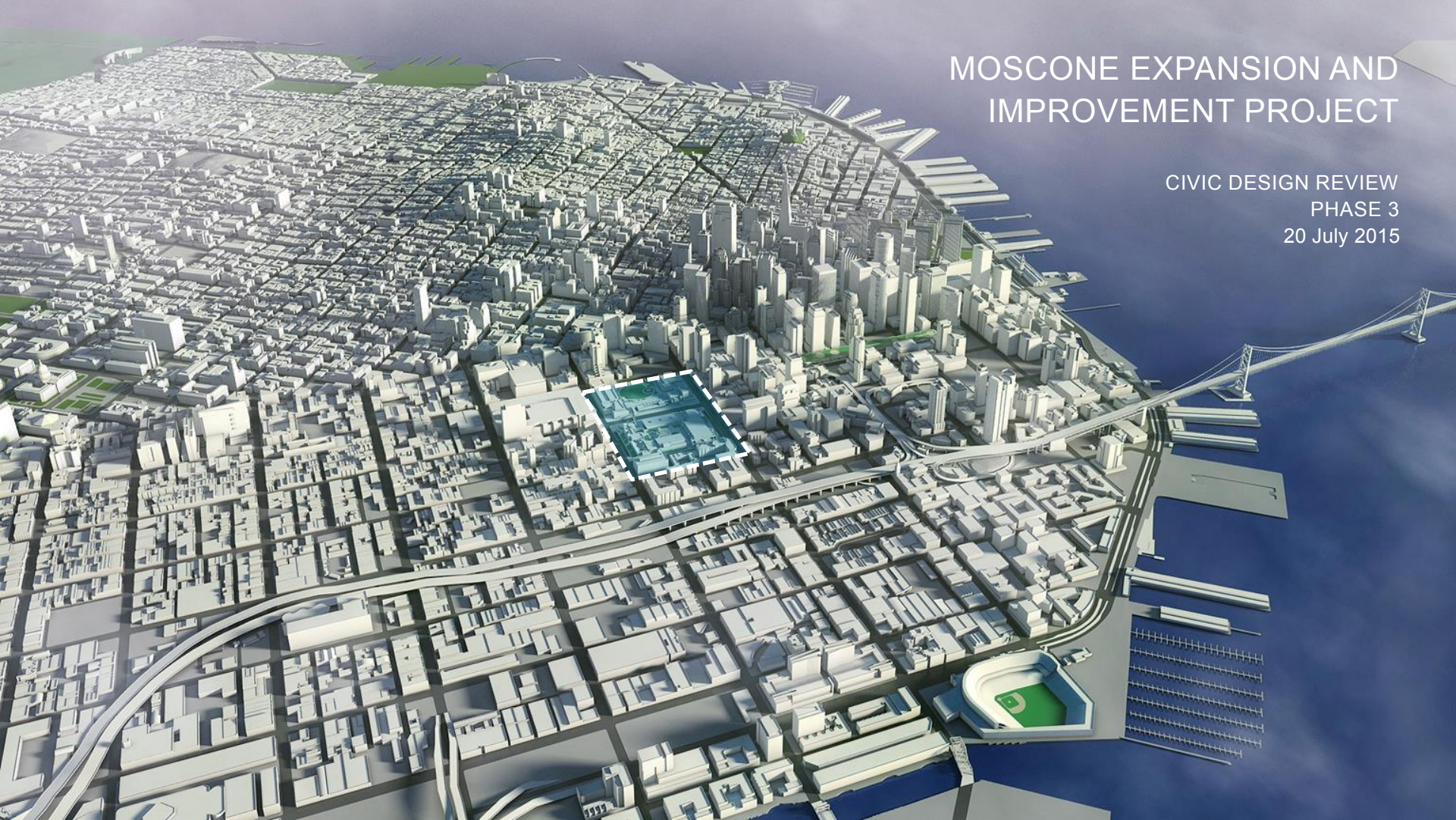


# MOSCONE EXPANSION AND IMPROVEMENT PROJECT

CIVIC DESIGN REVIEW  
PHASE 3  
20 July 2015





An aerial, top-down view of a city model. The buildings are rendered in a light, monochromatic grey/white color. A central area, likely a park or plaza, is highlighted in a vibrant green. This green area contains several circular and rectangular shapes, possibly representing playgrounds, sports fields, or public art installations. The surrounding city blocks are densely packed with buildings of varying heights and footprints. The overall perspective is from a high angle, looking down at the city layout.

## **CIVIC DESIGN REVIEW PHASE II COMMENTS**

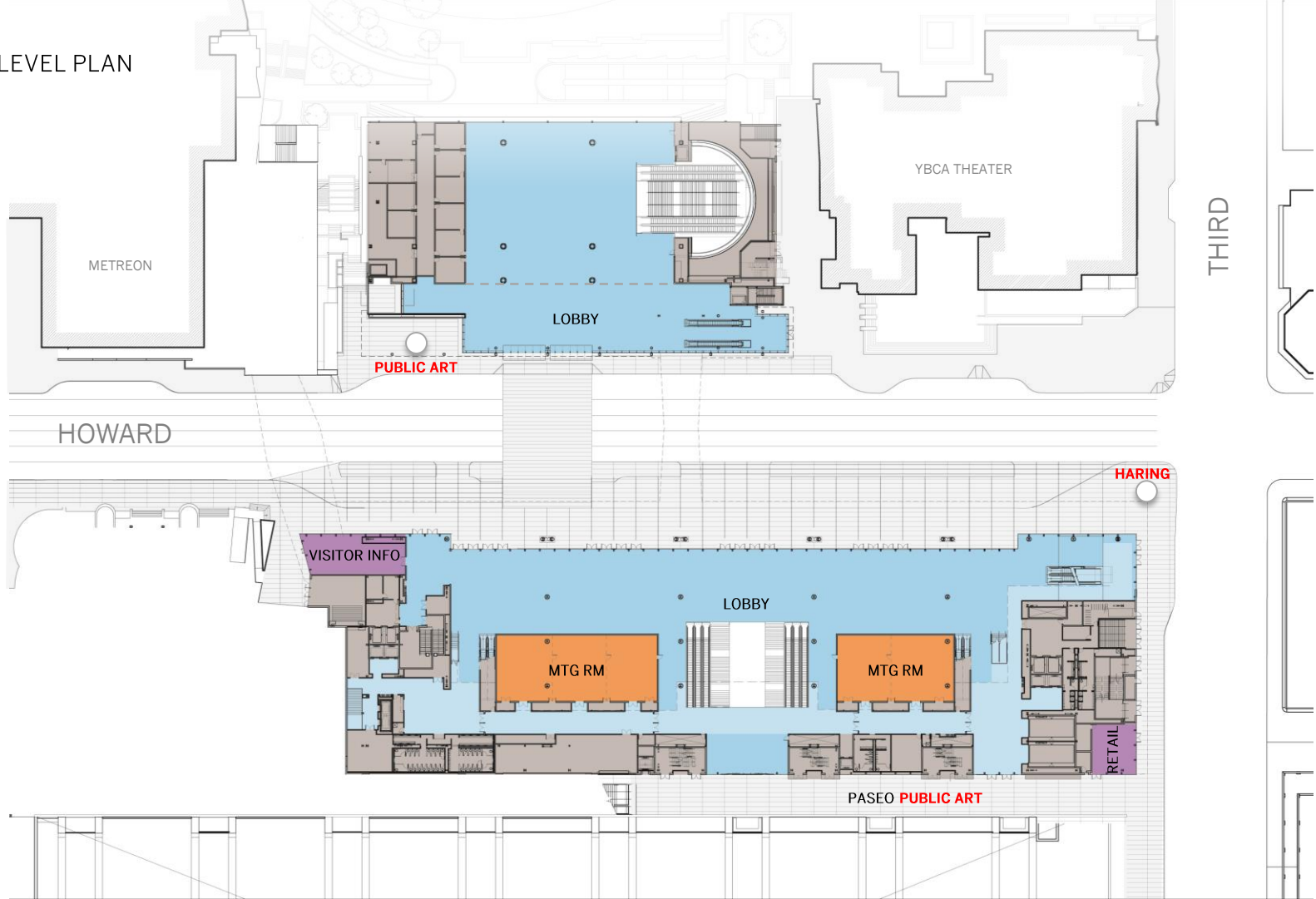
IDENTIFY PASEO ENTRY WITH CAFÉ, CHAIRS AND ACTIVITY  
SEATING AROUND KEITH HARING SCULPTURE  
FURTHER DEFINE ARCHITECTURAL SCREEN THAT SPONSORS GREEN WALL  
CHERRY TREES AT 2<sup>ND</sup> LEVEL SOUTH TERRACE MAY CONFLICT WITH PROPOSED TRUMPET VINES

## **DESIGN DEVELOPMENT SINCE PHASE II REVIEW**

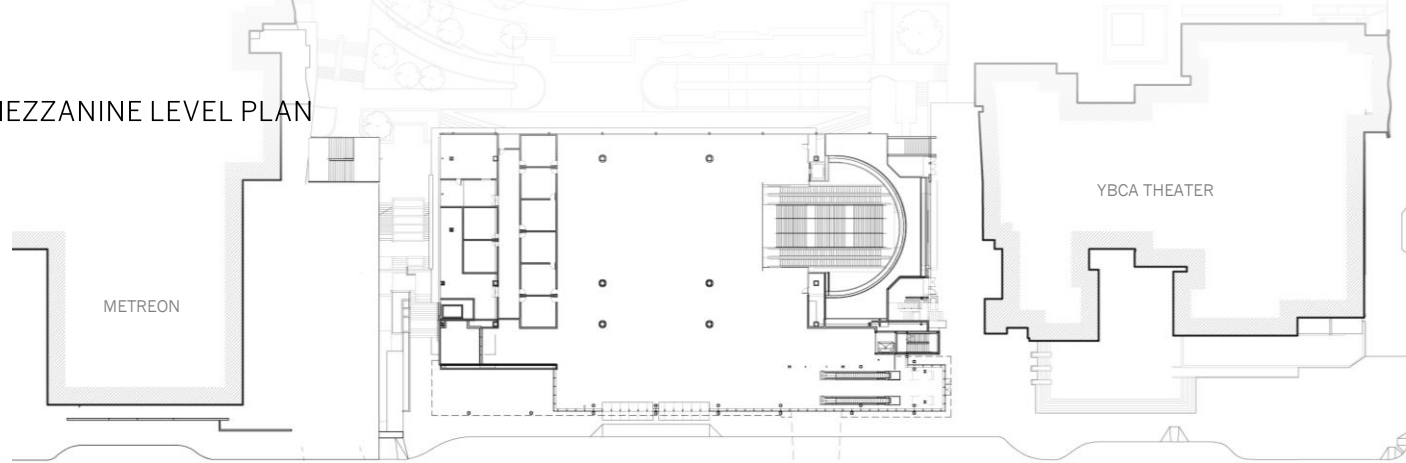
PUBLIC ART ON LIGHT BRIDGE  
METAL SCREEN DESIGN  
DESIGN OF VISITOR INFORMATION CENTER

DESIGN OF TODDLER PLAY AREA  
MATERIALS AND PLANT SELECTION AT WEST PLAZA, PARK BRIDGE AND SOUTH TERRACE

FIRST LEVEL PLAN

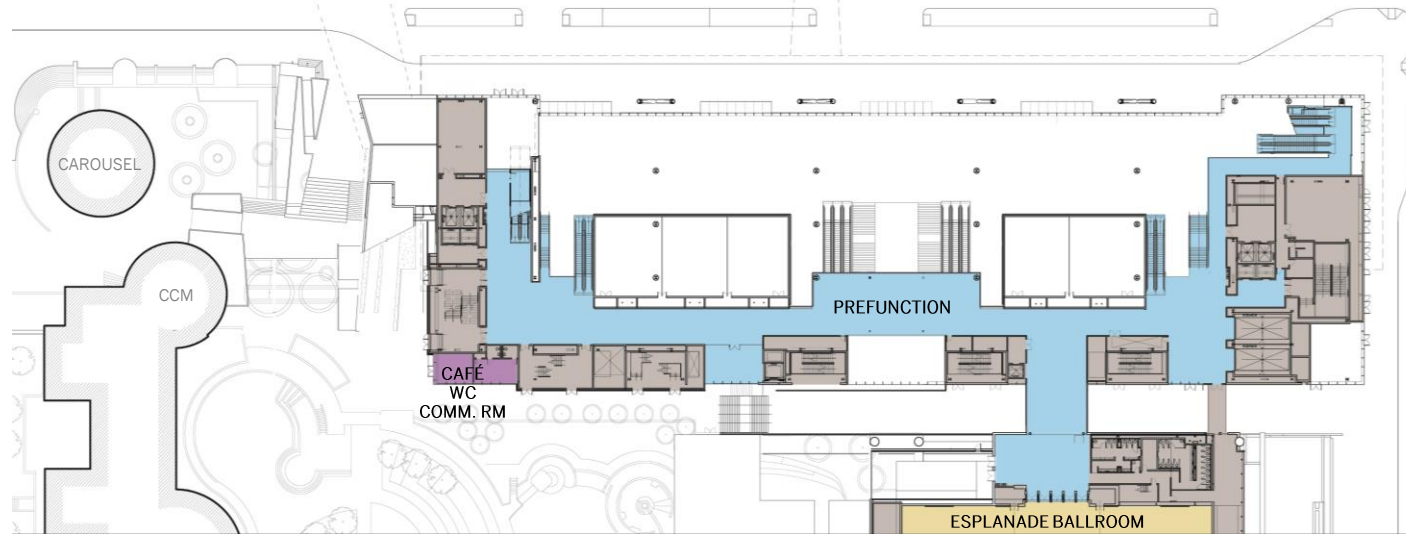


FIRST MEZZANINE LEVEL PLAN



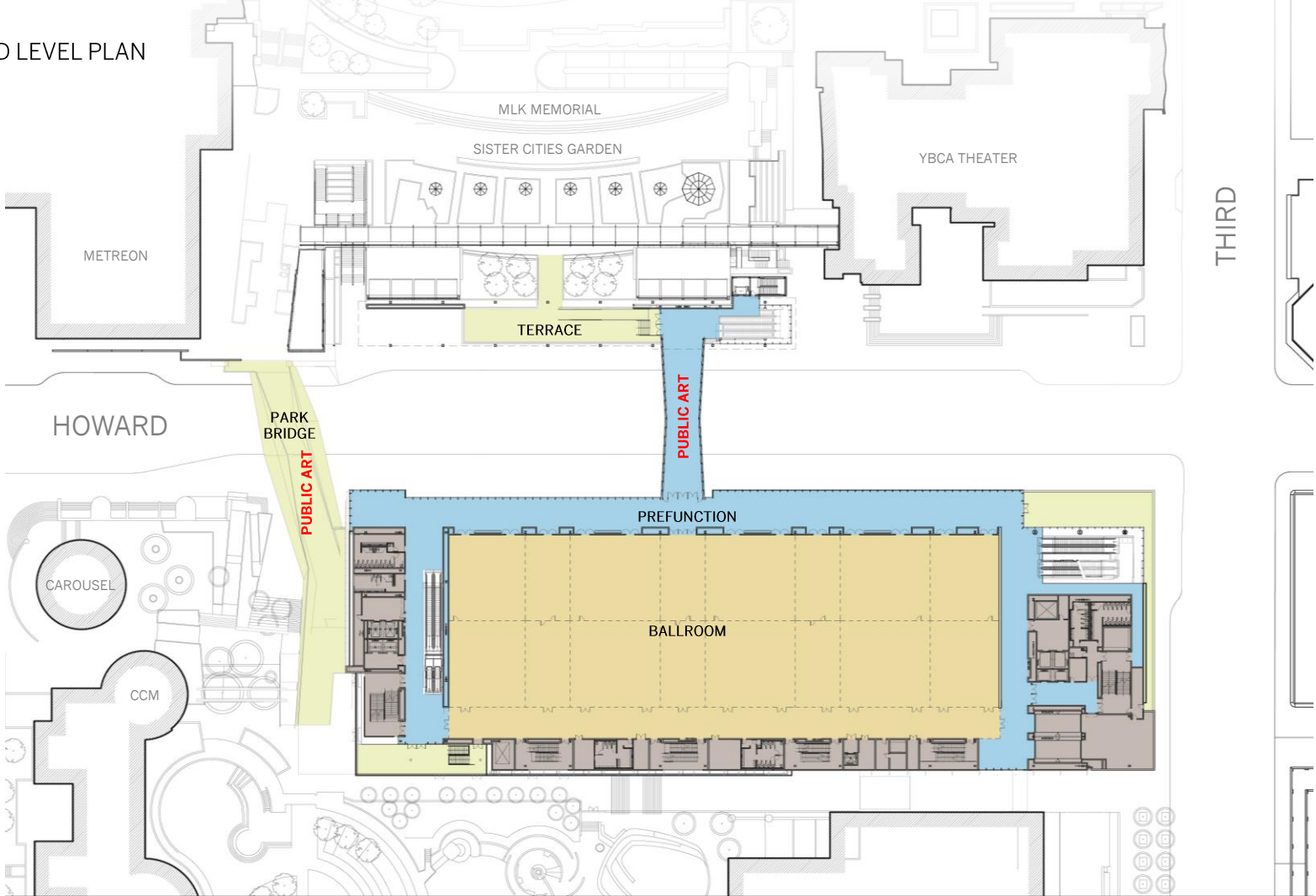
THIRD

HOWARD

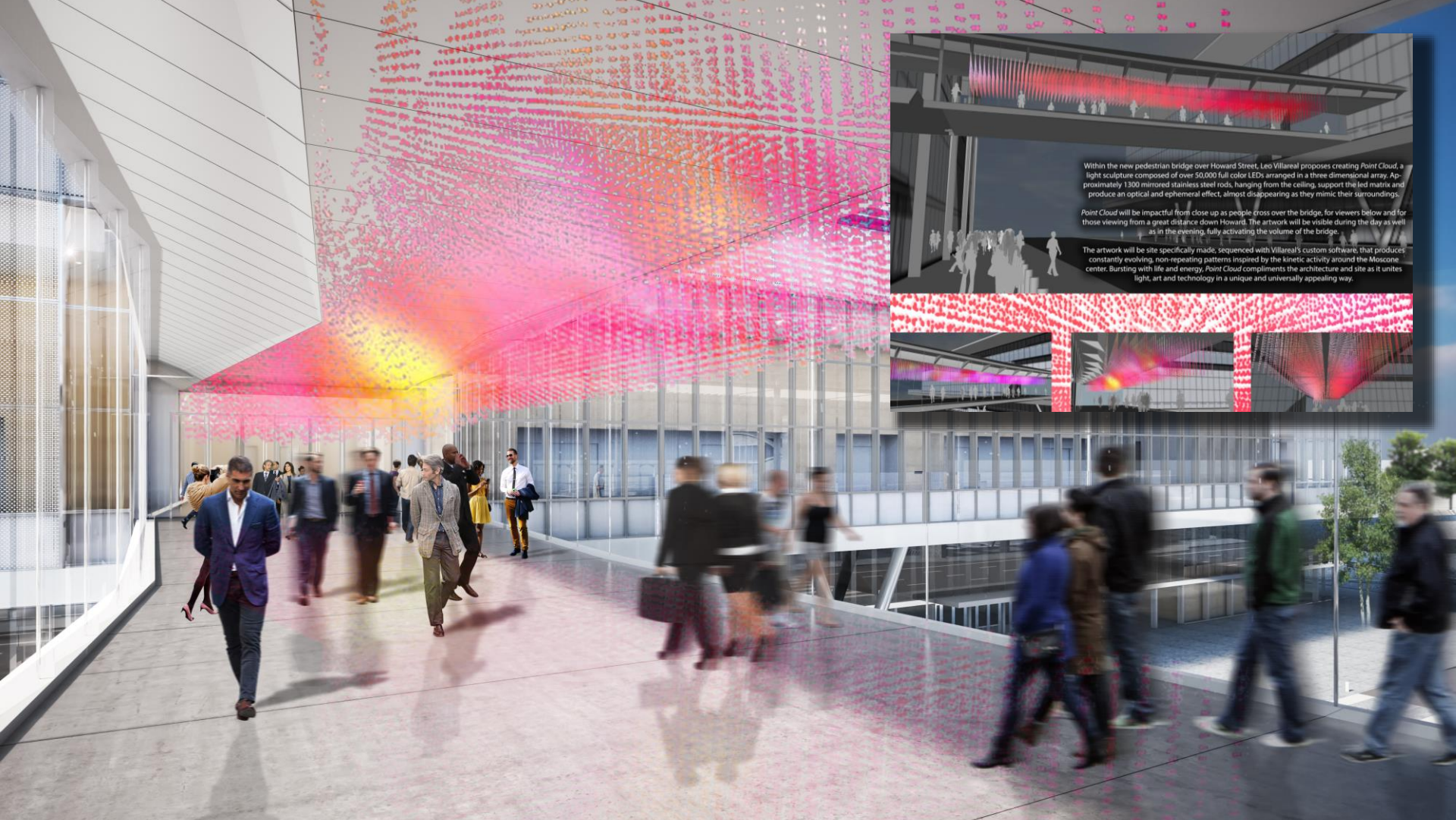


ESPLANADE BALLROOM

SECOND LEVEL PLAN



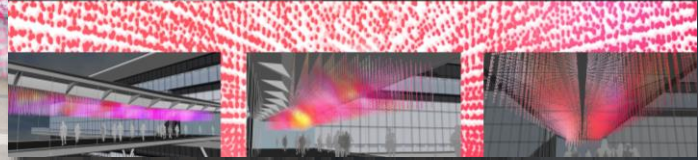




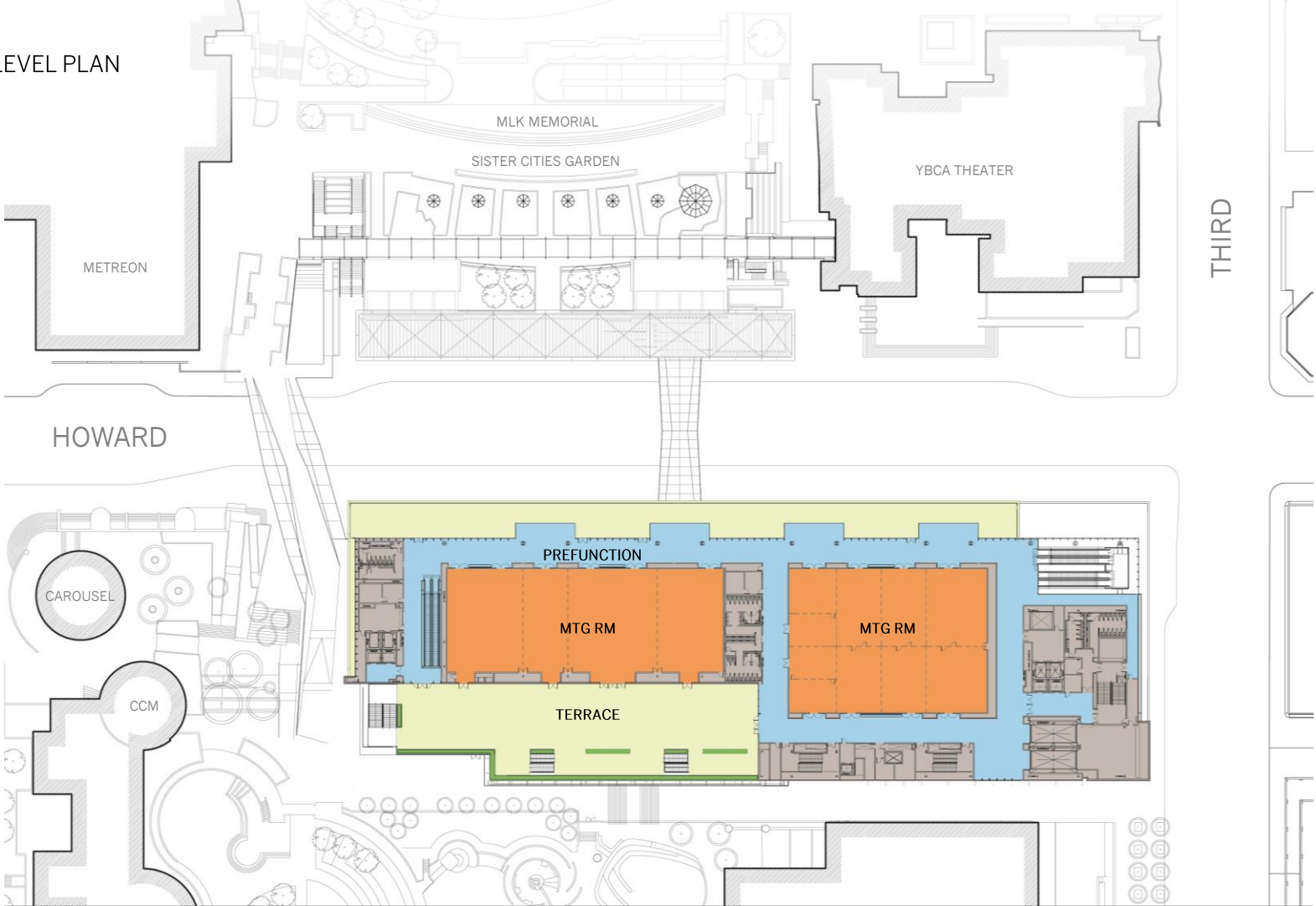
Within the new pedestrian bridge over Howard Street, Leo Villareal proposes creating *Point Cloud*, a light sculpture composed of over 50,000 full color LEDs arranged in a three dimensional array. Approximately 1300 mirrored stainless steel rods, hanging from the ceiling, support the led matrix and produce an optical and ephemeral effect, almost disappearing as they mimic their surroundings.

*Point Cloud* will be impactful from close up as people cross over the bridge, for viewers below and for those viewing from a great distance down Howard. The artwork will be visible during the day as well as in the evening, fully activating the volume of the bridge.

The artwork will be site specifically made, sequenced with Villareal's custom software, that produces constantly evolving, non-repeating patterns inspired by the kinetic activity around the Moscone center. Bursting with life and energy, *Point Cloud* compliments the architecture and site as it unites light, art and technology in a unique and universally appealing way.



THIRD LEVEL PLAN





Mission Street

Yerba Buena Gardens

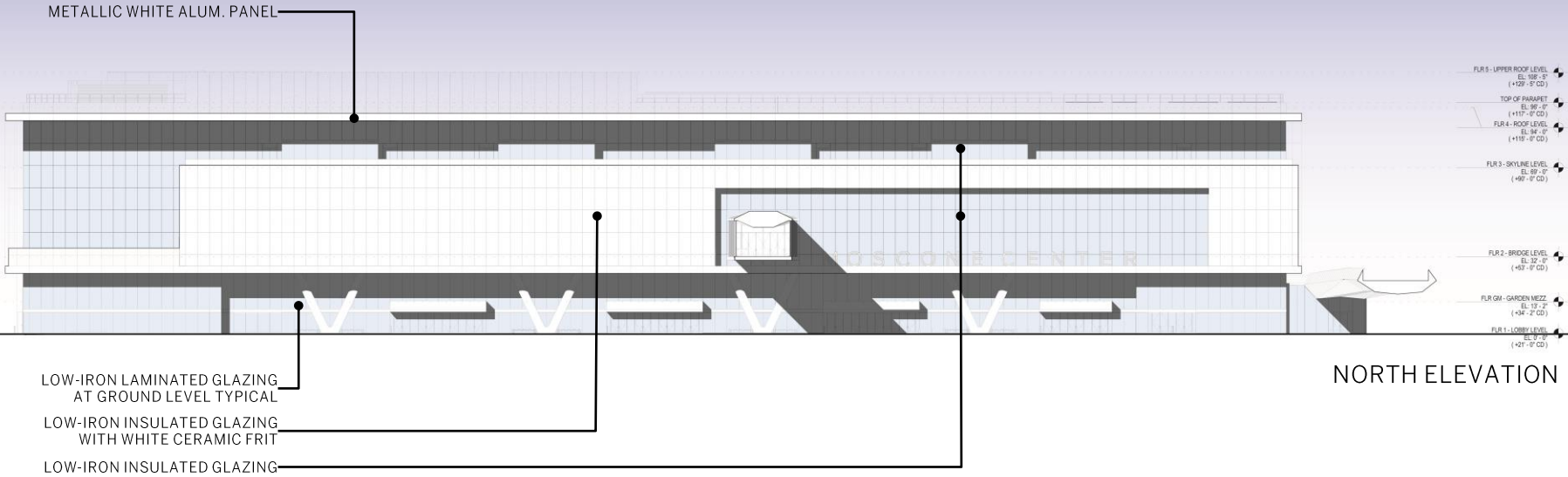
Howard Street

Children's Playground

Folsom Street

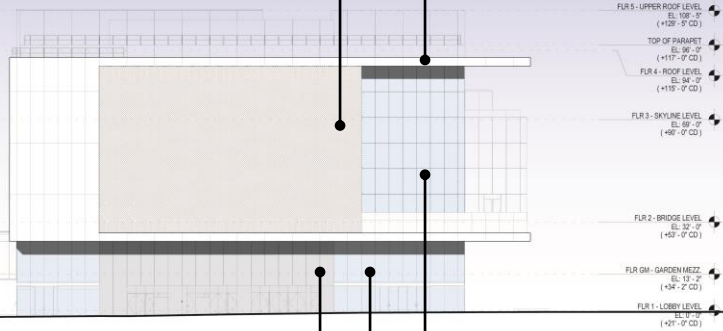
PROPOSED BUILDING SECTION





NORTH ELEVATION

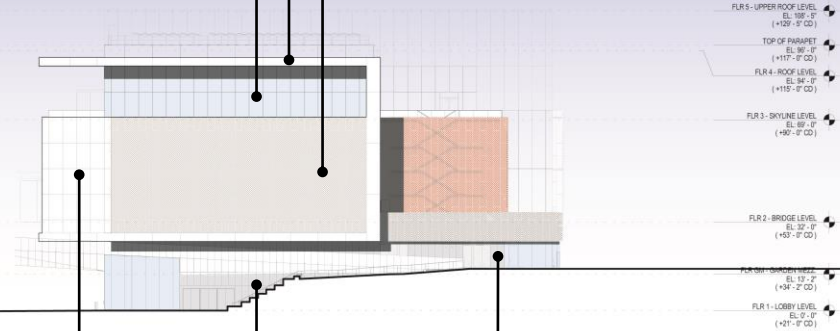
METALLIC WHITE ALUM. PANEL  
METALLIC WHITE PUNCHED ALUM.  
SCREEN OVER PLASTER WALL



EAST ELEVATION

GRAY ALUM. PANEL  
LOW-IRON LAMINATED GLAZING  
AT GROUND LEVEL TYPICAL  
LOW-IRON INSULATED GLAZING

METALLIC WHITE PUNCHED ALUM.  
SCREEN OVER PLASTER WALL  
METALLIC WHITE ALUM. PANEL  
LOW-IRON INSULATED GLAZING



WEST ELEVATION

LOW-IRON INSULATED GLAZING  
WITH WHITE CERAMIC FRIT  
GRAY ALUM. PANEL  
ARCHITECTURAL CONCRETE

METALLIC WHITE PUNCHED METAL  
SCREEN OVER PLASTER WALL

METALLIC WHITE ALUM. PANEL

MOSCONE  
CENTER

LOW-IRON LAMINATED GLAZING  
AT GROUND LEVEL TYPICAL

ARCHITECTURAL CONCRETE

EXTERIOR PLASTER

FUR5 - UPPER ROOF LEVEL

EL. 99'-0"

(+122'-9" CD)

TOP OF PARAPET

EL. 99'-0"

(+119'-0" CD)

FUR4 - ROOF LEVEL

EL. 94'-0"

(+115'-0" CD)

FUR3 - SKYLINE LEVEL

EL. 89'-0"

(+69'-0" CD)

FUR2 - BRIDGE LEVEL

EL. 32'-0"

(+63'-0" CD)

FUR0H - GARDEN MEZZ.

EL. 12'-0"

(+34'-2" CD)

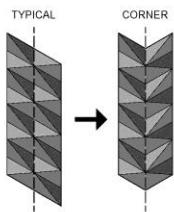
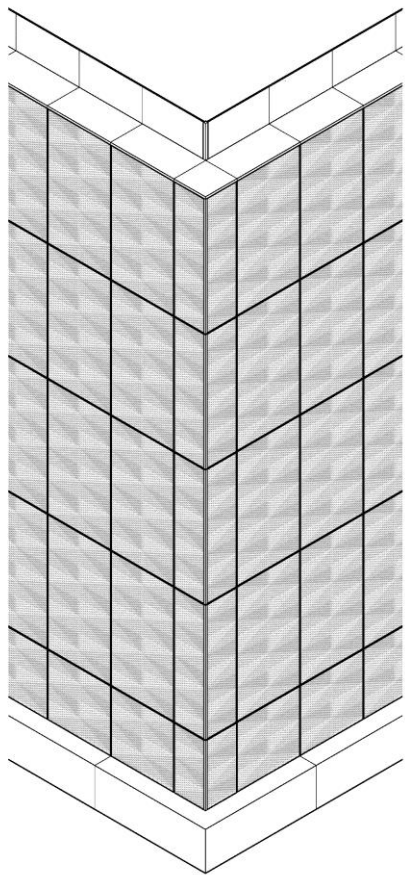
FUR1 - LOBBY LEVEL

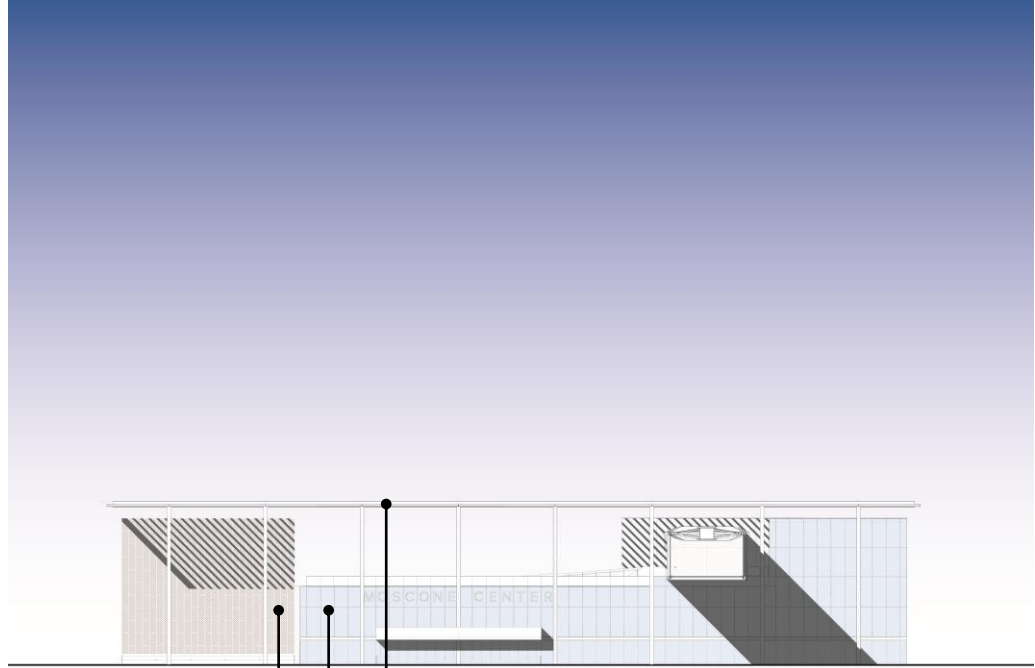
EL. 0'-0"

(+21'-0" CD)

SOUTH ELEVATION







NORTH BUILDING SOUTH ELEVATION

- METALLIC WHITE PUNCHED METAL SCREEN OVER PLASTER WALL
- LOW-IRON LAMINATED GLAZING AT GROUND LEVEL TYPICAL
- METALLIC WHITE STEEL CANOPY



PROPOSED VIEW FROM THIRD AND HOWARD





PROPOSED SOUTH VIEW FROM  
THIRD AND HOWARD





PROPOSED SOUTH LOBBY ENTRY

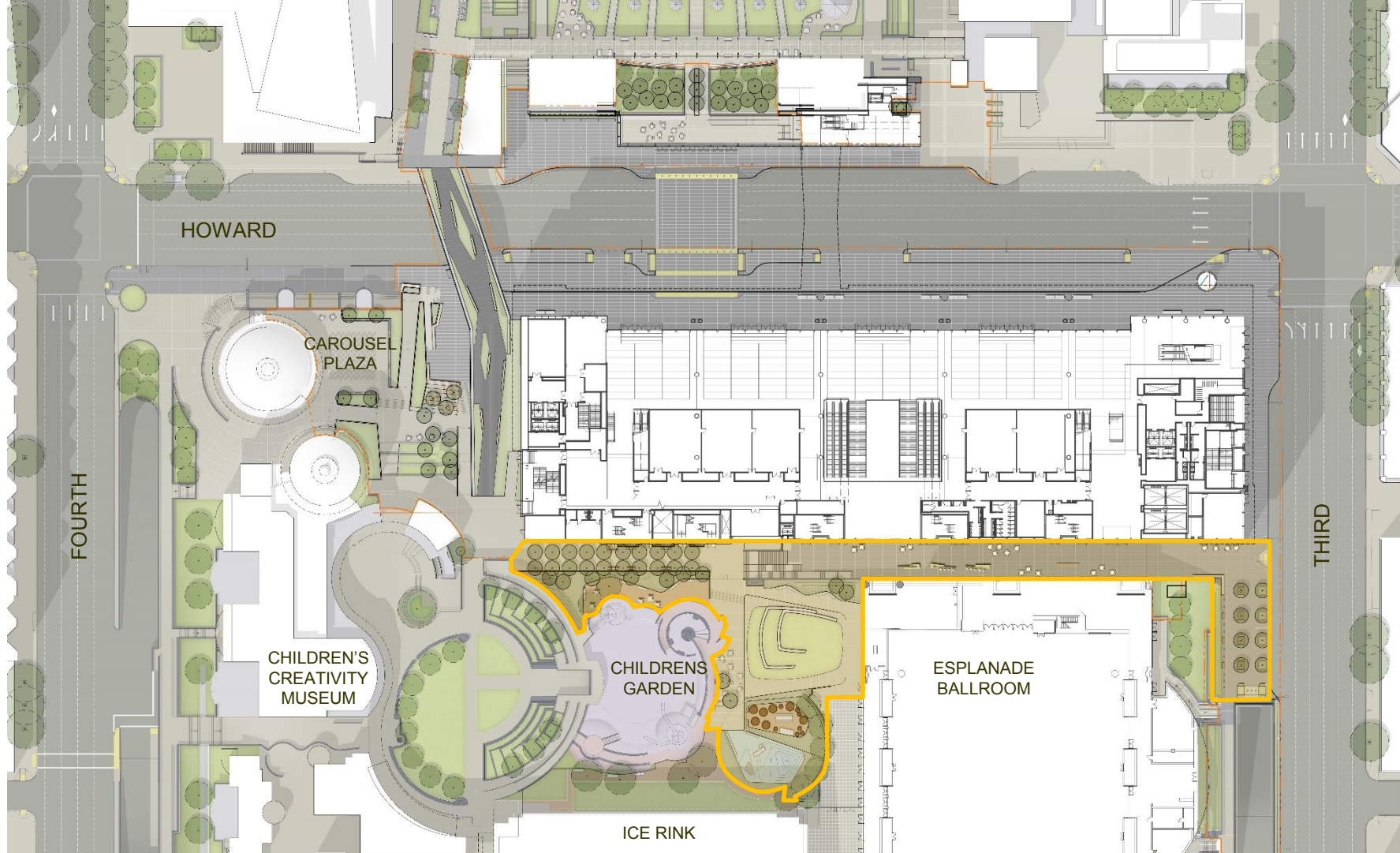




PROPOSED VISITOR  
INFORMATION CENTER







HOWARD

CAROUSEL  
PLAZA

CHILDREN'S  
CREATIVITY  
MUSEUM

CHILDRENS  
GARDEN

ICE RINK

ESPLANADE  
BALLROOM

FOURTH

THIRD





Bike Rack



YBCBD Street Furniture – Cast Iron Bench



THIRD STREET PLAZA



PROPOSED WEST VIEW OF  
PASEO FROM THIRD STREET

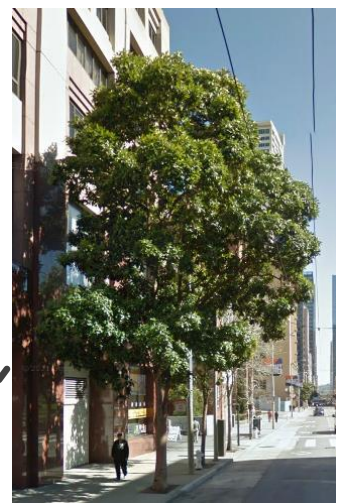
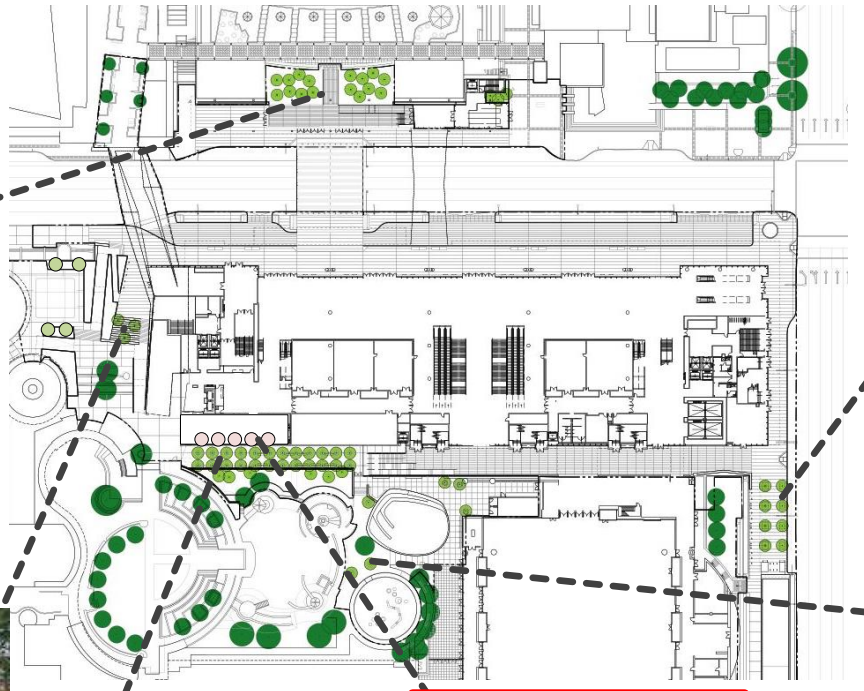




# PLANTING - TREES



Birch Grove at North Terrace  
*Betula utilis* 'var. *jaquemontii*'  
*Betula pendula*



Brisbane Box *Lophostemon confertus*



Maidenhair Tree  
*Ginkgo biloba*



Raywood Ash at Allee  
*Fraxinus angustifolia* 'Raywood'



*Acer palmatum* at Level 2 Terrace

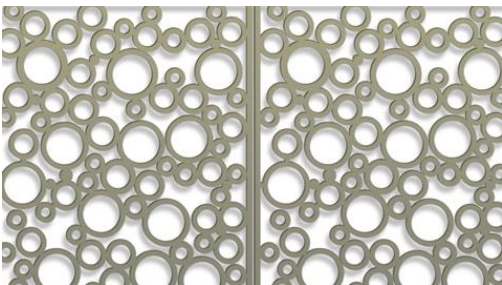


Sycamore (to match existing at Children's Garden)  
*Platanus acerfolia* 'Columbia'





CHILDREN'S GARDEN



BOK Modern – Fence – B17 Pattern



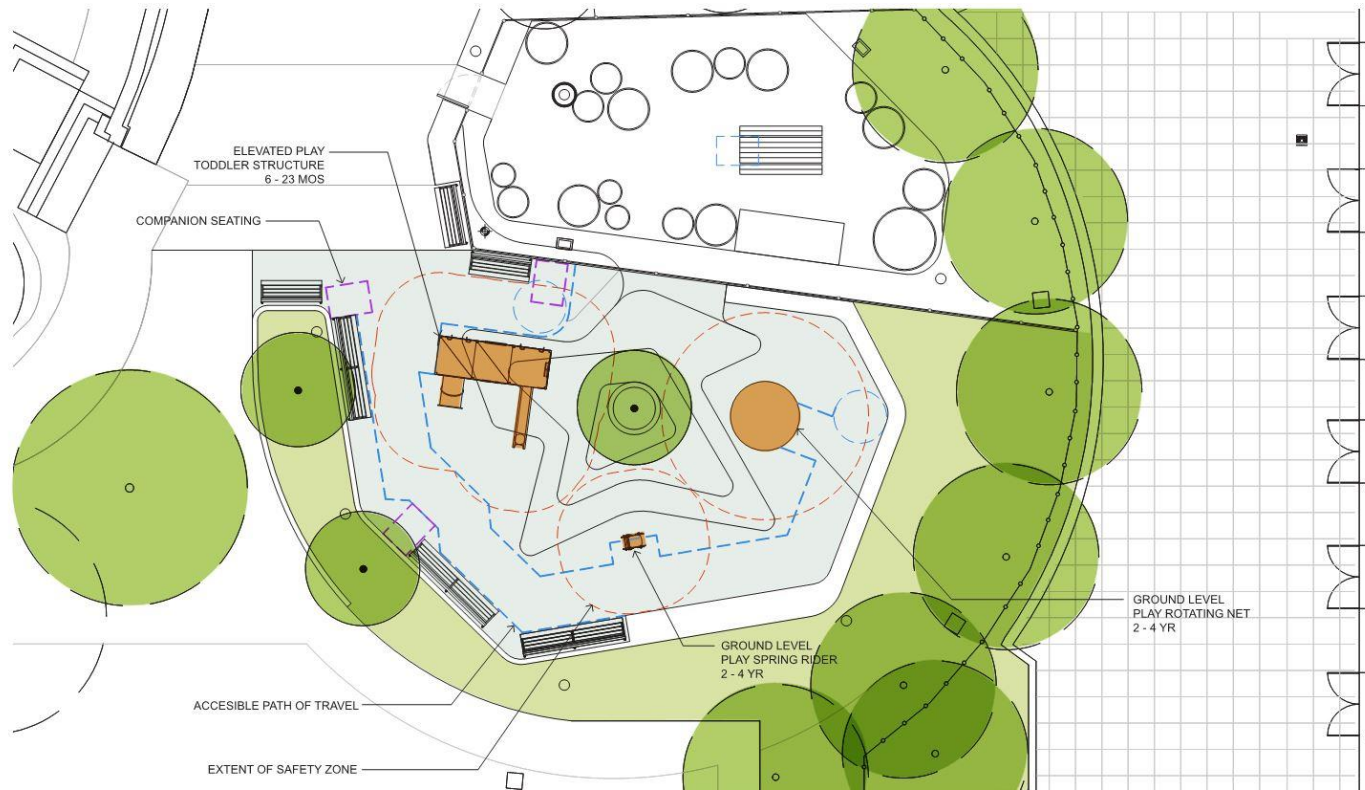
Landscape Forms – Neoliviano Bench



TimberForm – Picnic Table



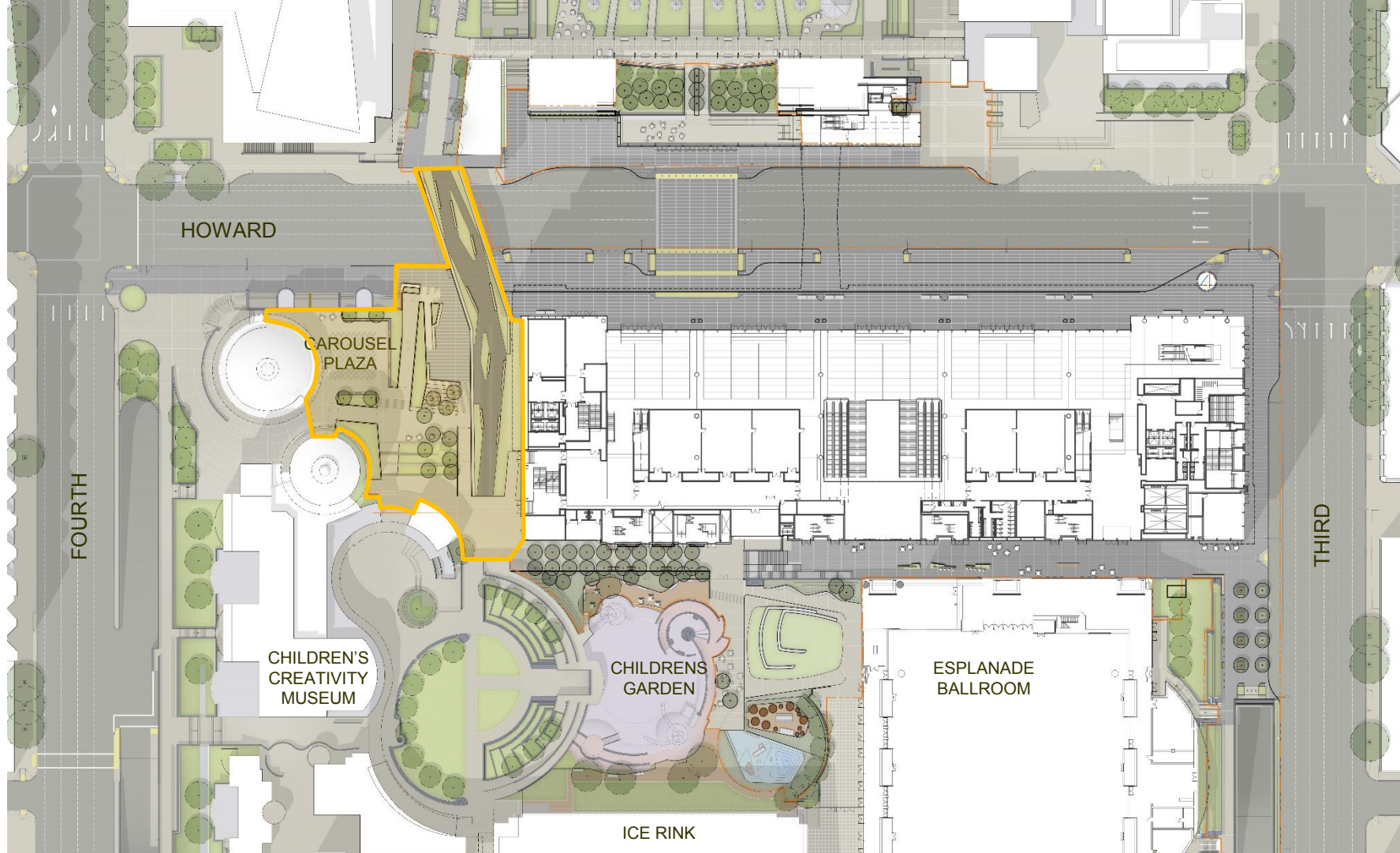
Stock Tank Planters



PLAN - TODDLER PLAYGROUND







HOWARD

CAROUSEL  
PLAZA

FOURTH

CHILDREN'S  
CREATIVITY  
MUSEUM

CHILDRENS  
GARDEN

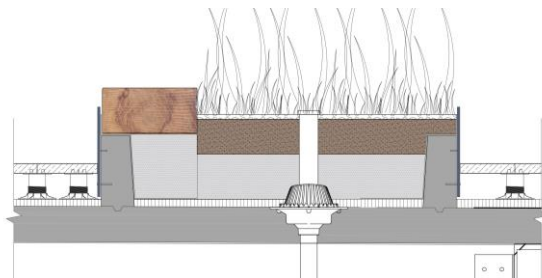
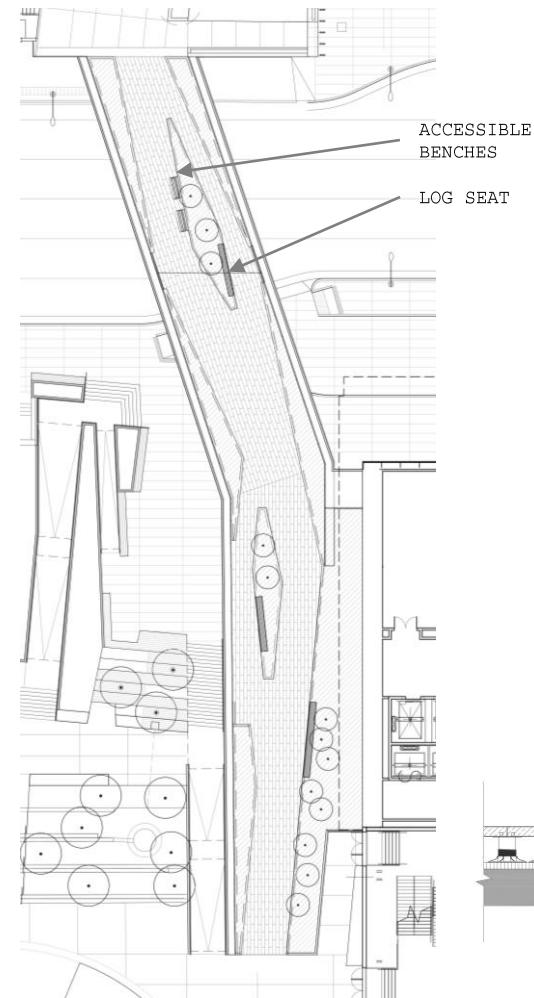
ICE RINK

ESPLANADE  
BALLROOM

THIRD



WEST BRIDGE



Milled Log in Planter



Eucalyptus Milled Log



Landscape Forms – Neoliviano Bench





*Senecio serpens*



*Agave 'Blue Glow'*



*Agave victoria-reginae*



*Imperata cylindrica 'Red Baron'*



*Aloe vera*



*Anigozanthos*



*Yucca whipplei*



*Dracaena draco*

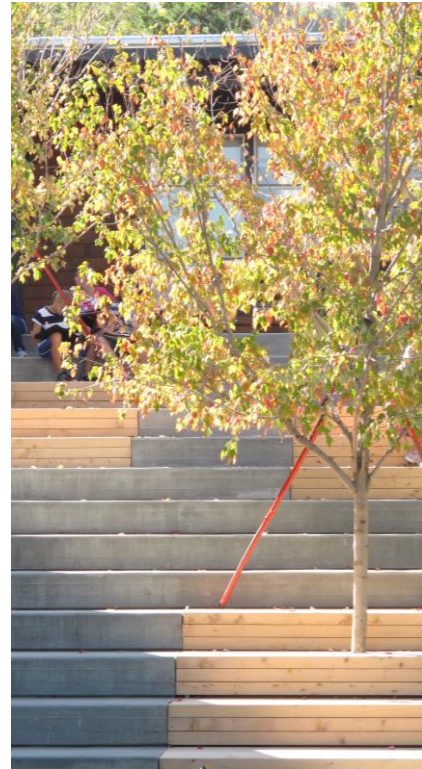




Hardwood Bench with Skate Deterrents



Board Form Concrete and Wood Steps







*Protea cynaroides*



*Leucadendron 'Safari Sunset'*



*Leucospermum 'Veldfire'*



*Grevillea juniperina 'Molonglo'*



*Leucospermum catherinae*



## CLIENT TEAM

Moscone Expansion District  
City and County of San Francisco  
City Administrator Office  
Public Works  
Convention Facilities

## DESIGN TEAM

Skidmore, Owings & Merrill LLP  
Mark Cavagnero Associates  
TEECOM  
Sherwood Design Engineers  
Parsons Brinckerhoff  
Rolf Jensen & Associates  
Conventional Wisdom  
Cumming Corporation  
Lerch Bates  
Cini-Little

CMG Landscape Architecture  
WSP  
Built Ecology  
Integral Group  
Horton Lees Brogden L  
Lerch Bates  
Ajmani & Pamidi  
Tipping Mar  
SOHA Engineers  
Nelson / Nygaard

## CONSTRUCTION TEAM

Webcor Builders  
Southland Industries  
Rosendin Electric  
Cosco Fire Protection  
Enclos  
SME Steel  
RLS  
Modulus Consulting

THANK YOU

An architectural rendering of a modern building's entrance. The scene is viewed through a series of vertical glass panels. In the foreground, a woman with a pink bag and a man in a white shirt are walking. The middle ground shows a large, open atrium with people walking on different levels. The background features a multi-story building with a grid-like facade and a green roof. The overall atmosphere is bright and modern.