



Temporary MUNI Yard

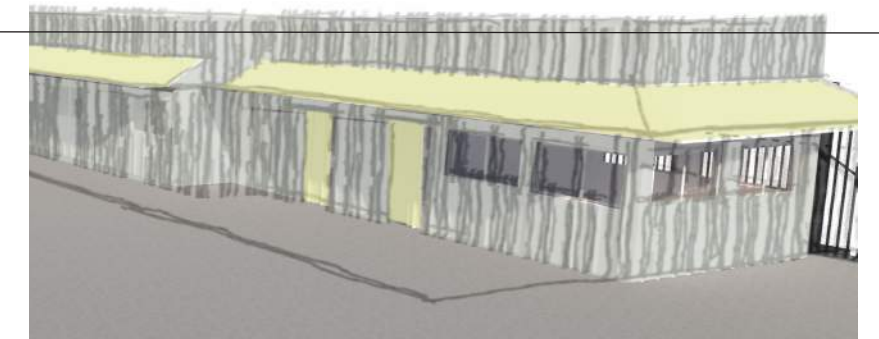
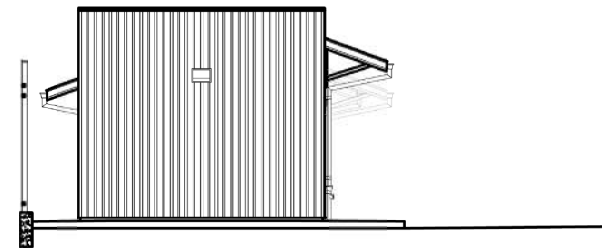
- bus charging/parking lot
- bus wash, fare collection, and storage
- employee facilities



CDR PHASE 2 COMMENTS:

- SPACE IN BUS YARD LOOKED TIGHT
- TEAM SHOULD REVIEW AWNINGS TO FIT CONTEXT. SUGGESTED TO BE MORE HORIZONTAL
- CAN ART ENRICHMENT FUND BE USED ON SITE INSTEAD OF ELSEWHERE - - - - -
- AGREED WITH BRIGHT COLOR INCORPORATIONS
- LOOKED FORWARD TO LEARNING MORE ABOUT LANDSCAPE

DESIGN TEAM CONSULTED WITH PUBLIC ART DIRECTOR WHO BROUGHT UP TOPIC TO VISUAL ARTS COMMITTEE ON JUNE 16TH. RECOMMENDED THAT FUND BE USED IN A MORE APPROPRIATE PROJECT WITH A PUBLIC INTERFACE.

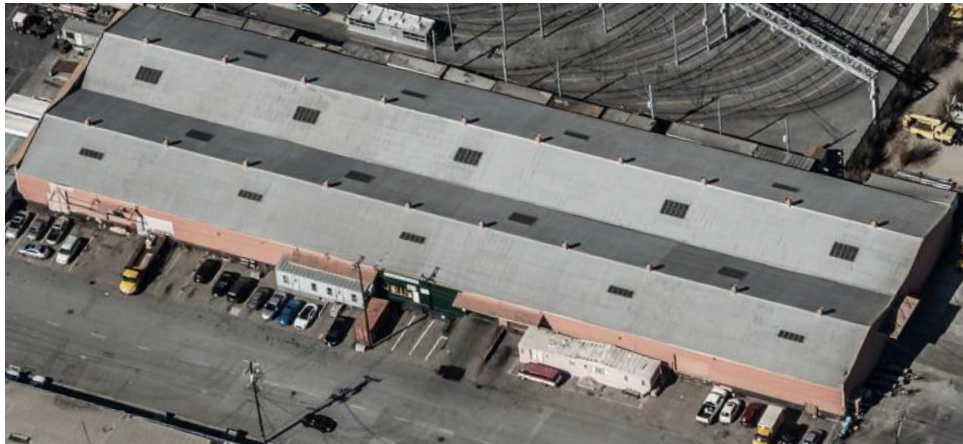


PREVIOUSLY PROPOSED - AWNING & COLOR

PROJECT CONTEXT



1. Navigation Center



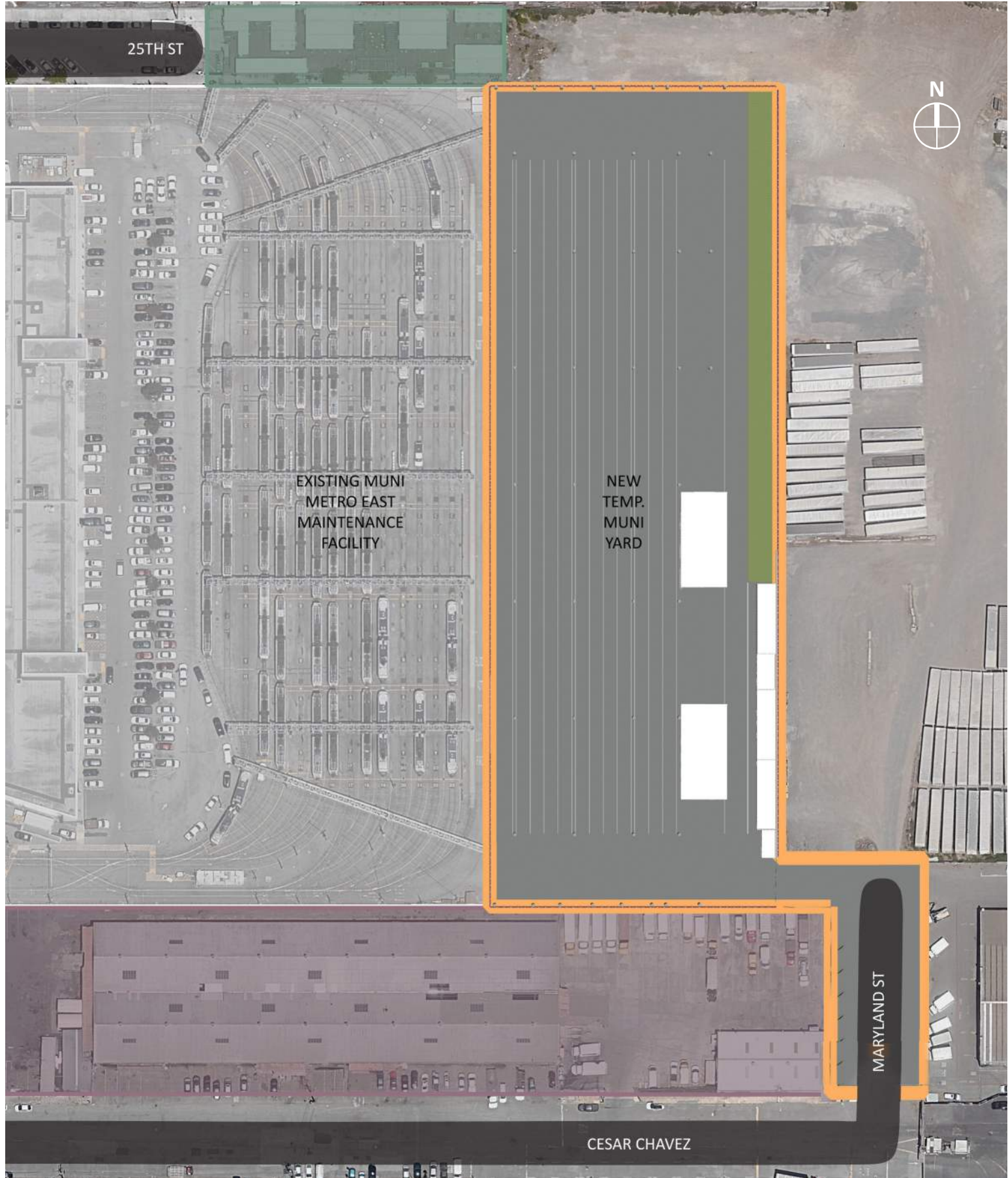
2. Warehouse



3. Commercial



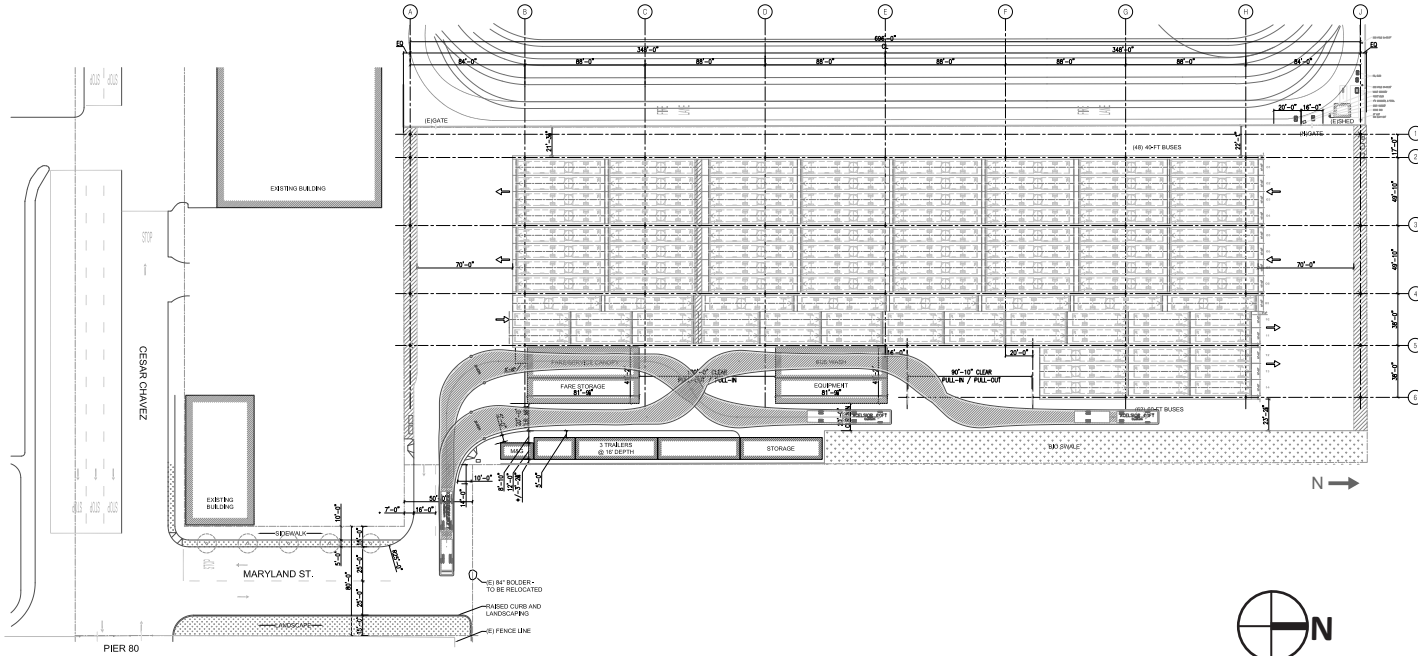
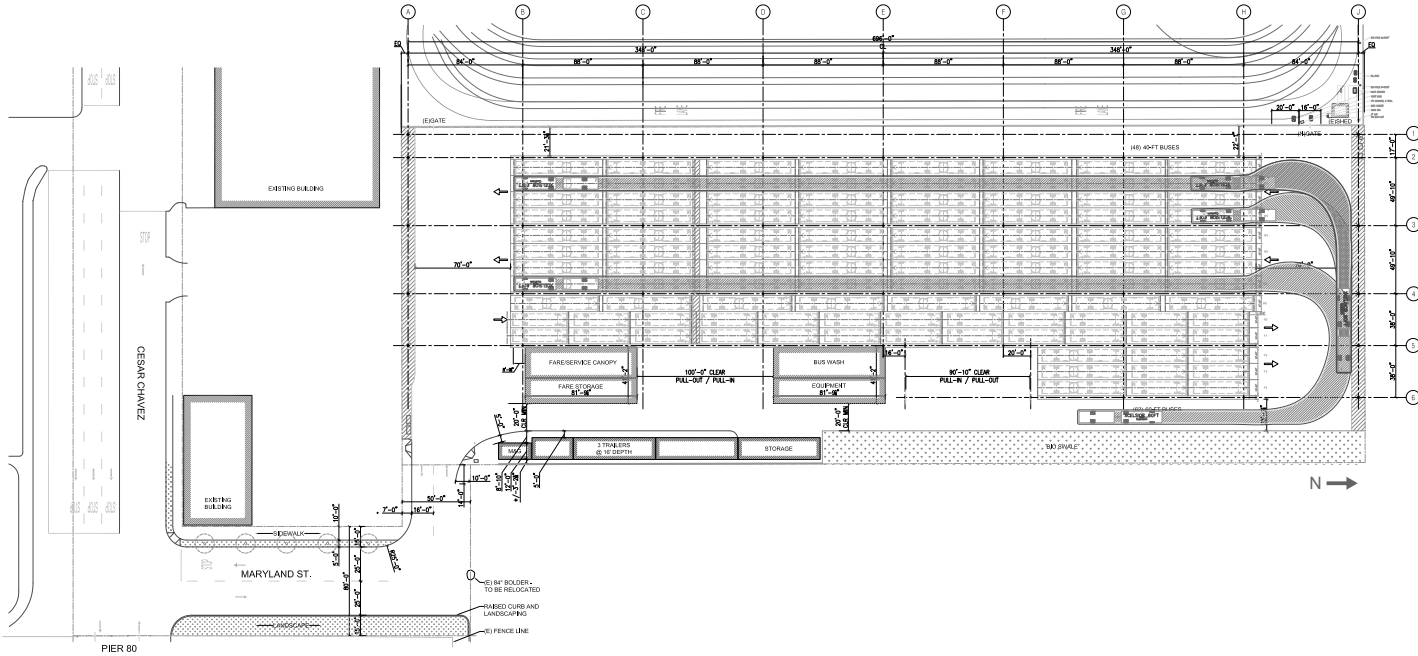
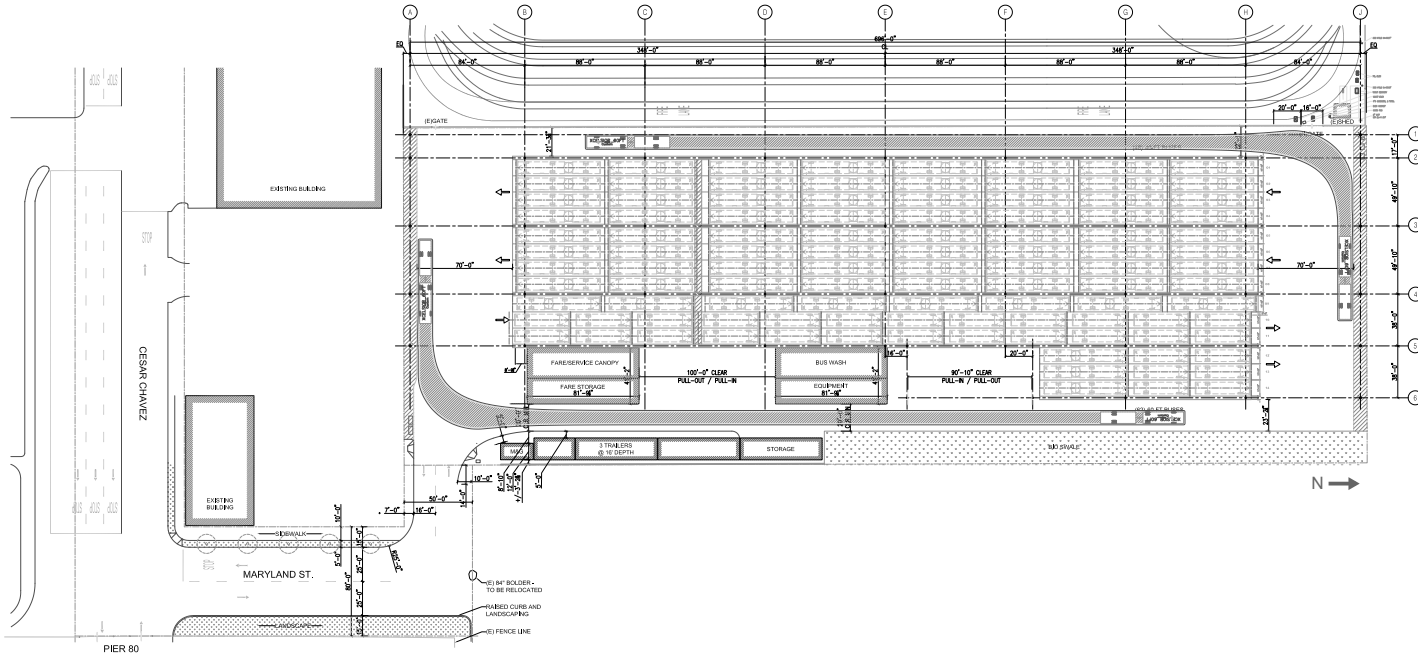
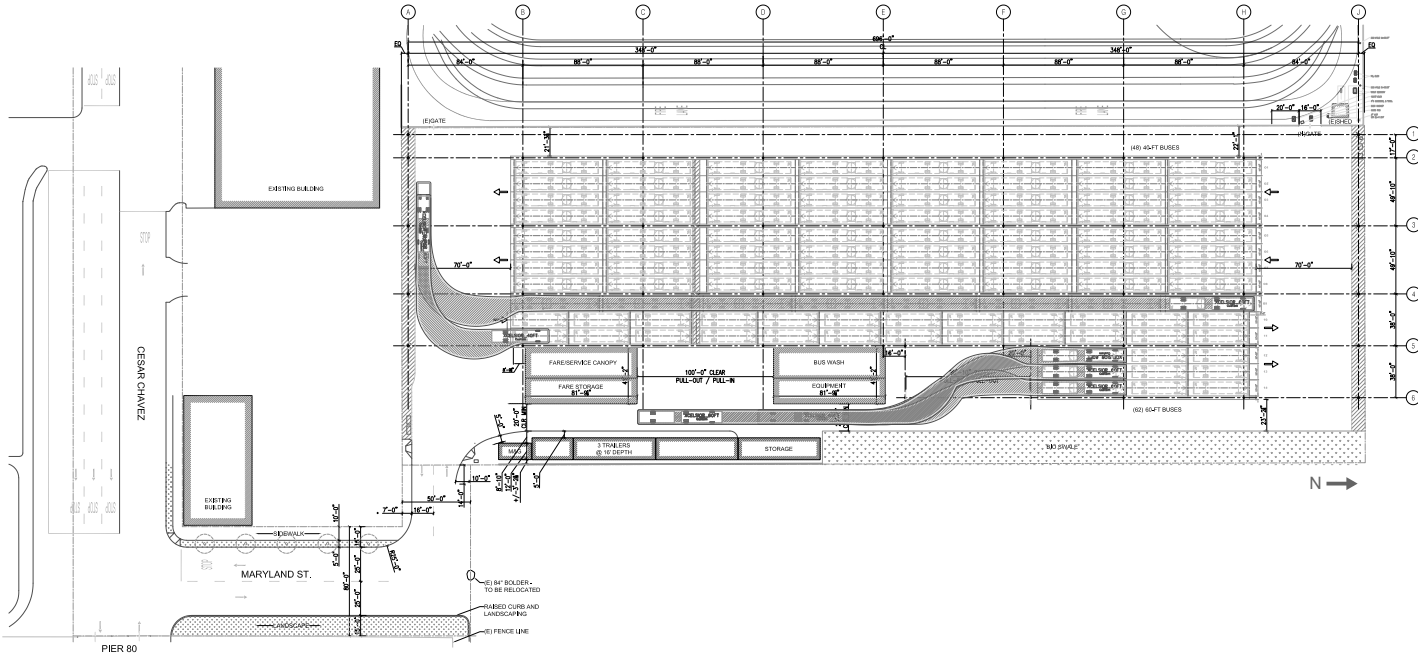
EXISTING SITE CONDITIONS



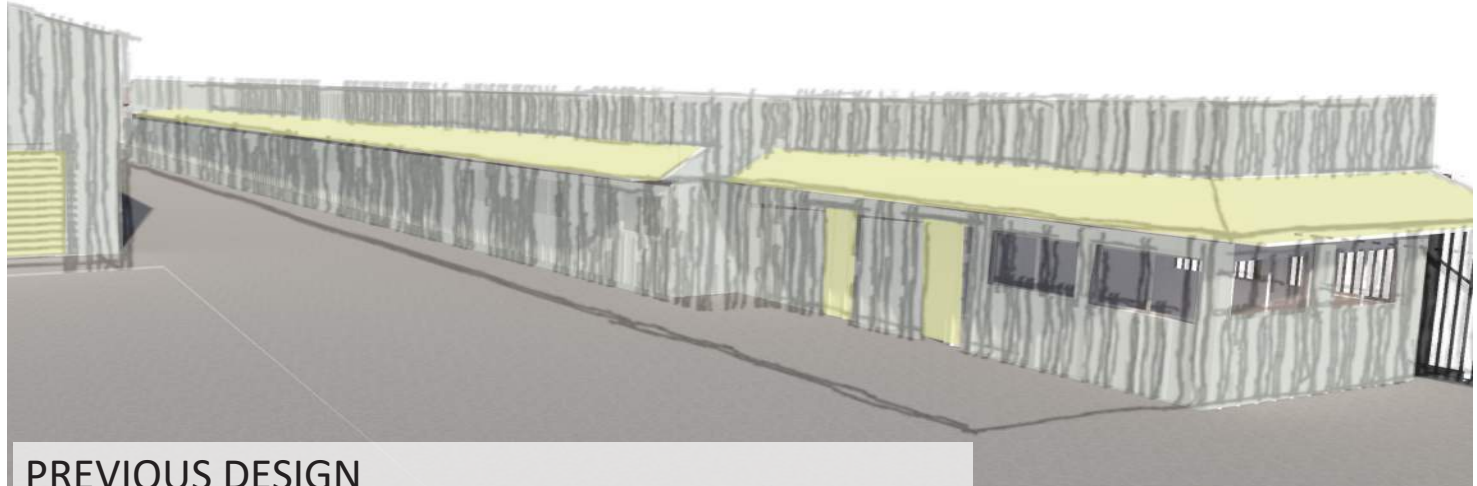
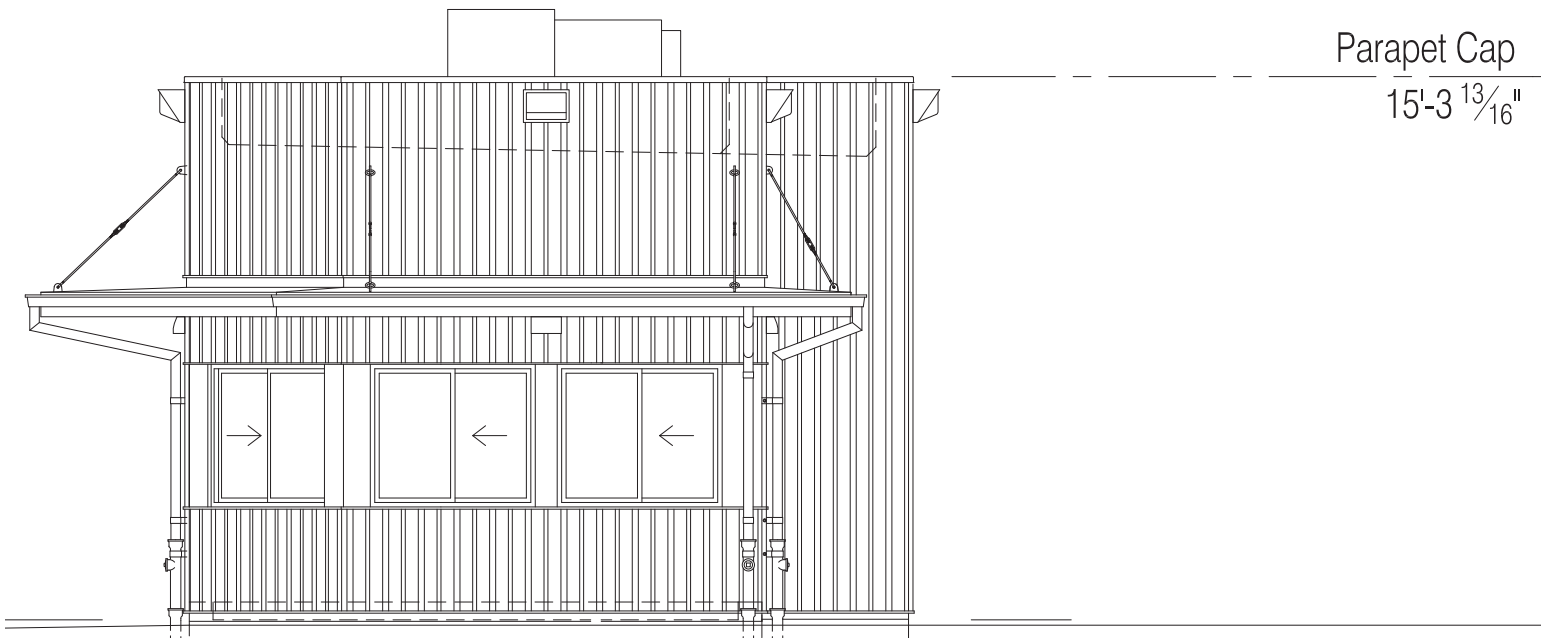
PROPOSED SITE DESIGN



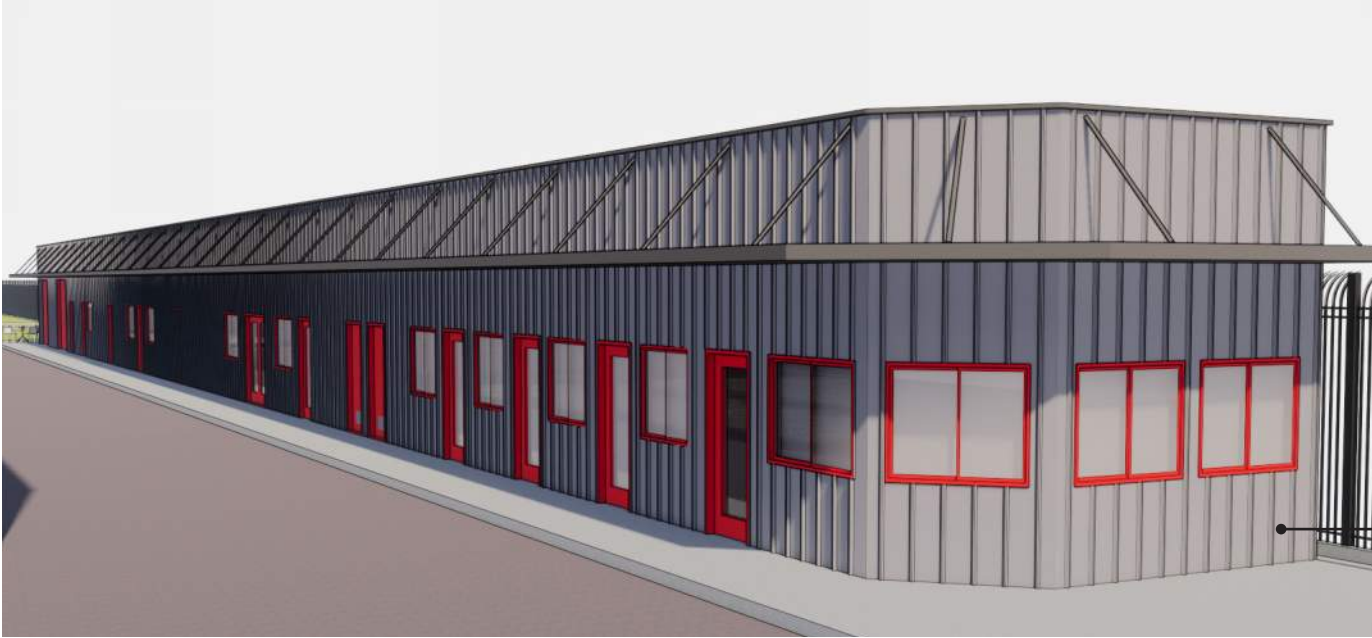
PROPOSED SITE DESIGN- TURNING STUDIES



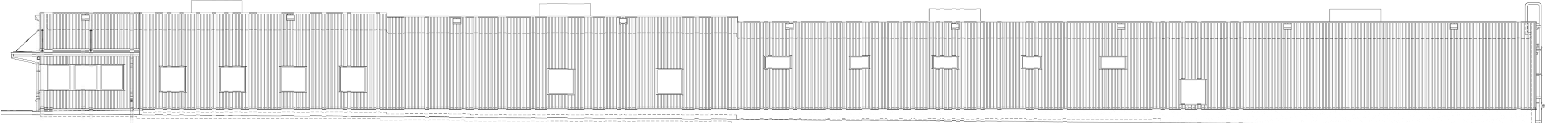
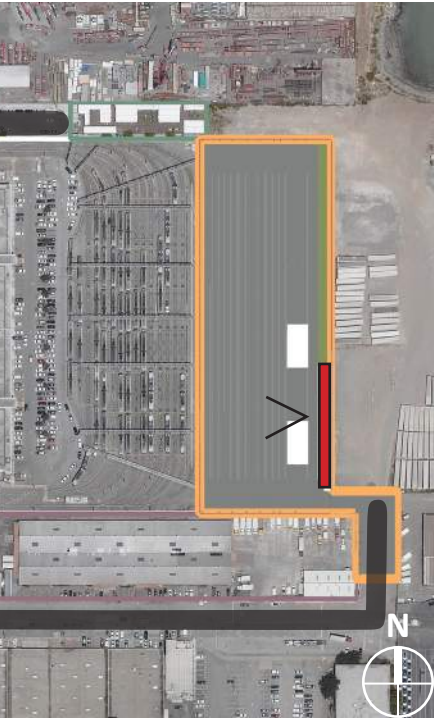
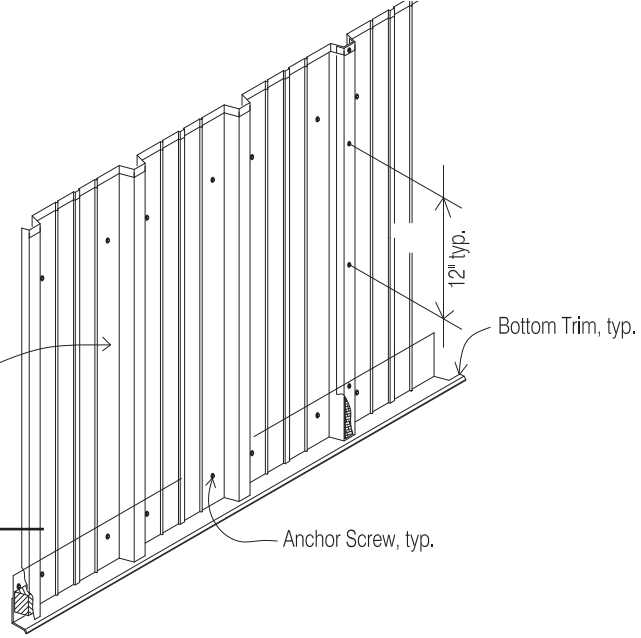
NEW PROPOSED AWNING



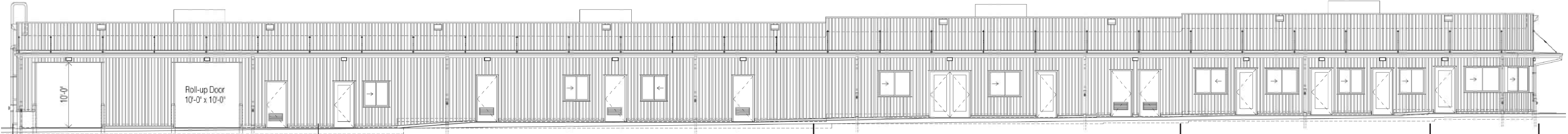
OPERATIONS BUILDING



.05 inch Aluminum Siding,
w/ Factory Prime Paint Only for Exterior Panels
& Factory "Kynar" Paint Fin. for Exterior Panels
Applied o/ Building Paper (Tyvek or App. Eq.)
o/ 5/8" DensGlass' Sheathing, typ.



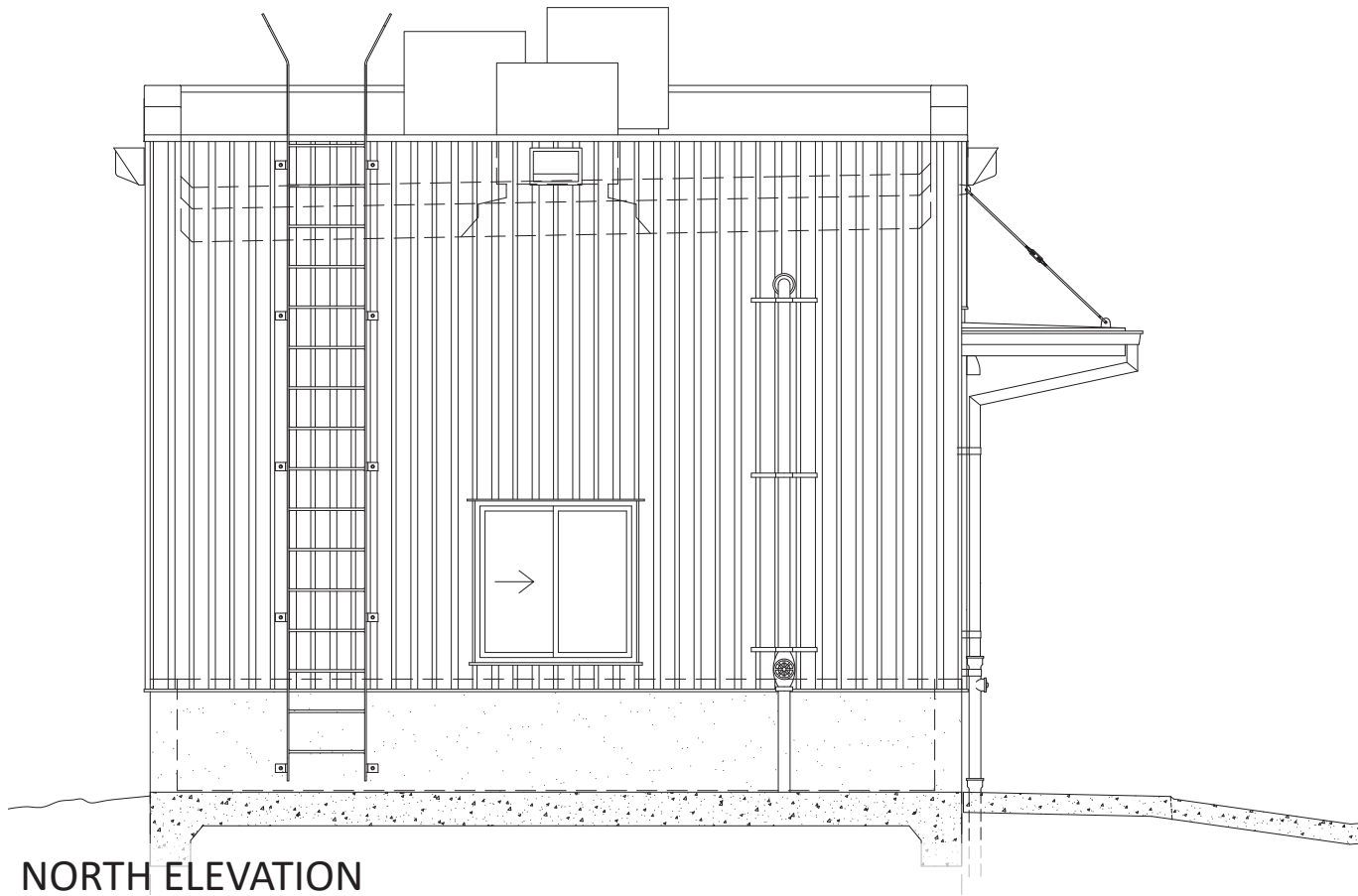
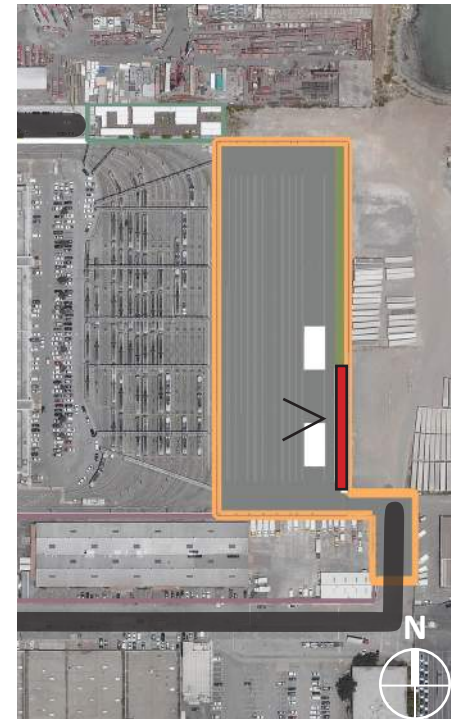
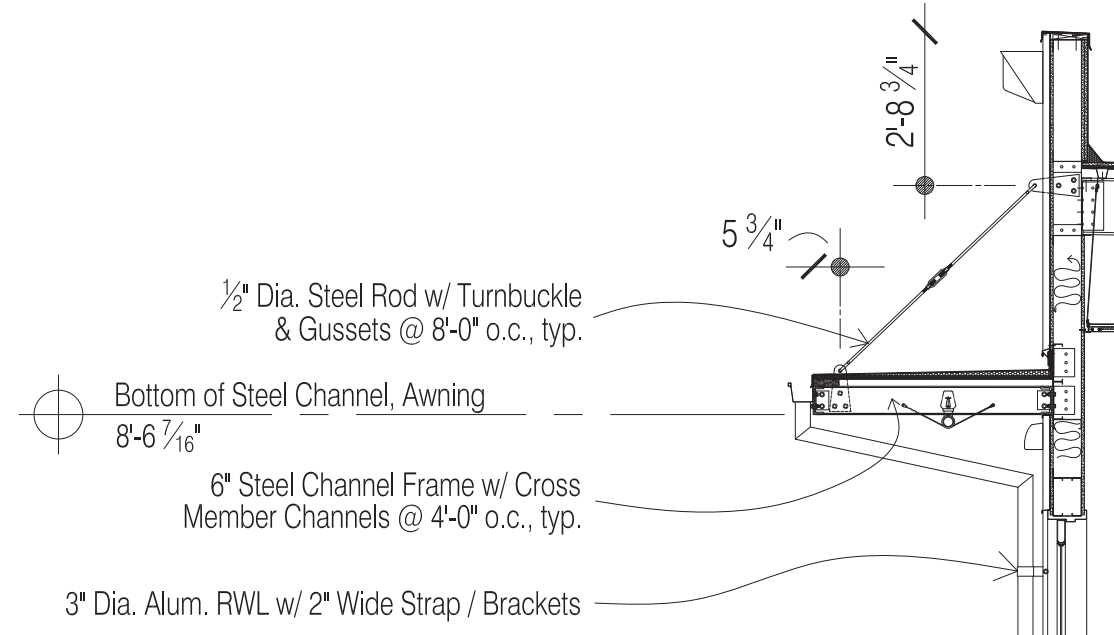
EAST ELEVATION



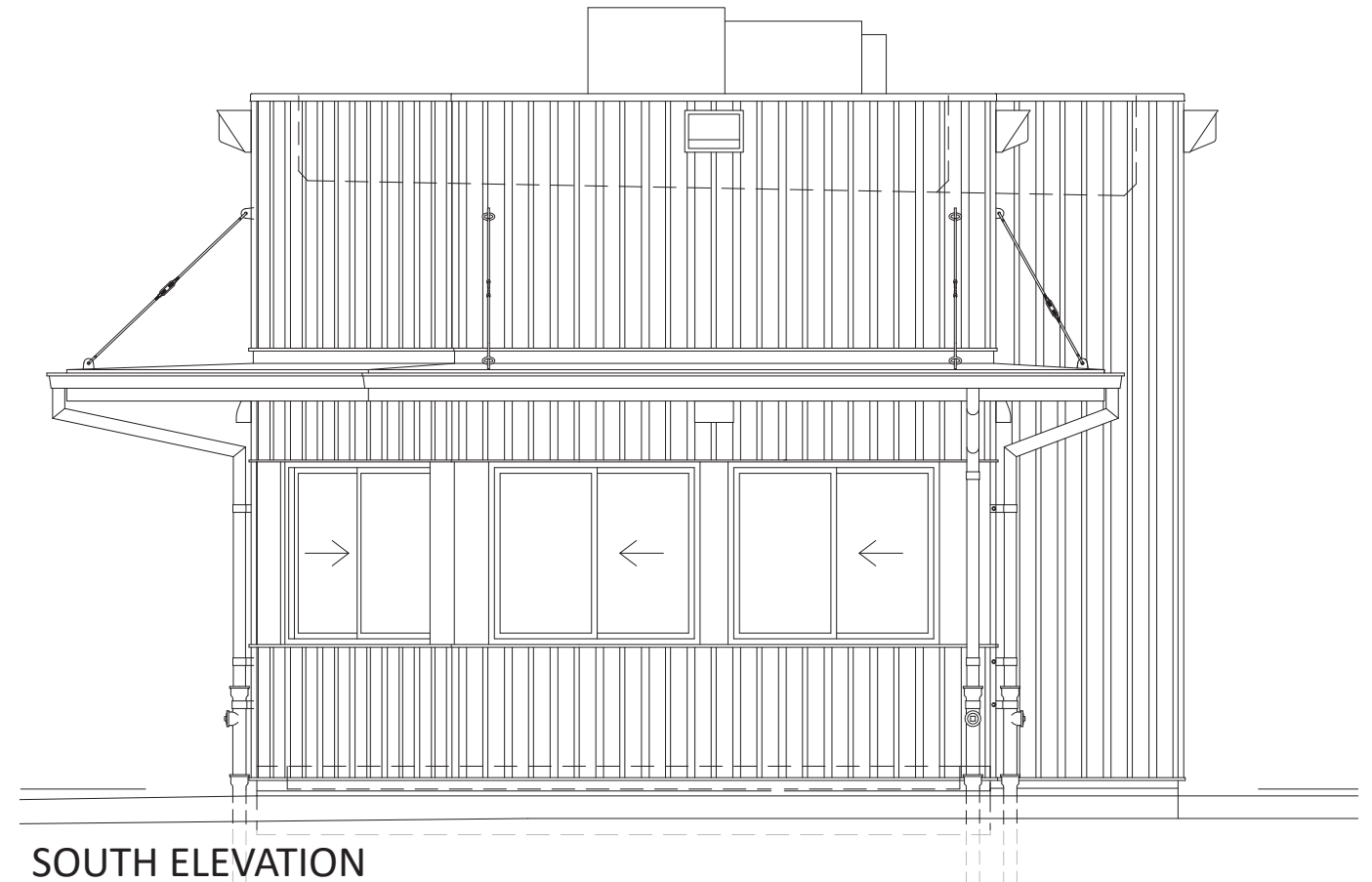
EQUIPMENT & MATERIAL STORAGE LOCKERS & RESTROOMS BREAK/CONFERENCE FLEX ROOM OFFICES MEET & GREET

WEST ELEVATION

OPERATIONS BUILDING

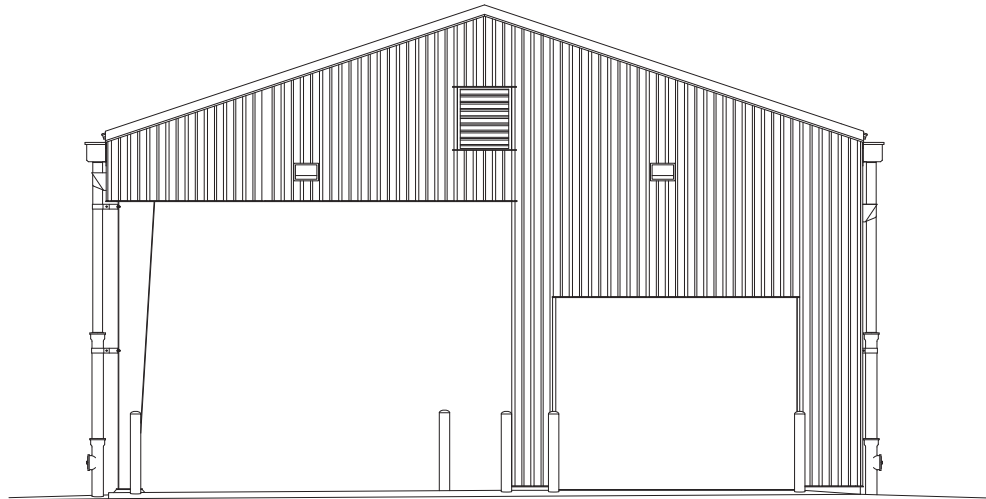
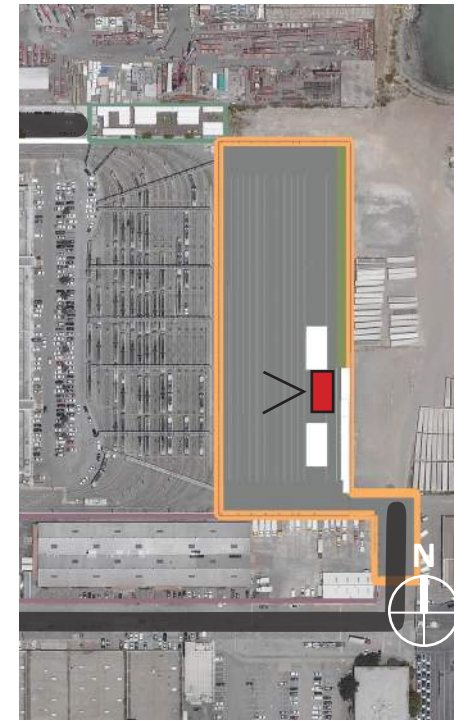


NORTH ELEVATION

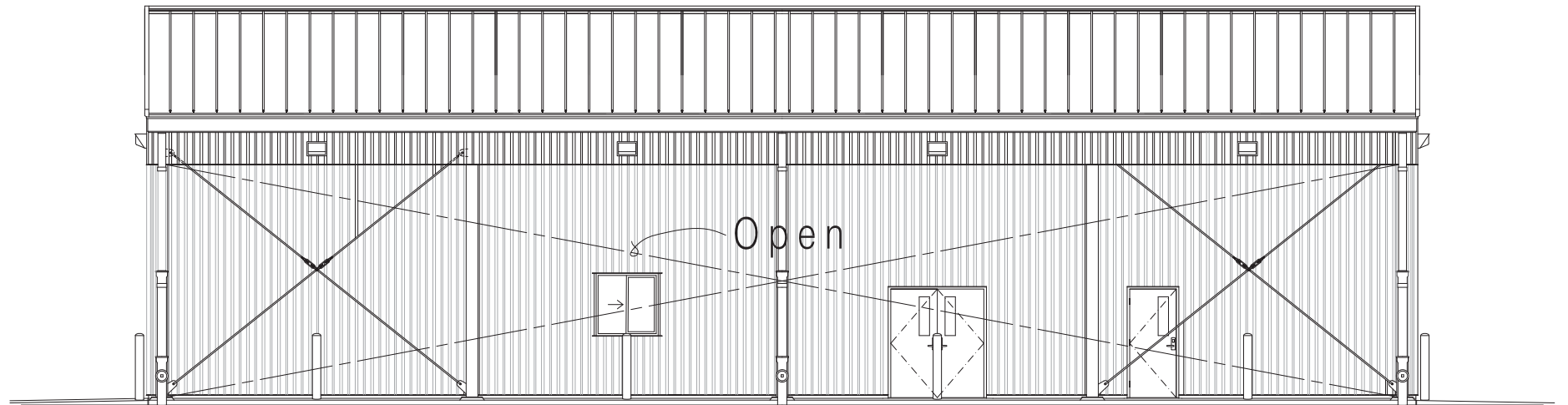


SOUTH ELEVATION

FARE COLLECTIONS BUILDING



SOUTH ELEVATION

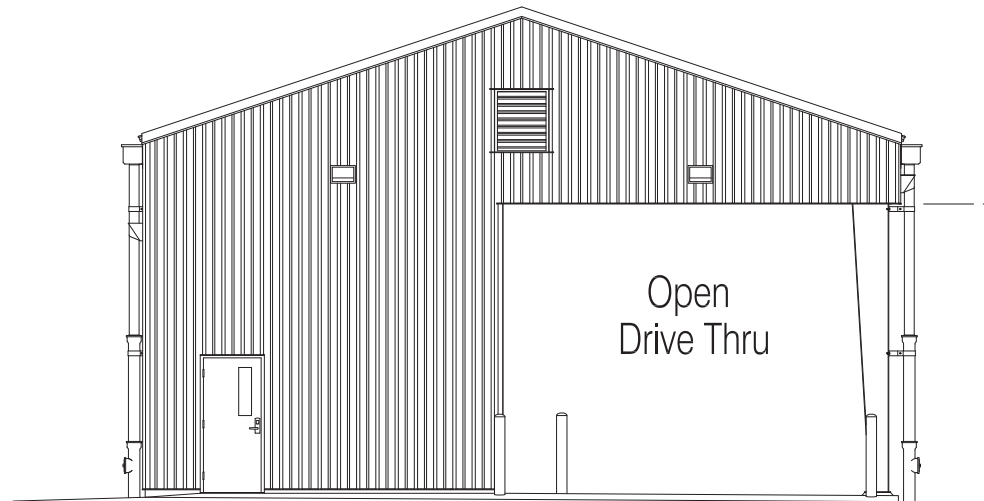
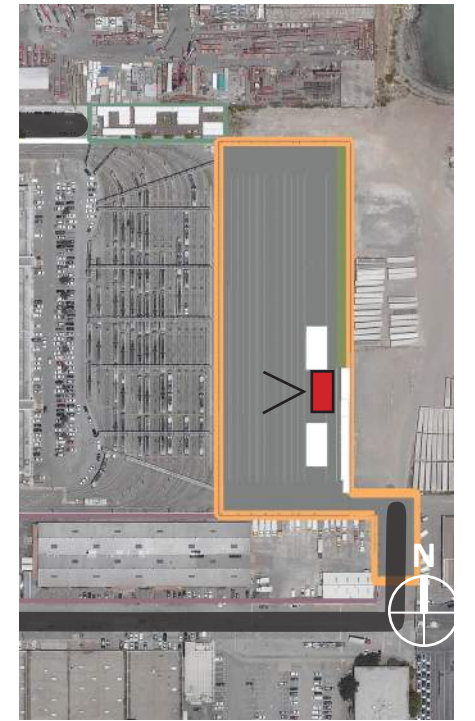


WEST ELEVATION

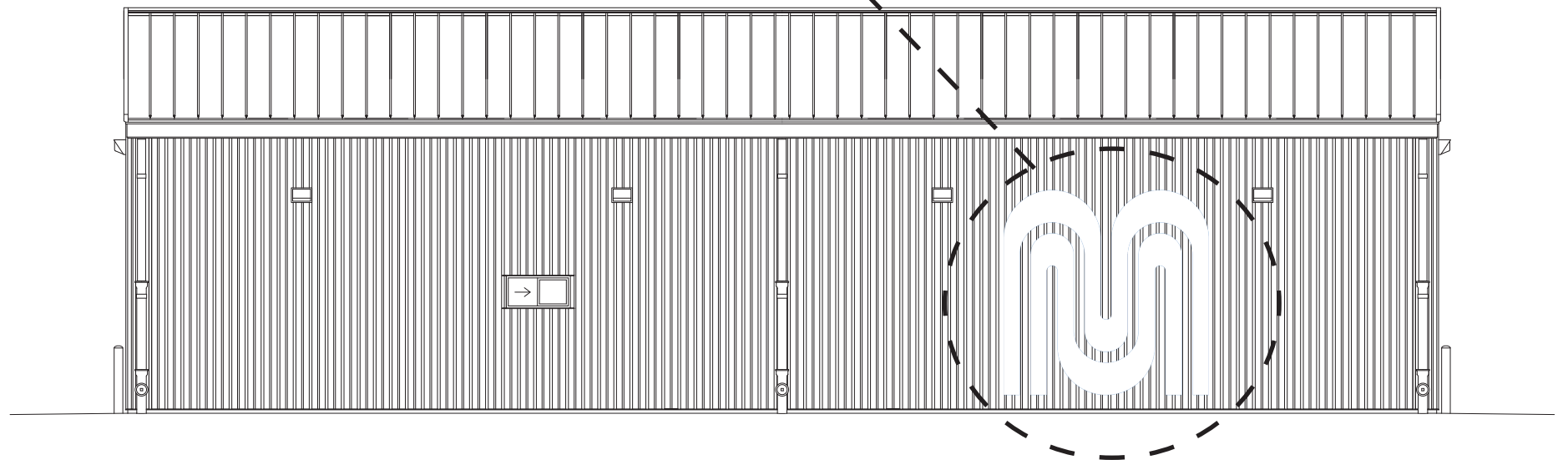
FARE COLLECTIONS BUILDING



SFMTA POSSIBLE LOGO LOCATION ON FARE COLLECTION BUILDING, COLOR TBD.

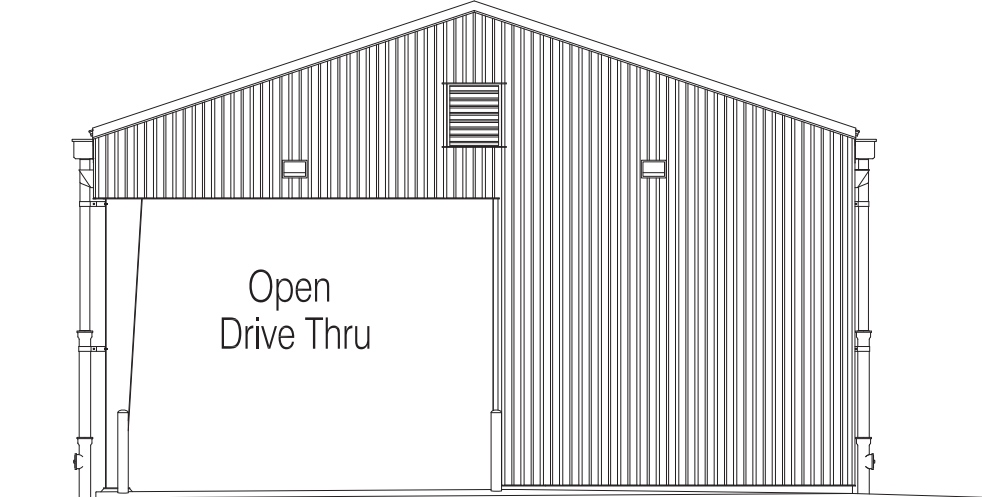
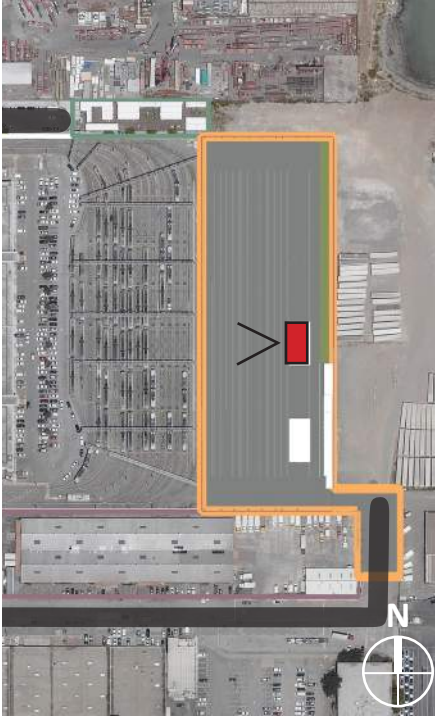


NORTH ELEVATION

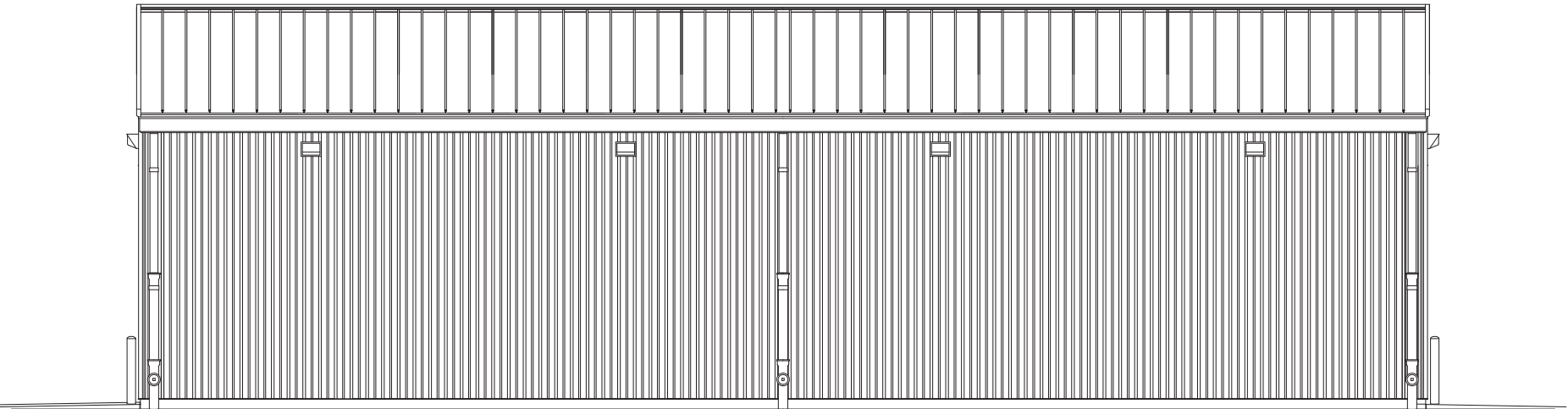


EAST ELEVATION

BUS WASH BUILDING

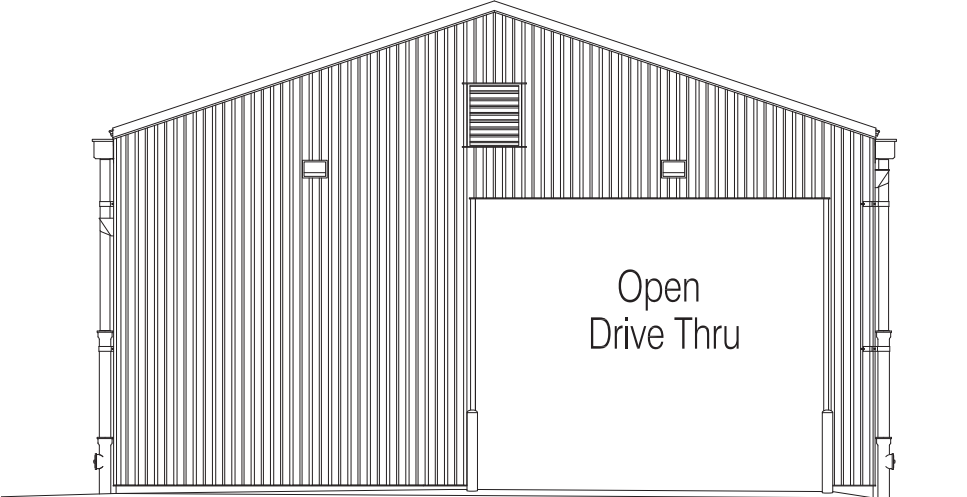
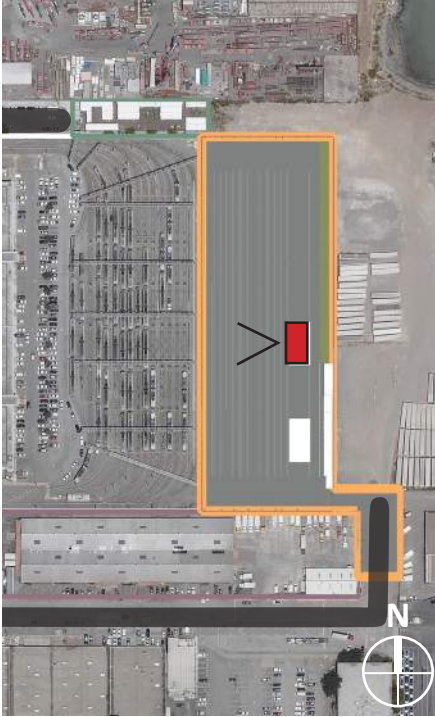


SOUTH ELEVATION

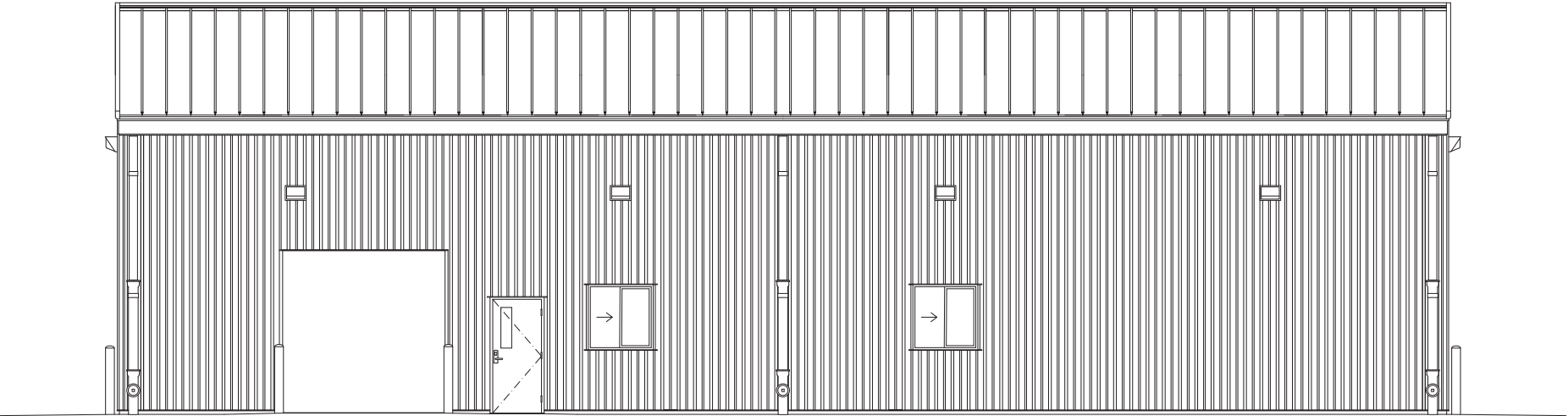


WEST ELEVATION

BUS WASH BUILDING



NORTH ELEVATION



EAST ELEVATION

SFMTA BRAND COLORS

Sticking with a specific set of colors - and reproducing them faithfully - is a powerful way to help visually identify the SFMTA brand.

When selecting colors for SFMTA branded materials, only use the SFMTA brand colors.














Our agency has 13 brand colors that complement each other, most with origins in the Muni palette. These colors can be reproduced across different print and digital media. They can also be distinguished from each other by those in our community who are color blind.

To keep our colors consistent, use the Pantone + color bridge matching system. Whether using a printer, a computer screen, or even paint/plastic pigments and fabrics, this will allow our brand colors to stay consistent, no matter the medium.

Each color has a name for easy referral, as well as Pantone +, CMYK, sRGB and HTML color numbers.

SFMTA requires our partners and vendors to match these Pantone color numbers.

All SFMTA brand artwork and templates downloaded from the Corporate Identity section of [inside.SFMTA.com](https://inside.sfmta.com) have the brand colors embedded into files and the application's swatch panel.

Name	Pantone+ Color Bridge	HTML/Hex	sRGB	CMYK
SFMTA Blue	 285 CP	2B74B7	43 116 183	90 48 0 0
SFMTA Graphite	 7540 CP	525657	82 86 87	41 28 22 70
White	 Page White	FFFFFF	255 255 255	0 0 0 0
Black	 Black CP	2F2C27	47 44 39	60 52 53 69
SFMTA Red	 200 CP	BF2B45	191 43 69	3 100 70 12
SFMTA Gold	 1375 CP	E99C34	233 156 52	0 45 94 0
SFMTA Green	 348 CP	008F4C	0 143 76	96 2 100 12
SFMTA Purple	 254 CP	942D83	148 45 131	48 96 0 0
SFMTA Light Gray	 Cool Gray 9 CP	7A7B7E	122 123 126	30 22 17 57
Heritage Brown	 1817 CP	683737	104 55 55	30 85 59 70
Heritage Orange	 131 CP	D0941F	208 148 31	2 39 100 10
Heritage Navy	 301 CP	005B95	0 91 149	100 53 4 19
Heritage Fog Blue	 549 CP	619EB7	97 158 183	56 8 9 21

CURRENT COLOR SCHEME & MATERIALS

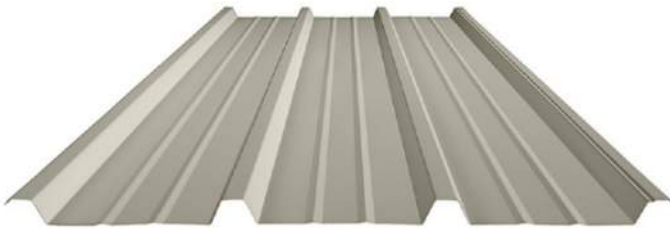
SFMTA Graphite



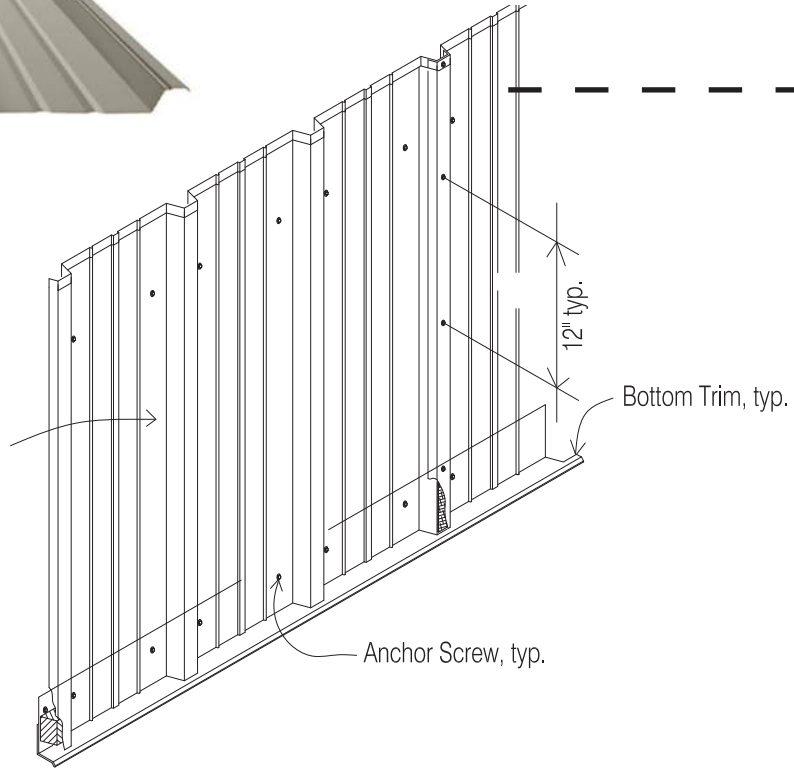
SFMTA Light Gray



SFMTA Red



.05 inch Aluminum Siding,
w/ Factory Prime Paint Only for Exterior Panels
& Factory "Kynar" Paint Fin. for Exterior Panels
Applied o/ Building Paper (Tyvek or App. Eq.)
o/ 5/8" DensGlass' Sheathing, typ.







HARDSCAPE OPTIONS

Security Fence

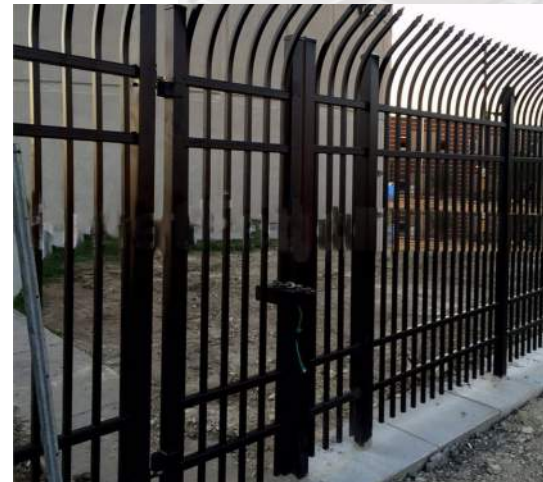


10' black iron picket fence with curved top / Will match adjacent fencing

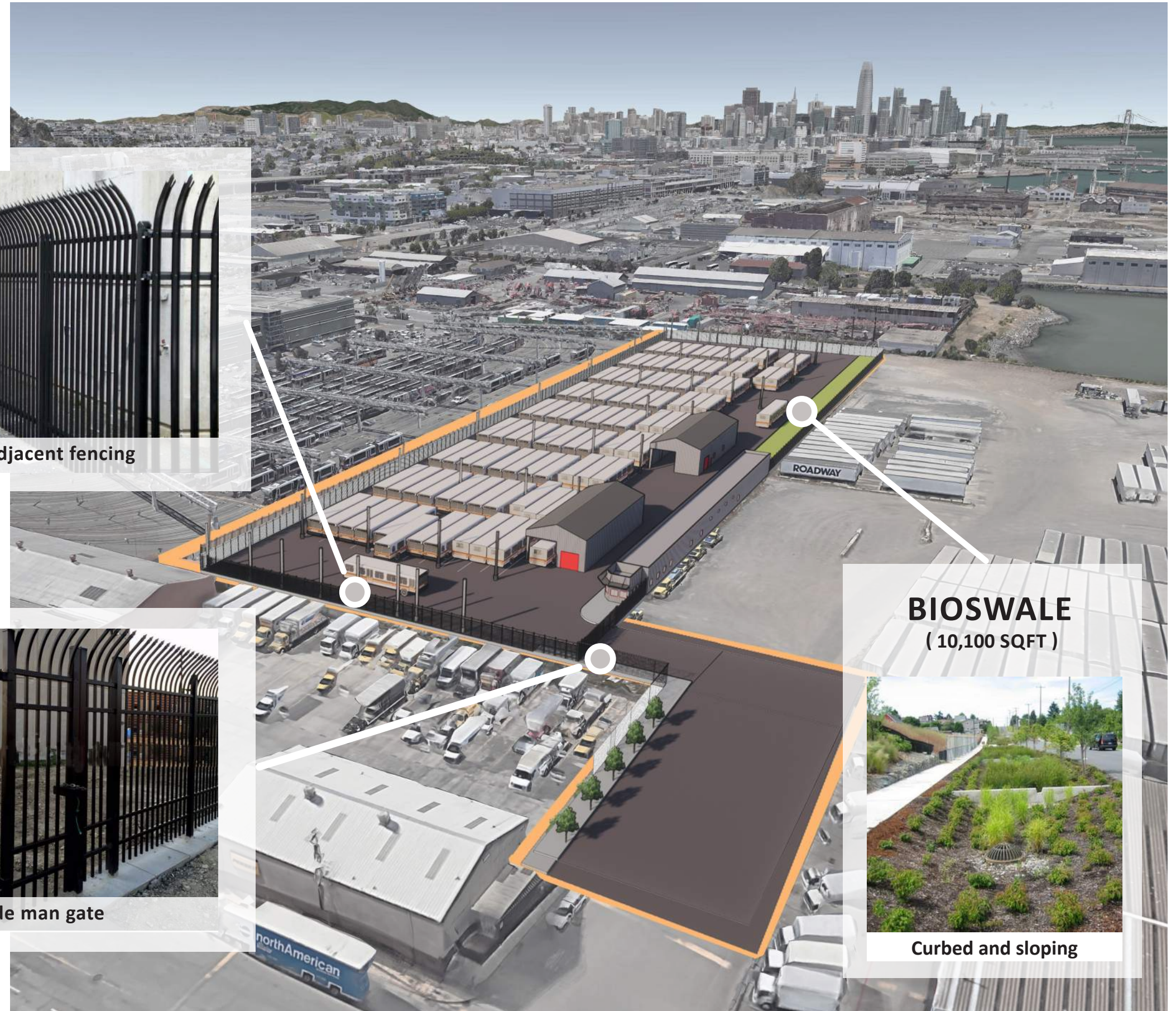
Automated Vehicular Gate + Man Gate



35' automated black iron picket vehicular gate



4' wide man gate



BIOSWALE
(10,100 SQFT)



Curbed and sloping

PLANTING

Being situated along the bay's edge, the planting palette will consist of natives to this unique habitat. These plants are also adapted to periods of inundation and drought and will thrive in the bioswale's conditions.



Bioswale Planting



ALKALI RAGWORT
Senecio hydrophilus



CALIFORNIA GOLDENROD
Solidago californica



MARSH ROSEMARY
Westringia fruticosa



PACIFIC NINEBARK
Physocarpus capitatus



SEASIDE DAISY
Erigeron glaucus



STICKY MONKEY FLOWER
Mimulus aurantiacus



COYOTE BUSH
Baccharis pilularis



JUNEGRASS
Koeleria macrantha



DUNE SEDGE
Carex praegracilis

Street Tree Planting



STRAWBERRY TREE
Arbutus x 'Marina'

ENTRY GATE AND FENCING

