



### Temporary MUNI Yard

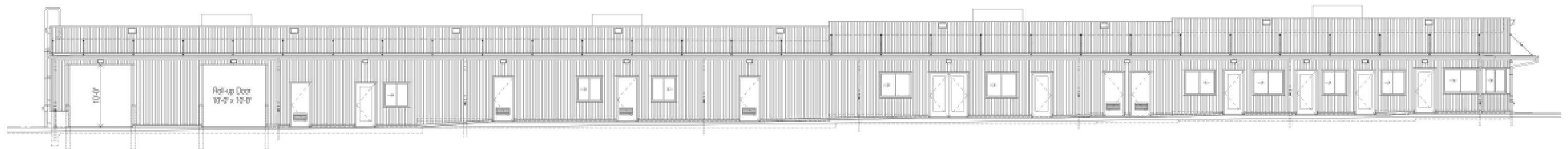
- bus charging/parking lot
- bus wash, fare collection, and storage
- employee facilities

# PROPOSED SITE DESIGN



## CDR PHASE 2 COMMENTS (06/21/21):

- COMMISSIONERS COMMENTED ON THE LENGTH OF THE OPERATIONS BUILDING AND ASKED HOW THE TEAM IS THINKING ABOUT **WAYFINDING** FOR SUCH A LARGE BUILDING.



PREVIOUSLY PROPOSED - OPERATIONS ELEVATION

# NEW PROPOSED OPERATIONS BUILDING - WAYFINDING STUDIES



**Study 1** -Painted icons and text over aluminum panels

Client **did not** like the feeling of icons & text.



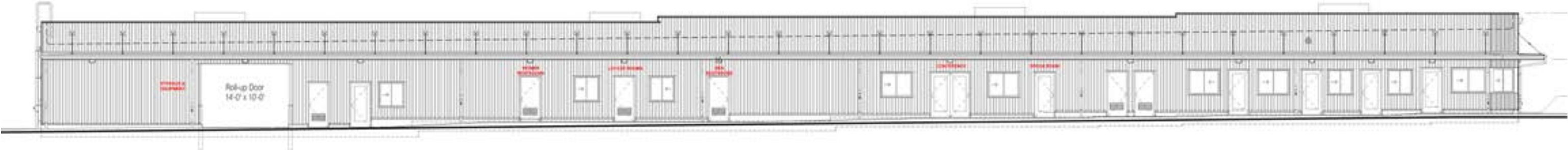
**Study 2** -Painted text over aluminum panels

Client **preferred** simple text without icons- icons may come later as MTA discusses possibilities.



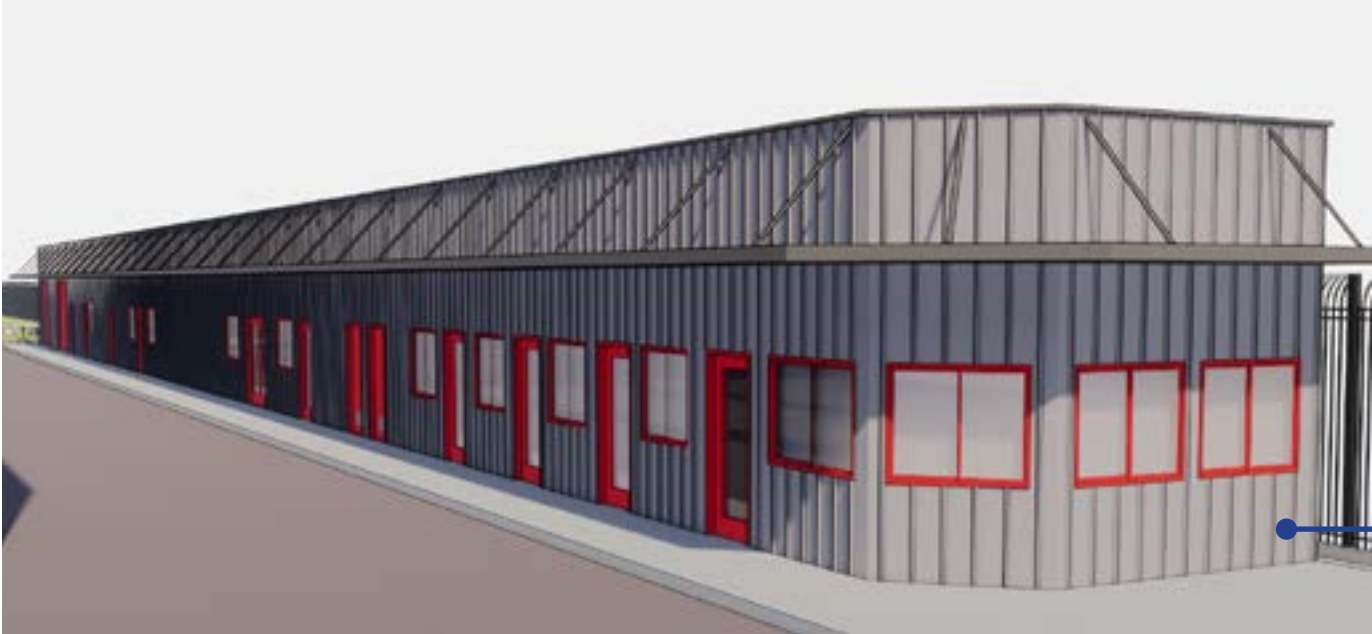
**Study 3** -typical wayfinding used by MTA

TBD, which wayfinding icons are appropriate on site

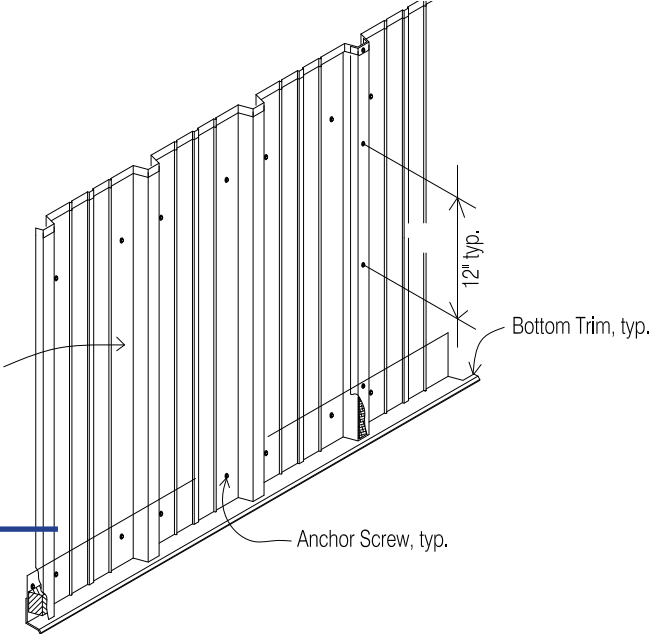


WEST ELEVATION

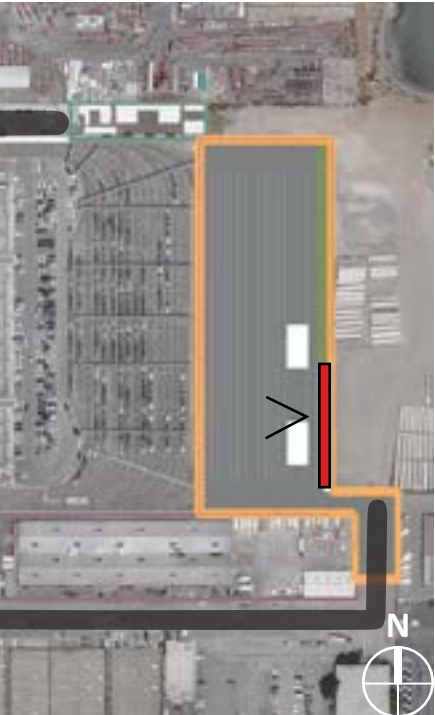
# OPERATIONS BUILDING-CONT'D



PERSPECTIVE OF WEST ELEVATION

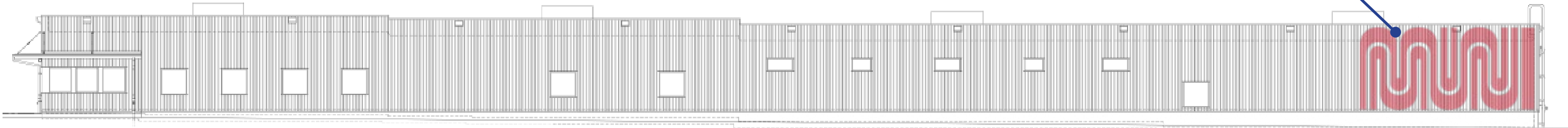


Aluminum Siding



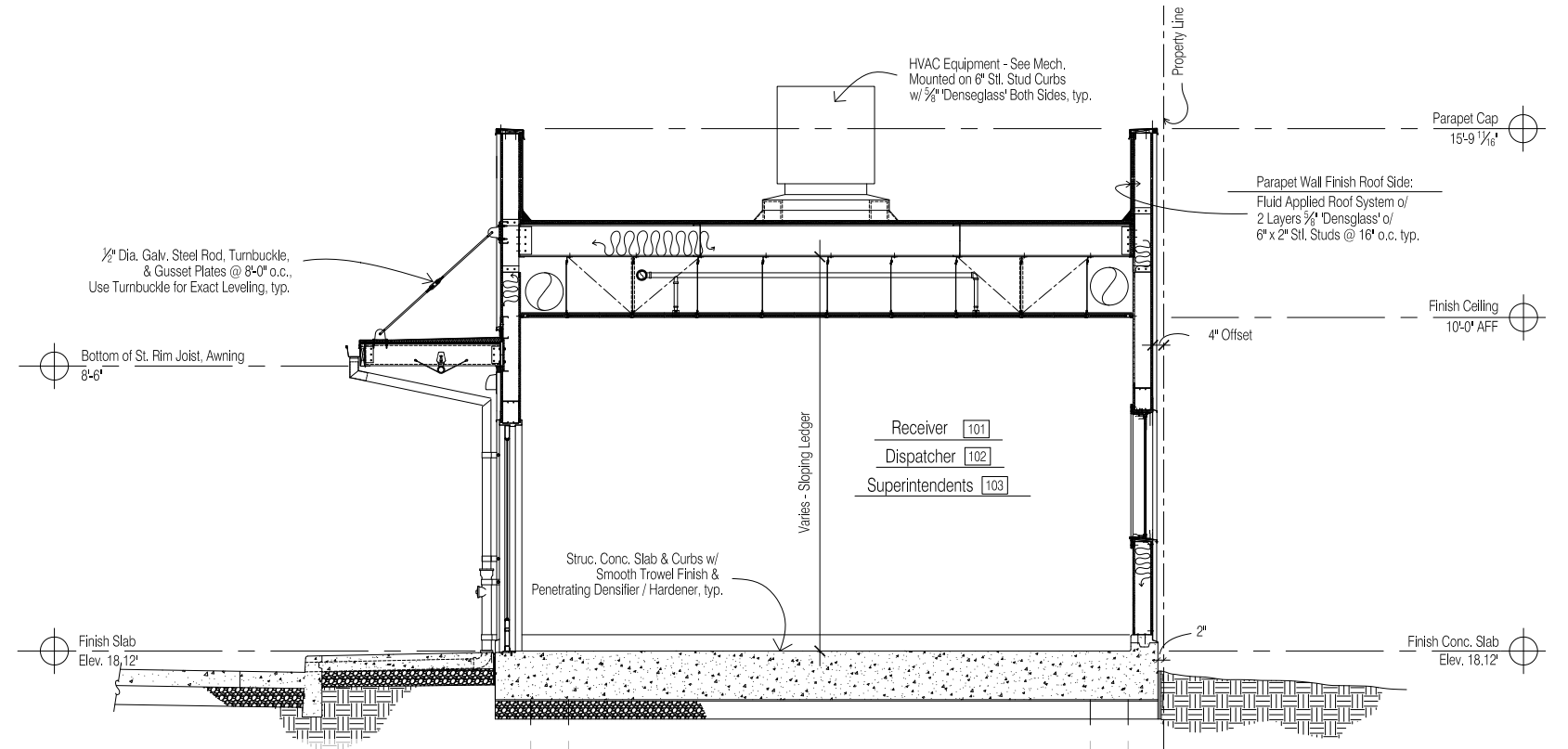
PERSPECTIVE OF EAST ELEVATION

Painted MTA Logo

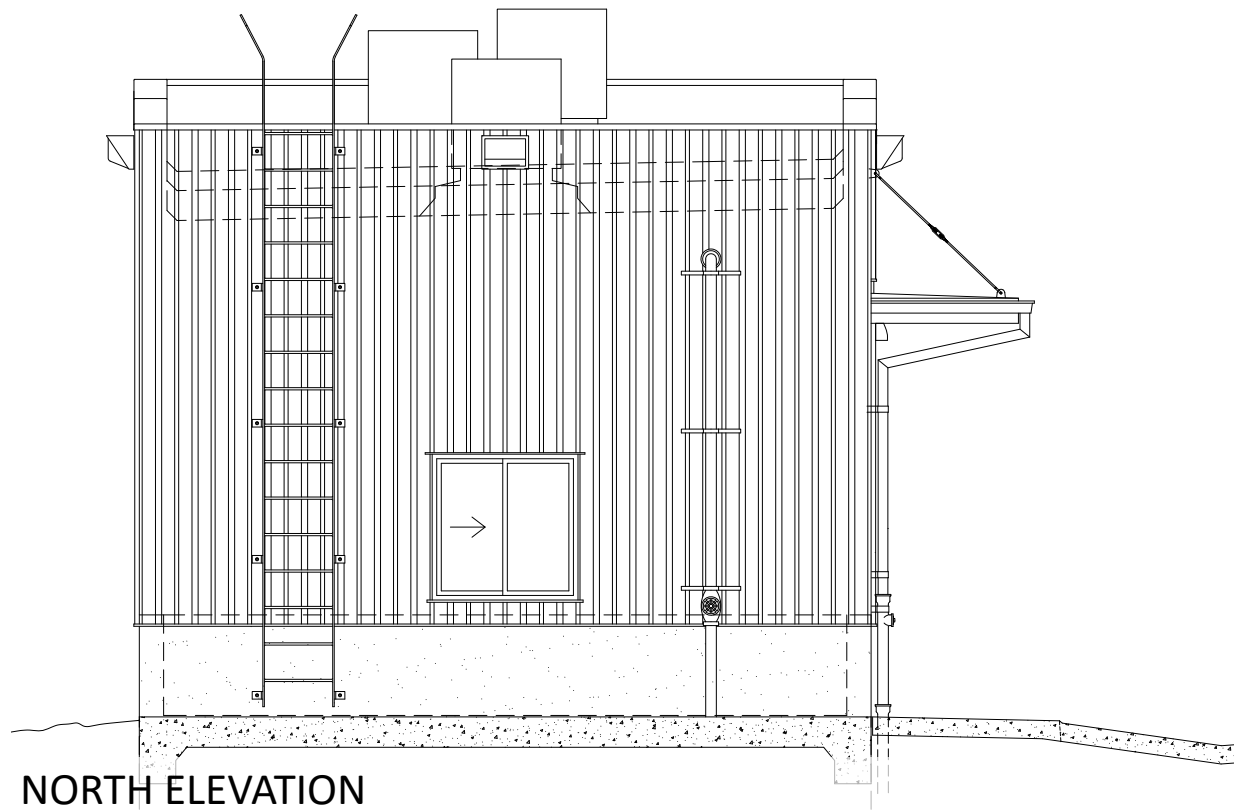


EAST ELEVATION

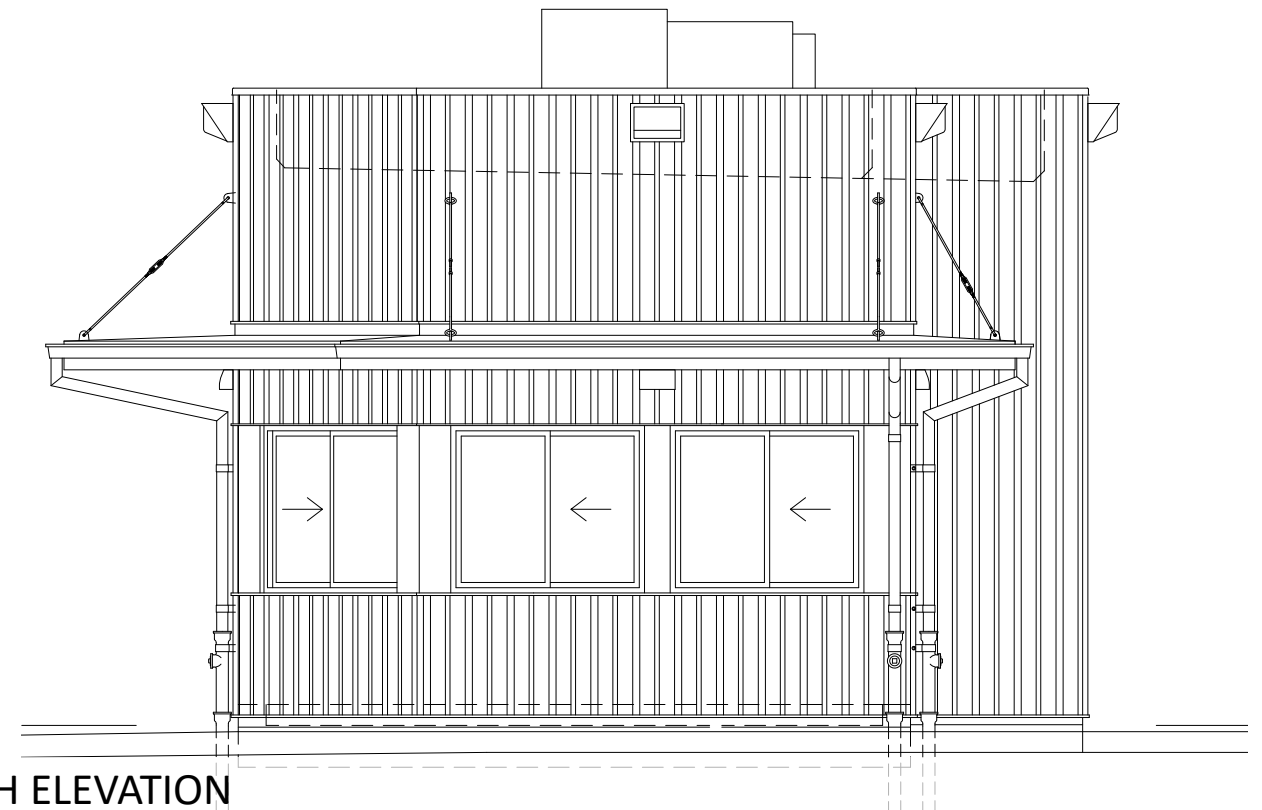
# OPERATIONS BUILDING-CONT'D



TYP. SECTION THRU OPERATION - LOOKING NORTH



NORTH ELEVATION

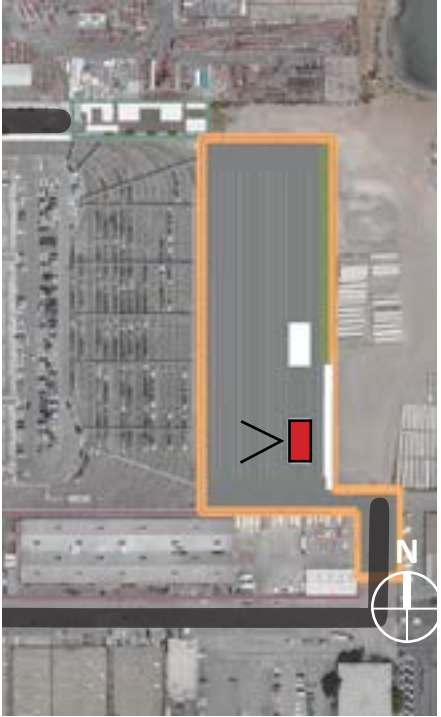


SOUTH ELEVATION

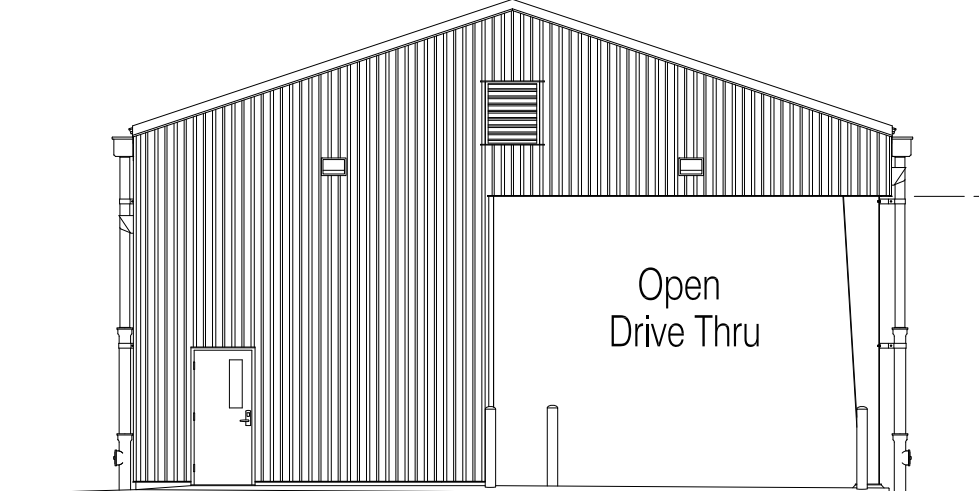
# FARE COLLECTIONS BUILDING



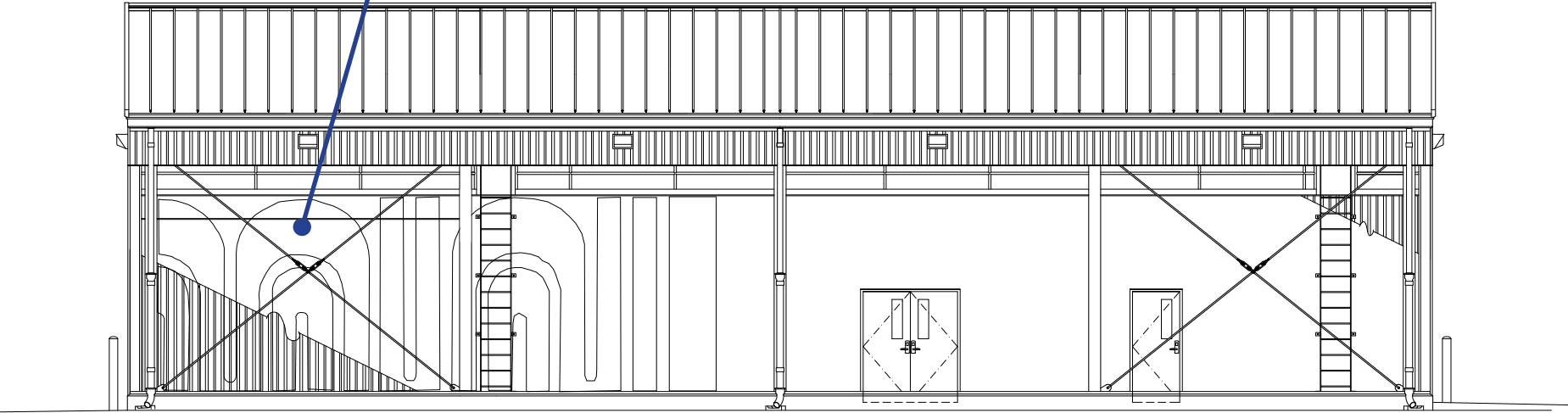
Painted MTA Logo



Open Drive Thru

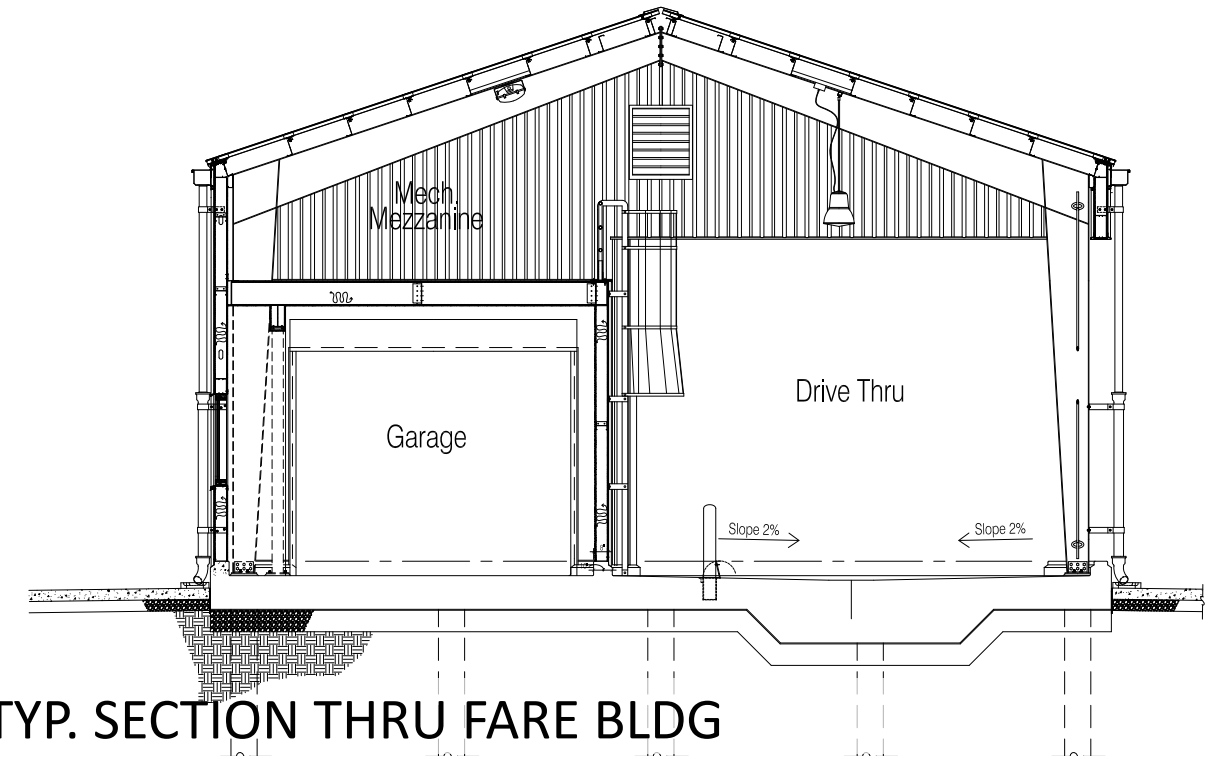


NORTH ELEVATION

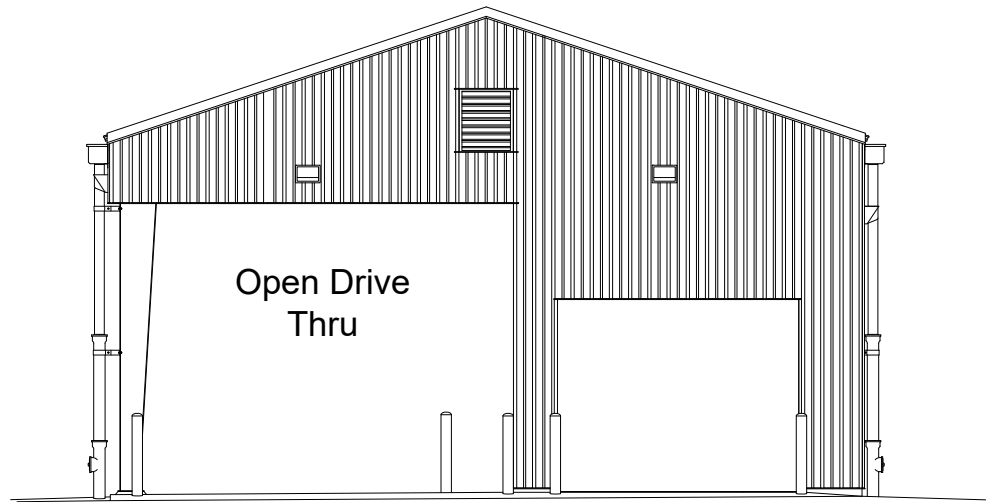


WEST ELEVATION

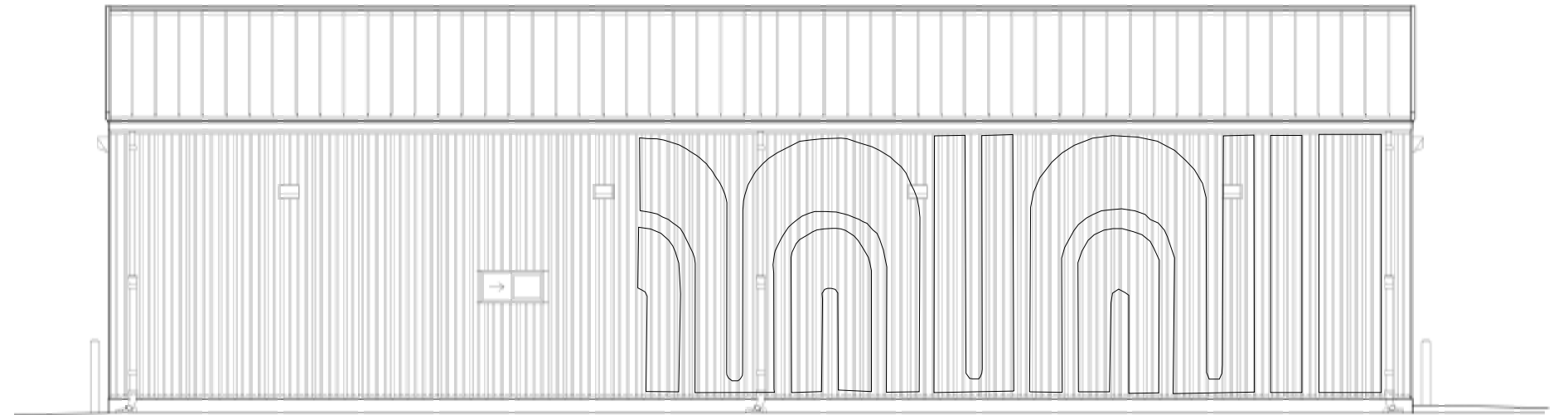
# FARE COLLECTIONS BUILDING-CONT'D



TYP. SECTION THRU FARE BLDG



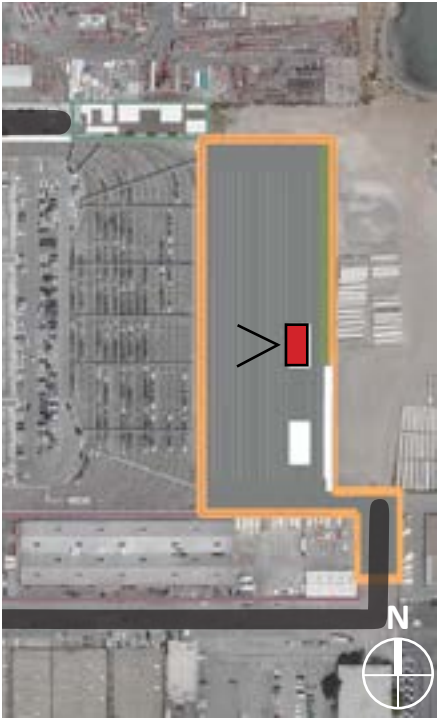
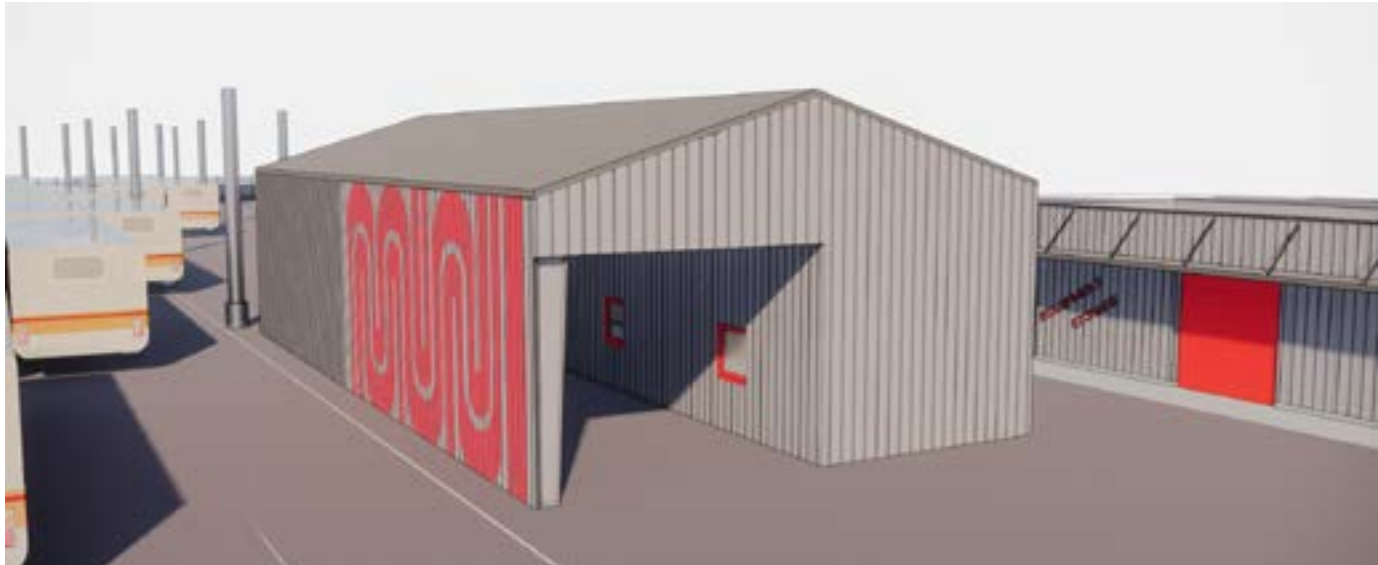
SOUTH ELEVATION



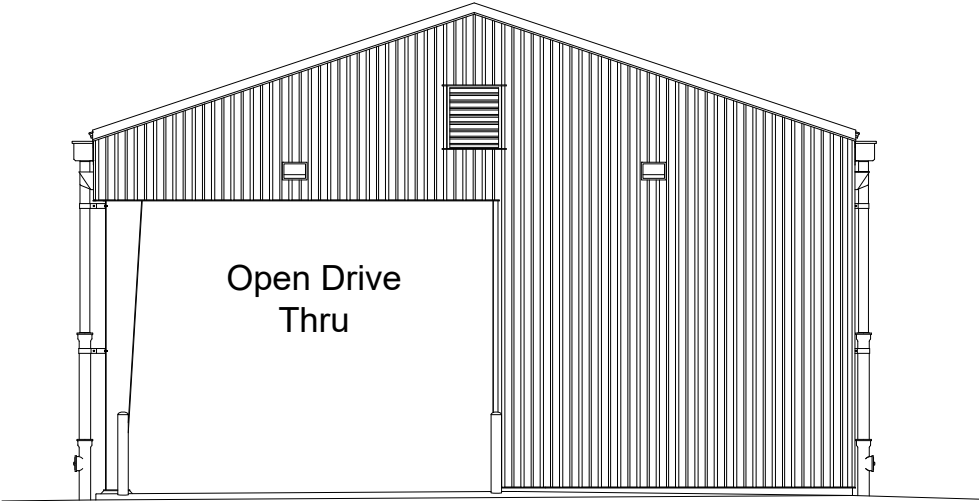
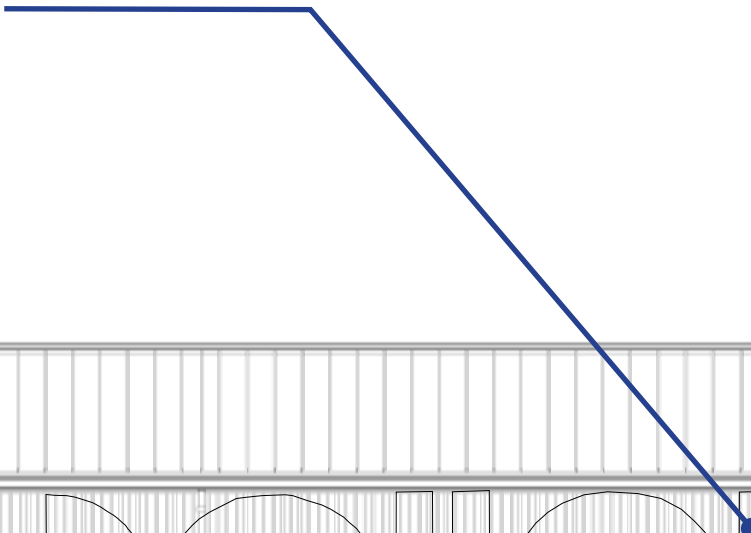
EAST ELEVATION



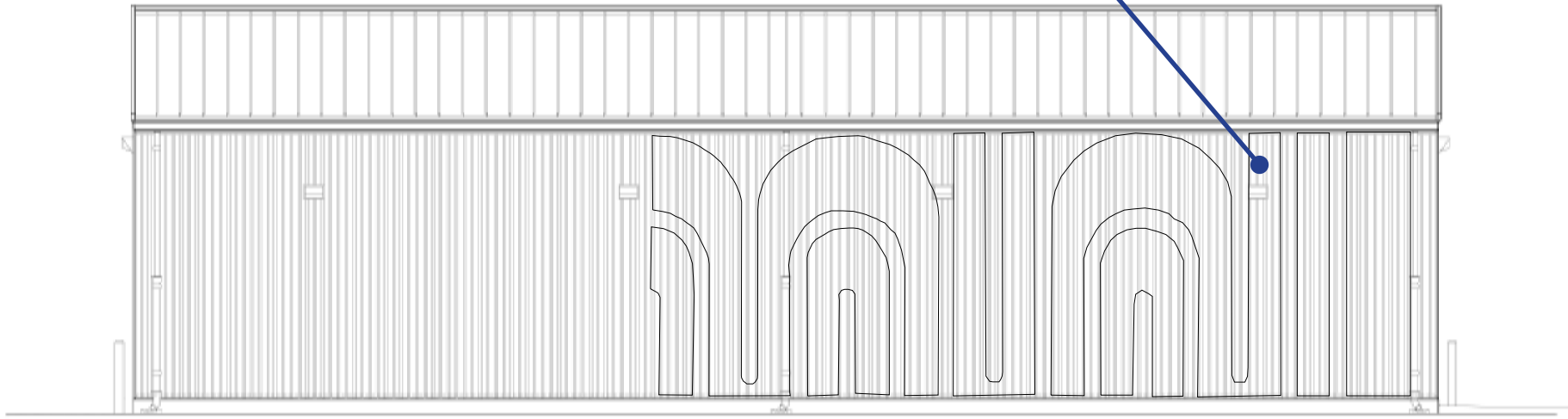
# BUS WASH BUILDING



Painted MTA Logo

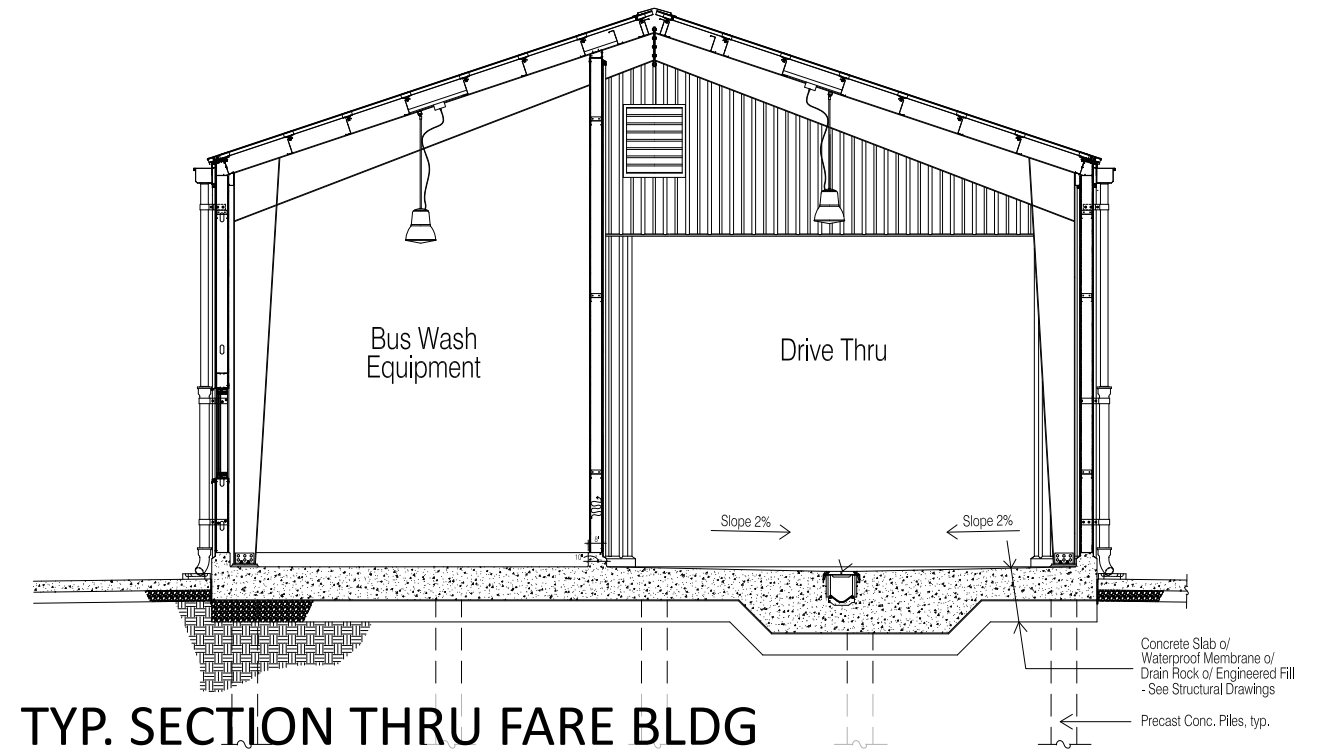


SOUTH ELEVATION

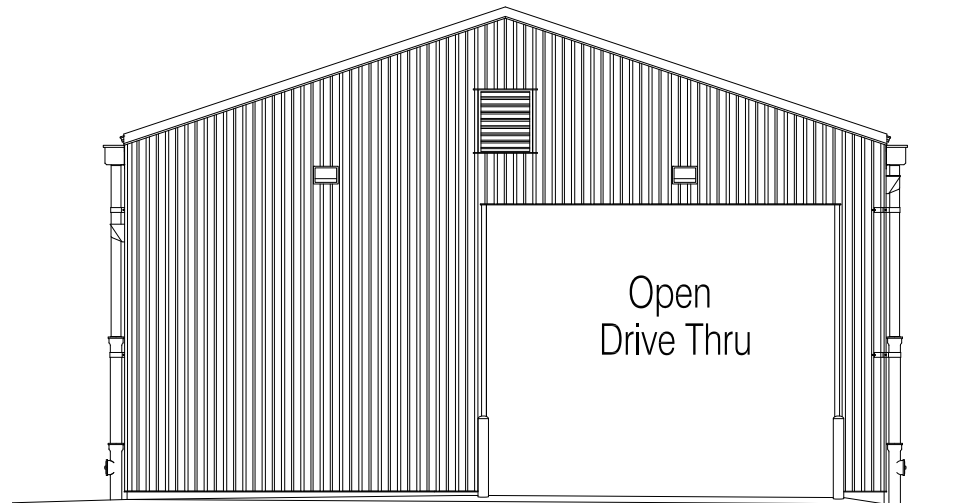


WEST ELEVATION

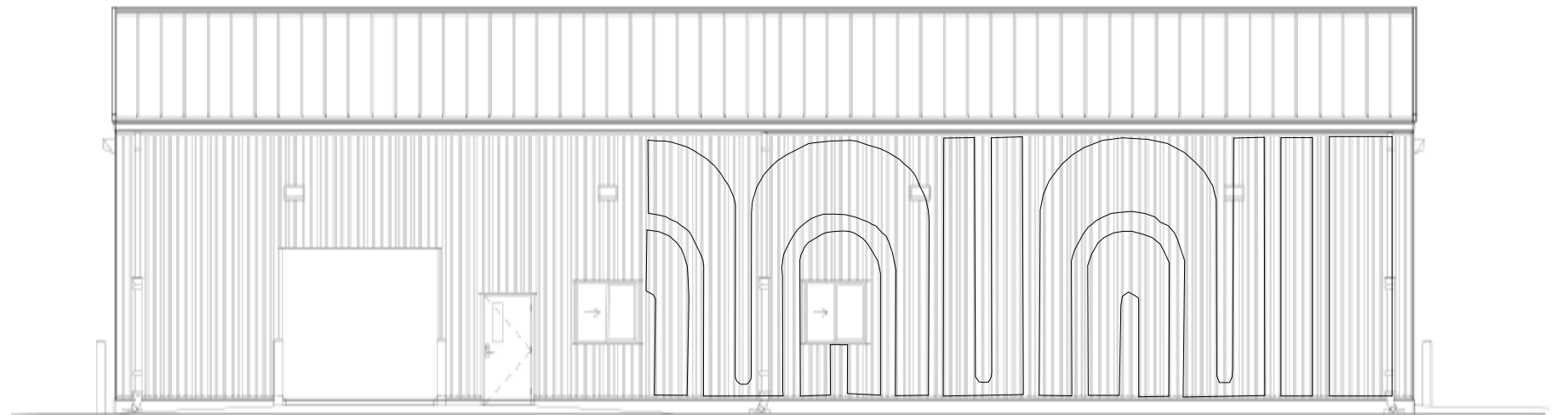
# BUS WASH BUILDING



TYP. SECTION THRU FARE BLDG



NORTH ELEVATION



EAST ELEVATION

# COLOR SCHEME & MATERIALS

SFMTA Graphite



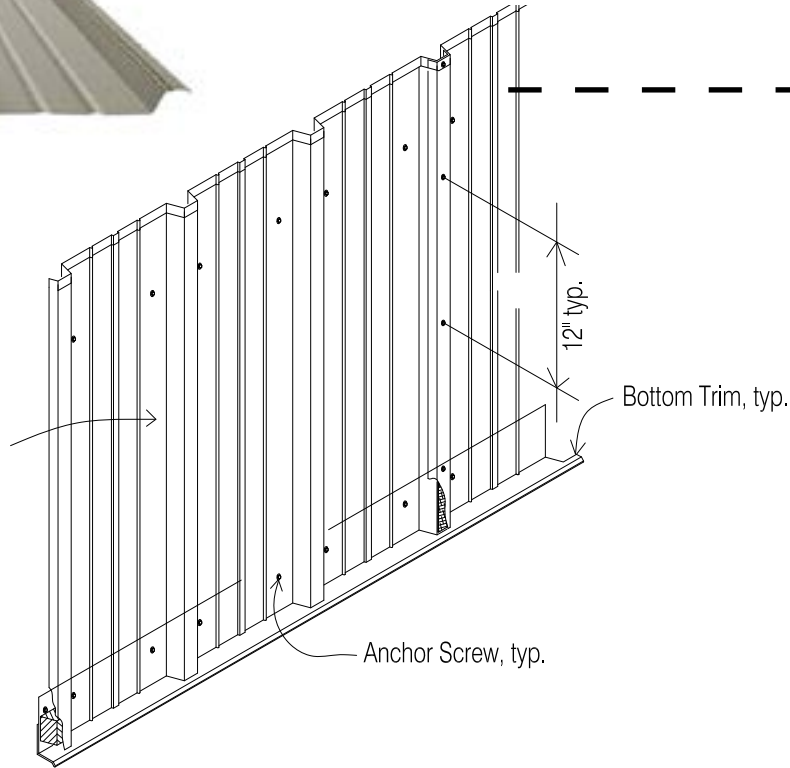
SFMTA Light Gray



SFMTA Red



.05 inch Aluminum Siding,  
w/ Factory Prime Paint Only for Exterior Panels  
& Factory "Kynar" Paint Fin. for Exterior Panels  
Applied o/ Building Paper (Tyvek or App. Eq.)  
o/ 5/8" DensGlass' Sheathing, typ.



**PERSPECTIVE LOOKING SOUTH TOWARDS FARE COLLECTION**

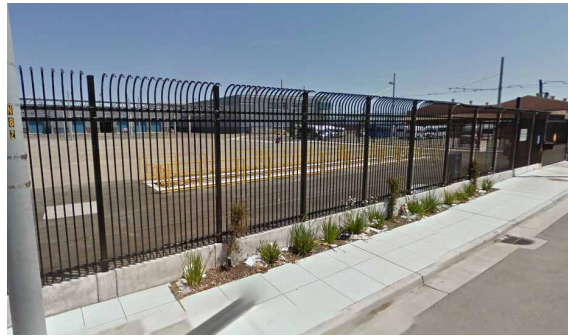


**PERSPECTIVE LOOKING NORTH EAST NEAR ENTRY**

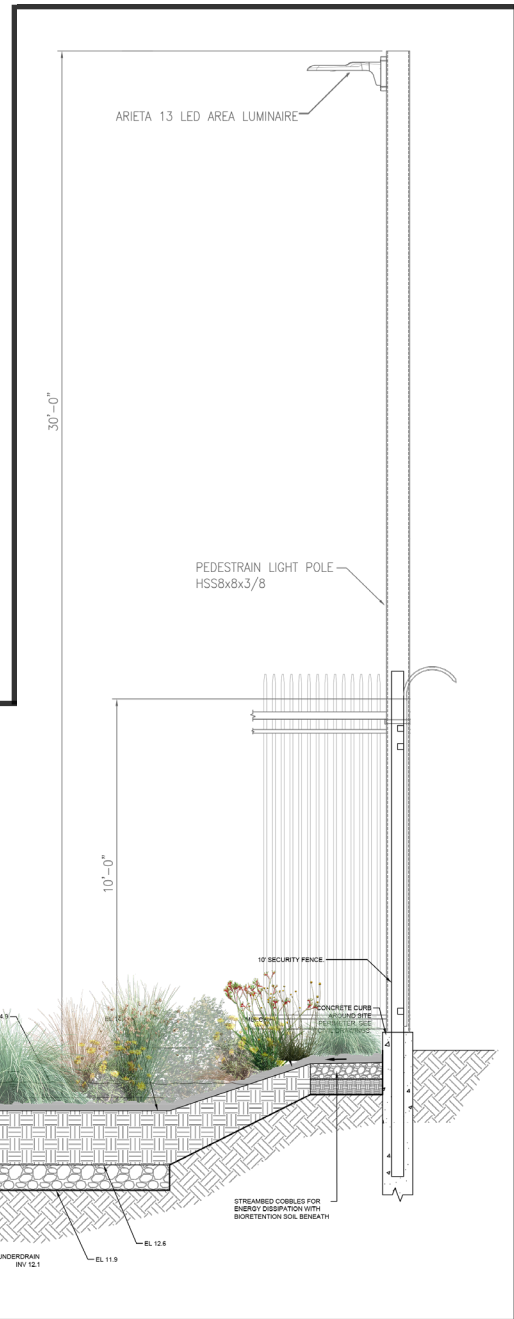


# SITE DESIGN

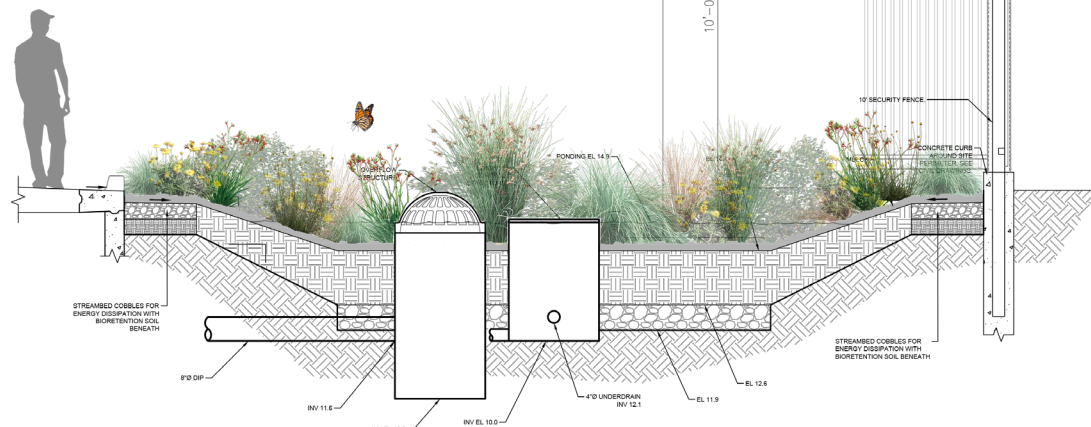
## Security Fence



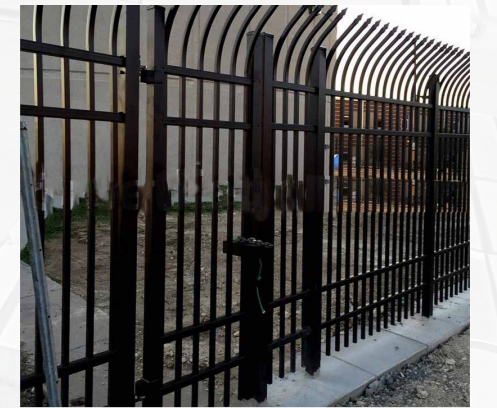
10' black iron picket fence with curved top. Will match adjacent fencing



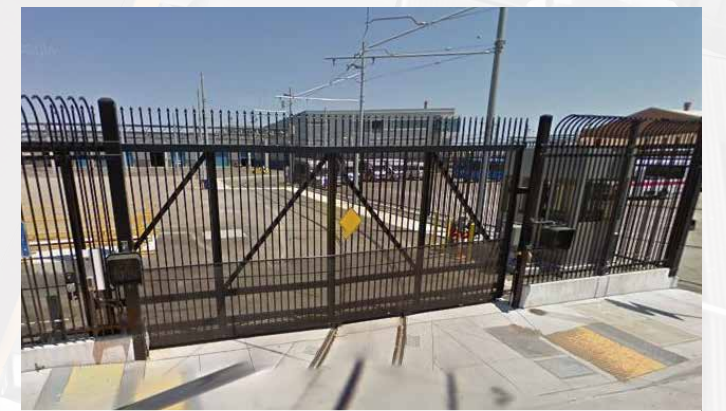
## Bioswale and Fence Section



## Automated Vehicular Gate + Man Gate



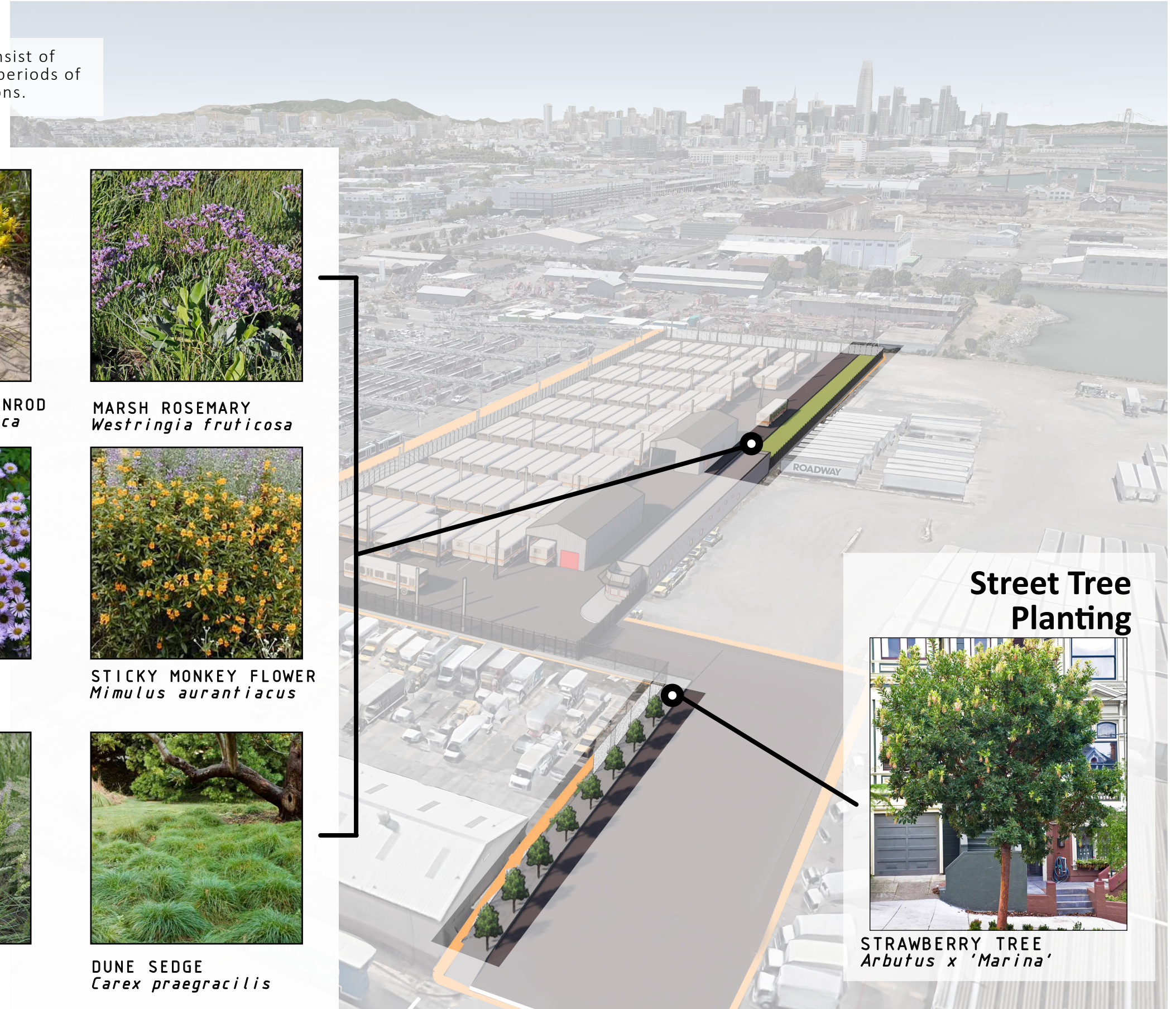
4' wide man gate



35' automated black iron picket vehicular gate

# PLANTING

Being situated along the bay's edge, the planting palette will consist of natives to this unique habitat. These plants are also adapted to periods of inundation and drought and will thrive in the bioswale's conditions.



## Bioswale Planting



**ALKALI RAGWORT**  
*Senecio hydrophilus*



**CALIFORNIA GOLDENROD**  
*Solidago californica*



**MARSH ROSEMARY**  
*Westringia fruticosa*



**PACIFIC NINEBARK**  
*Physocarpus capitatus*



**SEASIDE DAISY**  
*Erigeron glaucus*



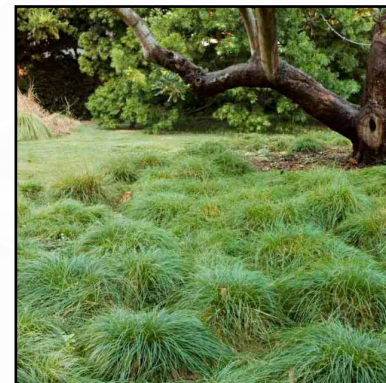
**STICKY MONKEY FLOWER**  
*Mimulus aurantiacus*



**COYOTE BUSH**  
*Baccharis pilularis*

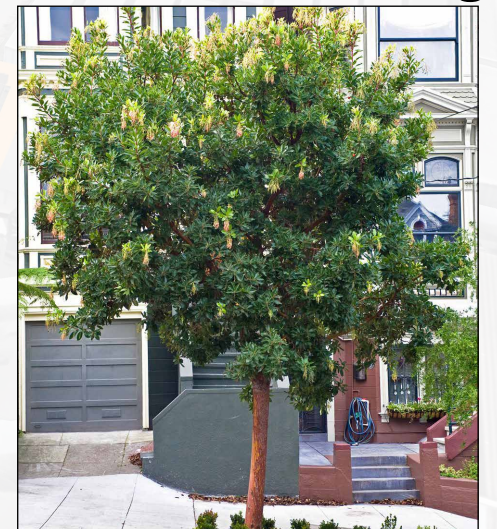


**JUNEGRASS**  
*Koeleria macrantha*



**DUNE SEDGE**  
*Carex praegracilis*

## Street Tree Planting



**STRAWBERRY TREE**  
*Arbutus x 'Marina'*

# ENTRY GATE AND FENCING





# PROPOSED SITE DESIGN

