

Office of the Chief Medical Examiner Building



San Francisco Arts Commission
Civic Design Review
Administrative Approval

July 20, 2015

www.sfdpw.org

Office of the Chief Medical Examiner Building

1 Newhall Street, San Francisco, California

San Francisco Arts Commission Civic Design Review

Administrative Approval

for

Phase 2: Design Development Phase 3: Construction Documents



July 20, 2015

OCME – Agenda:

- **Property / Project Description**
- **Project Site**
 - **Site Landscape Plan** (updated)
 - **Architectural Site Plan** (updated)
 - **Landscape Design Plant Materials** (updated)
 - **Landscape Design Site Furnishings** (updated)
- **Architectural Renderings** (updated)
- **Exterior Building Elevations** (updated)
- **Exterior Finish Materials board** (updated)
- **Questions / Discussion**

OCME – Property / Project Description:

Property Information

- Address: 1 Newhall Street
- Zoning: PDR-2 will require Conditional Use approval
- Existing building 18,000 SF constructed 1984
- Existing 1-story Precast Tilt-up Structure
- Light weight Timber roof
- Partial wood mezzanine
- 25'-4" Building height
- Environmental Evaluation approval May 31, 2013

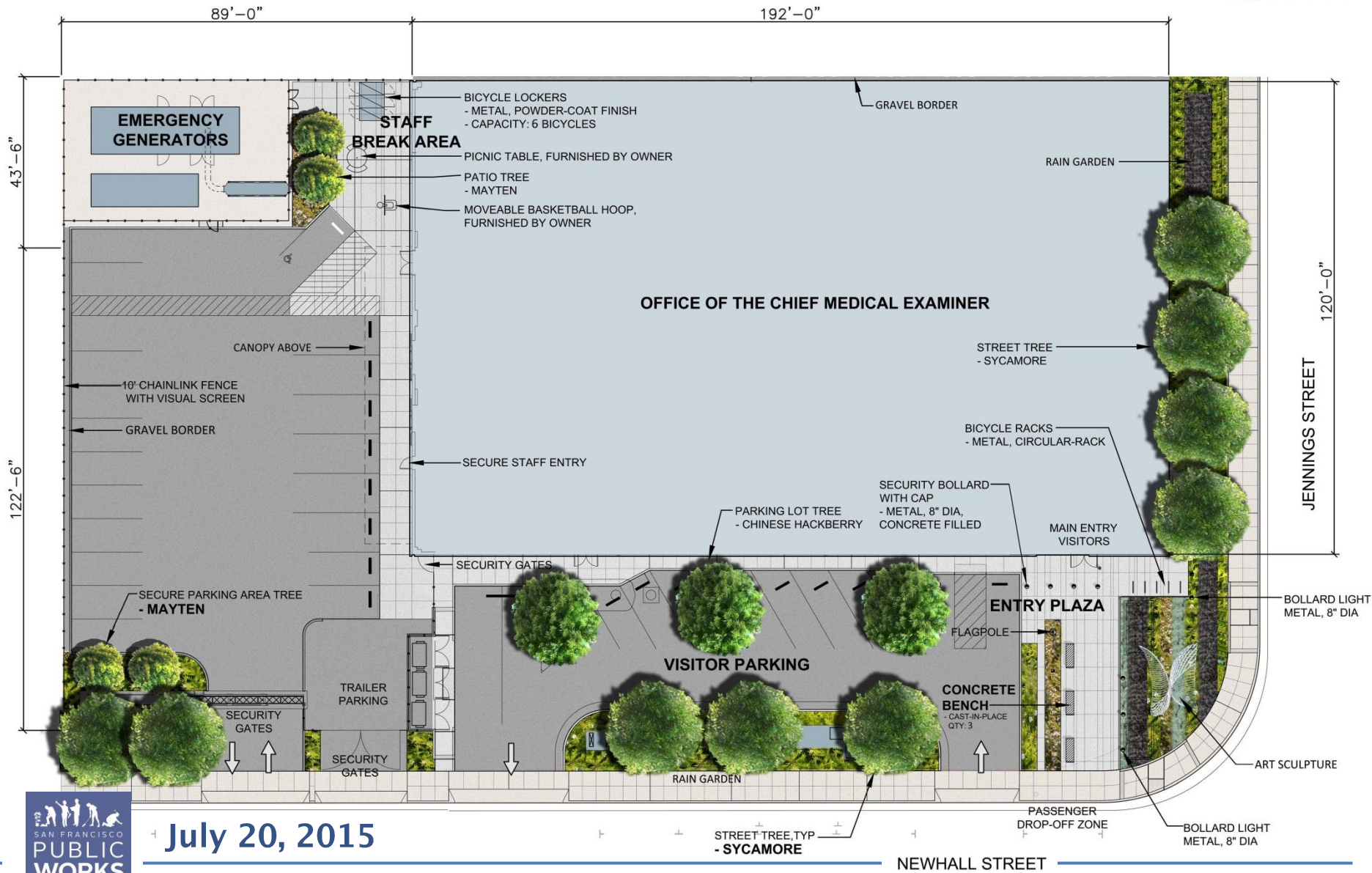
Project Information

- Autopsy / Laboratory / Support areas
- Office and Office Support areas
- Public / Amenity
- 2-Story building, 42,218 gsf
- 50 Employees
- Parking requirements
 - 8 City vehicles
 - 6 visitor vehicles
 - 10 Secured First responder vehicles
- \$37.45 M Total Construction Cost

OCME – Existing Site/ Building:



OCME – Site Landscape Site:



July 20, 2015

NEWHALL STREET



OCME – Landscape Design (Plant Materials):



Hypericum



Cream Flax



Chondropetalum



Loropetalum



Artemisia



Pink Muhly

Main Entry Plaza

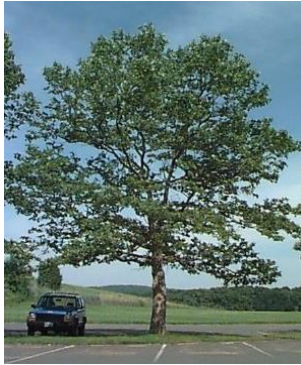
Merrill
Morris



July 20, 2015



OCME – Landscape Design (Plant Materials):



Street Tree - Sycamore

Newhall Street



Arctostaphylos



Carex Divulsa

Newhall Street – Rain Garden



Chondropetalum



Street Tree -
Sycamore

Jennings Street



Carex Divulsa



Chinese Hackberry

Visitor Parking



Creeping Myoporum

Note: All tree types shown are incorporated into the landscape design. Each was selected for its appropriate size, scale, and growth - to best adapt to their planted locations.

**Merrill
Morris**

OCME – Landscape Design (Plant Materials):



Mayten



Bush Anemone



Santolina

Note: All tree types shown are incorporated into the landscape design. Each was selected for its appropriate size, scale, and growth habit - to best adapt to their planted locations.

Secure Parking Area - Corner Area



Mayten



Loropetalum



Screen Hedge at Generator Enclosure

Staff Break Area

OCME – Landscape Design (Site Furnishings):



Bicycle Rack

- Circular, Metal, brushed finish metal rack



Bicycle locker

- Metal, powder coat finish
- Capacity: 4 bikes (2 each)



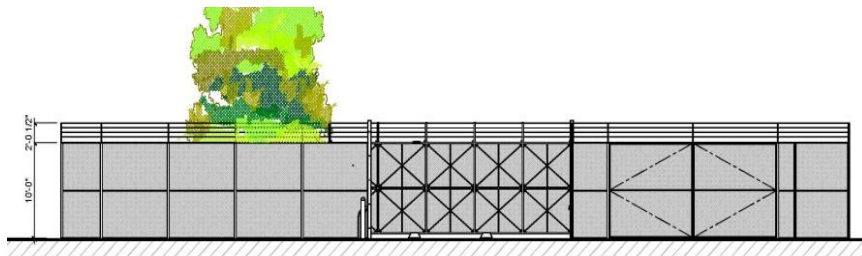
Security Bollard

- Metal, brushed finish, 8" dia, concrete-filled
- Non-lighted



Lighted Bollard

- Metal, brushed finish, 8" dia
- LED



Secure Parking entrance

- Security Gate: Card-reader-activated box-frame roller gate, w/ obscuring fabric and barbed wire.



Seating Benches (2)

- Integral colored (to match plaza area concrete) cast-in-place concrete benches,
- Smooth steel-formed concrete,
- Chamfered & eased edges, typ.

Merrill
Morris

OCME – Architectural Renderings:



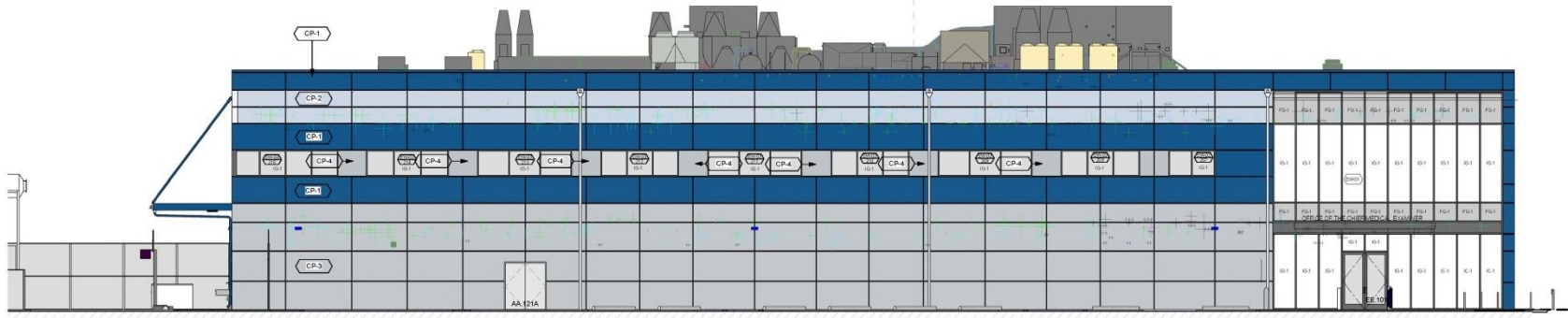
OCME – Architectural Renderings:



OCME – Architectural Renderings:

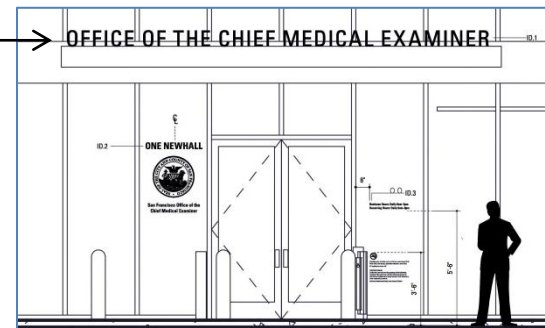


OCME – Building Elevations:



(Newhall Street) SOUTH ELEVATION

OCME canopy signage; Fabricated 9" high, 1.5" deep, unifers 57 condensed, stainless steel letters w/ a horizontal brushed finish; enclosed back, mechanically fastened to canopy.

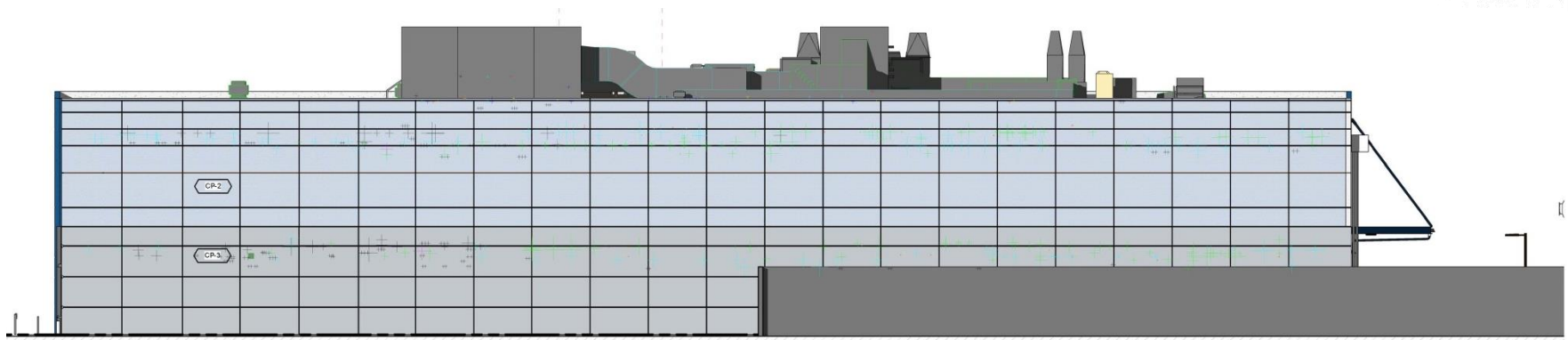


ENLARGED MAIN ENTRY ELEVATION

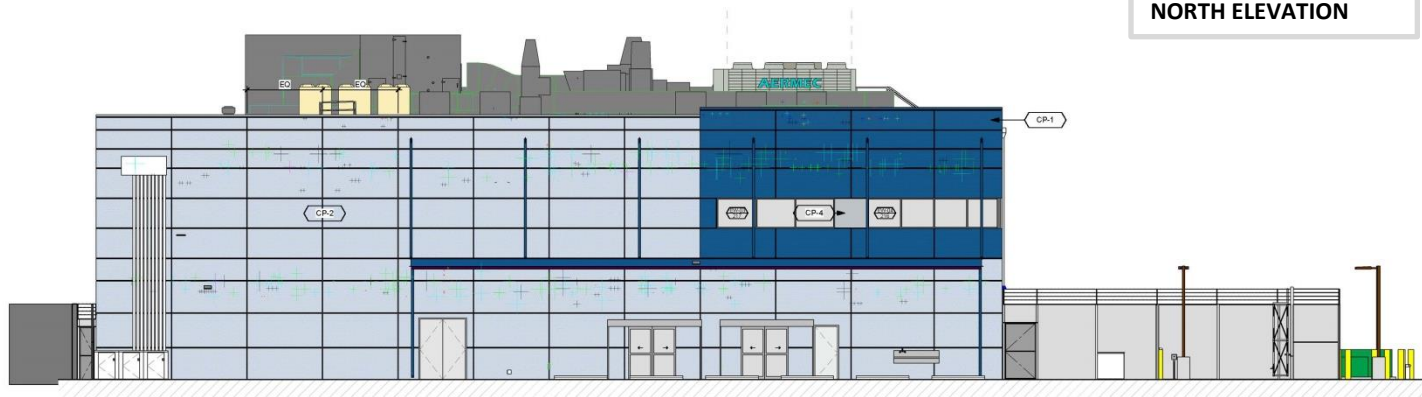


(Jennings Street) EAST ELEVATION

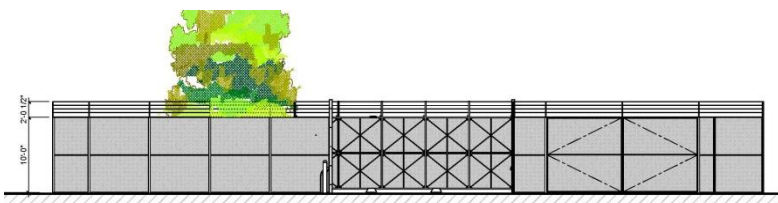
OCME – Building Elevations:



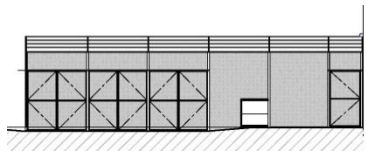
NORTH ELEVATION



WEST ELEVATION (with Canopy)

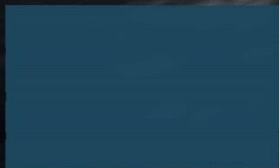
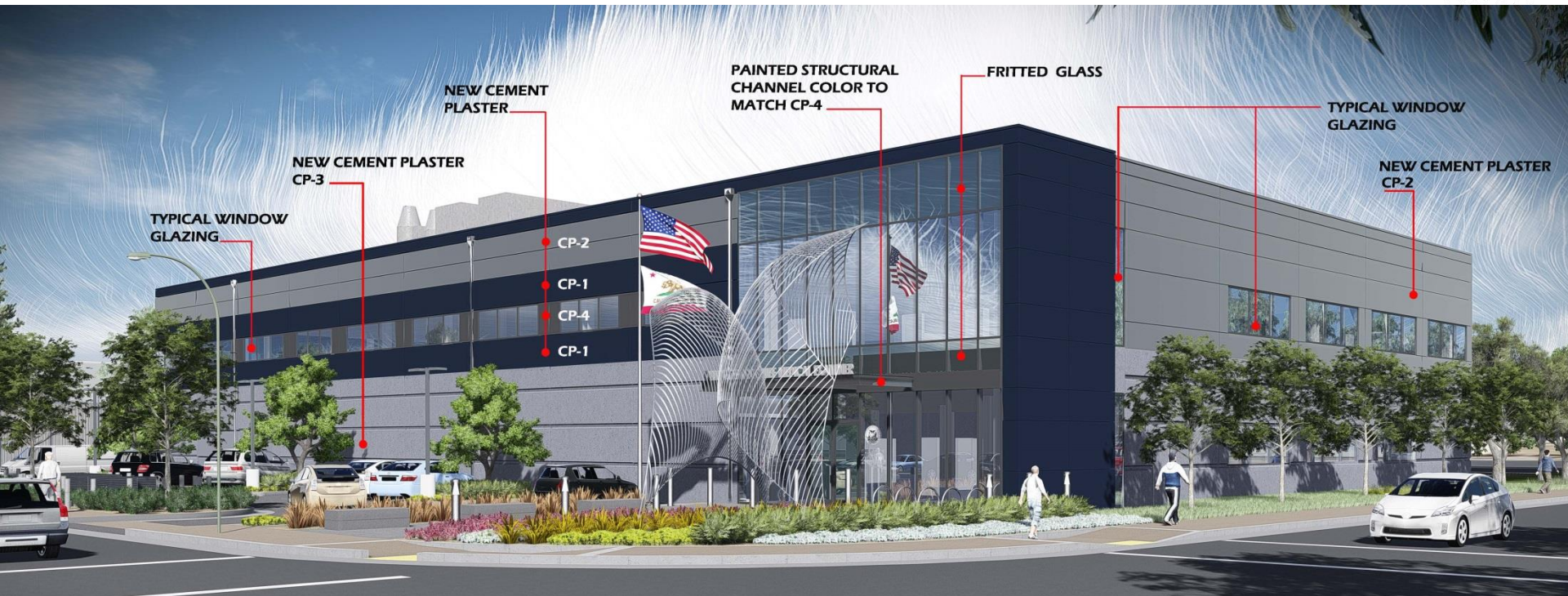


SITE SECURITY FENCE - SOUTH ELEVATION

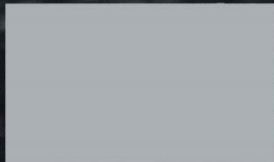


SITE SECURITY FENCE - EAST ELEVATION

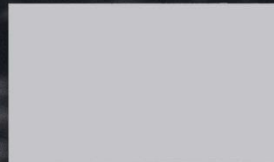
OCME – Exterior Finish Materials:



CP-1
CEMENT PLASTER



CP-2
CEMENT PLASTER



CP-3
CEMENT PLASTER



CP-4
CEMENT PLASTER



FRITTED GLASS



TYPICAL WINDOW GLAZING

**OFFICE OF THE CHIEF
MEDICAL EXAMINER BUILDING**
1 NEWHALL STREET
SAN FRANCISCO, CA



EXTERIOR FINISH
MATERIALS
JULY 20TH, 2015

KMD
ARCHITECTS

OCME – Questions/ Discussions:



July 20, 2015