

ONE OAK

CIVIC DESIGN REVIEW COMMITTEE PRESENTATION

11.16.2015

Snøhetta 

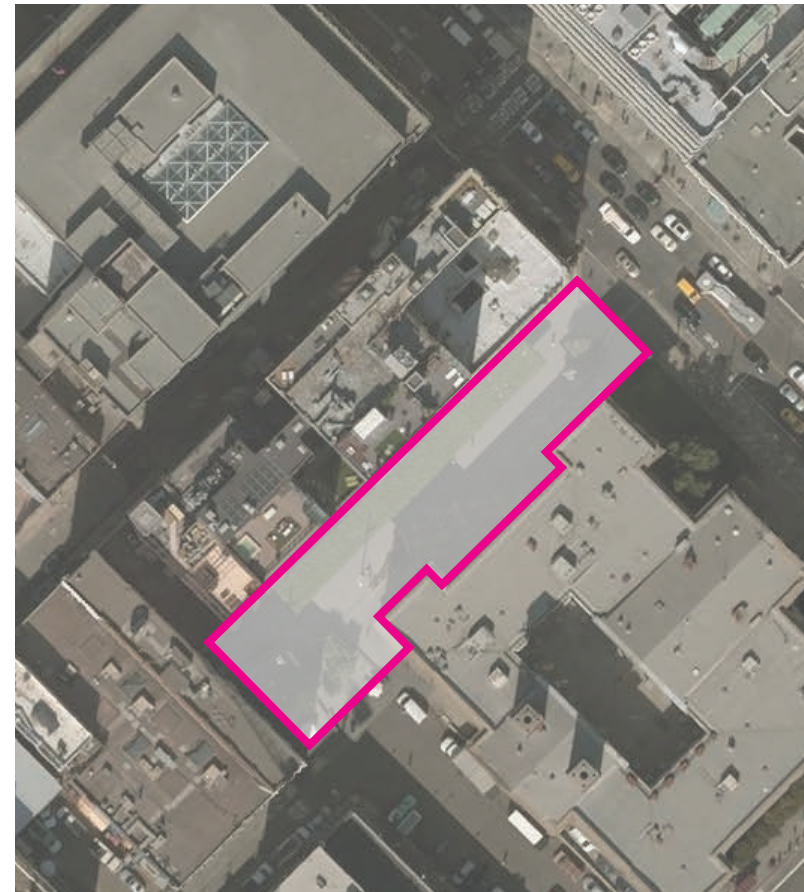
OAK PLAZA
san francisco

Plaza - 15,975 sq/ft (0.37 acres)
Property - 33,720 sq/ft (0.77 acres)



MINT PLAZA
san francisco

Plaza - 19,450 sq/ft (0.45 acres)



CLOUD GARDENS
toronto

Plaza - 23,650 sq/ft (0.54 acres)



OAK PLAZA
san francisco

Plaza - 18,700 sq/ft (0.43 acres)
Property - 33,720 sq/ft (0.77 acres)



MINT PLAZA
san francisco

Plaza - 19,450 sq/ft (0.45 acres)



formal elements

- arbor with climbing vines
- street trees
- rain gardens
- fixed and loose furniture

flexible program

- art exhibitions
- live music
- cafes/restaurants
- small festivals
- food truck
- flower cart

CLOUD GARDENS
toronto

Plaza - 23,650 sq/ft (0.54 acres)

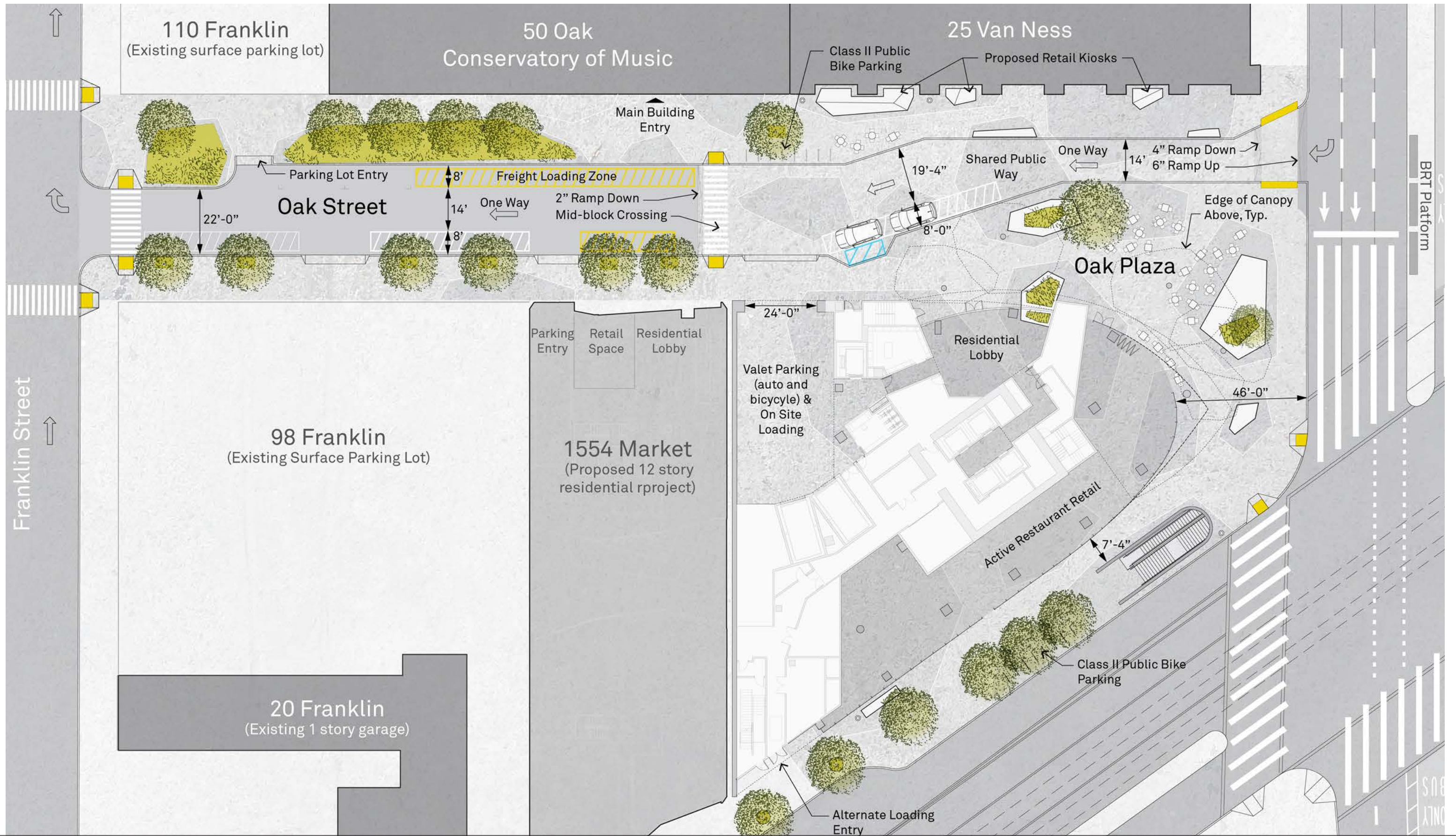


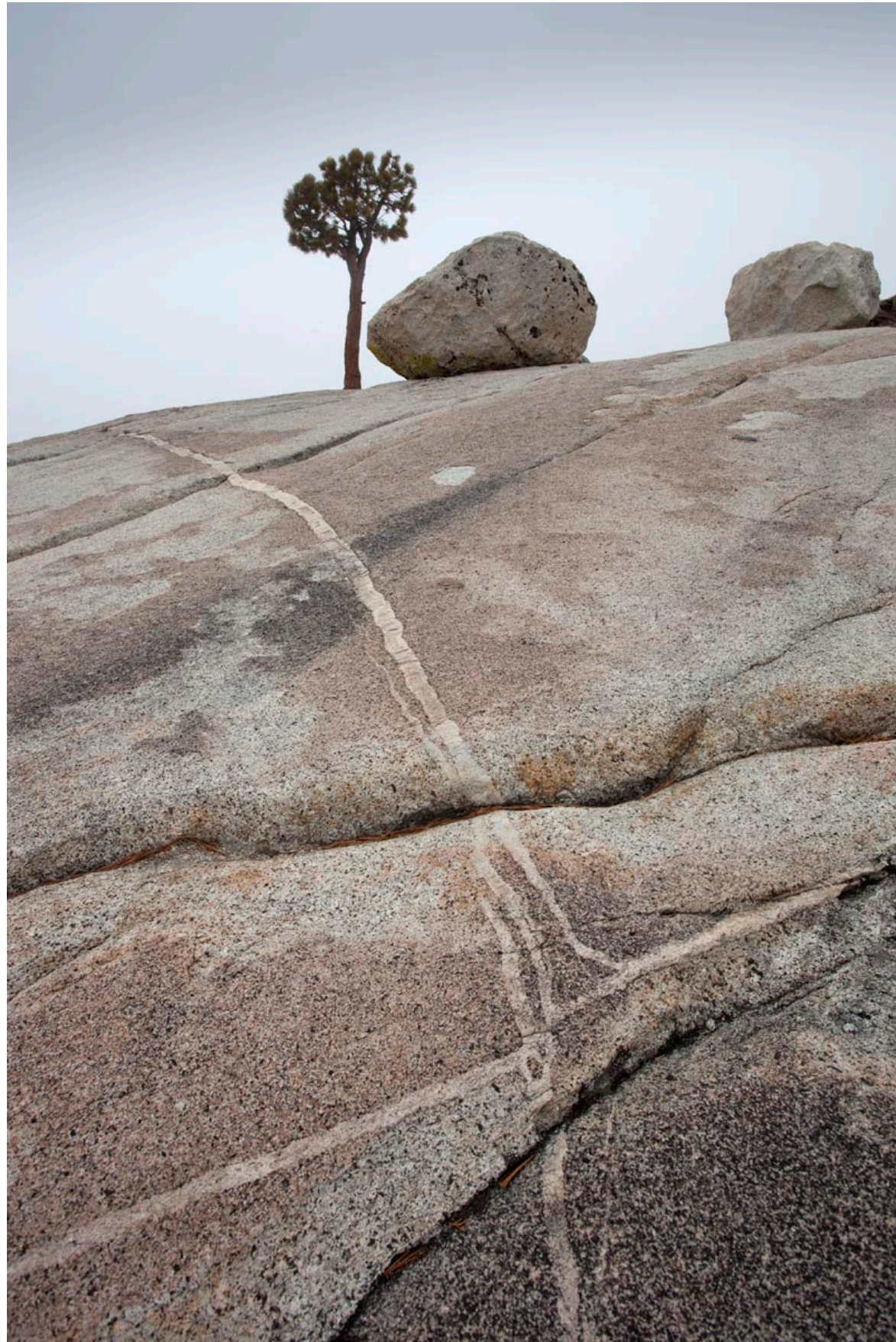
formal elements

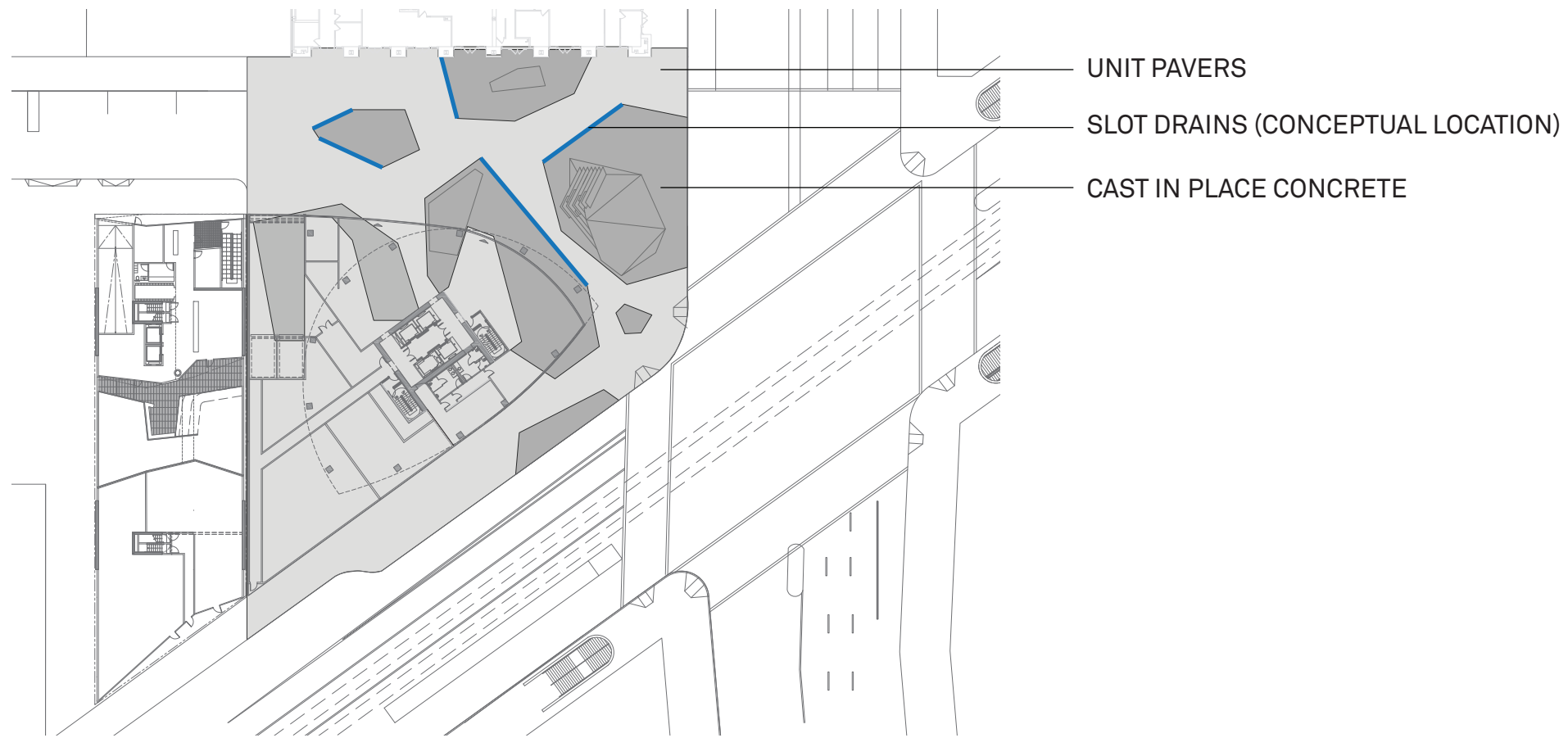
- shade trees
- semicircular lawn
- climbing walkways
- water feature
- public art
- greenhouse

flexible program

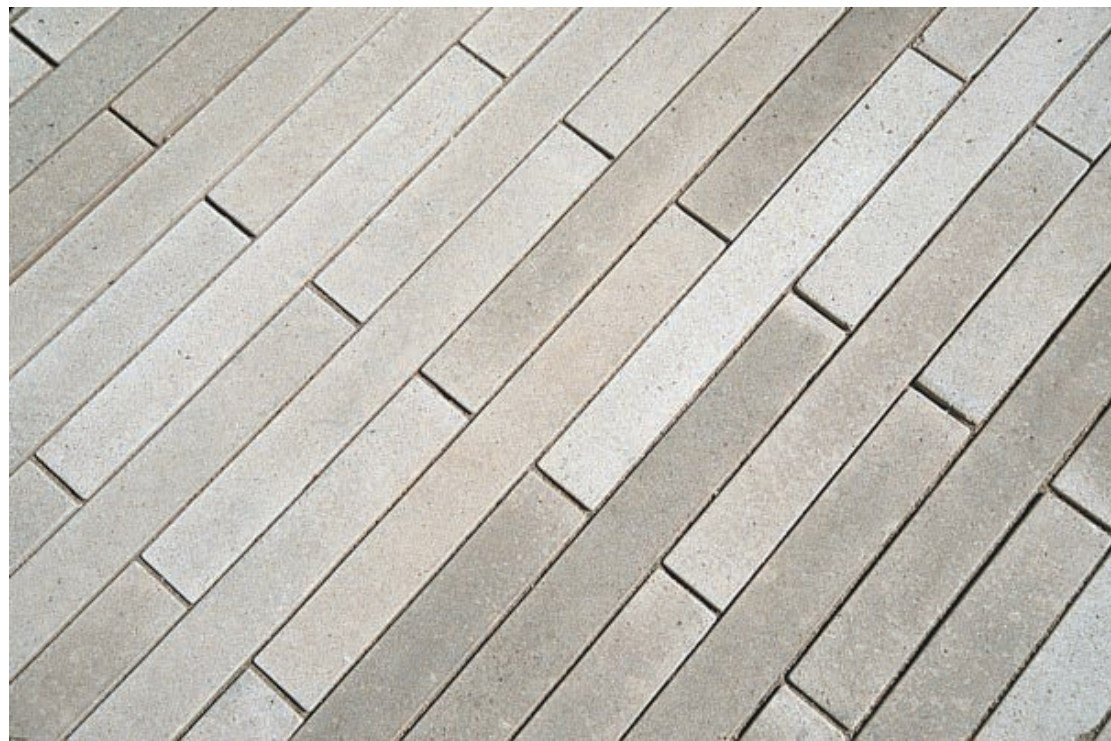
- art exhibitions
- small festivals
- live music
- parkour



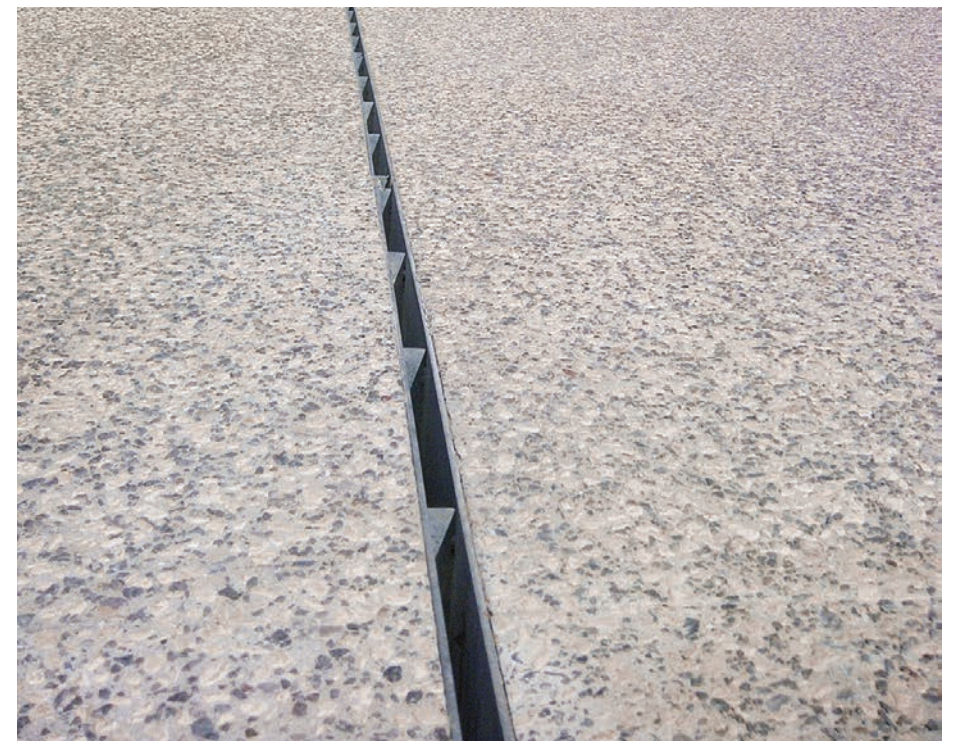




CAST IN PLACE CONCRETE



UNIT PAVERS



SLOT DRAINS

GROVE PLANTING TYPE

Drought and wind tolerant, sun and heat-loving species.

Possible species Include:

- | | |
|---|-----------------------|
| <i>Lyonothamnus floribundus</i> ssp. <i>asplenifolius</i> | Catalina Ironwood |
| <i>Artemisia californica</i> 'Canyon Gray' | California Sagebrush |
| <i>Artemisia maritima</i> 'Alba' | White Flowered Thrift |
| <i>Deschampsia cespitosa</i> | Tufted Hairgrass |
| <i>Bouteloua gracilis</i> | Blue Grama |
| <i>Sporobolus heterolepis</i> | Praire Dropseed |
| <i>Baccharis pilularis</i> 'Pigeon Point' | Coyote Brush |



STORM-WATER GARDEN PLANTING TYPE

Shade tolerant, water-tolerant species.

Possible species Include:

- | | |
|------------------------------|-----------------------|
| <i>Taxodium distichum</i> | Baldcypress |
| <i>Deschampsia cespitosa</i> | Tufted Hairgrass |
| <i>Carex praegracilis</i> | Clustered Field Sedge |
| <i>Polystichum munitum</i> | Western Sword Fern |
| <i>Heuchera maxima</i> | Island Alum Root |



STREET TREE PLANTING TYPE

Large, resilient, civic species.

Possible species Include:

- | | |
|--|--------------|
| <i>Platanus x acerifolia</i> 'Yarwood' | London Plane |
| <i>Ginkgo biloba</i> | Ginkgo |





Lungo Mare/ Reinforced Cast Stone



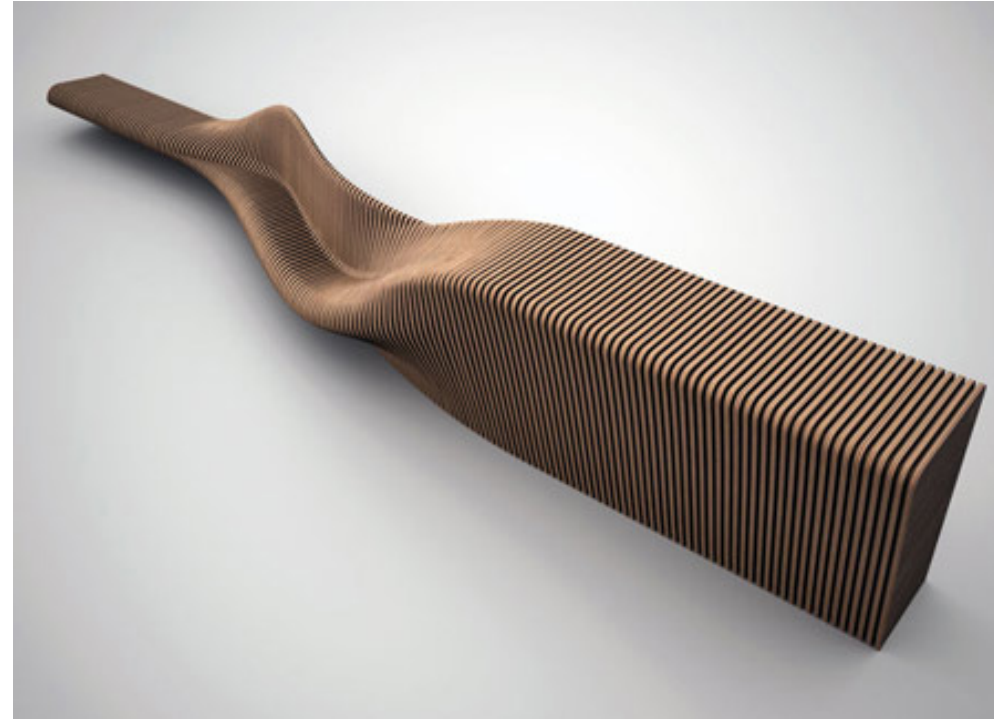
Movable seating / Mint Plaza / San Francisco



Fixed social seating



Sculptural wood bench



Sculptural wood bench



Mock-up of Times Square Bench

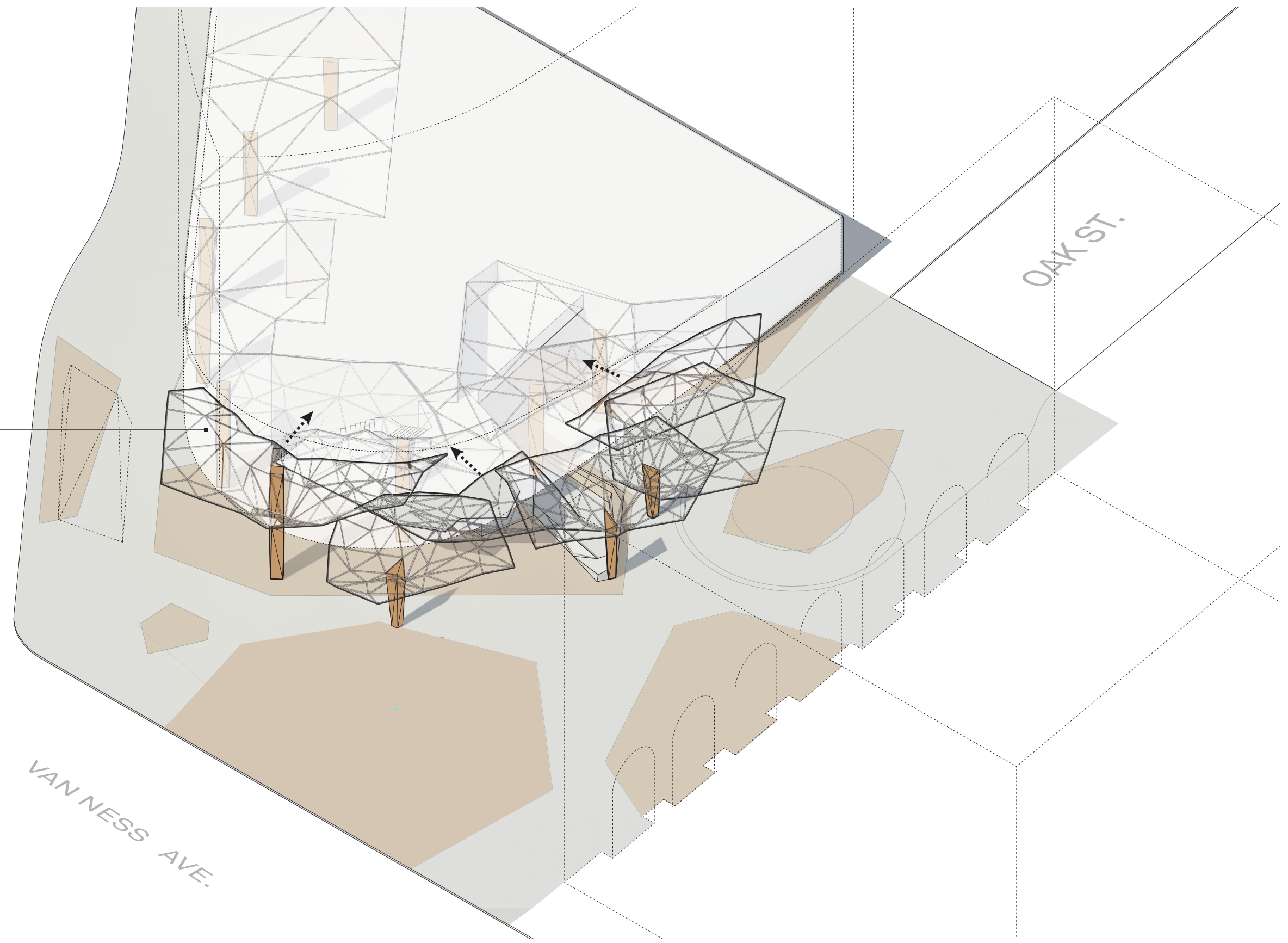
MARKET ST.

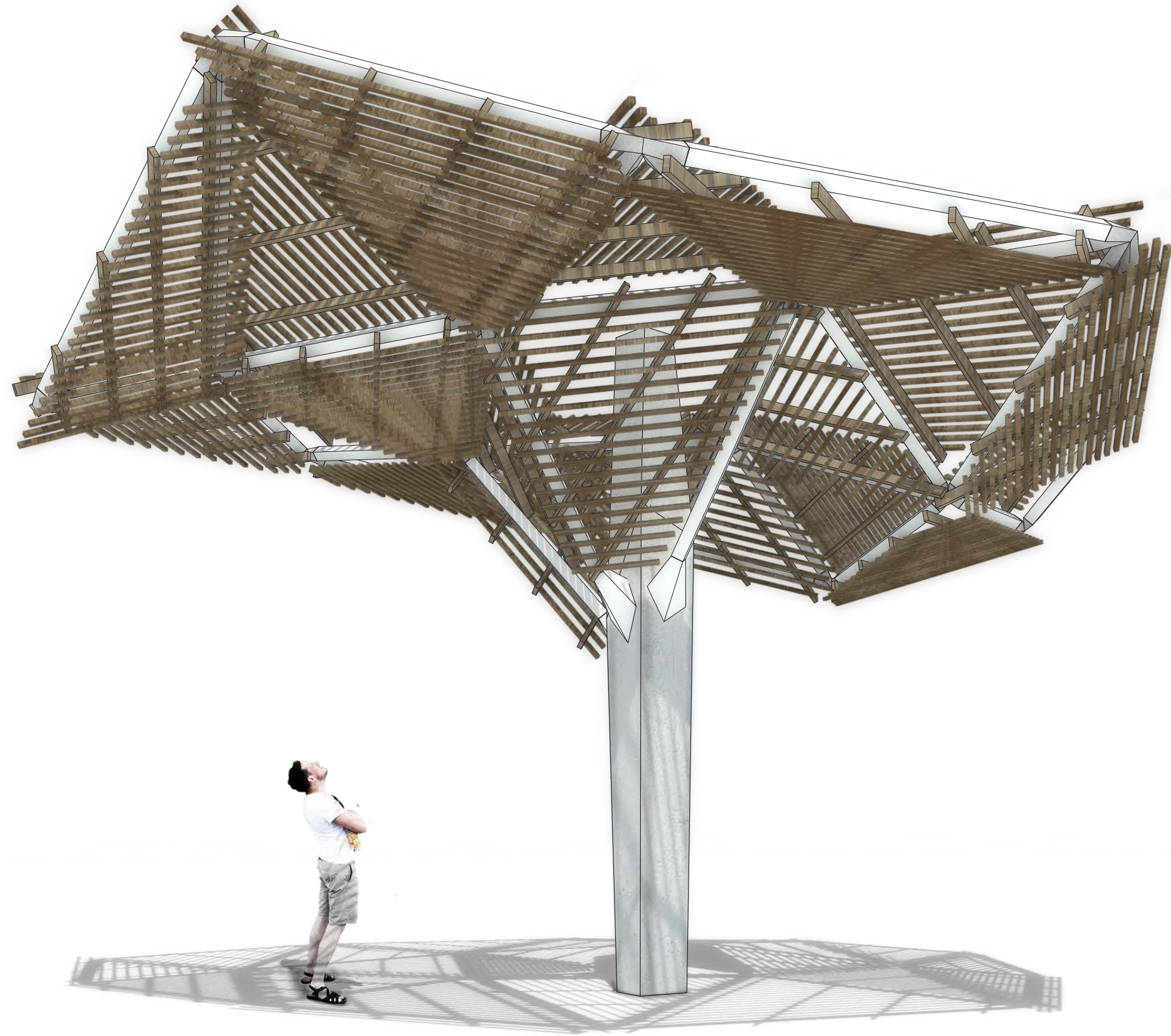
OAK ST.

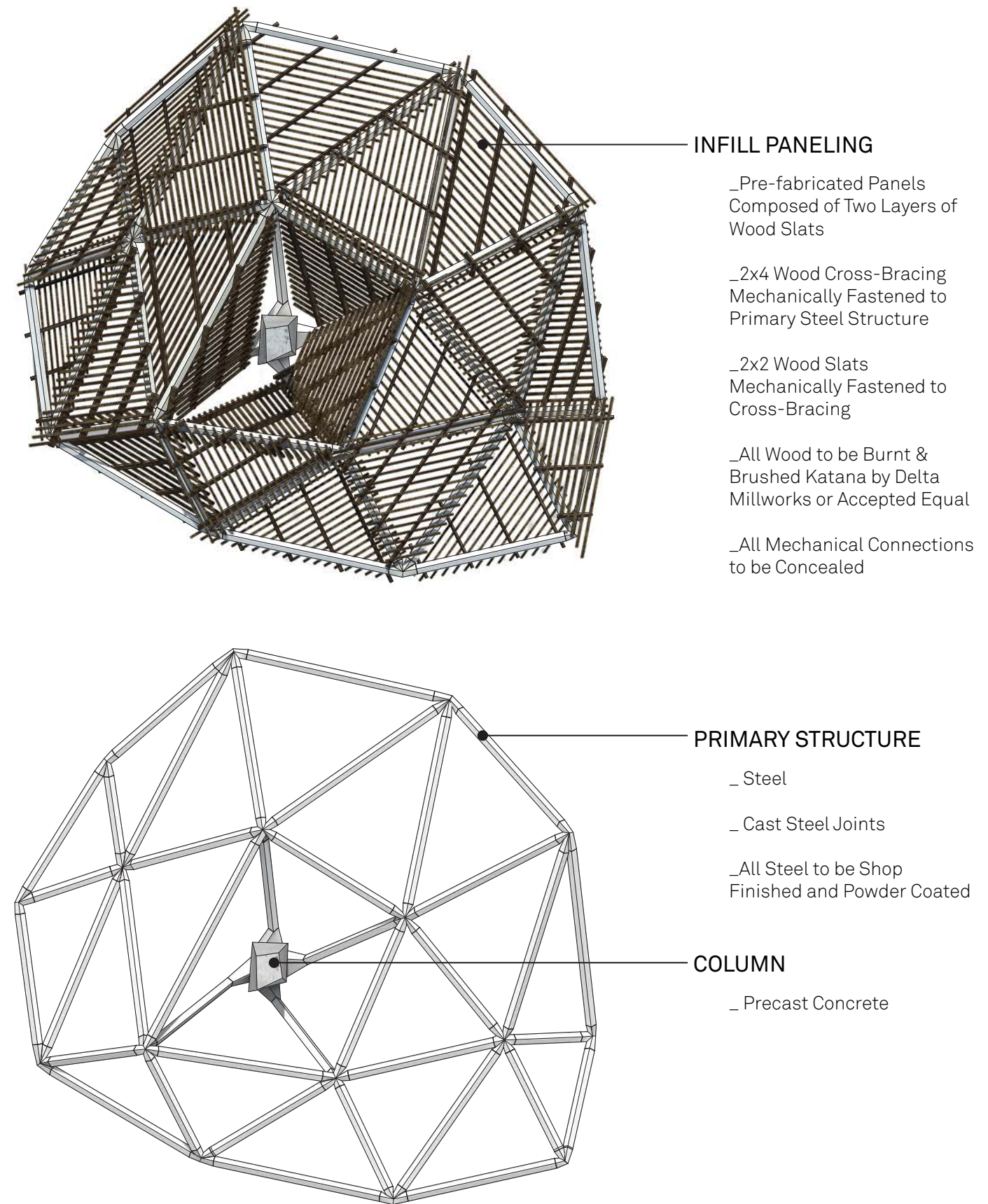
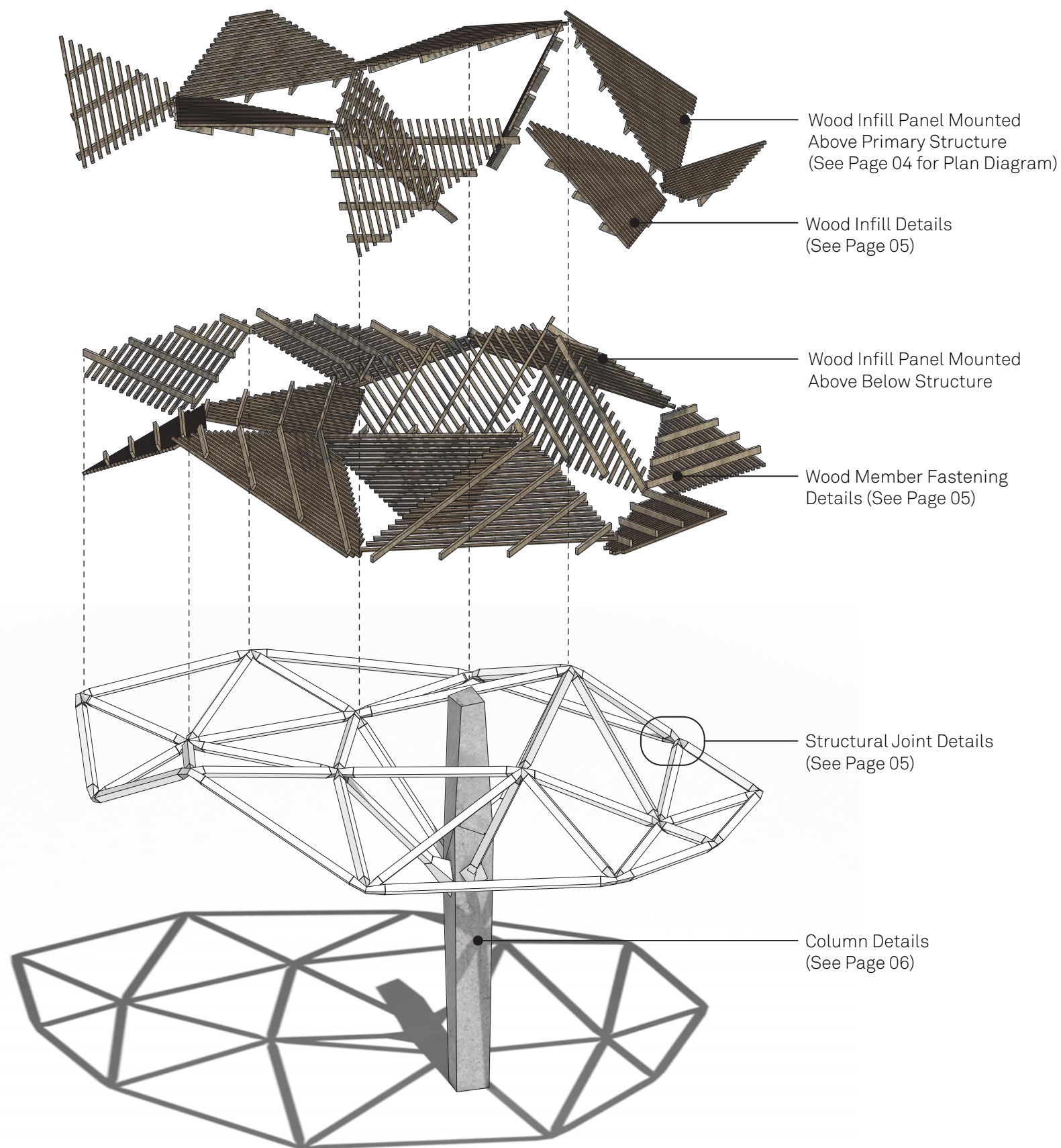
VAN NESS AVE.

CANOPY

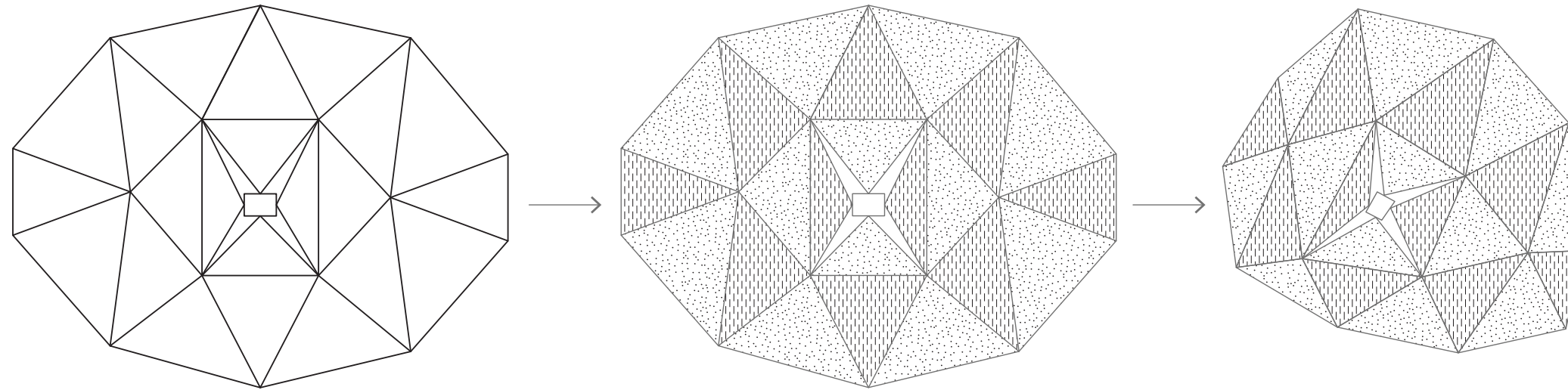
- _Conceptually and physically links interior lobby spaces and exterior plaza spaces.*
- _Provides wind mitigation through modulated density of secondary structure, and layering.*
- _Porosity allows natural light to penetrate*







CANOPY ORGANIZATION DIAGRAM



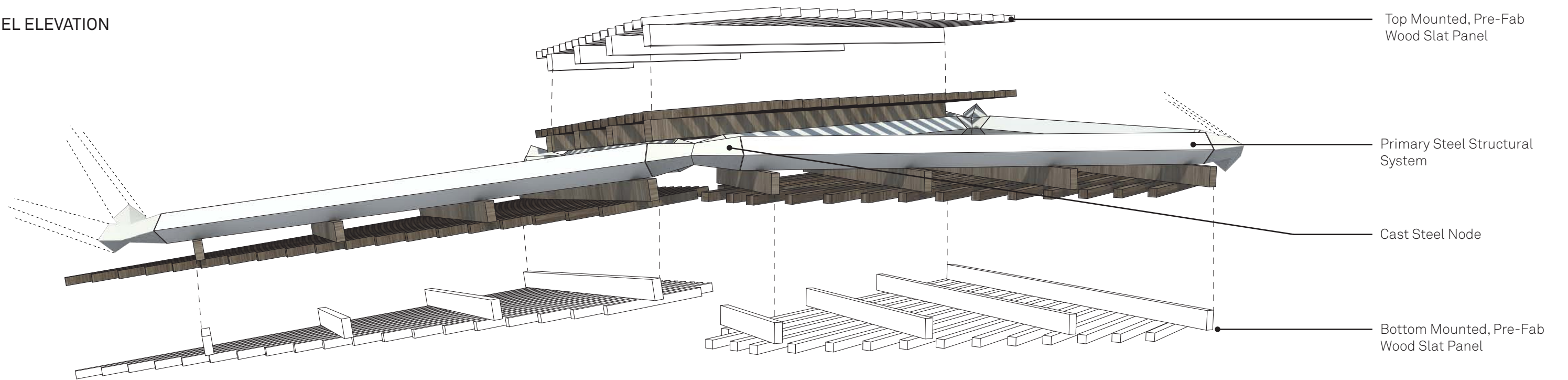
1. The canopy plan is based on a symmetrical organization system

2. Alternating infill panels (above and below the structure) determine the total number of segments

3. Structural nodes are shifted on the X, Y and Z axis to create an A-Symmetrical plan based on plaza coverage / wind mitigation

 Panel Attached Above
  Panel Attached Below

3-PANEL ELEVATION

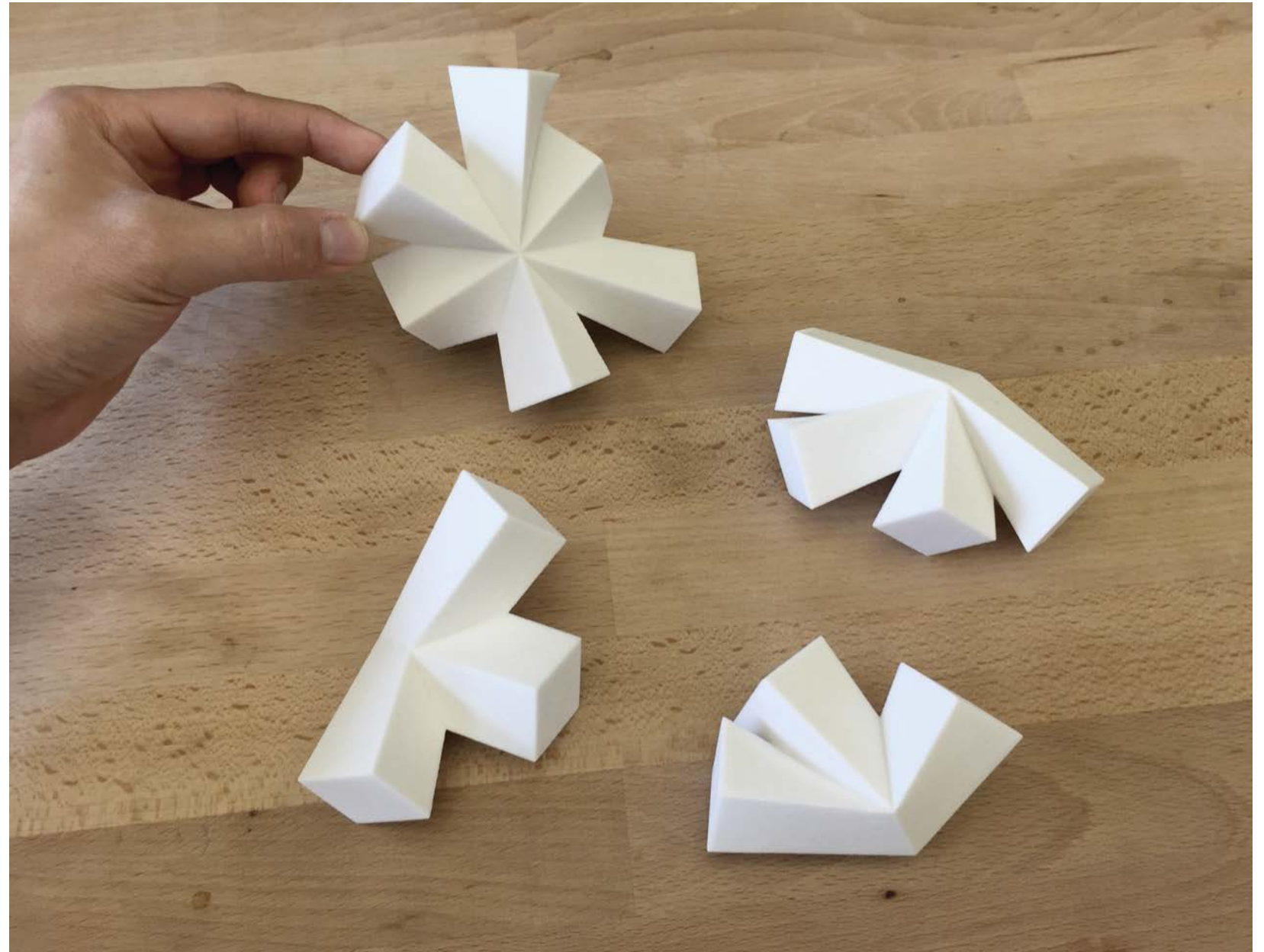
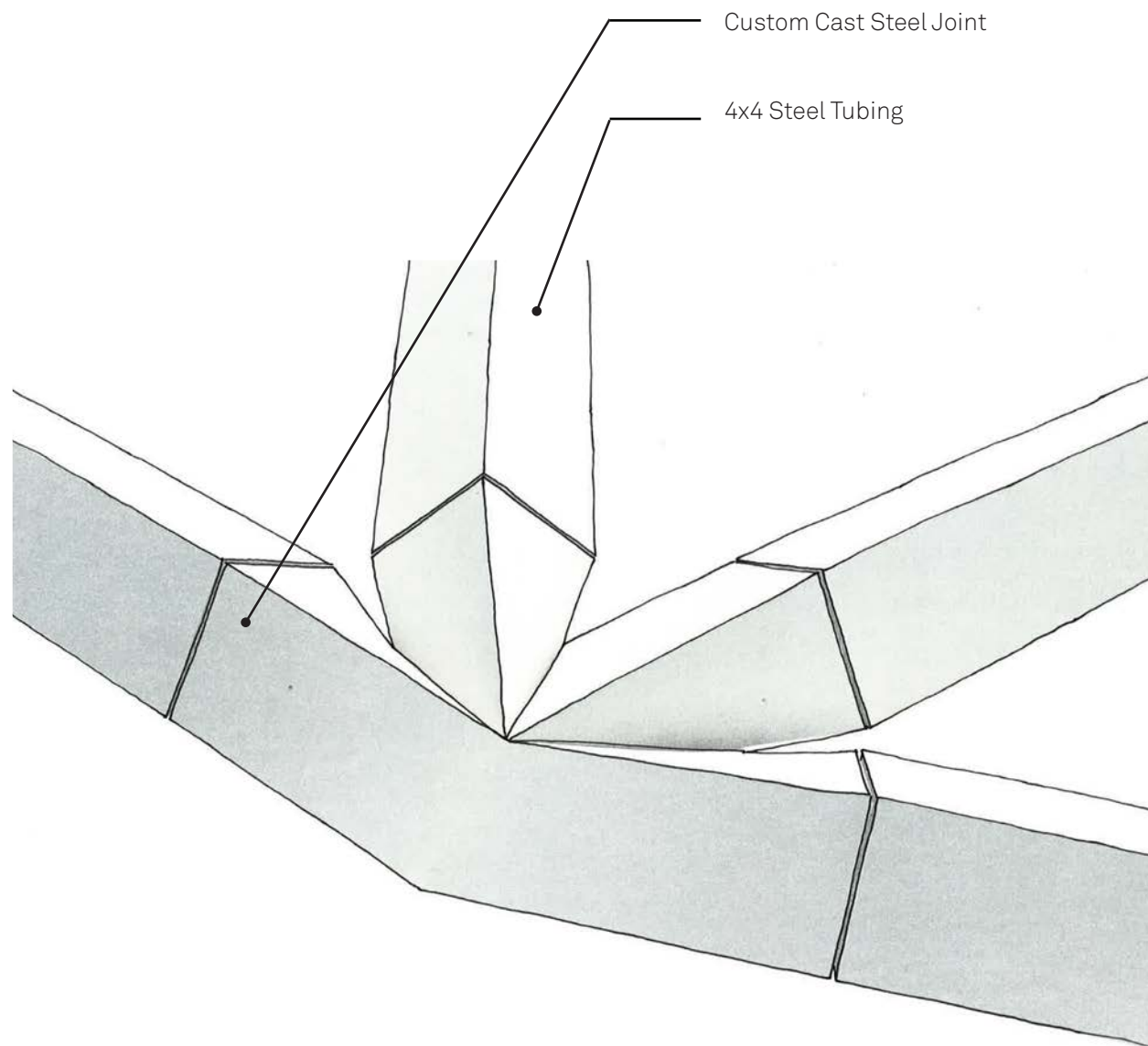


Top Mounted, Pre-Fab Wood Slat Panel

Primary Steel Structural System

Cast Steel Node

Bottom Mounted, Pre-Fab Wood Slat Panel



Custom Cast Steel Joint Models at 3" = 1'-0" Scale