



## **PORTSMOUTH SQUARE ART ENRICHMENT PROJECT OUTLINE**

### **BACKGROUND (CAPITAL IMPROVEMENT PROJECT OVERVIEW)**

This project includes building a new Recreation Center and renovating the playground and landscape areas.

### **ART OPPORTUNITIES**

The new building affords several concrete walls, notably at the elevator entrances, that could accommodate either a mural, using a permanent material like Keim, or possibly a small mosaic.

There are also three existing artworks on the site (considering the artworks by Mary Fuller McChesney as one artwork)

#### Robert Louis Stevenson Monument, 1894

By Bruce Porter

Bronze, gilding, on granite

H148" x W58" x D36"

Gift of a committee of citizens aided by James D. Phelan in 1897 for Portsmouth Square  
1897.2

#### Goddess of Democracy, 1990

By Thomas Marsh

Bronze on granite

H138" x W37 ½" x D37 ½"

Gift of the Goddess of Democracy Project  
1990.9

#### Tiger, Ram, Serpent, Monkey, Rabbit, Dragon, 1984

Mary Fuller McChesney

Cast Concrete

H56" x W318" x D232"

Commissioned by the San Francisco Art Commission for Portsmouth Square; Funded in part by Tamarack Foundation

#### 12 bench supports, 1 Serpent Wall and 2 Lion statues, 1999

Mary Fuller McChesney

Cast Concrete

Varies from 144" L to 15" L X 23" W to 15" W

Commissioned by the San Francisco Arts Commission for Portsmouth Square

## **AE and ARTWORK BUDGET**

- **Total AE Amount: \$104,000**
- The estimate for conserving the three existing works is between \$145,000 and \$105,000. Collections staff would need to prioritize conservation work amongst the sculptures to ensure that the project stays within the available budget. Collections staff would be able to utilize the entire budget because Collection's staff salaries are general fund.
- A new Commission would have an available implementation budget of approximately \$61,000, after deducting for project management costs, conservation reserve, artist selection costs, signage and documentation.
- 

### **Program Recommendation:**

The art enrichment budget for this project is relatively small. The most cost effective use of the funds would be for a mural treatment; the budget would be adequate to treat a portion of the elevator entry façade. A small mosaic would also be possible. However, one concern for these small projects is the Public Art Program's ability to manage them within the prescribed 20% management fee. Historically, these projects have gone over budget. The project budget may be inadequate to execute and manage the project.

The site already has three major existing artworks, making it one of the most generously endowed parks in the city. These artworks are in need of serious conservation; it would be a shame to de-install these works during construction and put them back into the new site in their current state. Given the major cut to the Collection's program's budget, there is at present no other funding for this work. We believe that the small AE budget, with concerns over being able to execute a new artwork within that budget and the fact that the site already has three major artworks, meets the criteria in the ordinance for using the funds to conserve the existing artwork.

*If the project has limited public access, or generates funds insufficient to acquire new artwork, or cannot otherwise be used judiciously for that purpose, the Arts Commission may use the entire project Art Enrichment allocation for maintenance and conservation (aggregating or transferring funds as per subsection (f) above).*

**Portsmouth Square; Comparative Budget for New Commission vs. Conservation of Existing Works**

<b>Portsmouth Square Art Enrichment Budget</b>		<b>Commissioned Artwork</b>	
Construction Budget			
Art Enrichment (2%)		\$104,000	
less Project Management		\$20,800	
Conservation Reserve		\$10,400	
<b>ART BUDGET</b>		<b>\$72,800</b>	
<b>ART PROJECT SUPPORT</b>		<b>Estimated</b>	<b>Actual</b>
Artist Selection		\$5,200	
Plaque		\$1,000	
Documentation		\$2,000	
Project Contingency		\$3,600	\$0.00
<b>TOTAL ART PROJECT SUPPORT</b>		<b>\$11,800</b>	
<b>TOTAL ART CONTRACT</b>		<b>\$61,000</b>	
<b>Artist Budget</b>		<b>Estimated</b>	<b>Actual</b>
Artist Fee		\$15,000	
Fabrication/Installation		\$43,000	
Insurance		\$3,000	
<b>Total Development and Art Budget</b>		<b>\$61,000</b>	
Difference:		\$0	

<b>Portsmouth Square AE Budget</b>		<b>Conservation of Existing Work</b>	
<b>Art Enrichment Budget</b>		<b>104,000</b>	
Project Management			
<b>Conservation Estimates</b>		<b>High End</b>	<b>Low End</b>
Robert Lewis Stevenson		\$40,000	\$35,000
Goddess of Democracy		\$40,000	\$20,000
Mary Fuller Artworks	Benches	\$35,000	\$25,000
	Zodiac Animals	\$30,000	\$25,000
<b>Total Estimate</b>		<b>145,000</b>	<b>\$105,000</b>
Difference		-41,000	-1,000



PORTSMOUTH  
S Q U A R E  
IMPROVEMENT  
P R O J E C T

CIVIC DESIGN REVIEW - COMMISSIONER'S MEETING

09/15/2020





EAST  
ELEVATION



NORTH  
ELEVATION

# EXTERIOR ELEVATIONS

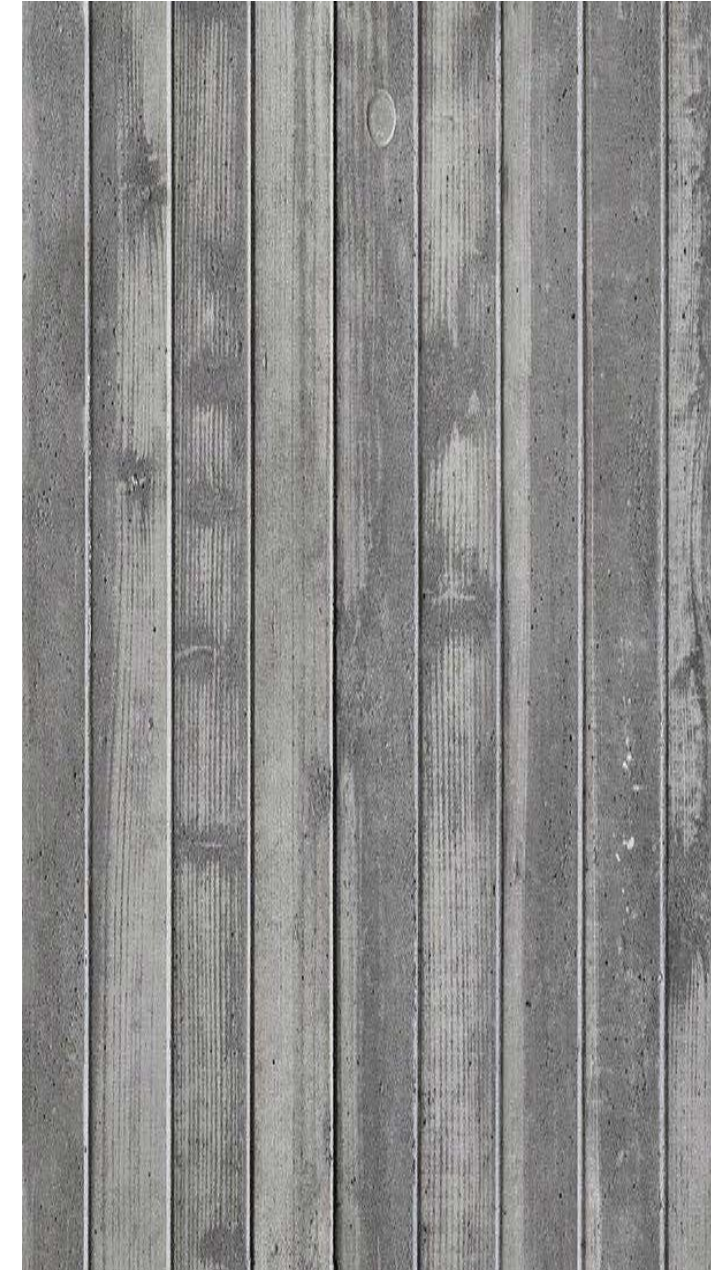


EAST  
ELEVATION



SOUTH  
ELEVATION

# EXTERIOR ELEVATIONS



## ELEVATION MATERIAL STUDY



EXTERIOR FROM WITHIN PORTSMOUTH SQUARE





EXTERIOR FROM WITHIN PORTSMOUTH SQUARE



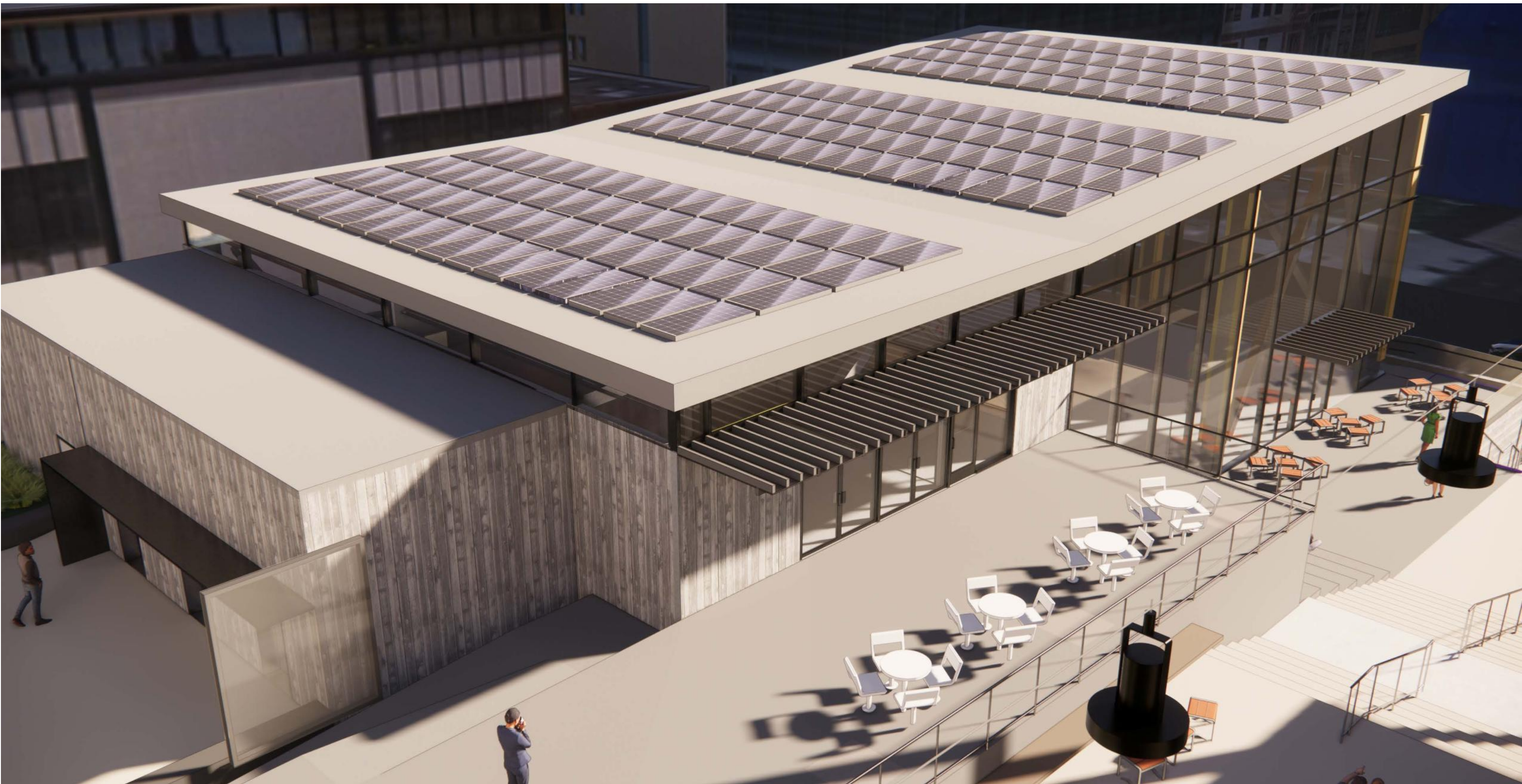
EXTERIOR FROM WITHIN PORTSMOUTH SQUARE



EXTERIOR FROM WITHIN PORTSMOUTH SQUARE



ENTRANCE OVERHANG OPTION A



ENTRANCE OVERHANG OPTION B



EXTERIOR FROM WITHIN PORTSMOUTH SQUARE



EXTERIOR FROM WITHIN PORTSMOUTH SQUARE

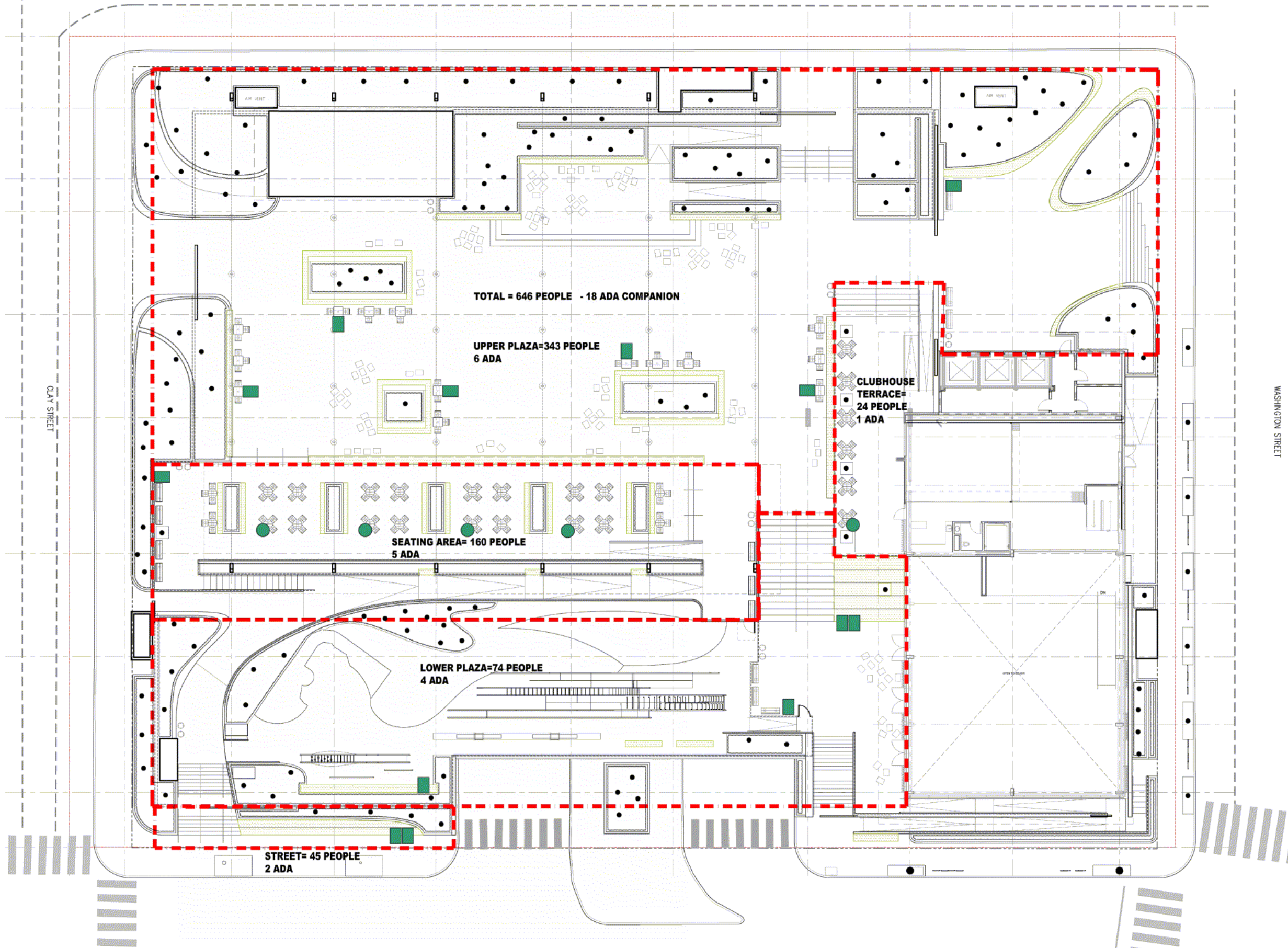


# COMMUNITY PARK SCHEMATIC PLAN - OLD

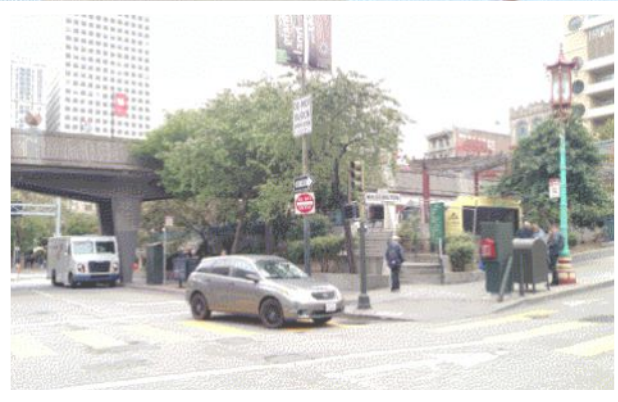




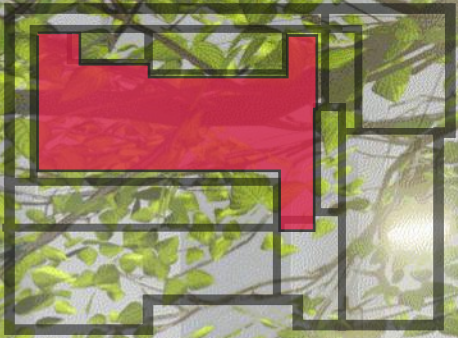
# COMMUNITY PARK SCHEMATIC PLAN - NEW



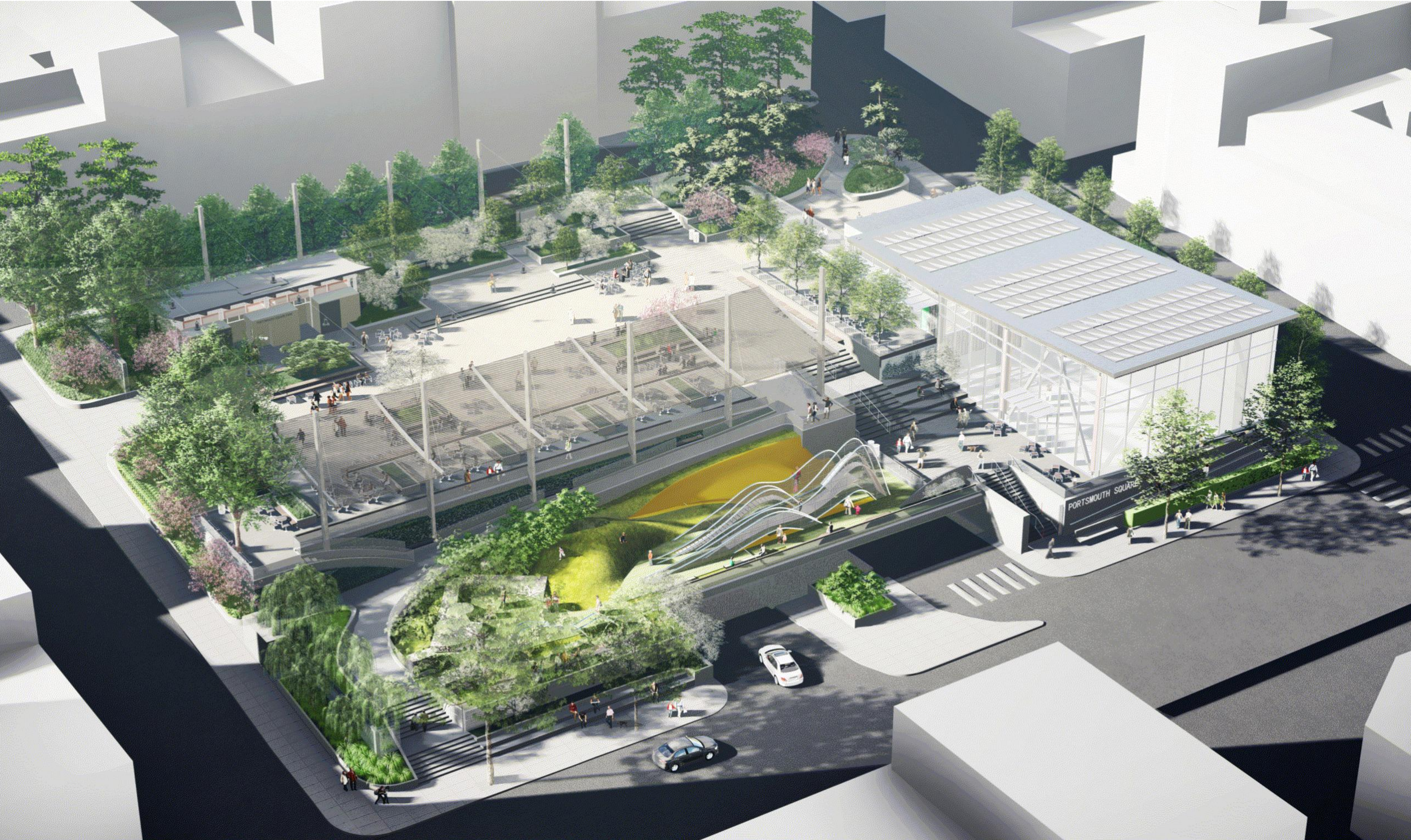
# COMMUNITY PARK SCHEMATIC PLAN - COMPANION SEATING



# WASHINGTON AND KEARNY CORNER - CLUBHOUSE



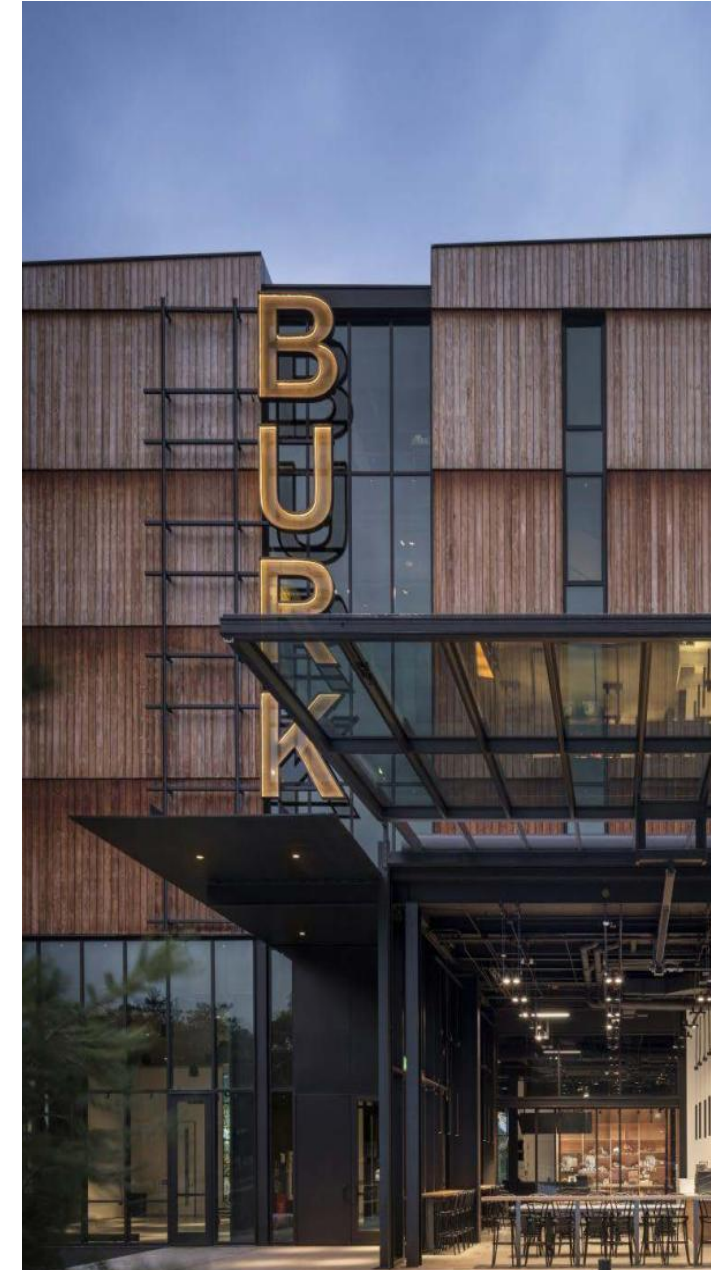
# THE COMMUNITY LIVING ROOM - CLUBHOUSE ENTRY



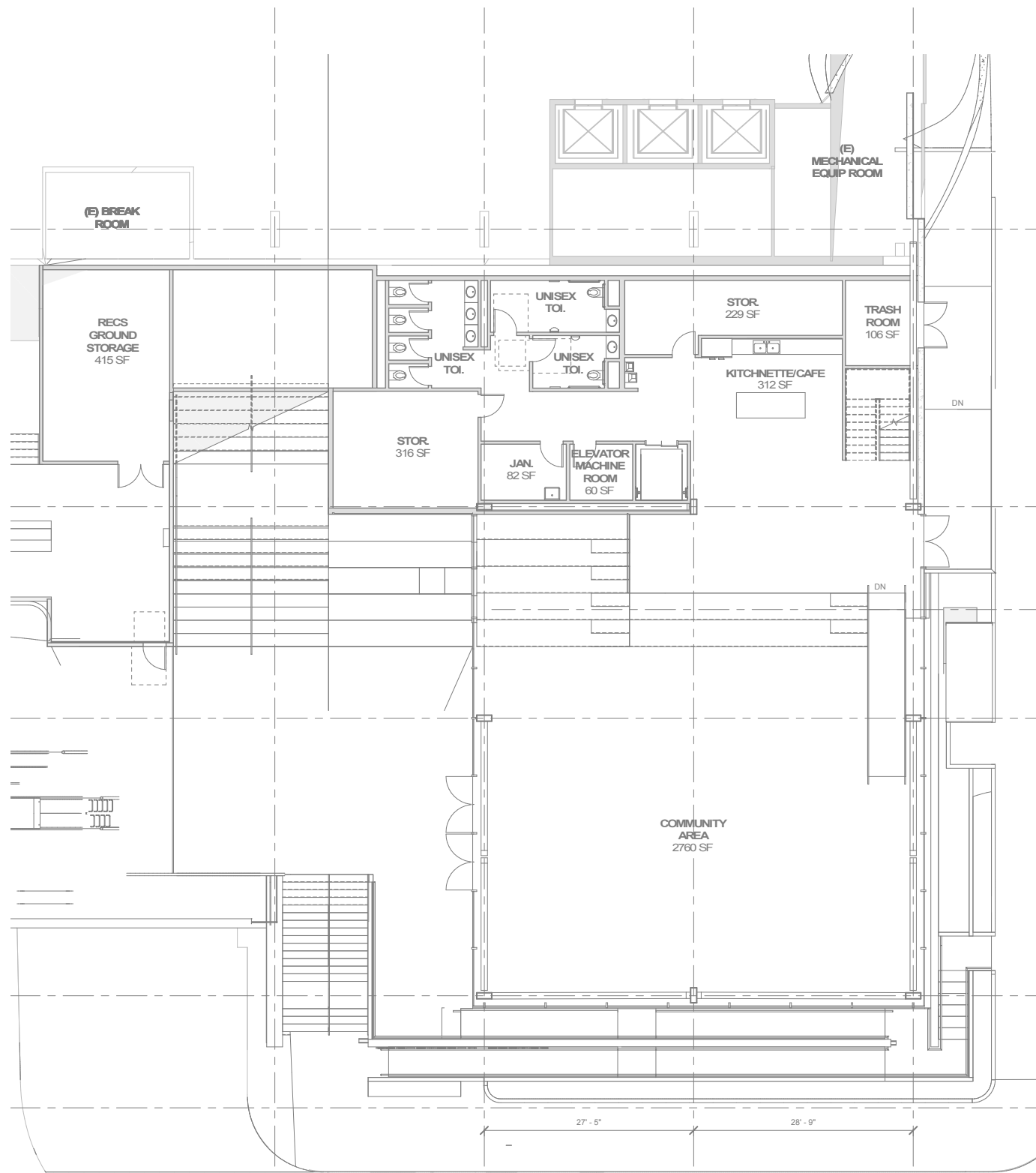
# COMMUNITY PARK AERIAL



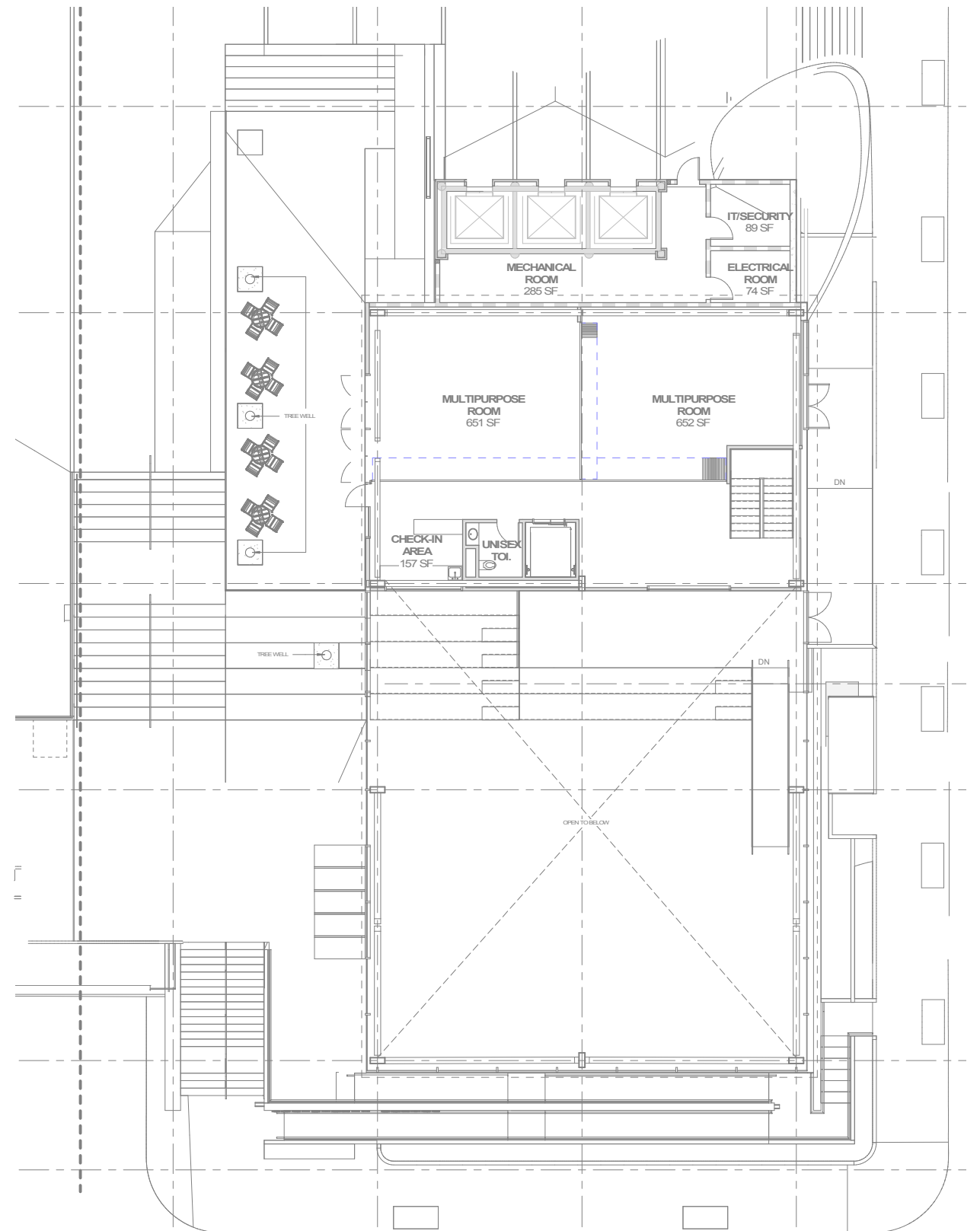
EXTERIOR FROM WITHIN PORTSMOUTH SQUARE



## ELEVATION MATERIAL STUDY

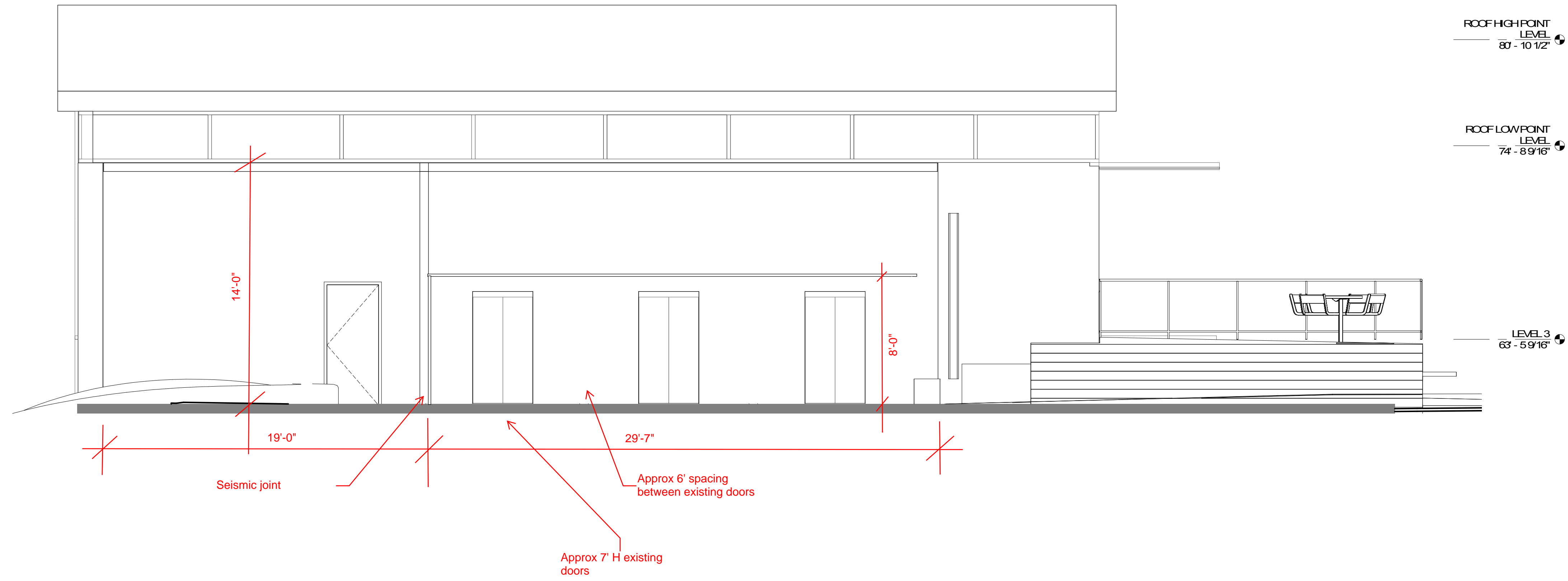


LEVEL 2 FLOOR PLAN



LEVEL 3 FLOOR PLAN





**To: Visual Arts Committee**

**Date: Oct. 15, 2020**

**RE: Cost Estimates for Conservation Needs on Existing Artworks at Portsmouth Square**

The following is an estimate of the rough order of magnitude (ROM) for the conservation needs of the following artworks in the Civic Art Collection at Portsmouth Square. Caveat: These estimates assume no major structural issues, no other underlying issues, and no damage due to construction/relocation.

Robert Louis Stevenson Monument, 1894

By Bruce Porter

Bronze, gilding, on granite

H148" x W58" x D36"

Gift of a committee of citizens aided by James D. Phelan in 1897 for Portsmouth Square

1897.2

Description: A simple granite shaft surmounted by a galleon in full sail (The Hispaniola of Treasure Island) through waves with fish. Excerpts from Stevenson's "Christmas Sermon" inscribed on shaft. This is the first monument erected anywhere to Stevenson, a poet and novelist who came to California from Scotland in 1879. The monument was relocated once within the park, in 1959.

Conservation would include cleaning of bronze and granite elements, and reapplication of gold gilded coatings on both stone lettering and bronze sculpture. Application of protective coatings.

**ROM Estimate: \$35 - \$40k**

Goddess of Democracy, 1990

By Thomas Marsh

Bronze on granite

H138" x W37 ½" x D37 ½"

Gift of the Goddess of Democracy Project

1990.9

Description: Depicts an allegorical figure of democracy akin to the plaster sculpture of the June 4, 1989 uprising in Tiananmen Square in Beijing, China.

Conservation would include cleaning of bronze and granite elements, and possible patina restoration. Application of protective coatings.

**ROM Estimate: \$20 - \$25k (with no patina restoration); \$35-\$40k (with patina restoration during de-install)**

Tiger, Ram, Serpent, Monkey, Rabbit, Dragon, 1984

Mary Fuller McChesney

Cast Concrete

H56" x W318" x D232"

Commissioned by the San Francisco Art Commission for Portsmouth Square; Funded in part by Tamarack Foundation

1985.14.1-6

Description: Stylized animal sculptures, which represent symbols in Chinese astrology, are integrated into the Tot Lot play structure. Each animal is inscribed with its generic name in both English and Chinese. During restoration work and addition of new cast concrete works by the artist circa 1996, the most badly damaged sculptures (the Tiger and the Monkey) were removed by the contractor

Conservation would include cleaning and use of poultices (if necessary) to remove previous vandalism and ghosting on the concrete. Repairs to chipped concrete/spalling if found. Application of protective coatings.

**ROM Estimate: \$25 - \$30k**

12 bench supports, 1 Serpent Wall and 2 Lion statues, 1999

Mary Fuller McChesney

Cast Concrete

Varies from 144" L to 15" L X 23" W to 15" W

Commissioned by the San Francisco Arts Commission for Portsmouth Square

1999.19.1-15

Description: Two cast concrete lion sculptures, a serpent wall, and 12 cube bench supports depicting twelve animals of the Chinese zodiac in relief integrated with the previous work of the artist to enhance the Portsmouth Tot Lot.

Conservation would include cleaning and use of poultices (if necessary) to remove previous vandalism and ghosting on the concrete. Repairs to chipped concrete/spalling if found. 12 benches have tops/seating that appear to be wood. Consider re-fabrication or restoration of wood bench tops. Application of protective coatings.

**ROM Estimate: \$25 - \$30k; \$30-\$35k (with re-fabrication of bench-tops)**

Side note: The artist, Mary Fuller McChesney, is still alive, and her 98<sup>th</sup> birthday is next week on October 20. Something to keep in mind as we move through this process.