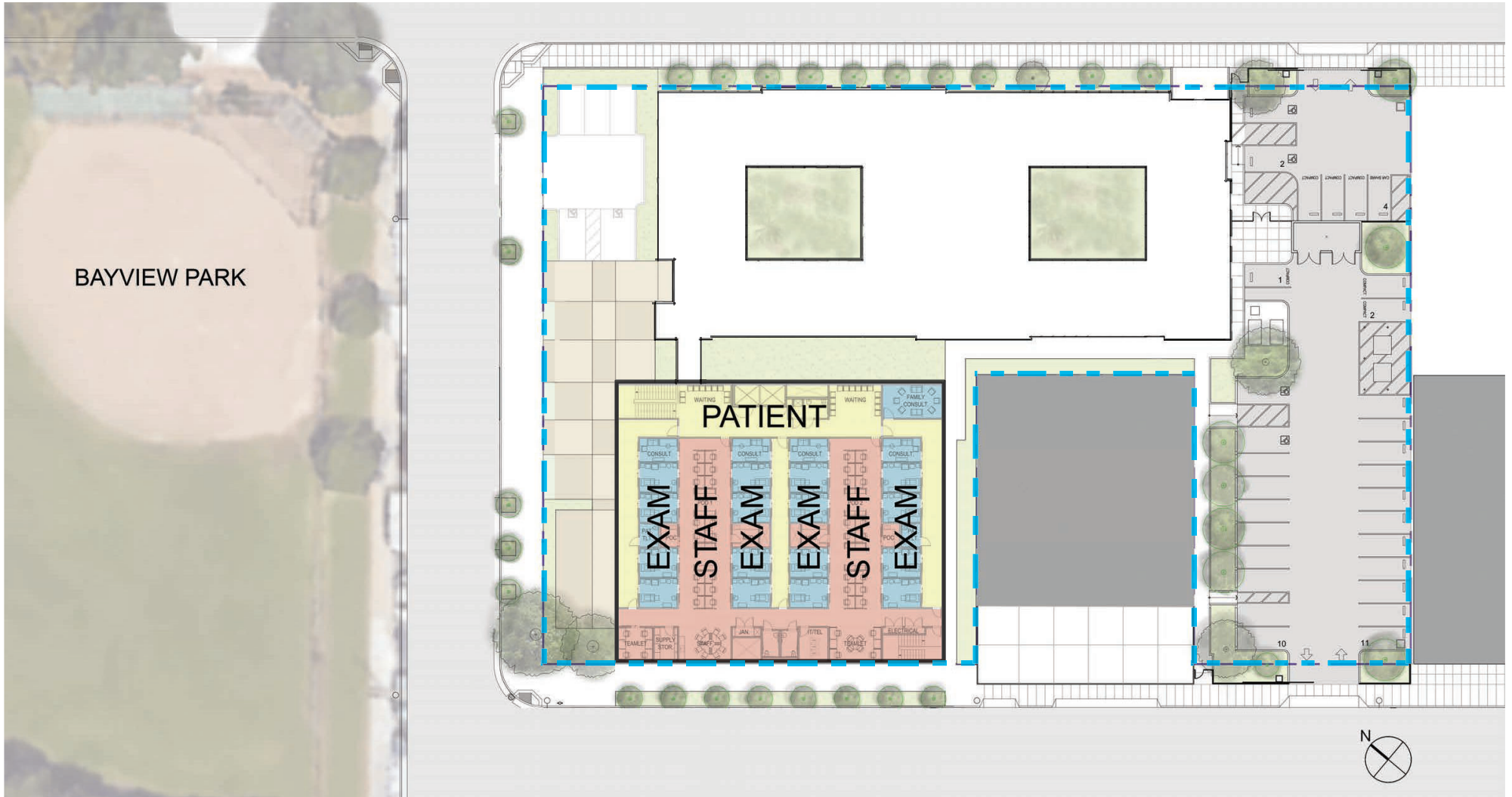


# Southeast Health Center Expansion

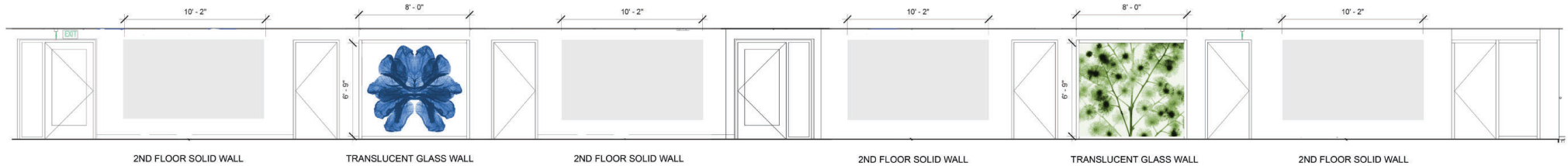
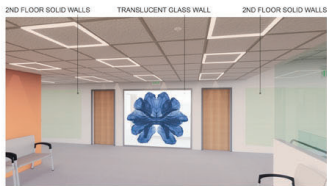
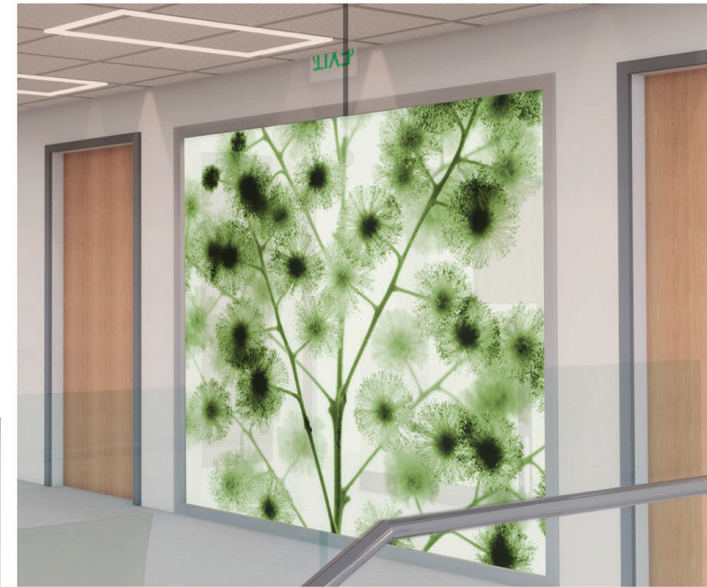
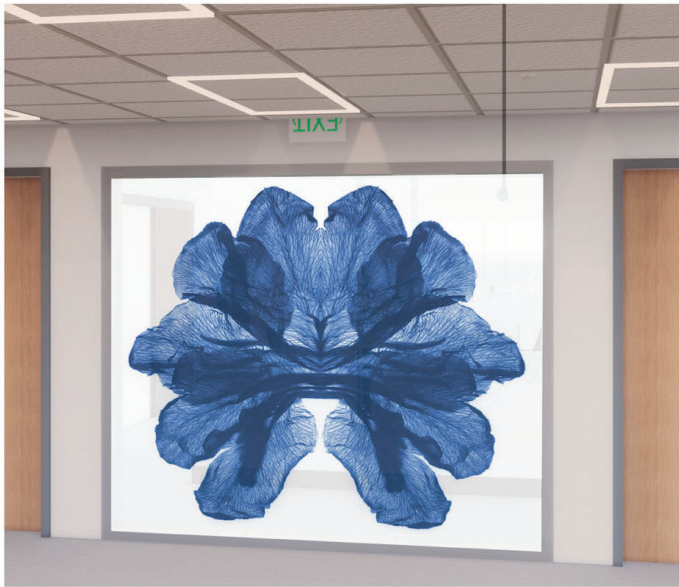


# PROPOSED SECOND FLOOR PLAN



# Art Proposal for The Southeast Health Center Expansion

Ron M. Saunders



## MEDICINAL PLANTS



ECHINACEA      DODONEA      ACACIA      SALVIA      GLADIOLA      PINCUSHION

The photogram images of medicinal plants created for this proposal seek to provide a comfortable, welcoming and inspirational environment for visitors and staff in the Southeast Health Clinic expansion building. At first, the viewers will delight in the beauty of the images themselves. As their curiosity is engaged by the uniqueness of the photogram image, they may come closer to read the short description provided. This will remind them that nature is healing in its beautiful and pragmatic qualities. As examples, the green African Acacia shown on one of the panels is traditionally used for bleeding, bronchitis and upper respiratory infections, and Gladiola which is native to Africa, is used for a variety of ailments such as, constipation, colds, hemorrhoids and epilepsy.

The Bayview is one of the best places to grow plants due to its sunny and temperate climate. For many years the African American community of Bayview Hunters Point did not have adequate access for healthcare for low income residents of the area. The Southeast Health Center opened in 1979 to provide affordable healthcare to people of all ages in the Bayview area. This artwork will create space for dialogue about the community's past and present history.

The photographic images are created employing the photogram process. Photograms are photographs made without the use of a camera. This 19th century photographic process has an immediacy, and rawness and truth that are more primal than images created with a camera.

I place plant material on the surface of silver-based photographic paper, and then the paper is exposed to light emitted from an enlarger to create a shadowy silhouette image. The unique images are scanned and colorized using Photoshop to create digital cyanotypes.

The photograms will be reproduced on film interlayer material and sandwiched between plates of glass or direct print to glass. The artwork will allow light to penetrate into the staff area behind the glass. The amount of light transmitted into the staff area can be adjusted by screening the opacity of the film.

I enjoy a multifaceted role in this project as artist, lead designer and creator of all art images, as well as project coordinator between subcontractors. The subcontractor's I will be working with are: Light Source Imaging, San Francisco, CA and Pulp Studio in Los Angeles, CA. The timeline for this project will correspond with the construction schedule of the Southeast Health Center Expansion.



EXIT

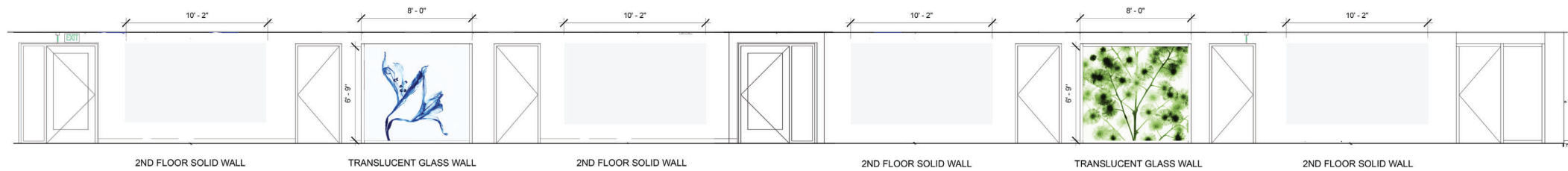


2ND FLOOR SOLID WALLS

TRANSLUCENT GLASS WALL

2ND FLOOR SOLID WALLS





2ND FLOOR SOLID WALL

TRANSLUCENT GLASS WALL

2ND FLOOR SOLID WALL

2ND FLOOR SOLID WALL

TRANSLUCENT GLASS WALL

2ND FLOOR SOLID WALL