



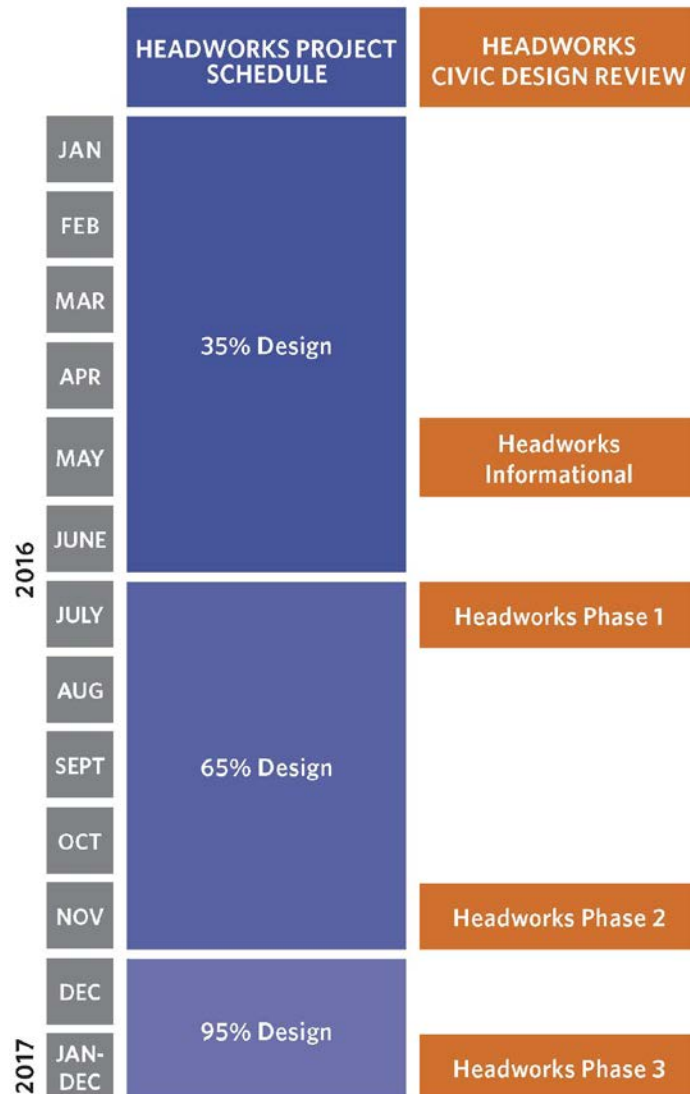
mwa architects



Civic Design Review Phase 1 Schematic Design

SEP 020 Headworks Project
July 18, 2016

Project Schedule

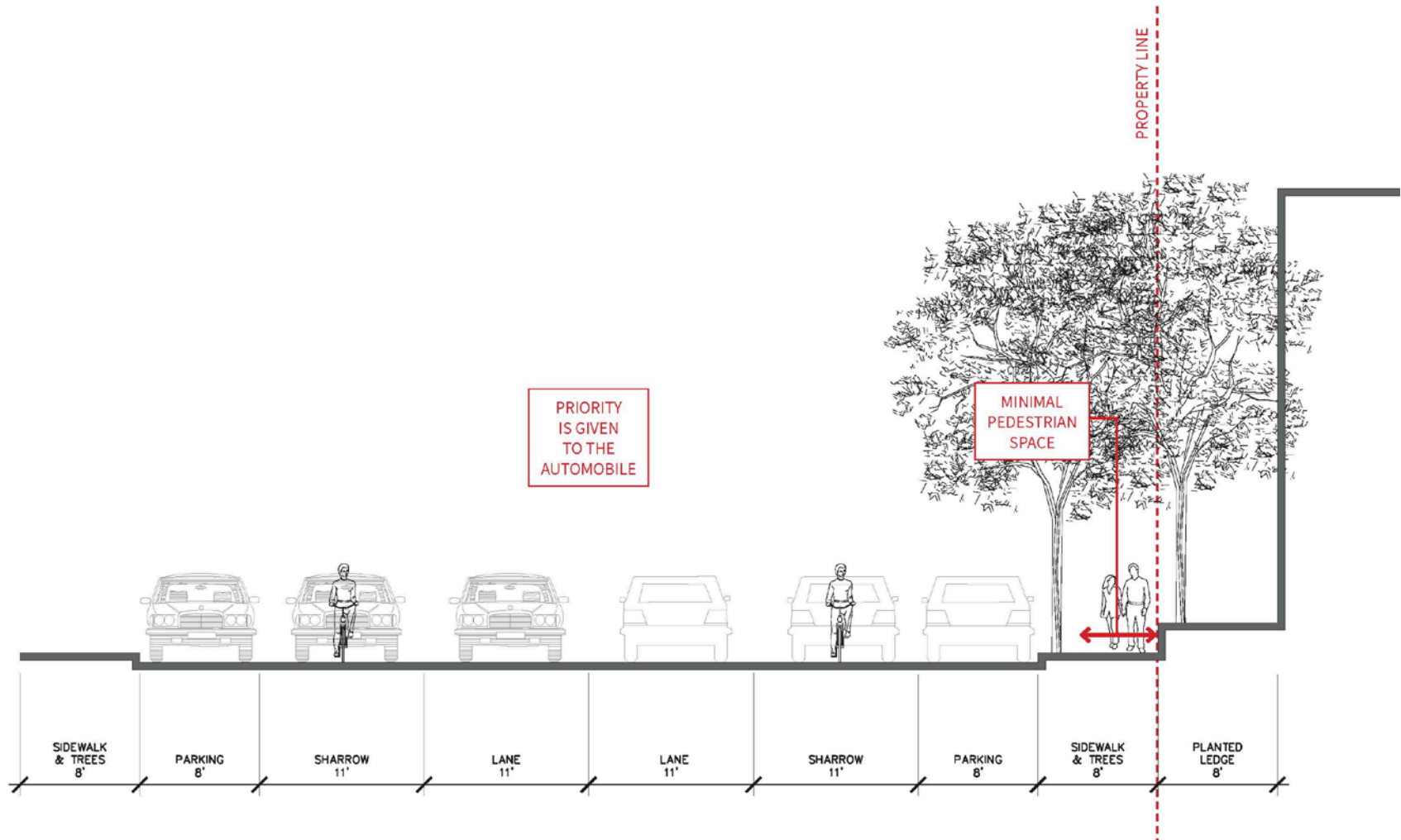


- CDR Application Submitted – May 3, 2016
- CDR Informational Meeting – May 16, 2016
- CDR Informal Meeting – June 29, 2016
- CDR Phase 1 Meeting – July or August, 2016

Existing Conditions – Evans Avenue



Existing Conditions – Evans Avenue



Public Outreach - Process

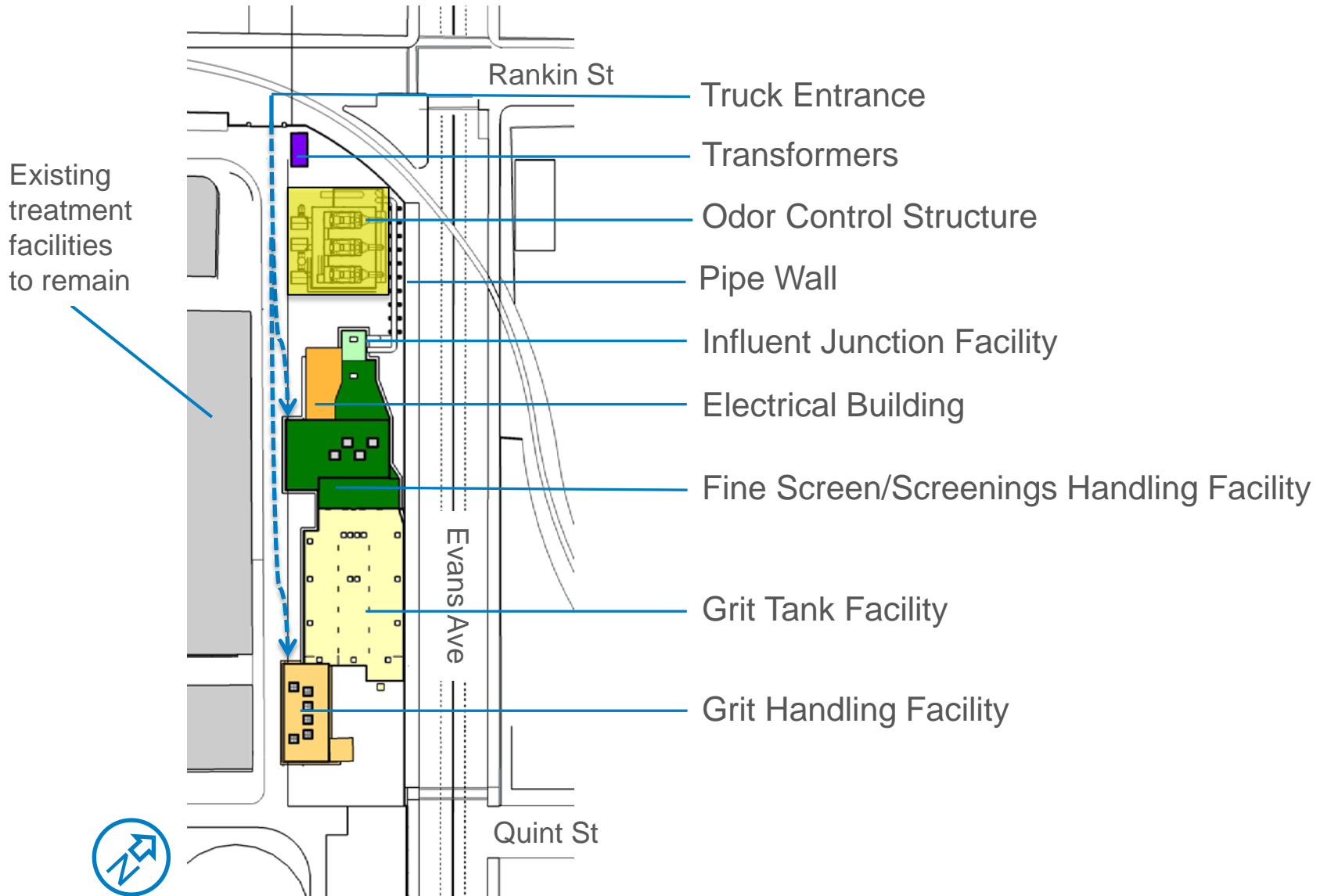
The Headworks and Biosolids Teams have made presentations to dozens of groups within the Hunters Point and Bayview neighborhoods including:

- SFPUC Citizens Advisory Committee
- Bayview/Hunters Point Citizens Advisory Committee
- Southeast Working Group
- Southeast Community Facility Commission
- SFPUC Wastewater Citizens Advisory Committee
- Southern Waterfront Advisory Committee
- Young Community Developers
- Additional religious and homeowners groups



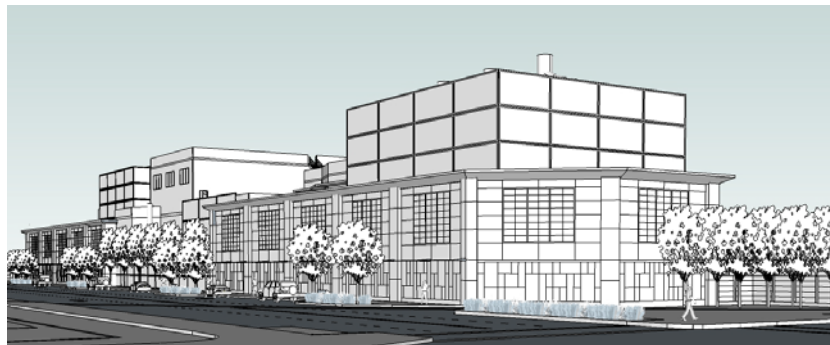
- SEWER SYSTEM IMPROVEMENT PROGRAM | Grey. Green. Clean.

Site Plan



Design Progression

From Informational CDR to Gallery Scheme



Informal CDR version



Preferred Revised Option 1

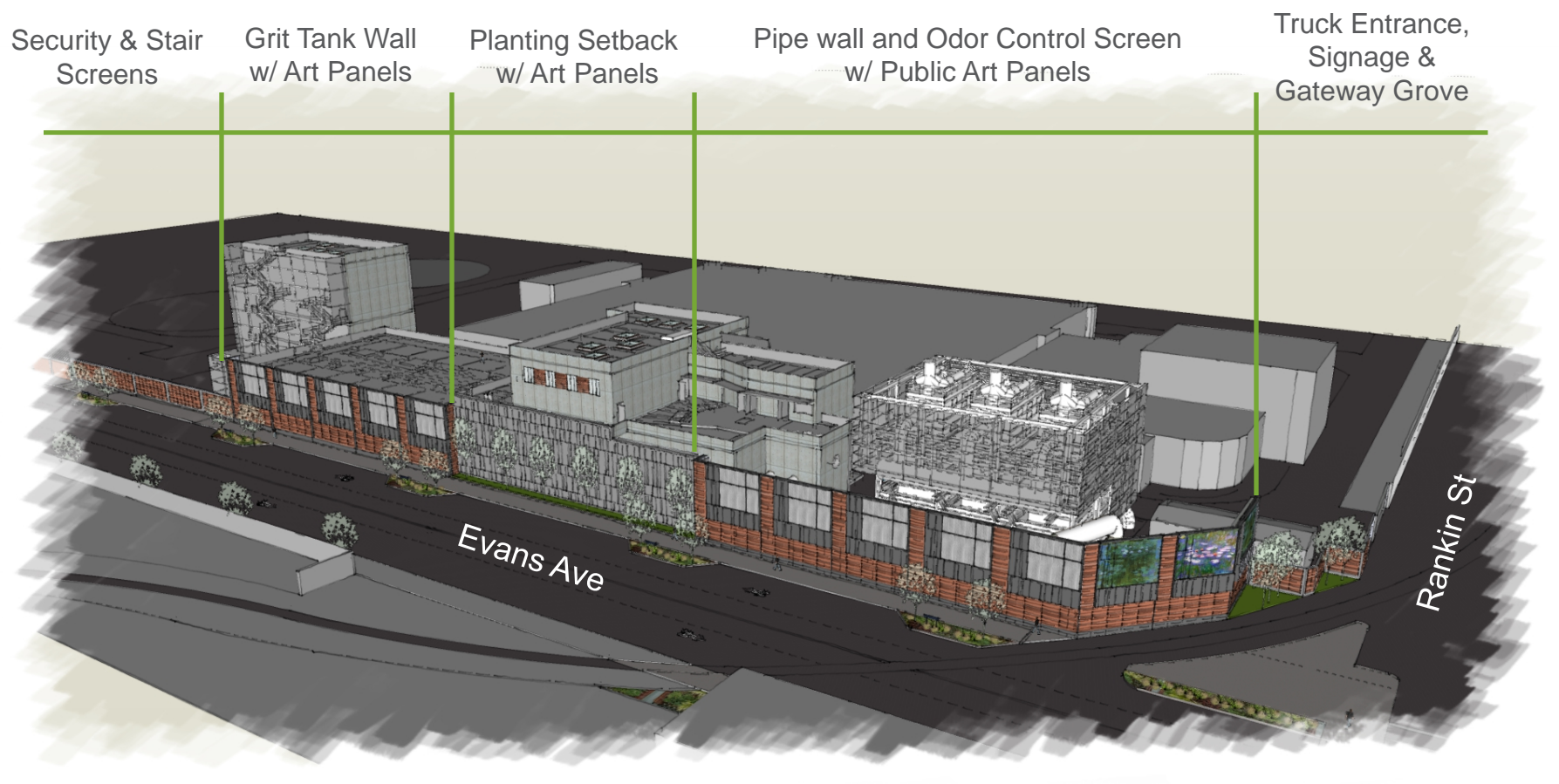


Option 1a



Option 1b: becomes Gallery Scheme

Gallery Scheme



Elevated view looking South

Gallery Scheme

Pipe & Gallery Wall and Odor Control Screen



Looking Southeast from Evans Ave. at Rankin St.



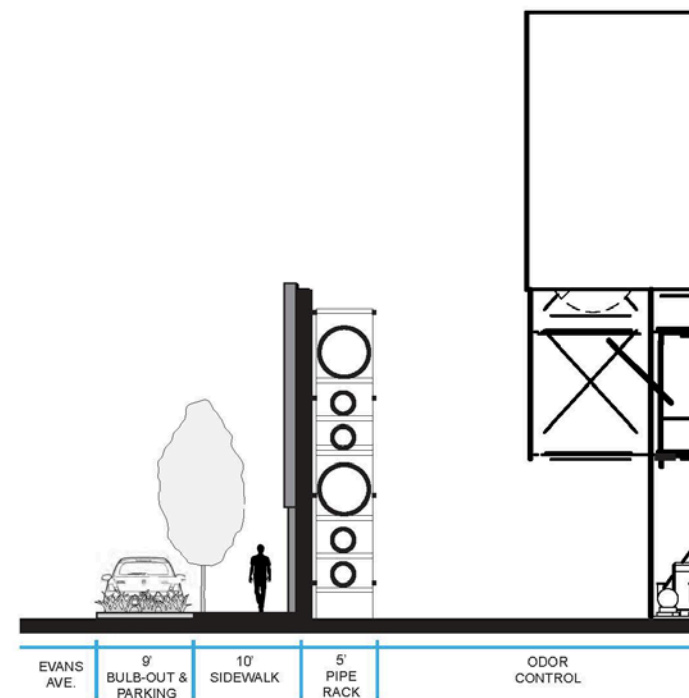
Looking East from Rankin St. at Evans Ave.

Gallery Scheme

Pipe Wall



Looking East from sidewalk on Evans Ave.



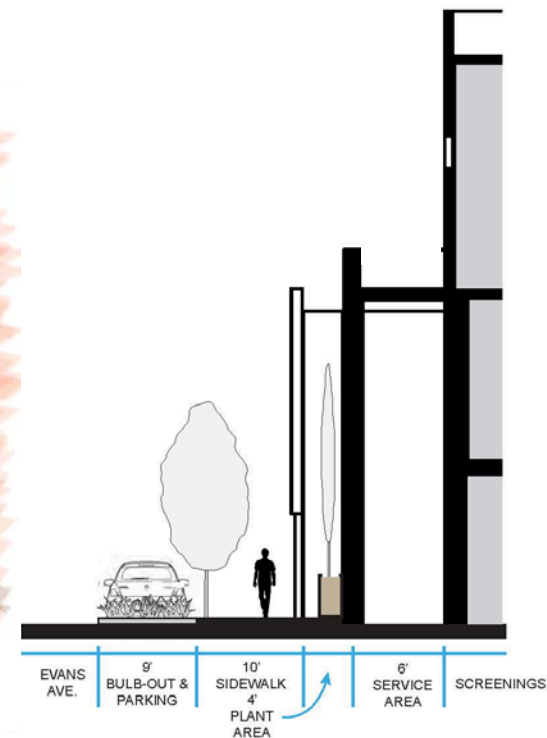
Pipe wall section

Gallery Scheme

Planted Setback Wall



Looking East from sidewalk on Evans Ave.



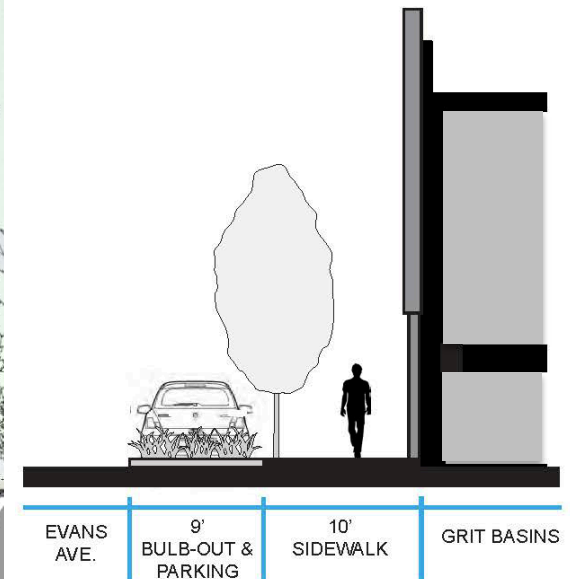
Setback wall section

Gallery Scheme

Grit Tank Wall



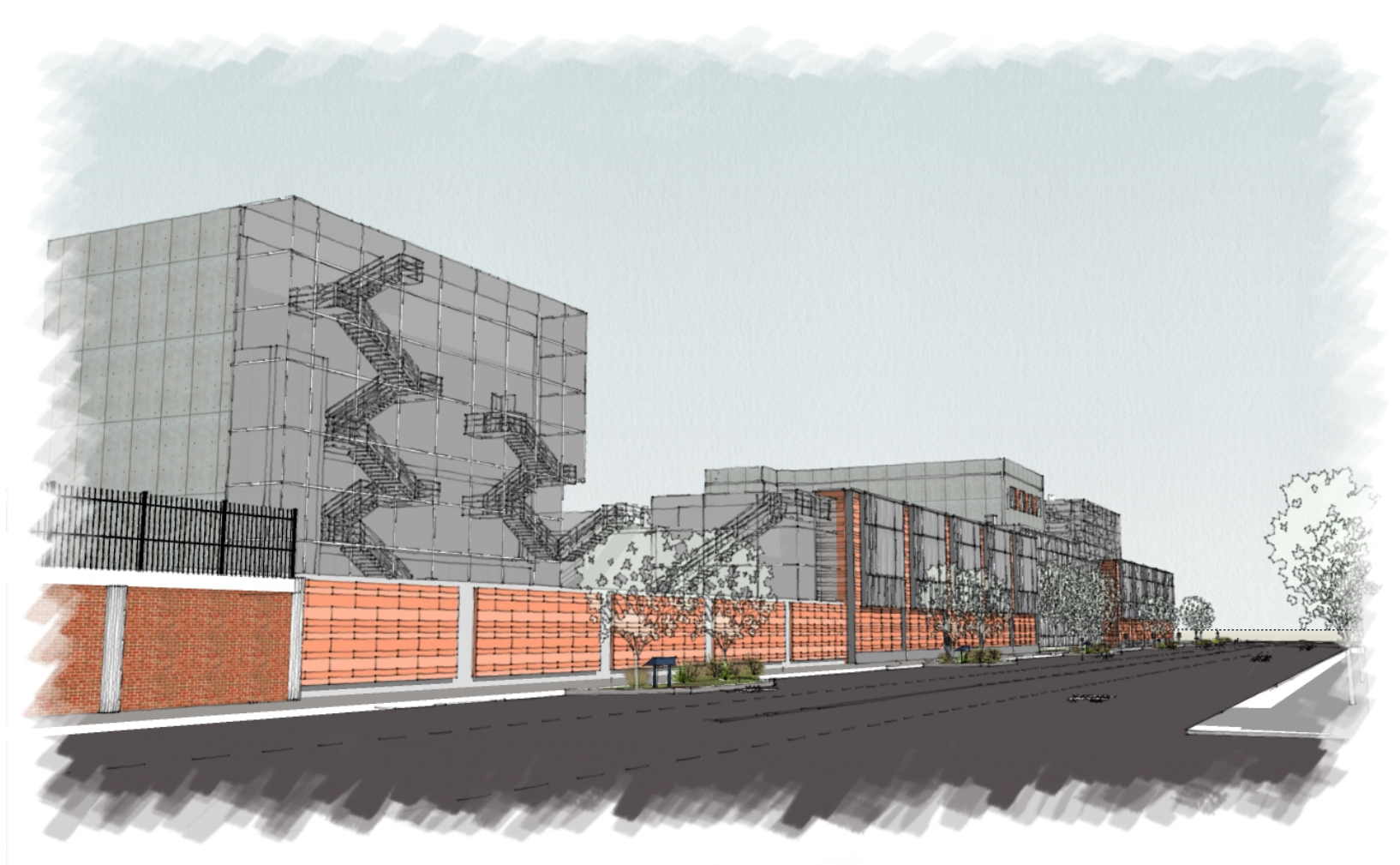
Looking West from sidewalk on Evans Ave.



Grit Tank wall section

Gallery Scheme

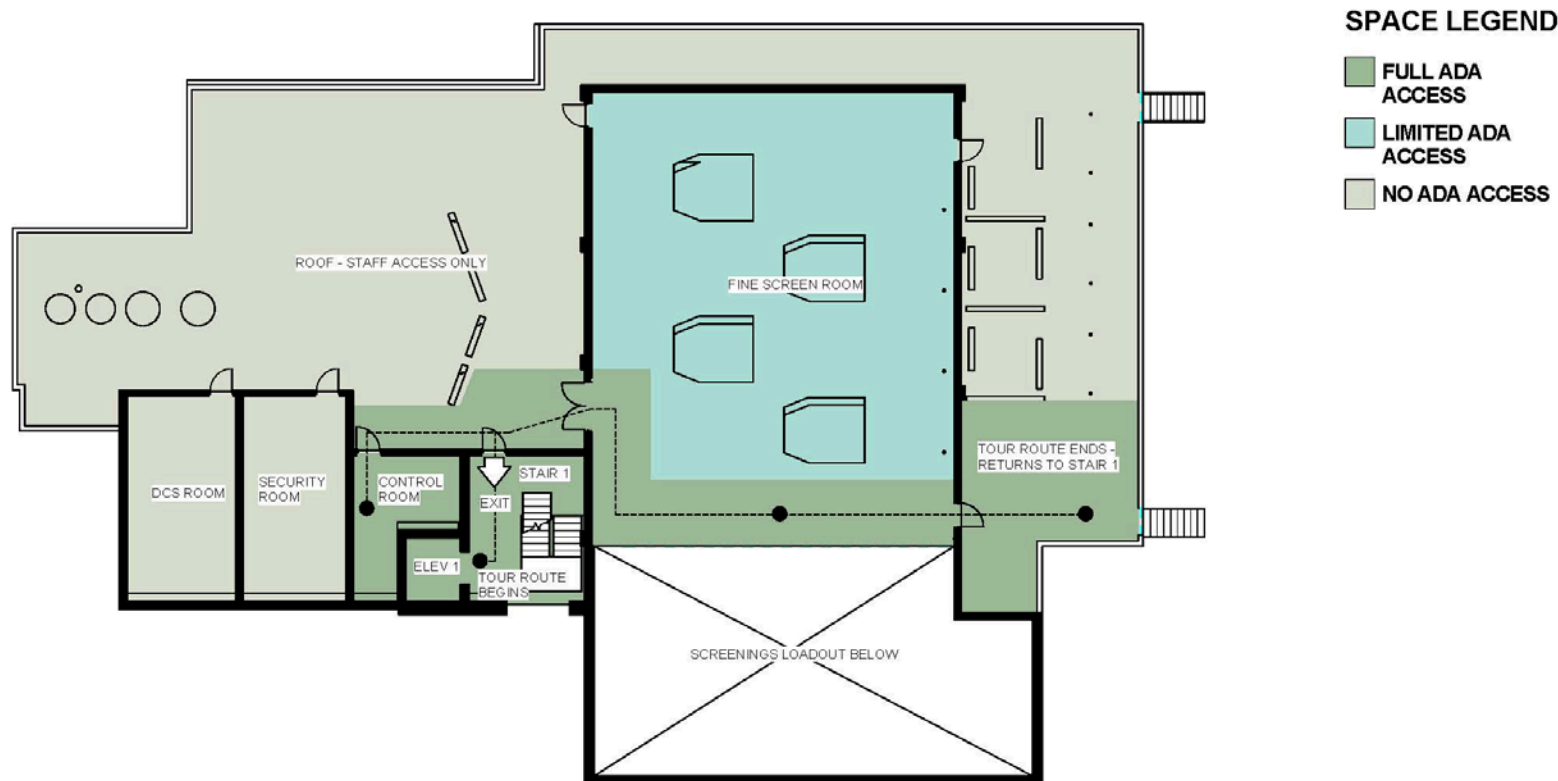
Grit Handling Stair Screens



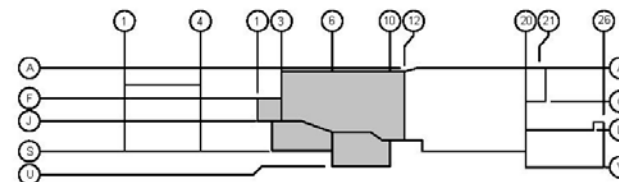
Looking West from sidewalk on Evans Ave. at Quint St.

Gallery Scheme

Tour Route through Electrical & Screenings Facility



Electrical & Screenings Facility
Third Floor/Roof Plan

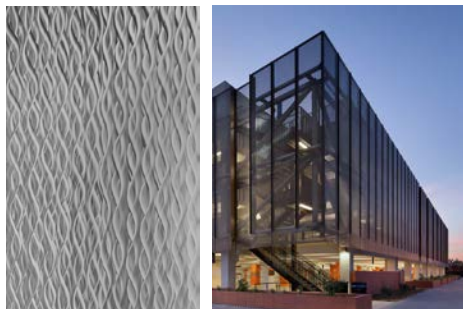


Key Plan

Gallery Scheme

Material Palette

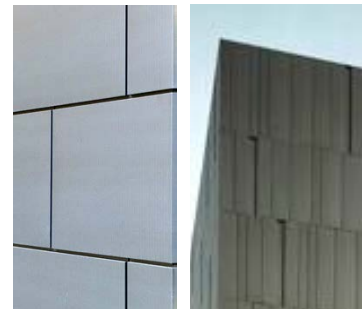
① Perforated Metal Screens



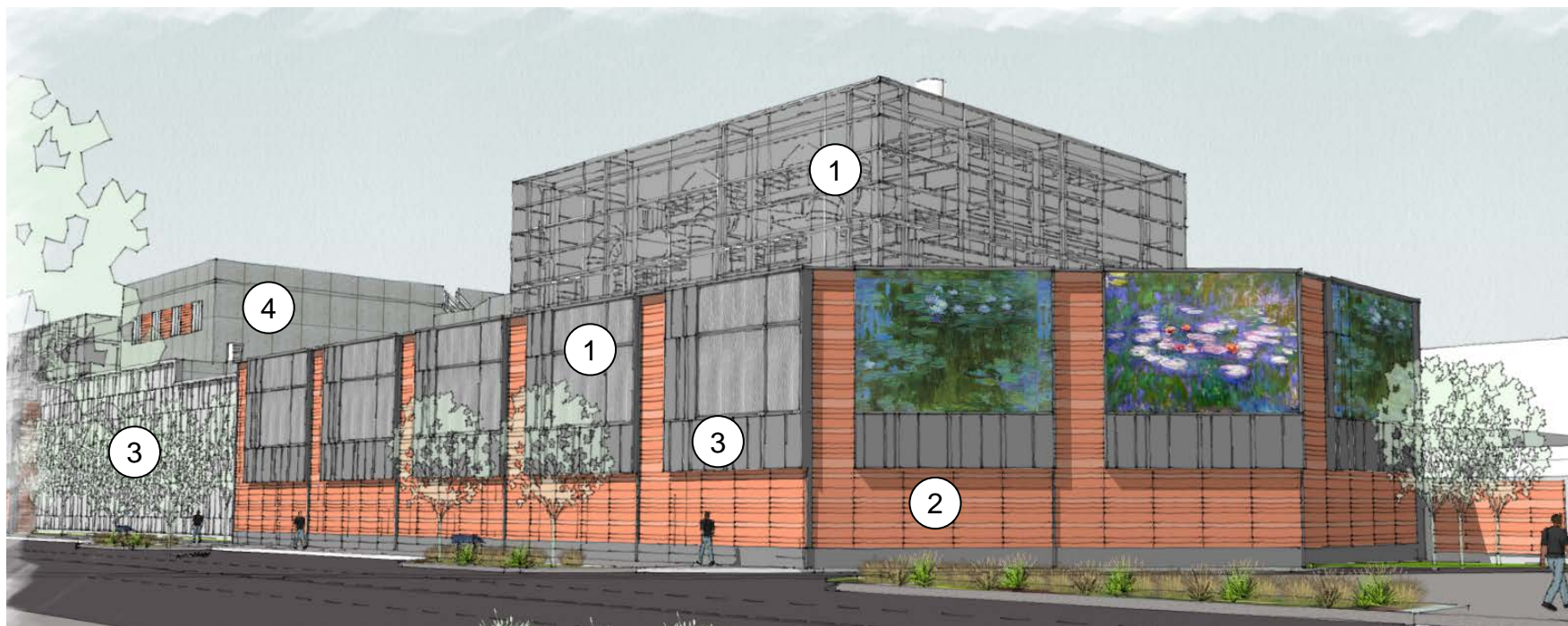
② Fiber Cement / Terra Cotta



③ Metal Panels



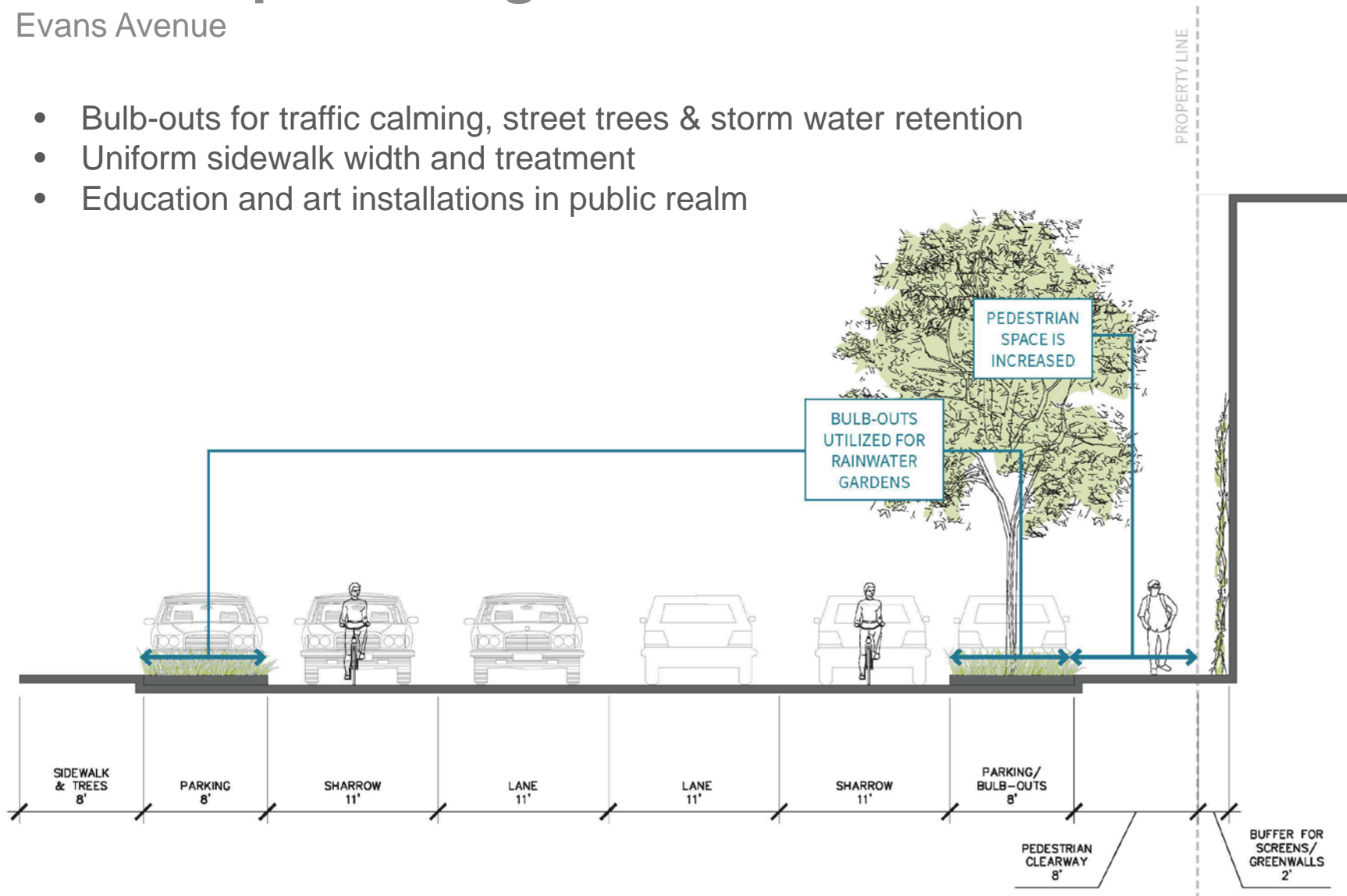
④ Cast-in-Place Concrete



Landscape Strategies

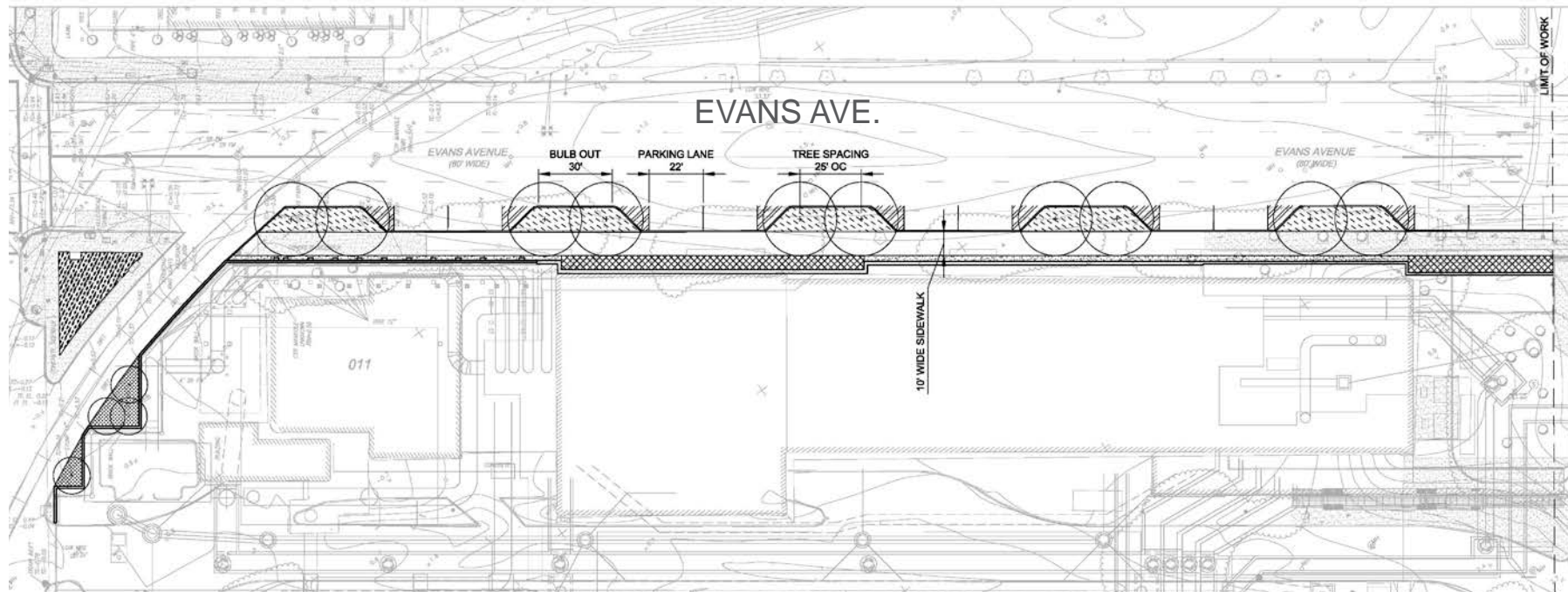
Evans Avenue

- Bulb-outs for traffic calming, street trees & storm water retention
- Uniform sidewalk width and treatment
- Education and art installations in public realm



Landscape Strategies

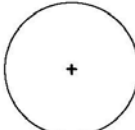

Planting Plan



PLANTING LEGEND:

-  2146 SQ. FT. BIORETENSION PLANTING
-  1129 SQ. FT. GREEN SCREEN PLANTING
-  798 SQ. FT. BUFFER PLANTING
-  680 SQ. FT. MEDIAN PLANTING
-  425 SQ. FT. ENTRYWAY PLANTING

TREE LEGEND:

-  10 X STREET TREES
-  4 X ORNAMENTAL TREES



Thank You

