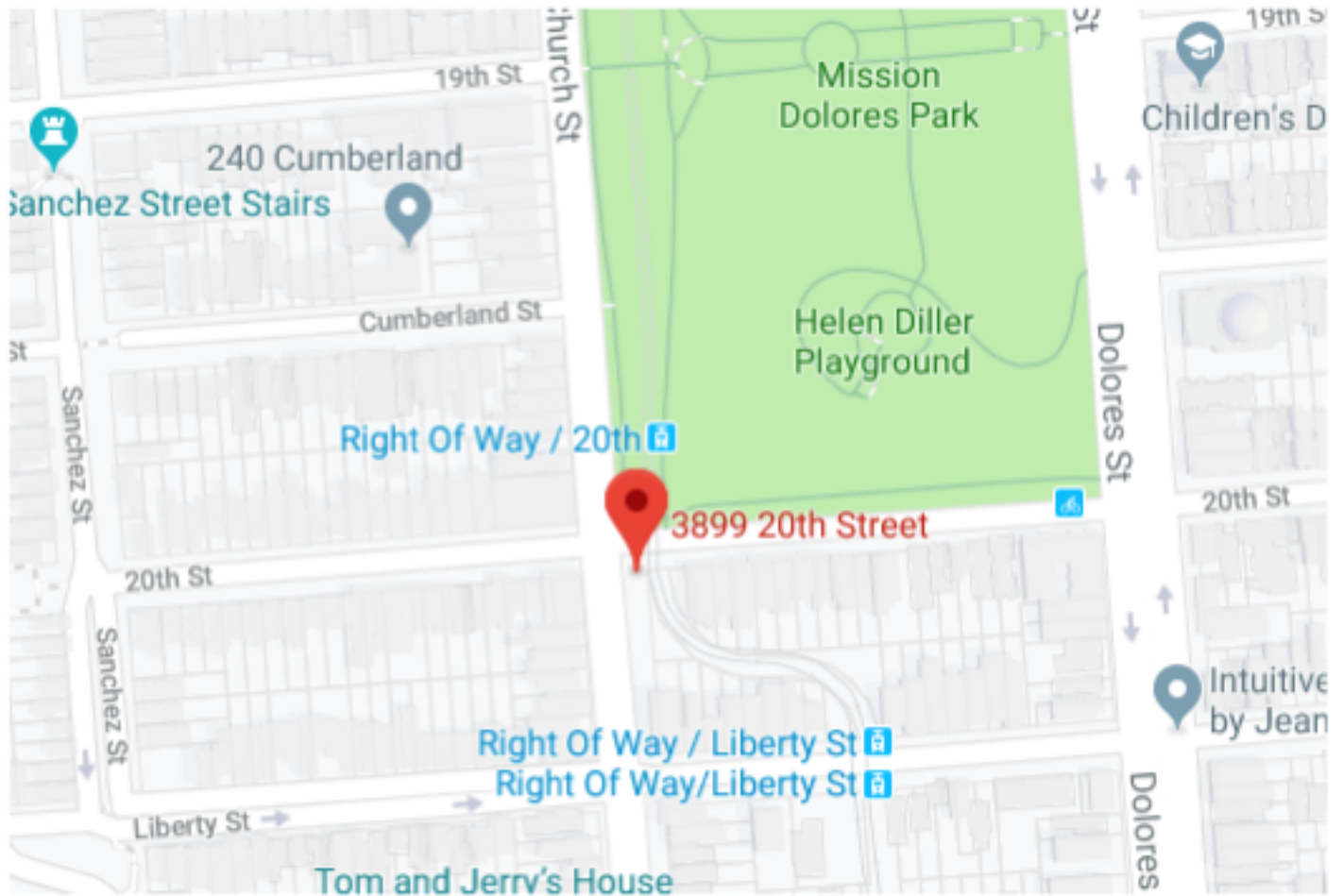


**LOCATION AND INSTALLATION DETAILS
FOR PROPOSED PLAQUES
FOR SAN FRANCISCO'S
THREE MOST FAMOUS FIRE HYDRANTS**

THE GOLD HYDRANT

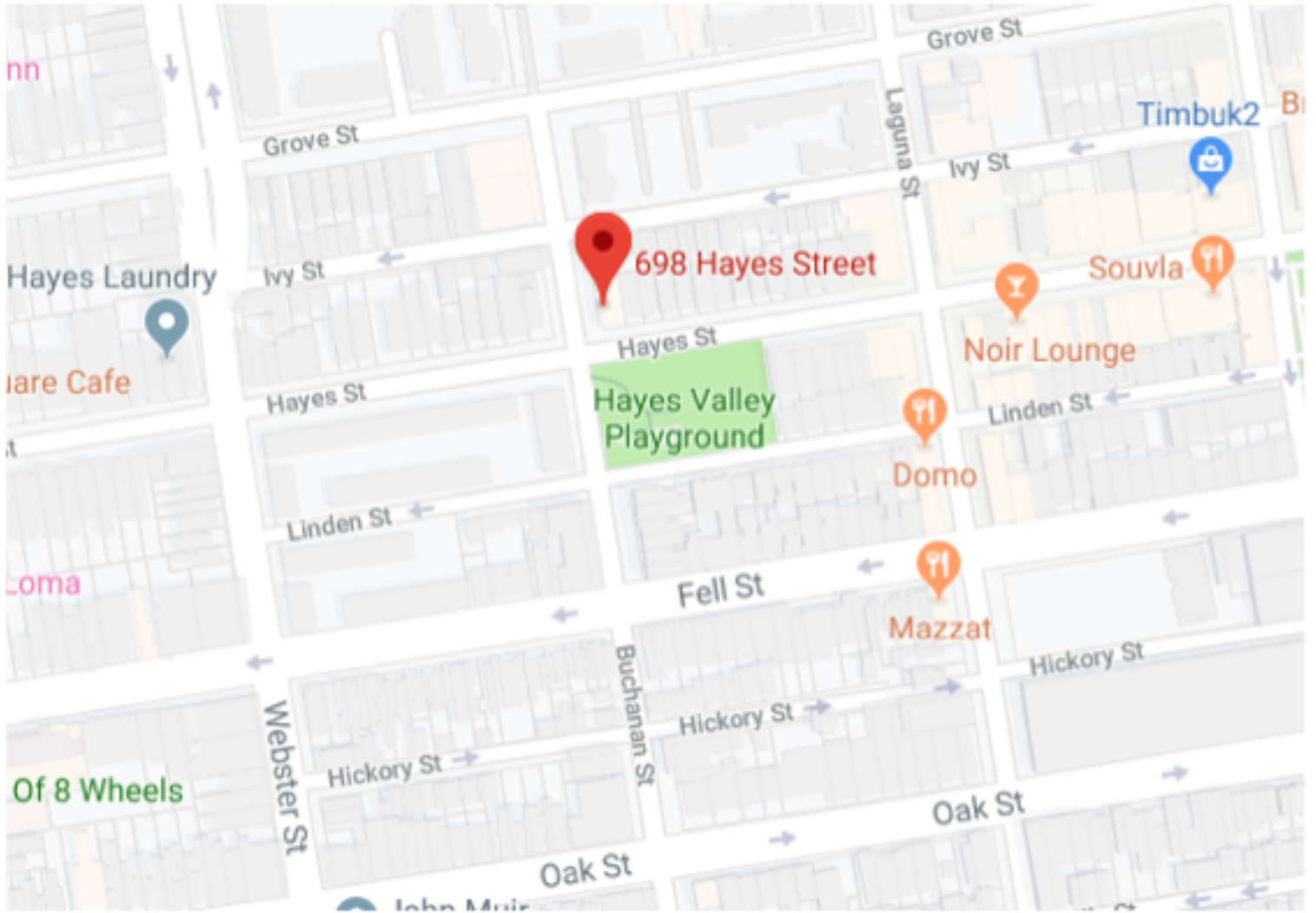
3899 20th Street

On the southeast corner of 20th and Church Streets.
(Surprisingly the Gold Hydrant has its own address)



**A SILVER TWIN HYDRANT
698 HAYES STREET**

On the northeast corner of Hayes and Buchanan Streets



**A SILVER TWIN HYDRANT
900 ELLIS STREET**

On the northwest corner of Ellis Street and Van Ness Ave.



**LOCATION AND INSTALLATION DETAILS
RENDERINGS OF PLAQUE IN PROPOSED LOCATIONS**

THE GOLD HYDRANT

3899 20th Street

On the southeast corner of 20th and Church Streets.

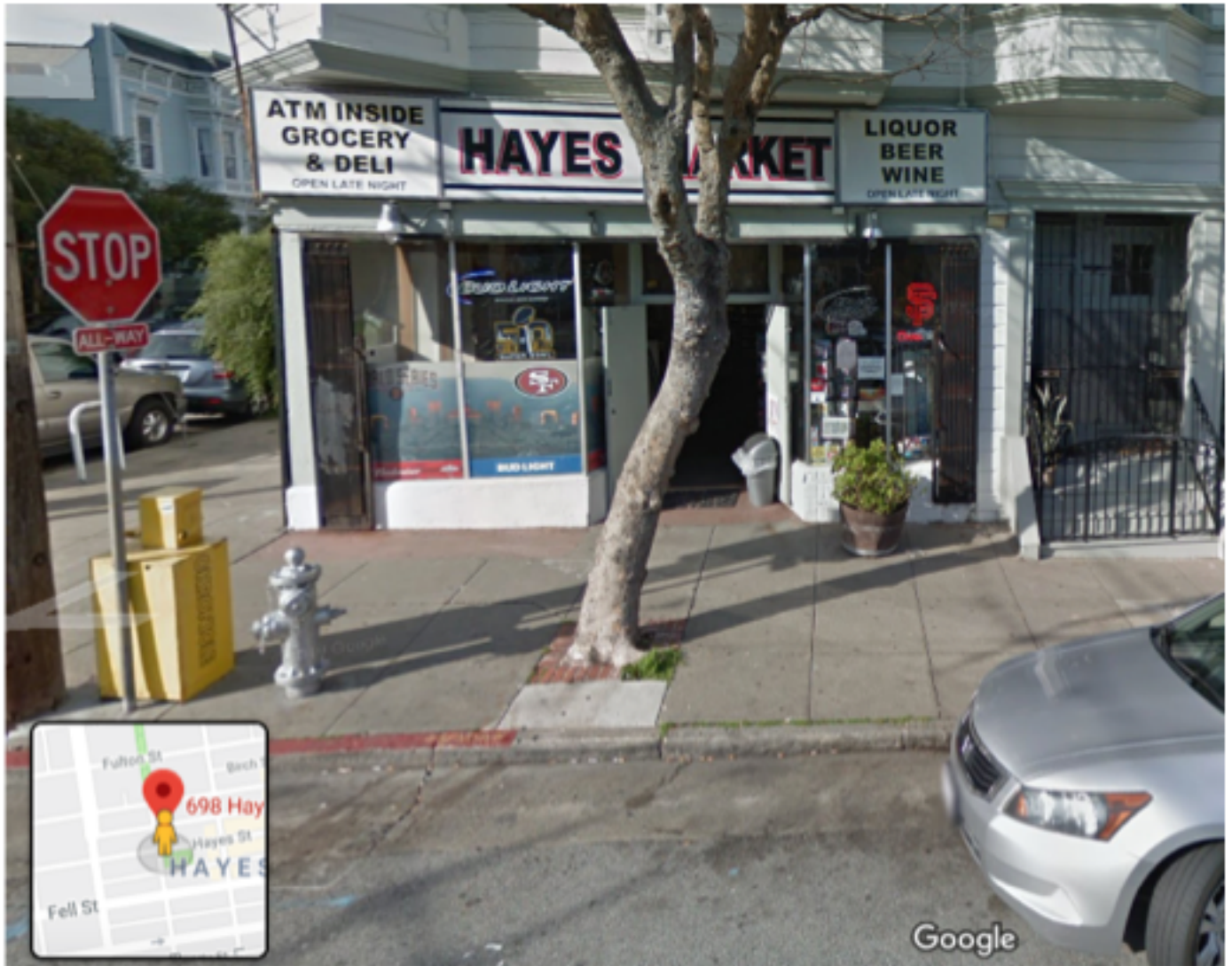




The plaque will be placed to the right of the hydrant as shown in this photo. The actual measurement from the hydrant, and from the curb, will be determined by the DPW as these hydrants are in service and may at some time require pipeline repairs.

**A SILVER TWIN HYDRANT
698 HAYES STREET
On the northeast corner of Hayes and Buchanan Streets**





The plaque will be placed to the right of the hydrant as shown in this photo. The actual measurement from the hydrant, and from the curb, will be determined by the DPW as these hydrants are in service and may at some time require pipeline repairs

**A SILVER TWIN HYDRANT
900 ELLIS STREET
On the northwest corner of Ellis Street and Van Ness Ave.**





The plaque will be placed to the right of the hydrant as shown in this photo (near the orange marker). The actual measurement from the hydrant, and from the curb, will be determined by the DPW as these hydrants are in service and may at some time require pipeline repairs

(Proposed Plaque Text)

THE GOLD HYDRANT

3899 20th Street

On the southwest corner of 20th and Church Streets.

THE GREAT EARTHQUAKE & FIRE

April 18-21, 1906

THE GOLD HYDRANT - THE LITTLE GIANT

The 1906 Earthquake damaged the water mains throughout the city leaving almost all of the fire hydrants dry. On the morning of April 19th the Fire was advancing into the Mission District. Luckily Engine Co. 7 found water at this gallant little hydrant. Joined by Engine Co.'s 19, 21 and 27, with Truck Co. 6 assisting, hose leads were made down 20th Street to Mission Street, a distance of 2200 feet. The SFFD extinguished the fire as they advanced and did not allow it to cross 20th. The hose was later extended to the east side of Mission Street to supply Engine Co.'s 10 and 25. The continuous two-day water supply from this hydrant made it possible to extinguish the conflagration by 10:00 a.m. on Friday, April 20th. This action stopped the fire from advancing further into the Mission District, thus saving it from total destruction. In 1969, Mission District Historian Lester "Doc" Bulloch asked Mayor Alioto to give his permission to honor the "Little Giant" and its extraordinary history by painting it gold. Granted. Since that date, citizens have gathered on the morning of April 18th to honor "The Little Giant" by retelling its story and painting it gold.

Mayor London Breed

Board of Supervisors, Resolution No. 291-19, 2019

Placed on this site April 18, 2020 by the Guardians of the City

(Proposed Plaque Text)

A SILVER TWIN HYDRANT
698 HAYES STREET

On the northeast corner of Hayes and Buchanan Streets

**THE GREAT EARTHQUAKE & FIRE
APRIL 18-20, 1906**

A SILVER TWIN FIRE HYDRANT

The 1906 Earthquake damaged the water mains throughout the city leaving almost all of the fire hydrants dry. On the morning of April 18th, after a long search, firemen found water at this gallant little hydrant. Engine Companies No. 14, 21, & 34 worked in relay along Hayes Street to Gough Street in order to stop this fire known as the "Ham & Egg" Fire that originated at 395 Hayes Street. The hose lead was extended to Franklin Street and then extended again to Octavia and Fell Streets, a total of 3200 feet. The SFFD worked in this area until 1:00 a.m. on April 19th. The continuous water supply from this hydrant, and the actions of the engine companies, stopped the advancing conflagration from moving any further west, thus saving the Western Addition and the western half of San Francisco from total destruction. In 2013 after discovering the role of the two Western Addition hydrants in the 1906 Fire, SFFD Historian Lt. Bill Koenig named them the "Silver Twins". This hydrant's "twin" is located on the northwest corner of Ellis Street and Van Ness Avenue.

**Mayor London Breed
Board of Supervisors, Resolution No. 291-19, 2019
Placed on this site April 17, 2020 by the Guardians of the City
and the Hayes Valley Neighborhood Association**

(Proposed Plaque Text)

A SILVER TWIN HYDRANT
900 ELLIS STREET

On the northwest corner of Ellis Street and Van Ness Ave.

**THE GREAT EARTHQUAKE & FIRE
April 18 - 20, 1906**

A SILVER TWIN FIRE HYDRANT

The 1906 Earthquake damaged the water mains throughout the city leaving almost all of the fire hydrants dry. On April 19th it was discovered that this gallant little hydrant had an extraordinary water supply. When the fire jumped Van Ness Avenue and moved to the east side of Franklin Street, Assistant Chief Shaughnessy ordered Engine Co. No. 34 to connect to this hydrant. Working primarily with Engine Companies No. 2 and 23, a hose lead was made up Franklin Street to Sutter, extended to Bush, and later extended to California Street, a total distance of 3300 feet. The two-day water supply from this hydrant and the actions of the courageous engine companies extinguished the advancing conflagration saving the Western Addition and the western half of San Francisco from total destruction. In 2013 after discovering the role of the two Western Addition hydrants in the 1906 Fire, SFFD Historian Lt. Bill Koenig named them the "Silver Twins". This hydrant's "twin" is located on the northeast corner of Hayes and Buchanan.

**Mayor London Breed
Board of Supervisors, Resolution No. 291-19, 2019
Placed on this site April 17, 2020, by the Guardians of the City
and the Hayes Valley Neighborhood Association**

PLAQUE DESIGN, DIMENSIONS AND MATERIALS OF EACH

The three plaques will be made from bronze and will measure 13" x 22" x 1/2 inch thick. The lettering is Rockwell Bold, with a full box border that will be raised and burnished with a tasteful golden tone (color shown in the photo below). All plaques will be manufactured by American Western Awards who has produced hundreds of plaques for entities around the country. The plaques will comply with all DPW safety requirements.



Plaque colors will look like this.

ADDENDUM

San Francisco's three most famous fire hydrants are not just static displays. They are active in-service hydrants that assist in defending life and property of San Francisco. Each year they are the locations of civic events where people of all ages participate in the repainting of each hydrant and learn the history of the actions taken during the 1906 Fire. The plaques would be a great addition to the preserving of San Francisco's fire history.

RECENT PAST CIVIC EVENTS

Since 1969, it has been a San Francisco tradition to paint the Gold Hydrant immediately following the 5:00 am celebration at Lotta's Fountain. The photos below were taken at the ceremony in 2013.





The annual painting of the Silver Twins is held on April 17th at 10:00 am beginning with the twin at Hayes and Buchanan Streets. The party then moves on to paint the other twin at Ellis and Van Ness Avenues.



In this photo taken in 2014, London Breed a Supervisor at the time, and the Fire and Police command staffs are about to give this Silver Twin hydrant its first coat of silver paint. The members of the Guardians of the City who have been working on this plaque project have become friends with the owner of the Hayes Valley Deli. He likes having the Silver Twin hydrant outside his front door as it has increased his business at 698 Hayes Street.

Shown here: Larry Cronander,
Past President of the Hayes Valley Neighborhood Association
painting the hydrant. (We continue to work closely with other
members of the Association).



Retired Chief Joanne Hayes-White and members of her staff celebrate the painting of the 2015 painting of the twin located at Ellis and Van Ness.

